



**DIGITAL LOG** (785) 625-3858

**Microresistivity Log**

15-101-22,340-00-00

API No.

Company **Larson Engineering, Inc.**  
 Well **Joyce Ann Unit No.1-13**  
 Field **Wildcat**  
 County **Lane** State **Kansas**

Location **95' FNL & 1050' FEL**  
 Sec: **13** Twp: **19S** Rge: **29W**

Permanent Datum **Ground Level** Elevation **2792**  
 Log Measured From **Kelly Bushing** **7** Ft. Above Perm. Datum  
 Drilling Measured From **Kelly Bushing**

Other Services  
 CNL/CDL  
 DIL

Elevation  
 K.B. 2799  
 D.F. 2792  
 G.L. 2792

Date	2/11/2012
Run Number	Two
Depth Driller	4690
Depth Logger	4692
Bottom Logged Interval	4691
Top Log Interval	3600
Casing Driller	8.625 @ 262
Casing Logger	263
Bit Size	7.875
Type Fluid in Hole	Chemical
Salinity,ppm CL	3.400
Density / Viscosity	9.3 54
pH / Fluid Loss	10.0 7.6
Source of Sample	Flowline
Rm @ Meas. Temp	.95 @ 46
Rmf @ Meas. Temp	.71 @ 46
Rmc @ Meas. Temp	1.28 @ 46
Source of Rmf / Rmc	Charts
Rm @ BHT	.36 @ 123
Operating Rig Time	4 Hours
Max Rec. Temp. F	123
Equipment Number	17
Location	Hays
Recorded By	C. Desaiie
Witnessed By	Vern Schrag

<<< Fold Here >>>

All interpretations are opinions based on inferences from electrical or other measurements and we cannot and do not guarantee the accuracy or correctness of any interpretation, and we shall not, except in the case of gross or willful negligence on our part, be liable or responsible for any loss, costs, damages, or expenses incurred or sustained by anyone resulting from any interpretation made by any of our officers, agents or employees. These interpretations are also subject to our general terms and conditions set out in our current Price Schedule.

**Comments**

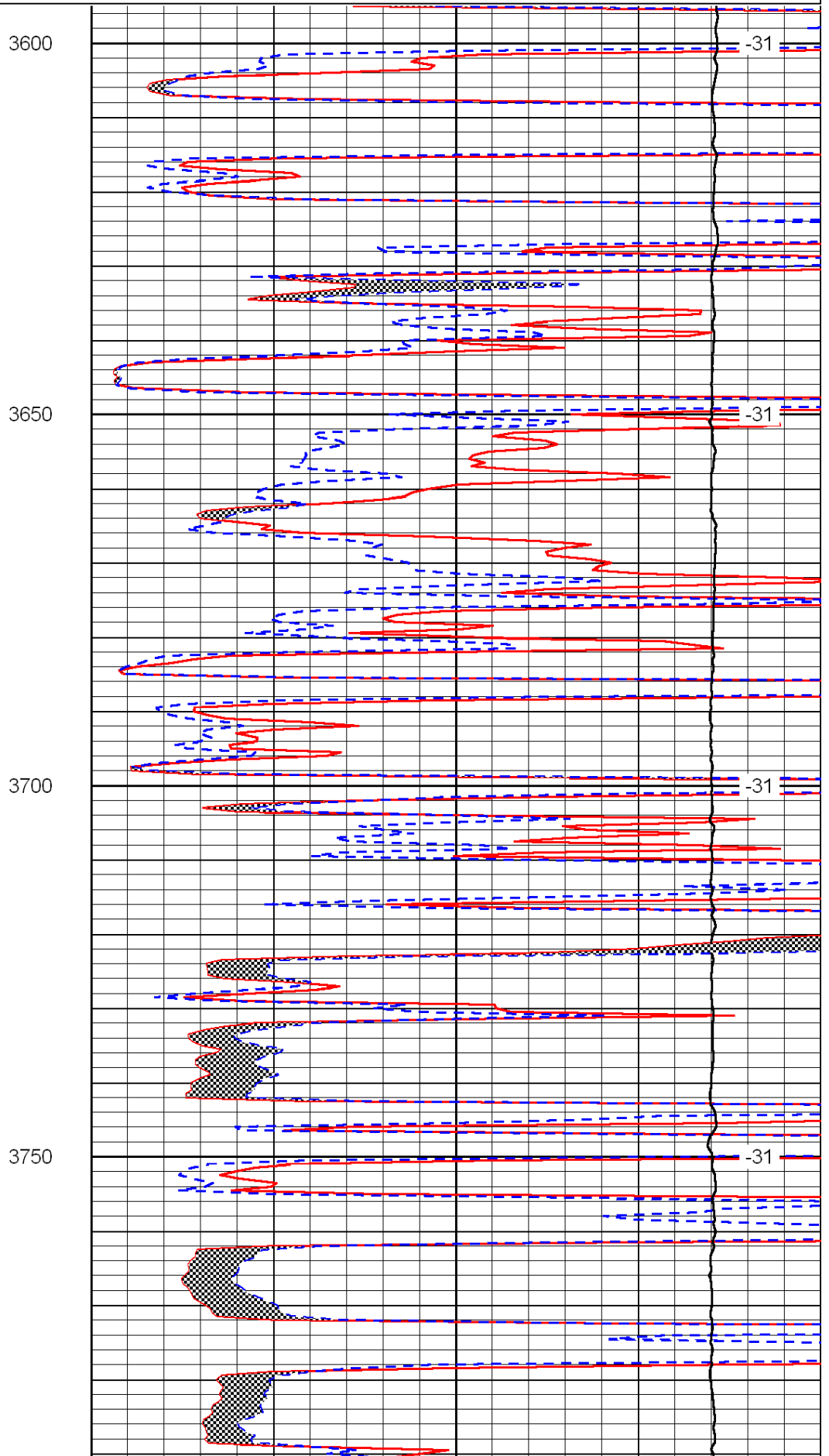
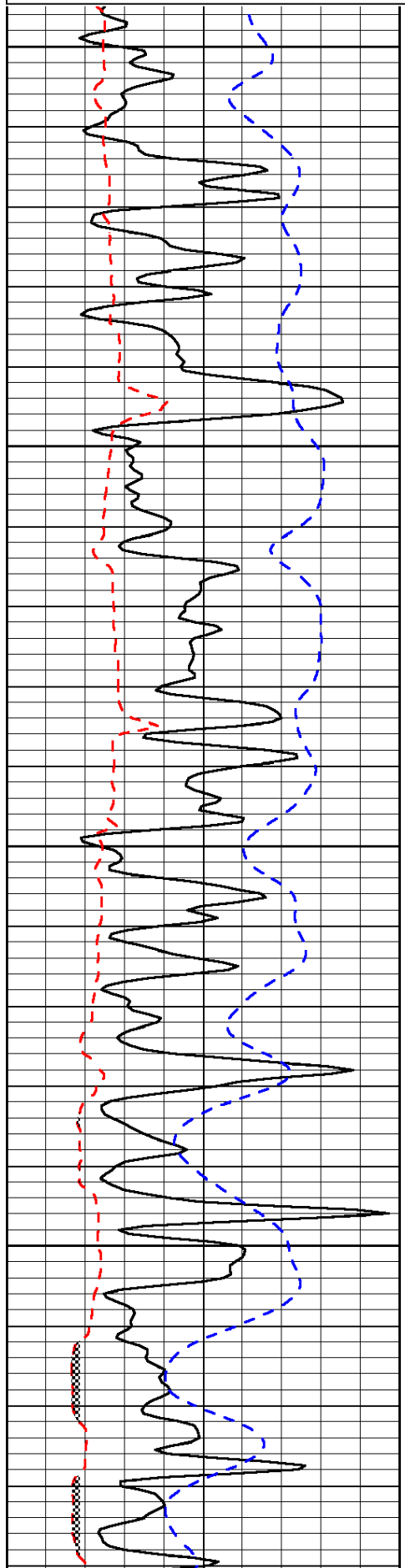
Thank you for using Log-Tech, Inc.  
 (785) 625-3858  
 Dighton KS,  
 5 1/4 S, W Into

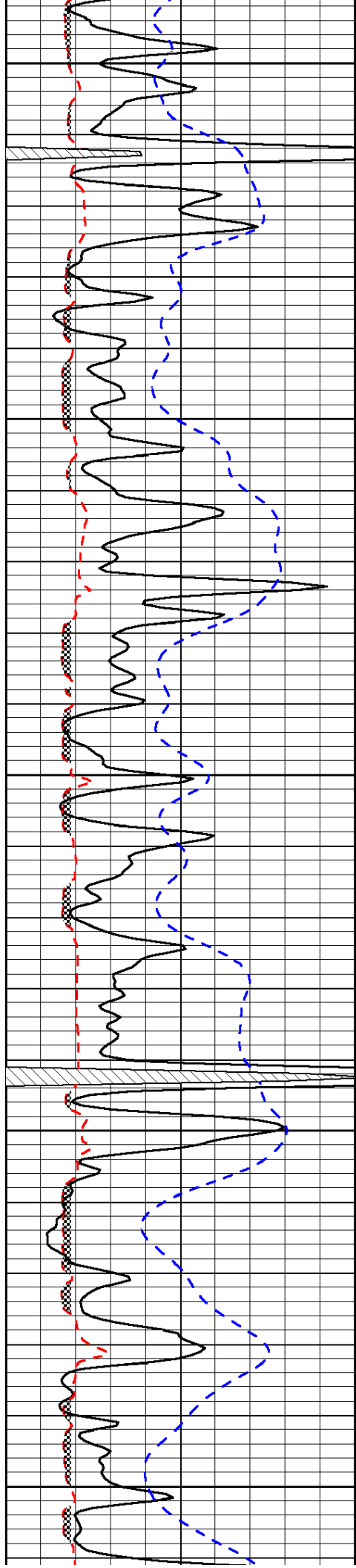
Database File: c:\warrior\data\larson\_joyce ann unit no.1-13\larsonhd.db  
 Dataset Pathname: dil\larstk  
 Presentation Format: micro  
 Dataset Creation: Sat Feb 11 03:34:39 2012  
 Charted by: Depth in Feet scaled 1:240

0	Gamma Ray	150
6	Micro Log Caliper (GAPI)	16
-200	SP (mV)	0

0	Micro Inverse 1 X 1	40
0	Micro Normal 2"	40
15000	Line Weight	0

LSPD





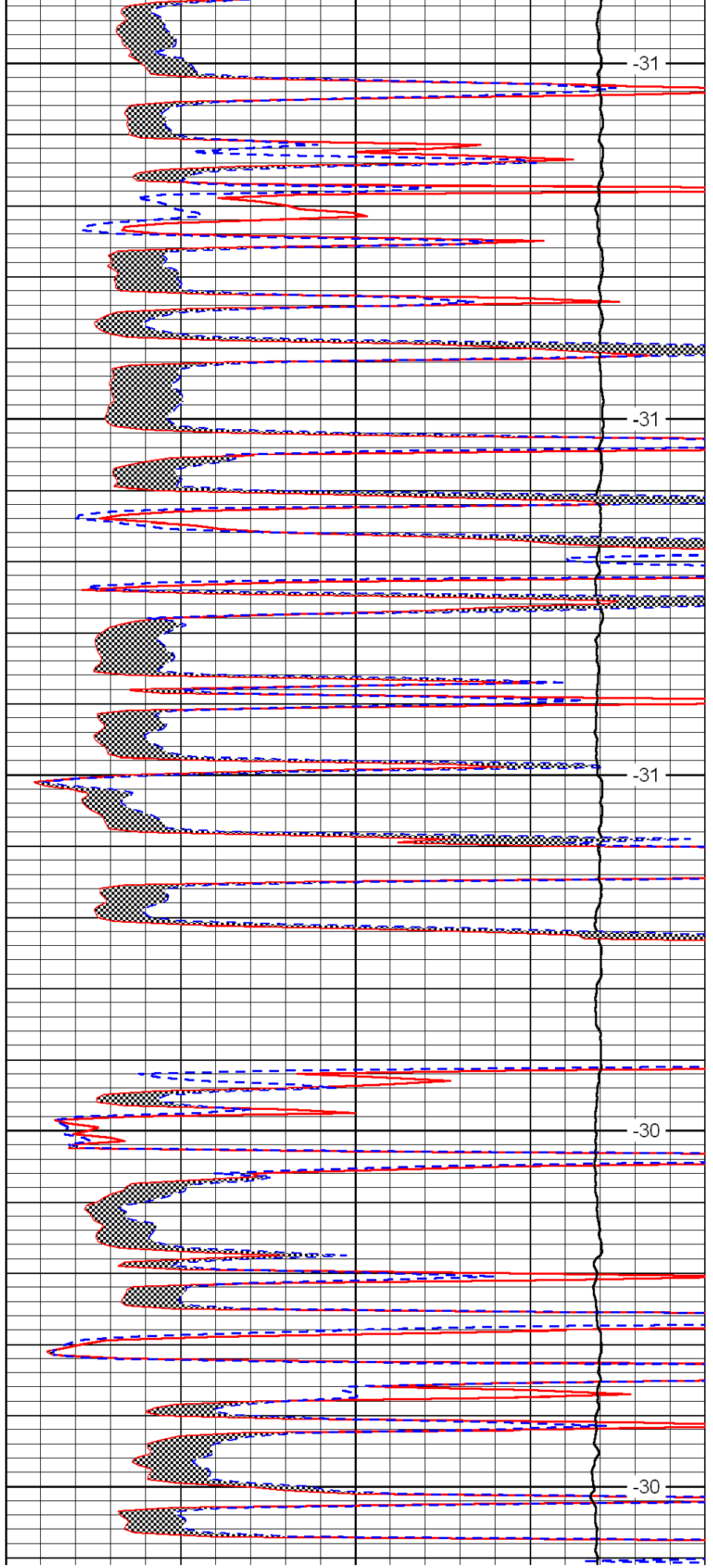
3800

3850

3900

3950

4000



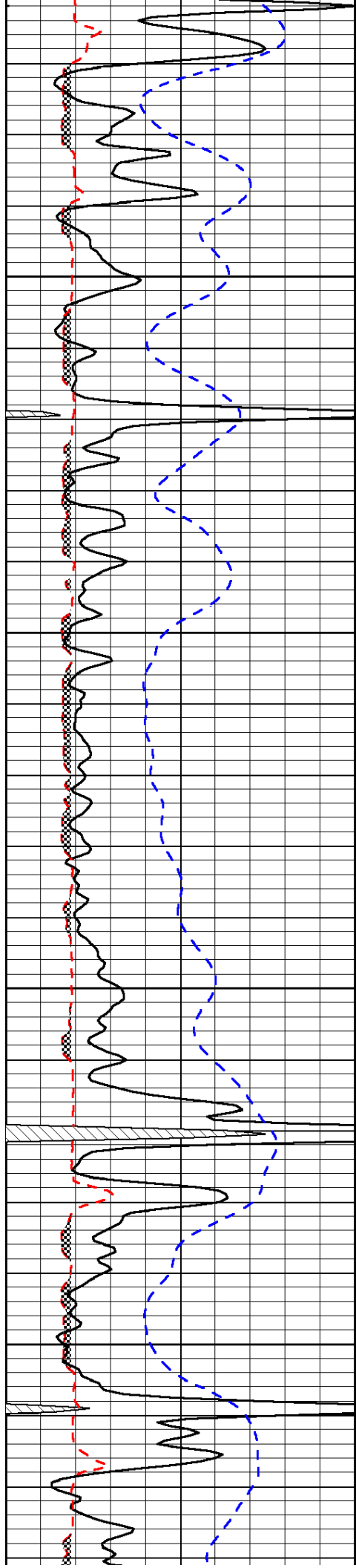
-31

-31

-31

-30

-30

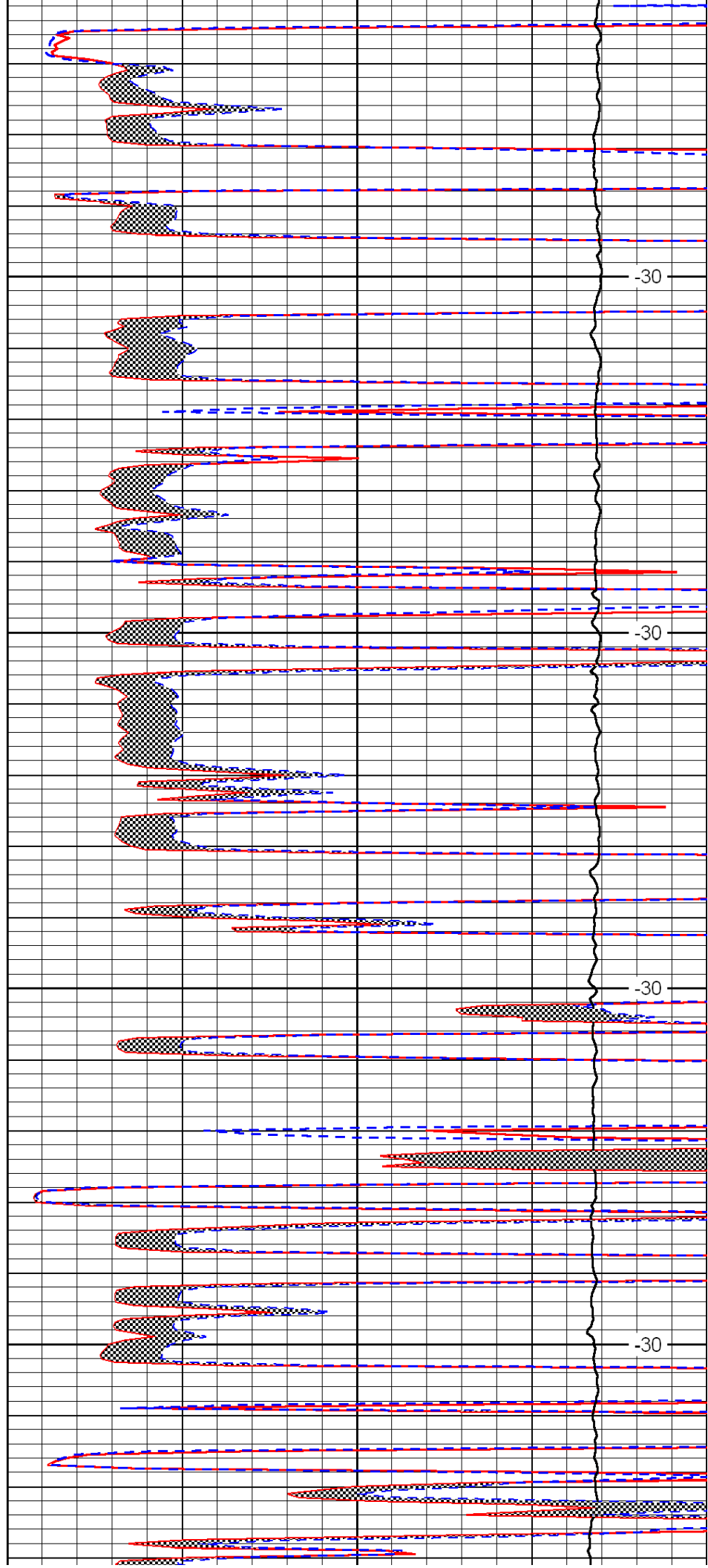


4050

4100

4150

4200

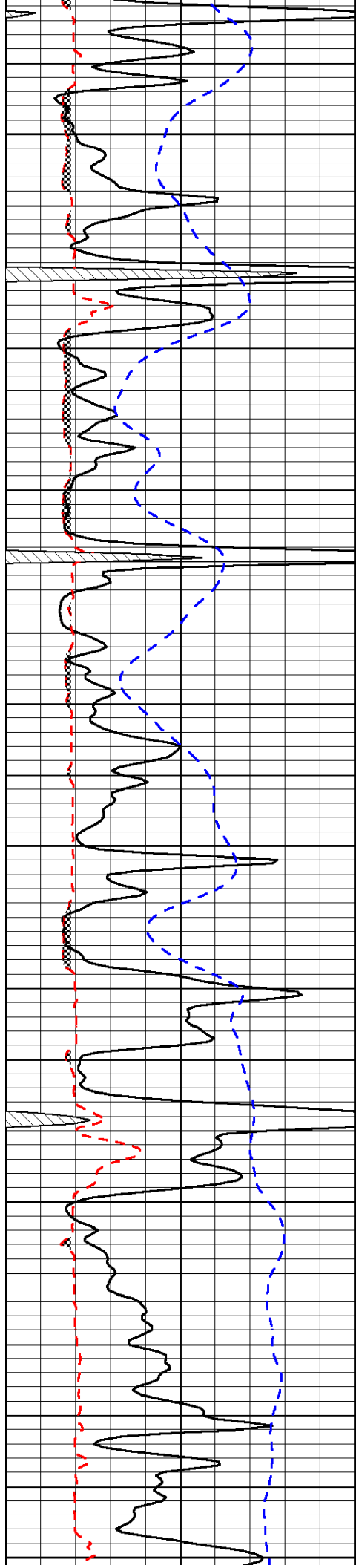


-30

-30

-30

-30



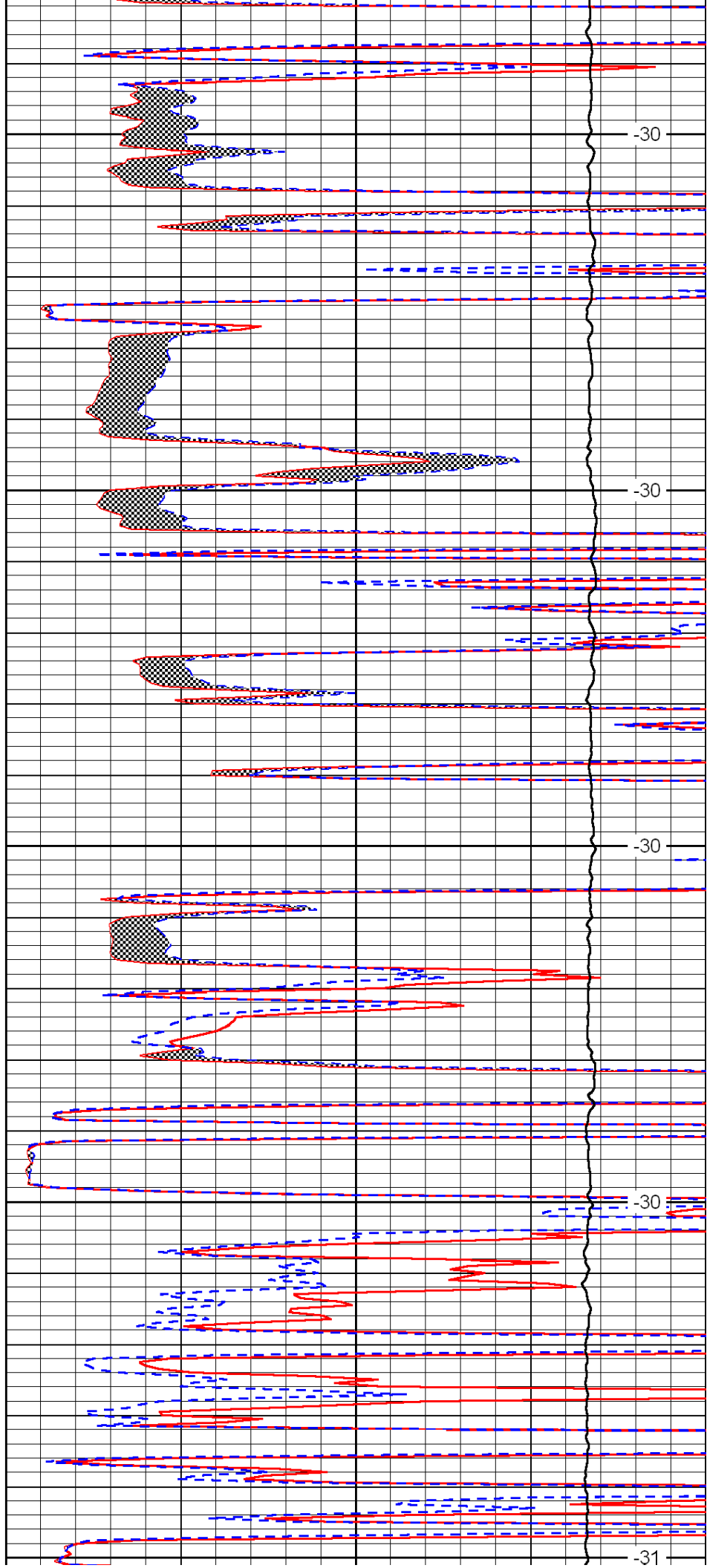
4250

4300

4350

4400

4450



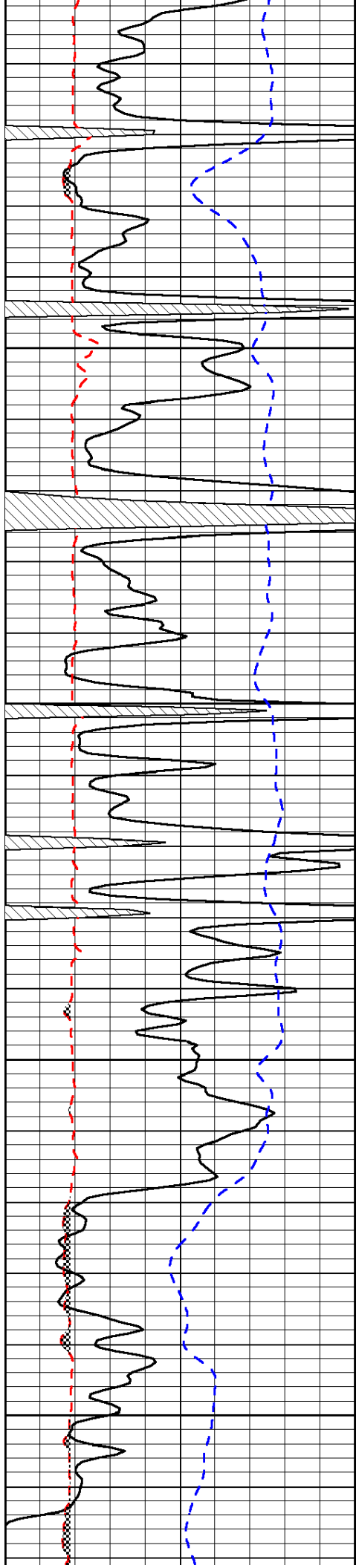
-30

-30

-30

-30

-31

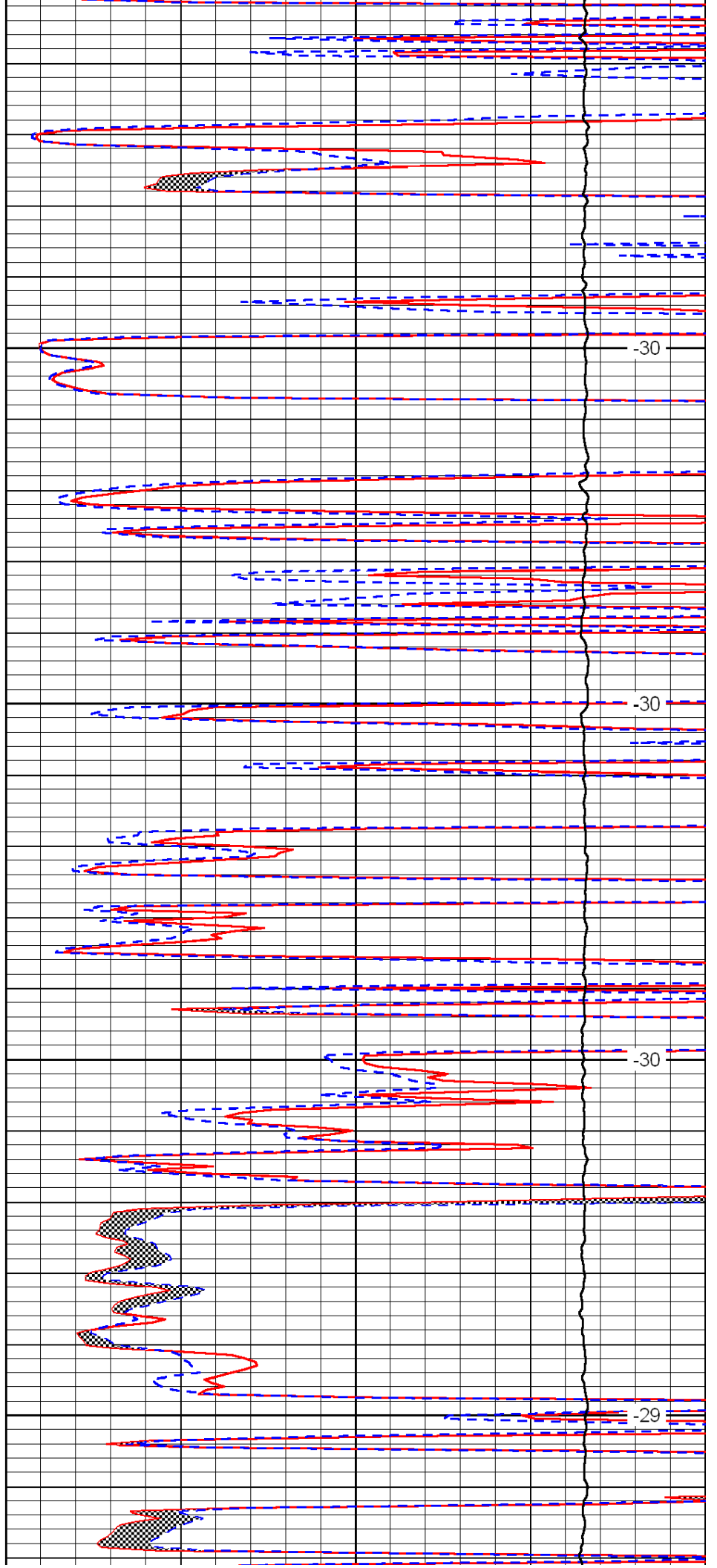


4500

4550

4600

4650

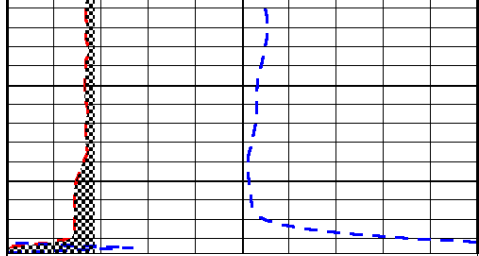


-30

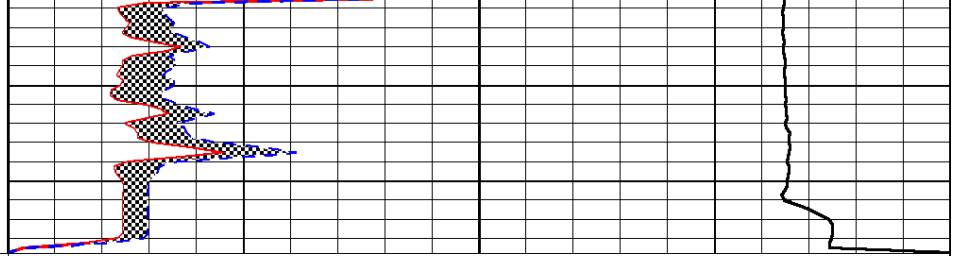
-30

-30

-29



0	Gamma Ray	150
6	Micro Log Caliper (GAPI)	16
-200	SP (mV)	0



0	Micro Inverse 1 X 1	40
0	Micro Normal 2''	40
15000	Line Weight	0

LSPD