



Dual Induction Log

DIGITAL LOG (785) 625-3858

15-101-22,340-00-00

API No.

Company Larson Engineering, Inc.
 Well Joyce Ann Unit No.1-13
 Field Wildcat
 County Lane State Kansas

Location 95' FNL & 1050' FEL
 Sec: 13 Twp: 19S Rge: 29W
 Permanent Datum Ground Level Elevation 2792
 Log Measured From Kelly Bushing 7 Ft. Above Perm. Datum
 Drilling Measured From Kelly Bushing

Other Services
 CNL/CDL
 MEL

Elevation
 K.B. 2799
 D.F. 2792
 G.L. 2792

Date	2/11/2012	
Run Number	One	
Depth Driller	4690	
Depth Logger	4692	
Bottom Logged Interval	4691	
Top Log Interval	250	
Casing Driller	8.625 @ 262	
Casing Logger	263	
Bit Size	7.875	
Type Fluid in Hole	Chemical	
Salinity,ppm CL	3.400	
Density / Viscosity	9.3 54	
pH / Fluid Loss	10.0 7.6	
Source of Sample	Flowline	
Rm @ Meas. Temp	.95 @ 46	
Rmf @ Meas. Temp	.71 @ 46	
Rmc @ Meas. Temp	1.28 @ 46	
Source of Rmf / Rmc	Charts	
Rm @ BHT	.36 @ 123	
Operating Rig Time	4 Hours	
Max Rec. Temp. F	123	
Equipment Number	17	
Location	Hays	
Recorded By	C. Desai	
Witnessed By	Vern Schrag	

<<< Fold Here >>>

All interpretations are opinions based on inferences from electrical or other measurements and we cannot and do not guarantee the accuracy or correctness of any interpretation, and we shall not, except in the case of gross or willful negligence on our part, be liable or responsible for any loss, costs, damages, or expenses incurred or sustained by anyone resulting from any interpretation made by any of our officers, agents or employees. These interpretations are also subject to our general terms and conditions set out in our current Price Schedule.

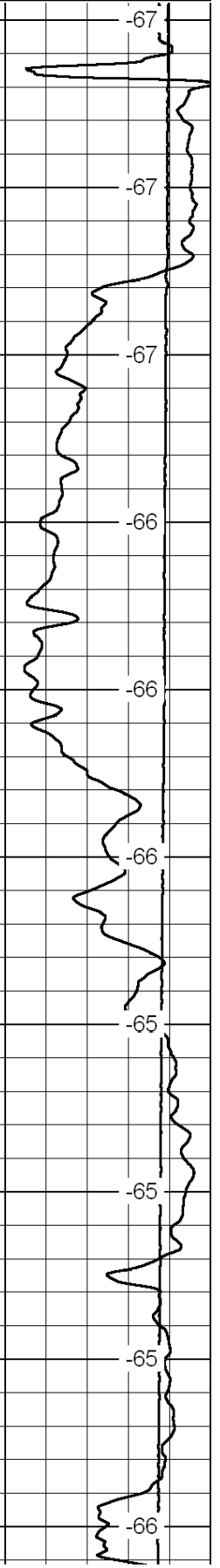
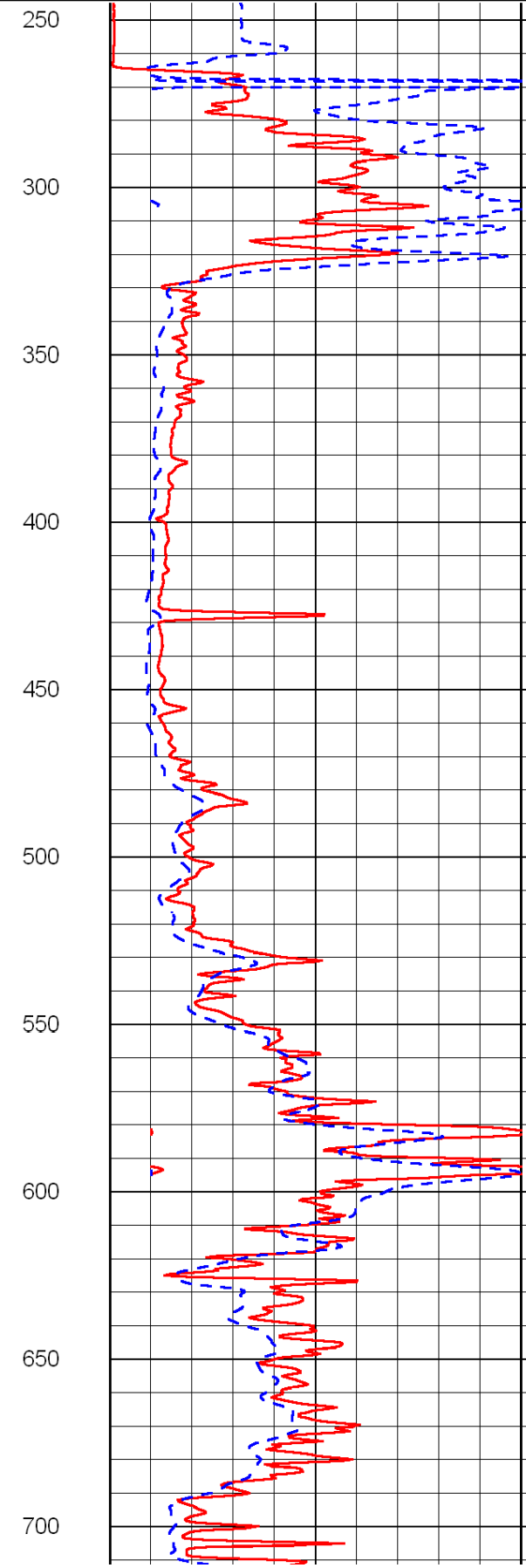
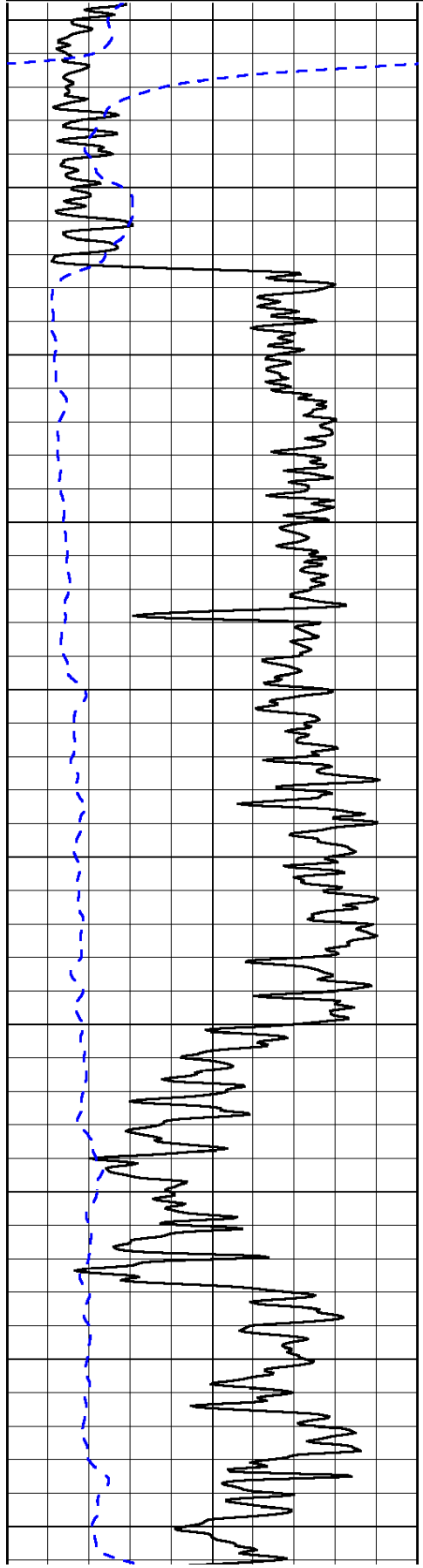
Comments

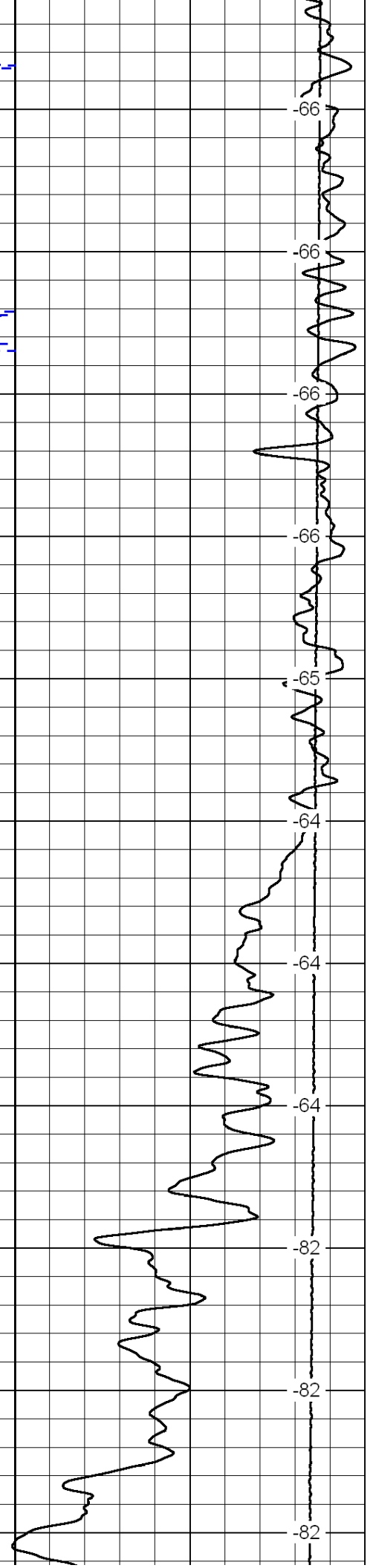
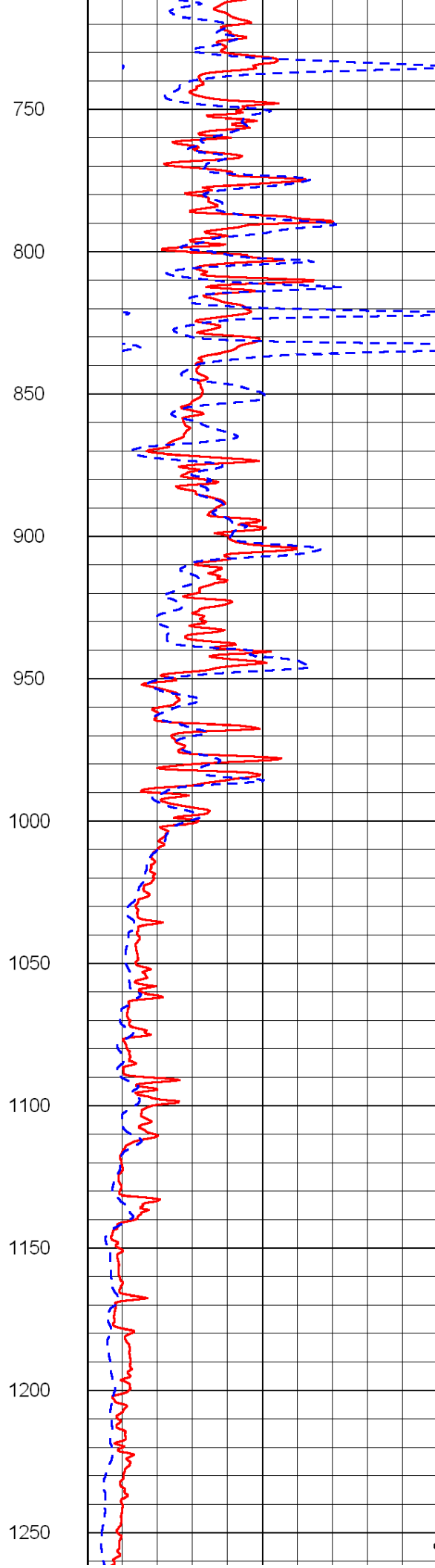
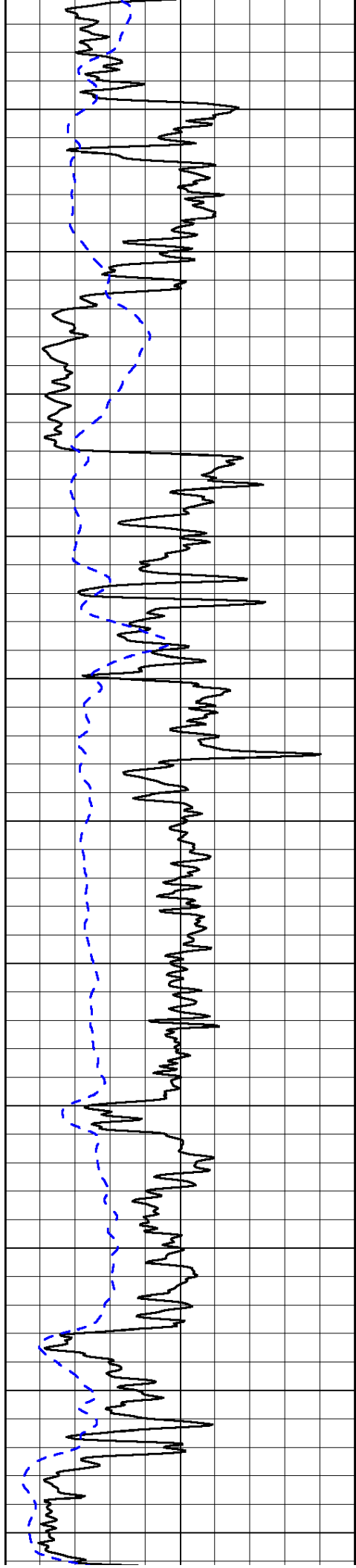
Thank you for using Log-Tech, Inc.
 (785) 625-3858
 Dighton KS,
 5 1/4 S, W Into

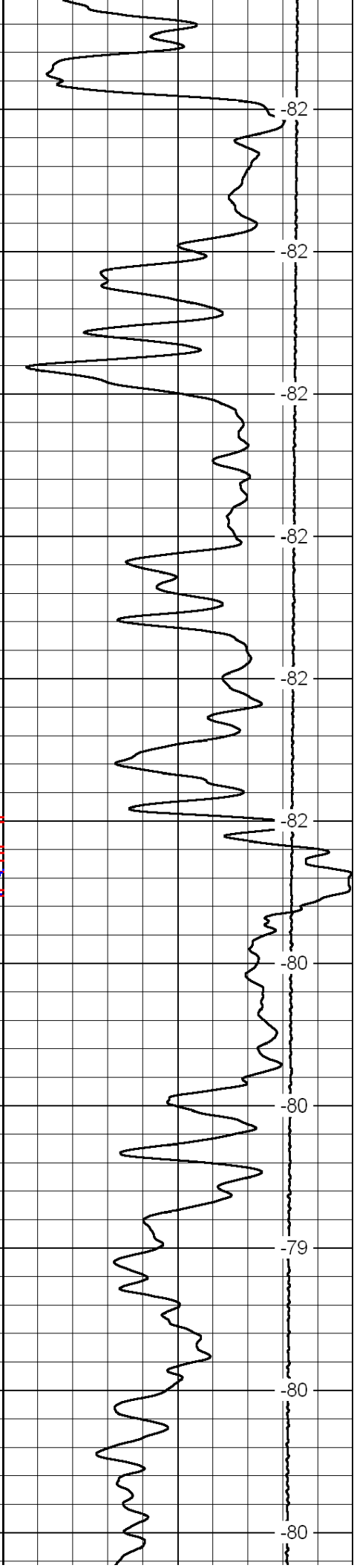
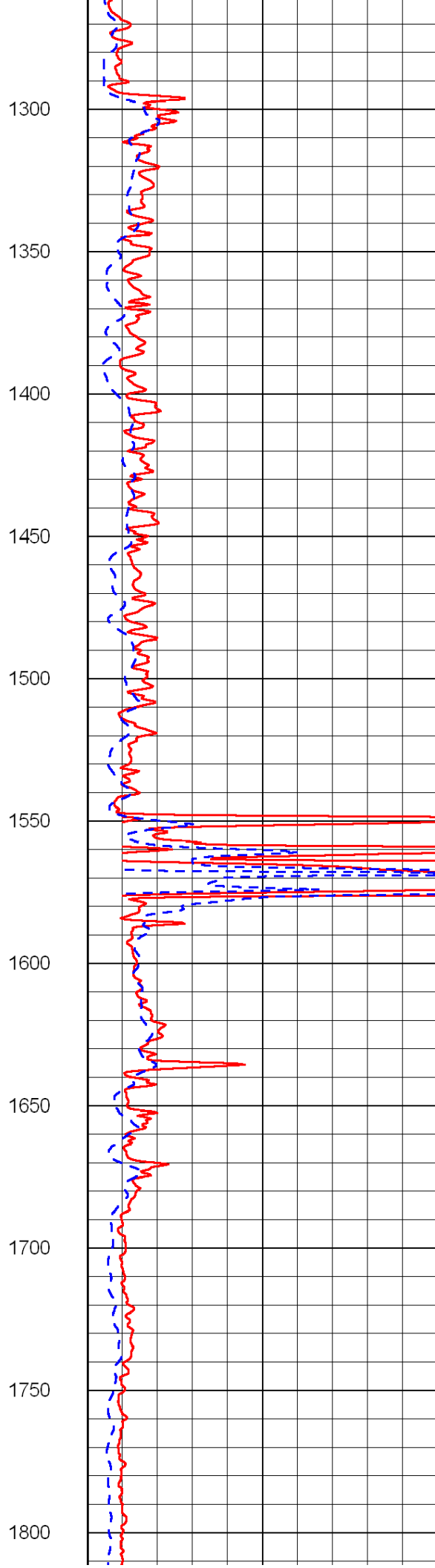
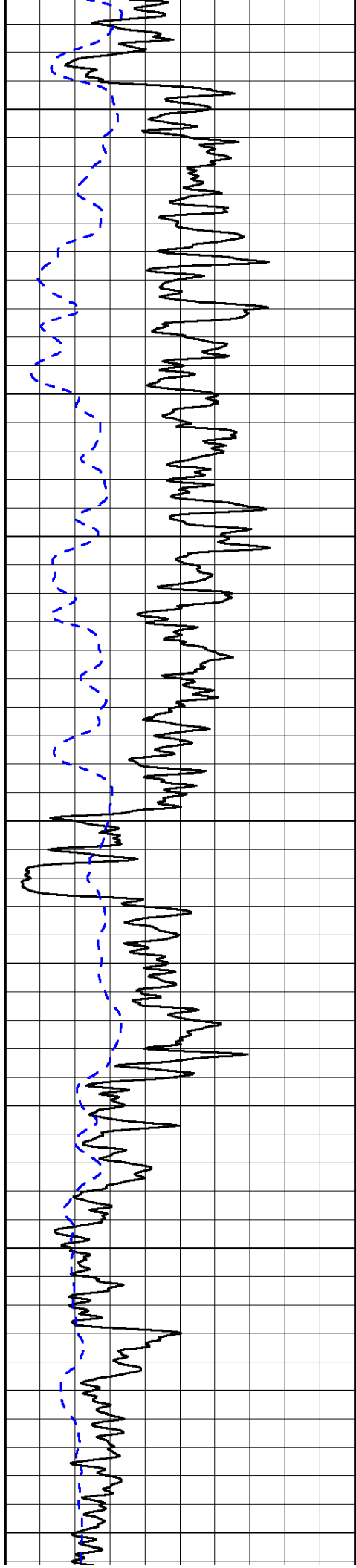
0	Gamma Ray	150
-200	SP (mV)	0

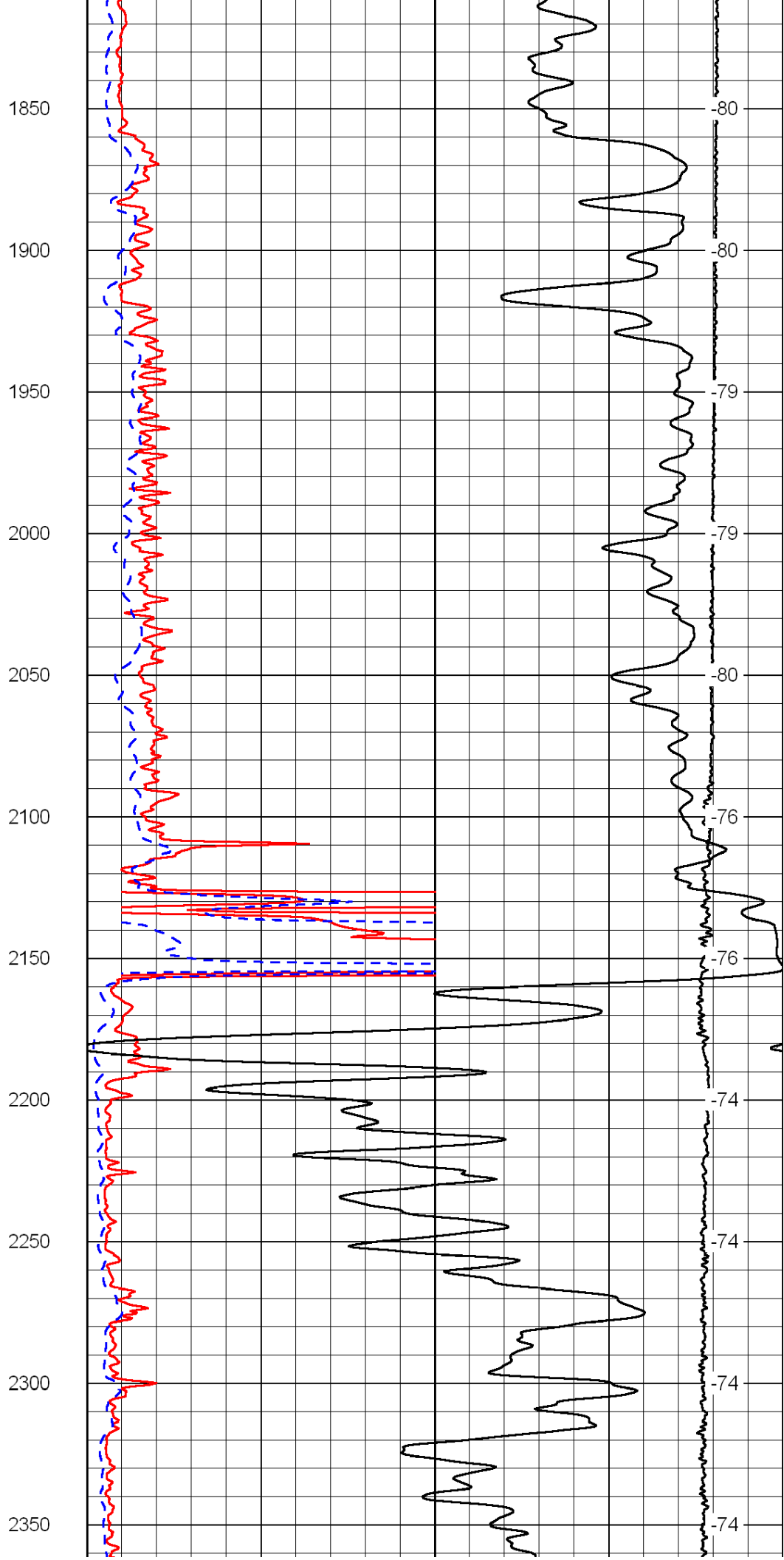
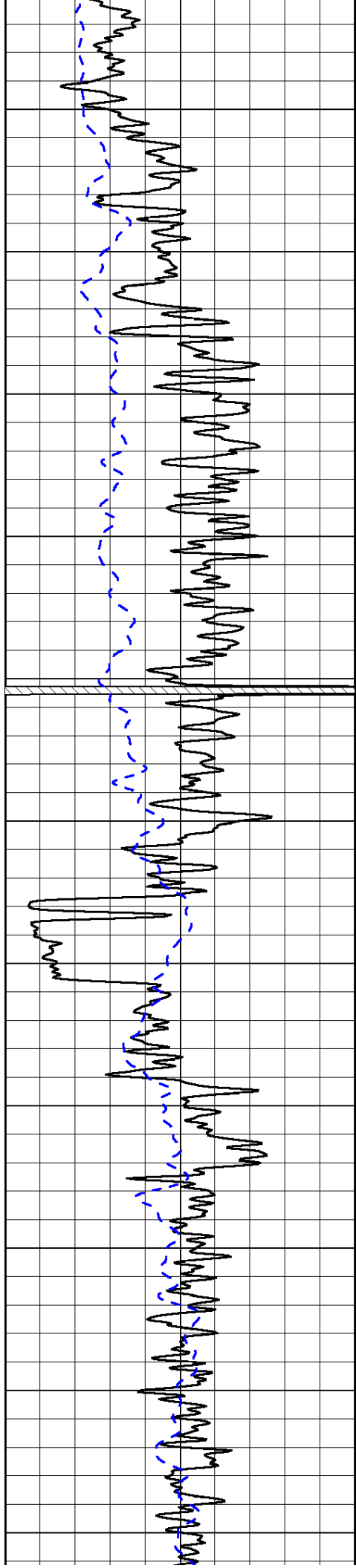
0	Shallow Resistivity	50
0	Deep Resistivity	50
1000	Conductivity	0
15000	Line Tension	0
50	Shallow Resistivity	500
50	Deep Resistivity	500

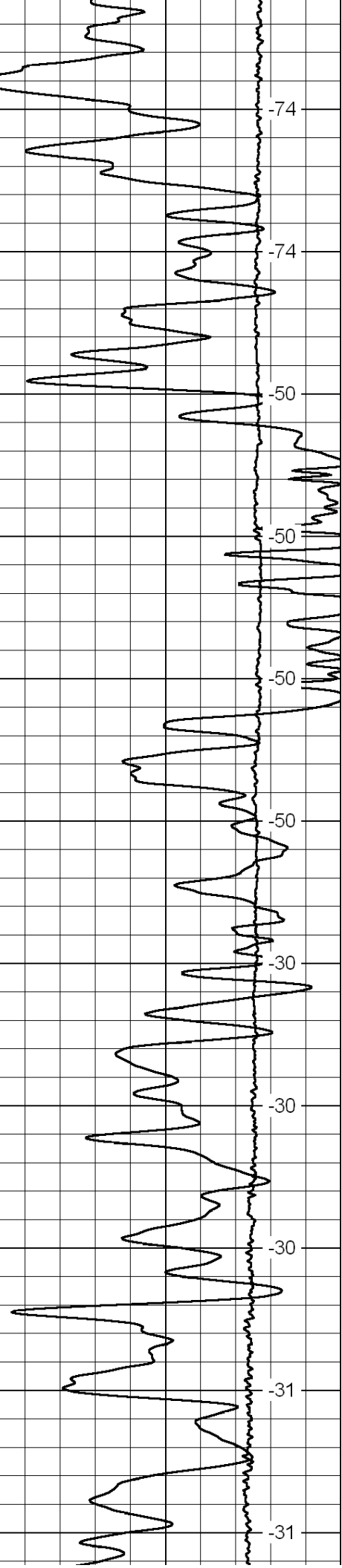
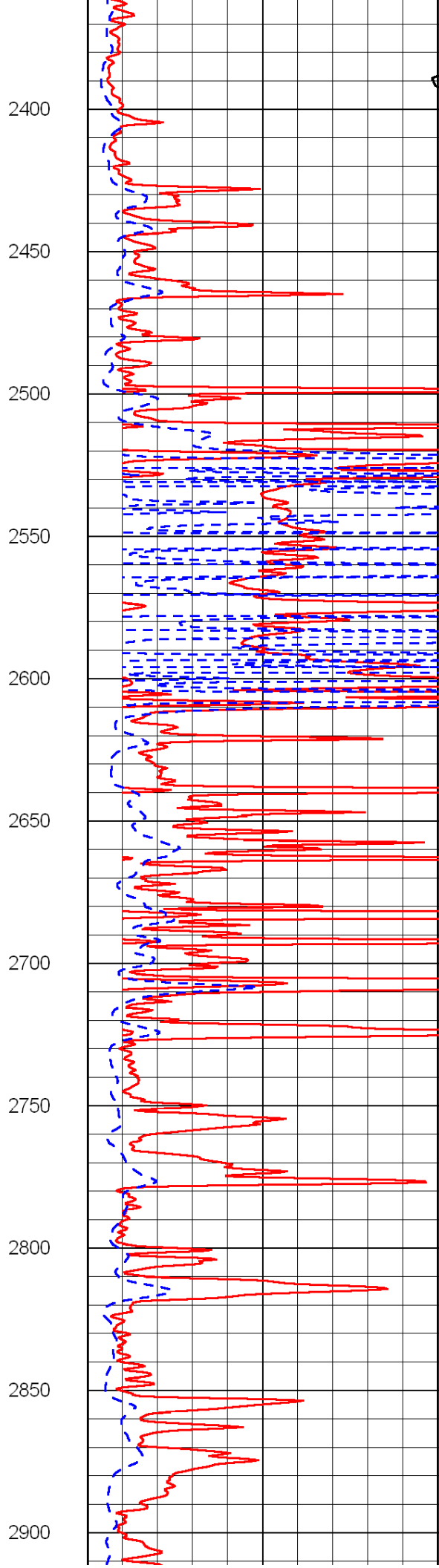
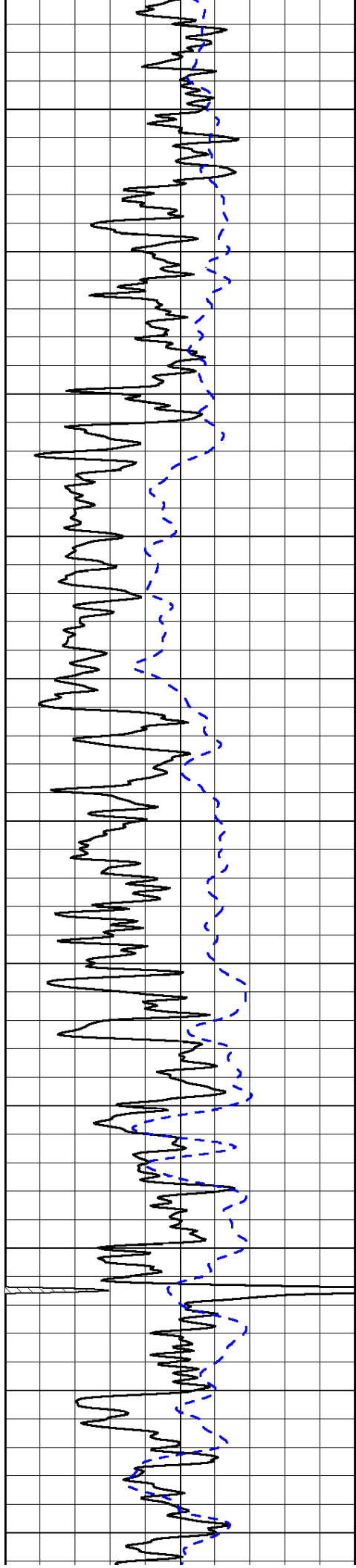
LSPD

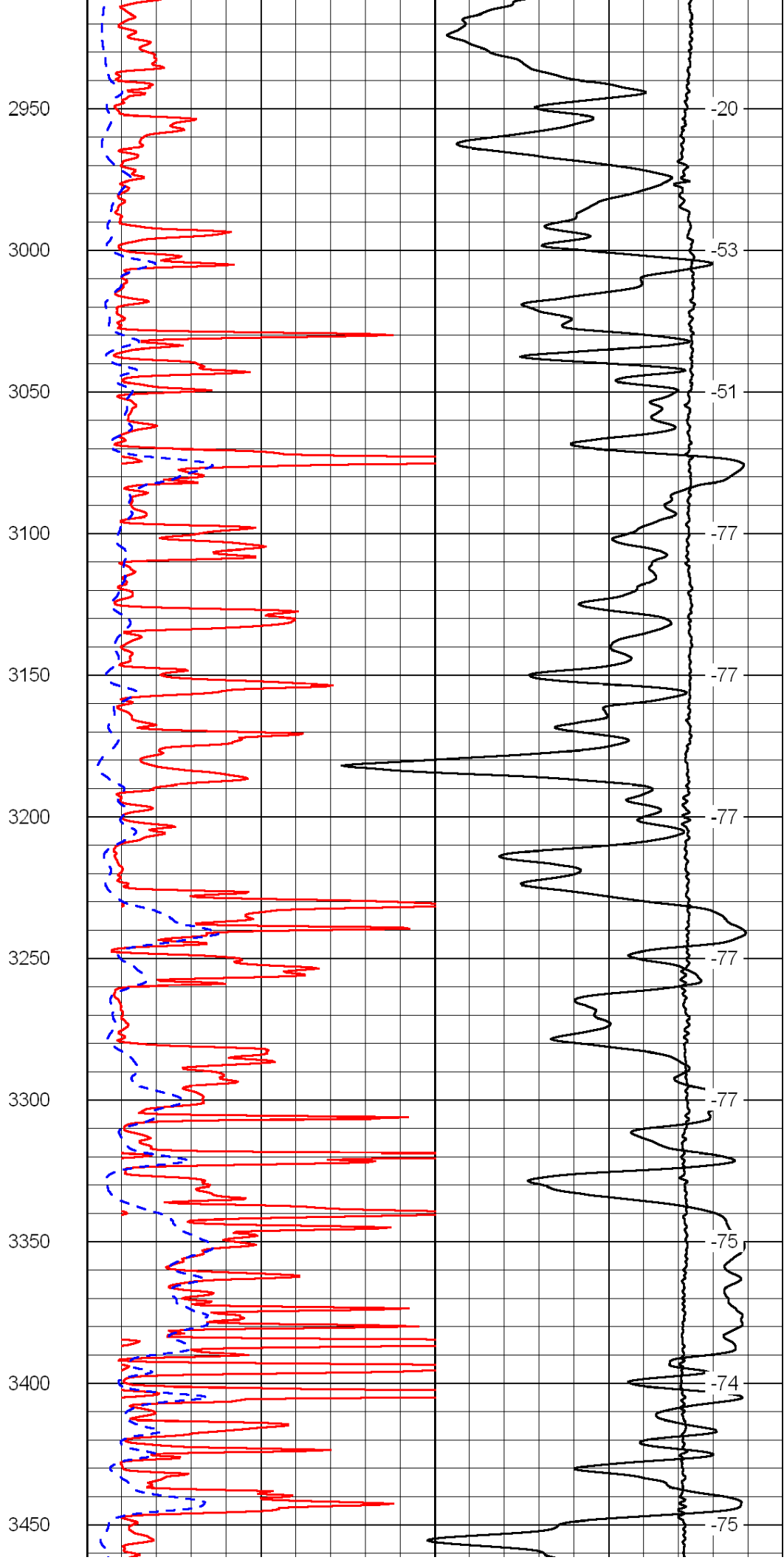
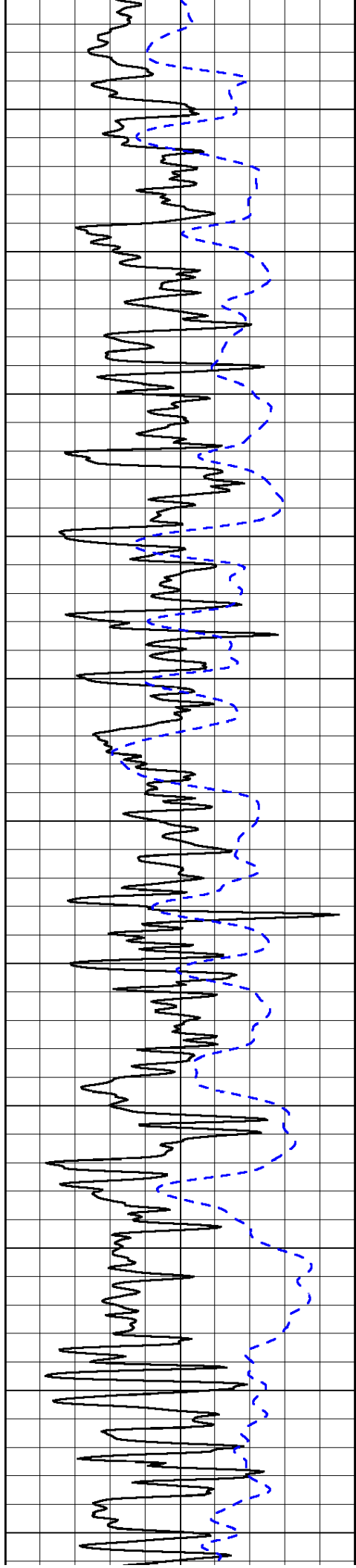


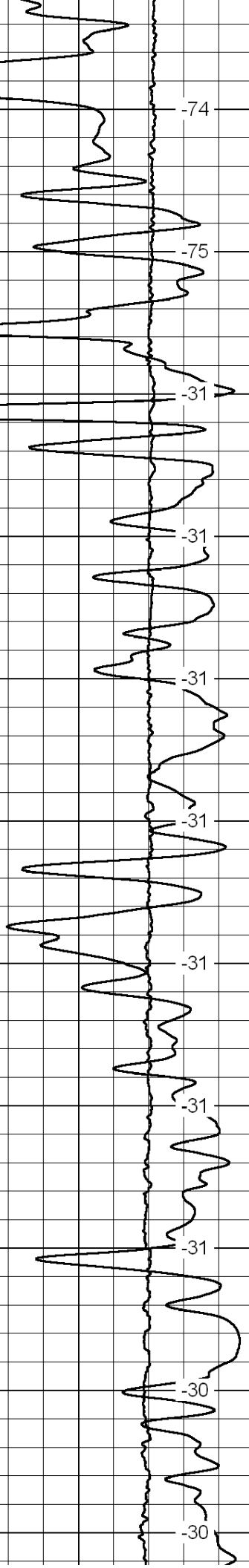
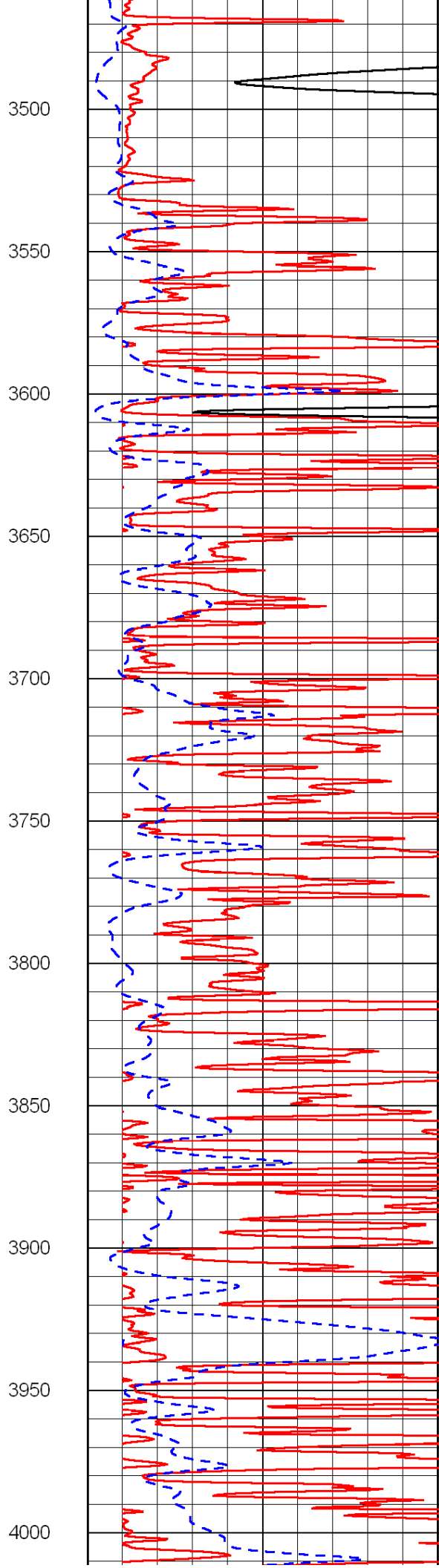
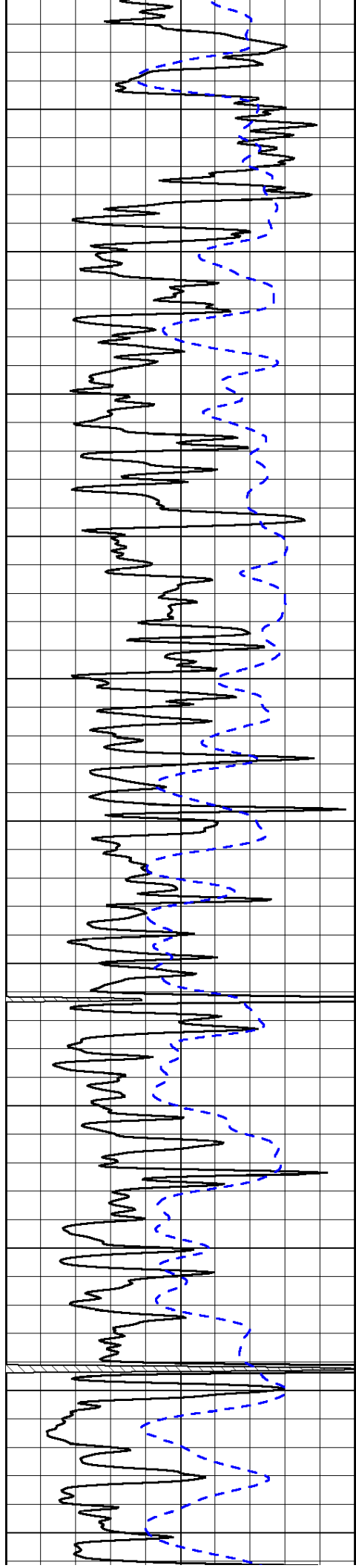


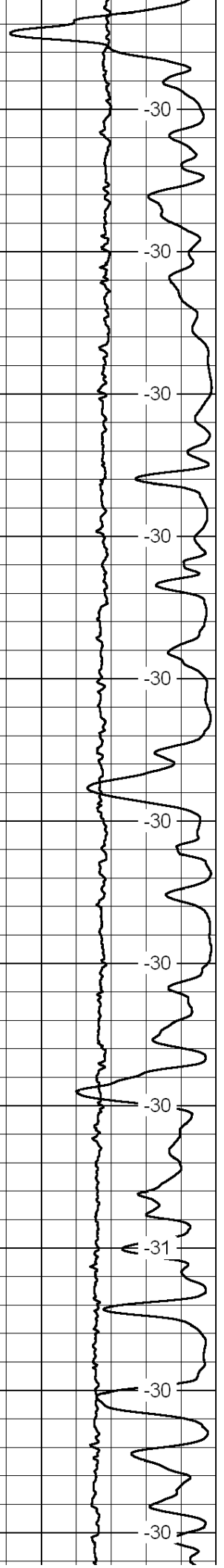
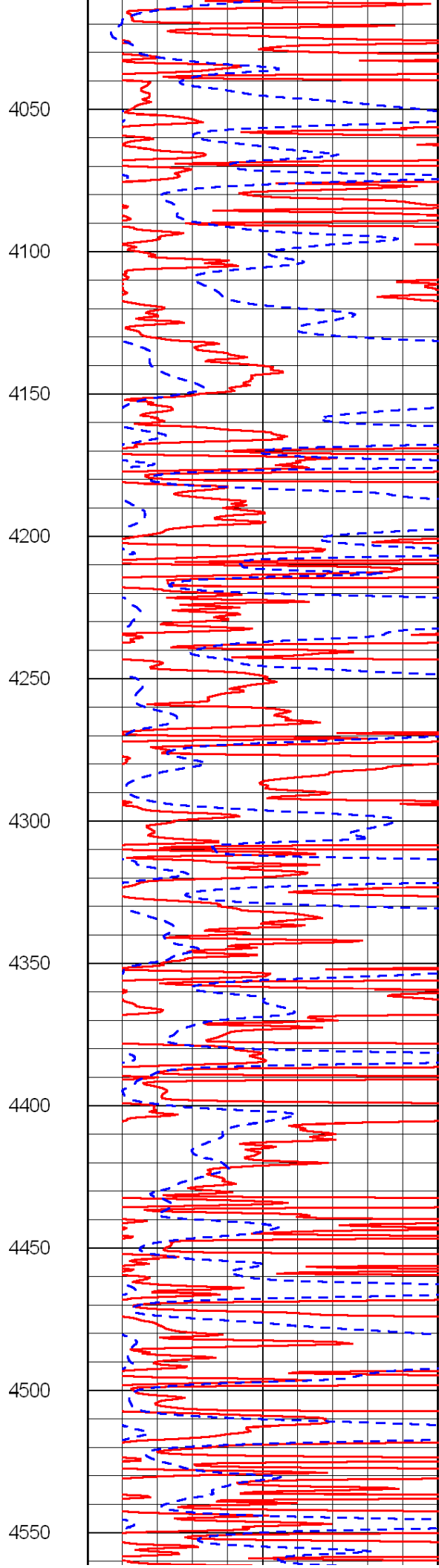
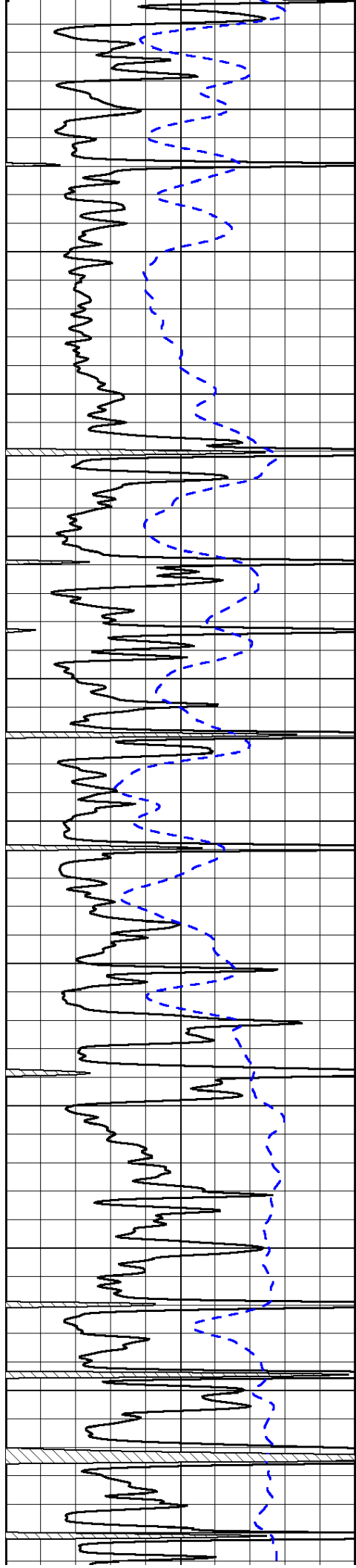


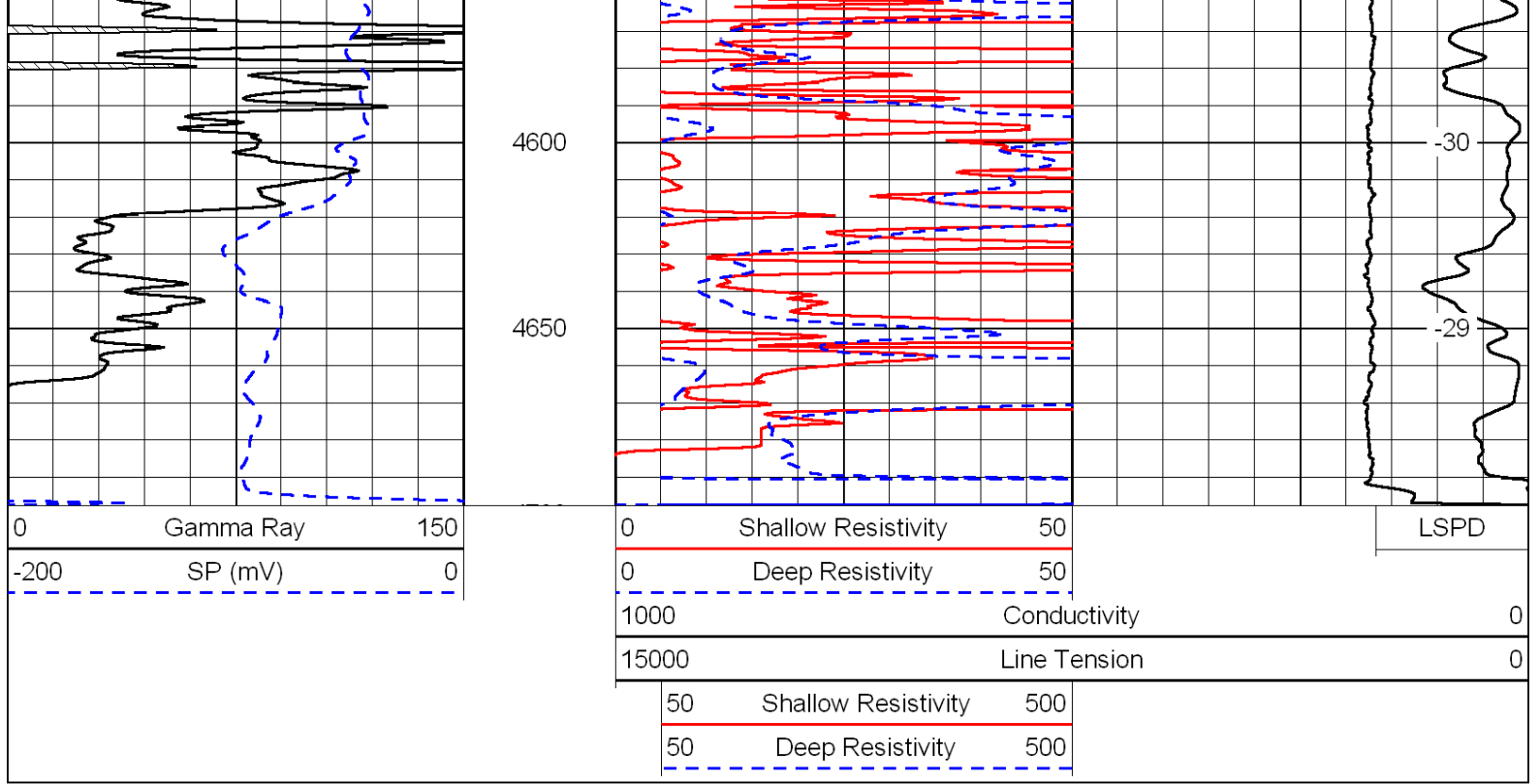




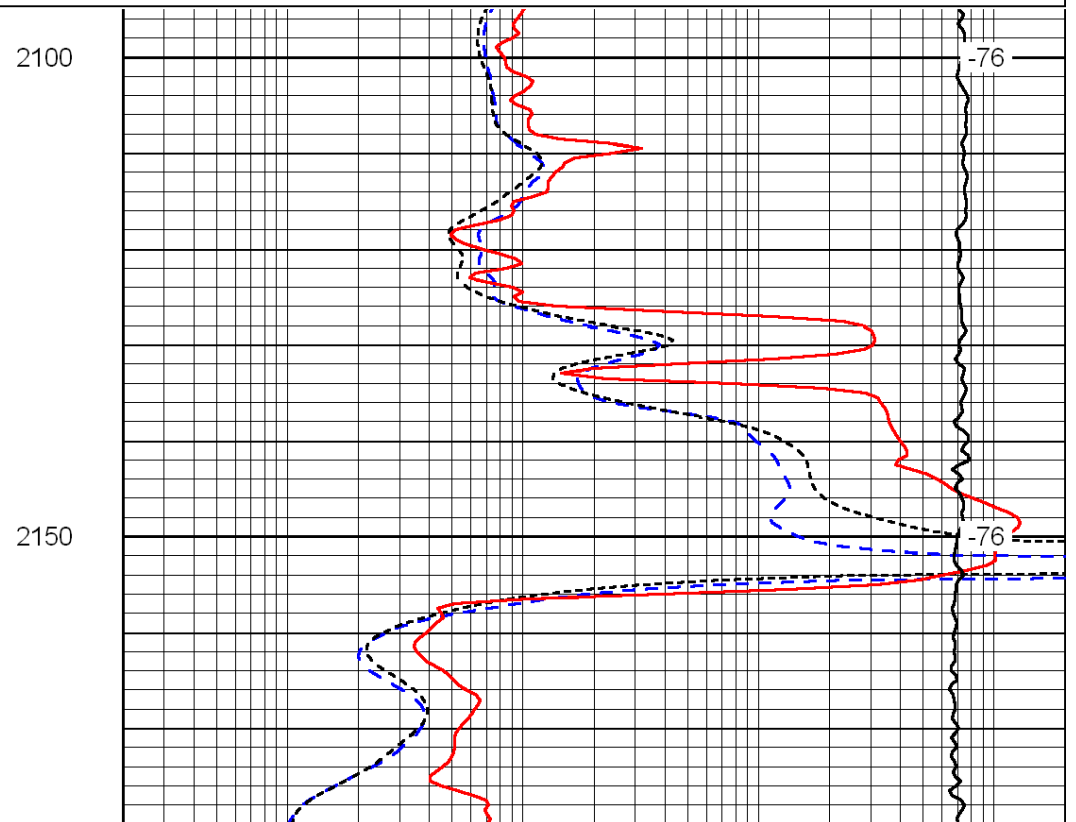
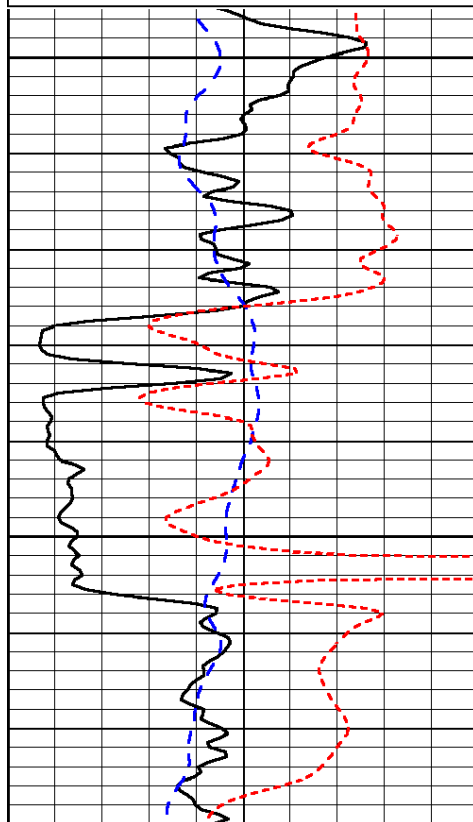
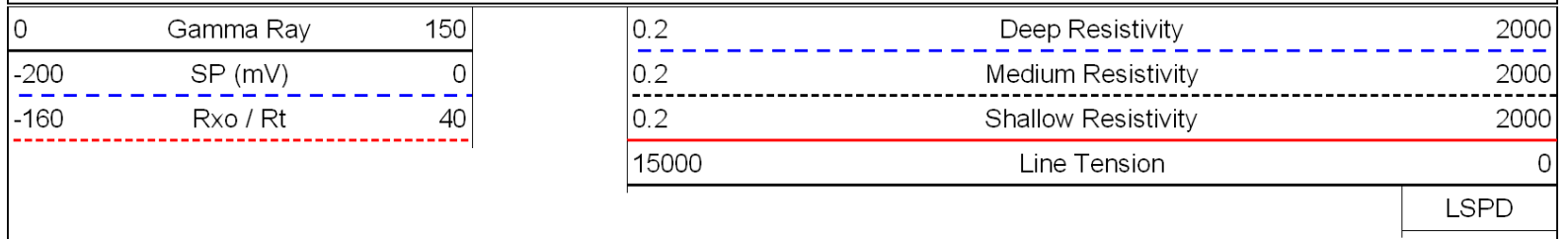


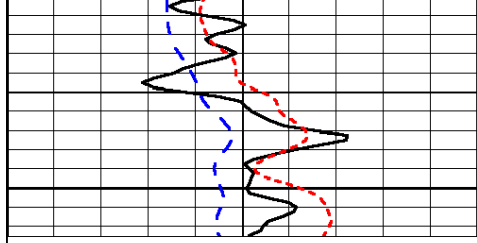






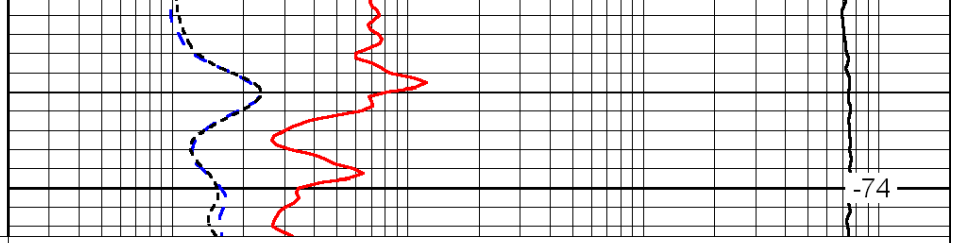
Database File: c:\warrior\data\larson_joyce ann unit no.1-13\larsonhd.db
 Dataset Pathname: dil\larstk
 Presentation Format: dil
 Dataset Creation: Sat Feb 11 03:34:39 2012
 Charted by: Depth in Feet scaled 1:240





0	Gamma Ray	150
-200	SP (mV)	0
-160	Rxo / Rt	40

2200



0.2	Deep Resistivity	2000
0.2	Medium Resistivity	2000
0.2	Shallow Resistivity	2000
15000	Line Tension	0

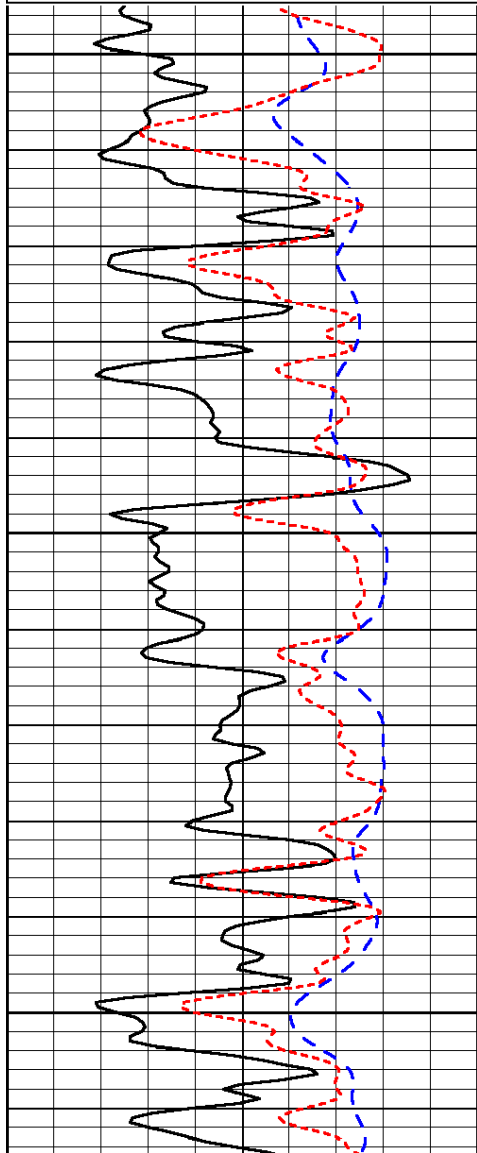
LSPD

Database File: c:\warrior\data\larson_joyce ann unit no.1-13\larsonhd.db
 Dataset Pathname: dil\larstk
 Presentation Format: dil
 Dataset Creation: Sat Feb 11 03:34:39 2012
 Charted by: Depth in Feet scaled 1:240

0	Gamma Ray	150
-200	SP (mV)	0
-160	Rxo / Rt	40

0.2	Deep Resistivity	2000
0.2	Medium Resistivity	2000
0.2	Shallow Resistivity	2000
15000	Line Tension	0

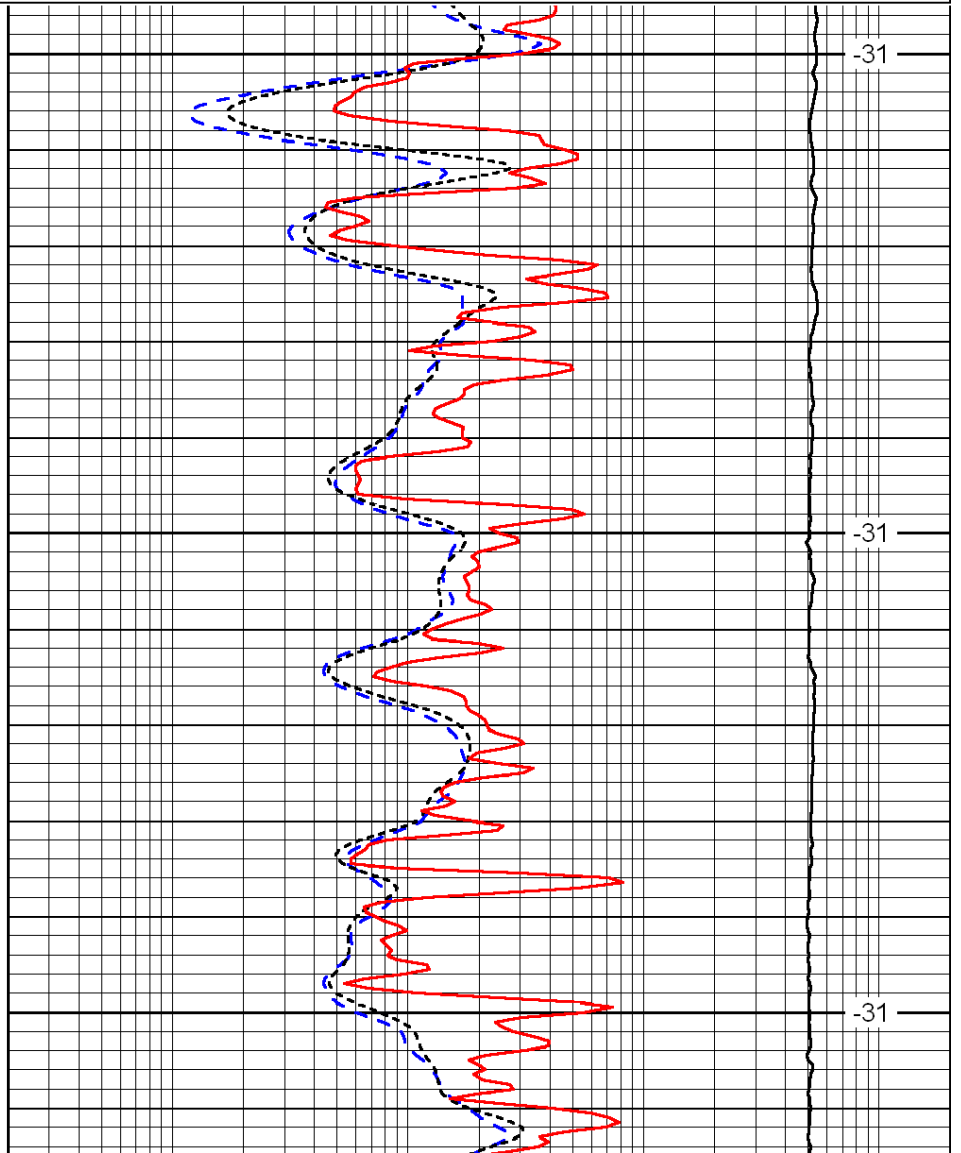
LSPD



3600

3650

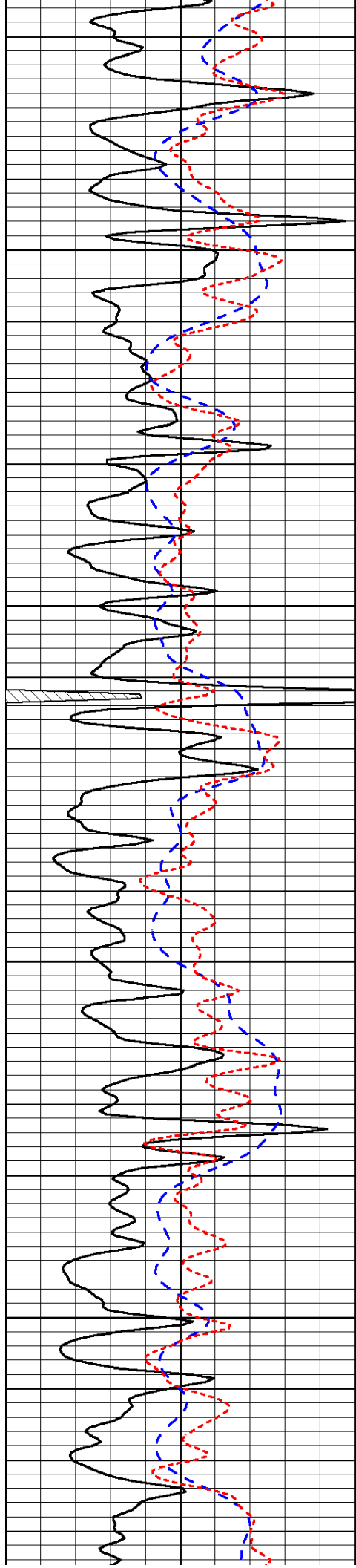
3700



-31

-31

-31

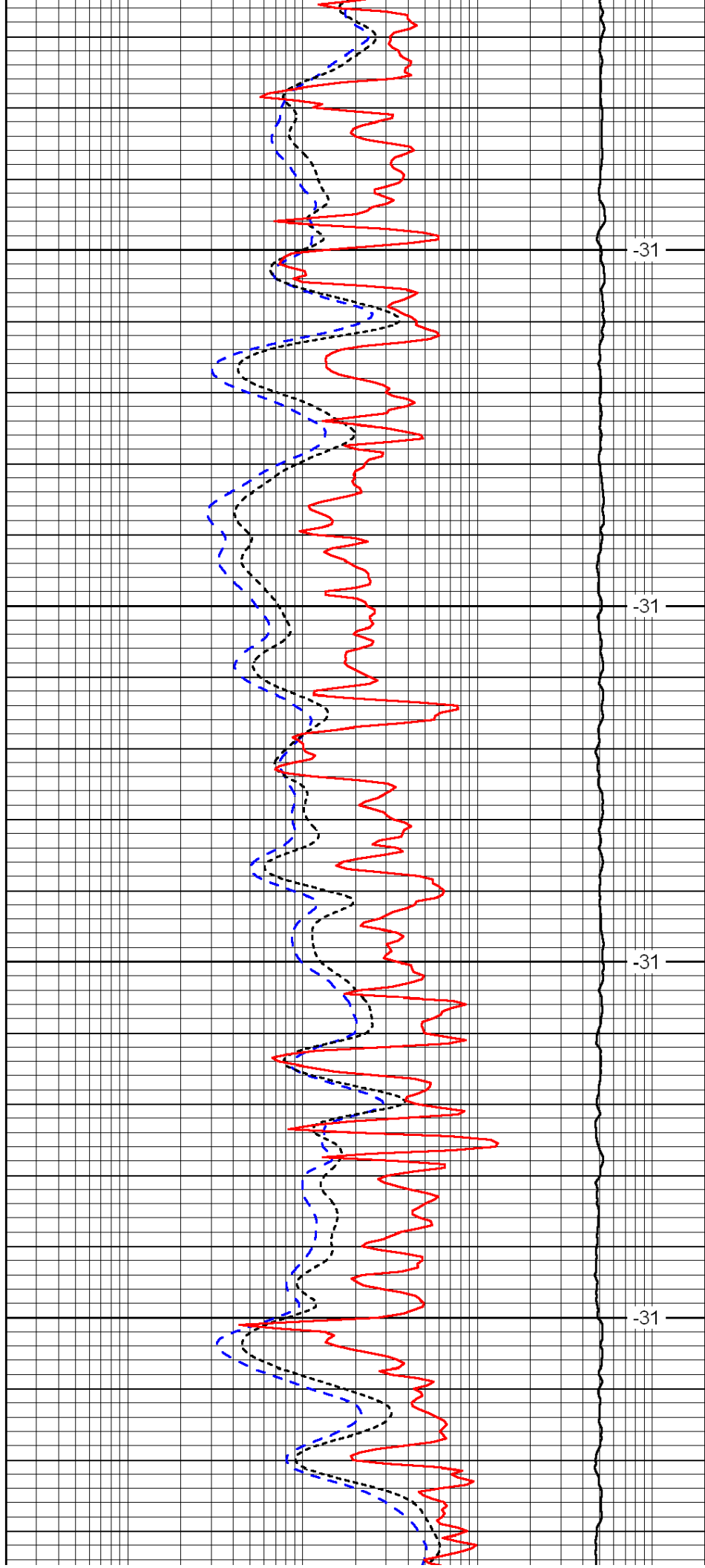


3750

3800

3850

3900

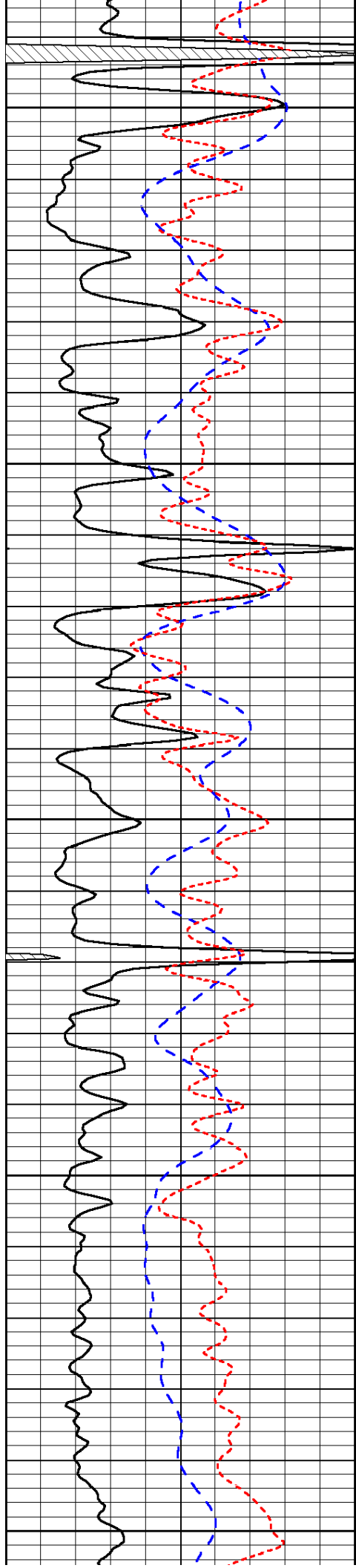


-31

-31

-31

-31



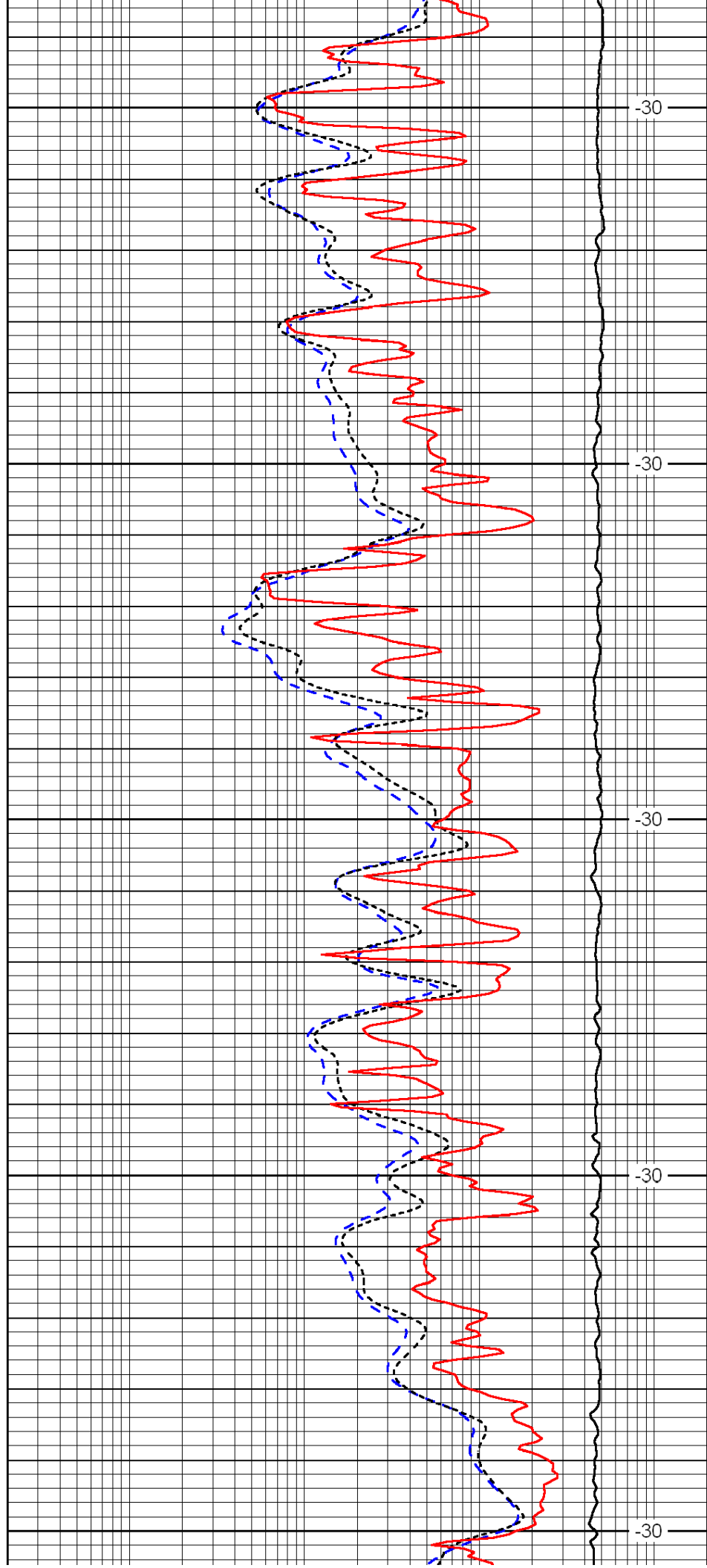
3950

4000

4050

4100

4150



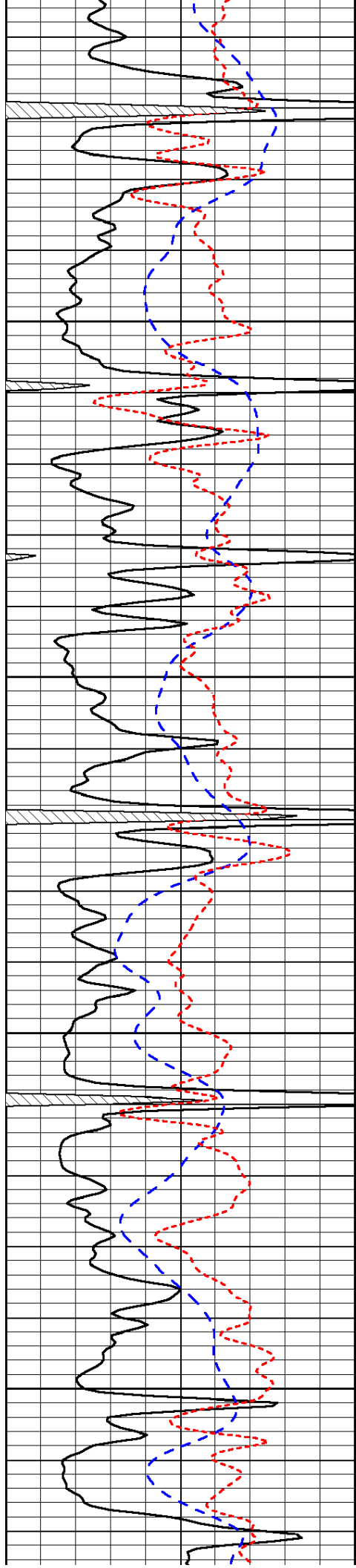
-30

-30

-30

-30

-30

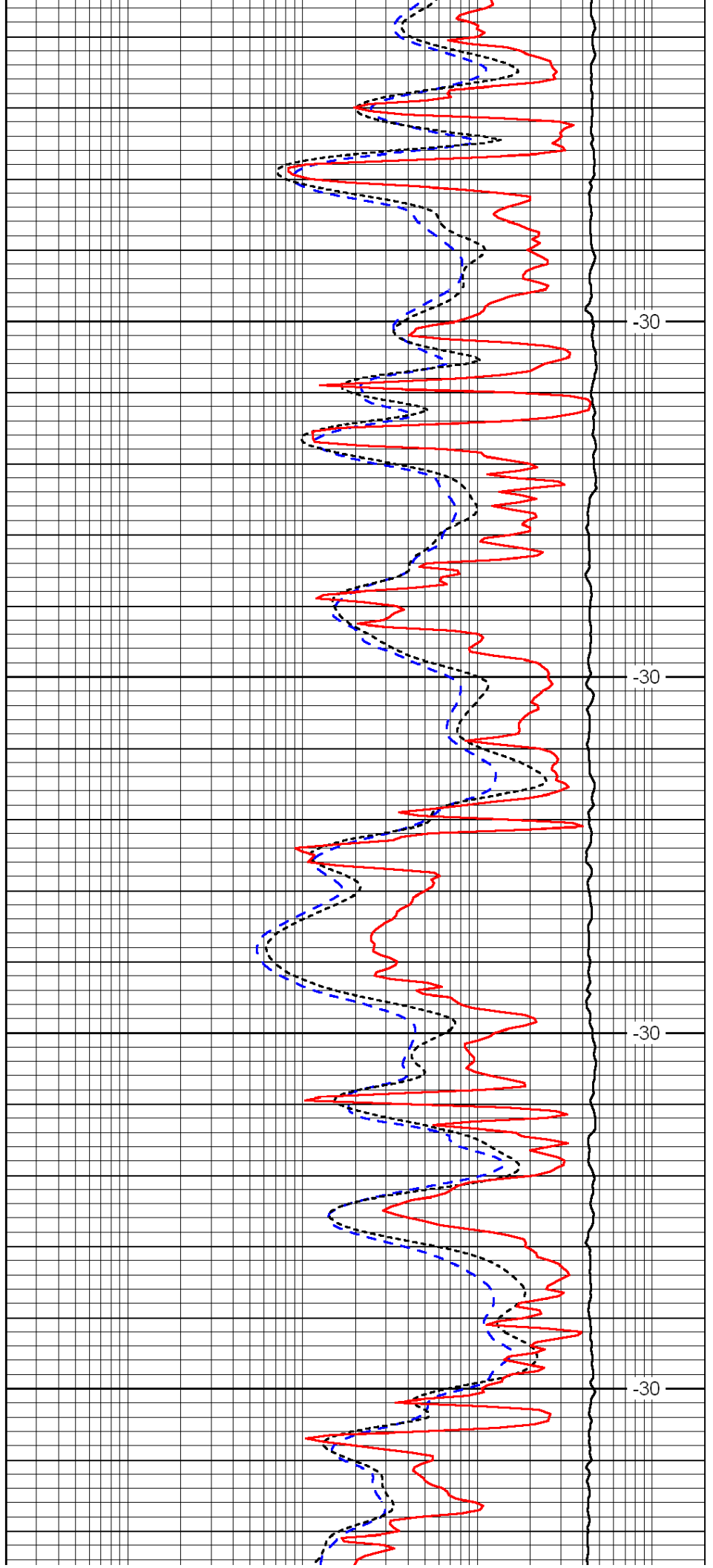


4200

4250

4300

4350

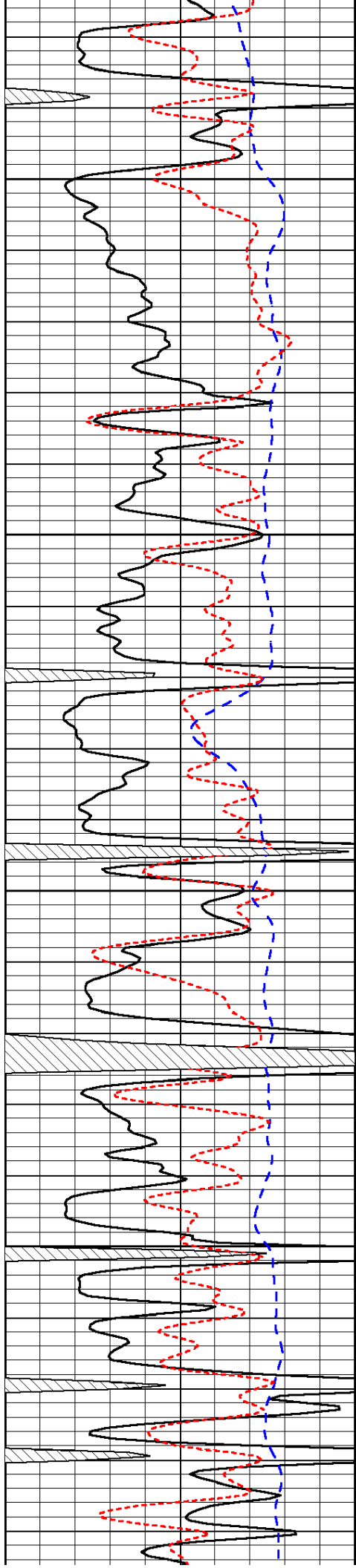


-30

-30

-30

-30

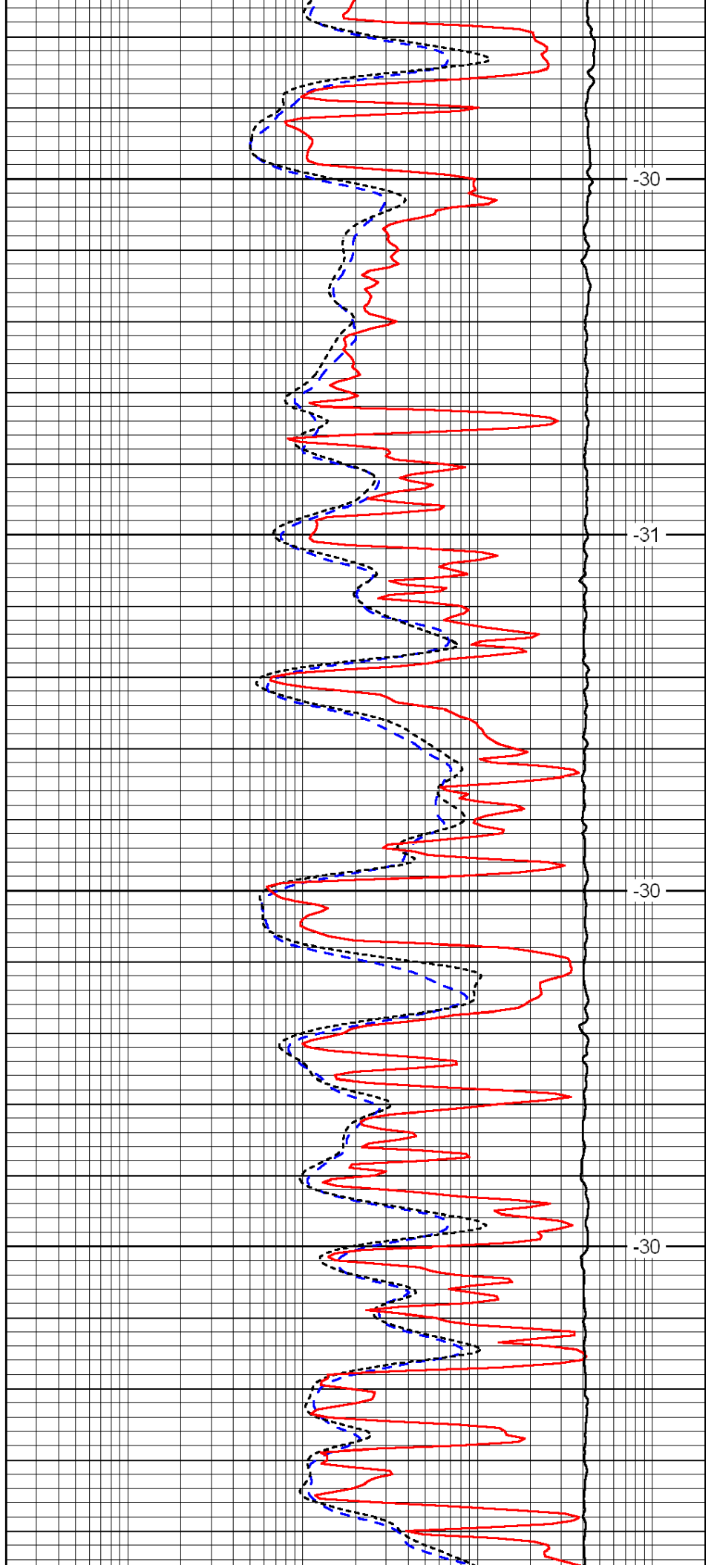


4400

4450

4500

4550

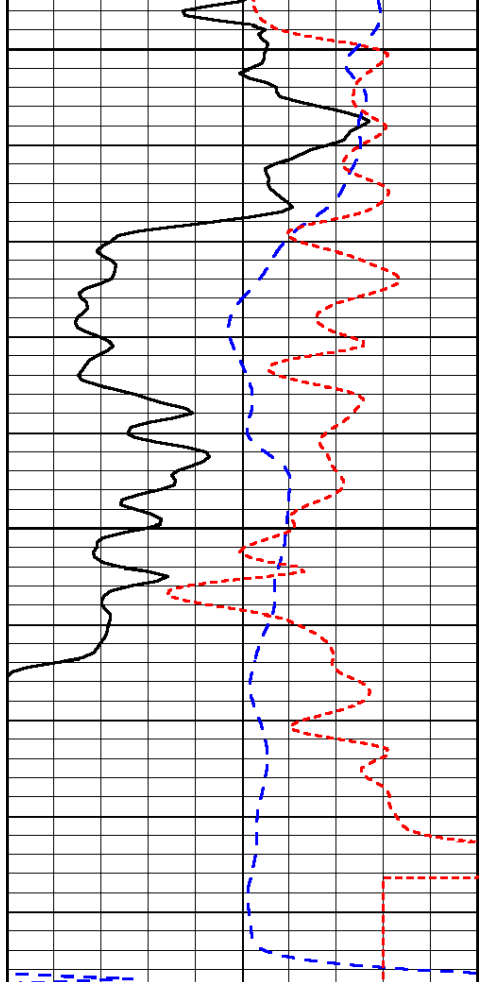


-30

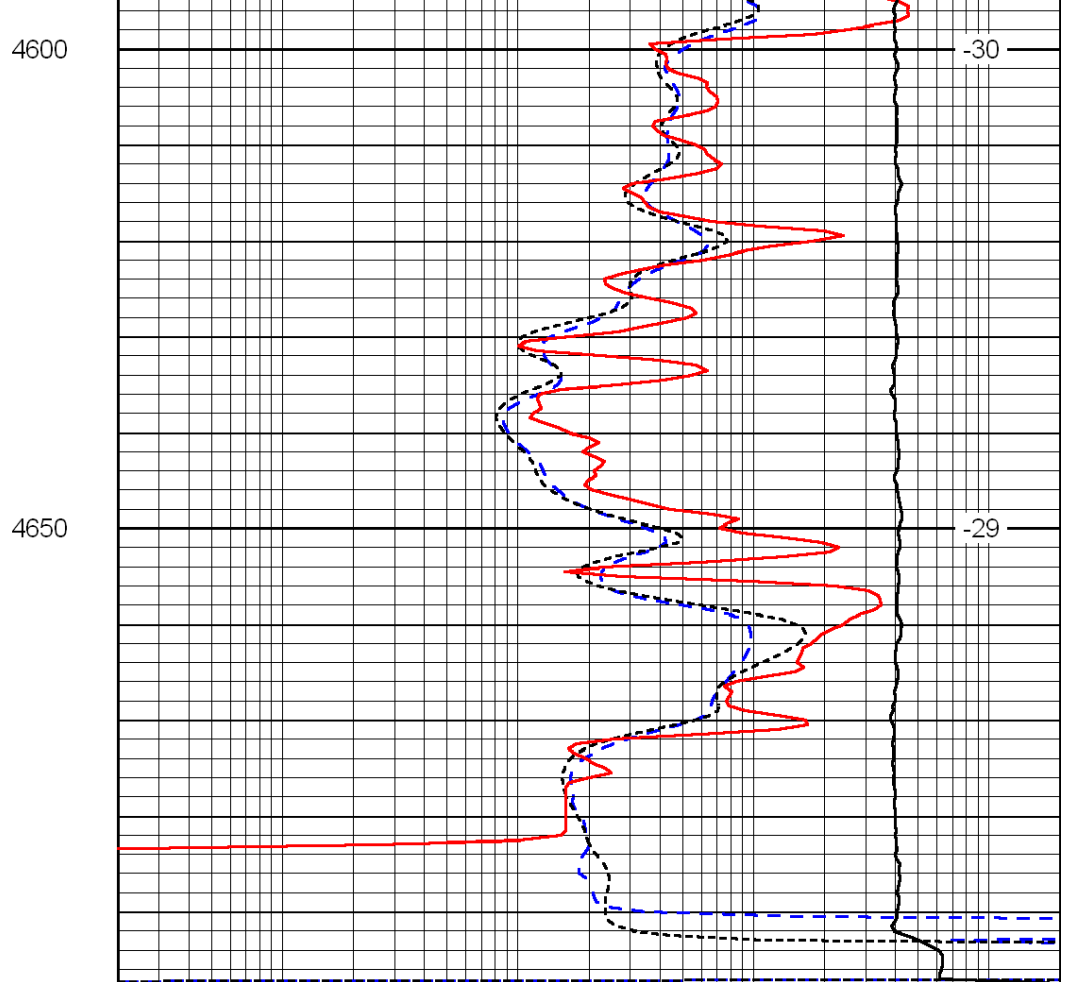
-31

-30

-30



0	Gamma Ray	150
-200	SP (mV)	0
-160	Rxo / Rt	40



0.2	Deep Resistivity	2000
0.2	Medium Resistivity	2000
0.2	Shallow Resistivity	2000
15000	Line Tension	0

LSPD