



MIDWEST SURVEYS
 LOGGING - PERFORATING - CONSULTING SERVICES
 P.O. Box 68, Osawatomie, KS 66064
 913 / 755 - 2128

GAMMA RAY / NEUTRON / CCL

File No. _____

Company **Enerlex Kansas, Inc.**

Well **Russell No. BSI-RL-13**

Field **Paola / Rantoul**

County **Franklin** State **Kansas**

Location **2620 FSL & 2340' FEL**

Other Services **Perforate**

Sec. **17** Twp. **18S** Rge. **21E**

Permanent Datum **GL** Elevation **NA**

Log Measured From **GL** K.B. **NA**

Drilling Measured From **GL** D.F. **NA**

Date **4-02-2012** Elevation **GL NA**

Run Number **One**

Depth Driller **680.0**

Depth Logger **686.5**

Bottom Logged Interval **655.5**

Top Log Interval **20.0**

Fluid Level **Full**

Type Fluid **Water**

Density / Viscosity **NA**

Salinity - PPM Cl **NA**

Max Recorded Temp **NA**

Estimated Cement Top **0.0**

Equipment No. **104** Location **Osawatomie**

Recorded By **Gary Windisch**

Witnessed By **Jay Schenkel**

BORE-HOLE RECORD

CASING RECORD

RUIN

BIT

NO. FROM TO SIZE WGT. FROM TO

One 9.875" 0.0 20.0 7.00" 0.0 20.0

Two 5.625" 20.0 690.0 2.875" 0.0 692.0

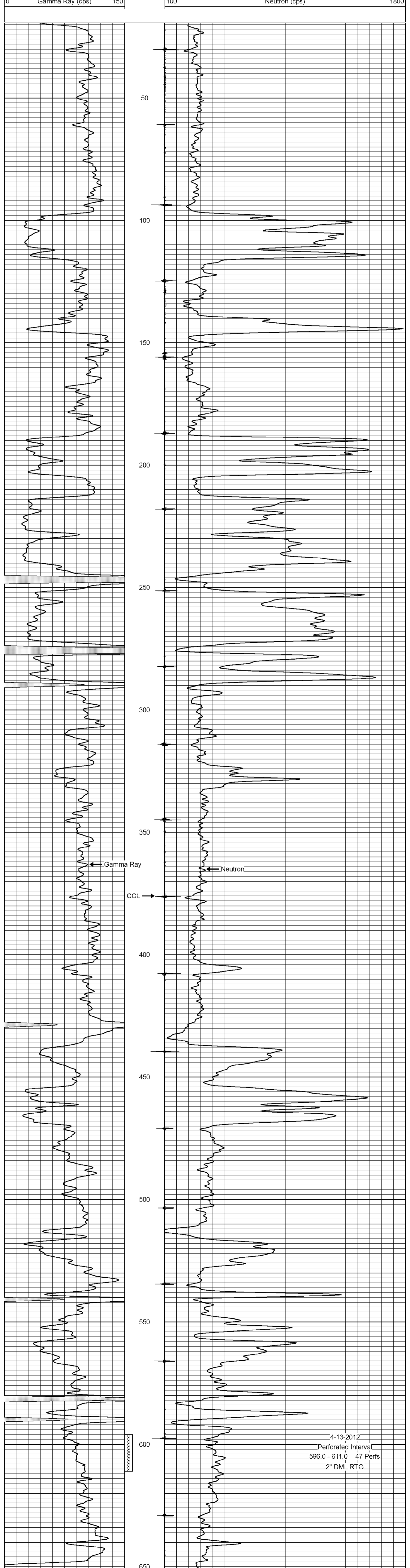
<<< Fold Here >>>

All interpretations are opinions based on inferences from electrical or other measurements and we cannot and do not guarantee the accuracy or correctness of any interpretation, and we shall not, except in the case of gross or willful negligence on our part, be liable or responsible for any loss, costs, damages, or expenses incurred or sustained by anyone resulting from any interpretation made by any of our officers, agents or employees. These interpretations are also subject to our general terms and conditions set out in our current Price Schedule.

Comments

Drilling Contractor : JTC Oil, Inc.

Database File: rusel13ir.db
 Dataset Pathname: pass1
 Presentation Format: gr-n-ccl
 Dataset Creation: Mon Apr 02 14:41:00 2012 by Log SCH 111116
 Charted by: Depth in Feet scaled 1:240



4-13-2012
 Perforated Interval
 596.0 - 611.0 47 Perfs
 2" DML RTG