



DIGITAL LOG (785) 625-3858

Dual Induction Log

15-015-23,940-00-00

API No.

Company Range Oil Company, Inc.

Well Bowman No. 1

Field Rose Hill

County Butler State Kansas

Location 940' FSL & 980' FWL

Sec: 4 Twp: 29 S Rge: 3 E

Permanent Datum Ground Level Elevation 1314
 Log Measured From Kelly Bushing 10 Ft. Above Perm. Datum
 Drilling Measured From Kelly Bushing

Other Services
 CNL/CDL
 Elevation
 K.B. 1324
 D.F. 1314
 G.L. 1314

Date	5/12/2012	
Run Number	One	
Depth Driller	3185	
Depth Logger	3184	
Bottom Logged Interval	3183	
Top Log Interval	200	
Casing Driller	8.625 @ 218	
Casing Logger	219	
Bit Size	7.875	
Type Fluid in Hole	Chemical	
Salinity, ppm CL	1,400	
Density / Viscosity	9.2 52	
pH / Fluid Loss	9.0 6.8	
Source of Sample	Flowline	
Rm @ Meas. Temp	1.62 @ 62	
Rmf @ Meas. Temp	1.22 @ 62	
Rmc @ Meas. Temp	2.19 @ 62	
Source of Rmf / Rmc	Charts	
Rm @ BHT	.93 @ 108	
Operating Rig Time	3 1/2 Hours	
Max Rec. Temp. F	108	
Equipment Number	17	
Location	Hays	
Recorded By	D. Martin	
Witnessed By	Roger Martin	John Washburn

<<< Fold Here >>>

All interpretations are opinions based on inferences from electrical or other measurements and we cannot and do not guarantee the accuracy or correctness of any interpretation, and we shall not, except in the case of gross or willful negligence on our part, be liable or responsible for any loss, costs, damages, or expenses incurred or sustained by anyone resulting from any interpretation made by any of our officers, agents or employees. These interpretations are also subject to our general terms and conditions set out in our current Price Schedule.

Comments

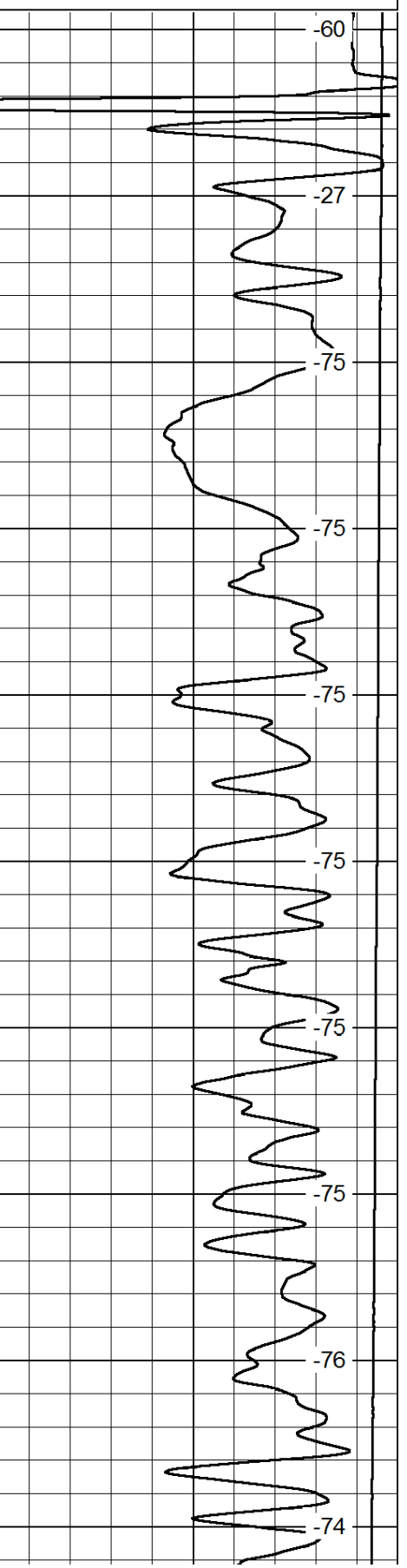
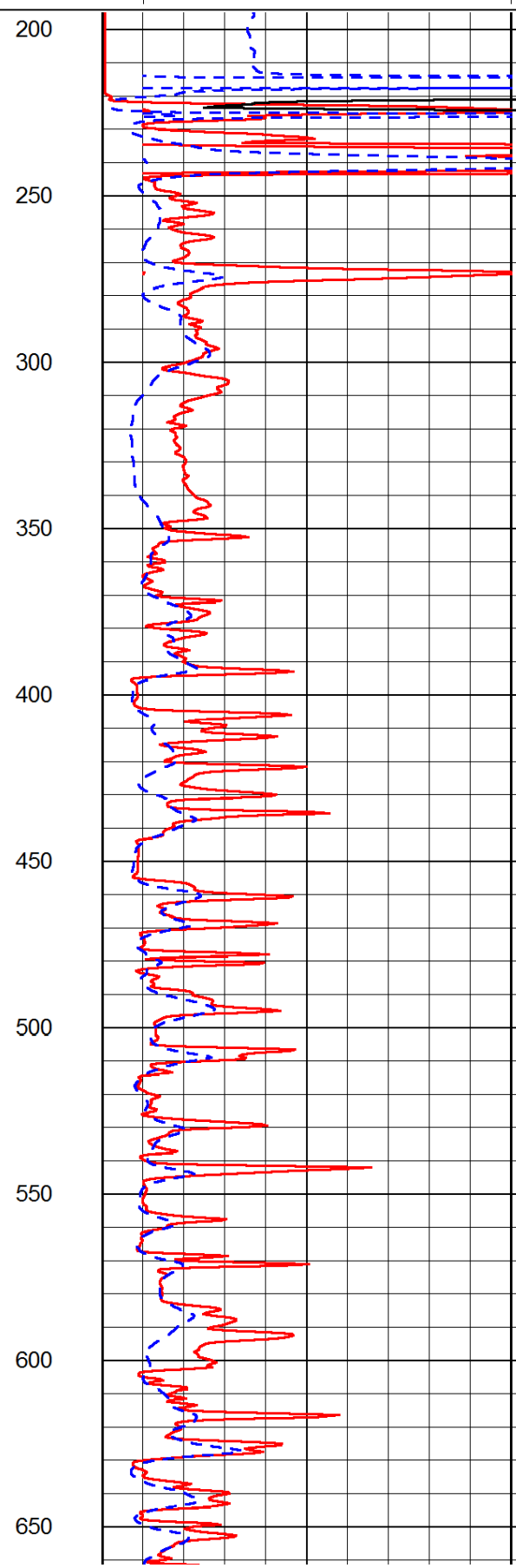
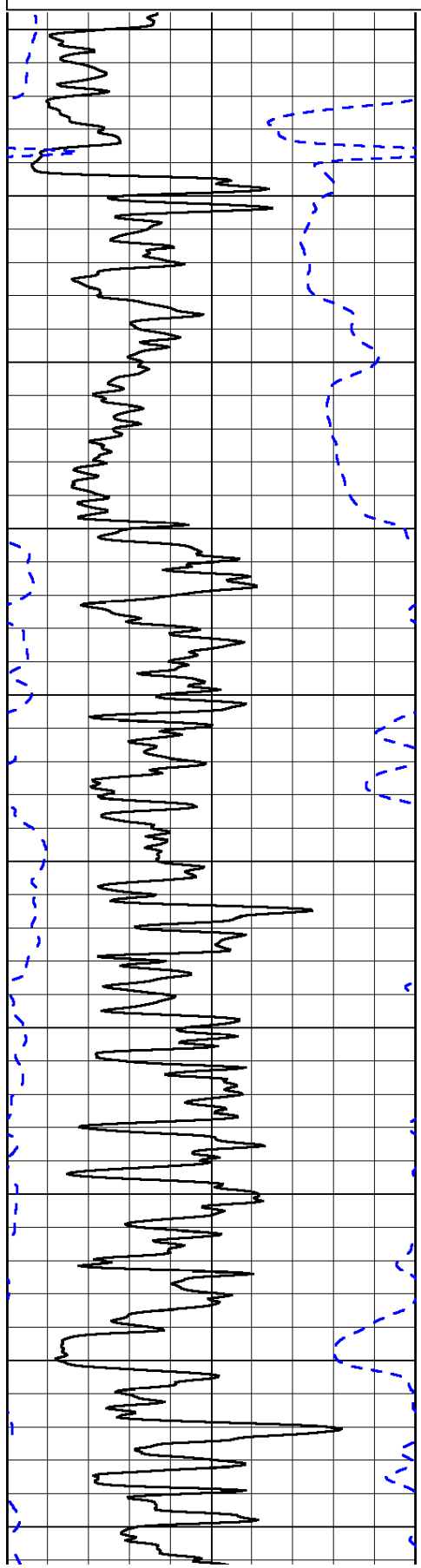
Thank you for using Log-Tech, Inc.
 (785) 625-3858
 Rose Hill, KS
 S Edge of Town to 190 Rd.,
 1 E to Prarie Creek Rd., 1/4 N, E Into

Database File: c:\warrior\data\range_bowman no. 1\ranhd.db
 Dataset Pathname: dil/ranstk
 Presentation Format: dil2in
 Dataset Creation: Sat May 12 07:40:20 2012
 Charted by: Depth in Feet scaled 1:600

0	Gamma Ray	150
-200	SP (mV)	0

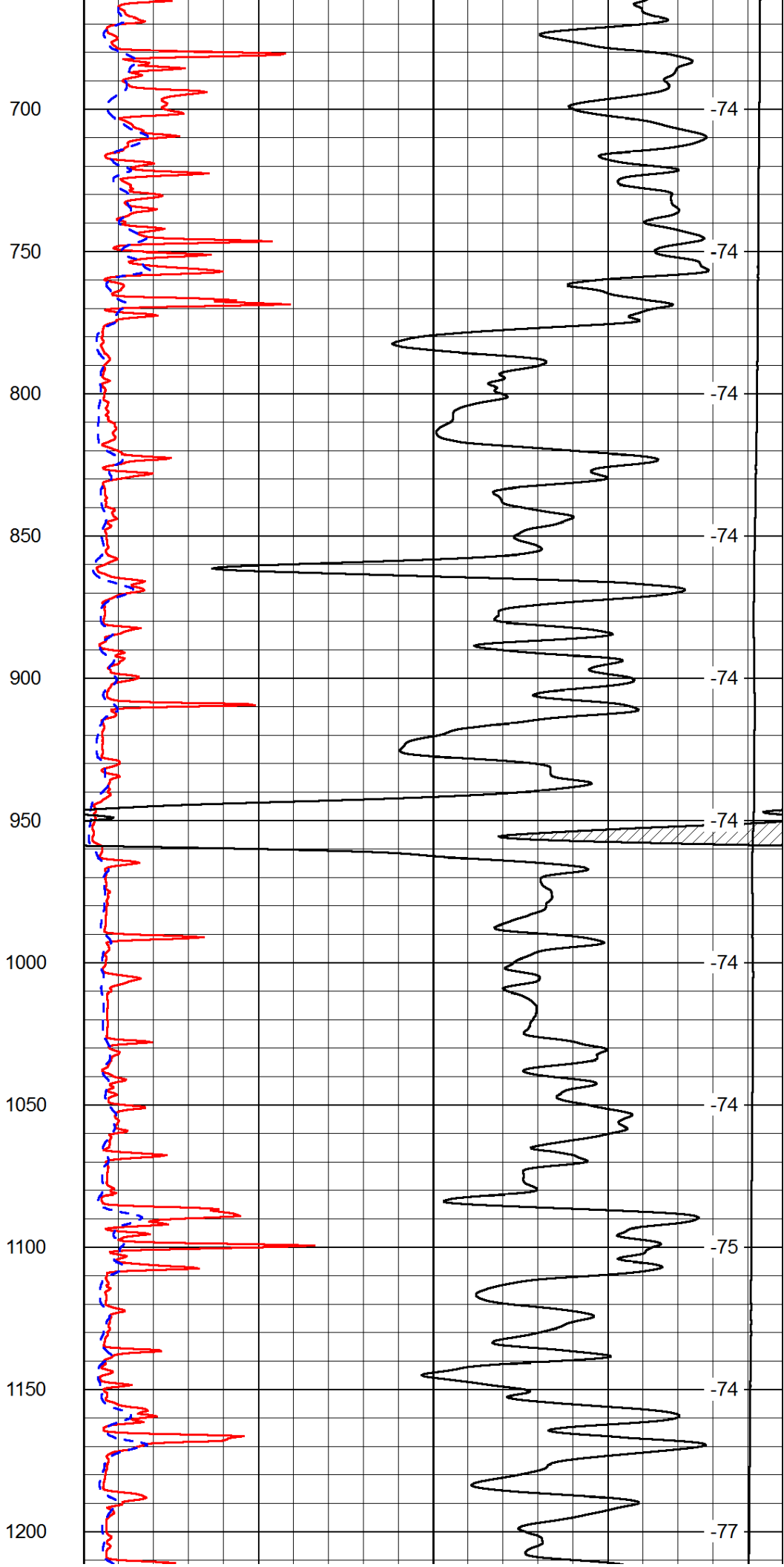
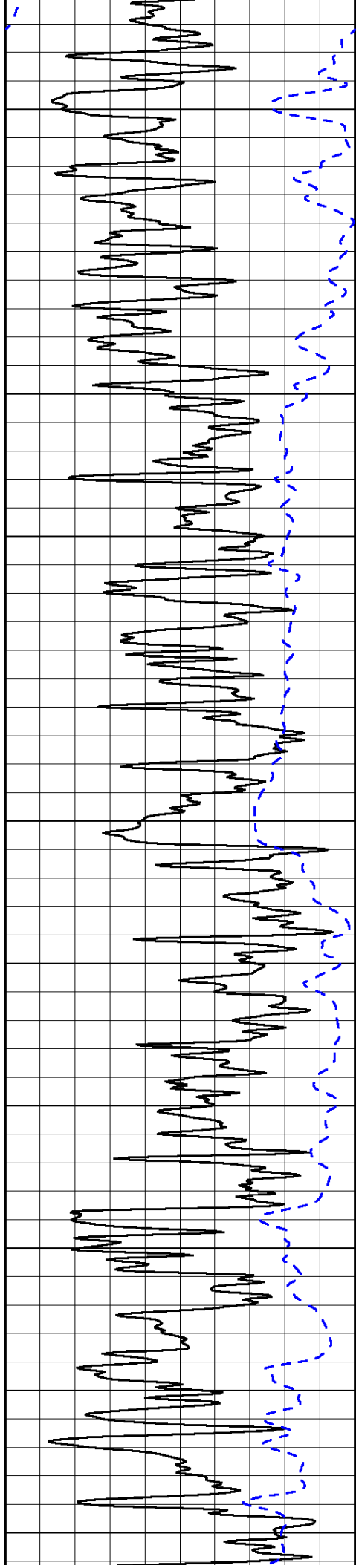
0	Shallow Resistivity	50
0	Deep Resistivity	50
1000	Conductivity	0
15000	Line Tension	0
50	Shallow Resistivity	500
50	Deep Resistivity	500

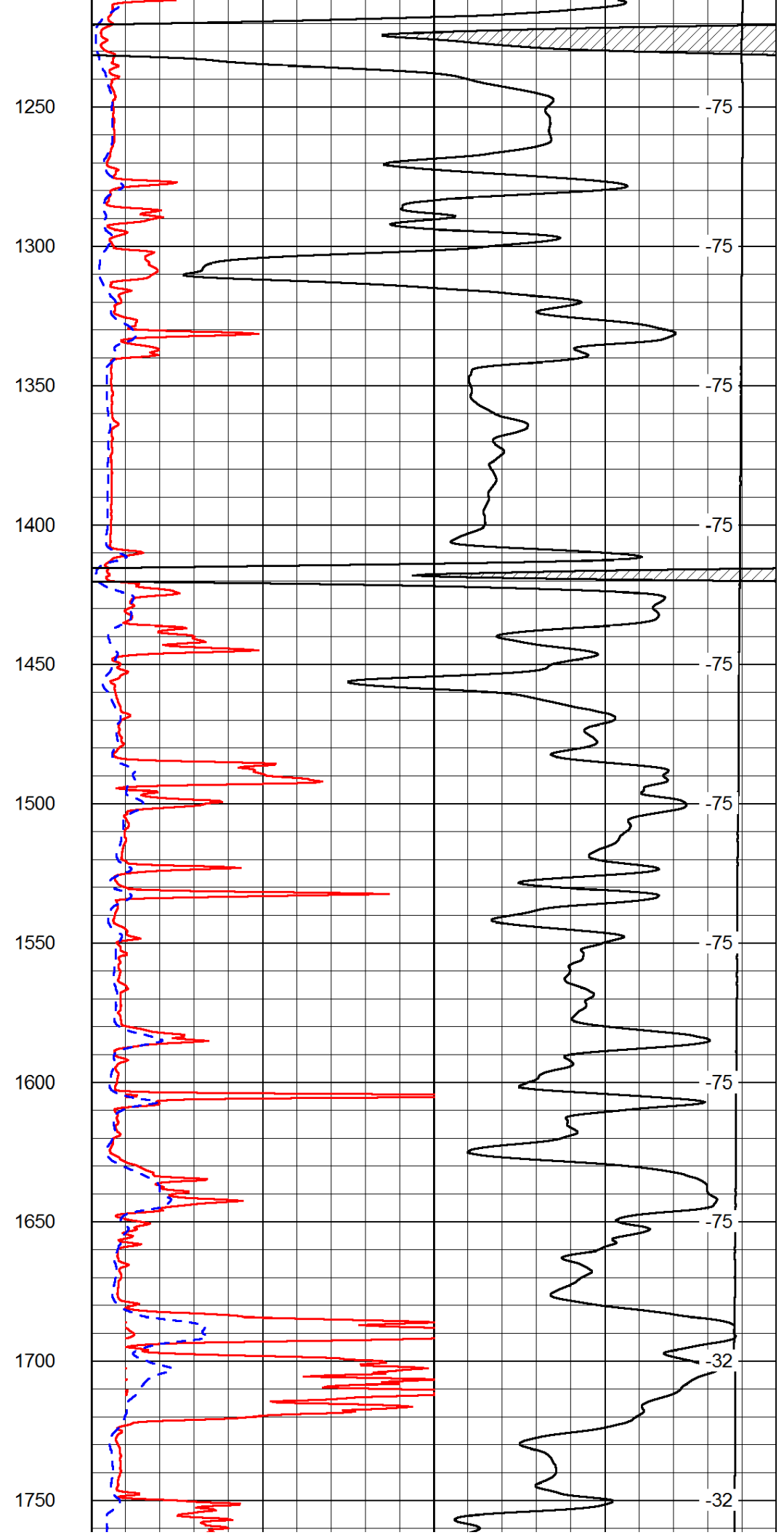
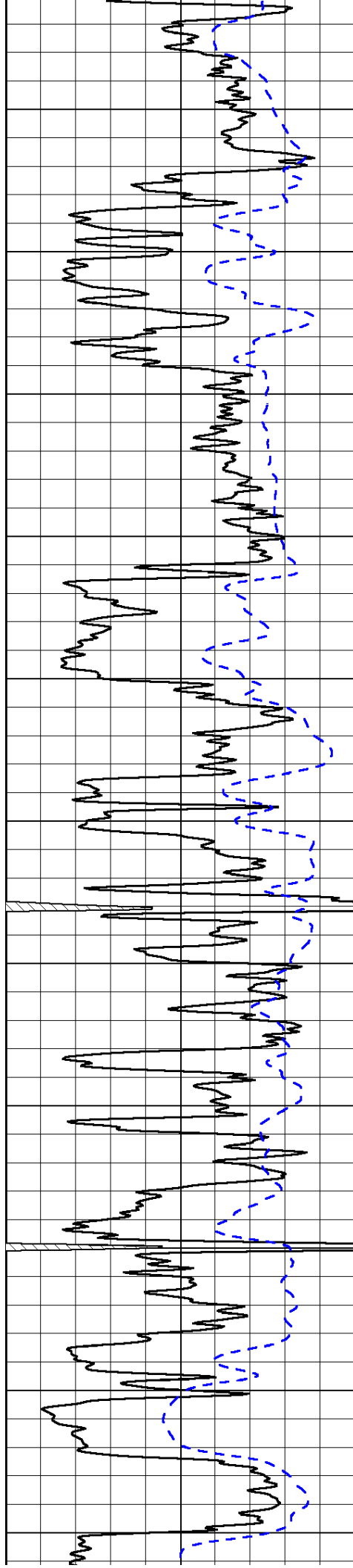
LSPD

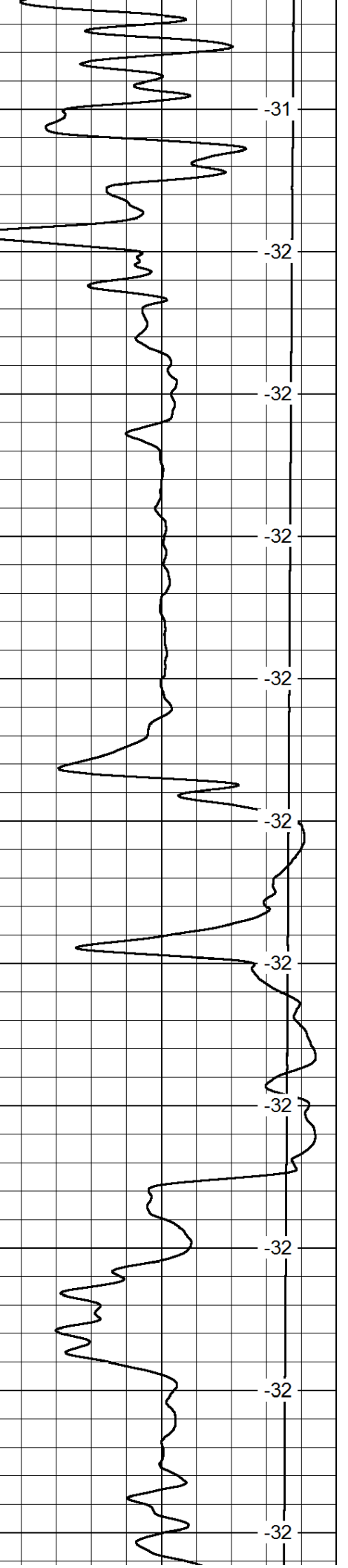
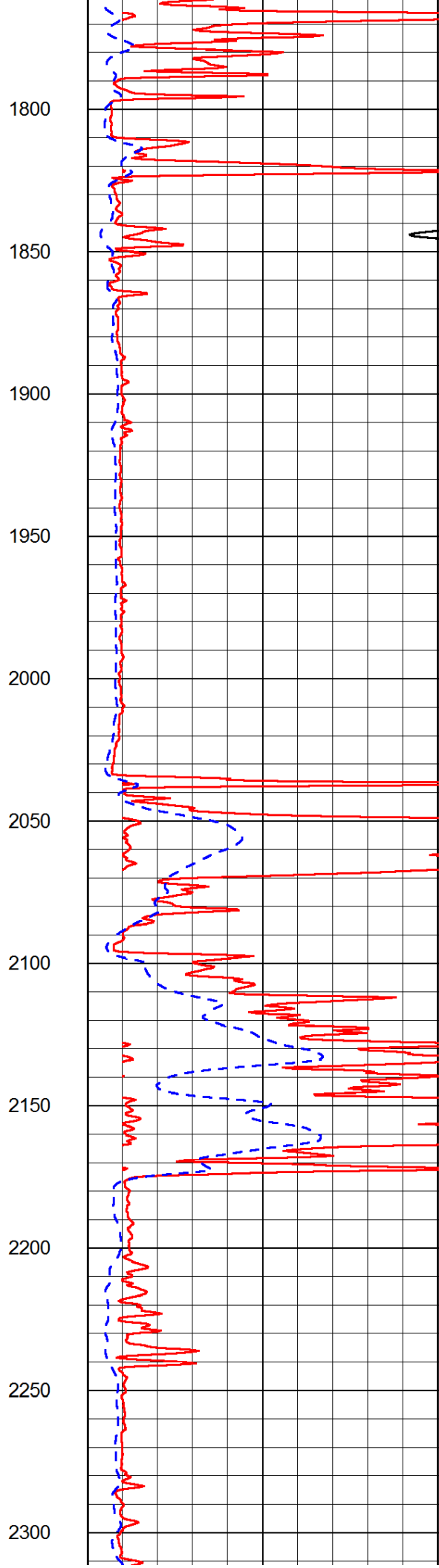
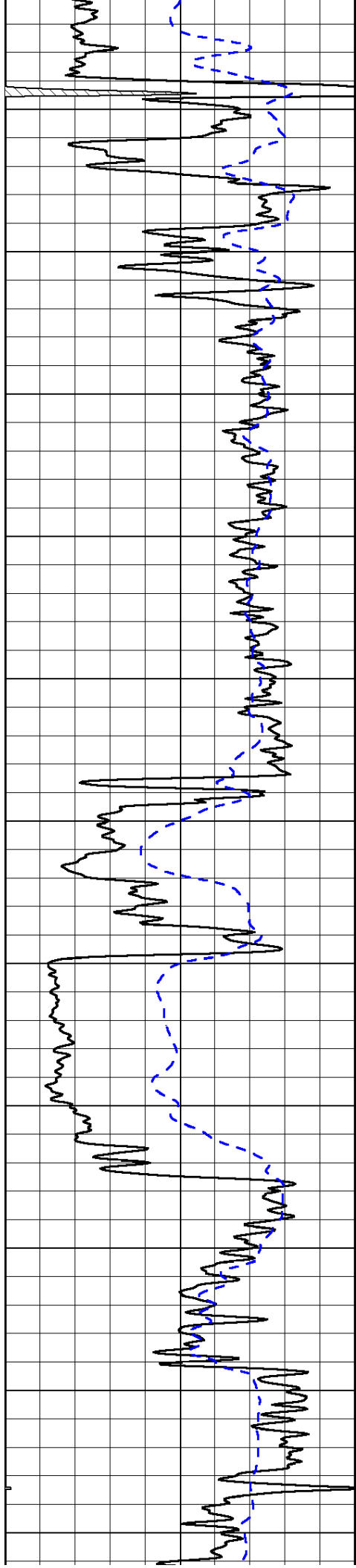


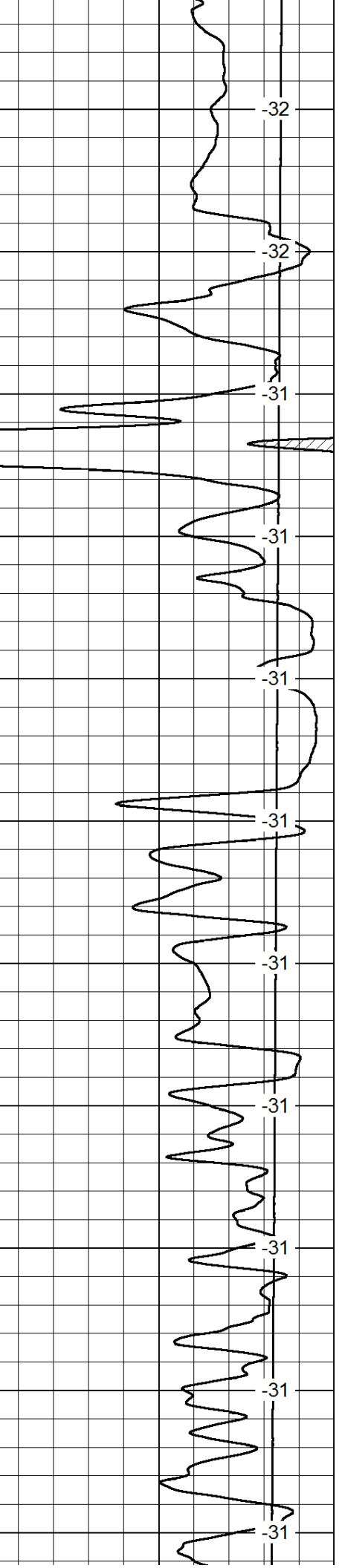
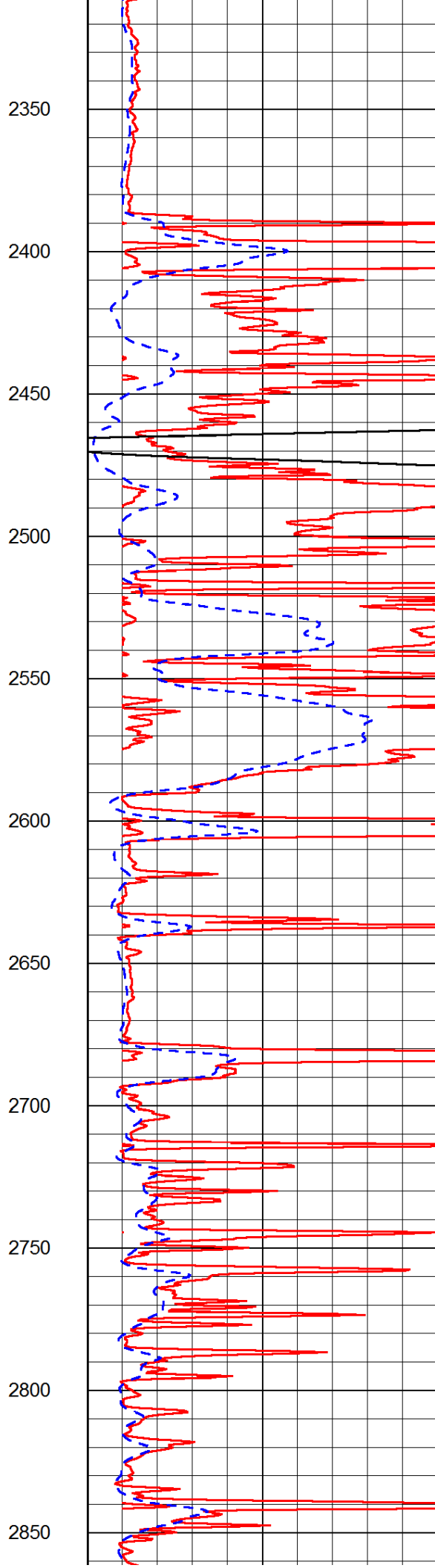
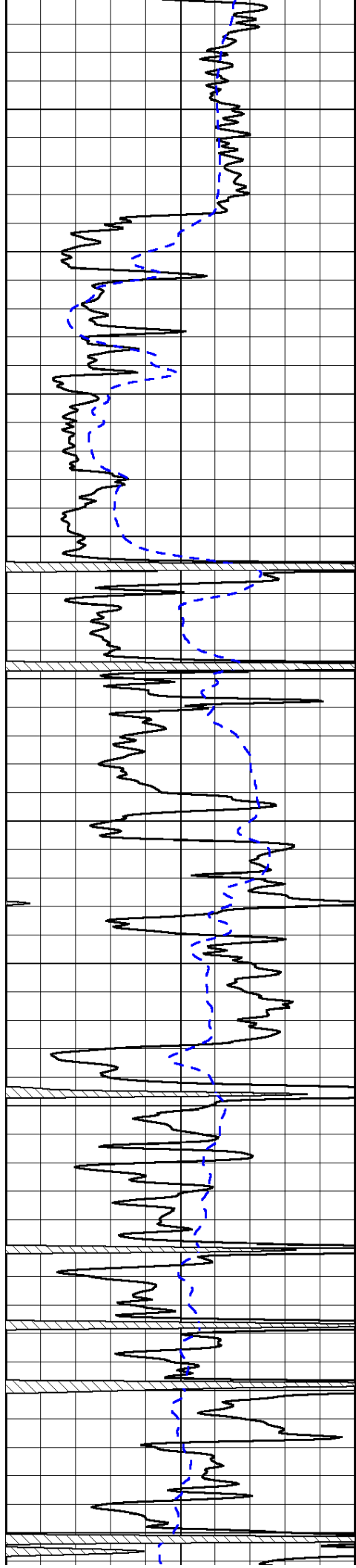
200
250
300
350
400
450
500
550
600
650

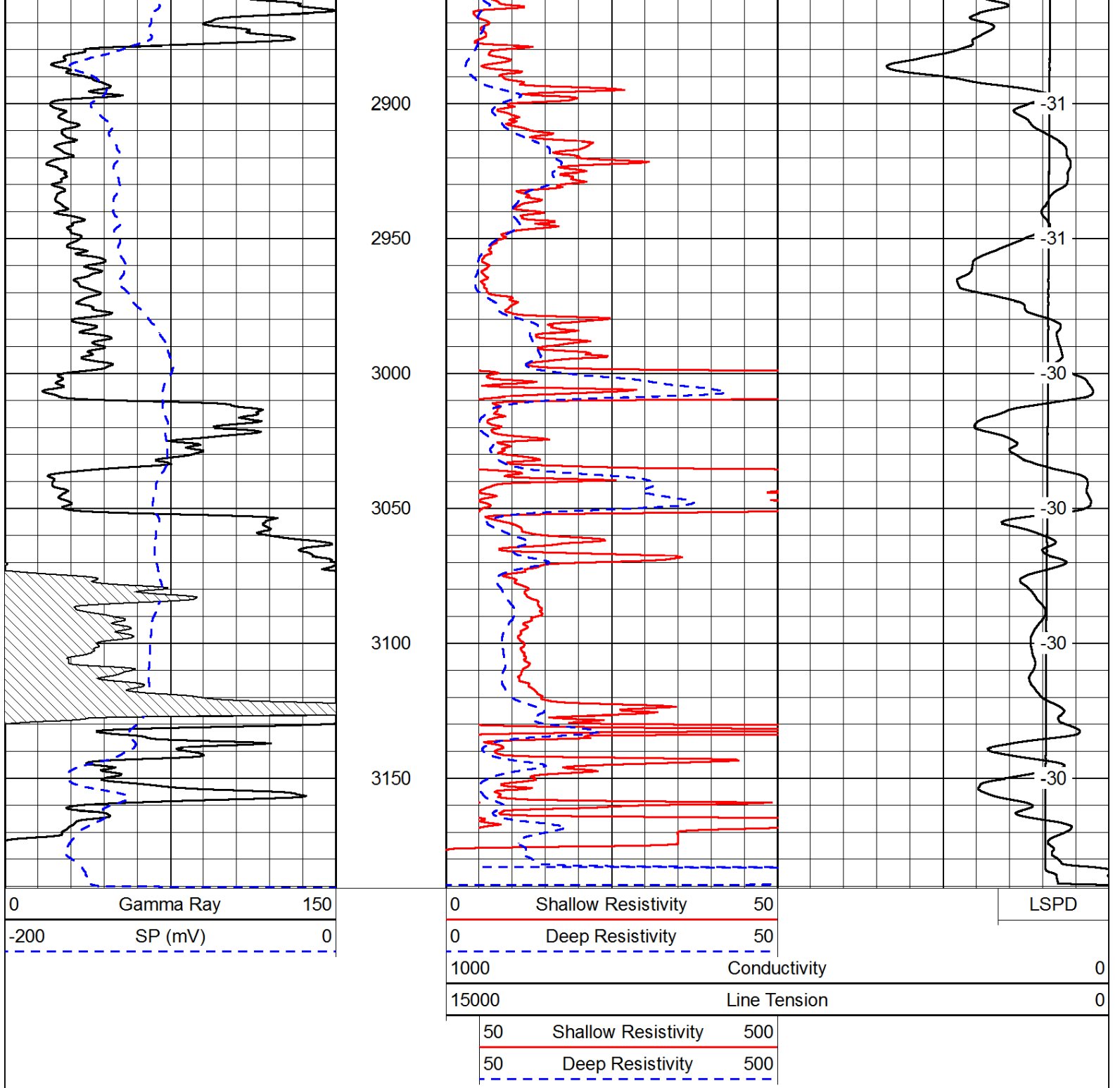
-60
-27
-75
-75
-75
-75
-75
-75
-76
-74



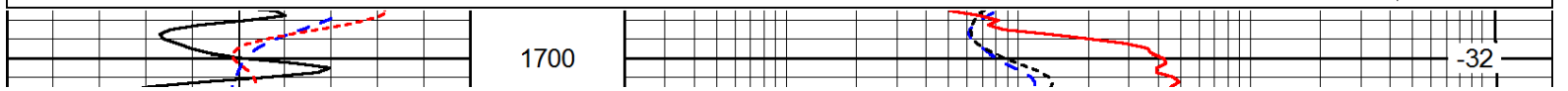
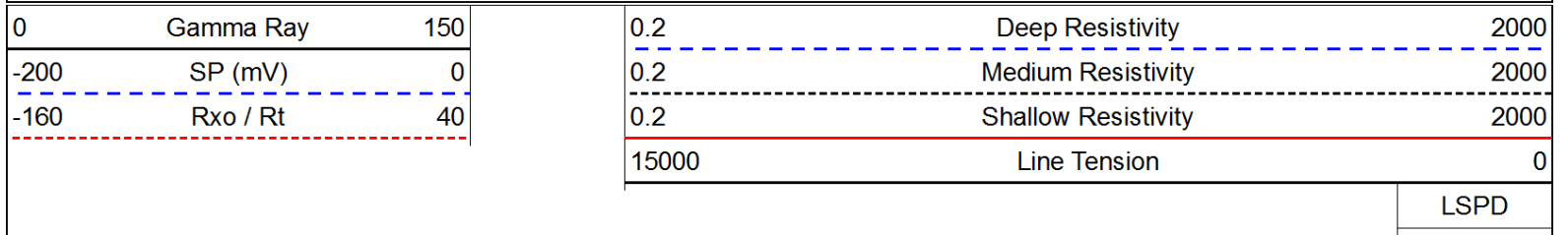


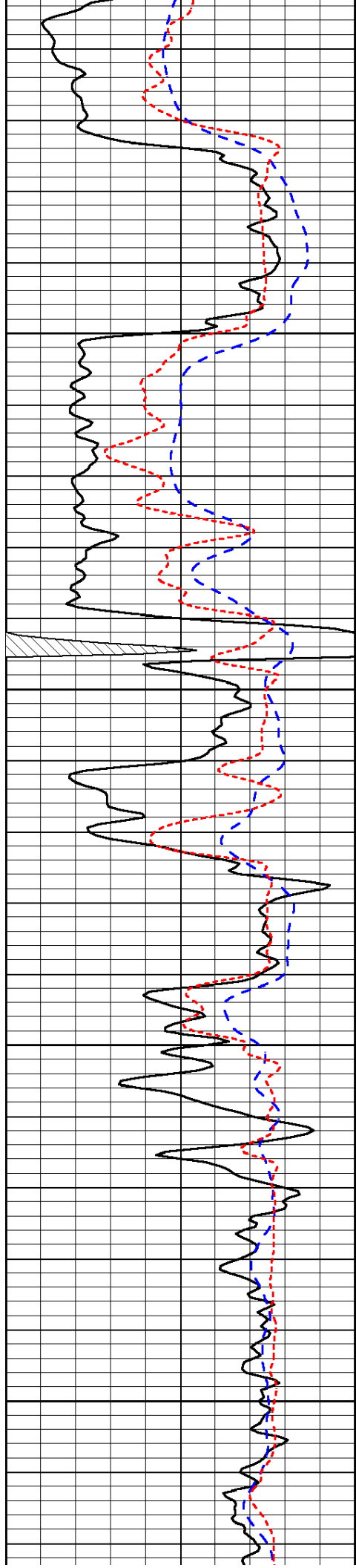






Database File: c:\warrior\data\range_bowman no. 1\ranhd.db
 Dataset Pathname: dil/ranstk
 Presentation Format: dil
 Dataset Creation: Sat May 12 07:40:20 2012
 Charted by: Depth in Feet scaled 1:240



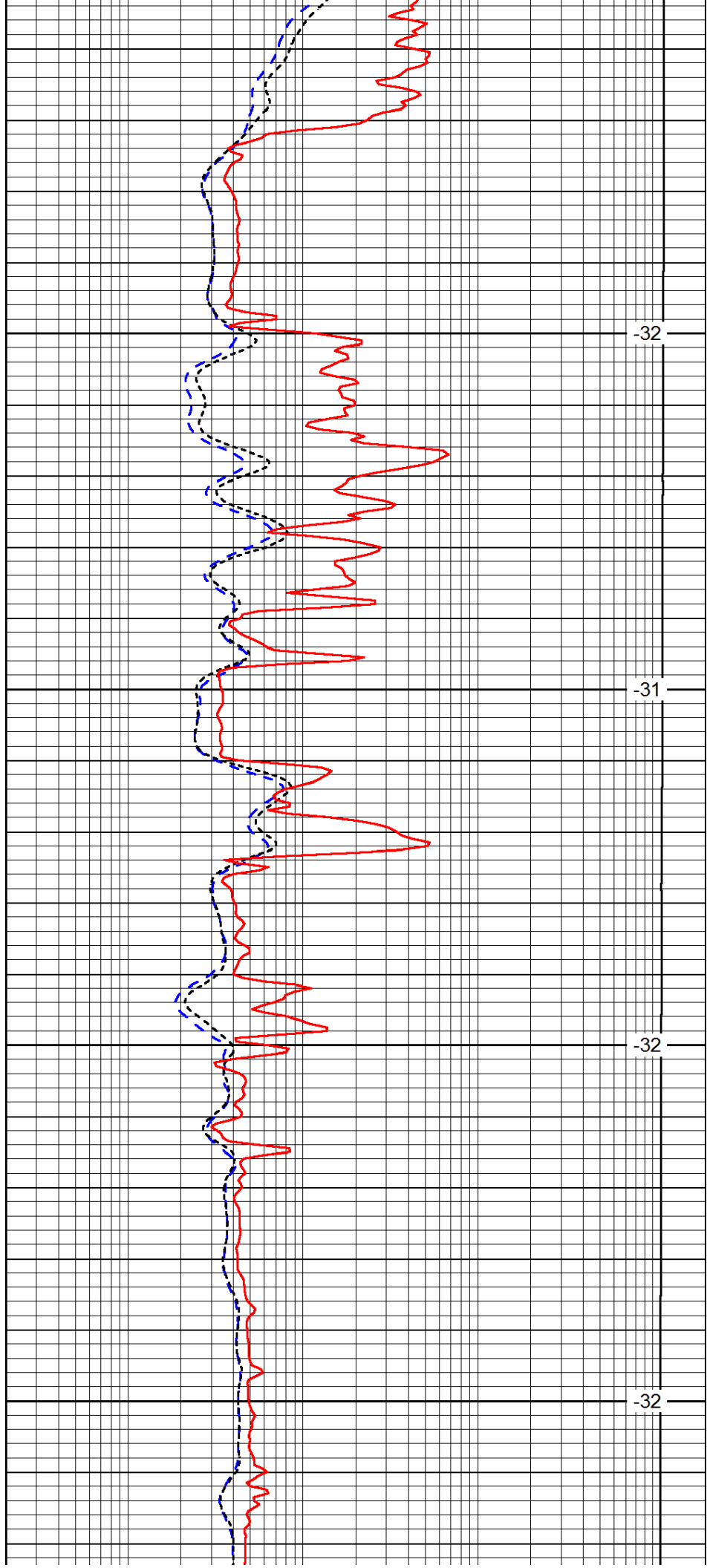


1750

1800

1850

1900

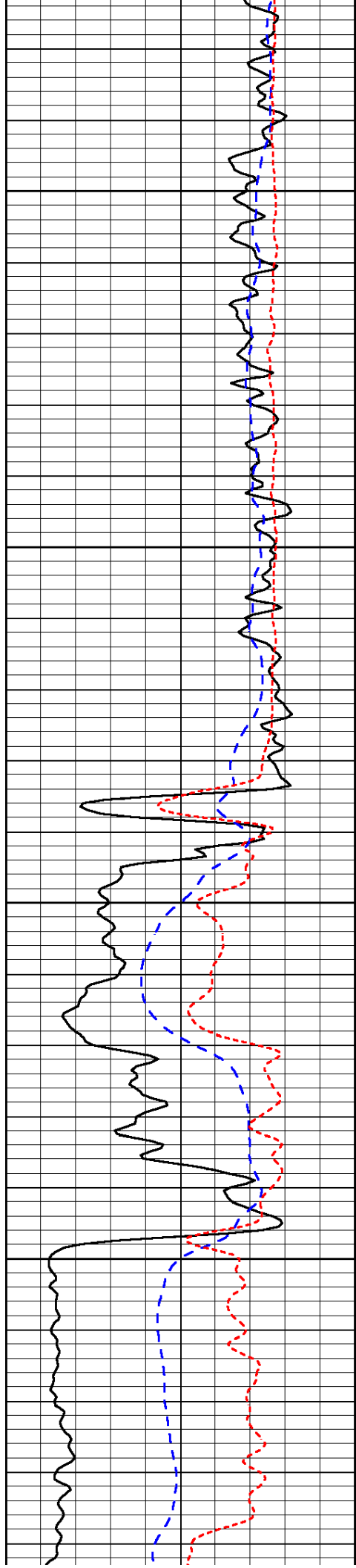


-32

-31

-32

-32

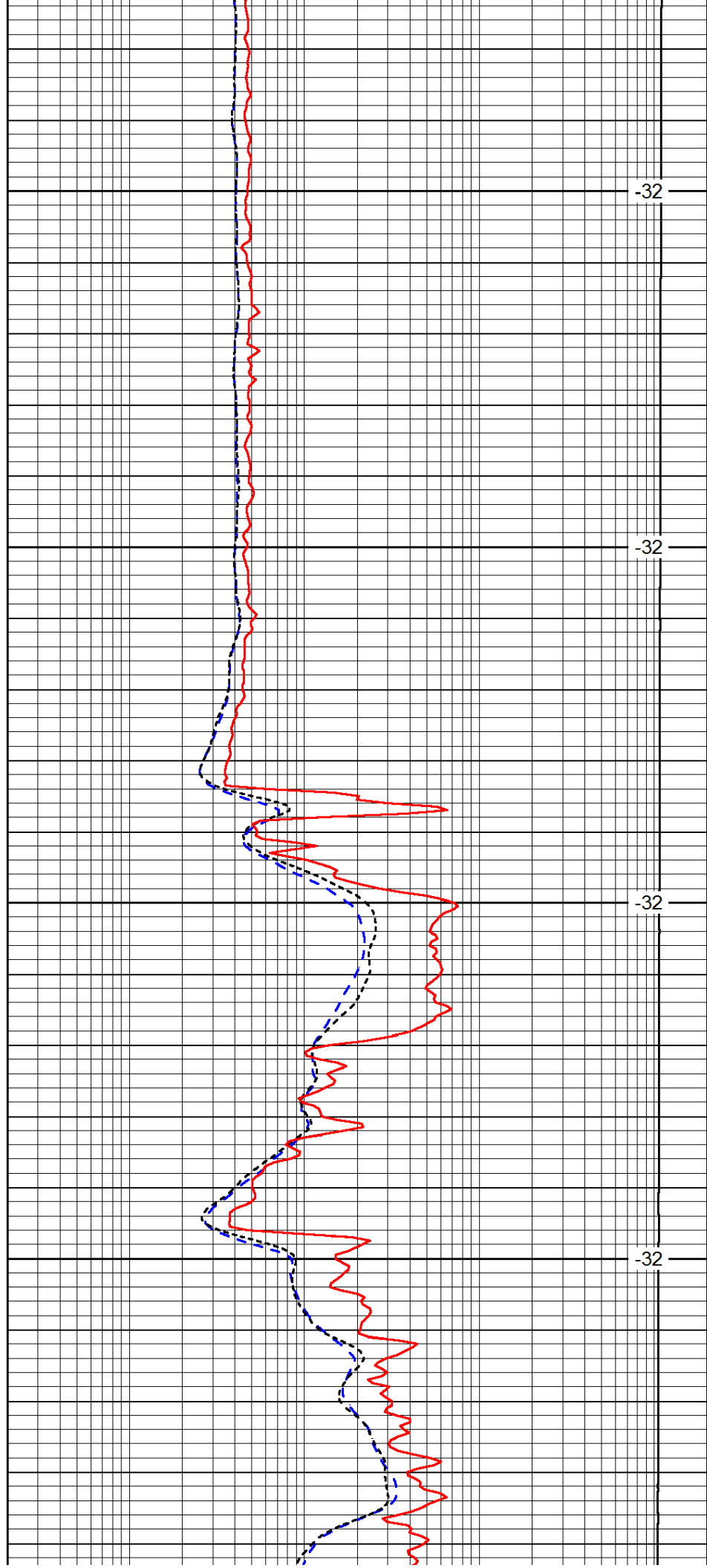


1950

2000

2050

2100

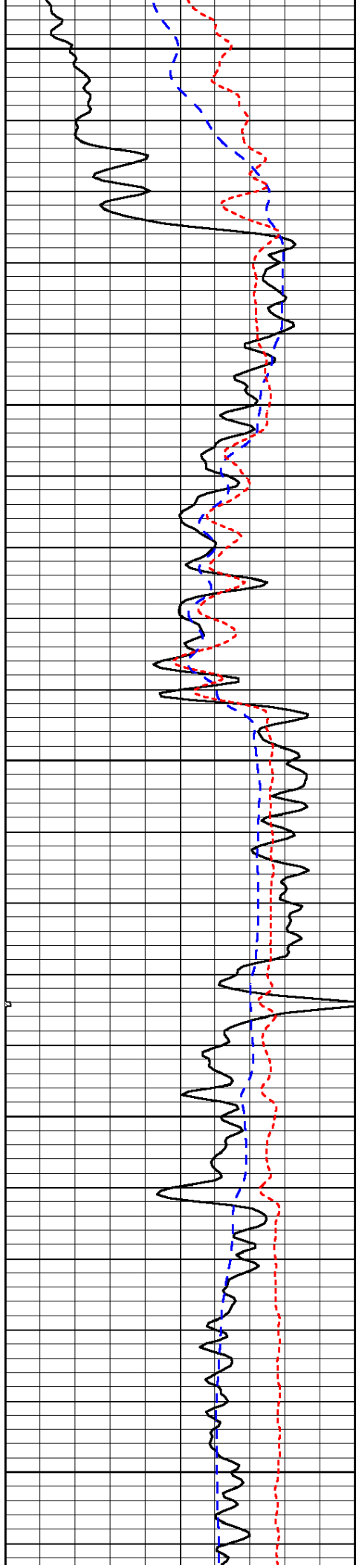


-32

-32

-32

-32



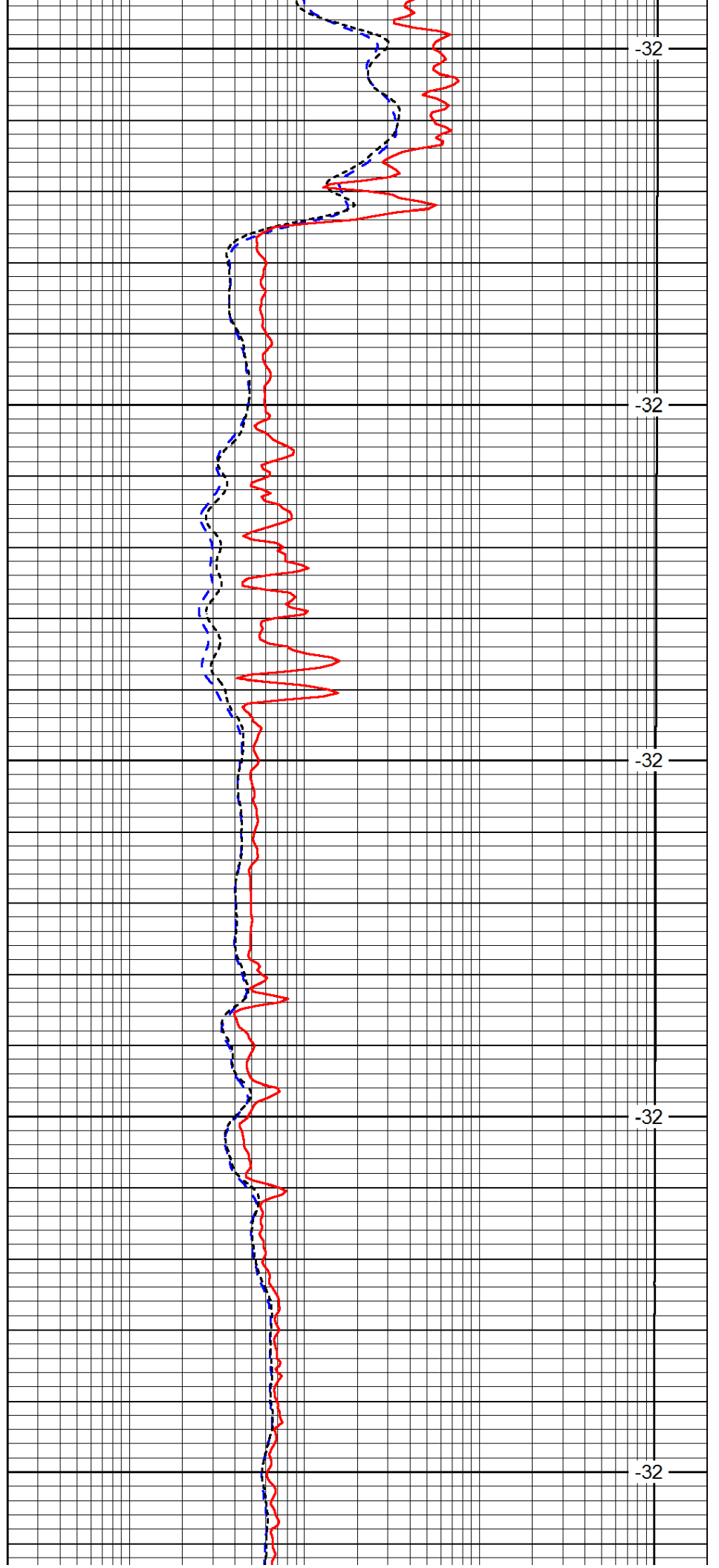
2150

2200

2250

2300

2350



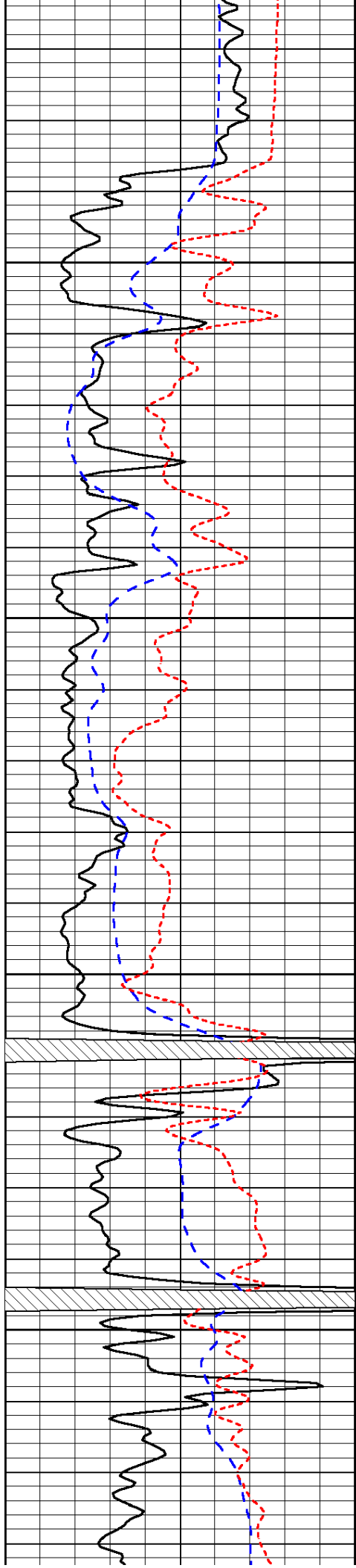
-32

-32

-32

-32

-32

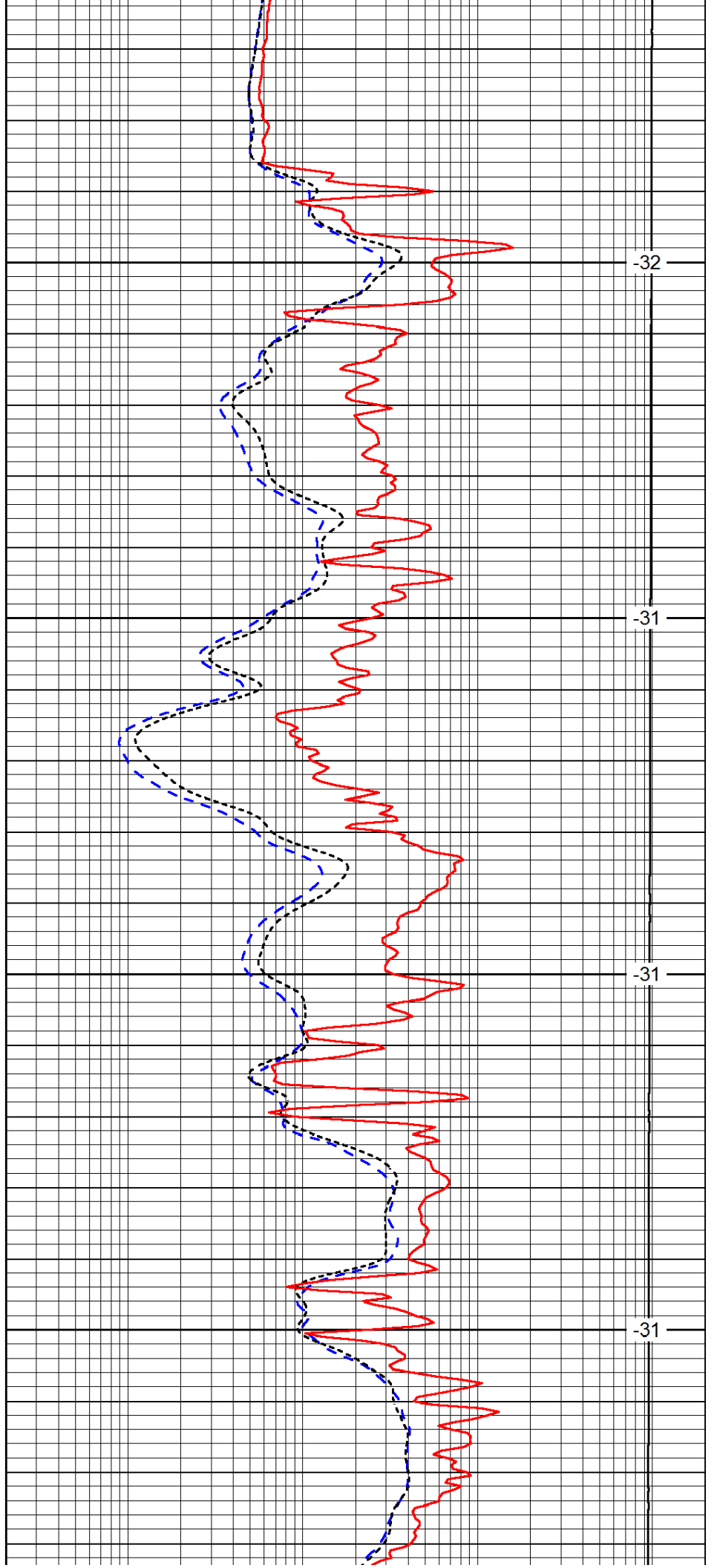


2400

2450

2500

2550

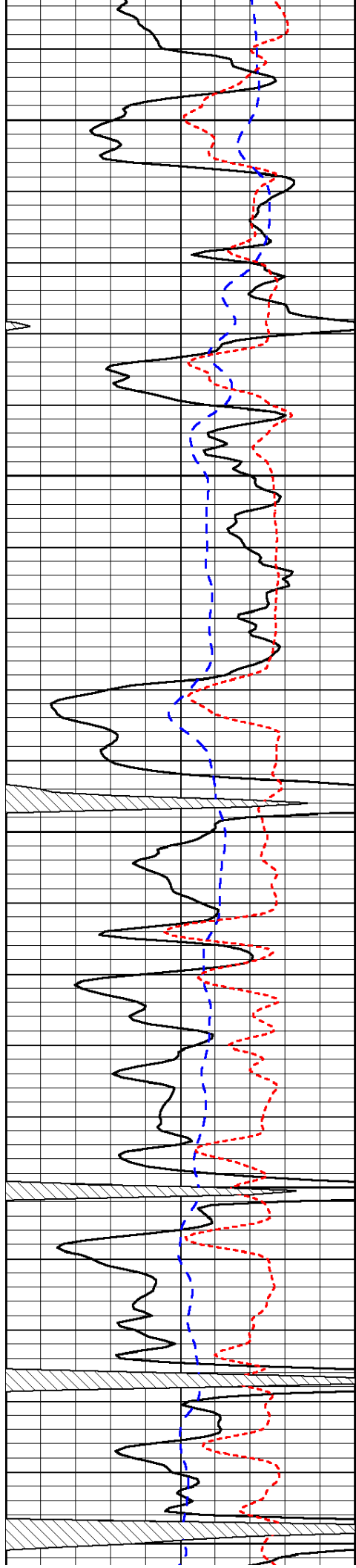


-32

-31

-31

-31



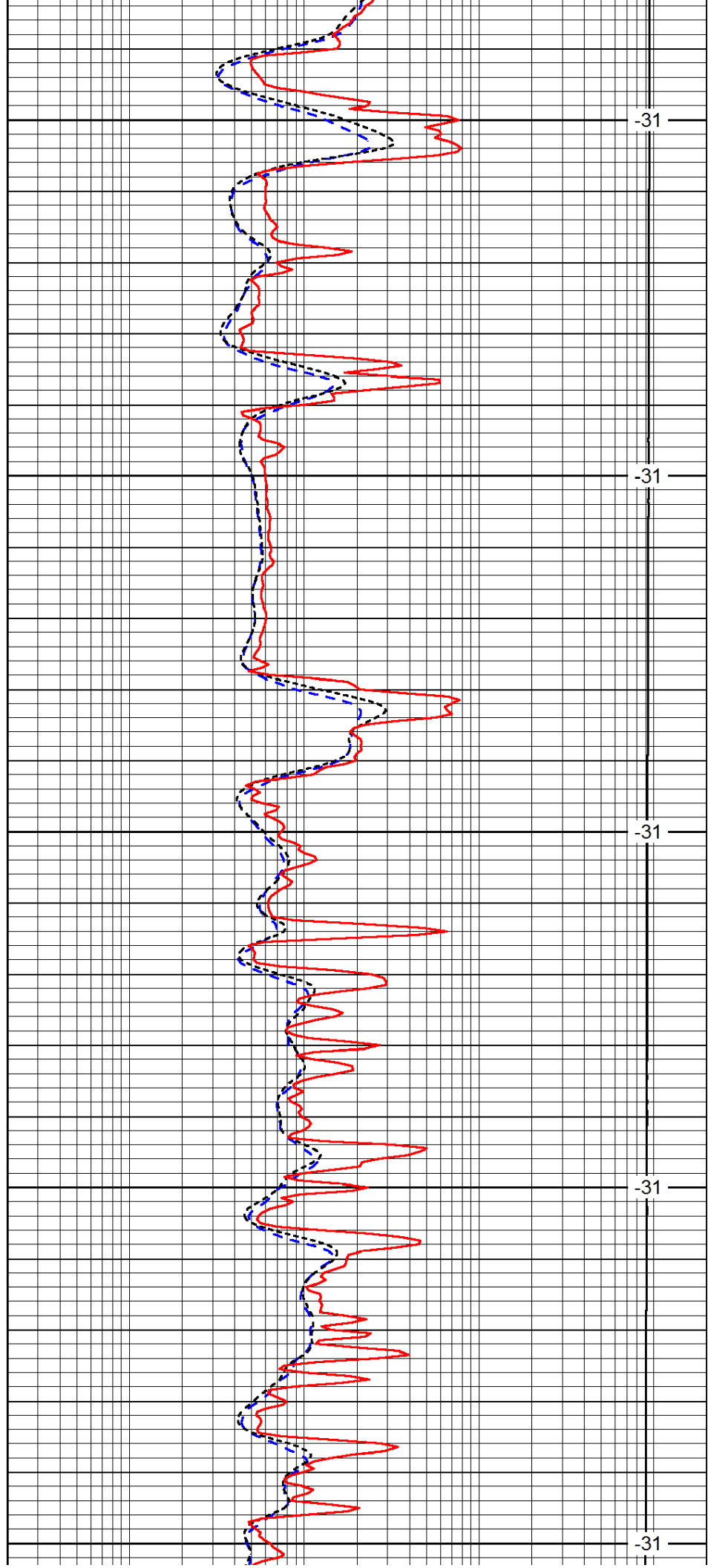
2600

2650

2700

2750

2800



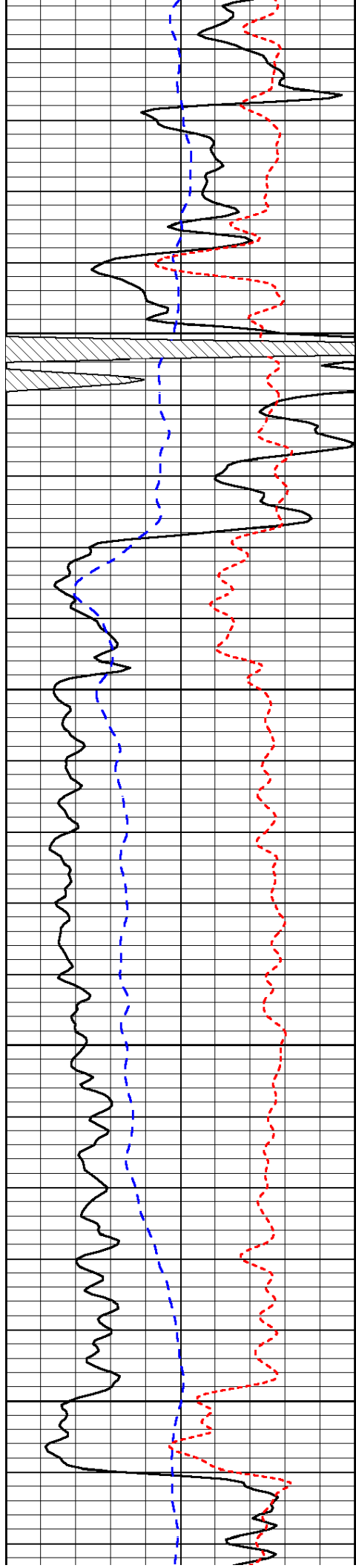
-31

-31

-31

-31

-31

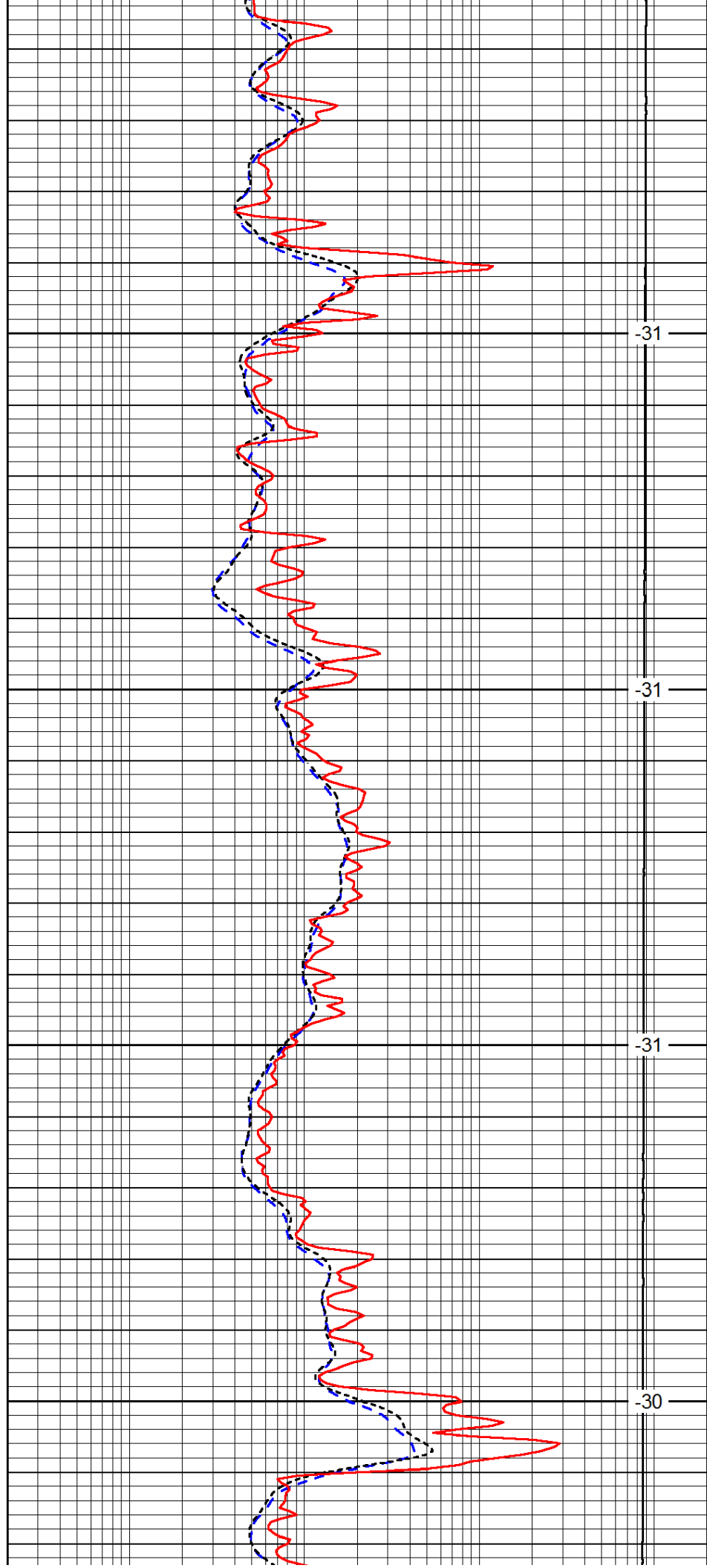


2850

2900

2950

3000

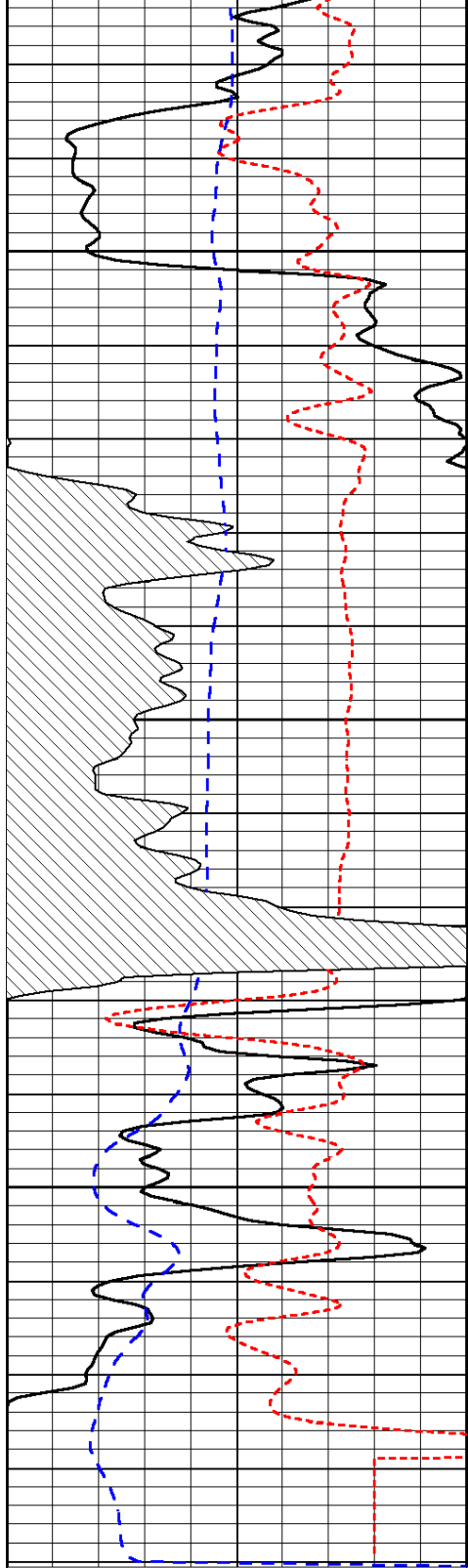


-31

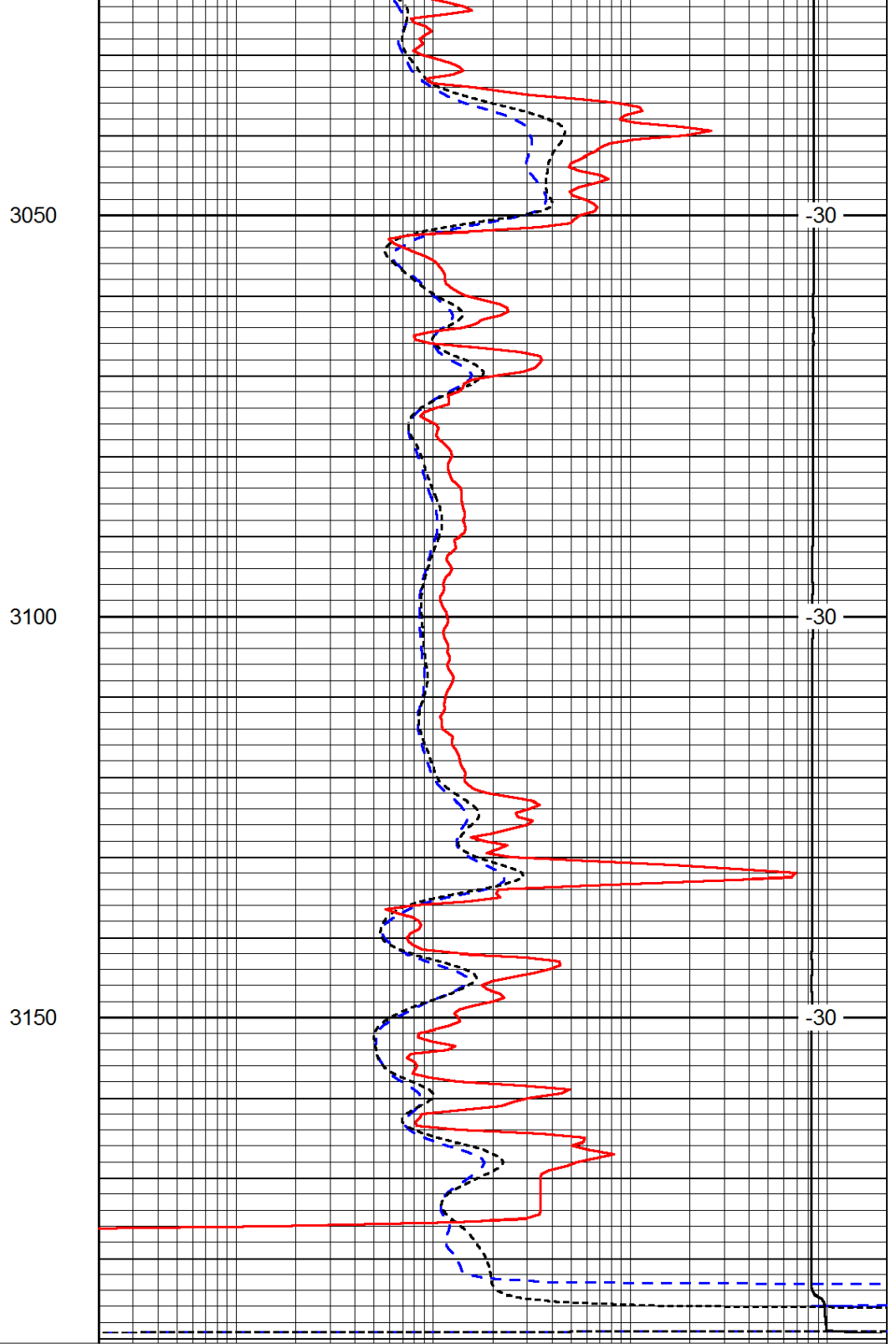
-31

-31

-30



0	Gamma Ray	150
-200	SP (mV)	0
-160	Rxo / Rt	40



0.2	Deep Resistivity	2000
0.2	Medium Resistivity	2000
0.2	Shallow Resistivity	2000
15000	Line Tension	0

LSPD