



**SUPERIOR**  
Hays,  
Kansas

**COMPENSATED  
NEUTRON / DENSITY  
LOG**

Company BAIRD OIL COMPANY, LLC.  
Well ESSLINGER RANCH, INC. #2-26  
Field  
County NORTON  
State KANSAS

Company BAIRD OIL COMPANY, LLC.  
Well ESSLINGER RANCH, INC. #2-26  
Field  
County NORTON State KANSAS

Location: API # : 15-137-20603-0000  
2265' FSL & 330' FEL

Other Services  
DIL/MEL

SEC 26 TWP 3S RGE 22W

Permanent Datum GROUND LEVEL Elevation 2304  
Log Measured From KELLY BUSHING 5' A.G.L.  
Drilling Measured From KELLY BUSHING

Elevation  
K.B. 2309  
D.F. 2307  
G.L. 2304

Date	4/24/12		
Run Number	ONE		
Depth Driller	3860		
Depth Logger	3863		
Bottom Logged Interval	3839		
Top Log Interval	3200		
Casing Driller	8 5/8" @ 213		
Casing Logger	213		
Bit Size	7 7/8		
Type Fluid in Hole	CHEMICAL MUD	CHLORIDES 2000 PPM	
Density / Viscosity	9.2/56		
pH / Fluid Loss	11.0/6.4		
Source of Sample	FLOWLINE		
Rim @ Meas. Temp	1.2 @ 82F		
Rmf @ Meas. Temp	.90 @ 82F		
Rmc @ Meas. Temp	1.4 @ 82F		
Source of Rmf / Rmc	MEASURED		
Rim @ BHT	.86 @ 114F		
Time Circulation Stopped	2 HOURS		
Time Logger on Bottom			
Maximum Recorded Temperature	114F		
Equipment Number	680		
Location	HAYS, KS.		
Recorded By	JASON CAPPELLUCCI		
Witnessed By	RICHARD BELL		

<<< Fold Here >>>

All interpretations are opinions based on inferences from electrical or other measurements and we cannot and do not guarantee the accuracy or correctness of any interpretation, and we shall not, except in the case of gross or willful negligence on our part, be liable or responsible for any loss, costs, damages, or expenses incurred or sustained by anyone resulting from any interpretation made by any of our officers, agents or employees. These interpretations are also subject to our general terms and conditions set out in our current Price Schedule.

**Comments**

THANK YOU FOR USING SUPERIOR WELL SERVICE (785) 628-6395  
DIRECTIONS  
EDMOND, KS. - 3 E. TO RD E7 - 7 N. TO RD. R - 1/4 MORE N. - W. INTO

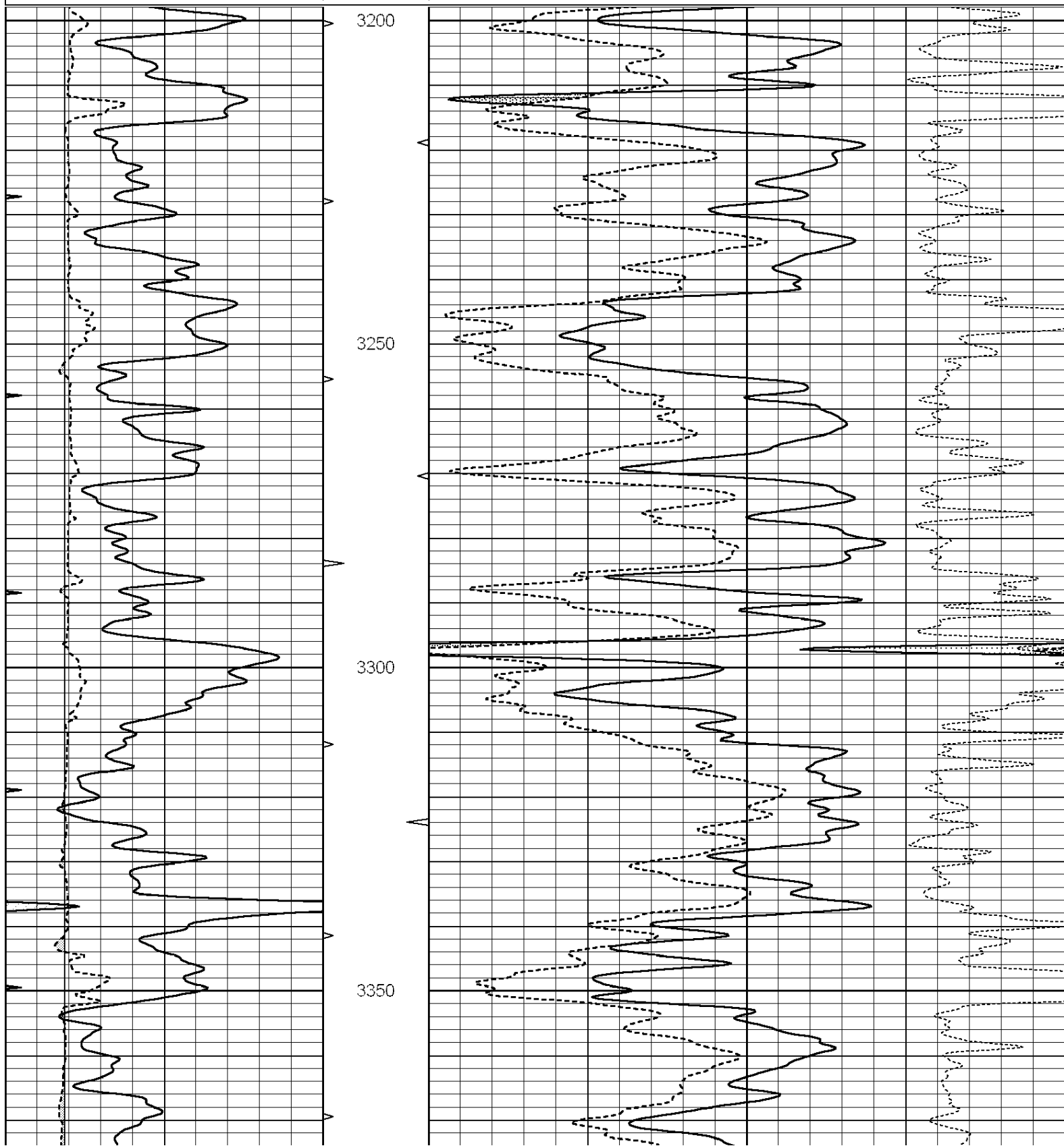


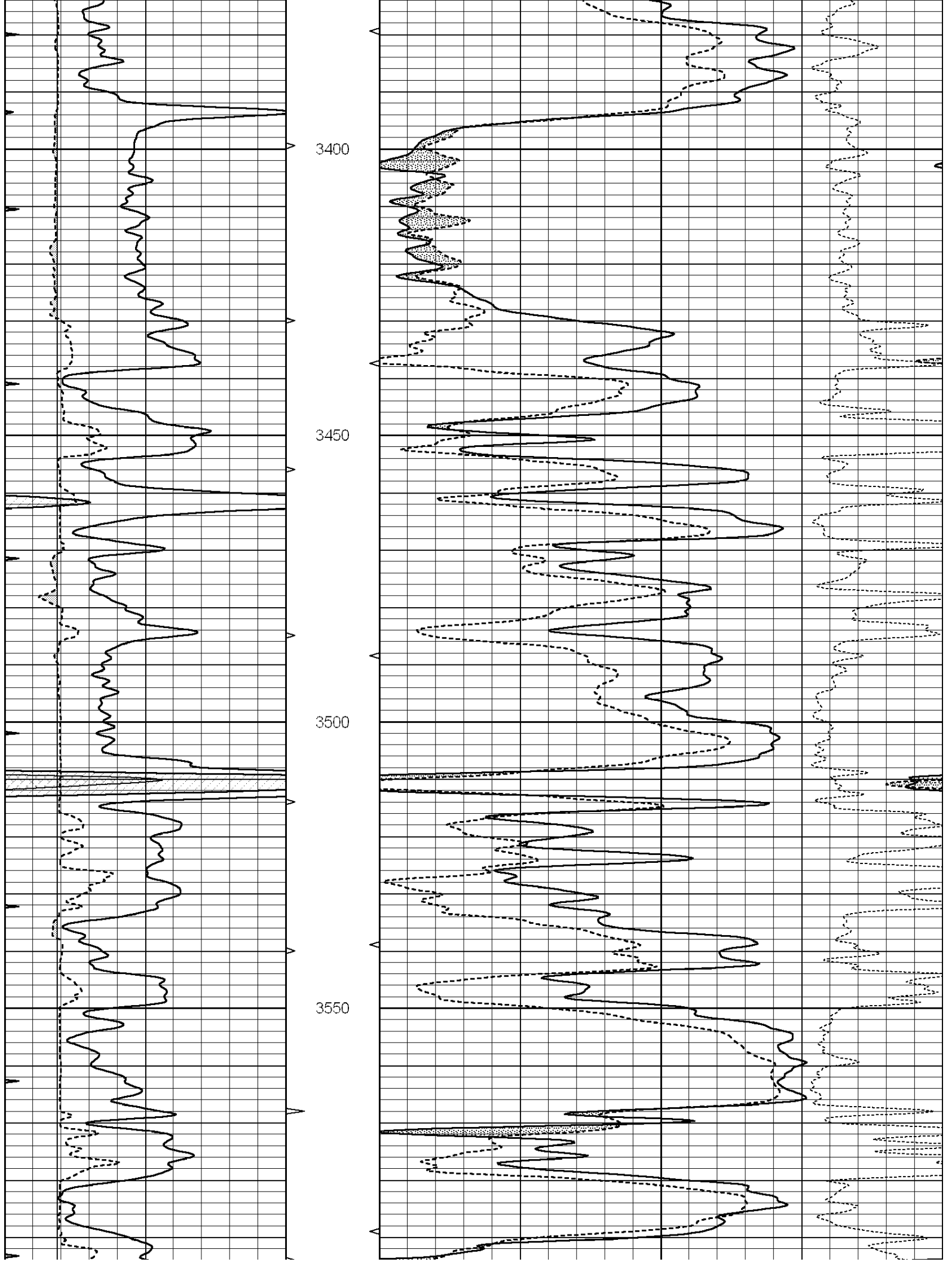
**SUPERIOR**  
Hays,  
Kansas

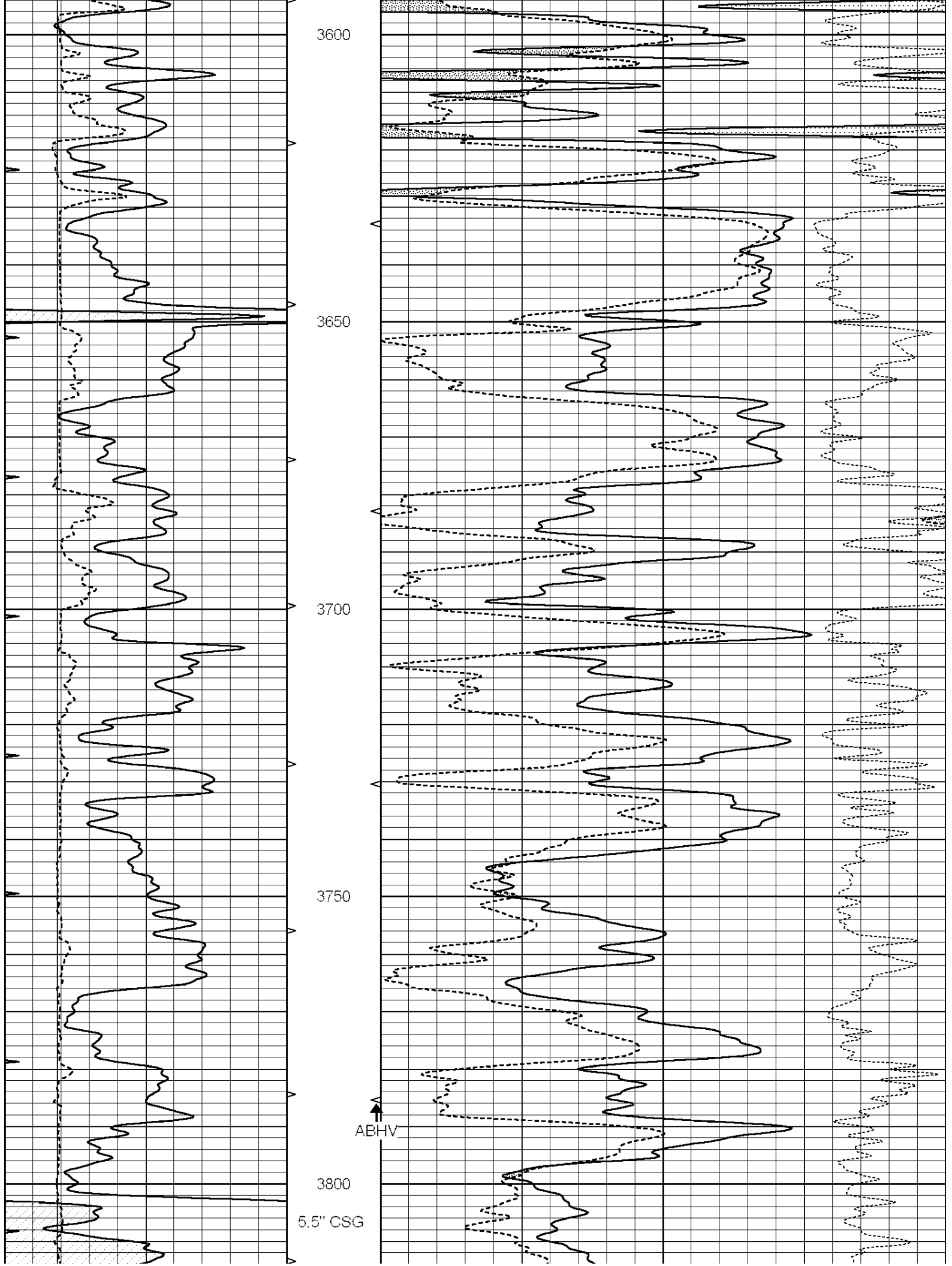
**MAIN SECTION**

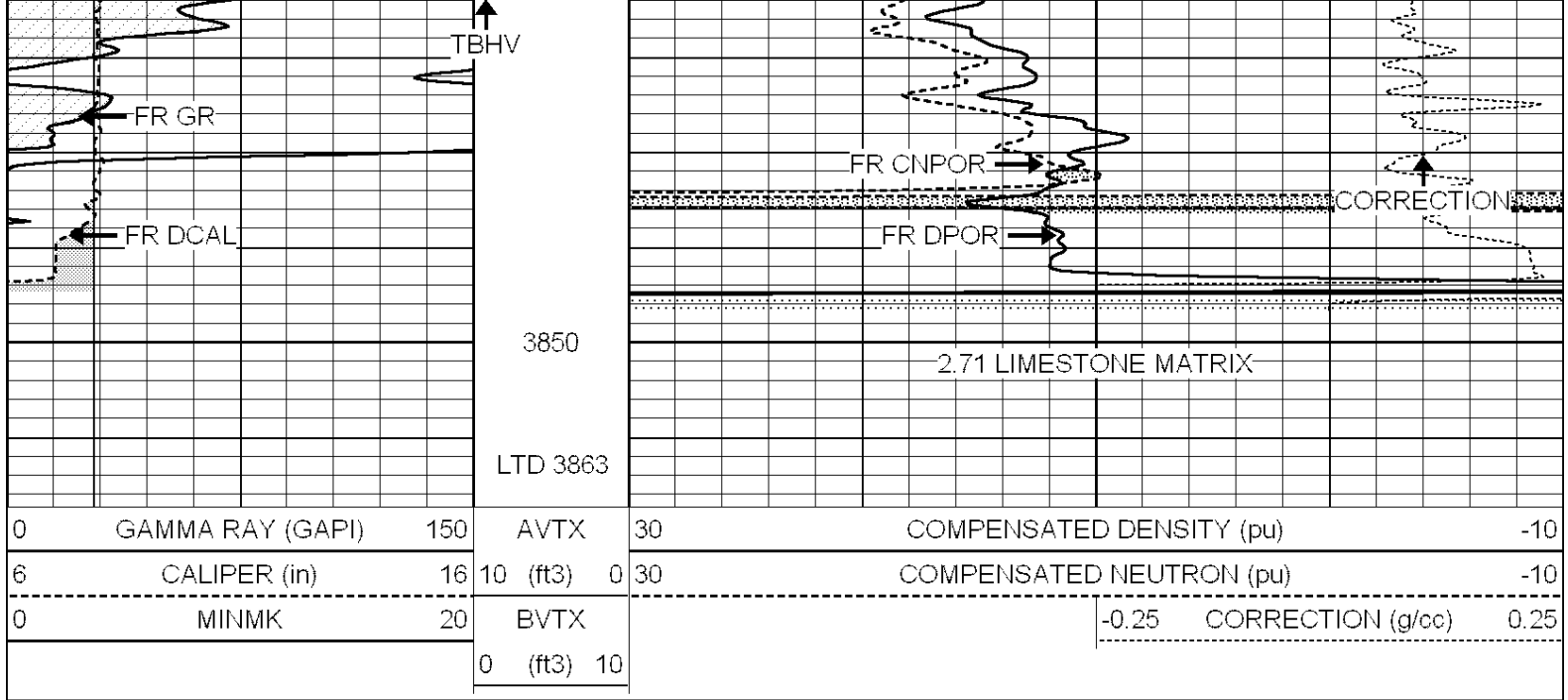
Database File: 008848ddn.db  
 Dataset Pathname: pass3.1  
 Presentation Format: \_den\_neu  
 Dataset Creation: Tue Apr 24 11:44:46 2012 by Calc Open-Cased 090629  
 Charted by: Depth in Feet scaled 1:240

0	GAMMA RAY (GAPI)	150	AVTX	30	COMPENSATED DENSITY (pu)	-10
6	CALIPER (in)	16	10 (ft3)	0 30	COMPENSATED NEUTRON (pu)	-10
0	MINMK	20	BVTX		-0.25 CORRECTION (g/cc)	0.25
			0 (ft3)	10		







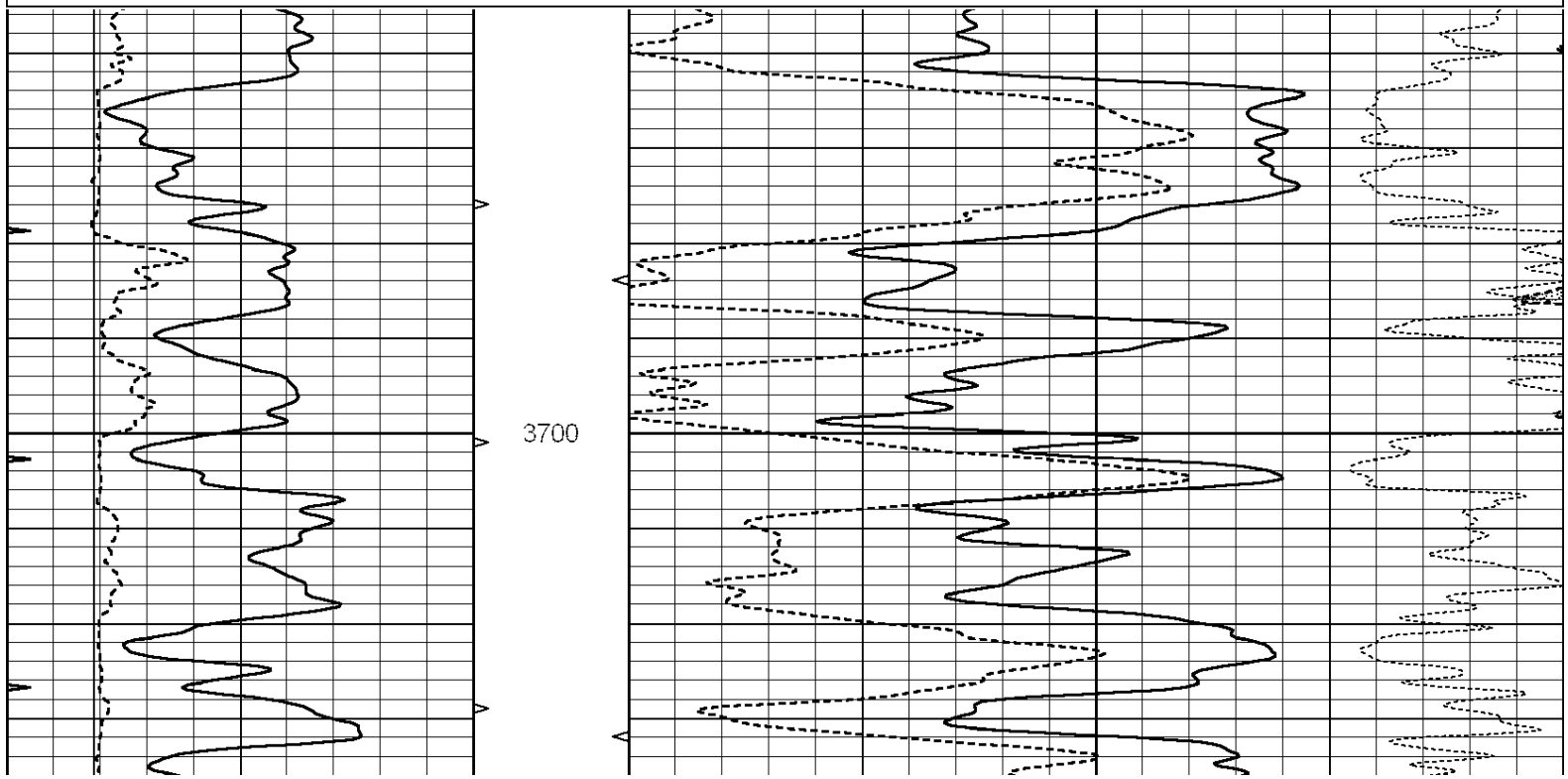


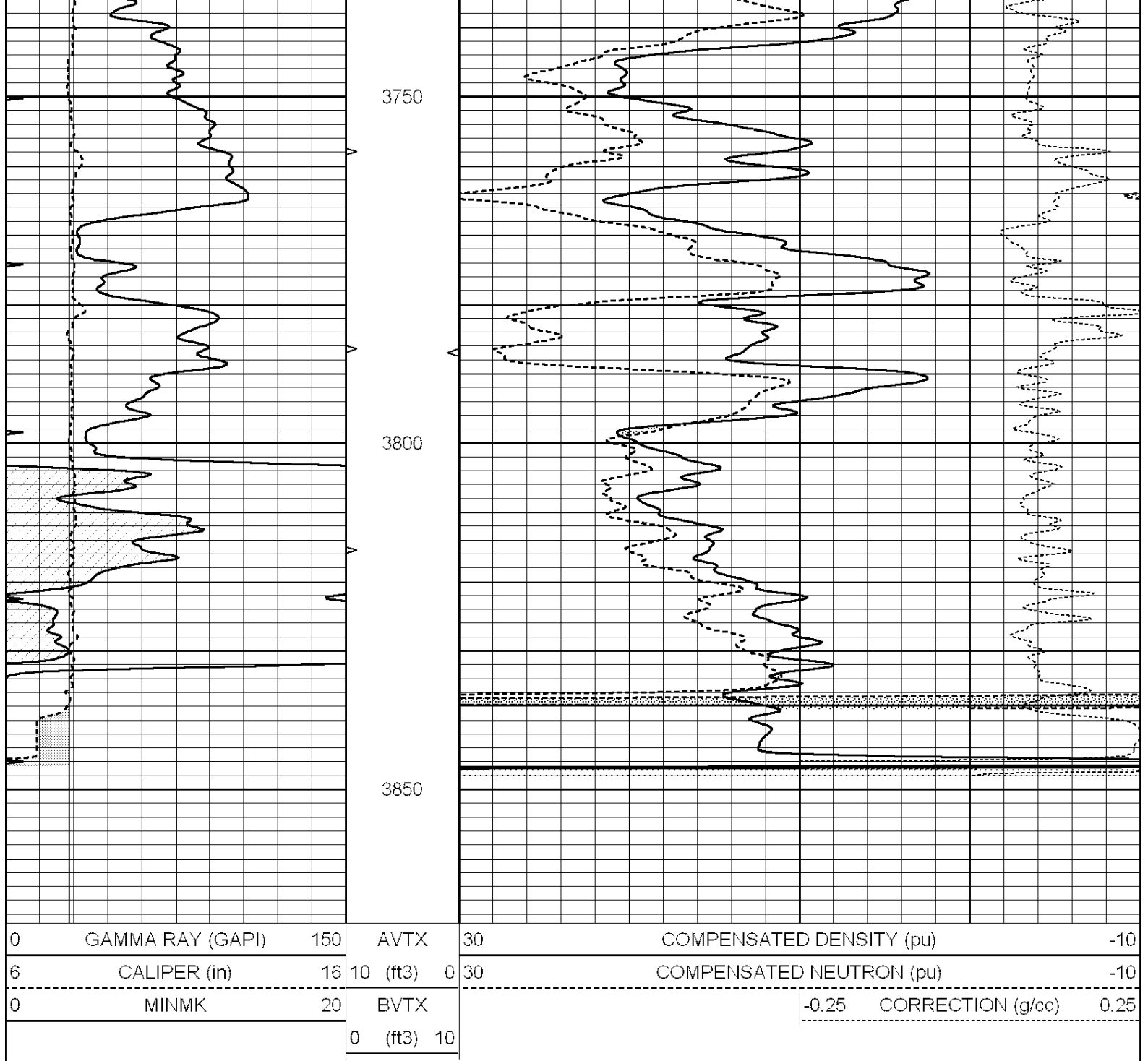
SUPERIOR  
Hays,  
Kansas

# REPEAT SECTION

Database File: 008848ddn.db  
 Dataset Pathname: pass2.1  
 Presentation Format: \_den\_neu  
 Dataset Creation: Tue Apr 24 11:38:21 2012 by Calc Open-Cased 090629  
 Charted by: Depth in Feet scaled 1:240

0	GAMMA RAY (GAPI)	150	AVTX	30	COMPENSATED DENSITY (pu)	-10
6	CALIPER (in)	16	10 (ft3)	0 30	COMPENSATED NEUTRON (pu)	-10
0	MINMK	20	BVTX		-0.25 CORRECTION (g/cc)	0.25
			0 (ft3)	10		





### Calibration Report

Database File: 008848ddn.db  
 Dataset Pathname: pass2.1  
 Dataset Creation: Tue Apr 24 11:38:21 2012 by Calc Open-Cased 090629

### Dual Induction Calibration Report

Serial-Model: PROBE8-DILG  
 Surface Cal Performed: Fri Aug 01 06:33:19 2008  
 Downhole Cal Performed: Mon Jul 28 11:08:27 2008  
 After Survey Verification Performed: Mon Jul 28 11:08:27 2008

#### Surface Calibration

Loop:	Readings		V	References			Results	
	Air	Loop		Air	Loop		m	b
Deep	0.015	0.648	V	0.000	400.000	mmho/m	632.616	-9.730
Medium	0.029	0.796	V	0.000	464.000	mmho/m	605.049	-17.680

Internal:	Zero	Cal		Zero	Cal		m	b
Deep	0.017	0.657	V	0.000	400.000	mmho/m	625.153	-10.619
Medium	0.016	0.757	V	0.000	464.000	mmho/m	625.992	-9.739

Downhole Calibration								
	Readings			References			Results	
	Zero	Cal		Zero	Cal		m'	b'
Deep	0.000	0.000	mmho/m	2.011	405.777	mmho/m	1.000	0.000
Medium	0.000	0.000	mmho/m	7.590	503.393	mmho/m	1.000	0.000
LL3		7.500	V		1500.000	Ohm-m		
		0.000	V		20.000	Ohm-m		
		-7.200	V		3800.000	mmho-m		

After Survey Verification								
	Readings			Targets			Results	
	Zero	Cal		Zero	Cal		m'	b'
Deep	0.000	0.000	mmho/m	0.000	0.000	mmho/m	0.000	0.000
Medium	0.000	0.000	mmho/m	0.000	0.000	mmho/m	0.000	0.000
LL3		1.000	Ohm-m		1.000	Ohm-m		
		0.000	Ohm-m		0.000	Ohm-m		
		1.000	mmho-m		1.000	mmho-m		

Compensated Density Calibration Report

Serial-Model:	GEAR4-GEARHART
Source / Verifier:	143 / 143
Master Calibration Performed:	Mon Mar 19 19:07:19 2012

Master Calibration						
	Density		Far Detector	Near Detector		
Magnesium	1.710	g/cc	1015.91	497.51	cps	
Aluminum	2.600	g/cc	227.67	350.20	cps	
	Spine Angle = 76.79		Density/Spine Ratio = 0.579			
	Size		Reading			
Small Ring	8.00	in	2.25	V		
Large Ring	14.00	in	4.37	V		

Compensated Neutron Calibration Report

Serial Number:	6I
Tool Model:	G

CALIBRATION						
Detector	Readings		Target		Normalization	
Short Space	1.00	cps	1.00	cps	1.0000	
Long Space	1.00	cps	1.00	cps	1.0000	

Gamma Ray Calibration Report

Serial Number:	#8
Tool Model:	OPEN
Performed:	Mon Jun 13 16:56:43 2011
Calibrator Value:	150.0 GAPI
Background Reading:	0.0 cps

Calibrator Reading: 175.0 cps

Sensitivity: 0.8371 GAPI/cps