



SUPERIOR
Hays,
Kansas

**DUAL
INDUCTION
LOG**

Company BAIRD OIL COMPANY, LLC.
Well ESSLINGER RANCH, INC. #2-26
Field
County NORTON
State KANSAS

Company BAIRD OIL COMPANY, LLC.
Well ESSLINGER RANCH, INC. #2-26
Field
County NORTON State KANSAS

Location:

API # : 15-137-20603-0000
2265' FSL & 330' FEL

Other Services
CDL/CNL
MEL

SEC 26 TWP 3S RGE 22W

Permanent Datum GROUND LEVEL Elevation 2304
Log Measured From KELLY BUSHING 5' A.G.L.
Drilling Measured From KELLY BUSHING

Elevation
K.B. 2309
D.F. 2307
G.L. 2304

Date	4/24/12		
Run Number	ONE		
Depth Driller	3860		
Depth Logger	3863		
Bottom Logged Interval	3861		
Top Log Interval	3200	1950 - 2050	
Casing Driller	8 5/8" @ 213		
Casing Logger	213		
Bit Size	7 7/8		
Type Fluid in Hole	CHEMICAL MUD	CHLORIDES 2000 PPM	
Density / Viscosity	9.2/56		
pH / Fluid Loss	11.0/6.4		
Source of Sample	FLOWLINE		
Rin @ Meas. Temp	1.2 @ 82F		
Rmf @ Meas. Temp	.90 @ 82F		
Rmc @ Meas. Temp	1.4 @ 82F		
Source of Rmf / Rmc	MEASURED		
Rin @ BHT	.86 @ 114F		
Time Circulation Stopped	2 HOURS		
Time Logger on Bottom			
Maximum Recorded Temperature	114F		
Equipment Number	680		
Location	HAYS, KS.		
Recorded By	JASON CAPPELLUCCI		
Witnessed By	RICHARD BELL		

<<< Fold Here >>>

All interpretations are opinions based on inferences from electrical or other measurements and we cannot and do not guarantee the accuracy or correctness of any interpretation, and we shall not, except in the case of gross or willful negligence on our part, be liable or responsible for any loss, costs, damages, or expenses incurred or sustained by anyone resulting from any interpretation made by any of our officers, agents or employees. These interpretations are also subject to our general terms and conditions set out in our current Price Schedule.

Comments

THANK YOU FOR USING SUPERIOR WELL SERVICE (785) 628-6395
DIRECTIONS
EDMOND, KS. - 3 E. TO RD E7 - 7 N. TO RD. R - 1/4 MORE N. - W. INTO



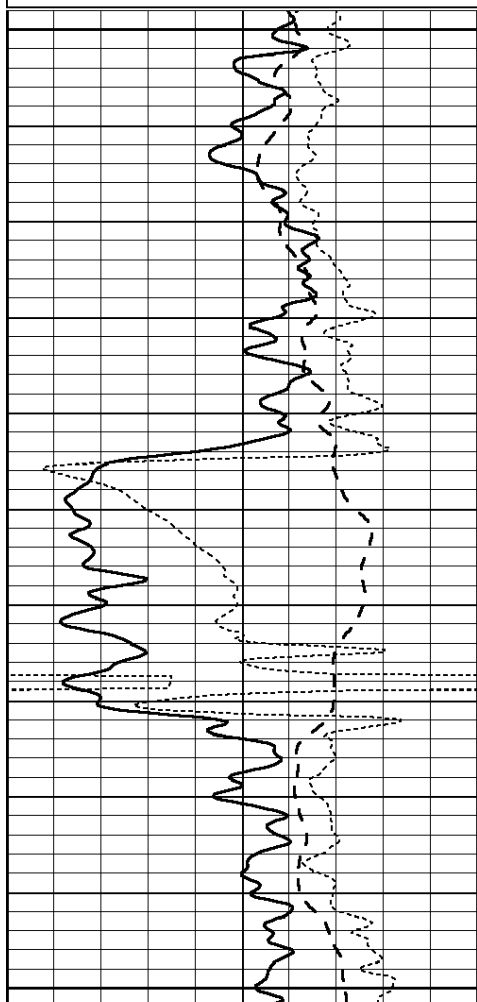
SUPERIOR
Hays,
Kansas

ANHYDRITE

Database File: 008848ddn.db
 Dataset Pathname: pass3.1.1
 Presentation Format: _dil
 Dataset Creation: Tue Apr 24 12:01:22 2012 by Calc Open-Cased 090629
 Charted by: Depth in Feet scaled 1:240

0	GAMMA RAY (GAPI)	150
-100	SP (mV)	100
-250	Rxo/Rt	50

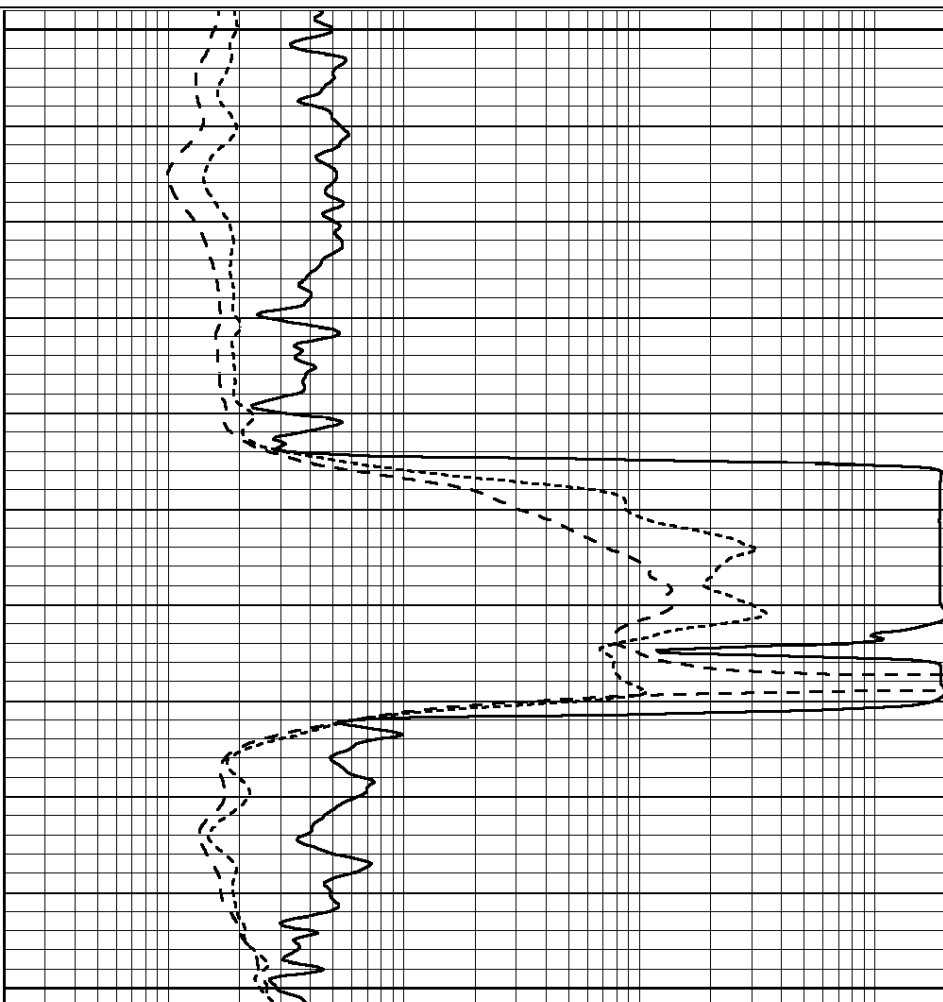
0.2	SHALLOW GUARD (Ohm-m)	2000
0.2	MEDIUM INDUCTION (Ohm-m)	2000
0.2	DEEP INDUCTION (Ohm-m)	2000



1950

2000

2050



0	GAMMA RAY (GAPI)	150
-100	SP (mV)	100
-250	Rxo/Rt	50

0.2	SHALLOW GUARD (Ohm-m)	2000
0.2	MEDIUM INDUCTION (Ohm-m)	2000
0.2	DEEP INDUCTION (Ohm-m)	2000



SUPERIOR
 Hays,
 Kansas

MAIN SECTION

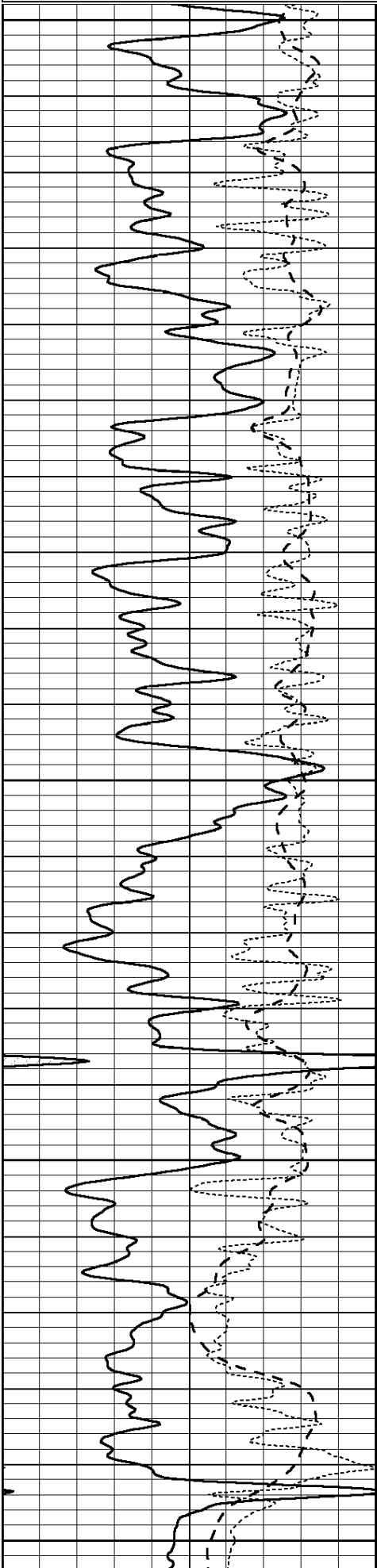
Database File: 008848ddn.db
 Dataset Pathname: pass3.1
 Presentation Format: _dil
 Dataset Creation: Tue Apr 24 11:44:46 2012 by Calc Open-Cased 090629
 Charted by: Depth in Feet scaled 1:240

0	GAMMA RAY (GAPI)	150
-100	SP (mV)	100

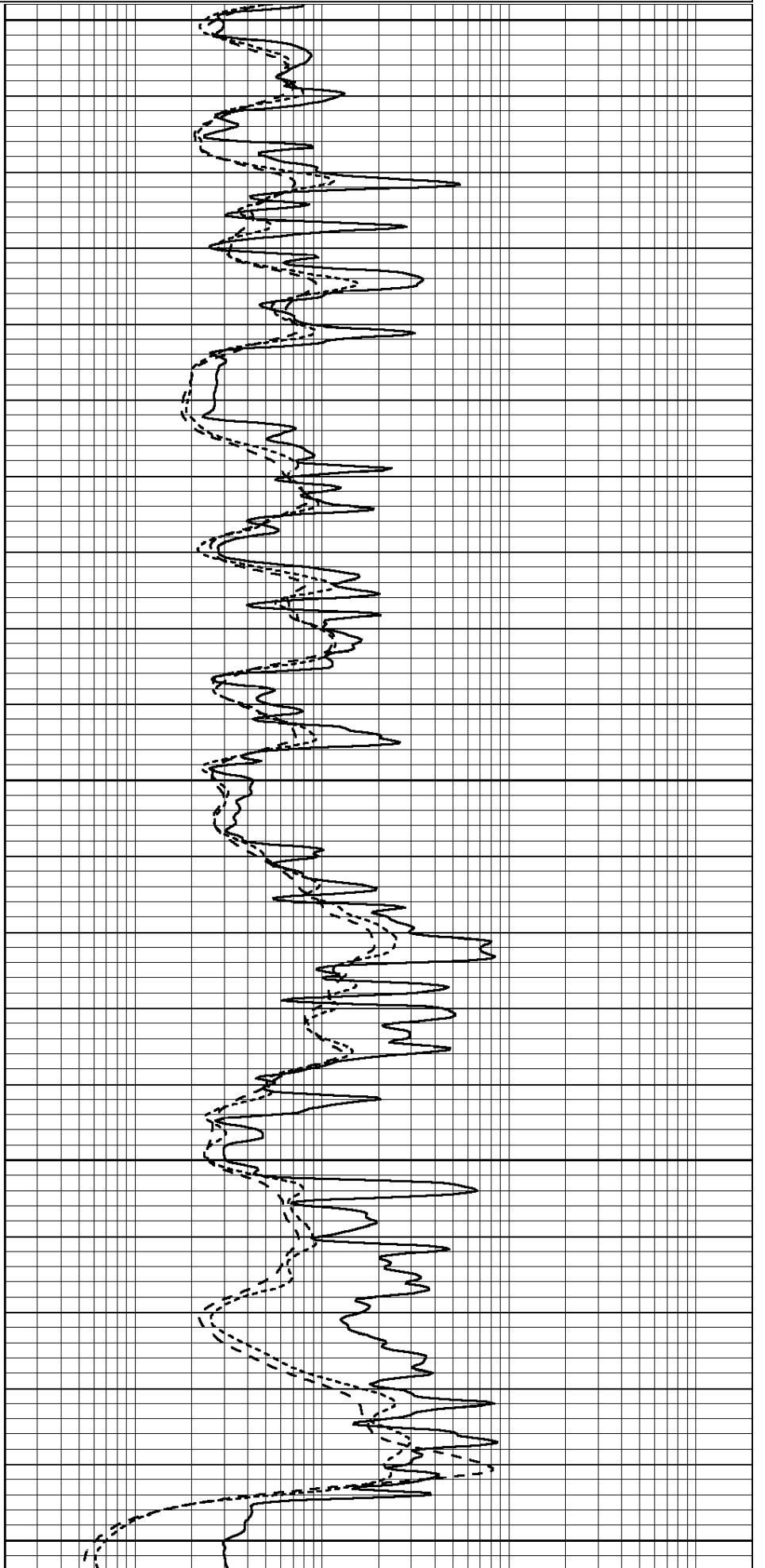
0.2	SHALLOW GUARD (Ohm-m)	2000
0.2	MEDIUM INDUCTION (Ohm-m)	2000

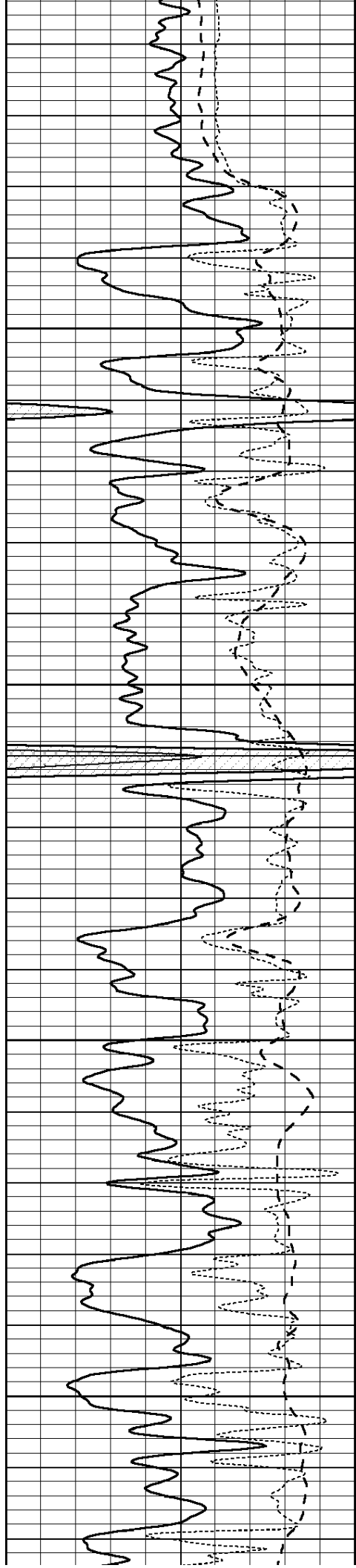
-100 SP (mv) 100
-250 Rxo/Rt 50

0.2 MEDIUM INDUCTION (Ohm-m) 2000
0.2 DEEP INDUCTION (Ohm-m) 2000



3200
3250
3300
3350
3400



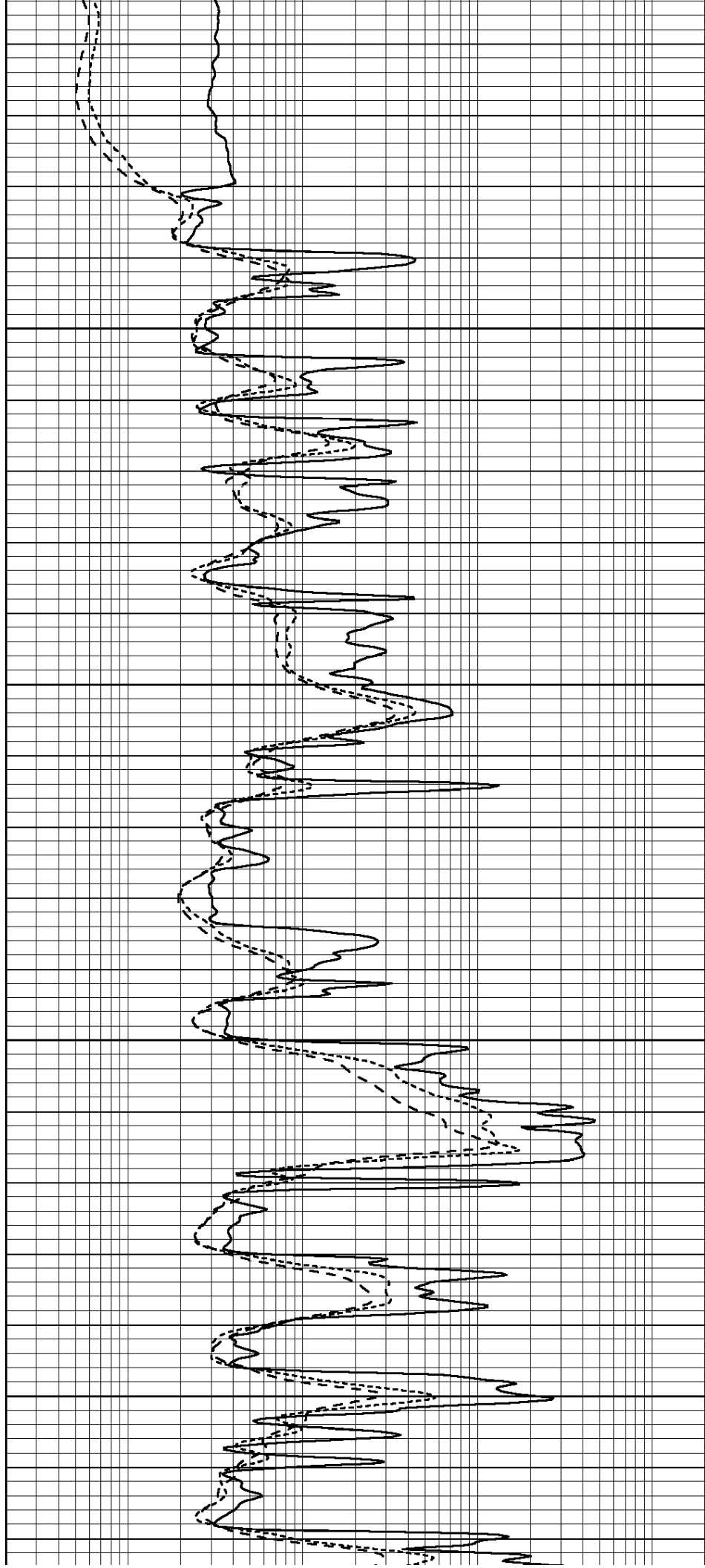


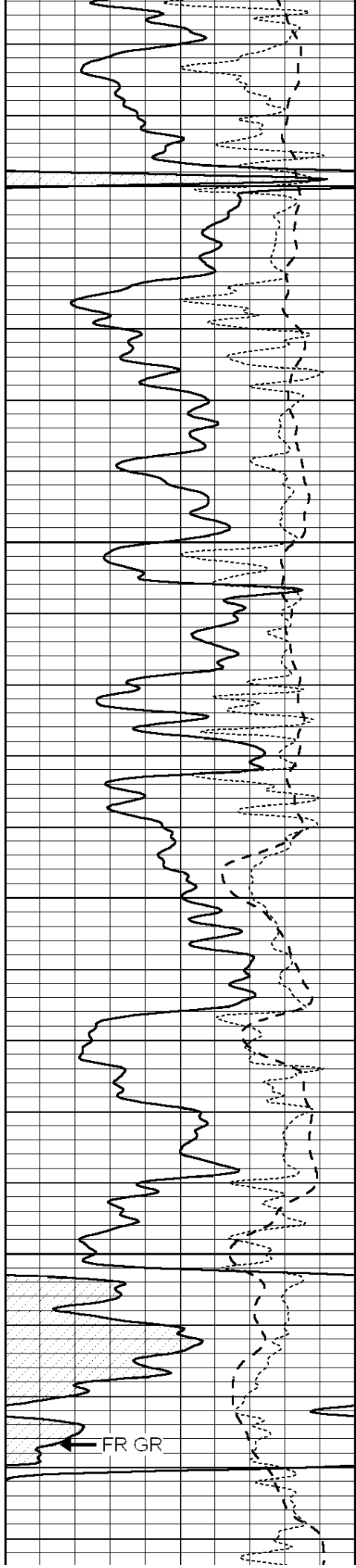
3450

3500

3550

3600



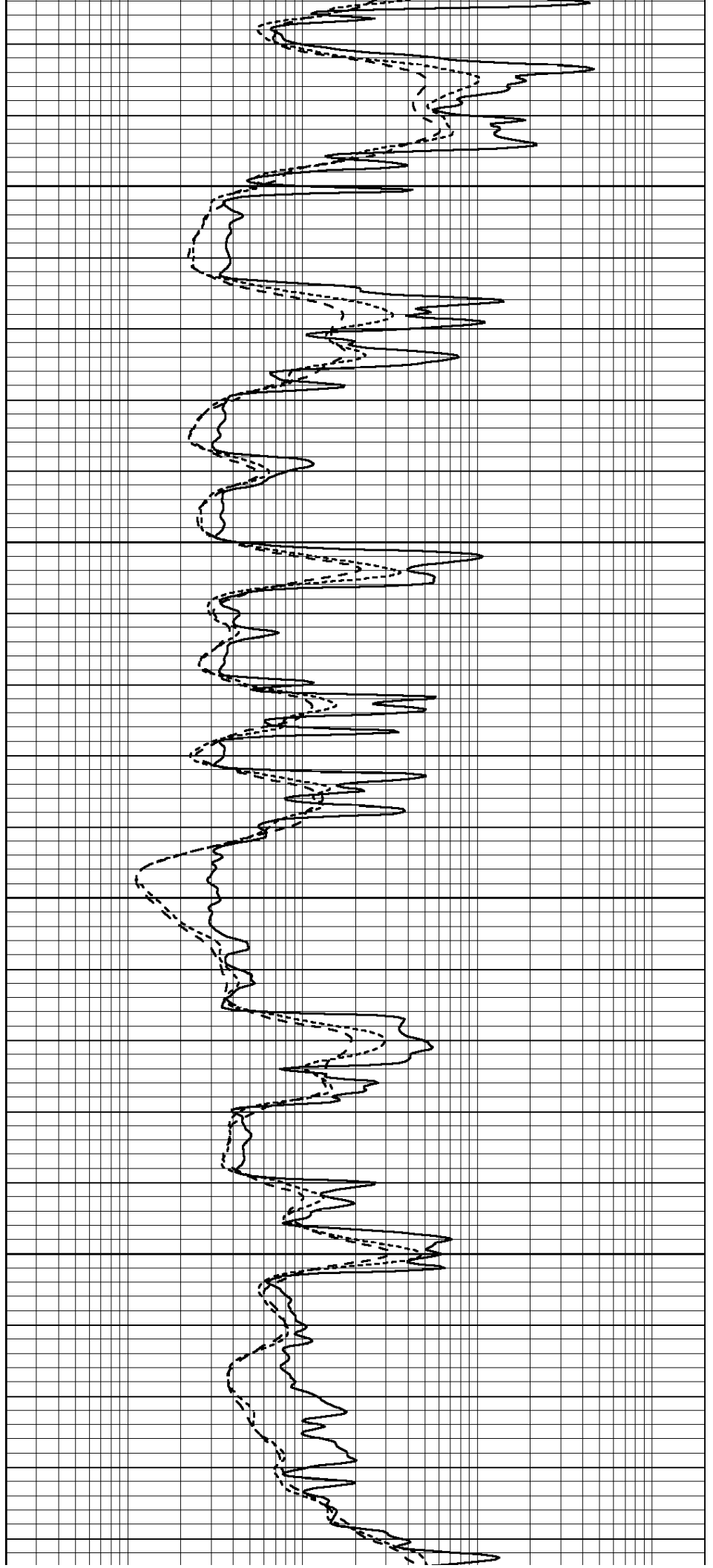


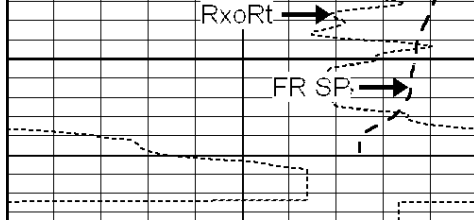
3650

3700

3750

3800





3850

LTD 3863

0	GAMMA RAY (GAPI)	150
-100	SP (mV)	100
-250	Rxo/Rt	50



FR RILD

FR RILM

FR RLL3

0.2	SHALLOW GUARD (Ohm-m)	2000
0.2	MEDIUM INDUCTION (Ohm-m)	2000
0.2	DEEP INDUCTION (Ohm-m)	2000



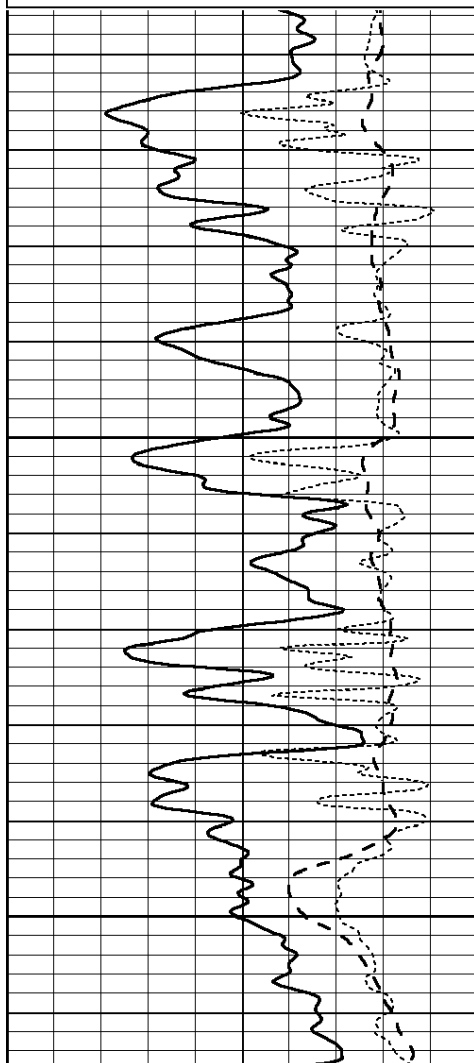
SUPERIOR
Hays,
Kansas

REPEAT SECTION

Database File: 008848ddn.db
 Dataset Pathname: pass2.1
 Presentation Format: _dil
 Dataset Creation: Tue Apr 24 11:38:21 2012 by Calc Open-Cased 090629
 Charted by: Depth in Feet scaled 1:240

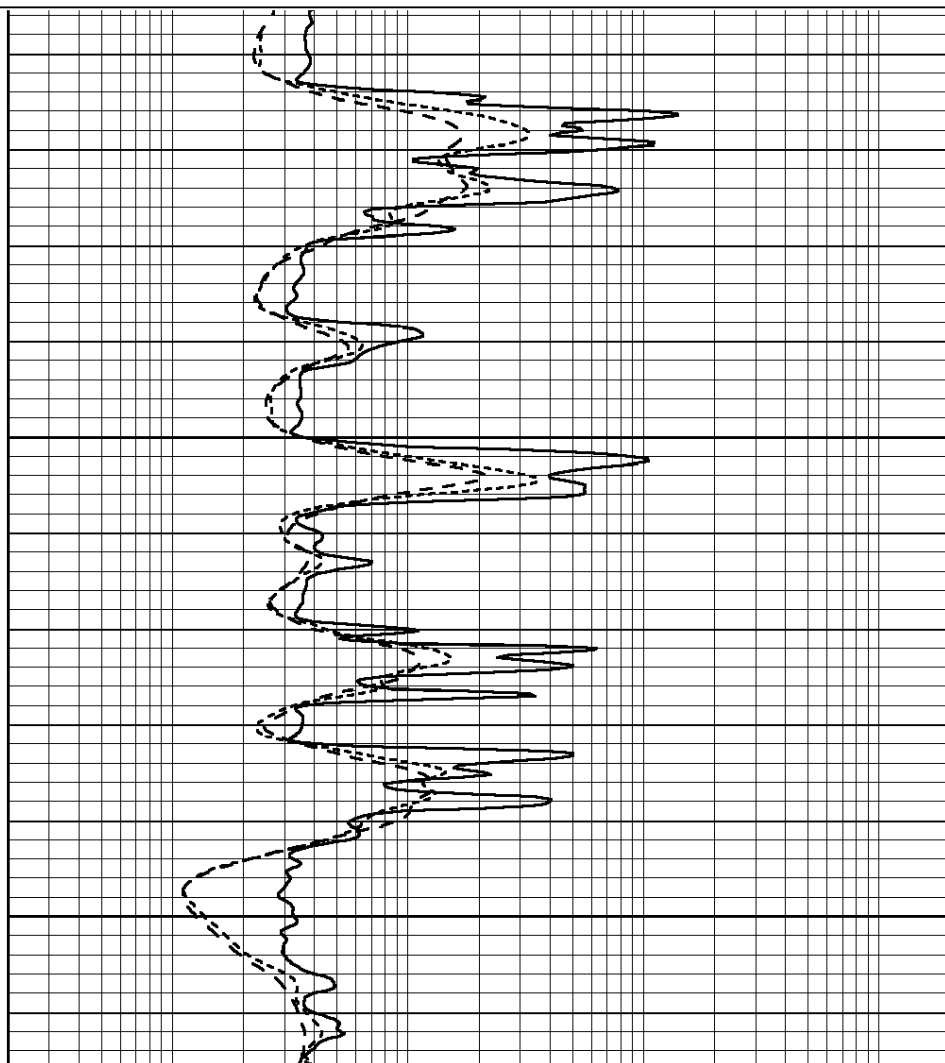
0	GAMMA RAY (GAPI)	150
-100	SP (mV)	100
-250	Rxo/Rt	50

0.2	SHALLOW GUARD (Ohm-m)	2000
0.2	MEDIUM INDUCTION (Ohm-m)	2000
0.2	DEEP INDUCTION (Ohm-m)	2000



3700

3750



	Zero	Cal		Zero	Cal		m'	b'
Deep	0.000	0.000	mmho/m	2.011	405.777	mmho/m	1.000	0.000
Medium	0.000	0.000	mmho/m	7.590	503.393	mmho/m	1.000	0.000
LL3		7.500	V		1500.000	Ohm-m		
		0.000	V		20.000	Ohm-m		
		-7.200	V		3800.000	mmho-m		

After Survey Verification								
	Readings			Targets			Results	
	Zero	Cal		Zero	Cal		m'	b'
Deep	0.000	0.000	mmho/m	0.000	0.000	mmho/m	0.000	0.000
Medium	0.000	0.000	mmho/m	0.000	0.000	mmho/m	0.000	0.000
LL3		1.000	Ohm-m		1.000	Ohm-m		
		0.000	Ohm-m		0.000	Ohm-m		
		1.000	mmho-m		1.000	mmho-m		

Compensated Density Calibration Report

Serial-Model:	GEAR4-GEARHART
Source / Verifier:	143 / 143
Master Calibration Performed:	Mon Mar 19 19:07:19 2012

Master Calibration						
	Density		Far Detector	Near Detector		
Magnesium	1.710	g/cc	1015.91	497.51	cps	
Aluminum	2.600	g/cc	227.67	350.20	cps	
	Spine Angle = 76.79		Density/Spine Ratio = 0.579			
	Size		Reading			
Small Ring	8.00	in	2.25	V		
Large Ring	14.00	in	4.37	V		

Compensated Neutron Calibration Report

Serial Number:	6I
Tool Model:	G

CALIBRATION						
Detector	Readings		Target		Normalization	
Short Space	1.00	cps	1.00	cps	1.0000	
Long Space	1.00	cps	1.00	cps	1.0000	

Gamma Ray Calibration Report

Serial Number:	#8	
Tool Model:	OPEN	
Performed:	Mon Jun 13 16:56:43 2011	
Calibrator Value:	150.0	GAPI
Background Reading:	0.0	cps
Calibrator Reading:	175.0	cps
Sensitivity:	0.8371	GAPI/cps