



SUPERIOR
Hays,
Kansas

SONIC
LOG

Company MULL DRILLING COMPANY, INC.
Well #1-20 SIMPSON-MAST UNIT
Field WILDCAT
County NESS
State KANSAS

Company MULL DRILLING COMPANY, INC.
Well #1-20 SIMPSON-MAST UNIT
Field WILDCAT
County NESS
State KANSAS

Location: API #: 15-135-25353-0000
80' FSL & 1193' FWL
SEC 20 TWP 16S RGE 23W
Permanent Datum GROUND LEVEL Elevation 2502
Log Measured From KELLY BUSHING 5' A.G.L.
Drilling Measured From KELLY BUSHING
Other Services
CDL/CNL/PE
DIL/SONIC
Elevation
K.B. 2507
D.F. 2505
G.L. 2502

Date	3/7/12
Run Number	TWO
Depth Driller	4600
Depth Logger	4598
Bottom Logged Interval	4588
Top Log Interval	200
Casing Driller	8 5/8"@233'
Casing Logger	233
Bit Size	7 7/8"
Type Fluid in Hole	CHEMICAL MUD
Density / Viscosity	8.6/54
pH / Fluid Loss	8.5/6.8
Source of Sample	FLOWLINE
Rm @ Meas. Temp	1.10@50F
Rmt @ Meas. Temp	.825@50F
Rmc @ Meas. Temp	1.32@50F
Source of Rmf / Rmc	MEASUREMENT
Rm @ BHT	.455@121F
Time Circulation Stopped	4 HOURS
Time Logger on Bottom	4:00 P.M.
Maximum Recorded Temperature	121F
Equipment Number	4010
Location	HAYS, KANSAS
Recorded By	JEFF LUEBBERS
Witnessed By	KEVIN KESSLER

<<< Fold Here >>>

All interpretations are opinions based on inferences from electrical or other measurements and we cannot and do not guarantee the accuracy or correctness of any interpretation, and we shall not, except in the case of gross or willful negligence on our part, be liable or responsible for any loss, costs, damages, or expenses incurred or sustained by anyone resulting from any interpretation made by any of our officers, agents or employees. These interpretations are also subject to our general terms and conditions set out in our current Price Schedule.

Comments

THANK YOU FOR USING SUPERIOR WELL SERVICE HAYS, KANSAS (785) 628-6395
DIRECTIONS
RANSOM, KS. (JUNCTION OF HWY 4 & 283) 1/4N., 1/4E., N. INTO

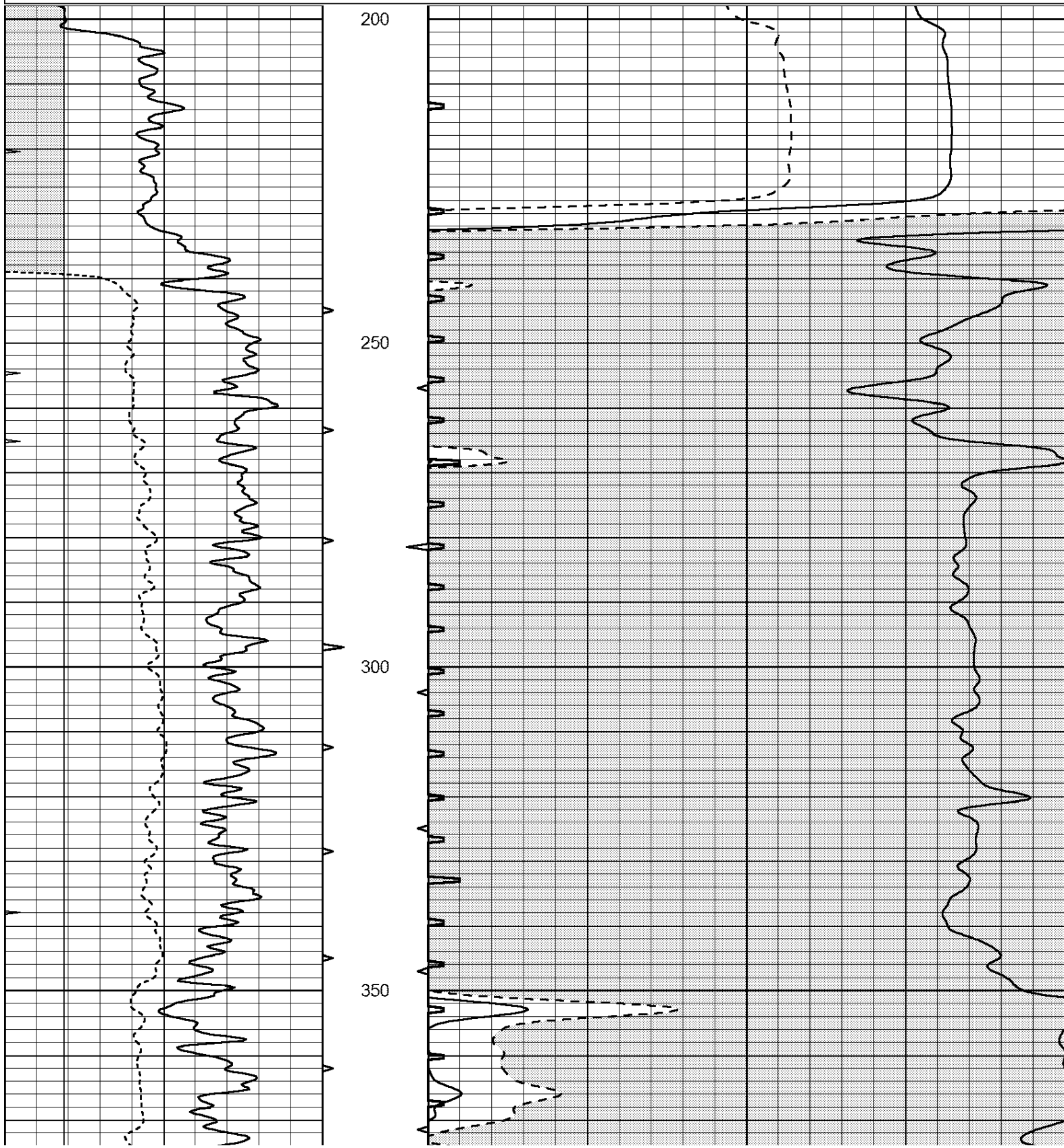


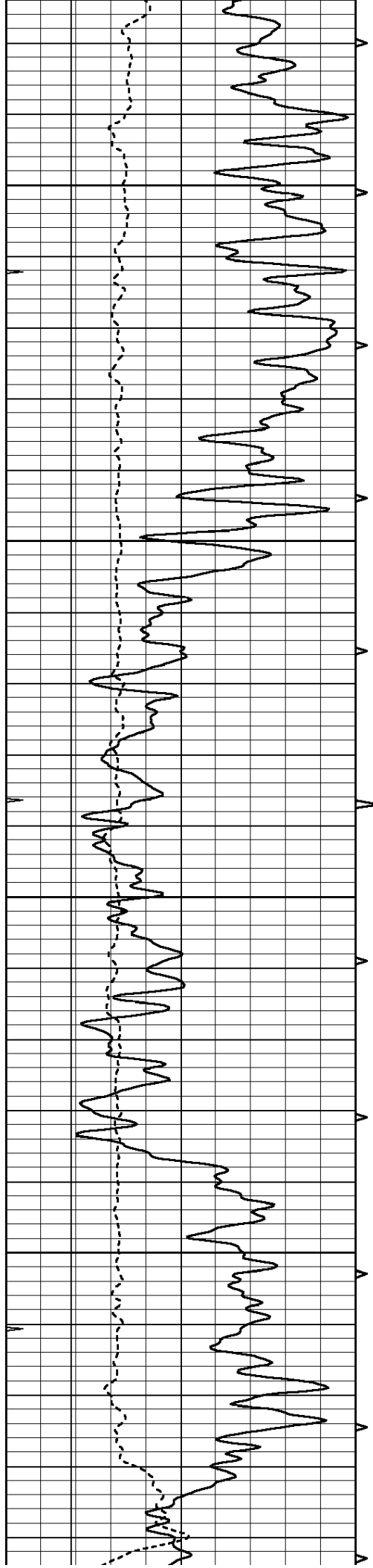
SUPERIOR
Hays,
Kansas

MAIN SECTION

Database File: 408425pe.db
 Dataset Pathname: pass6.6
 Presentation Format: slt
 Dataset Creation: Wed Mar 07 19:51:06 2012
 Charted by: Depth in Feet scaled 1:240

0	GAMMA RAY (GAPI)	150	ABHV	140	DELTA TIME (usec/ft)	40
6	CALIPER (in)	16	10 (ft3)	0	30	SONIC POROSITY (pu)
0	MINMK	20	TBHV	0	ITT (msec)	20
			0 (ft3)	10		



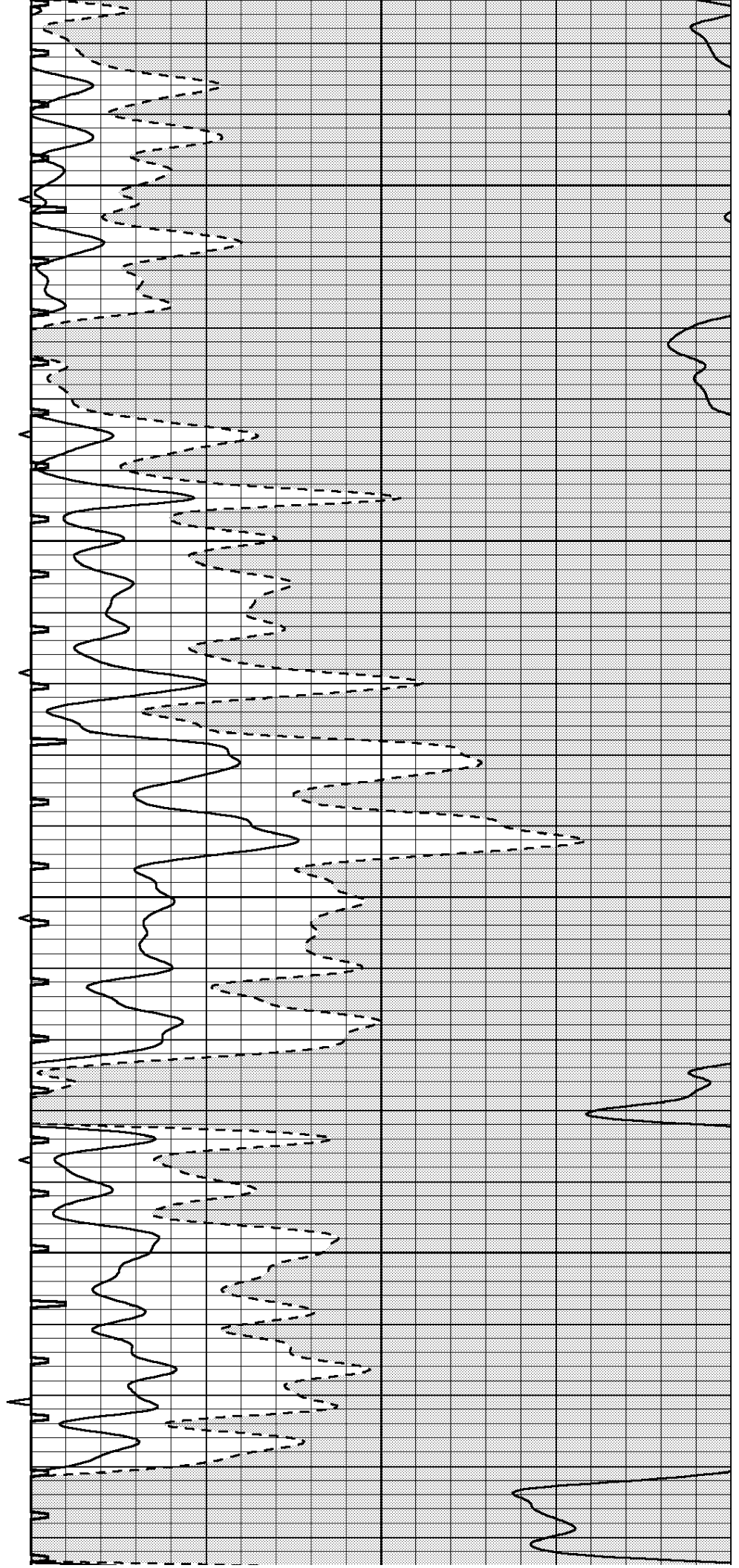


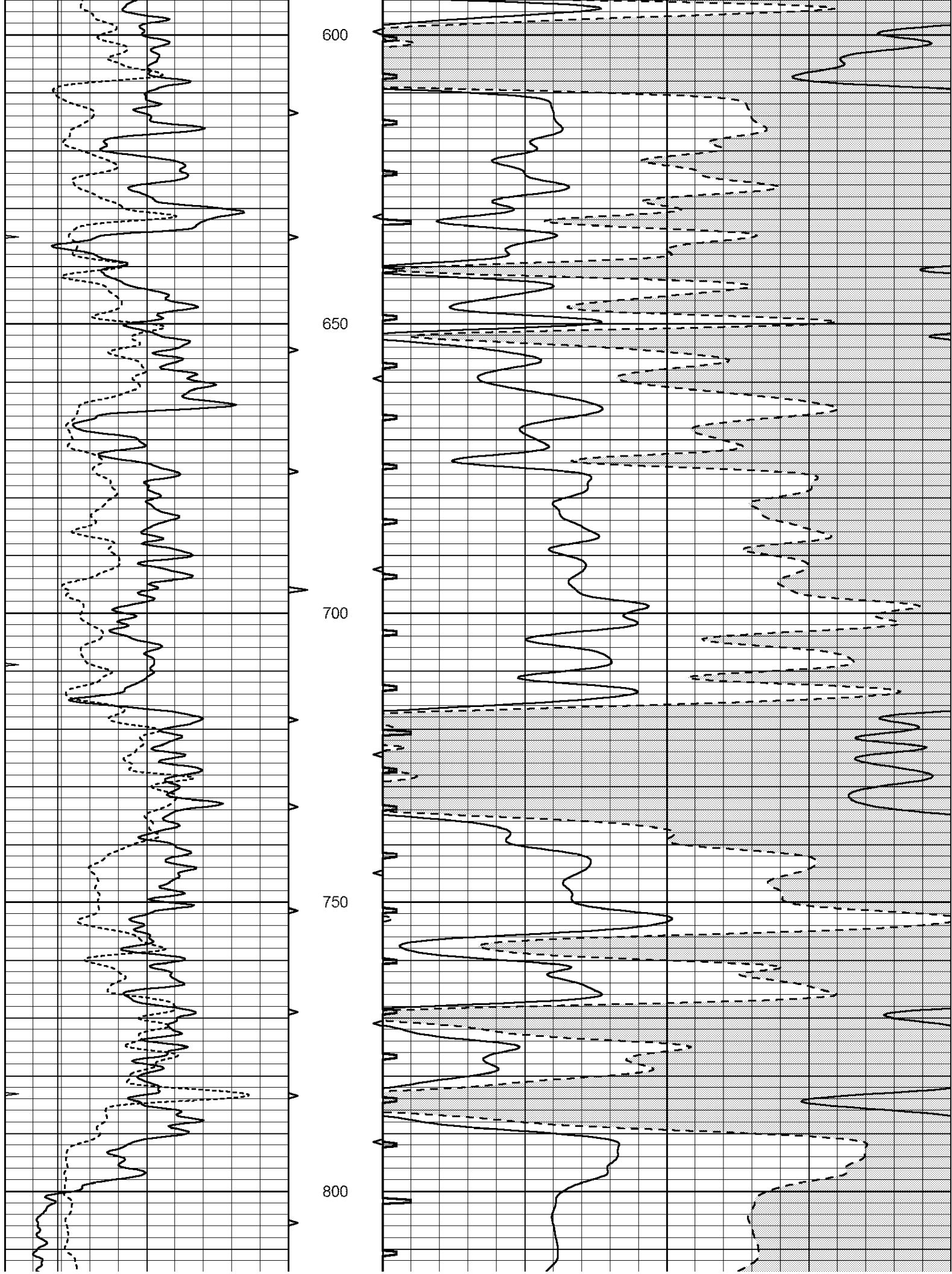
400

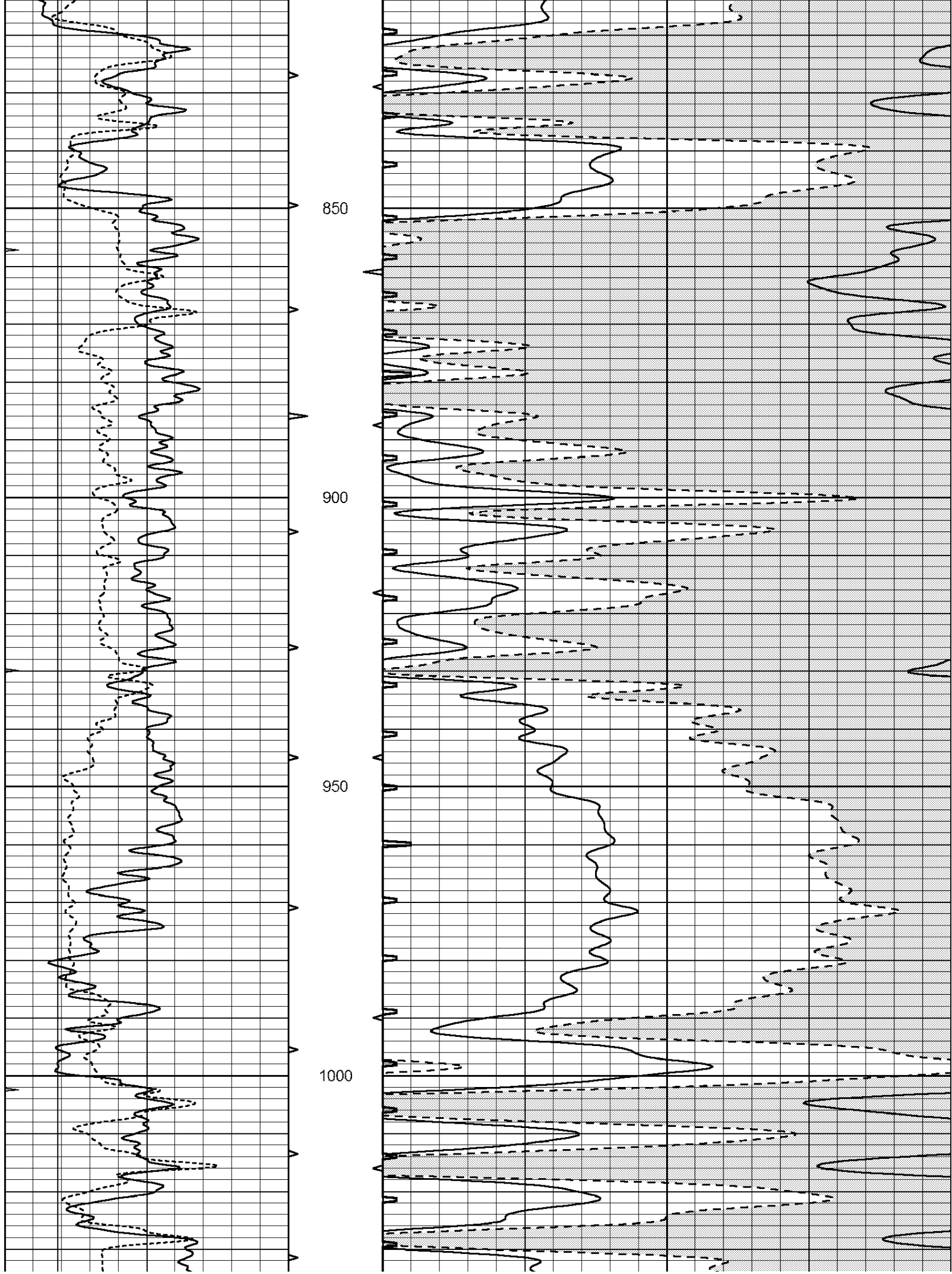
450

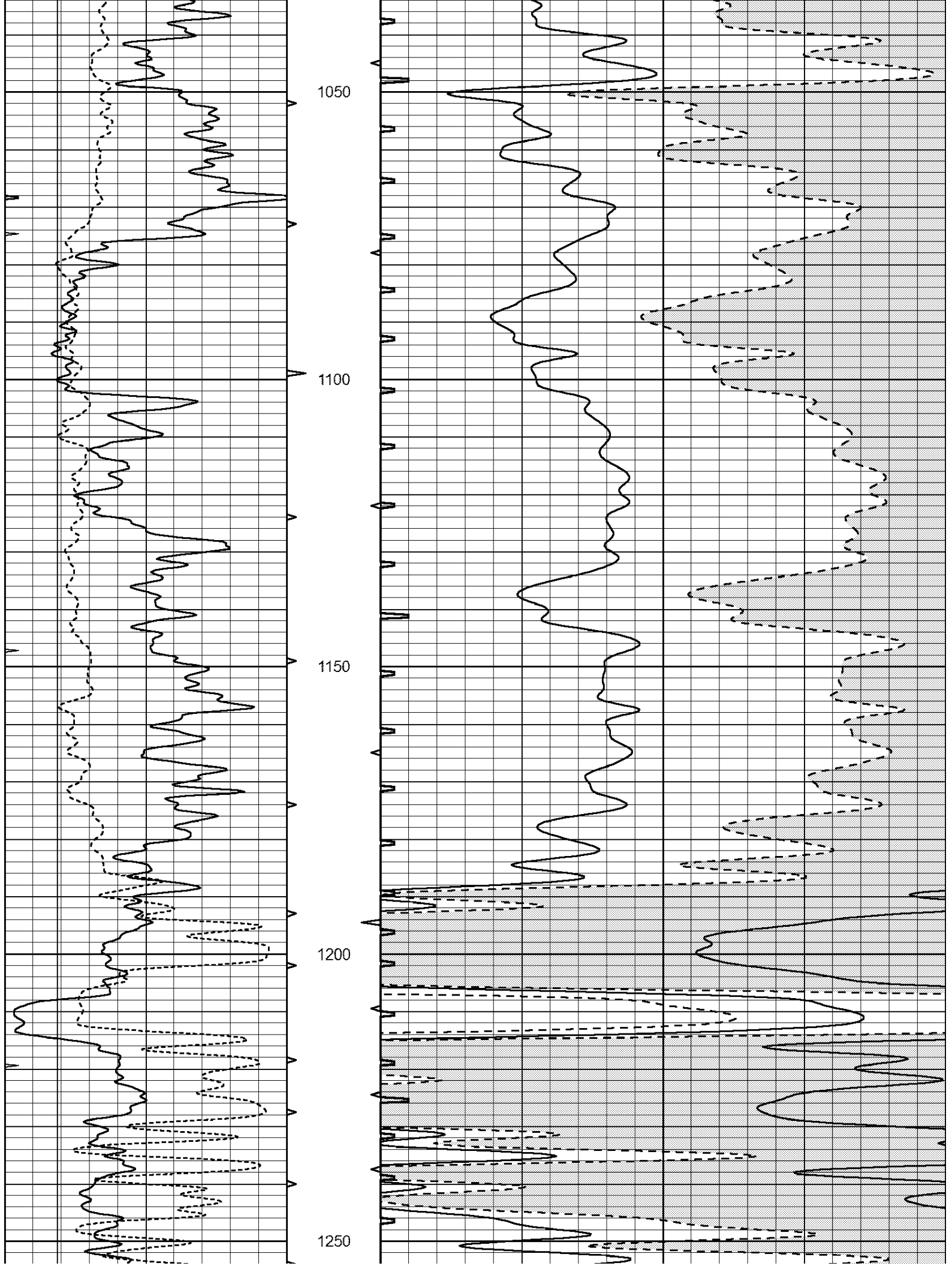
500

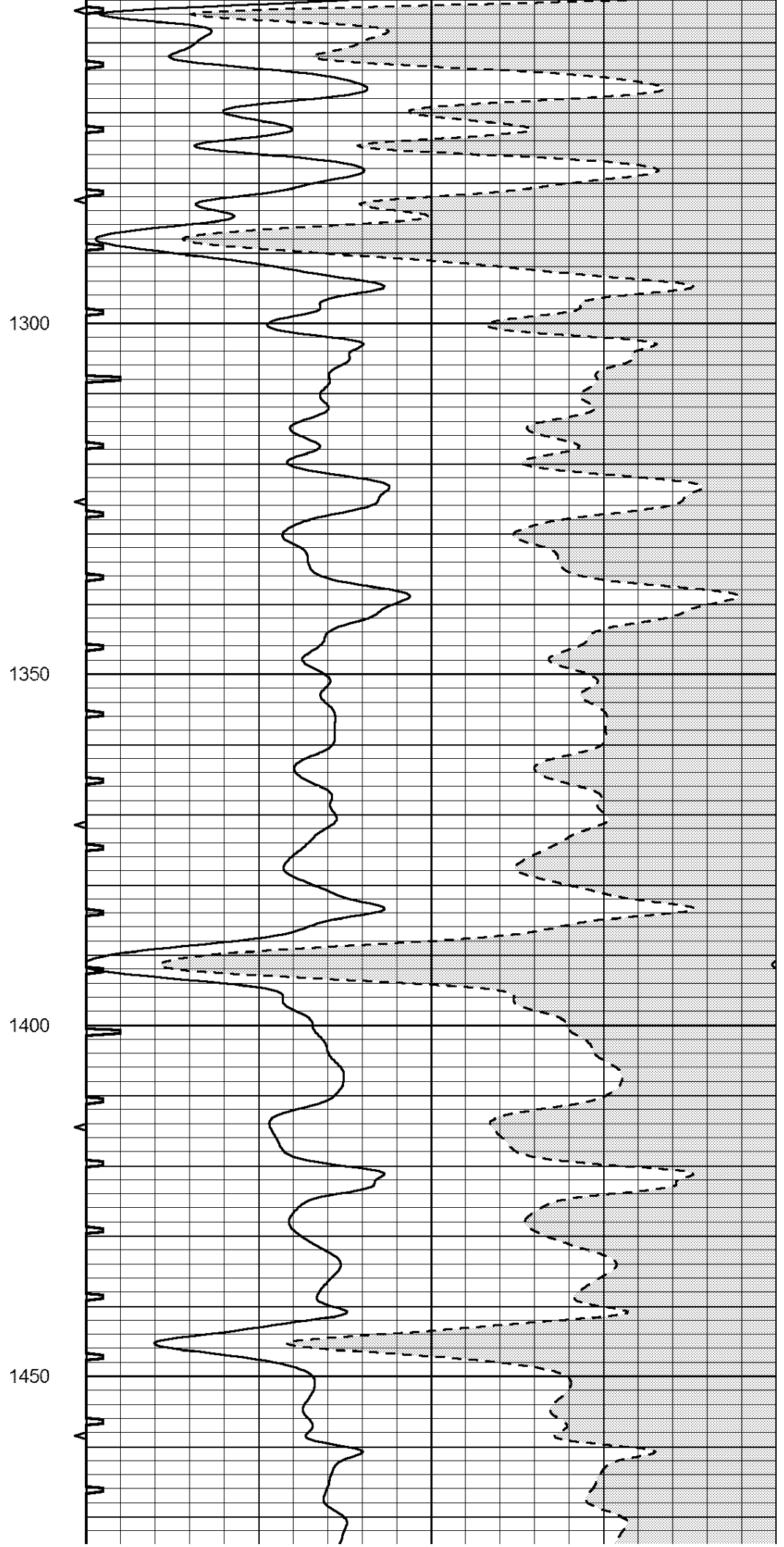
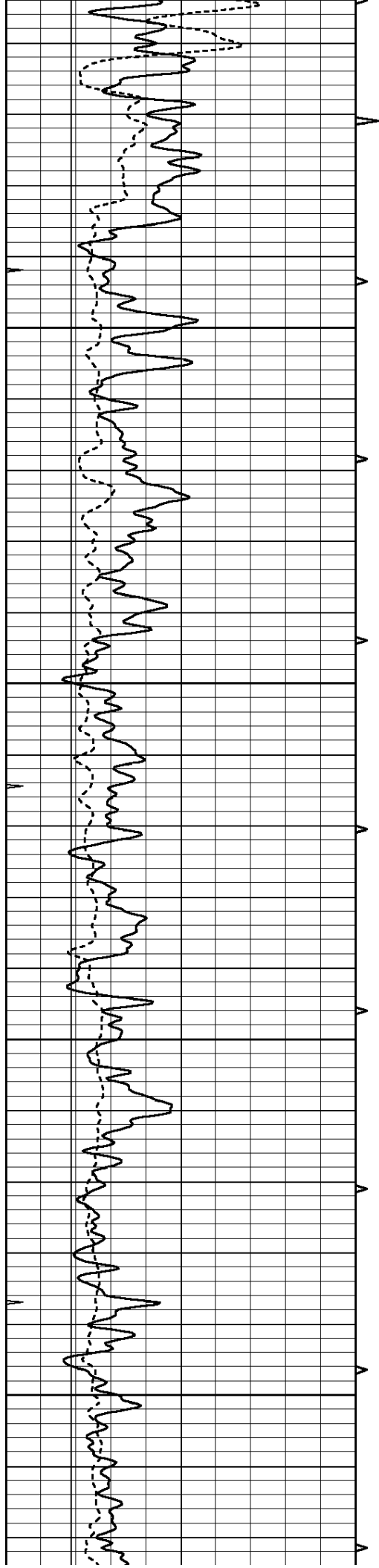
550

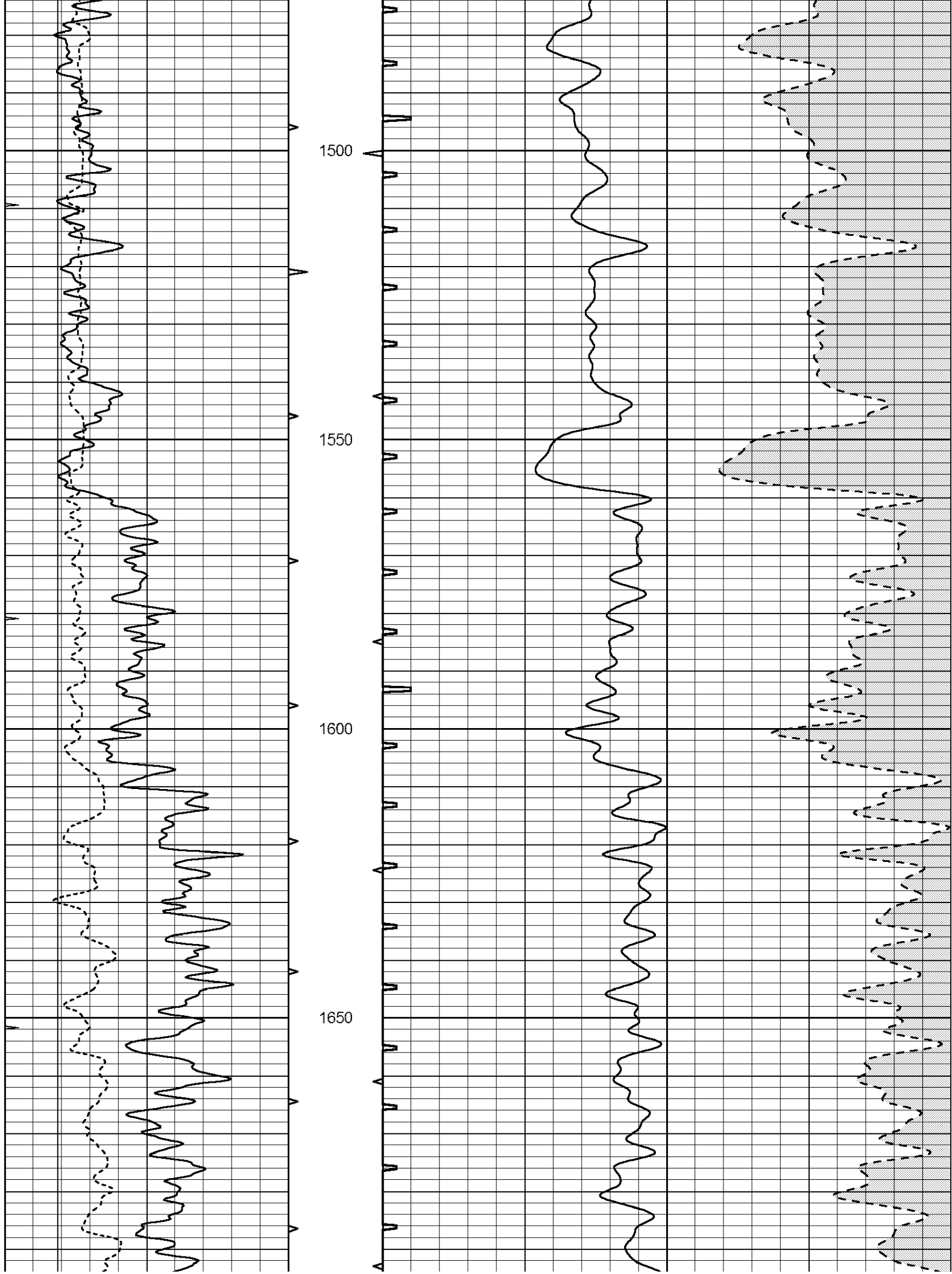


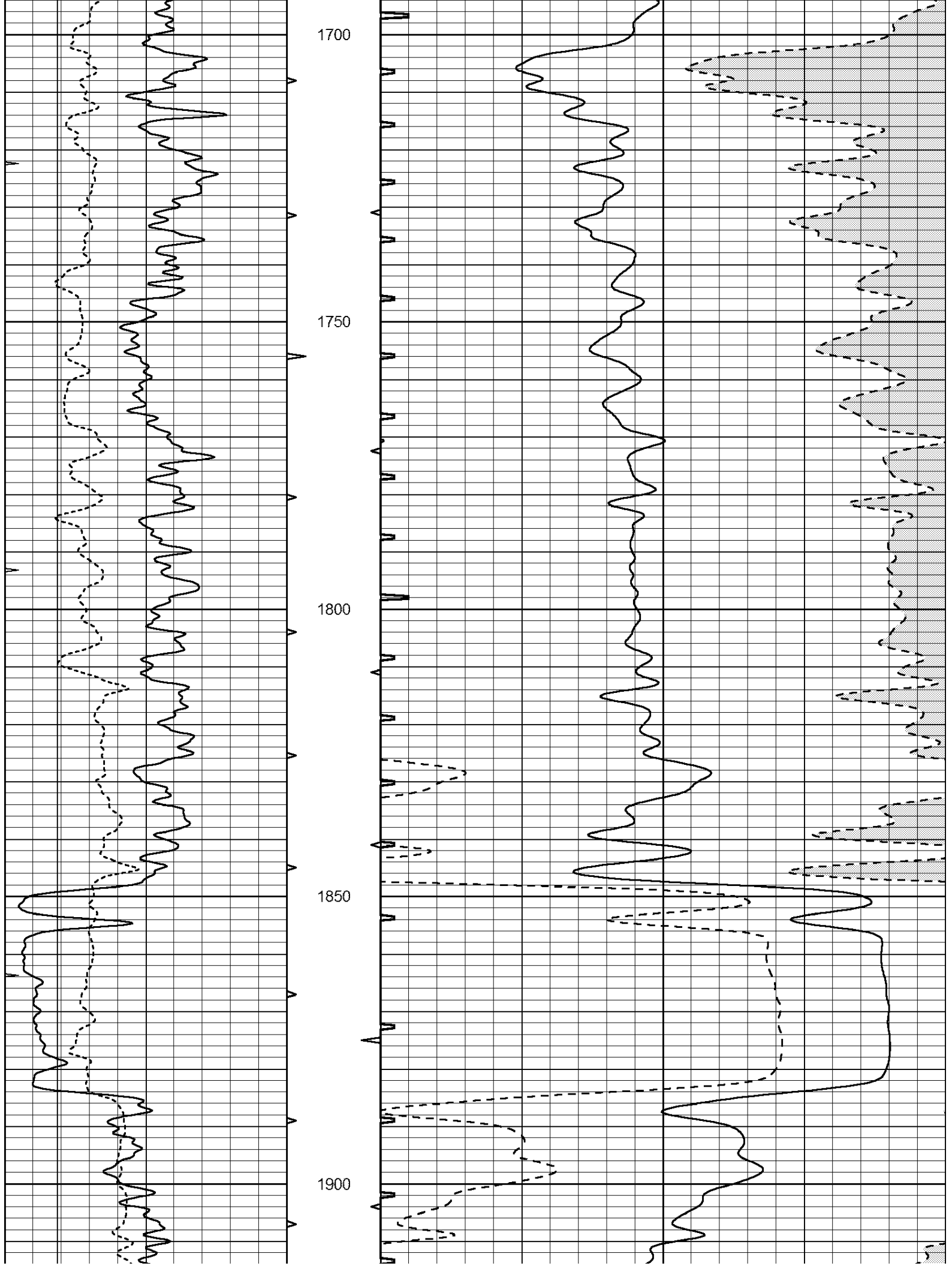


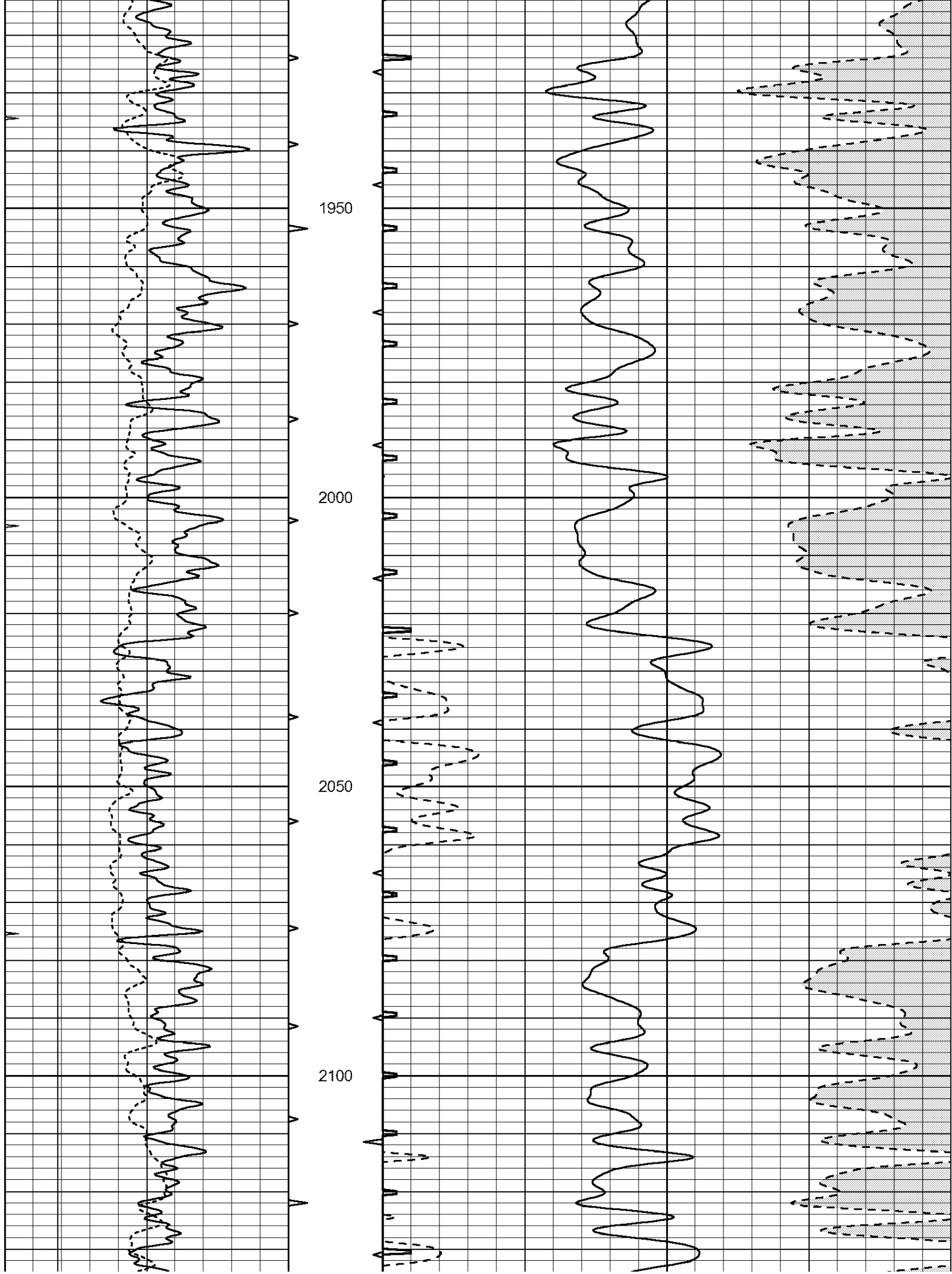


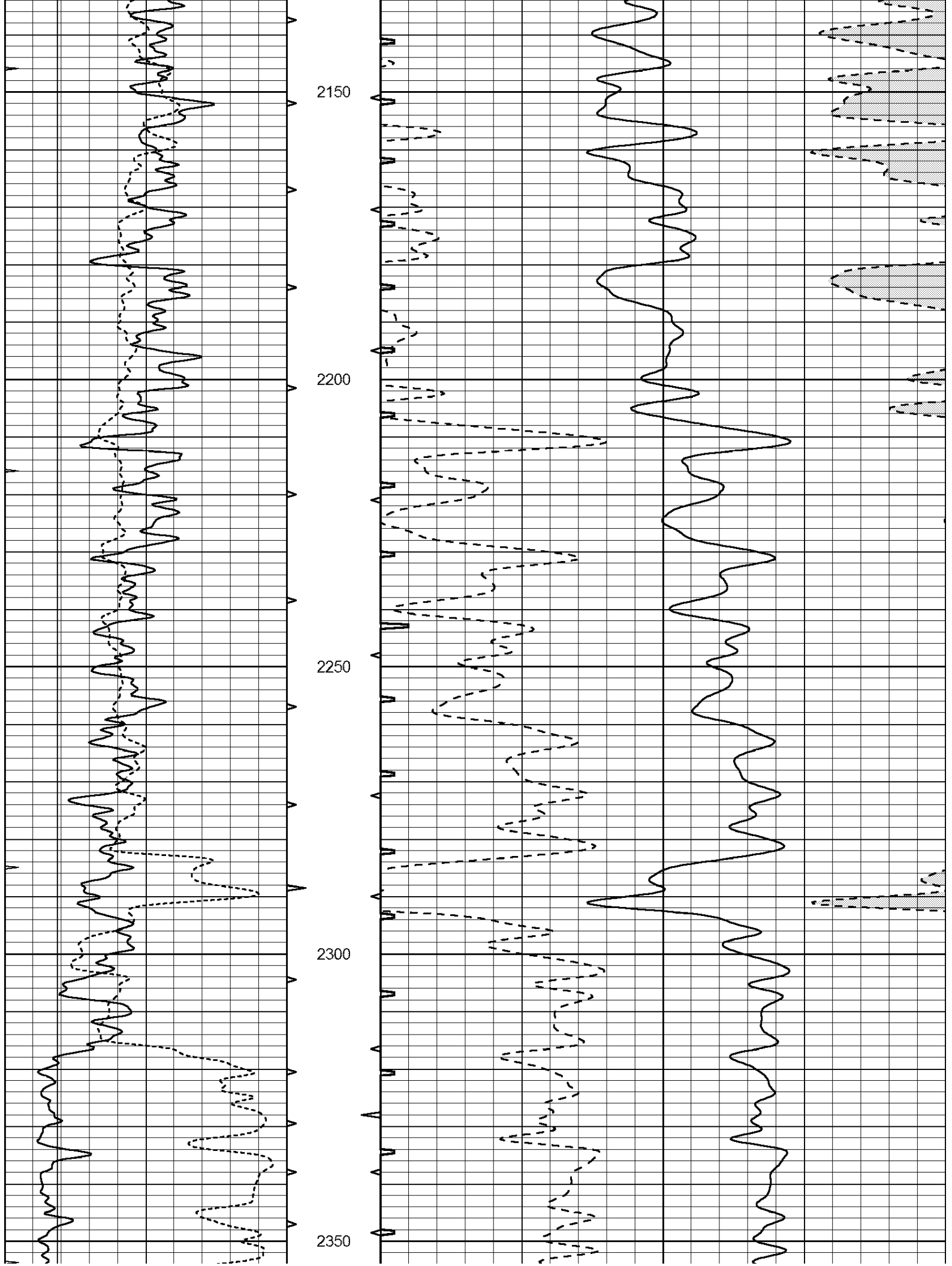


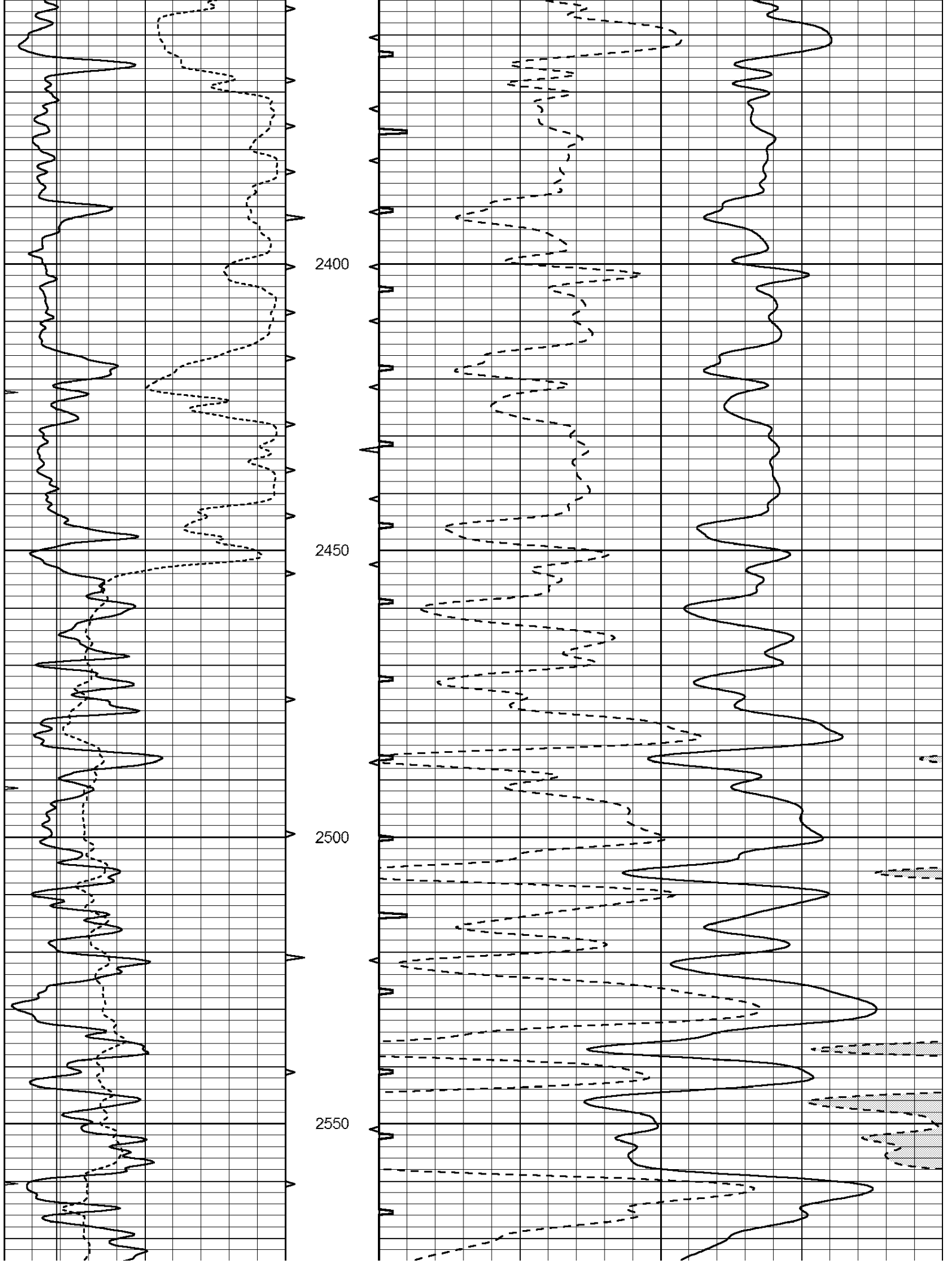


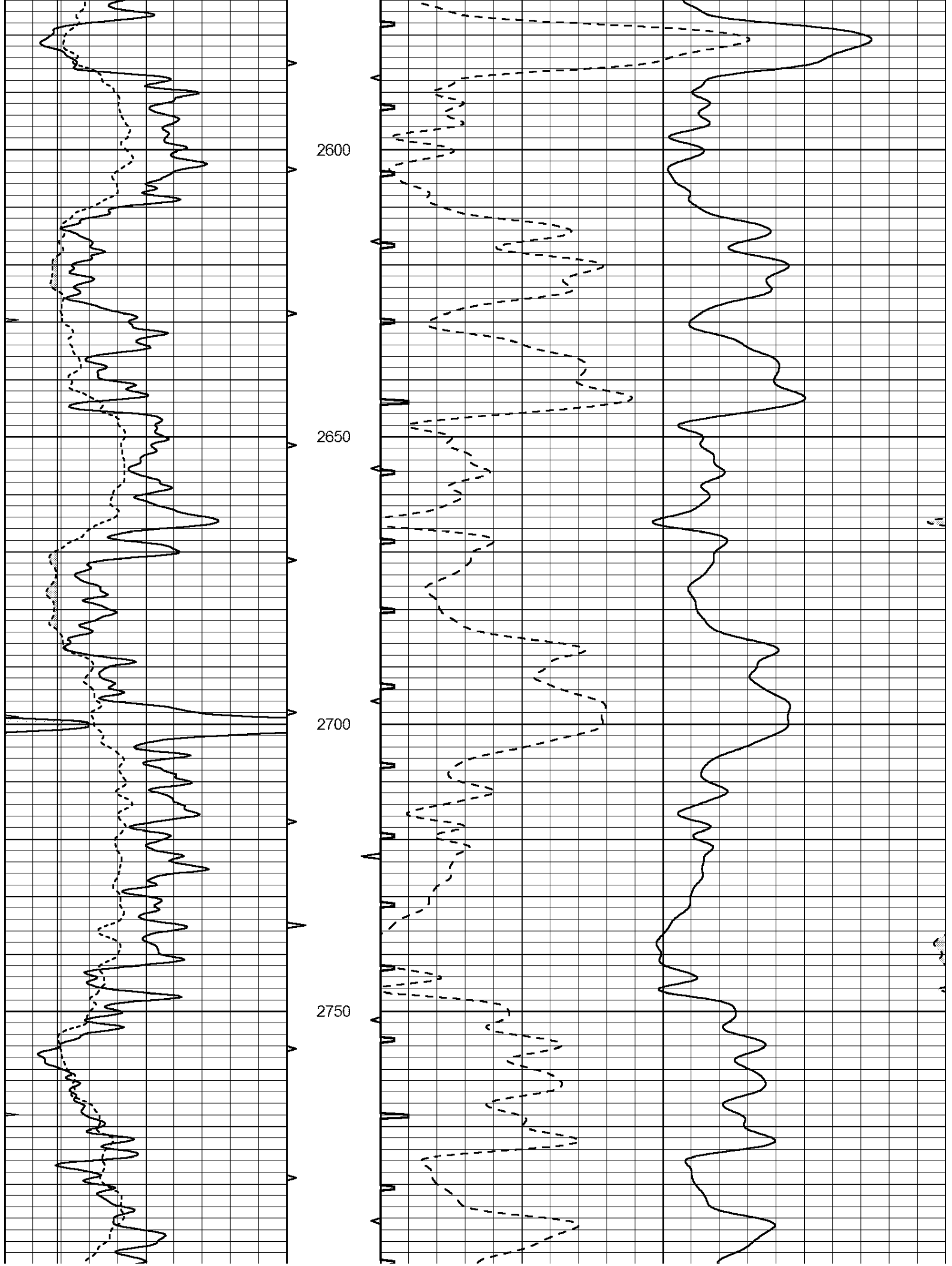


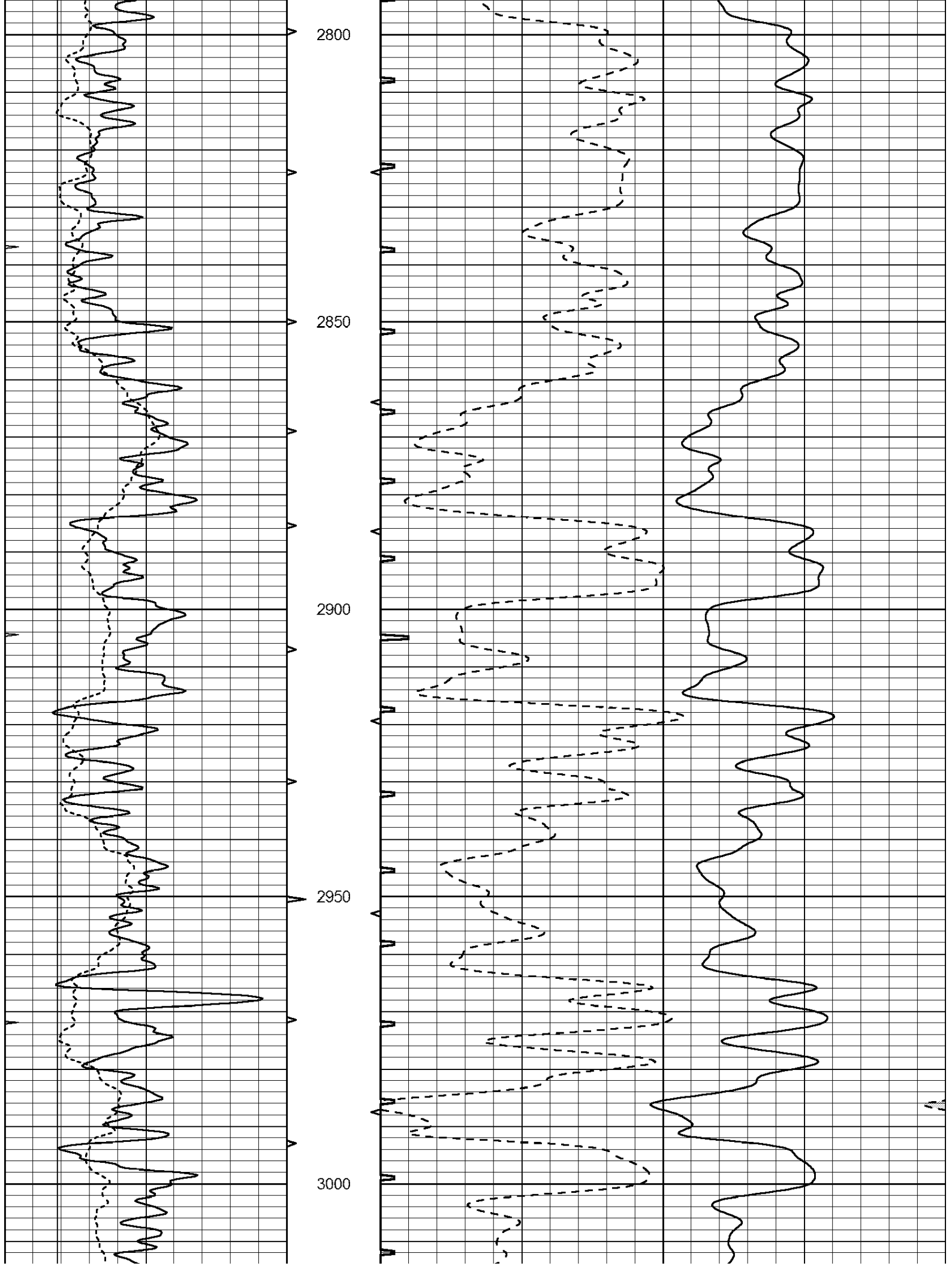


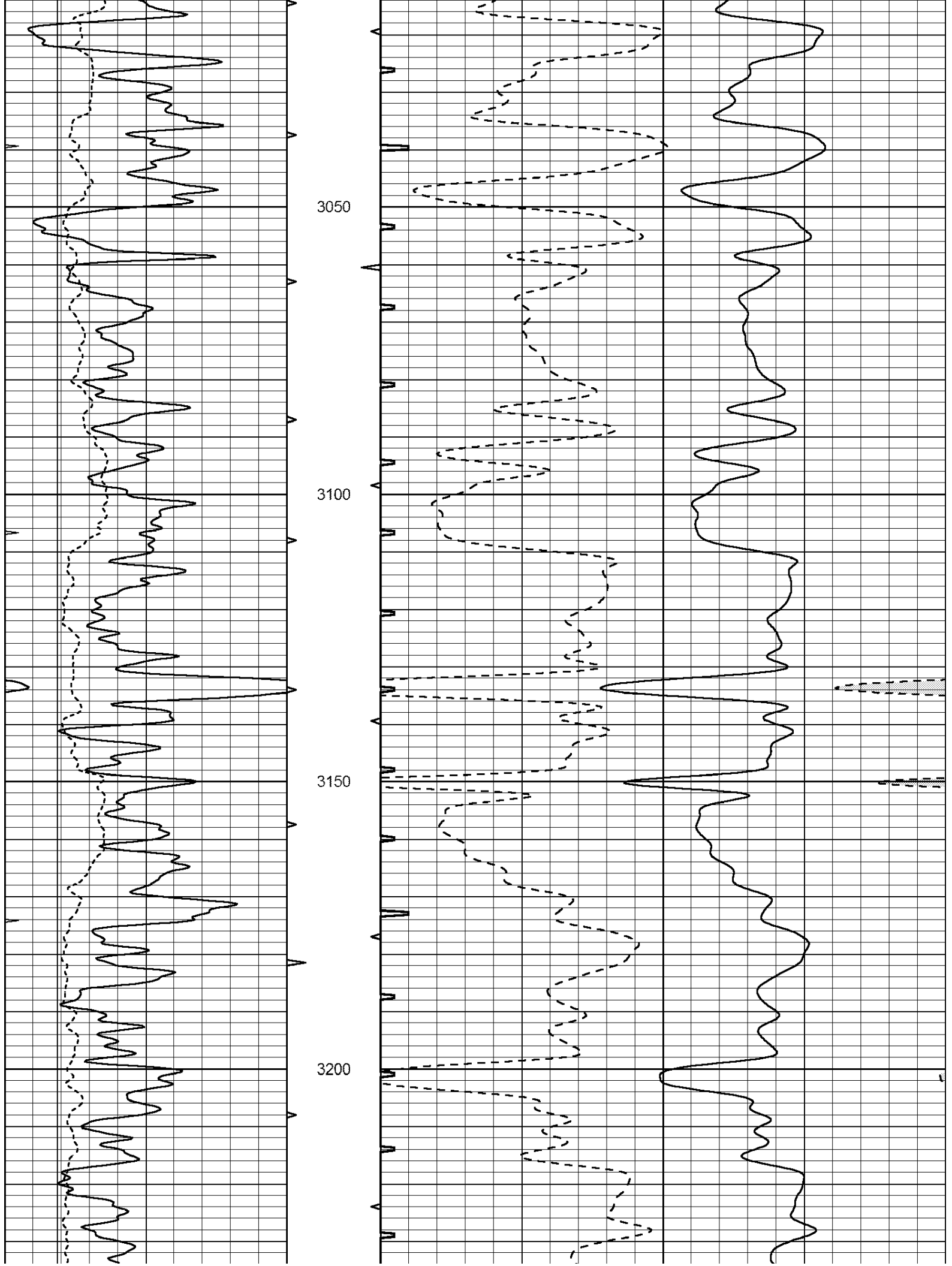


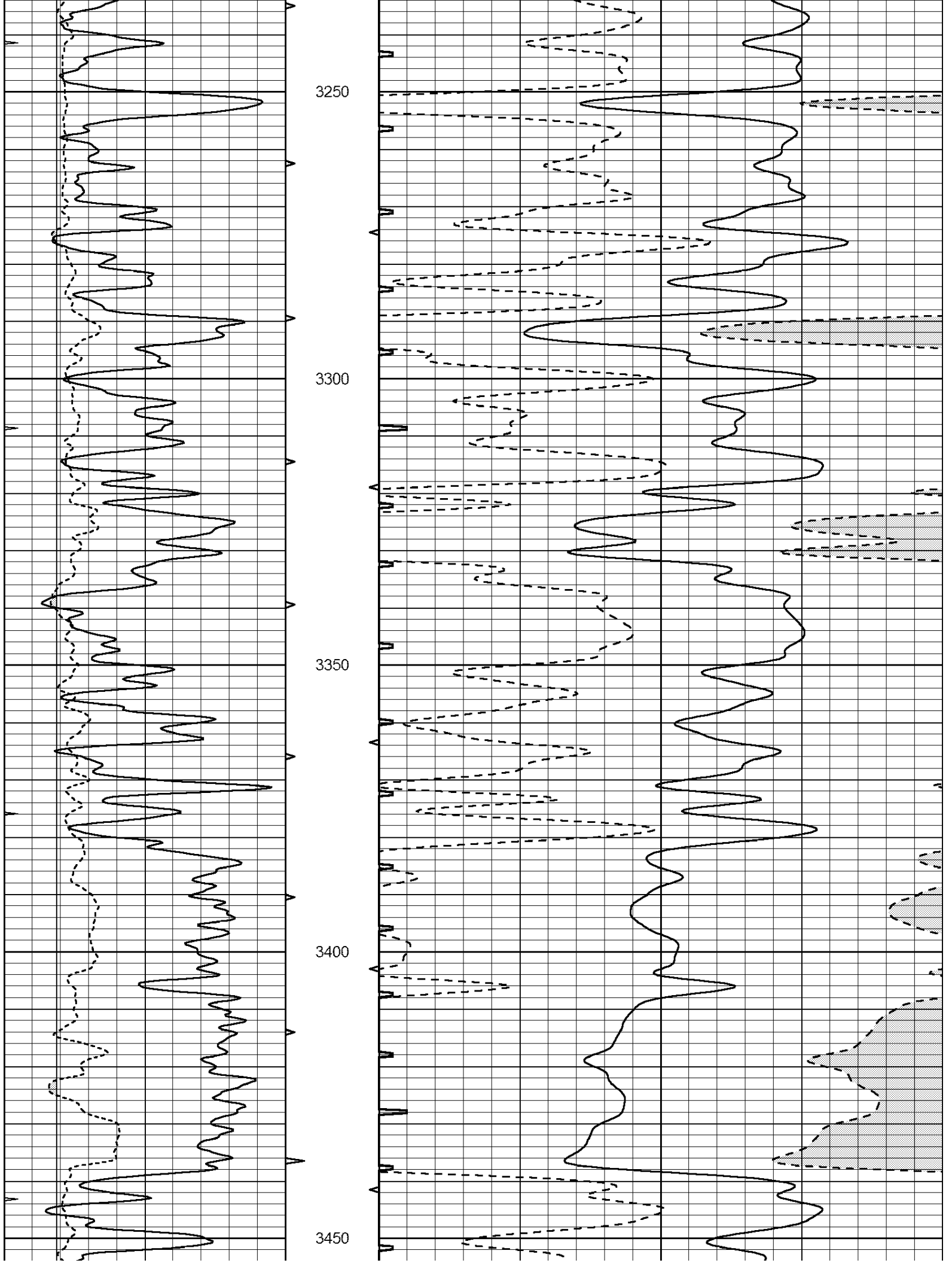


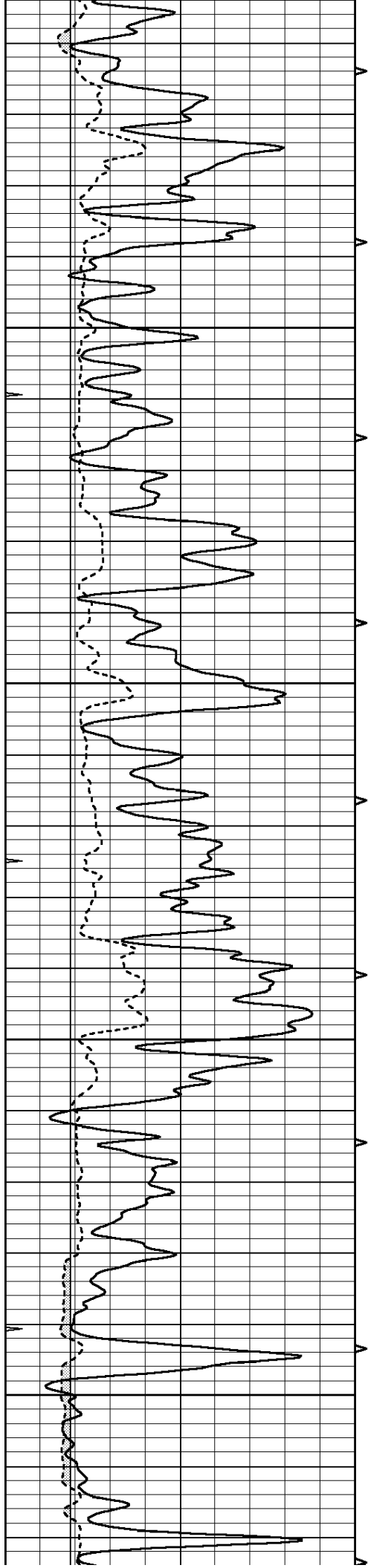










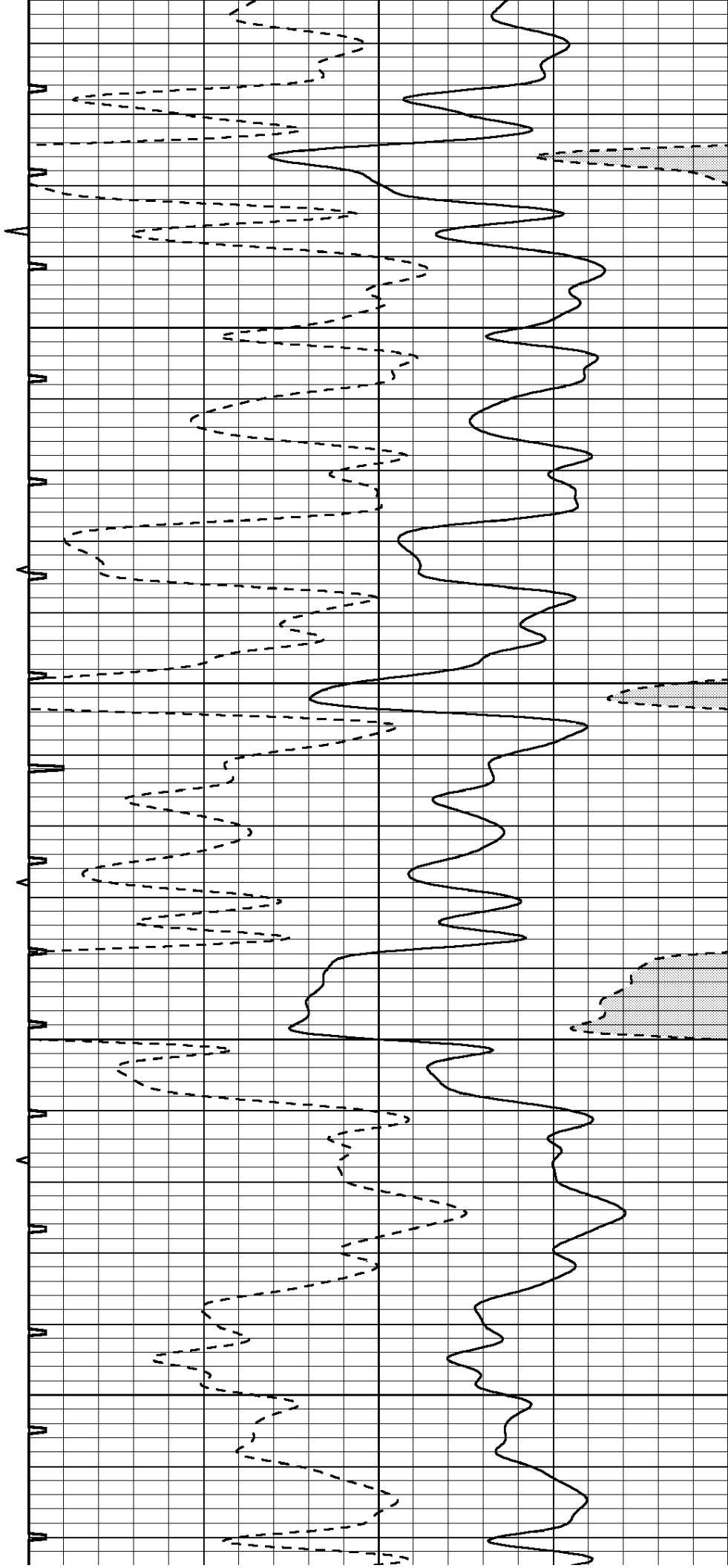


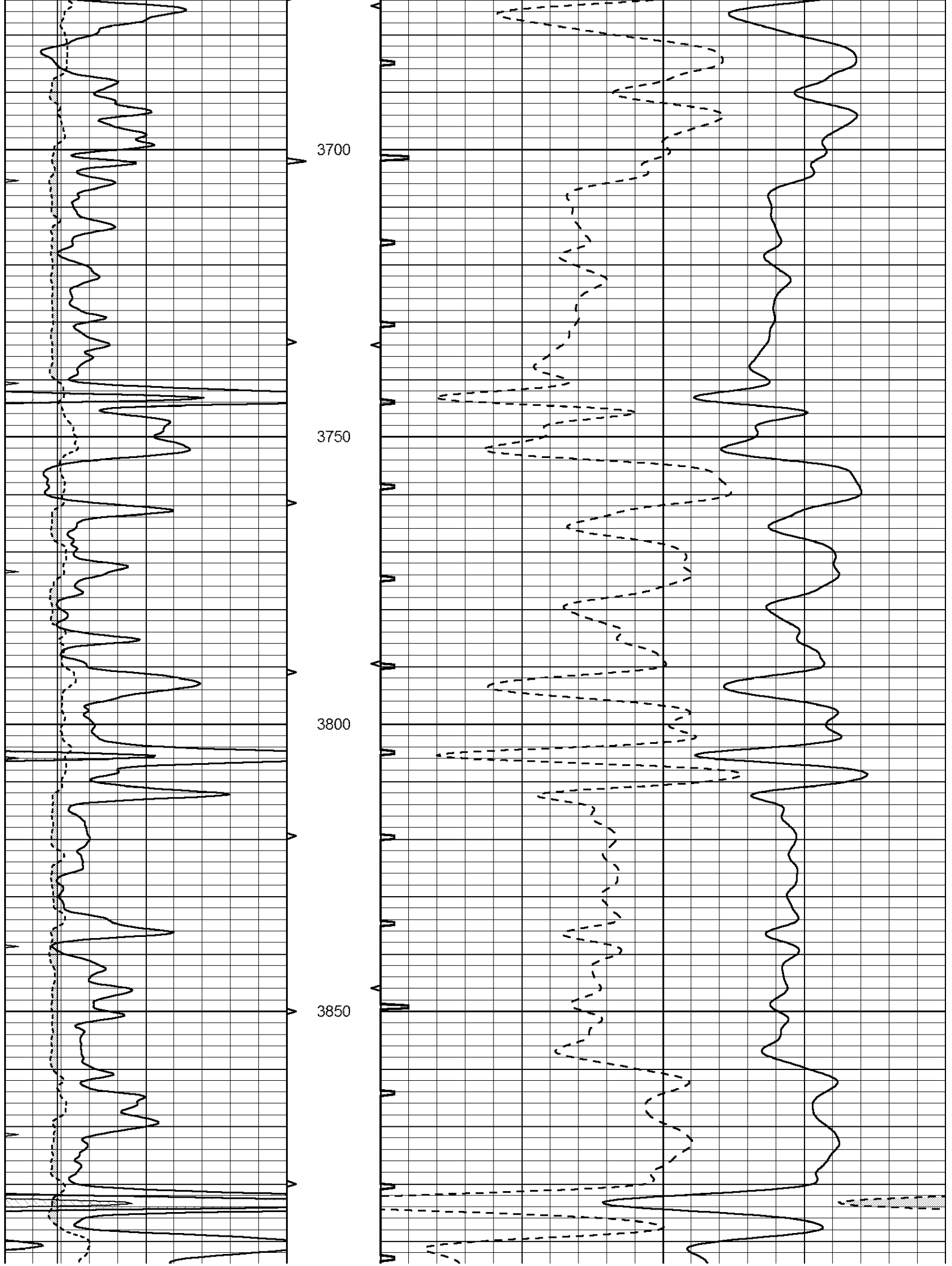
3500

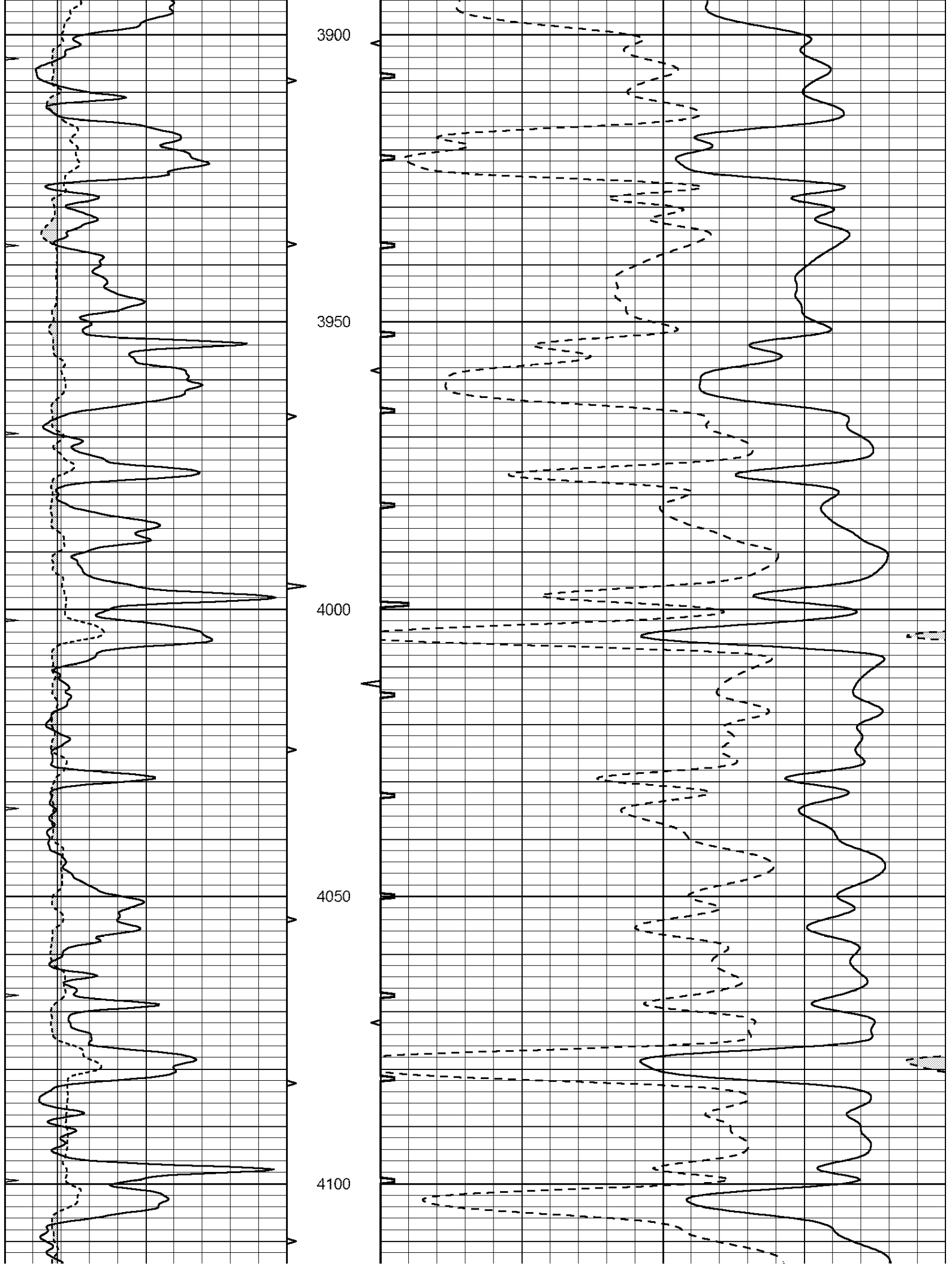
3550

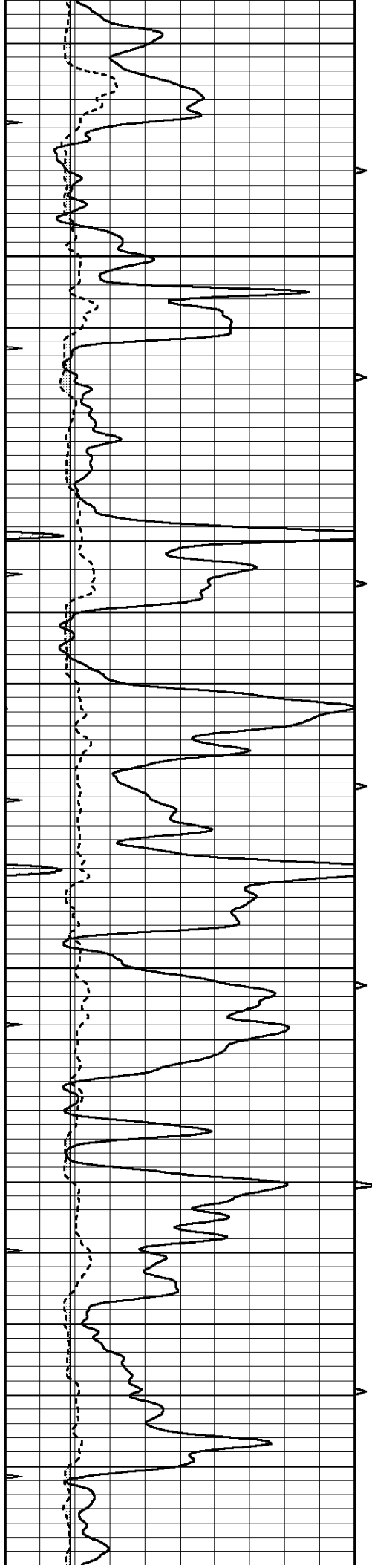
3600

3650







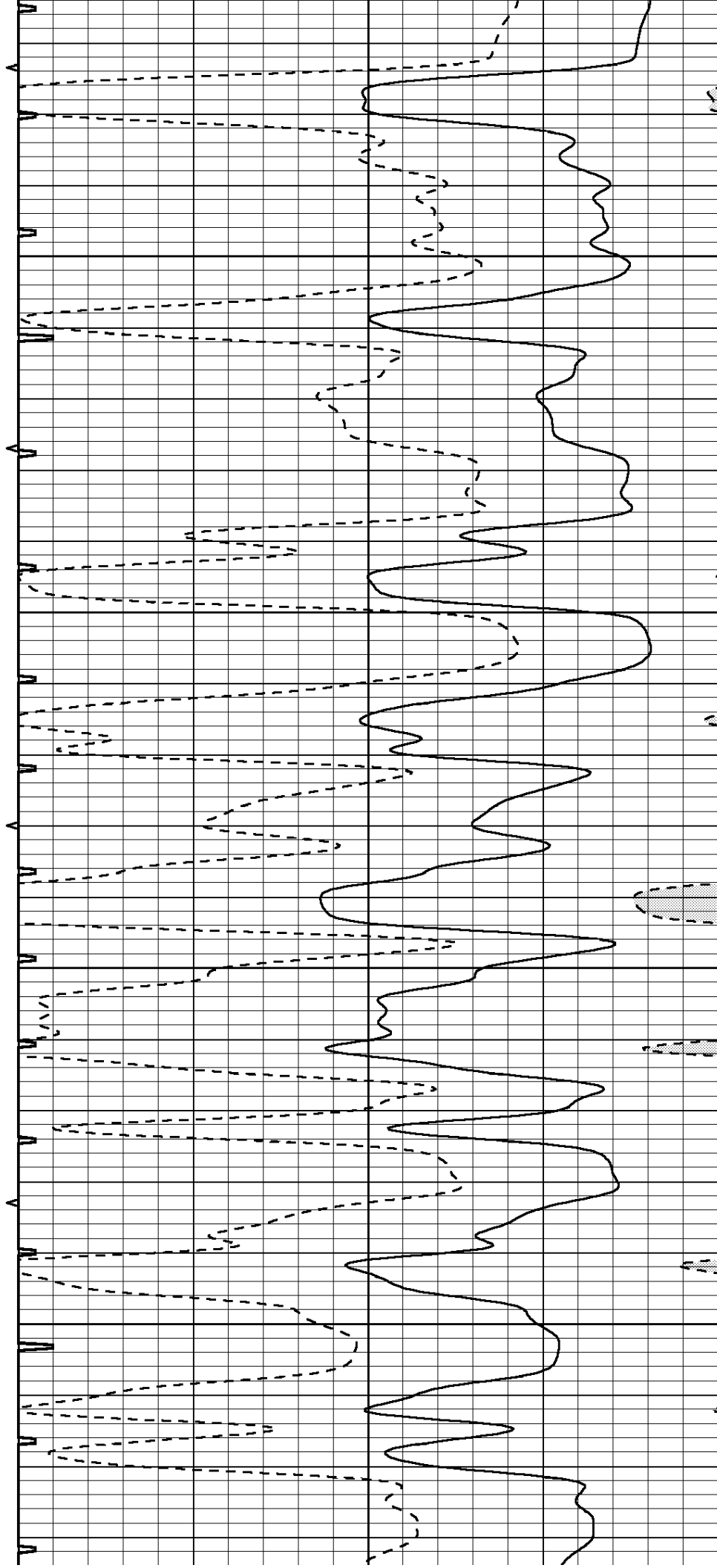


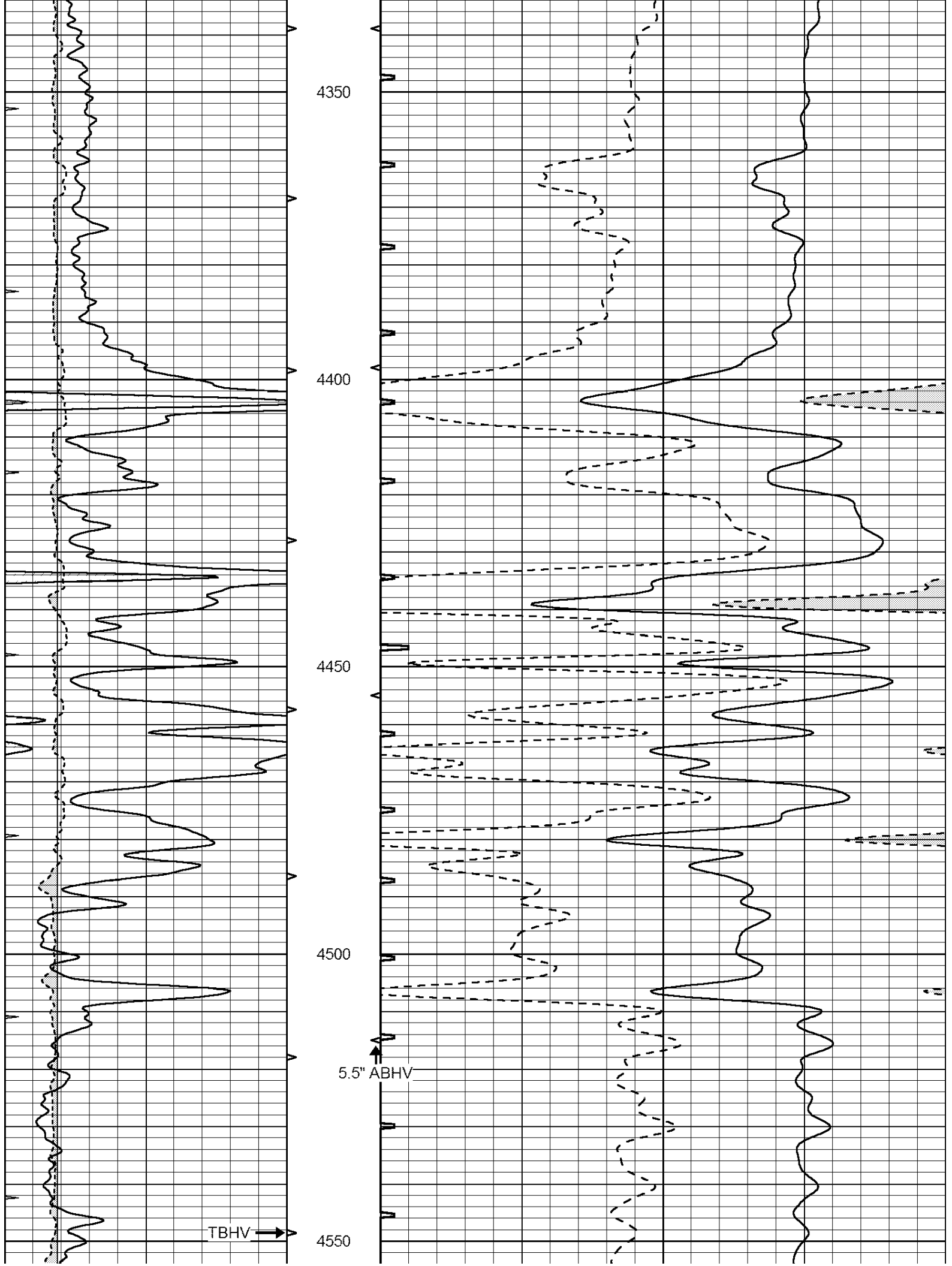
4150

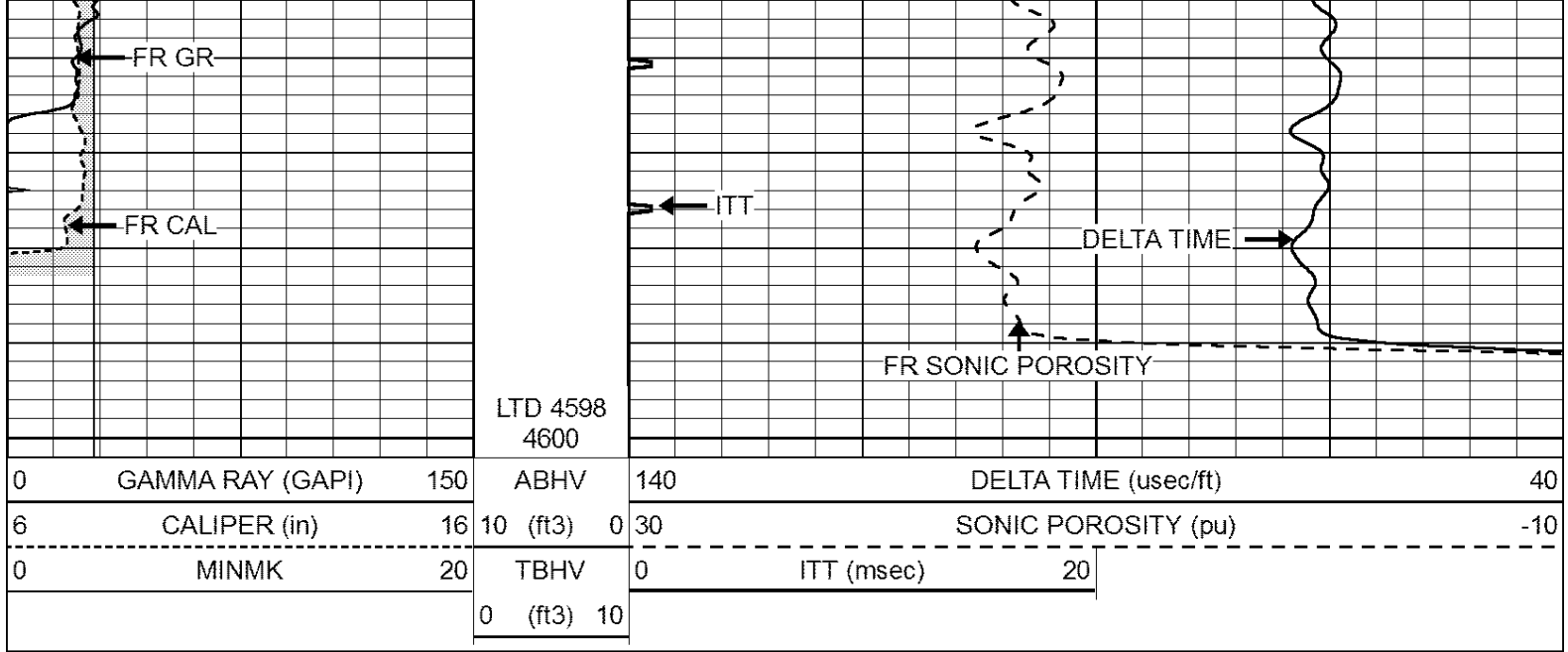
4200

4250

4300





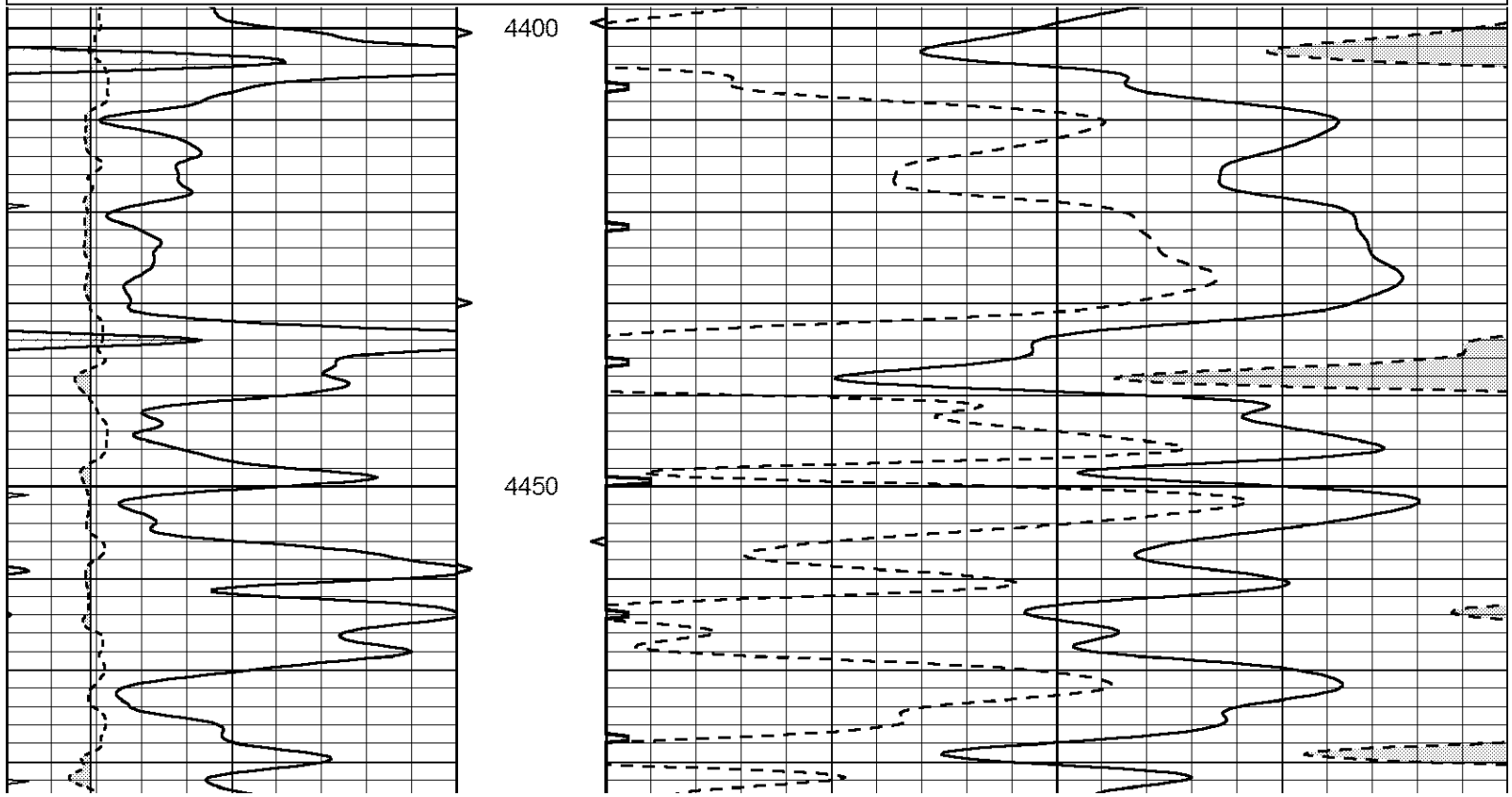


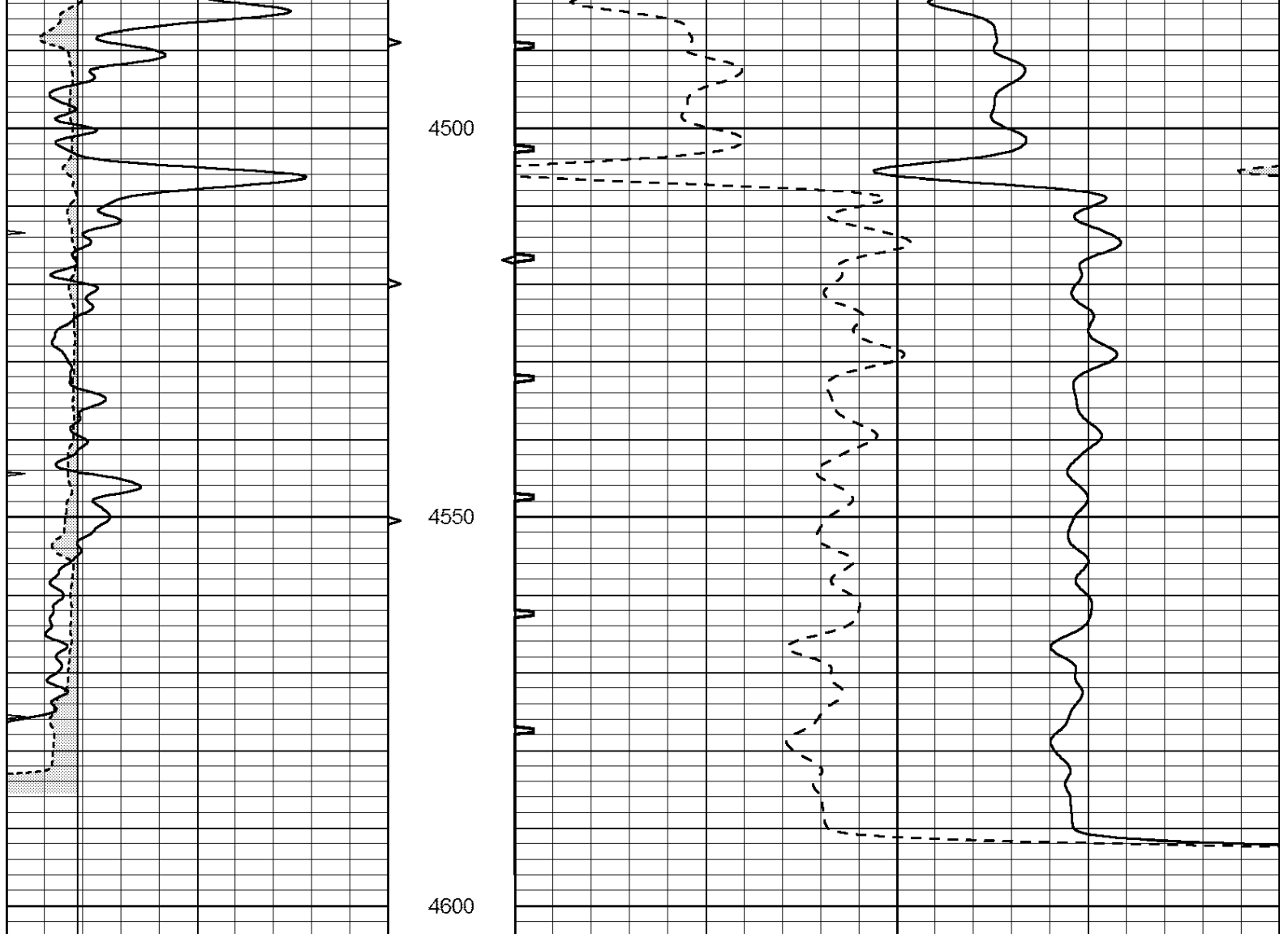
SUPERIOR
Hays,
Kansas

REPEAT SECTION

Database File: 408425pe.db
 Dataset Pathname: pass5.5
 Presentation Format: slt
 Dataset Creation: Wed Mar 07 18:29:00 2012 by Calc Open-Cased 110302
 Charted by: Depth in Feet scaled 1:240

0	GAMMA RAY (GAPI)	150	ABHV	140	DELTA TIME (usec/ft)	40
6	CALIPER (in)	16	10 (ft3) 0	30	SONIC POROSITY (pu)	-10
0	MINMK	20	TBHV	0	ITT (msec)	20
			0 (ft3) 10			





0	GAMMA RAY (GAPI)	150	ABHV	140	DELTA TIME (usec/ft)	40	
6	CALIPER (in)	16	10 (ft3)	0	30	SONIC POROSITY (pu)	-10
0	MINMK	20	TBHV	0	ITT (msec)	20	
			0 (ft3)	10			