



DIGITAL LOG (785) 625-3858

Microresistivity Log

API No. 15-101-22,363-00-00

Company **Credo Petroleum Corporation**
 Well **Ruby #1-35**
 Field **Lohoff East**
 County **Lane** State **Kansas**

Location **735' FNL / 535' FWL**

Sec: **35** Twp: **16S** Rge: **29W**

Other Services
 CNL/CDL
 DIL/BHCS

Permanent Datum **Ground Level** Elevation **2801**
 Log Measured From **Kelly Bushing** 5 Ft. Above Perm. Datum
 Drilling Measured From **Kelly Bushing**

Elevation
 K.B. 2806
 D.F. G.L. 2801

Date	4/14/2012
Run Number	Two
Depth Driller	4644
Depth Logger	4646
Bottom Logged Interval	4645
Top Log Interval	3500
Casing Driller	8.625 @ 255
Casing Logger	255
Bit Size	7.875
Type Fluid in Hole	Chemical
Salinity, ppm CL	2000
Density / Viscosity	9.3 55
pH / Fluid Loss	10.0 6.8
Source of Sample	Flowline
Rm @ Meas. Temp	1.00 @ 67
Rmf @ Meas. Temp	0.75 @ 67
Rmc @ Meas. Temp	1.35 @ 67
Source of Rmf / Rmc	Charts
Rm @ BHT	0.55 @ 122
Operating Rig Time	5 Hours
Max Rec. Temp. F	122
Equipment Number	15
Location	Hays
Recorded By	R. Barnhart
Witnessed By	Bruce Ard

<<< Fold Here >>>

All interpretations are opinions based on inferences from electrical or other measurements and we cannot and do not guarantee the accuracy or correctness of any interpretation, and we shall not, except in the case of gross or willful negligence on our part, be liable or responsible for any loss, costs, damages, or expenses incurred or sustained by anyone resulting from any interpretation made by any of our officers, agents or employees. These interpretations are also subject to our general terms and conditions set out in our current Price Schedule.

Comments

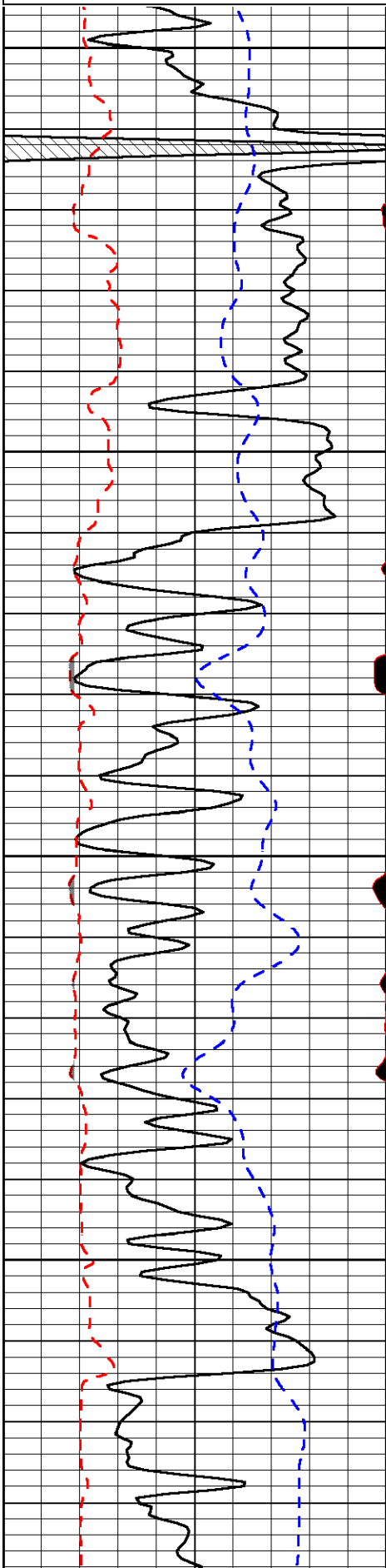
Thank you for using Log-Tech, Inc.
 (785) 625-3858

Healy, KS:
 E to Hwy 23, 1N,
 1/16E, S into

Database File: credohd.db
 Dataset Pathname: dil/crdmain
 Presentation Format: micro
 Dataset Creation: Sat Apr 14 12:33:42 2012
 Charted by: Depth in Feet scaled 1:240

0	Gamma Ray	150
6	MCAL (GAPI)	16
2.875	Mud Cake (GAPI)	7.875
-200	SP	0

0	Micro Inverse 1 X 1	40
0	Micro Normal 2"	40
10000	Line Weight	0
		LSPD

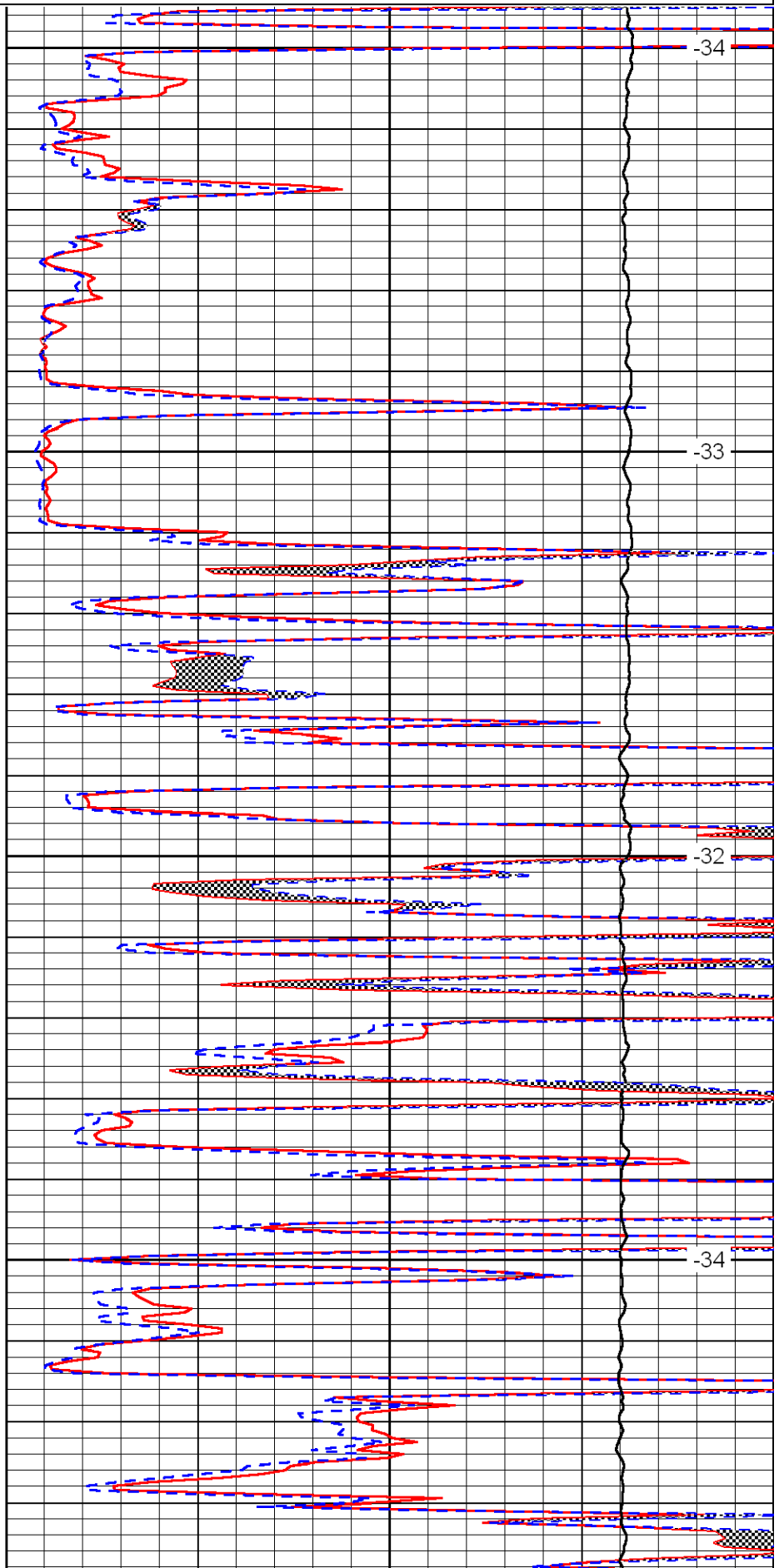


3500

3550

3600

3650

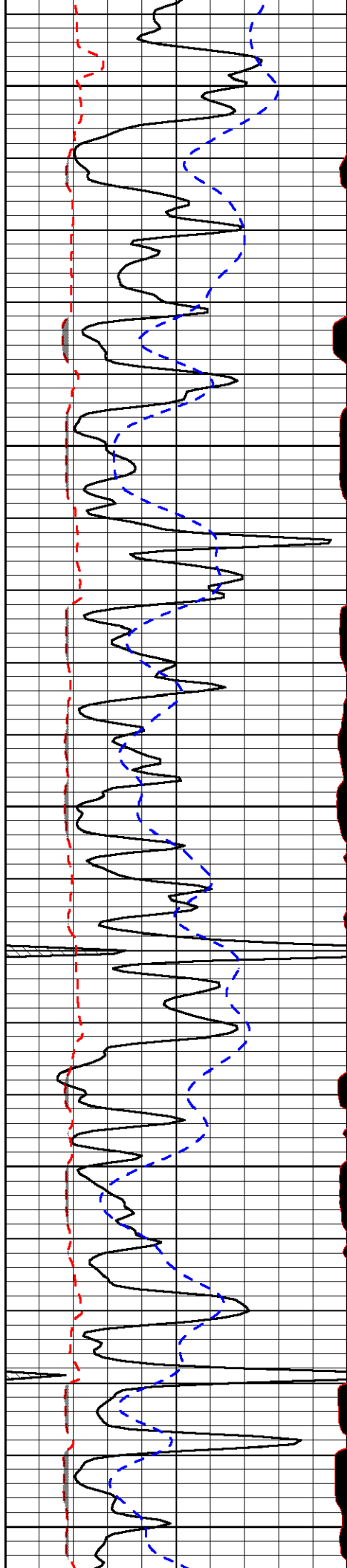


-34

-33

-32

-34



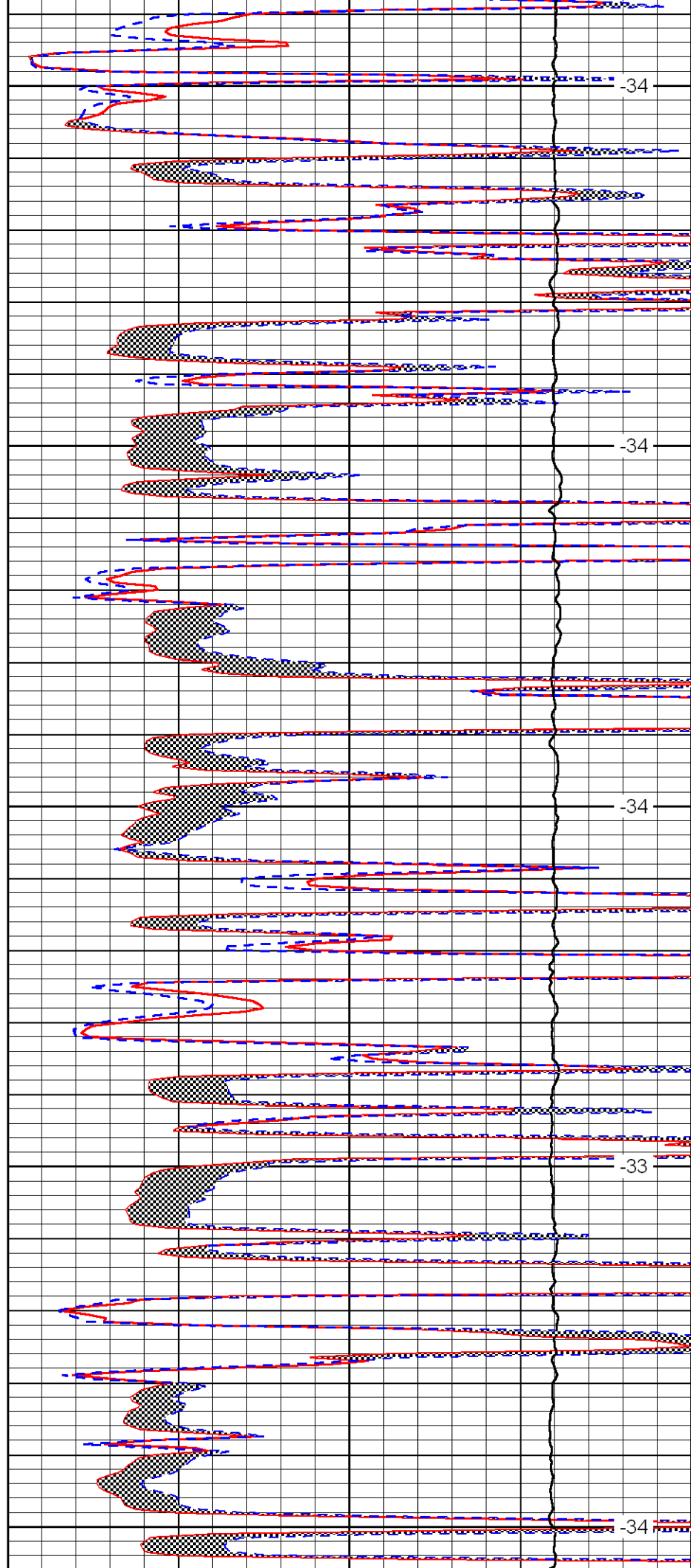
3700

3750

3800

3850

3900



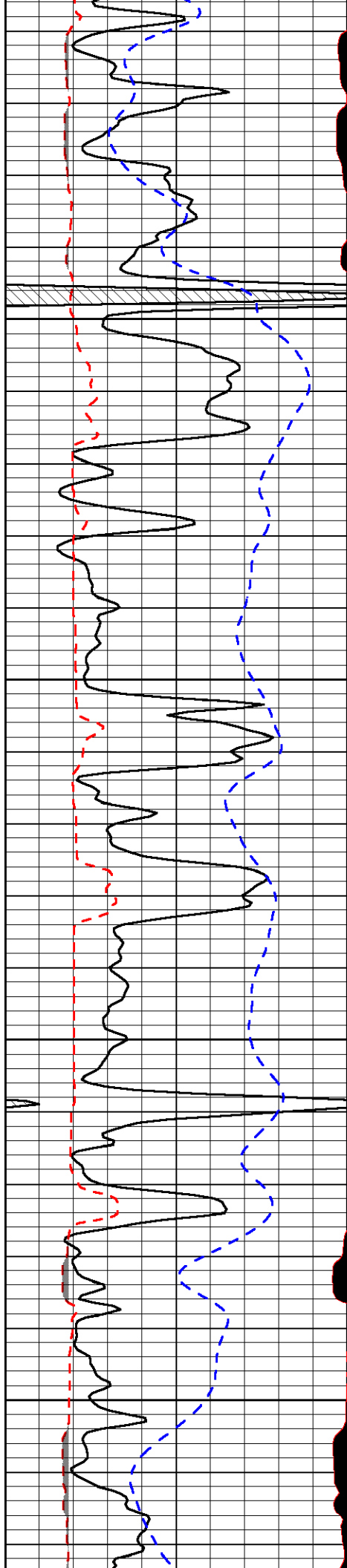
-34

-34

-34

-33

-34

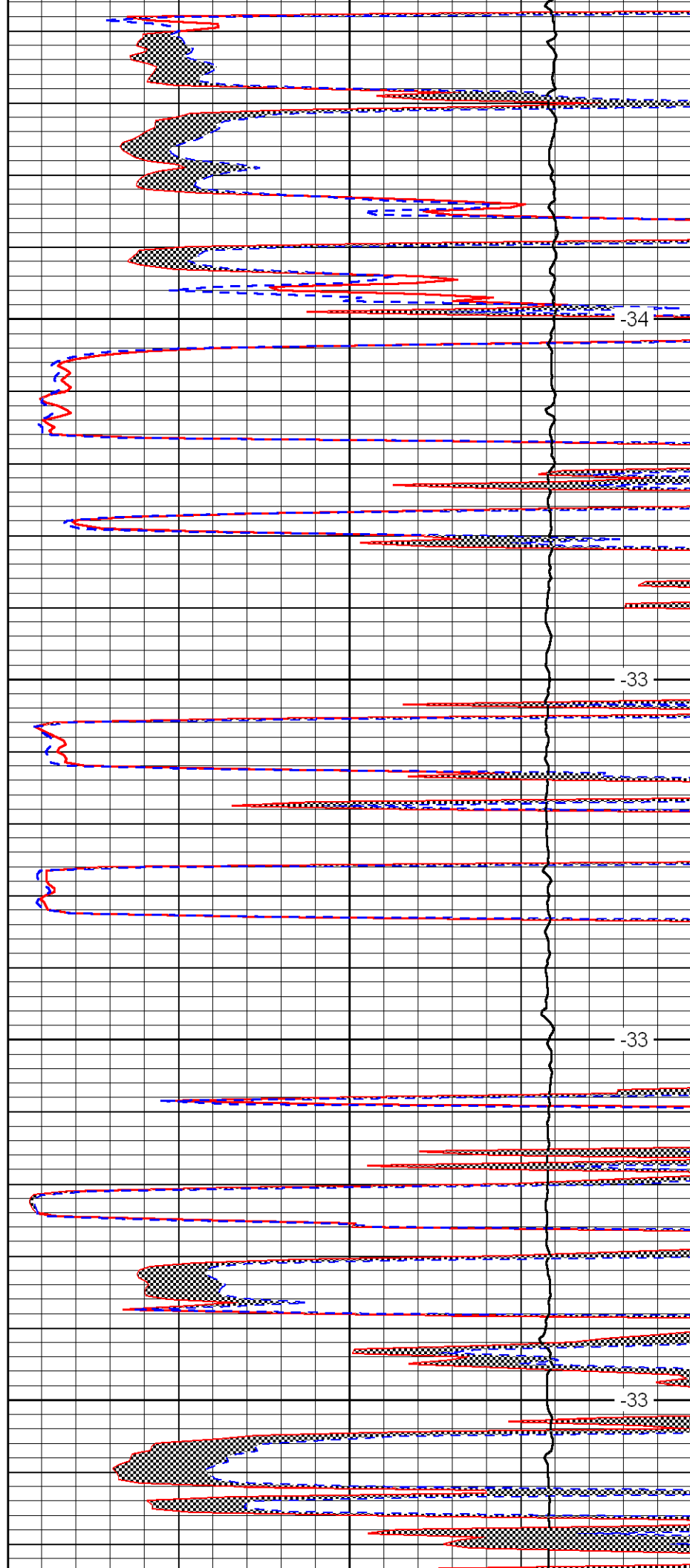


3950

4000

4050

4100

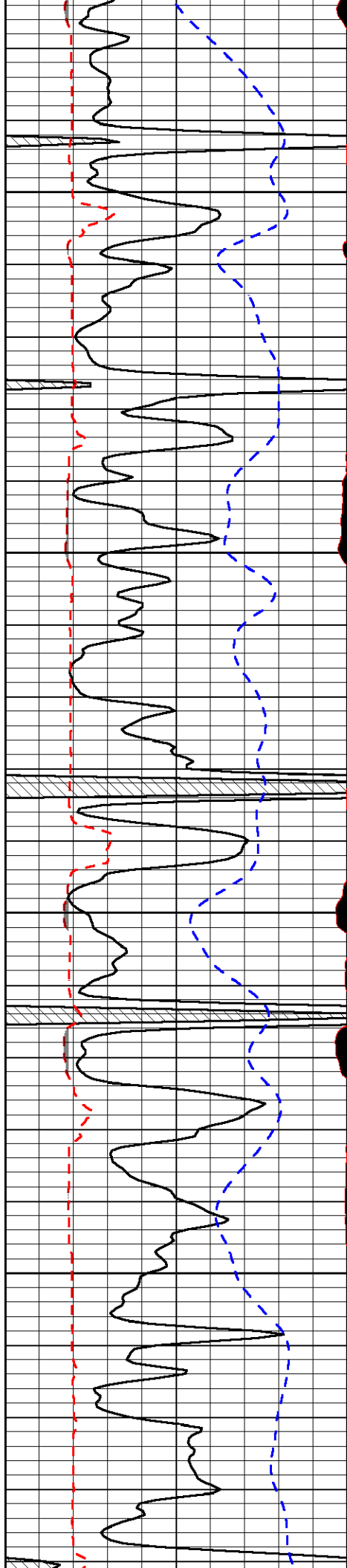


-34

-33

-33

-33

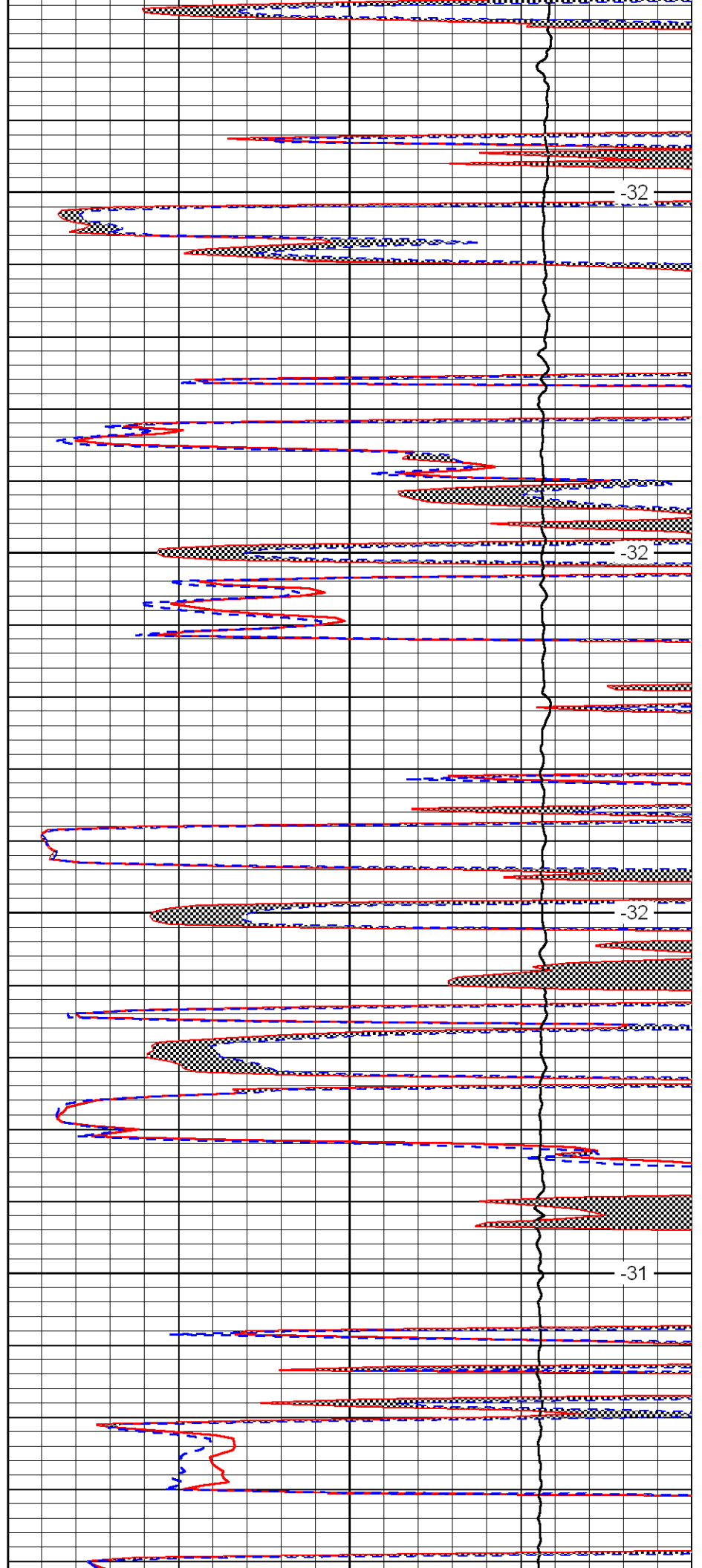


4150

4200

4250

4300

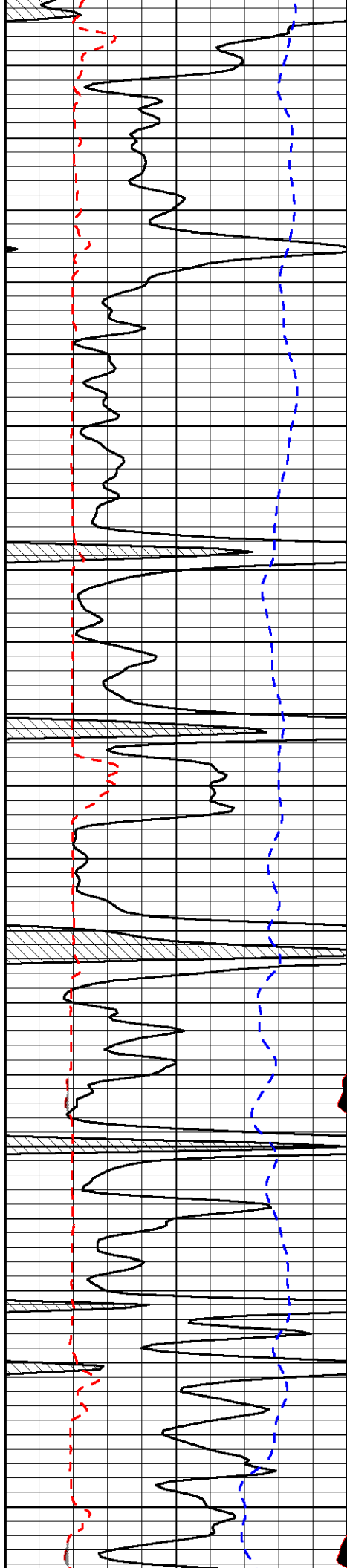


-32

-32

-32

-31



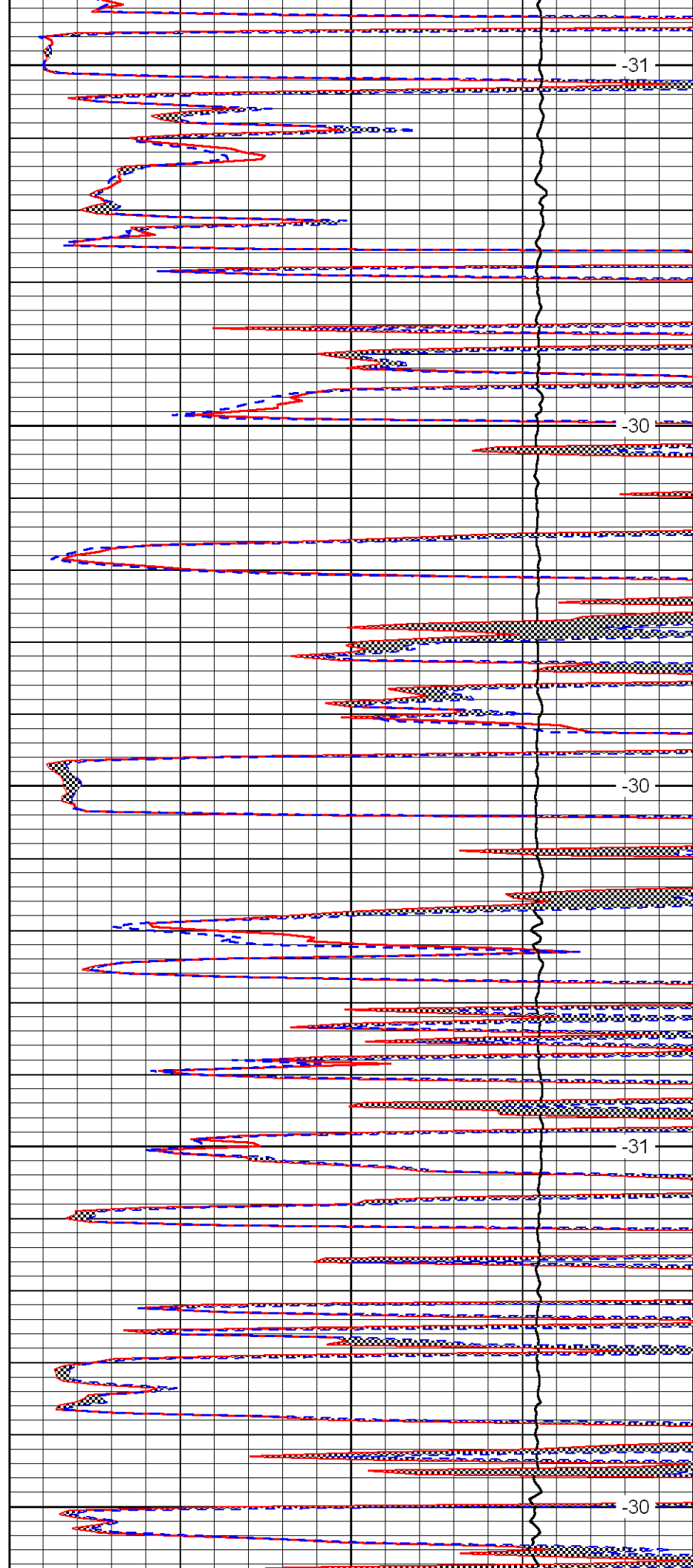
4350

4400

4450

4500

4550



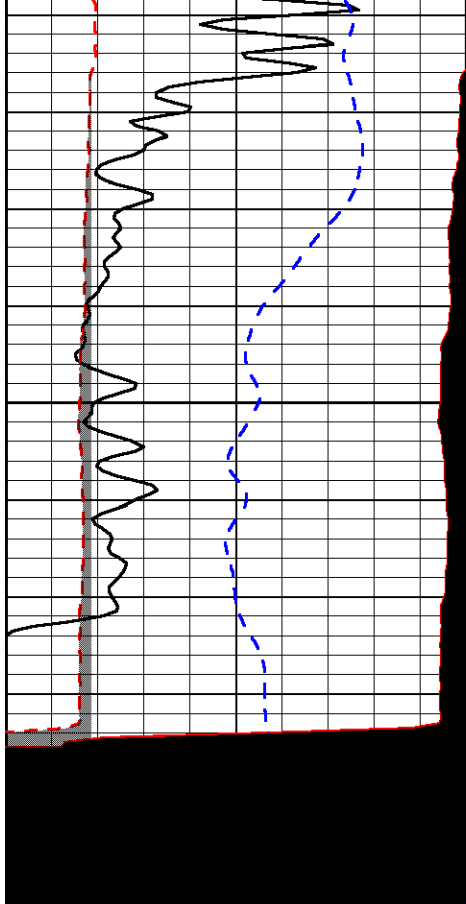
-31

-30

-30

-31

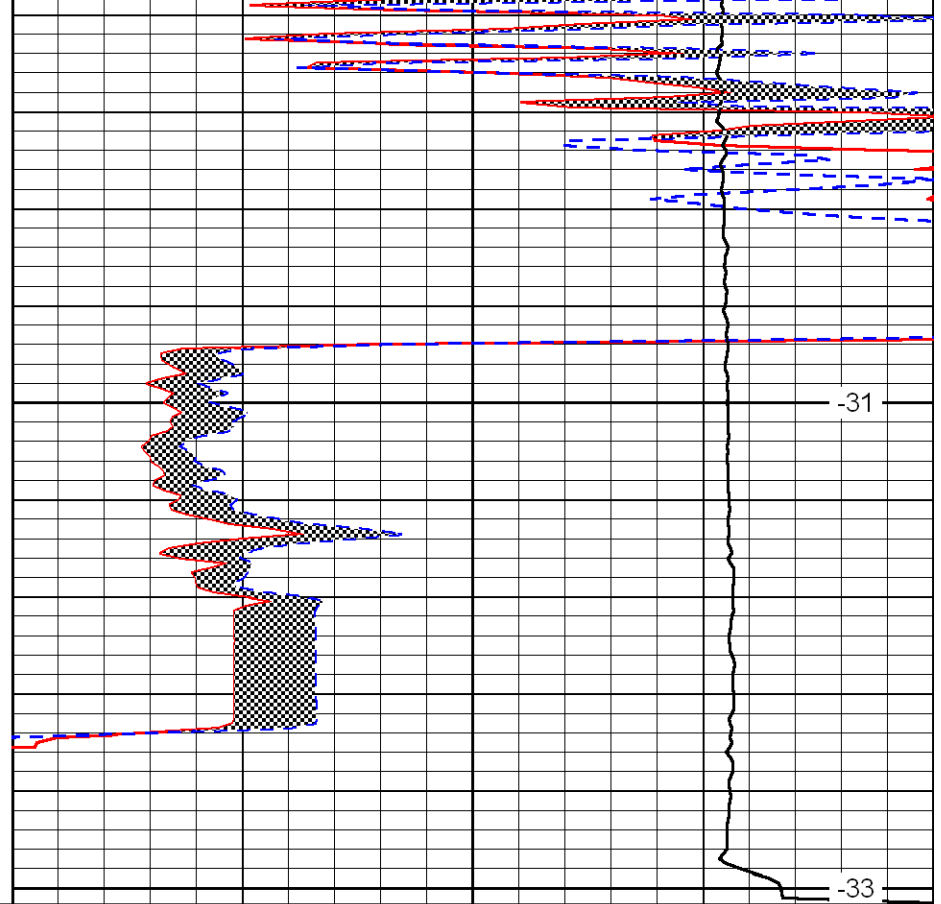
-30



0	Gamma Ray	150
6	MCAL (GAPI)	16
2.875	Mud Cake (GAPI)	7.875
-200	SP	0

4600

4650



-31

-33

0	Micro Inverse 1 X 1	40
0	Micro Normal 2''	40
10000	Line Weight	0

LSPD