



DIGITAL LOG (785) 625-3858

Dual Compensated Porosity Log

API No. 15-101-22,363-00-00

Company **Credo Petroleum Corporation**
 Well **Ruby #1-35**
 Field **Lohoff East**
 County **Lane** State **Kansas**

Location **735' FNL / 535' FWL**

Sec: **35** Twp: **16S** Rge: **29W**

Other Services
 DIL
 MEL/BHCS

Permanent Datum **Ground Level** Elevation **2801**
 Log Measured From **Kelly Bushing** 5 Ft. Above Perm. Datum
 Drilling Measured From **Kelly Bushing**

K.B. 2806
 D.F. G.L. 2801

Date	4/14/2012	
Run Number	One	
Type Log	CNL / CDL	
Depth Driller	4644	
Depth Logger	4646	
Bottom Logged Interval	4625	
Top Logged Interval	3500	
Type Fluid In Hole	Chemical	
Salinity, PPM CL	2000	
Density	9.3	
Level	Full	
Max. Rec. Temp. F	122	
Operating Rig Time	5 Hours	
Equipment -- Location	15 Hays	
Recorded By	R. Barnhart	
Witnessed By	Bruce Ard	

Borehole Record		Casing Record	
Run No	Bit	From	To
One	12.25	00	255
Two	7.875	255	TD

<<< Fold Here >>>

All interpretations are opinions based on inferences from electrical or other measurements and we cannot and do not guarantee the accuracy or correctness of any interpretation, and we shall not, except in the case of gross or willful negligence on our part, be liable or responsible for any loss, costs, damages, or expenses incurred or sustained by anyone resulting from any interpretation made by any of our officers, agents or employees. These interpretations are also subject to our general terms and conditions set out in our current Price Schedule.

Comments

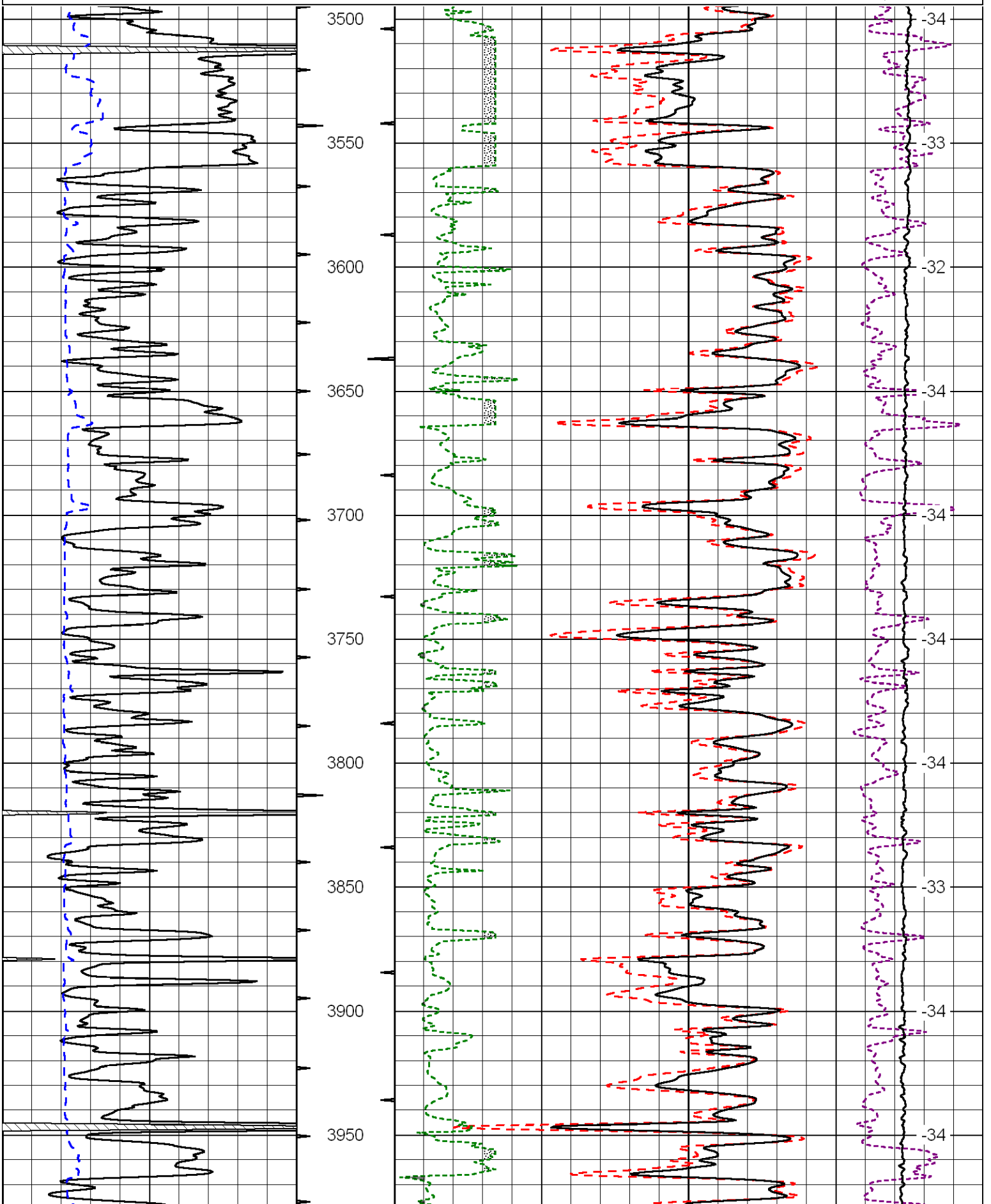
Thank you for using Log-Tech, Inc.
 (785) 625-3858

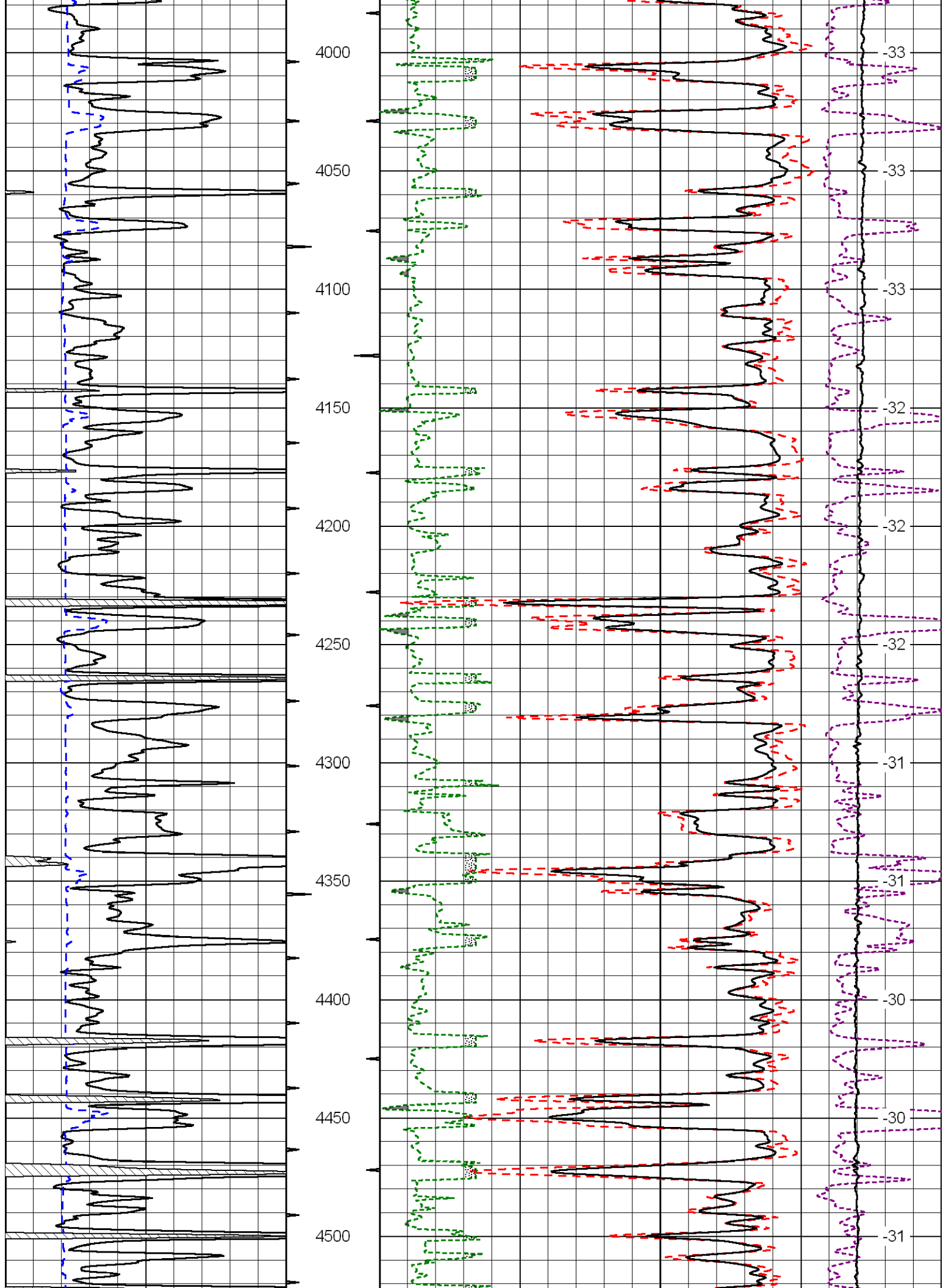
Healy, KS:
 E to Hwy 23, 1N,
 1/16E, S into

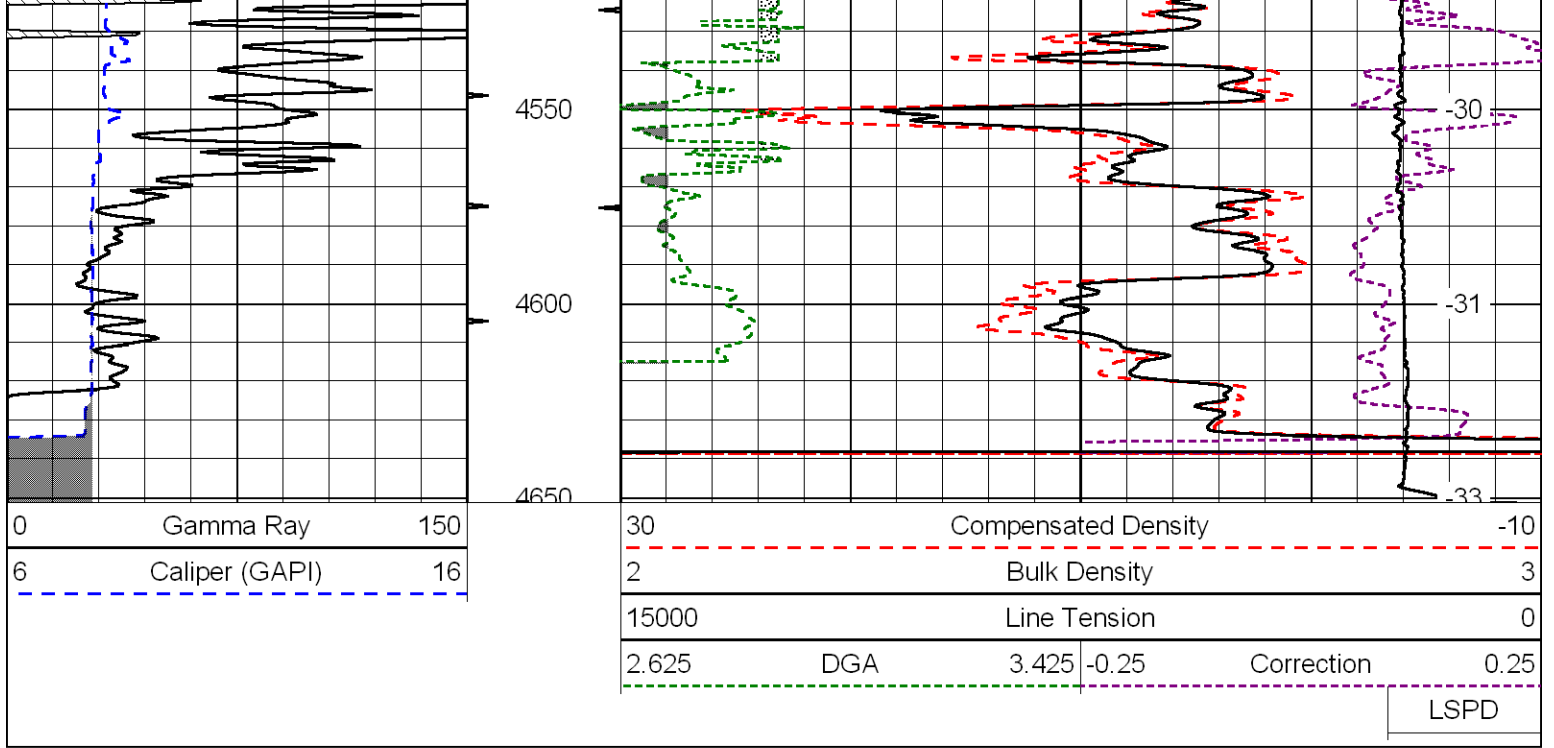
Database File: credohd.db
 Dataset Pathname: dil/crdmain
 Presentation Format: cdl
 Dataset Creation: Sat Apr 14 12:33:42 2012
 Charted by: Depth in Feet scaled 1:600

0	Gamma Ray	150
6	Caliper (GAPI)	16

30	Compensated Density		-10
2	Bulk Density		3
15000	Line Tension		0
2.625	DGA	3.425	-0.25
Correction			0.25
LSPD			







Database File: credohd.db
 Dataset Pathname: dil/crdmain
 Presentation Format: cndlspec
 Dataset Creation: Sat Apr 14 12:33:42 2012
 Charted by: Depth in Feet scaled 1:240

