

LOG-TECH



DIGITAL LOG (785) 625-3858

Dual Induction Log

API No. 15-101-22,363-00-00

Company **Credo Petroleum Corporation**
 Well **Ruby #1-35**
 Field **Lohoff East**
 County **Lane** State **Kansas**

Location **735' FNL / 535' FWL**

Sec: **35** Twp: **16S** Rge: **29W**

Other Services
 CNL/CDL
 MEL/BHCS

Permanent Datum	Ground Level	Elevation 2801
Log Measured From	Kelly Bushing	5 Ft. Above Perm. Datum
Drilling Measured From	Kelly Bushing	K.B. 2806 D.F. G.L. 2801
Date	4/14/2012	
Run Number	One	
Depth Driller	4644	
Depth Logger	4646	
Bottom Logged Interval	4645	
Top Log Interval	250	
Casing Driller	8.625 @ 255	
Casing Logger	255	
Bit Size	7.875	
Type Fluid in Hole	Chemical	
Salinity, ppm CL	2000	
Density / Viscosity	9.3	55
pH / Fluid Loss	10.0	6.8
Source of Sample	Flowline	
Rm @ Meas. Temp	1.00 @ 67	
Rmf @ Meas. Temp	0.75 @ 67	
Rmc @ Meas. Temp	1.35 @ 67	
Source of Rmf / Rmc	Charts	
Rm @ BHT	0.55 @ 122	
Operating Rig Time	5 Hours	
Max Rec. Temp. F	122	
Equipment Number	15	
Location	Hays	
Recorded By	R. Barnhart	
Witnessed By	Bruce Ard	

<<< Fold Here >>>

All interpretations are opinions based on inferences from electrical or other measurements and we cannot and do not guarantee the accuracy or correctness of any interpretation, and we shall not, except in the case of gross or willful negligence on our part, be liable or responsible for any loss, costs, damages, or expenses incurred or sustained by anyone resulting from any interpretation made by any of our officers, agents or employees. These interpretations are also subject to our general terms and conditions set out in our current Price Schedule.

Comments

Thank you for using Log-Tech, Inc.
 (785) 625-3858

Healy, KS:
 E to Hwy 23, 1N,
 1/16E, S into

Database File: credohd.db
 Dataset Pathname: dil/crdmain
 Presentation Format: dil2in
 Dataset Creation: Sat Apr 14 12:33:42 2012
 Charted by: Depth in Feet scaled 1:600

0	Gamma Ray	150
-200	SP	0

0	Shallow Resistivity	50
0	Deep Resistivity	50

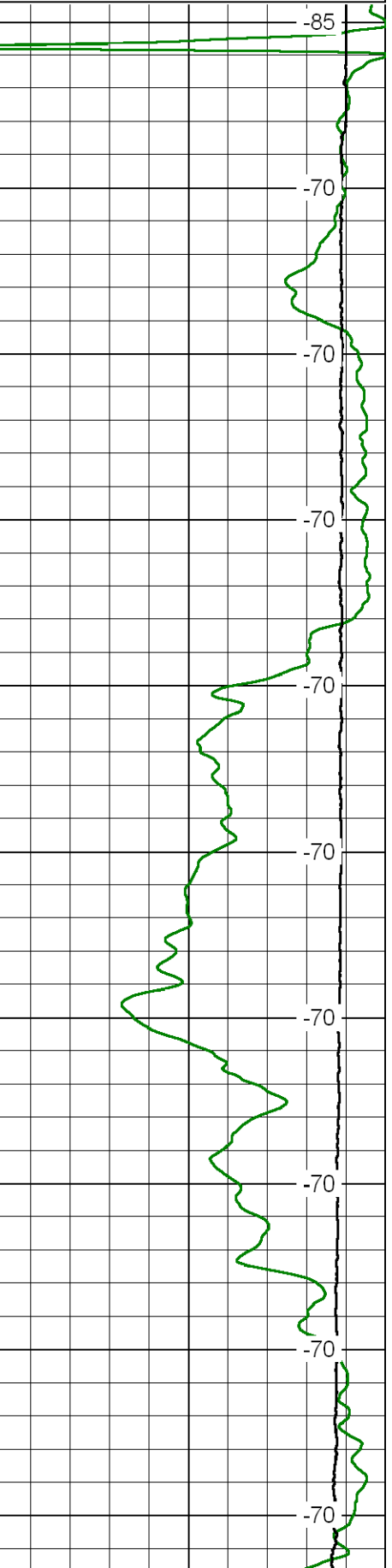
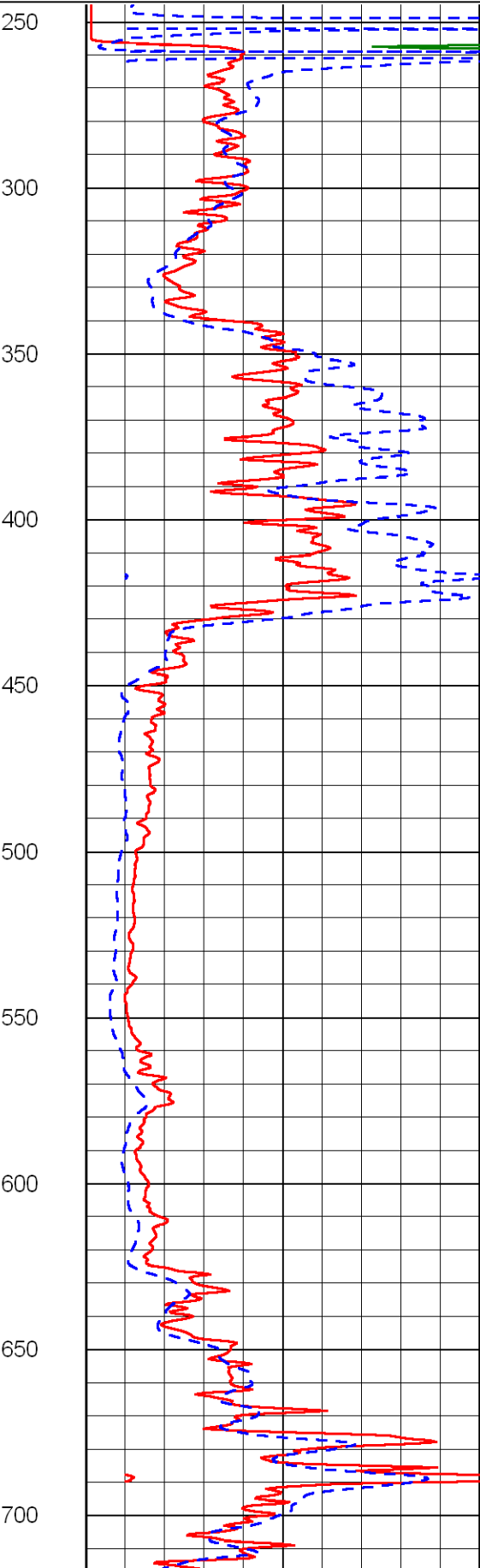
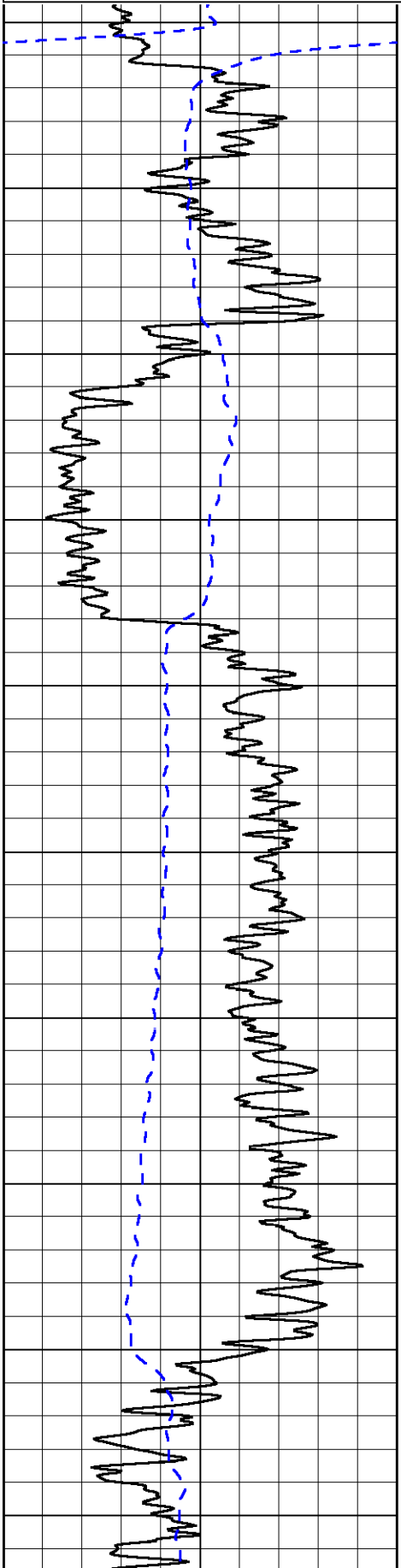
LSPD

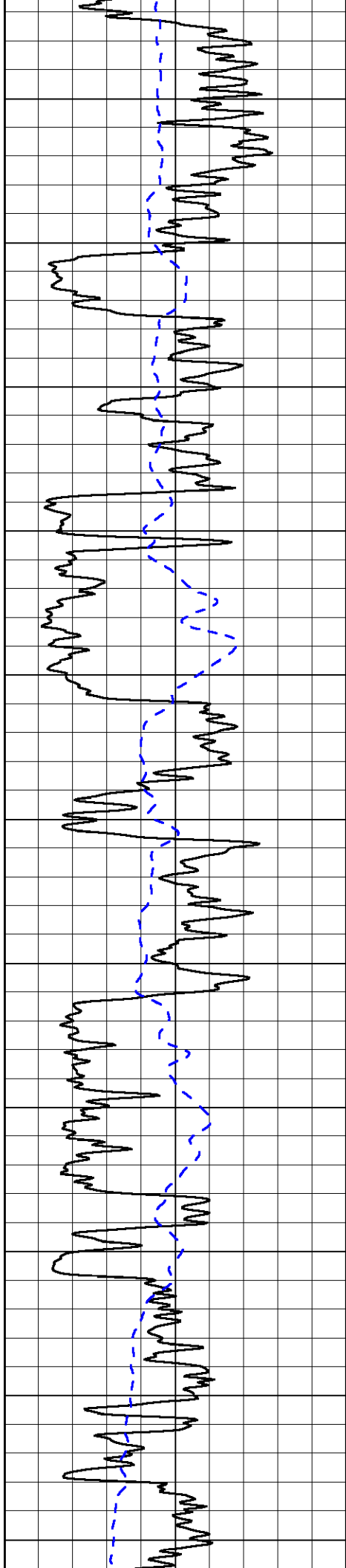
1000	Conductivity	0
------	--------------	---

15000	Line Tension	0
-------	--------------	---

50	Shallow Resistivity	500
----	---------------------	-----

50	Deep Resistivity	500
----	------------------	-----





750

800

850

900

950

1000

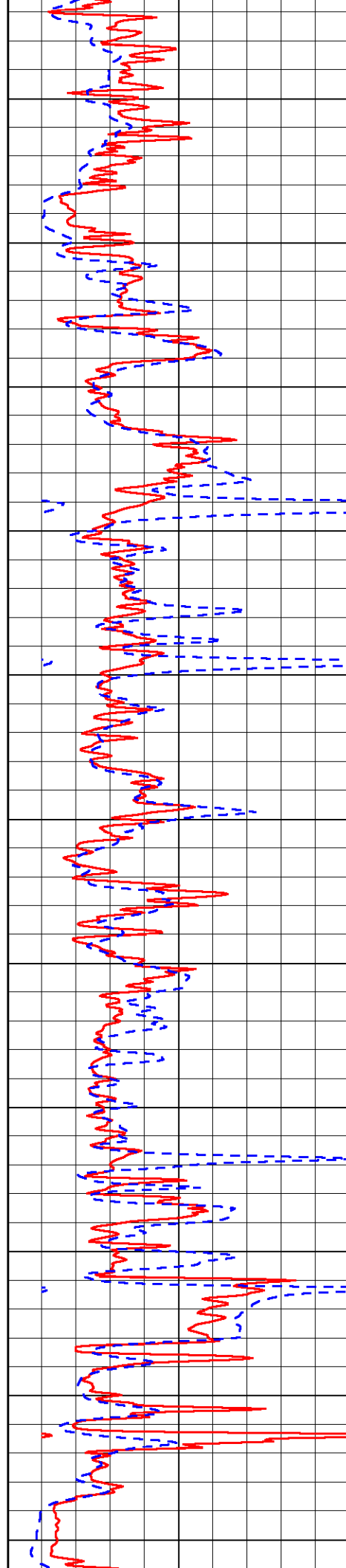
1050

1100

1150

1200

1250



-70

-68

-68

-68

-68

-68

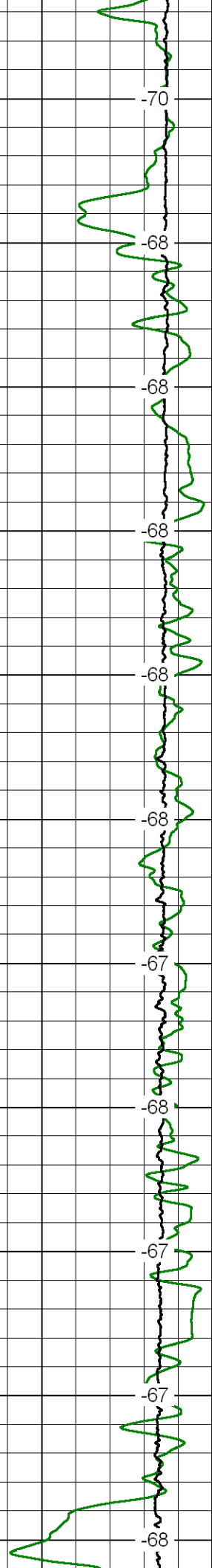
-67

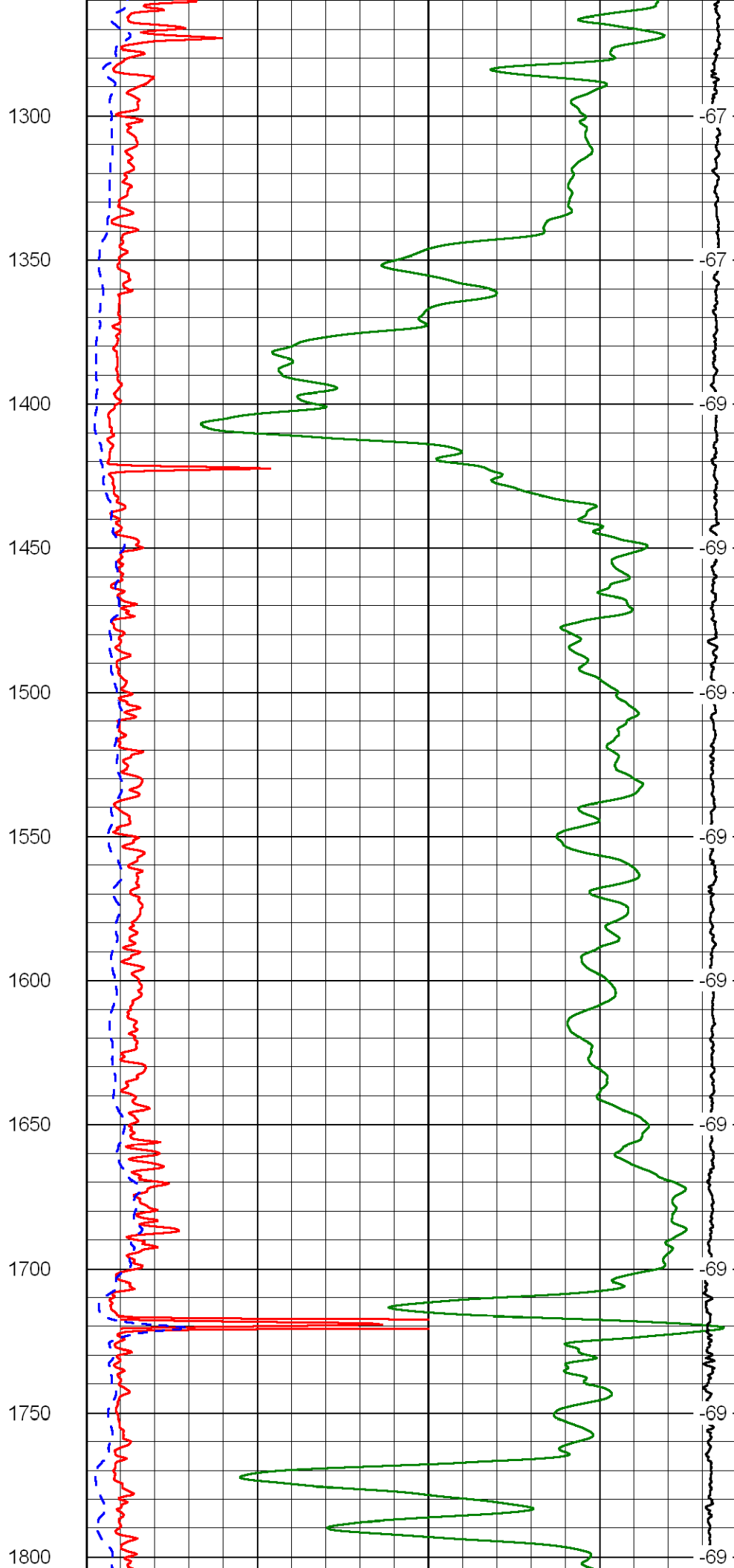
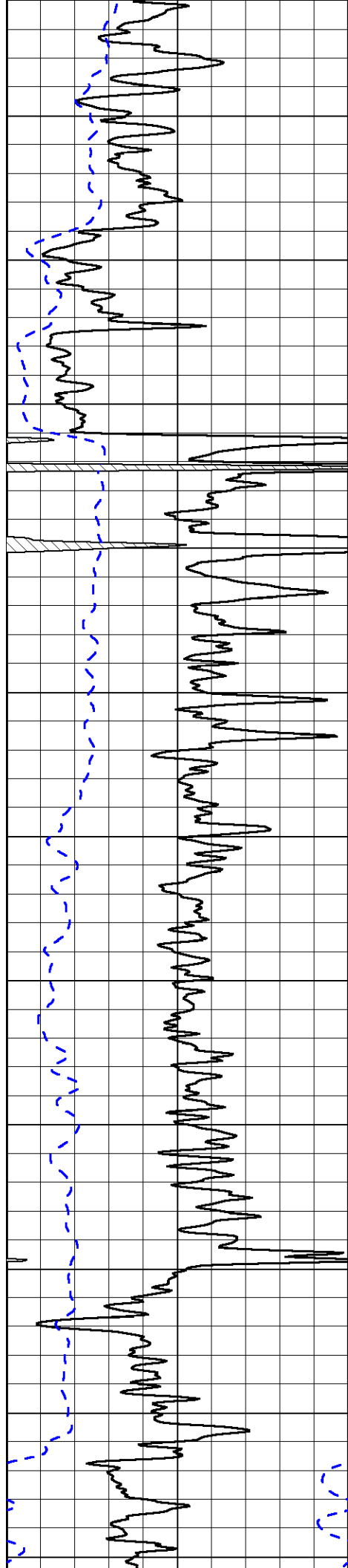
-68

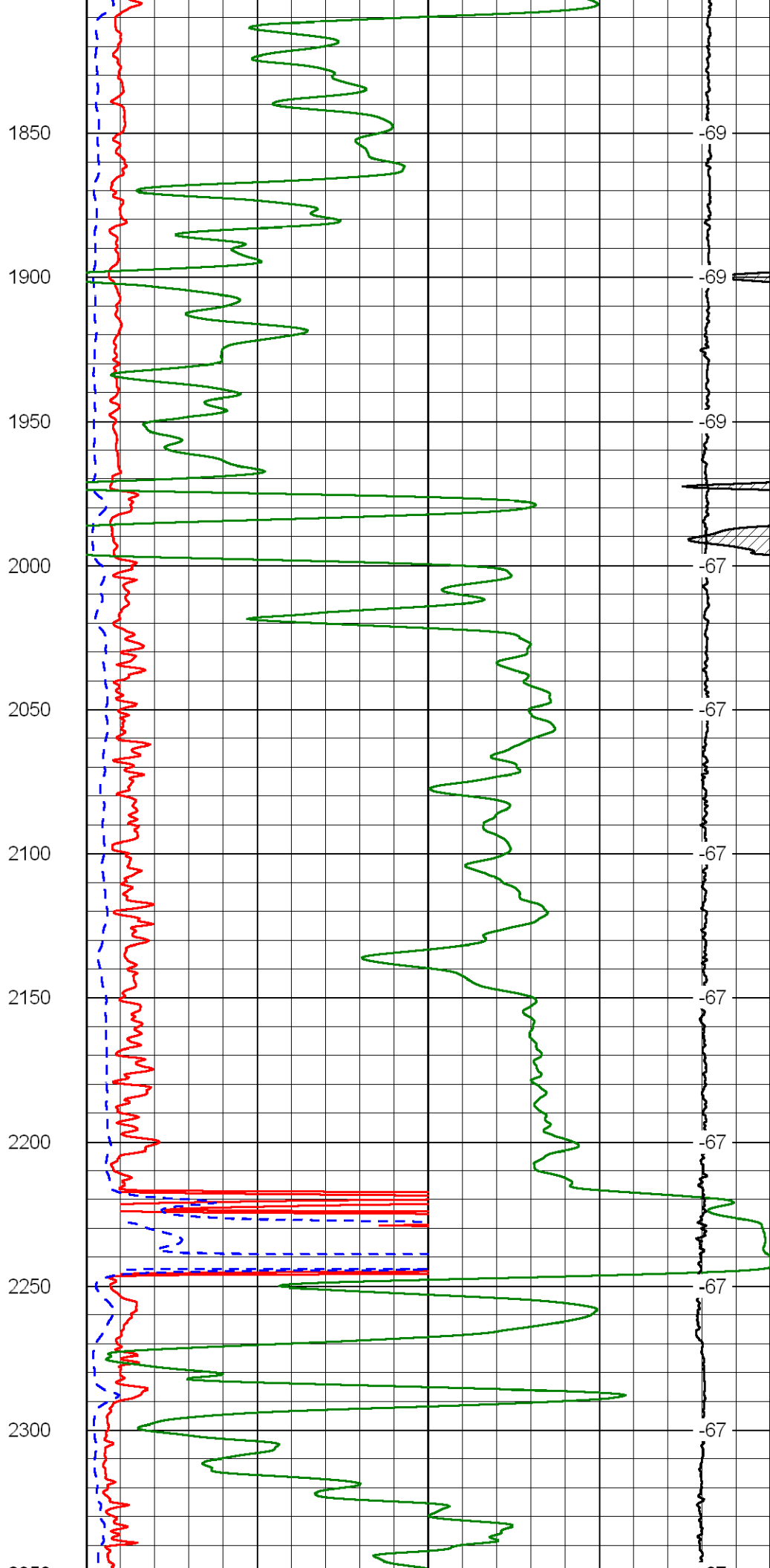
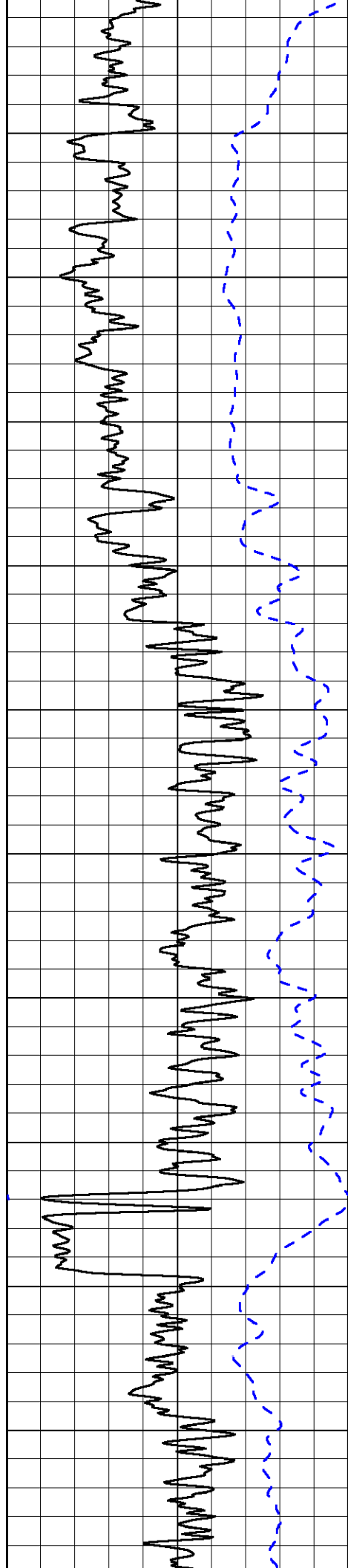
-67

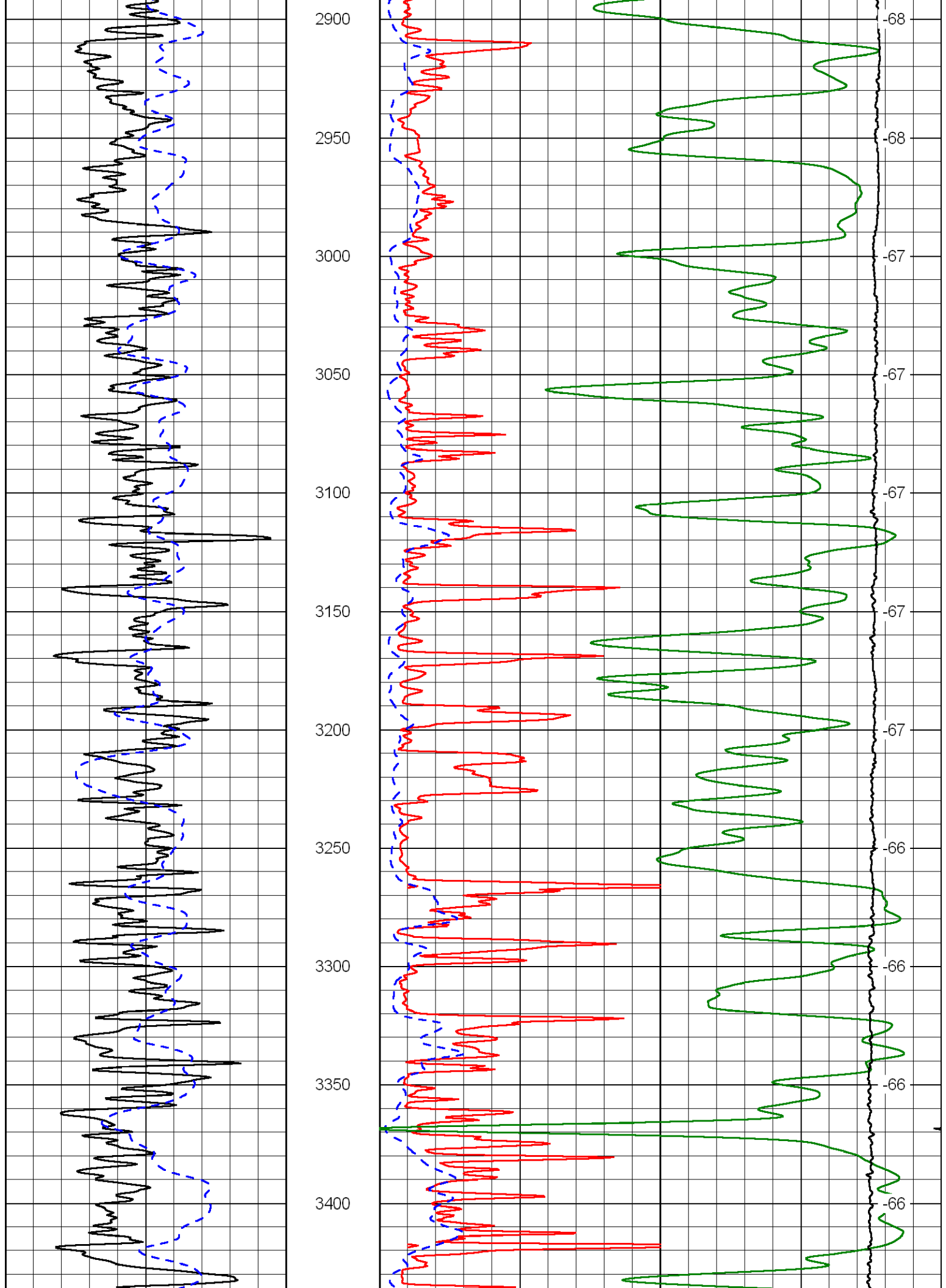
-67

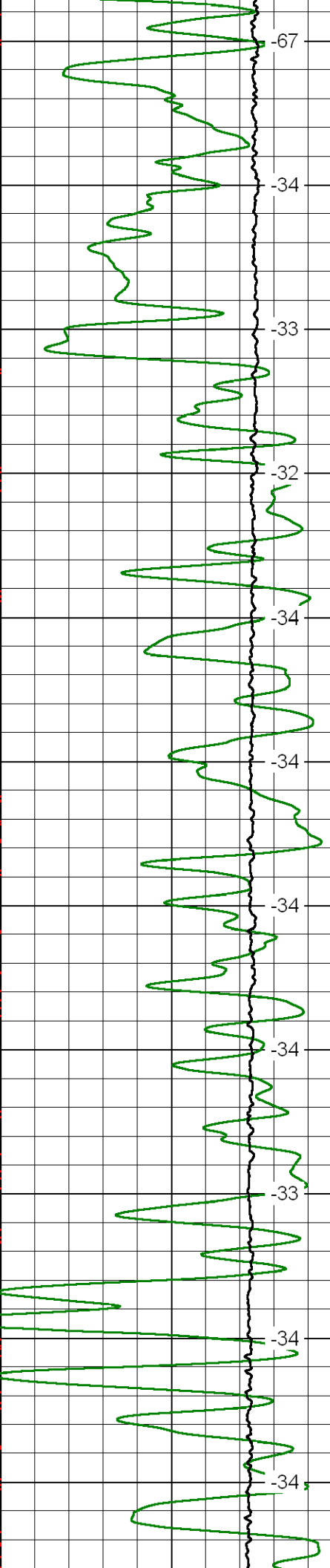
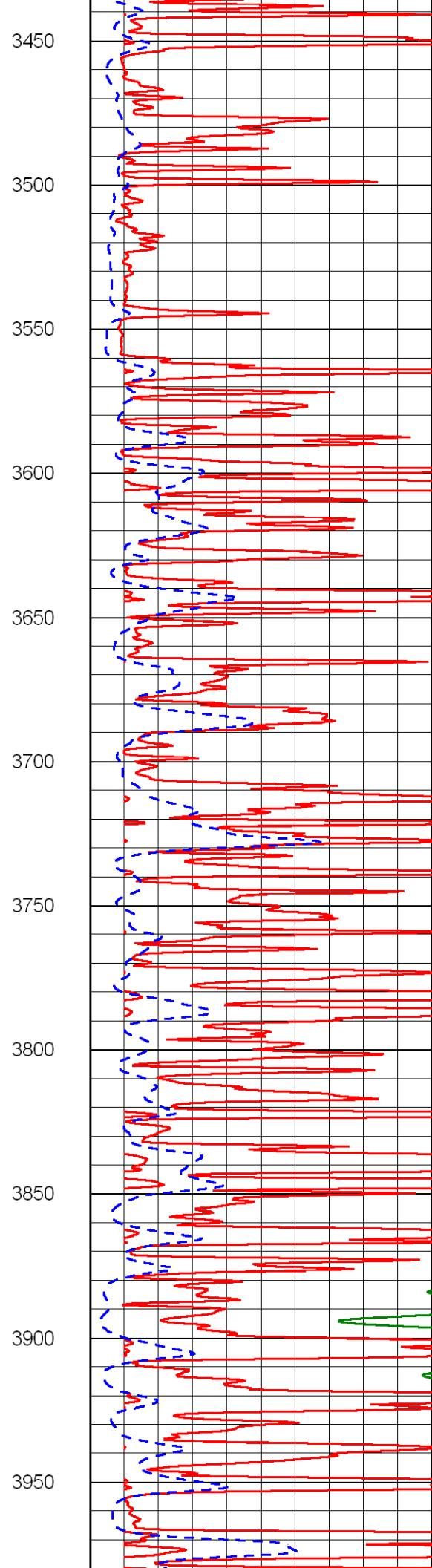
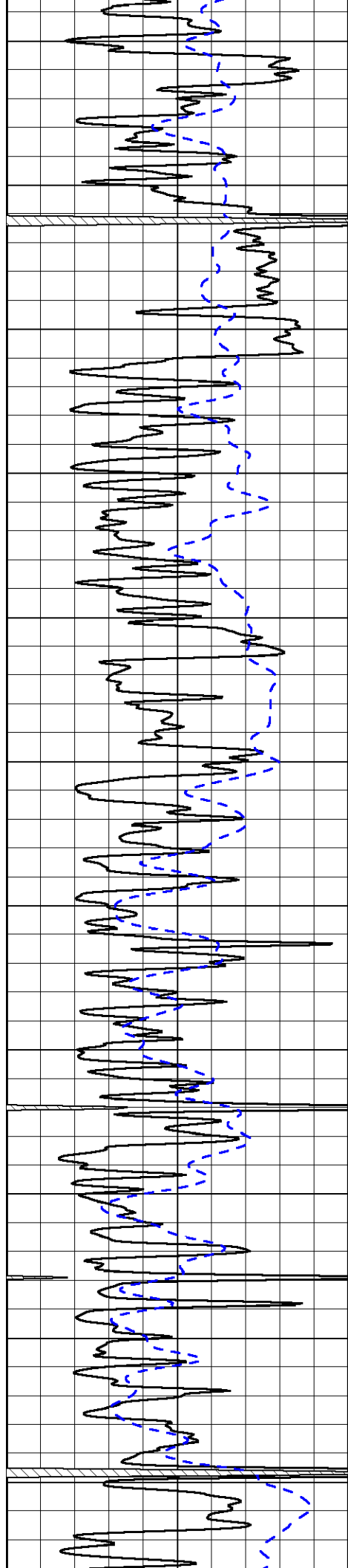
-68

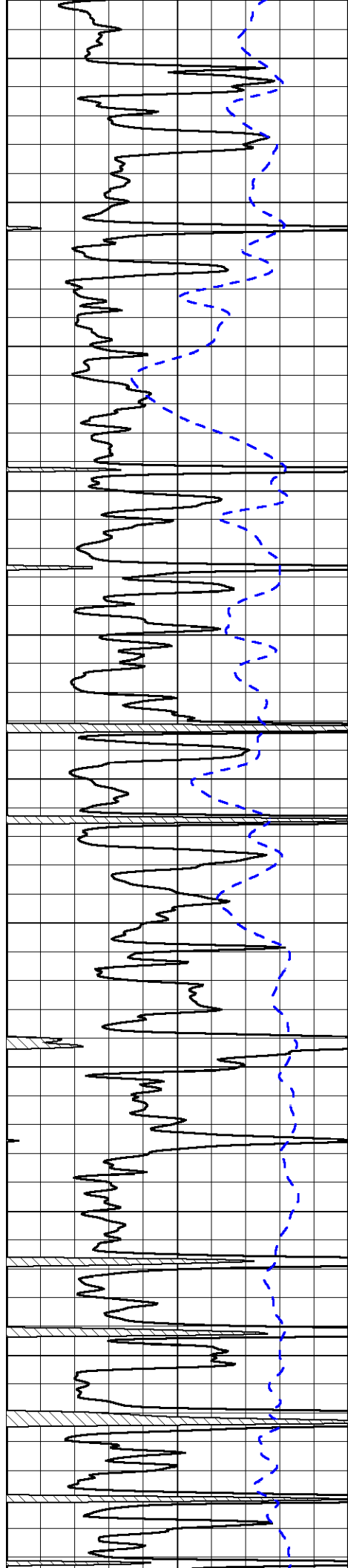












4000

4050

4100

4150

4200

4250

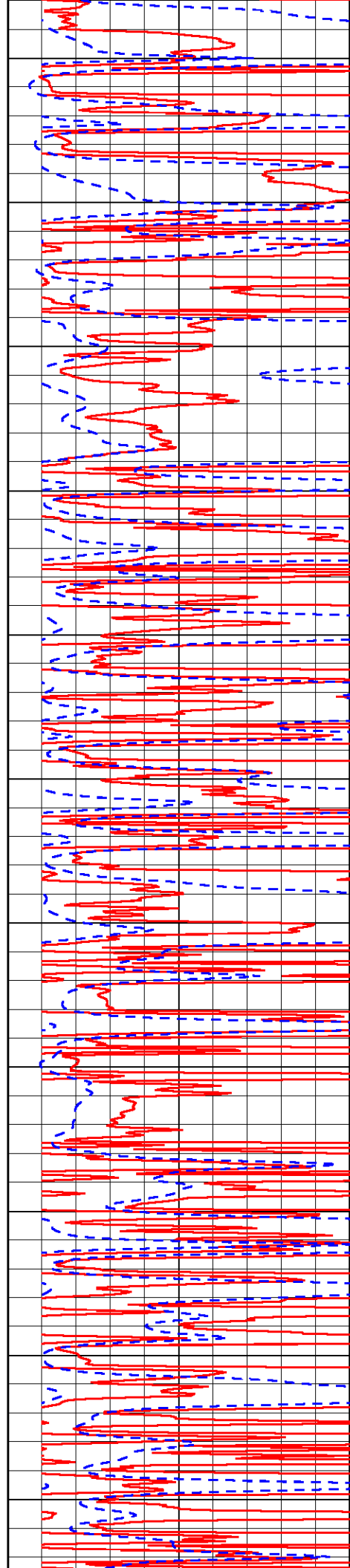
4300

4350

4400

4450

4500



-33

-33

-33

-32

-32

-32

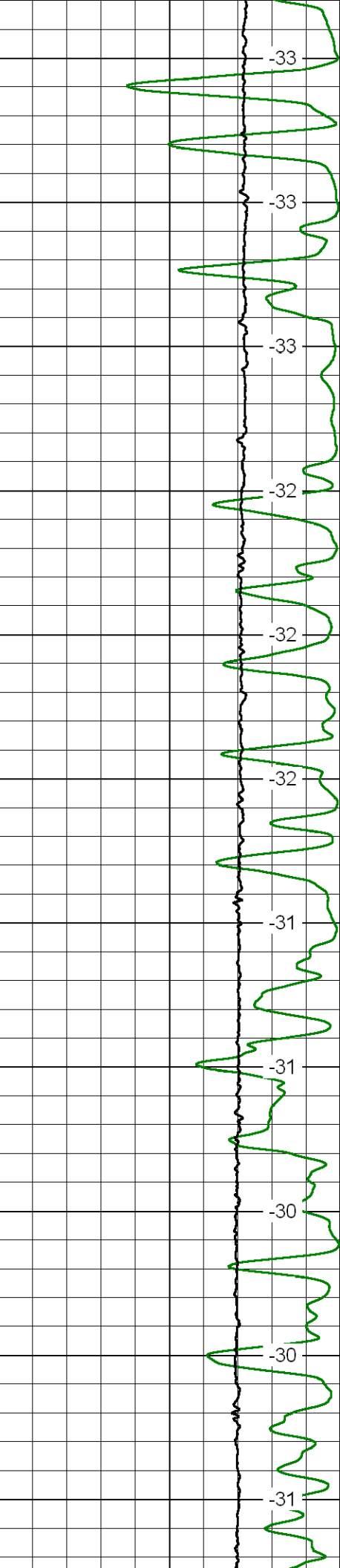
-31

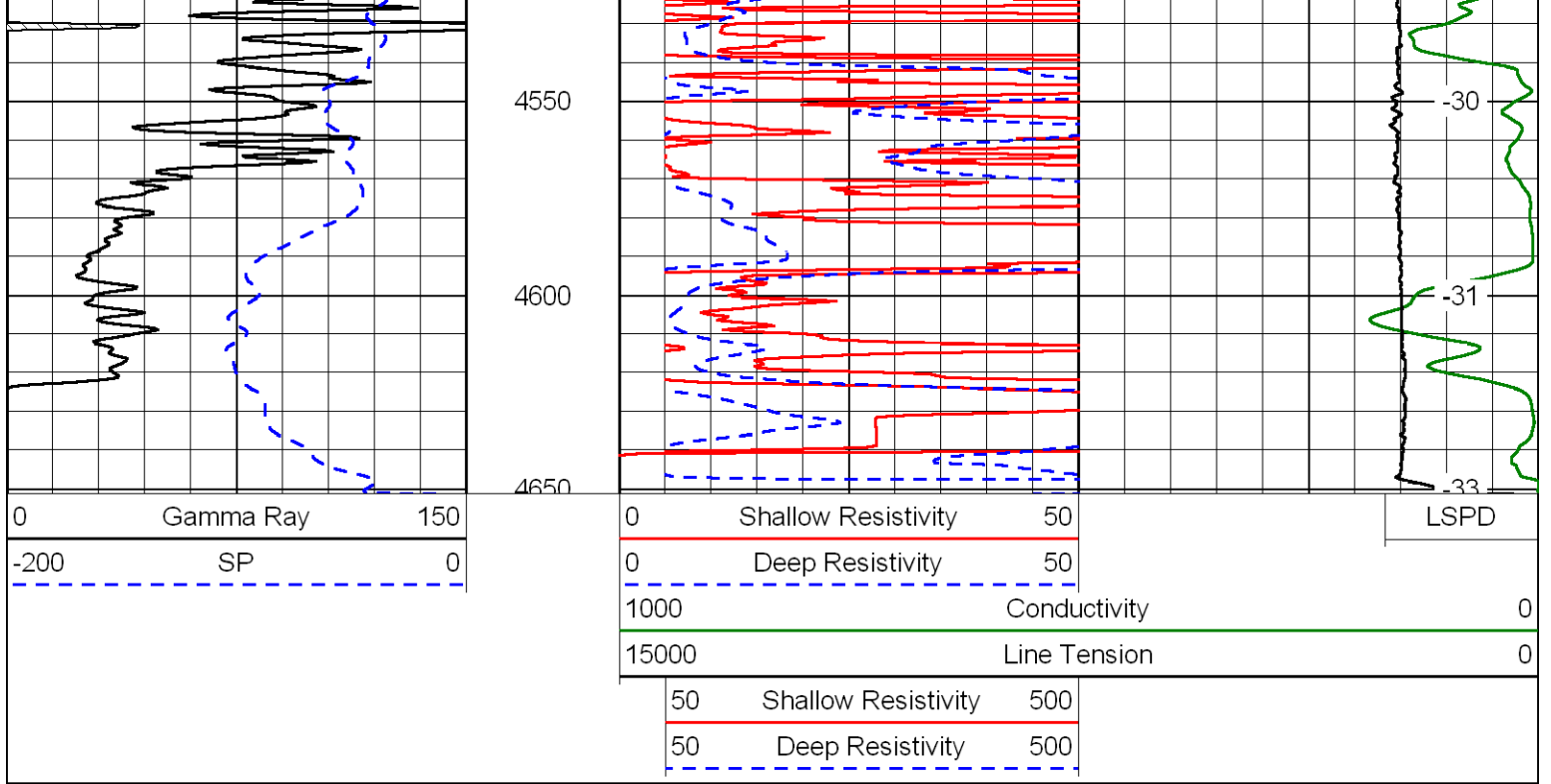
-31

-30

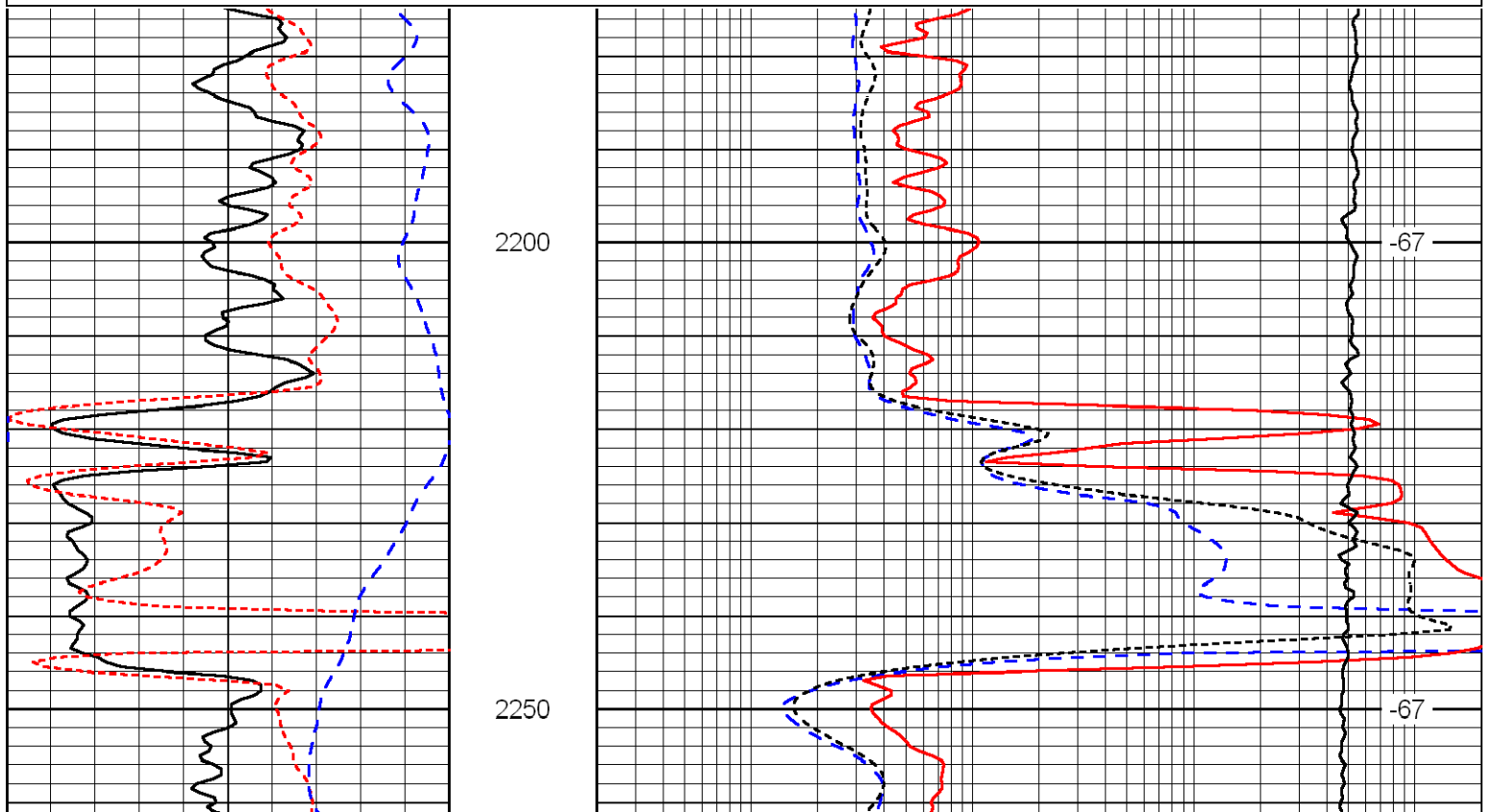
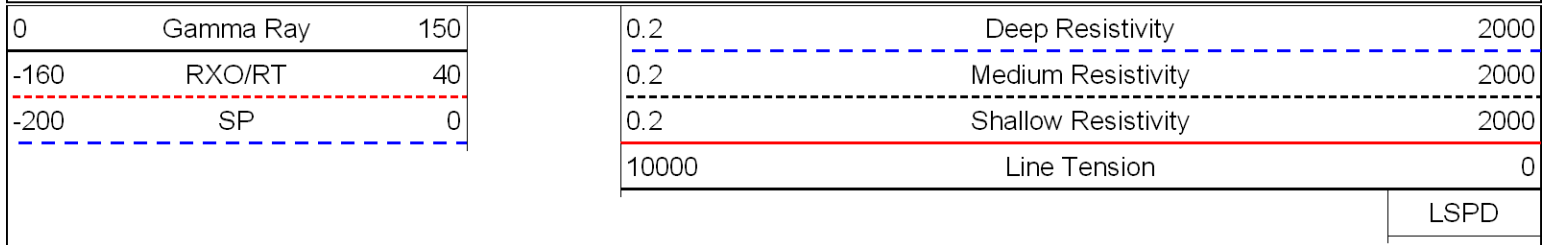
-30

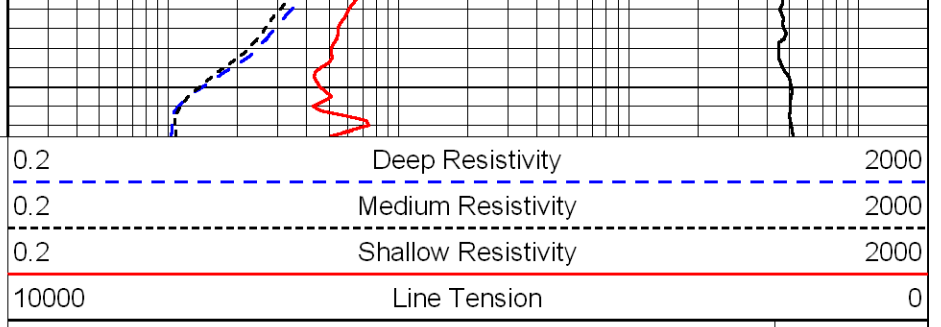
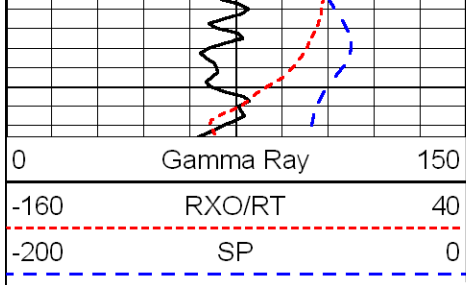
-31





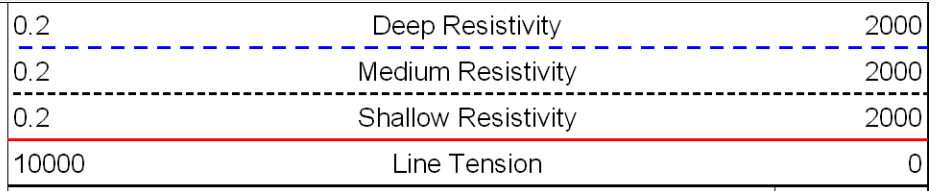
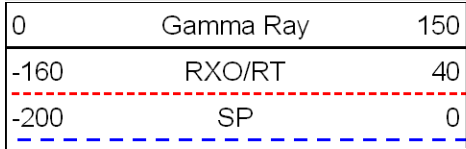
Database File: credohd.db
 Dataset Pathname: dil/crdmain
 Presentation Format: dil
 Dataset Creation: Sat Apr 14 12:33:42 2012
 Charted by: Depth in Feet scaled 1:240



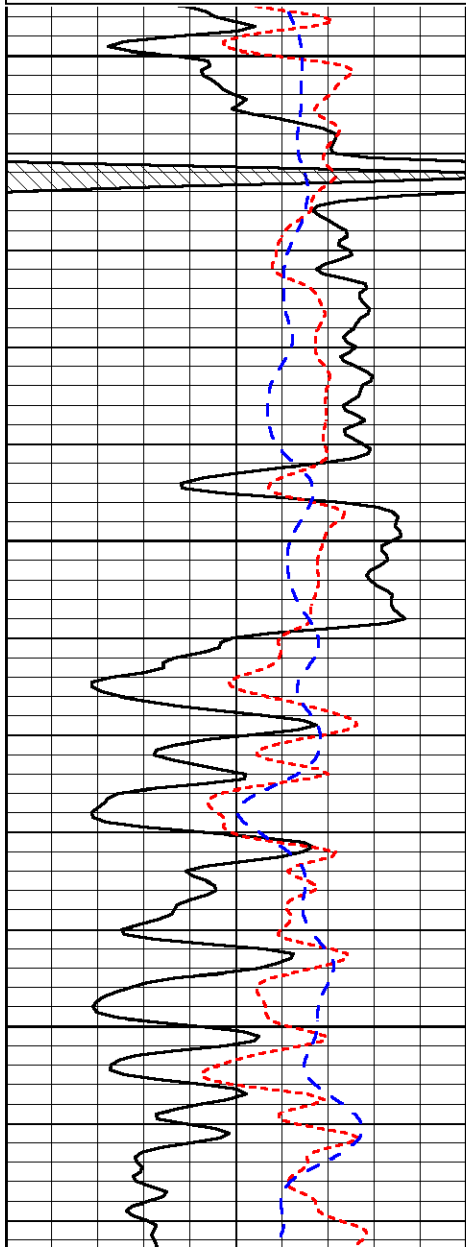


LSPD

Database File: credohd.db
 Dataset Pathname: dil/crdmain
 Presentation Format: dil
 Dataset Creation: Sat Apr 14 12:33:42 2012
 Charted by: Depth in Feet scaled 1:240



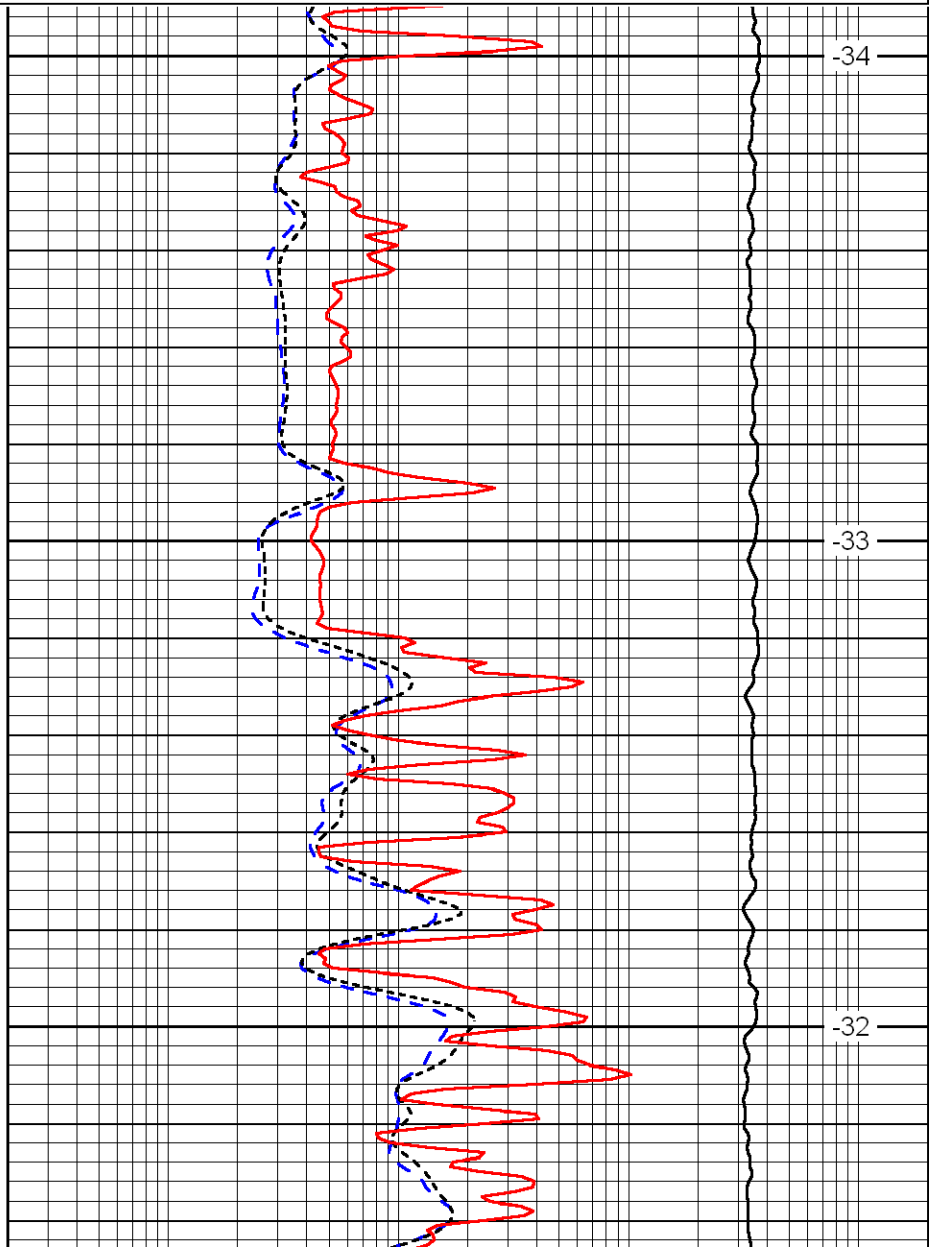
LSPD



3500

3550

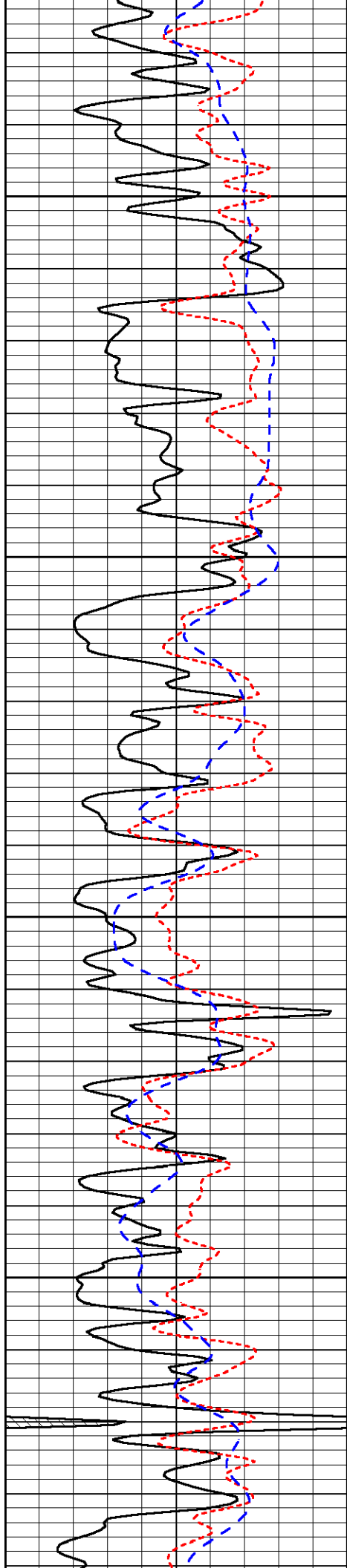
3600



-34

-33

-32

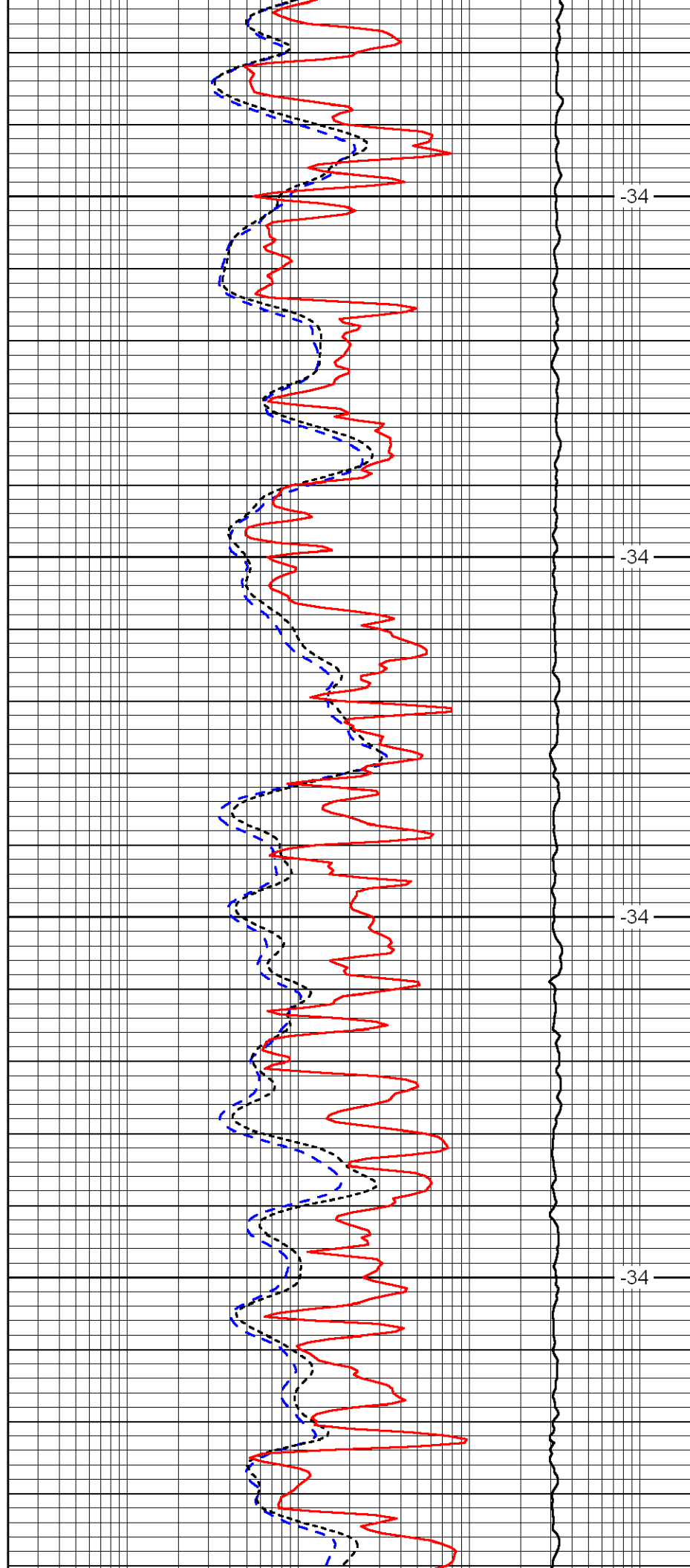


3650

3700

3750

3800

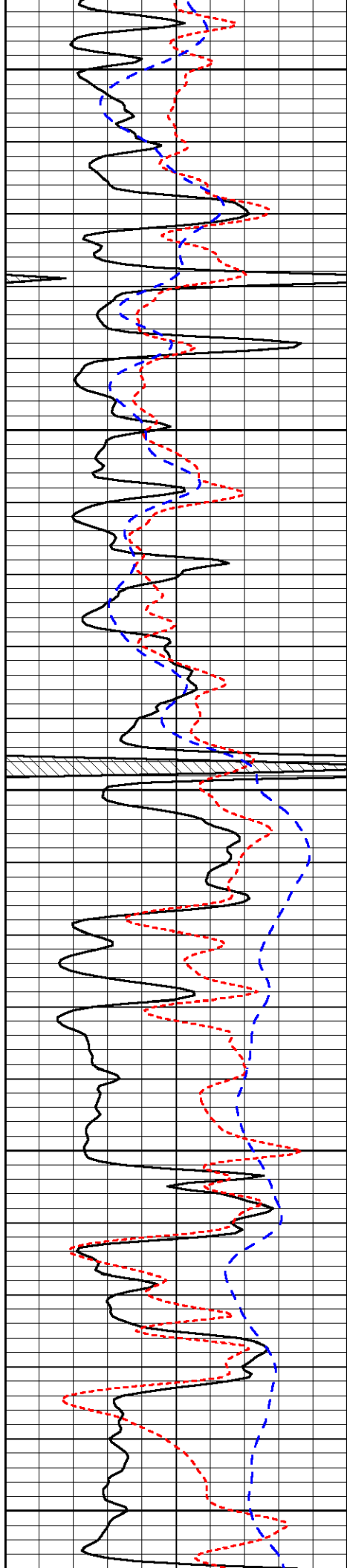


-34

-34

-34

-34



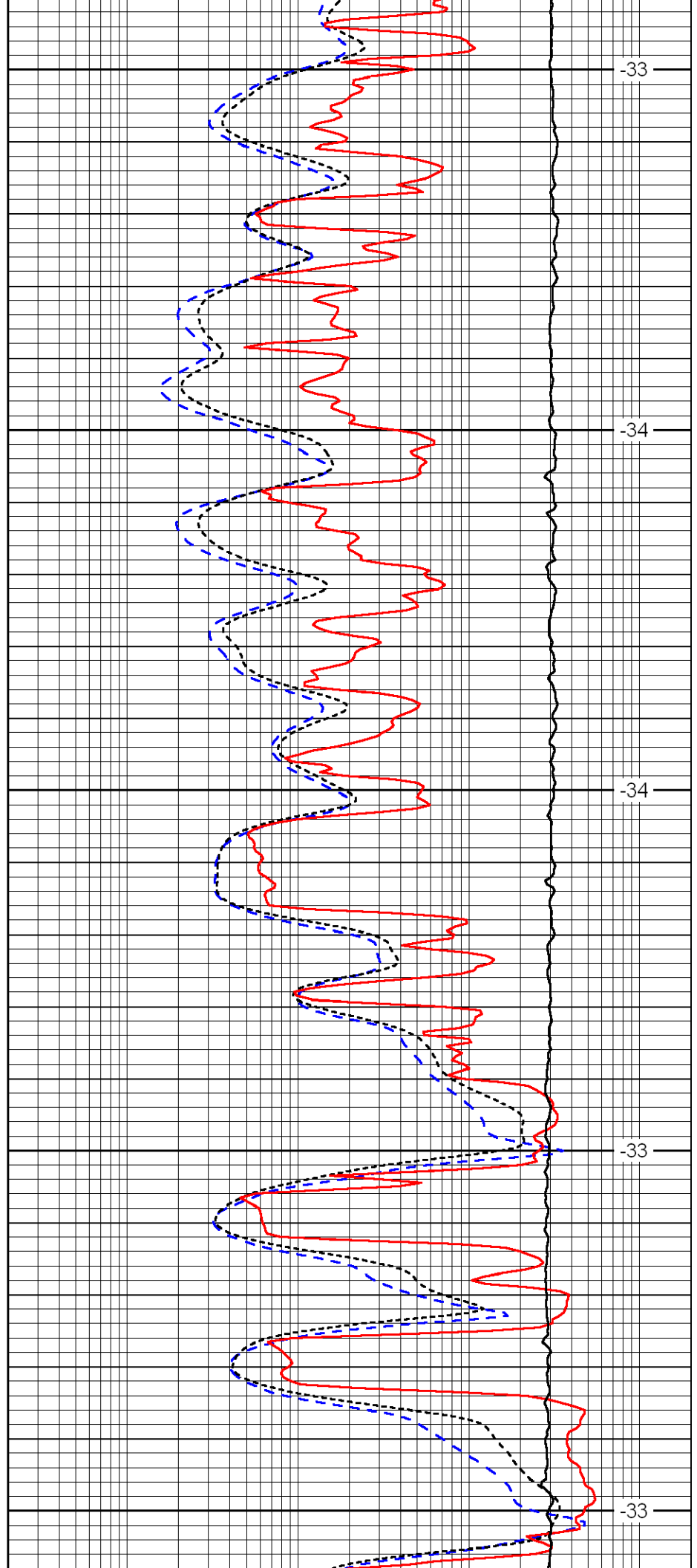
3850

3900

3950

4000

4050



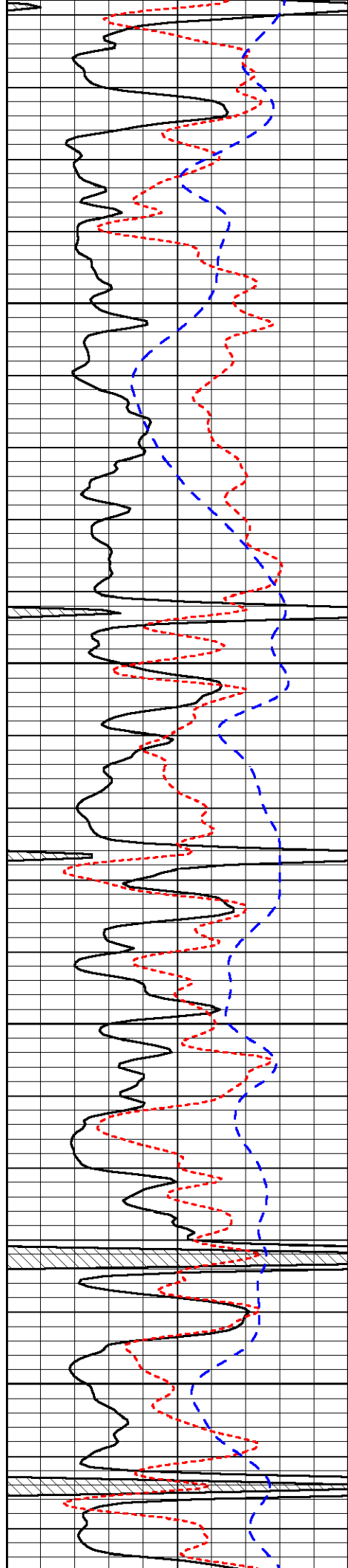
-33

-34

-34

-33

-33

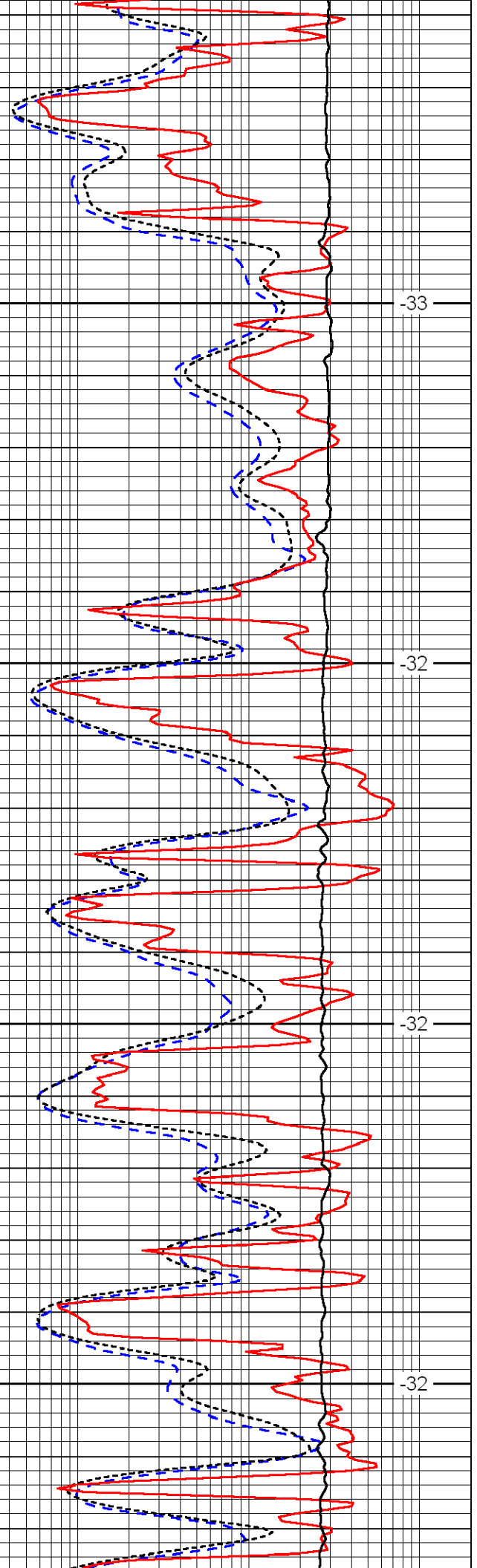


4100

4150

4200

4250

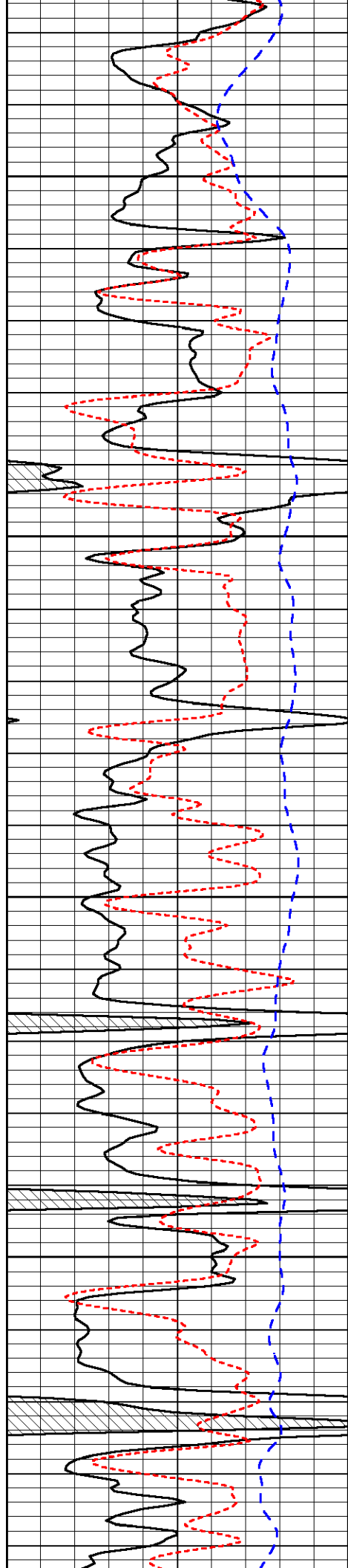


-33

-32

-32

-32

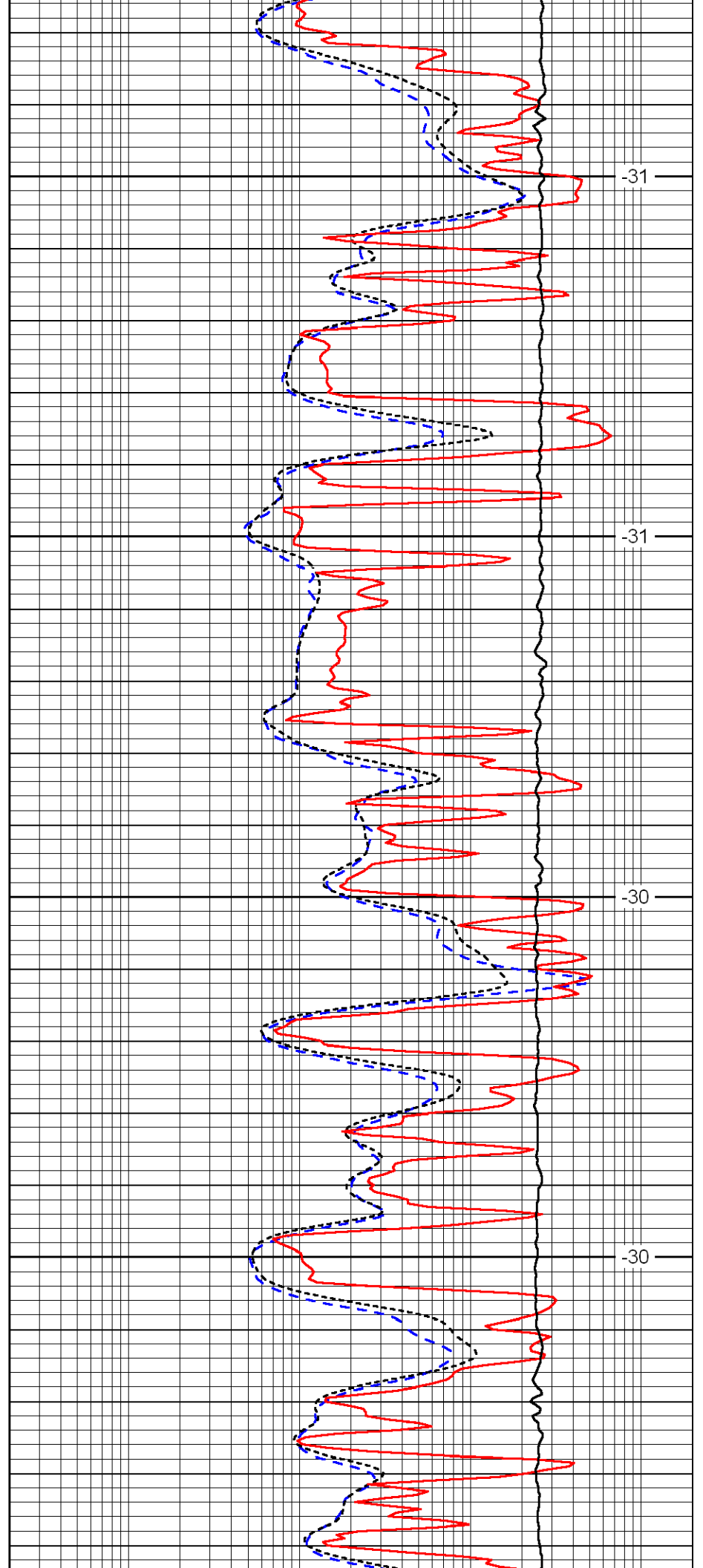


4300

4350

4400

4450

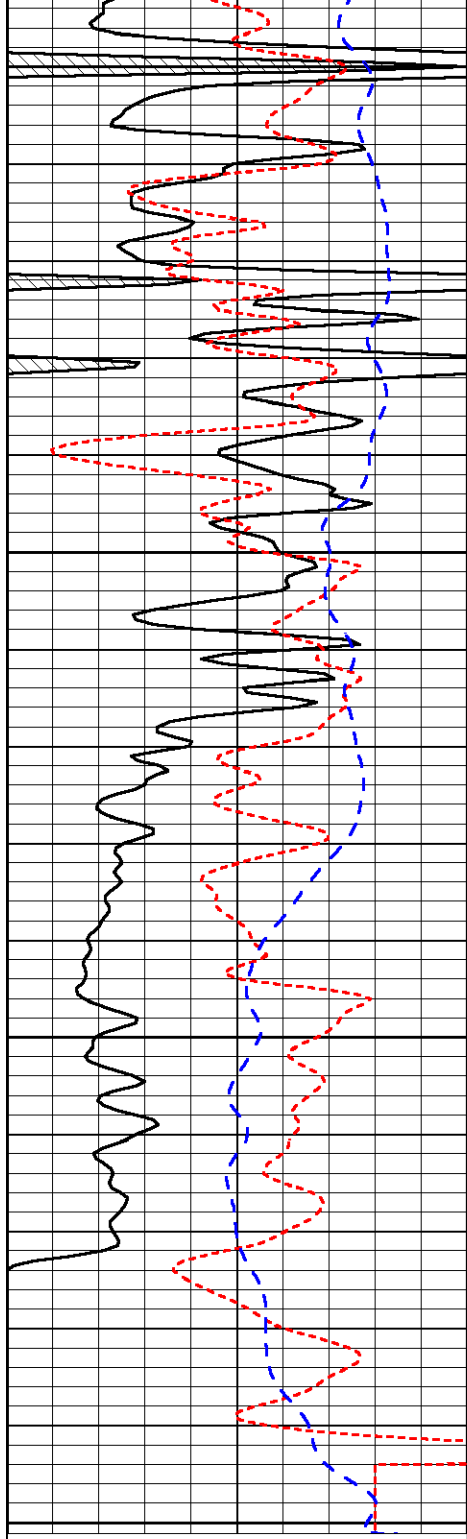


-31

-31

-30

-30



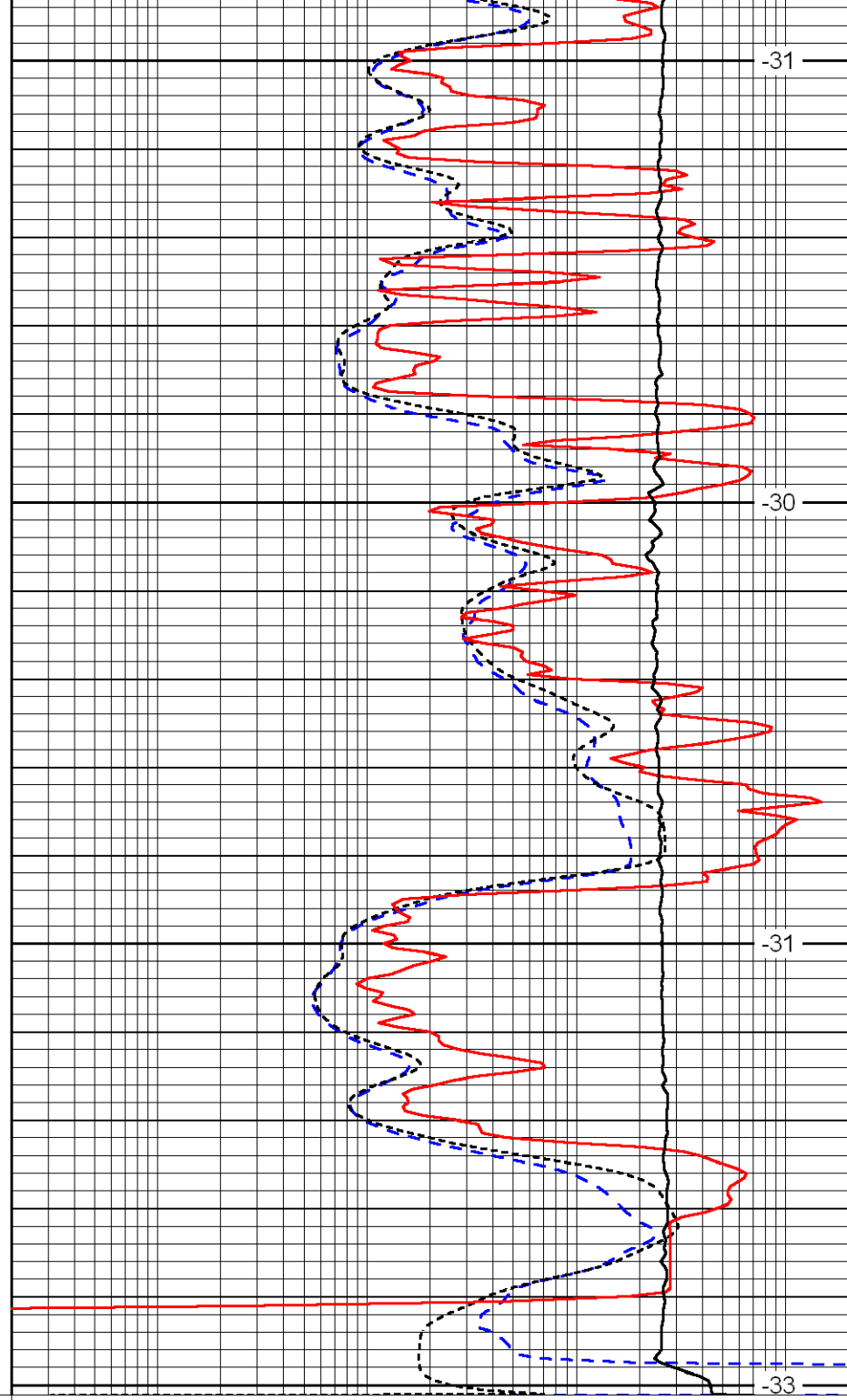
4500

4550

4600

4650

0	Gamma Ray	150
-160	RXO/RT	40
-200	SP	0



-31

-30

-31

-33

0.2	Deep Resistivity	2000
0.2	Medium Resistivity	2000
0.2	Shallow Resistivity	2000
10000	Line Tension	0

LSPD