



DIGITAL LOG (785) 625-3858

Dual Induction Log

15-051-26,273-00-00

API No.

Company TDI, Inc.

Well Haas No. 1

Field Martina East

County Ellis State Kansas

Location 2310' FNL & 400' FEL

Other Services  
CNL/CDL  
MEL

Sec: 24 Twp: 15 S Rge: 19 W

Permanent Datum Ground Level Elevation 1985

Log Measured From Kelly Bushing 10 Ft. Above Perm. Datum

Elevation  
K.B. 1995  
D.F.  
G.L. 1985

Drilling Measured From Kelly Bushing

Date 3/26/2012

Run Number One

Depth Driller 3750

Depth Logger 3750

Bottom Logged Interval 3749

Top Log Interval 1150

Casing Driller 8.625 @ 1172

Casing Logger 1170

Bit Size 7.875

Type Fluid in Hole Chemical

Salinity, ppm CL 3.200

Density / Viscosity 8.9 59

pH / Fluid Loss 11.0 6.2

Source of Sample Flowline

Rm @ Meas. Temp .70 @ 55

Rmf @ Meas. Temp .53 @ 55

Rmc @ Meas. Temp .95 @ 55

Source of Rmf / Rmc Charts

Rm @ BHT .33 @ 116

Operating Rig Time 4 Hours

Max Rec. Temp. F 116

Equipment Number 91

Location Hays

Recorded By K. Bange

Witnessed By Herb Deines

<<< Fold Here >>>

All interpretations are opinions based on inferences from electrical or other measurements and we cannot and do not guarantee the accuracy or correctness of any interpretation, and we shall not, except in the case of gross or willful negligence on our part, be liable or responsible for any loss, costs, damages, or expenses incurred or sustained by anyone resulting from any interpretation made by any of our officers, agents or employees. These interpretations are also subject to our general terms and conditions set out in our current Price Schedule.

Comments

Thank you for using Log-Tech, Inc.  
(785) 625-3858

Antonino, 1 E, 3 1/4 S, W into

Database File: c:\warrior\data\tdi\_haas no. 1\tdi032512hd.db  
 Dataset Pathname: dil\tdistack  
 Presentation Format: dil2in  
 Dataset Creation: Mon Mar 26 02:44:42 2012  
 Charted by: Depth in Feet scaled 1:600

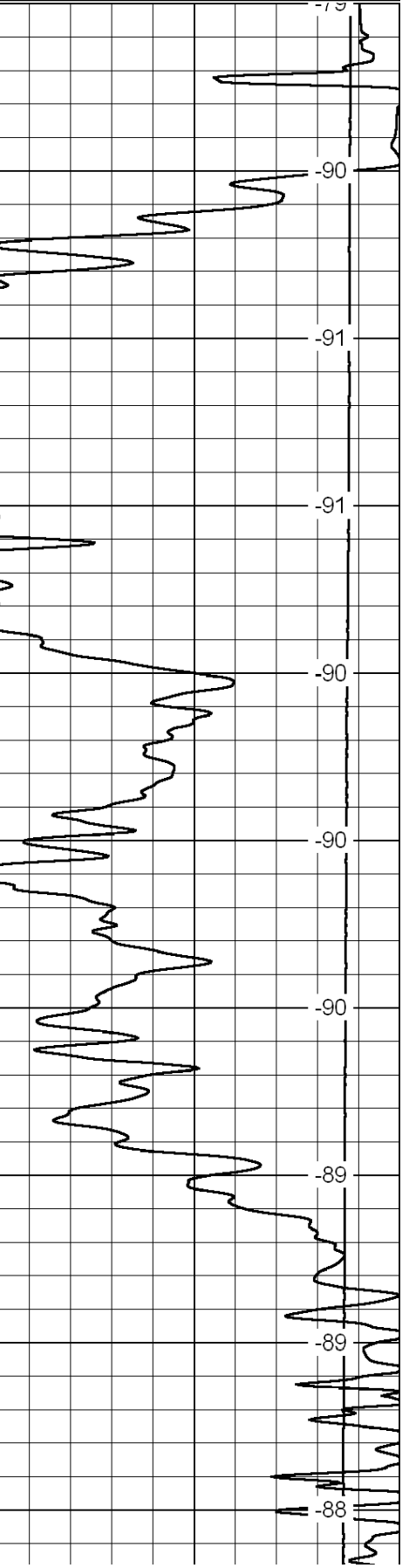
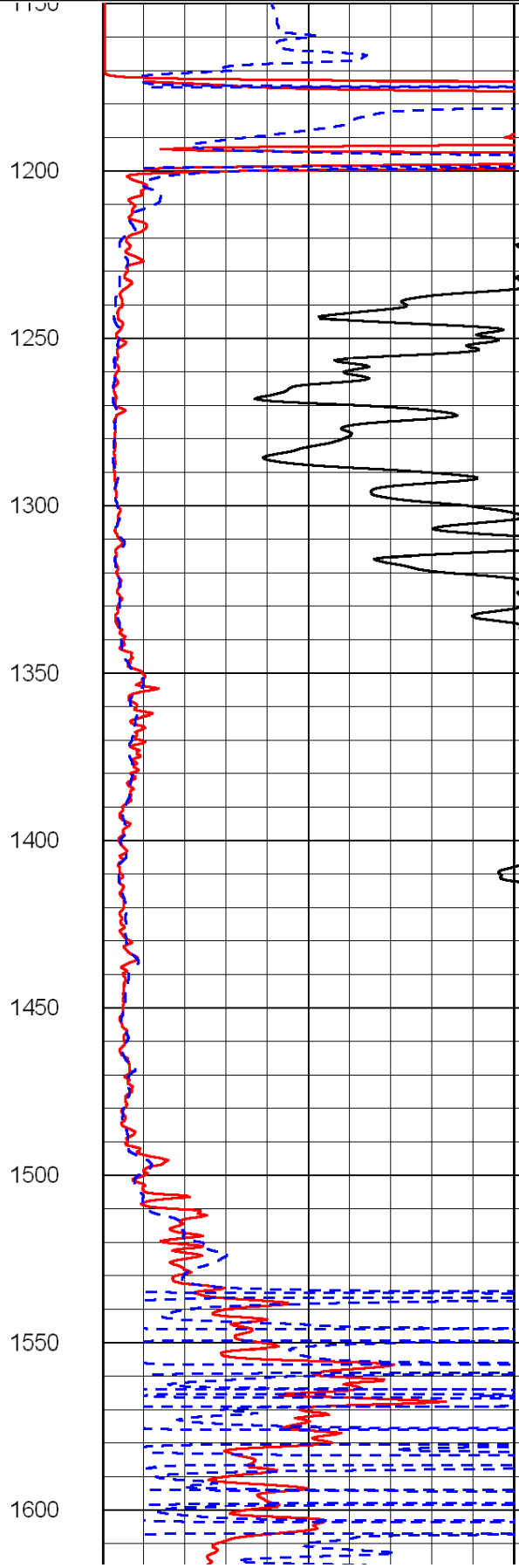
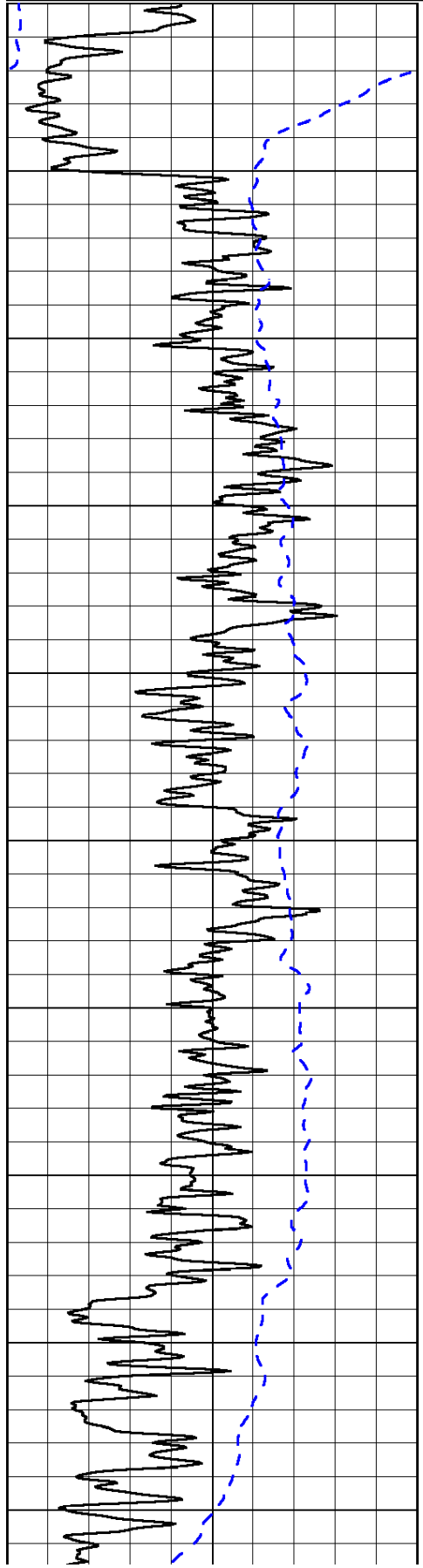
0	Gamma Ray	150
-200	SP (mV)	0

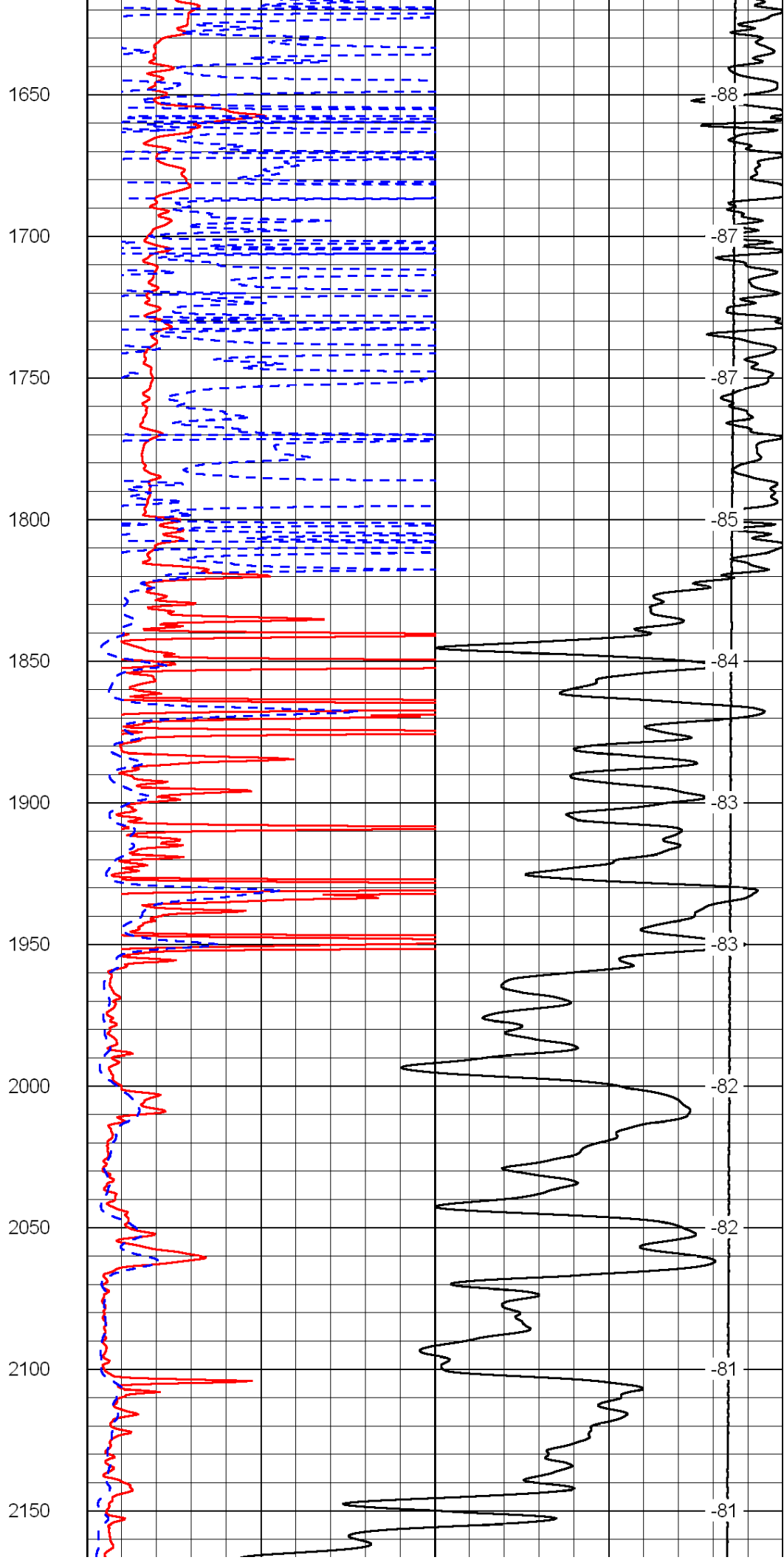
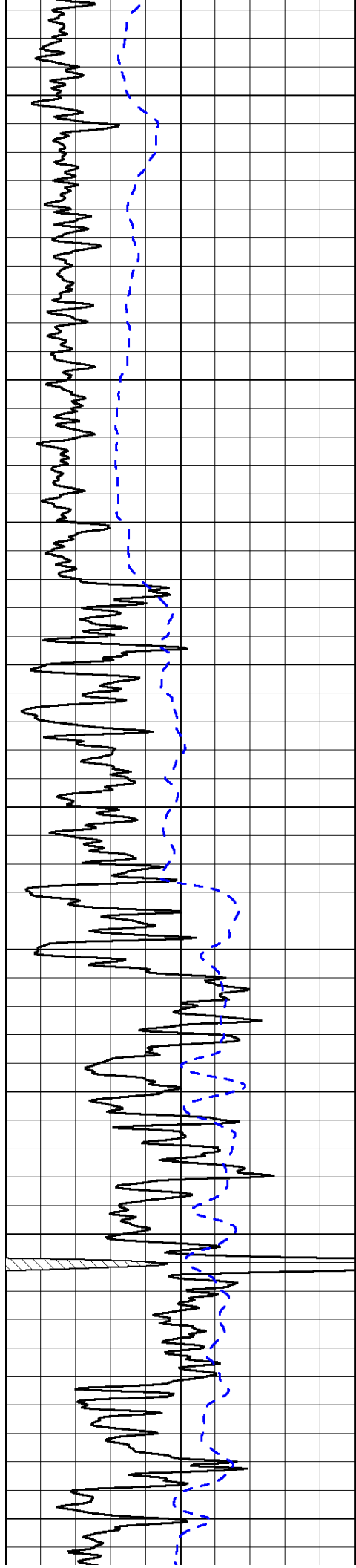
0	Shallow Resistivity	50
0	Deep Resistivity	50

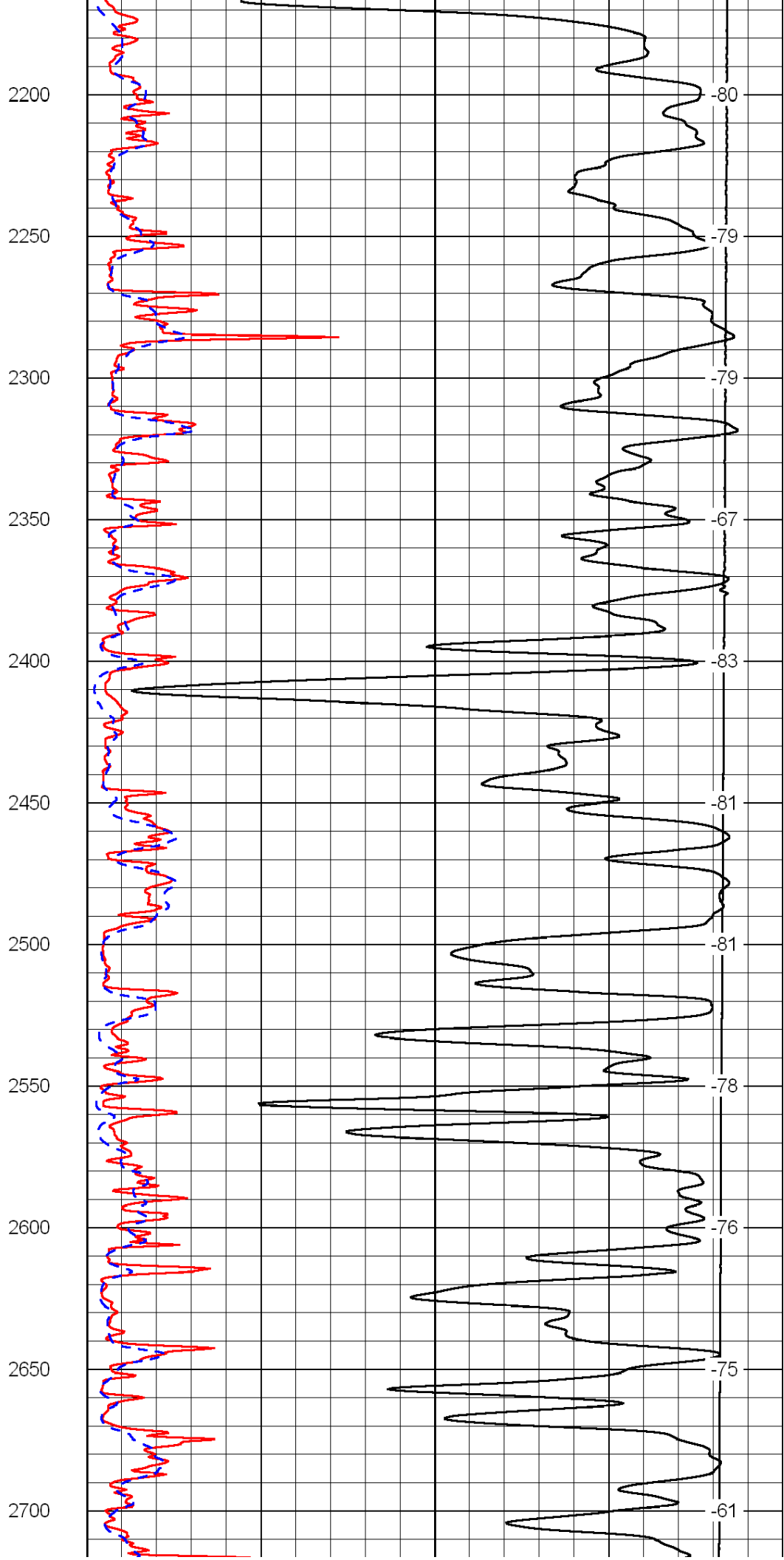
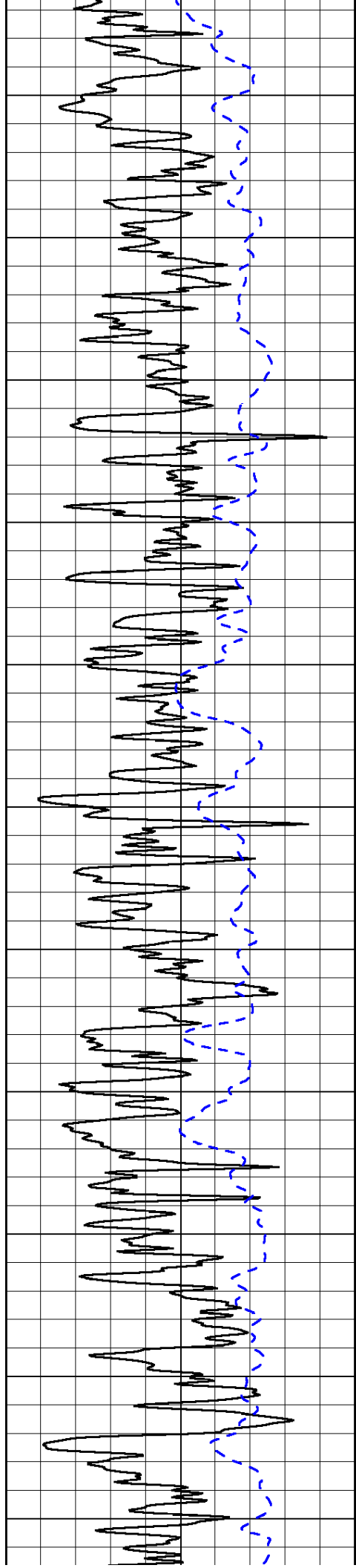
LSPD

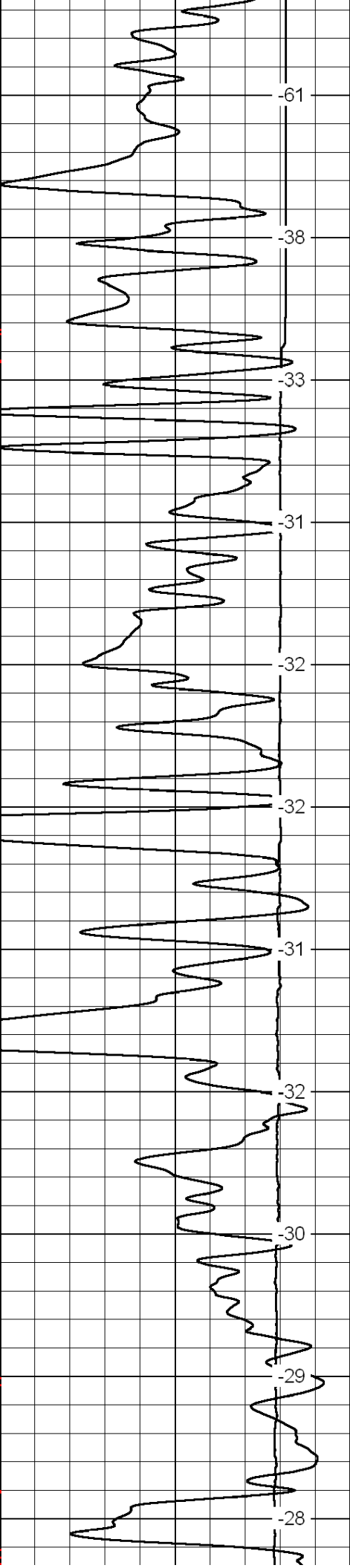
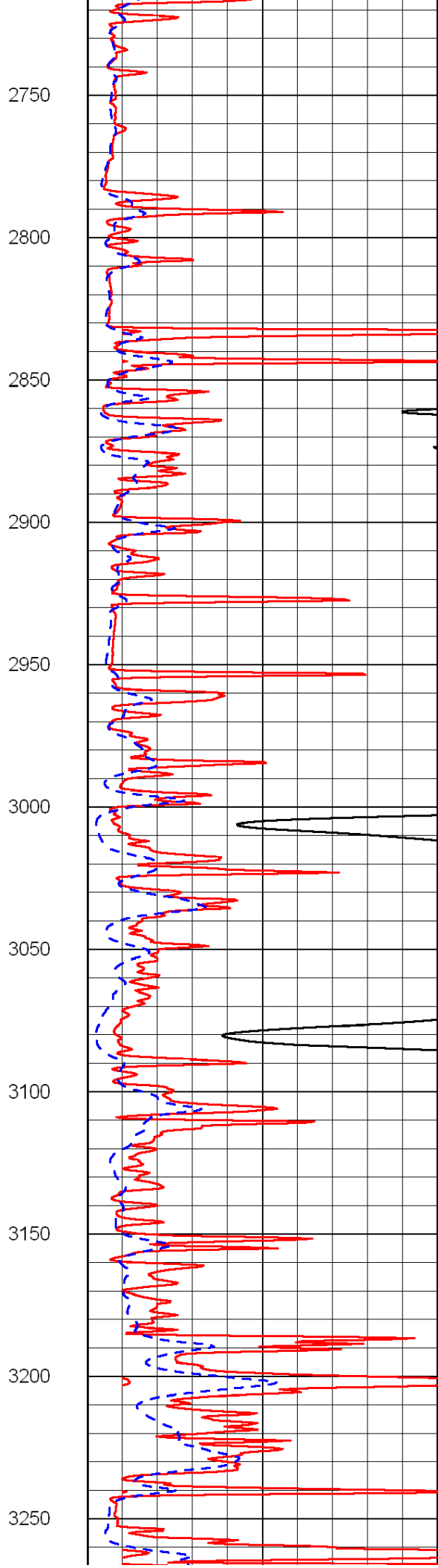
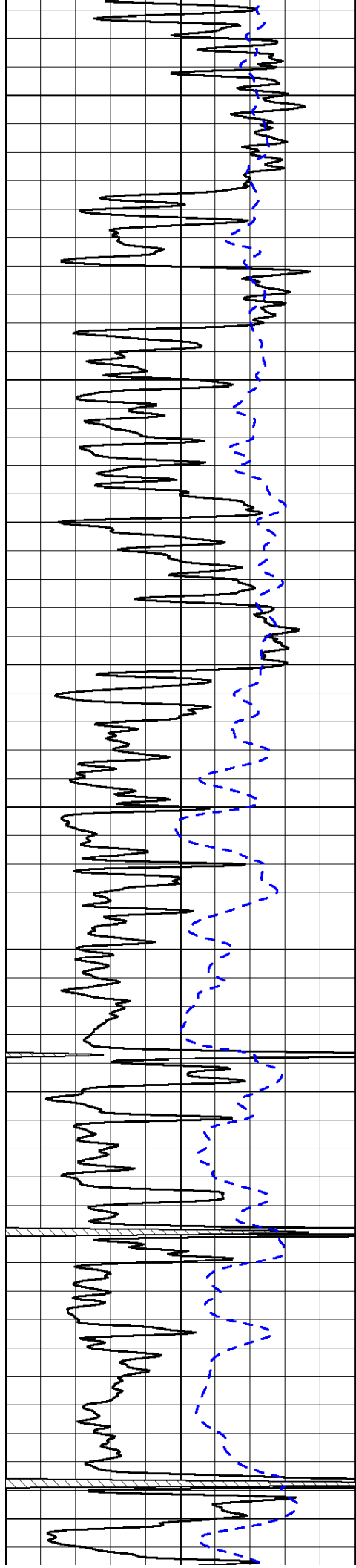
1000	Conductivity	0
15000	Line Tension	0

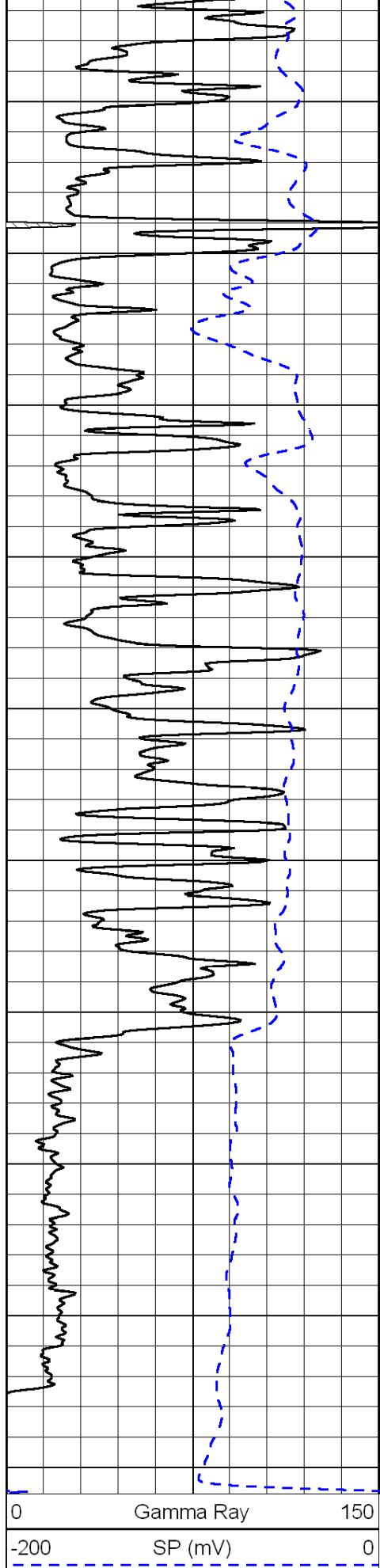
50	Shallow Resistivity	500
50	Deep Resistivity	500



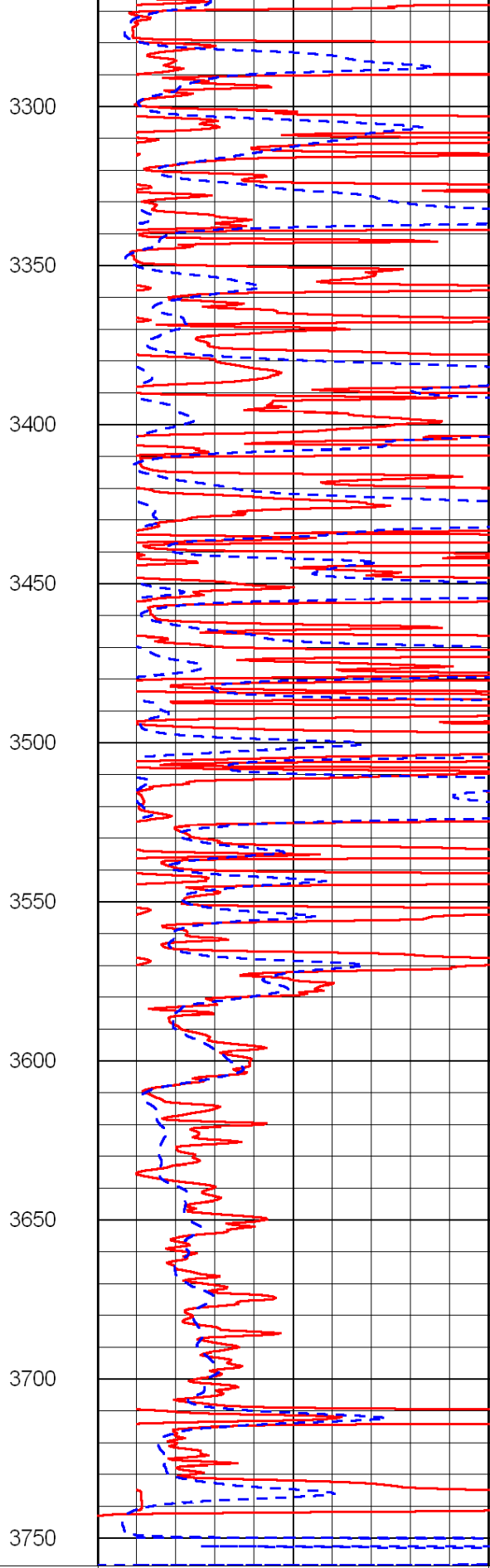




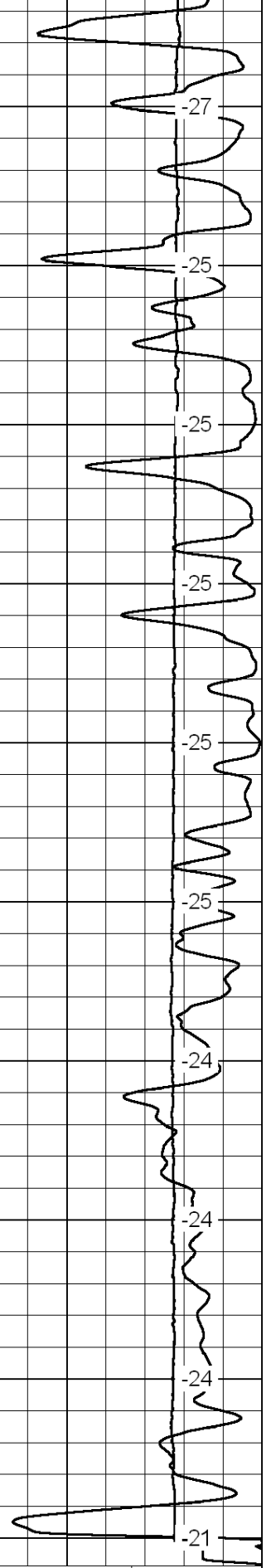




0      Gamma Ray      150  
 -200      SP (mV)      0



0      Shallow Resistivity      50  
 0      Deep Resistivity      50



LSPD

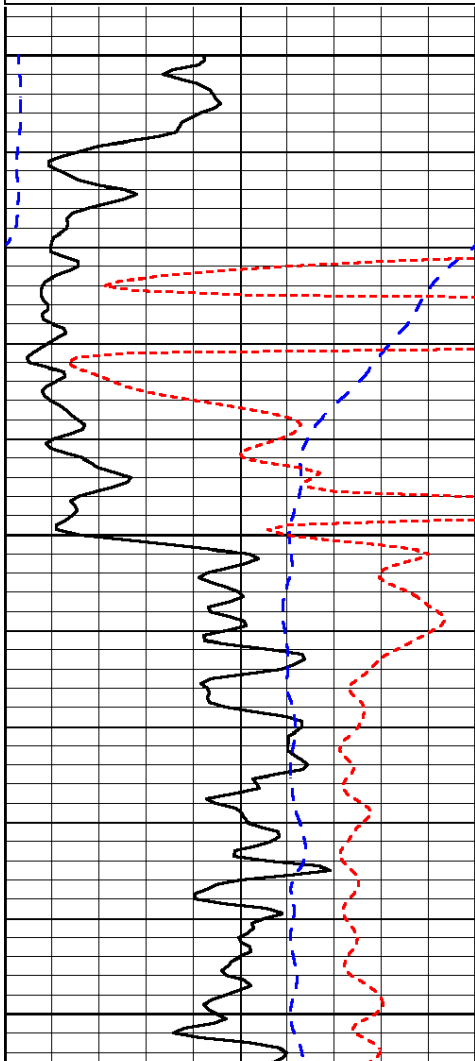
1000      Conductivity      0  
 15000      Line Tension      0  
 50      Shallow Resistivity      500

Database File: c:\warrior\data\tdi\_haas no. 1\tdi032512hd.db  
 Dataset Pathname: dil/tdistack  
 Presentation Format: dil  
 Dataset Creation: Mon Mar 26 02:44:42 2012  
 Charted by: Depth in Feet scaled 1:240

0	Gamma Ray	150
-200	SP (mV)	0
-160	Rxo / Rt	40

0.2	Deep Resistivity	2000
0.2	Medium Resistivity	2000
0.2	Shallow Resistivity	2000
15000	Line Tension	0

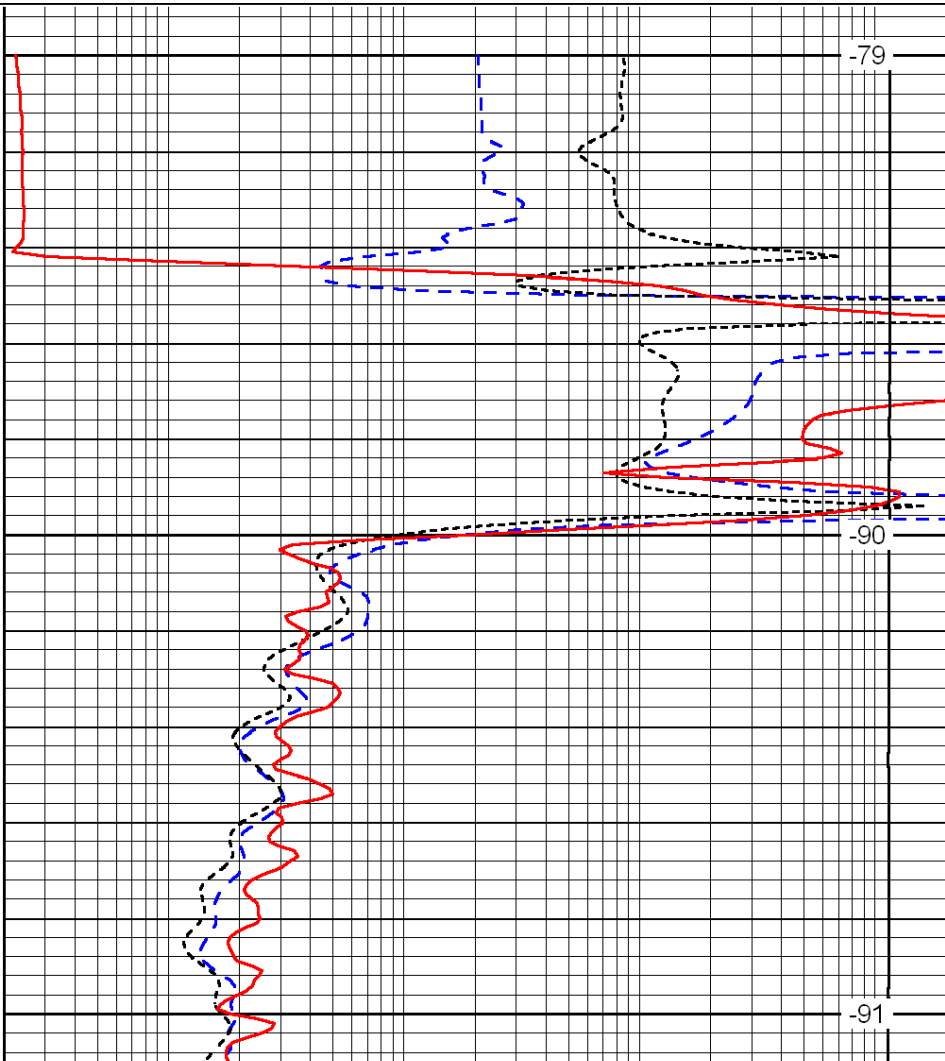
LSPD



1150

1200

1250



-79

-90

-91

0	Gamma Ray	150
-200	SP (mV)	0
-160	Rxo / Rt	40

0.2	Deep Resistivity	2000
0.2	Medium Resistivity	2000
0.2	Shallow Resistivity	2000
15000	Line Tension	0

LSPD

Database File: c:\warrior\data\tdi\_haas no. 1\tdi032512hd.db  
 Dataset Pathname: dil/tdistack  
 Presentation Format: dil  
 Dataset Creation: Mon Mar 26 02:44:42 2012  
 Charted by: Depth in Feet scaled 1:240

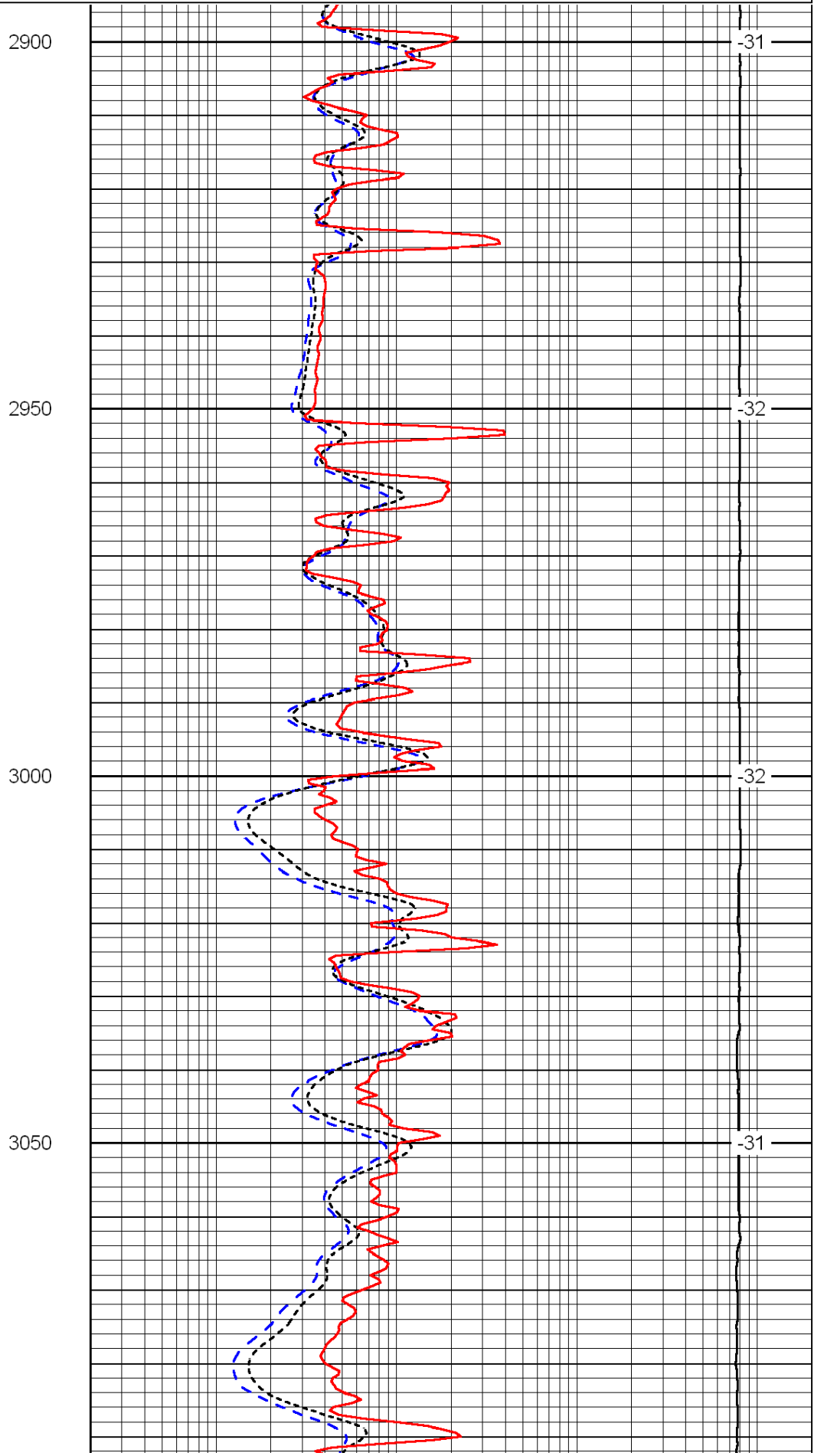
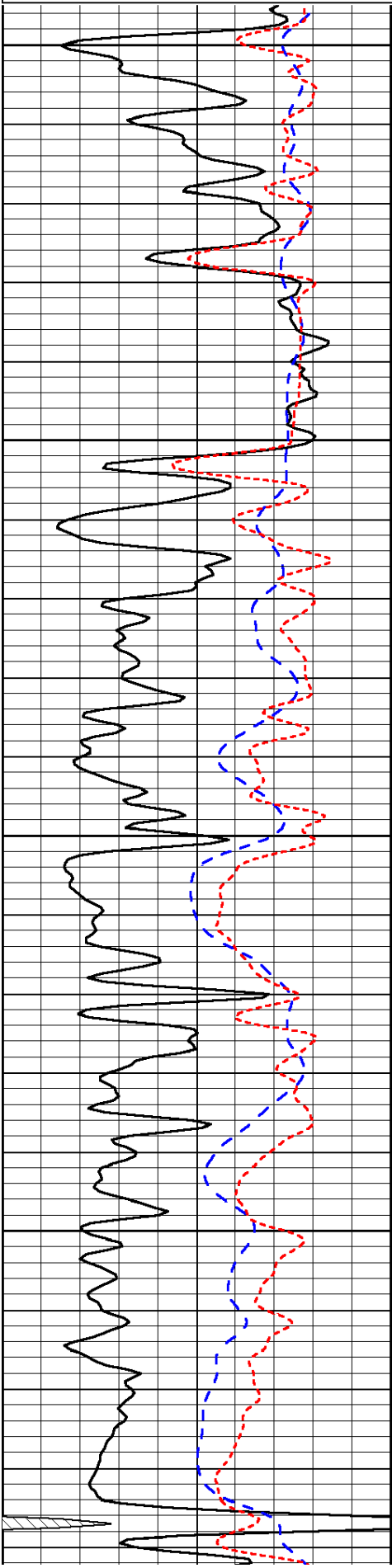
0	Gamma Ray	150
---	-----------	-----

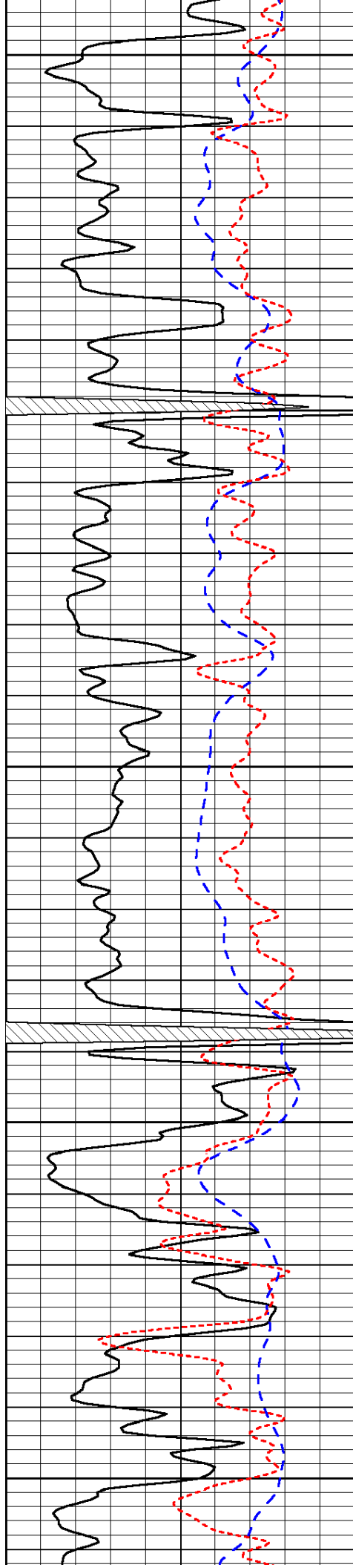
0.2	Deep Resistivity	2000
-----	------------------	------

Gamma Ray	150	
-200	SP (mV)	0
-160	Rxo / Rt	40

0.2	Deep Resistivity	2000
0.2	Medium Resistivity	2000
0.2	Shallow Resistivity	2000
15000	Line Tension	0

LSPD





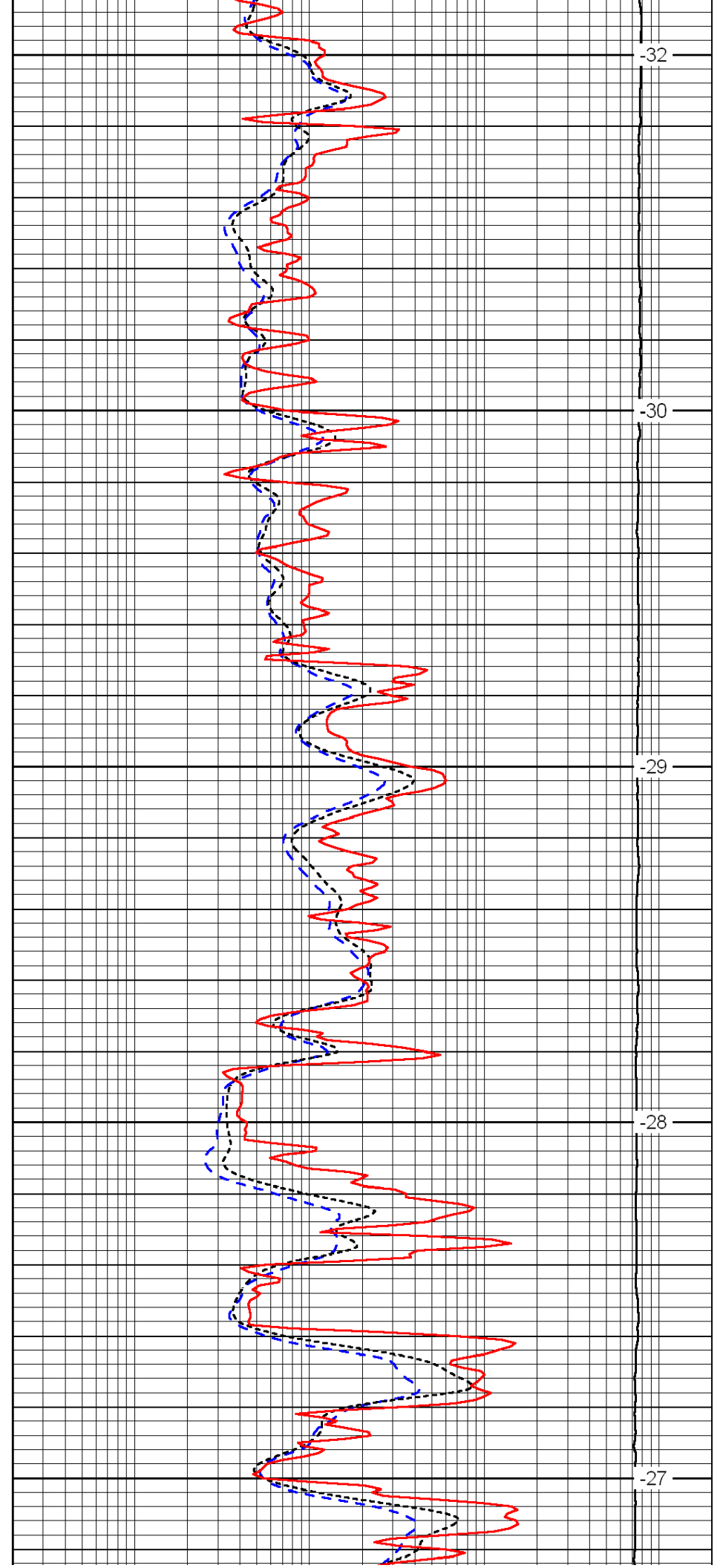
3100

3150

3200

3250

3300



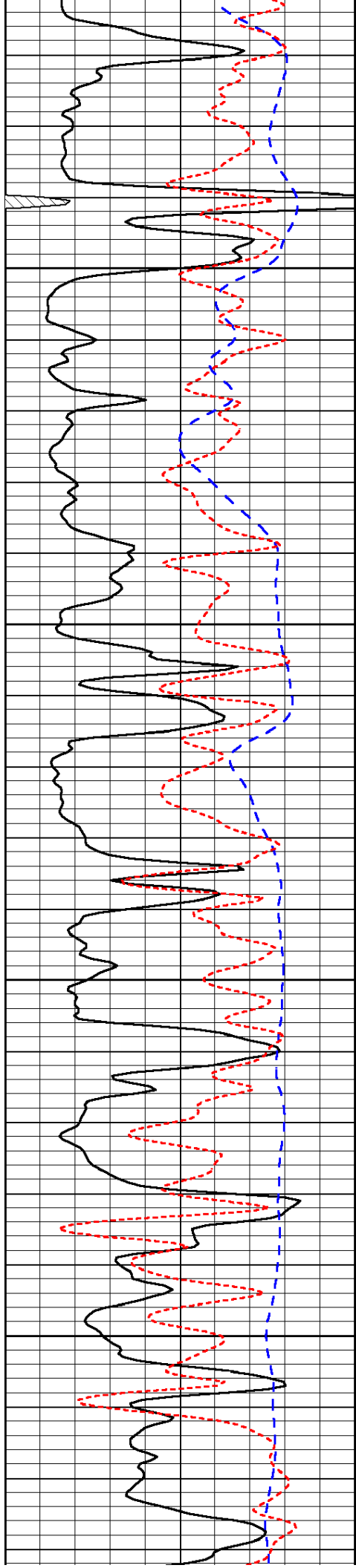
-32

-30

-29

-28

-27

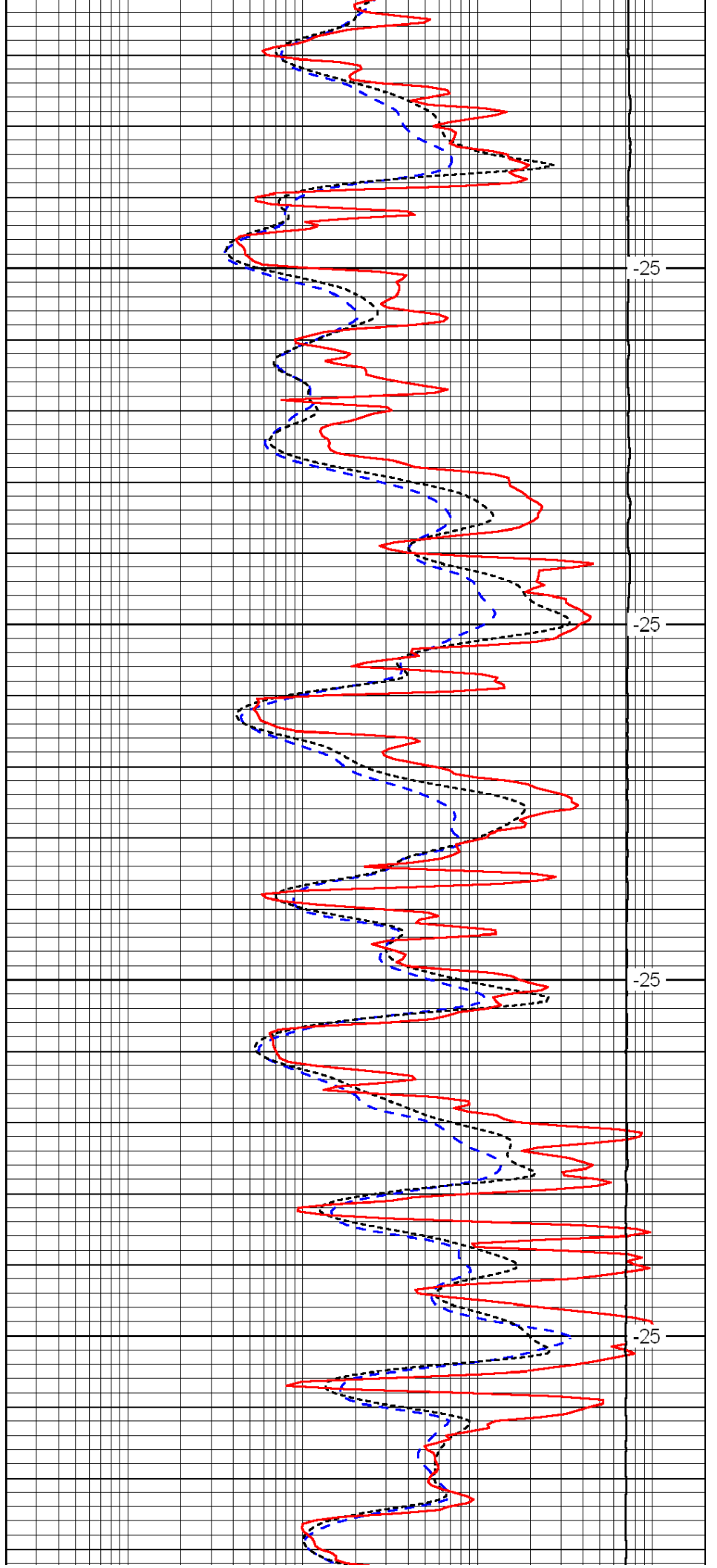


3350

3400

3450

3500

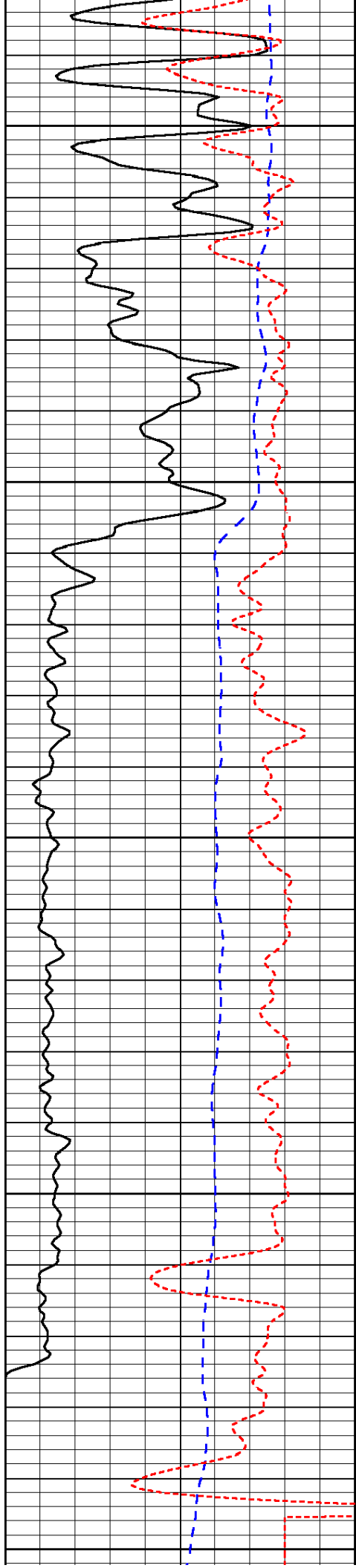


-25

-25

-25

-25



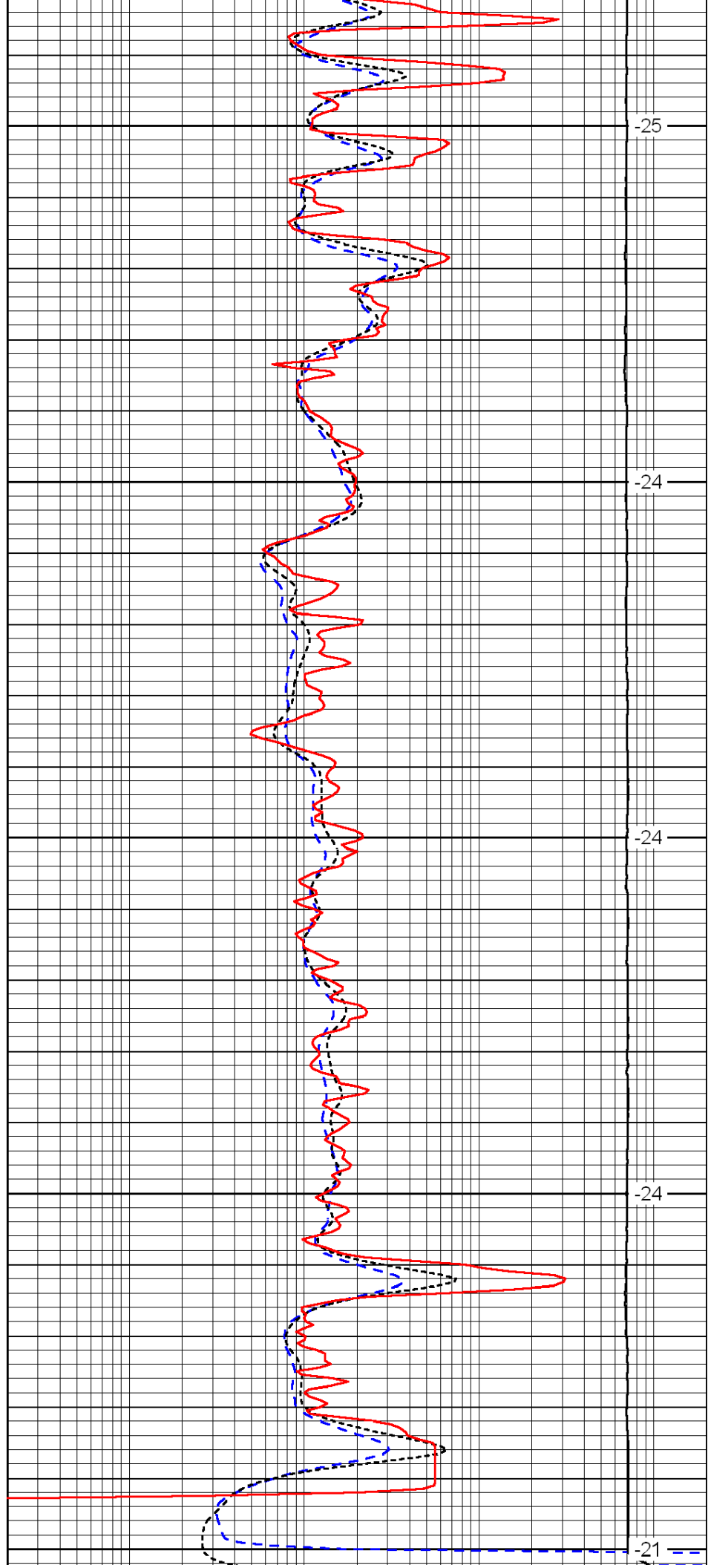
3550

3600

3650

3700

3750



-25

-24

-24

-24

-21

