



DIGITAL LOG (785) 625-3858

Microresistivity Log

15-051-26,273-00-00

API No.

Company TDI, Inc.

Well Haas No. 1

Field Martina East

County Eliis State

Kansas

Location 2310' FNL & 400' FEL

Other Services  
CNL/CDL  
DIL

Sec: 24 Twp: 15 S Rge: 19 W

Permanent Datum Ground Level Elevation 1985  
Log Measured From Kelly Bushing 10 Ft. Above Perm. Datum

Drilling Measured From Kelly Bushing

Elevation  
K.B. 1995  
D.F. 1985  
G.L. 1985

Date	3/26/2012	
Run Number	Two	
Depth Driller	3750	
Depth Logger	3750	
Bottom Logged Interval	3749	
Top Log Interval	2900	
Casing Driller	8.625 @ 1172	
Casing Logger	1170	
Bit Size	7.875	
Type Fluid in Hole	Chemical	
Salinity, ppm CL	3,200	
Density / Viscosity	8.9 59	
pH / Fluid Loss	11.0 6.2	
Source of Sample	Flowline	
Rm @ Meas. Temp	.70 @ 55	
Rmf @ Meas. Temp	.53 @ 55	
Rmc @ Meas. Temp	.95 @ 55	
Source of Rmf / Rmc	Charts	
Rm @ BHT	.33 @ 116	
Operating Rig Time	4 Hours	
Max Rec. Temp. F	116	
Equipment Number	91	
Location	Hays	
Recorded By	K. Bange	
Witnessed By	Herb Deines	Tom Denning

<<< Fold Here >>>

All interpretations are opinions based on inferences from electrical or other measurements and we cannot and do not guarantee the accuracy or correctness of any interpretation, and we shall not, except in the case of gross or willful negligence on our part, be liable or responsible for any loss, costs, damages, or expenses incurred or sustained by anyone resulting from any interpretation made by any of our officers, agents or employees. These interpretations are also subject to our general terms and conditions set out in our current Price Schedule.

Comments

Thank you for using Log-Tech, Inc.  
(785) 625-3858

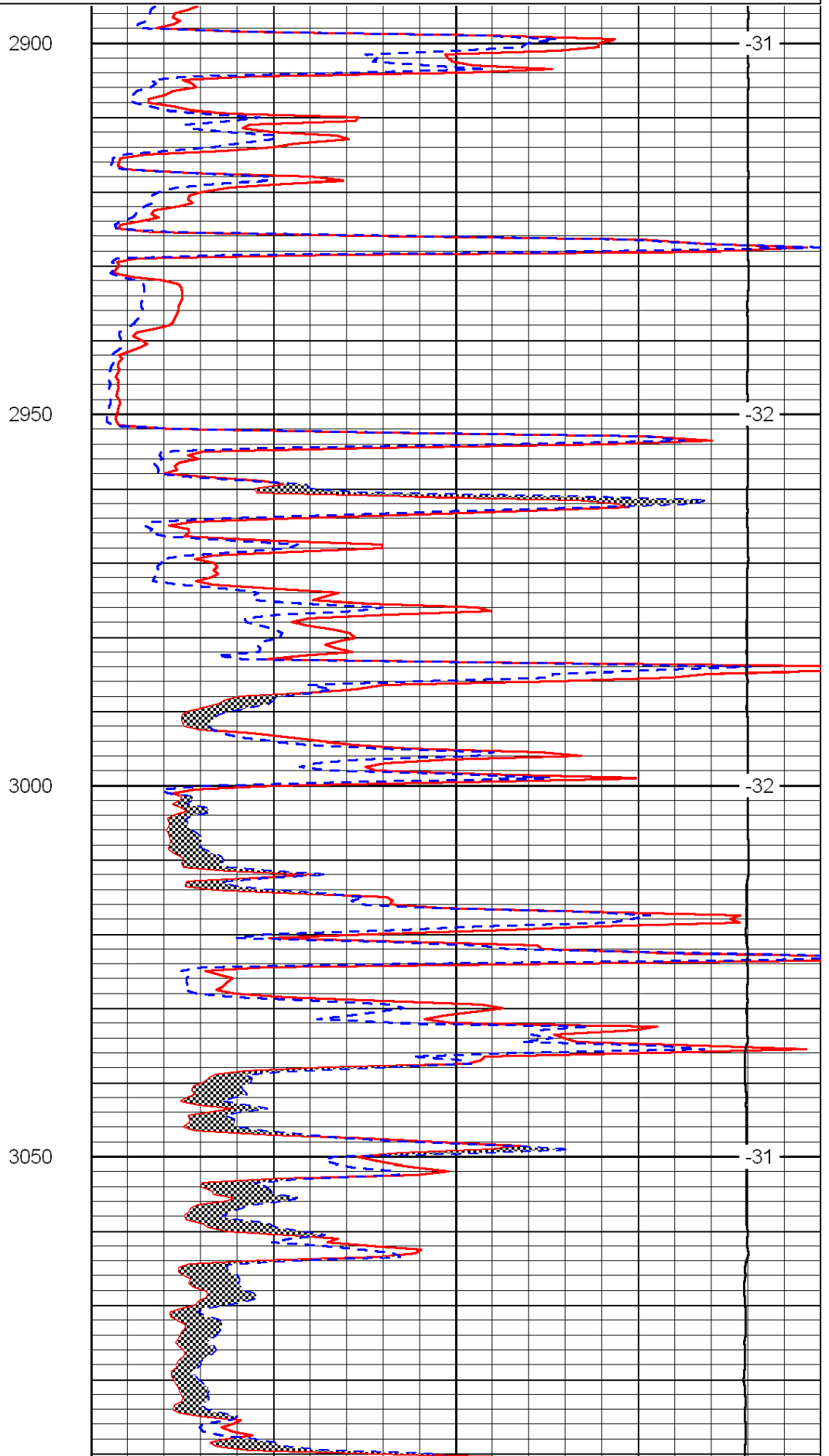
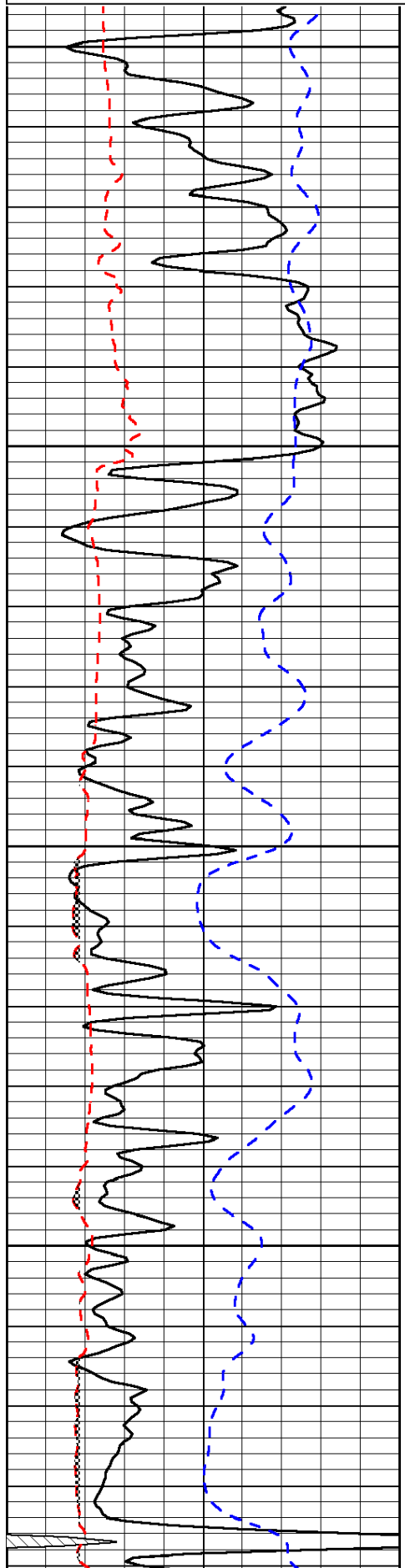
Antonino, 1 E, 3 1/4 S, W into

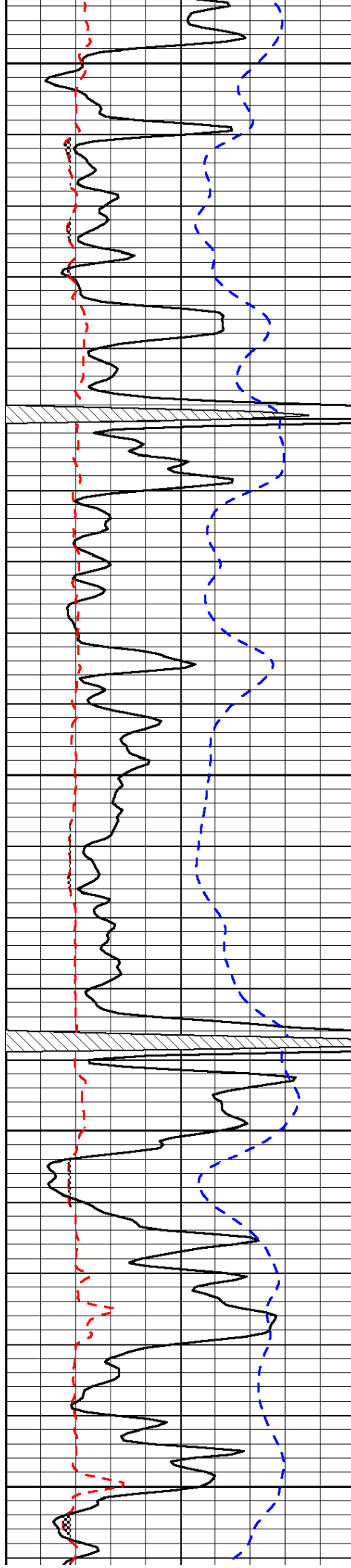
Database File: c:\warrior\data\tdi\_haas no. 1\tdi032512hd.db  
 Dataset Pathname: dil/tdistack  
 Presentation Format: micro  
 Dataset Creation: Mon Mar 26 02:44:42 2012  
 Charted by: Depth in Feet scaled 1:240

0	Gamma Ray	150
6	Micro Log Caliper (GAPI)	16
-200	SP (mV)	0

0	Micro Inverse 1 X 1	40
0	Micro Normal 2"	40
15000	Line Weight	0

LSPD





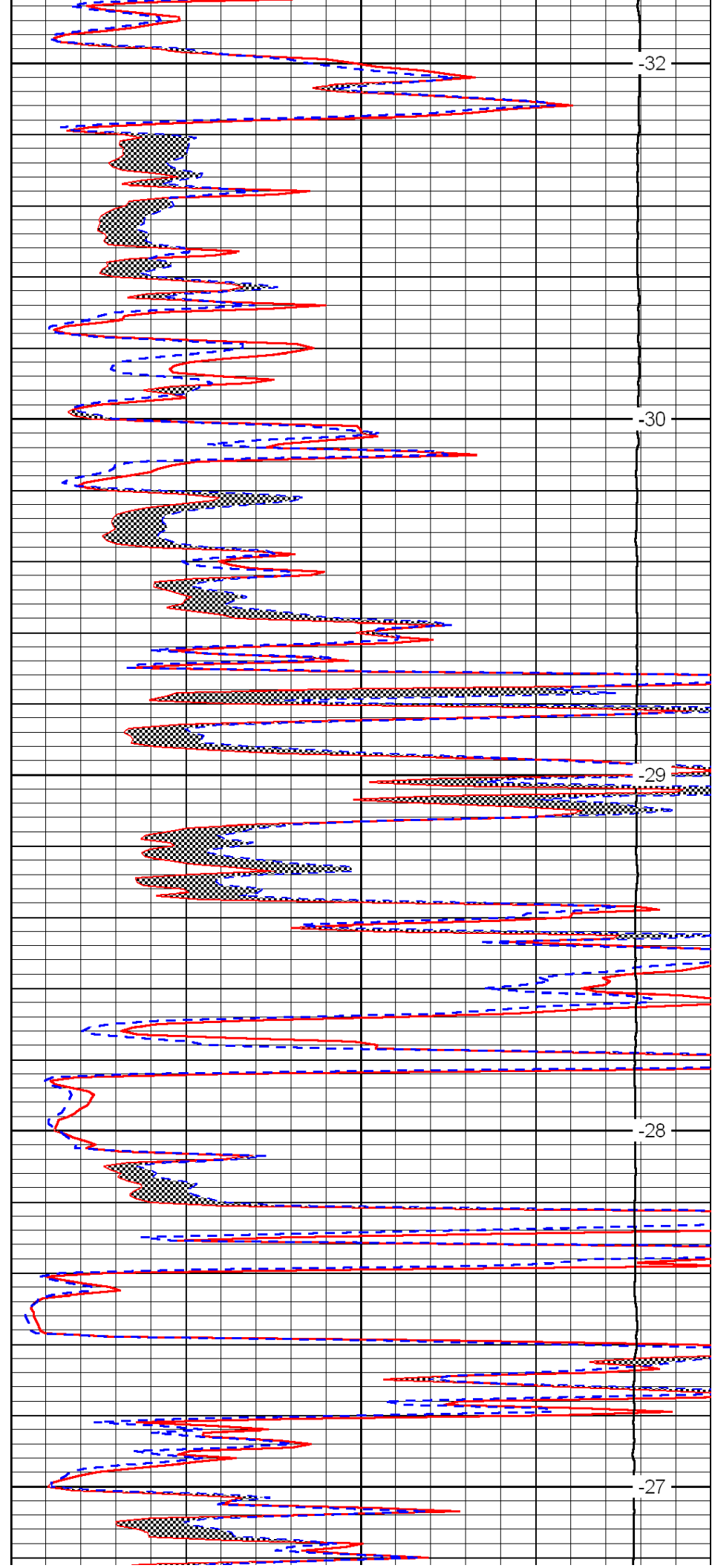
3100

3150

3200

3250

3300



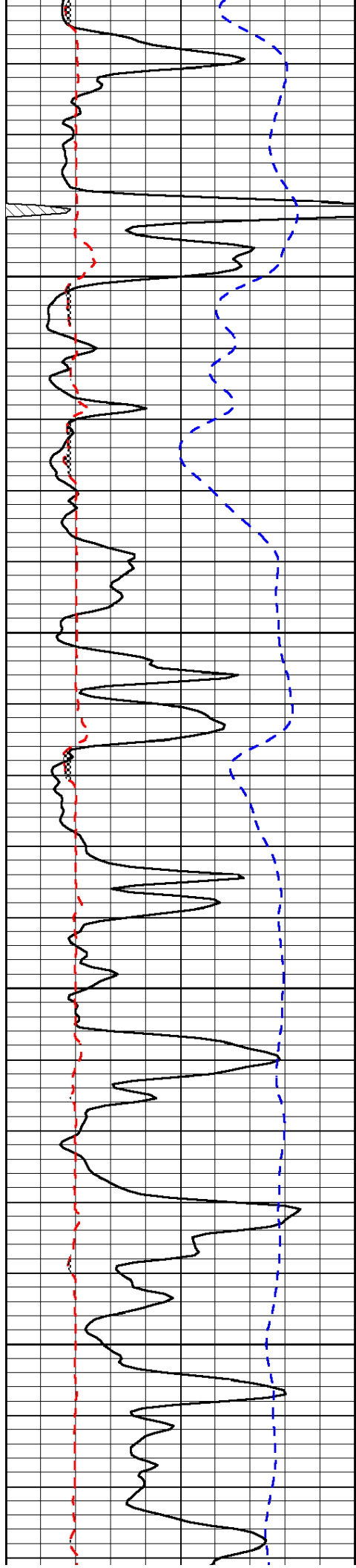
-32

-30

-29

-28

-27

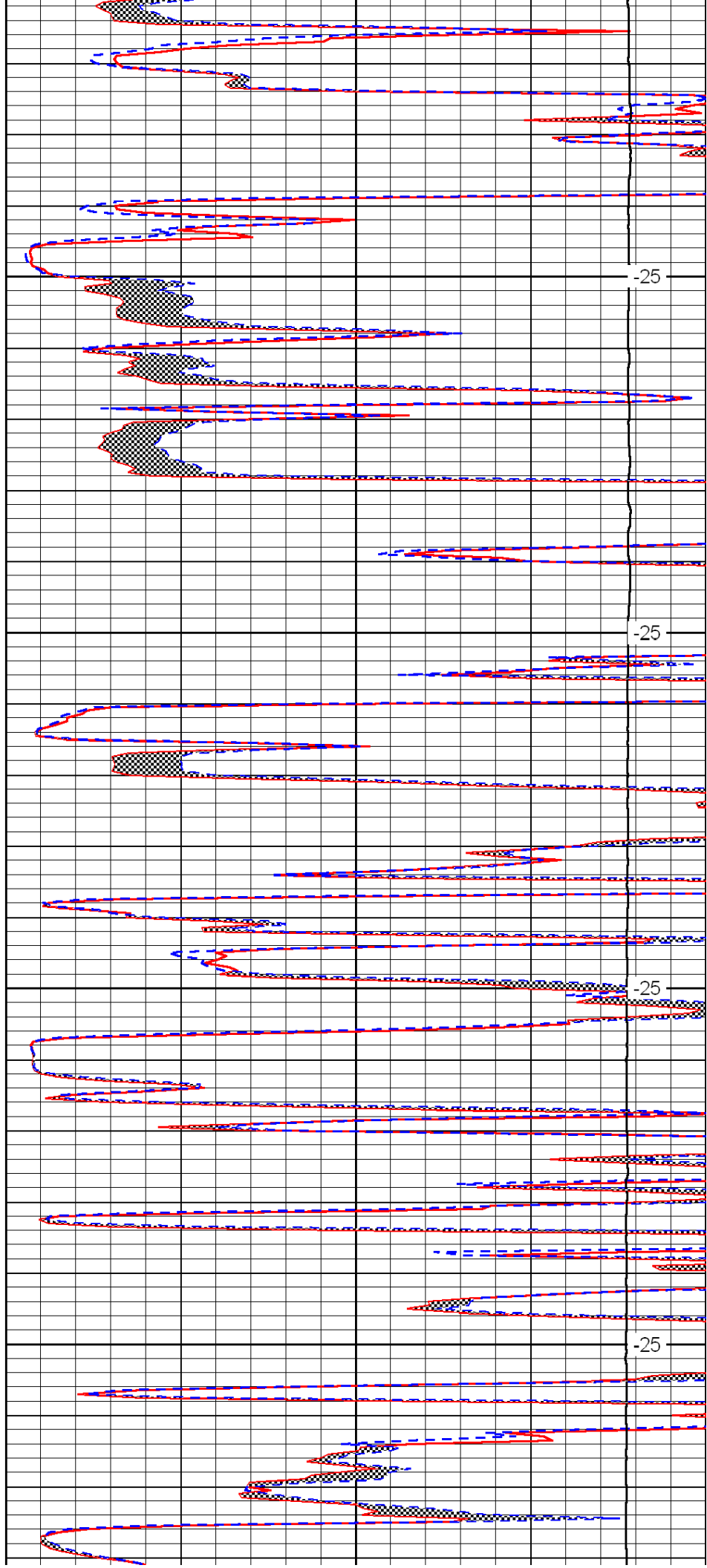


3350

3400

3450

3500

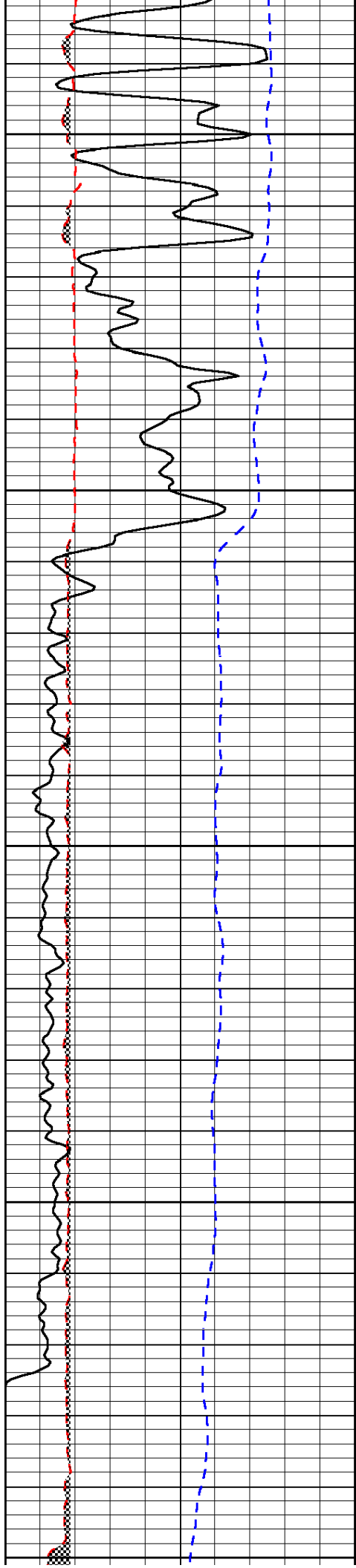


-25

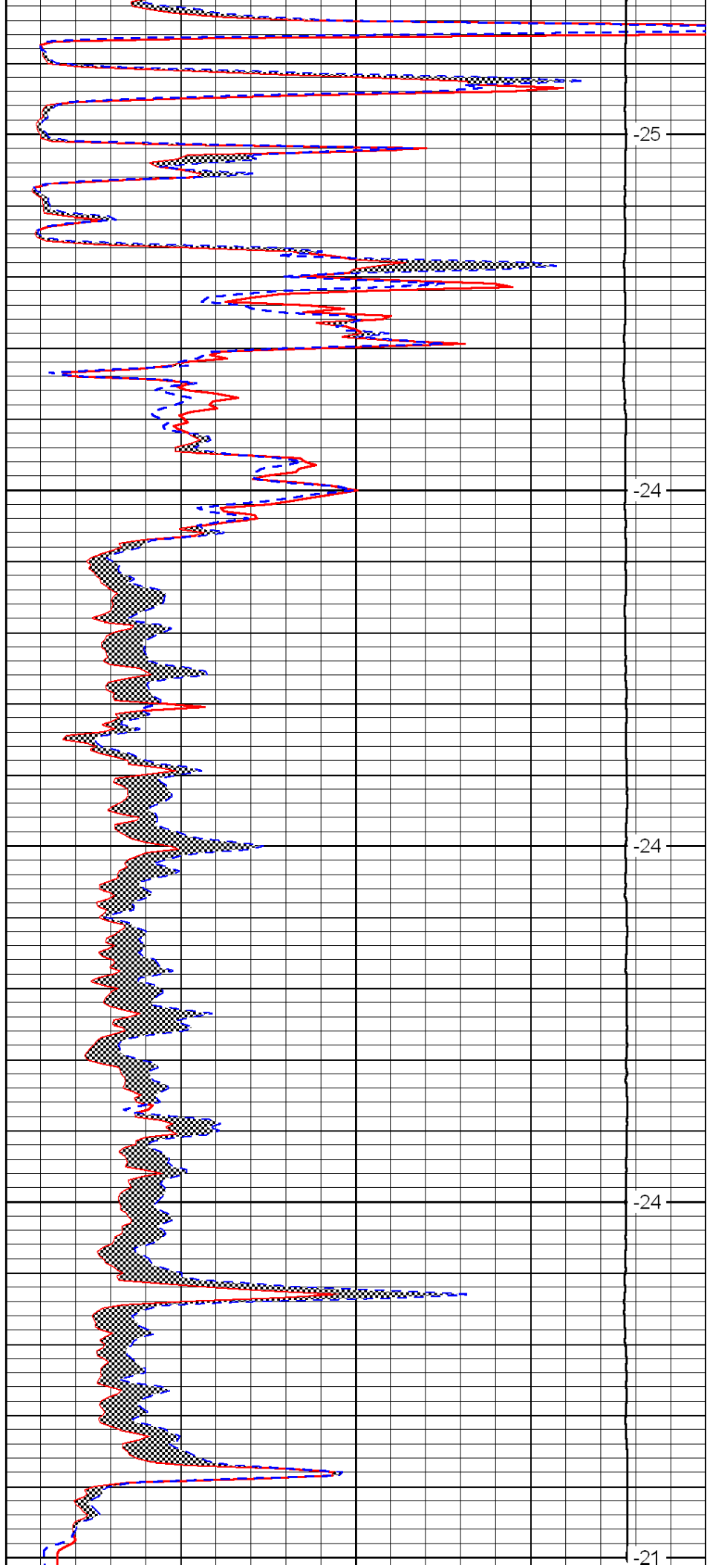
-25

-25

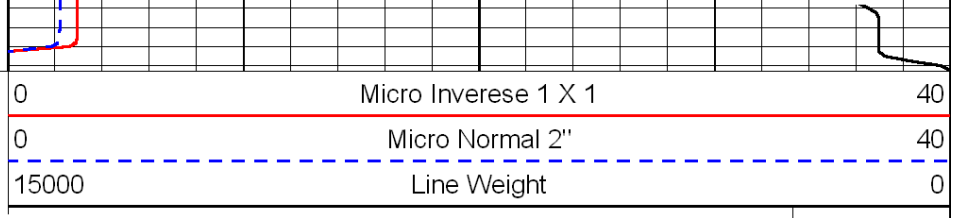
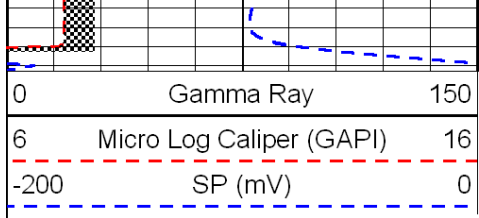
-25



3550  
3600  
3650  
3700  
3750



-25  
-24  
-24  
-24  
-21



LSPD