



Sonic Cement  
Bond Log

(785) 625-3858

15-101-22340-00-00

Company Larson Engineering, Inc.  
Well Joyce Ann Unit No. 1-13  
Field Wildcat  
County Lane State Kansas

Location

95' FNL & 1050' FEL

Other Services

Perforate

Sec: 13 Twp: 19S Rge: 29W

Elevation

Permanent Datum Ground Level Elevation 2792

Log Measured From Kelly Bushing 7 Ft. Above Perm. Datum

K.B. 2799  
D.F.  
G.L. 2792

Run Number	One	
Date Survey	2/25/2012	
Date Cementing	2/11/2012	
Type Cementing Operation	Primary	
Depth Driller	4690	
Depth Logger	4646	
Logged Interval	4644 to 3500	to
Casing Driller	5.5 @ T.D.	@
Float Collar -- D.V. Tool	2105	
Squeeze Depth		
Amount & Type Cement		
Amount & Type Admix		
Type Fluid In Hole	Water	
Fluid Level	175	
Salinity PPM CL		
Weight lb/gal -- Vis.		
Approx. Logged Cement Top	3695	
Calculated Cement Top		
Max. Hole Temperature	123	
Tool No.	D-1	
Spacing Recorded	3-5	
Equipment -- Location	72 Hays	
Recorded By	K. Ladrigan	
Witnessed By	Tom Larson	

<<< Fold Here >>>

All interpretations are opinions based on inferences from electrical or other measurements and we cannot and do not guarantee the accuracy or correctness of any interpretation, and we shall not, except in the case of gross or willful negligence on our part, be liable or responsible for any loss, costs, damages, or expenses incurred or sustained by anyone resulting from any interpretation made by any of our officers, agents or employees. These interpretations are also subject to our general terms and conditions set out in our current Price Schedule.

Comments

Thank you for using Log-Tech (785) 625-3858

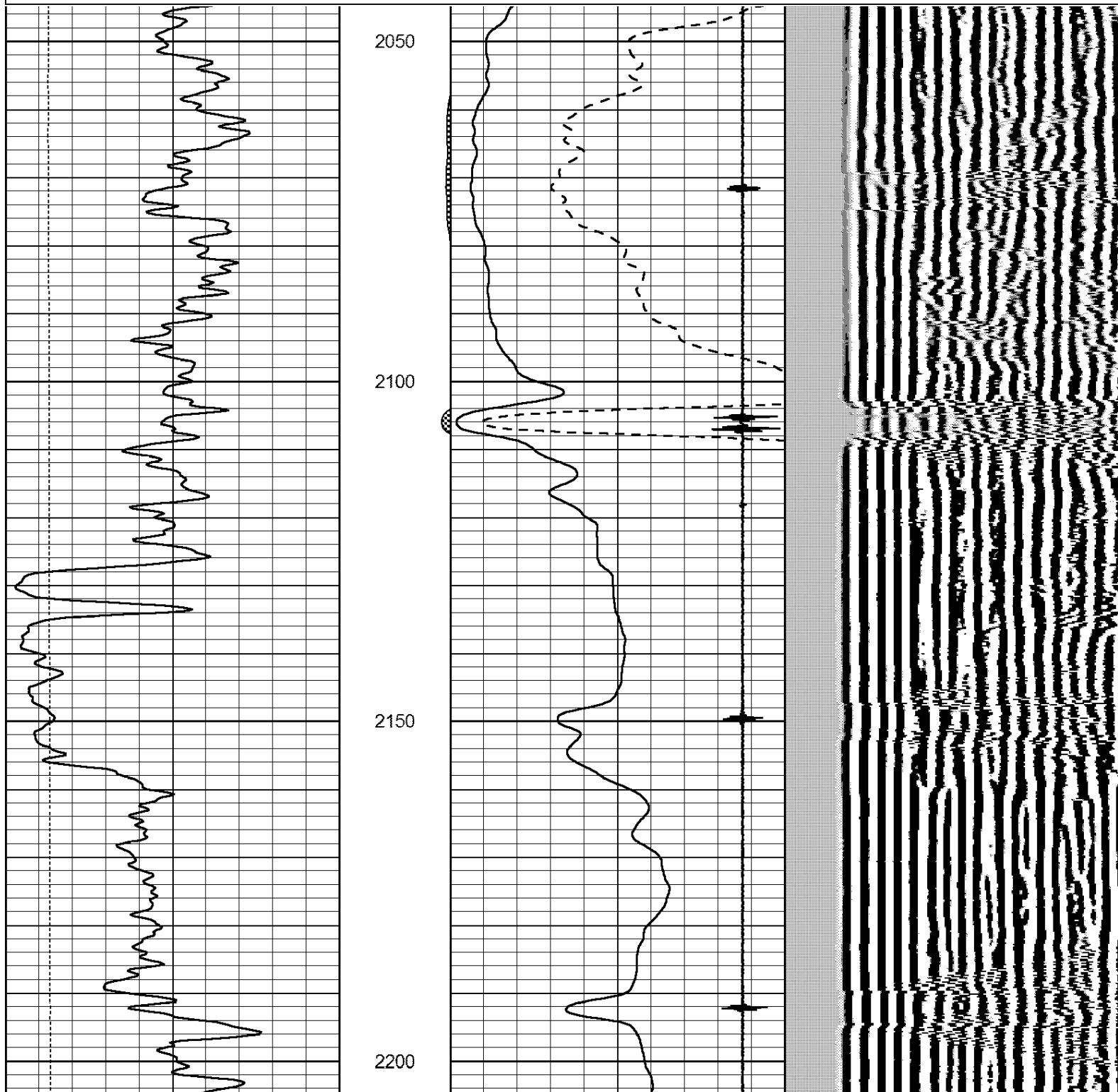
Dighton, KS., 5.25 South  
West Into At Tank.



Port Collar @ 2105

Database File: laron-joyceann1-13.db  
 Dataset Pathname: grcbl/run1/pass4  
 Presentation Format: cldig  
 Dataset Creation: Sat Feb 25 09:14:33 2012 by Log SCH 111116  
 Charted by: Depth in Feet scaled 1:240

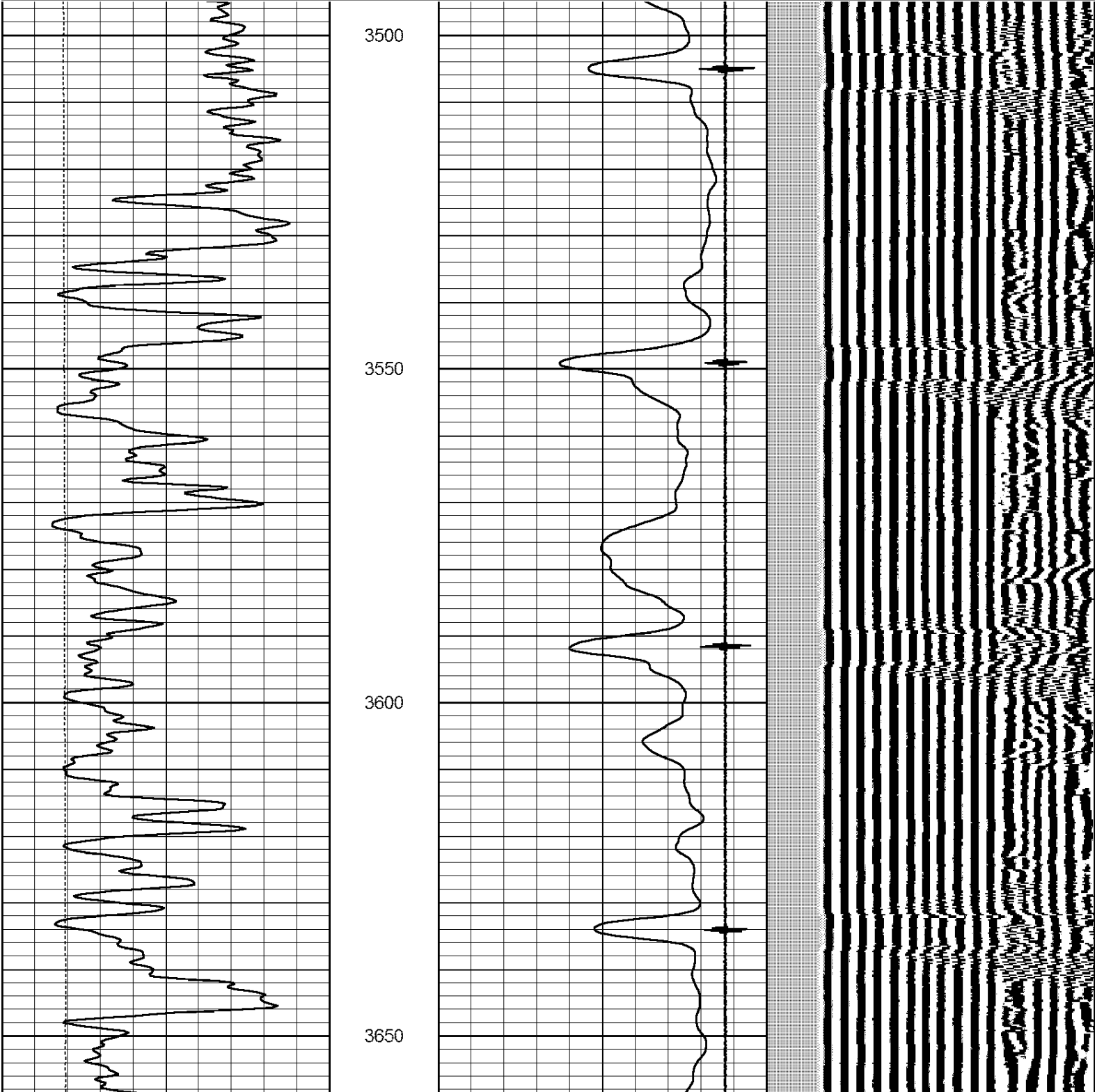
0	GR (GAPI)	150	AMP3	0	Amplitude (mV)	100	200	Variable Density	1200
0	LTEN (lb)	5000	(mV)	0	Amplified Amplitude (mV)	20			
			-100	10	7	Collar Locator	-1		

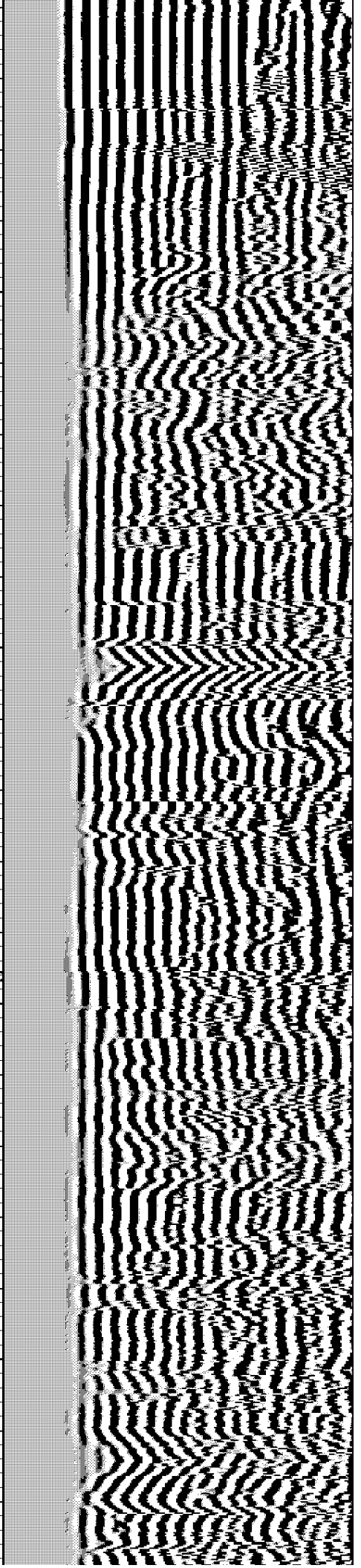
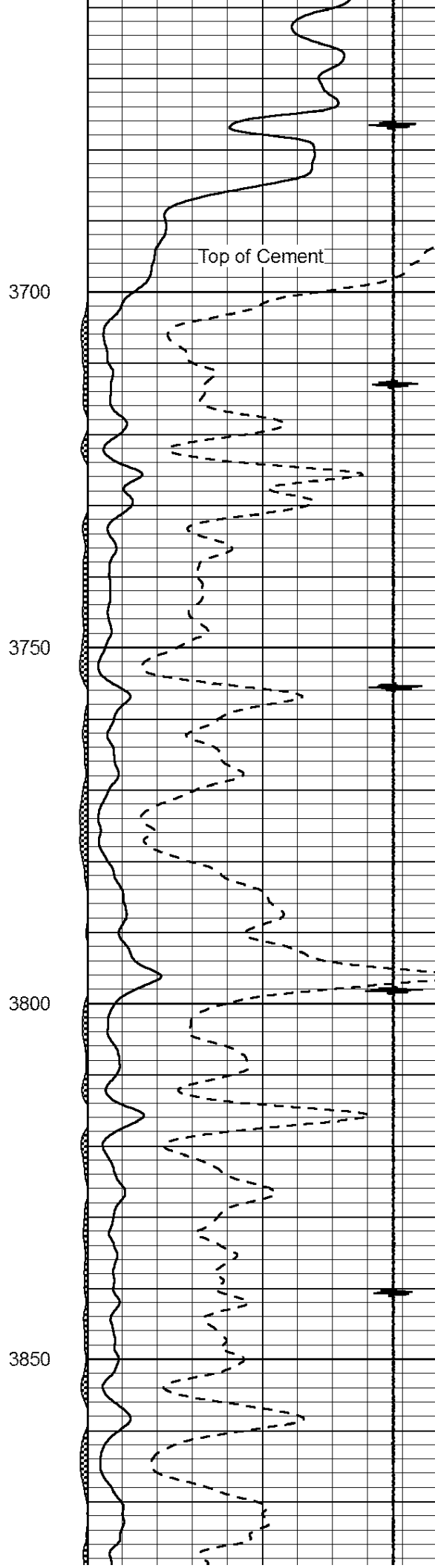
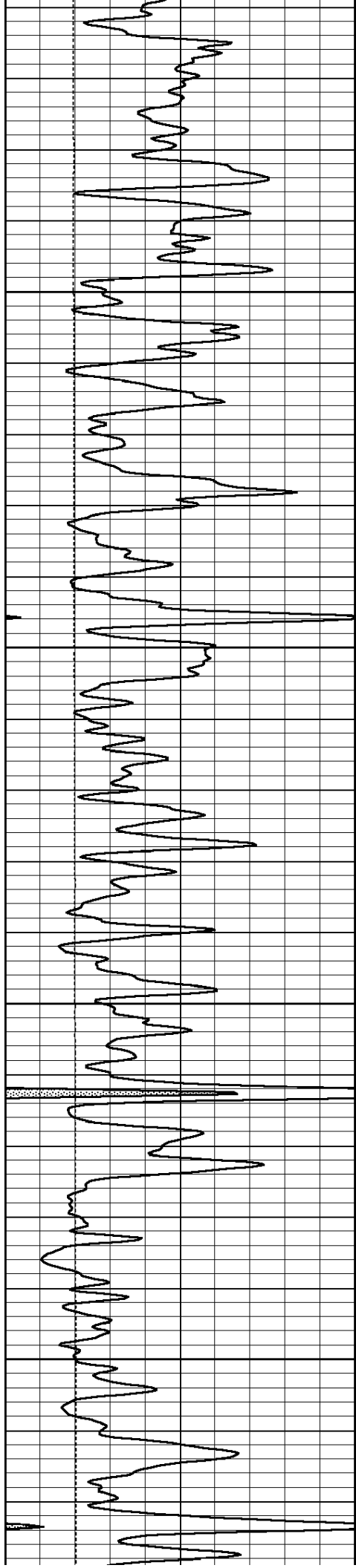


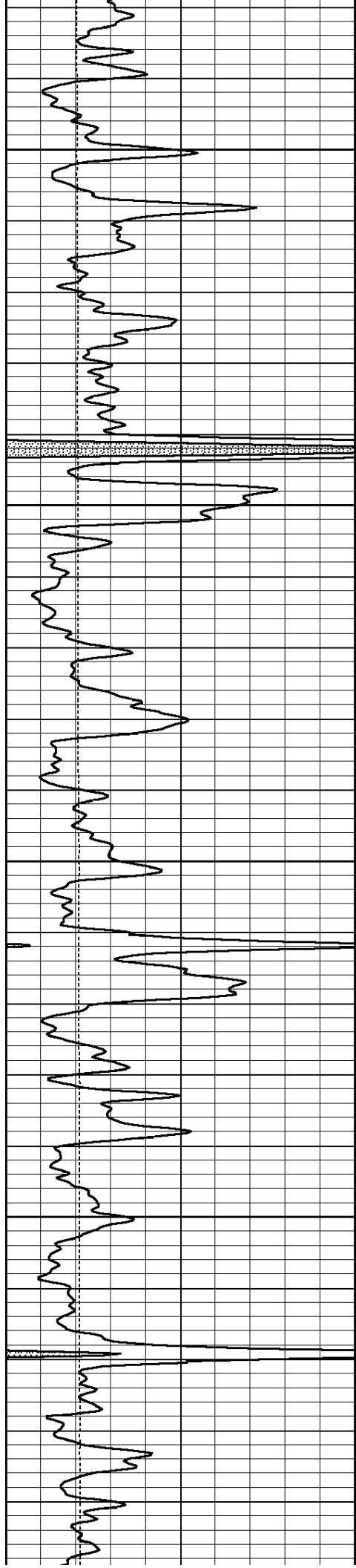
0	GR (GAPI)	150	AMP3	0	Amplitude (mV)	100	200	Variable Density	1200
0	LTEN (lb)	5000	(mV)	0	Amplified Amplitude (mV)	20			
			-100	10	7	Collar Locator	-1		

Database File: laron-joyceann1-13.db  
 Dataset Pathname: grcbl/run1/pass3.2  
 Presentation Format: cbl dig  
 Dataset Creation: Sat Feb 25 09:39:08 2012  
 Charted by: Depth in Feet scaled 1:240

0	GR (GAPI)	150	AMP3	0	Amplitude (mV)	100	200	Variable Density	1200
0	LTEN (lb)	5000	(mV)	0	Amplified Amplitude (mV)	20			
			-100 10	7	Collar Locator	-1			





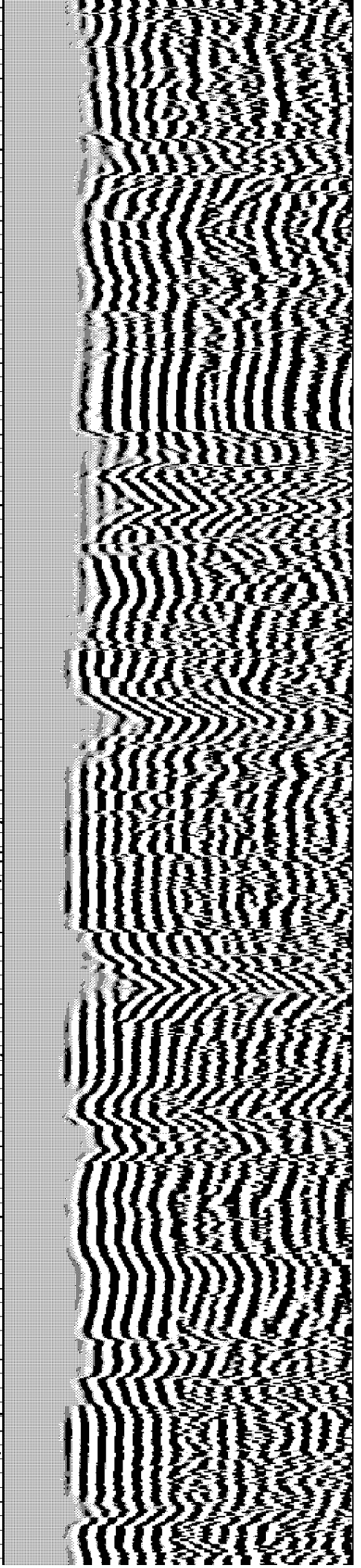
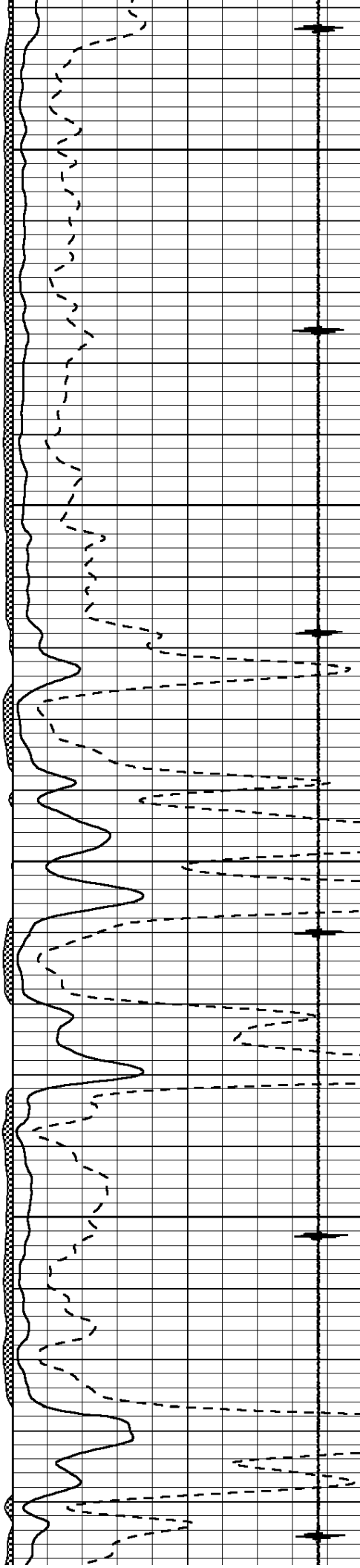


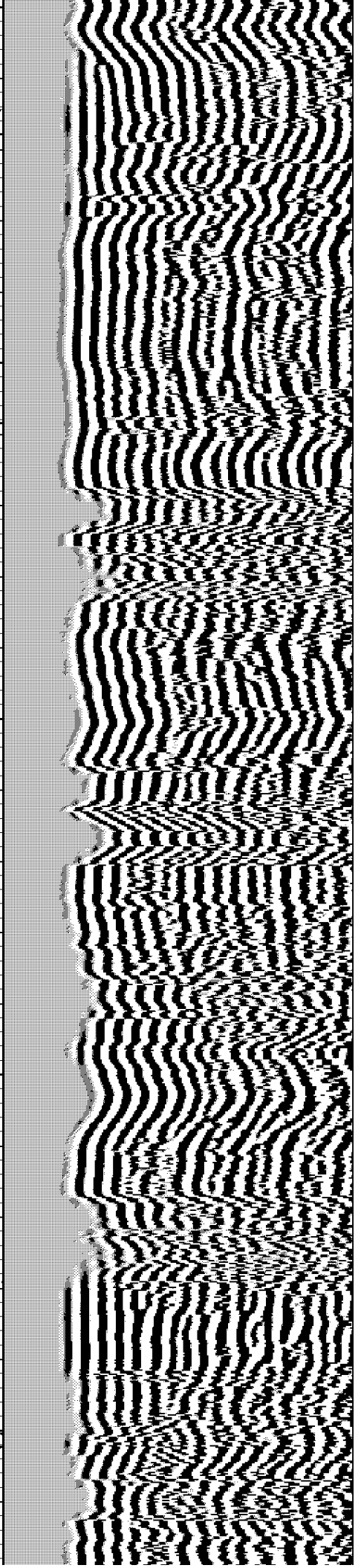
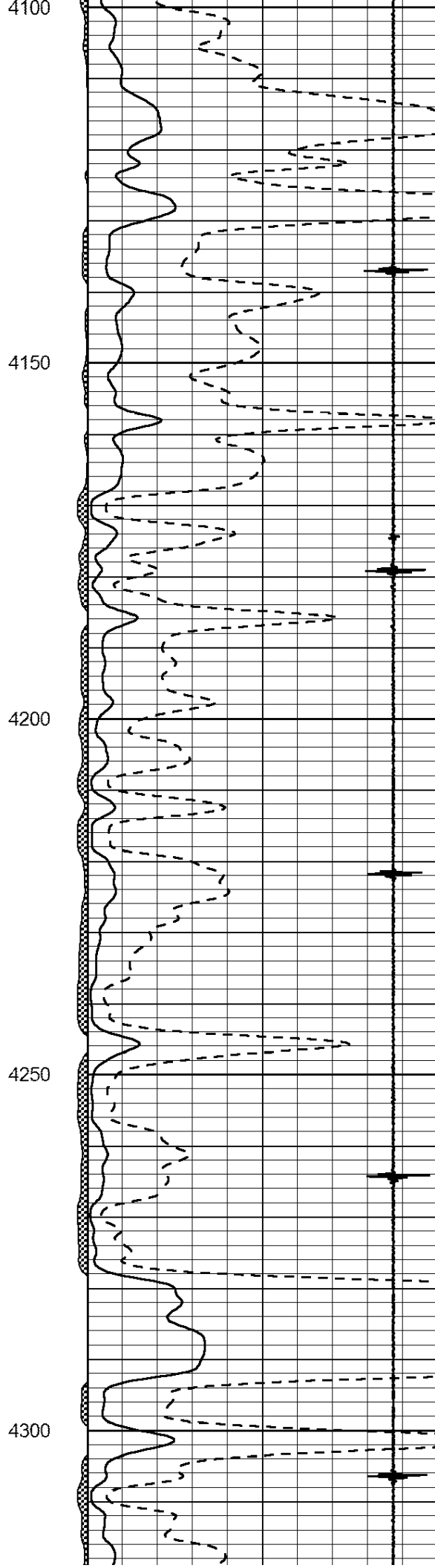
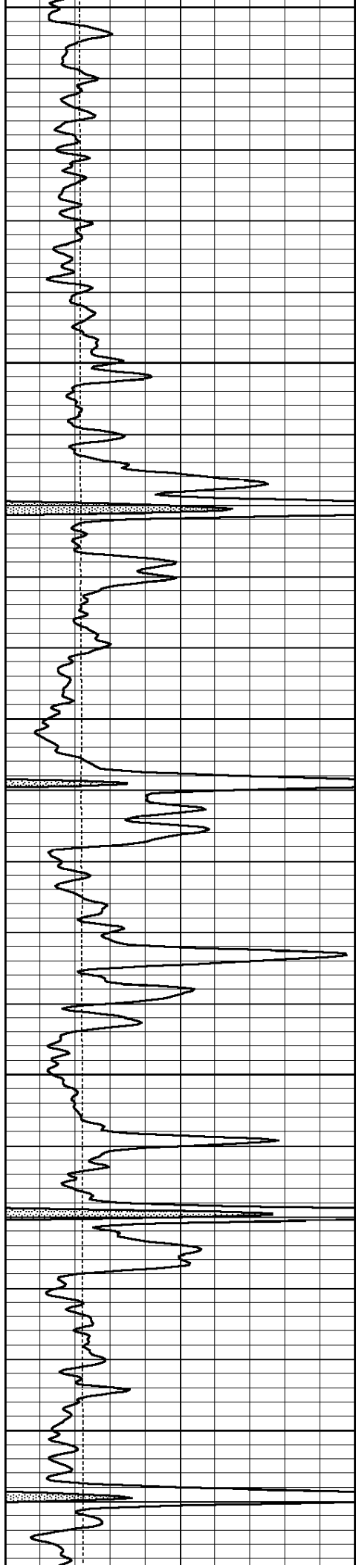
3900

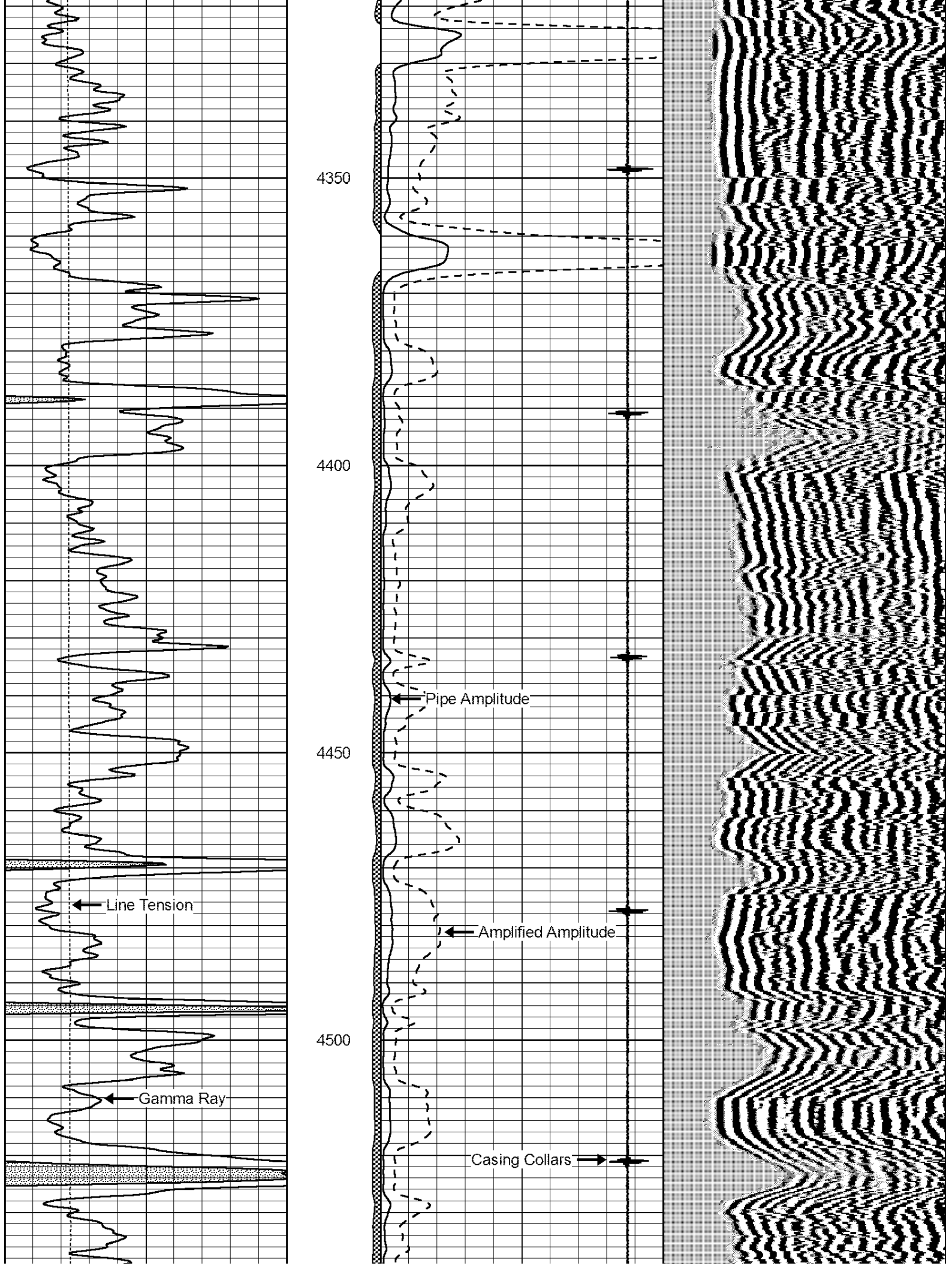
3950

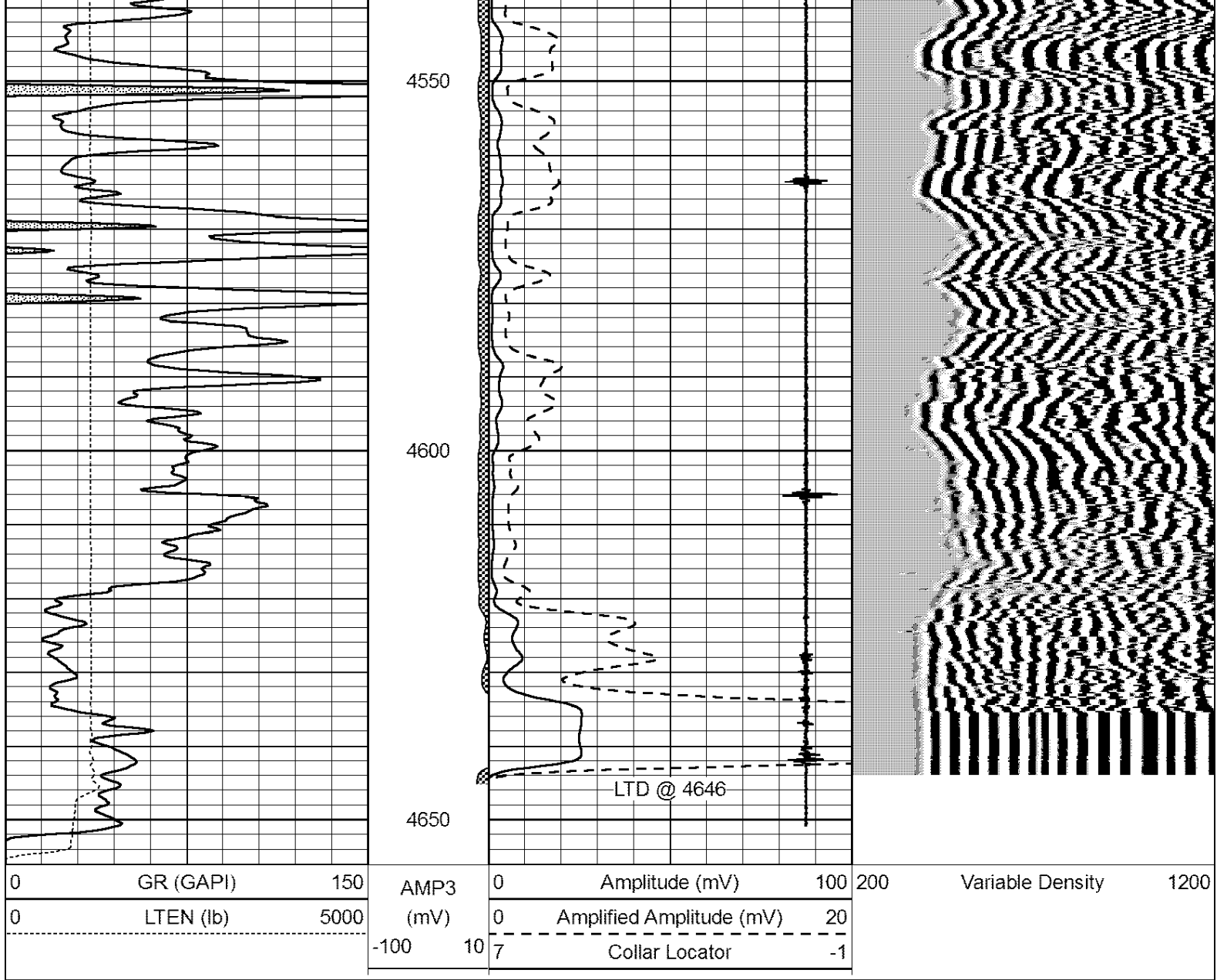
4000

4050





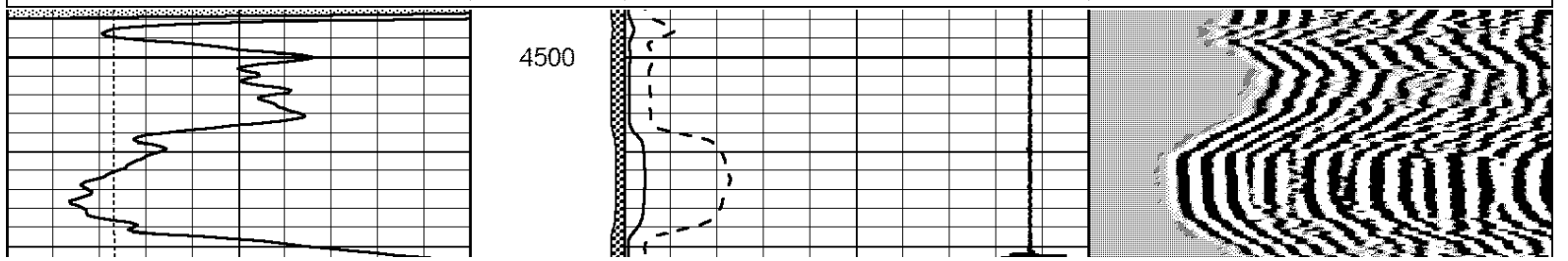
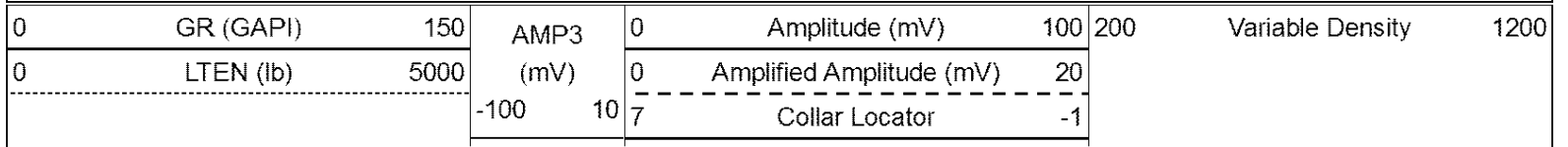


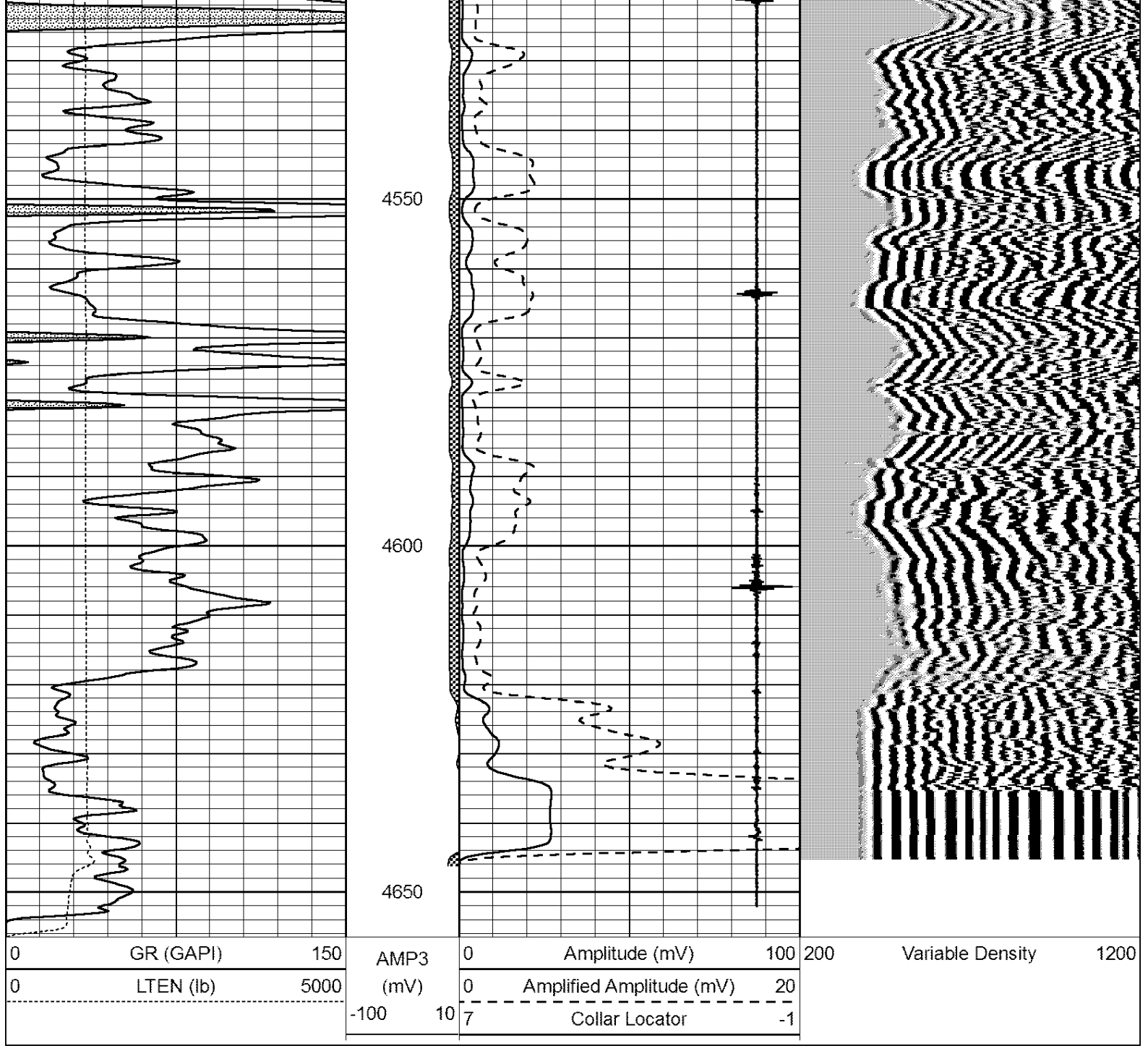


**LOG-TECH** 

# Repeat Section

Database File: larsen-joyceann1-13.db  
 Dataset Pathname: grcbl/run1/pass2  
 Presentation Format: cbl dig  
 Dataset Creation: Sat Feb 25 08:43:56 2012 by Log SCH 111116  
 Charted by: Depth in Feet scaled 1:240





0	GR (GAPI)	150
0	LTEN (lb)	5000

AMP3	0	Amplitude (mV)	100	
(mV)	0	Amplified Amplitude (mV)	20	
-100	10	7	Collar Locator	-1

200	Variable Density	1200
-----	------------------	------