



MIDWEST SURVEYS
 LOGGING - PERFORATING - CONSULTING SERVICES
 P.O. Box 66, OSAWATOMIE, KS 66064
 913.755.2128

GAMMA RAY / NEUTRON / CCL

File No.

Company: Altavista Energy, Inc.
 Well: Sauder No.- 10
 Field: Wildcat
 County: Coffey State: Kansas

Location: 2145' FSL & 5115' FEL
 SW-NW-NW-SW

Sec. 14
 Permament Daum: GL
 Log Measured From: GL
 Drilling Measured From: GL

Date: 09-12-2012
 Run Number: One
 Depth Driller: 1092.0
 Depth Logger: 1041.0
 Bottom Logged Interval: 1040.0
 Top Log Interval: 200.0
 Fluid Level: Full

Type Fluid: Water
 Density / Viscosity: NA
 Salinity - PPM Cl: NA
 Max Recorded Temp: NA
 Estimated Cement Top: 0.0

Equipment No.: 104
 Location: Osawatimie
 Recorded By: Gary Wintersch
 Witnessed By: Doug Evans

BORE-HOLE RECORD
 R/N: TO FROM TO FROM TO FROM
 No.: 12.25" 0.0 56.50 7.00" 0.0 56.50
 Type: 5.875" 56.50 1092.0 2.875" 6.5" 0.0

CASINGS RECORD
 SIZE: 7.00" 19# 0.0 7.00" 19# 0.0
 WGT: 7.00" 19# 0.0 7.00" 19# 0.0
 FROM: 0.0 56.50 1092.0 0.0 56.50 1092.0
 TO: 56.50 1092.0 1092.0 56.50 1092.0 1092.0
 Baffle: Ser At

Other Services: Perforate

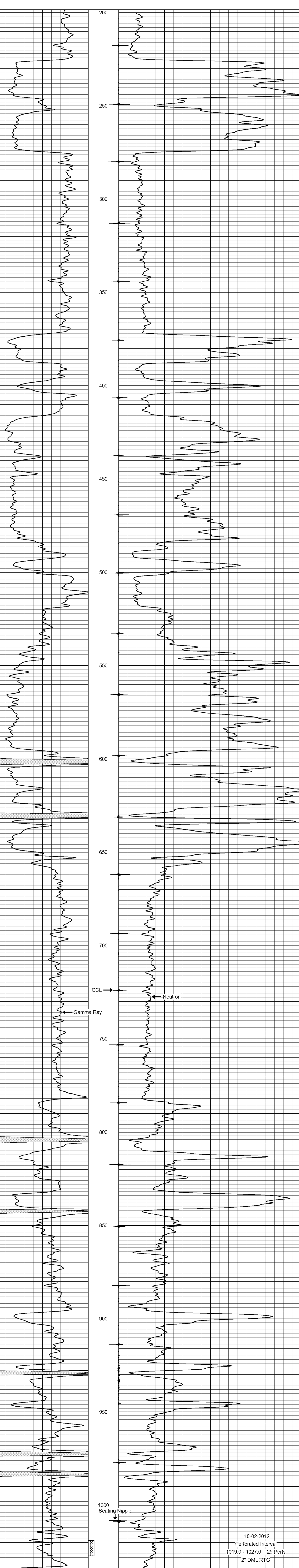
<< Fold Here >>

All interpretations are opinions based on inferences from electrical or other measurements and we cannot and do not guarantee the accuracy or correctness of any interpretation, and we shall not, except in the case of gross or willful negligence on our part, be liable or responsible for any loss, costs, damages, or expenses incurred or sustained by anyone resulting from any interpretation made by any of our officers, agents or employees. These interpretations are also subject to our general terms and conditions set out in our current Price Schedule.

Comments

Drilling Contractor :
 Finney Drilling Company

Database File: sauder10.db
 Dataset Pathname: pass1
 Presentation Format: gr-n-ccl
 Dataset Creation: Wed Sep 12 13:44:08 2012 by Log SCH 111116
 Charted by: Depth in Feet scaled 1:240



10-02-2012
 Perforated Interval
 1019.0 - 1027.0 25 Perfs
 2" DML RTG.