



MIDWEST SURVEYS
 LOGGING - PERFORATING - CONSULTING SERVICES
 P.O. Box 68, Osawatomie, KS 66064
 913.755.2128

GAMMA RAY / NEUTRON / CCL

File No. _____

Company **Altavista Energy, Inc.**

Well **Sauder No. - 16**

Field **Wildcat**

County **Coffey** State **Kansas**

Location **2475' FSL & 4125' FEL**

NE-NE-NW-SW

Sec. 14 Twp. 22s Rge. 16e

Perforated Datum **GL** Elevation **1044'**

Log Measured From **GL** K.B. NA

Drilling Measured From **GL** D.F. NA

Date **10-02-2012** Elevation **GL 1044'**

Run Number **One**

Depth Driller **1092.0**

Bottom Logged Interval **1048.0**

Top Log Interval **200.0**

Fluid Level **Fill**

Type Fluid **Water**

Density / Viscosity **NA**

Salinity - PPM Cl **NA**

Max Recorded Temp **NA**

Estimated Cement Top **NA**

Equipment No. **104** Location **Osawatomie**

Recorded By **Gary Windisch**

Witnessed By **Doug Evans**

BORE-HOLE RECORD		CASING RECORD	
NO.	BIT FROM TO	SIZE	WGT. FROM TO
One	12.25' 0.0 47.10	7.00" 2.875"	19# 0.0 6.5#
Two	5.875' 47.10 1092.0	4.710" 2.875"	0.0 0.0
		Batch	Set
			At

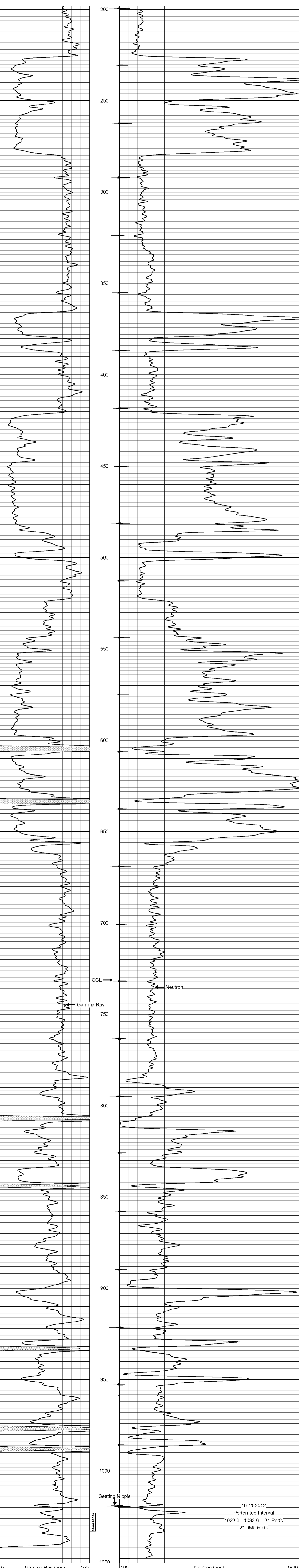
<<< Fold Here >>>

All interpretations are opinions based on inferences from electrical or other measurements and we cannot and do not guarantee the accuracy or correctness of any interpretation, and we shall not, except in the case of gross or willful negligence on our part, be liable or responsible for any loss, costs, damages, or expenses incurred or sustained by anyone resulting from any interpretation made by any of our officers, agents or employees. These interpretations are also subject to our general terms and conditions set out in our current Price Schedule.

Comments

Drilling Contractor :
Finney Drilling Company

Database File: sauder16.db
 Dataset Pathname: pass1
 Presentation Format: gr-n-ccl
 Dataset Creation: Tue Oct 02 13:46:42 2012 by Log SCH 111116
 Charted by: Depth in Feet scaled 1:240



10-11-2012
 Perforated Interval
 1023.0 - 1033.0 31 Perfs
 2" DML RTG