



SUPERIOR
Hays,
Kansas

COMPENSATED
NEUTRON / DENSITY
LOG

Company SIROKY OIL MANAGEMENT
 Well KOVACH #1
 Field IUKA-CARMI EAST
 County PRATT
 State KANSAS

Company SIROKY OIL MANAGEMENT
 Well KOVACH #1
 Field IUKA-CARMI EAST
 County PRATT State KANSAS

Location: 660' FSL & 2310' FEL
 API # : 15-151-22390-0000
 Other Services DIL/MEL

SEC 20 TWP 27S RGE 12W
 Permanent Datum GROUND LEVEL Elevation 1814
 Log Measured From KELLY BUSHING 12' A.G.L.
 Drilling Measured From KELLY BUSHING
 Elevation
 K.B. 1826
 D.F. 1824
 G.L. 1814

Date	5/16/12
Run Number	ONE
Depth Driller	4500
Depth Logger	4506
Bottom Logged Interval	4482
Top Log Interval	2700
Casing Driller	10 3/4" @ 239
Casing Logger	239
Bit Size	7 7/8
Type Fluid in Hole	CHEMICAL MUD
Density / Viscosity	9.4/46
pH / Fluid Loss	10.0/10.0
Source of Sample	FLOWLINE
Rim @ Meas. Temp	.65 @ 83F
Rmf @ Meas. Temp	.48 @ 83F
Rmc @ Meas. Temp	.78 @ 83F
Source of Rmf / Rmc	MEASURED
Rim @ BHT	.44 @ 120F
Time Circulation Stopped	2 HOURS
Time Logger on Bottom	
Maximum Recorded Temperature	120F
Equipment Number	680
Location	HAYS, KS.
Recorded By	JASON CAPPELLUCCI
Witnessed By	SEAN DEENIHAN

<<< Fold Here >>>

All interpretations are opinions based on inferences from electrical or other measurements and we cannot and do not guarantee the accuracy or correctness of any interpretation, and we shall not, except in the case of gross or willful negligence on our part, be liable or responsible for any loss, costs, damages, or expenses incurred or sustained by anyone resulting from any interpretation made by any of our officers, agents or employees. These interpretations are also subject to our general terms and conditions set out in our current Price Schedule.

Comments

THANK YOU FOR USING SUPERIOR WELL SERVICE (785) 628-6395
 DIRECTIONS
 PRATT, KS. - INTERSECTION OF HWY 400 & 61 GO 2 N. TO NE 20TH ST.
 3 E. N. INTO

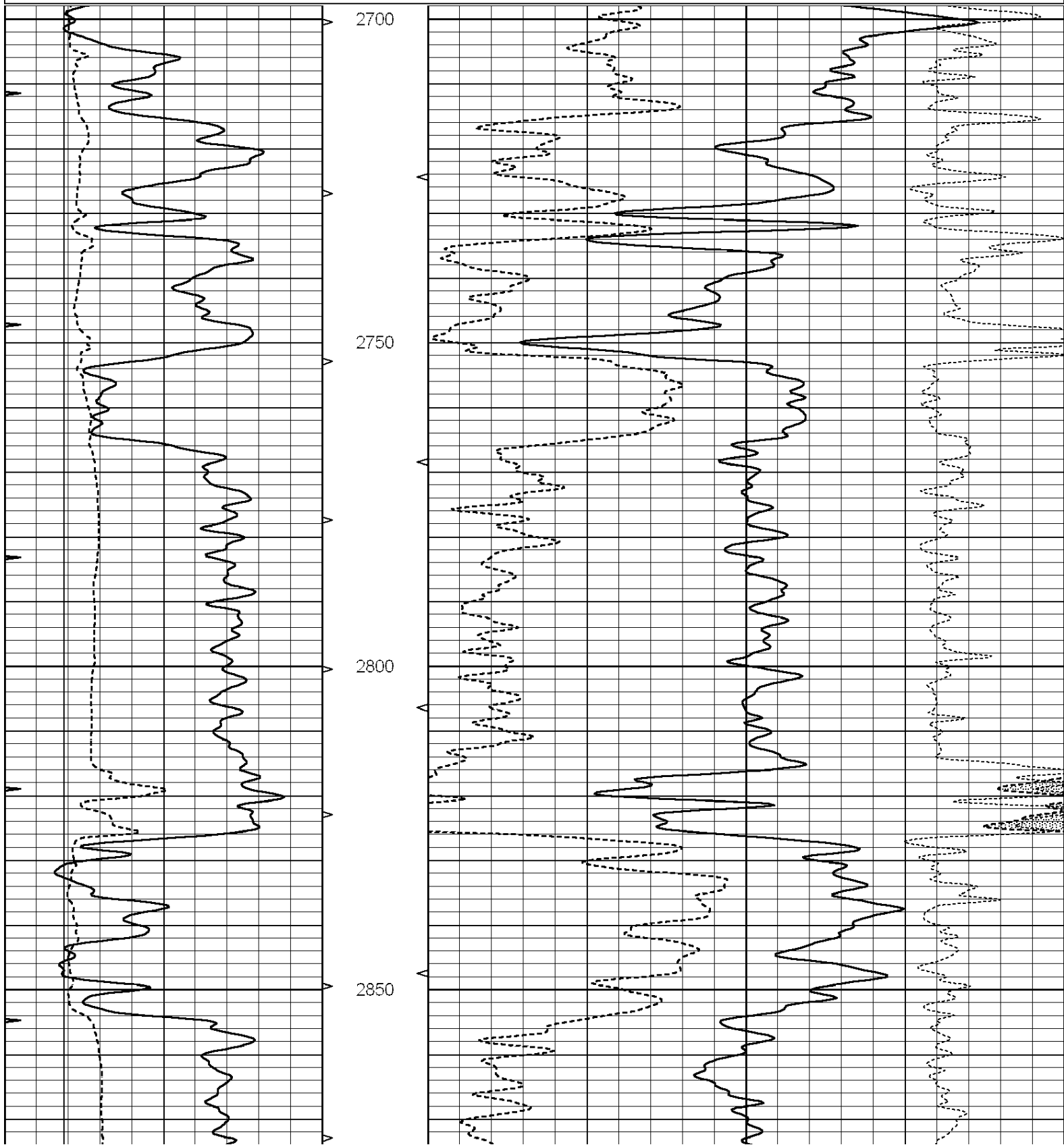


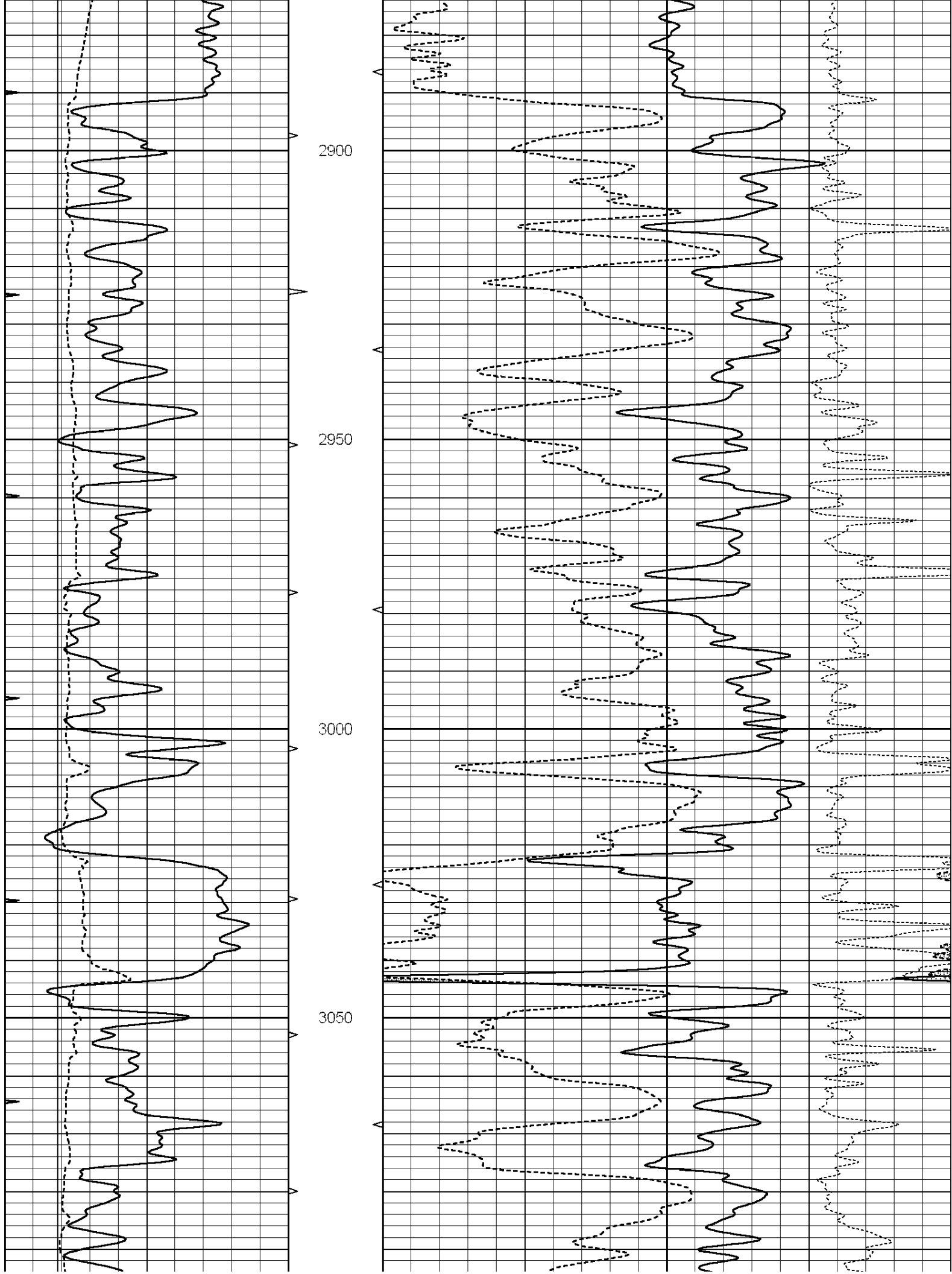
SUPERIOR
Hays,
Kansas

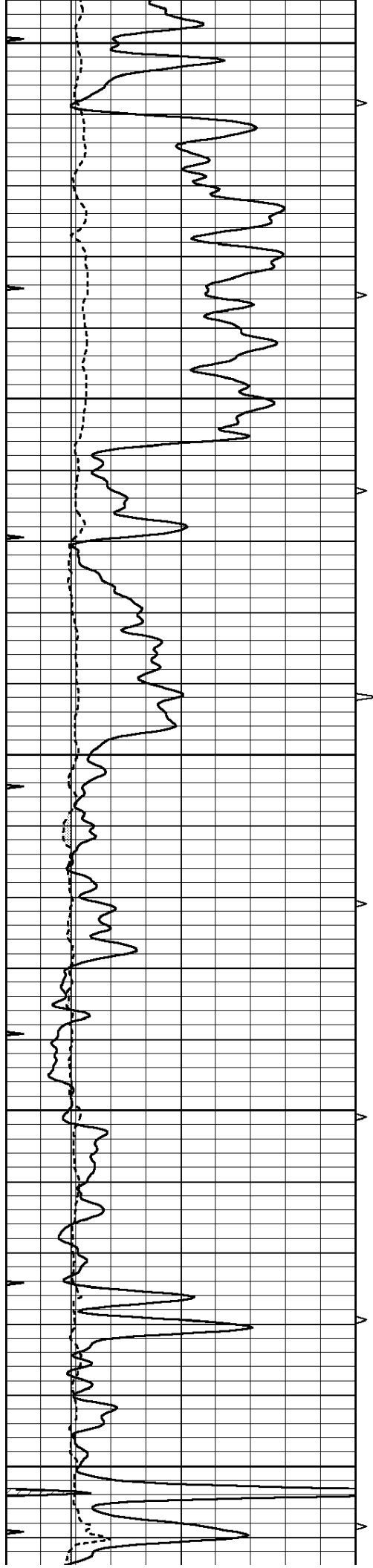
MAIN SECTION

Database File: 009073ddn.db
 Dataset Pathname: pass3.1
 Presentation Format: _den_neu
 Dataset Creation: Wed May 16 11:52:00 2012 by Calc Open-Cased 090629
 Charted by: Depth in Feet scaled 1:240

0	GAMMA RAY (GAPI)	150	AVTX	30	COMPENSATED DENSITY (pu)	-10
6	CALIPER (in)	16	10 (ft3)	0 30	COMPENSATED NEUTRON (pu)	-10
0	MINMK	20	BVTX		-0.25 CORRECTION (g/cc)	0.25
			0 (ft3)	10		







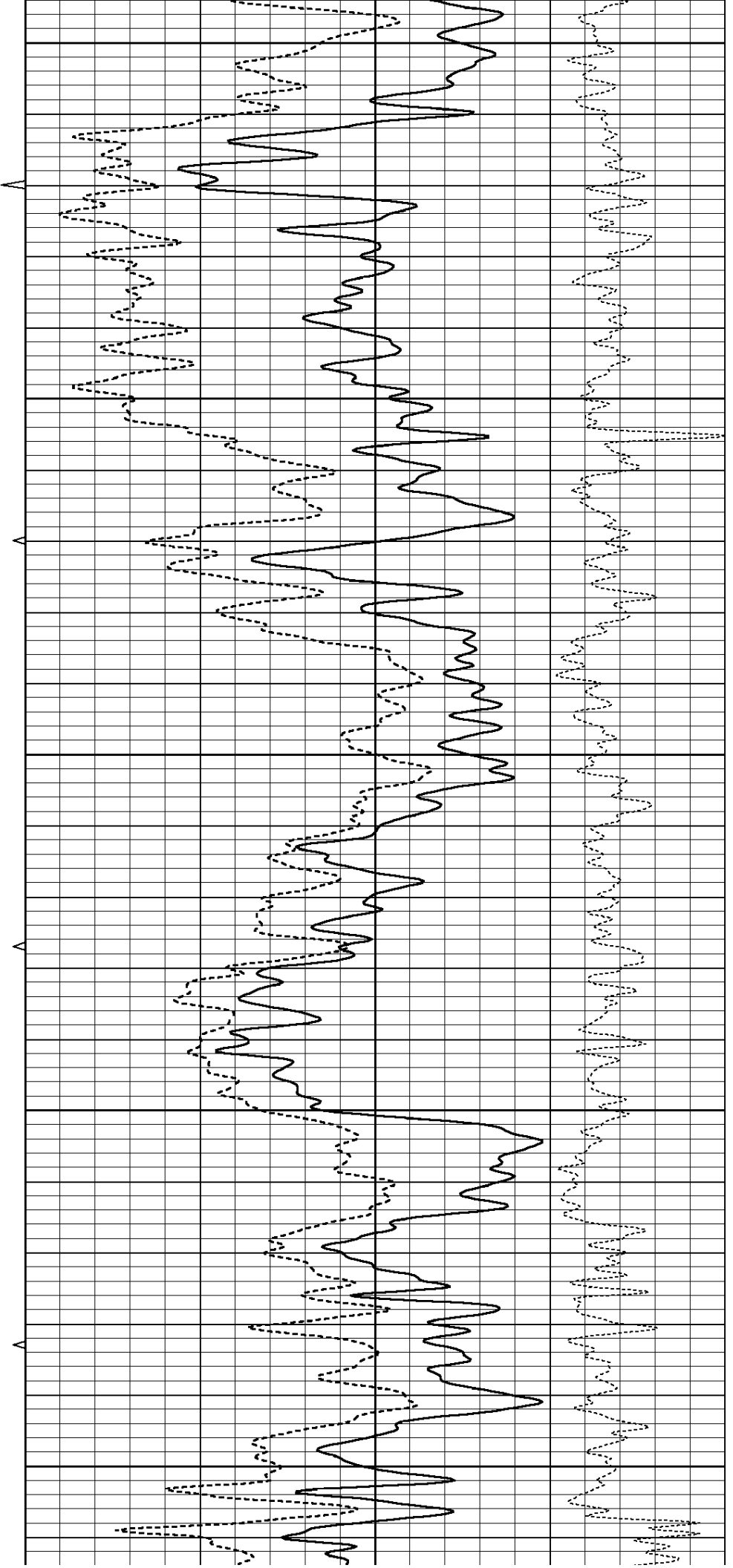
3100

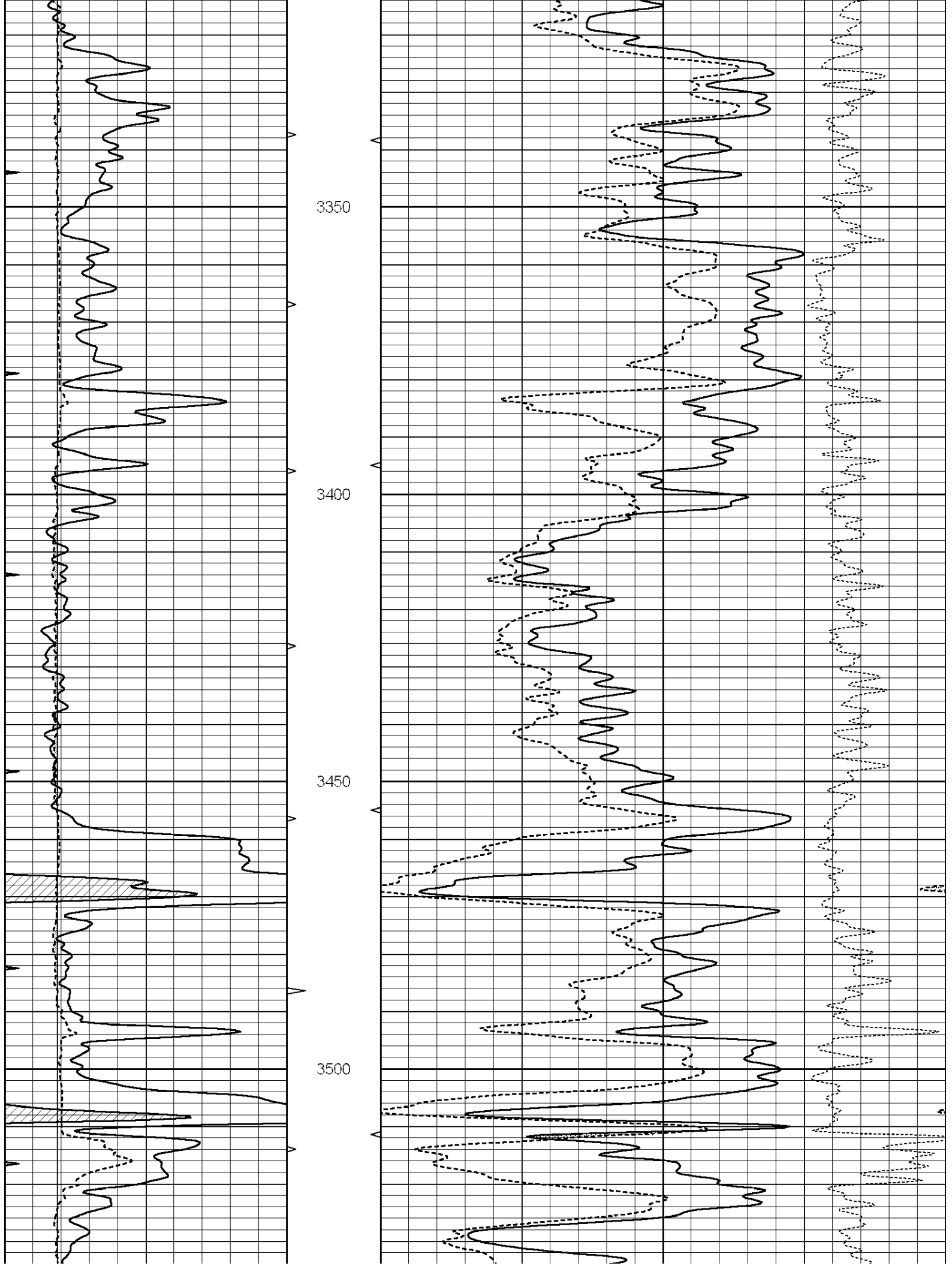
3150

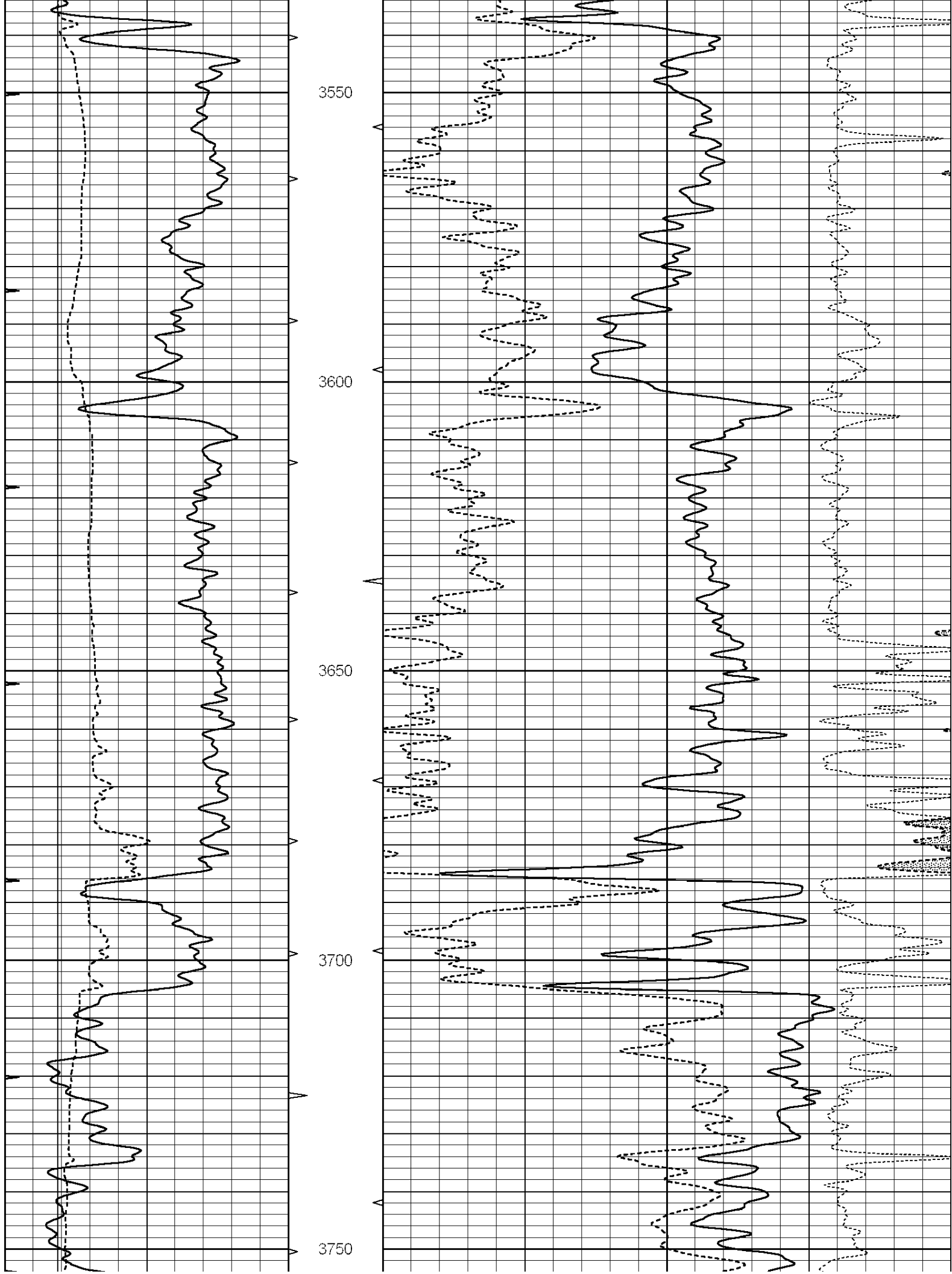
3200

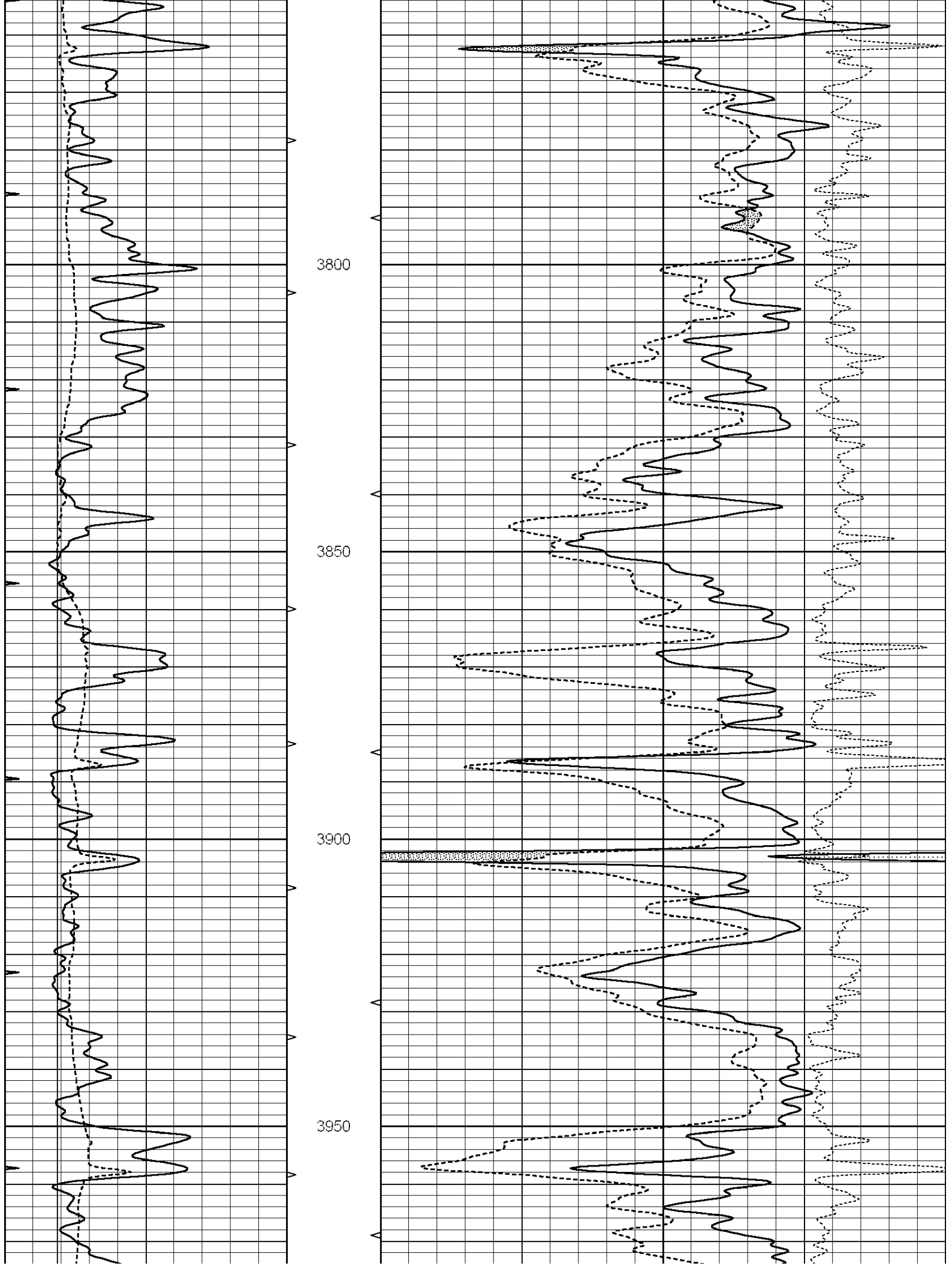
3250

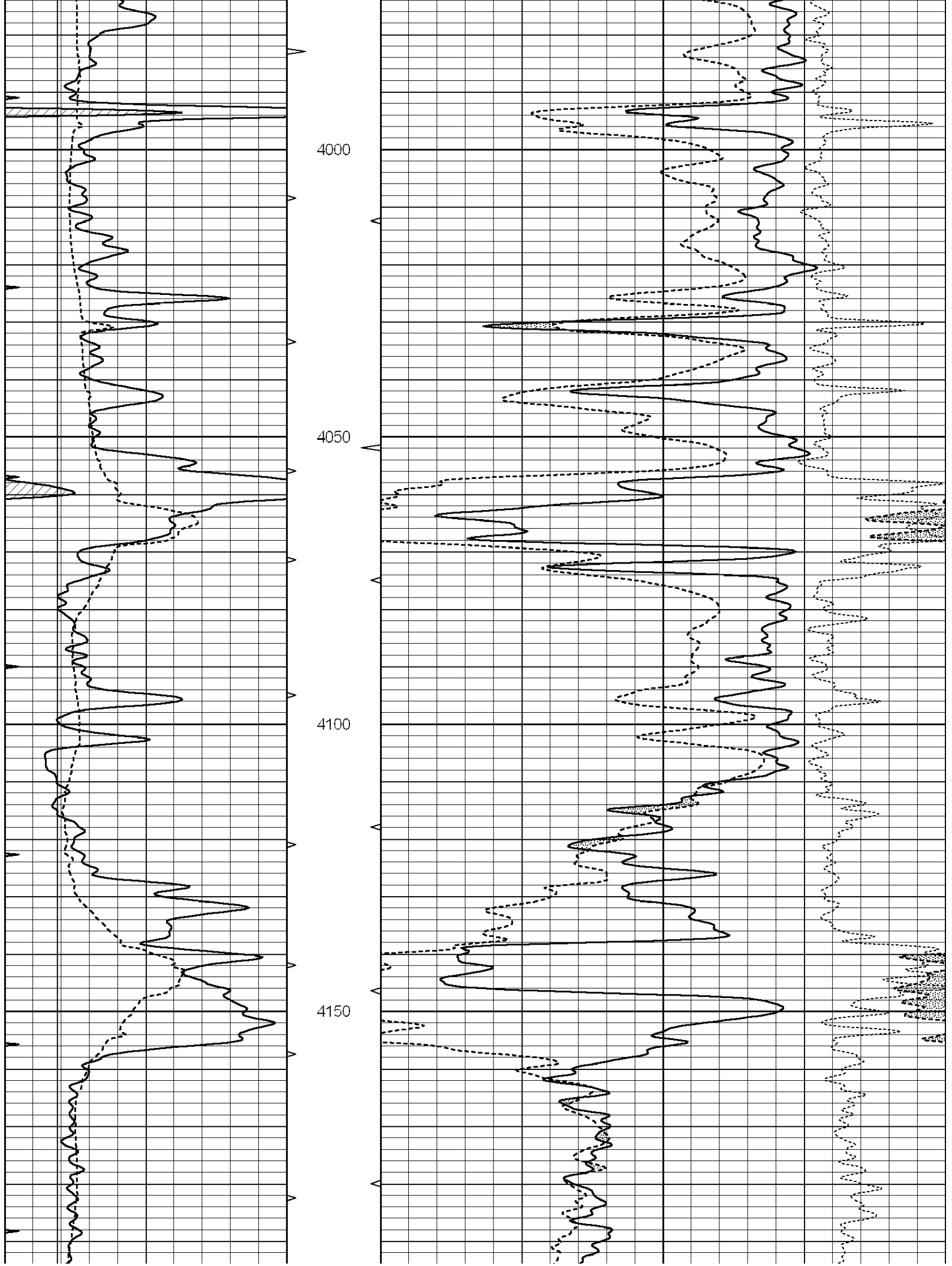
3300

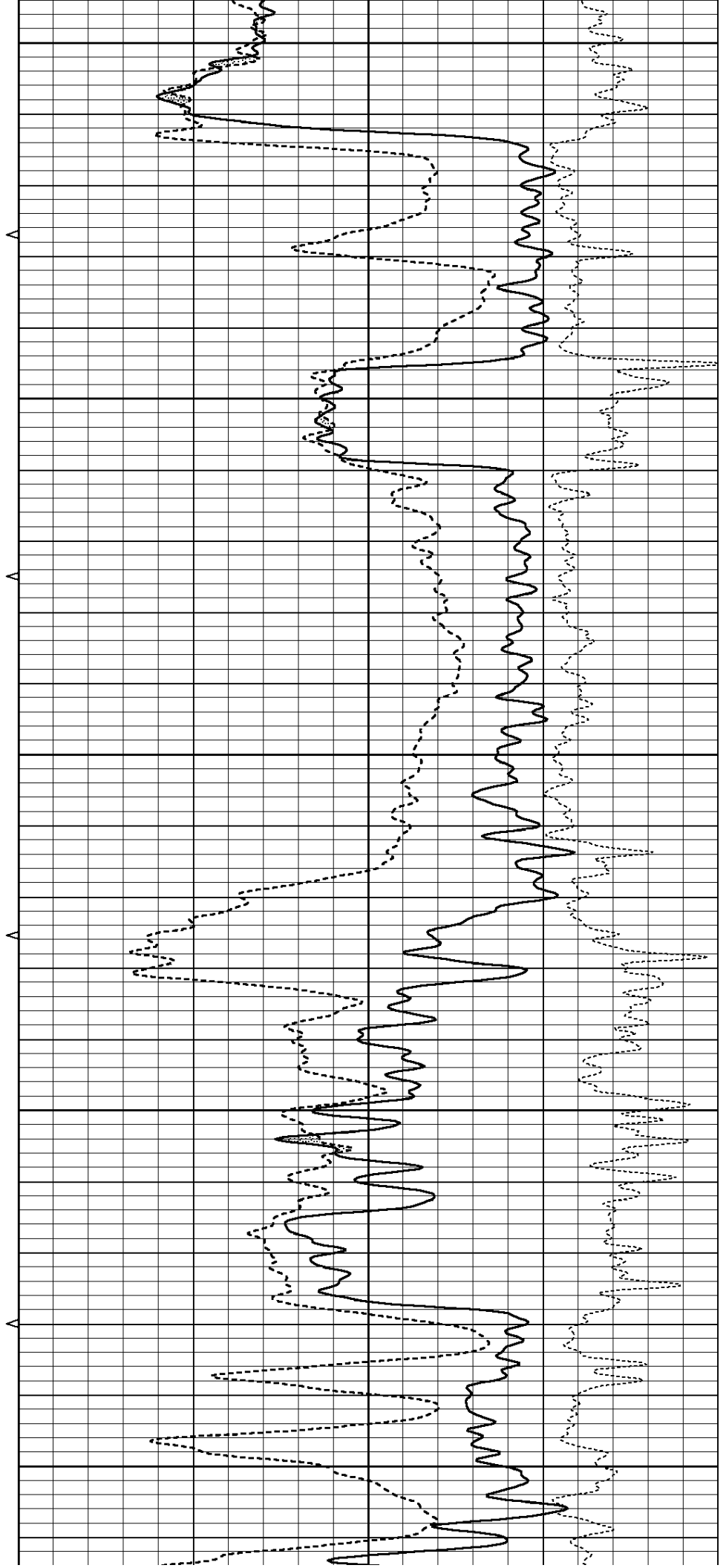
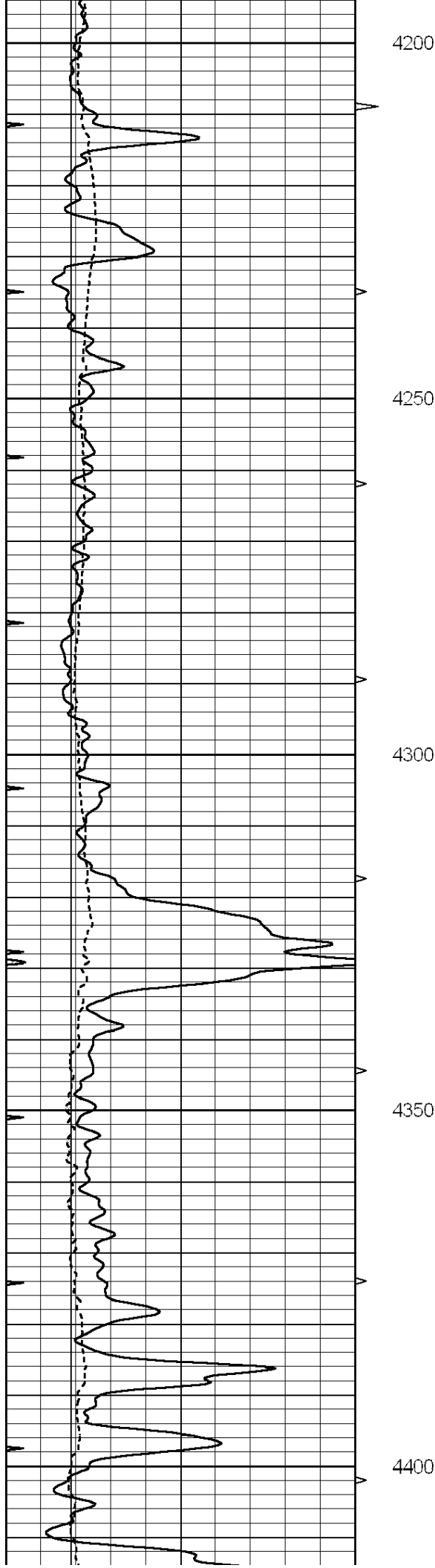


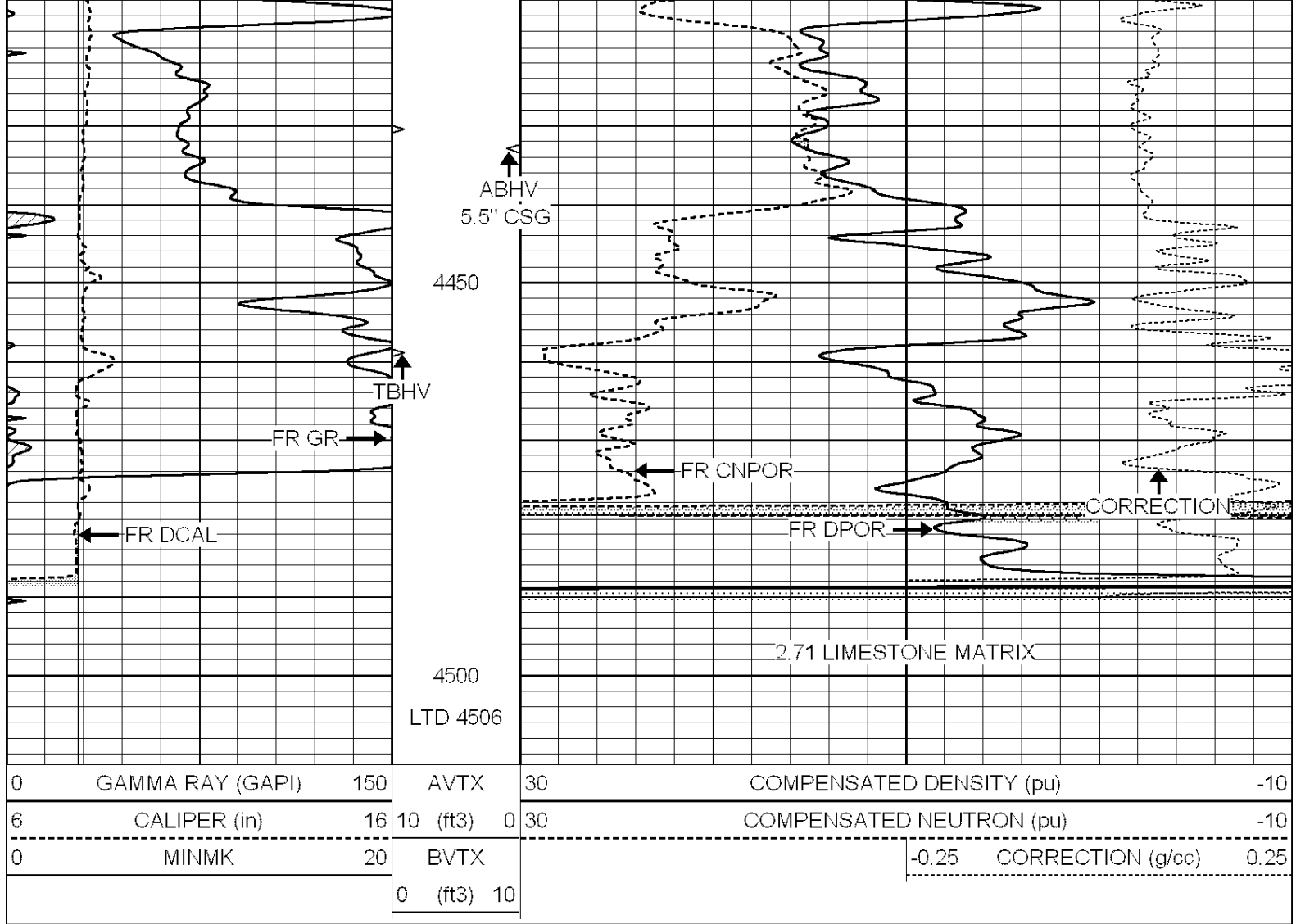










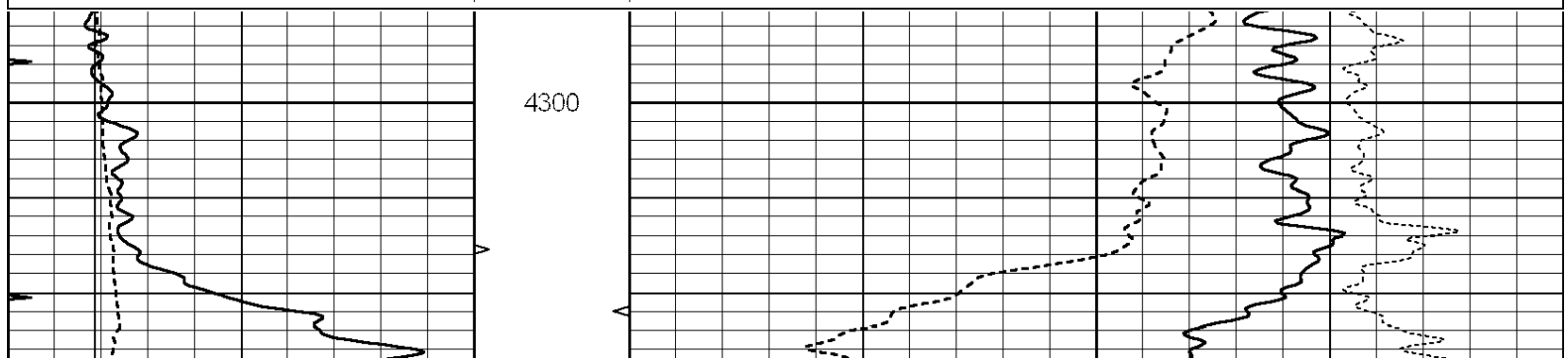


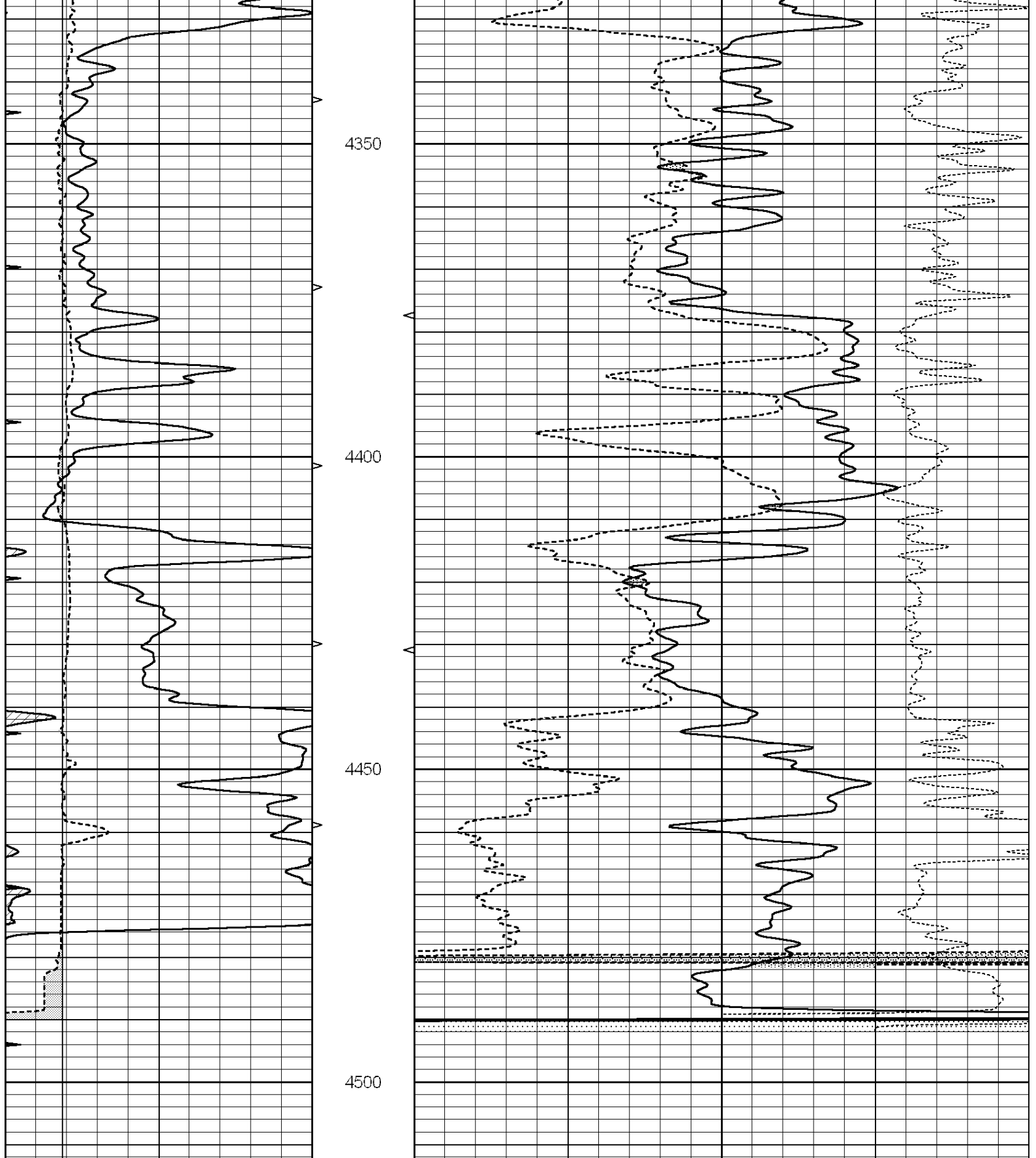
SUPERIOR
Hays,
Kansas

REPEAT SECTION

Database File: 009073ddn.db
 Dataset Pathname: pass2.2
 Presentation Format: _den_neu
 Dataset Creation: Wed May 16 11:43:11 2012 by Calc Open-Cased 090629
 Charted by: Depth in Feet scaled 1:240

0	GAMMA RAY (GAPI)	150	AVTX	30	COMPENSATED DENSITY (pu)	-10
6	CALIPER (in)	16	10 (ft3)	0 30	COMPENSATED NEUTRON (pu)	-10
0	MINMK	20	BVTX		-0.25	CORRECTION (g/cc) 0.25
			0 (ft3)	10		





0	GAMMA RAY (GAPI)	150	AVTX	30	COMPENSATED DENSITY (pu)	-10
6	CALIPER (in)	16	10 (ft3)	0 30	COMPENSATED NEUTRON (pu)	-10
0	MINMK	20	BVTX		-0.25 CORRECTION (g/cc)	0.25
			0 (ft3)	10		

Calibration Report

Dual Induction Calibration Report

Serial-Model: PROBE8-DILG
 Surface Cal Performed: Fri Aug 01 06:33:19 2008
 Downhole Cal Performed: Mon Jul 28 11:08:27 2008
 After Survey Verification Performed: Mon Jul 28 11:08:27 2008

Surface Calibration

Loop:	Readings			References			Results	
	Air	Loop		Air	Loop		m	b
Deep	0.015	0.648	V	0.000	400.000	mmho/m	632.616	-9.730
Medium	0.029	0.796	V	0.000	464.000	mmho/m	605.049	-17.680
Internal:	Zero	Cal		Zero	Cal		m	b
Deep	0.017	0.657	V	0.000	400.000	mmho/m	625.153	-10.619
Medium	0.016	0.757	V	0.000	464.000	mmho/m	625.992	-9.739

Downhole Calibration

	Readings			References			Results	
	Zero	Cal		Zero	Cal		m'	b'
Deep	0.000	0.000	mmho/m	2.011	405.777	mmho/m	1.000	0.000
Medium	0.000	0.000	mmho/m	7.590	503.393	mmho/m	1.000	0.000
LL3		7.500	V		1500.000	Ohm-m		
		0.000	V		20.000	Ohm-m		
		-7.200	V		3800.000	mmho-m		

After Survey Verification

	Readings			Targets			Results	
	Zero	Cal		Zero	Cal		m'	b'
Deep	0.000	0.000	mmho/m	0.000	0.000	mmho/m	0.000	0.000
Medium	0.000	0.000	mmho/m	0.000	0.000	mmho/m	0.000	0.000
LL3		1.000	Ohm-m		1.000	Ohm-m		
		0.000	Ohm-m		0.000	Ohm-m		
		1.000	mmho-m		1.000	mmho-m		

Compensated Density Calibration Report

Serial-Model: GEAR4-GEARHART
 Source / Verifier: 143 / 143
 Master Calibration Performed: Mon Mar 19 19:07:19 2012

Master Calibration

	Density		Far Detector	Near Detector	cps
		g/cc			
Magnesium	1.710	g/cc	1015.91	497.51	cps
Aluminum	2.600	g/cc	227.67	350.20	cps
Spine Angle = 76.79			Density/Spine Ratio = 0.579		
	Size		Reading		
Small Ring	8.00	in	2.25	V	
Large Ring	14.00	in	4.37	V	

Compensated Neutron Calibration Report

Serial Number: 6I
 Tool Model: G

CALIBRATION

Detector	Readings	Target	Normalization
Short Space	1.00 cps	1.00 cps	1.0000
Long Space	1.00 cps	1.00 cps	1.0000

Gamma Ray Calibration Report

Serial Number:	#8
Tool Model:	OPEN
Performed:	Mon Jun 13 16:56:43 2011
Calibrator Value:	150.0 GAPI
Background Reading:	0.0 cps
Calibrator Reading:	175.0 cps
Sensitivity:	0.8371 GAPI/cps