



DIGITAL LOG (785) 625-3858

Dual Induction Log

15-155-21,589-00-00

API No.

Company Val Energy, Inc.

Well Thalmann No. 1-19

Field Friendship

County Reno State Kansas

Location

S2 NW NE NE  
445' FNL & 990' FEL

Sec: 19 Twp: 25S Rge: 4W

Other Services  
CNL/CDL  
MEL

Permanent Datum Ground Level Elevation 1516

Log Measured From Kelly Bushing 11 Ft. Above Perm. Datum

Drilling Measured From Kelly Bushing

Elevation

K.B. 1527  
D.F.  
G.L. 1516

Date 5/21/2012

Run Number One

Depth Driller 4110

Depth Logger 4105

Bottom Logged Interval 4104

Top Log Interval 200

Casing Driller 8.625 @ 224

Casing Logger 221

Bit Size 7.875

Type Fluid in Hole Chemical

Salinity, ppm CL 3000

Density / Viscosity 9.5 53

pH / Fluid Loss 11.5 9.6

Source of Sample Flowline

Rm @ Meas. Temp 1.02 @ 72

Rmf @ Meas. Temp .77 @ 72

Rmc @ Meas. Temp 1.38 @ 72

Source of Rmf / Rmc Charts

Rm @ BHT .63 @ 117

Operating Rig Time 4 1/2 Hours

Max Rec. Temp. F 117

Equipment Number 108

Location Hays

Recorded By J. Long

Witnessed By Zeb Stewart

<<< Fold Here >>>

All interpretations are opinions based on inferences from electrical or other measurements and we cannot and do not guarantee the accuracy or correctness of any interpretation, and we shall not, except in the case of gross or willful negligence on our part, be liable or responsible for any loss, costs, damages, or expenses incurred or sustained by anyone resulting from any interpretation made by any of our officers, agents or employees. These interpretations are also subject to our general terms and conditions set out in our current Price Schedule.

Comments

Thank you for using Log-Tech, Inc.  
(785) 625-3858

Yoder (Highway 96 & Yoder Road), 2 1/2 South to Arlington Road, 4 East to Willison Road,  
2 South to Castleton Road, 1/4 West, North Into

Database File: c:\warrior\data\val\_thalmann no. 1-19\val\_thalmann\_1-19hd.db  
Dataset Pathname: dil\valstck  
Presentation Format: dil2in  
Dataset Creation: Mon May 21 22:17:55 2012  
Charted by: Depth in Feet scaled 1:600

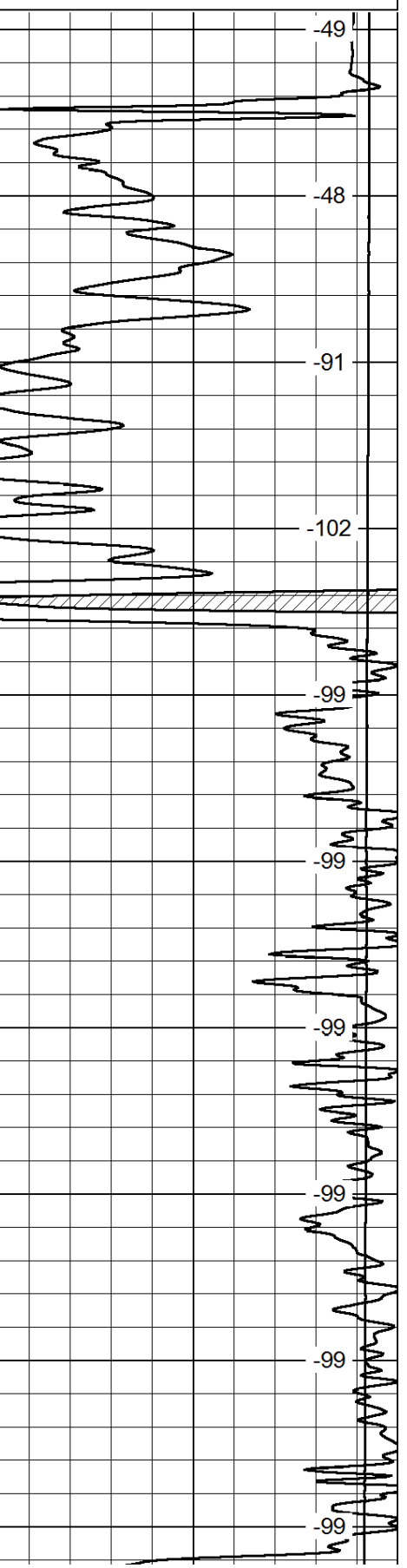
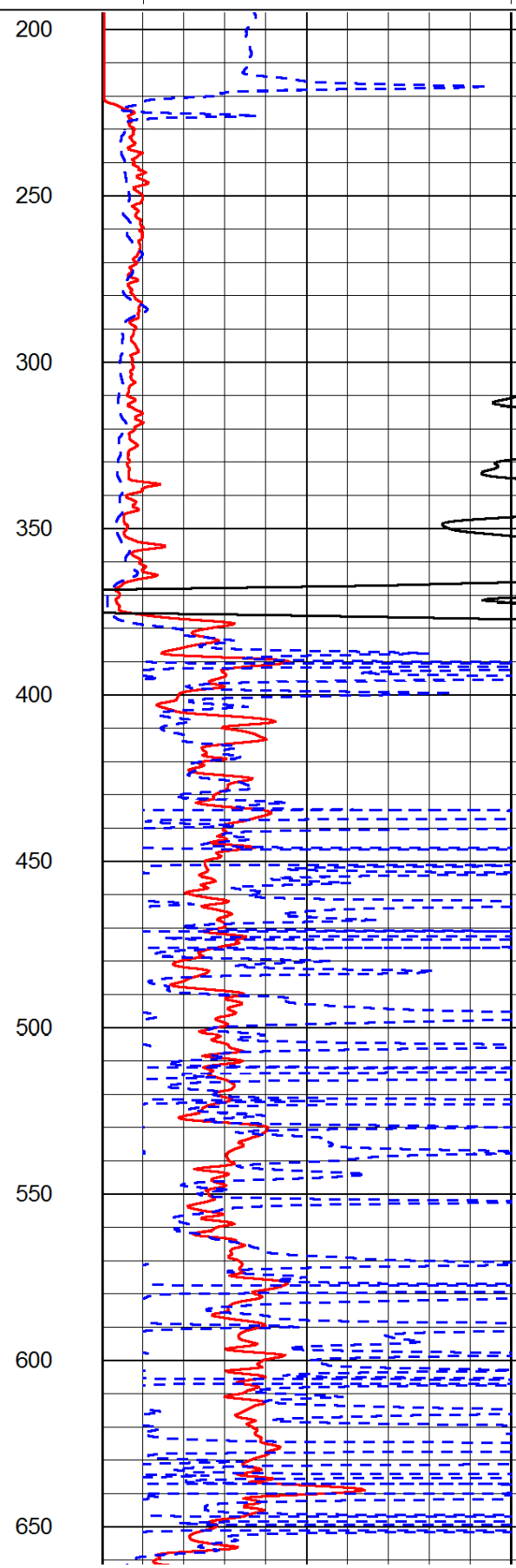
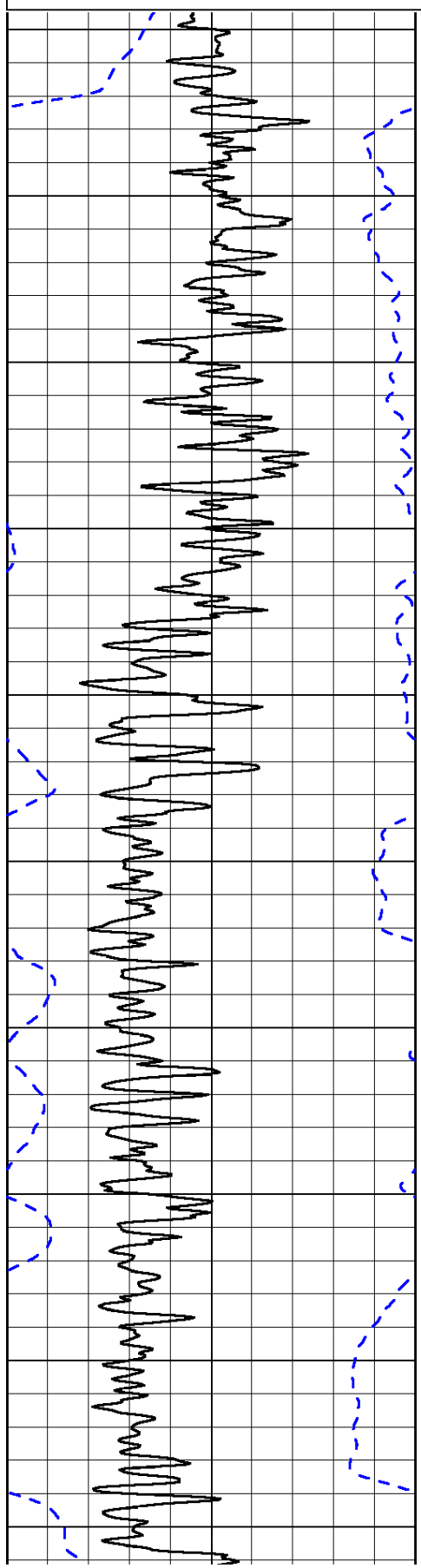
0	Gamma Ray	150
-200	SP (mV)	0

0	Shallow Resistivity	50
0	Deep Resistivity	50

LSPD

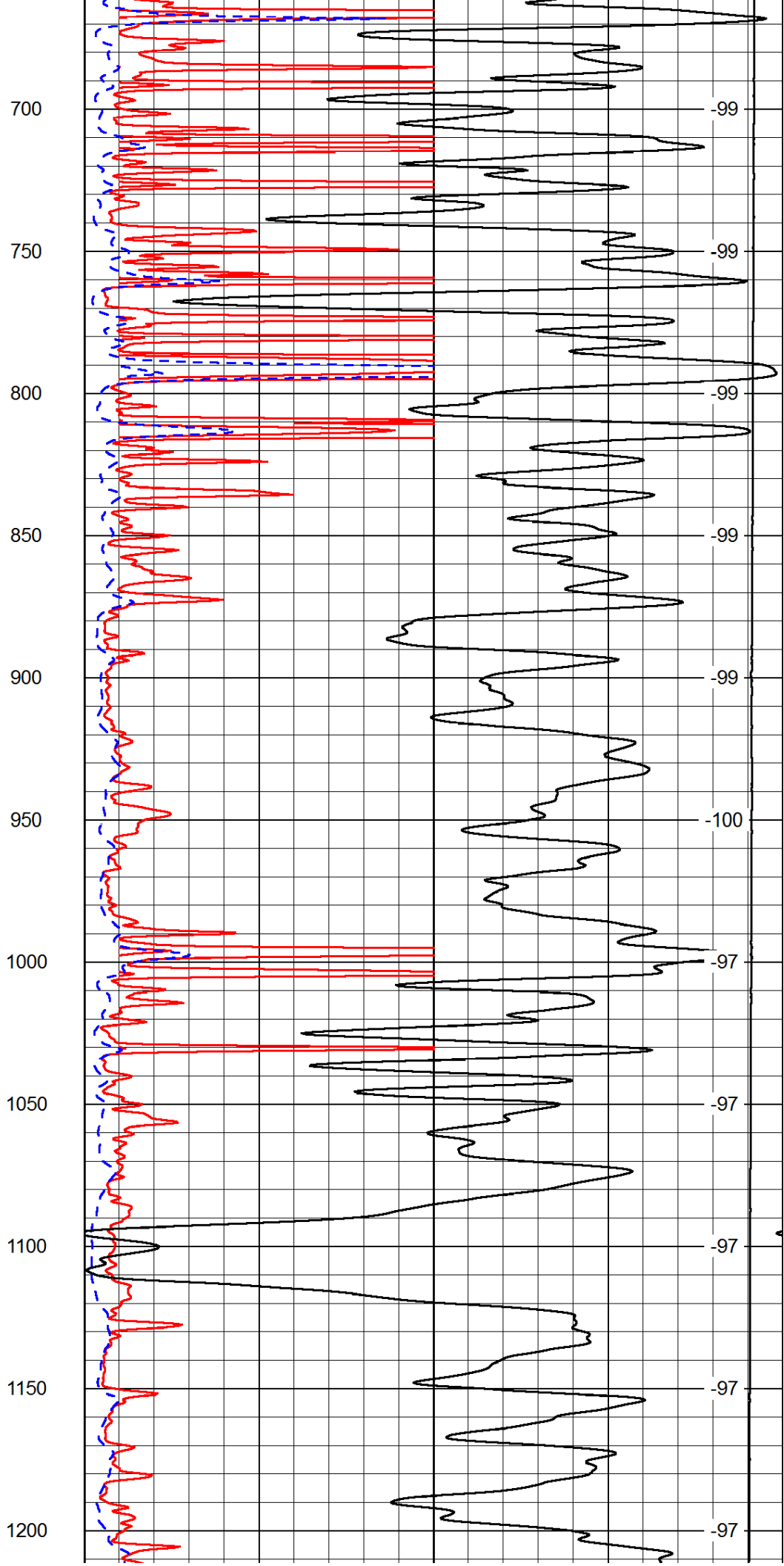
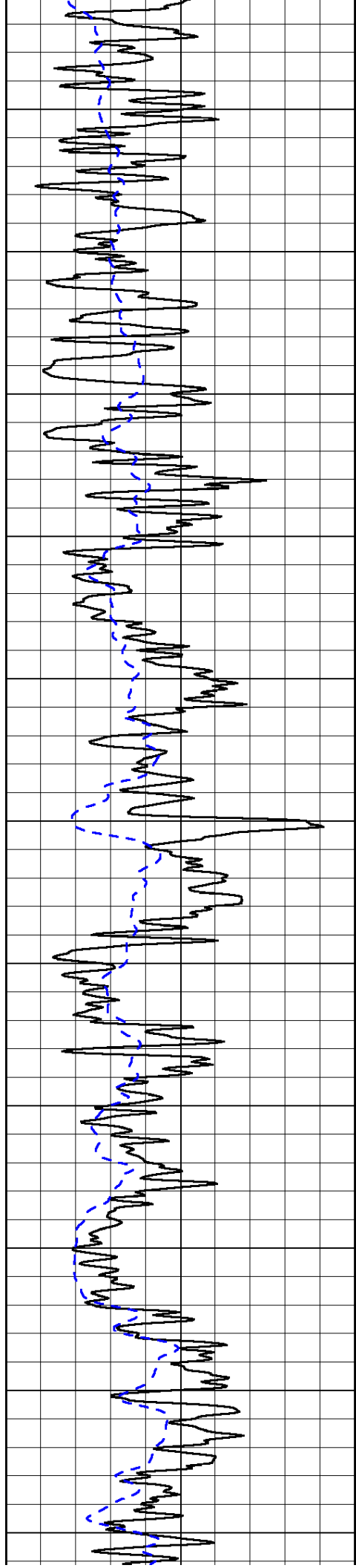
1000	Conductivity	0
15000	Line Tension	0

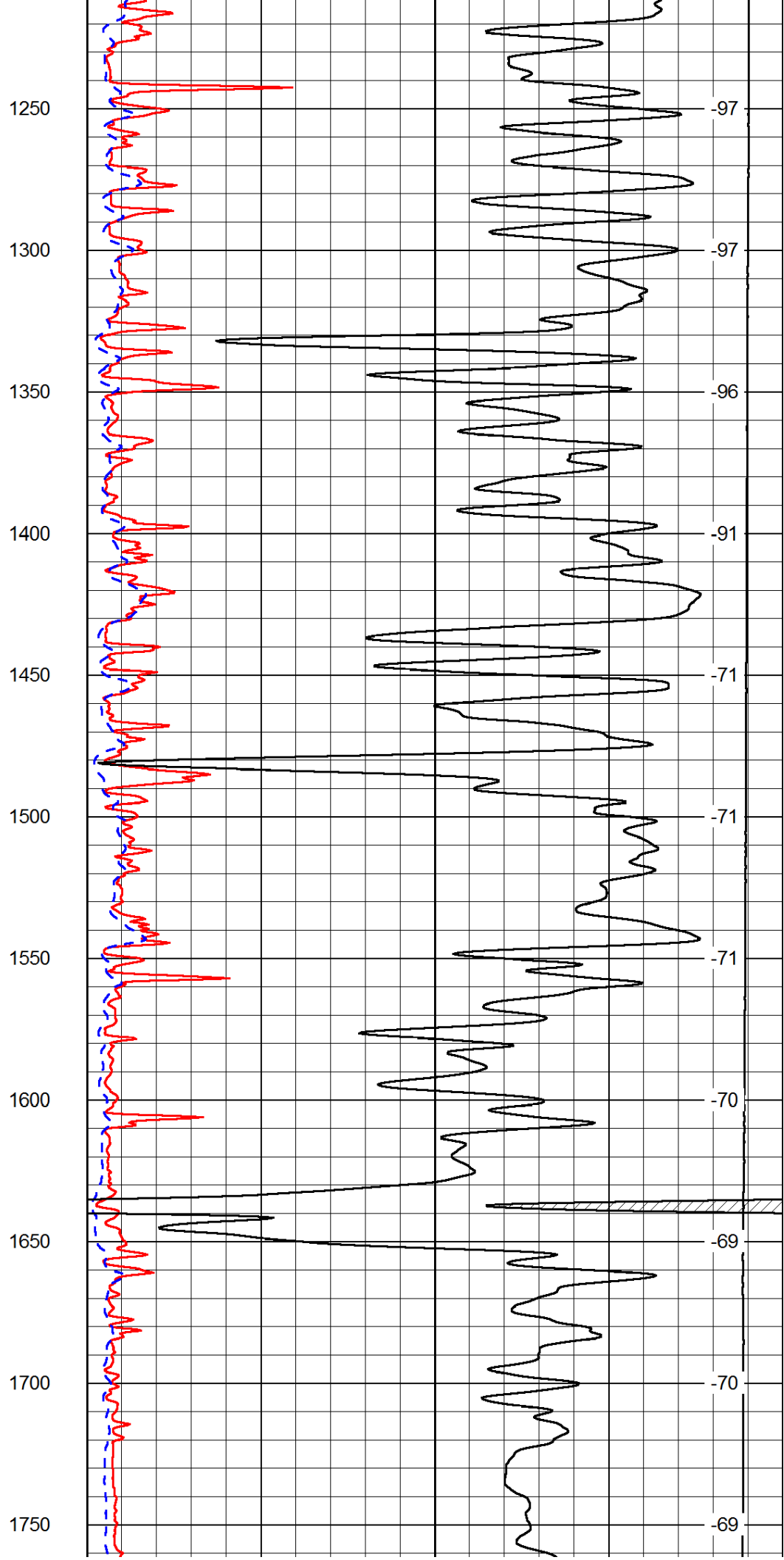
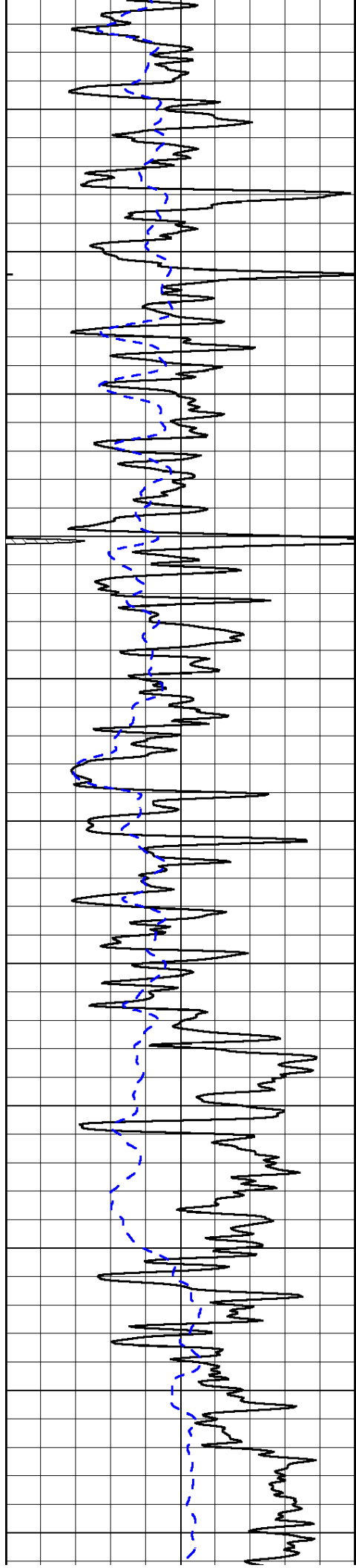
50	Shallow Resistivity	500
50	Deep Resistivity	500

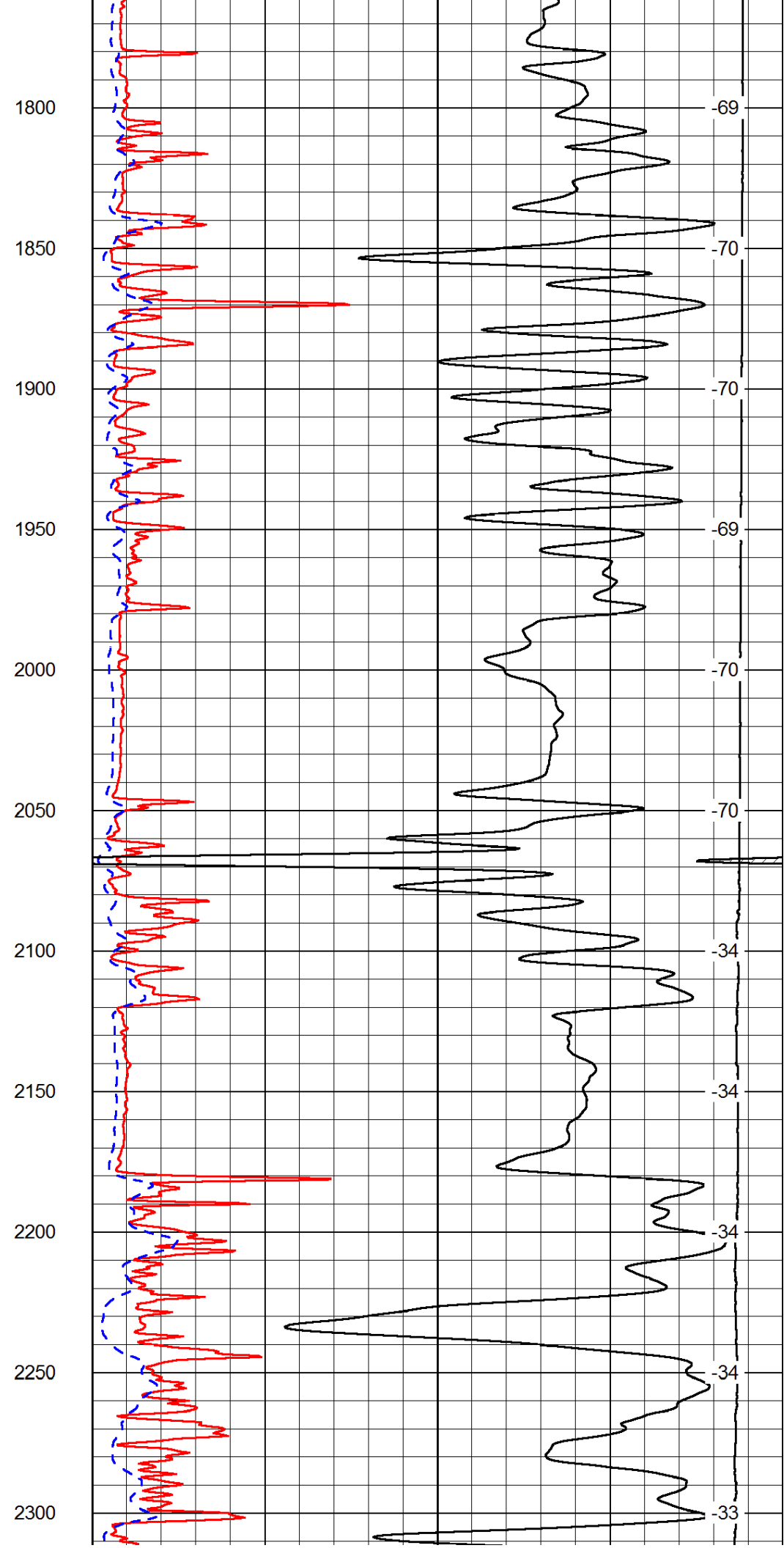
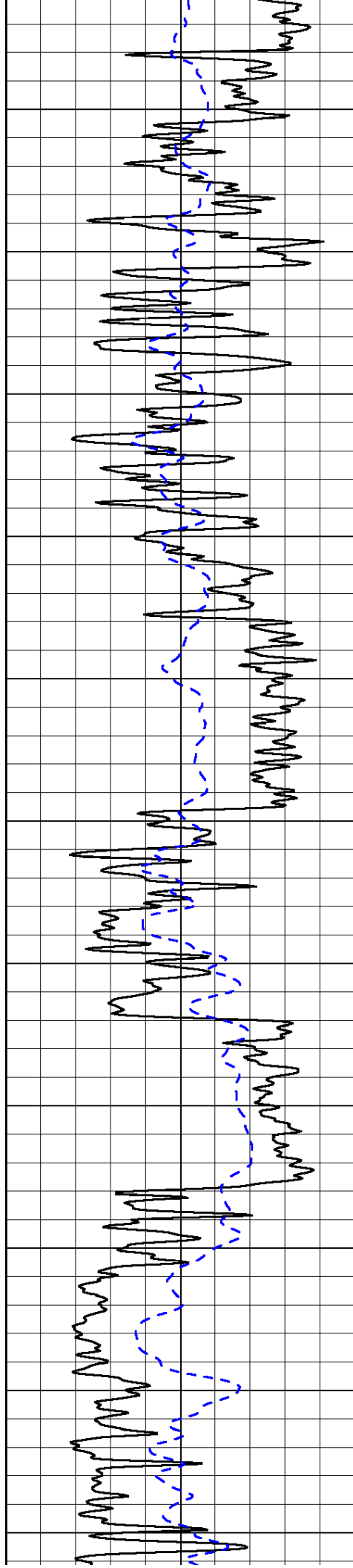


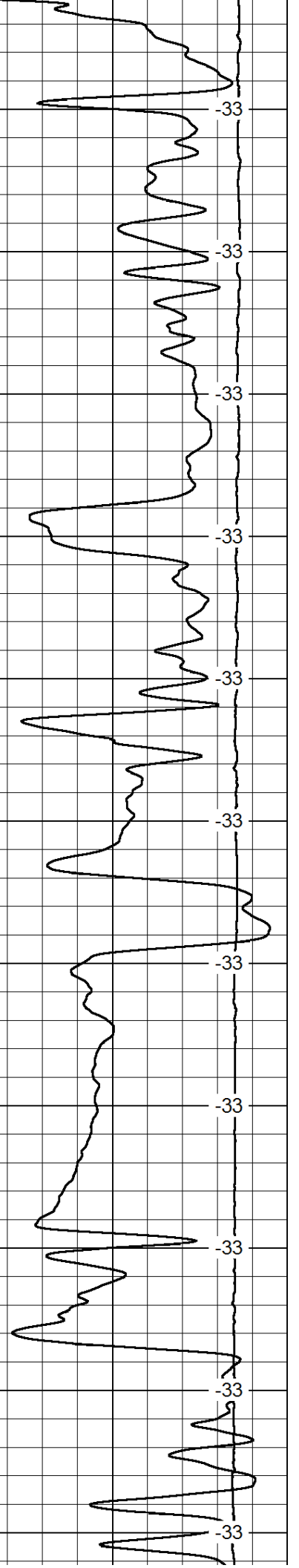
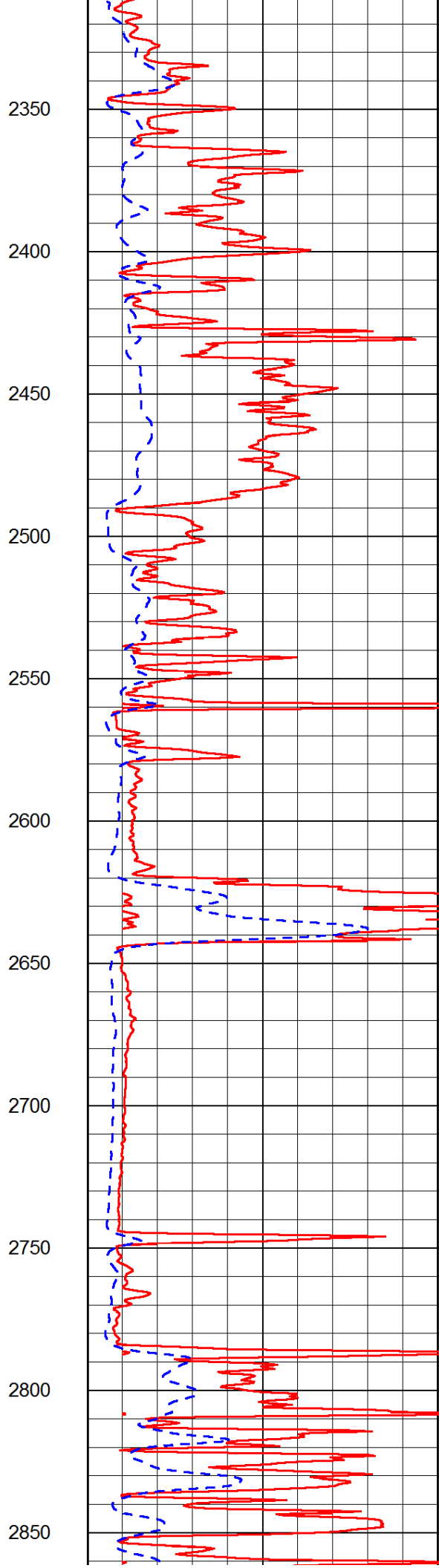
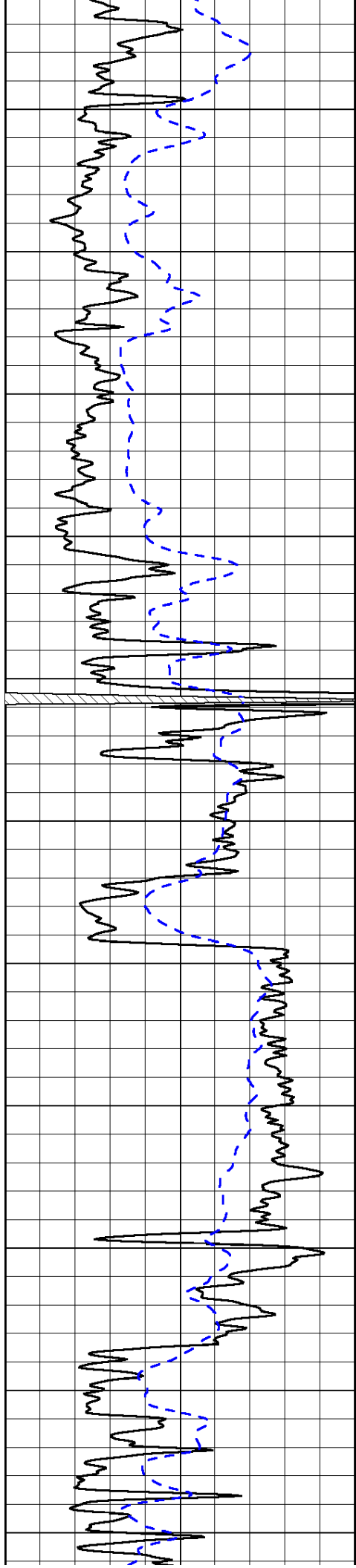
200  
250  
300  
350  
400  
450  
500  
550  
600  
650

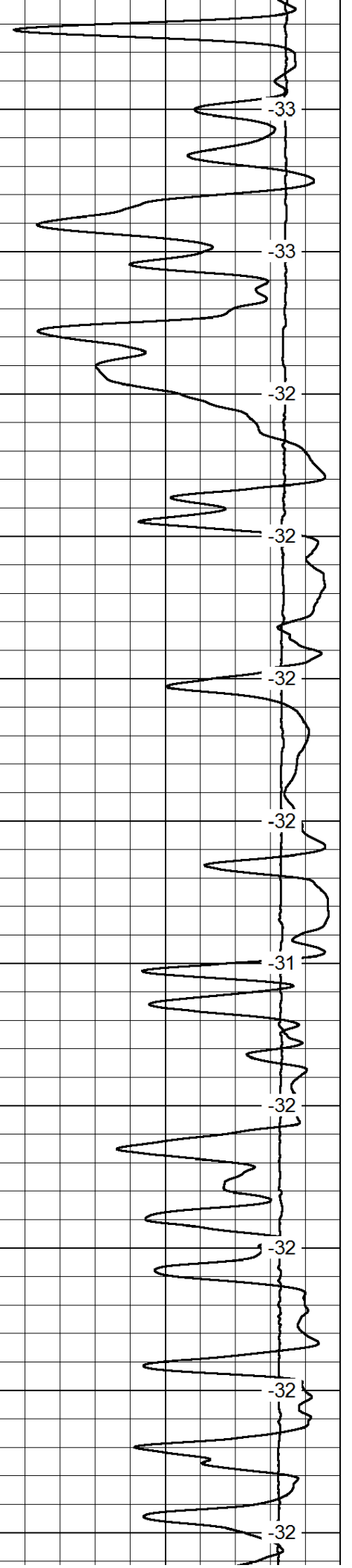
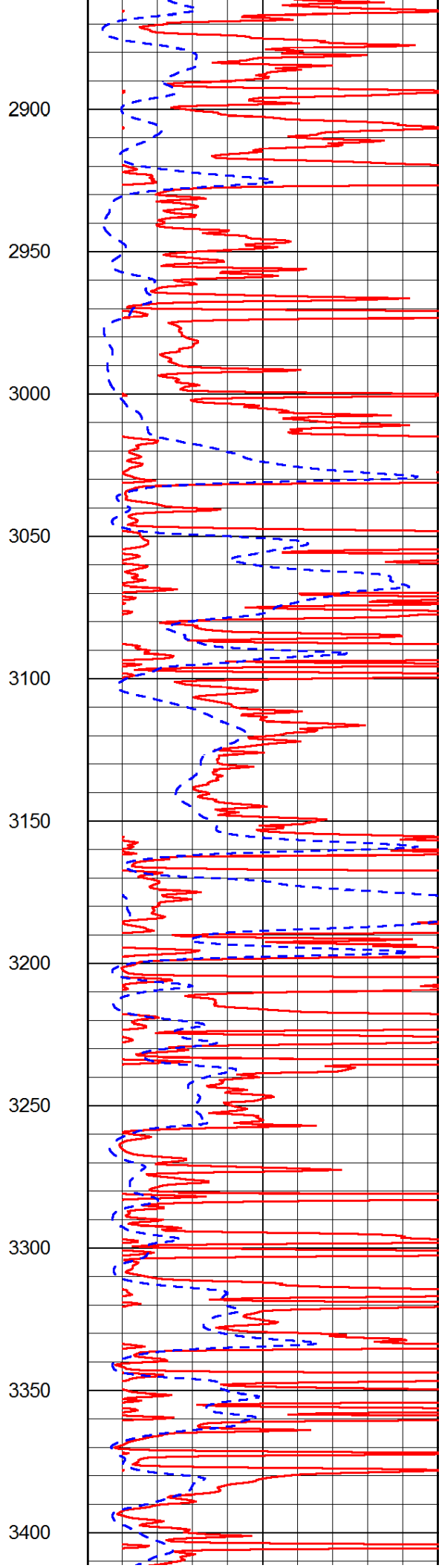
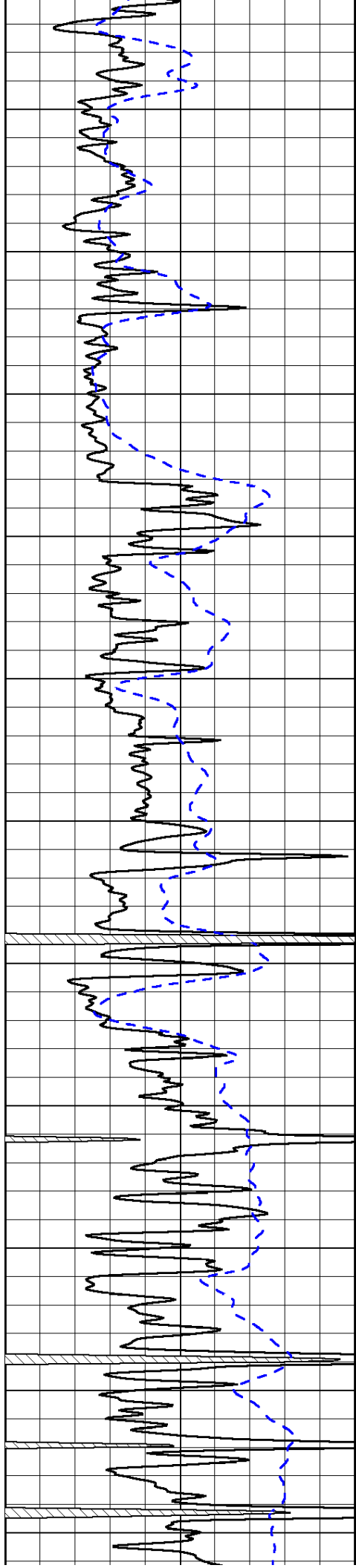
-49  
-48  
-91  
-102  
-99  
-99  
-99  
-99  
-99  
-99  
-99

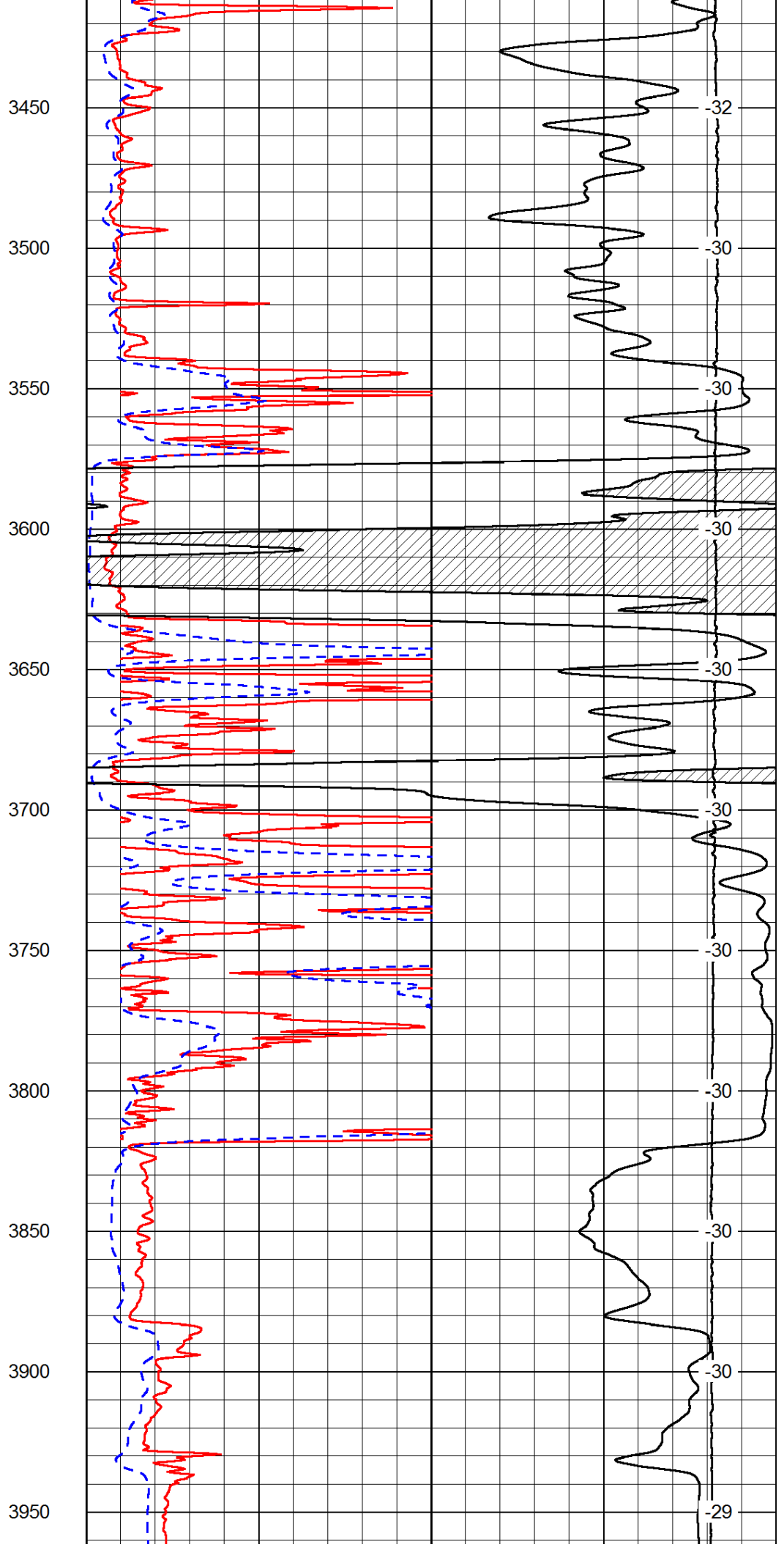
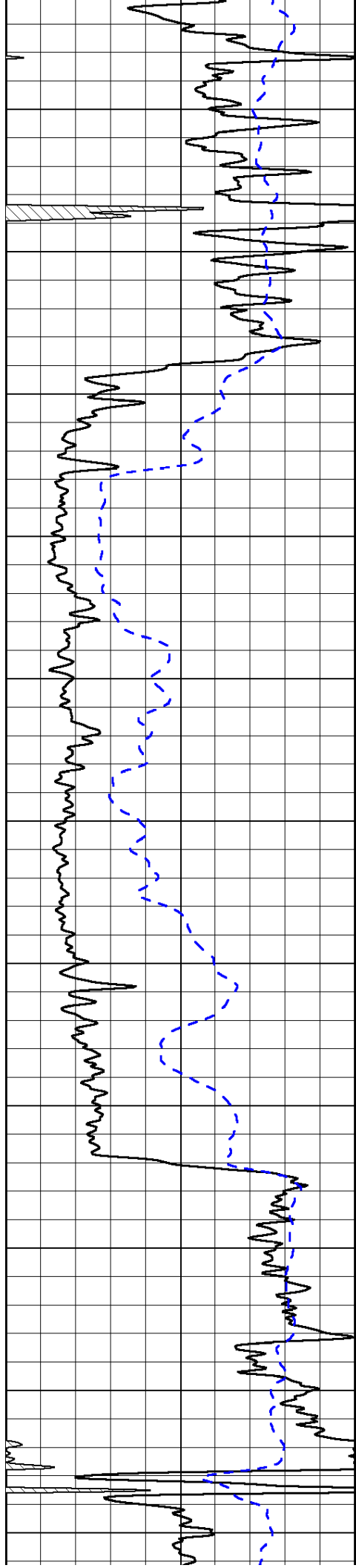


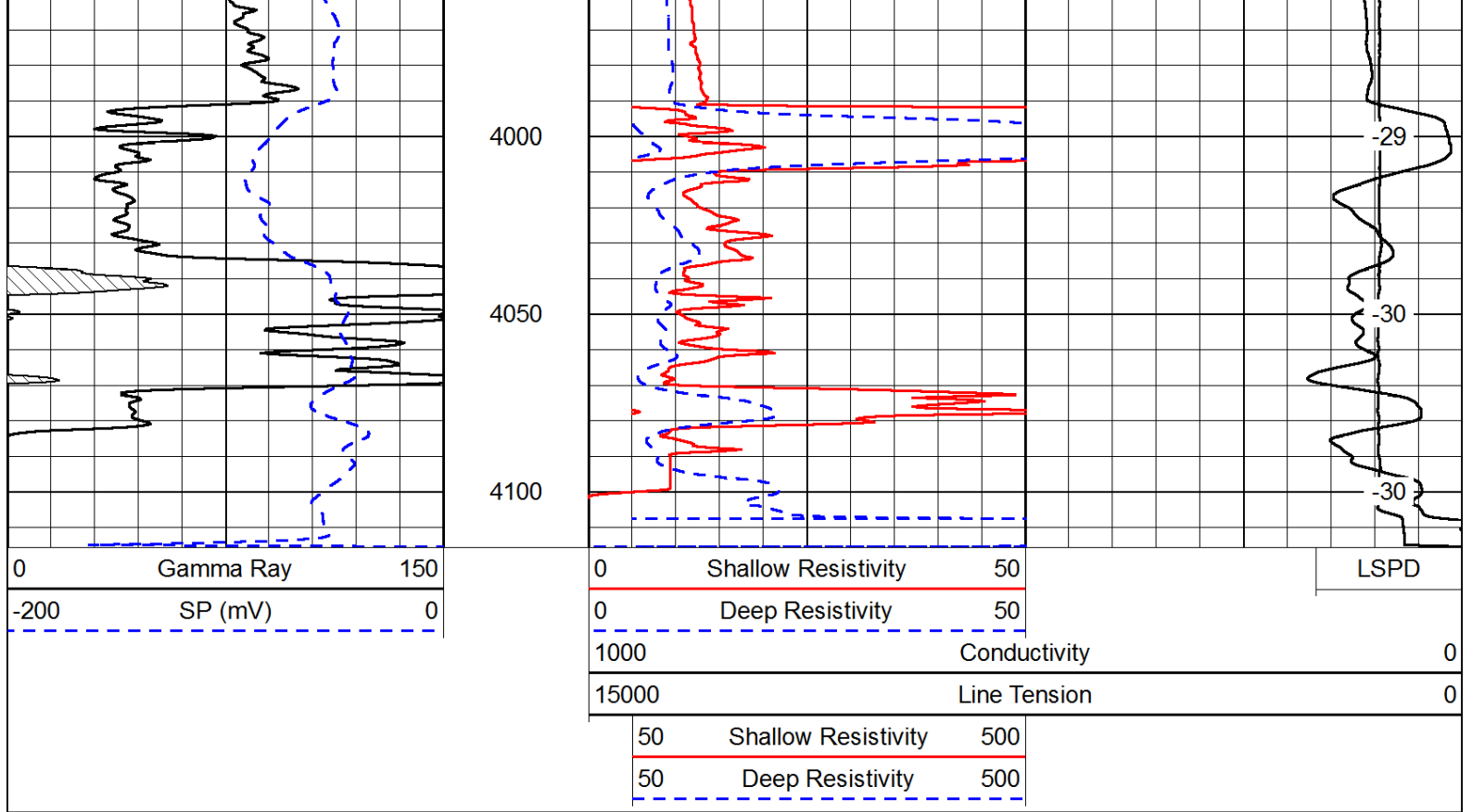




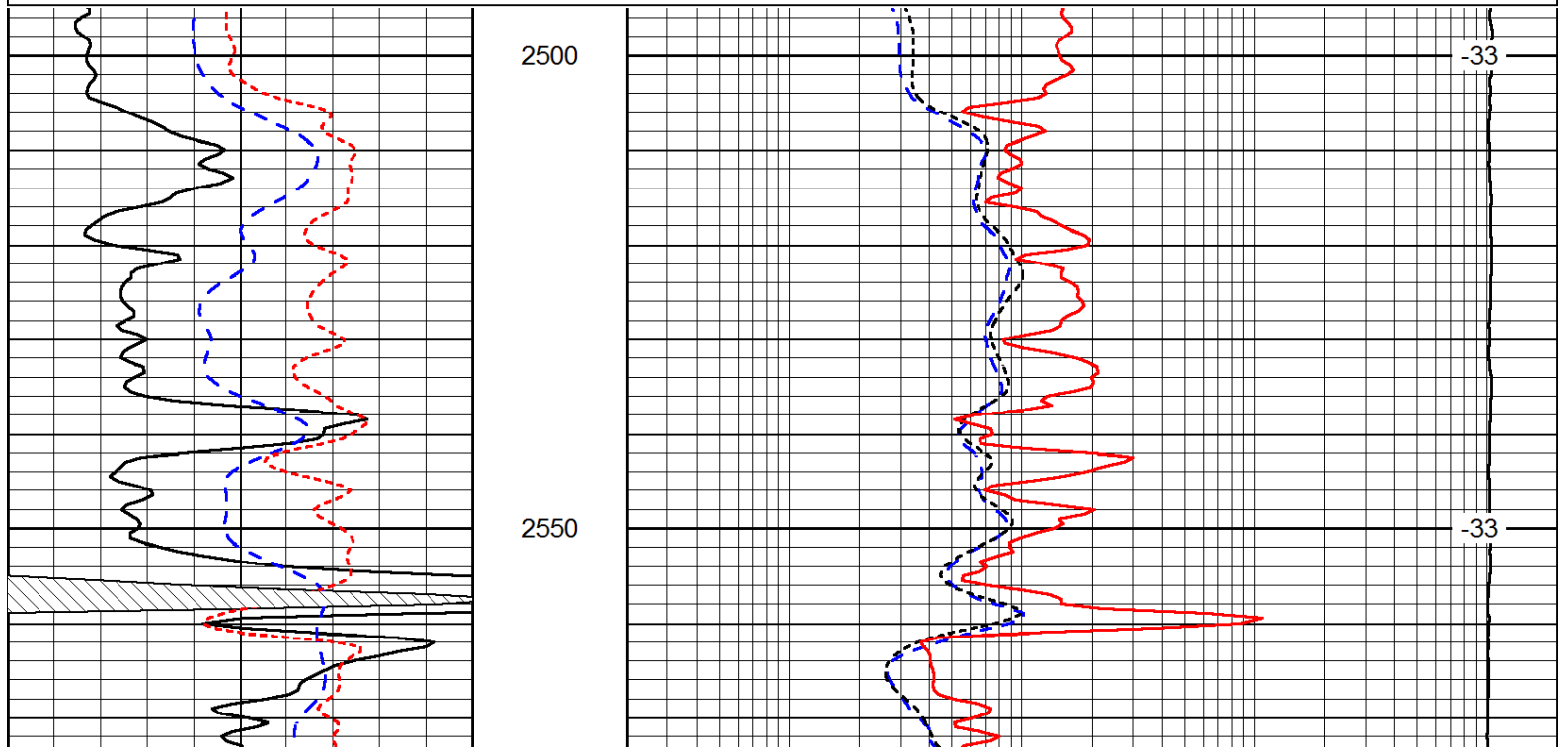
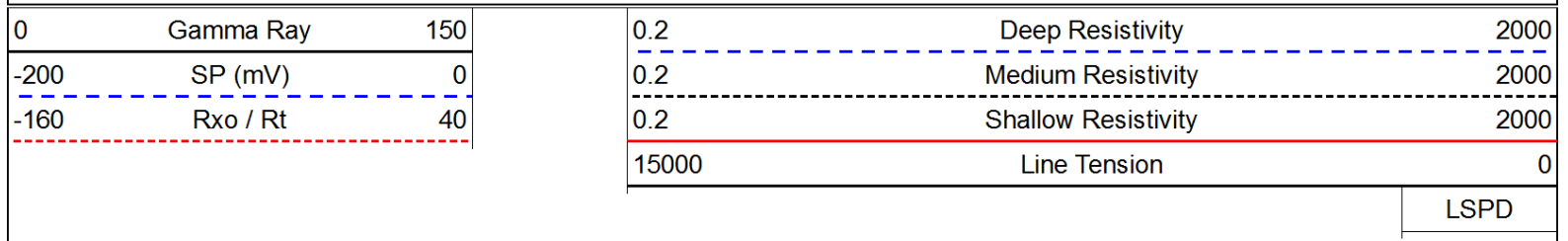


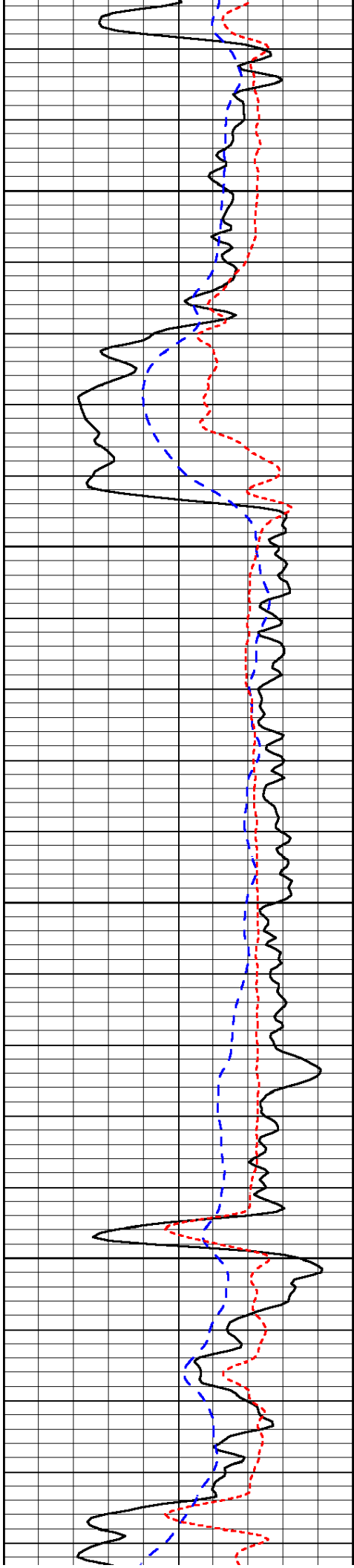






Database File: c:\warrior\data\val\_thalman no. 1-19\val\_thalman\_1-19hd.db  
 Dataset Pathname: dil\valstck  
 Presentation Format: dil  
 Dataset Creation: Mon May 21 22:17:55 2012  
 Charted by: Depth in Feet scaled 1:240



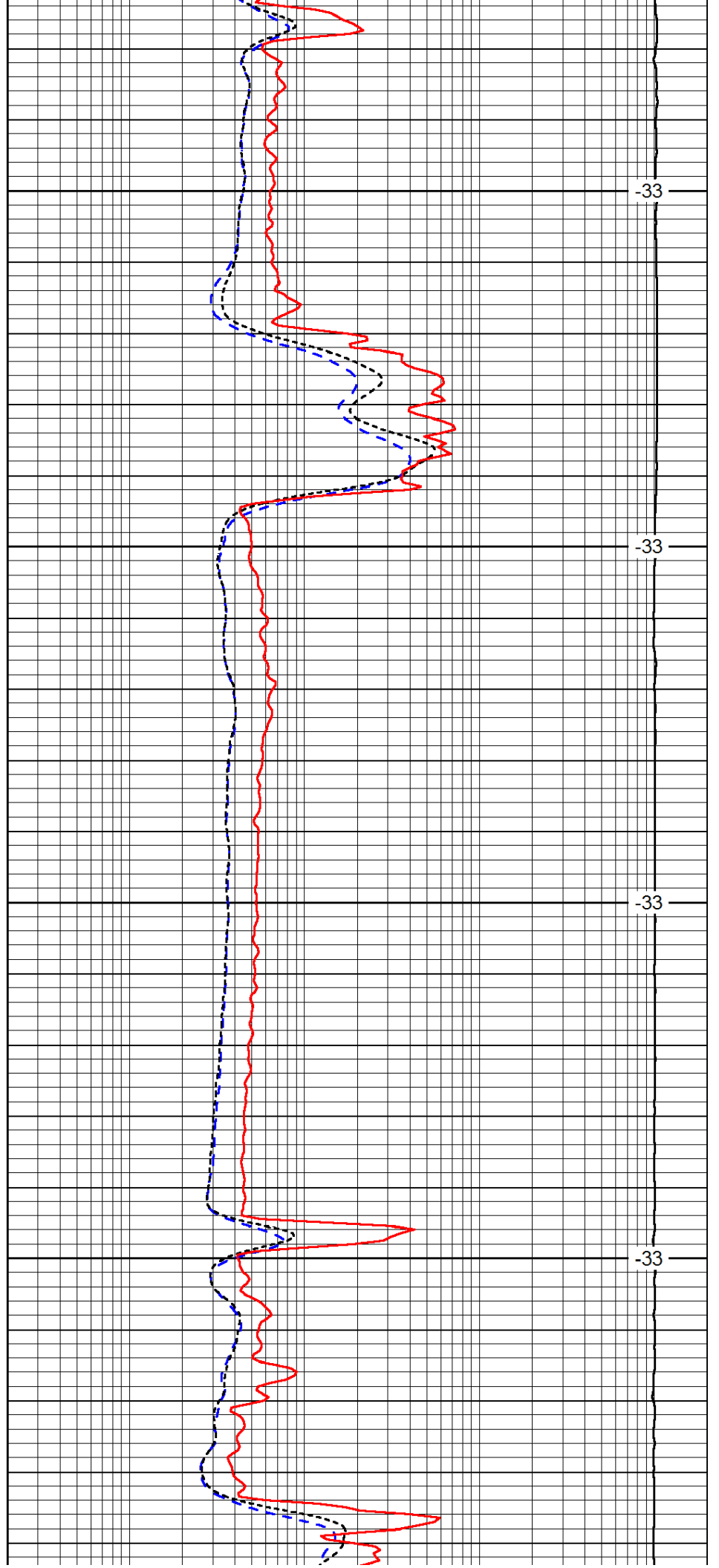


2600

2650

2700

2750

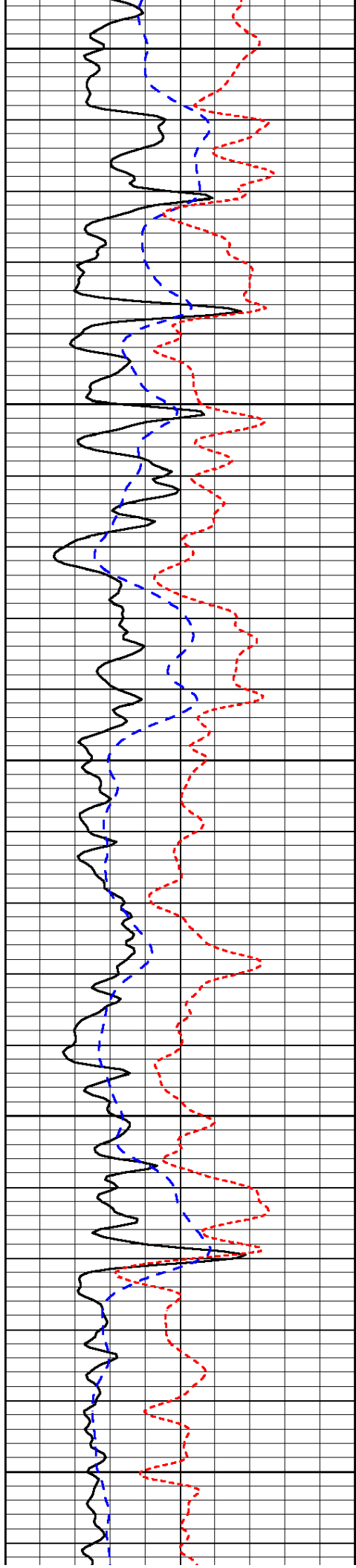


-33

-33

-33

-33



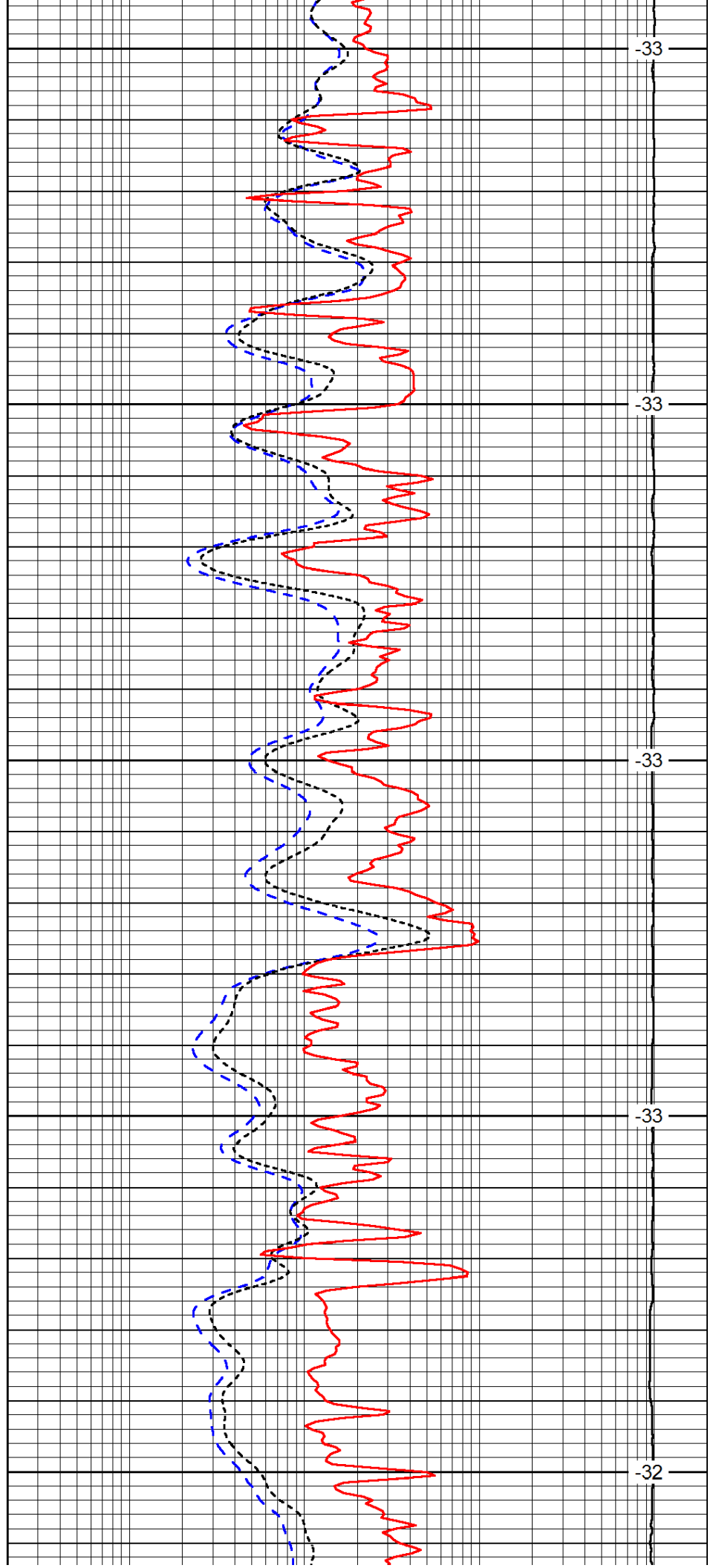
2800

2850

2900

2950

3000



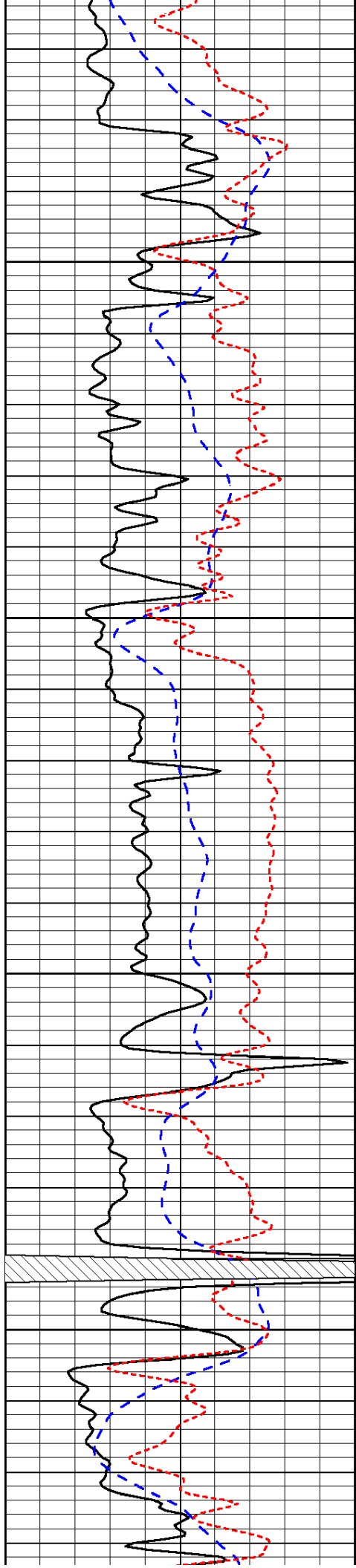
-33

-33

-33

-33

-32

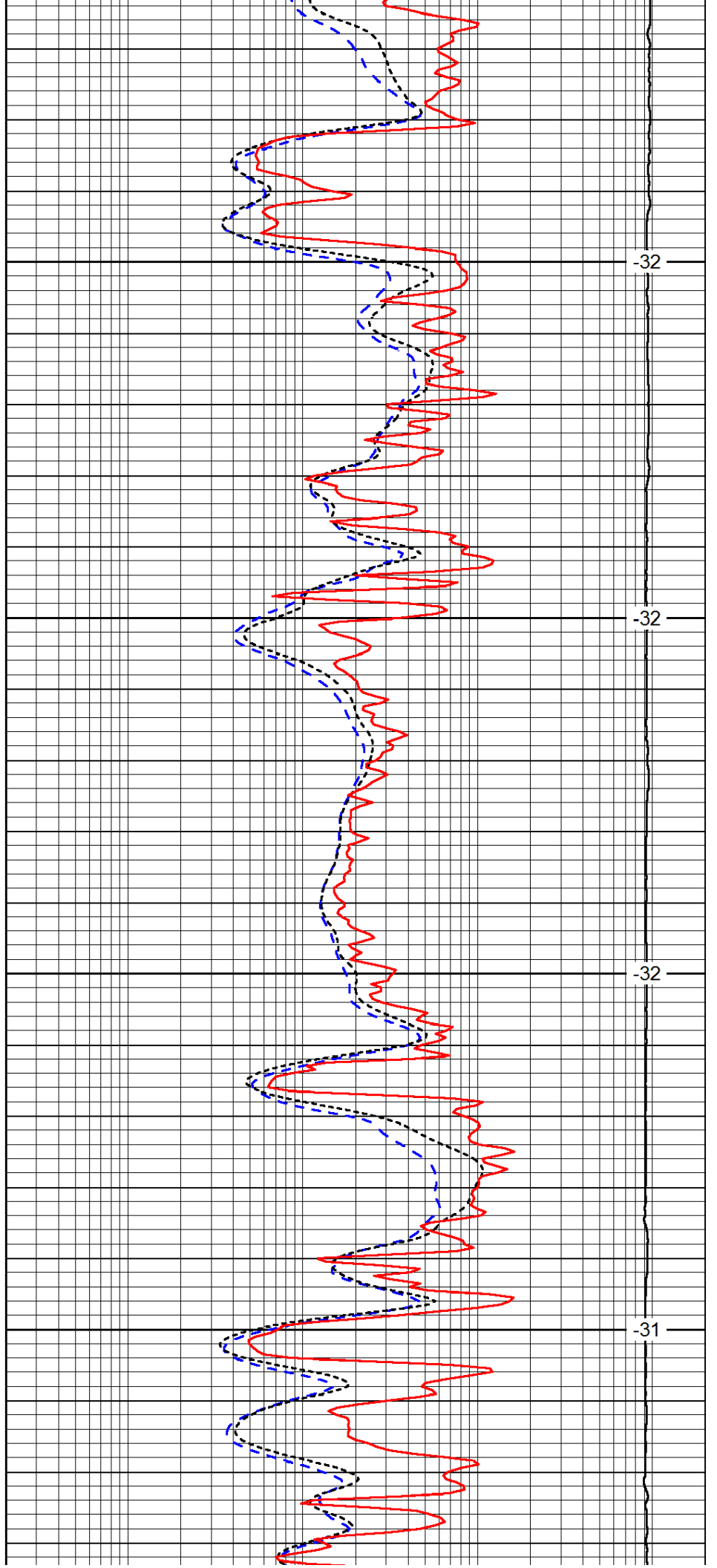


3050

3100

3150

3200

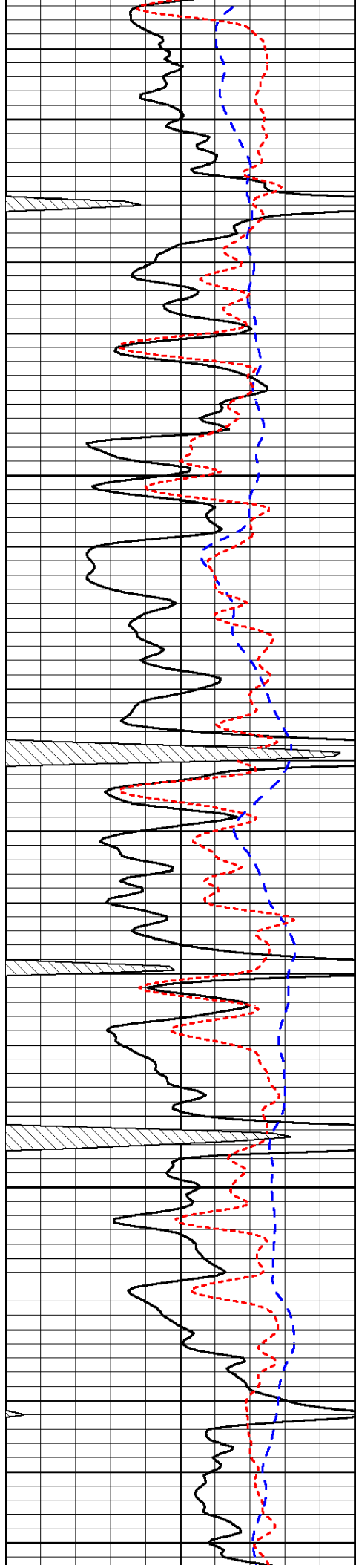


-32

-32

-32

-31



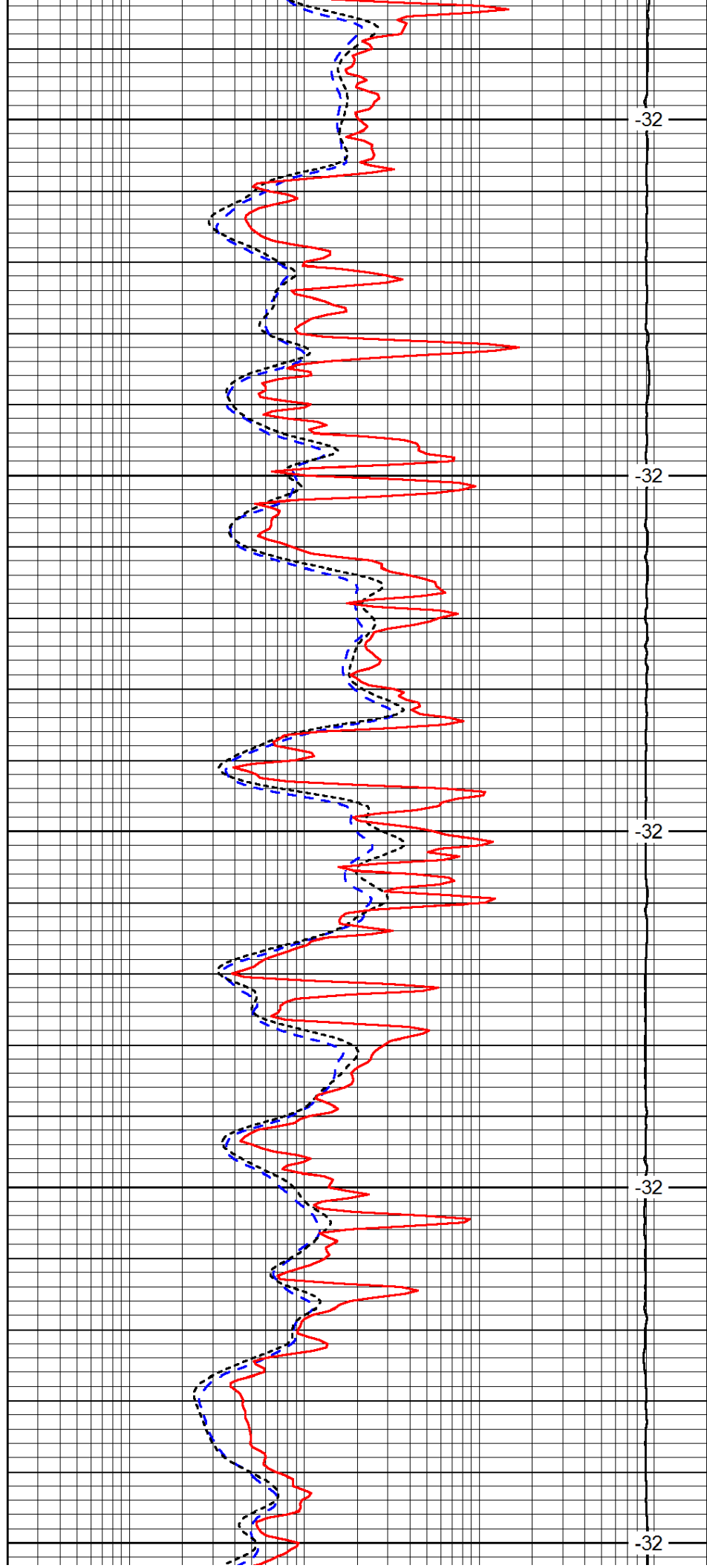
3250

3300

3350

3400

3450



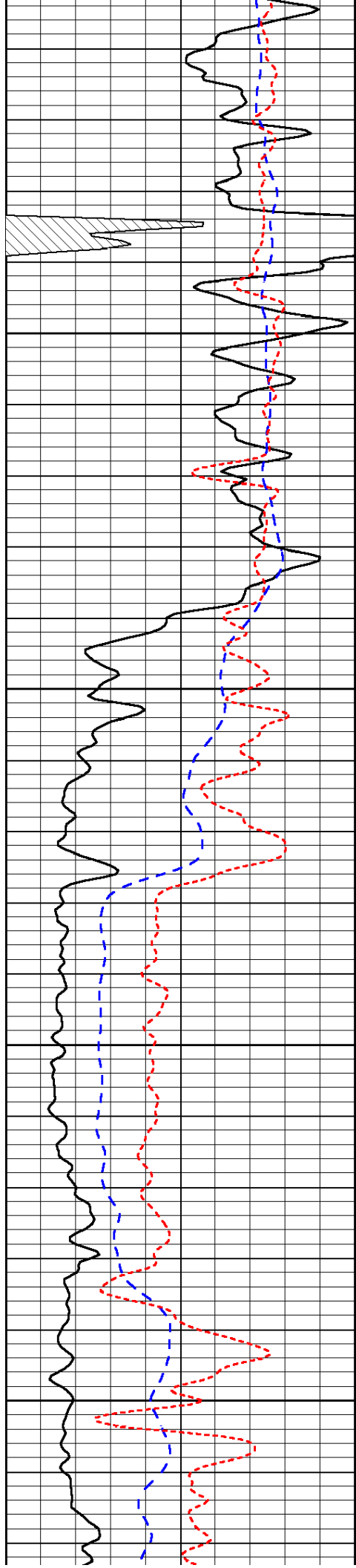
-32

-32

-32

-32

-32



3500

3550

3600

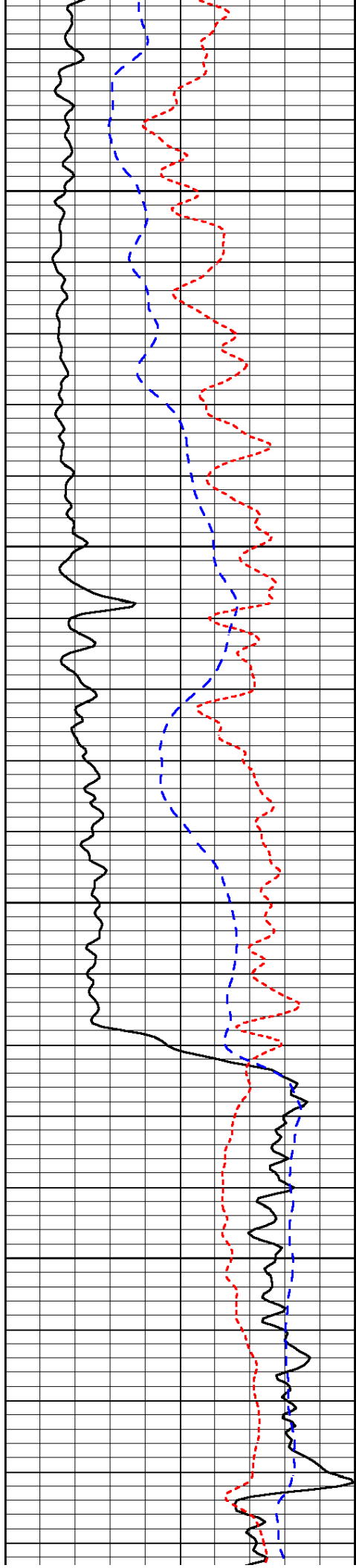
3650

-30

-30

-30

-30

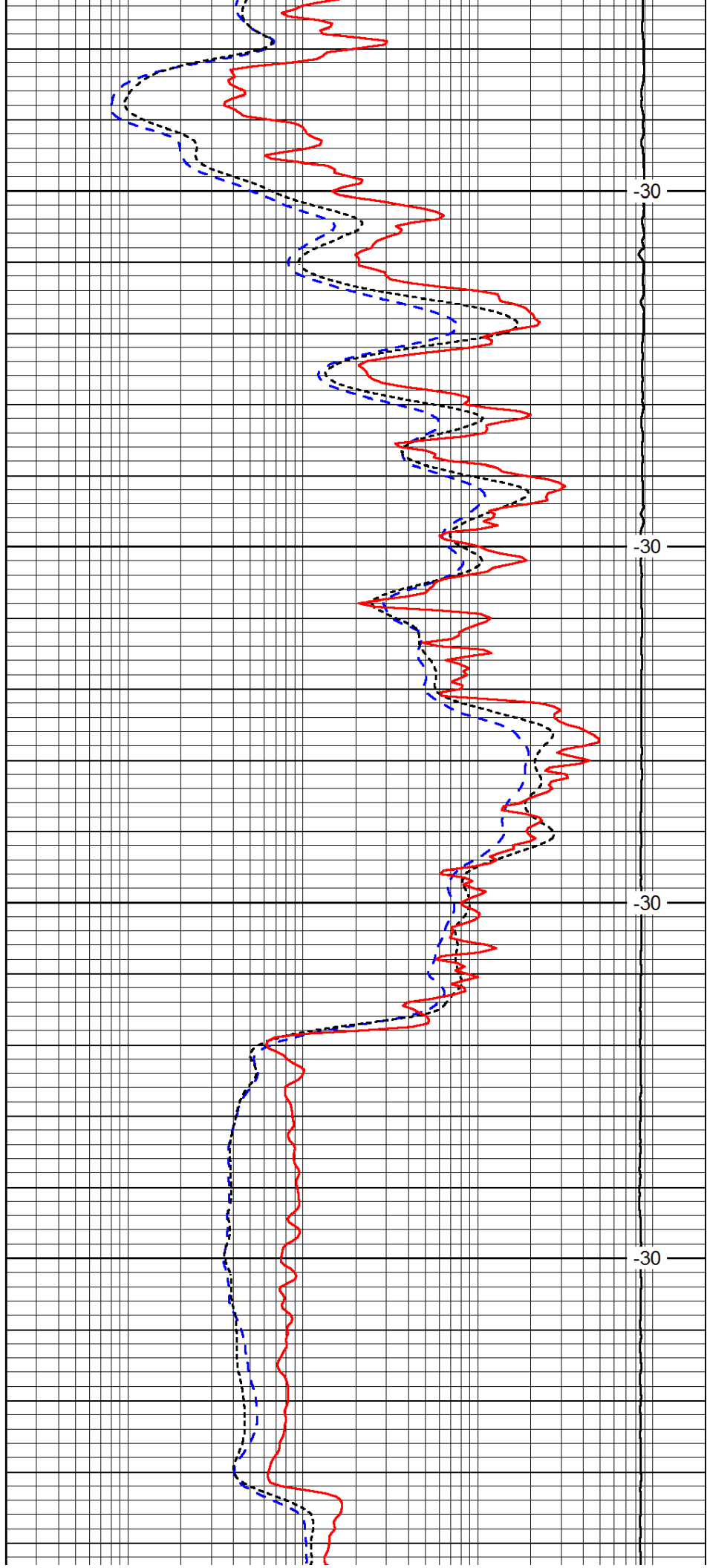


3700

3750

3800

3850

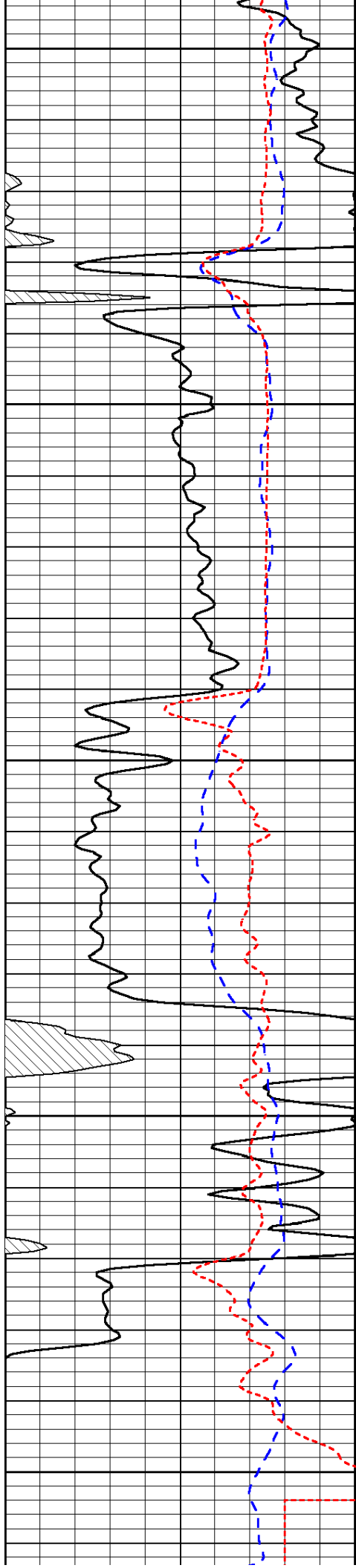


-30

-30

-30

-30



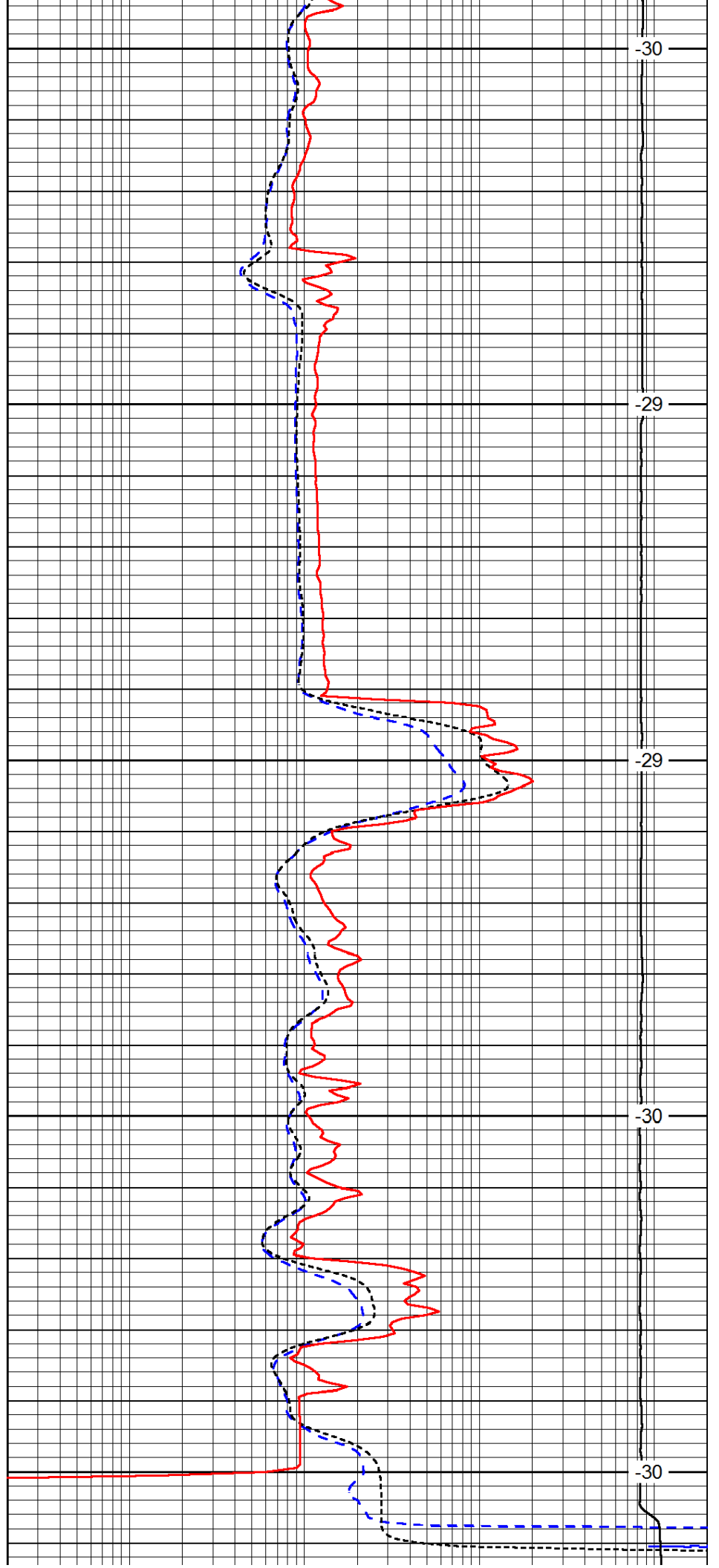
3900

3950

4000

4050

4100



-30

-29

-29

-30

-30

0	Gamma Ray	150
-200	SP (mV)	0
-160	Rxo / Rt	40

0.2	Deep Resistivity	2000
0.2	Medium Resistivity	2000
0.2	Shallow Resistivity	2000
15000	Line Tension	0
		LSPD