



DIGITAL LOG (785) 625-3858

Microresistivity Log

15-155-21,589-00-00

API No.

Company Val Energy, Inc.
 Well Thalmann No. 1-19
 Field Friendship
 County Reno State Kansas

Location S2 NW/NE NE
 445' FNL & 990' FEL

Sec: 19 Twp: 25S Rge: 4W

Other Services
 CNL/CDL
 DIL

Permanent Datum Ground Level Elevation 1516
 Log Measured From Kelly Bushing 11 Ft. Above Perm. Datum
 Drilling Measured From Kelly Bushing

Elevation
 K.B. 1527
 D.F. 1516
 G.L. 1516

Date	5/21/2012	
Run Number	Two	
Depth Driller	4110	
Depth Logger	4105	
Bottom Logged Interval	4104	
Top Log Interval	2500	
Casing Driller	8.625 @ 224	
Casing Logger	221	
Bit Size	7.875	
Type Fluid in Hole	Chemical	
Salinity, ppm CL	3000	
Density / Viscosity	9.5 53	
pH / Fluid Loss	11.5 9.6	
Source of Sample	Flowline	
Rm @ Meas. Temp	1.02 @ 72	
Rmf @ Meas. Temp	.77 @ 72	
Rmc @ Meas. Temp	1.38 @ 72	
Source of Rmf / Rmc	Charts	
Rm @ BHT	.63 @ 117	
Operating Rig Time	4 1/2 Hours	
Max Rec. Temp. F	117	
Equipment Number	108	
Location	Hays	
Recorded By	J. Long	
Witnessed By	Zeb Stewart	

<<< Fold Here >>>

All interpretations are opinions based on inferences from electrical or other measurements and we cannot and do not guarantee the accuracy or correctness of any interpretation, and we shall not, except in the case of gross or willful negligence on our part, be liable or responsible for any loss, costs, damages, or expenses incurred or sustained by anyone resulting from any interpretation made by any of our officers, agents or employees. These interpretations are also subject to our general terms and conditions set out in our current Price Schedule.

Comments

Thank you for using Log-Tech, Inc.
 (785) 625-3858

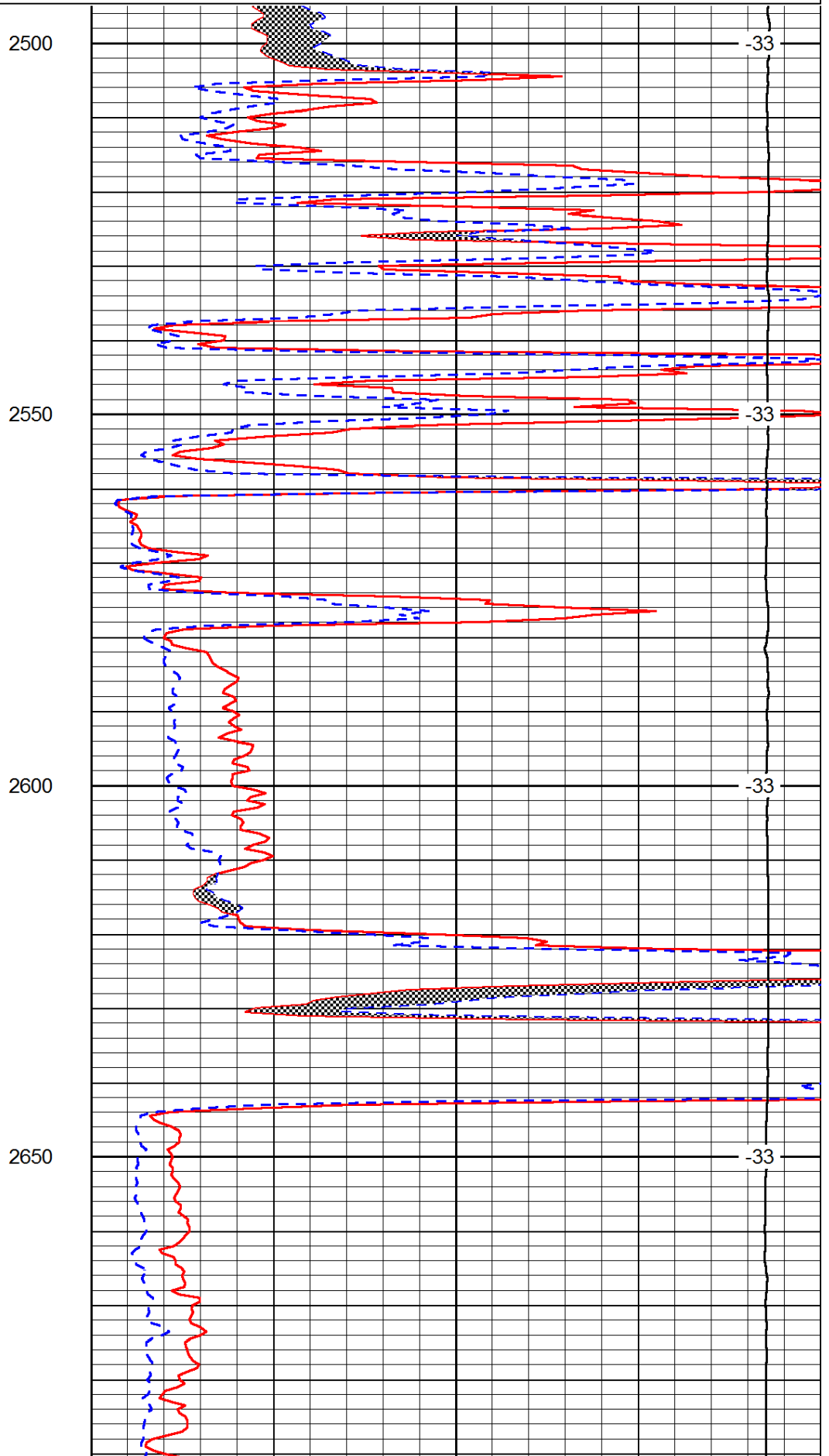
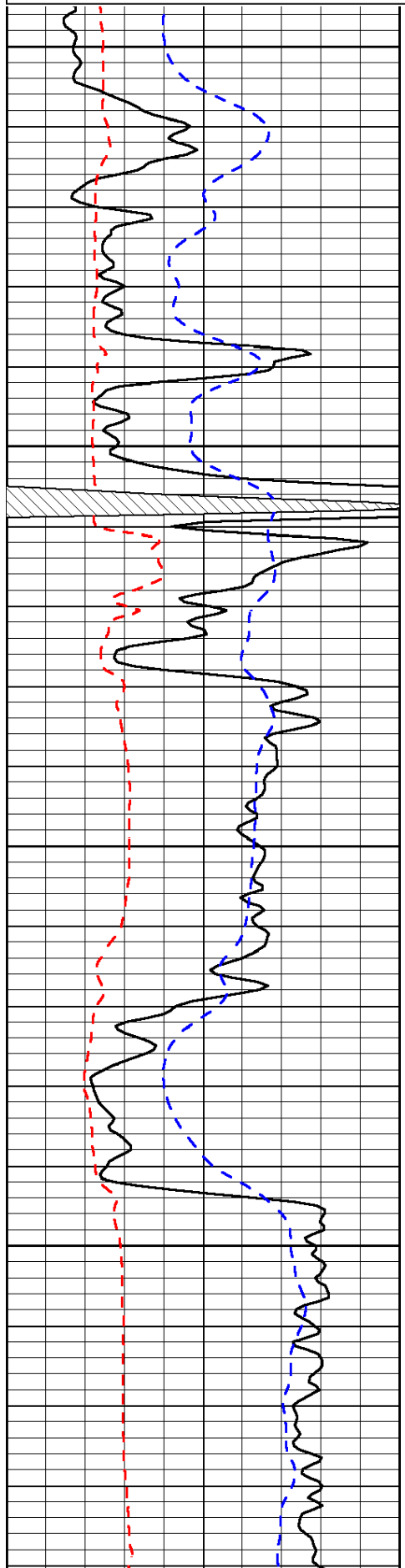
Yoder (Highway 96 & Yoder Road), 2 1/2 South to Arlington Road, 4 East to Willison Road,
 2 South to Castleton Road, 1/4 West, North Into

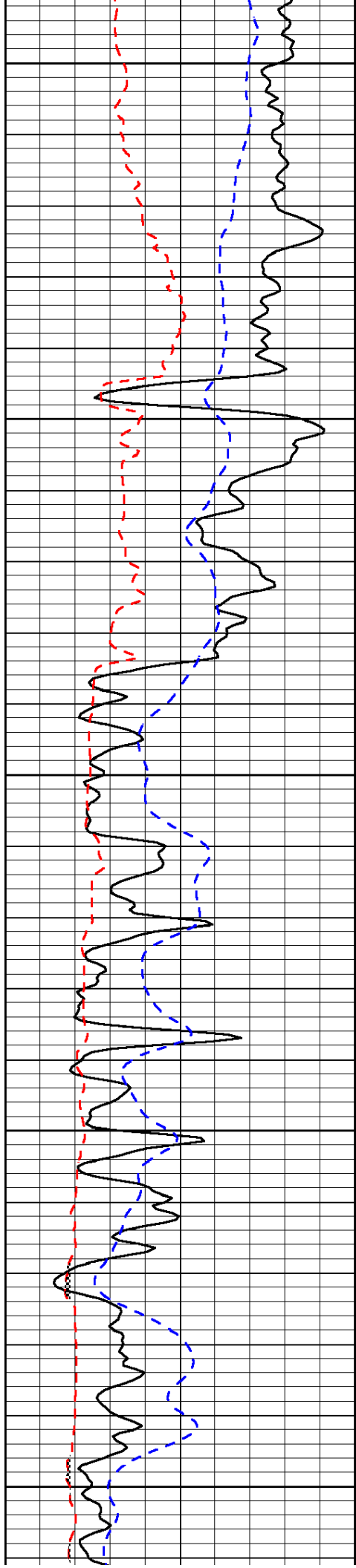
Database File: c:\warrior\data\val_thalmann no. 1-19\val_thalmann_1-19hd.db
 Dataset Pathname: dil\valstck
 Presentation Format: micro
 Dataset Creation: Mon May 21 22:17:55 2012
 Charted by: Depth in Feet scaled 1:240

0	Gamma Ray	150
6	Micro Log Caliper (GAPI)	16
-200	SP (mV)	0

0	Micro Inverse 1 X 1	40
0	Micro Normal 2"	40
15000	Line Weight	0

LSPD





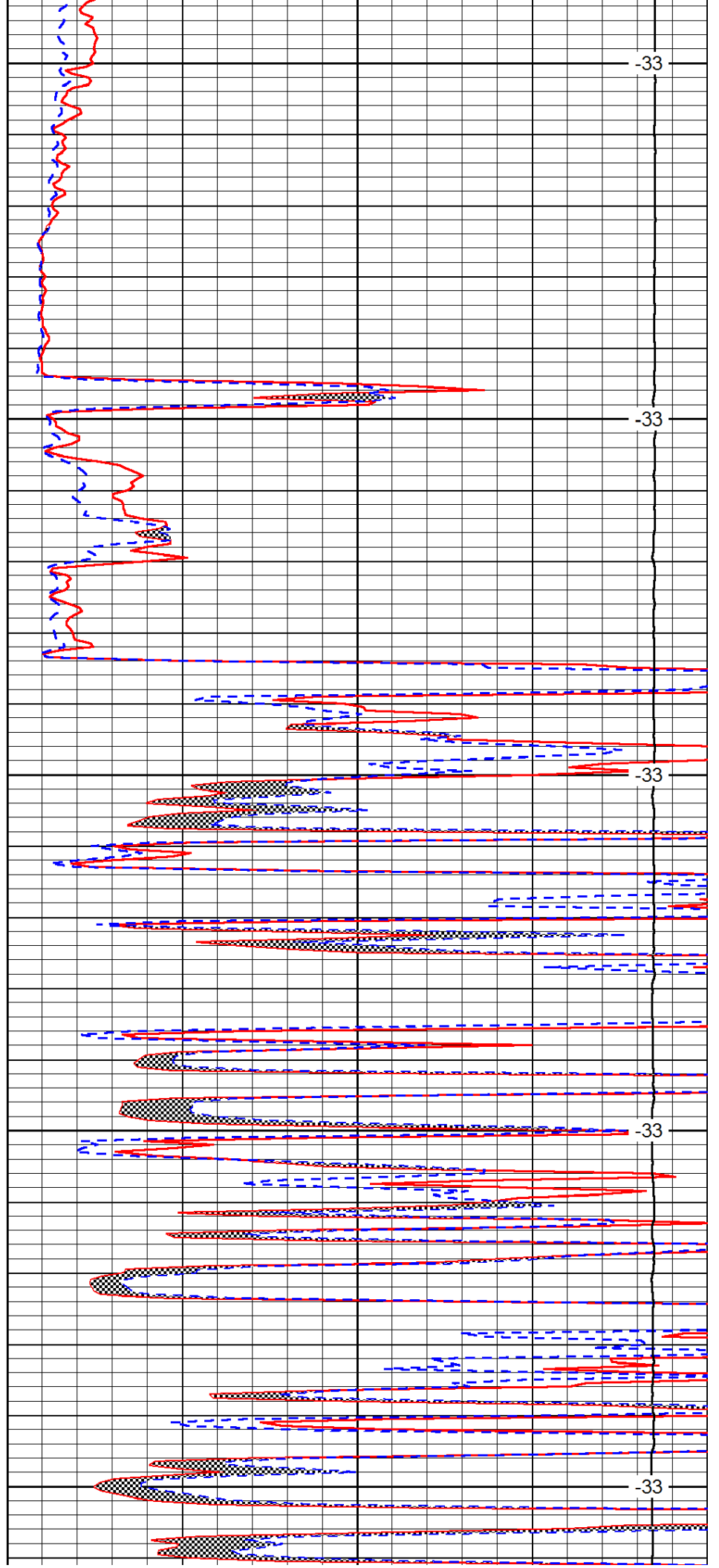
2700

2750

2800

2850

2900



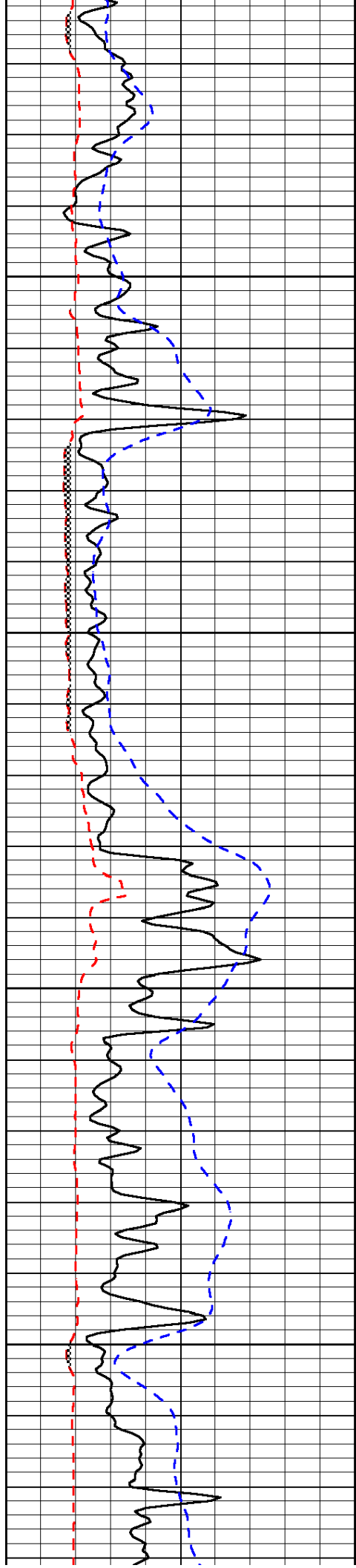
-33

-33

-33

-33

-33

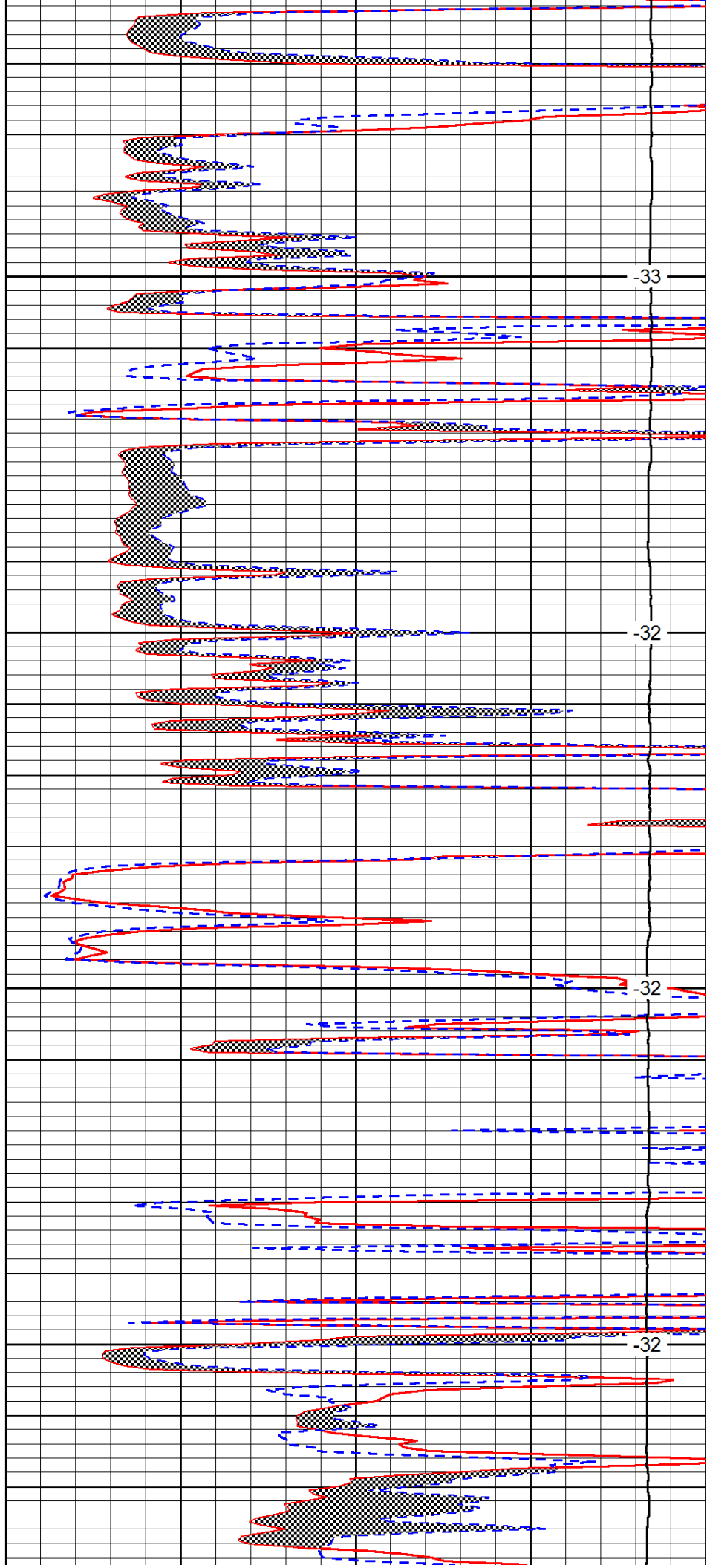


2950

3000

3050

3100

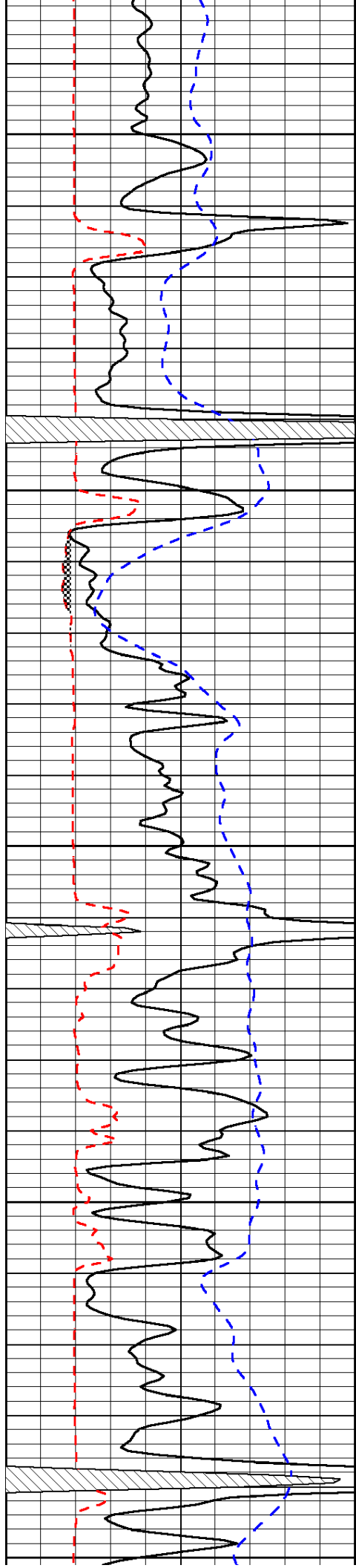


-33

-32

-32

-32



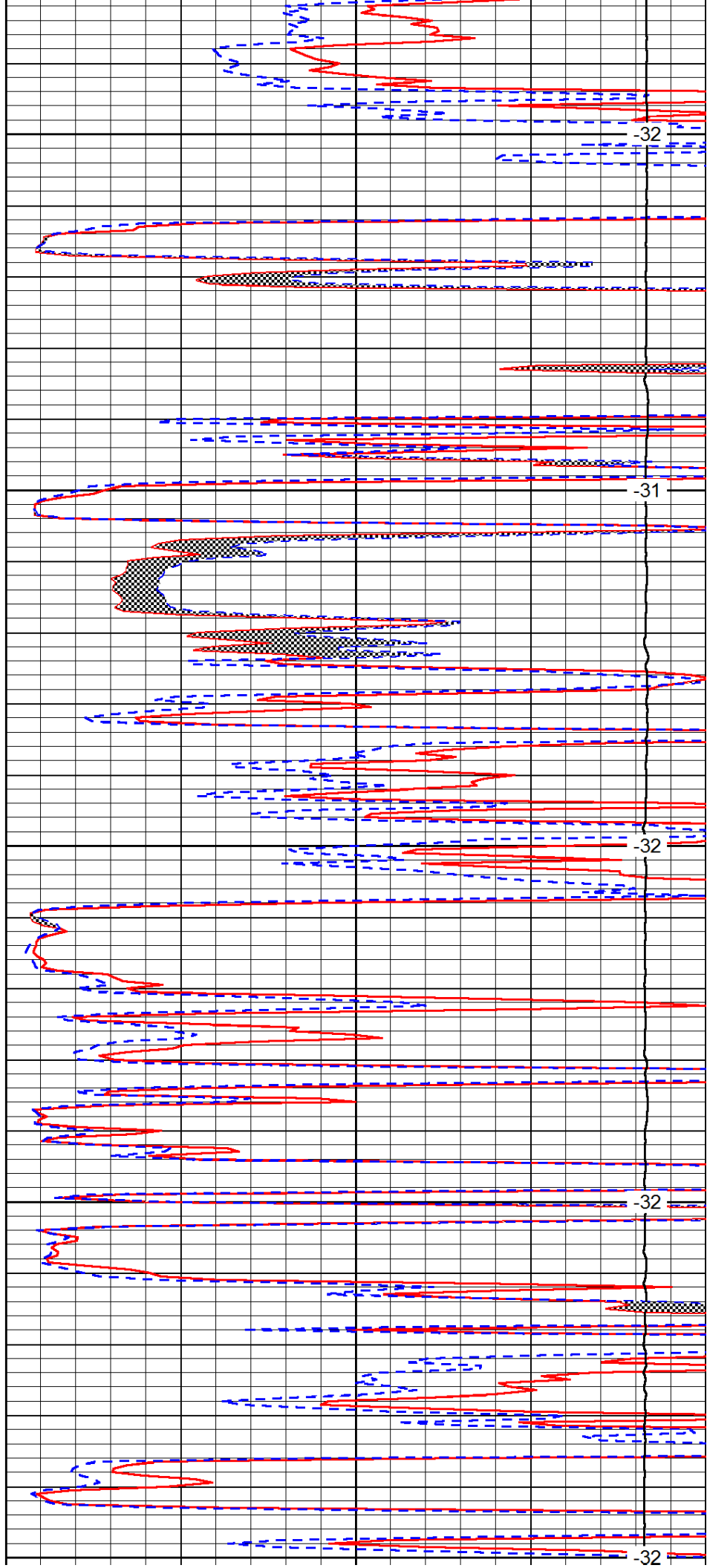
3150

3200

3250

3300

3350



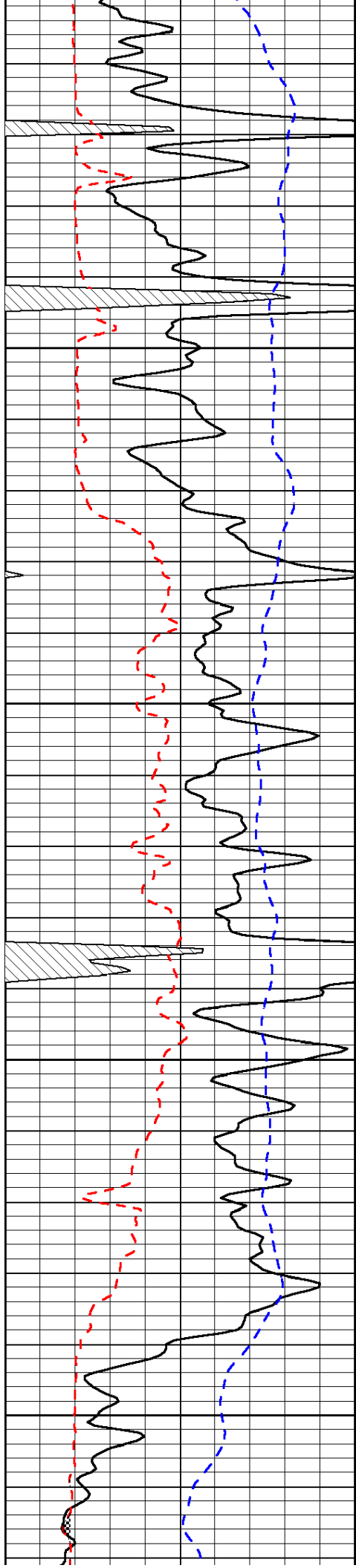
-32

-31

-32

-32

-32

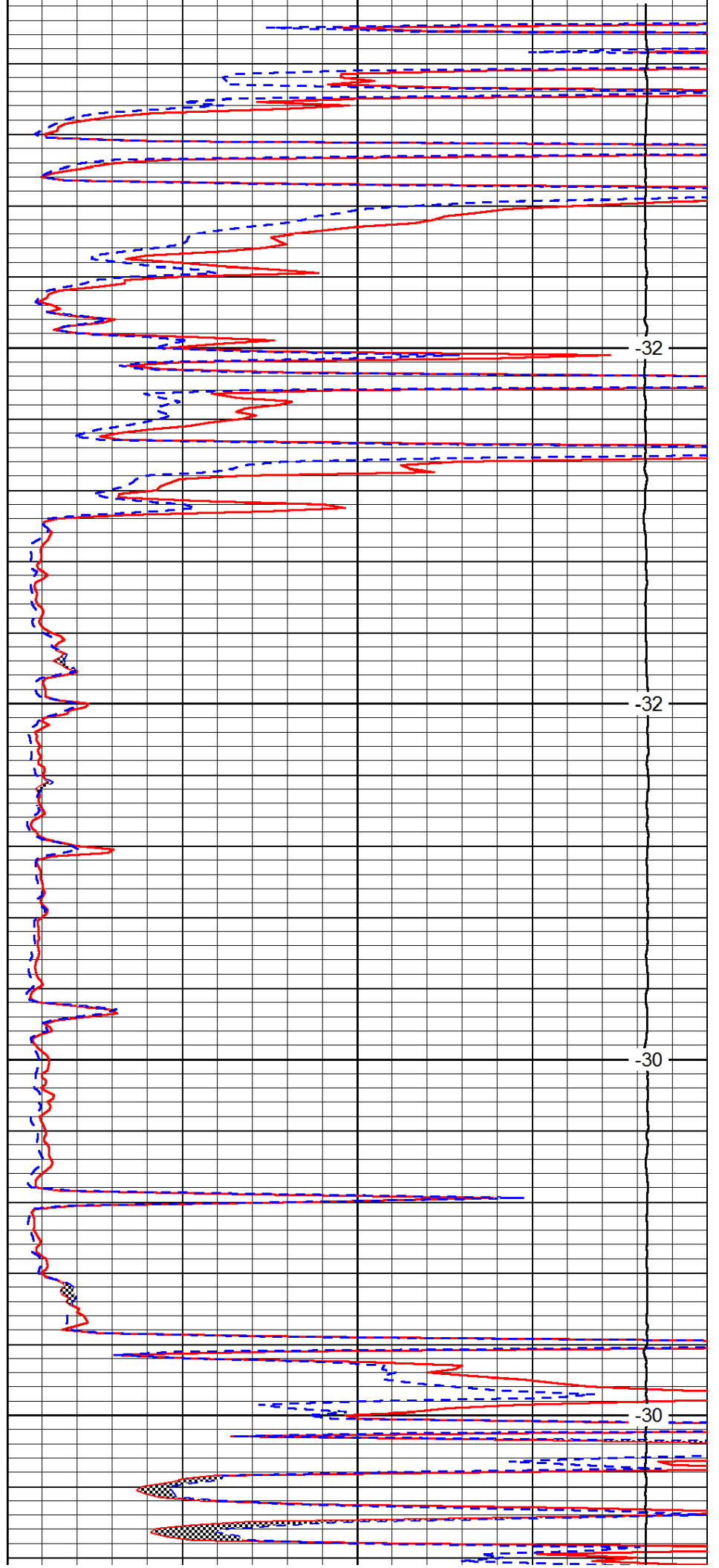


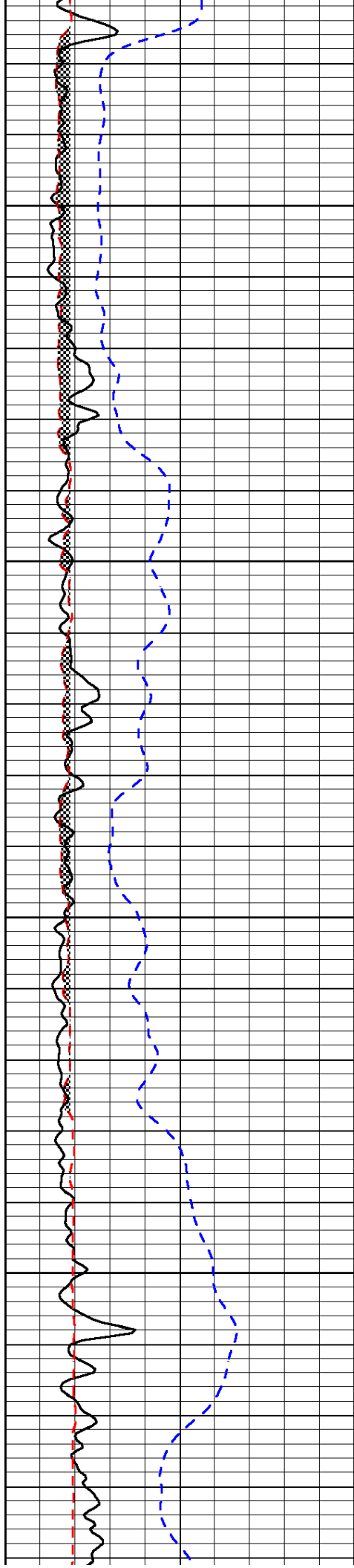
3400

3450

3500

3550



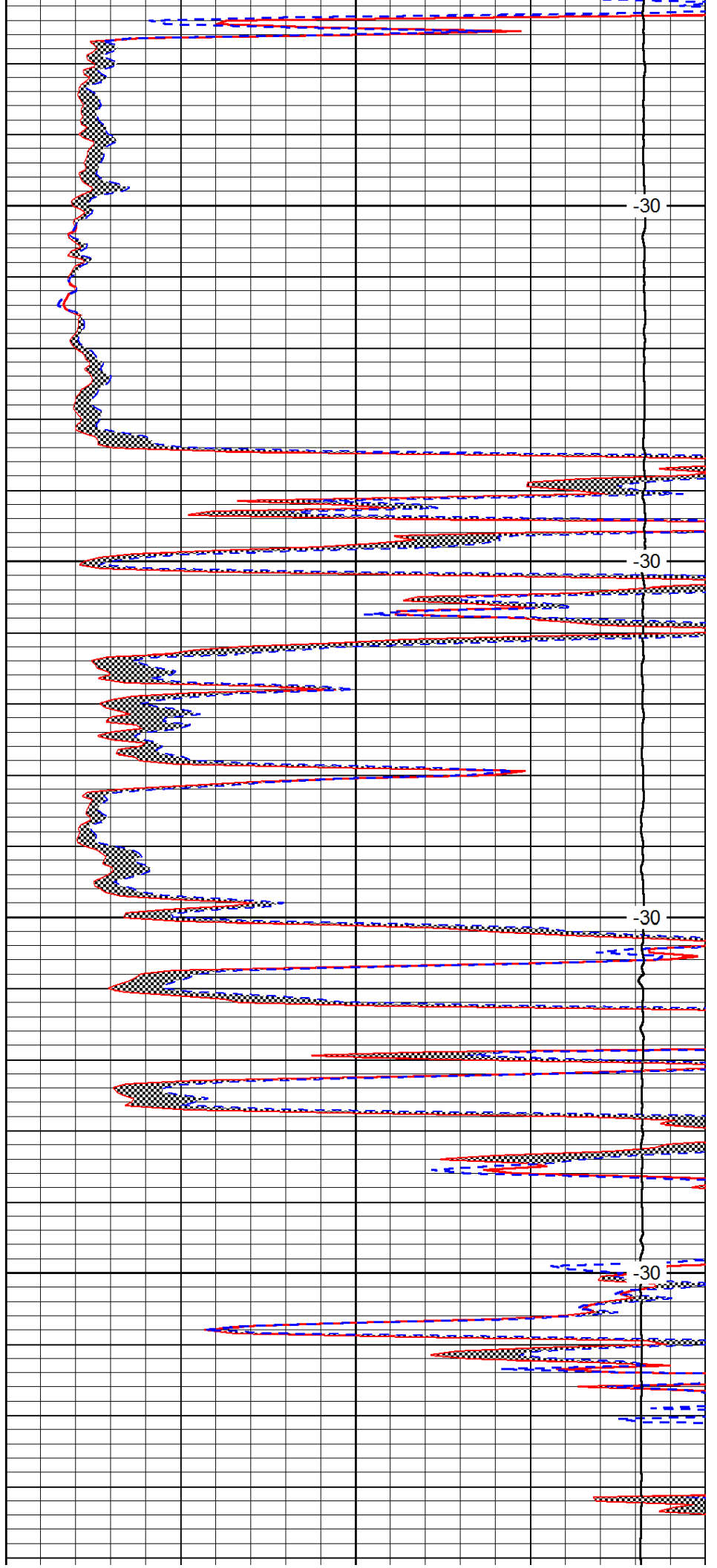


3600

3650

3700

3750

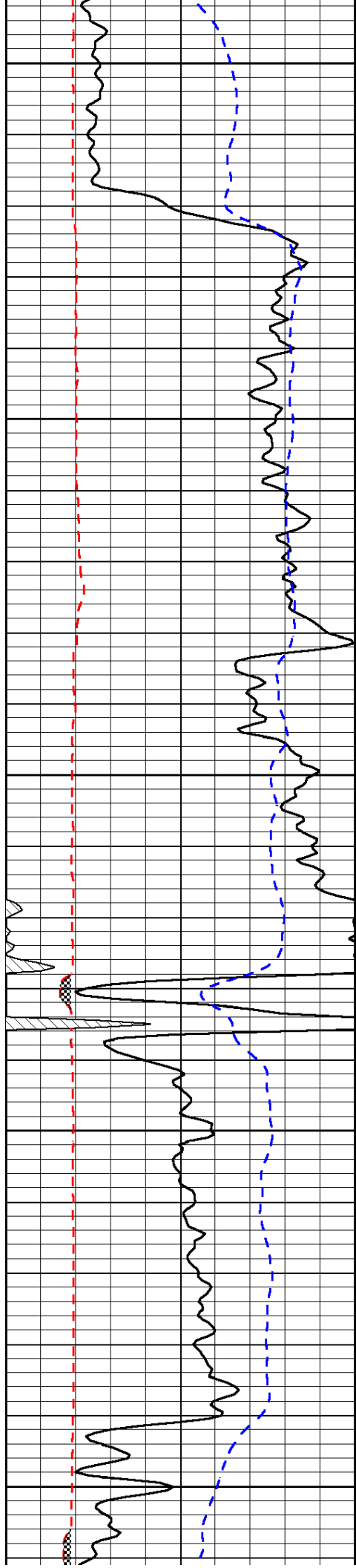


-30

-30

-30

-30



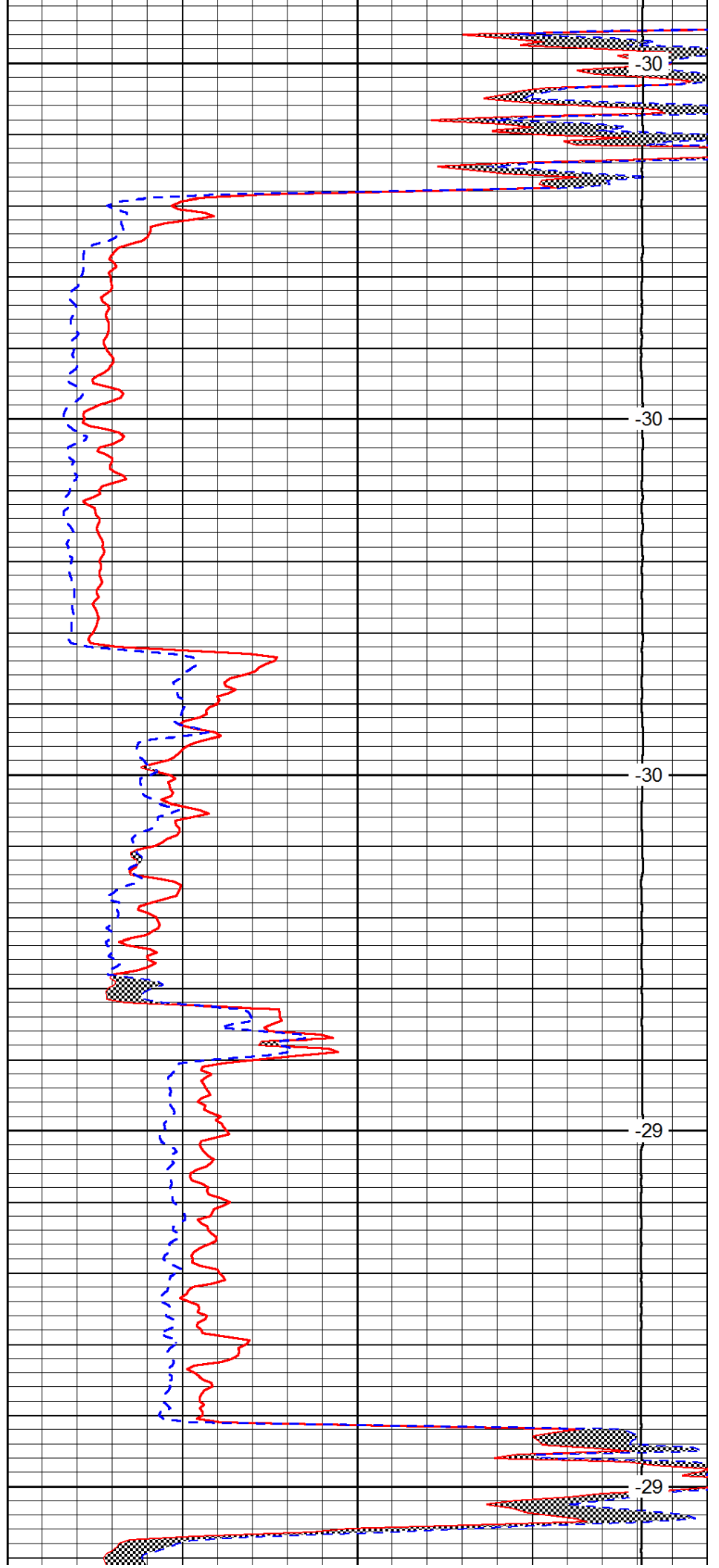
3800

3850

3900

3950

4000



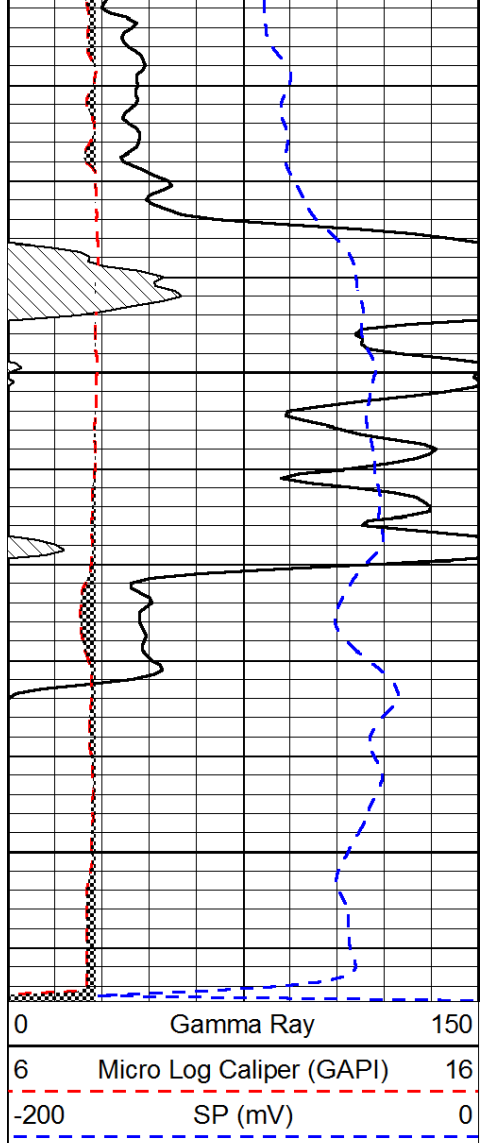
-30

-30

-30

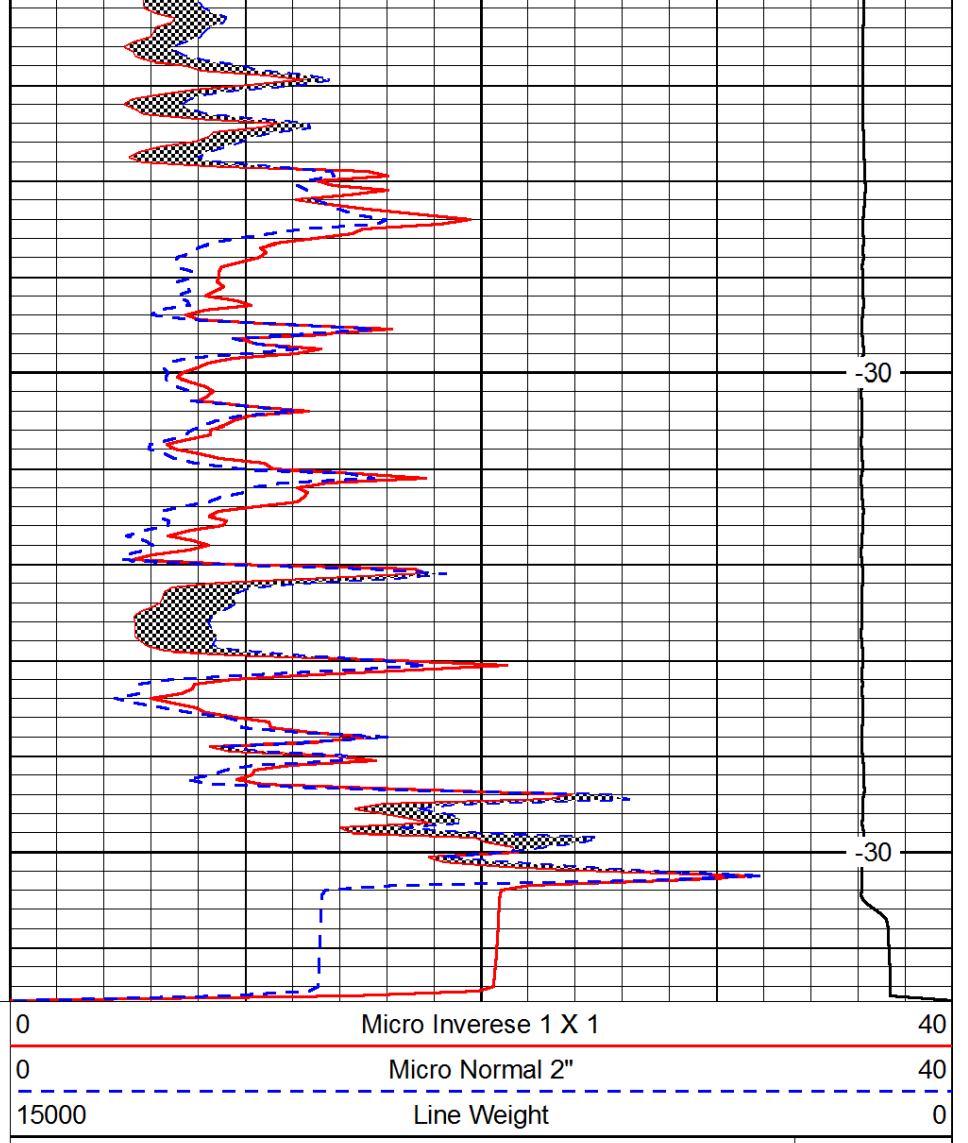
-29

-29



4050

4100



-30

-30

LSPD