



SUPERIOR
Hays,
Kansas

**DUAL INDUCTION
LOG**

Company VINCENT OIL CORPORATION
Well CUER #1-28
Field ELC
County FORD
State KANSAS

Company VINCENT OIL CORPORATION
Well CUER #1-28
Field ELC
County FORD State KANSAS

Location: API # : 15-057-20788-0000
330' FNL & 820' FWL
SEC 28 TWP 29S RGE 22W
Permanent Datum GROUND LEVEL Elevation 2453
Log Measured From KELLY BUSHING 13' A.G.L.
Drilling Measured From KELLY BUSHING
Other Services
CDL/CNL/PE
MEL/SONIC
Elevation
K.B. 2466
D.F. 2464
G.L. 2453

Date	3/18/12
Run Number	ONE
Depth Driller	5497
Depth Logger	5494
Bottom Logged Interval	5492
Top Log Interval	00
Casing Driller	8 5/8"@606'
Casing Logger	602
Bit Size	7 7/8"
Type Fluid in Hole	CHEMICAL MUD
Density / Viscosity	9.3/57
pH / Fluid Loss	10.0/9.2
Source of Sample	FLOWLINE
Rm @ Meas. Temp	.480@72F
Rmt @ Meas. Temp	.360@72F
Rmc @ Meas. Temp	.576@72F
Source of Rmf / Rmc	MEASUREMENT
Rm @ BHT	266@130F
Time Circulation Stopped	4 HOURS
Time Logger on Bottom	9:30 A.M.
Maximum Recorded Temperature	130F
Equipment Number	4010
Location	HAYS, KANSAS
Recorded By	JEFF LUEBBERS
Witnessed By	JIM HALL

<<< Fold Here >>>

All interpretations are opinions based on inferences from electrical or other measurements and we cannot and do not guarantee the accuracy or correctness of any interpretation, and we shall not, except in the case of gross or willful negligence on our part, be liable or responsible for any loss, costs, damages, or expenses incurred or sustained by anyone resulting from any interpretation made by any of our officers, agents or employees. These interpretations are also subject to our general terms and conditions set out in our current Price Schedule.

Comments

THANK YOU FOR USING SUPERIOR WELL SERVICE HAYS, KANSAS (785) 628-6395
DIRECTIONS
KINGSDOWN, KS. (HWY 54 & RD. 125) 2S. ON "RD. 125", 2E., S. INTO



SUPERIOR
Hays,
Kansas

MAIN SECTION

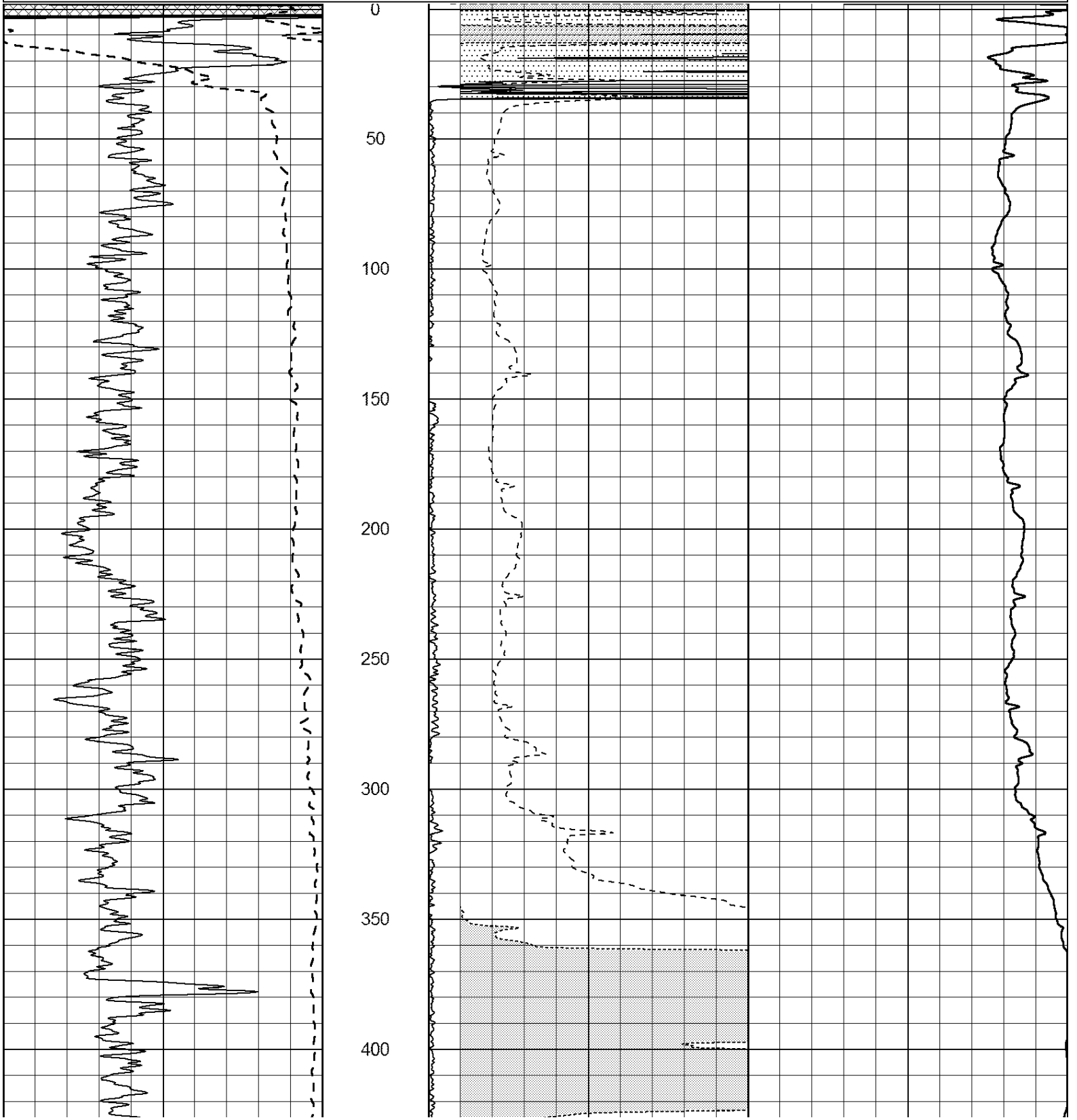
Database File: 408608pe.db
 Dataset Pathname: pass3.7
 Presentation Format: dil2
 Dataset Creation: Sun Mar 18 11:50:27 2012
 Charted by: Depth in Feet scaled 1:600

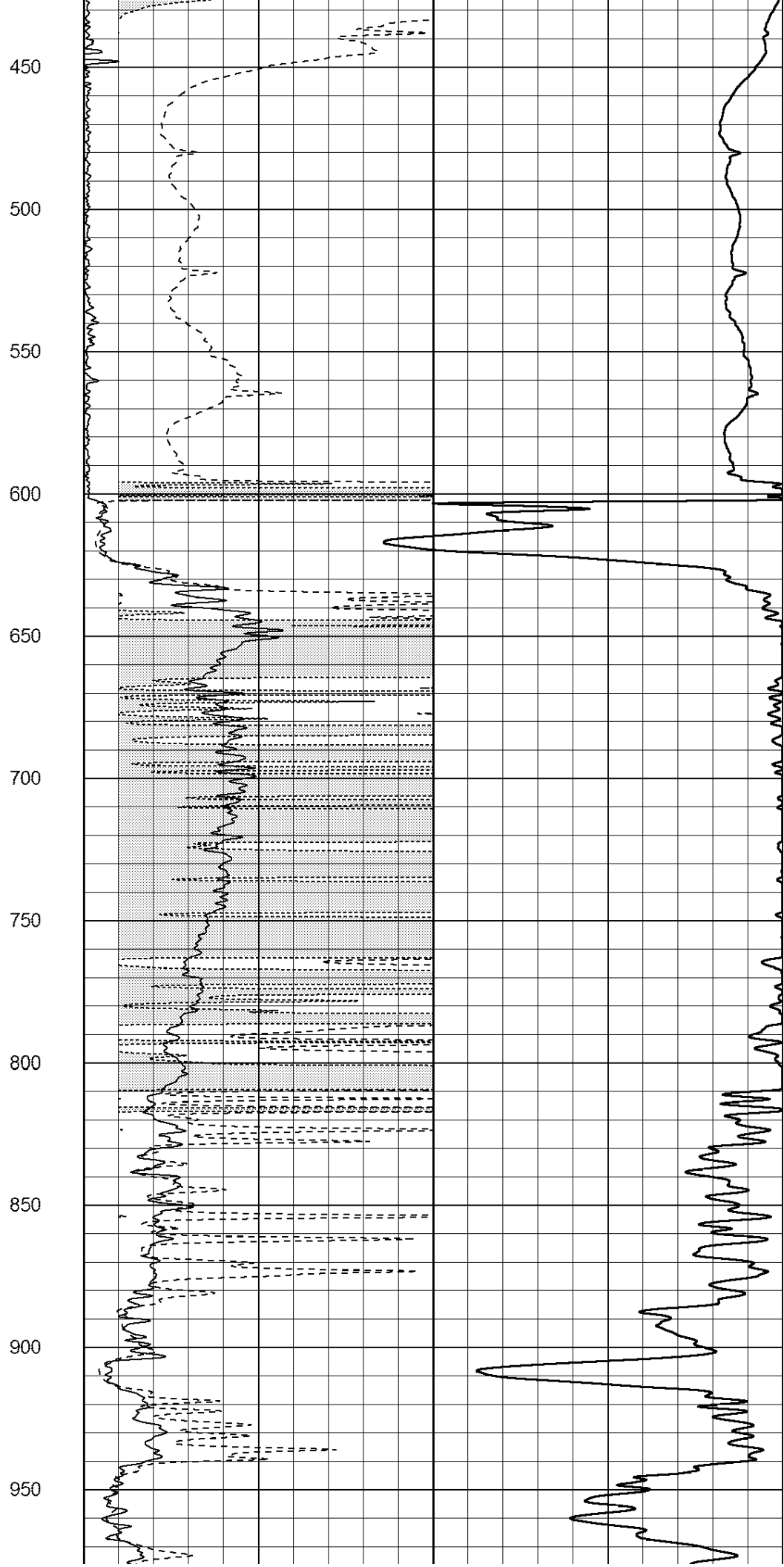
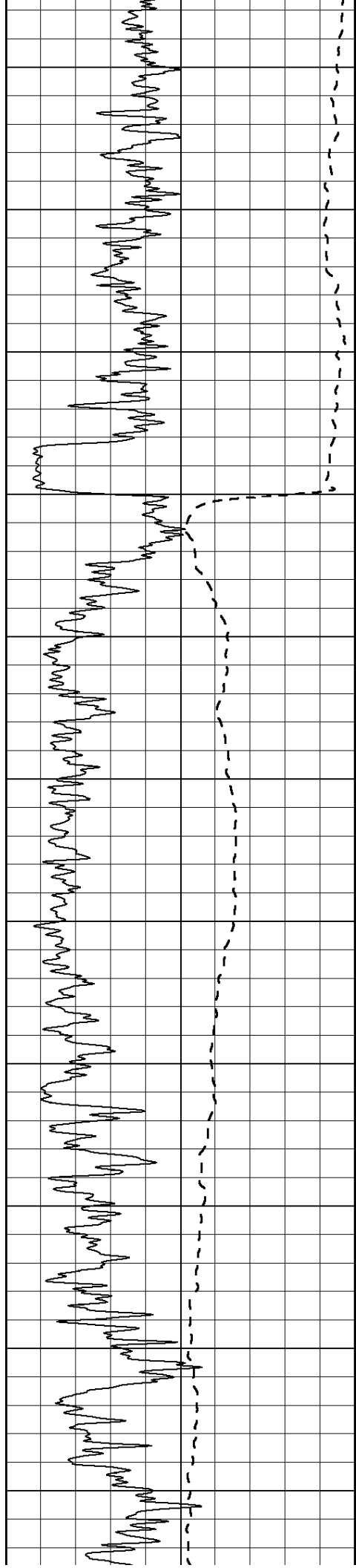
0	Gamma Ray (GAPI)	150
-100	SP (mV)	100

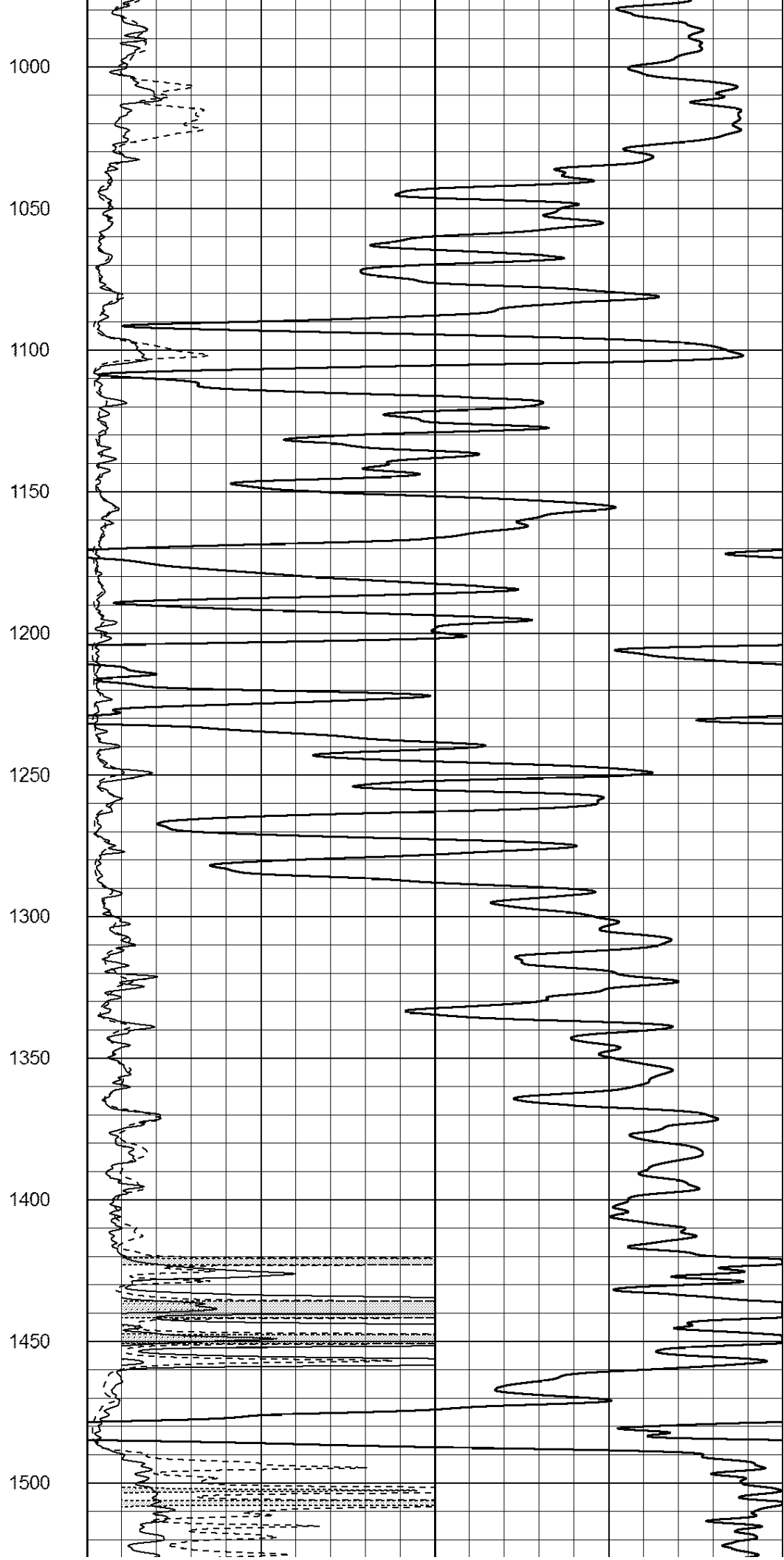
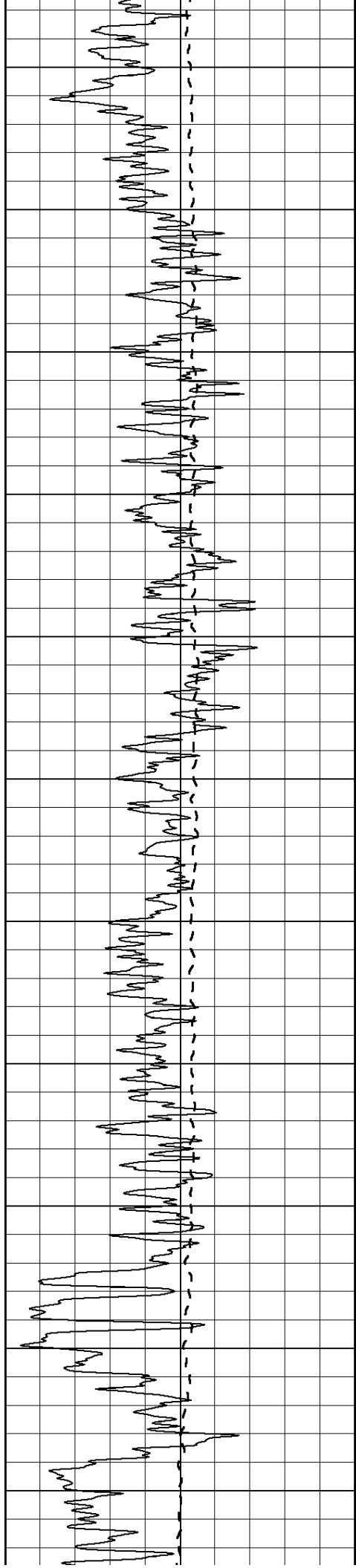
0	RLL3 (Ohm-m)	50
0	RILD (Ohm-m)	50

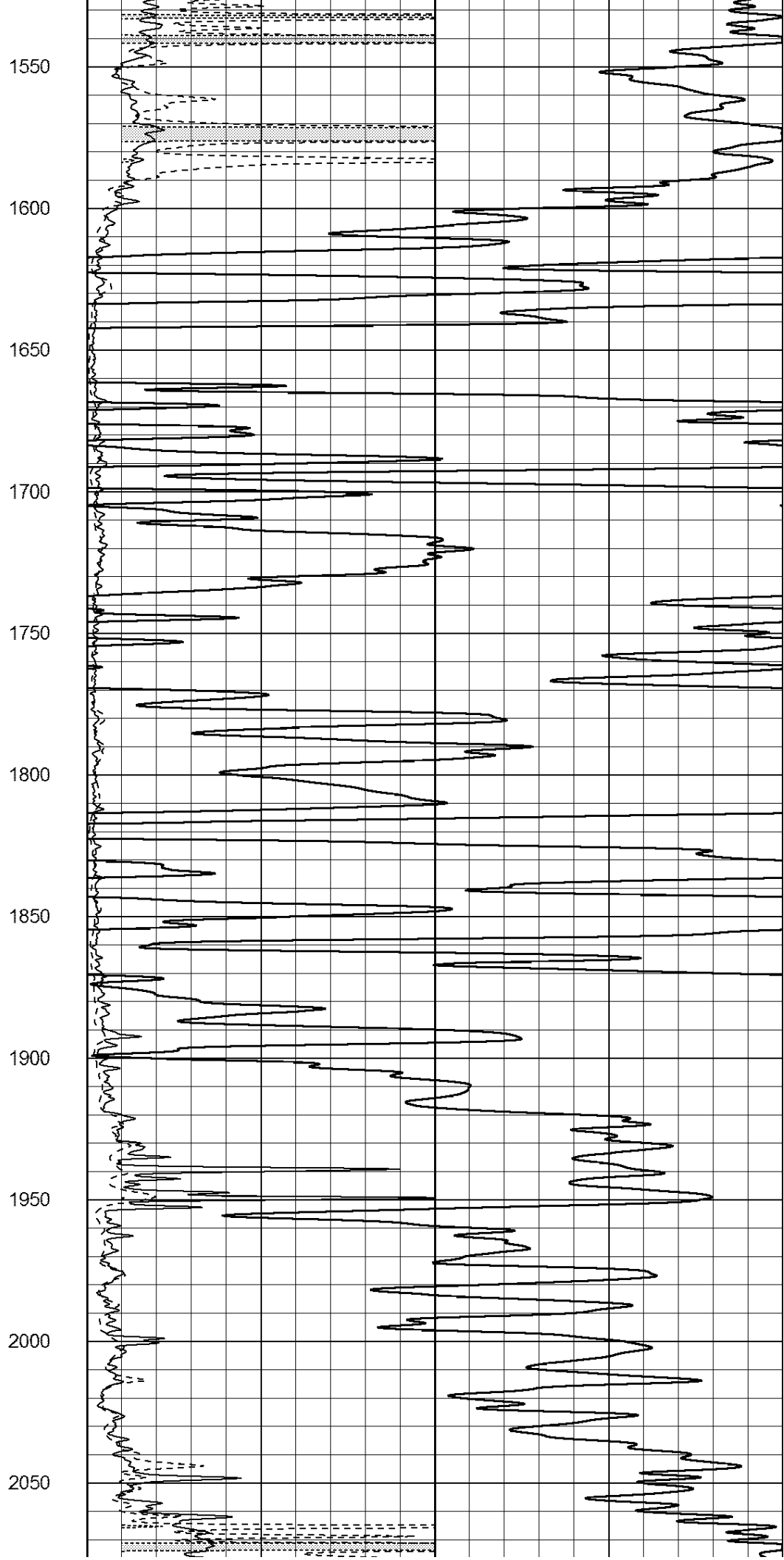
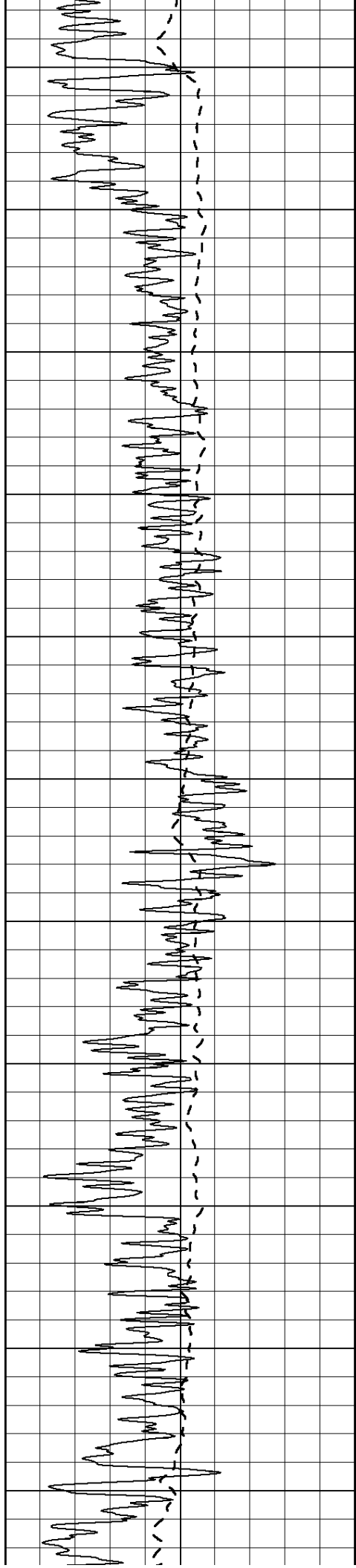
1000	CILD (mmho/m)	0
------	---------------	---

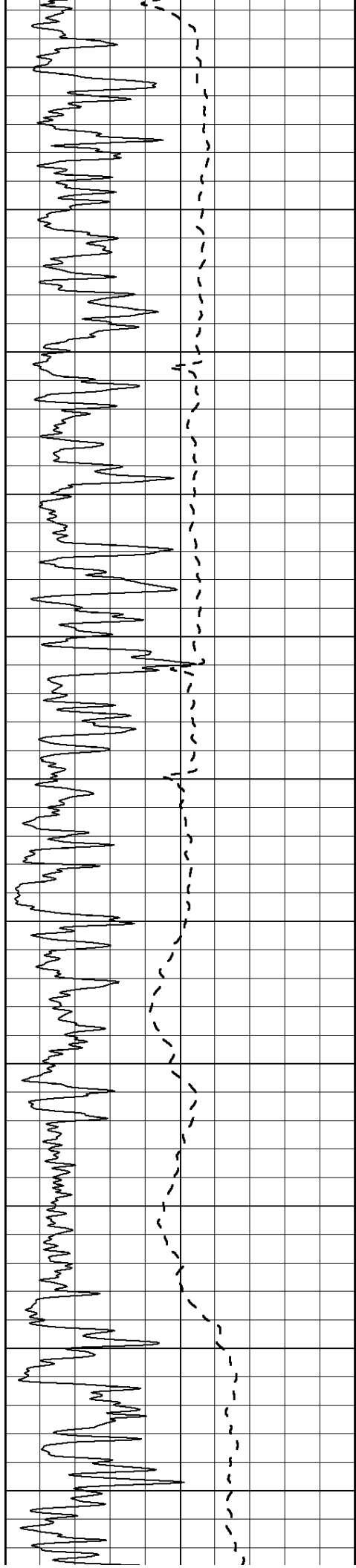
50	RILD X10 (Ohm-m)	500
50	RLL3 X10 (Ohm-m)	500











2100

2150

2200

2250

2300

2350

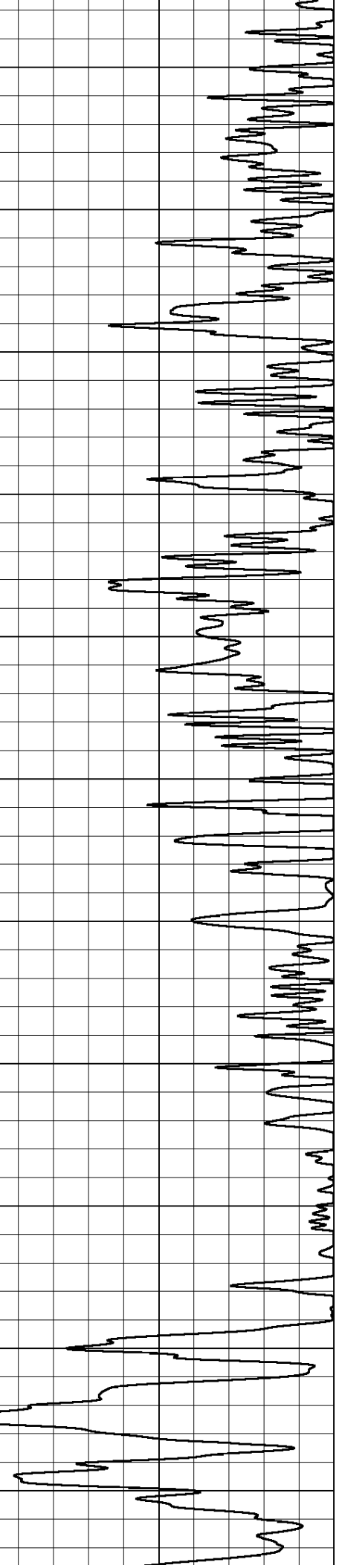
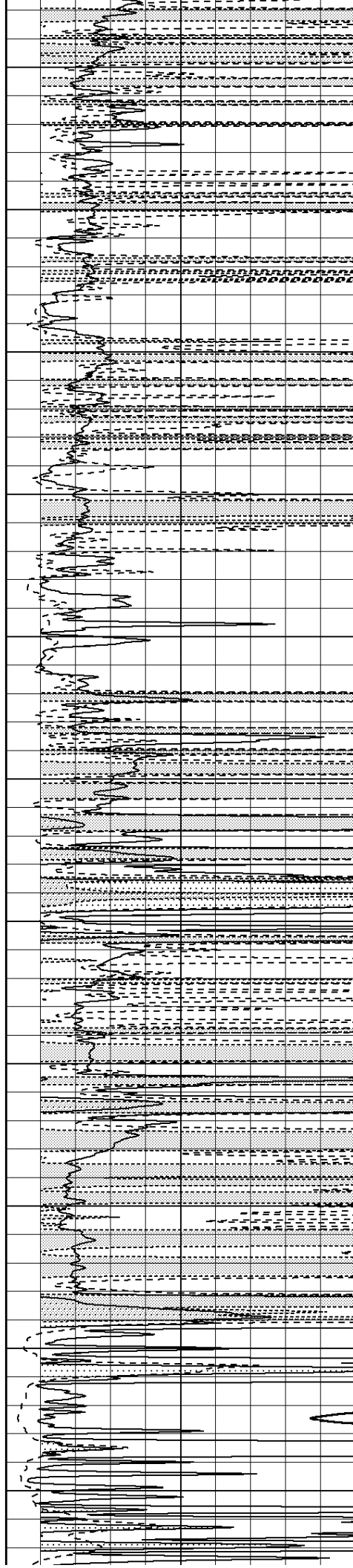
2400

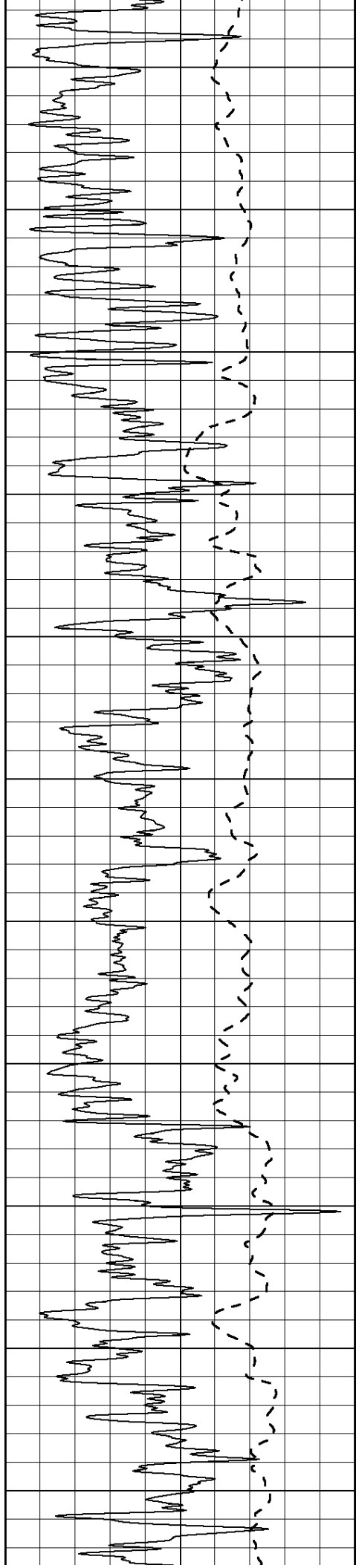
2450

2500

2550

2600





2650

2700

2750

2800

2850

2900

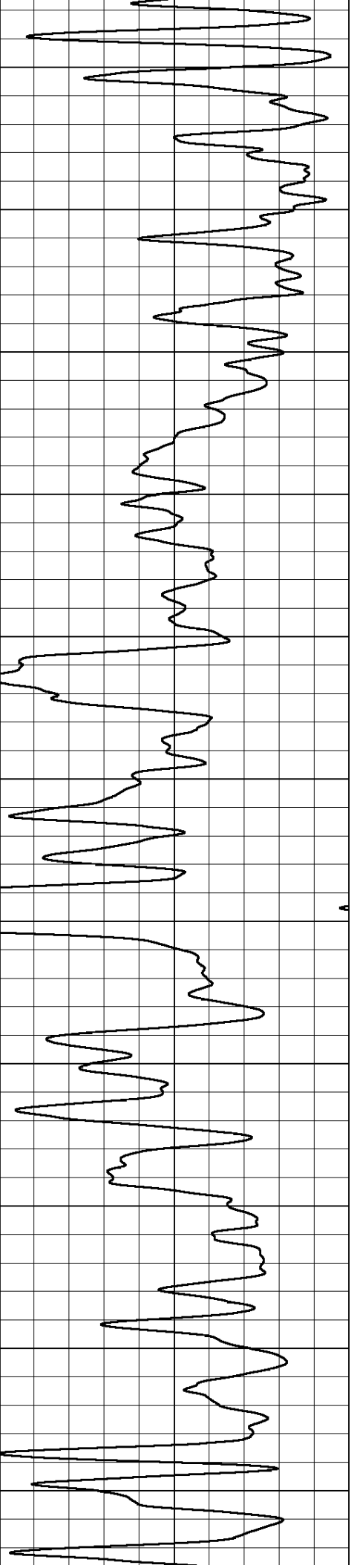
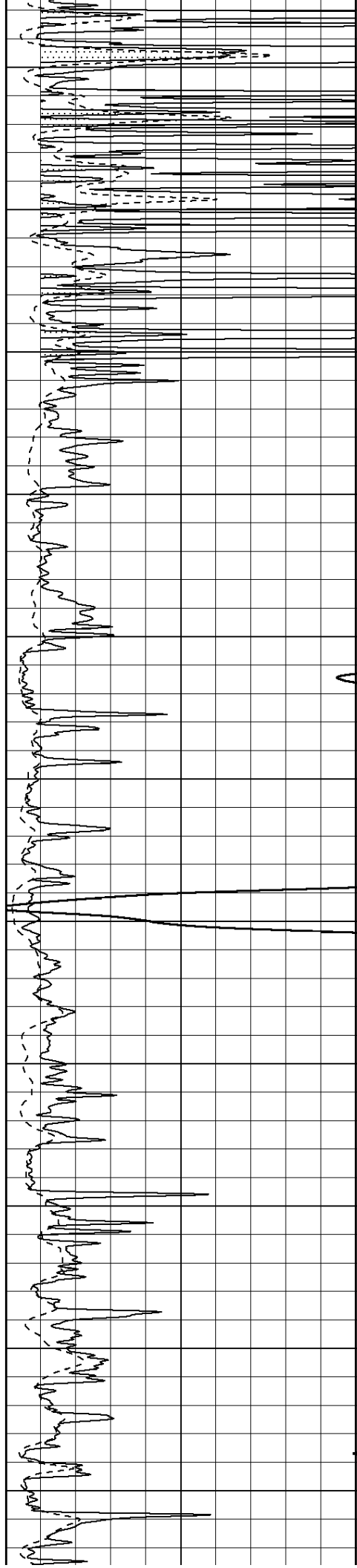
2950

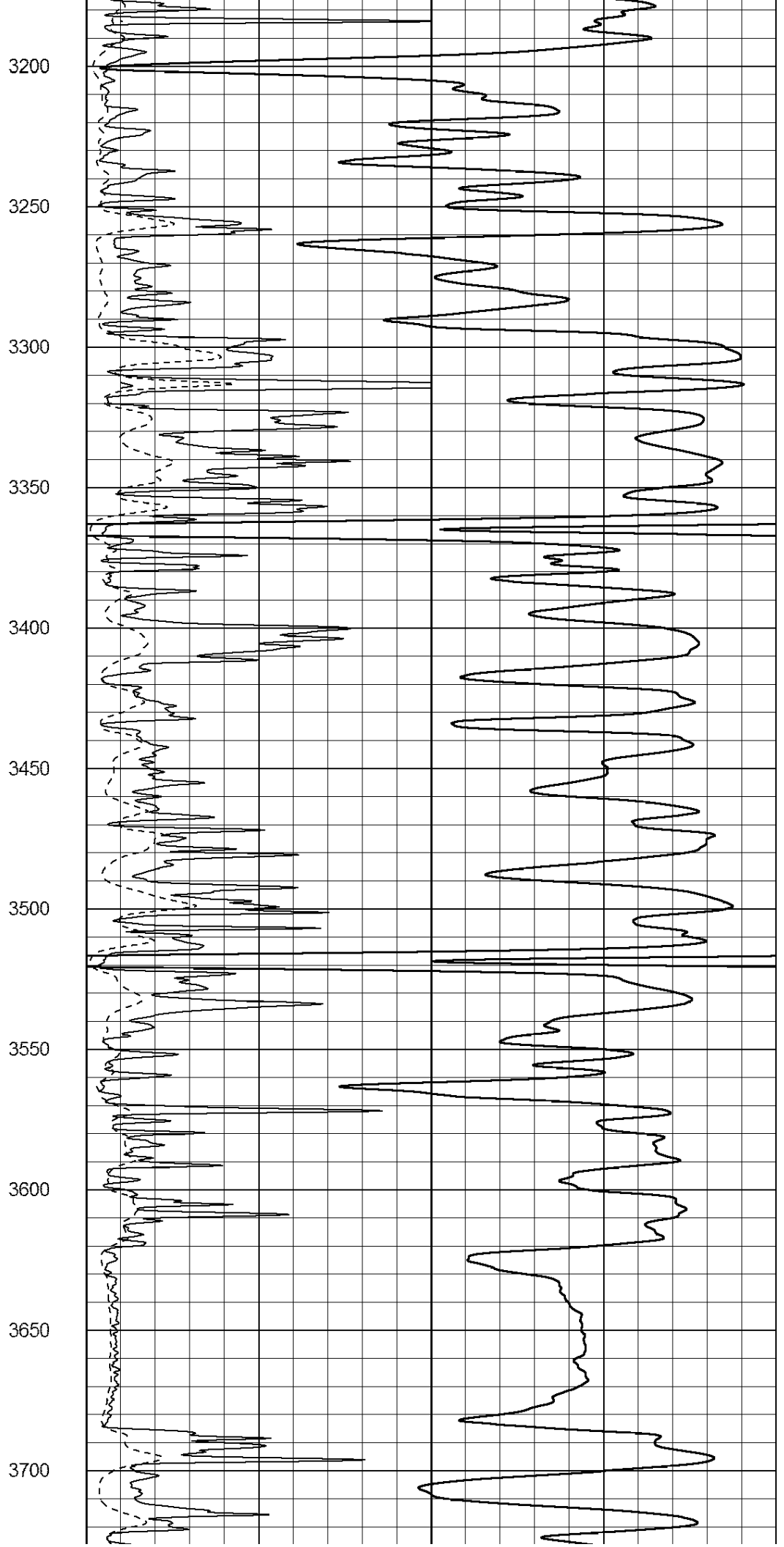
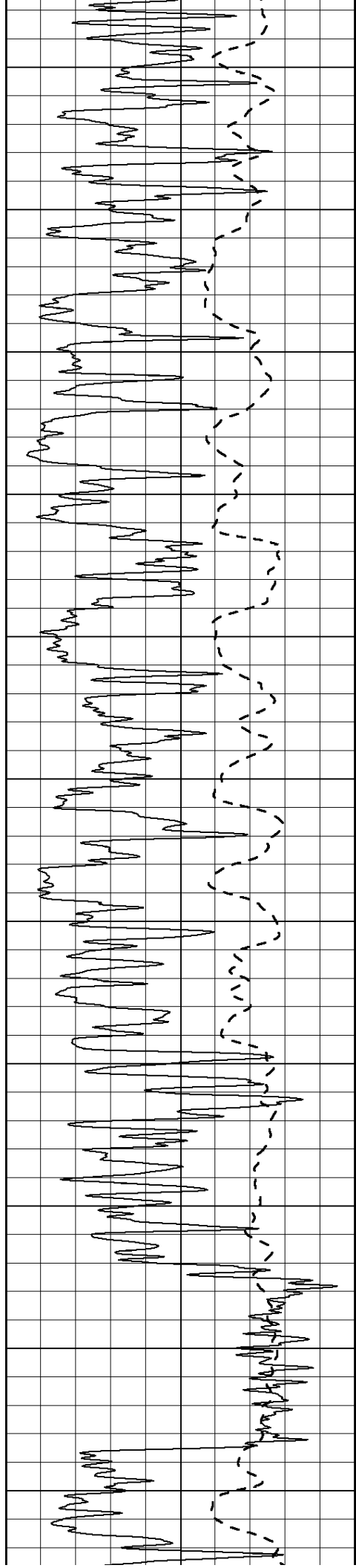
3000

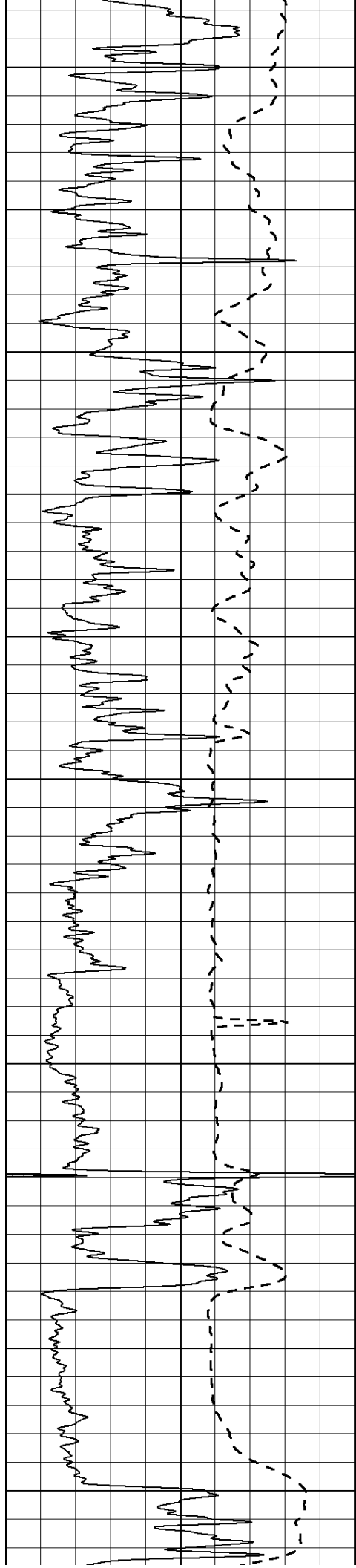
3050

3100

3150







3750

3800

3850

3900

3950

4000

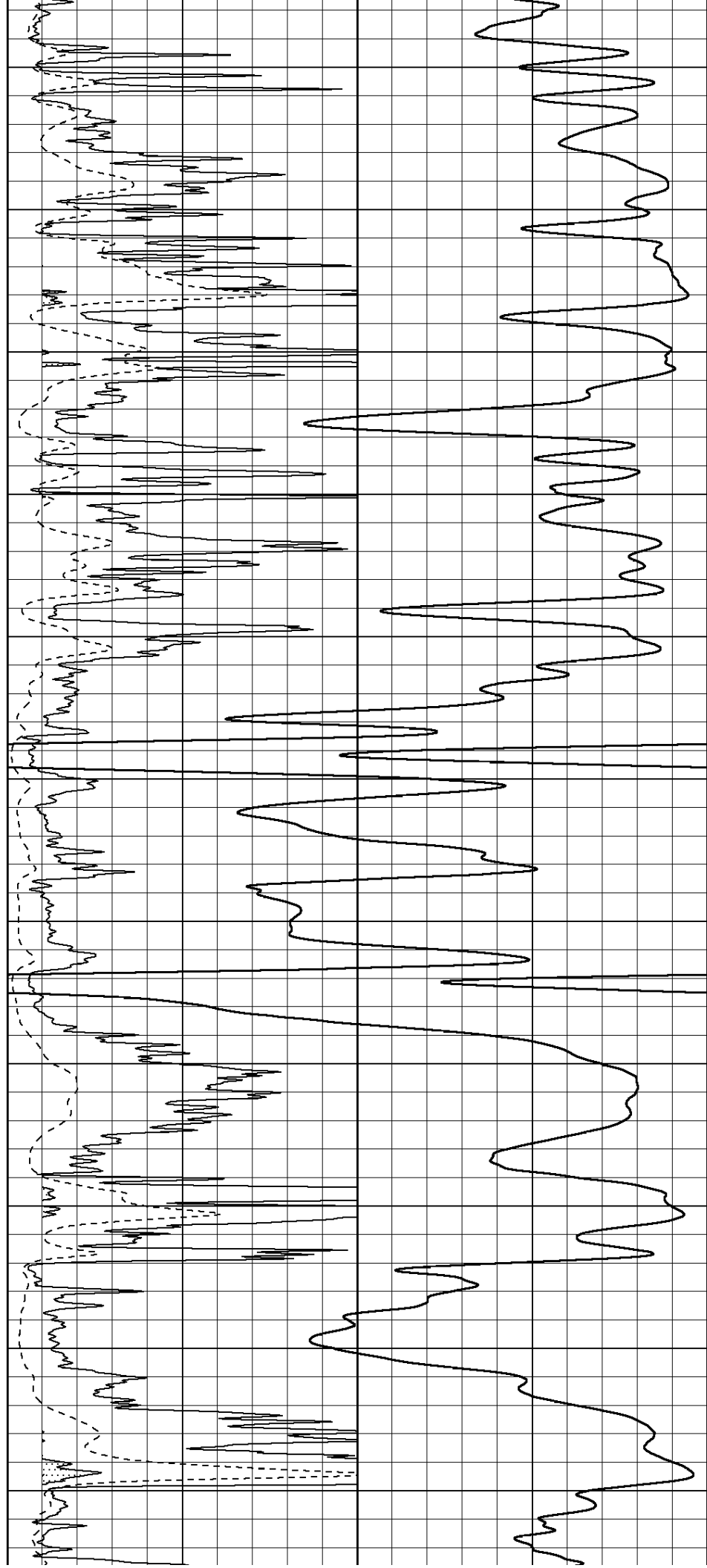
4050

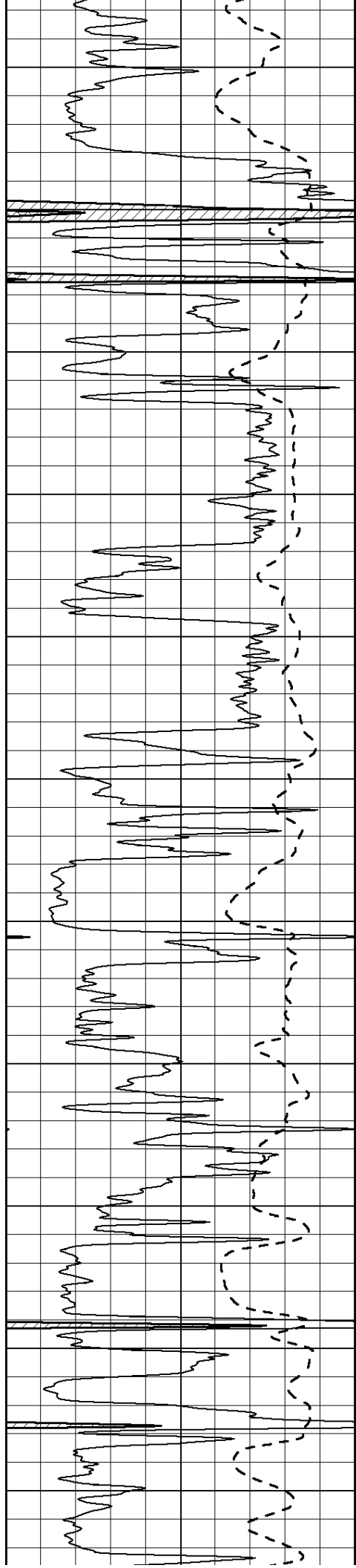
4100

4150

4200

4250





4300

4350

4400

4450

4500

4550

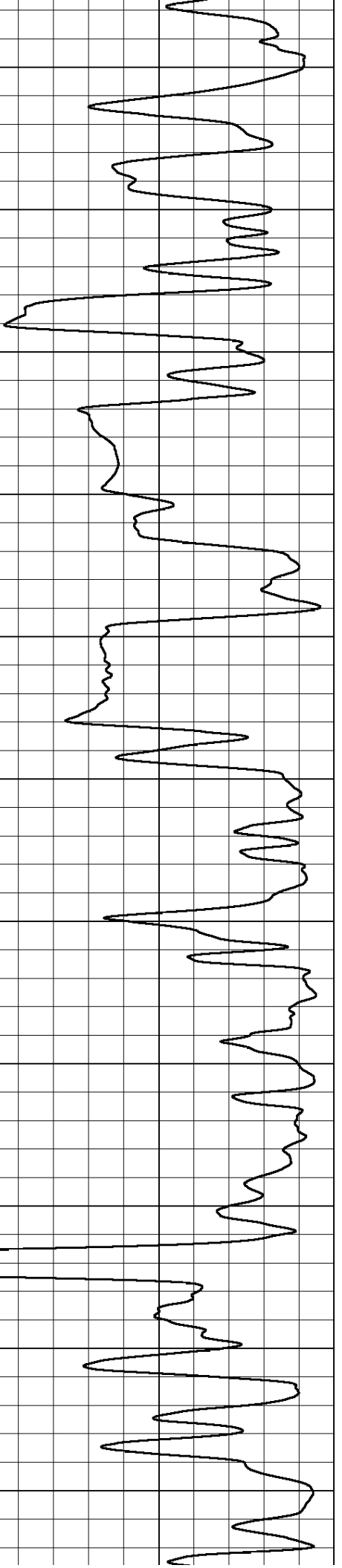
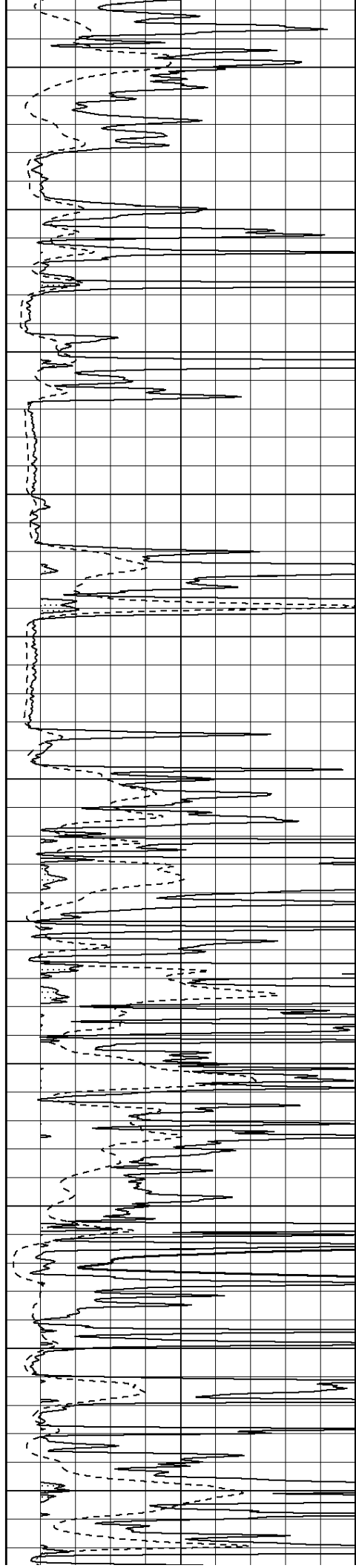
4600

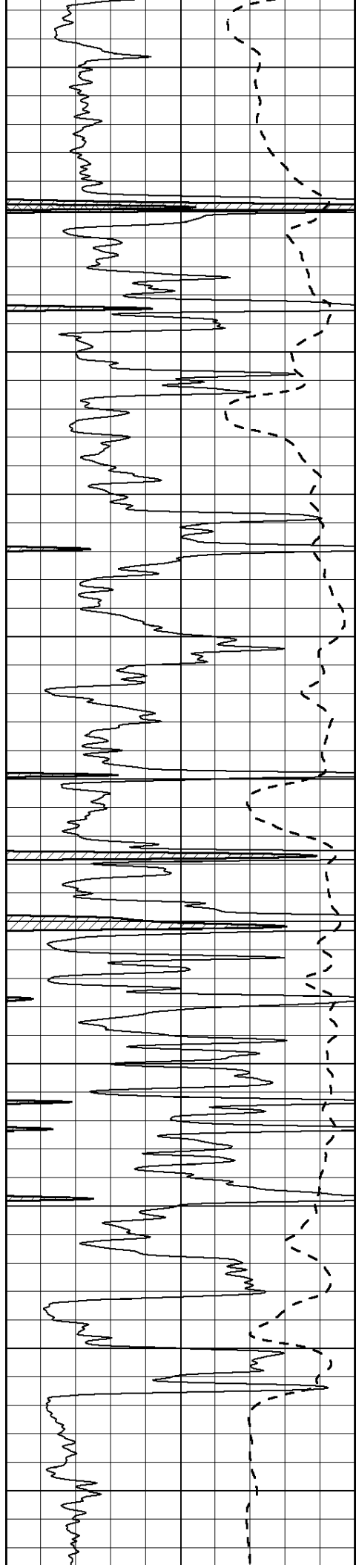
4650

4700

4750

4800





4850

4900

4950

5000

5050

5100

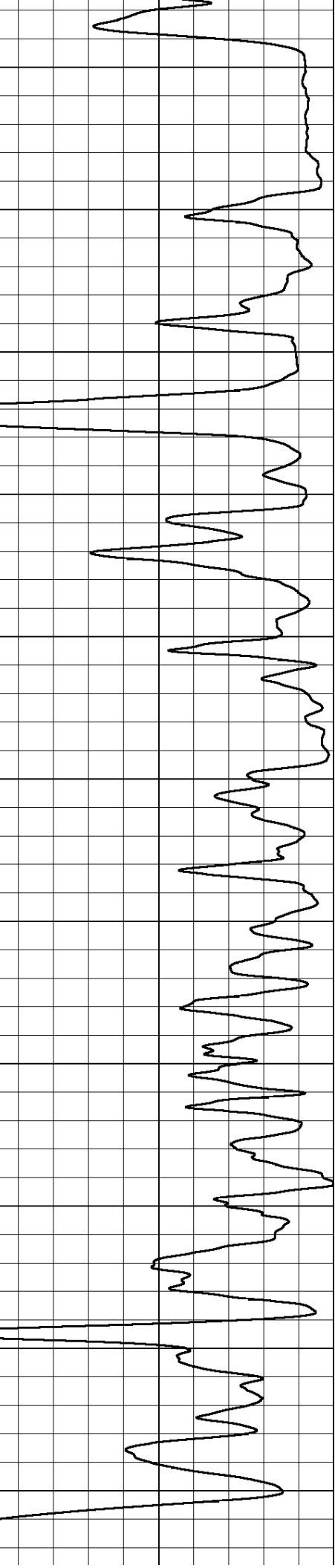
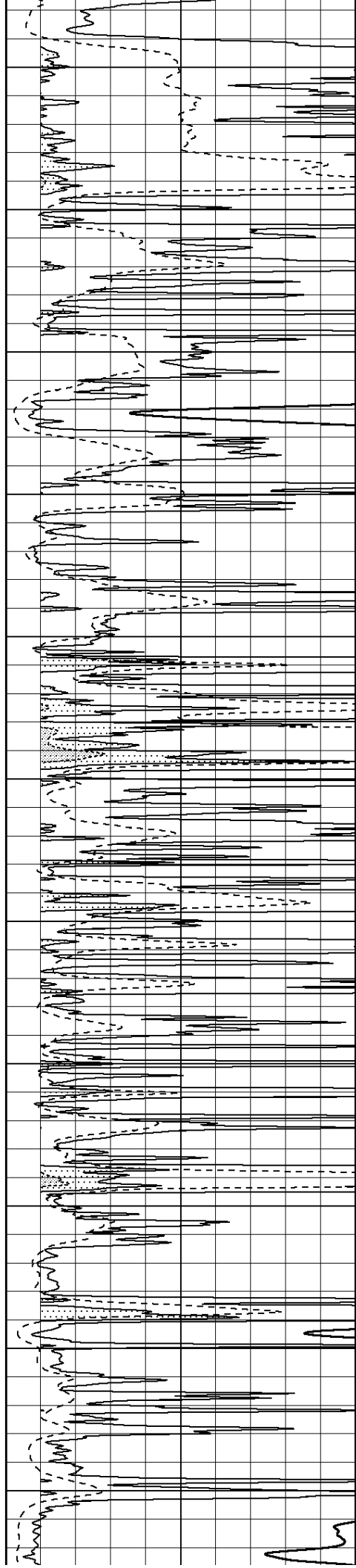
5150

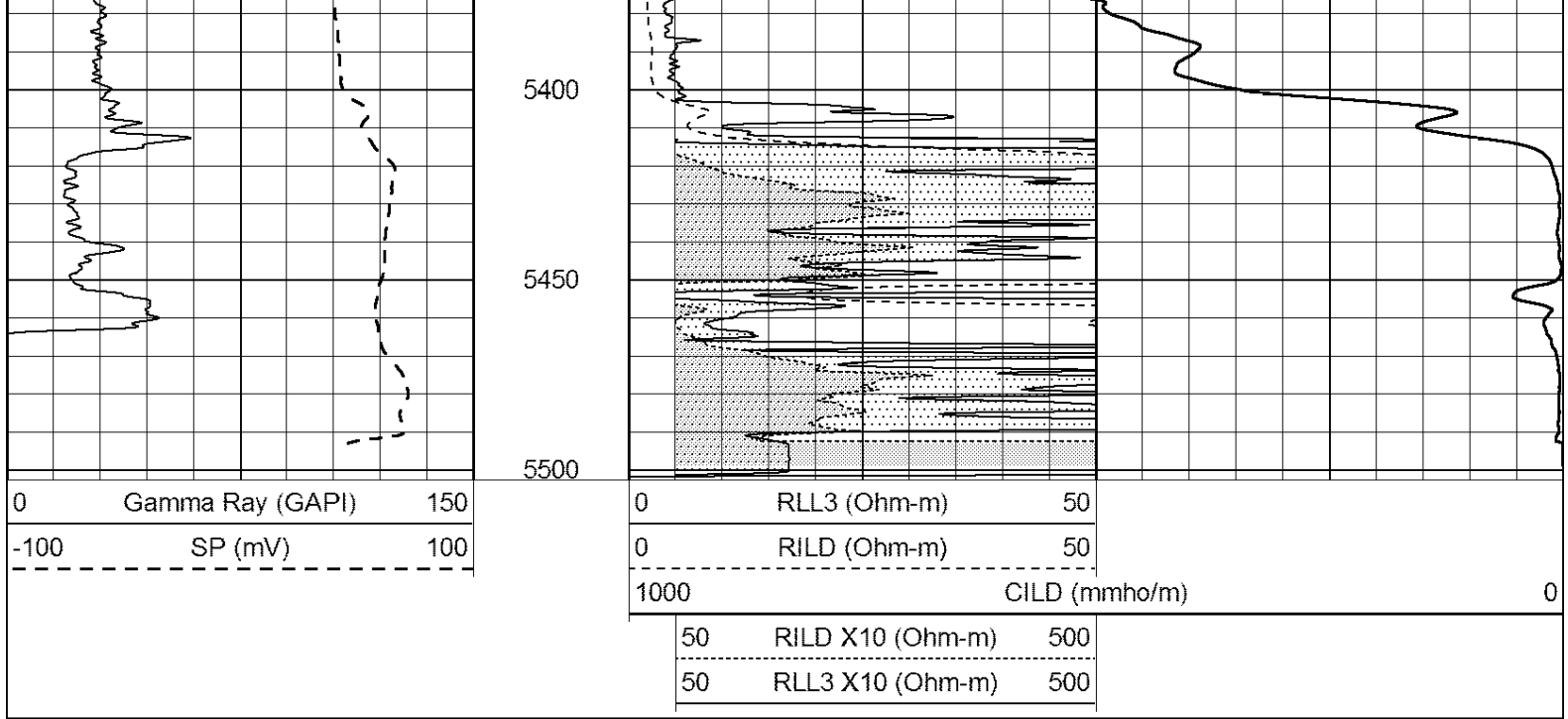
5200

5250

5300

5350





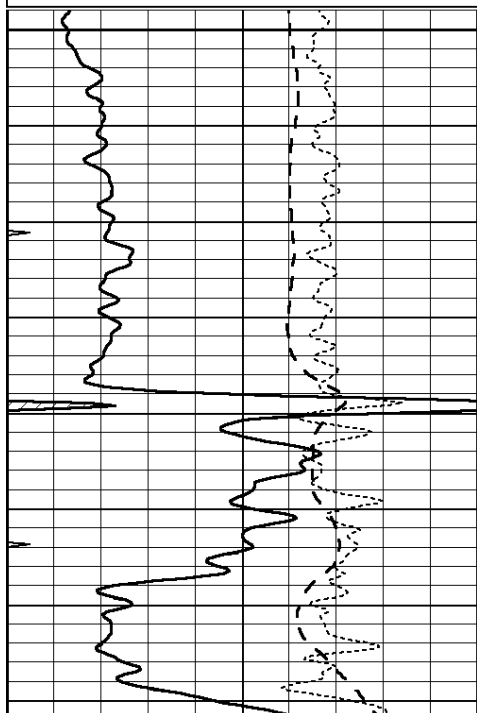
SUPERIOR
Hays,
Kansas

MAIN SECTION

Database File: 408608pe.db
 Dataset Pathname: pass3.7
 Presentation Format: dil
 Dataset Creation: Sun Mar 18 11:50:27 2012
 Charted by: Depth in Feet scaled 1:240

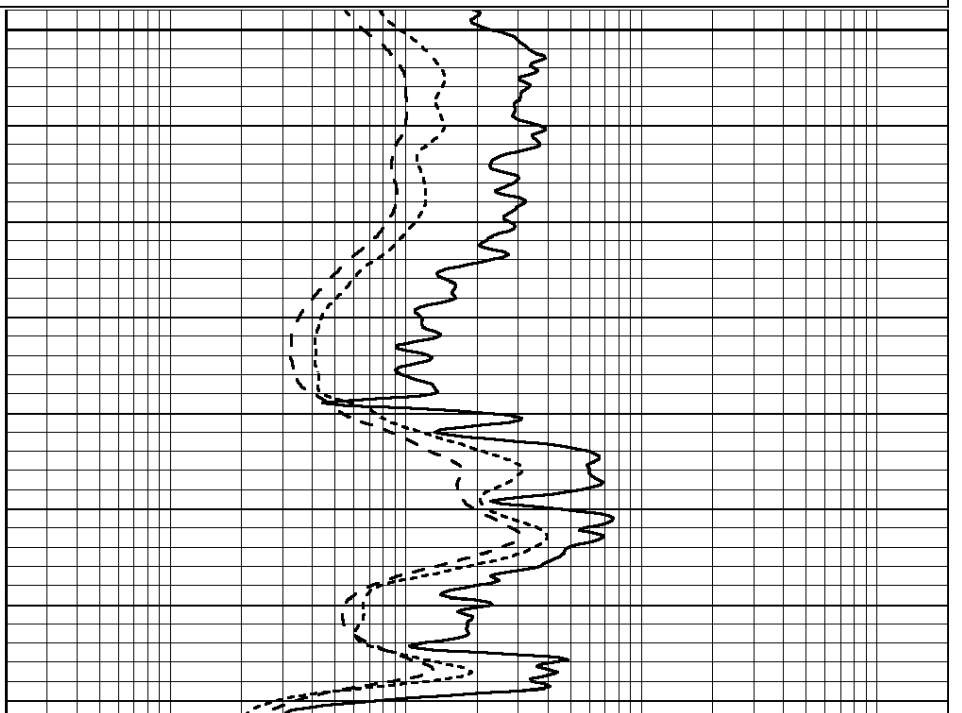
0	GAMMA RAY (GAPI)	150
-100	SP (mV)	100
-250	Rxo/Rt	50
0	MINMK	20

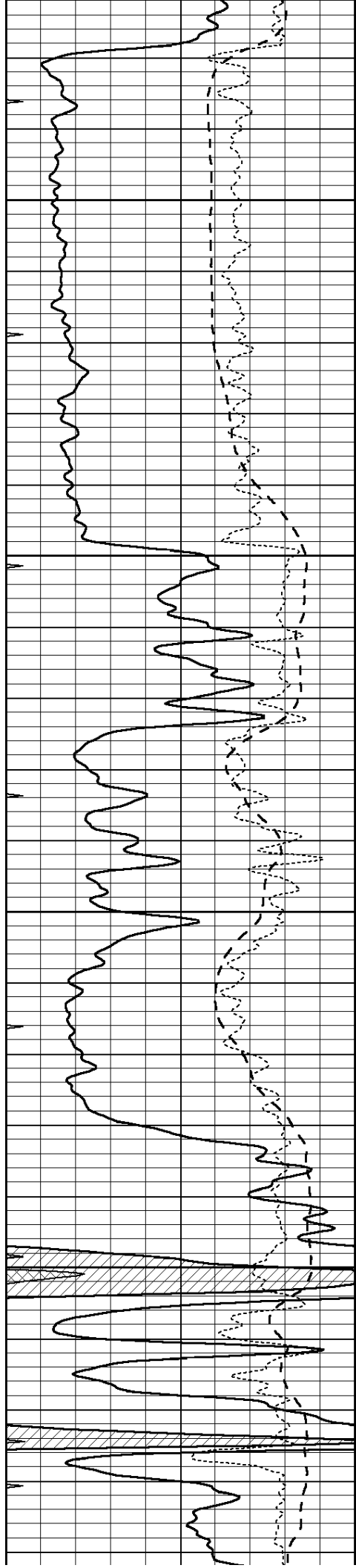
0.2	SHALLOW GUARD (Ohm-m)	2000
0.2	DEEP INDUCTION (Ohm-m)	2000
0.2	MEDIUM INDUCTION (Ohm-m)	2000



4100

4150



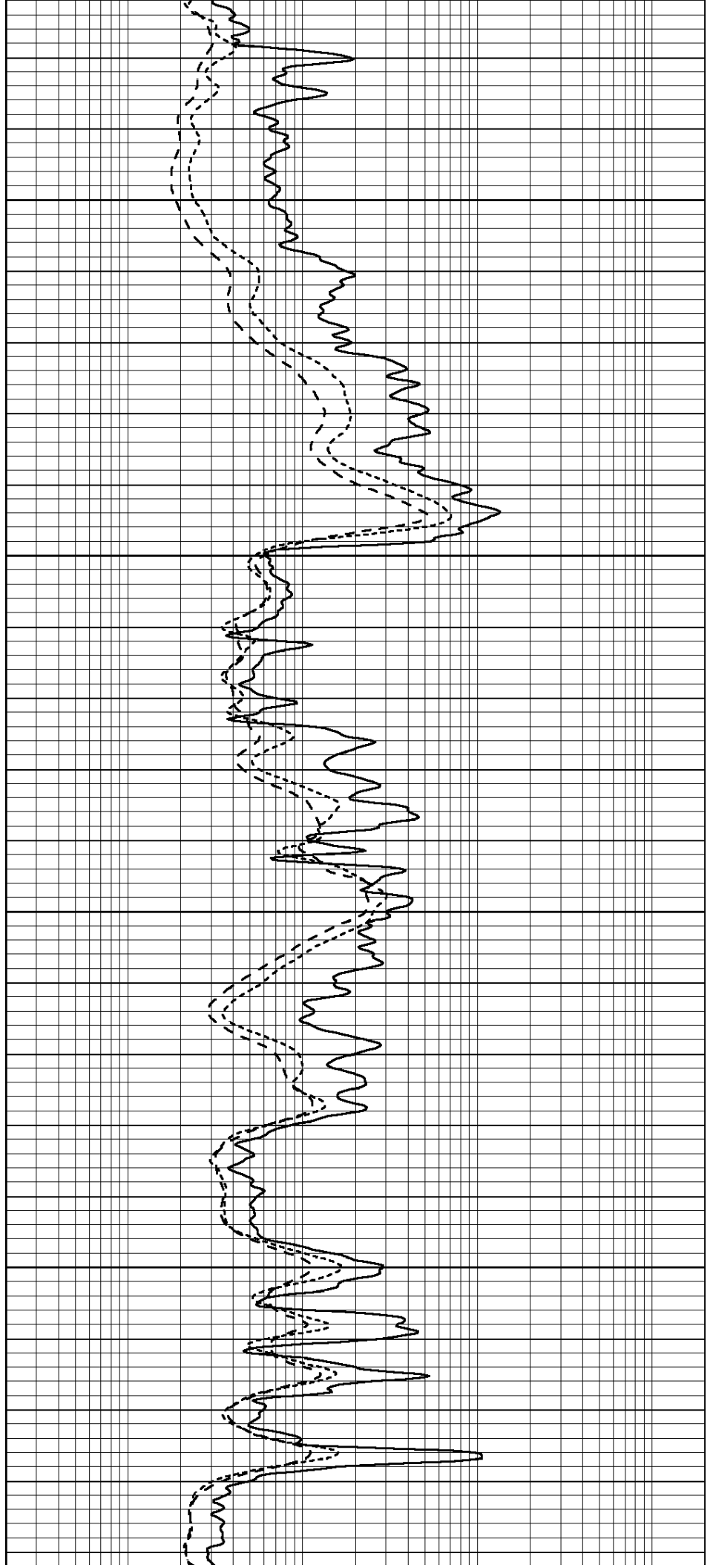


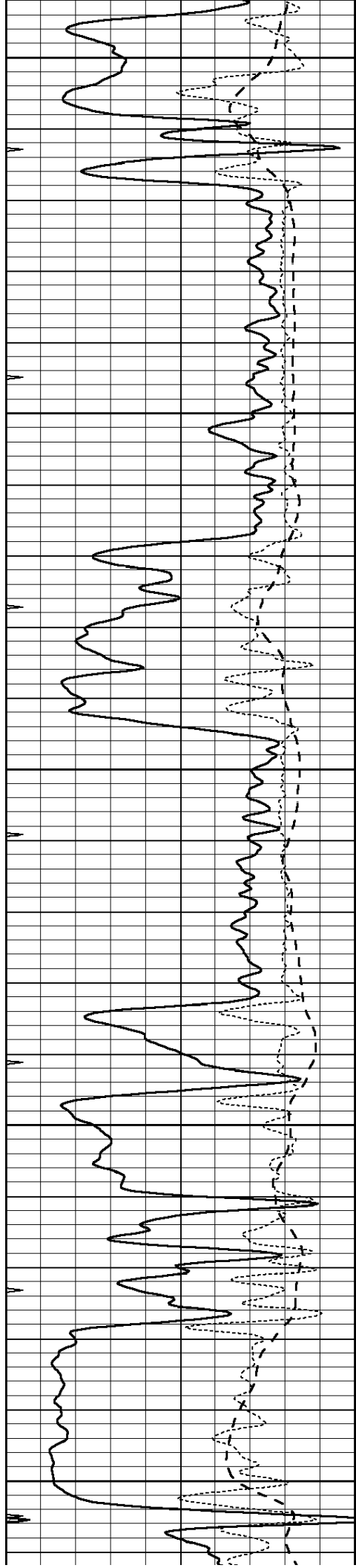
4200

4250

4300

4350





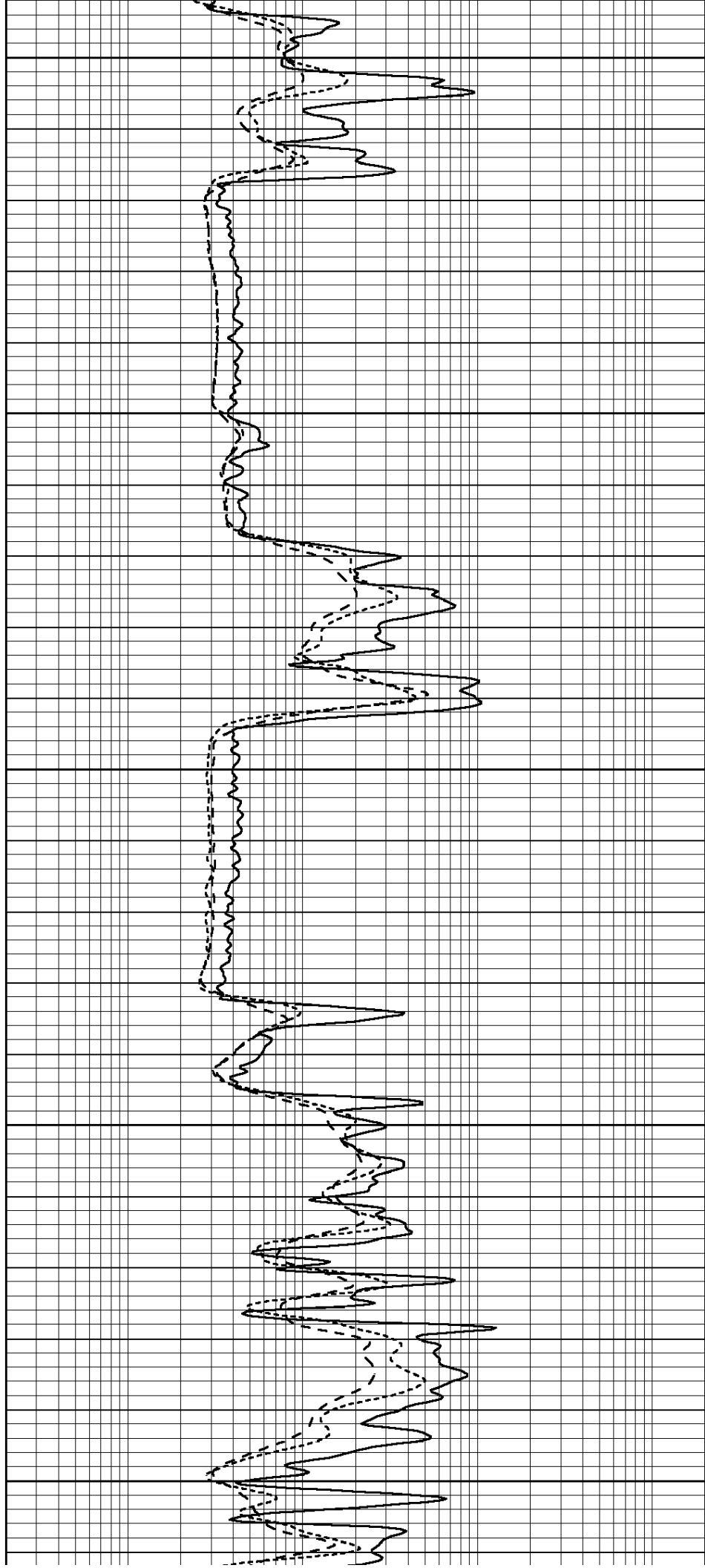
4400

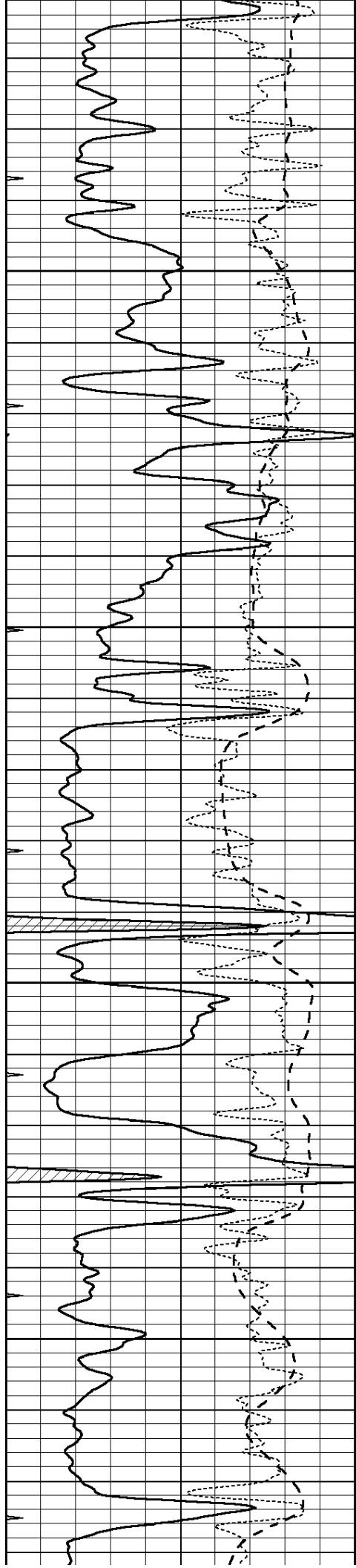
4450

4500

4550

4600



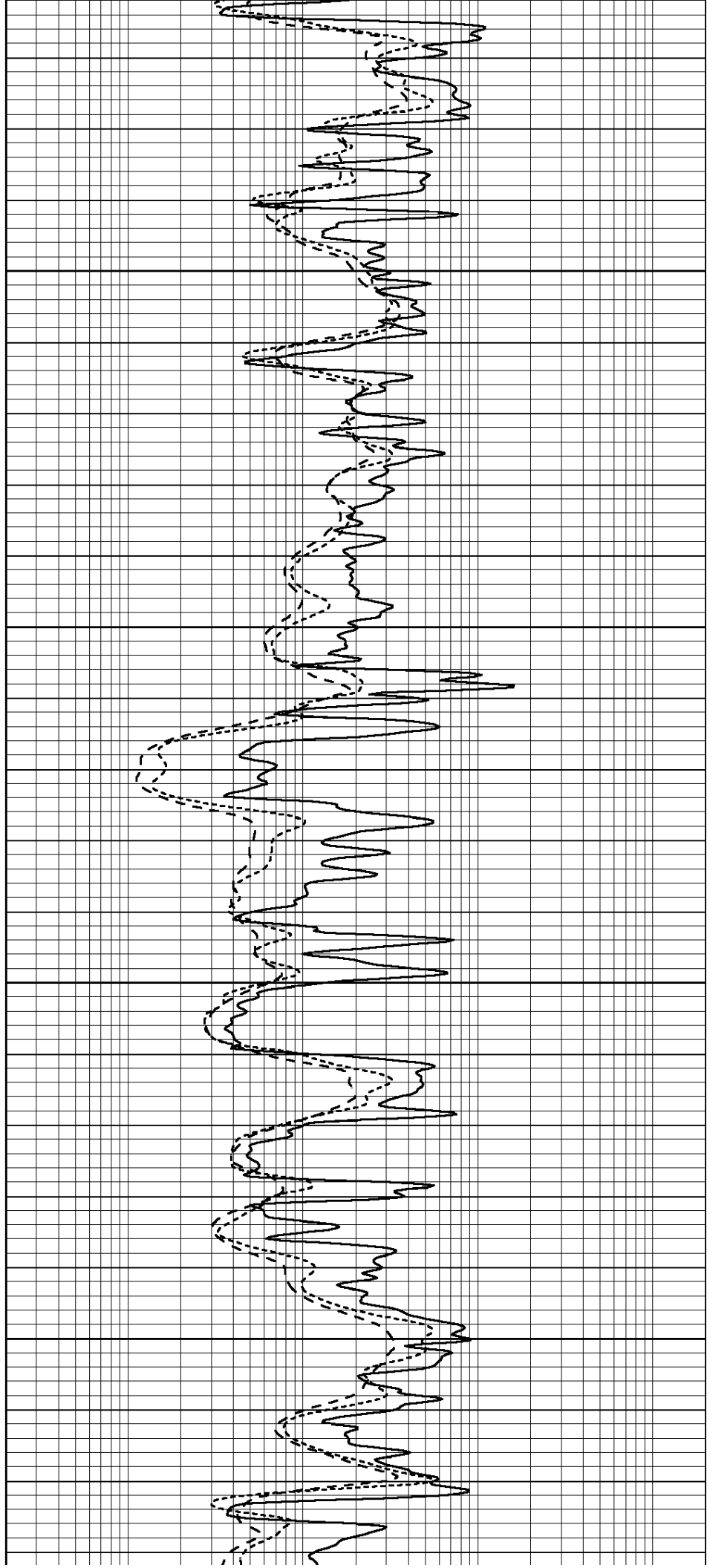


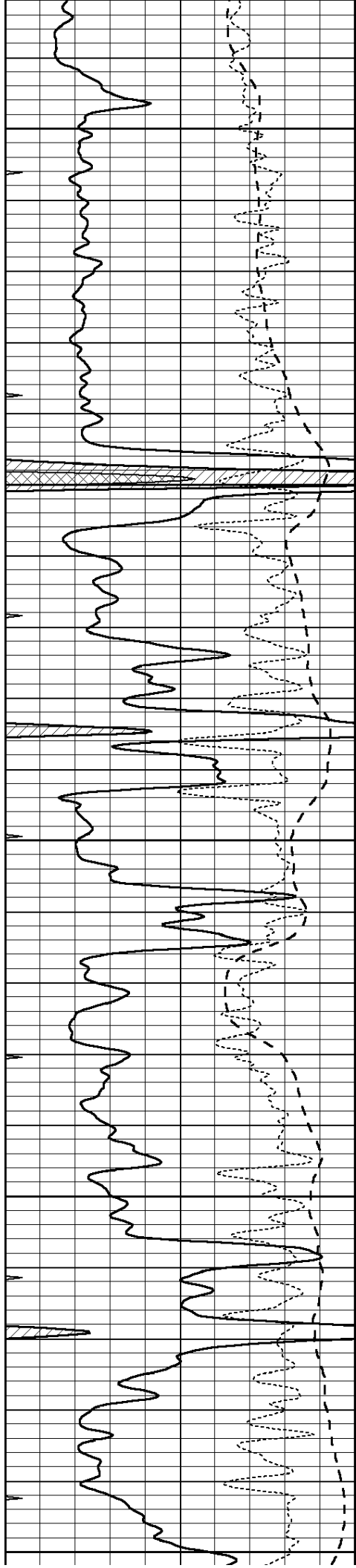
4650

4700

4750

4800





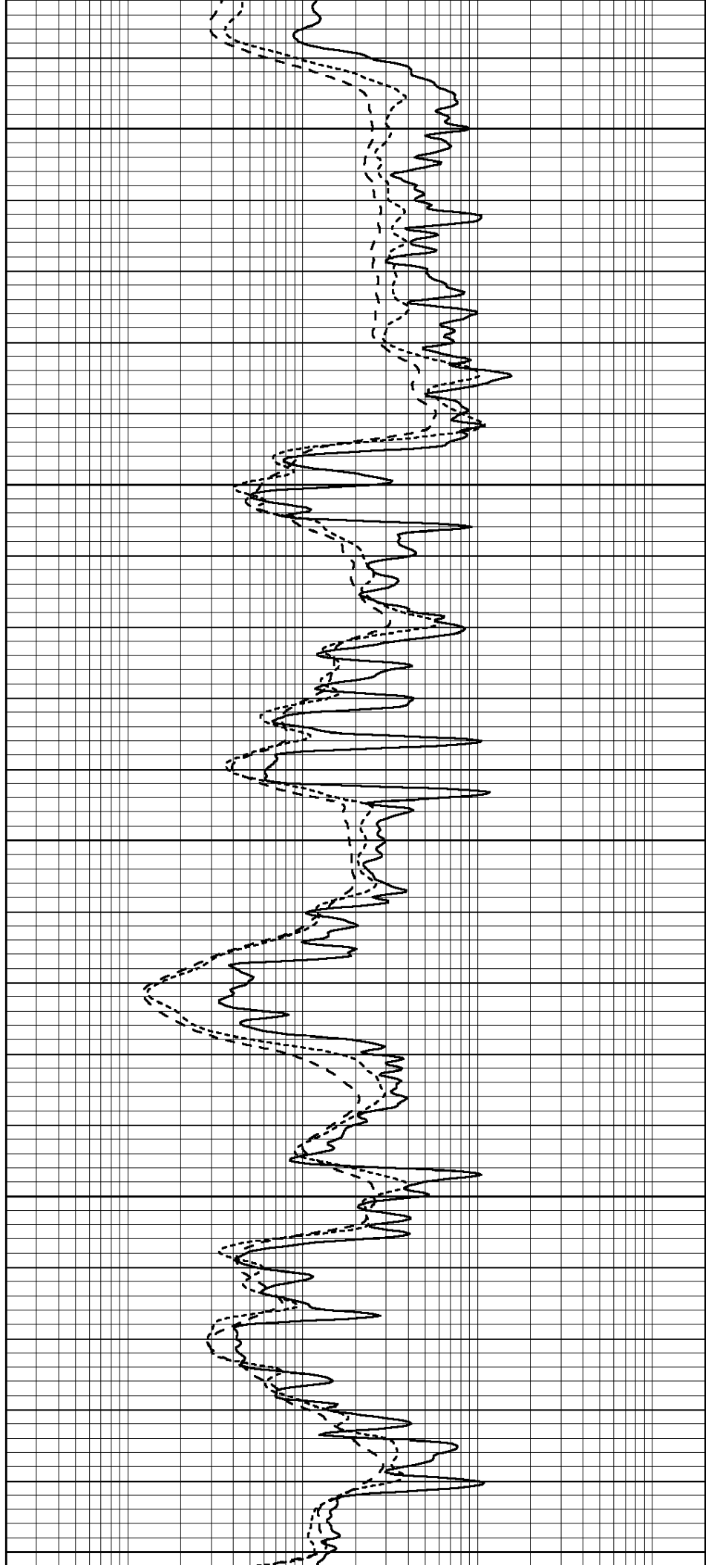
4850

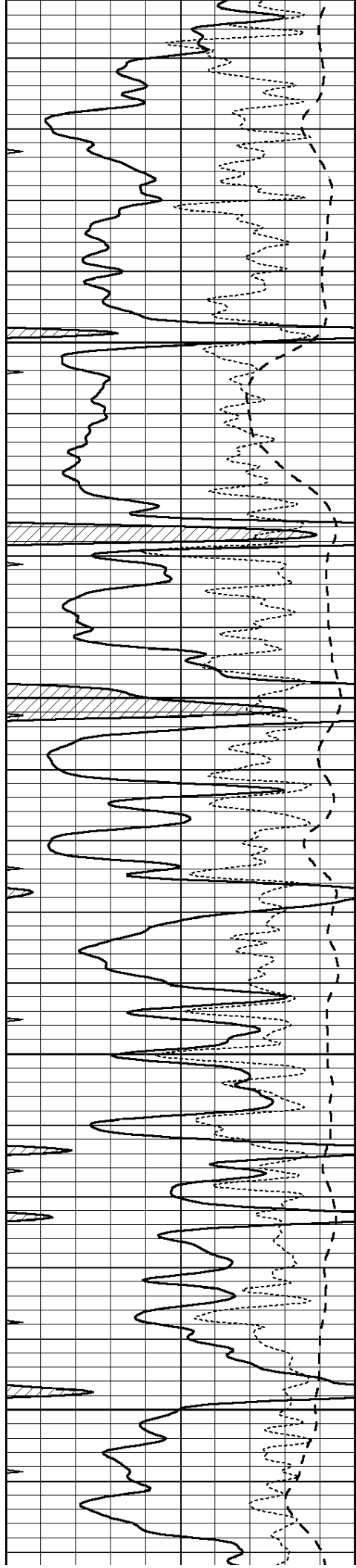
4900

4950

5000

5050



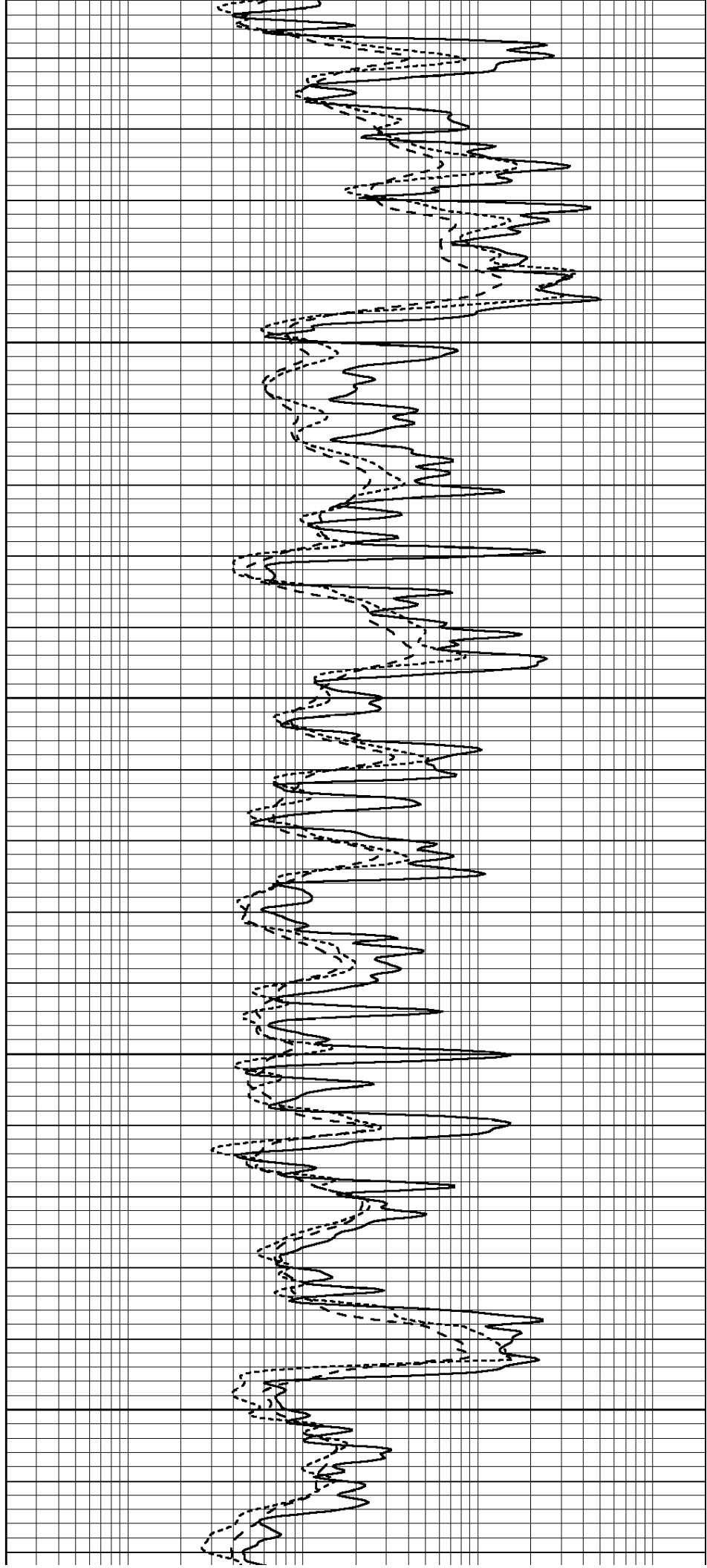


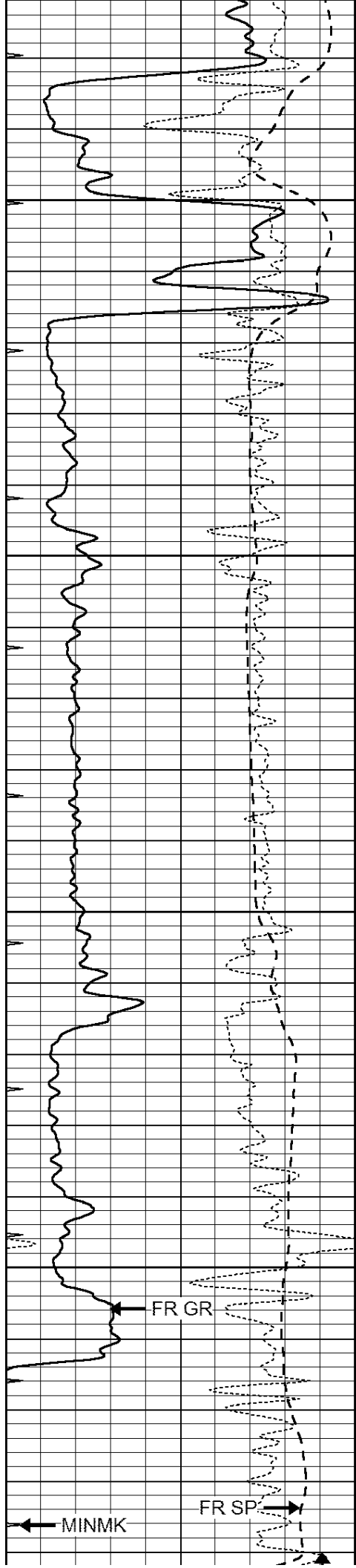
5100

5150

5200

5250



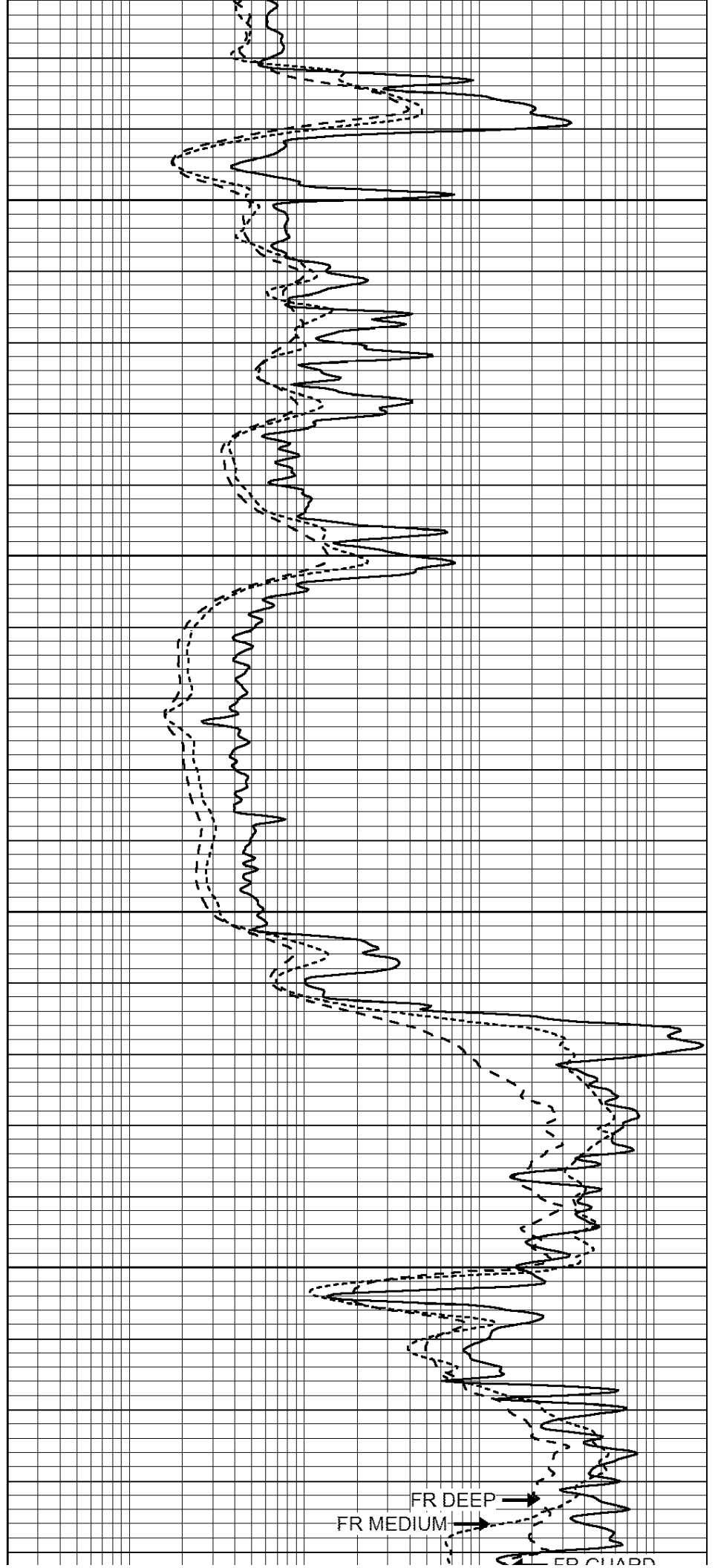


5300

5350

5400

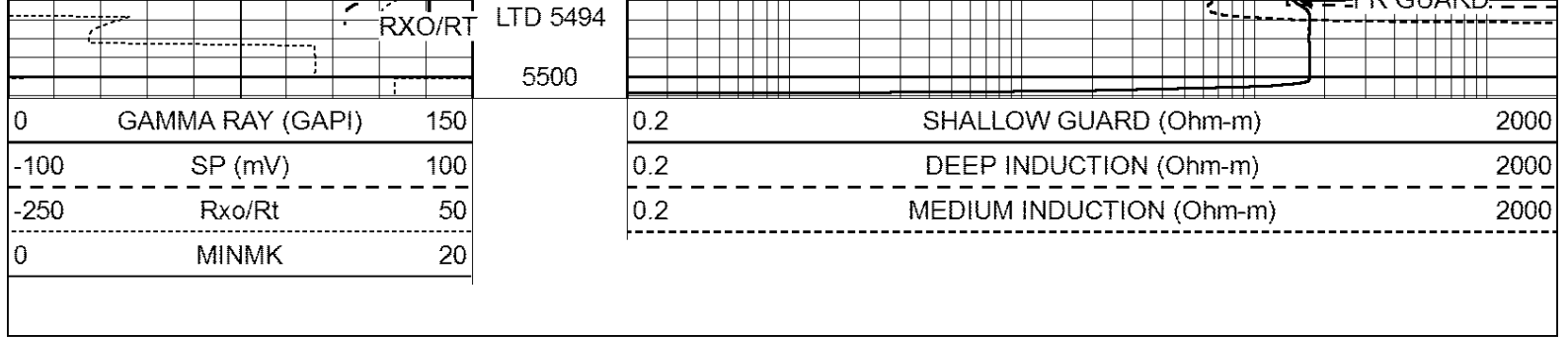
5450



FR DEEP →

FR MEDIUM →

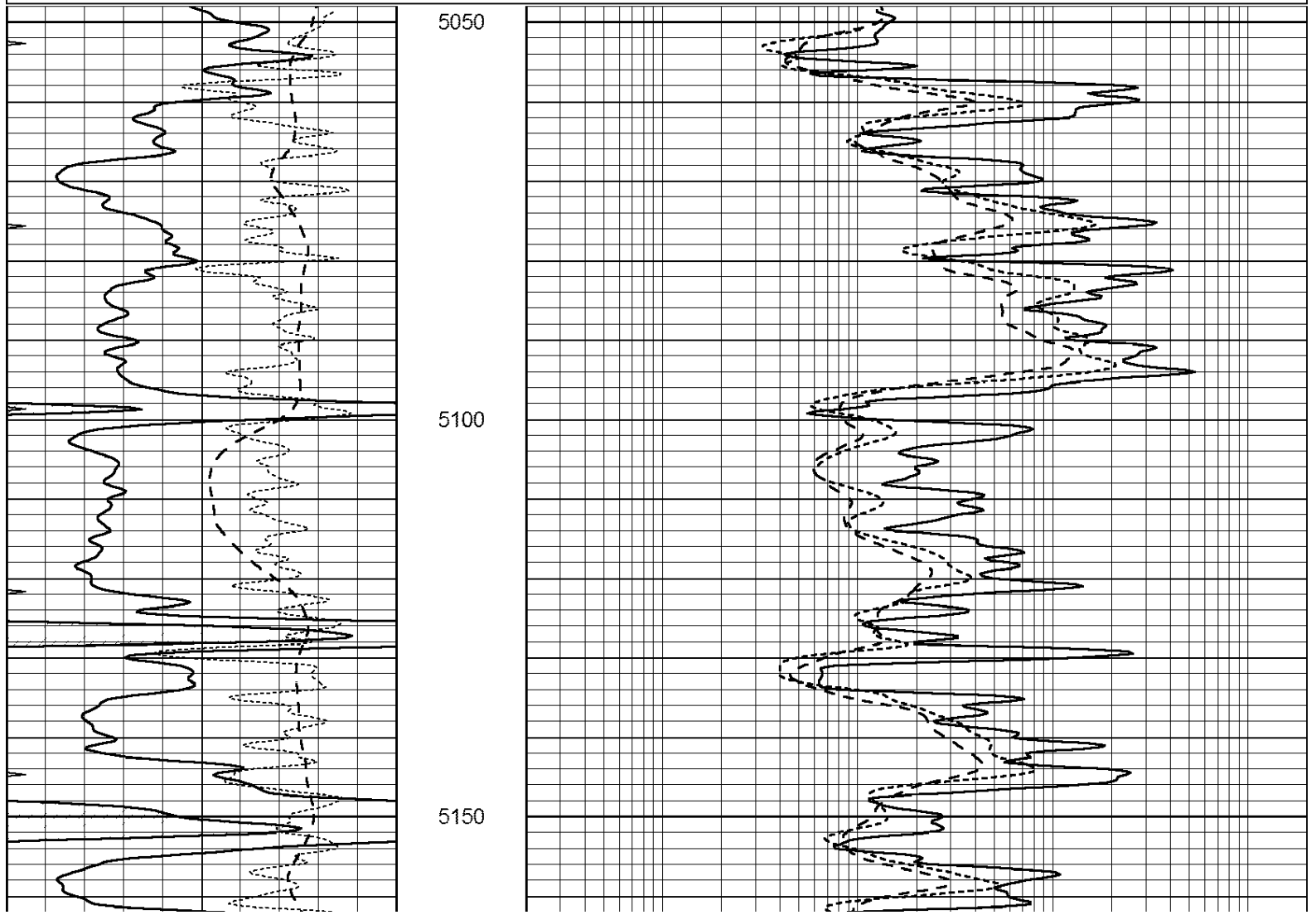
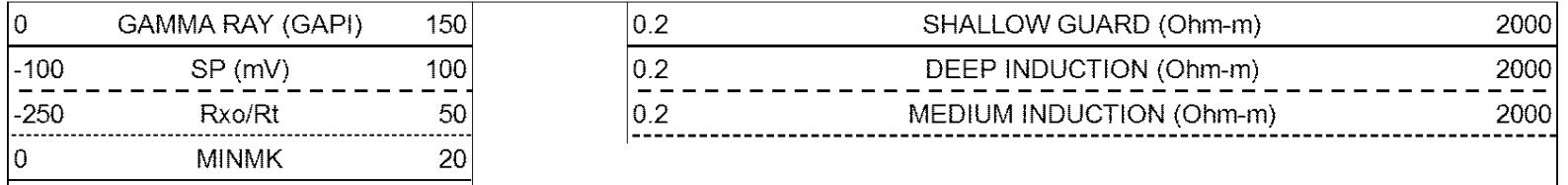
ED CHADD

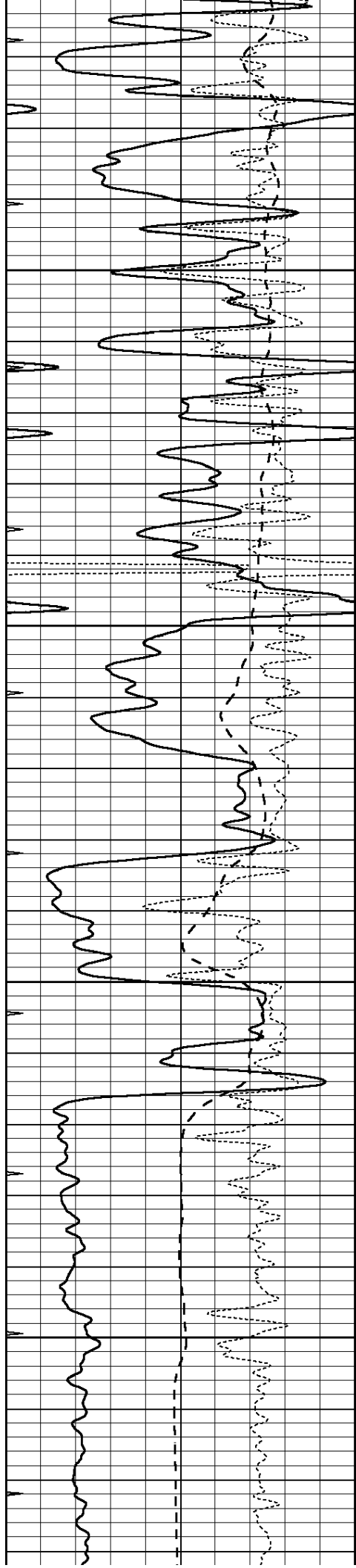


SUPERIOR
Hays,
Kansas

REPEAT SECTION

Database File: 408608pe.db
 Dataset Pathname: pass2.5
 Presentation Format: dil
 Dataset Creation: Sun Mar 18 10:19:25 2012
 Charted by: Depth in Feet scaled 1:240



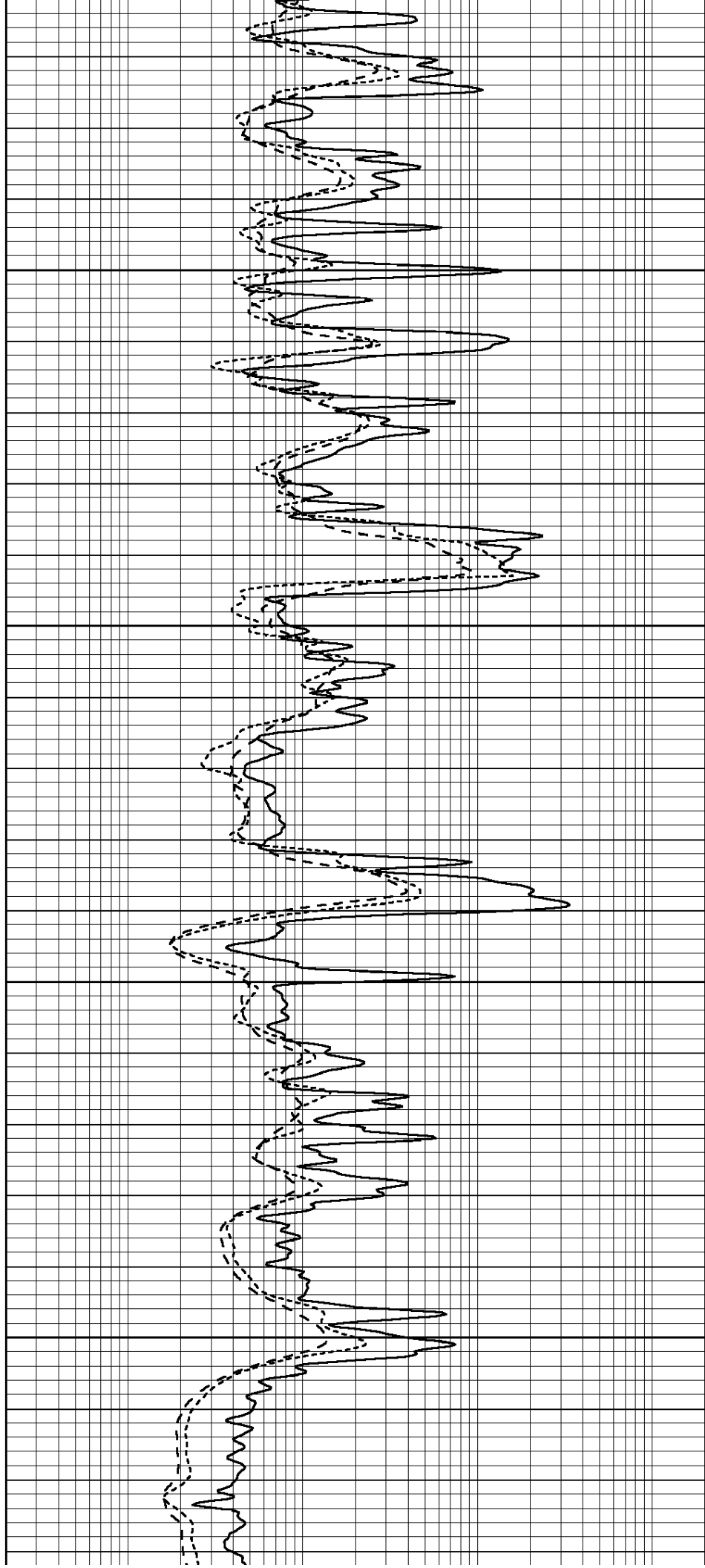


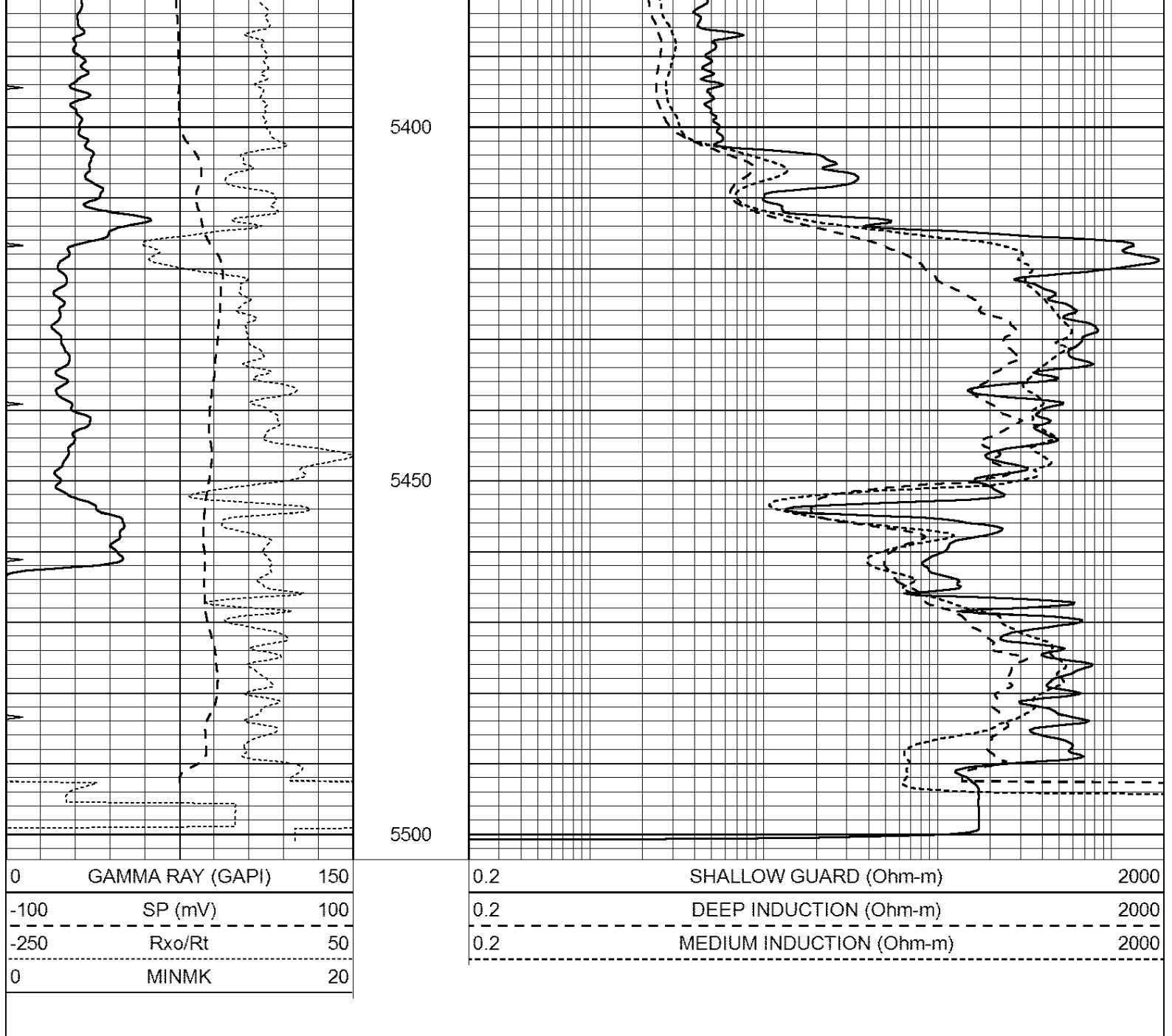
5200

5250

5300

5350





Calibration Report

Database File: 408608pe.db
 Dataset Pathname: pass3.7
 Dataset Creation: Sun Mar 18 11:50:27 2012

Dual Induction Calibration Report

Serial-Model: DIL3-GEAR
 Performed: Sun Mar 18 09:01:29 2012

Loop:	Readings			References			Results	
	Air	Loop		Air	Loop		m	b
Deep	0.011	0.656	V	0.000	400.000	mmho/m	640.000	7.000
Medium	0.013	0.740	V	0.000	462.500	mmho/m	700.000	-7.000
Internal:	Zero			Zero			m	b
Deep	0.002	0.645	V	0.000	400.000	mmho/m	622.059	-1.071
Medium	0.007	0.740	V	0.000	462.500	mmho/m	631.393	-4.555

Litho Density Calibration Report
 Serial: 006 Model: PRB
 Performed Sun Aug 15 09:48:41 2010

Litho Density Calibration

	Background	Magnesium	Aluminum	Sandstone	
Window 1	1686.6	11612.8	3932.0	12718.8	cps
Window 2	1531.4	9204.7	3267.8	9851.9	cps
Window 3	1198.3	4733.6	1952.5	4920.6	cps
Window 4	317.3	321.2	325.9	303.6	cps
Long Space	0.0	7673.3	1736.4	8320.4	cps
Short Space	1.7	2548.5	1657.2	2628.8	cps
Rho		1.7100	2.5900	1.3800	g/cc
Pe			2.5700	1.5500	
Rib Angle	: 43.8	Rib Slope	: 0.961	Density/Spine Ratio	: 0.569
Spine Angle	: 73.8	Spine Slope	: 3.453	Spine Intercept	: -18.1

Caliper

	Readings	Reference	
Low Ref	4.0	8.3	
High Ref	5.9	15.0	
	Gain: 3.5		Offset: -5.5

Compensated Neutron Calibration Report

Serial Number: 070808
 Tool Model: Probe

PRE-SURVEY VERIFICATION

Detector	Readings	Measured	Target
Short Space	cps		
Long Space	cps	pu	pu

POST-SURVEY VERIFICATION

Detector	Readings	Measured	Target
Short Space	cps		
Long Space	cps	pu	pu

Gamma Ray Calibration Report

Serial Number: 070559
 Tool Model: OPEN_GR
 Performed: Wed Mar 14 16:09:52 2012

Calibrator Value: 1.0 GAPI

Background Reading: 0.0 cps
 Calibrator Reading: 1.0 cps

Sensitivity: 0.3000 GAPI/cps