



SUPERIOR
Hays,
Kansas

MICRO
LOG

Company VINCENT OIL CORPORATION
Well CUER #1-28
Field ELC
County FORD
State KANSAS

Company	VINCENT OIL CORPORATION
Well	CUER #1-28
Field	ELC
County	FORD
State	KANSAS
Location:	API # : 15-057-20788-0000 330' FNL & 820' FWL
Permanent Datum	GROUND LEVEL
Log Measured From	KELLY BUSHING 13' A.G.L.
Drilling Measured From	KELLY BUSHING
SEC 28 TWP 29S RGE 22W	Elevation 2453
	Other Services CDL/CNL/PE DIL/SONIC
	Elevation K.B. 2466 D.F. 2464 G.L. 2453

Date	3/18/12
Run Number	TWO
Depth Driller	5497
Depth Logger	5494
Bottom Logged Interval	5474
Top Log Interval	4100
Casing Driller	8 5/8"@606'
Casing Logger	602
Bit Size	7 7/8"
Type Fluid in Hole	CHEMICAL MUD
Density / Viscosity	9.3/57
pH / Fluid Loss	10.0/9.2
Source of Sample	FLOWLINE
Rm @ Meas. Temp	.480@72F
Rmt @ Meas. Temp	.360@72F
Rmc @ Meas. Temp	.576@72F
Source of Rmf / Rmc	MEASUREMENT
Rm @ BHT	.266@130F
Time Circulation Stopped	6.5 HOURS
Time Logger on Bottom	9:30 A.M.
Maximum Recorded Temperature	130F
Equipment Number	4010
Location	HAYS, KANSAS
Recorded By	JEFF LUEBBERS
Witnessed By	JIM HALL

<<< Fold Here >>>

All interpretations are opinions based on inferences from electrical or other measurements and we cannot and do not guarantee the accuracy or correctness of any interpretation, and we shall not, except in the case of gross or willful negligence on our part, be liable or responsible for any loss, costs, damages, or expenses incurred or sustained by anyone resulting from any interpretation made by any of our officers, agents or employees. These interpretations are also subject to our general terms and conditions set out in our current Price Schedule.

Comments

THANK YOU FOR USING SUPERIOR WELL SERVICE HAYS, KANSAS (785) 628-6395
DIRECTIONS
KINGSDOWN, KS. (HWY 54 & RD. 125) 2S. ON "RD. 125", 2E., S. INTO

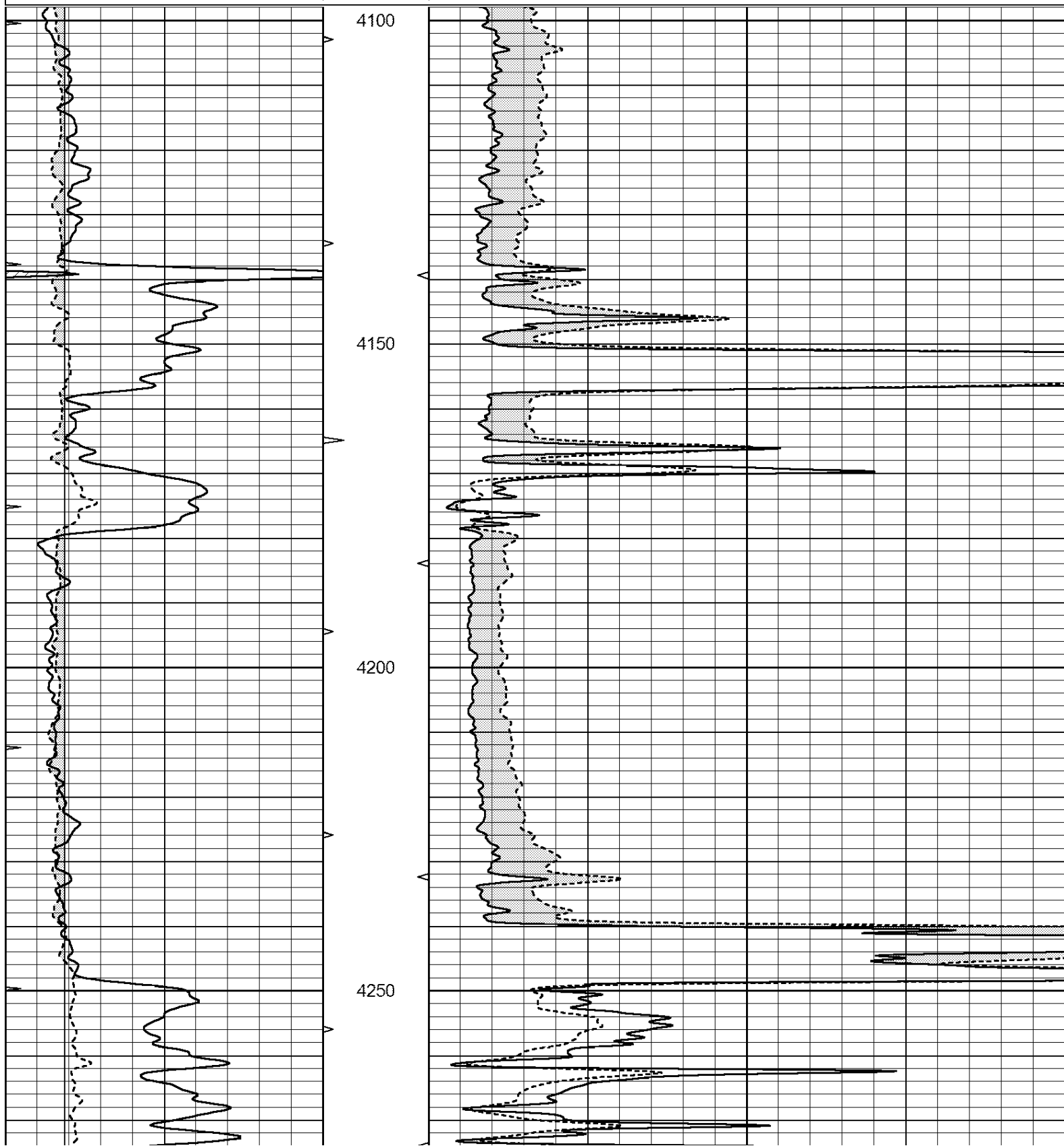


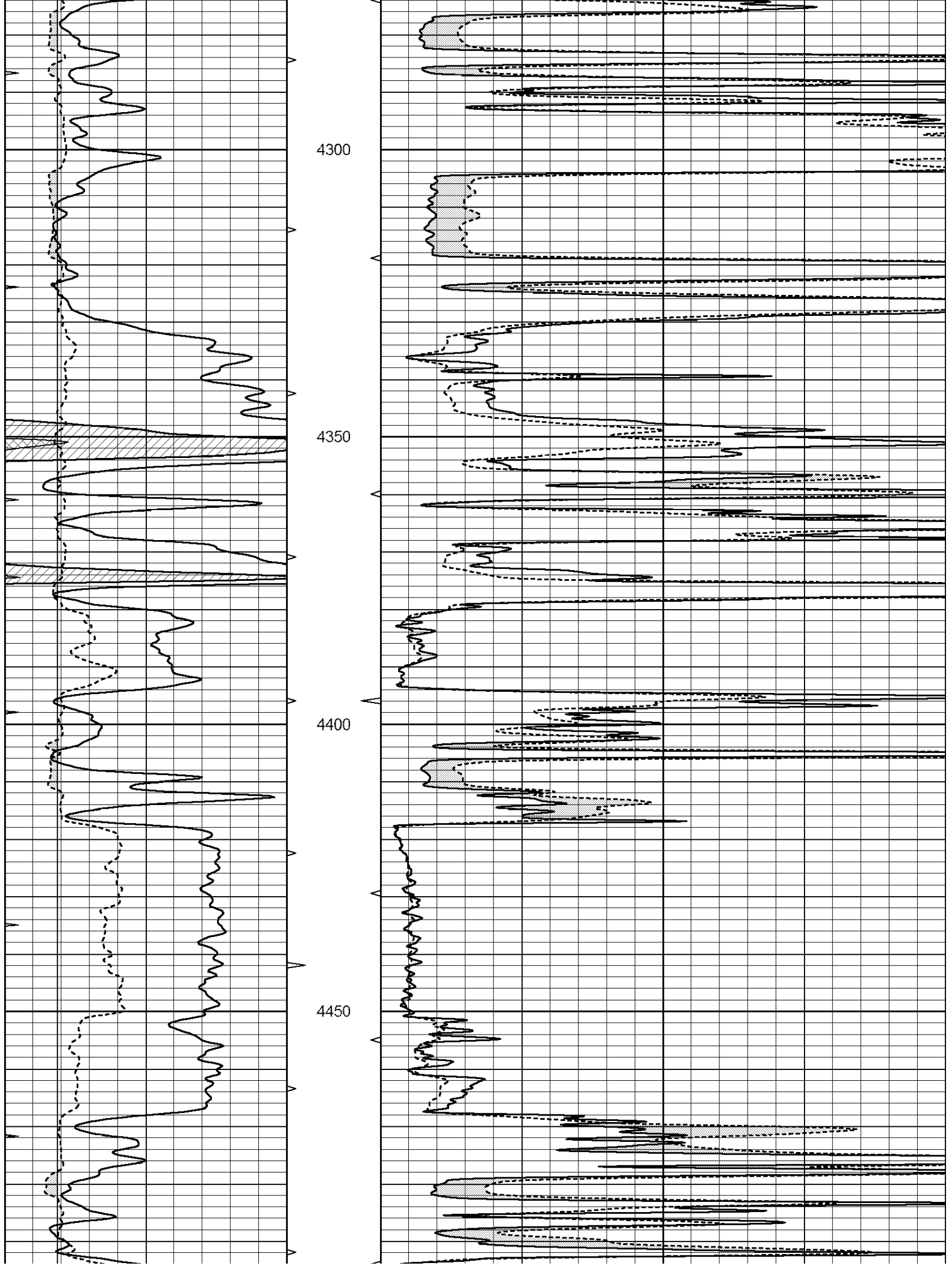
SUPERIOR
Hays,
Kansas

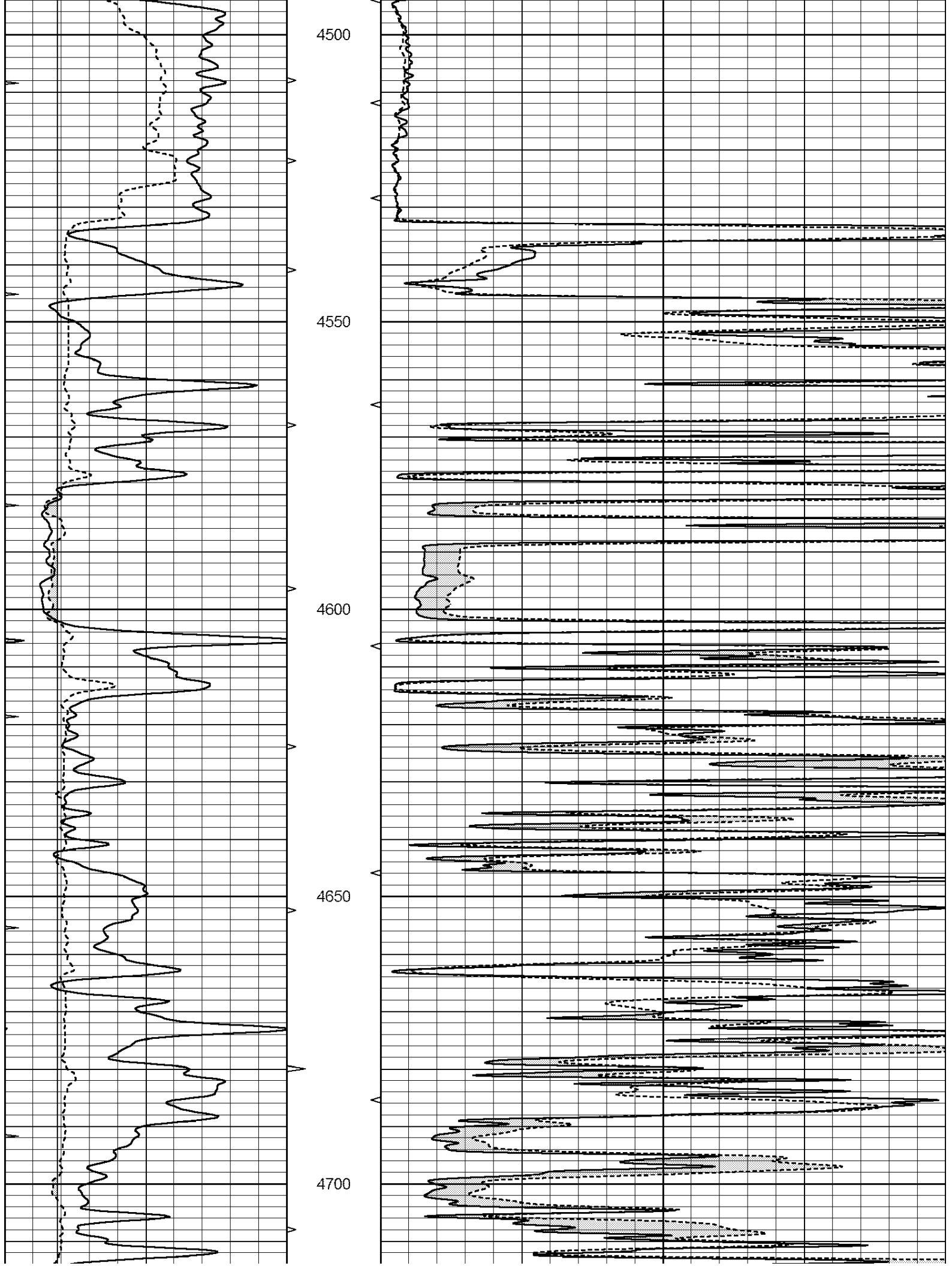
MAIN SECTION

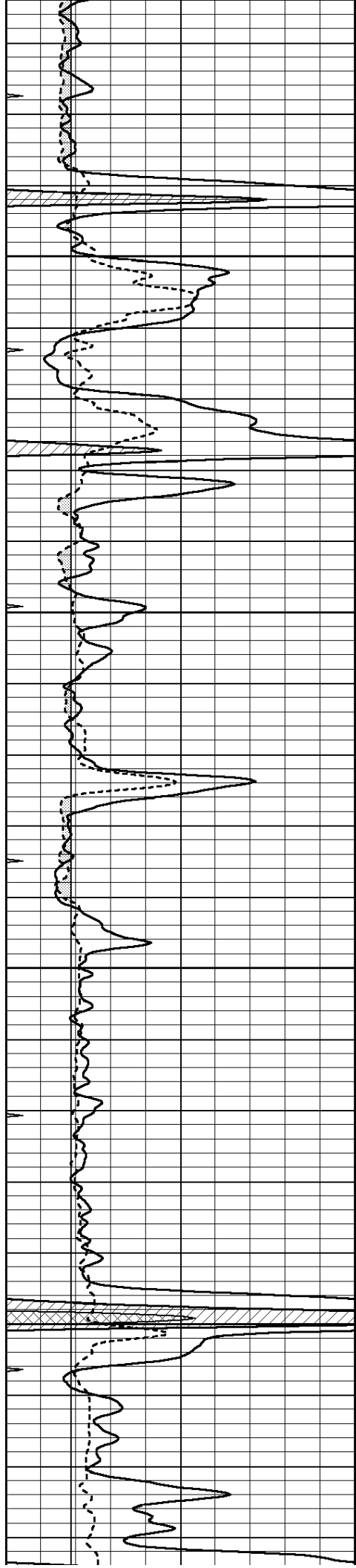
Database File: 408608pe.db
 Dataset Pathname: pass7.3
 Presentation Format: micro
 Dataset Creation: Sun Mar 18 13:45:21 2012
 Charted by: Depth in Feet scaled 1:240

0	GAMMA RAY (GAPI)	150	ABHV	0	MEL1.5 (Ohm-m)	40
6	CALIPER (in)	16	10 (ft3)	0	MEL2.0 (Ohm-m)	40
0	MINMK	20	TBHV			
			0 (ft3)	10		







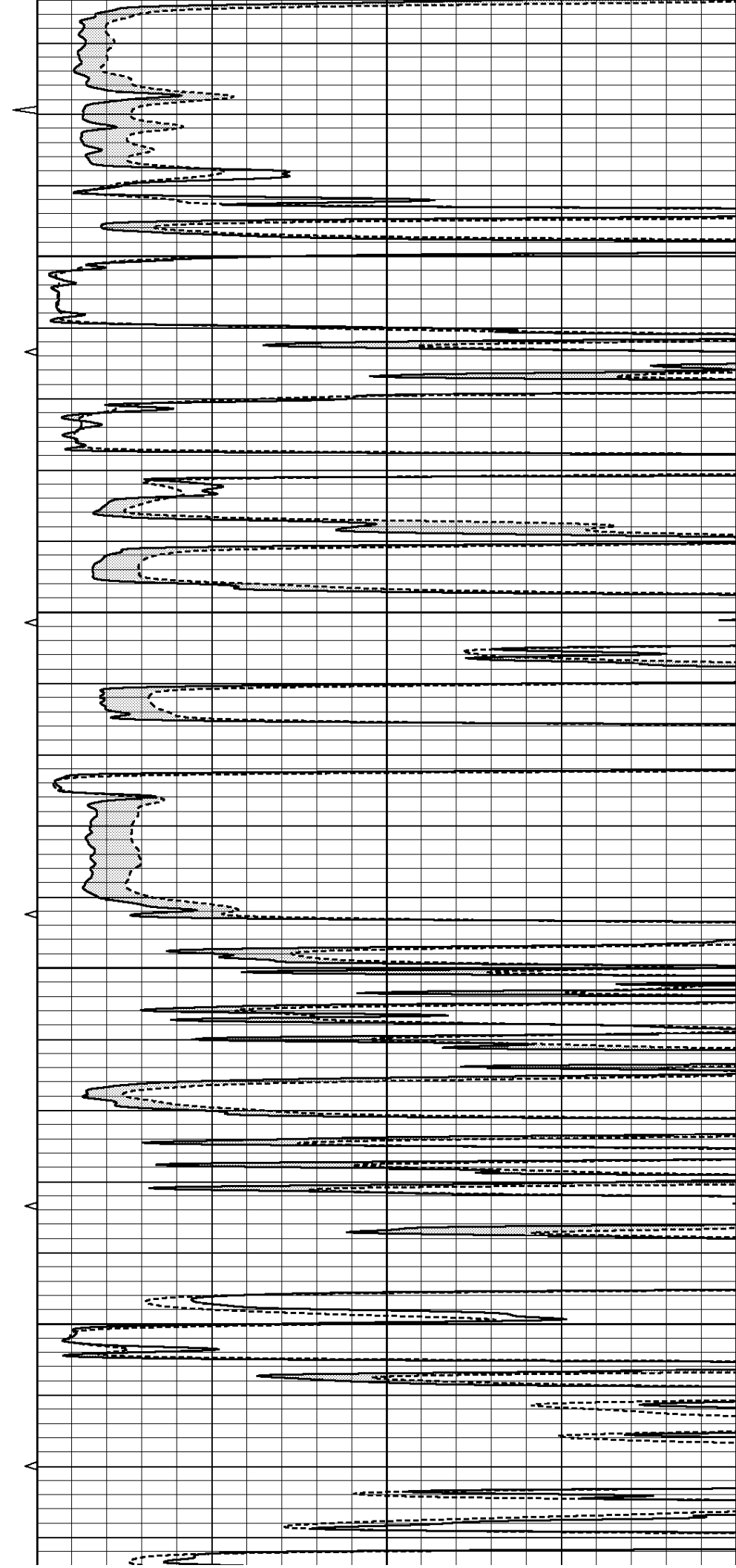


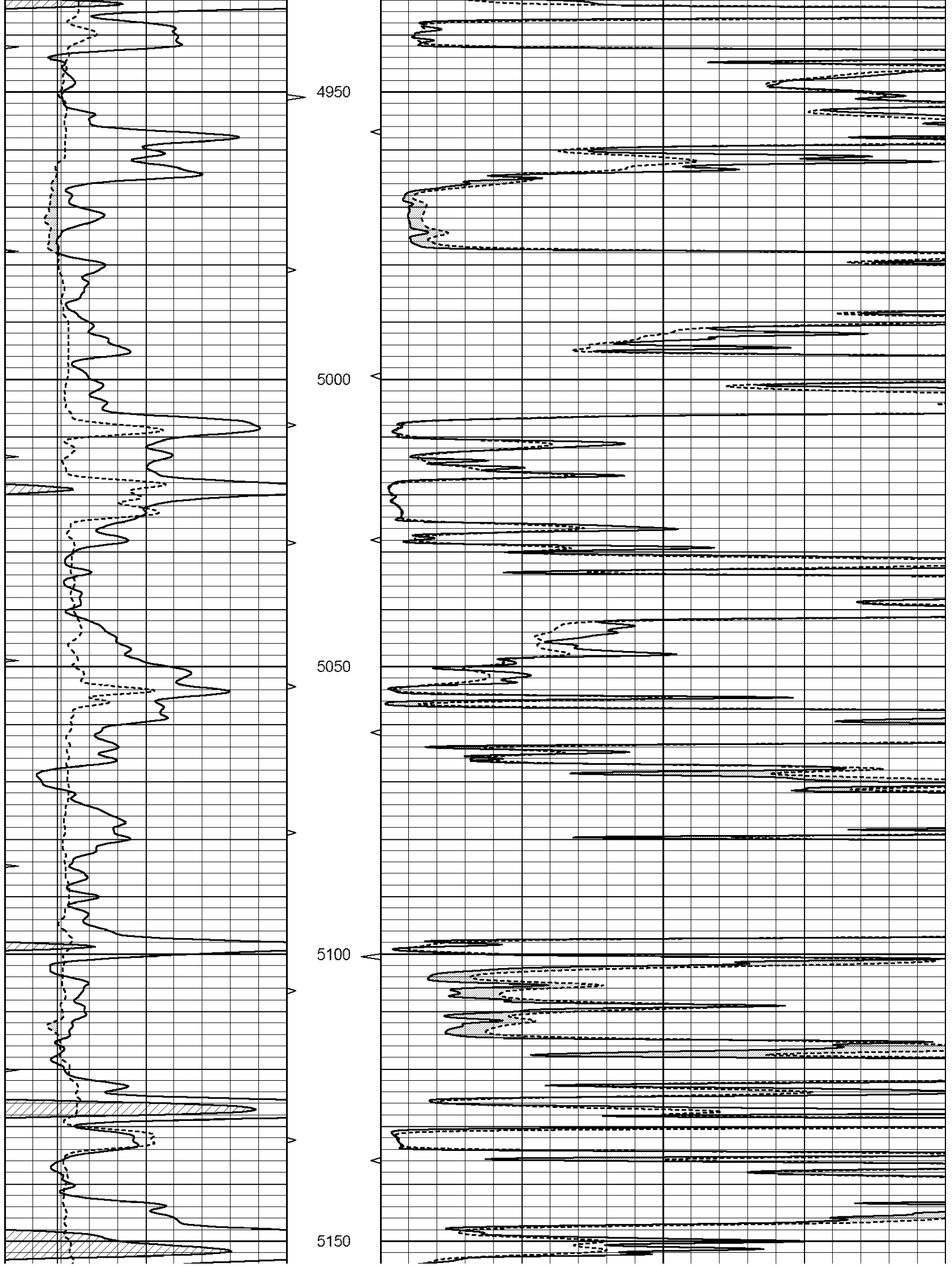
4750

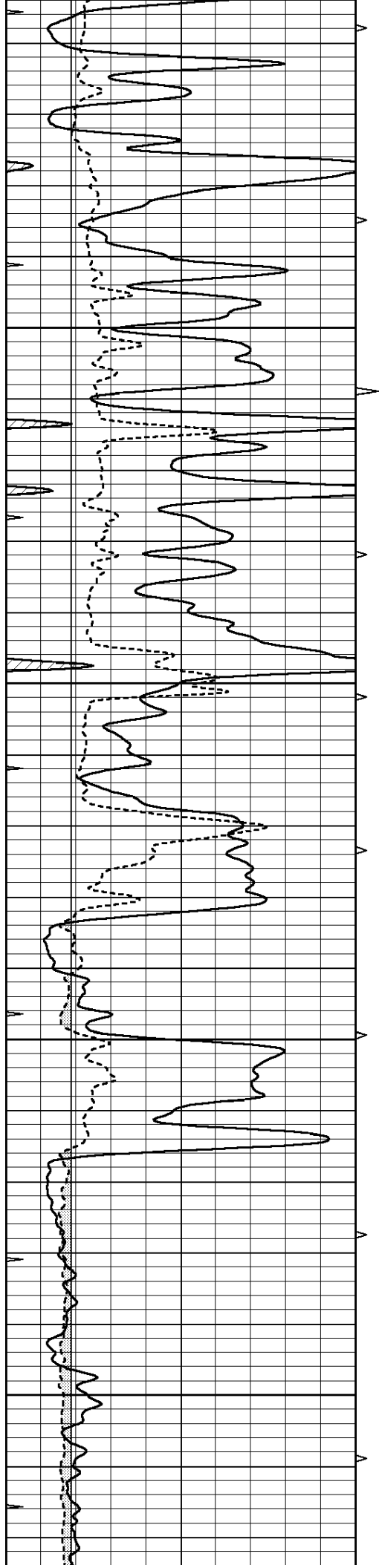
4800

4850

4900





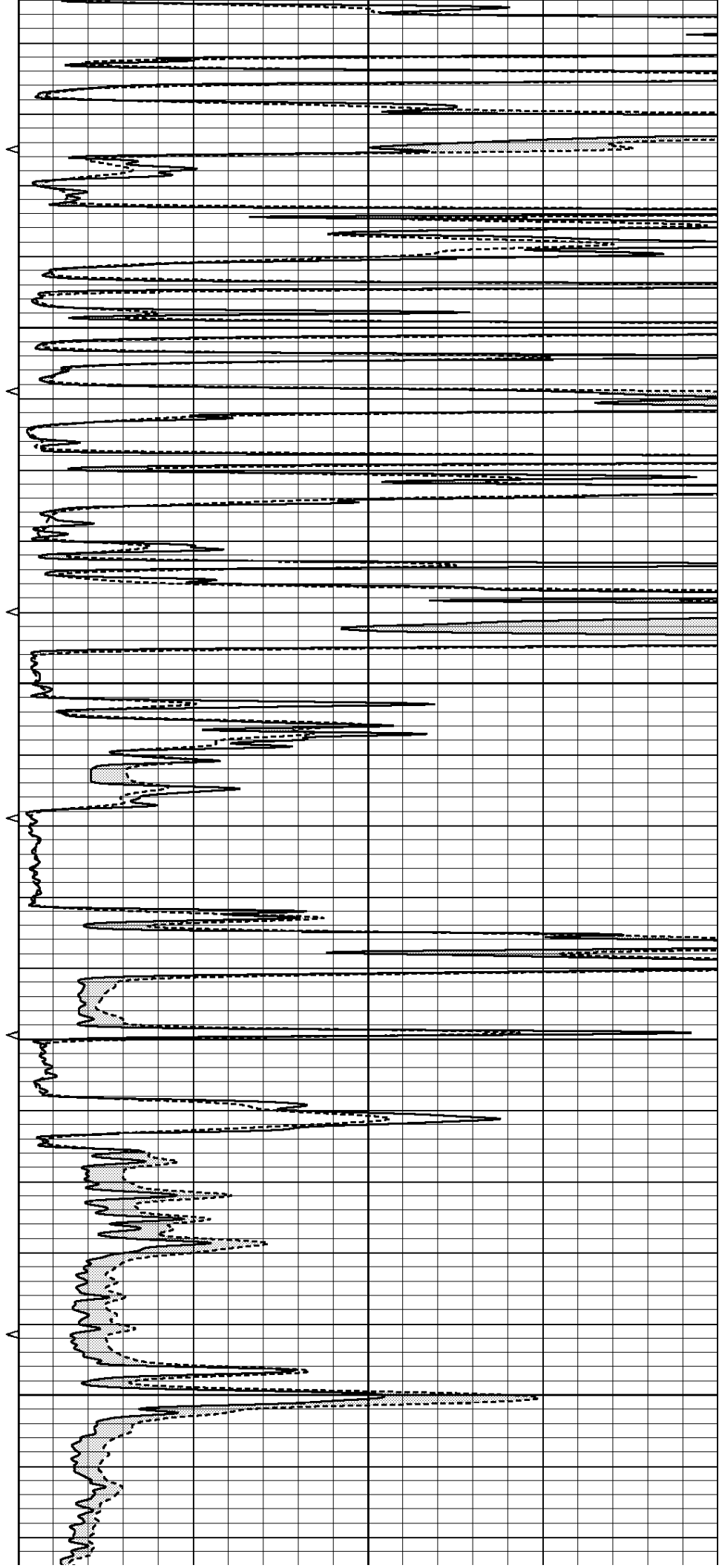


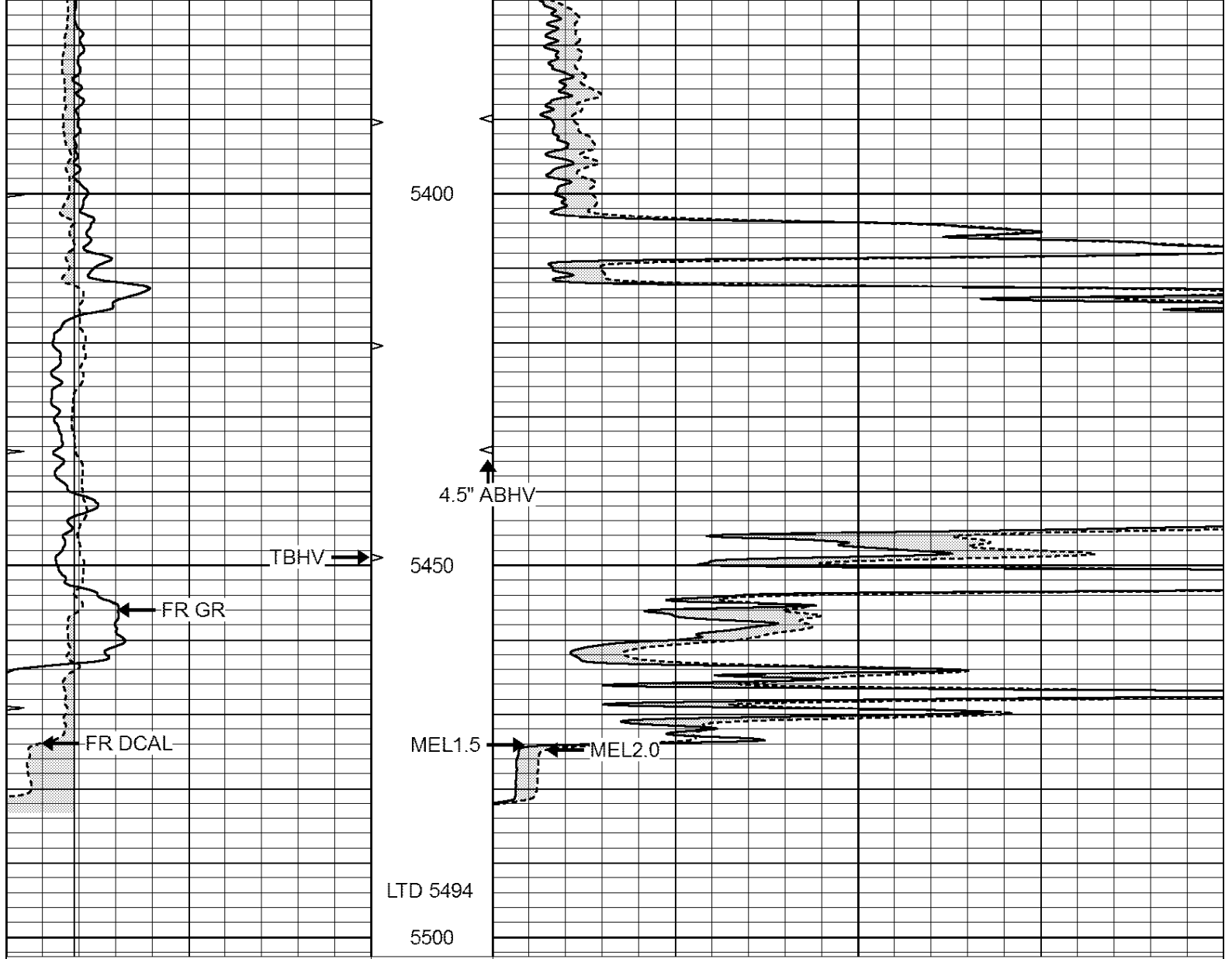
5200

5250

5300

5350





0	GAMMA RAY (GAPI)	150	ABHV	0	MEL1.5 (Ohm-m)	40
6	CALIPER (in)	16	10 (ft3)	0 0	MEL2.0 (Ohm-m)	40
0	MINMK	20	TBHV			
			0 (ft3)	10		



SUPERIOR
Hays,
Kansas

REPEAT SECTION

Database File: 408608pe.db
 Dataset Pathname: pass6.3
 Presentation Format: micro
 Dataset Creation: Sun Mar 18 13:02:25 2012 by Calc Open-Cased 110302
 Charted by: Depth in Feet scaled 1:240

0	GAMMA RAY (GAPI)	150	ABHV	0	MEL1.5 (Ohm-m)	40
6	CALIPER (in)	16	10 (ft3)	0 0	MEL2.0 (Ohm-m)	40
0	MINMK	20	TBHV			
			0 (ft3)	10		

