



SUPERIOR
Hays,
Kansas

COMPENSATED
DENSITY / NEUTRON
PE LOG

Company VINCENT OIL CORPORATION
Well CUER #1-28
Field ELC
County FORD
State KANSAS

Company VINCENT OIL CORPORATION
Well CUER #1-28
Field ELC
County FORD
State KANSAS

Location: API # : 15-057-20788-0000
330' FNL & 820' FWL
SEC 28 TWP 29S RGE 22W
Permanent Datum GROUND LEVEL Elevation 2453
Log Measured From KELLY BUSHING 13' A.G.L.
Drilling Measured From KELLY BUSHING
Other Services
DIL/MEL
SONIC
Elevation
K.B. 2466
D.F. 2464
G.L. 2453

Date	3/18/12		
Run Number	ONE		
Depth Driller	5497		
Depth Logger	5494		
Bottom Logged Interval	5470		
Top Log Interval	4100		
Casing Driller	8 5/8"@606'		
Casing Logger	602		
Bit Size	7 7/8"		
Type Fluid in Hole	CHEMICAL MUD	CHLORIDES 9,200 PPM	
Density / Viscosity	9.3/57		
pH / Fluid Loss	10.0/9.2		
Source of Sample	FLOWLINE		
Rm @ Meas. Temp	.480@72F		
Rmt @ Meas. Temp	.360@72F		
Rmc @ Meas. Temp	.576@72F		
Source of Rmf / Rmc	MEASUREMENT		
Rm @ BHT	266@130F		
Time Circulation Stopped	4 HOURS		
Time Logger on Bottom	9:30 A.M.		
Maximum Recorded Temperature	130F		
Equipment Number	4010		
Location	HAYS, KANSAS		
Recorded By	JEFF LUEBBERS		
Witnessed By	JIM HALL		

<<< Fold Here >>>

All interpretations are opinions based on inferences from electrical or other measurements and we cannot and do not guarantee the accuracy or correctness of any interpretation, and we shall not, except in the case of gross or willful negligence on our part, be liable or responsible for any loss, costs, damages, or expenses incurred or sustained by anyone resulting from any interpretation made by any of our officers, agents or employees. These interpretations are also subject to our general terms and conditions set out in our current Price Schedule.

Comments

THANK YOU FOR USING SUPERIOR WELL SERVICE HAYS, KANSAS (785) 628-6395
DIRECTIONS
KINGSDOWN, KS. (HWY 54 & RD. 125) 2S. ON "RD. 125", 2E., S. INTO

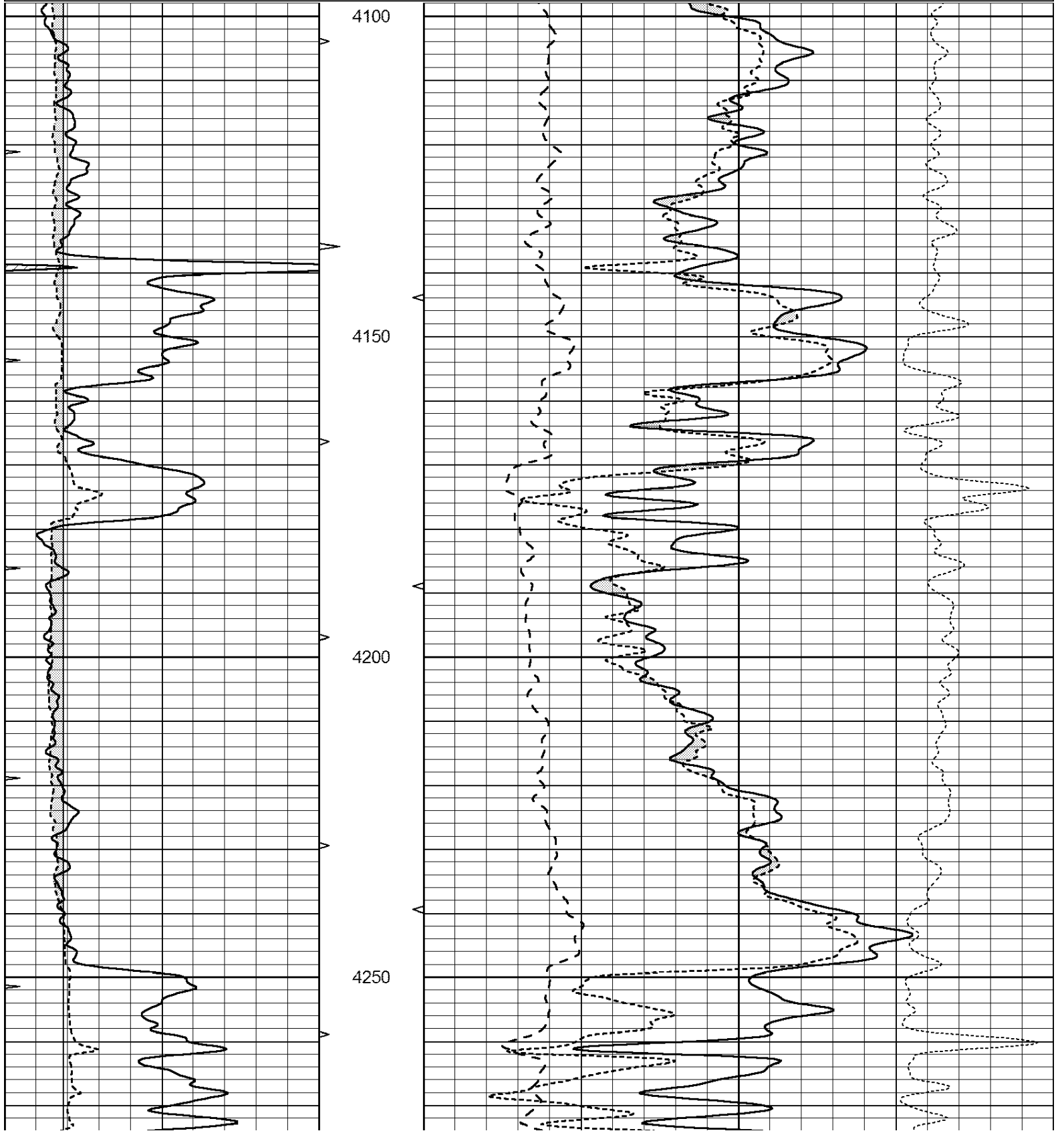


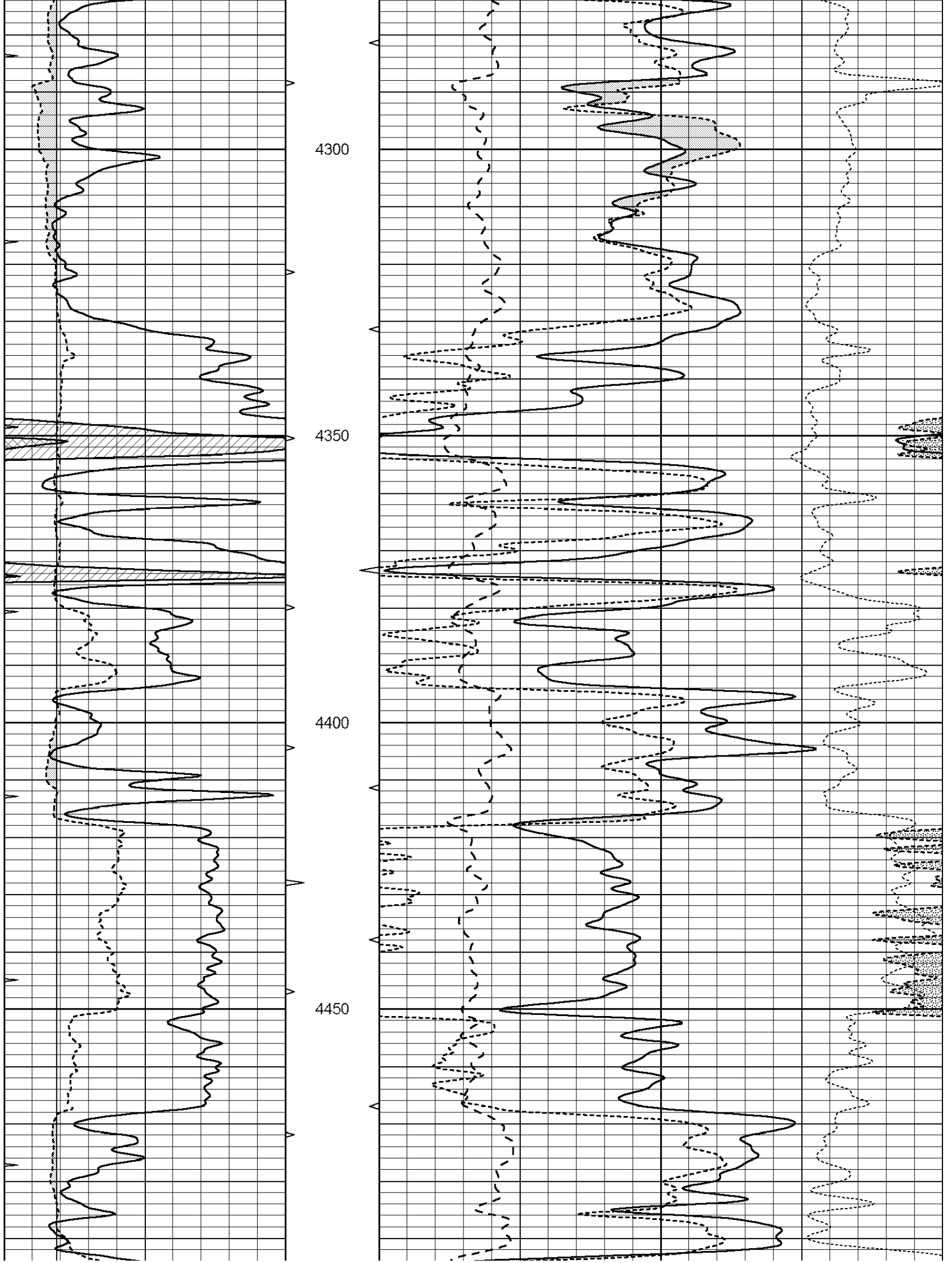
SUPERIOR
Hays,
Kansas

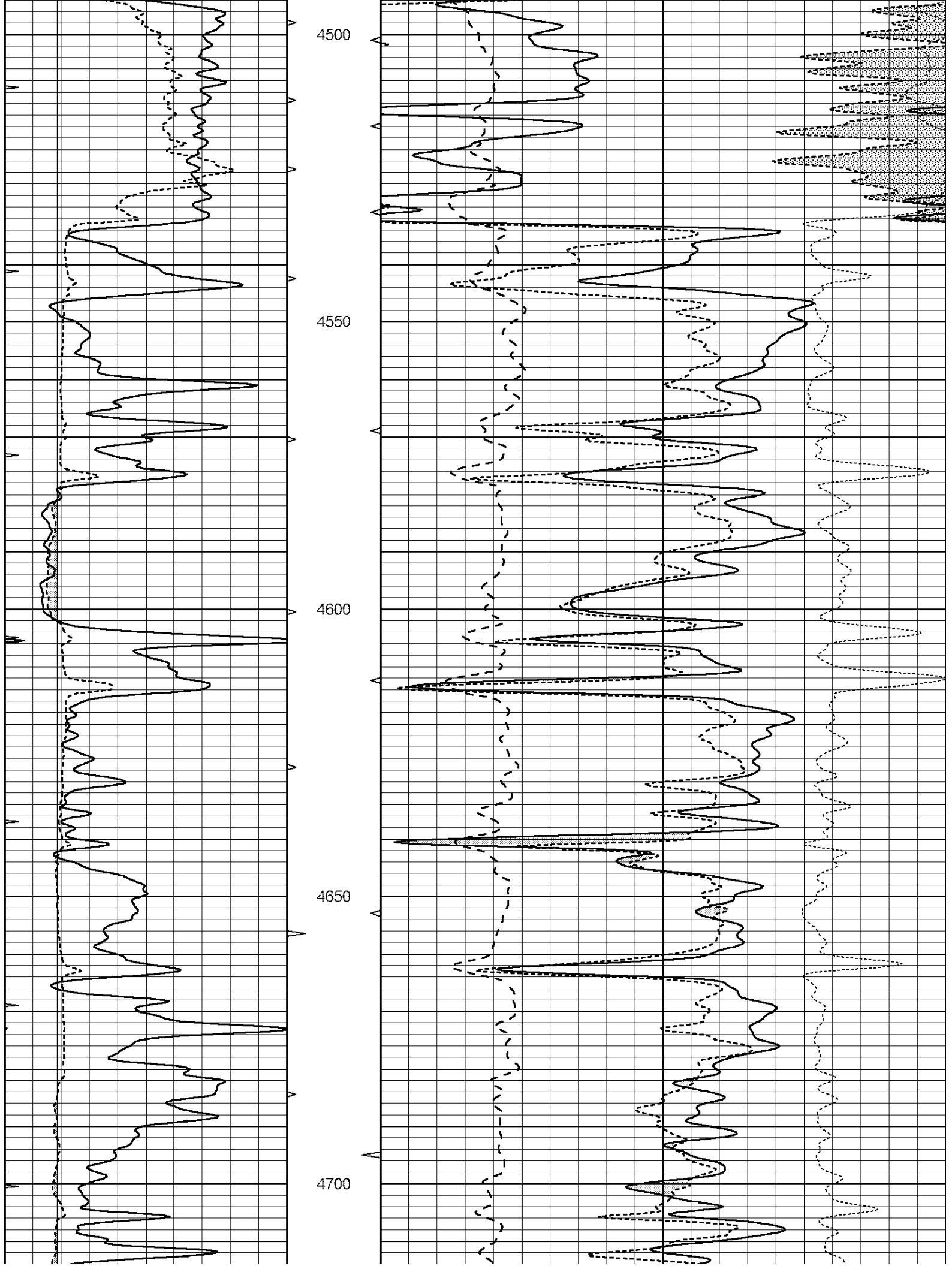
MAIN SECTION

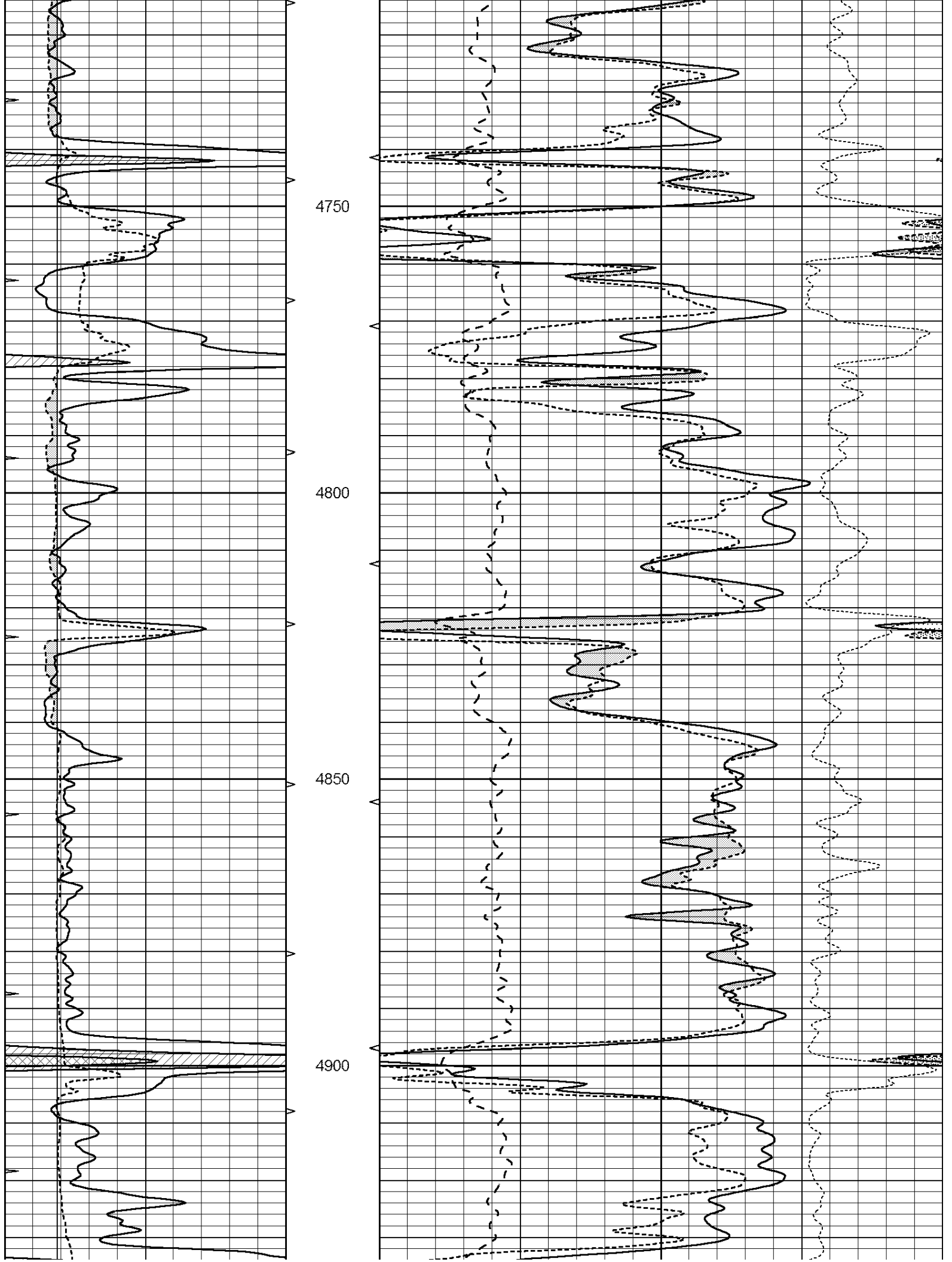
Database File: 408608pe.db
 Dataset Pathname: pass3.7
 Presentation Format: ldt_neu
 Dataset Creation: Sun Mar 18 11:50:27 2012
 Charted by: Depth in Feet scaled 1:240

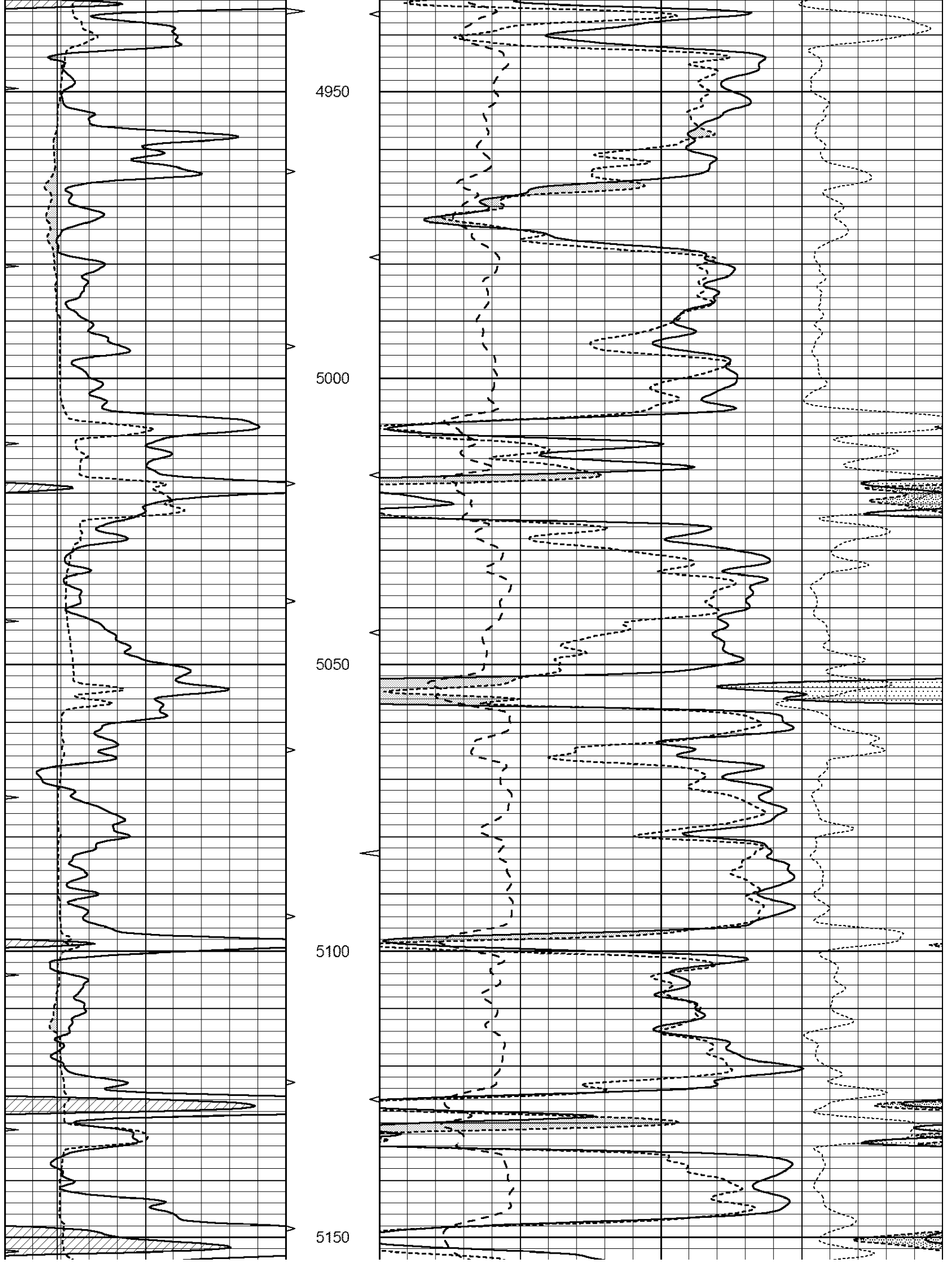
0	GAMMA RAY (GAPI)	150	ABHV	30	COMPENSATED DENSITY (pu)	-10			
6	CALIPER (in)	16	10 (ft3)	0	30	COMPENSATED NEUTRON (pu)	-10		
0	MINMK	20	TBHV	0	PE	10	-0.25	CORRECTION (g/cc)	0.25
			0 (ft3)	10					

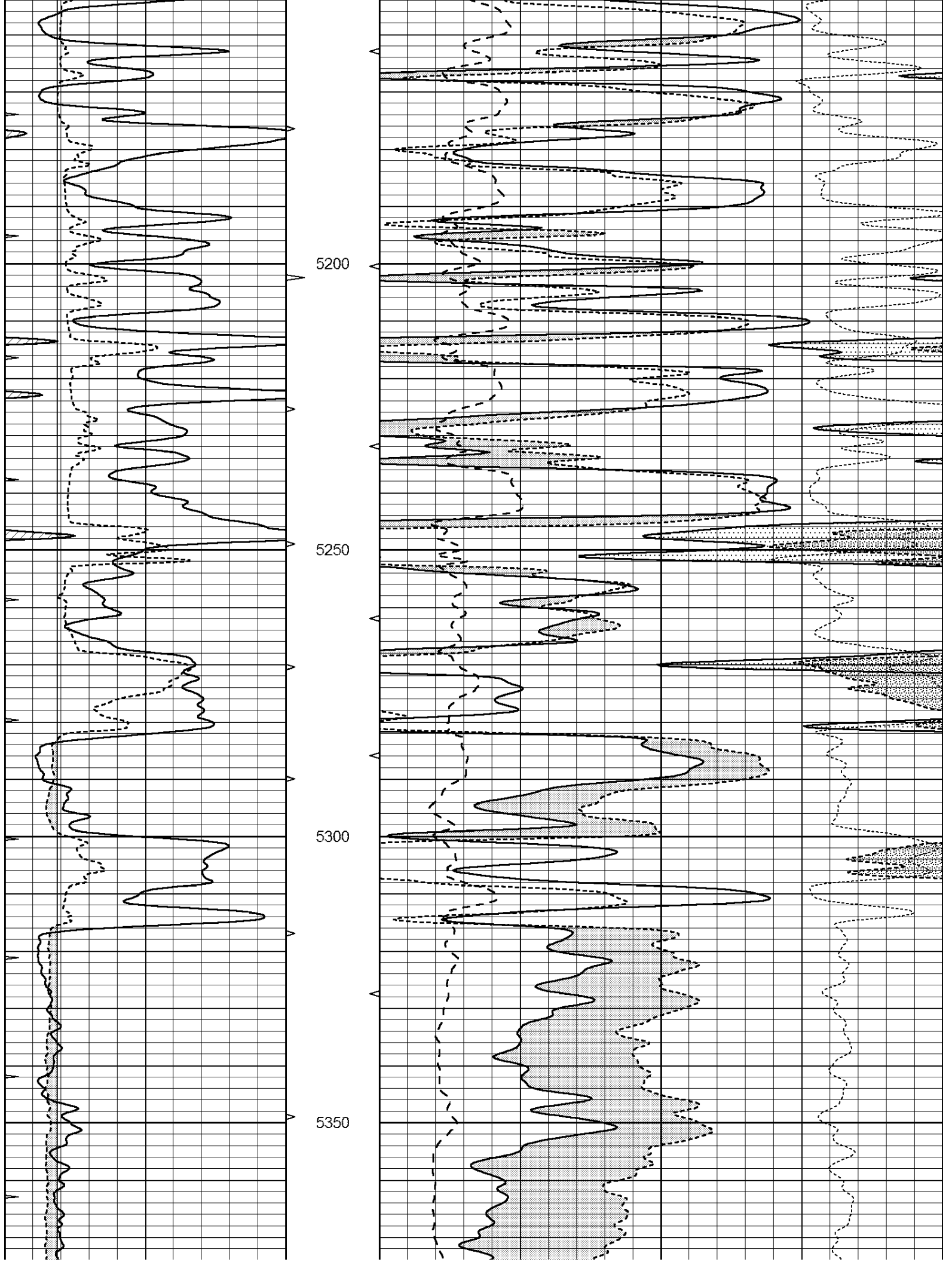


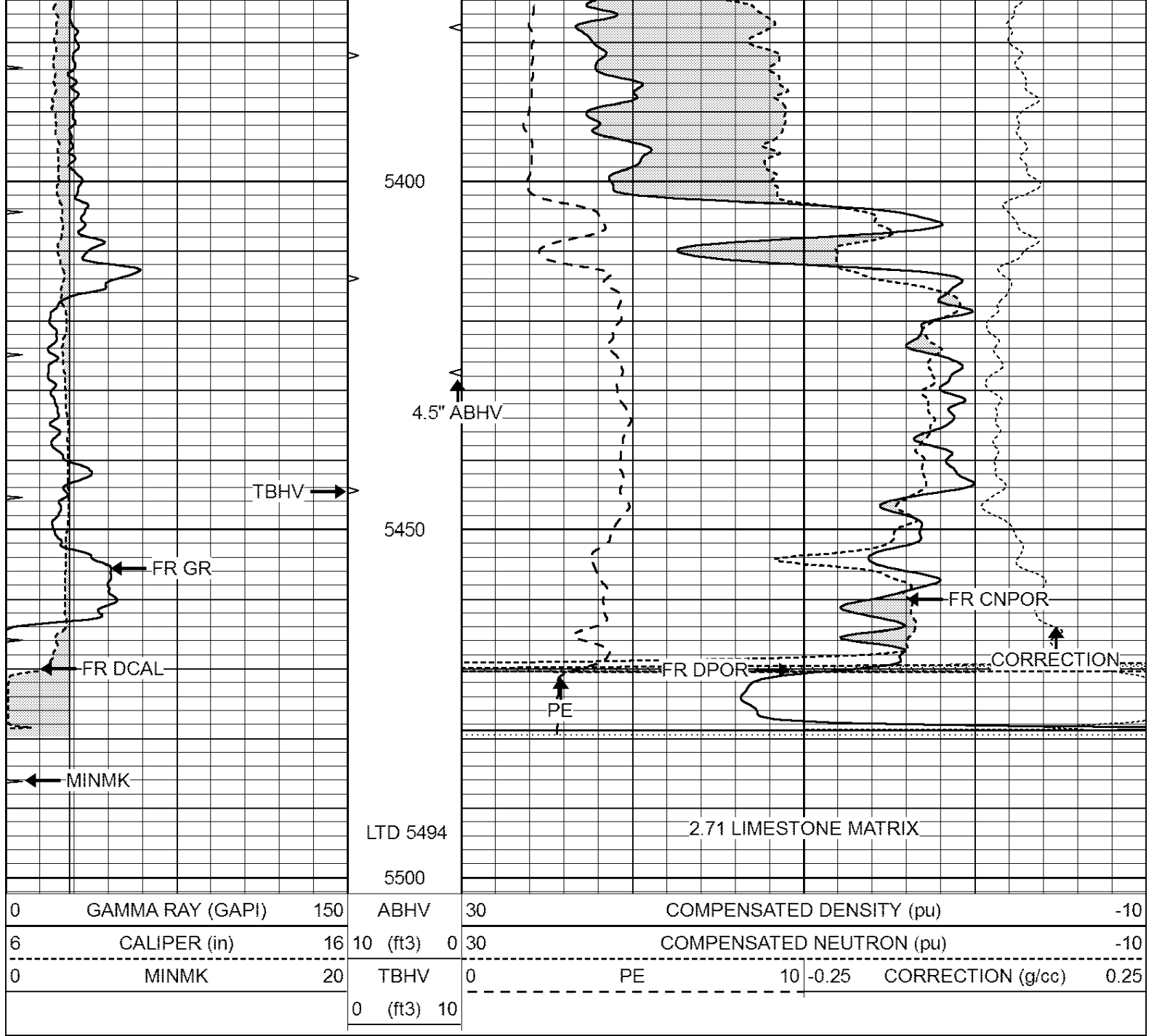










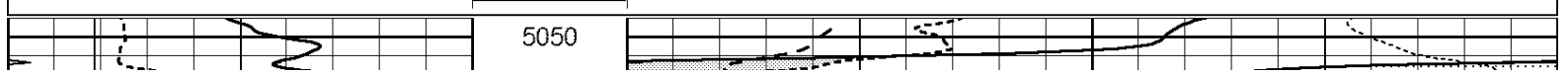


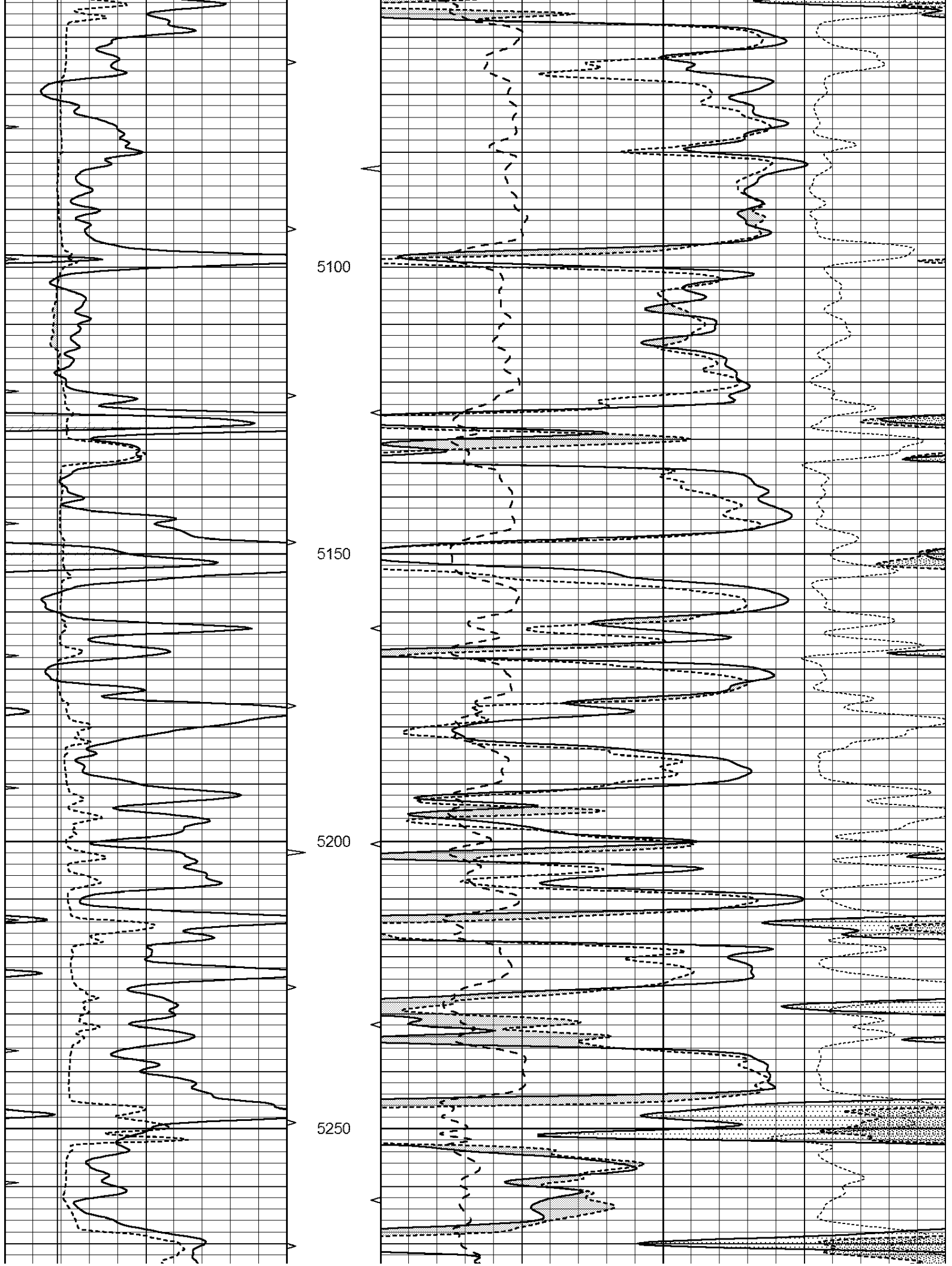
SUPERIOR
Hays,
Kansas

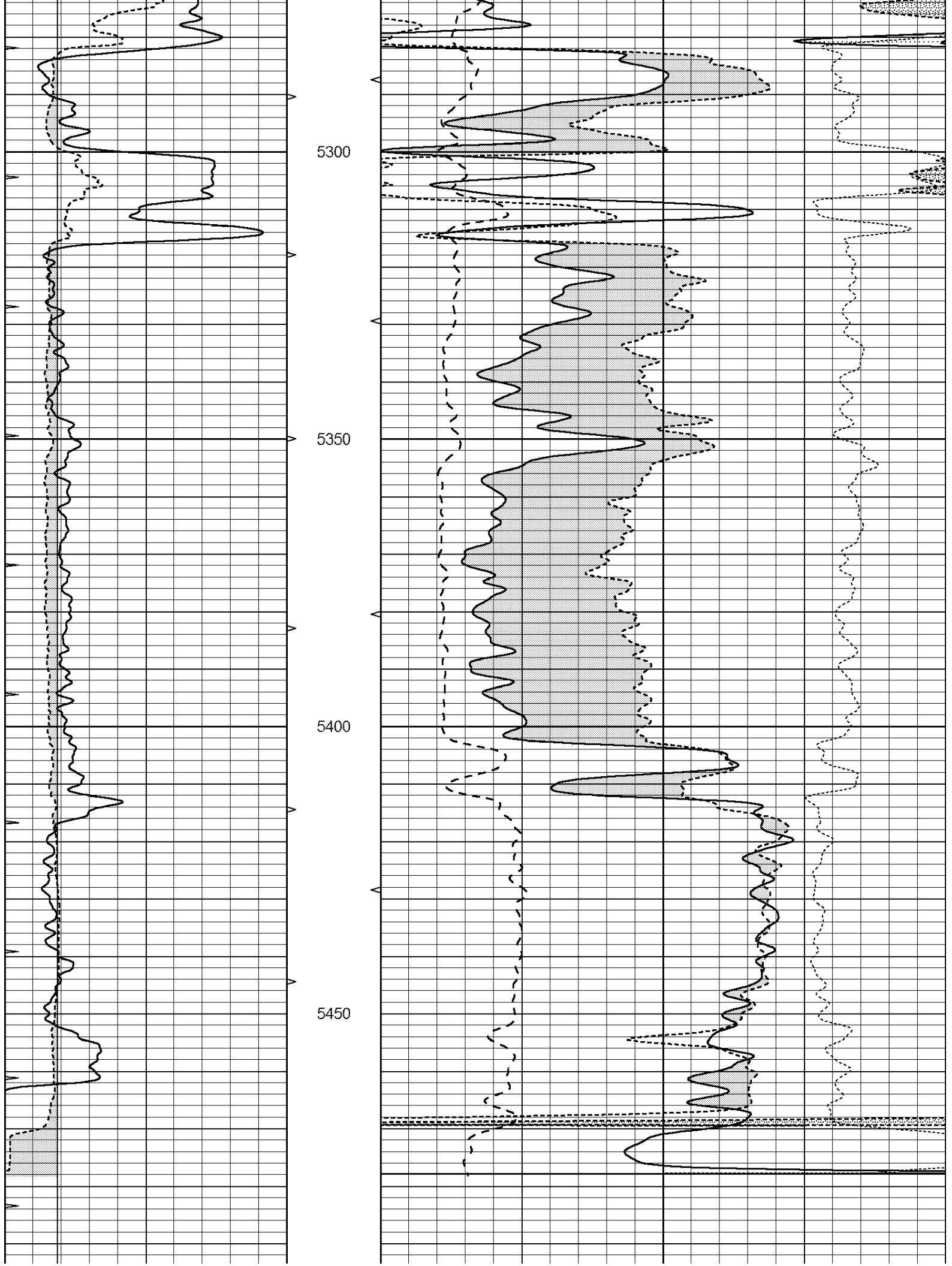
REPEAT SECTION

Database File: 408608pe.db
 Dataset Pathname: pass2.5
 Presentation Format: ldt_neu
 Dataset Creation: Sun Mar 18 10:19:25 2012
 Charted by: Depth in Feet scaled 1:240

0	GAMMA RAY (GAPI)	150	ABHV	30	COMPENSATED DENSITY (pu)	-10
6	CALIPER (in)	16	10 (ft3)	0 30	COMPENSATED NEUTRON (pu)	-10
0	MINMK	20	TBHV	0	PE	10 -0.25 CORRECTION (g/cc) 0.25
			0 (ft3)	10		







Short Space
Long Space

cps
cps

pu

pu

POST-SURVEY VERIFICATION

Detector

Readings

Measured

Target

Short Space
Long Space

cps
cps

pu

pu

Gamma Ray Calibration Report

Serial Number:

070559

Tool Model:

OPEN_GR

Performed:

Wed Mar 14 16:09:52 2012

Calibrator Value:

1.0

GAPI

Background Reading:

0.0

cps

Calibrator Reading:

1.0

cps

Sensitivity:

0.3000

GAPI/cps