



DIGITAL LOG

(785) 625-3858

Dual Compensated
Porosity Log

15-179-21298-0-00

API No.

Company Culbreath Oil & Gas Company, Inc.
Well Coburn #2-8
Field Wildcat
County Sheridan State Kansas

Location E/2 NW
1320' FNL / 1950' FWL

Sec: 8 Twp: 10S Rge: 26W

Other Services
DIL
MEL / BHCS

Permanent Datum Ground Level Elevation 2612
Log Measured From Kelly Bushing 9 Ft. Above Perm. Datum
Drilling Measured From Kelly Bushing

K.B. 2621
D.F.
G.L. 2612

Date	4/17/2012	
Run Number	One	
Type Log	CNL / CDL	
Depth Driller	4110	
Depth Logger	4110	
Bottom Logged Interval	4089	
Top Logged Interval	3400	
Type Fluid In Hole	Chemical	
Salinity, PPM CL	3200	
Density	9.1	
Level	Full	
Max. Rec. Temp. F	117	
Operating Rig Time	5 Hours	
Equipment -- Location	15 Hays	
Recorded By	R. Barnhart	
Witnessed By	Tim Priest	

Borehole Record

Casing Record

Run No.	Bit	From	To	Size	Wgt.	From	To
1	12.25	00	253	8.625	24#	0	253
2	7.875	253	4110				

<<< Fold Here >>>

All interpretations are opinions based on inferences from electrical or other measurements and we cannot and do not guarantee the accuracy or correctness of any interpretation, and we shall not, except in the case of gross or willful negligence on our part, be liable or responsible for any loss, costs, damages, or expenses incurred or sustained by anyone resulting from any interpretation made by any of our officers, agents or employees. These interpretations are also subject to our general terms and conditions set out in our current Price Schedule.

Comments

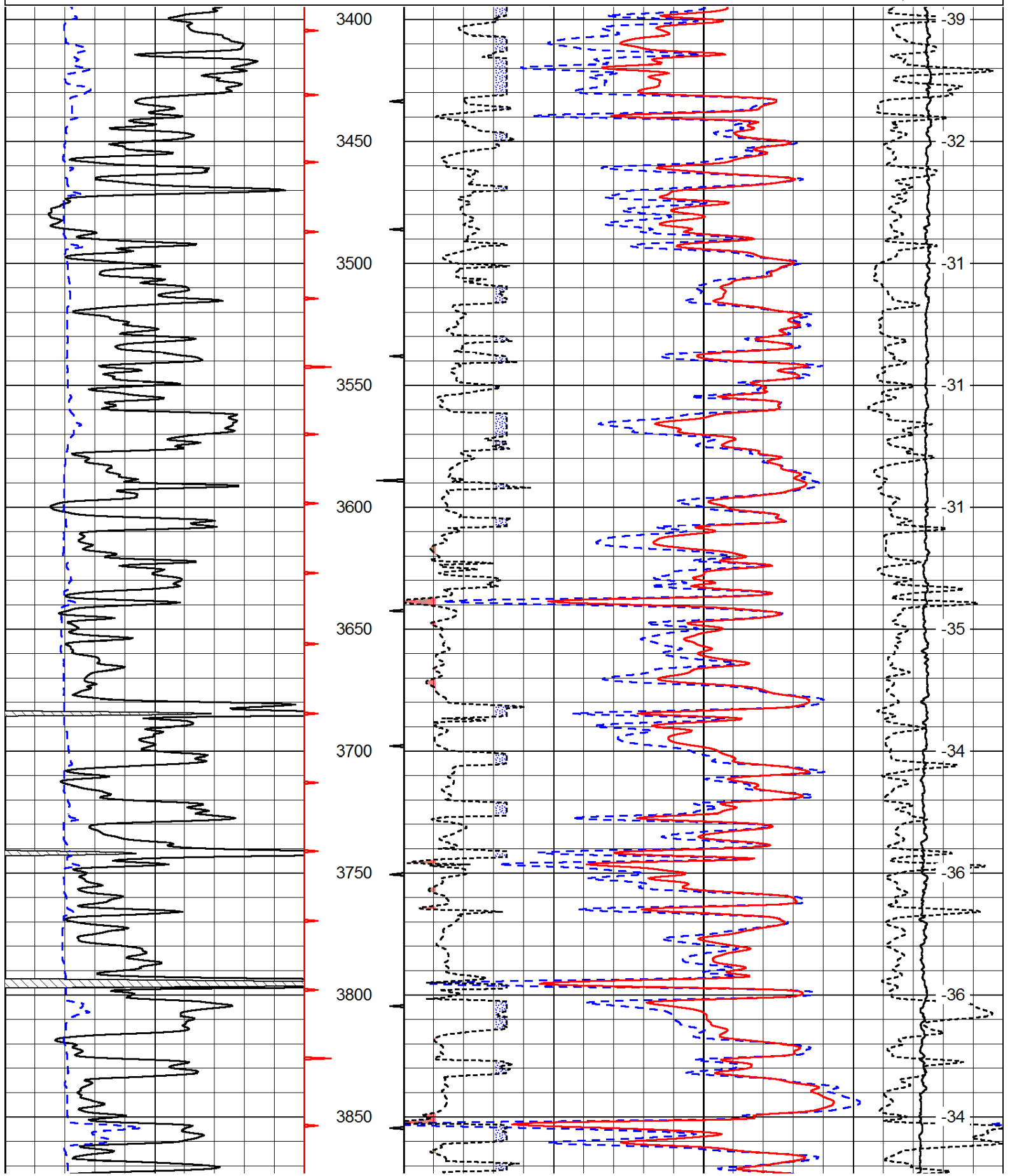
Thank you for using Log-Tech, Inc.
(785) 625-3858

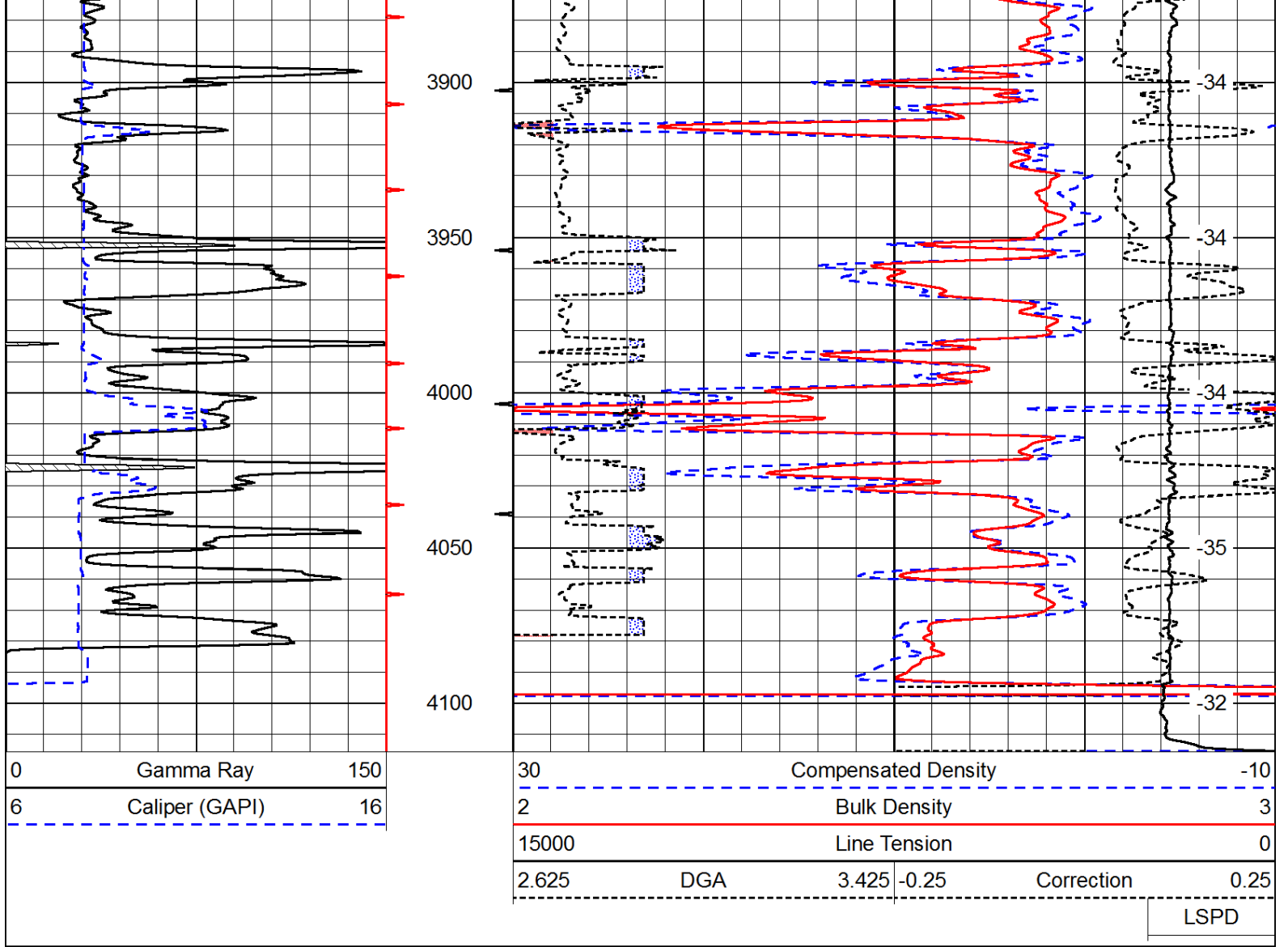
Quinter, KS:
Exit 107, 8N, 1W
2N, SE into

Database File: c:\warrior\data\culbreath_coburn #2-8\culbreathhd.db
Dataset Pathname: dil\culmain
Presentation Format: cdl
Dataset Creation: Tue Apr 17 13:57:06 2012
Charted by: Depth in Feet scaled 1:600

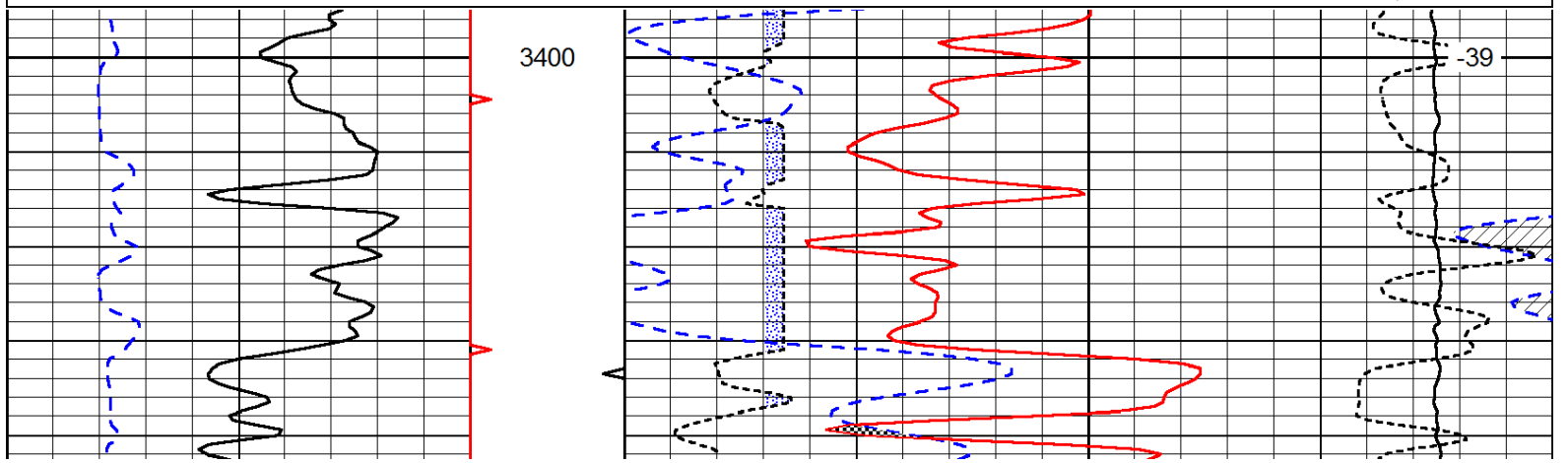
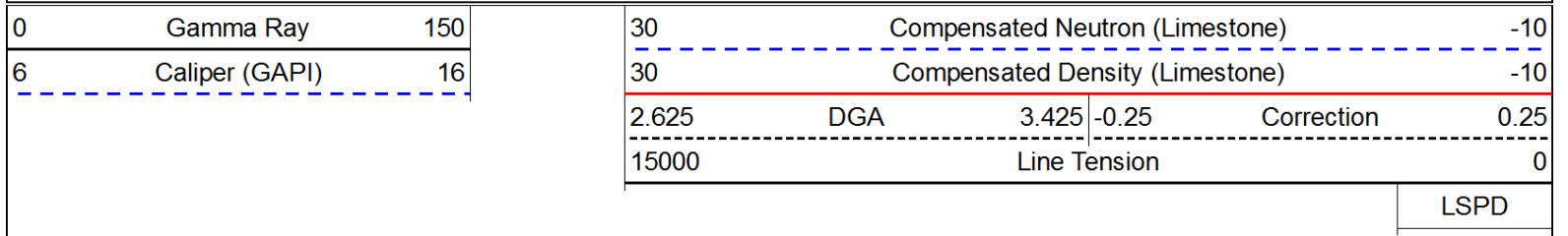
0	Gamma Ray	150
6	Caliper (GAPI)	16

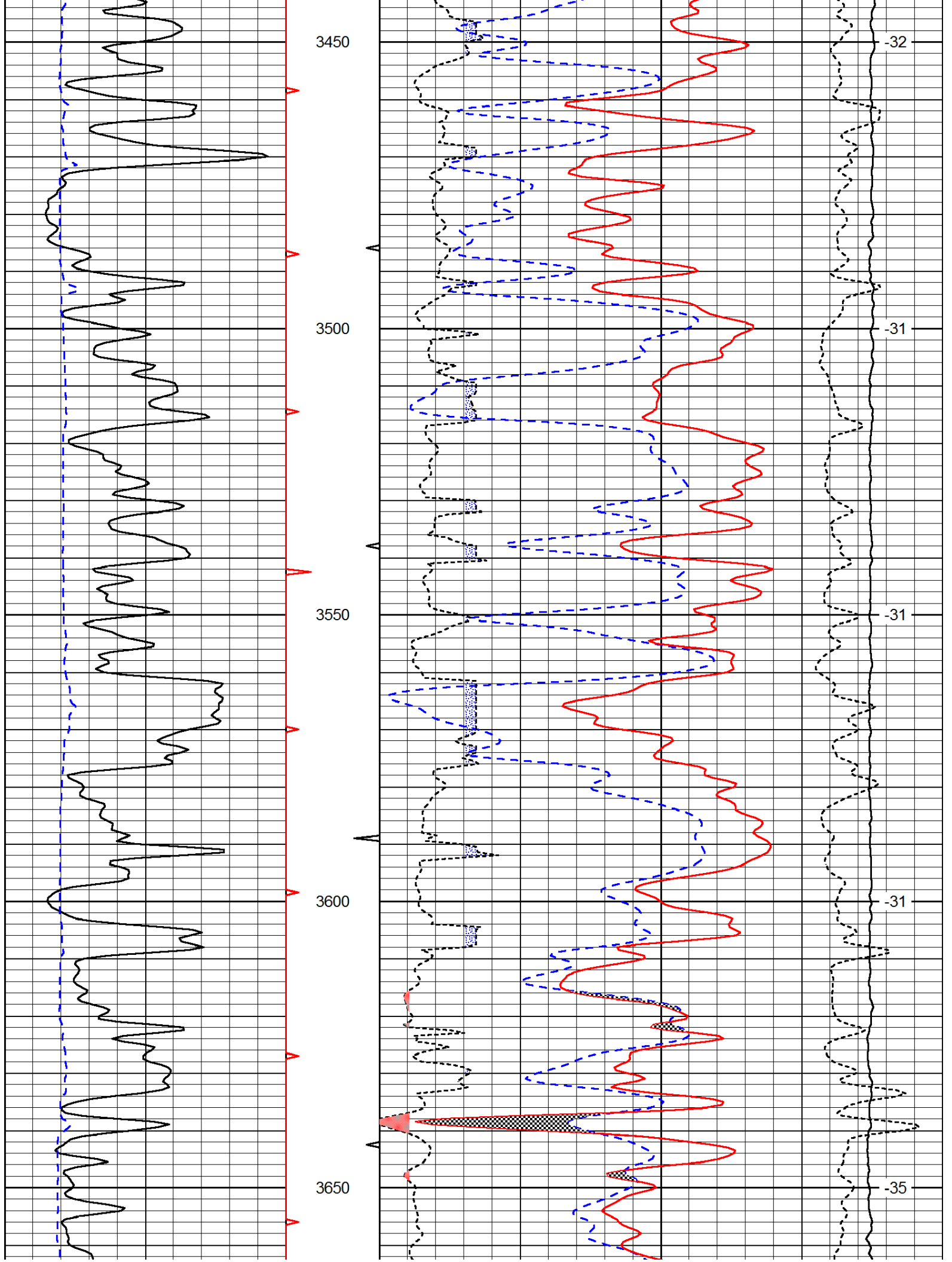
30	Compensated Density		-10
2	Bulk Density		3
15000	Line Tension		0
2.625	DGA	3.425	-0.25
Correction			0.25
LSPD			

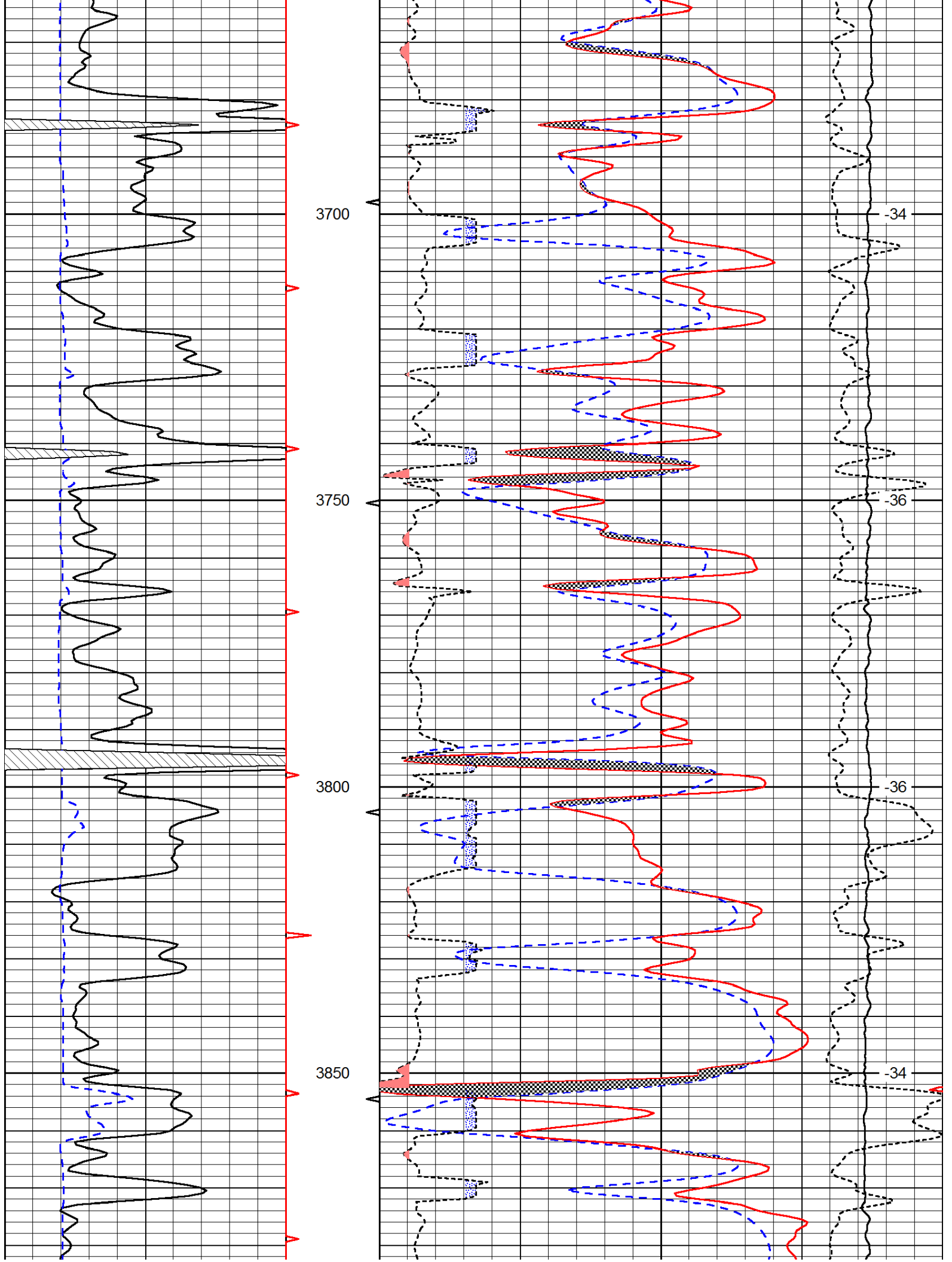


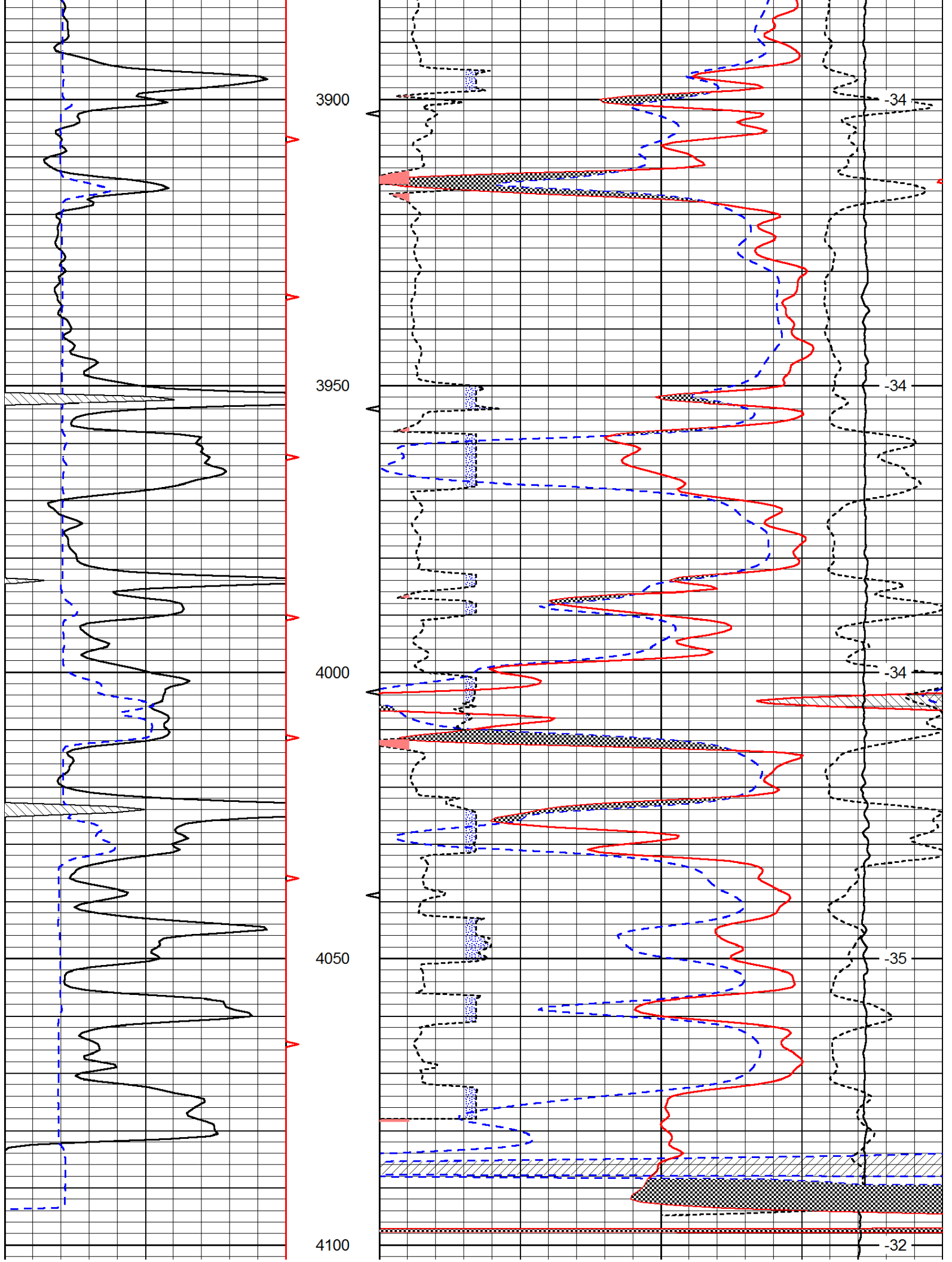


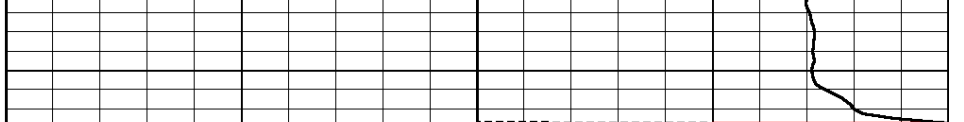
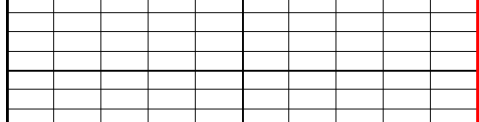
Database File: c:\warrior\data\culbreath_coburn #2-8\culbreathhd.db
 Dataset Pathname: dil/culmain
 Presentation Format: cndlspec
 Dataset Creation: Tue Apr 17 13:57:06 2012
 Charted by: Depth in Feet scaled 1:240











0	Gamma Ray	150
6	Caliper (GAPI)	16

30	Compensated Neutron (Limestone)	-10
30	Compensated Density (Limestone)	-10

2.625	DGA	3.425	-0.25	Correction	0.25
15000	Line Tension				0

LSPD