



DIGITAL LOG (785) 625-3858

Microresistivity
Log

15-179-21298-0-00

API No.

Company Culbreath Oil & Gas Company, Inc.
Well Coburn #2-8
Field Wildcat
County Sheridan State Kansas

Location E/2 NW
1320' FNL / 1950' FWL

Sec: 8 Twp: 10S Rge: 26W

Other Services
CNL / CDL
DIL / BHCS

Permanent Datum Ground Level
Log Measured From Kelly Bushing 9 Ft. Above Perm. Datum
Drilling Measured From Kelly Bushing

Elevation
K.B. 2621
D.F.
G.L. 2612

Date	4/17/2012	
Run Number	Two	
Depth Driller	4110	
Depth Logger	4110	
Bottom Logged Interval	4109	
Top Log Interval	3400	
Casing Driller	8.625 @ 253	
Casing Logger	262	
Bit Size	7.875	
Type Fluid in Hole	Chemical	
Salinity, ppm CL	3200	
Density / Viscosity	9.1 55	
pH / Fluid Loss	10.5 7.2	
Source of Sample	Flowline	
Rm @ Meas. Temp	0.60 @ 68	
Rmf @ Meas. Temp	0.45 @ 68	
Rmc @ Meas. Temp	0.81 @ 68	
Source of Rmf / Rmc	Charts	
Rm @ BHT	0.35 @ 117	
Operating Rig Time	5 Hours	
Max Rec. Temp. F	117	
Equipment Number	15	
Location	Hays	
Recorded By	R. Barnhart	
Witnessed By	Tim Priest	

<<< Fold Here >>>

All interpretations are opinions based on inferences from electrical or other measurements and we cannot and do not guarantee the accuracy or correctness of any interpretation, and we shall not, except in the case of gross or willful negligence on our part, be liable or responsible for any loss, costs, damages, or expenses incurred or sustained by anyone resulting from any interpretation made by any of our officers, agents or employees. These interpretations are also subject to our general terms and conditions set out in our current Price Schedule.

Comments

Thank you for using Log-Tech, Inc.
(785) 625-3858

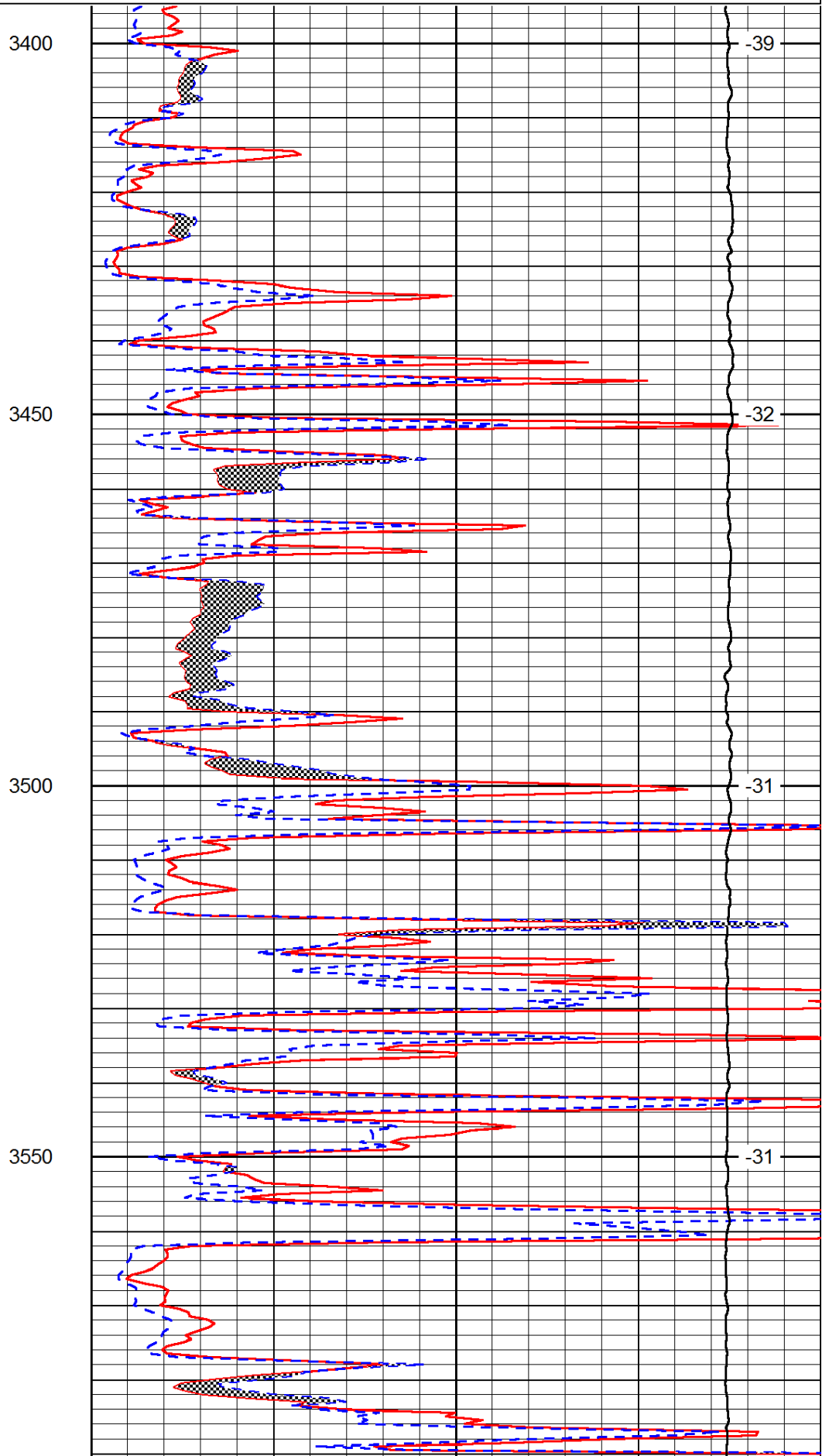
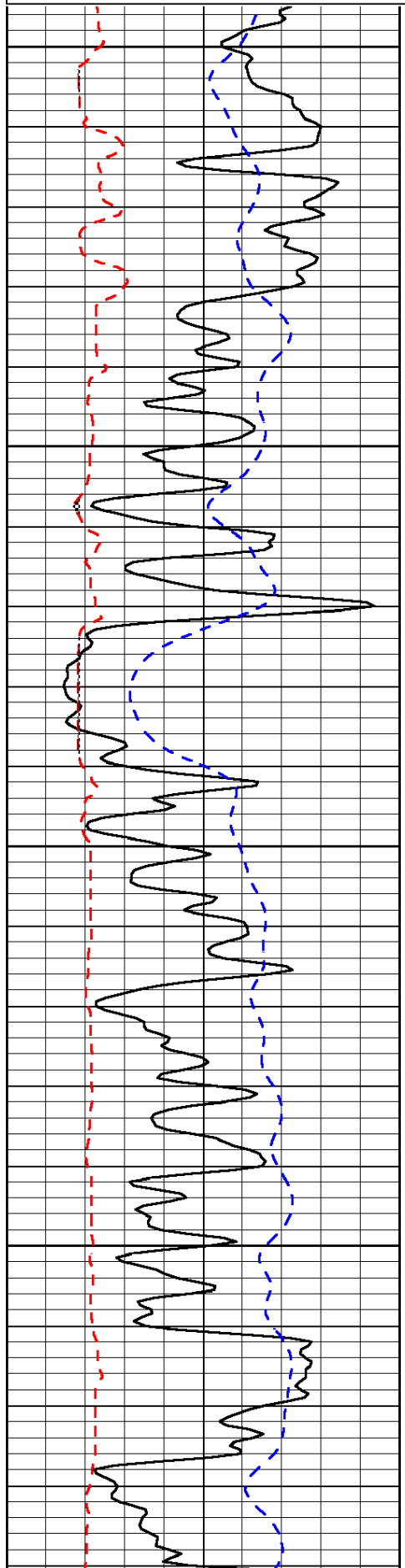
Quinter, KS:
Exit 107, 8N, 1W
2N, SE into

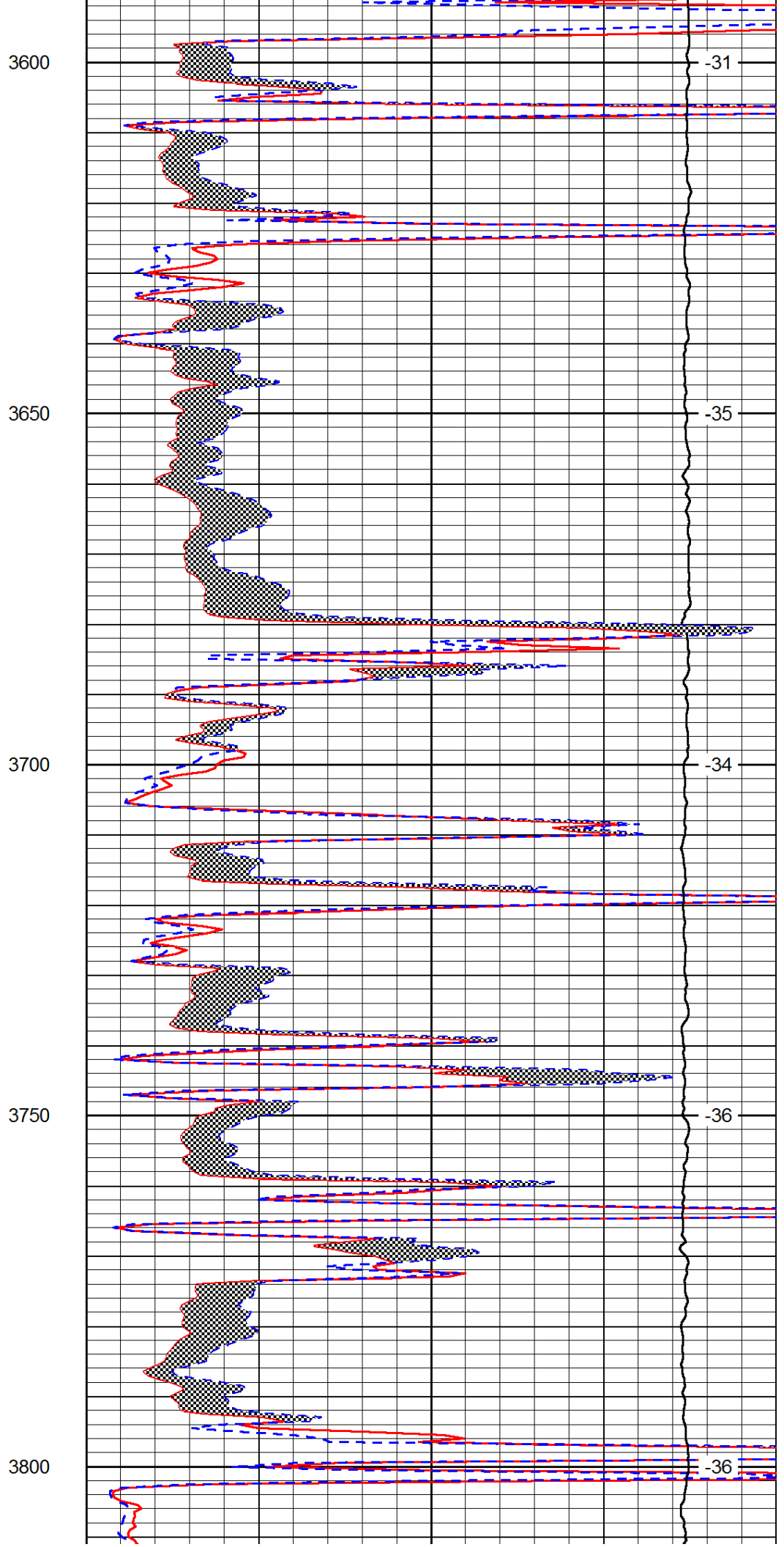
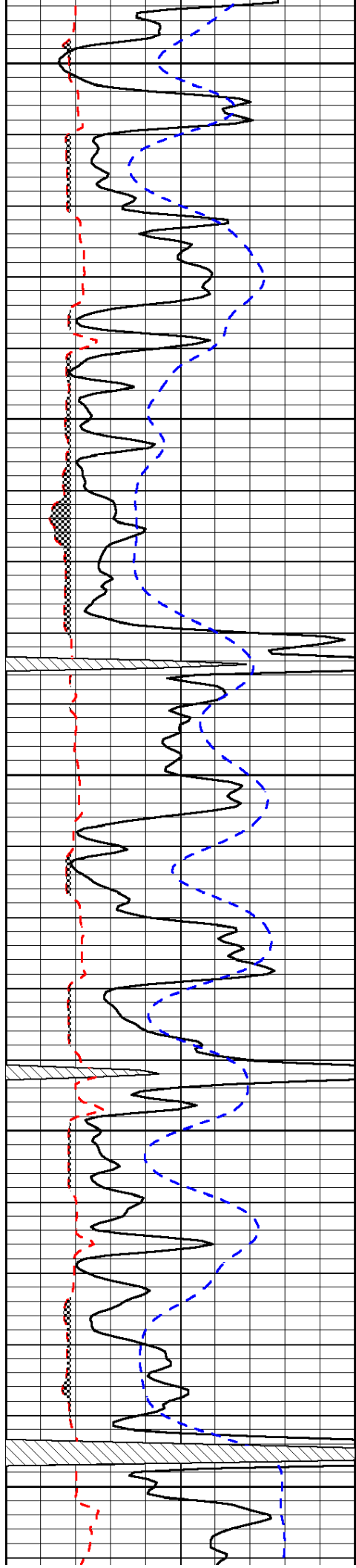
Database File: c:\warrior\data\culbreath_coburn #2-8\culbreathhd.db
Dataset Pathname: dil\culmain
Presentation Format: micro
Dataset Creation: Tue Apr 17 13:57:06 2012
Charted by: Depth in Feet scaled 1:240

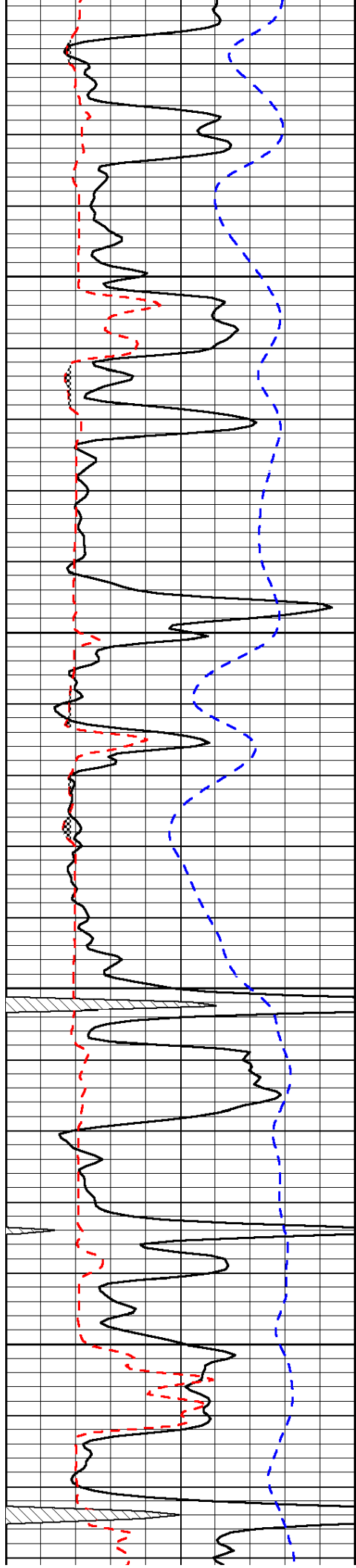
0	Gamma Ray	150
6	Micro Log Caliper (GAPI)	16
-200	SP (mV)	0

0	Micro Inverse 1 X 1	40
0	Micro Normal 2"	40
15000	Line Weight	0

LSPD





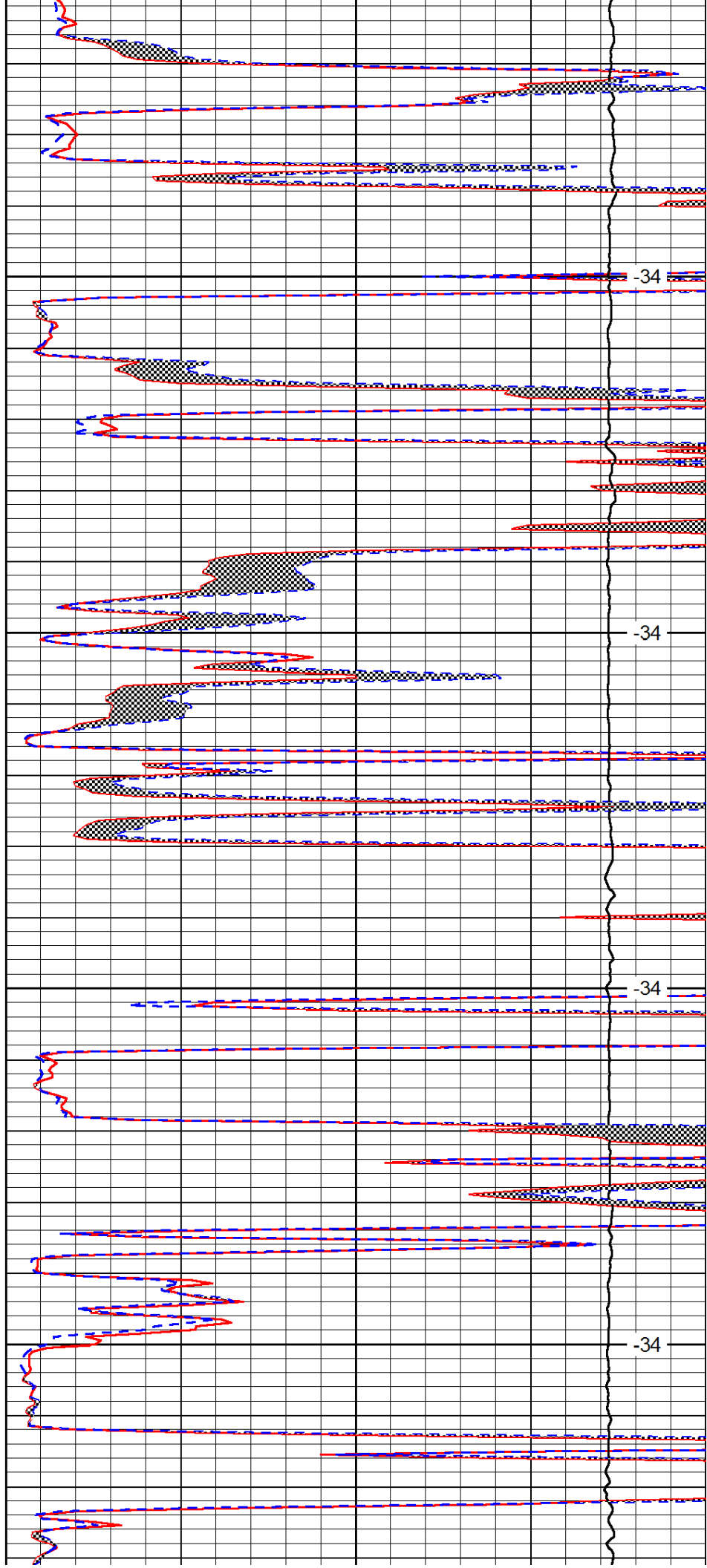


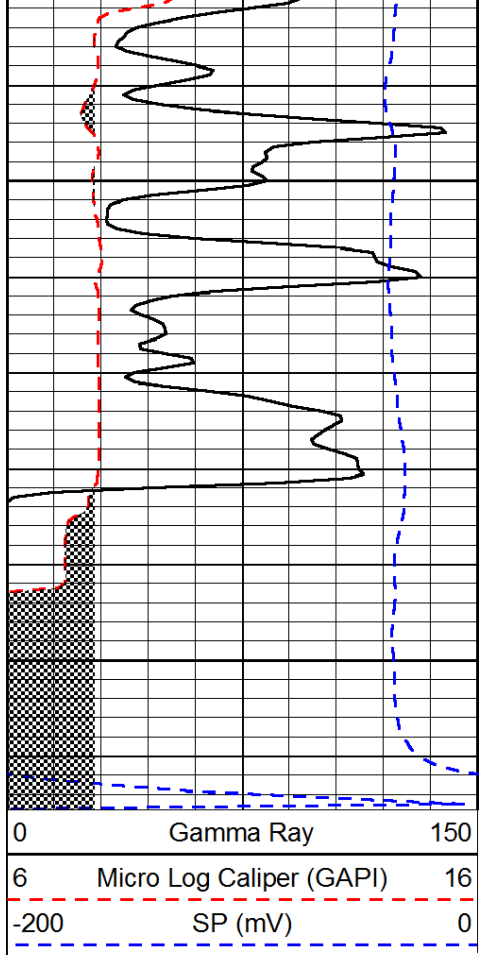
3850

3900

3950

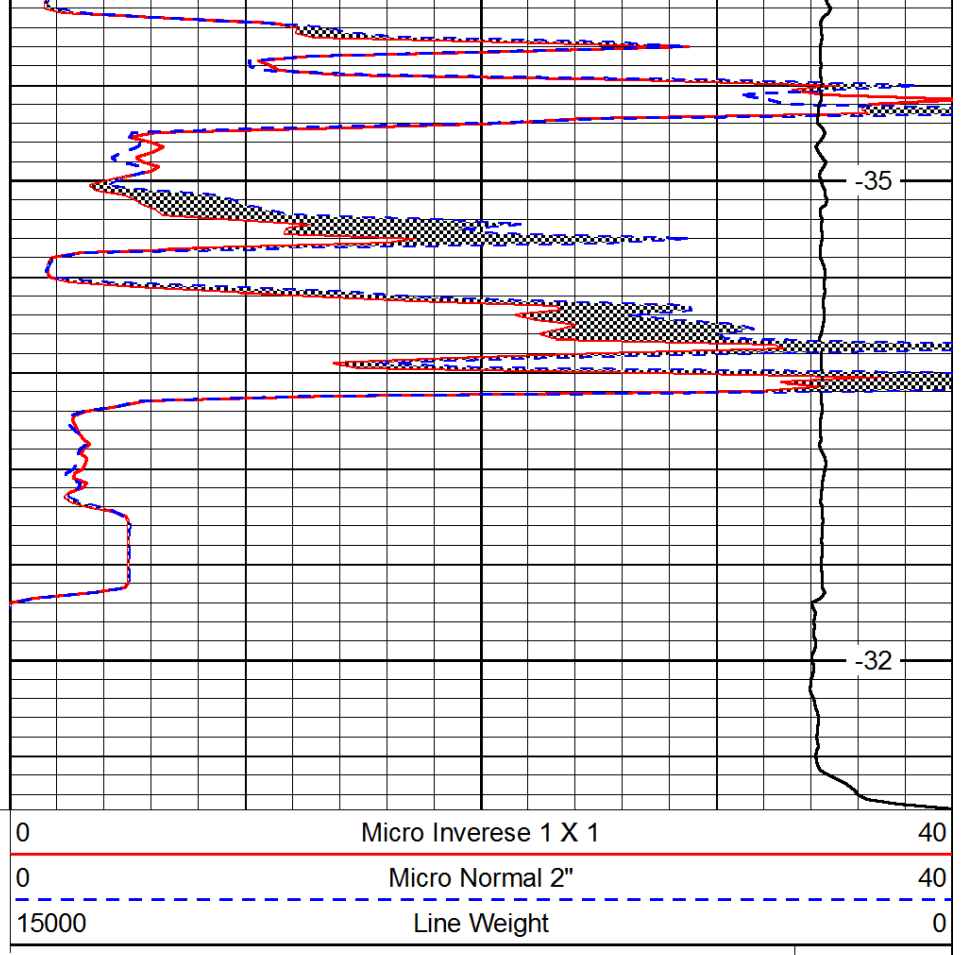
4000





4050

4100



LSPD