



DIGITAL LOG (785) 625-3858

Dual Induction Log

15-179-21298-0-00

API No.	Company	Culbreath Oil & Gas Company, Inc.
	Well	Coburn #2-8
	Field	Wildcat
	County	Sheridan State Kansas
	Location	E/2 NW 1320' FNL / 1950' FWL
	Sec: 8	Twp: 10S Rge: 26W
Permanent Datum	Ground Level	Elevation 2612
Log Measured From	Kelly Bushing	9 Ft. Above Perm. Datum
Drilling Measured From	Kelly Bushing	K.B. 2621 D.F. 2612 G.L. 2612

Date	4/17/2012
Run Number	One
Depth Driller	4110
Depth Logger	4110
Bottom Logged Interval	4109
Top Log Interval	250
Casing Driller	8.625 @ 253
Casing Logger	262
Bit Size	7.875
Type Fluid in Hole	Chemical
Salinity, ppm CL	3200
Density / Viscosity	9.1 55
pH / Fluid Loss	10.5 7.2
Source of Sample	Flowline
Rm @ Meas. Temp	0.60 @ 68
Rmf @ Meas. Temp	0.45 @ 68
Rmc @ Meas. Temp	0.81 @ 68
Source of Rmf / Rmc	Charts
Rm @ BHT	0.35 @ 117
Operating Rig Time	5 Hours
Max Rec. Temp. F	117
Equipment Number	15
Location	Hays
Recorded By	R. Barnhart
Witnessed By	Tim Priest

<<< Fold Here >>>

All interpretations are opinions based on inferences from electrical or other measurements and we cannot and do not guarantee the accuracy or correctness of any interpretation, and we shall not, except in the case of gross or willful negligence on our part, be liable or responsible for any loss, costs, damages, or expenses incurred or sustained by anyone resulting from any interpretation made by any of our officers, agents or employees. These interpretations are also subject to our general terms and conditions set out in our current Price Schedule.

Comments

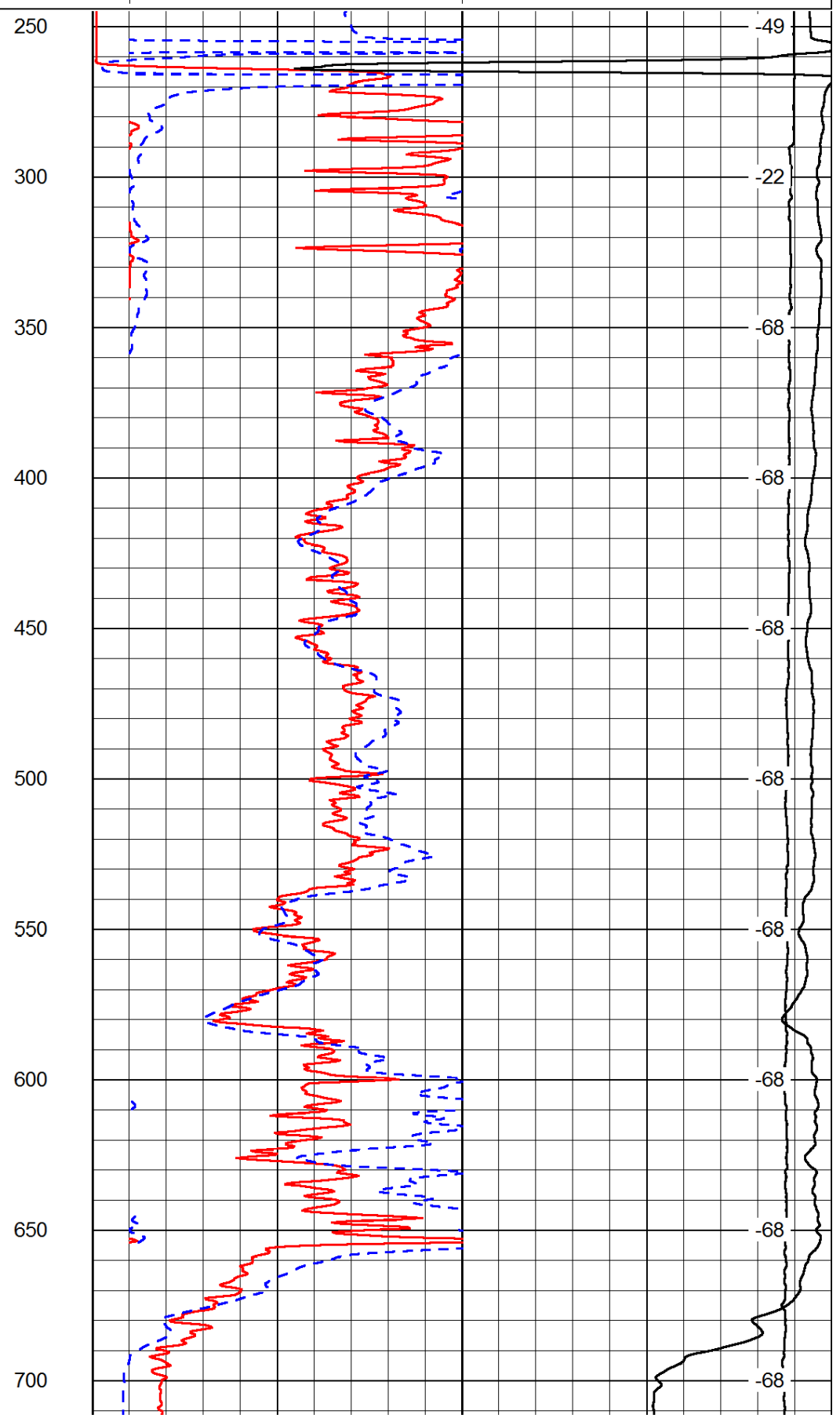
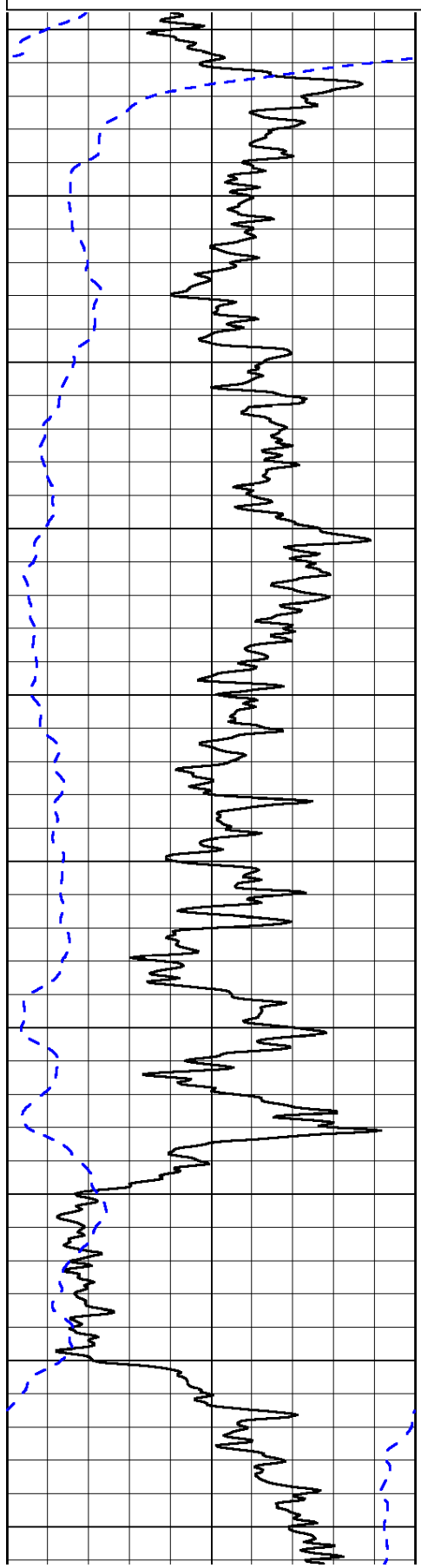
Thank you for using Log-Tech, Inc.  
 (785) 625-3858  
 Quinter, KS:  
 Exit 107, 8N, 1W  
 2N, SE into

Database File: c:\warrior\data\culbreath\_coburn #2-8\culbreathhd.db  
 Dataset Pathname: dil\culmain  
 Presentation Format: dil2in  
 Dataset Creation: Tue Apr 17 13:57:06 2012  
 Charted by: Depth in Feet scaled 1:600

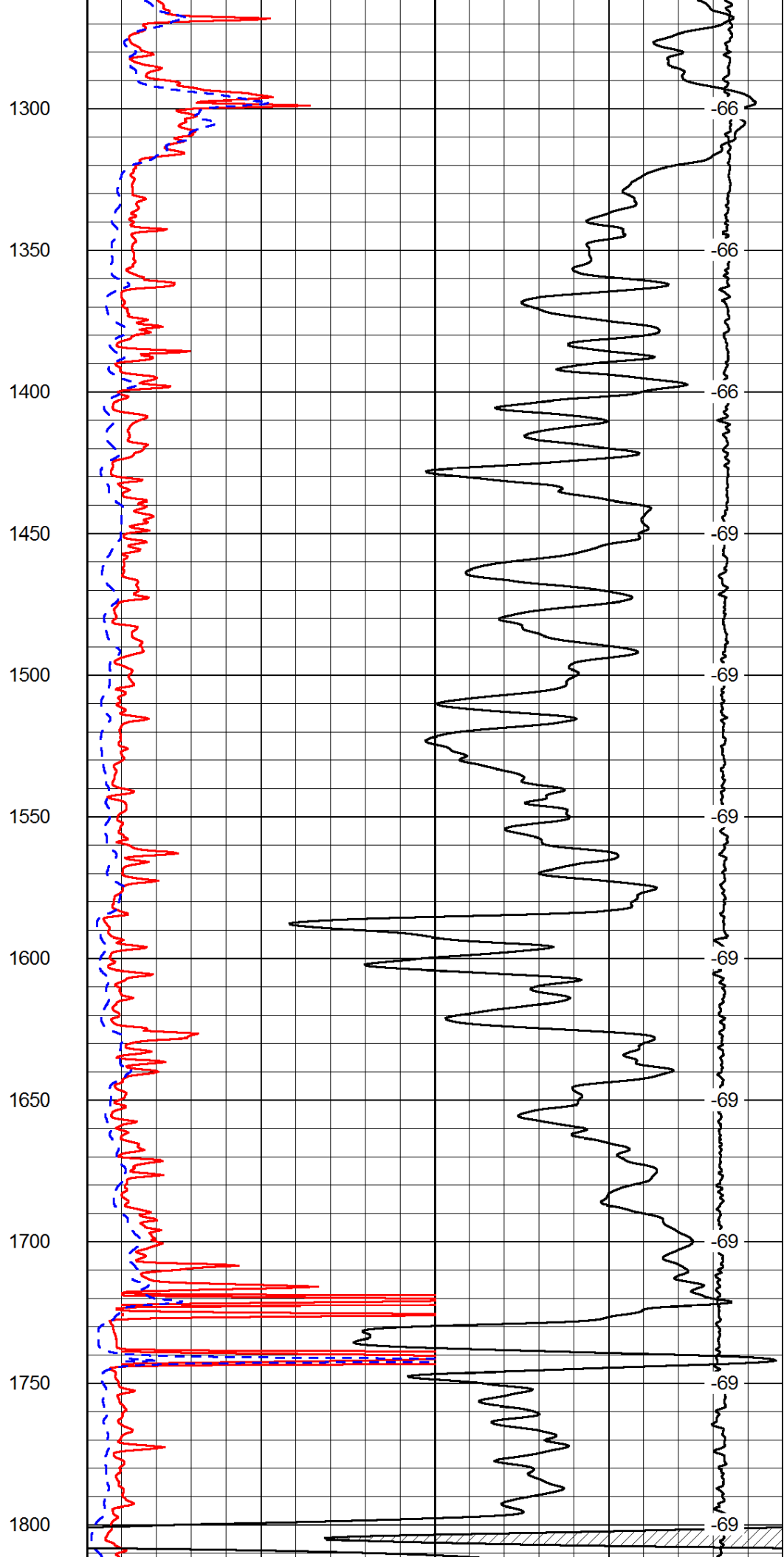
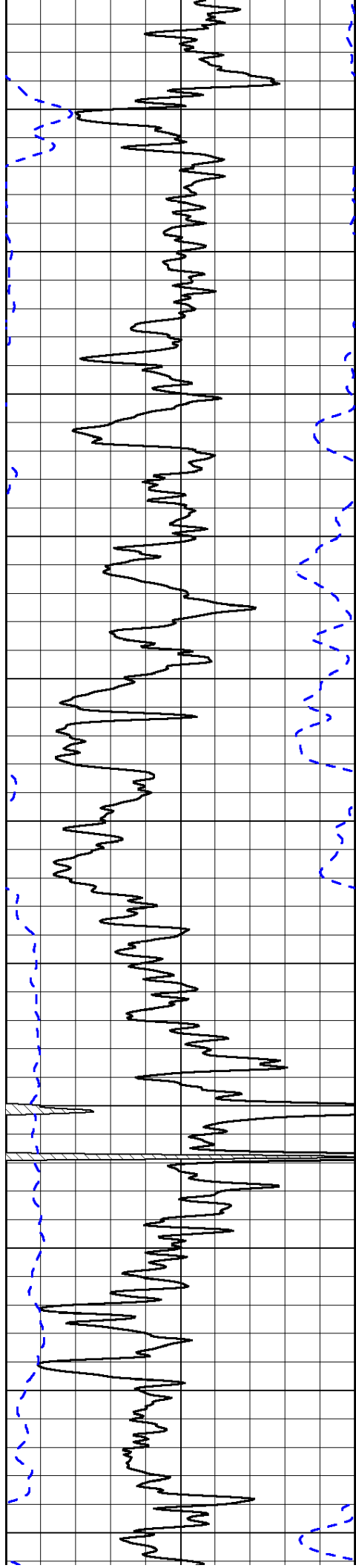
0	Gamma Ray	150
-200	SP (mV)	0

0	Shallow Resistivity	50
0	Deep Resistivity	50
1000	Conductivity	0
15000	Line Tension	0
50	Shallow Resistivity	500
50	Deep Resistivity	500

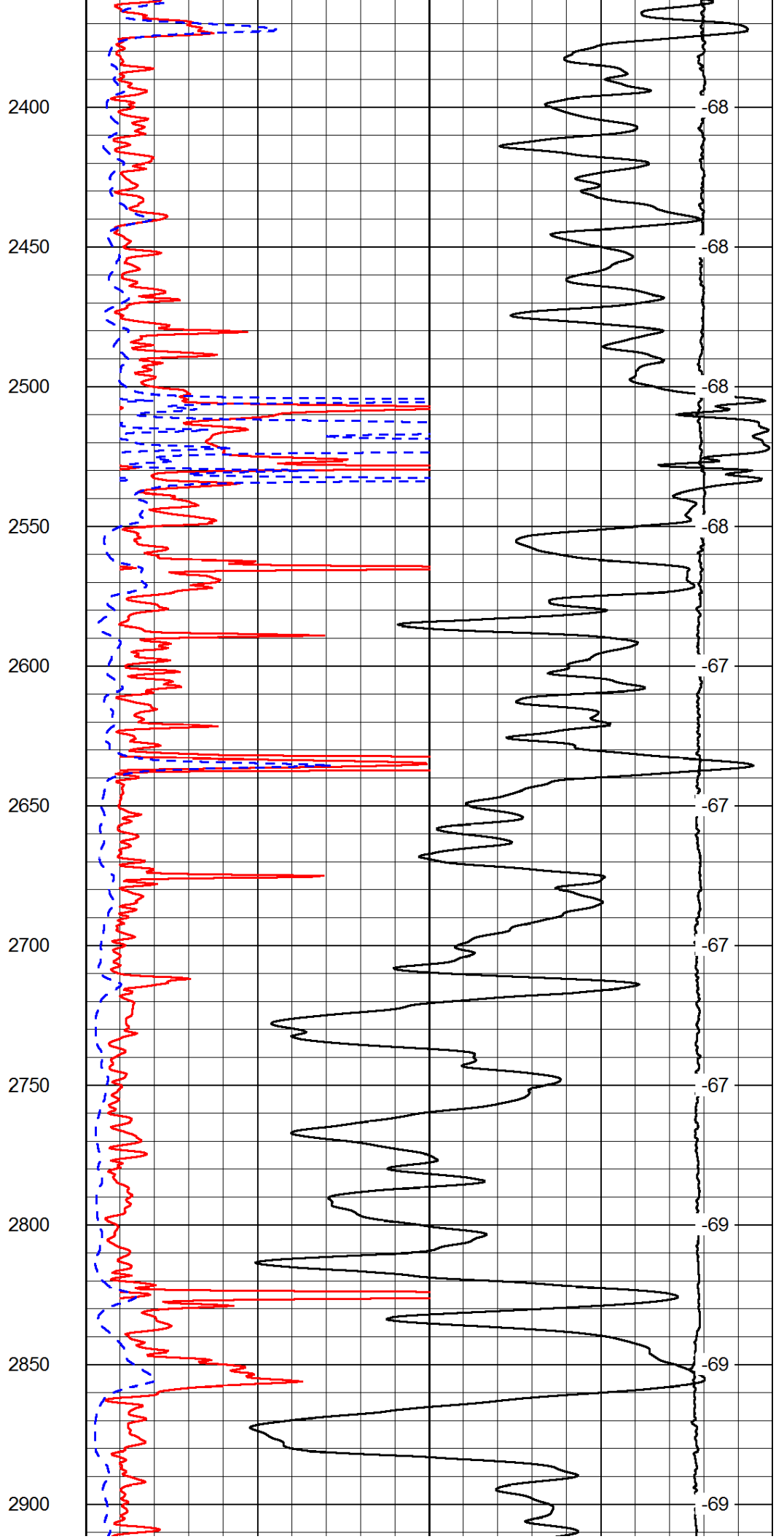
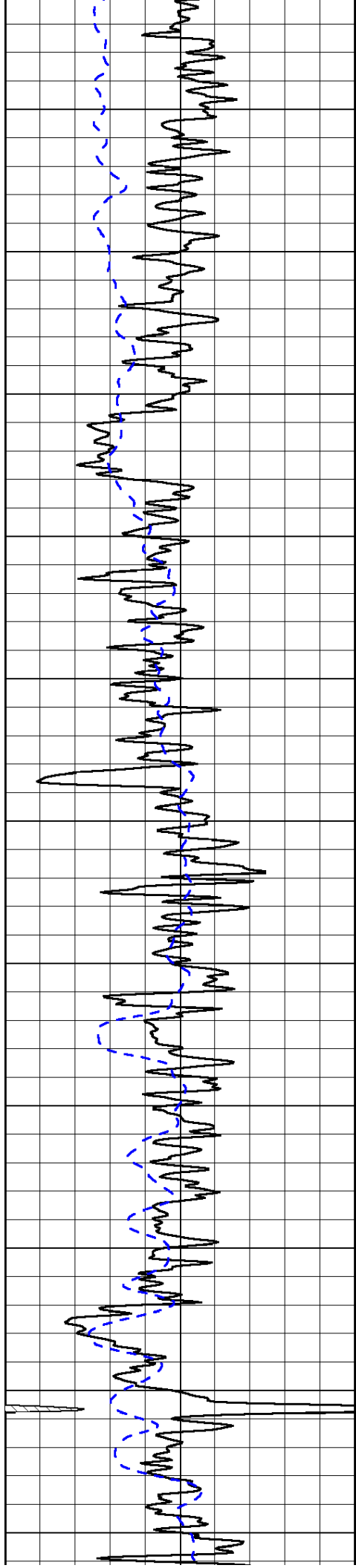
LSPD

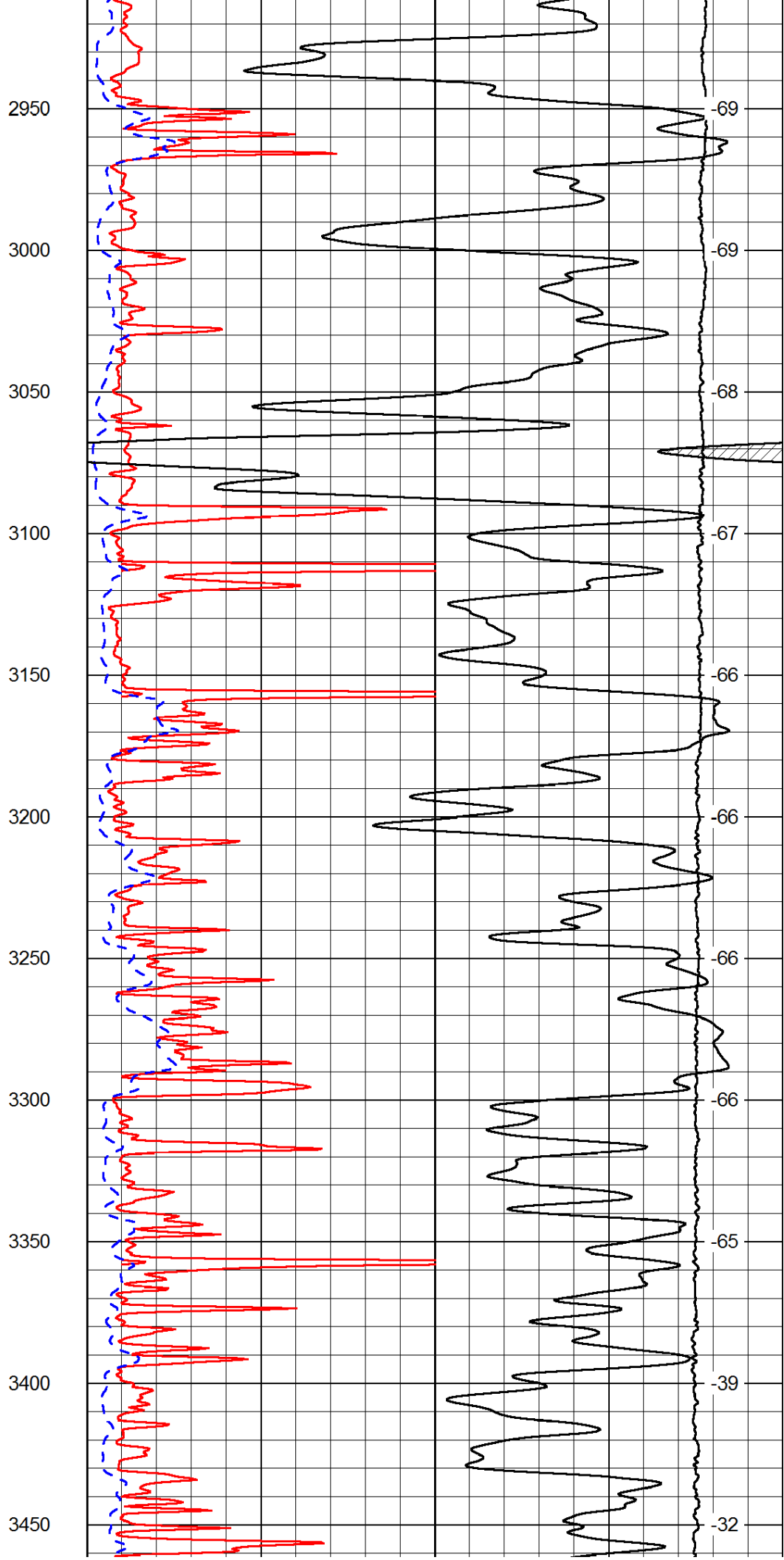
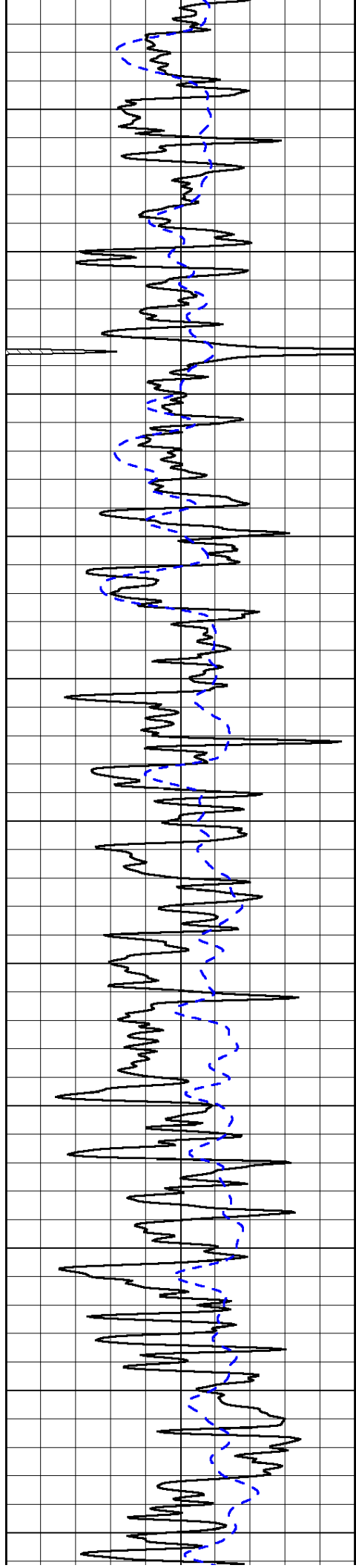


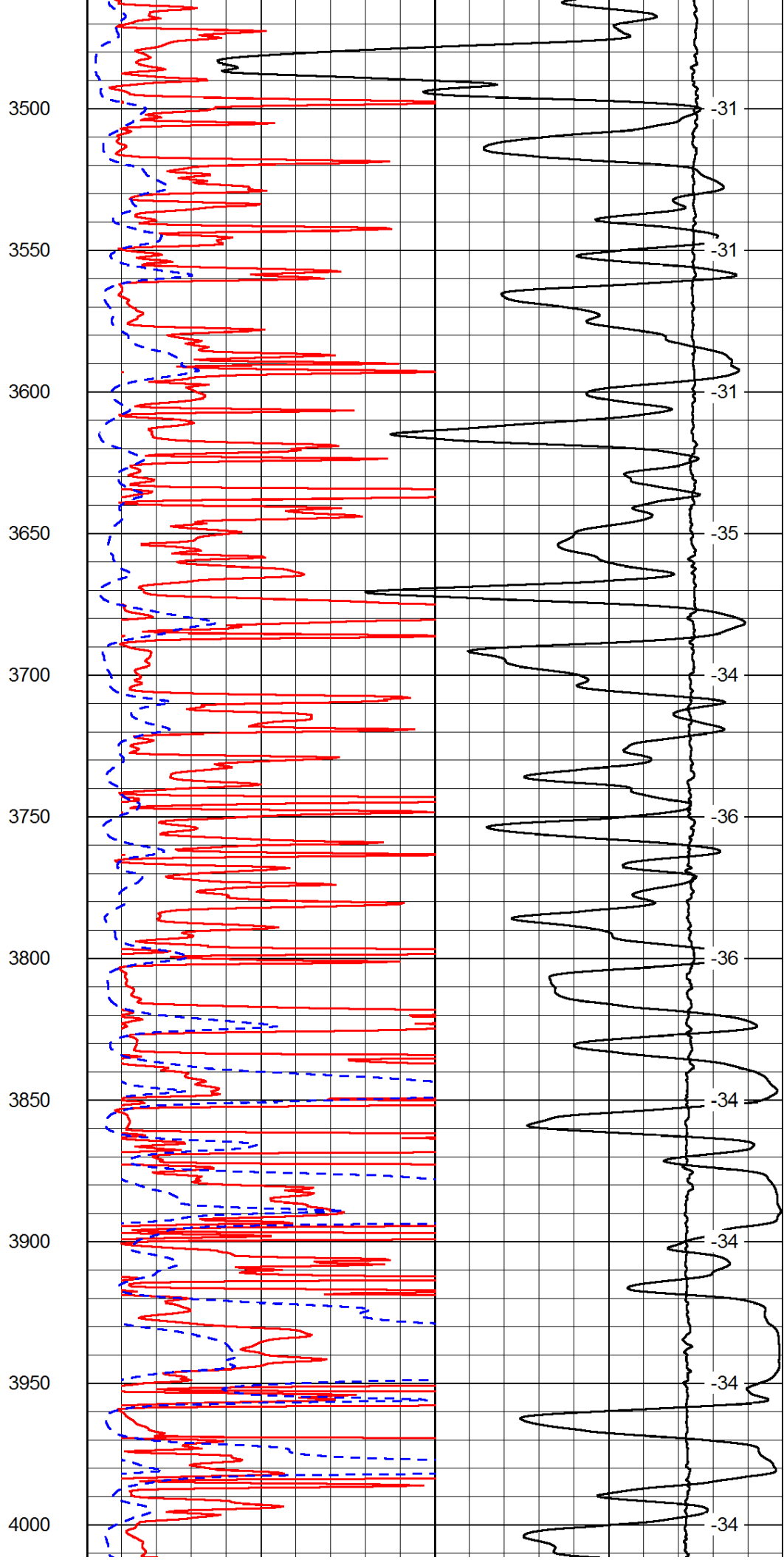
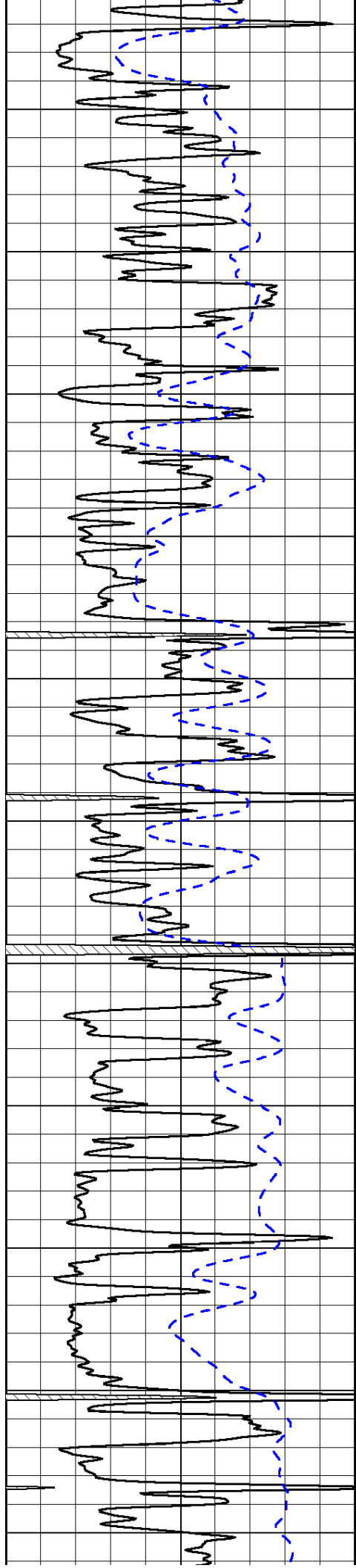


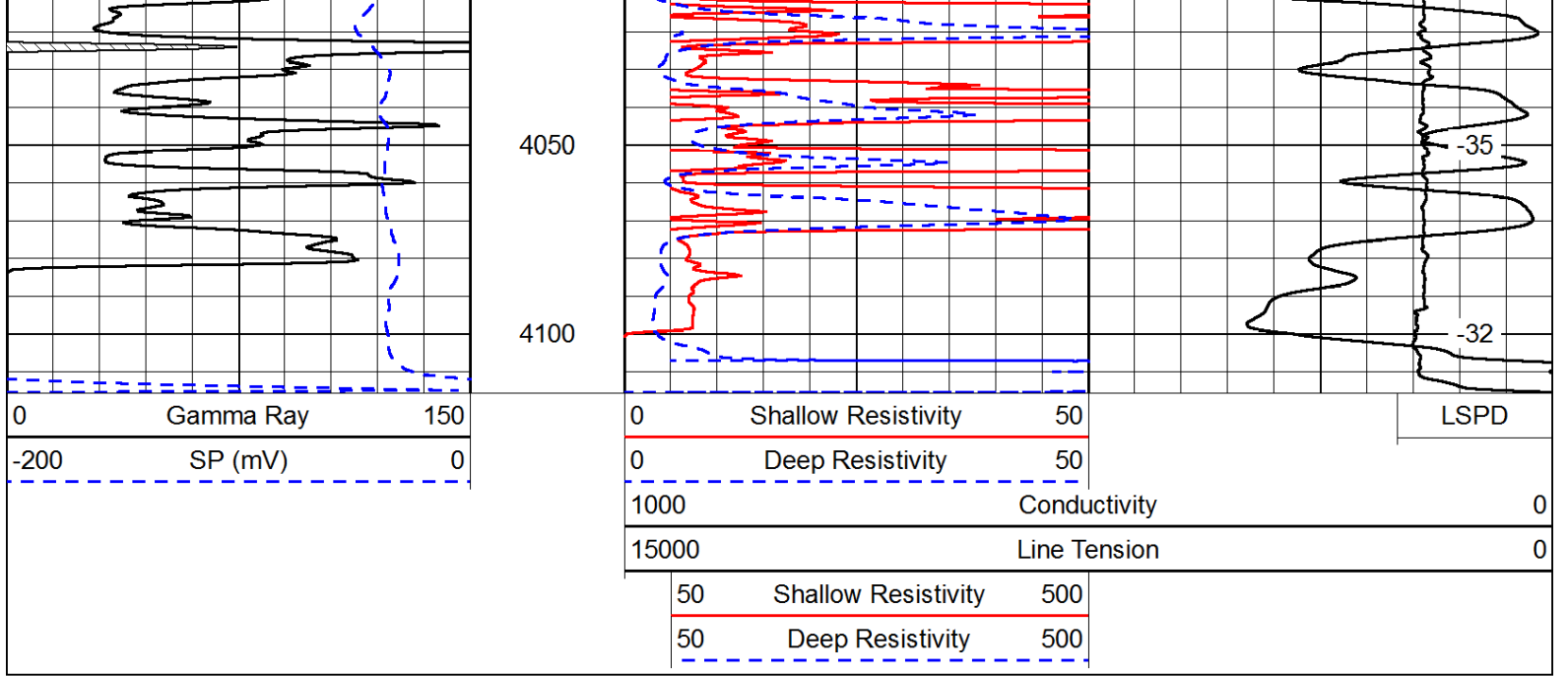




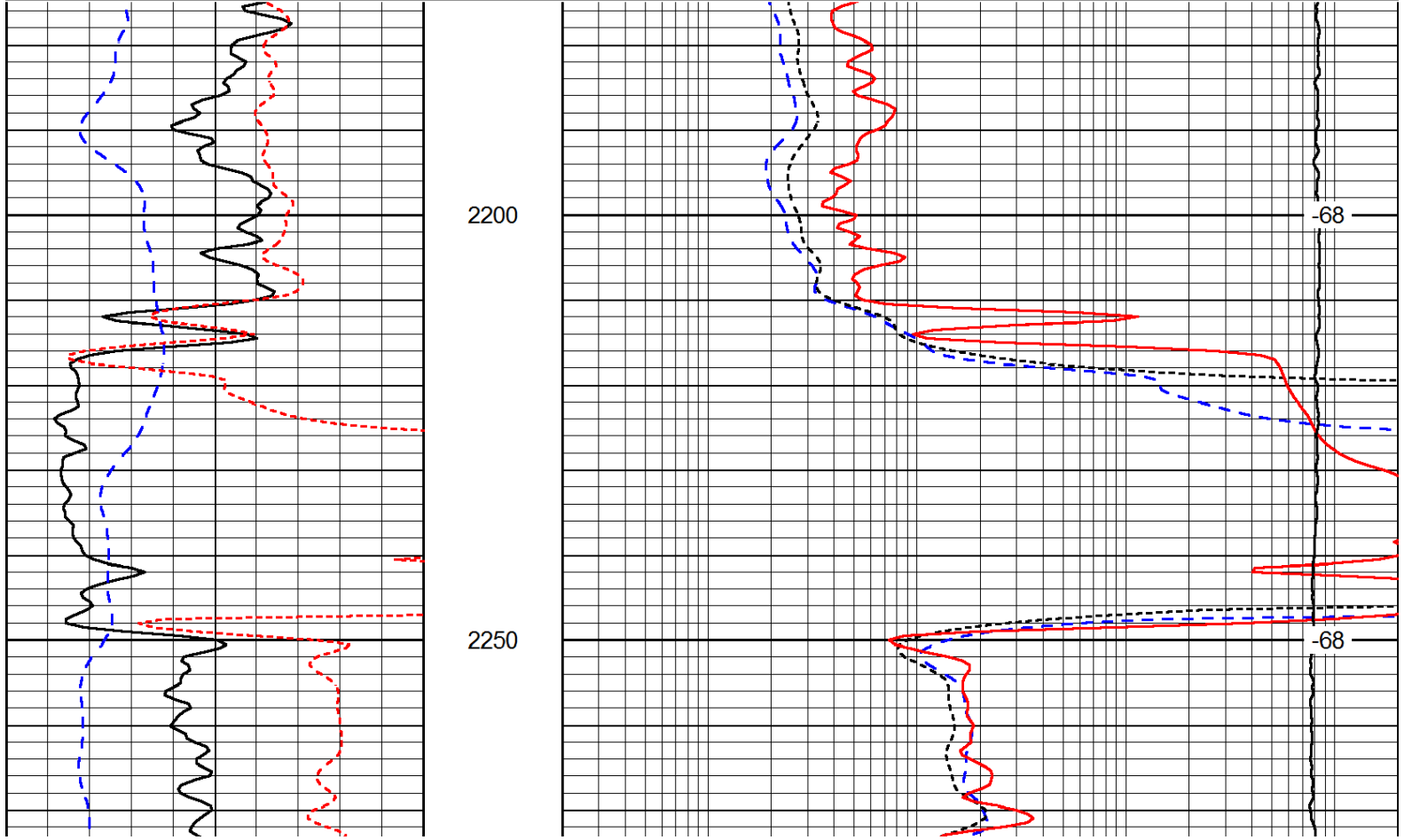
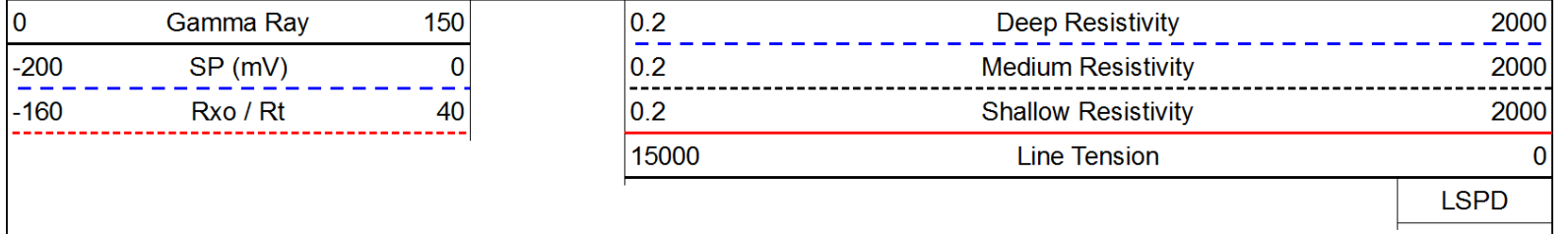








Database File: c:\warrior\data\culbreath\_coburn #2-8\culbreathhd.db  
 Dataset Pathname: dil/culmain  
 Presentation Format: dil  
 Dataset Creation: Tue Apr 17 13:57:06 2012  
 Charted by: Depth in Feet scaled 1:240



0	Gamma Ray	150
-200	SP (mV)	0
-160	Rxo / Rt	40

0.2	Deep Resistivity	2000
0.2	Medium Resistivity	2000
0.2	Shallow Resistivity	2000
15000	Line Tension	0

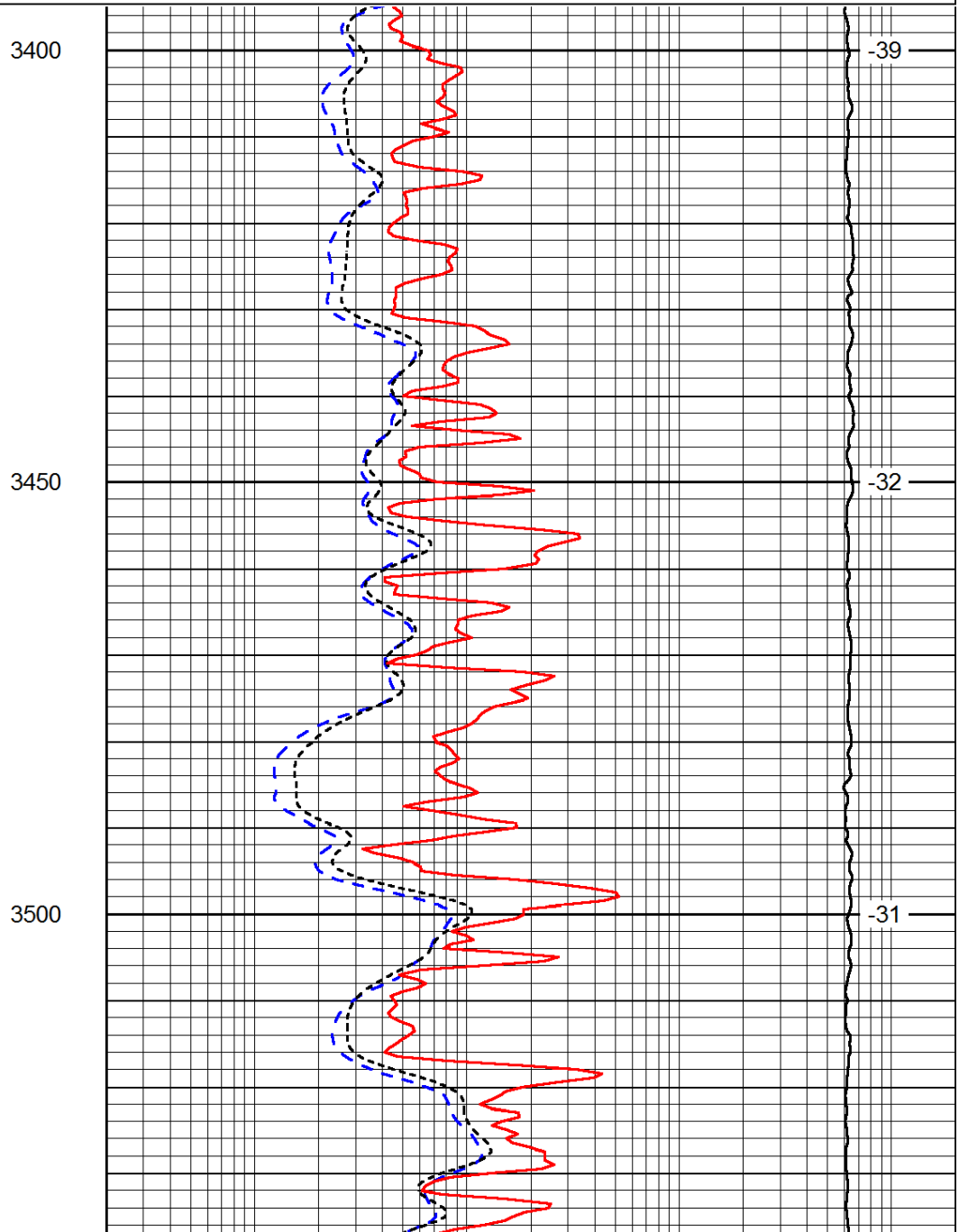
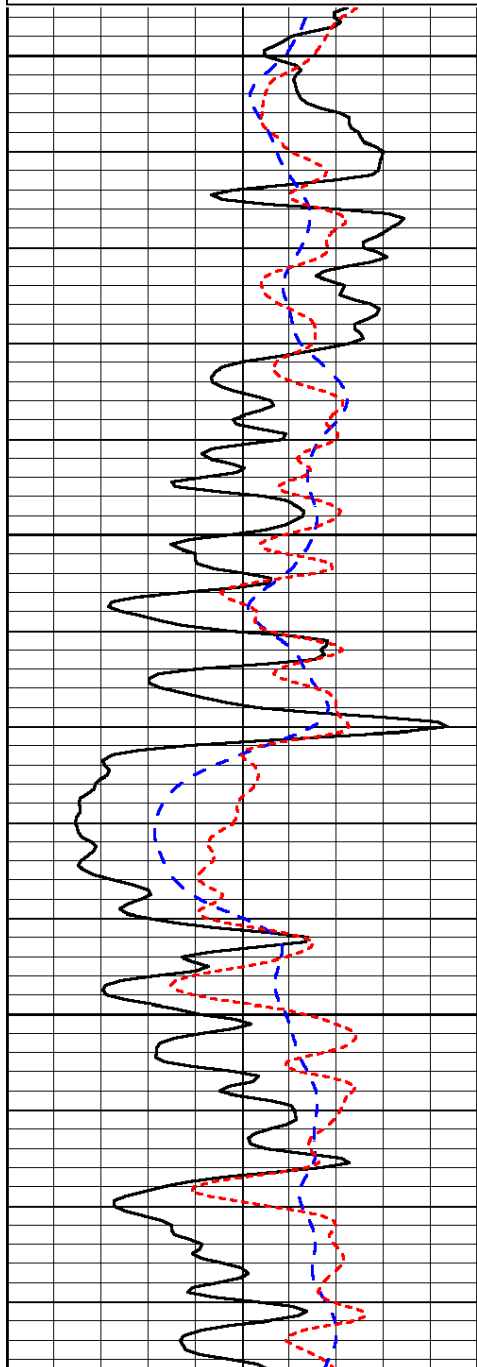
LSPD

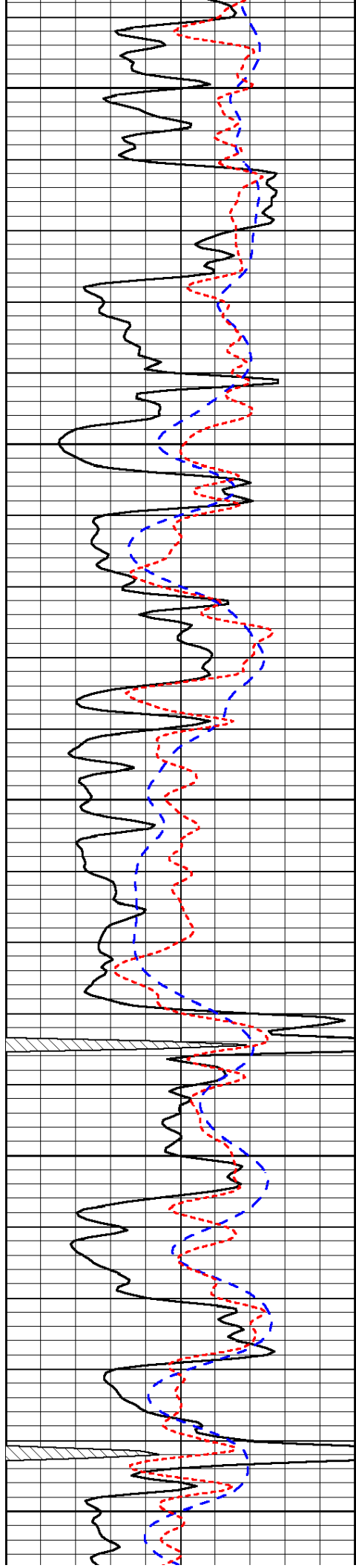
Database File: c:\warrior\data\culbreath\_coburn #2-8\culbreathhd.db  
 Dataset Pathname: dil/culmain  
 Presentation Format: dil  
 Dataset Creation: Tue Apr 17 13:57:06 2012  
 Charted by: Depth in Feet scaled 1:240

0	Gamma Ray	150
-200	SP (mV)	0
-160	Rxo / Rt	40

0.2	Deep Resistivity	2000
0.2	Medium Resistivity	2000
0.2	Shallow Resistivity	2000
15000	Line Tension	0

LSPD





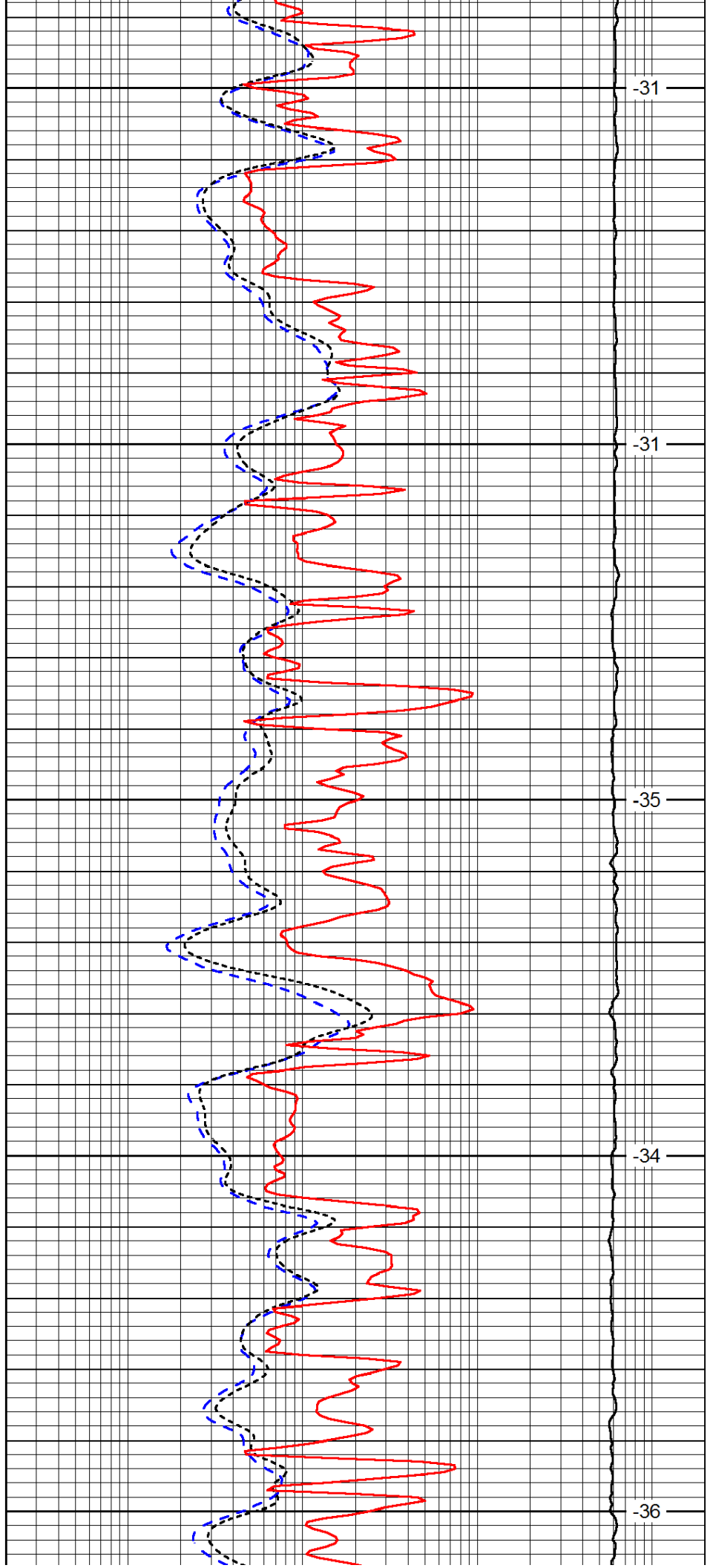
3550

3600

3650

3700

3750



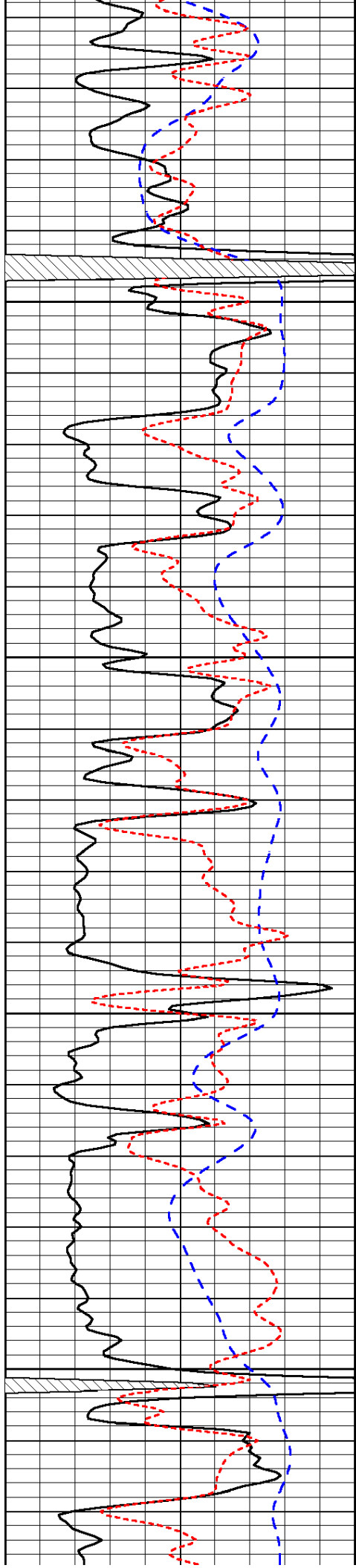
-31

-31

-35

-34

-36

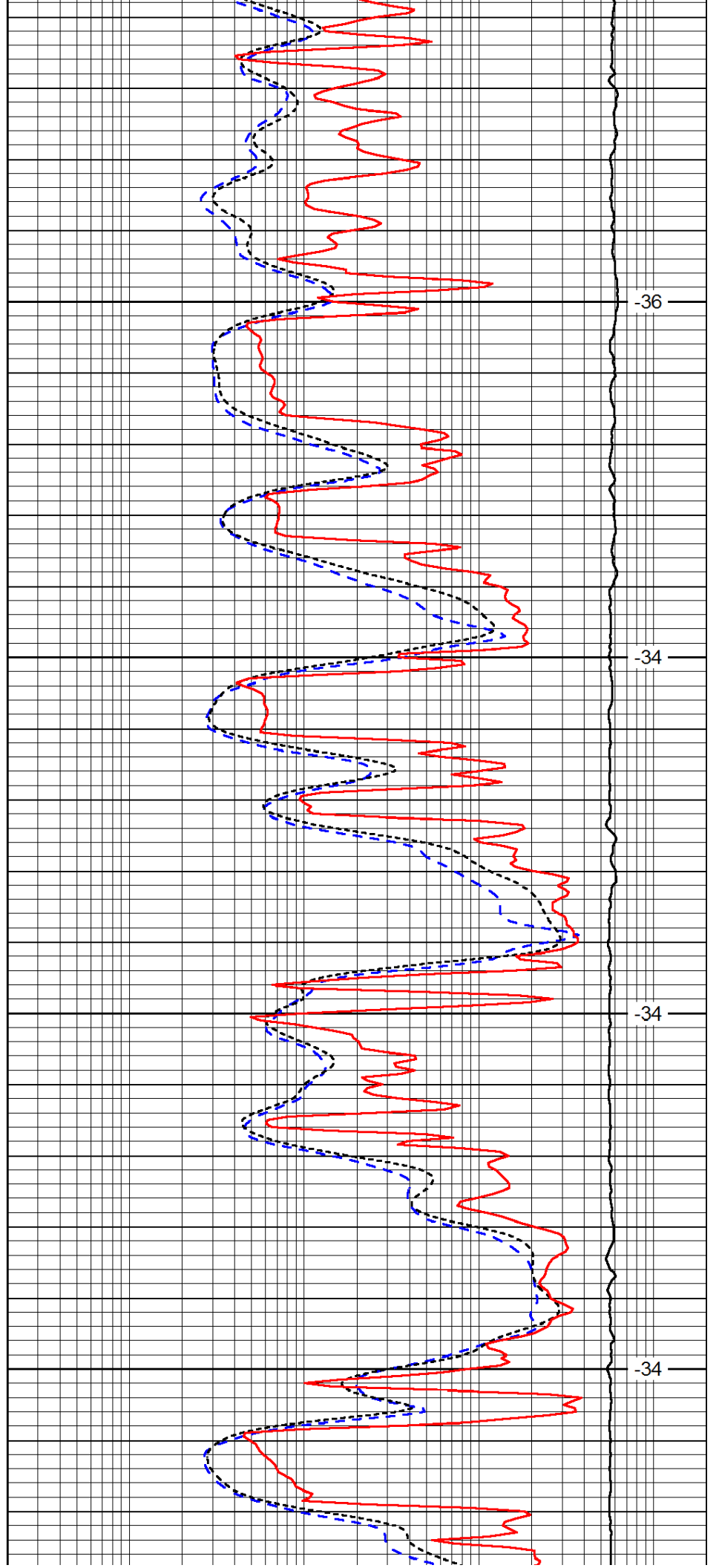


3800

3850

3900

3950

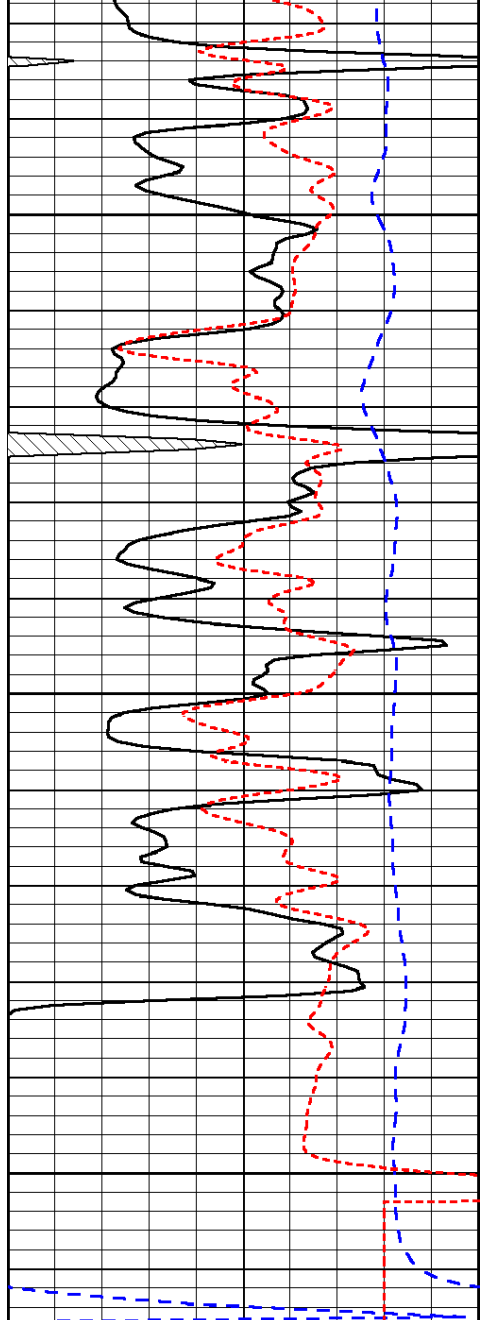


-36

-34

-34

-34

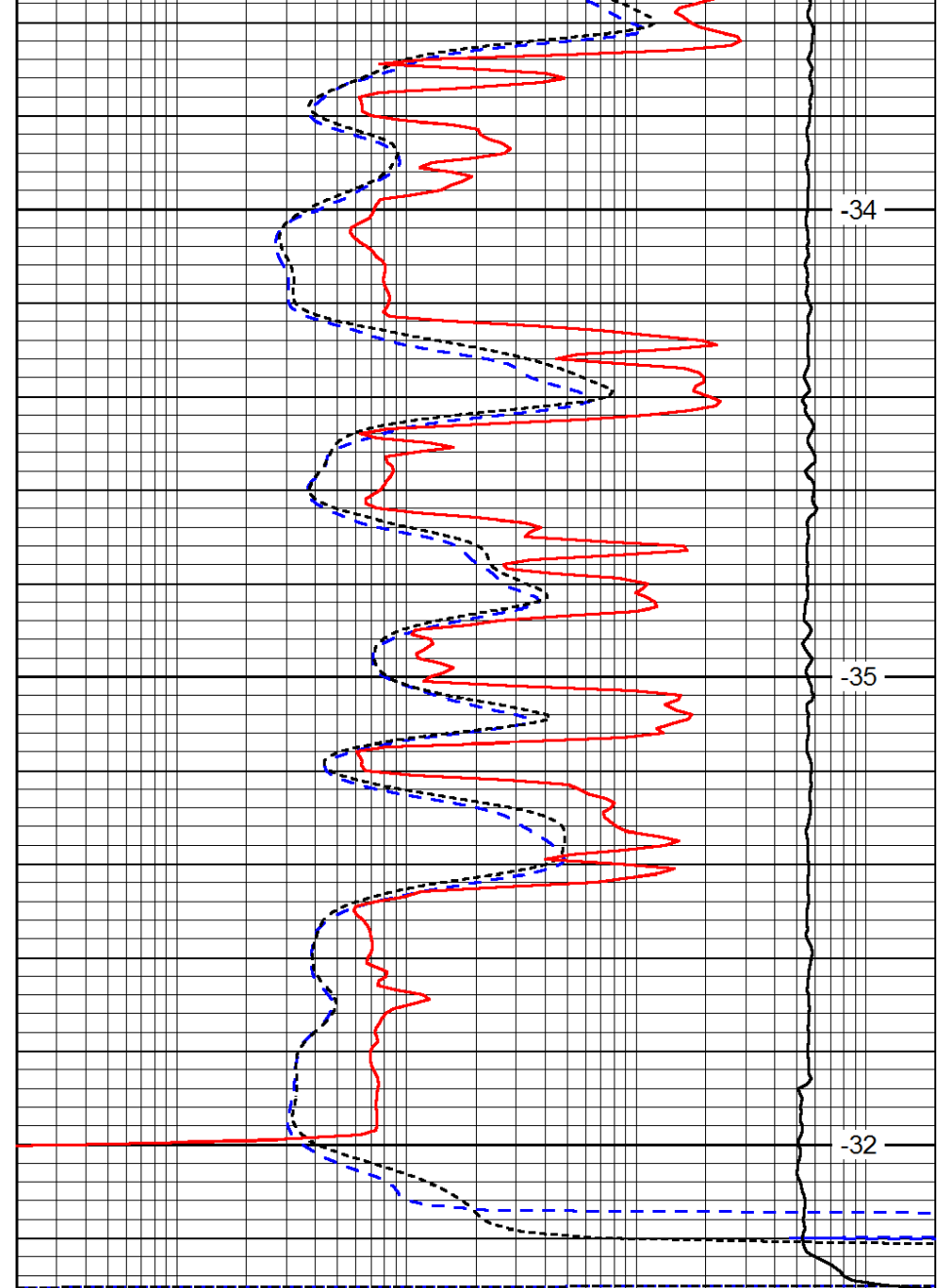


4000

4050

4100

0	Gamma Ray	150
-200	SP (mV)	0
-160	Rxo / Rt	40



-34

-35

-32

0.2	Deep Resistivity	2000
0.2	Medium Resistivity	2000
0.2	Shallow Resistivity	2000
15000	Line Tension	0

LSPD