



**MIDWEST SURVEYS**  
 LOGGING - PERFORATING - CONSULTING SERVICES  
 P.O. Box 68, Osawatomie, KS 66064  
 913.755.2128

**GAMMA RAY / NEUTRON / CCL**

File No. \_\_\_\_\_

Company **Bradley Oil Company**

Well **Hicks No. 1-21**

Field **Gardner South**

County **Johnson** State **Kansas**

Location **4037' FSL & 2933' FEL**  
**SE-SE-NE-NW**

Sec. 28 Twp. 14s Rge. 22e  
 Permanent Datum **GL** Elevation **NA**  
 Log Measured From **GL** K.B. NA  
 Drilling Measured From **GL** D.F. NA  
 G.L. NA

Date **12-31-2012**

Run Number **One**

Depth Driller **888.0**

Bottom Logged Interval **870.0 - 889.9**

Top Log Interval **20.0**

Fluid Level **Full**

Type Fluid **Water**

Density / Viscosity **NA**

Salinity - PPM Cl **NA**

Max Recorded Temp **NA**

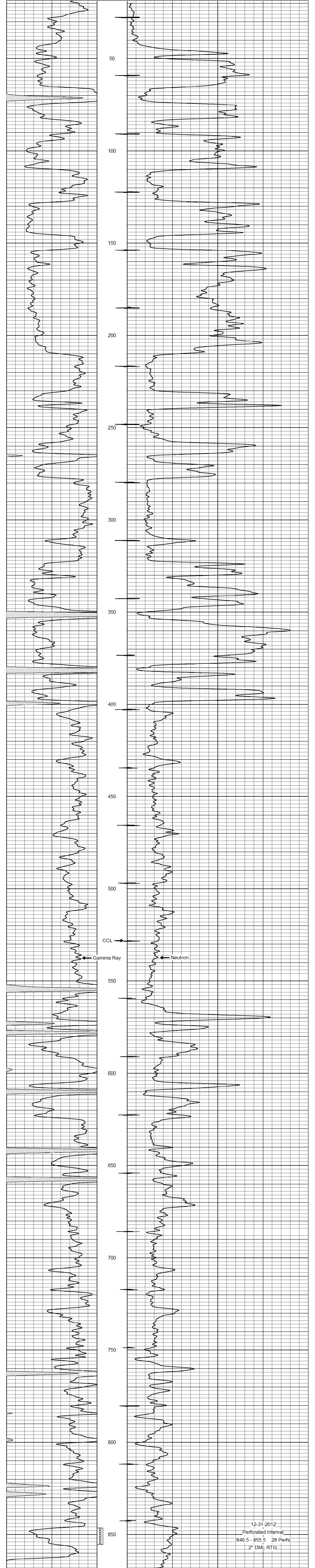
Estimated Cement Top **0.0**

BORE-HOLE RECORD		CASING RECORD			
Run No.	BIT FROM TO	SIZE	WGT.	FROM	TO
One	9.875" - 48.0"	7.00"	17.0 #	0.0	48.0
Two	5.825" - 48.0"	2.875"	6.5 #	0.0	880.0

Recorded By **Steve Mirdsch** Location **102 Osawatomie**

Missed By **Joe Thyer**

Database File: hicks21i.db  
 Dataset Pathname: pass1  
 Presentation Format: gr-n-ccl  
 Dataset Creation: Mon Dec 31 13:37:27 2012 by Log SCH 111116  
 Charted by: Depth in Feet scaled 1:240



12-31-2012  
 Perforated Interval  
 846.5 - 855.5 28 Perfs  
 2" DML RTG

0 Gamma Ray (cps) 150 100 Neutron (cps) 1900

150 Gamma Ray (cps) 300