



MIDWEST SURVEYS
 LOGGING - PERFORATING - CONSULTING SERVICES
 P.O. Box 68, Osawatomie, KS 66064
 913 / 755 - 2128

GAMMA RAY / NEUTRON / CCL

File No. _____

Company **Bradley Oil Company**

Well **Gillespie No. A-3**

Field **Longanecker**

County **Johnson** State **Kansas**

Location **2858' FSL & 1534' FEL
SE-SE-SW-NE**

Other Services **Perforate**

Sec. 30 Twp. 14S Rge. 22E
 Permanent Datum **GL** Elevation **NA**
 Log Measured From **GL** K.B. NA
 Drilling Measured From **GL** D.F. NA
 G.L. NA

Date **12-31-2012**

Run Number **One**

Depth Diller **888.0**

Depth Logger **877.0**

Bottom Logged Interval **876.0**

Top Log Interval **200.0**

Fluid level **Full**

Type Fluid **Water**

Density / Viscosity **NA**

Salinity - PPM Cl **NA**

Max Recorded Temp **NA**

Estimated Cement Top **0.0**

Equipment No. **102** Location **Osawatomie**

Recorded By **Steve Windisch**

Witnessed By **Joe Thyer**

BORE-HOLE RECORD				CASING RECORD			
RUN	BIT	FROM	TO	SIZE	WGT.	FROM	TO
One	9.875"	0.0	45.0	7.00"	17.0 #	0.0	45.0
Two	5.625"	42.0	888.0	2.875"	6.5 #	0.0	880.0

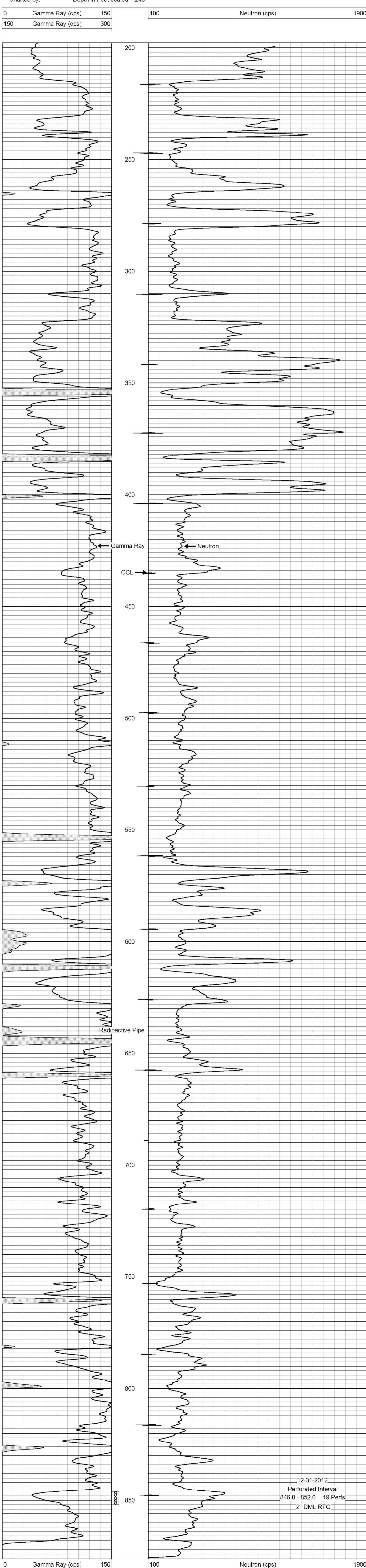
<<< Fold Here >>>

All interpretations are opinions based on inferences from electrical or other measurements and we cannot and do not guarantee the accuracy or correctness of any interpretation, and we shall not, except in the case of gross or willful negligence on our part, be liable or responsible for any loss, costs, damages, or expenses incurred or sustained by anyone resulting from any interpretation made by any of our officers, agents or employees. These interpretations are also subject to our general terms and conditions set out in our current Price Schedule.

Comments

Drilling Contractor :
Hat Drilling

Database File: gillespie3a.cb
 Dataset Pathname: pass1
 Presentation Format: gr-n-ccl
 Dataset Creation: Mon Dec 31 11:46:31 2012 by Log SCH 111116
 Charted by: Depth in Feet scaled 1:240



12-31-2012
 Perforated Interval
 846.0 - 852.0 19 Perfs
 2" DML RTG

Gamma Ray (cps)		Neutron (cps)	
0	150	100	1900
150	300		