

**MIDWEST SURVEYS**  
 LOGGING - PERFORATING - CONSULTING SERVICES  
 P.O. Box 68, Osawatomie, KS 68064  
 913 / 785 - 2128

**GAMMA RAY / NEUTRON / CCL**

File No. \_\_\_\_\_  
 Company **R.T. Enterprises Of Kansas, LLC.**  
 Well **Pearson No. - 36**  
 Field **Baldwin**  
 County **Douglas** State **Kansas**

Location **2120' FSL & 200' FEL**  
**SE-N-E-NE-SE**

Sec. 11 Twp. 15S Rge. 20E  
 Permanent Datum **GL** Elevation **NA**  
 Log Measured From **GL**  
 Drilling Measured From **GL**

Date **1-14-2013**  
 Run Number **One**  
 Depth Logger **908.8**  
 Bottom Logged Interval **907.8**  
 Top Log Interval **20.0**  
 Fluid Level **Full**

Type Fluid **Water**  
 Density / Viscosity **NA**  
 Salinity - PPM Cl **NA**  
 Max Recorded Temp **NA**  
 Estimated Cement Top **0.0**  
 Equipment No. **104** Location **Osawatomie**  
 Recorded By **Gary Windisch**

Misused By **Lance Town**

BORE-HOLE RECORD  
 RIN No. **BIT** **TO** **SIZE** **WGT.** **FROM** **TO**  
 One **9.875"** **0.0** **7.00"** **17.0#** **0.0** **88.0**  
 Two **5.925"** **88.0** **959.0** **2.875"** **6.5#** **0.0**

CASING RECORD  
 TO **88.0**  
 FROM **0.0**  
 WT. **17.0#**  
 Set **At**

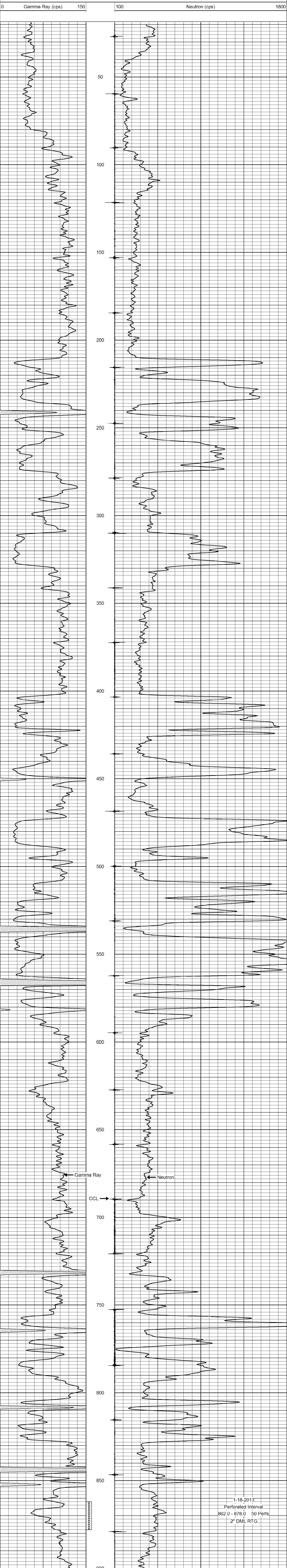
<<< Fold Here >>>

All interpretations are opinions based on inferences from electrical or other measurements and we cannot and do not guarantee the accuracy or correctness of any interpretation, and we shall not, except in the case of gross or willful negligence on our part, be liable or responsible for any loss, costs, damages, or expenses incurred or sustained by anyone resulting from any interpretation made by any of our officers, agents or employees. These interpretations are also subject to our general terms and conditions set out in our current Price Schedule.

**Comments**

Drilling Contractor :  
**Town Oilfield Services, Inc.**

Database File: pearson36.cb  
 Dataset Pathname: pass1  
 Presentation Format: gr-n-ccl  
 Dataset Creation: Mon Jan 14 14:43:23 2013 by Log SCH 111116  
 Charted by: Depth in Feet scaled 1:240



1-18-2013  
 Perforated Interval  
 862.0 - 878.0 50 Perfs  
 2" DML RTG