



**MIDWEST SURVEYS**  
 LOGGING - PERFORATING - CONSULTING SERVICES  
 P.O. Box 68, Osawatomie, KS 66064  
 913 / 755 - 2128

**GAMMA RAY / NEUTRON / CCL**

File No. \_\_\_\_\_

Company **Colt Energy, Inc.**

Well **Gleue Trust E&I (852)** No. **K-9**

Field **Neosho Falls - LeRoy**

County **Coffey** State **Kansas**

Location **8 1/2 FSL & 2475' FEL**

**SW-NW-SWSE**

Other Services  
Perforate

Sec. **36** Twp. **22S** Rge. **16E** Elevation **1009'**

Perforation Datum **GL** K/B **NA**

Log Measured From **GL** D.F. **NA**

Drilling Measured From **GL** G.L. **1009'**

Date **11-30-2012**

Run Number **One**

Depth Logger **1071.0**

Bottom Logger **1052.9**

Bottom Logged Interval **1051.9**

Top Log Interval **20.0**

Fluid Level **Full**

Type Fluid **Water**

Density / Viscosity **NA**

Salinity - PPM Cl **NA**

Max Recorded Temp **NA**

Estimated Cement Top **NA**

Equipment No. **NA** Location **NA**

Recorded By **Steve Windisch** Sieve Windisch

Witnessed By **Rex Ashlock** Rex Ashlock

BORE-HOLE RECORD

CASING RECORD

Run	No.	BIT	FROM	TO	SIZE	WGT	FROM	TO
One	12.25"	0.0	42.50	8.625"	20.0 #	0.0	42.55	
Two	6.75"	42.50	1071.0	4.50"	10.5 #	0.0	1059.0	
					Barite Set	At	1055.0	

<<< Fold Here >>>

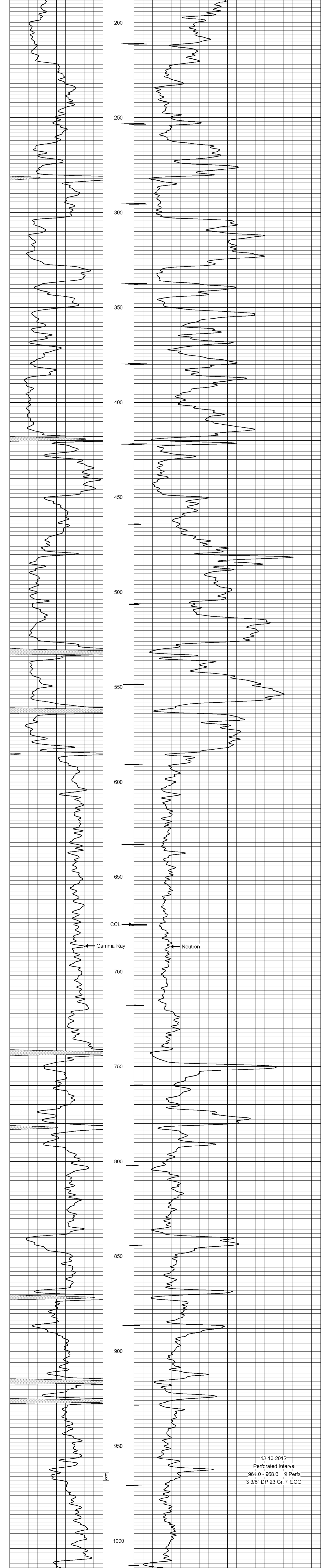
All interpretations are opinions based on inferences from electrical or other measurements and we cannot and do not guarantee the accuracy or correctness of any interpretation, and we shall not, except in the case of gross or willful negligence on our part, be liable or responsible for any loss, costs, damages, or expenses incurred or sustained by anyone resulting from any interpretation made by any of our officers, agents or employees. These interpretations are also subject to our general terms and conditions set out in our current Price Schedule.

Comments

Drilling Contractor :  
Finney Drilling Company

Database File: gleustrust9k.db  
 Dataset Pathname: pass1  
 Presentation Format: gr-n-ccl  
 Dataset Creation: Fri Nov 30 14:11:28 2012 by Log SCH 111116  
 Charted by: Depth in Feet scaled 1:240

0 Gamma Ray (cps) 150 100 Neutron (cps) 1900



12-10-2012  
 Perforated Interval  
 964.0 - 968.0 9 Perfs  
 3 3/8" DP 23 Gr. T ECG

0 Gamma Ray (cps) 150 100 Neutron (cps) 1900