



Pioneer Energy Services

Microresistivity Log

API No. 15-195-22,800-00-00

Company **Culbreath Oil & Gas Company, Inc.**
 Well **Deines No.1-29**
 Field **Splitter SW**
 County **Trego** State **Kansas**

Location **1650' FSL & 2210' FEL**

Sec: **29** Twp: **15S** Rge: **25W**

Other Services
 CNL/CDL
 DIL

Permanent Datum **Ground Level** Elevation **2515**
 Log Measured From **Kelly Bushing** 9 Ft. Above Perm. Datum
 Drilling Measured From **Kelly Bushing**

Elevation
 K.B. 2524
 D.F. 2515
 G.L. 2515

Date	9/26/2012
Run Number	Two
Depth Driller	4520
Depth Logger	4526
Bottom Logged Interval	4525
Top Log Interval	3600
Casing Driller	8.625 @ 272
Casing Logger	262
Bit Size	7.875
Type Fluid in Hole	Chemical
Salinity, ppm CL	3,200
Density / Viscosity	9.4 45
pH / Fluid Loss	9.5 10.0
Source of Sample	Flowline
Rm @ Meas. Temp	1.1 @ 67
Rmf @ Meas. Temp	.83 @ 67
Rmc @ Meas. Temp	1.49 @ 67
Source of Rmf / Rmc	Charts
Rm @ BHT	.61 @ 121
Operating Rig Time	4 Hours
Max Rec. Temp. F	121
Equipment Number	17
Location	Hays
Recorded By	C. Desaire
Witnessed By	Pat Deenihan

<<< Fold Here >>>

All interpretations are opinions based on inferences from electrical or other measurements and we cannot and do not guarantee the accuracy or correctness of any interpretation, and we shall not, except in the case of gross or willful negligence on our part, be liable or responsible for any loss, costs, damages, or expenses incurred or sustained by anyone resulting from any interpretation made by any of our officers, agents or employees. These interpretations are also subject to our general terms and conditions set out in our current Price Schedule.

Comments

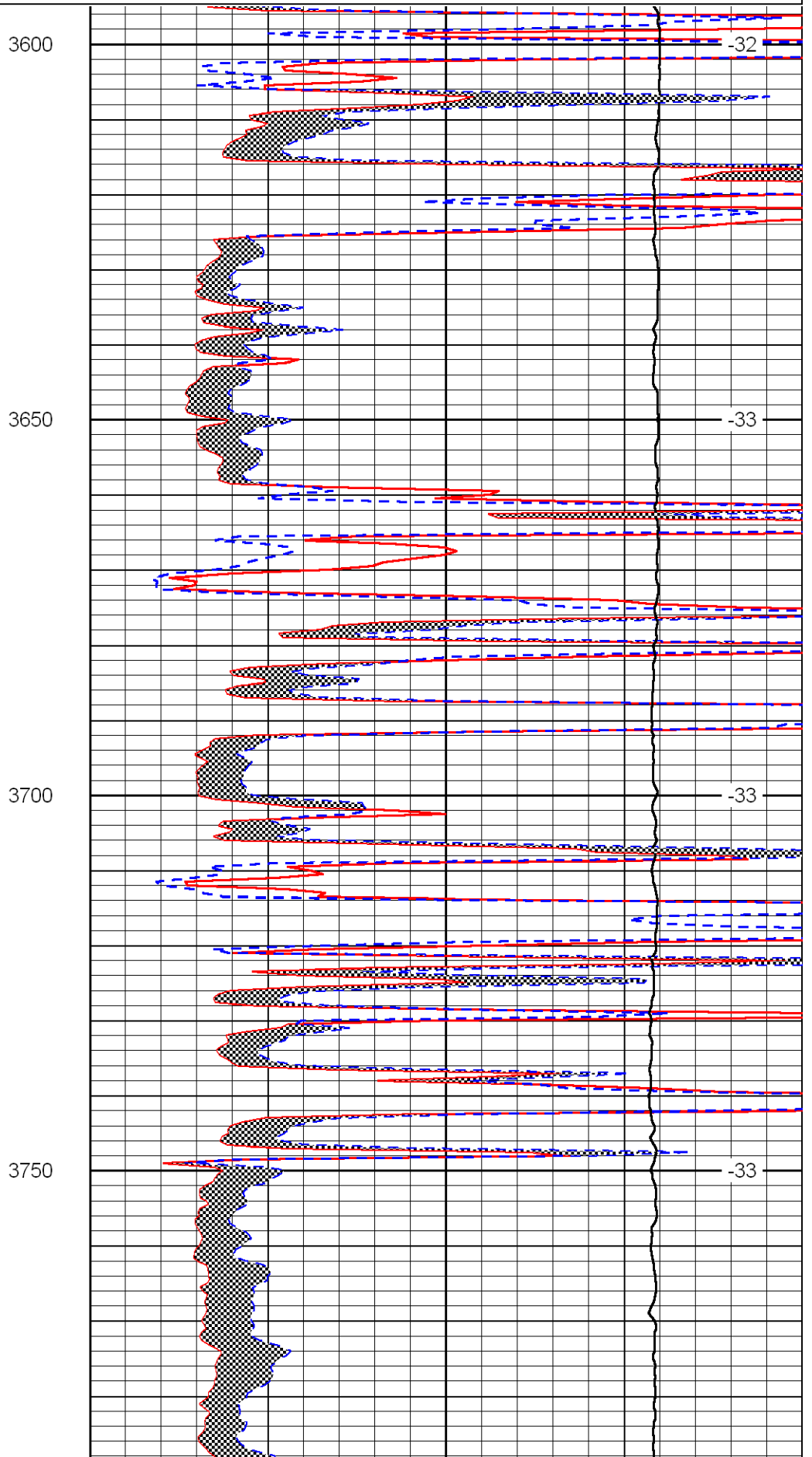
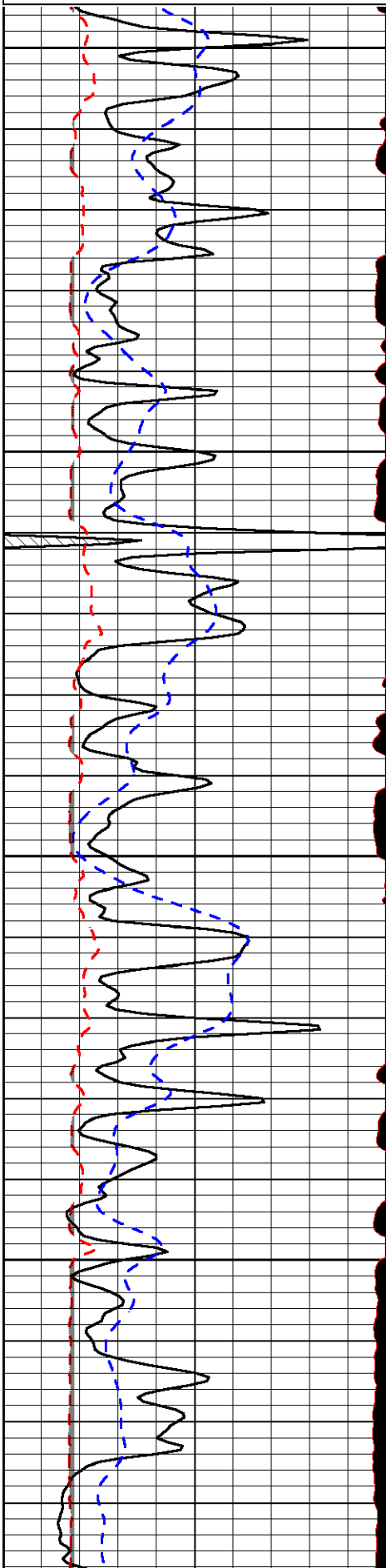
Thank you for using Log-Tech, Inc.
 (785) 625-3858

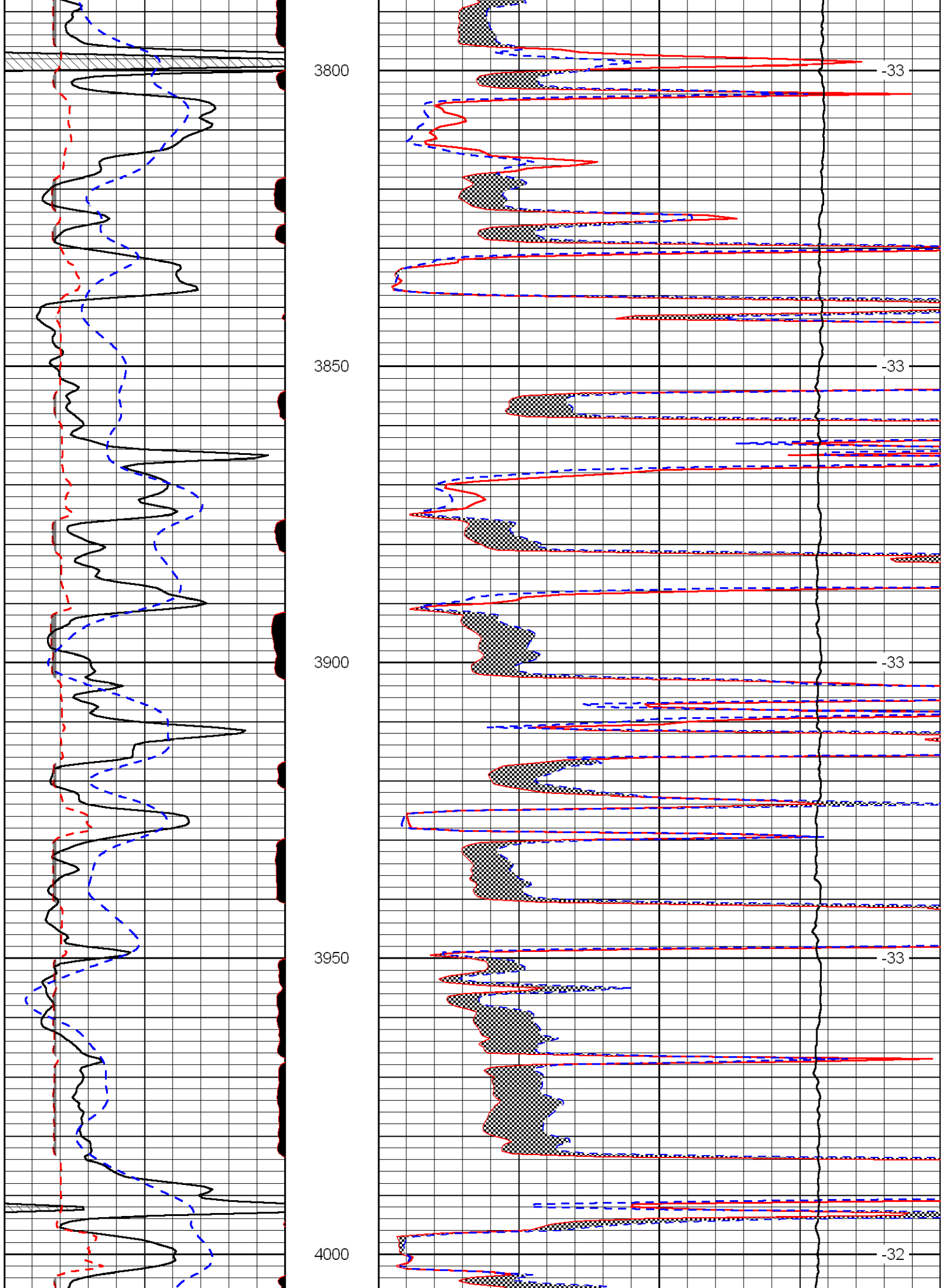
Arnold KS, 3 W to H Rd,
 4 N, 1 W, 1 N, 1/2 W, N Into

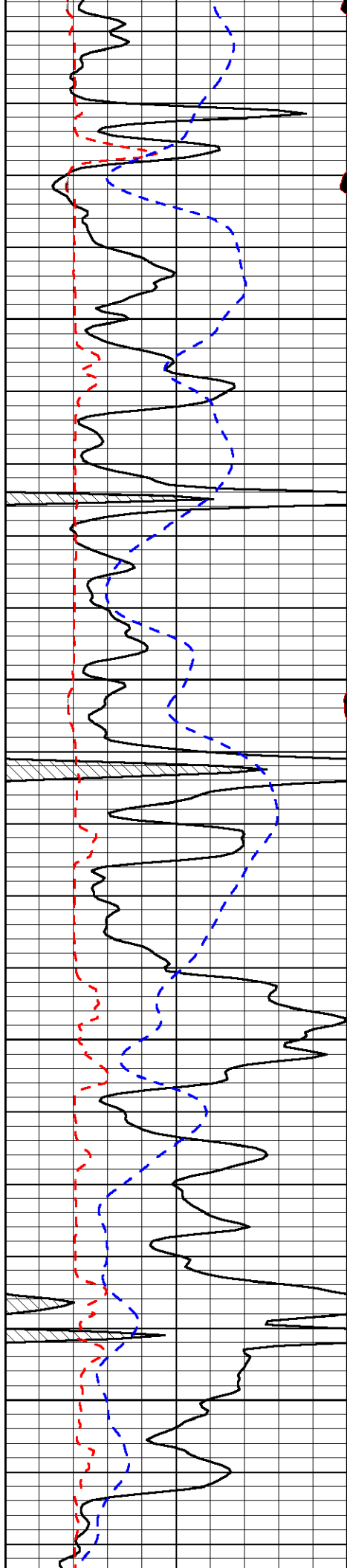
Database File: culbreathhd.db
 Dataset Pathname: dil/culstk
 Presentation Format: micro
 Dataset Creation: Thu Sep 27 01:48:52 2012
 Charted by: Depth in Feet scaled 1:240

0	Gamma Ray	150
6	MCAL (GAPI)	16
2.875	Mud Cake (GAPI)	7.875
-200	SP	0

0	Micro Inverse 1 X 1	40
0	Micro Normal 2"	40
10000	Line Weight	0
		LSPD





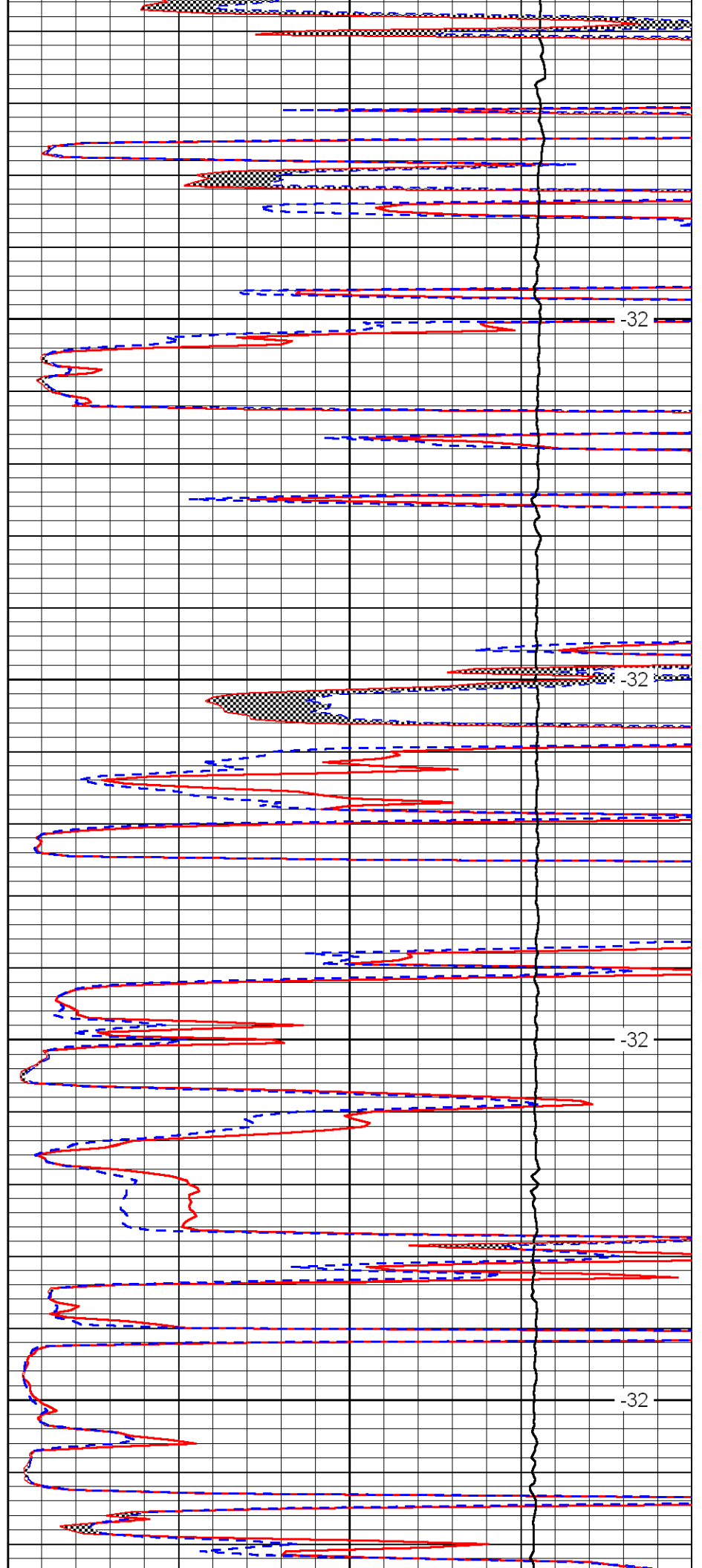


4050

4100

4150

4200

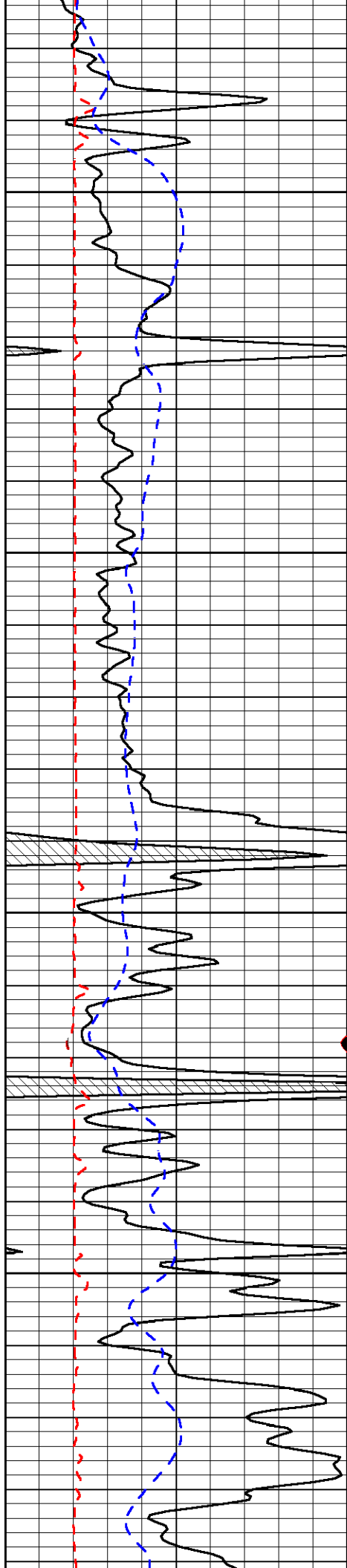


-32

-32

-32

-32

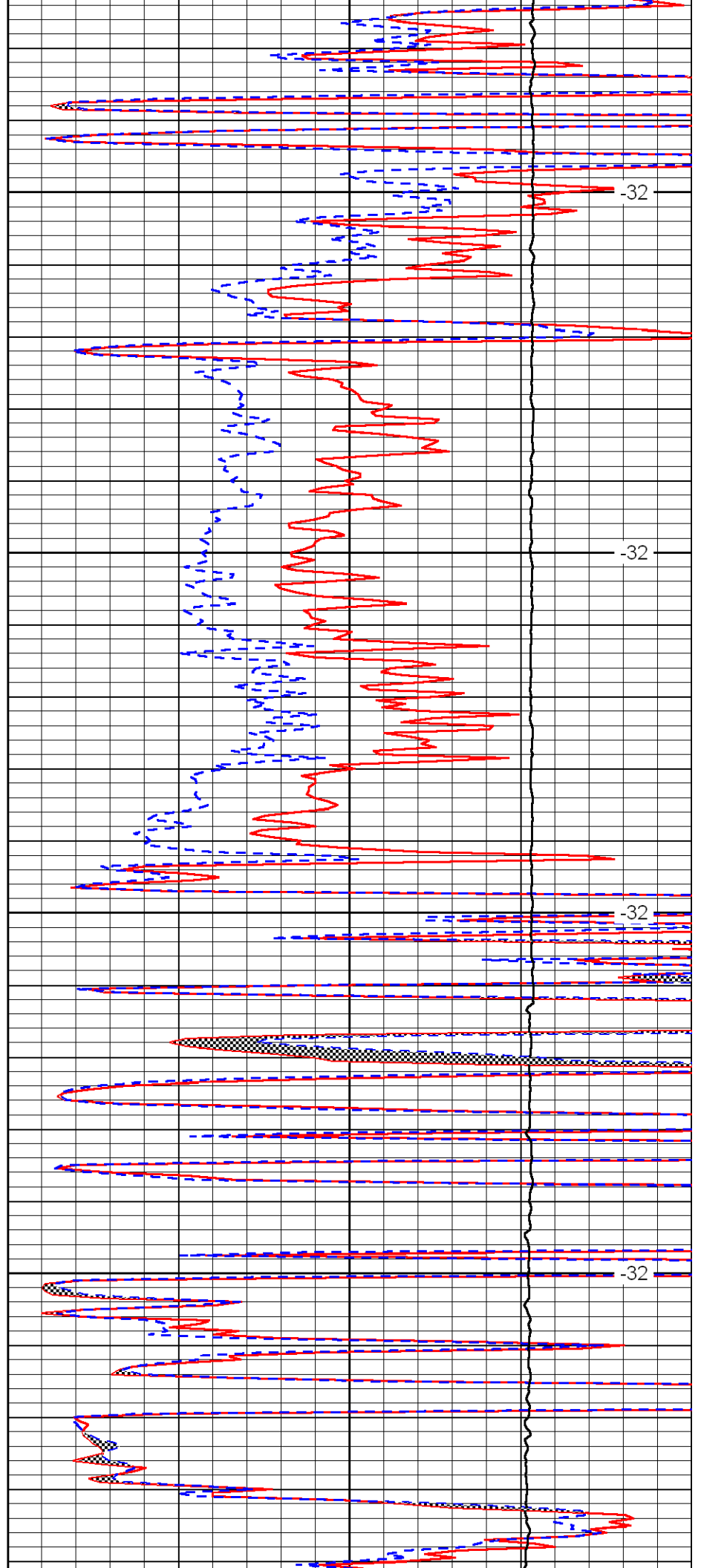


4250

4300

4350

4400

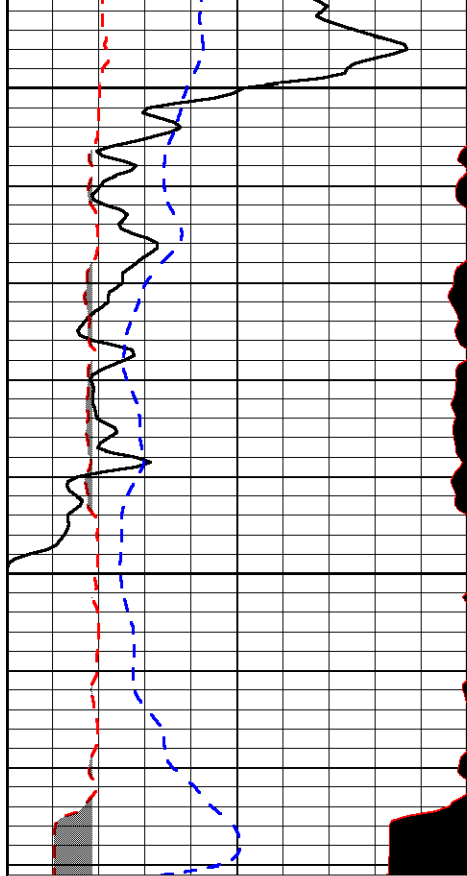


-32

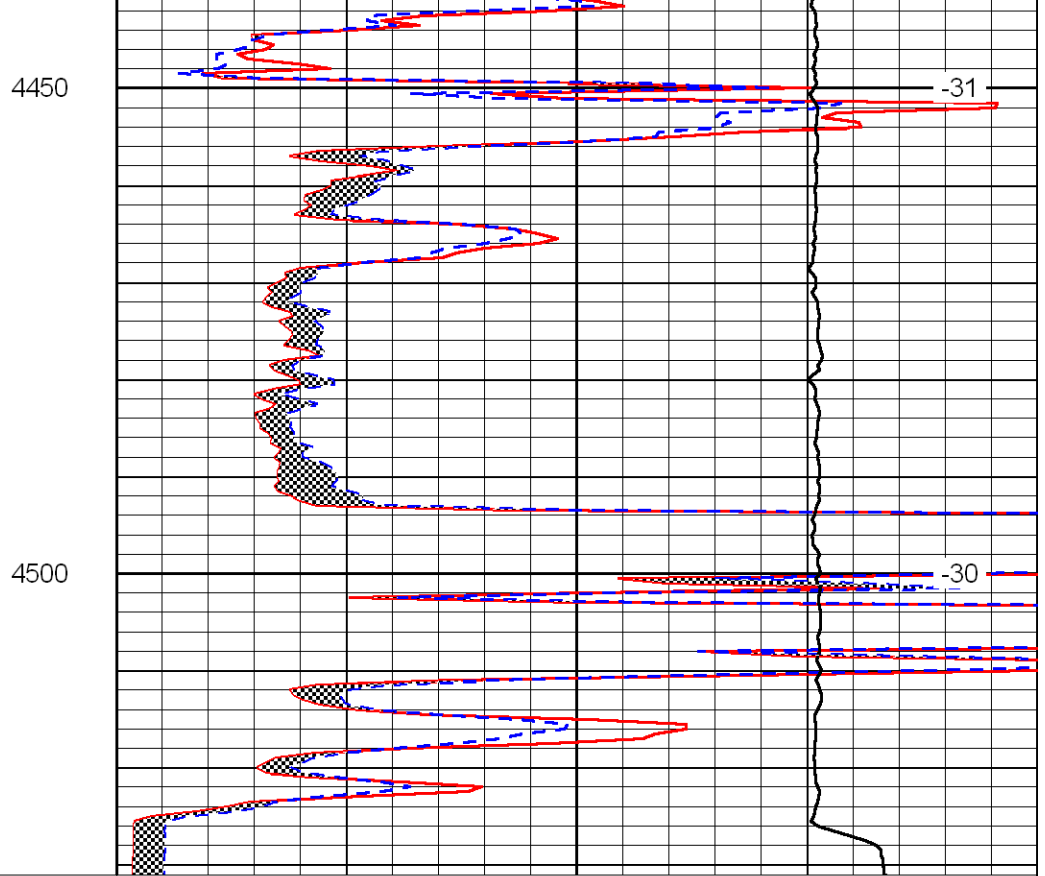
-32

-32

-32



0	Gamma Ray	150
6	MCAL (GAPI)	16
2.875	Mud Cake (GAPI)	7.875
-200	SP	0



0	Micro Inverse 1 X 1	40
0	Micro Normal 2''	40
10000	Line Weight	0

LSPD