



**SUPERIOR**  
Hays,  
Kansas

**SONIC**  
LOG

Company O'BRIEN RESOURCES, LLC.  
Well HAYES 27 #1  
Field WILDCAT  
County GOVE  
State KANSAS

Company O'BRIEN RESOURCES, LLC.  
Well HAYES 27 #1  
Field WILDCAT  
County GOVE State KANSAS

Location: 330' FSL & 1074' FWL  
API #: 15-063-21986-0000  
Permanent Datum GROUND LEVEL Elevation 2750  
Log Measured From KELLY BUSHING 5' A.G.L.  
Drilling Measured From KELLY BUSHING  
SEC 27 TWP 14S RGE 30W  
Other Services  
CDL/CNL/PE  
DIL/MEL  
Elevation  
K.B. 2755  
D.F. 2753  
G.L. 2750

Date	7/7/12
Run Number	TWO
Depth Driller	4625
Depth Logger	4626
Bottom Logged Interval	4616
Top Log Interval	200
Casing Driller	8 5/8" @ 220
Casing Logger	218
Bit Size	7 7/8
Type Fluid in Hole	CHEMICAL MUD
Density / Viscosity	9.3/60
pH / Fluid Loss	9.0/8.4
Source of Sample	FLOWLINE
Rim @ Meas. Temp	1.0 @ 89F
Rmf @ Meas. Temp	.75 @ 89F
Rmc @ Meas. Temp	1.20 @ 89F
Source of Rmf / Rmc	MEASURED
Rim @ BHT	.72 @ 122F
Time Circulation Stopped	2 HOURS
Time Logger on Bottom	
Maximum Recorded Temperature	122F
Equipment Number	680
Location	HAYS, KS.
Recorded By	JASON CAPPELLUCCI
Witnessed By	SEAN DEENIHAN

<<< Fold Here >>>

All interpretations are opinions based on inferences from electrical or other measurements and we cannot and do not guarantee the accuracy or correctness of any interpretation, and we shall not, except in the case of gross or willful negligence on our part, be liable or responsible for any loss, costs, damages, or expenses incurred or sustained by anyone resulting from any interpretation made by any of our officers, agents or employees. These interpretations are also subject to our general terms and conditions set out in our current Price Schedule.

**Comments**

THANK YOU FOR USING SUPERIOR WELL SERVICE (785) 628-6395  
DIRECTIONS  
GOVE, KS. - 10 S. TO RD I. - 9 W. - 1 S. - E. INTO

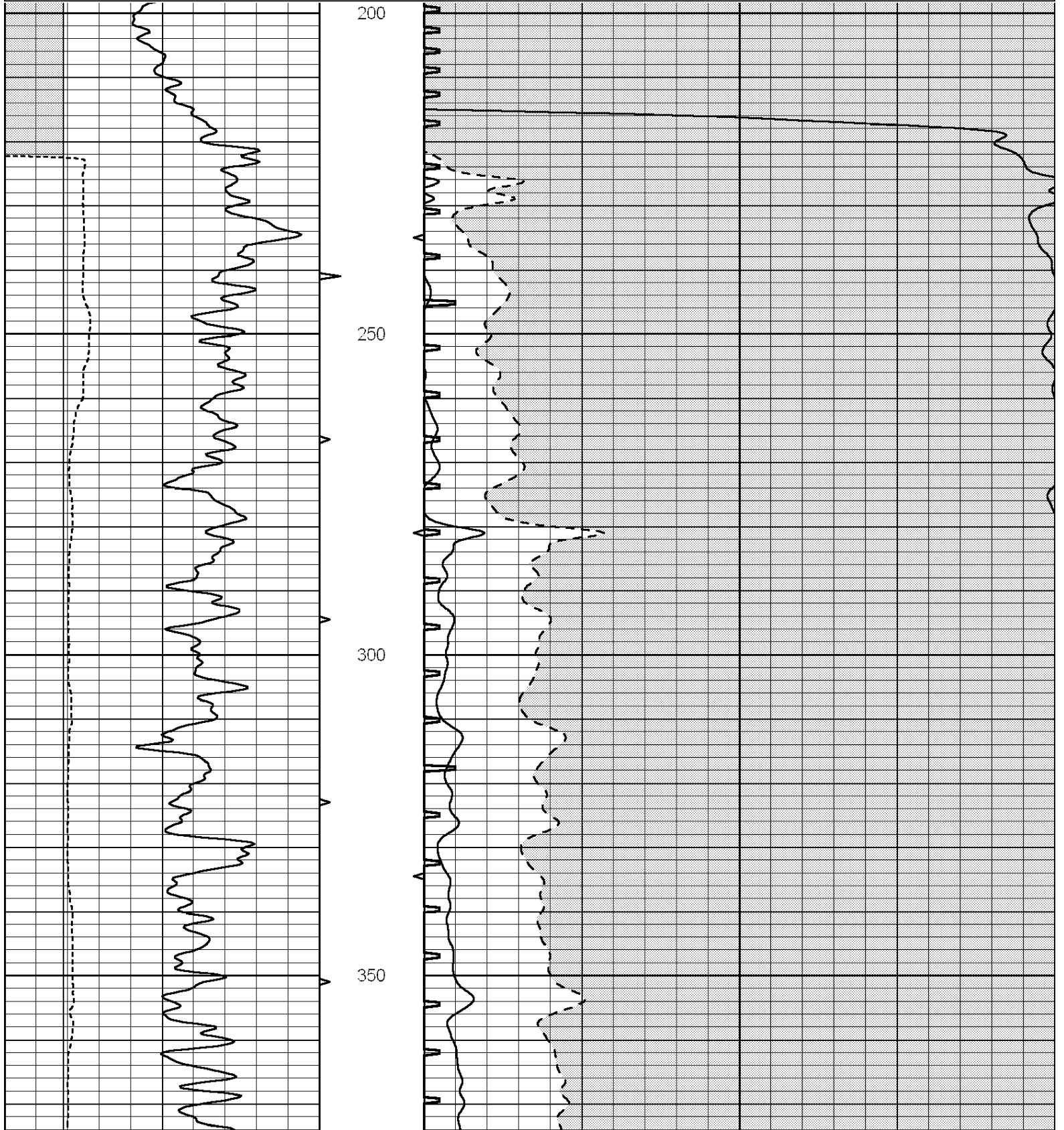


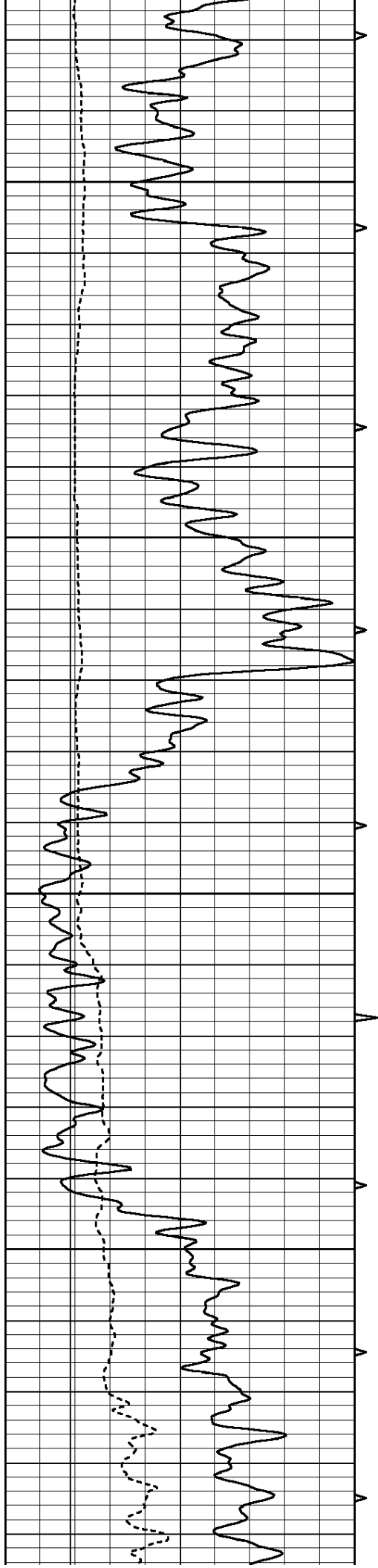
**SUPERIOR**  
Hays,  
Kansas

**MAIN SECTION**

Database File: 009460pe.db  
 Dataset Pathname: pass6.2  
 Presentation Format: \_slt  
 Dataset Creation: Sat Jul 07 11:06:29 2012 by Calc Open-Cased 090629  
 Charted by: Depth in Feet scaled 1:240

0	GAMMA RAY (GAPI)	150	ABHV	140	DELTA TIME (usec/ft)	40
6	CALIPER (in)	16	10 (ft3)	0	30	SONIC POROSITY (pu)
-----			TBHV	0	ITT (msec)	20
			0 (ft3)	10		



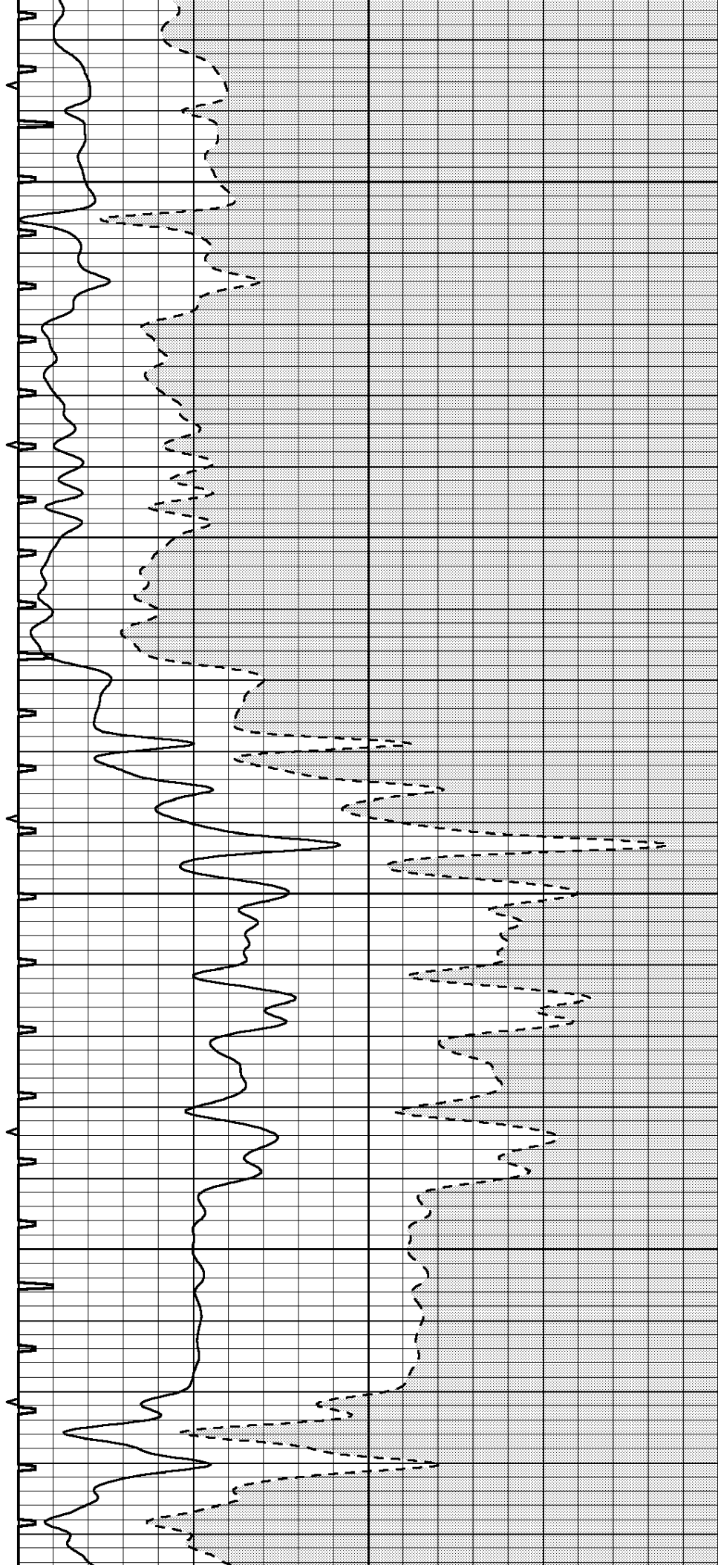


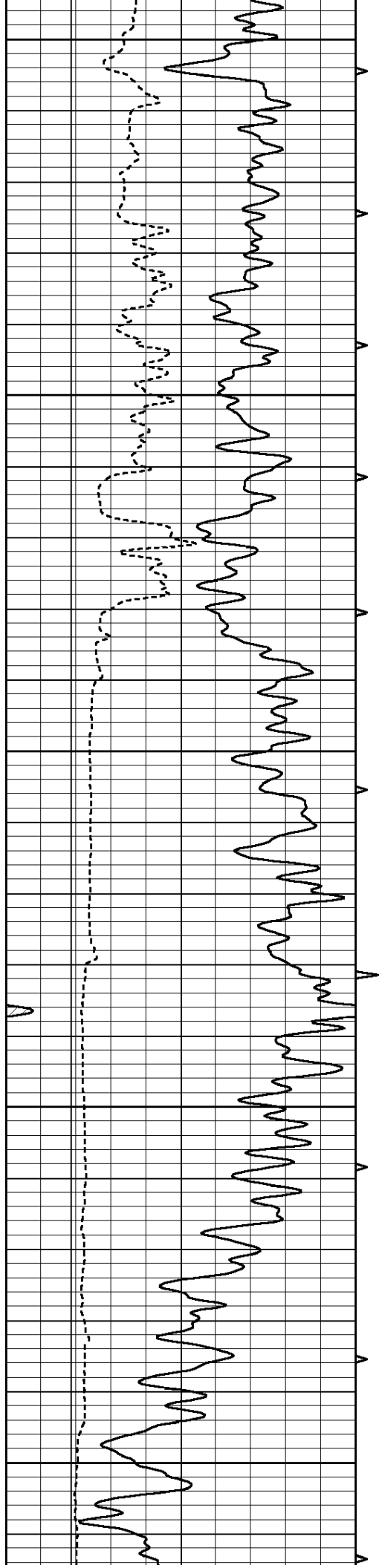
400

450

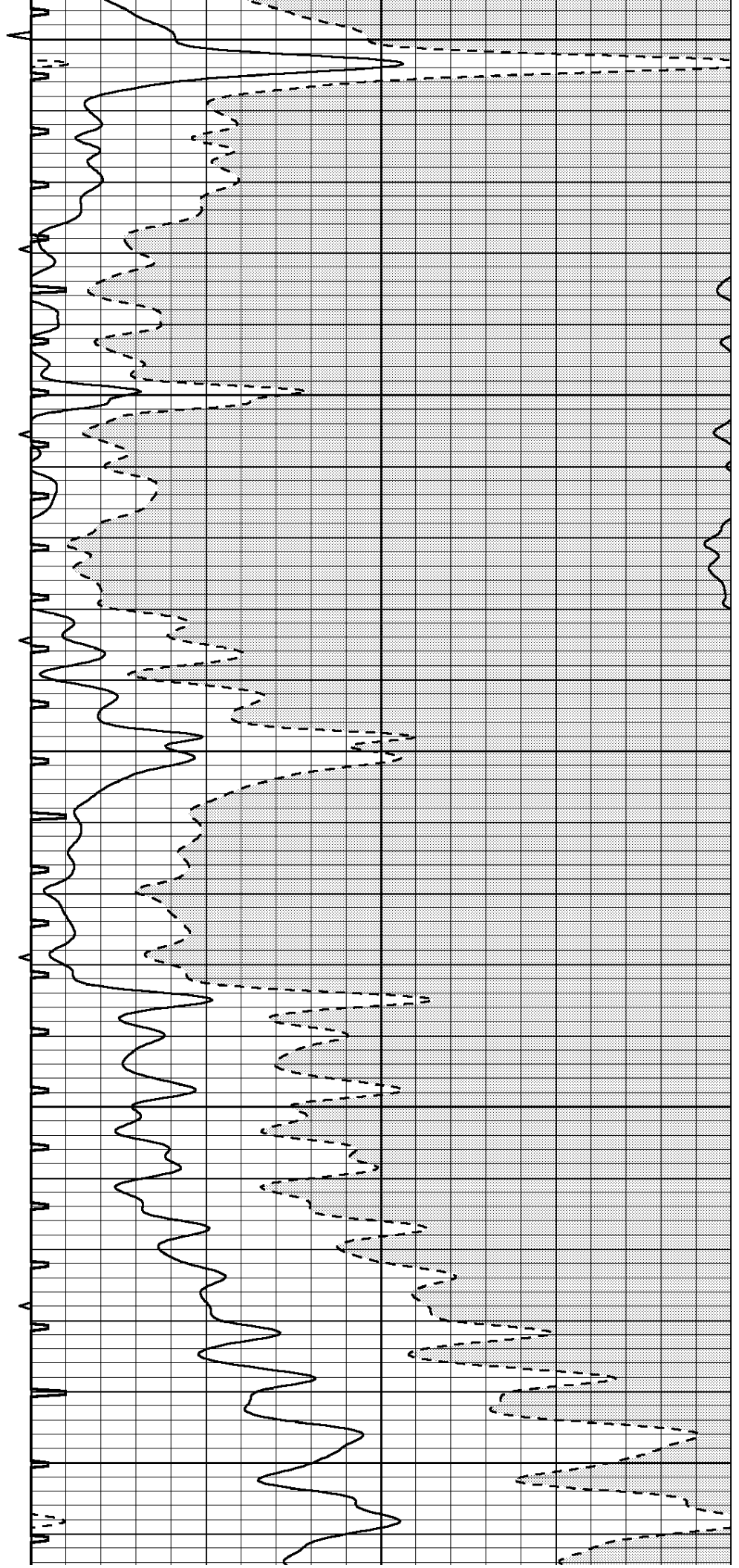
500

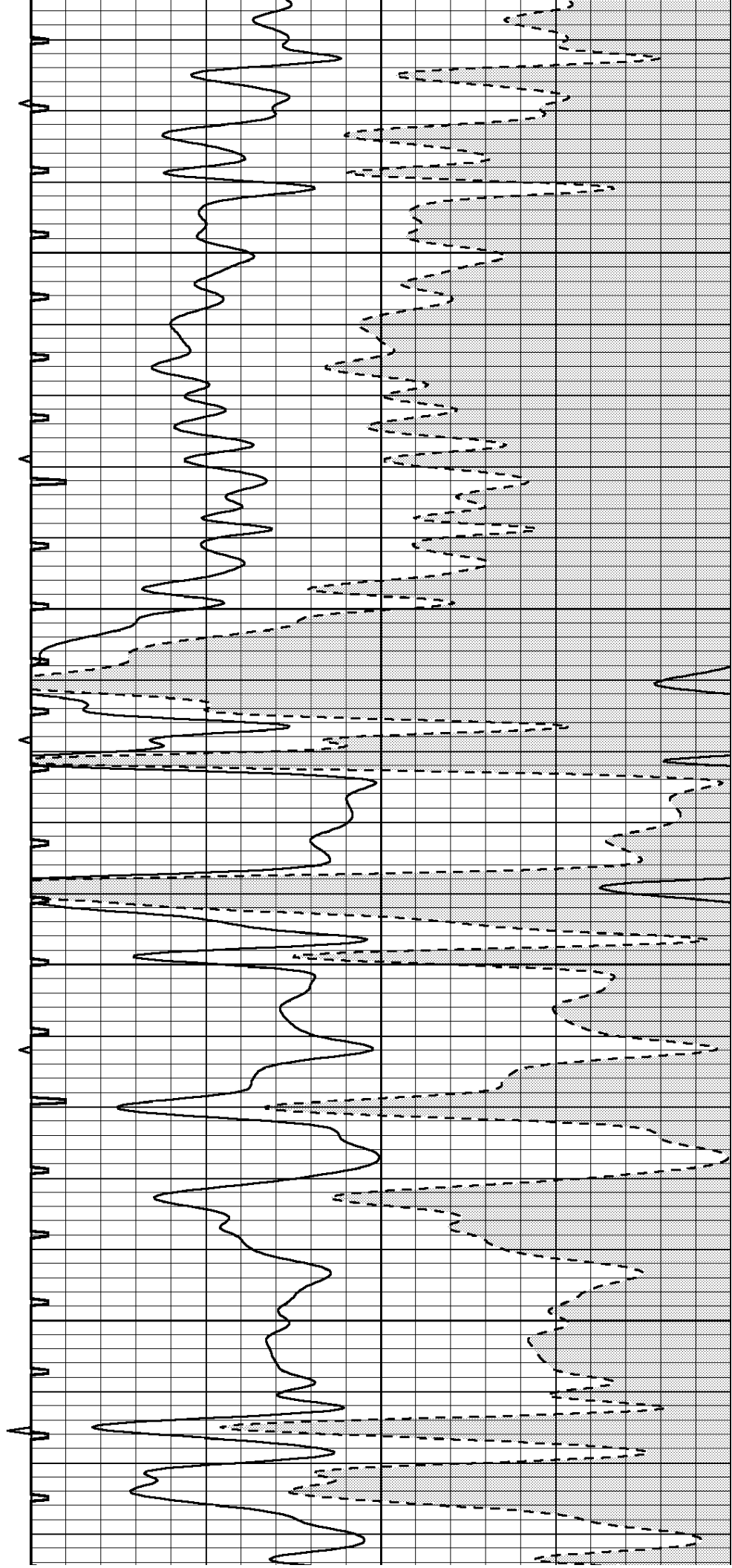
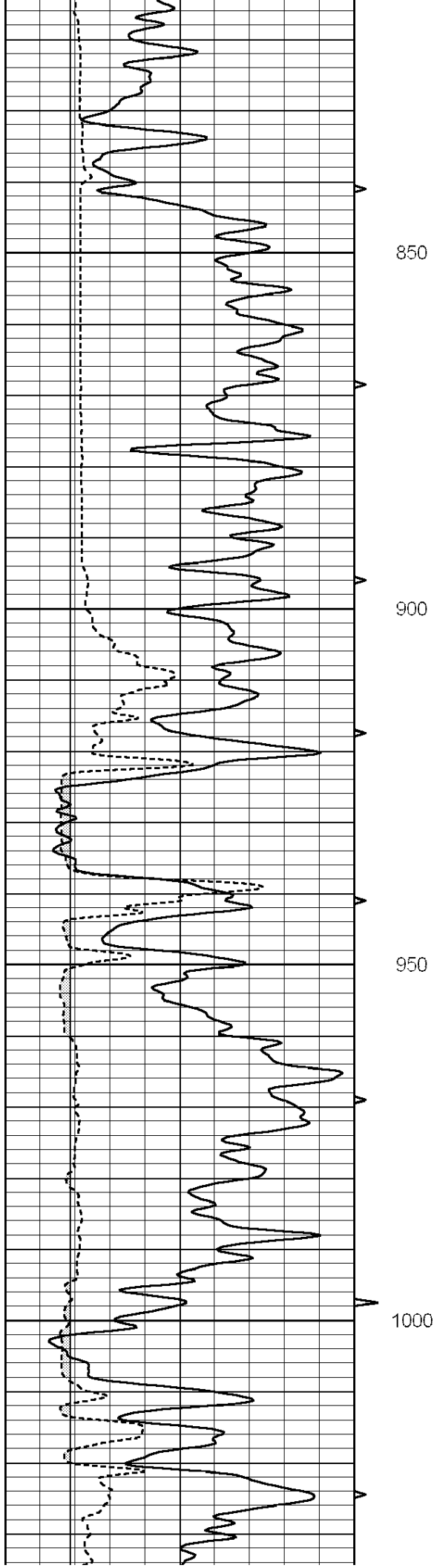
550

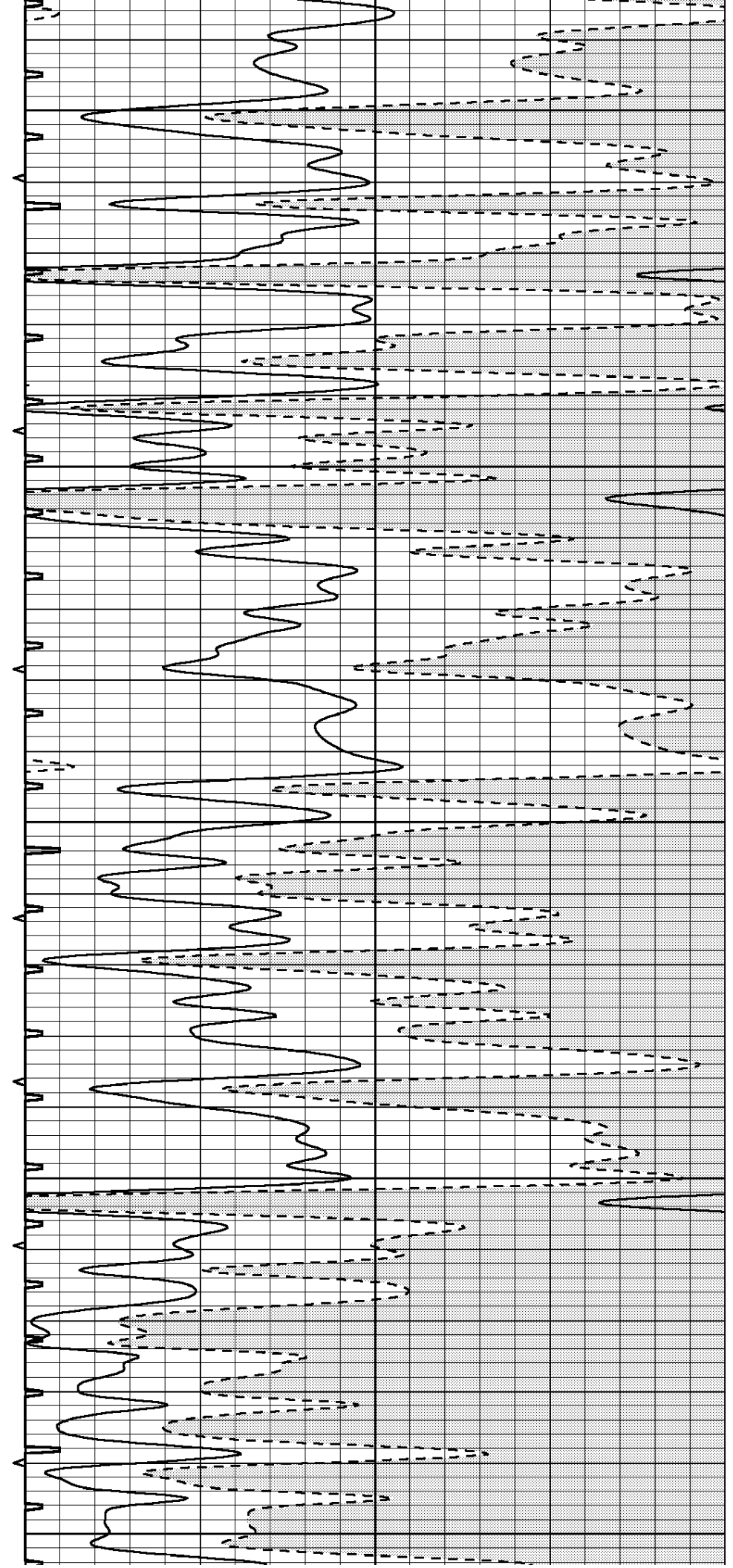
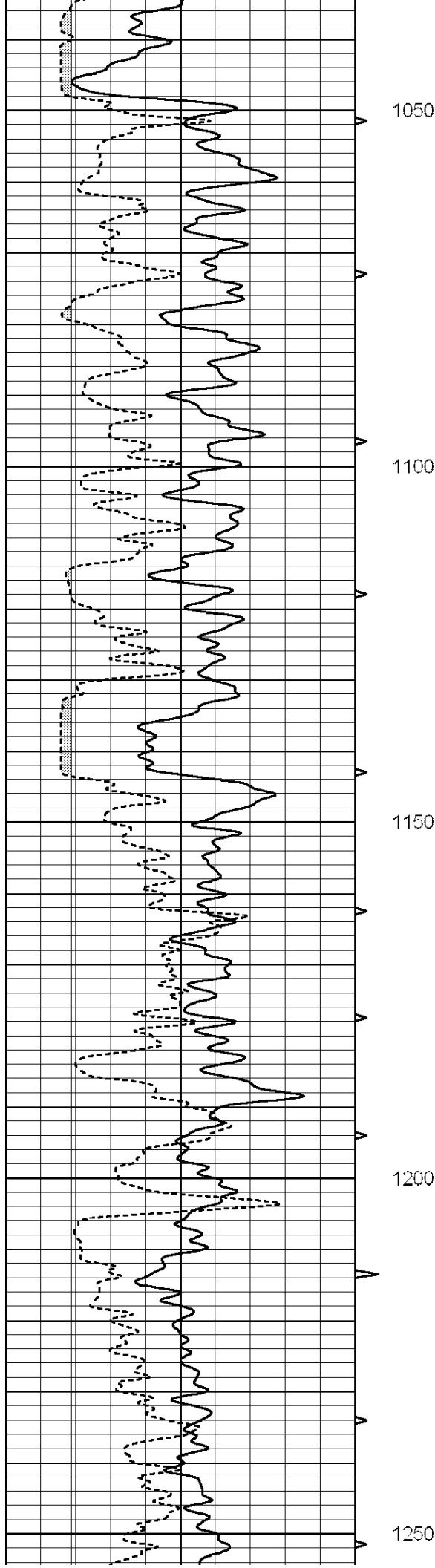


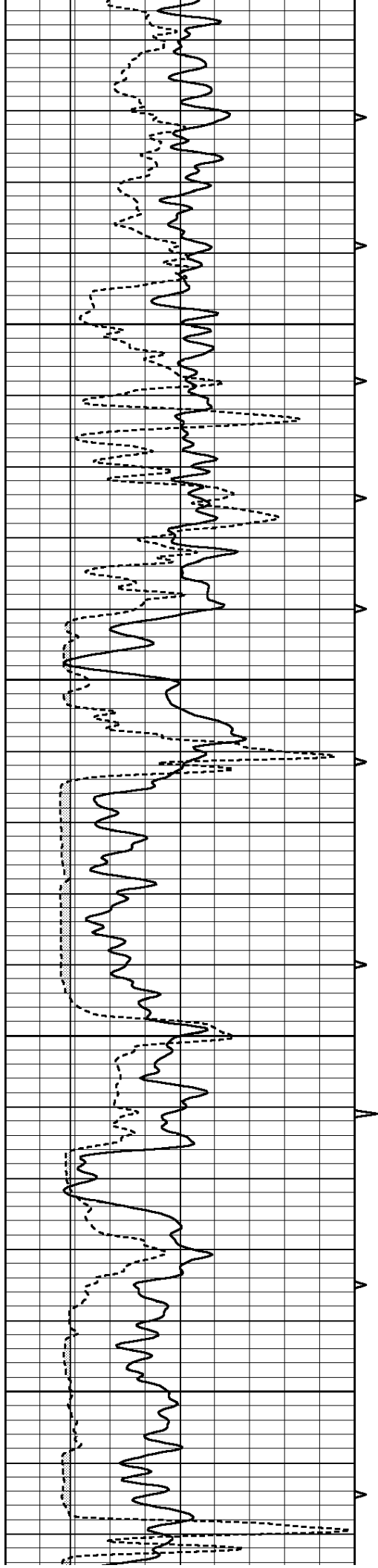


600  
650  
700  
750  
800







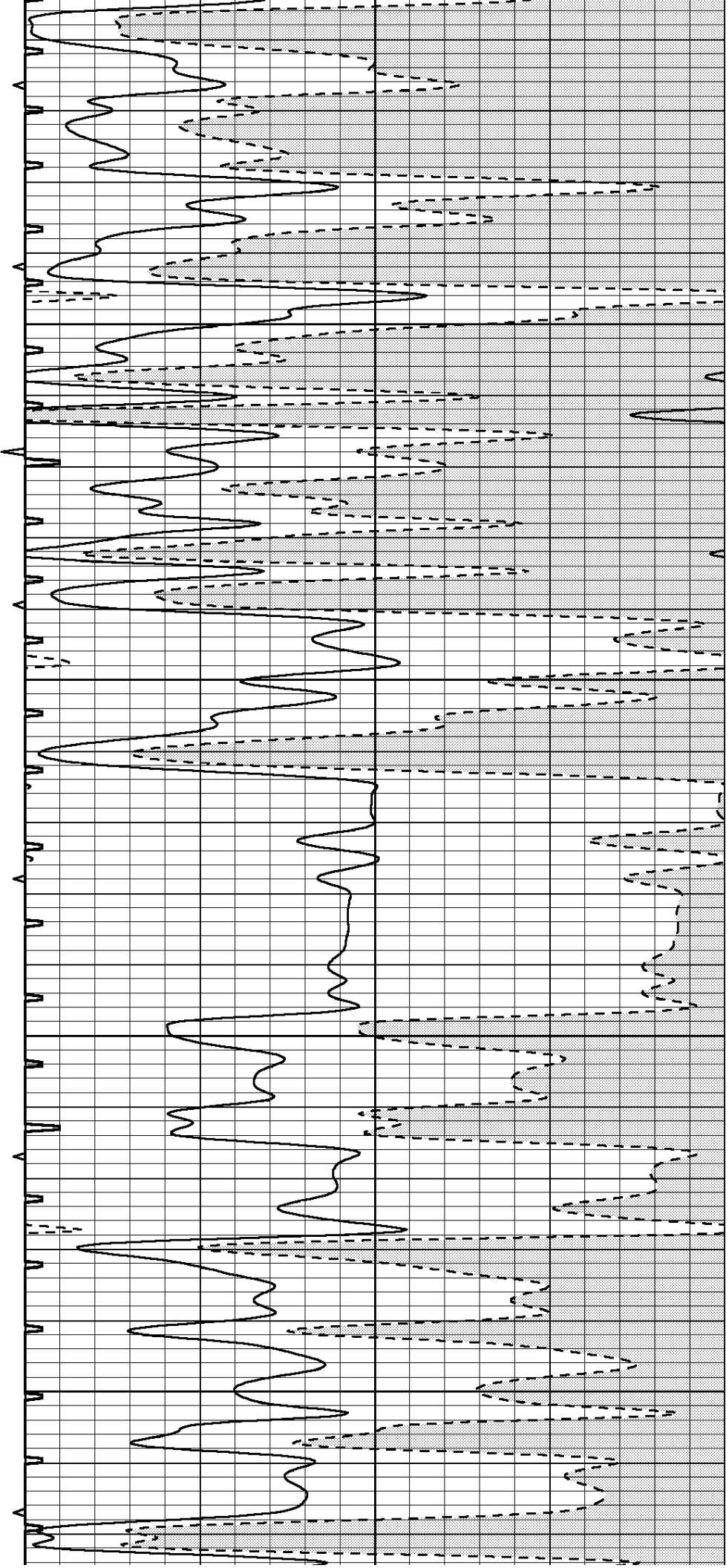


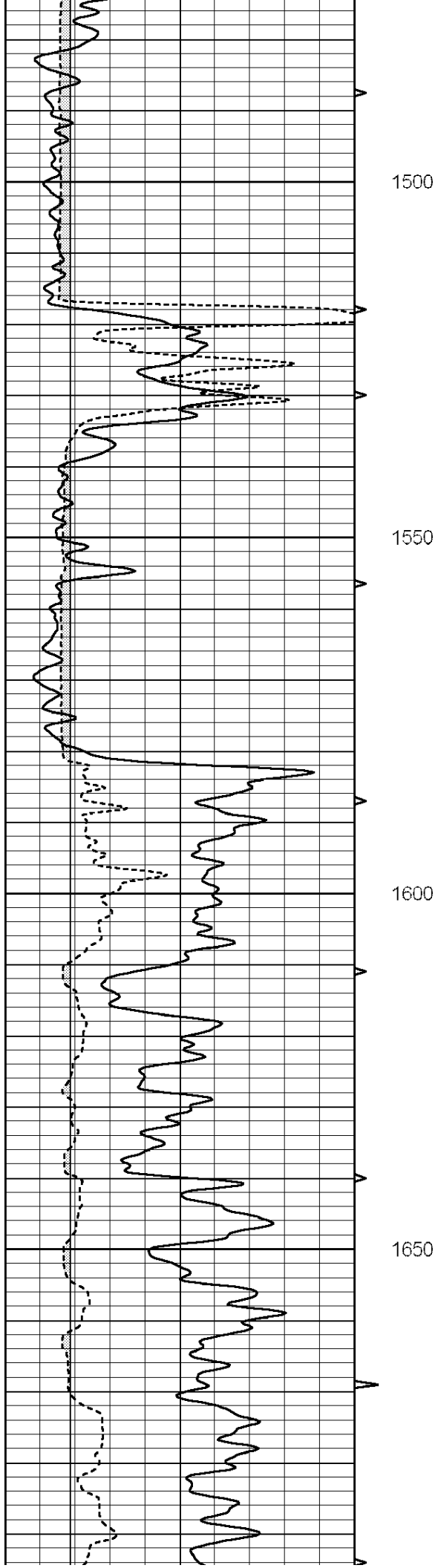
1300

1350

1400

1450



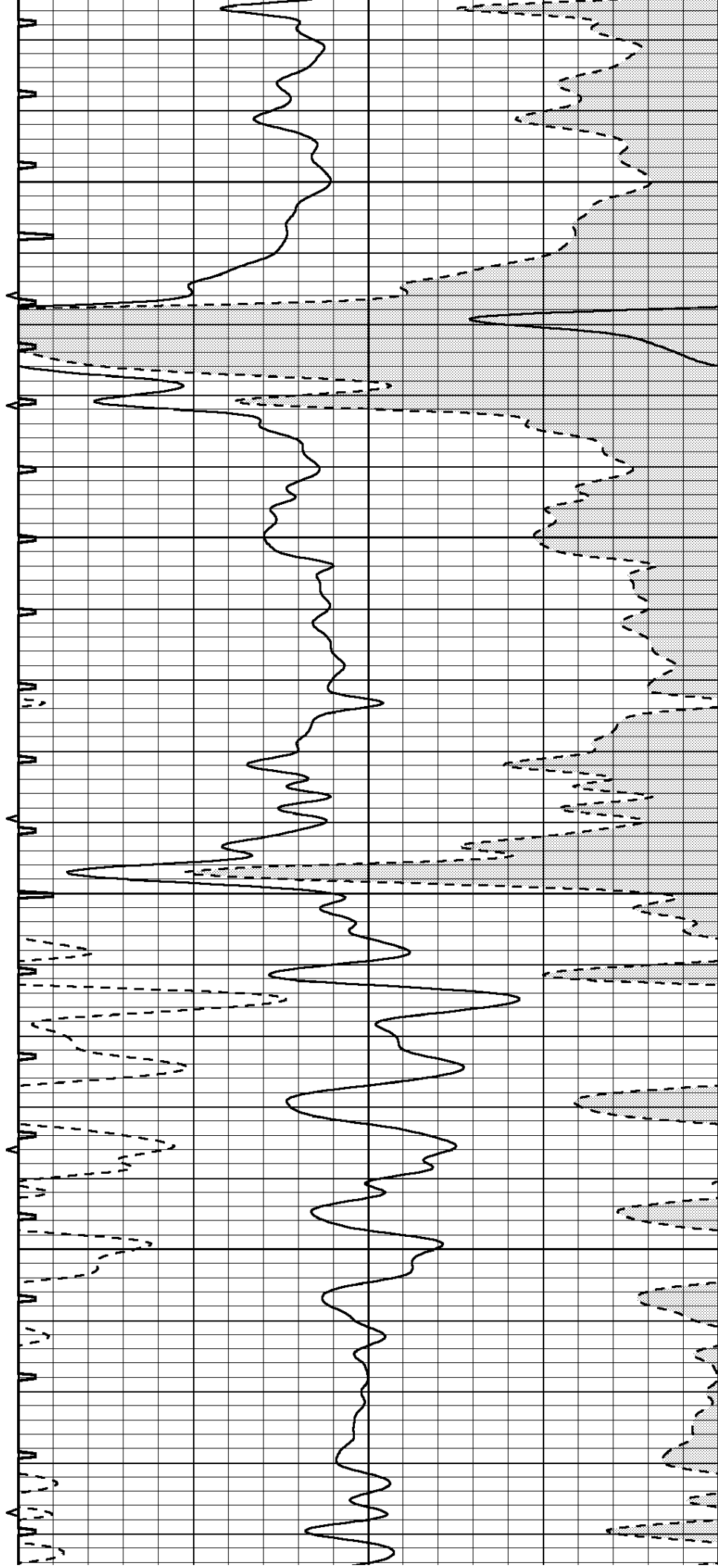


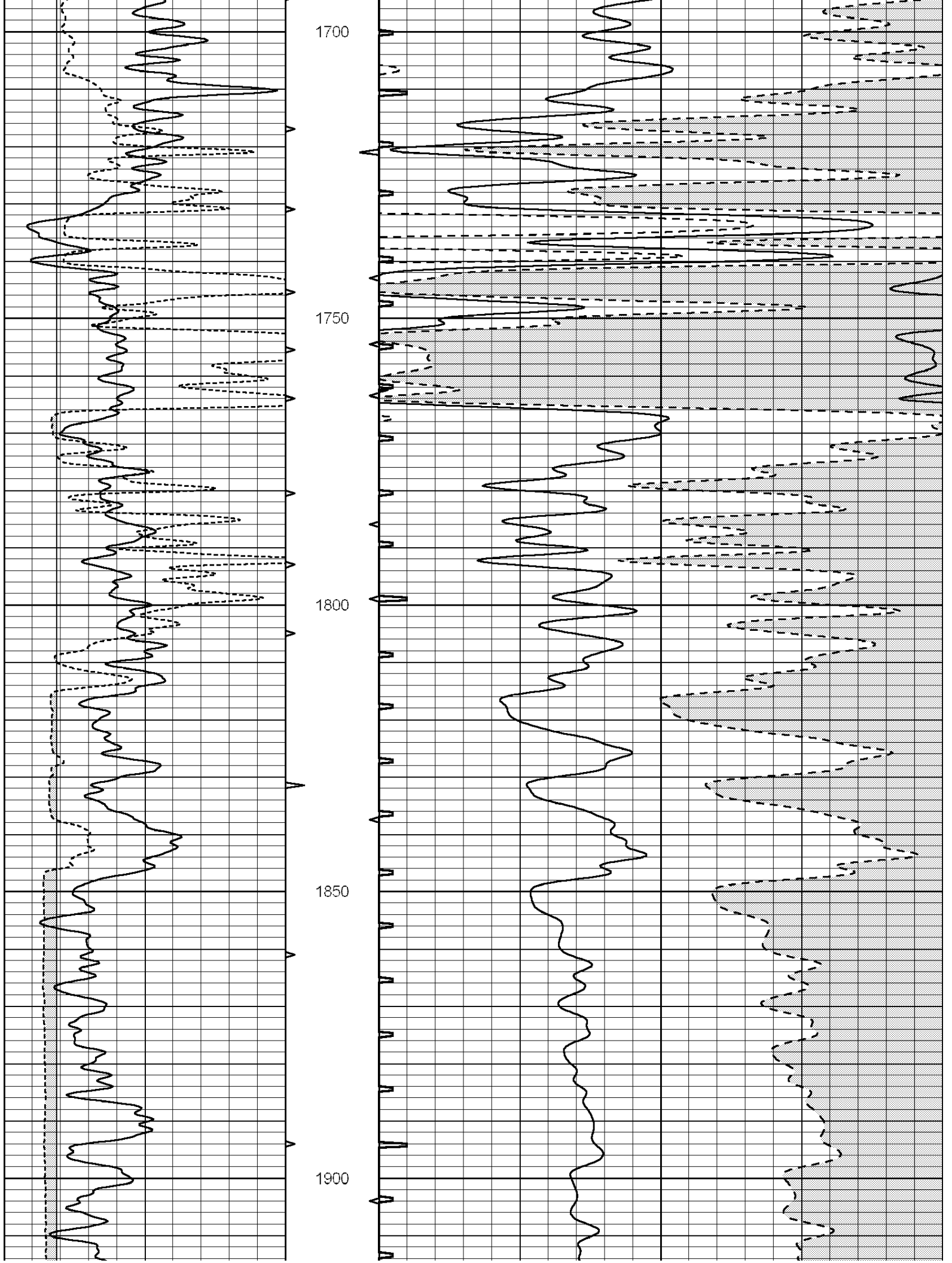
1500

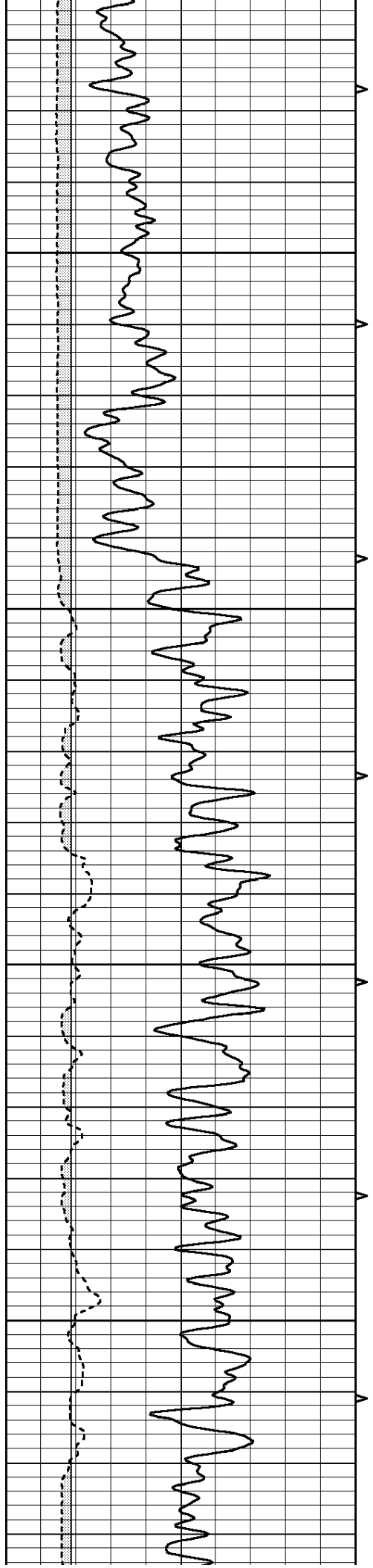
1550

1600

1650





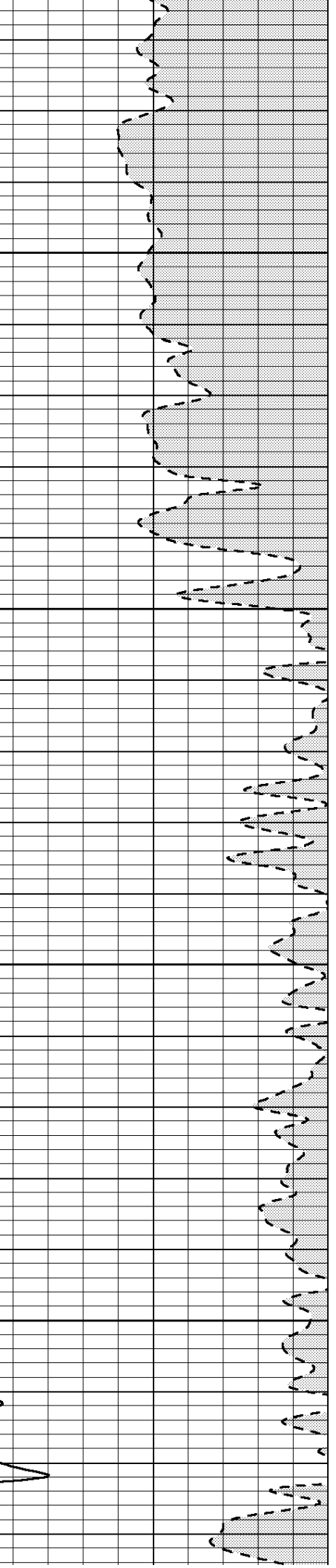
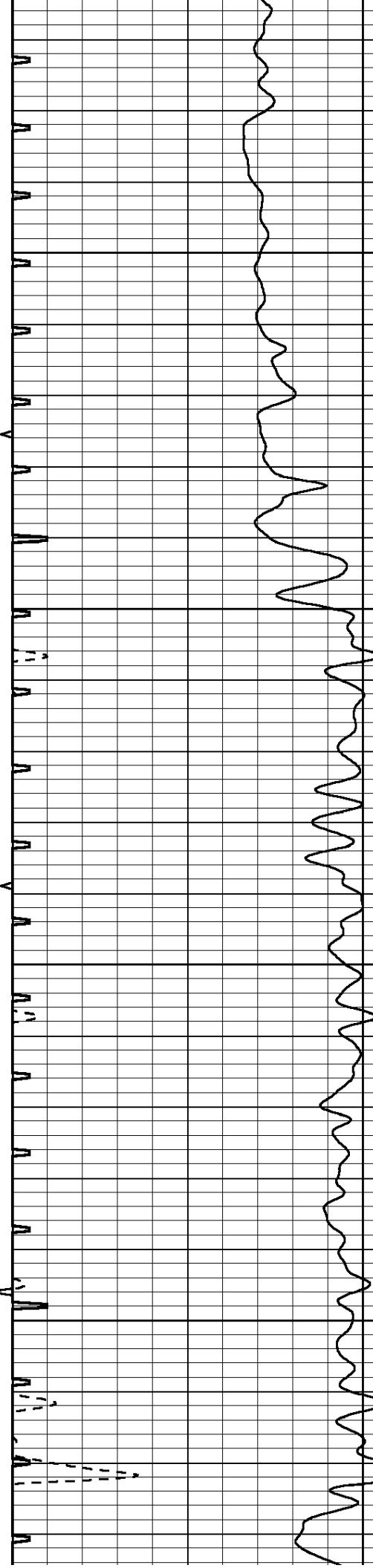


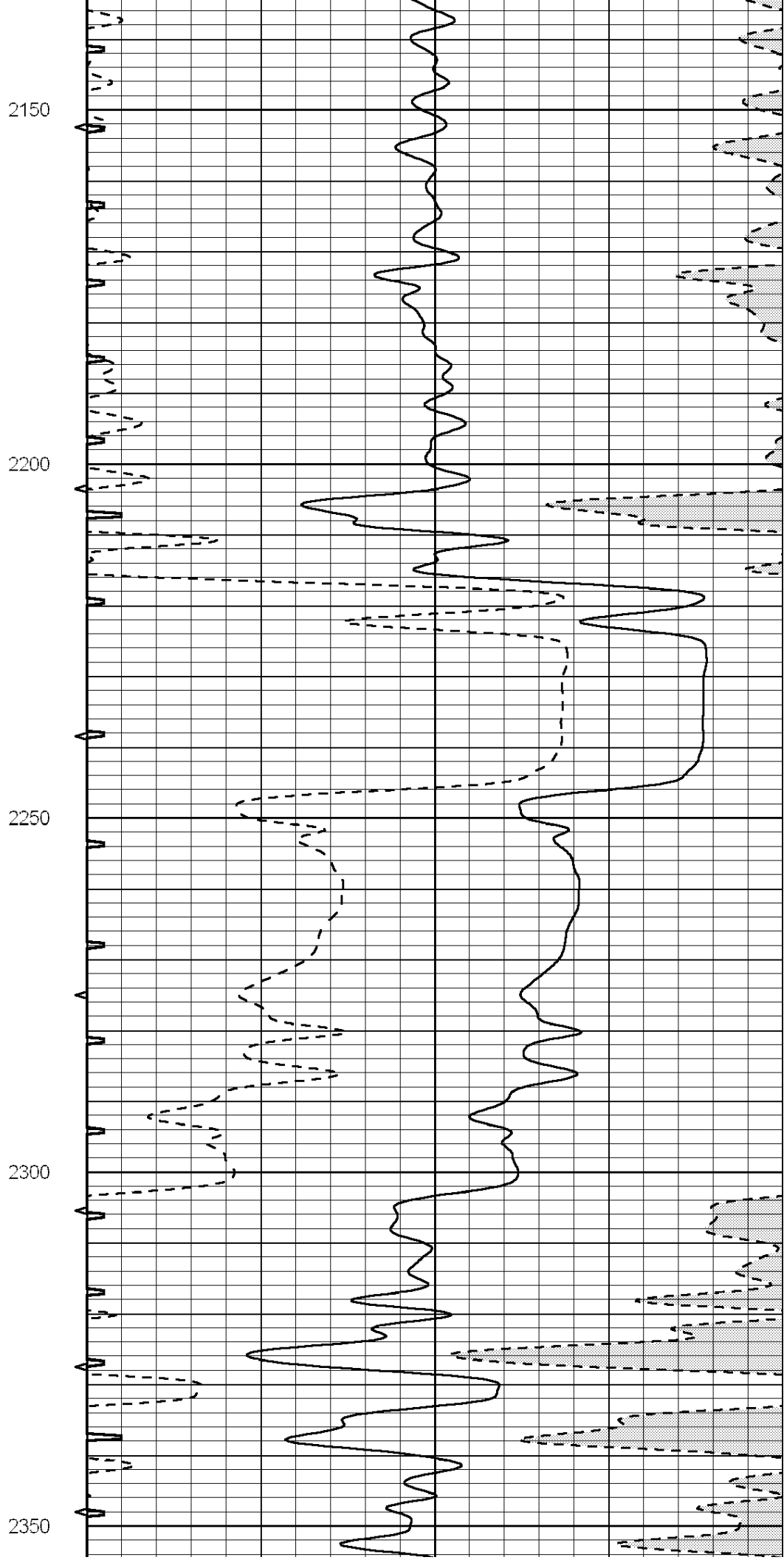
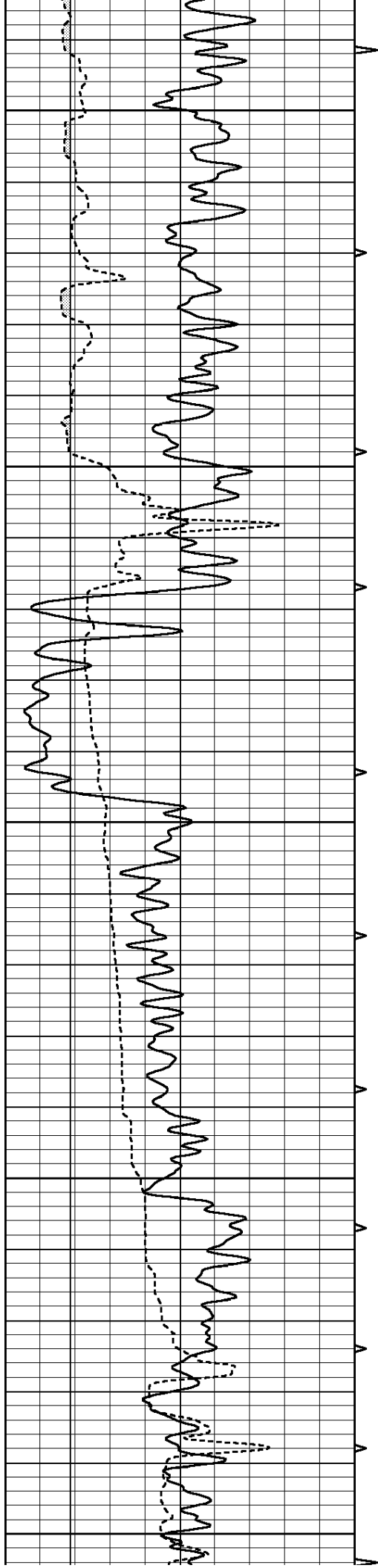
1950

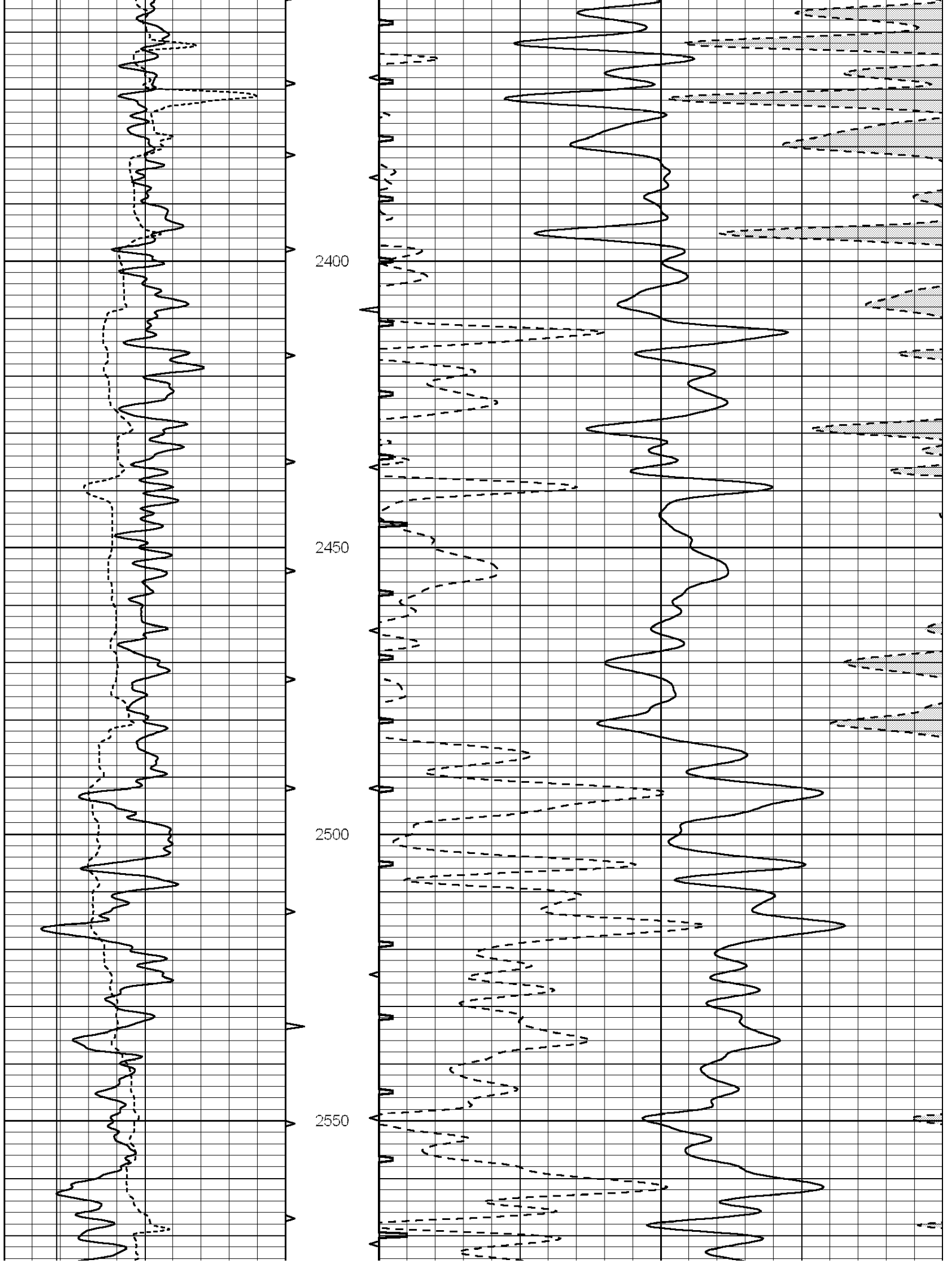
2000

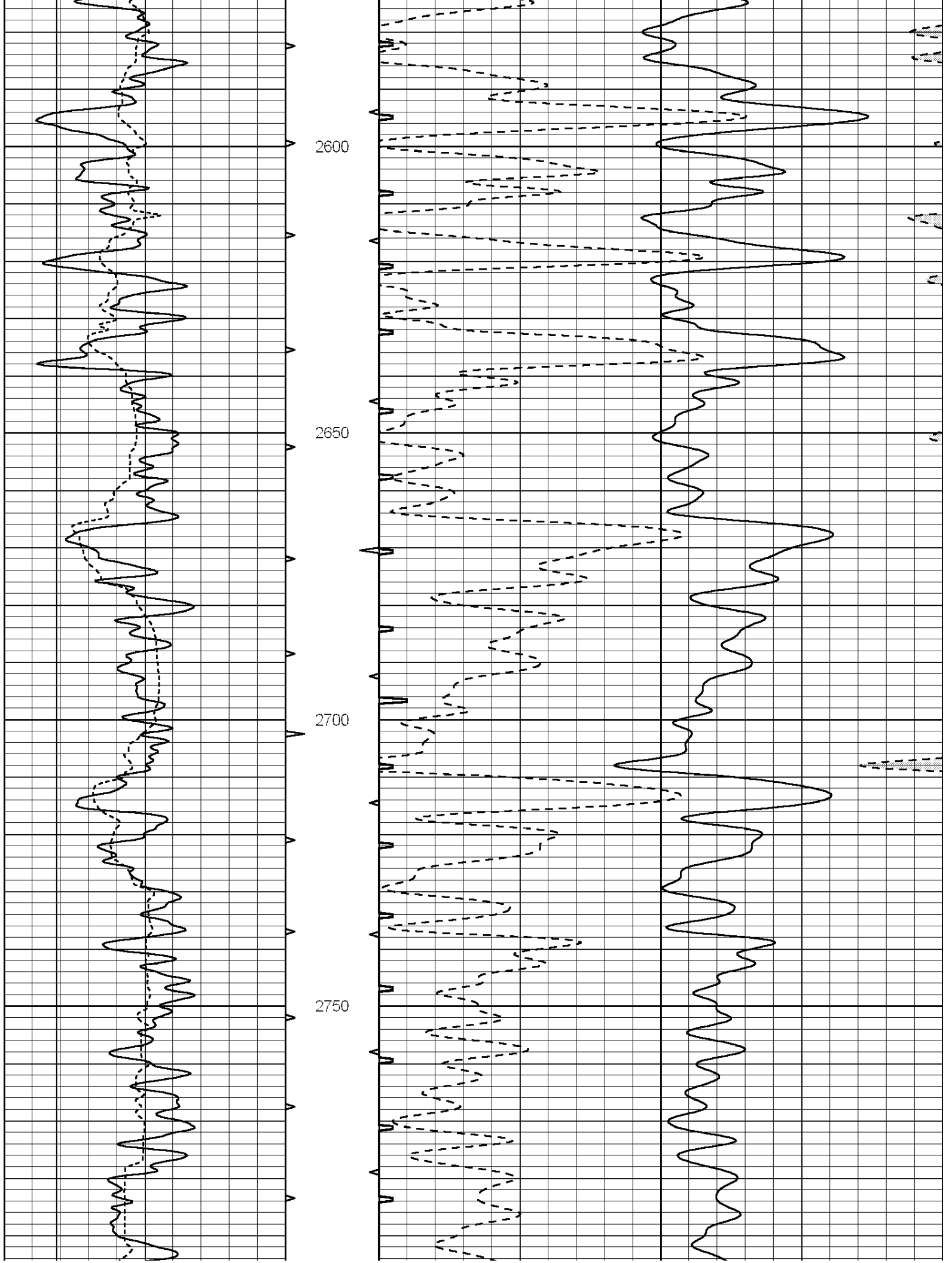
2050

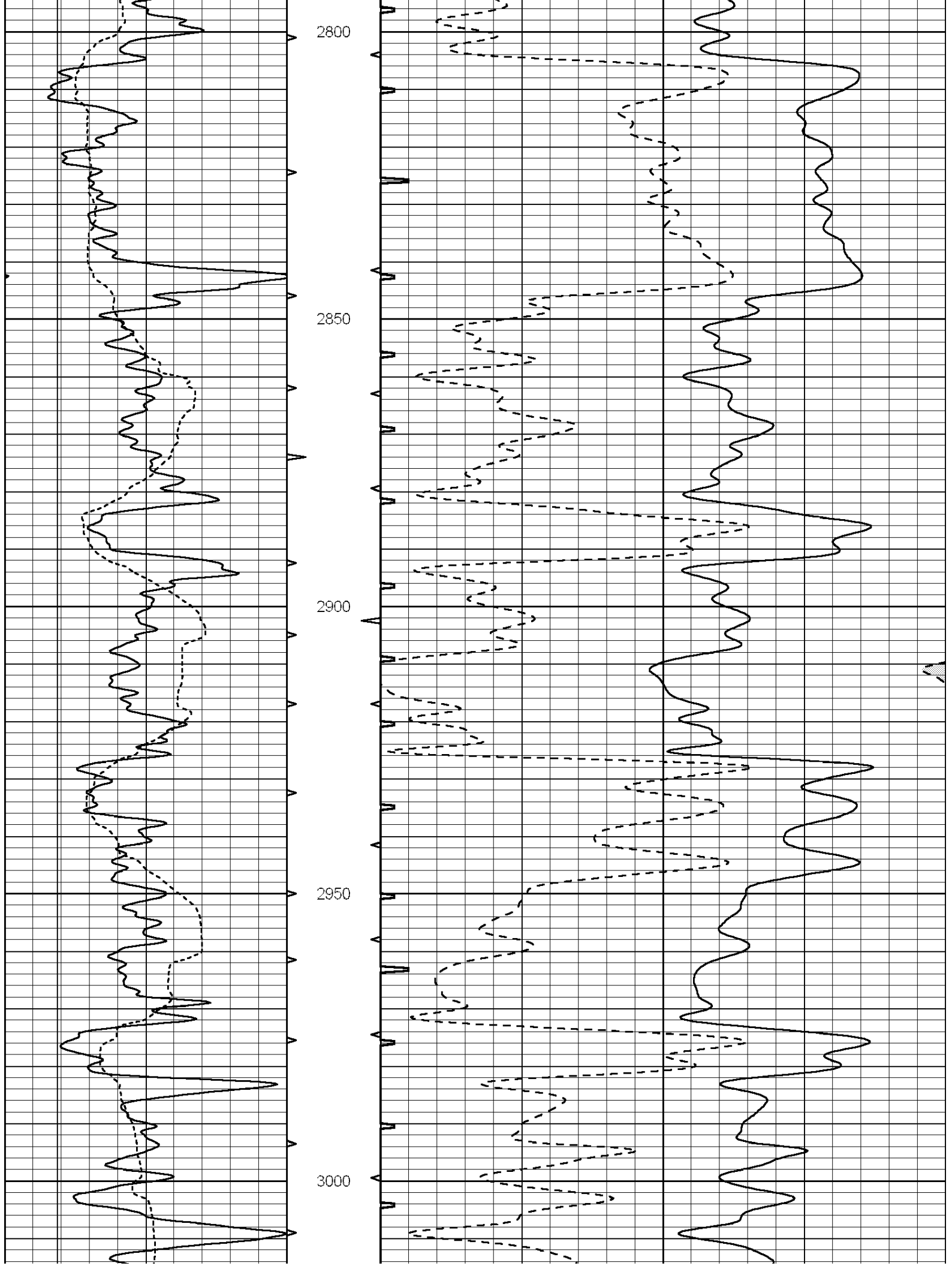
2100

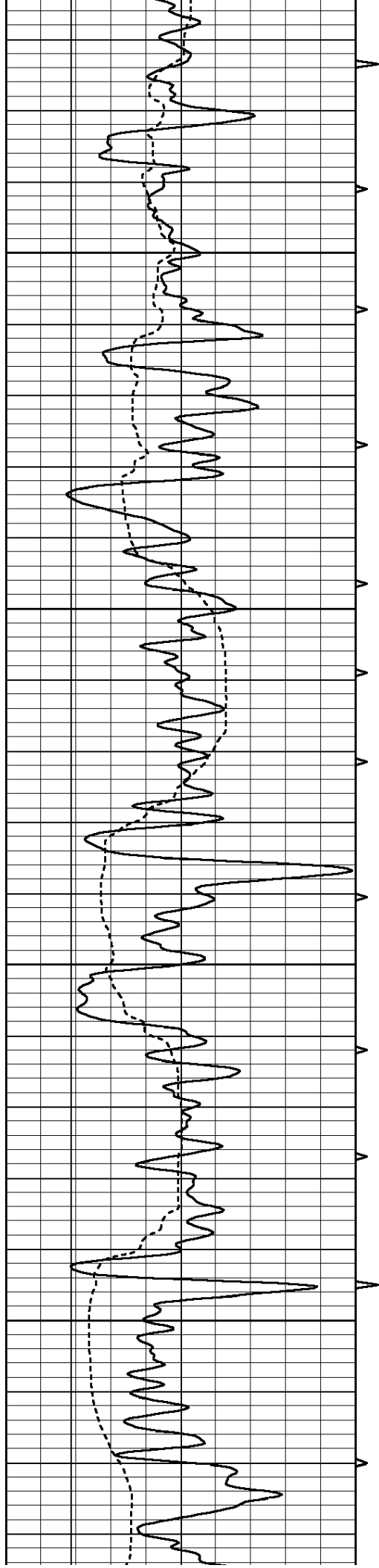










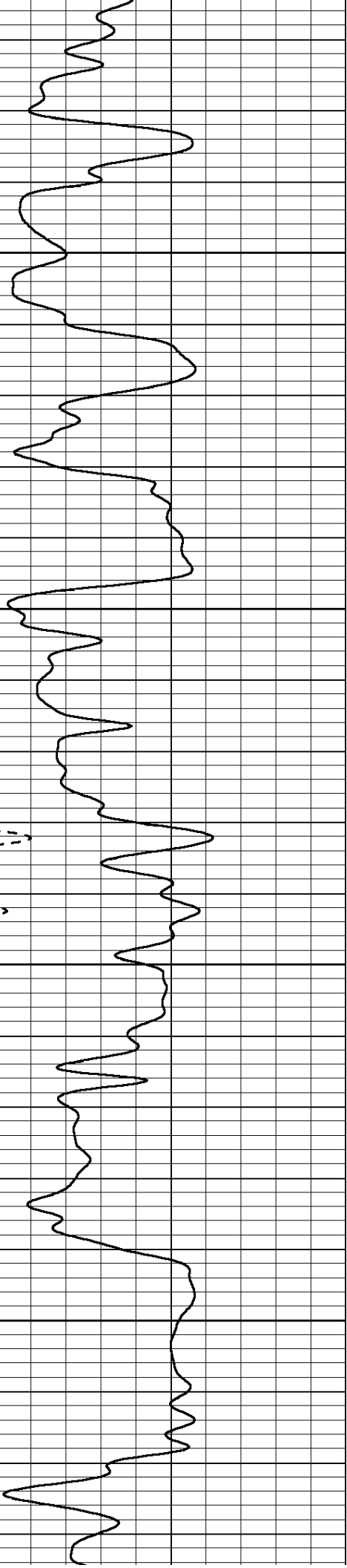
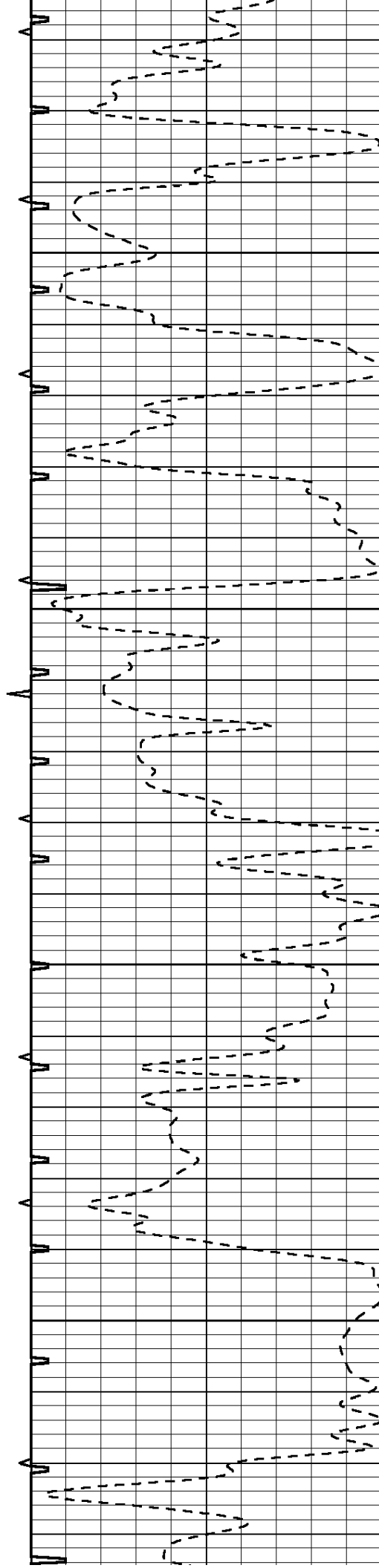


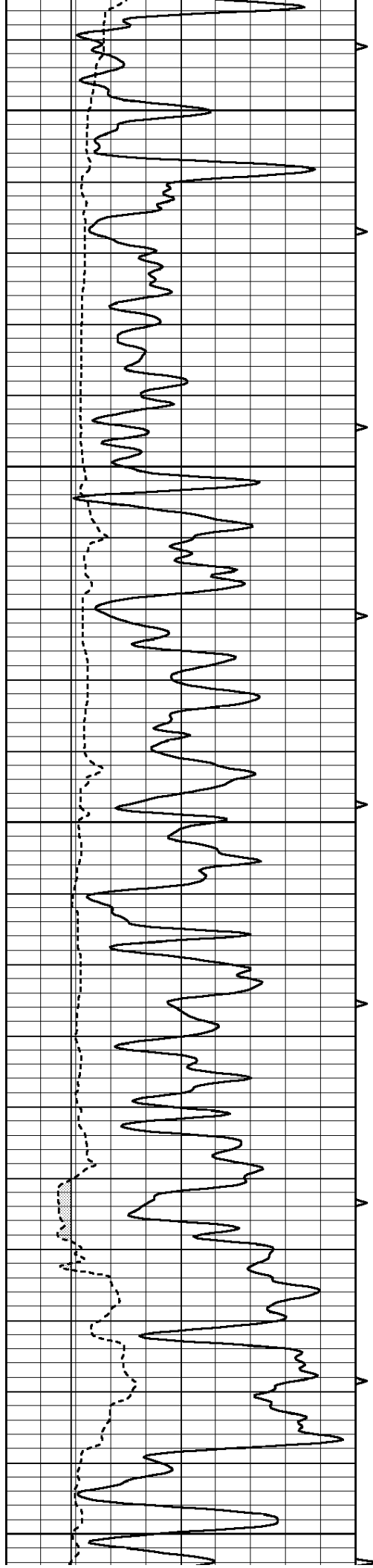
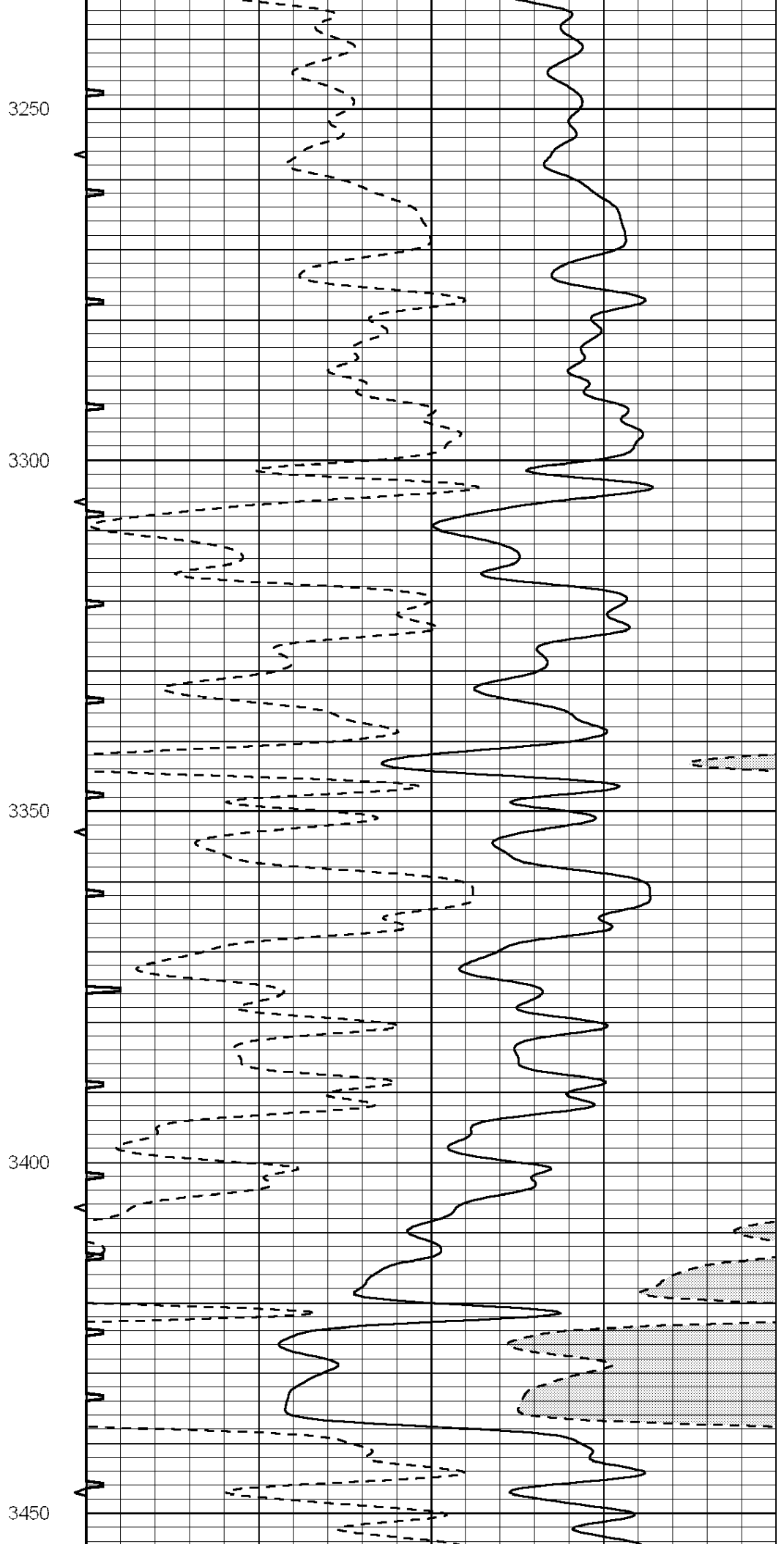
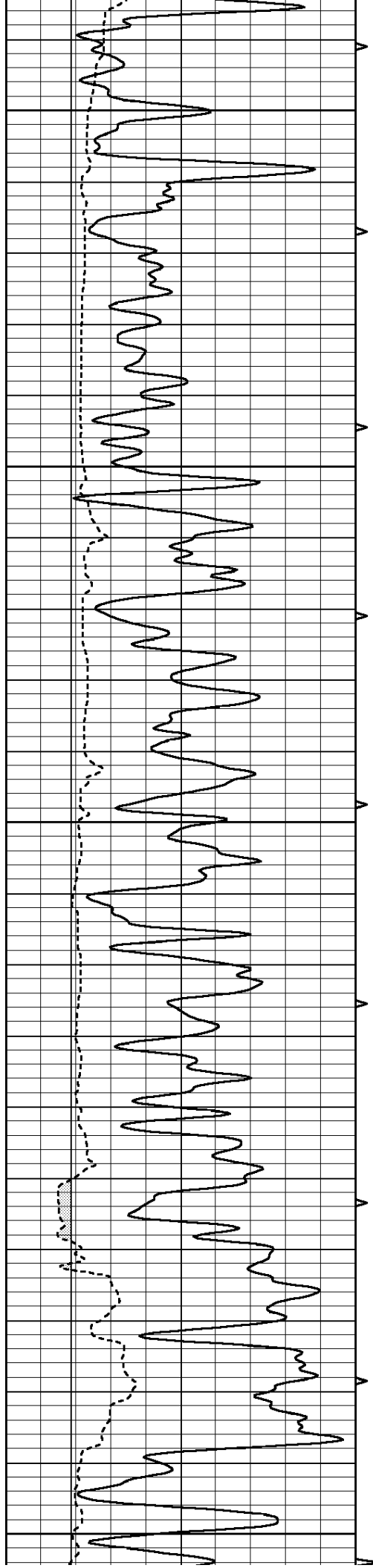
3050

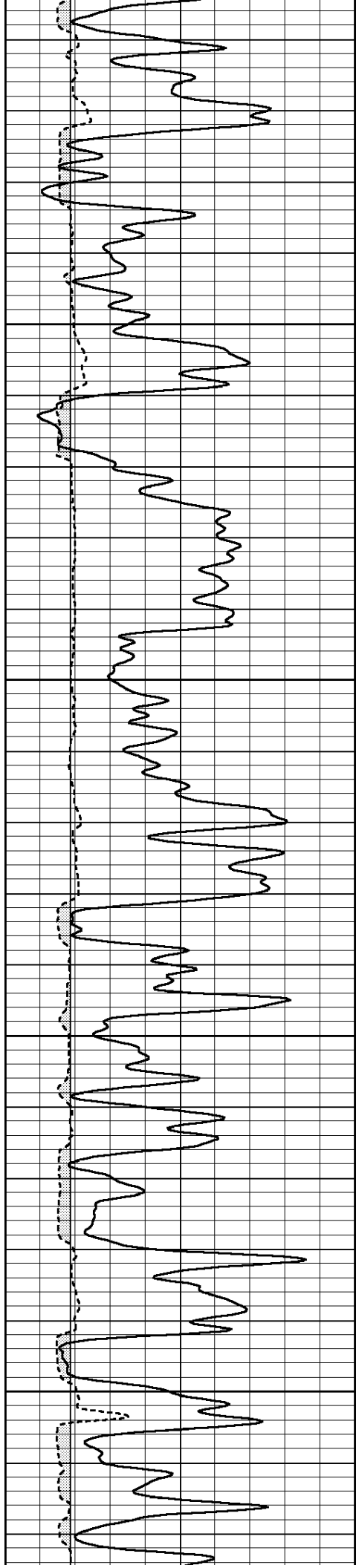
3100

3150

3200





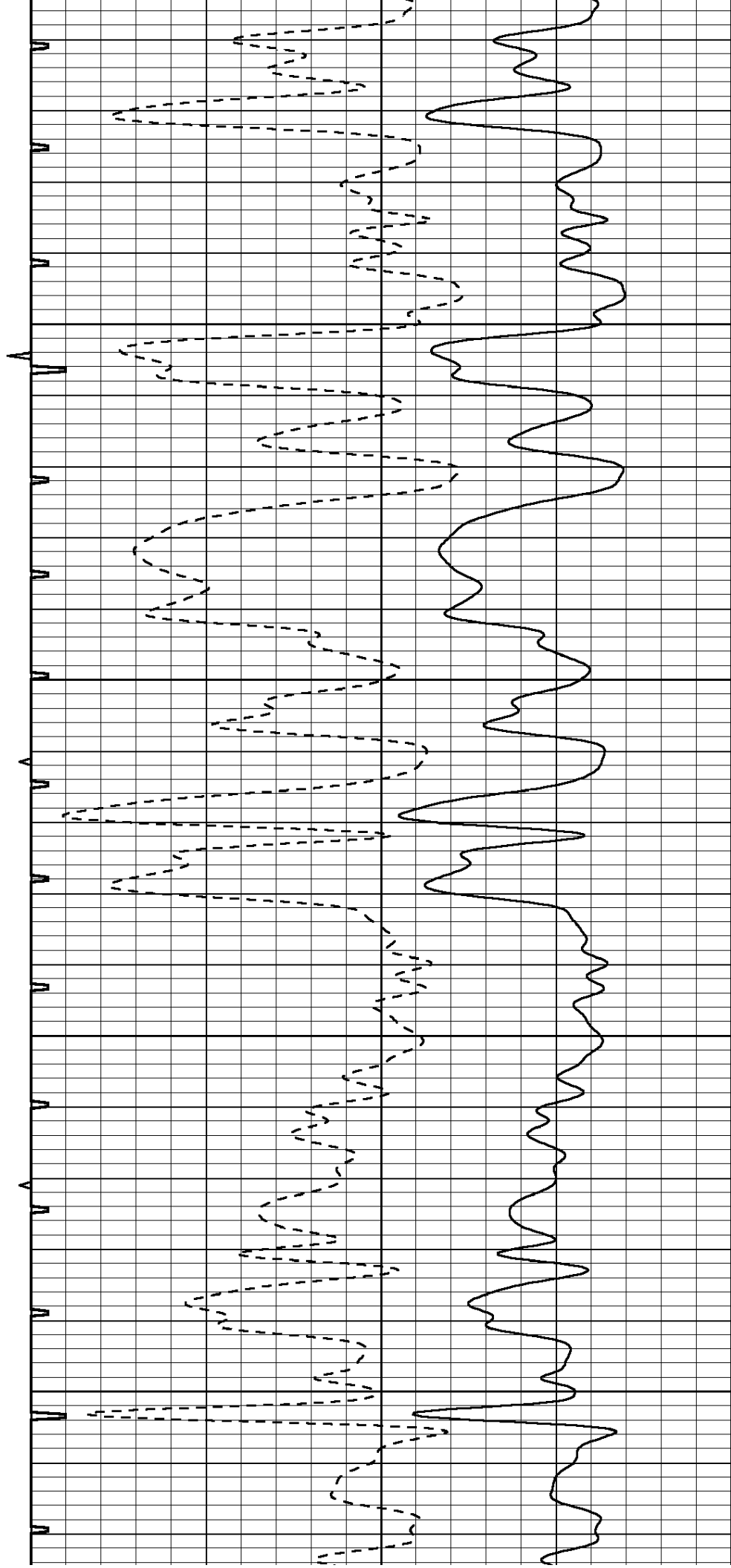


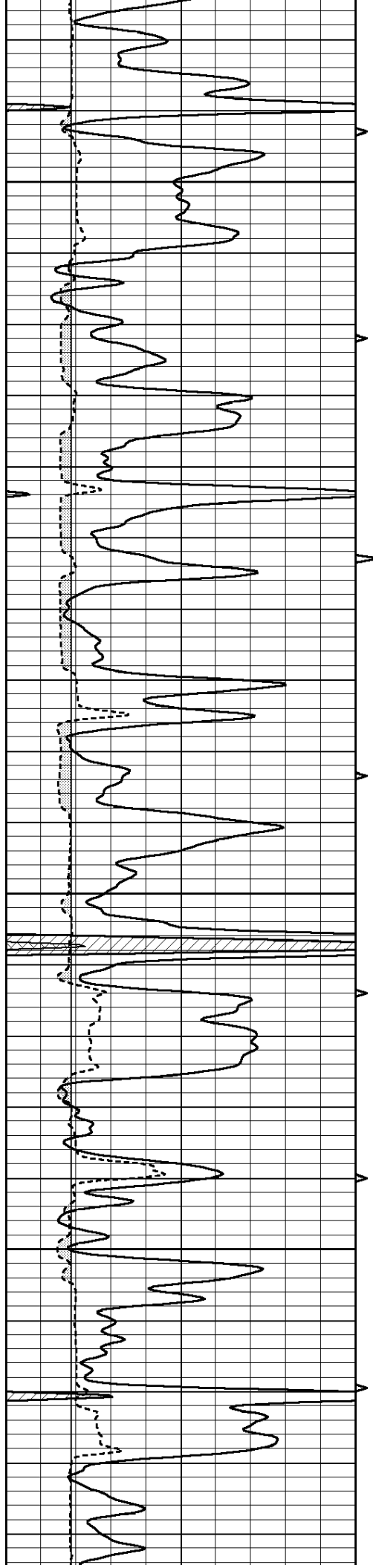
3500

3550

3600

3650



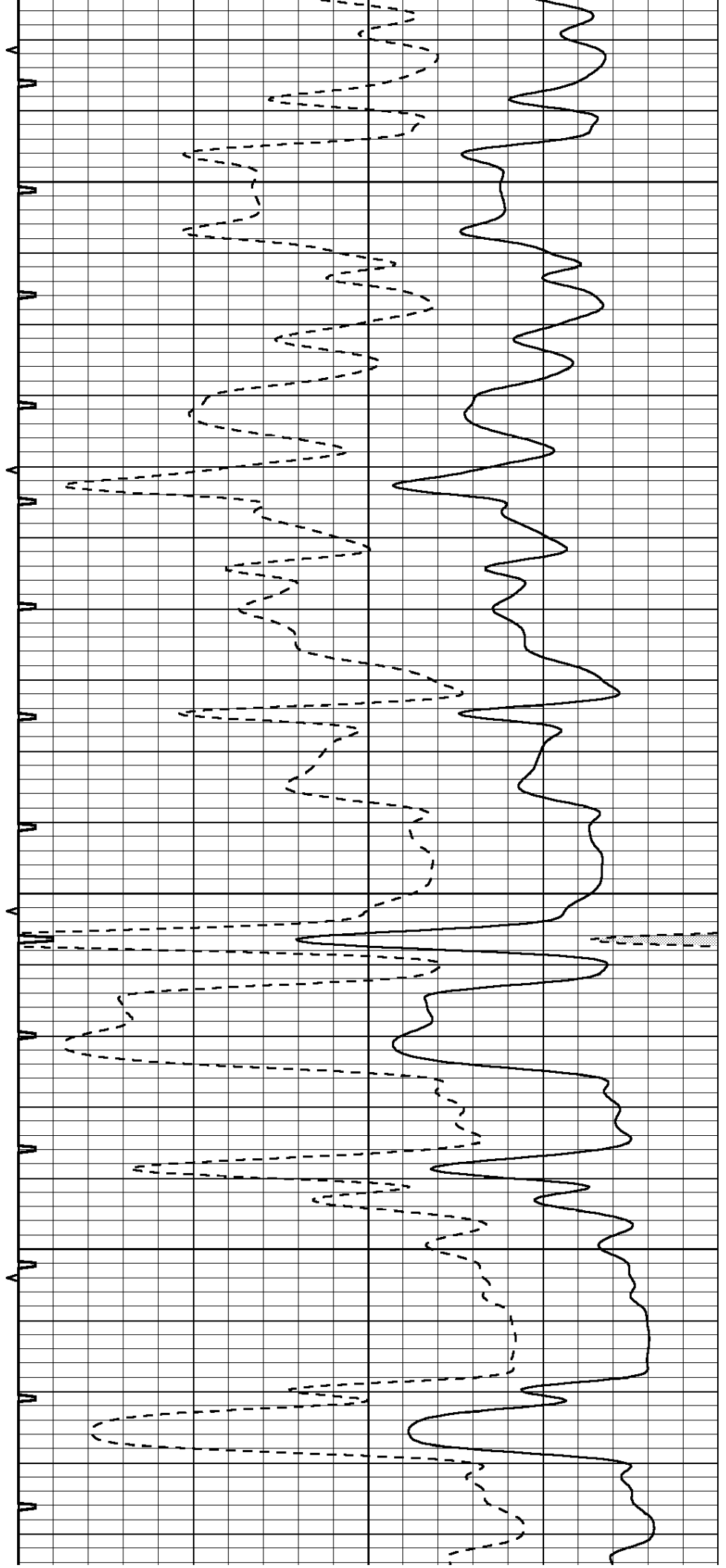


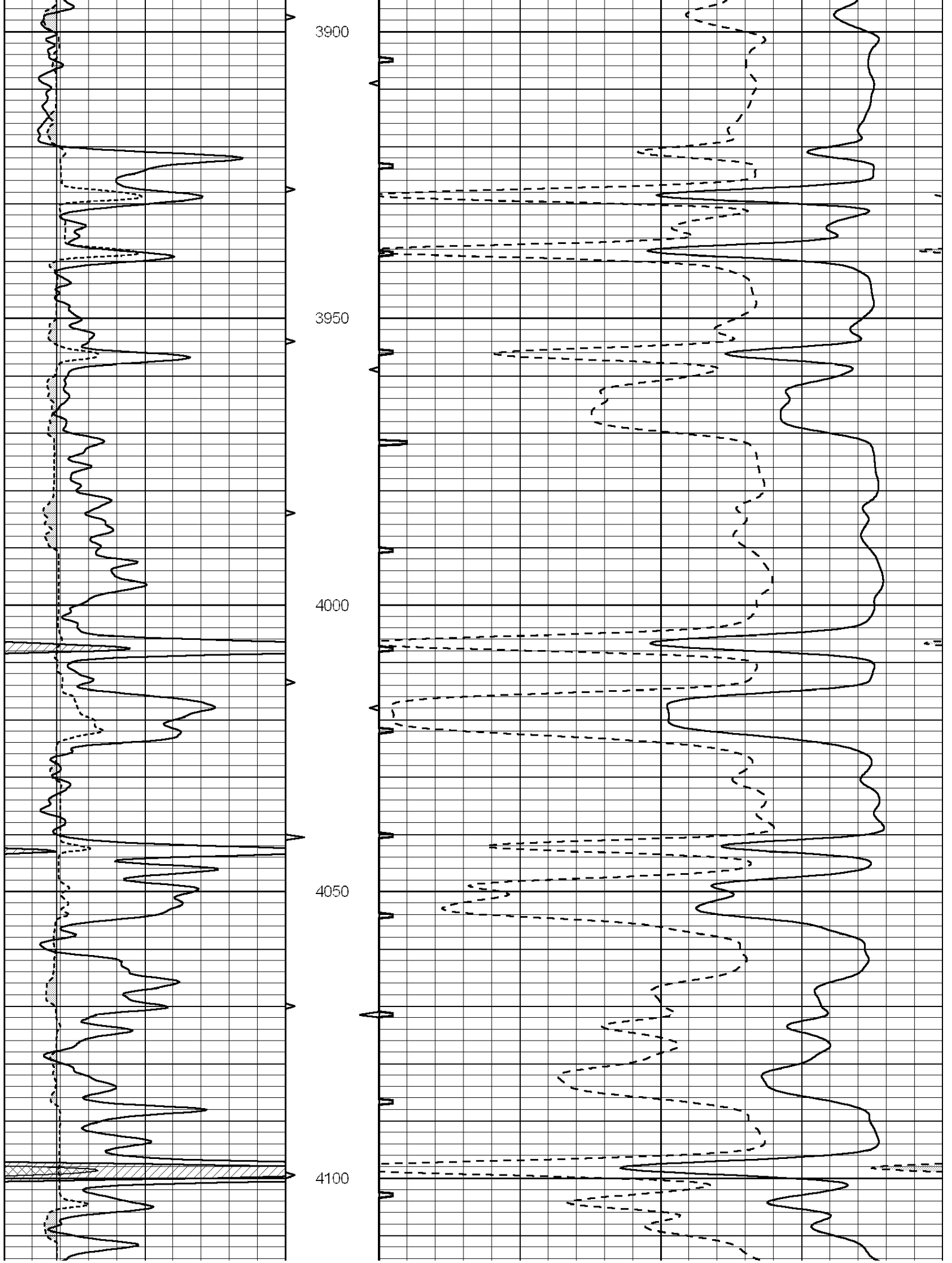
3700

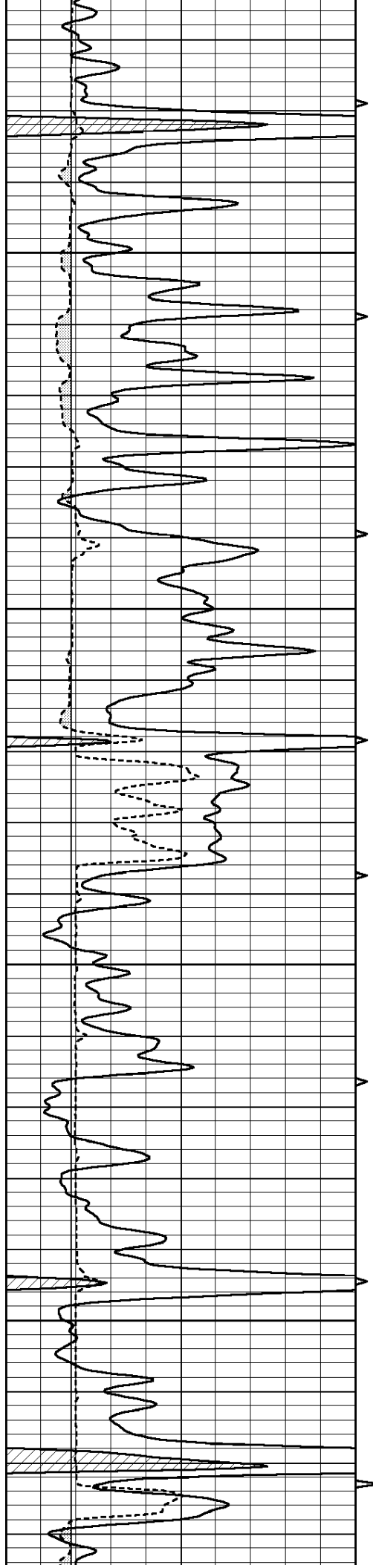
3750

3800

3850





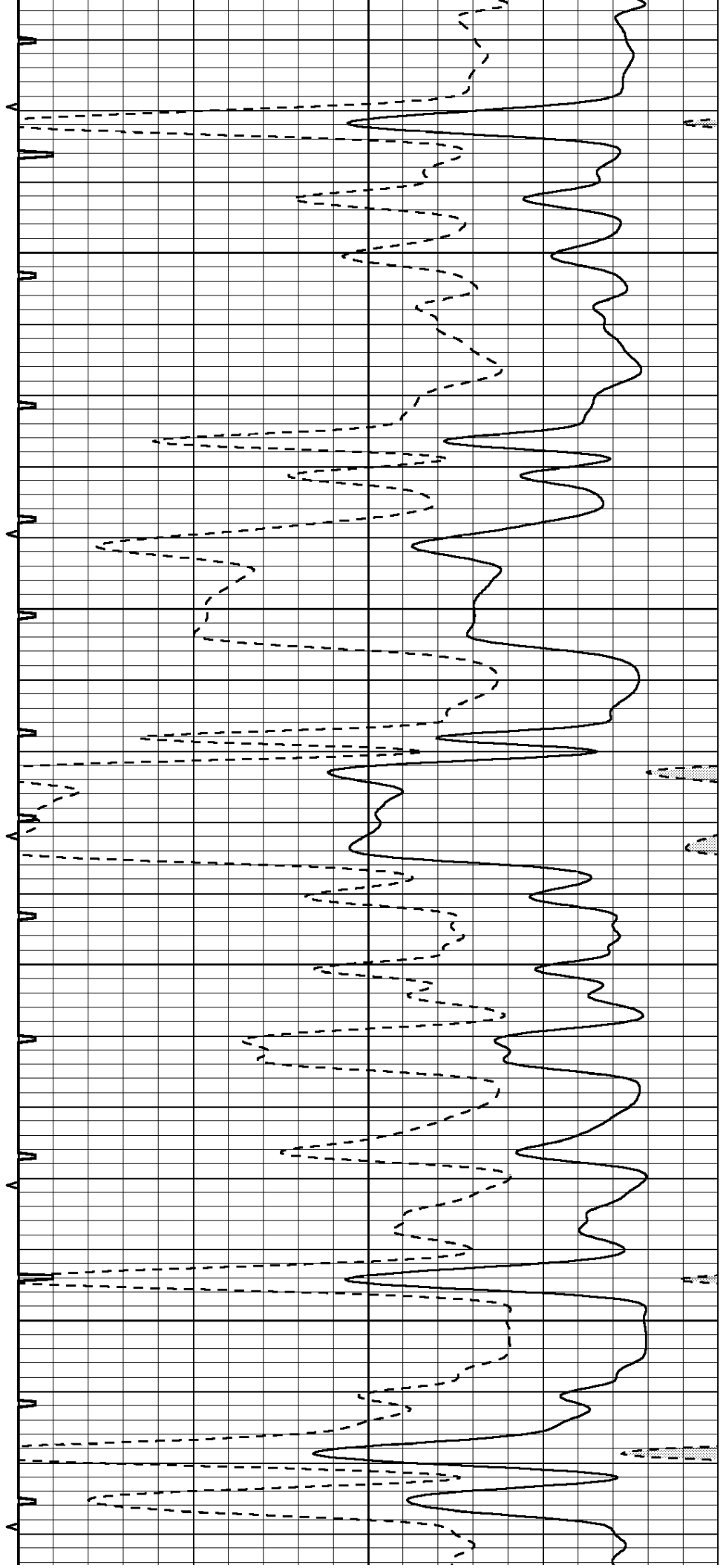


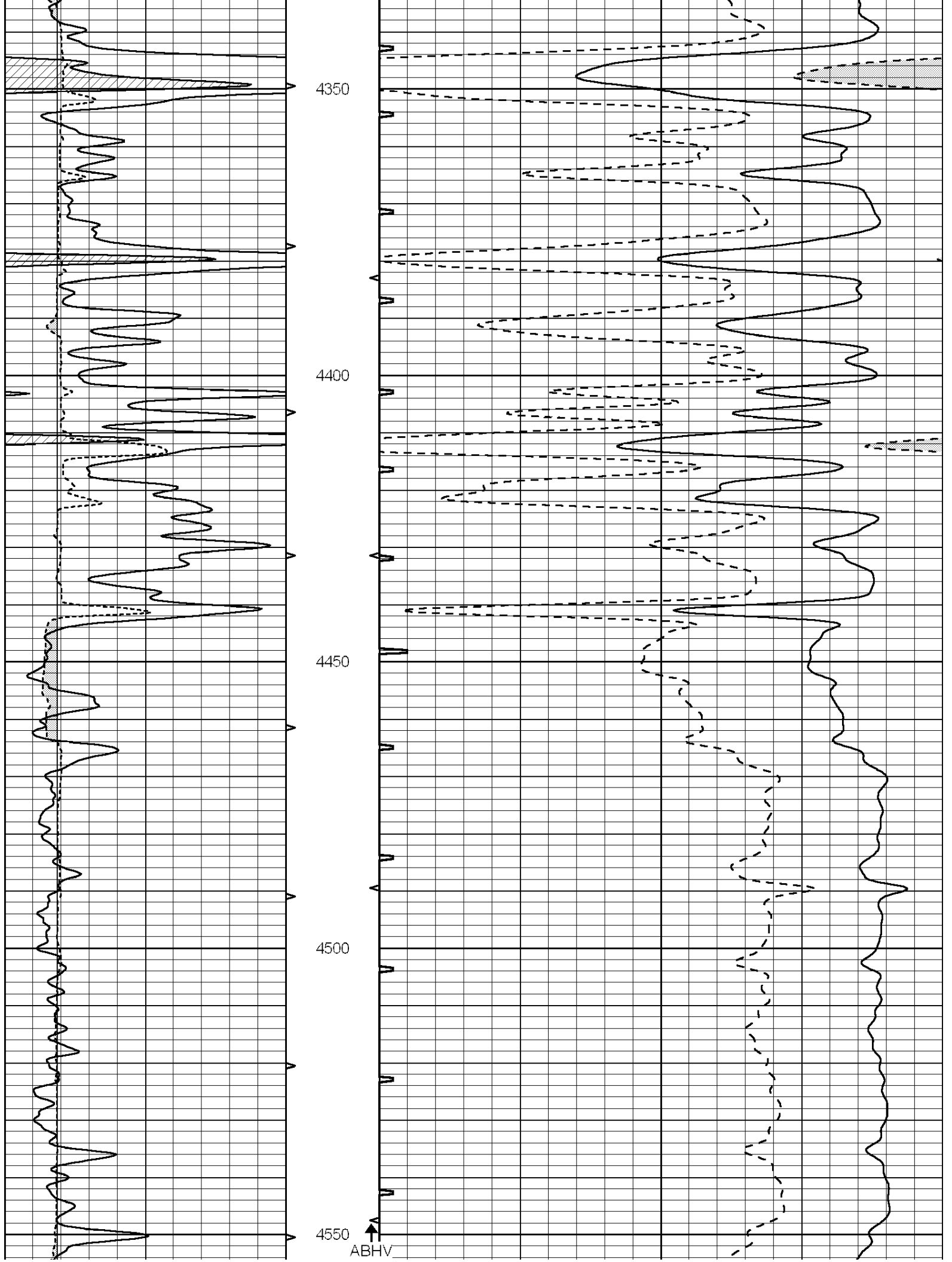
4150

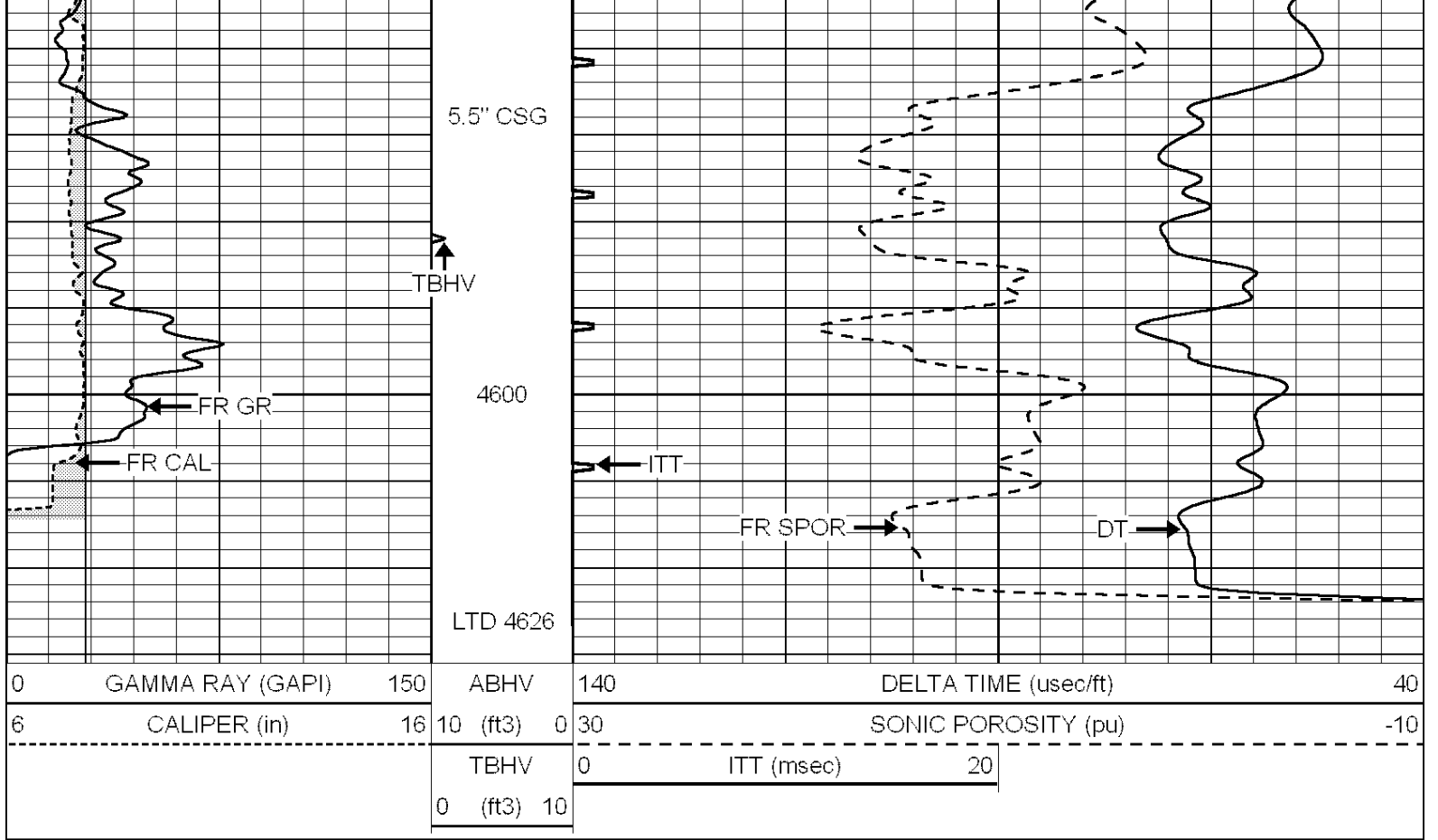
4200

4250

4300







SUPERIOR  
Hays,  
Kansas

# REPEAT SECTION

Database File: 009460pe.db  
 Dataset Pathname: pass5.1  
 Presentation Format: \_slt  
 Dataset Creation: Sat Jul 07 10:21:05 2012 by Calc Open-Cased 090629  
 Charted by: Depth in Feet scaled 1:240

