



SUPERIOR
Hays,
Kansas

MICRO
LOG

Company O'BRIEN RESOURCES, LLC.
Well HAYES 27 #1
Field WILDCAT
County GOVE
State KANSAS

Company O'BRIEN RESOURCES, LLC.
Well HAYES 27 #1
Field WILDCAT
County GOVE State KANSAS

Location: 330' FSL & 107'4' FWL
API #: 15-063-21986-0000
SEC 27 TWP 14S RGE 30W
Permanent Datum GROUND LEVEL Elevation 2750
Log Measured From KELLY BUSHING 5' A.G.L.
Drilling Measured From KELLY BUSHING
Elevation
K.B. 2755
D.F. 2753
G.L. 2750

Date	7/7/12
Run Number	TWO
Depth Driller	4625
Depth Logger	4626
Bottom Logged Interval	4608
Top Log Interval	3500
Casing Driller	8 5/8" @ 220
Casing Logger	218
Bit Size	7 7/8
Type Fluid in Hole	CHEMICAL MUD
Density / Viscosity	9.3/60
pH / Fluid Loss	9.0/8.4
Source of Sample	FLOWLINE
Rim @ Meas. Temp	1.0 @ 89F
Rmf @ Meas. Temp	.75 @ 89F
Rmc @ Meas. Temp	1.20 @ 89F
Source of Rmf / Rmc	MEASURED
Rim @ BHT	.72 @ 122F
Time Circulation Stopped	2 HOURS
Time Logger on Bottom	
Maximum Recorded Temperature	122F
Equipment Number	680
Location	HAYS, KS.
Recorded By	JASON CAPPELLUCCI
Witnessed By	SEAN DEENIHAN

<<< Fold Here >>>

All interpretations are opinions based on inferences from electrical or other measurements and we cannot and do not guarantee the accuracy or correctness of any interpretation, and we shall not, except in the case of gross or willful negligence on our part, be liable or responsible for any loss, costs, damages, or expenses incurred or sustained by anyone resulting from any interpretation made by any of our officers, agents or employees. These interpretations are also subject to our general terms and conditions set out in our current Price Schedule.

Comments

THANK YOU FOR USING SUPERIOR WELL SERVICE (785) 628-6395
DIRECTIONS
GOVE, KS. - 10 S. TO RD I. - 9 W. - 1 S. - E. INTO

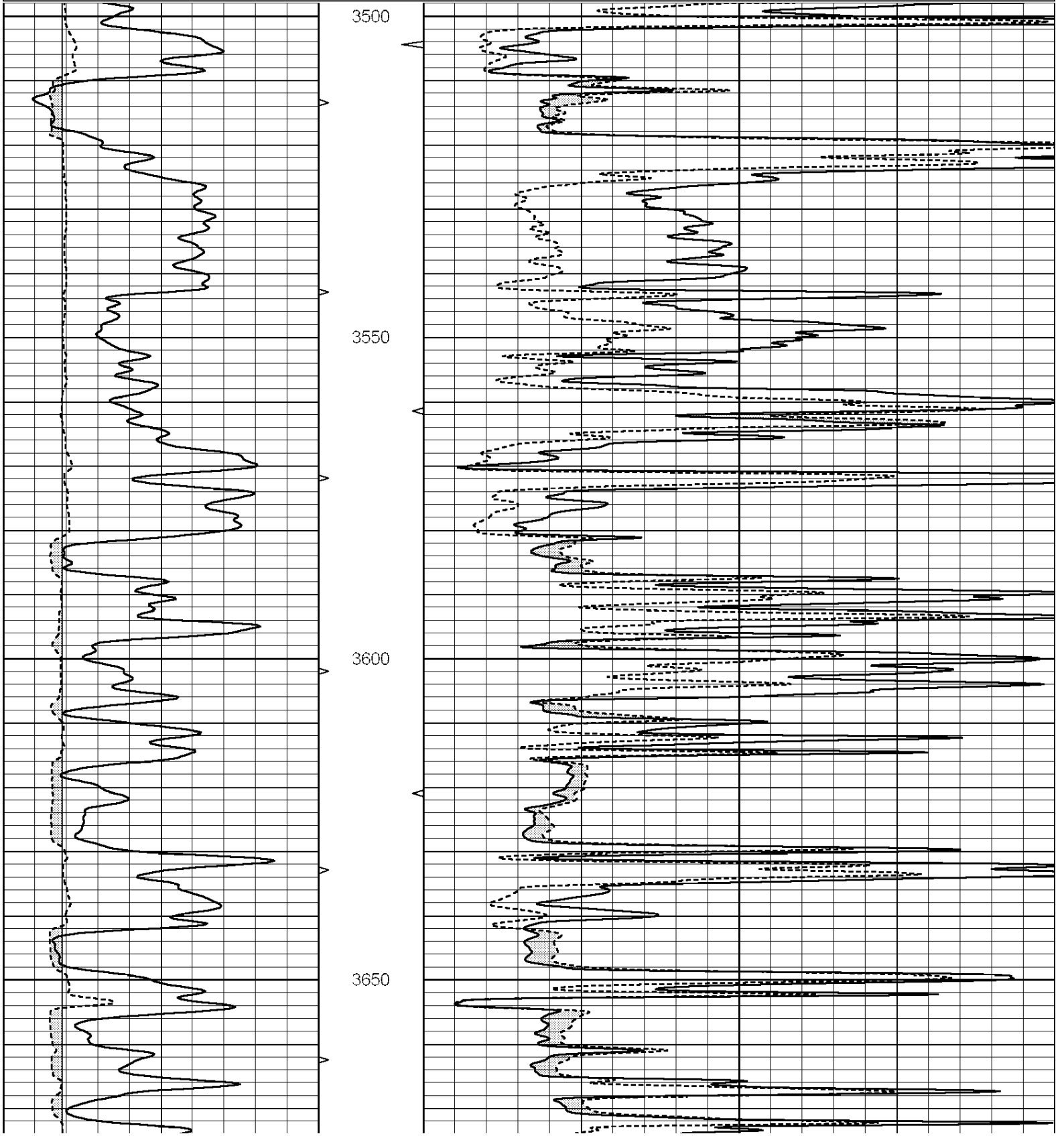


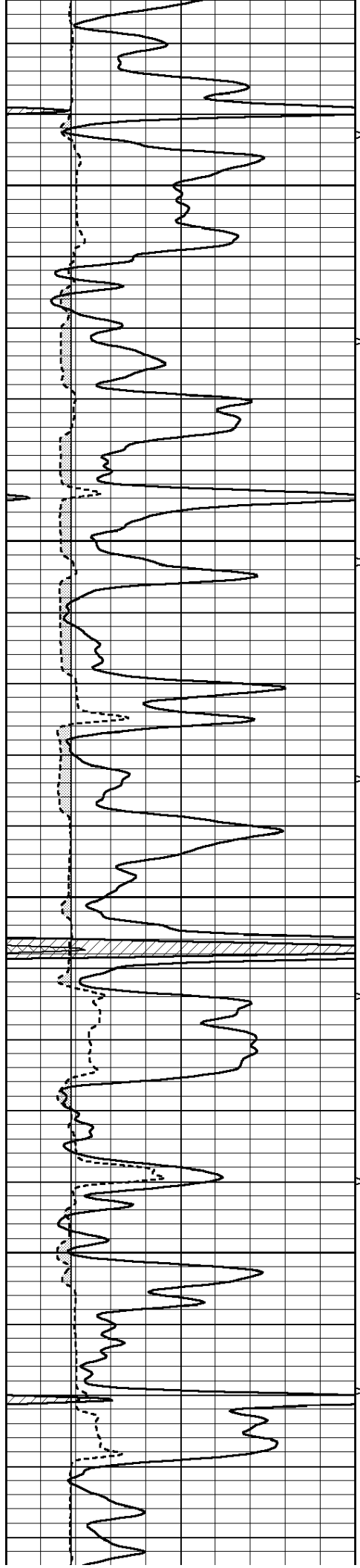
SUPERIOR
Hays,
Kansas

MAIN SECTION

Database File: 009460pe.db
 Dataset Pathname: pass6.1
 Presentation Format: _micro
 Dataset Creation: Sat Jul 07 10:21:54 2012 by Calc Open-Cased 090629
 Charted by: Depth in Feet scaled 1:240

0	GAMMA RAY (GAPI)	150	ABHV	0	MEL1.5 (Ohm-m)	40
6	CALIPER (in)	16	10 (ft3)	0 0	MEL2.0 (Ohm-m)	40
			TBHV			
			0 (ft3)	10		



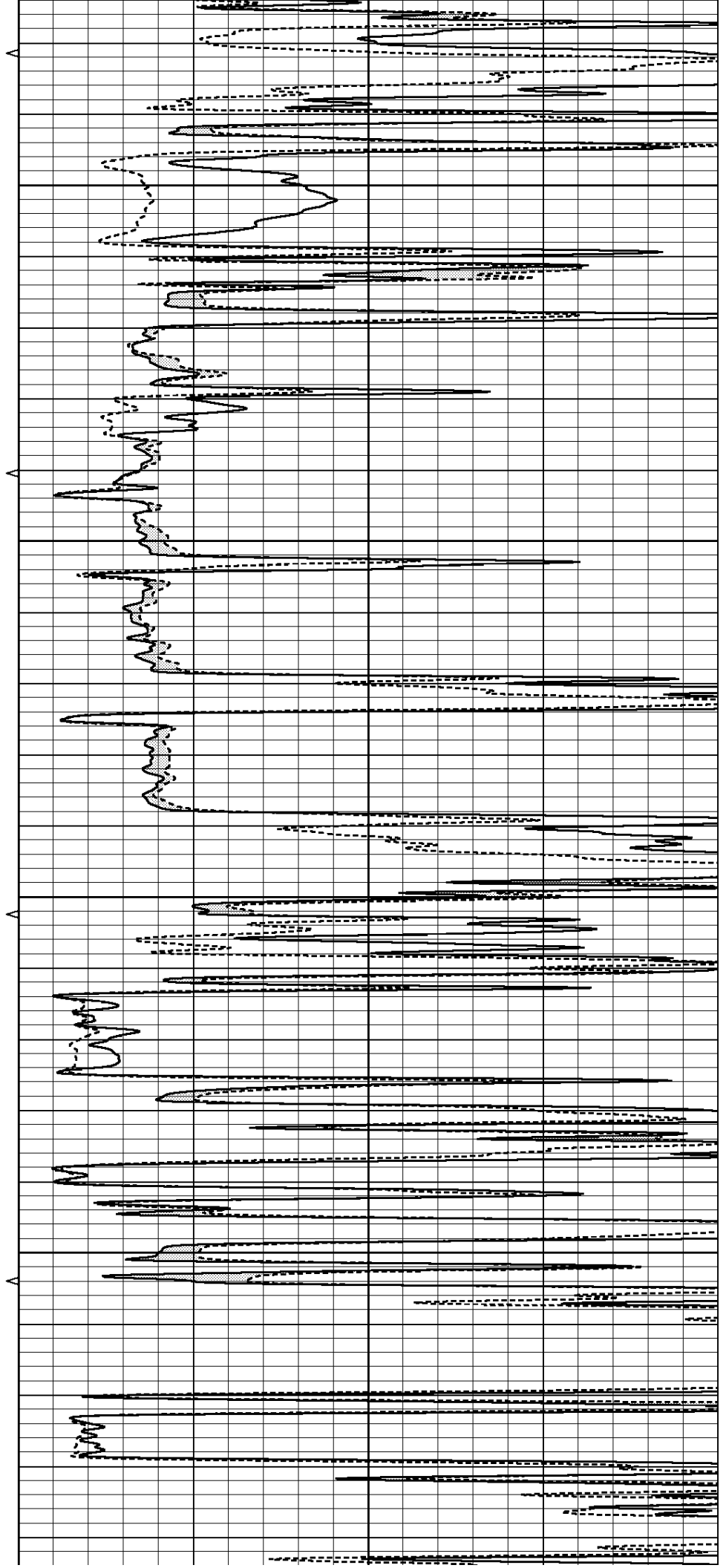


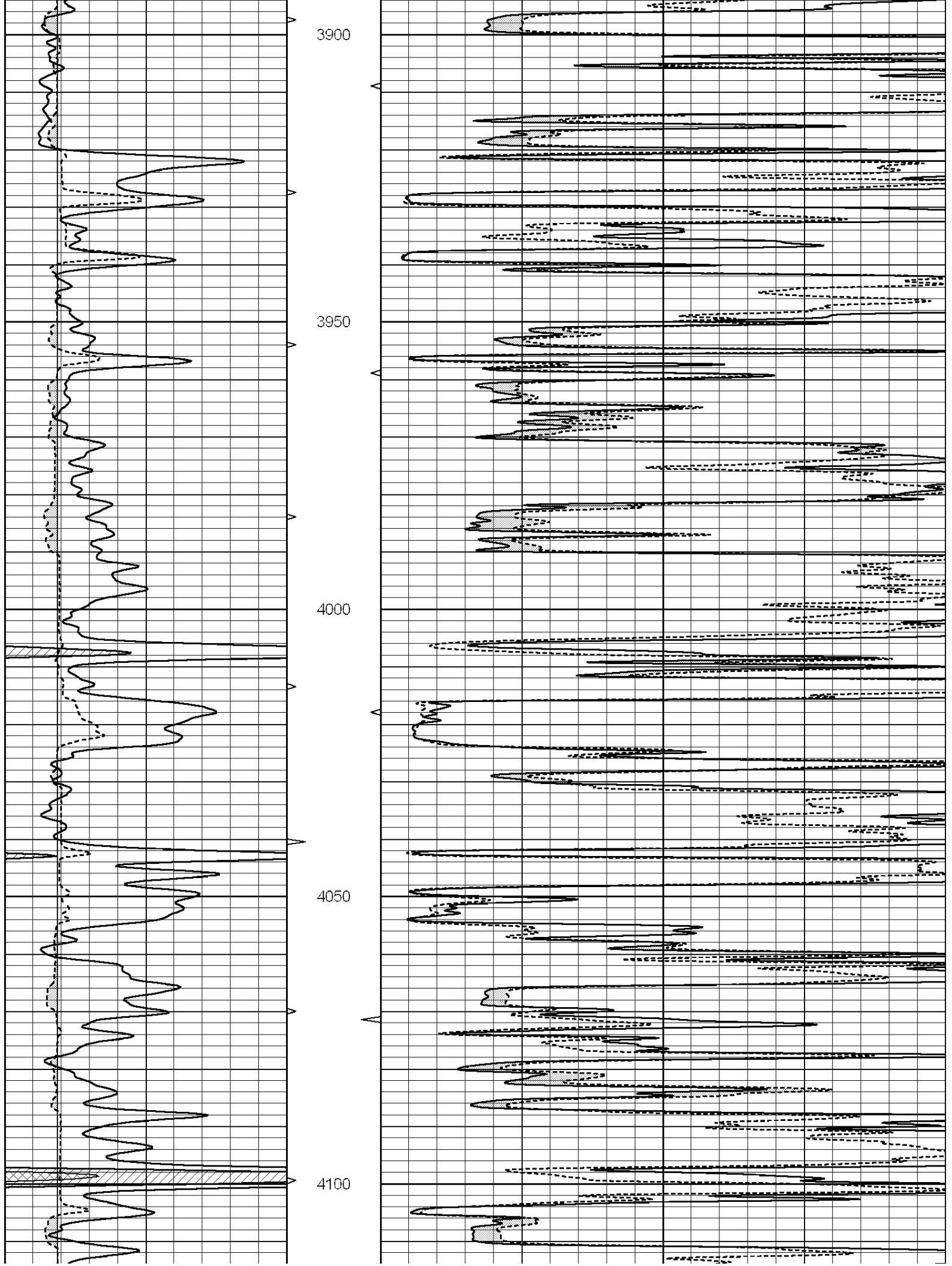
3700

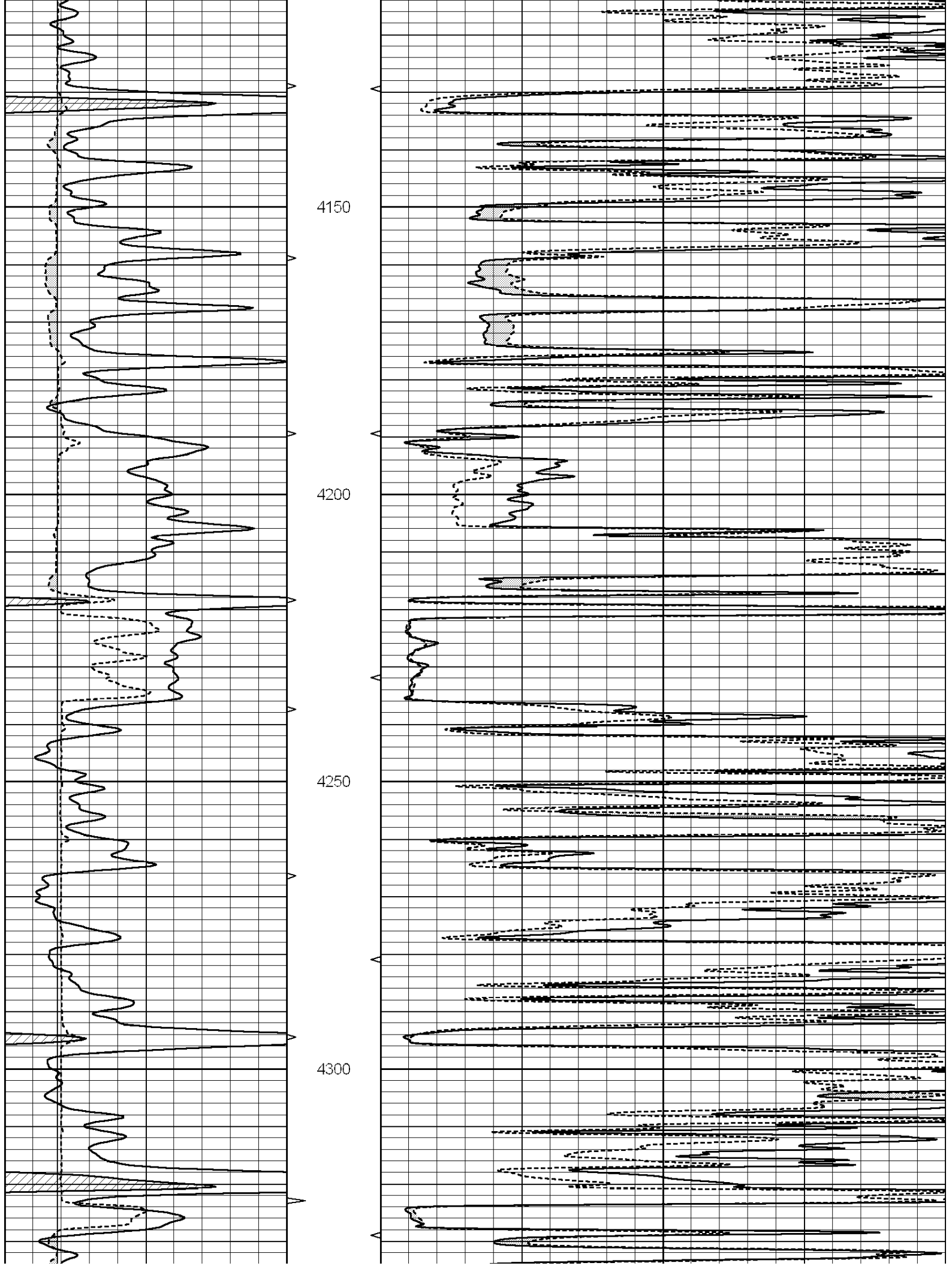
3750

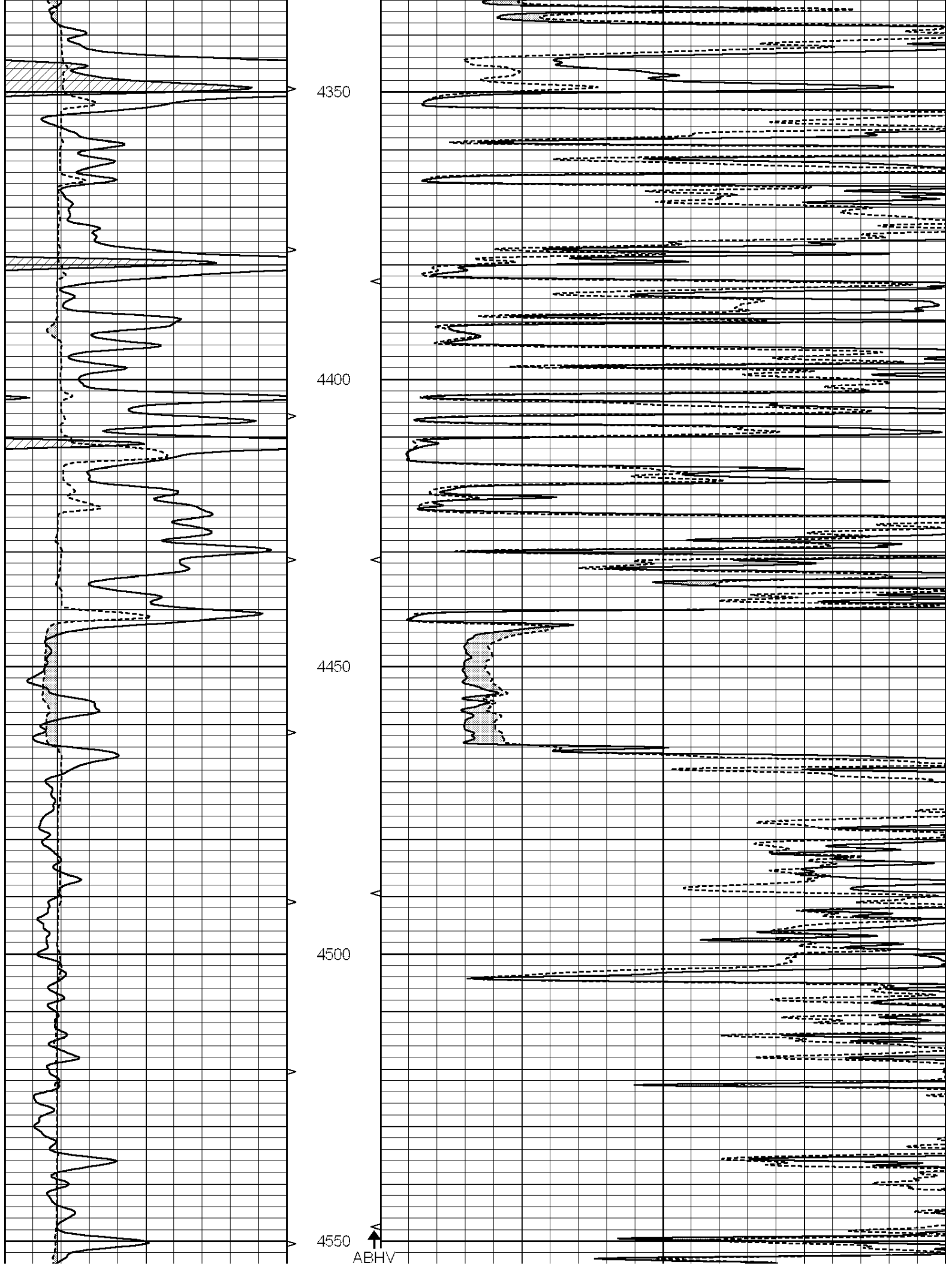
3800

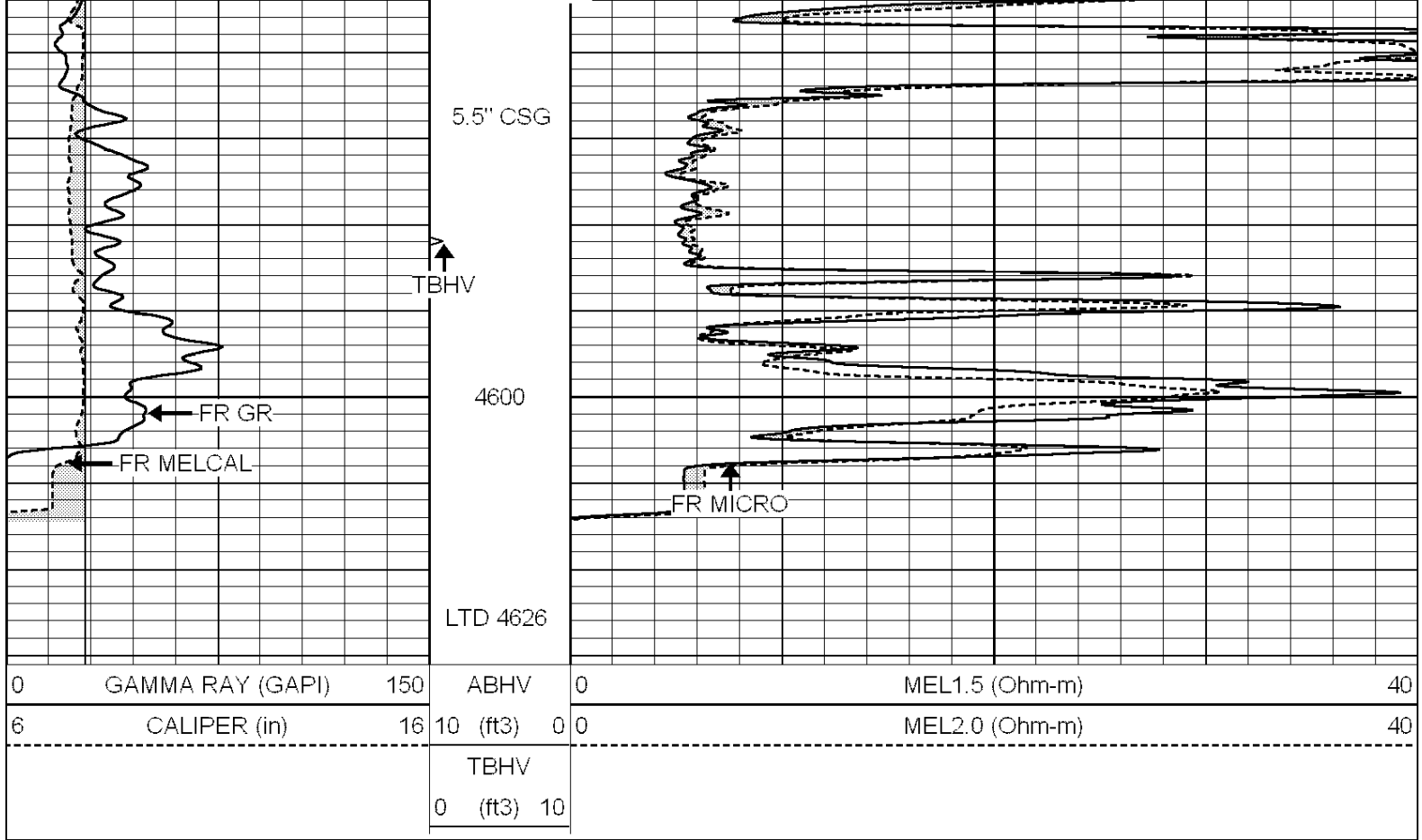
3850







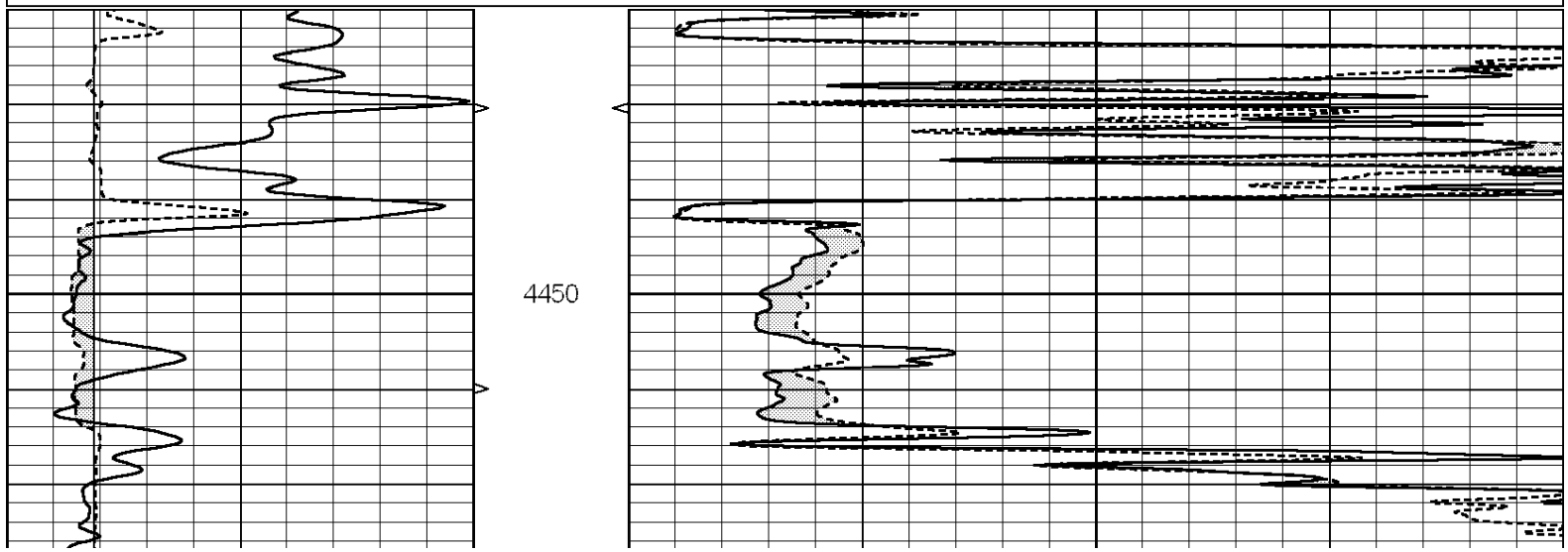
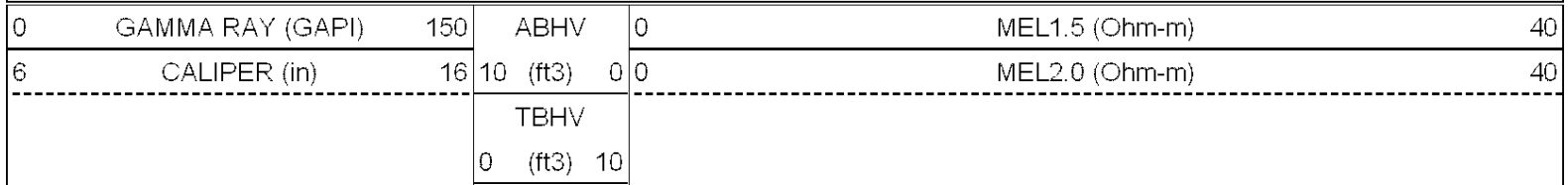


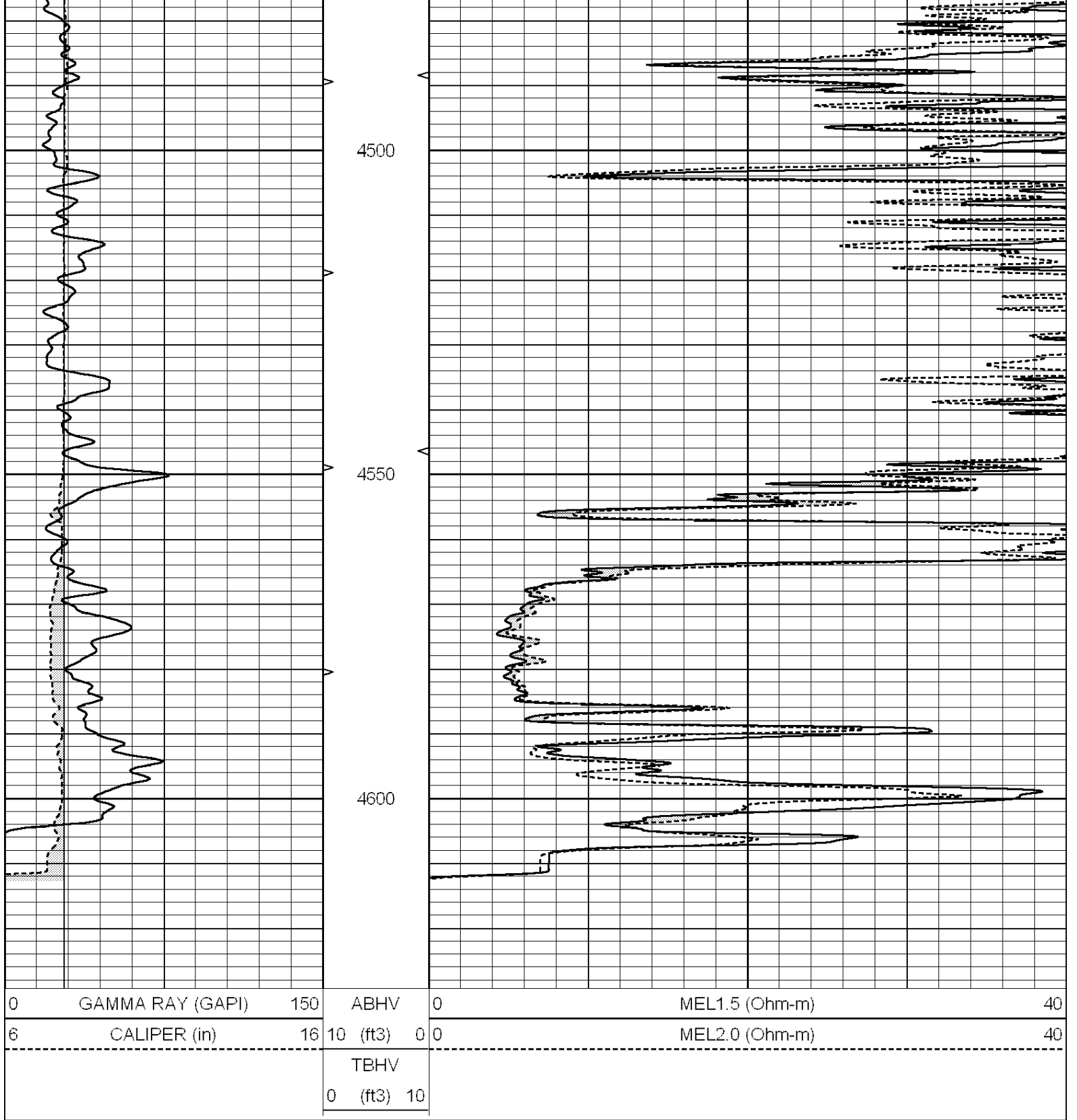


SUPERIOR
Hays,
Kansas

REPEAT SECTION

Database File: 009460pe.db
 Dataset Pathname: pass5.1
 Presentation Format: _micro
 Dataset Creation: Sat Jul 07 10:21:05 2012 by Calc Open-Cased 090629
 Charted by: Depth in Feet scaled 1:240





Calibration Report

Database File: 009460pe.db
 Dataset Pathname: pass6.1
 Dataset Creation: Sat Jul 07 10:21:54 2012 by Calc Open-Cased 090629

MICRO Calibration Report

Serial Number: MICRO6
 Tool Model: PROBE
 Performed: Wed May 23 05:16:50 2012

Caliper Calibration: Gain=6.253 Offset=-1.308

References	Low Cal	High Cal
Readings	5.800	13.000
	1.178	2.330
1.5" Calibration:	Gain=30.075	Offset=-0.200
	Low Cal	High Cal
References	0.000	20.000
Readings	0.004	1.196
2" Calibration:	Gain=30.041	Offset=0.000
	Low Cal	High Cal
References	0.000	20.000
Readings	0.006	0.913
Gamma Ray Calibration Report		
Serial Number:	#8	
Tool Model:	OPEN	
Performed:	Mon Jun 13 16:56:43 2011	
Calibrator Value:	150.0	GAPI
Background Reading:	0.0	cps
Calibrator Reading:	175.0	cps
Sensitivity:	0.8371	GAPI/cps