



SUPERIOR
Hays,
Kansas

**BOREHOLE
LOG**

Company O'BRIEN RESOURCES, LLC.
Well HAYES 27 #1
Field WILDCAT
County GOVE
State KANSAS

Company O'BRIEN RESOURCES, LLC.
Well HAYES 27 #1
Field WILDCAT
County GOVE State KANSAS

Location: 330' FSL & 1074' FWL
API # : 15-063-21986-0000
Permanent Datum GROUND LEVEL Elevation 2750
Log Measured From KELLY BUSHING 5' A.G.L.
Drilling Measured From KELLY BUSHING
Elevation
K.B. 2755
D.F. 2753
G.L. 2750

Date	7/7/12
Run Number	ONE
Depth Driller	4625
Depth Logger	4626
Bottom Logged Interval	4616
Top Log Interval	200
Casing Driller	8 5/8" @ 220
Casing Logger	218
Bit Size	7 7/8
Type Fluid in Hole	CHEMICAL MUD
Density / Viscosity	9.3/60
pH / Fluid Loss	9.0/8.4
Source of Sample	FLOWLINE
Rim @ Meas. Temp	1.0 @ 89F
Rmf @ Meas. Temp	.75 @ 89F
Rmc @ Meas. Temp	1.20 @ 89F
Source of Rmf / Rmc	MEASURED
Rim @ BHT	.72 @ 122F
Time Circulation Stopped	2 HOURS
Time Logger on Bottom	
Maximum Recorded Temperature	122F
Equipment Number	680
Location	HAYS, KS.
Recorded By	JASON CAPPELLUCCI
Witnessed By	SEAN DEENIHAN

<<< Fold Here >>>

All interpretations are opinions based on inferences from electrical or other measurements and we cannot and do not guarantee the accuracy or correctness of any interpretation, and we shall not, except in the case of gross or willful negligence on our part, be liable or responsible for any loss, costs, damages, or expenses incurred or sustained by anyone resulting from any interpretation made by any of our officers, agents or employees. These interpretations are also subject to our general terms and conditions set out in our current Price Schedule.

Comments

THANK YOU FOR USING SUPERIOR WELL SERVICE (785) 628-6395
DIRECTIONS
GOVE, KS. - 10 S. TO RD I. - 9 W. - 1 S. - E. INTO

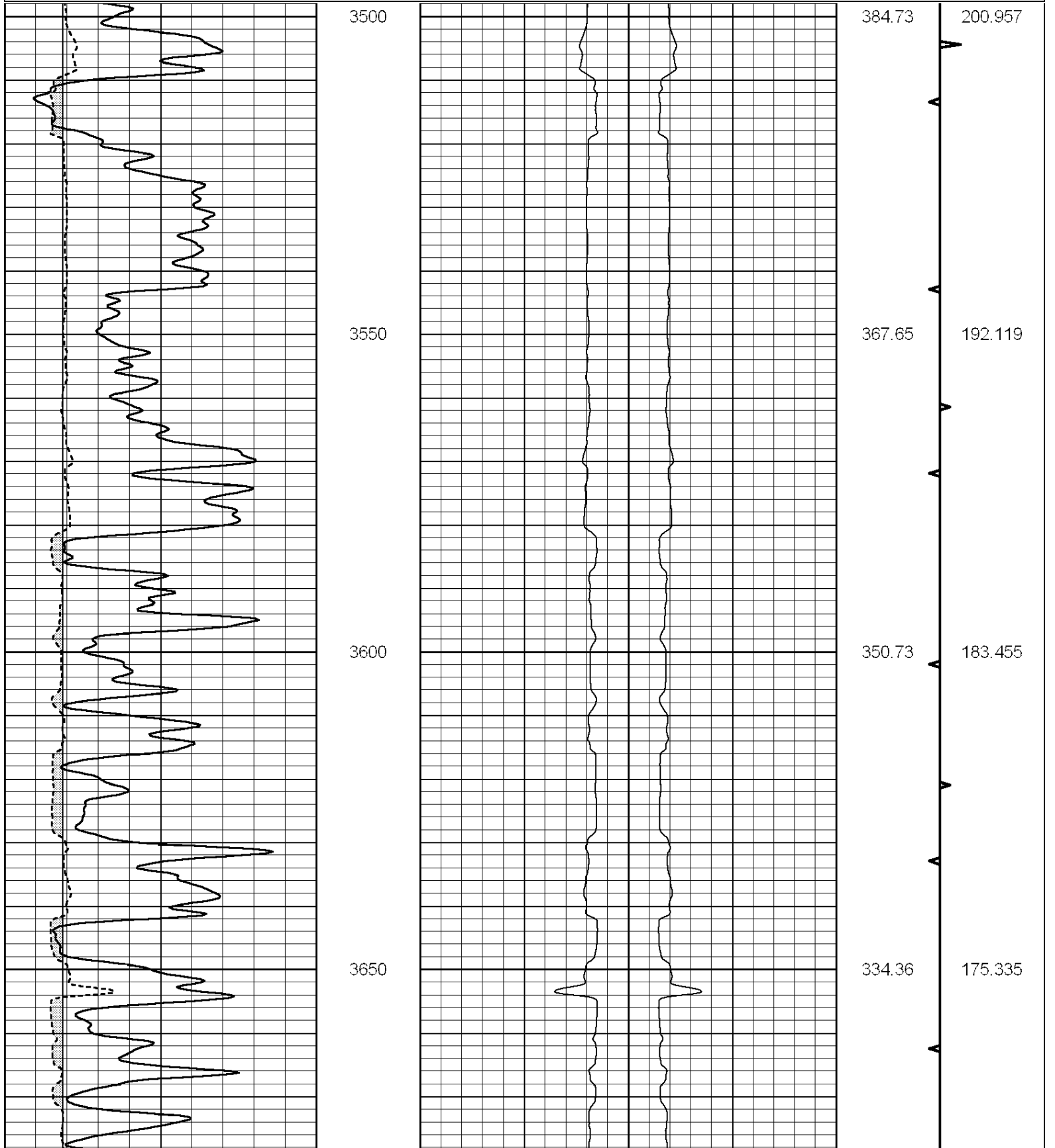


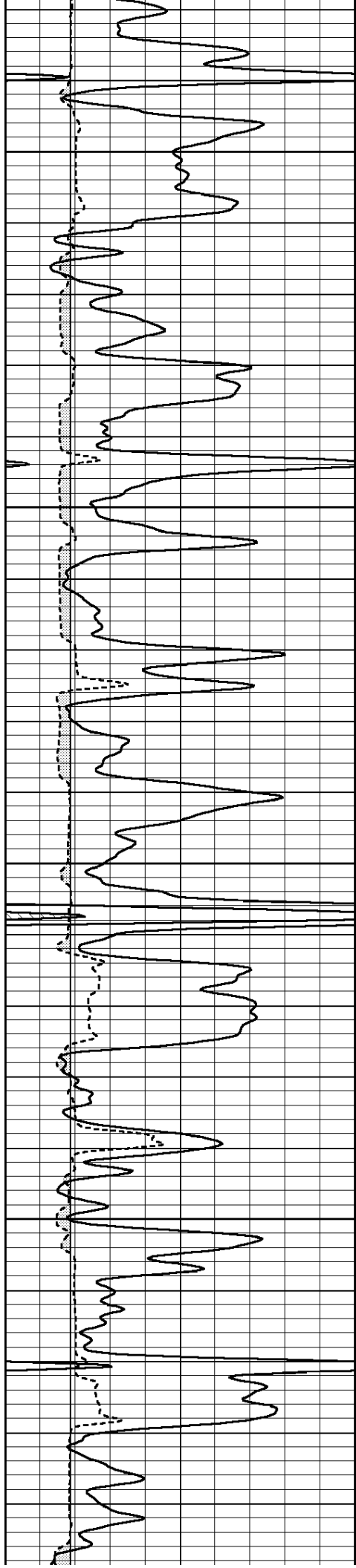
SUPERIOR
Hays,
Kansas

MAIN SECTION

Database File: 009460pe.db
 Dataset Pathname: pass6.1.1
 Presentation Format: obrbore
 Dataset Creation: Sat Jul 07 10:34:40 2012 by Calc Open-Cased 090629
 Charted by: Depth in Feet scaled 1:240

0	GR (GAPI)	150	16 LEFT CALIPER (in)	6	RIGHT CALIPER	BVTX	AVTX
6	MELCAL (in)	16		6	(in)	16	10 (ft3) 0 0 (ft3) 10
						TBHV (ft3)	ABHV (ft3)



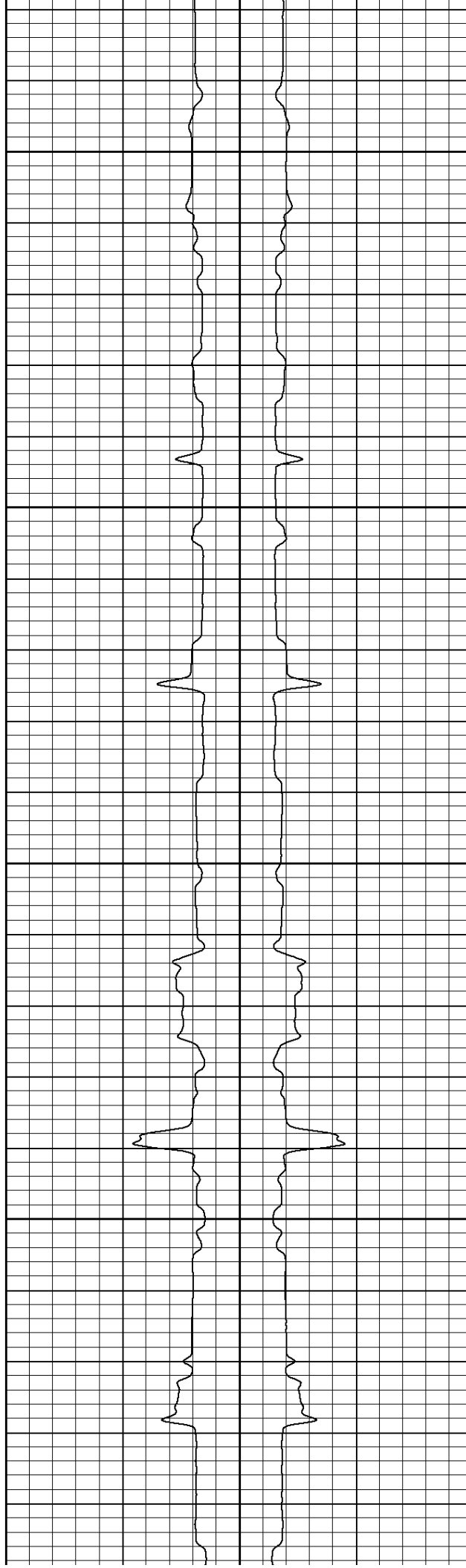


3700

3750

3800

3850



317.61

301.07

284.70

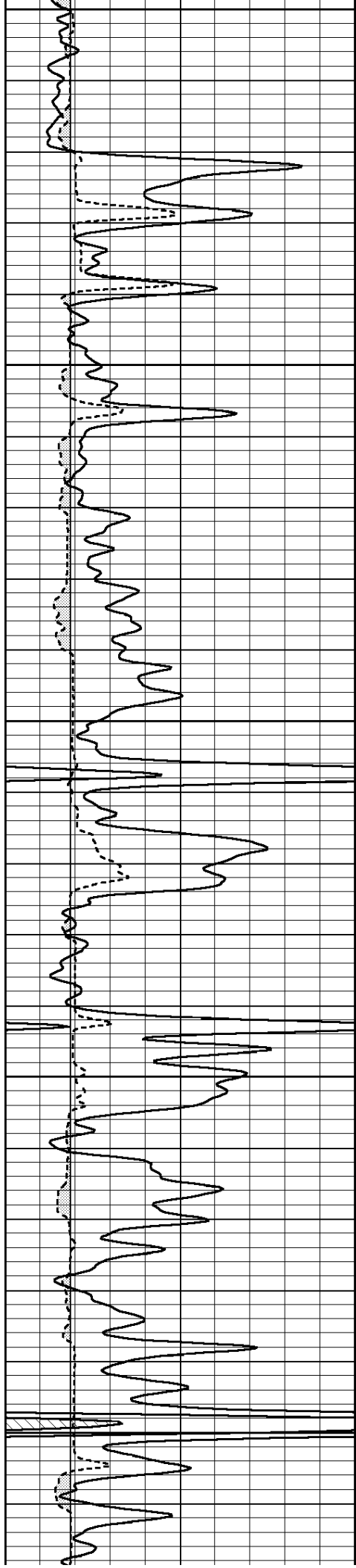
266.70

166.826

158.536

150.422

140.672



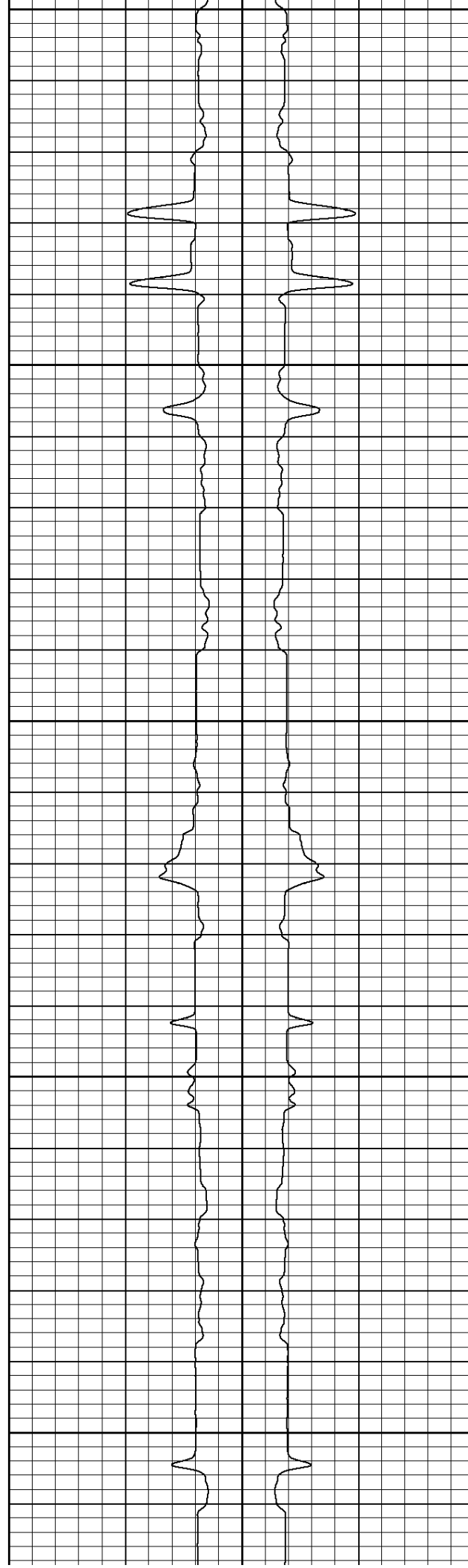
3900

3950

4000

4050

4100



249.33

231.31

214.76

196.73

179.91

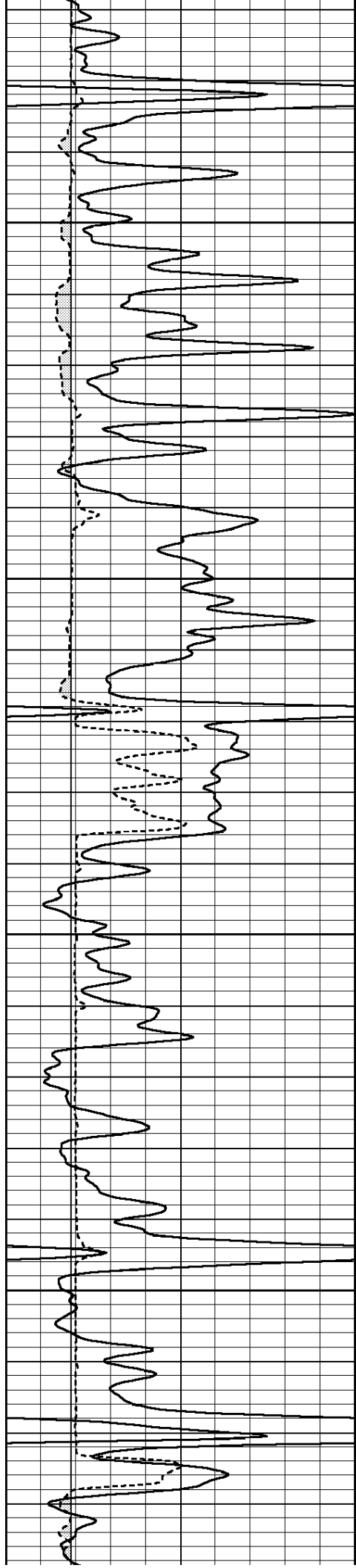
131.545

121.777

113.474

103.701

95.1268

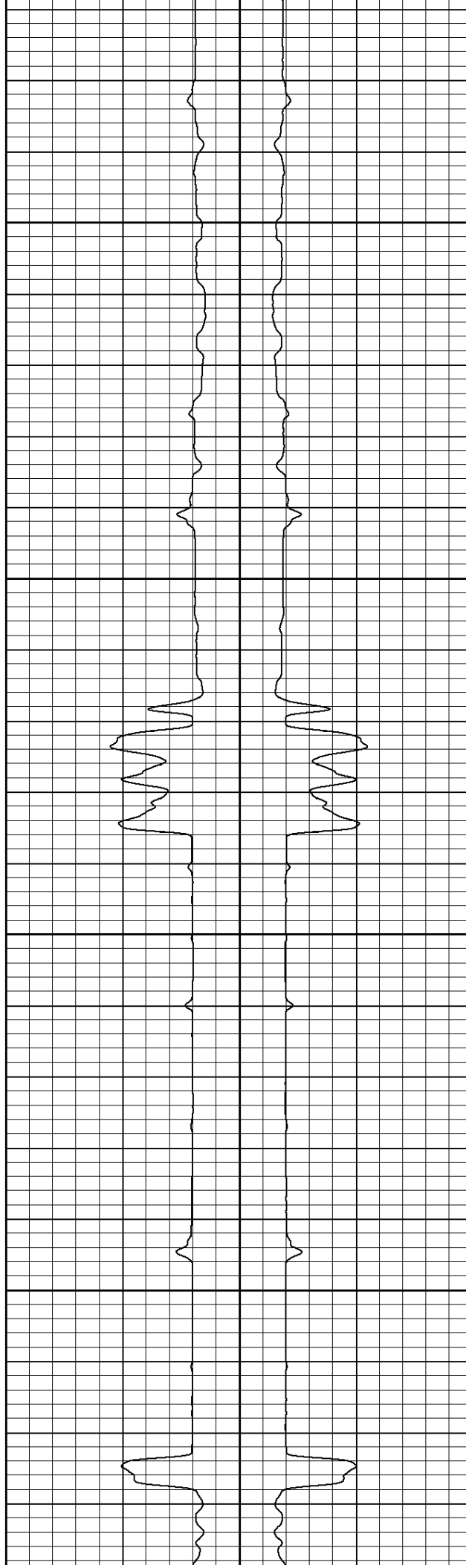


4150

4200

4250

4300



163.04

146.41

125.78

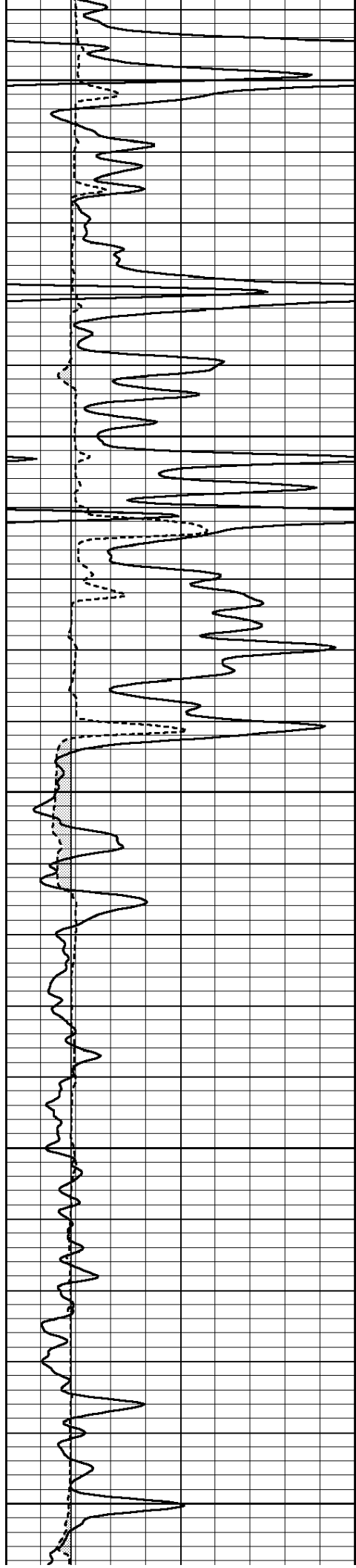
108.19

86.5009

78.1215

65.742

56.4051



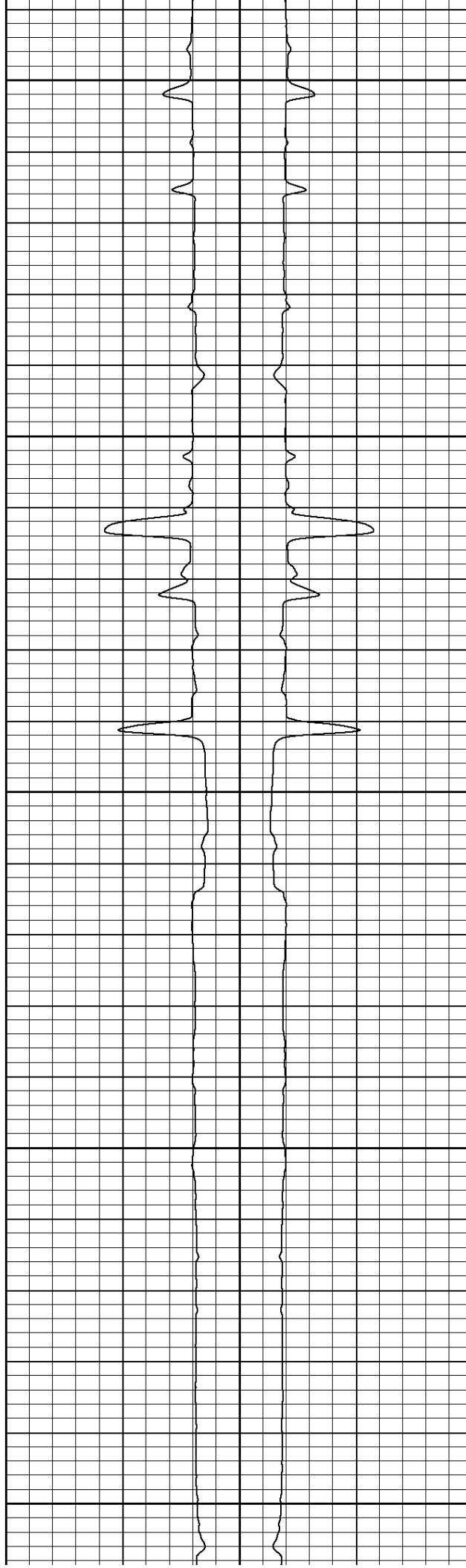
4350

4400

4450

4500

4550



89.87

72.42

53.57

37.00

20.17

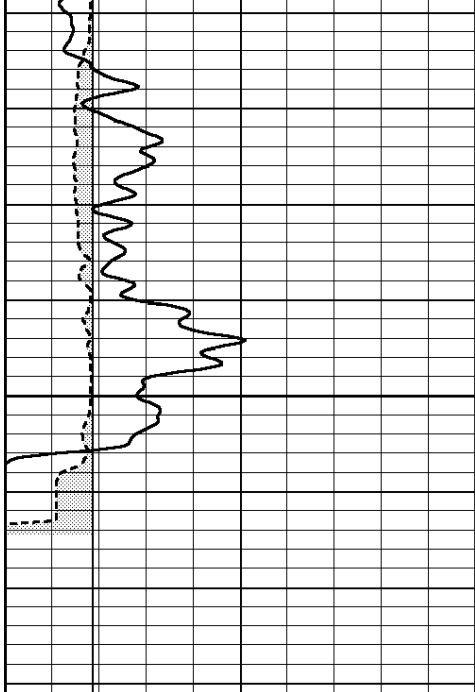
46.3309

37.1344

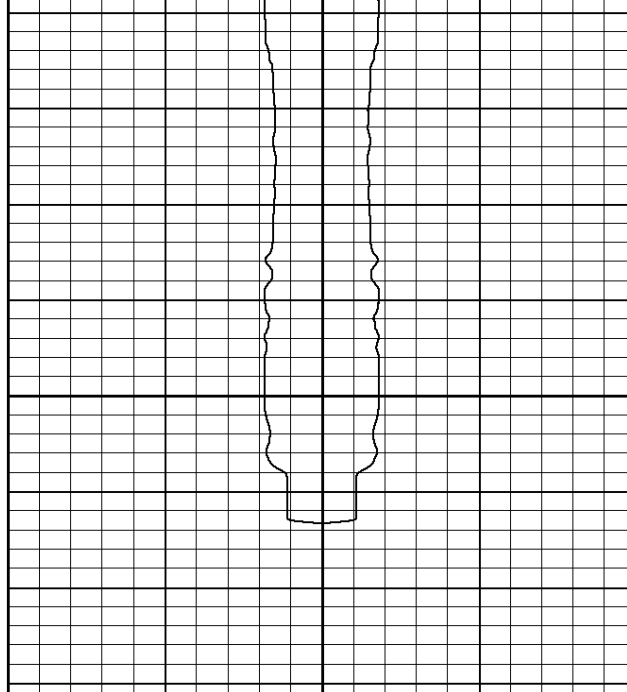
26.5345

18.2077

9.62729



4600



4.18

1.88573

0	GR (GAPI)	150
6	MELCAL (in)	16

16	LEFT CALIPER (in)	6
----	-------------------	---

	RIGHT CALIPER	
6	(in)	16

	BVTX		AVTX
10	(ft3)	0	0
	TBHV (ft3)		ABHV (ft3)