



SUPERIOR
Hays,
Kansas

**DUAL
INDUCTION
LOG**

Company O'BRIEN RESOURCES, LLC.
Well HAYES 27 #1
Field WILDCAT
County GOVE
State KANSAS

Company O'BRIEN RESOURCES, LLC.
Well HAYES 27 #1
Field WILDCAT
County GOVE State KANSAS

Location: 330' FSL & 107'4' FWL
API #: 15-063-21986-0000
SEC 27 TWP 14S RGE 30W
Permanent Datum GROUND LEVEL Elevation 2750
Log Measured From KELLY BUSHING 5' A.G.L.
Drilling Measured From KELLY BUSHING
Elevation
K.B. 2755
D.F. 2753
G.L. 2750

Date	7/7/12
Run Number	ONE
Depth Driller	4625
Depth Logger	4626
Bottom Logged Interval	4624
Top Log Interval	00
Casing Driller	8 5/8" @ 220
Casing Logger	218
Bit Size	7 7/8
Type Fluid in Hole	CHEMICAL MUD
Density / Viscosity	9.3/60
pH / Fluid Loss	9.0/8.4
Source of Sample	FLOWLINE
Rin @ Meas. Temp	1.0 @ 89F
Rmf @ Meas. Temp	.75 @ 89F
Rmc @ Meas. Temp	1.20 @ 89F
Source of Rmf / Rmc	MEASURED
Rin @ BHT	.72 @ 122F
Time Circulation Stopped	2 HOURS
Time Logger on Bottom	
Maximum Recorded Temperature	122F
Equipment Number	680
Location	HAYS, KS.
Recorded By	JASON CAPPELLUCCI
Witnessed By	SEAN DEENIHAN

<<< Fold Here >>>

All interpretations are opinions based on inferences from electrical or other measurements and we cannot and do not guarantee the accuracy or correctness of any interpretation, and we shall not, except in the case of gross or willful negligence on our part, be liable or responsible for any loss, costs, damages, or expenses incurred or sustained by anyone resulting from any interpretation made by any of our officers, agents or employees. These interpretations are also subject to our general terms and conditions set out in our current Price Schedule.

Comments

THANK YOU FOR USING SUPERIOR WELL SERVICE (785) 628-6395
DIRECTIONS
GOVE, KS. - 10 S. TO RD I. - 9 W. - 1 S. - E. INTO



SUPERIOR
Hays,
Kansas

MAIN SECTION

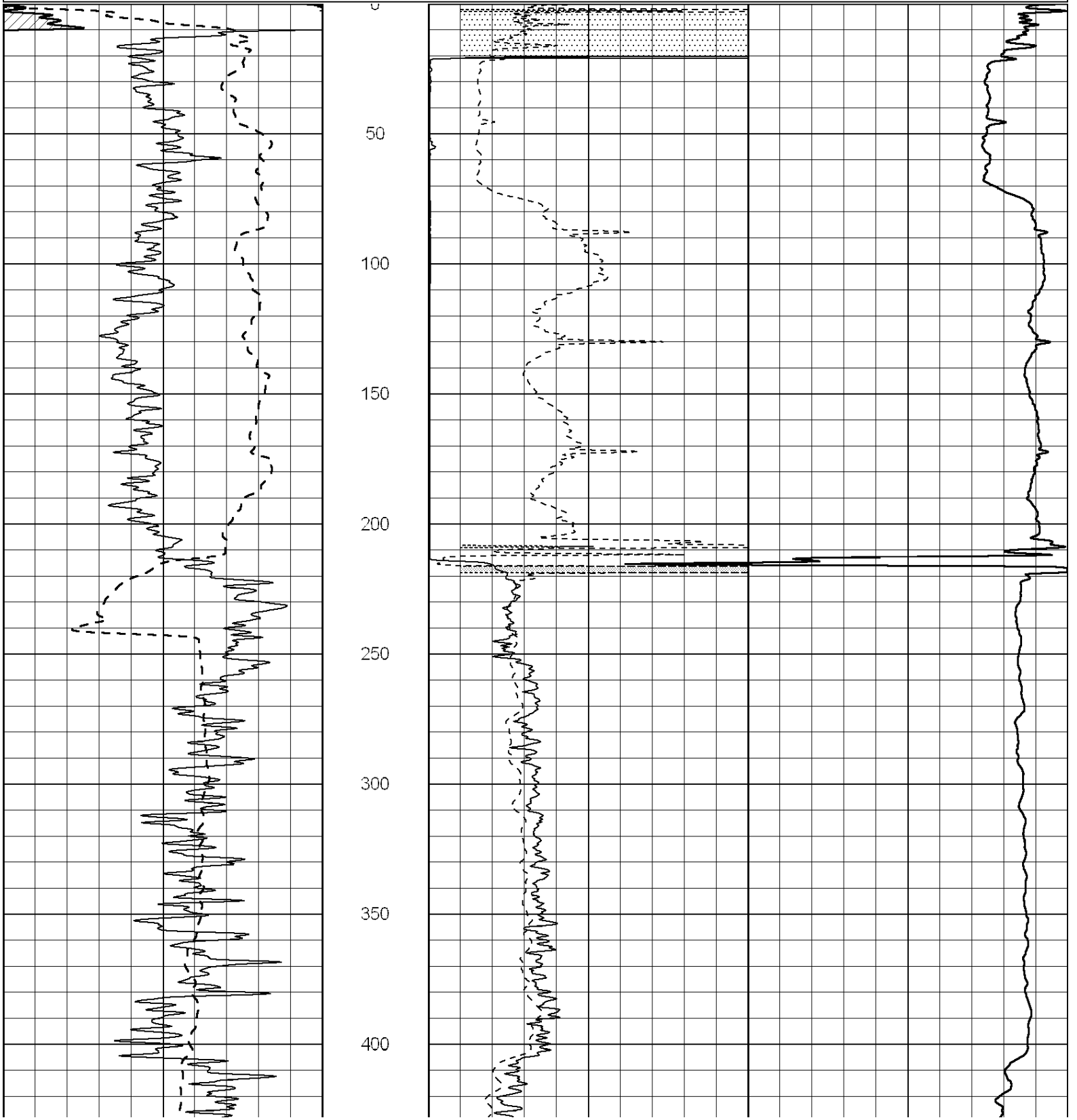
Database File: 009460pe.db
 Dataset Pathname: pass3.2
 Presentation Format: _dil2
 Dataset Creation: Sat Jul 07 08:48:52 2012 by Calc Open-Cased 090629
 Charted by: Depth in Feet scaled 1:600

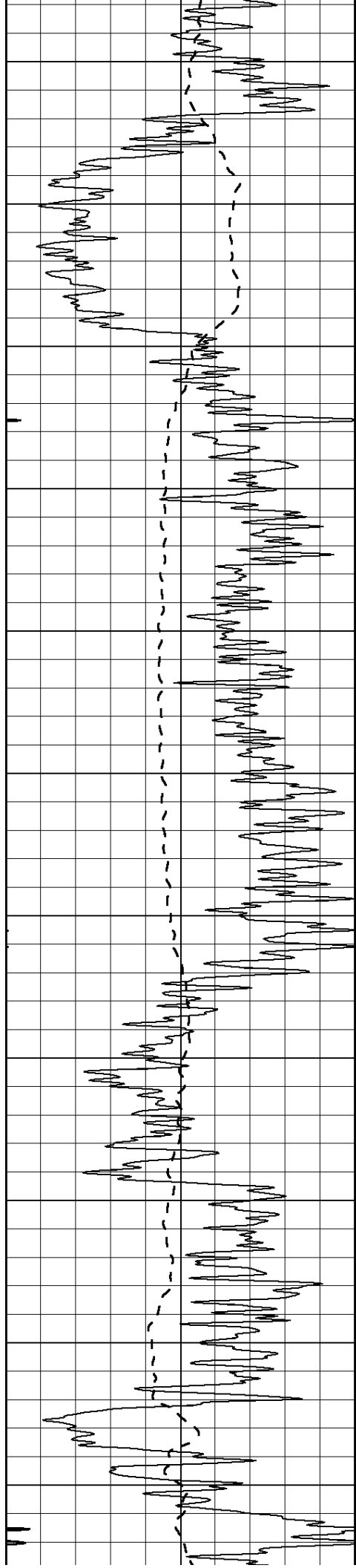
0	Gamma Ray (GAPI)	150
-100	SP (mV)	100

0	RLL3 (Ohm-m)	50
0	Deep Induction (Ohm-m)	50

1000	CILD (mmho/m)	0
------	---------------	---

50	RILD X10 (Ohm-m)	500
50	RLL3 X10 (Ohm-m)	500





450

500

550

600

650

700

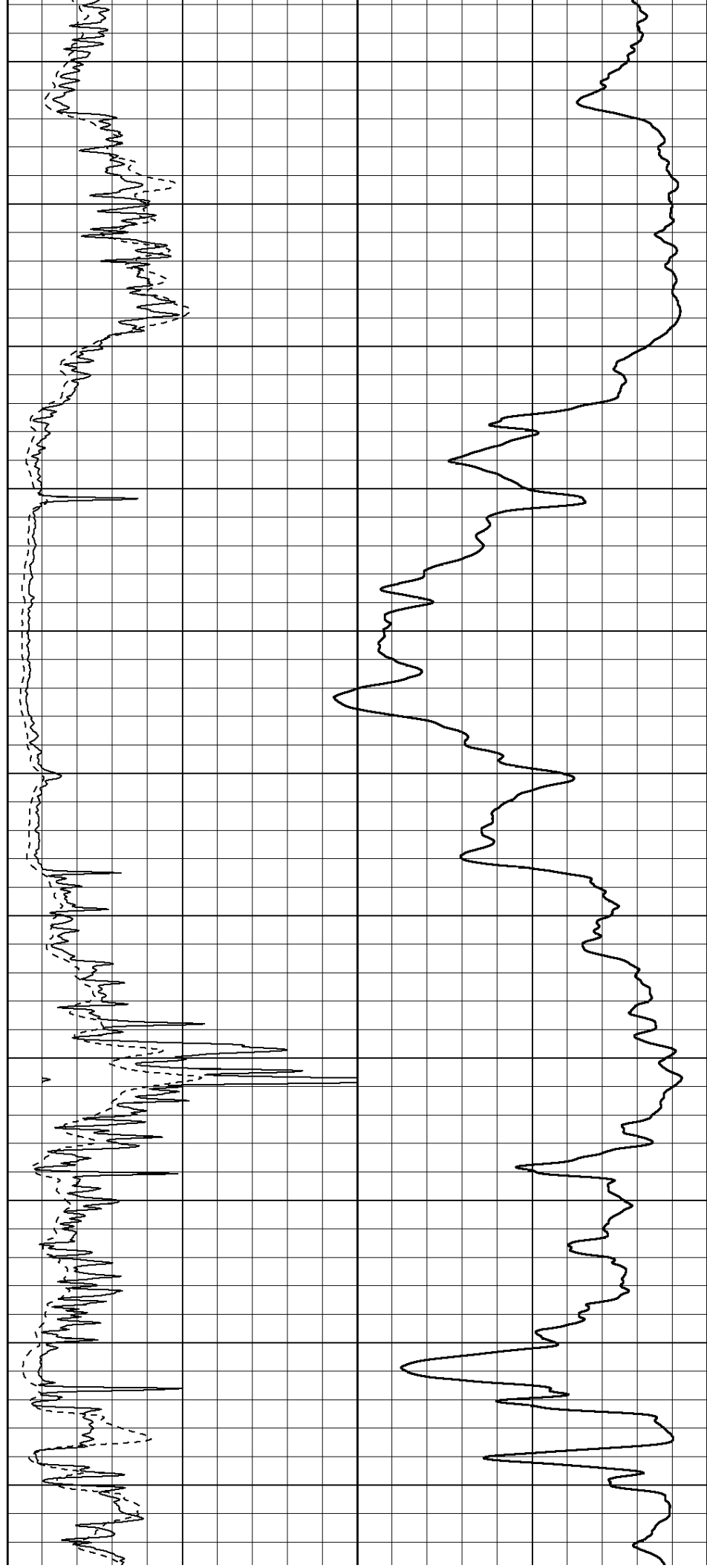
750

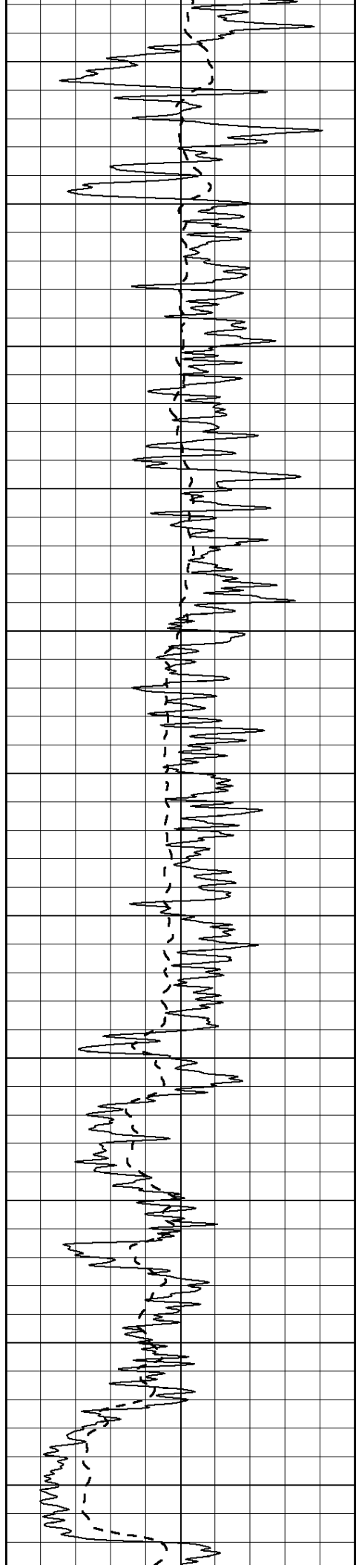
800

850

900

950





1000

1050

1100

1150

1200

1250

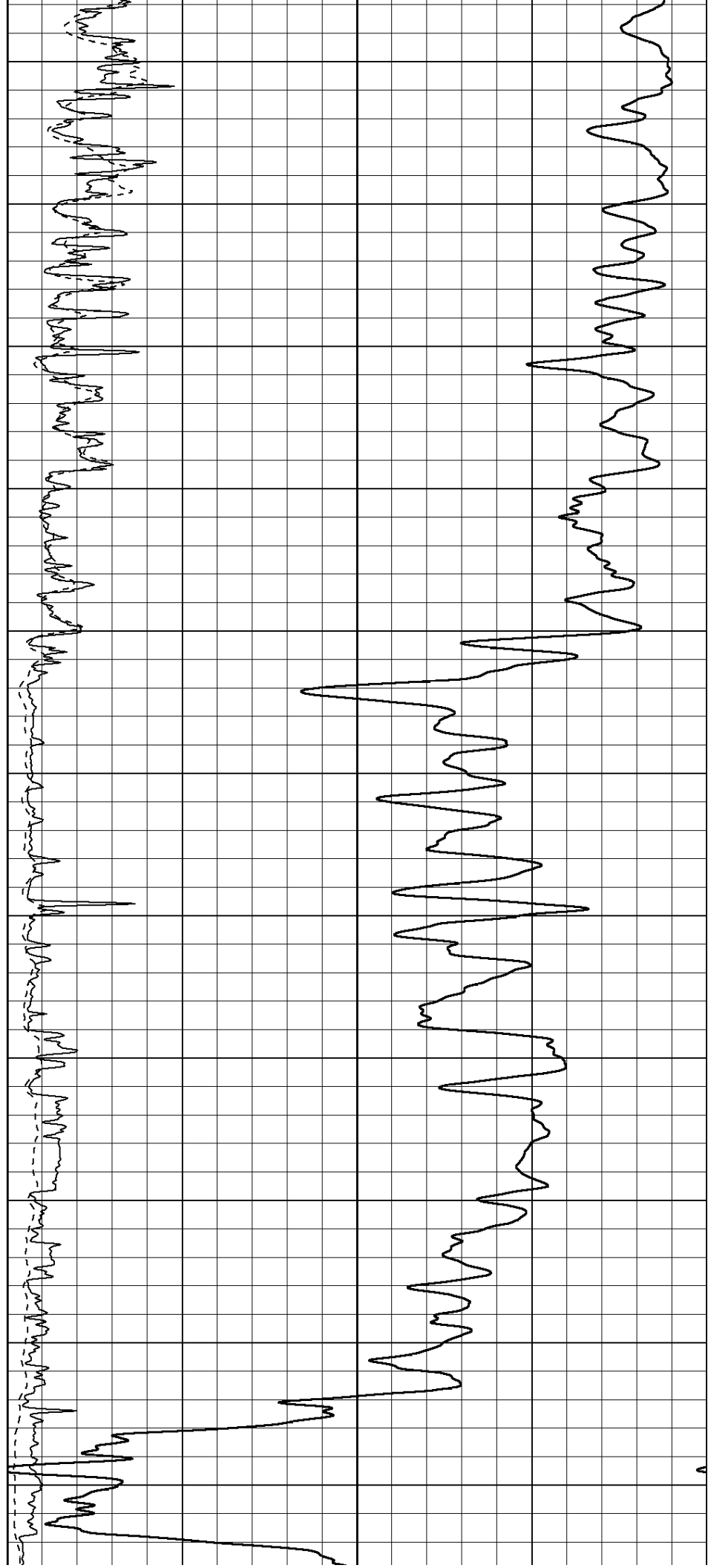
1300

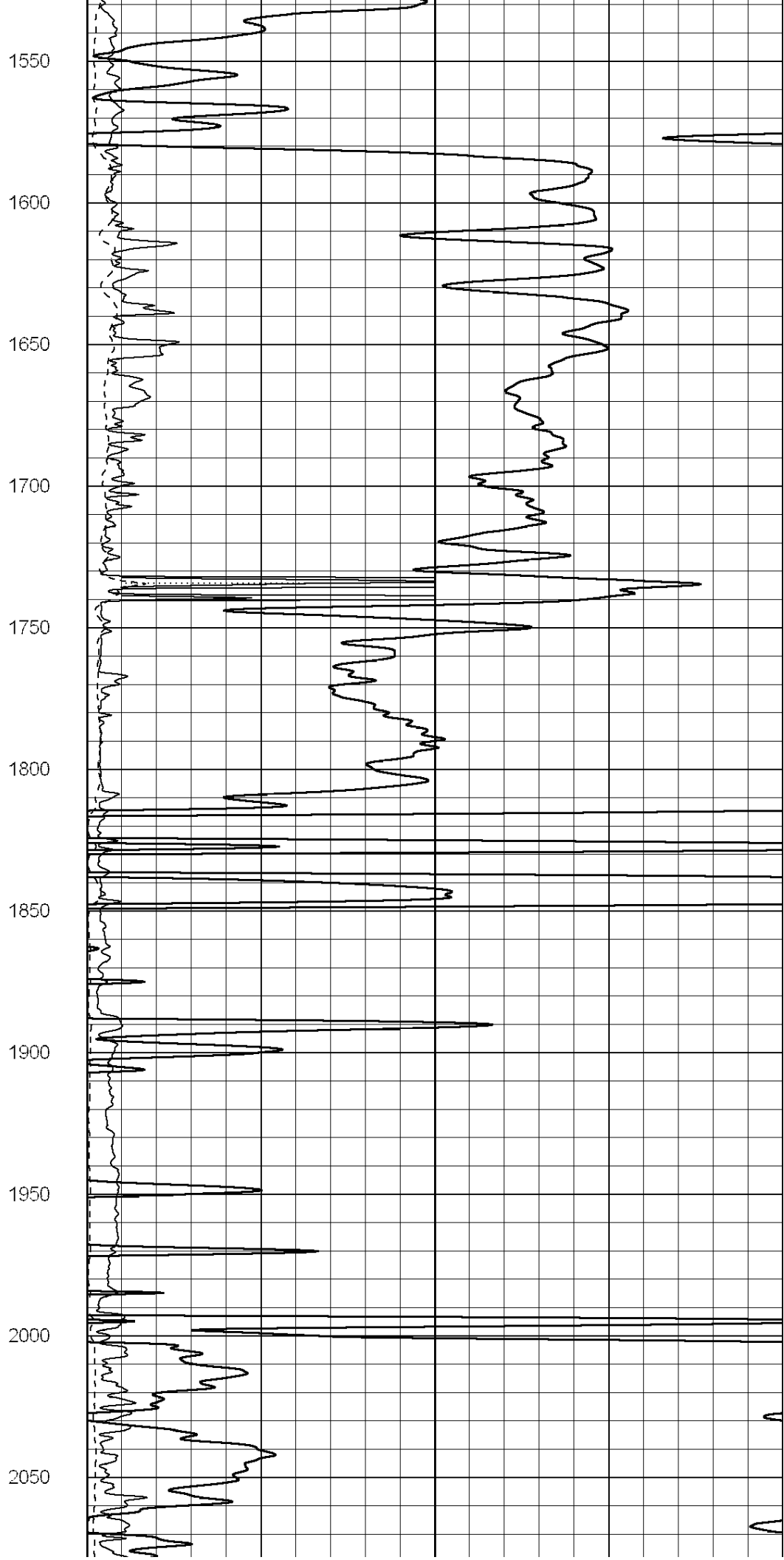
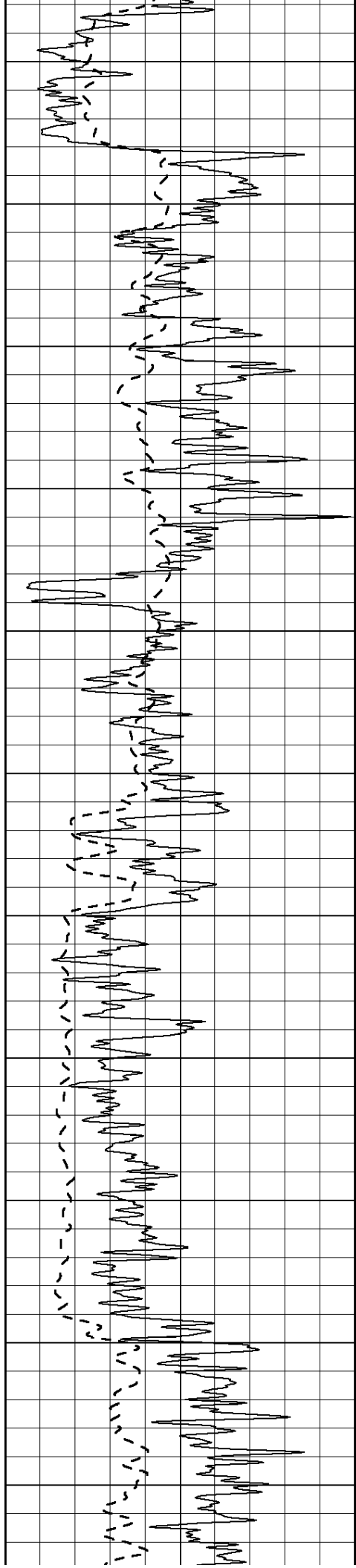
1350

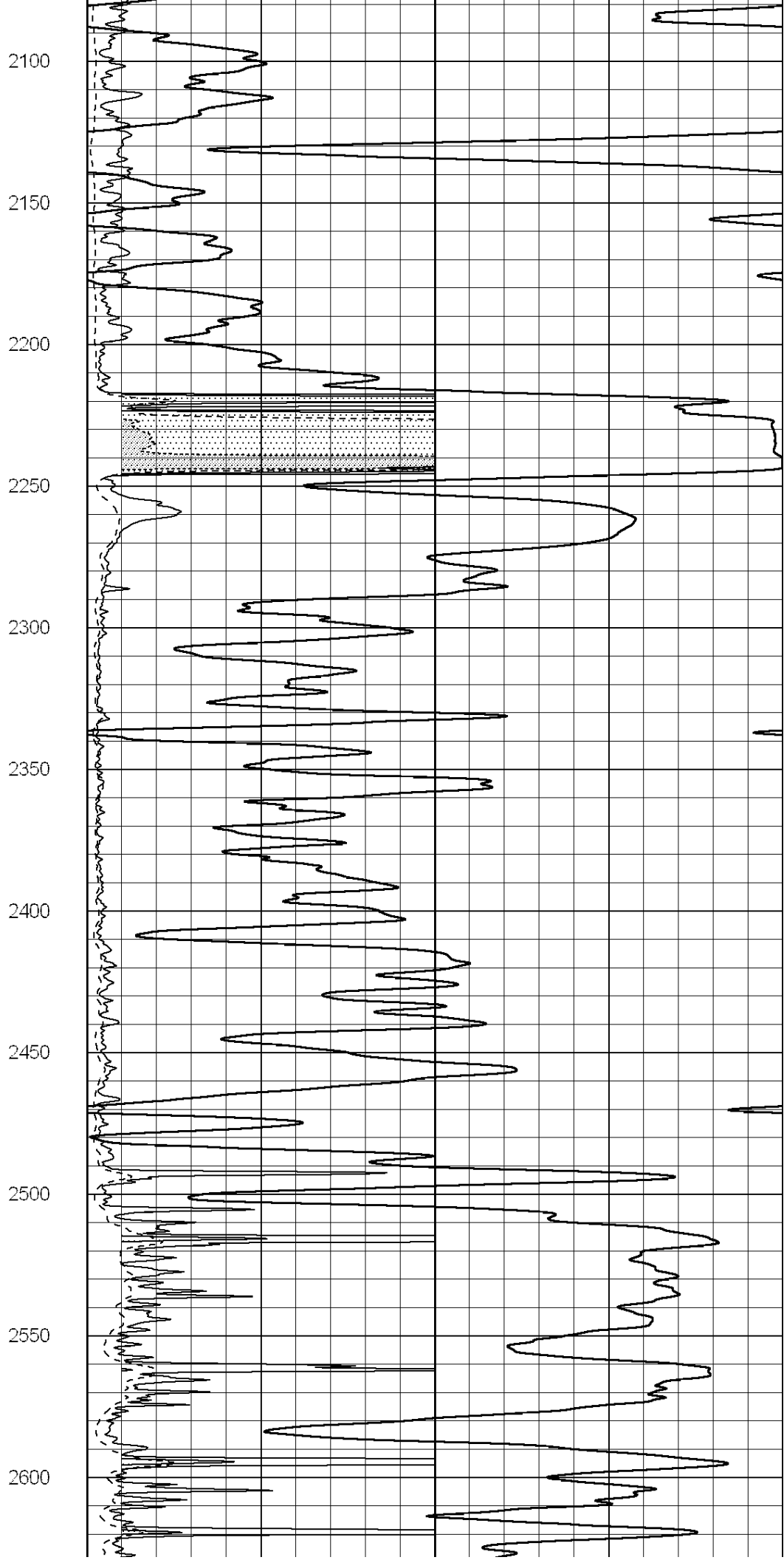
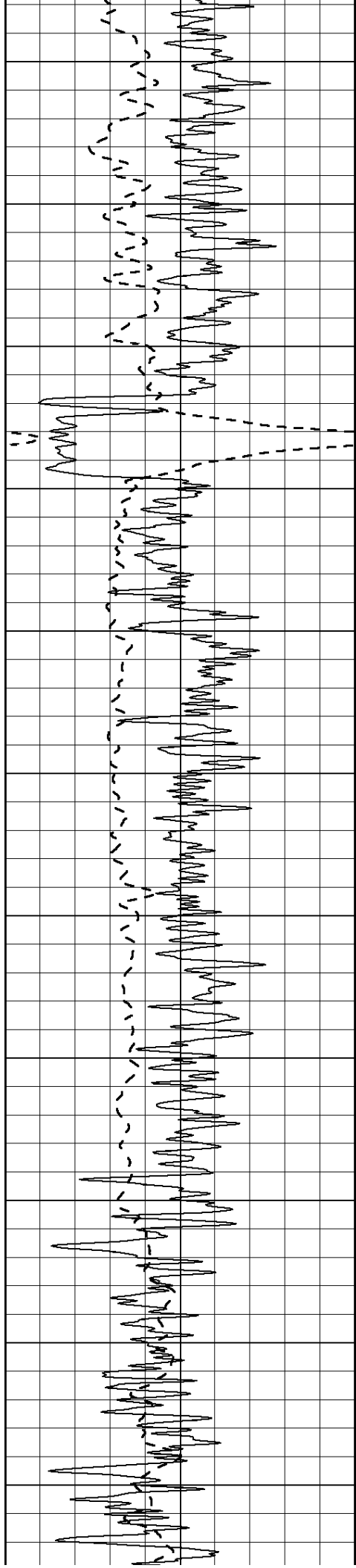
1400

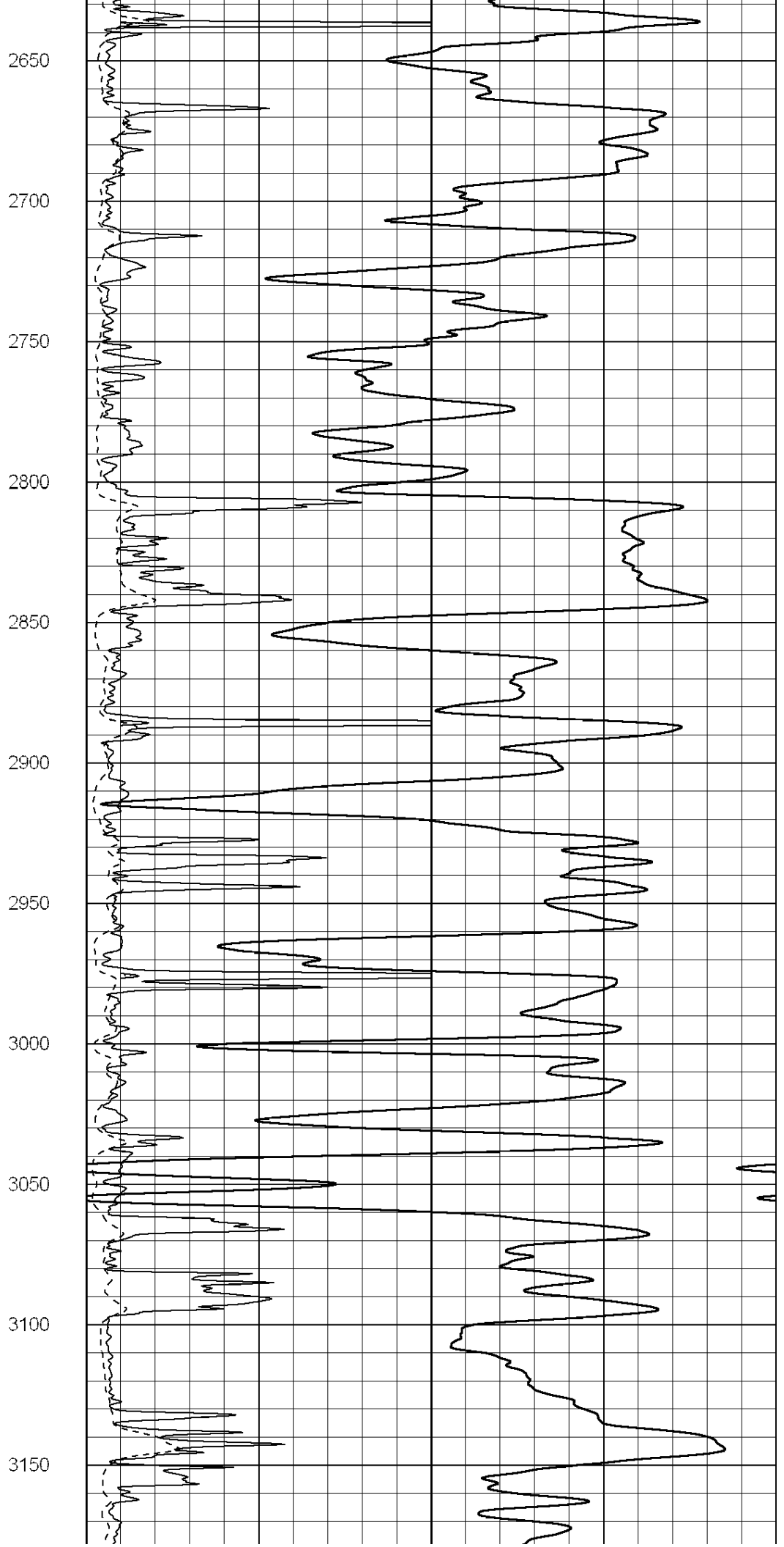
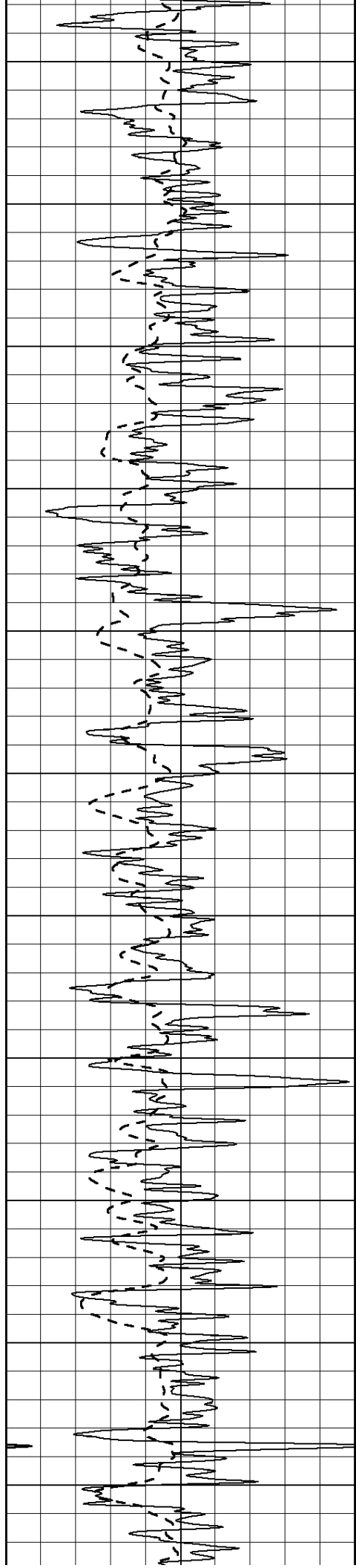
1450

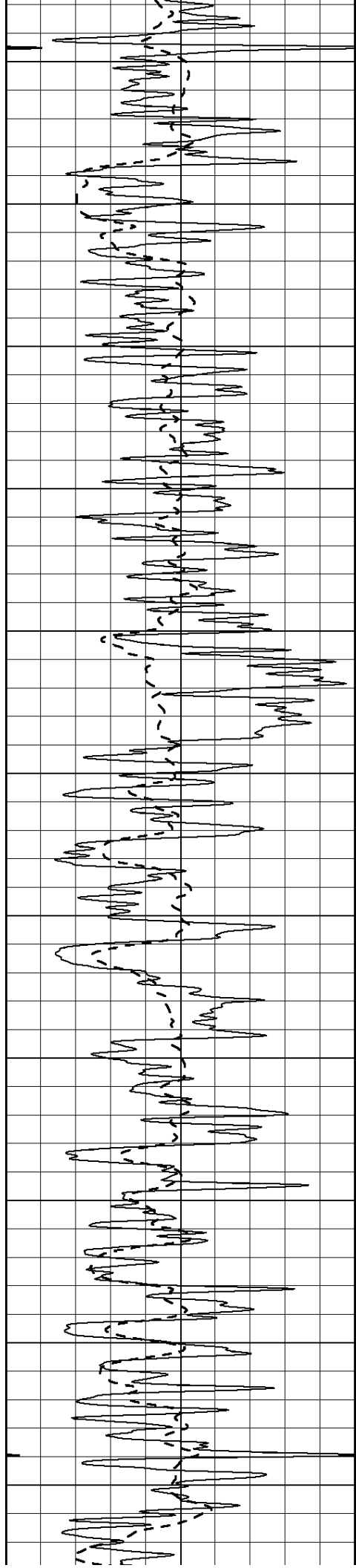
1500











3200

3250

3300

3350

3400

3450

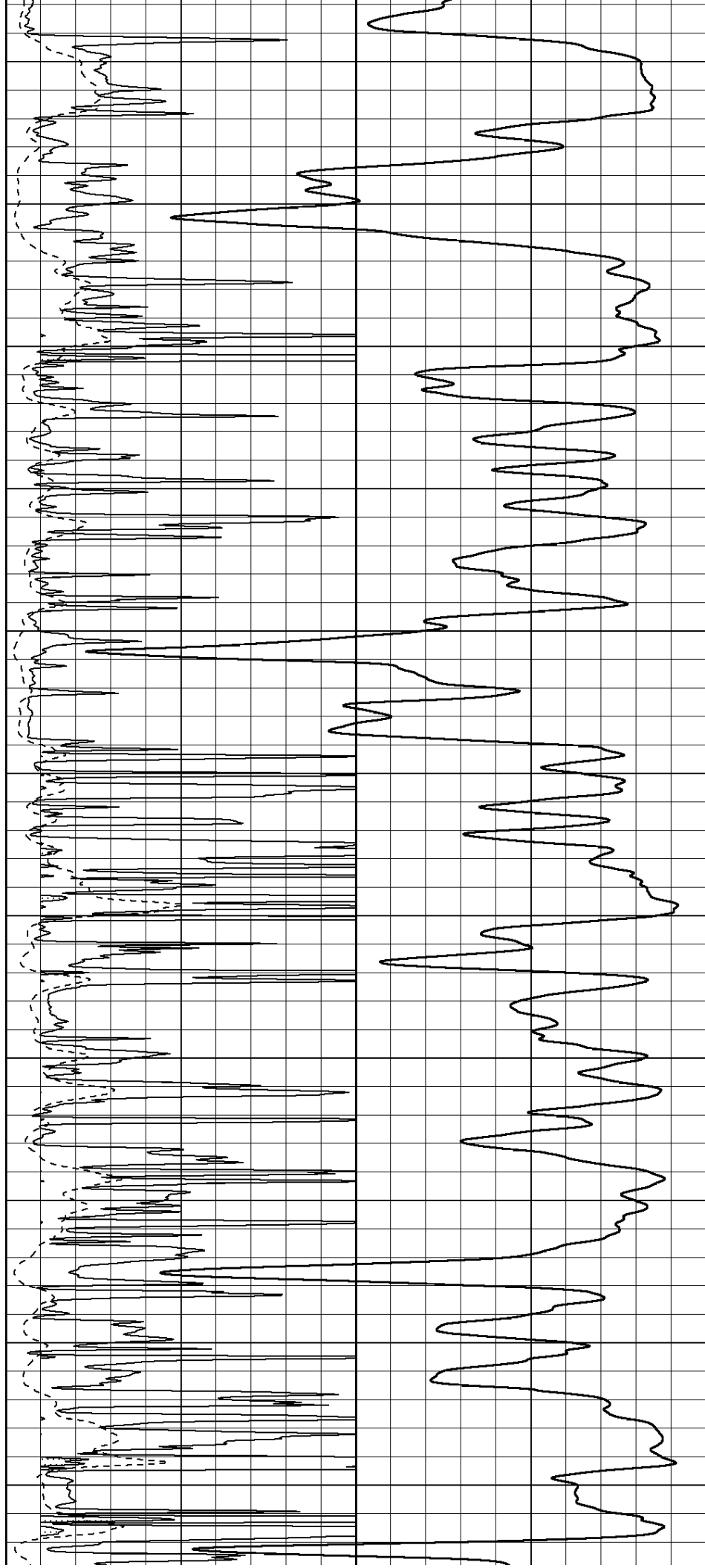
3500

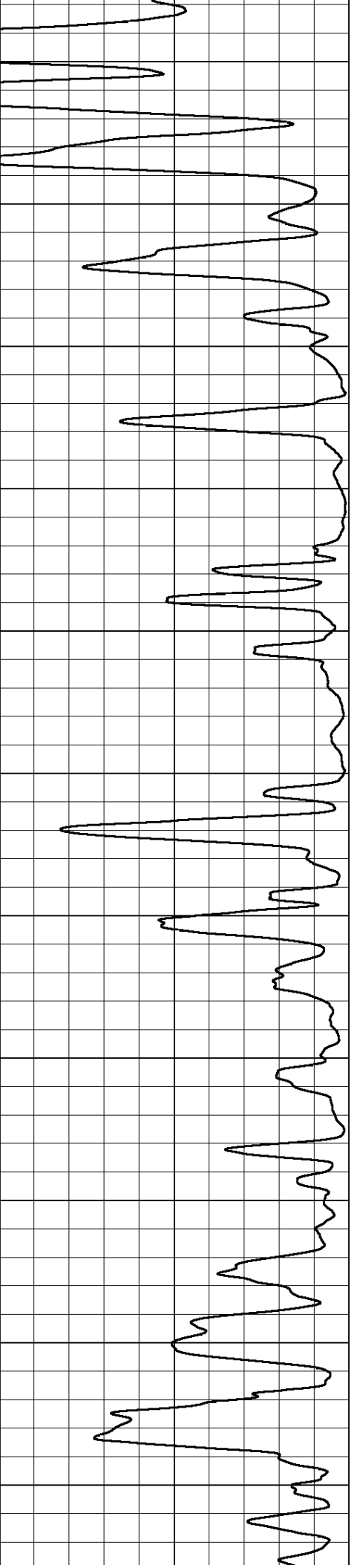
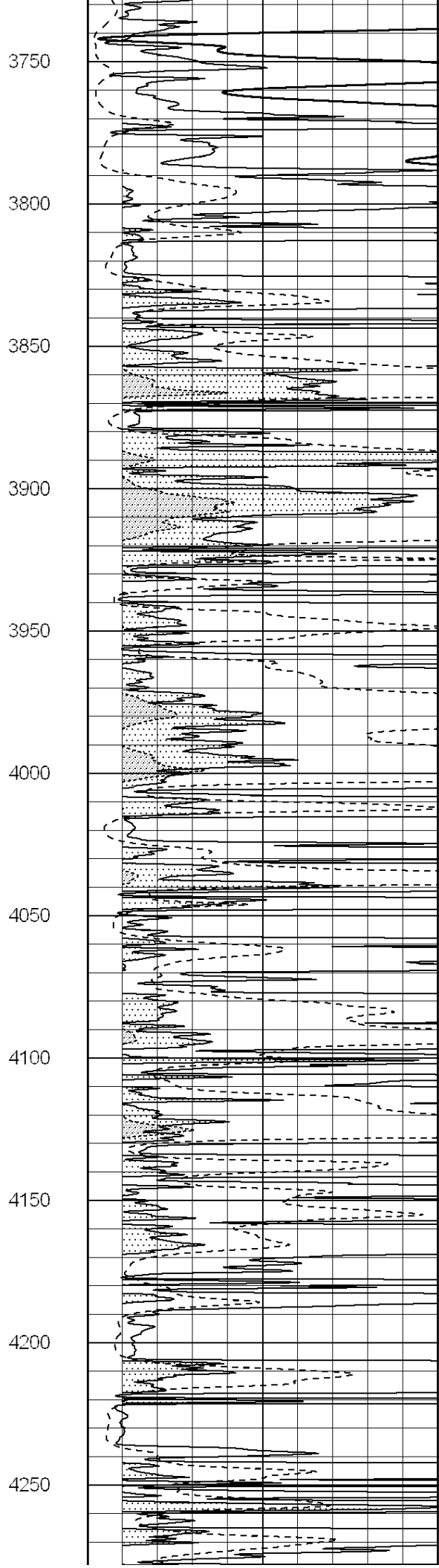
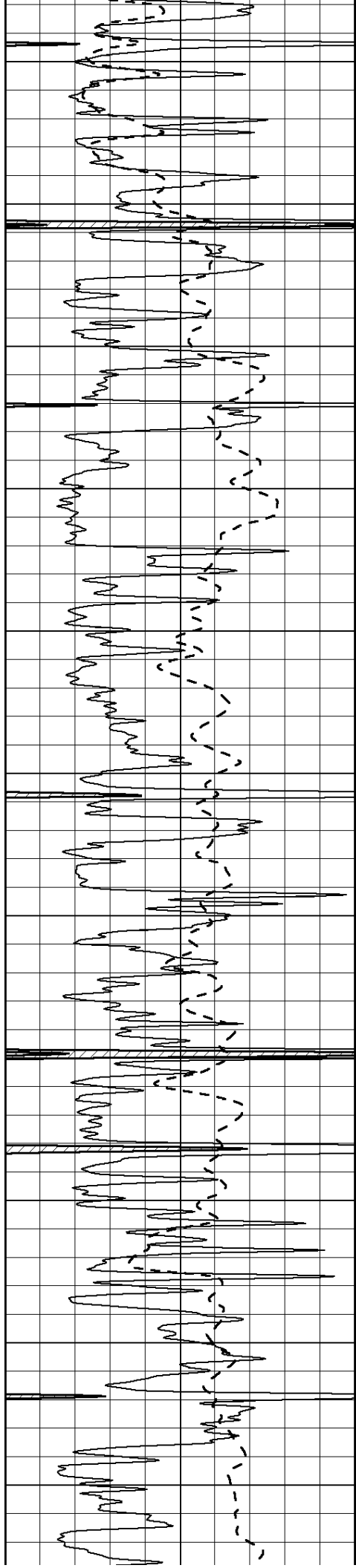
3550

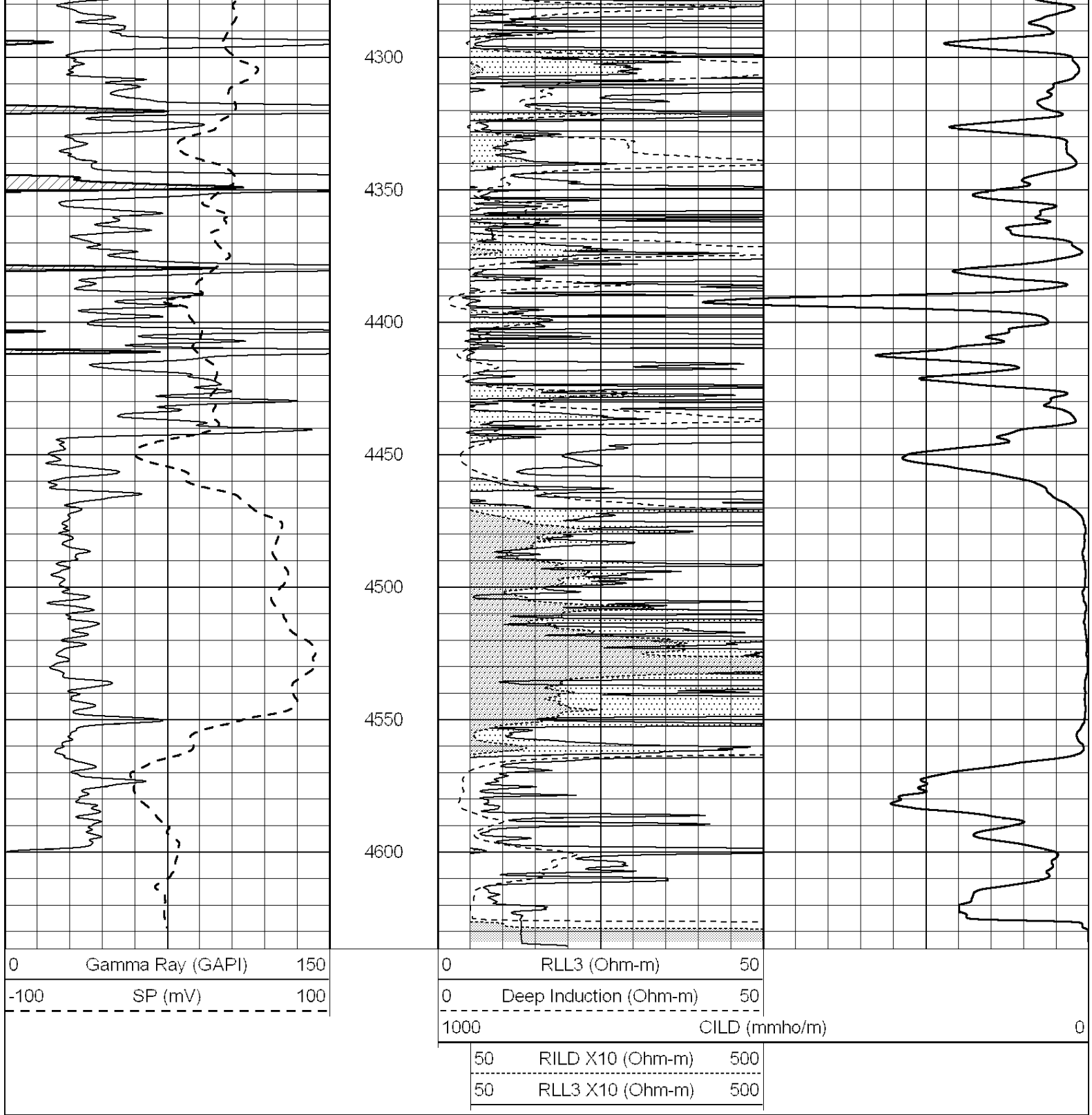
3600

3650

3700







SUPERIOR
Hays,
Kansas

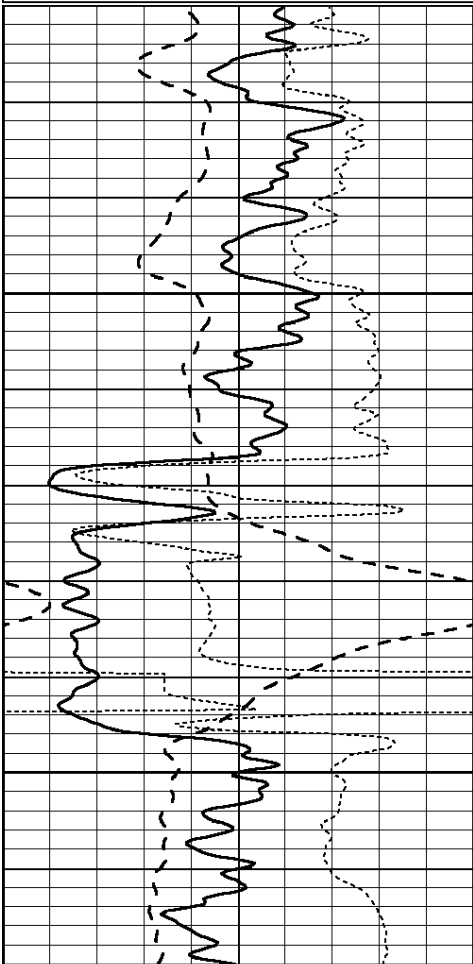
ANHYDRITE

Database File: 009460pe.db
 Dataset Pathname: pass3.3
 Presentation Format: _dil
 Dataset Creation: Sat Jul 07 08:11:41 2012 by Calc Open-Cased 090629
 Charted by: Depth in Feet scaled 1:240



-100	SP (mV)	100
-250	Rxo/Rt	50

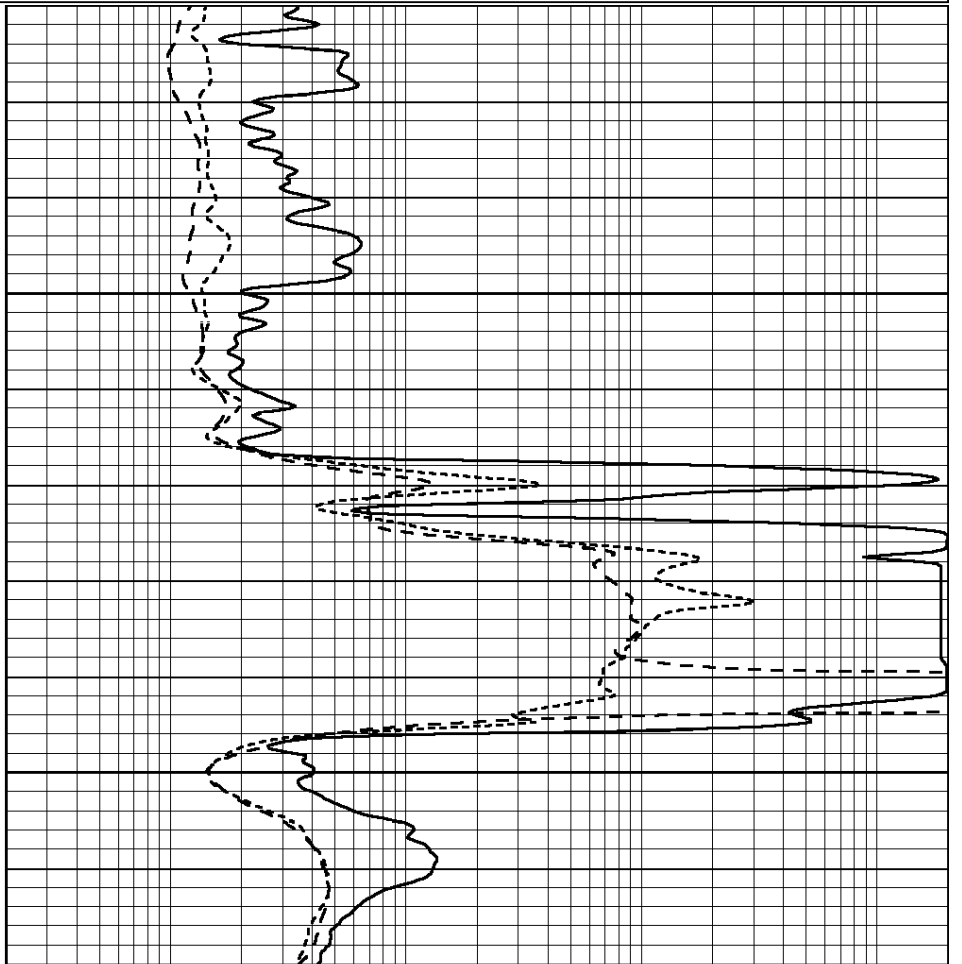
0.2	MEDIUM INDUCTION (Ohm-m)	2000
0.2	DEEP INDUCTION (Ohm-m)	2000



2200

2250

0	GAMMA RAY (GAPI)	150
-100	SP (mV)	100
-250	Rxo/Rt	50



0.2	SHALLOW GUARD (Ohm-m)	2000
0.2	MEDIUM INDUCTION (Ohm-m)	2000
0.2	DEEP INDUCTION (Ohm-m)	2000



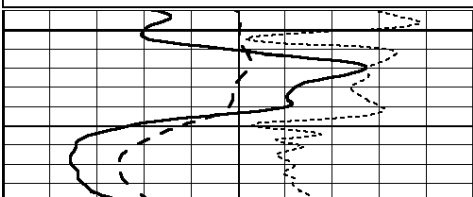
SUPERIOR
Hays,
Kansas

MAIN SECTION

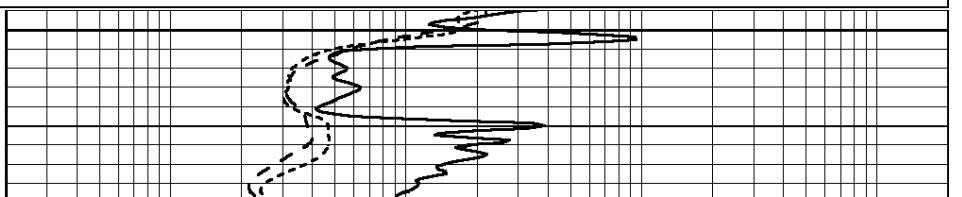
Database File: 009460pe.db
 Dataset Pathname: pass3.1
 Presentation Format: _dil
 Dataset Creation: Sat Jul 07 08:11:19 2012 by Calc Open-Cased 090629
 Charted by: Depth in Feet scaled 1:240

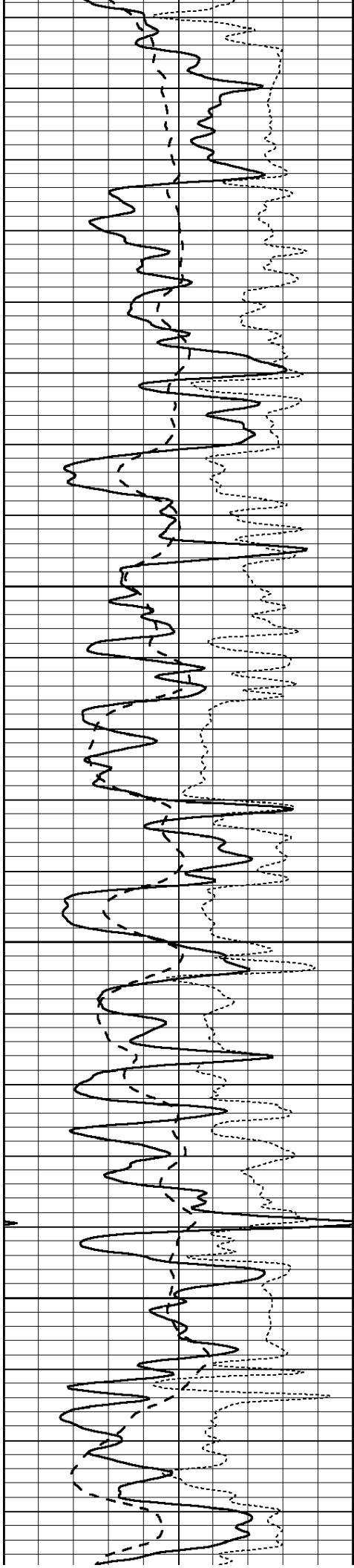
0	GAMMA RAY (GAPI)	150
-100	SP (mV)	100
-250	Rxo/Rt	50

0.2	SHALLOW GUARD (Ohm-m)	2000
0.2	MEDIUM INDUCTION (Ohm-m)	2000
0.2	DEEP INDUCTION (Ohm-m)	2000



3500



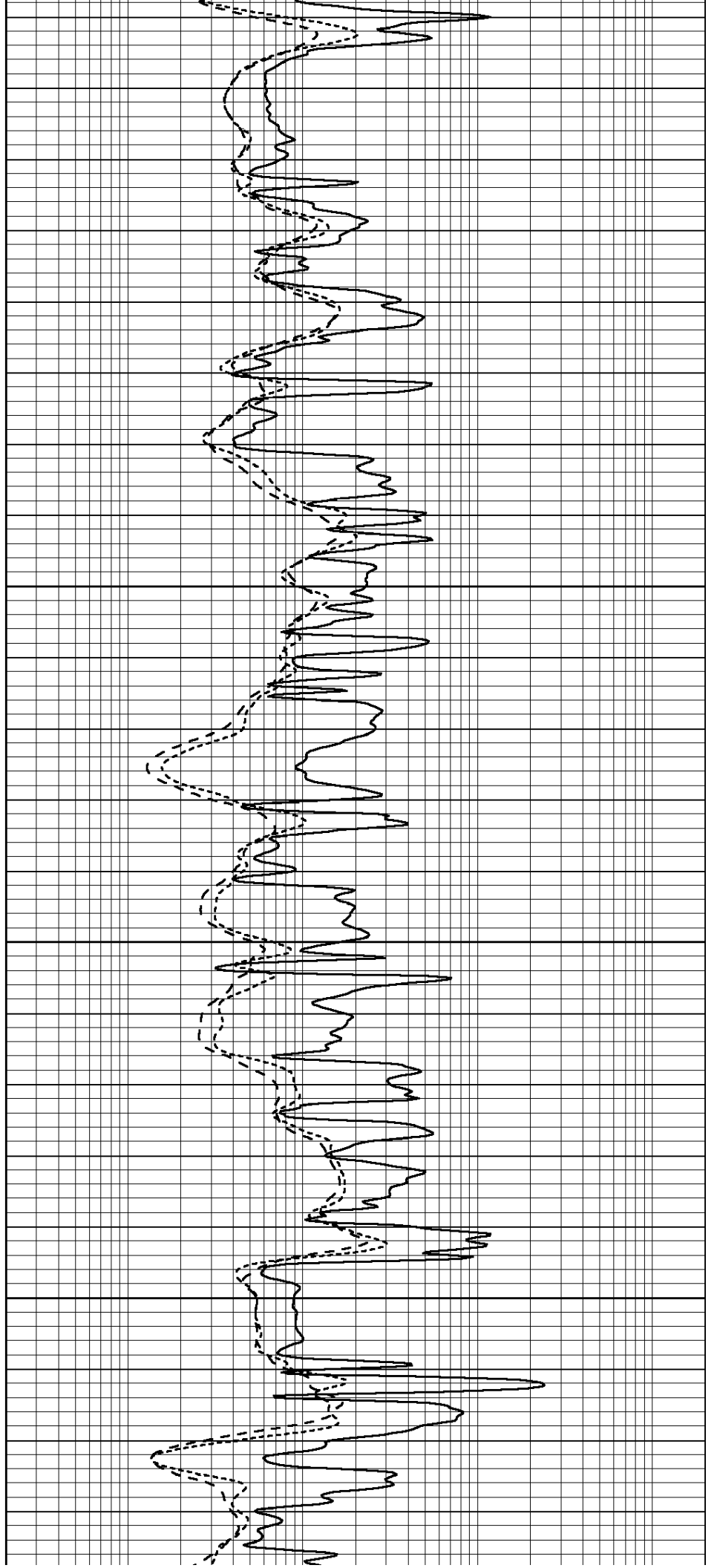


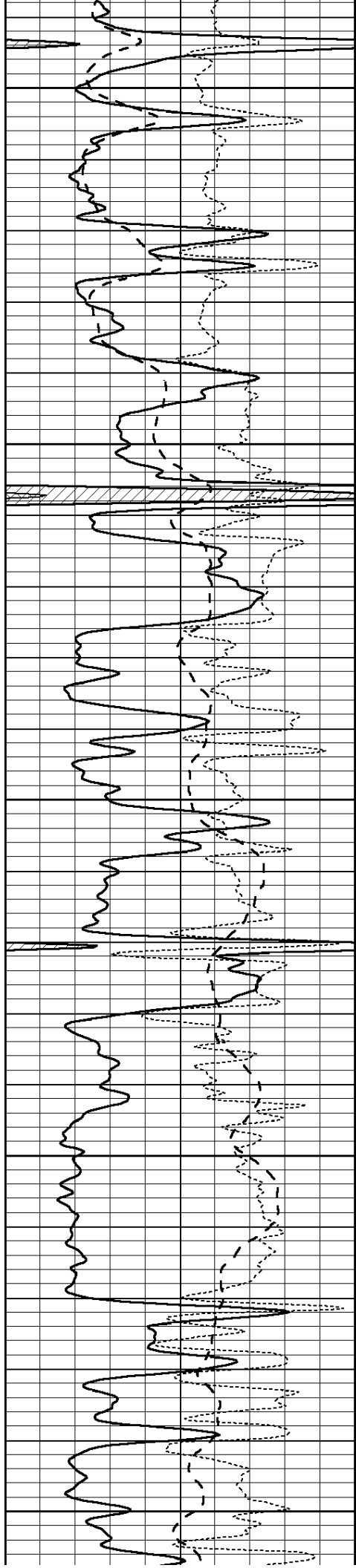
3550

3600

3650

3700





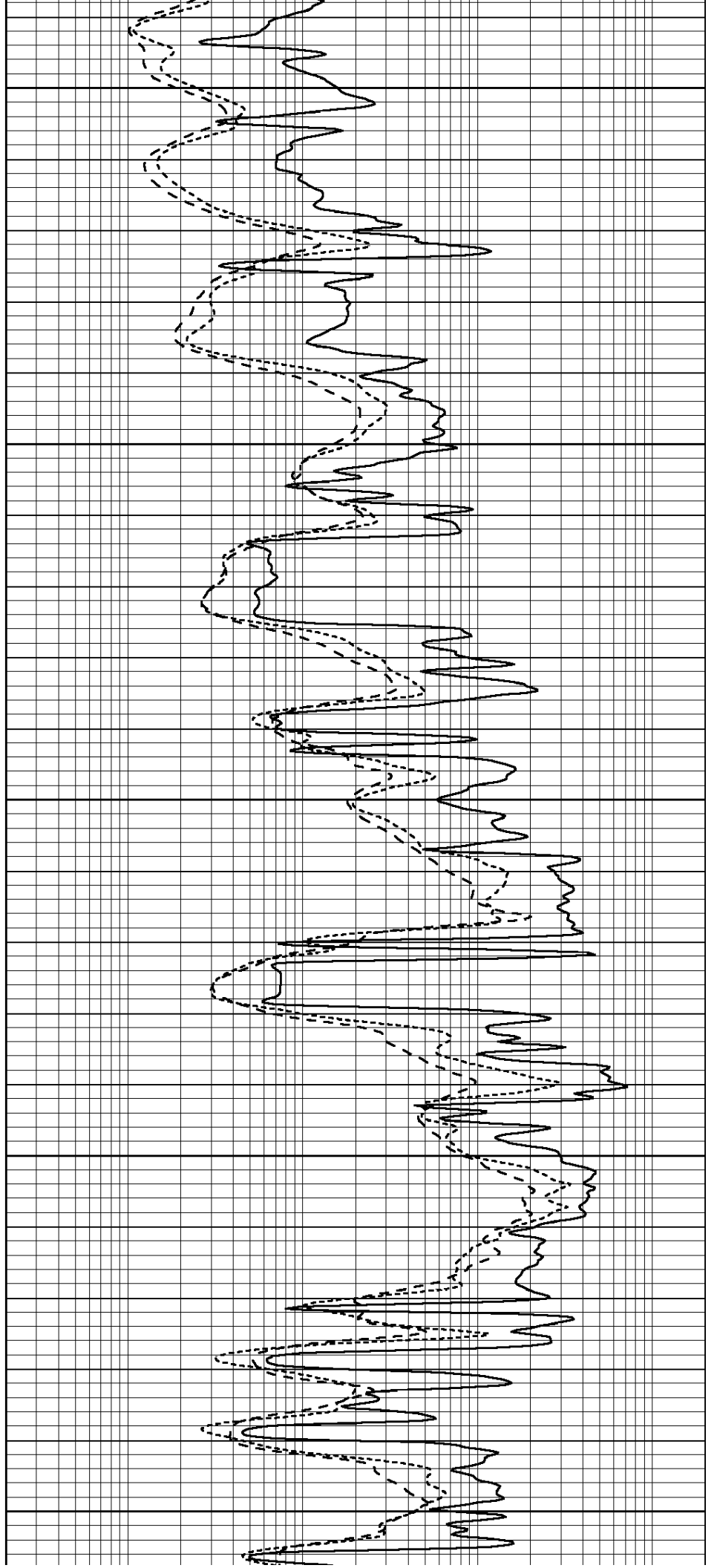
3750

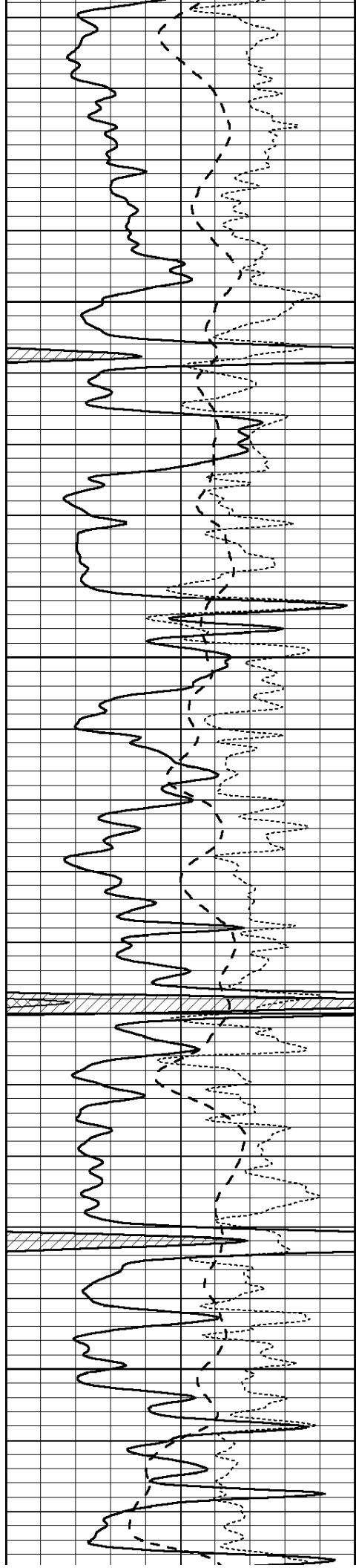
3800

3850

3900

3950



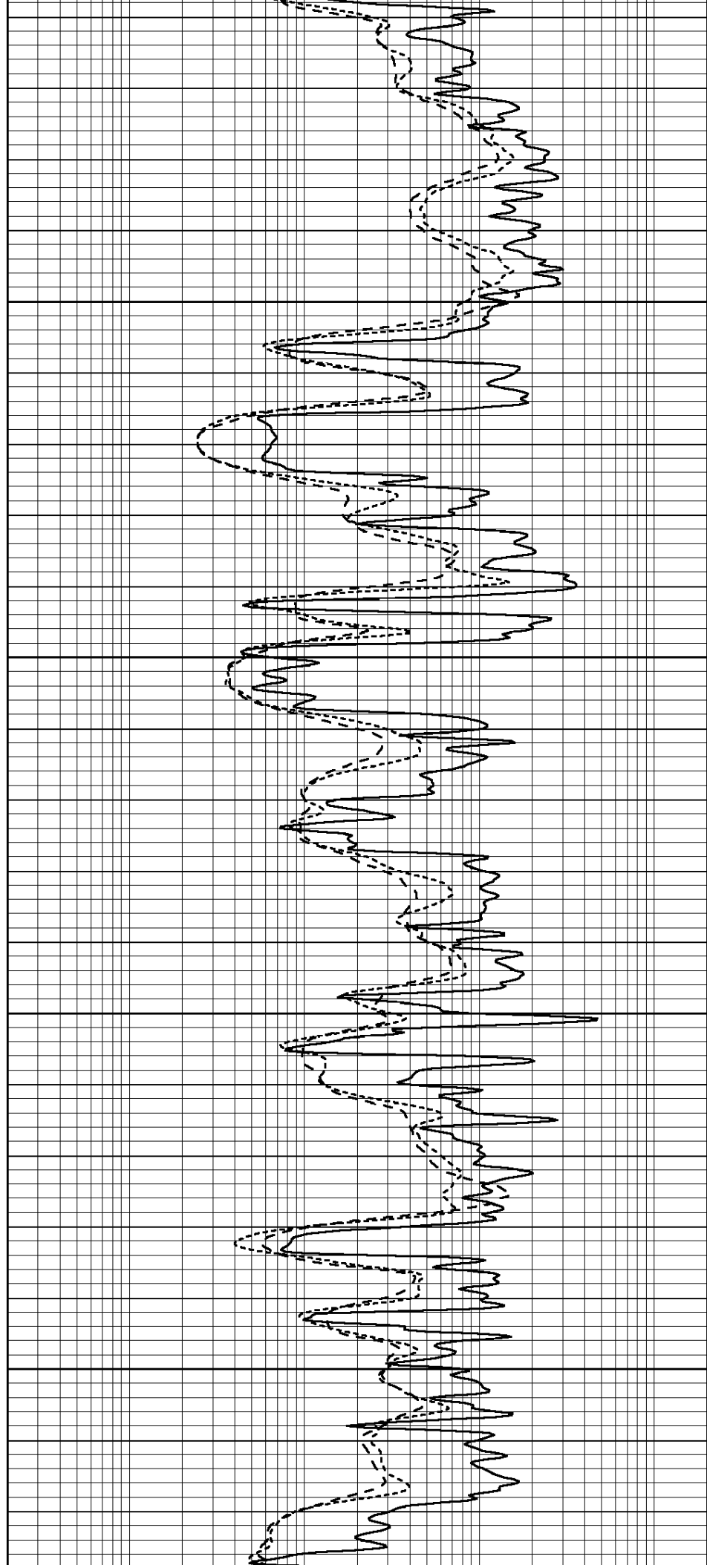


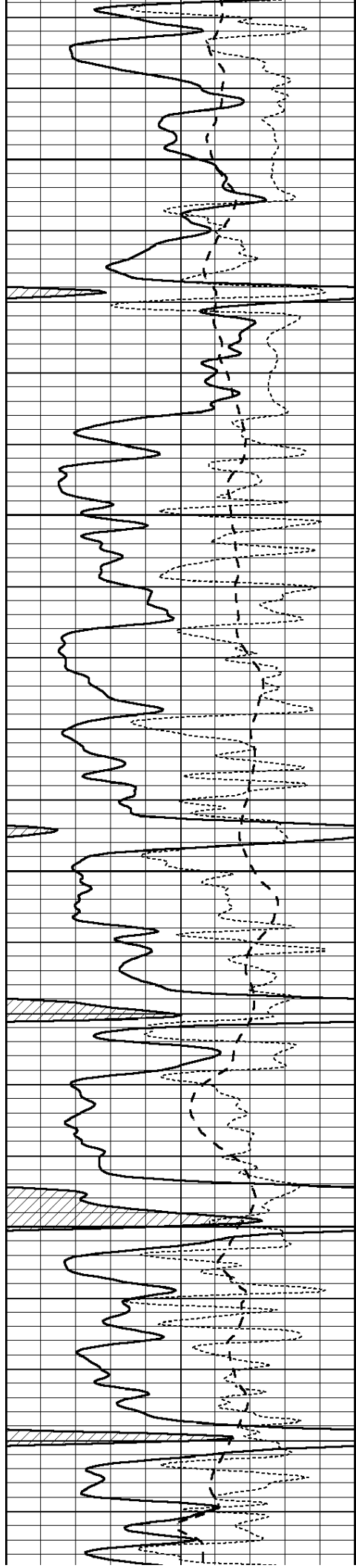
4000

4050

4100

4150



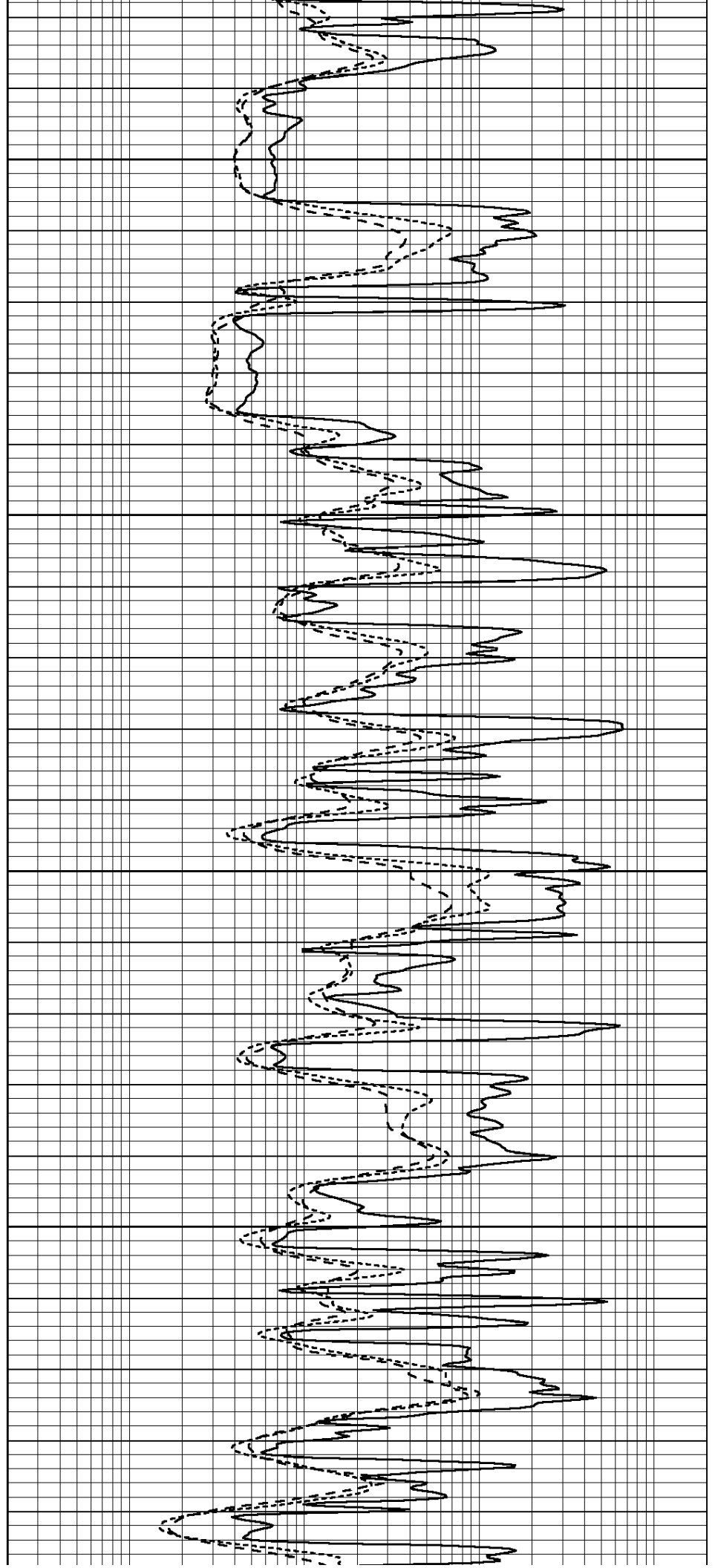


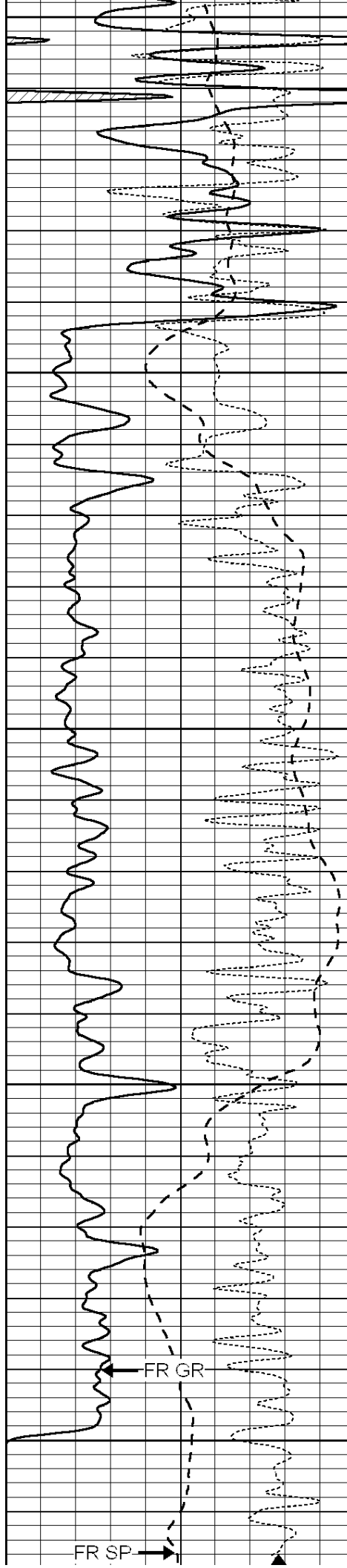
4200

4250

4300

4350





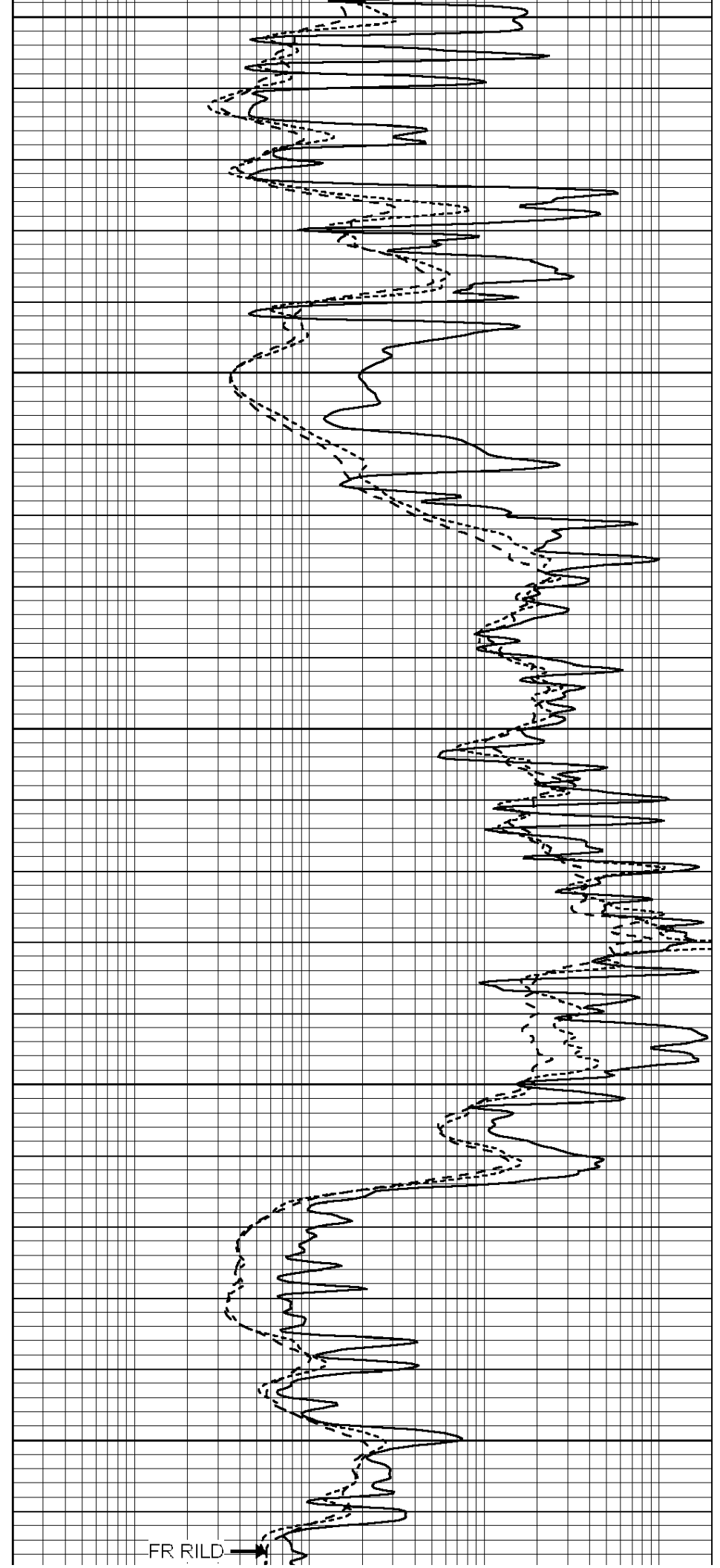
4400

4450

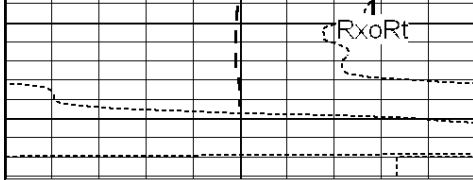
4500

4550

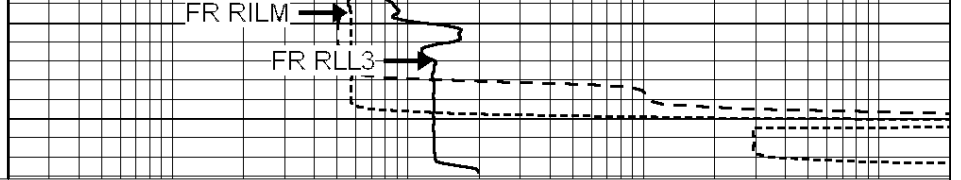
4600



FR RILD



LTD 4626



0	GAMMA RAY (GAPI)	150
-100	SP (mV)	100
-250	Rxo/Rt	50

0.2	SHALLOW GUARD (Ohm-m)	2000
0.2	MEDIUM INDUCTION (Ohm-m)	2000
0.2	DEEP INDUCTION (Ohm-m)	2000



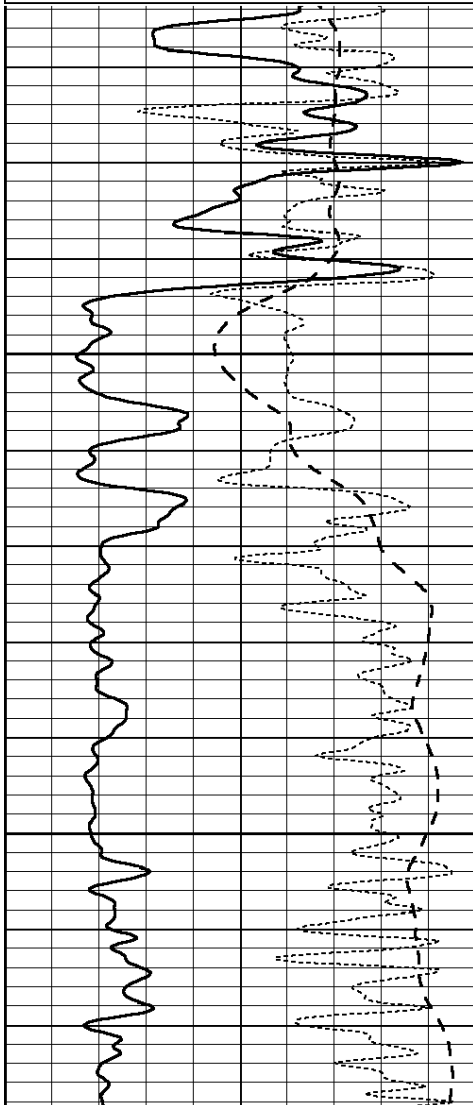
SUPERIOR
Hays,
Kansas

REPEAT SECTION

Database File: 009460pe.db
 Dataset Pathname: pass2.1
 Presentation Format: _dil
 Dataset Creation: Sat Jul 07 08:13:34 2012 by Calc Open-Cased 090629
 Charted by: Depth in Feet scaled 1:240

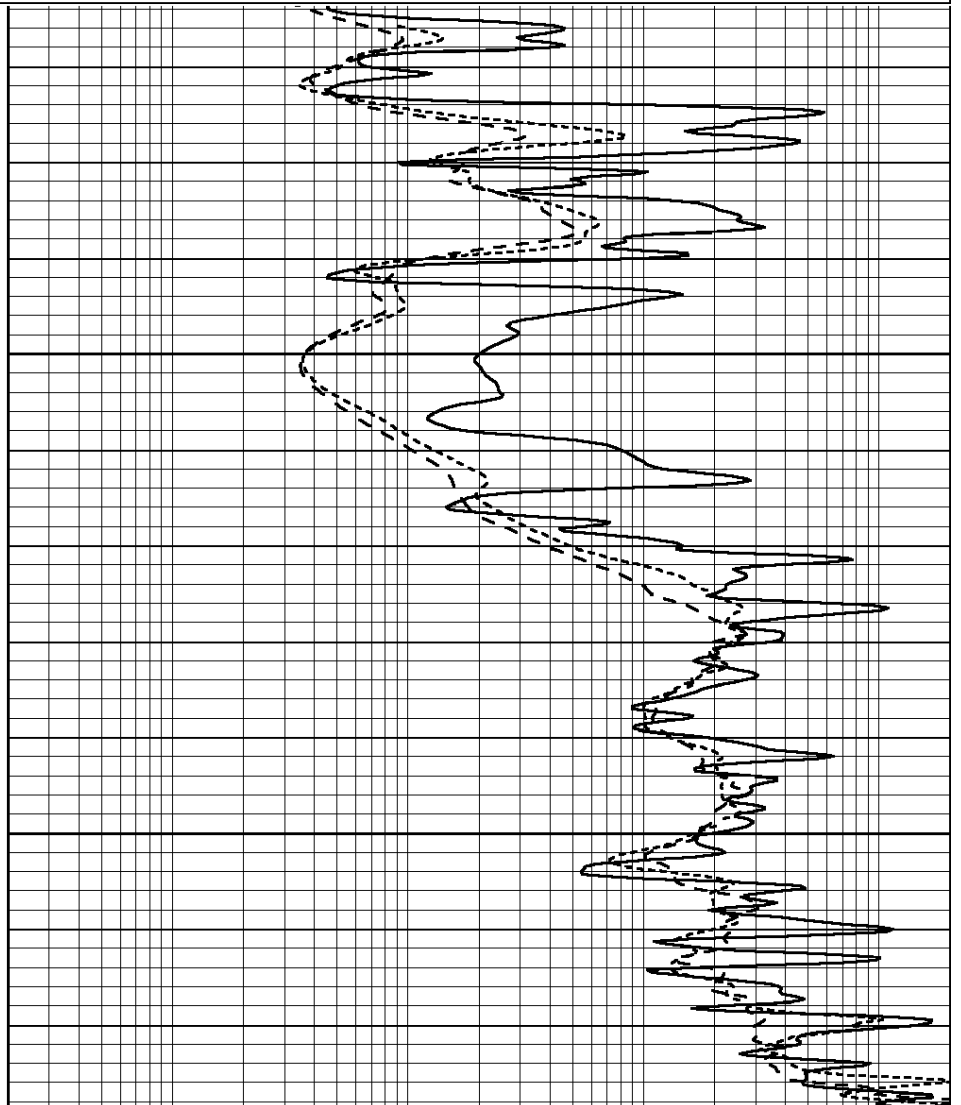
0	GAMMA RAY (GAPI)	150
-100	SP (mV)	100
-250	Rxo/Rt	50

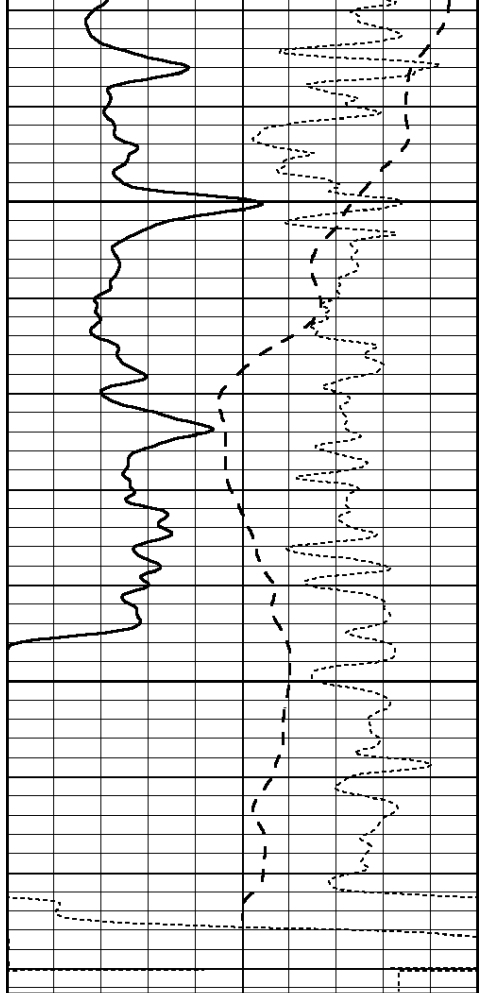
0.2	SHALLOW GUARD (Ohm-m)	2000
0.2	MEDIUM INDUCTION (Ohm-m)	2000
0.2	DEEP INDUCTION (Ohm-m)	2000



4450

4500

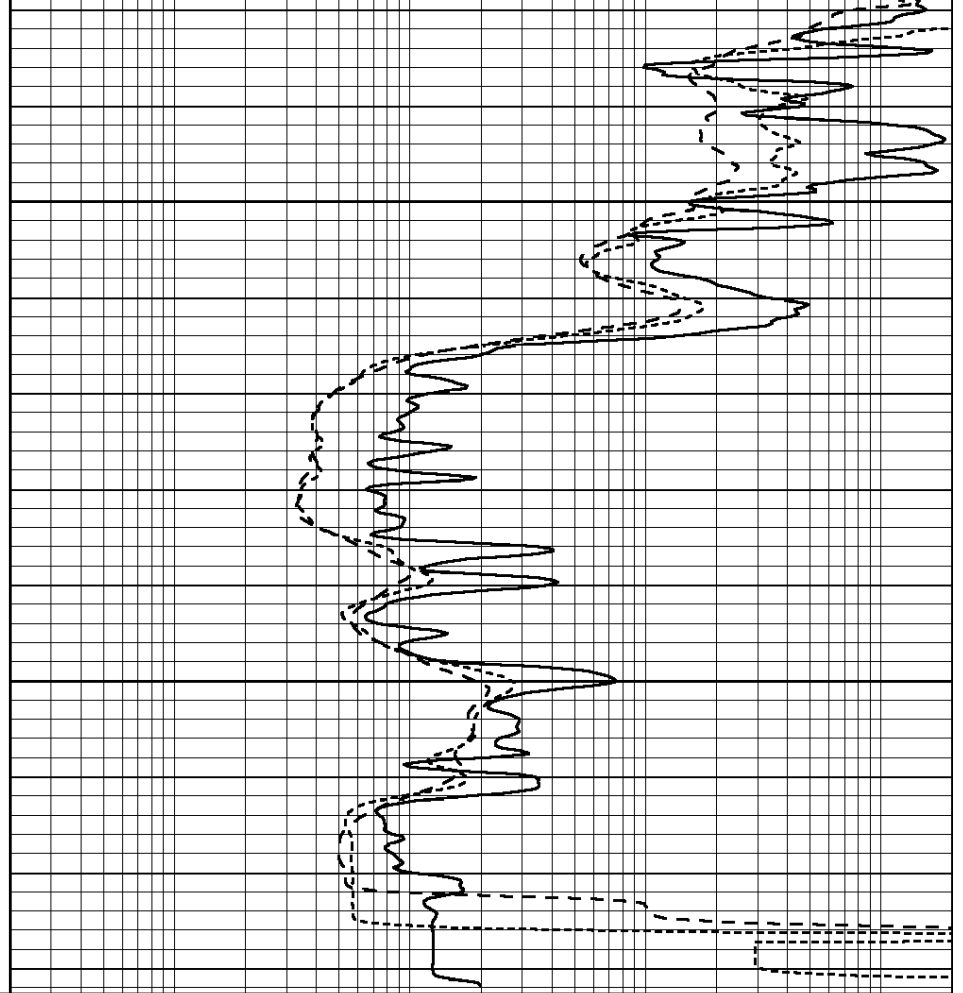




0	GAMMA RAY (GAPI)	150
-100	SP (mV)	100
-250	Rxo/Rt	50

4550

4600



0.2	SHALLOW GUARD (Ohm-m)	2000
0.2	MEDIUM INDUCTION (Ohm-m)	2000
0.2	DEEP INDUCTION (Ohm-m)	2000