



SUPERIOR
Hays,
Kansas

**COMPENSATED
DENSITY / NEUTRON
LOG**

Company	RITCHIE EXPLORATION, INC.	
Well	#1 LAMPE - HESKAMP	
Field	WILDCAT	
County	FORD	State KANSAS
Location:	AP1 # : 15-057-20794-0000	Other Services
	2780' FSL & 33F' FWL	DIL
	SEC 3 TWP 26S RGE 22W	
Permanent Datum	GROUND LEVEL	Elevation 2406
Log Measured From	KELLY BUSHING 11' A.G.L.	K.B. 2417
Drilling Measured From	KELLY BUSHING	D.F. 2415
		G.L. 2406

Date	4/24/12
Run Number	ONE
Depth Driller	4956
Depth Logger	4958
Bottom Logged Interval	4934
Top Log Interval	3400
Casing Driller	8 5/8"@312'
Casing Logger	312
Bit Size	7 7/8"
Type Fluid in Hole	CHEMICAL MUD
Density / Viscosity	9.2/52
pH / Fluid Loss	9.0/8.8
Source of Sample	FLOWLINE
Rm @ Meas. Temp	.550@60F
Rmt @ Meas. Temp	.413@60F
Rmc @ Meas. Temp	.660@60F
Source of Rmf / Rmc	MEASUREMENT
Rm @ BHT	.264@125F
Time Circulation Stopped	3 HOURS
Time Logger on Bottom	12:15 A.M.
Maximum Recorded Temperature	125F
Equipment Number	4010
Location	HAYS, KANSAS
Recorded By	JEFF LUEBBERS
Witnessed By	MAX LOVELY
	GARY ROWE

<<< Fold Here >>>

All interpretations are opinions based on inferences from electrical or other measurements and we cannot and do not guarantee the accuracy or correctness of any interpretation, and we shall not, except in the case of gross or willful negligence on our part, be liable or responsible for any loss, costs, damages, or expenses incurred or sustained by anyone resulting from any interpretation made by any of our officers, agents or employees. These interpretations are also subject to our general terms and conditions set out in our current Price Schedule.

Comments

THANK YOU FOR USING SUPERIOR WELL SERVICE HAYS, KANSAS (785) 628-6395
 DIRECTIONS
 SPEARVILLE, KS. 1E. ON HWY 50 TO "RD. 127", 2 1/2S. TO STOP SIGN, 1/2 E. TO "RD. 127", 1/2S., E. INT

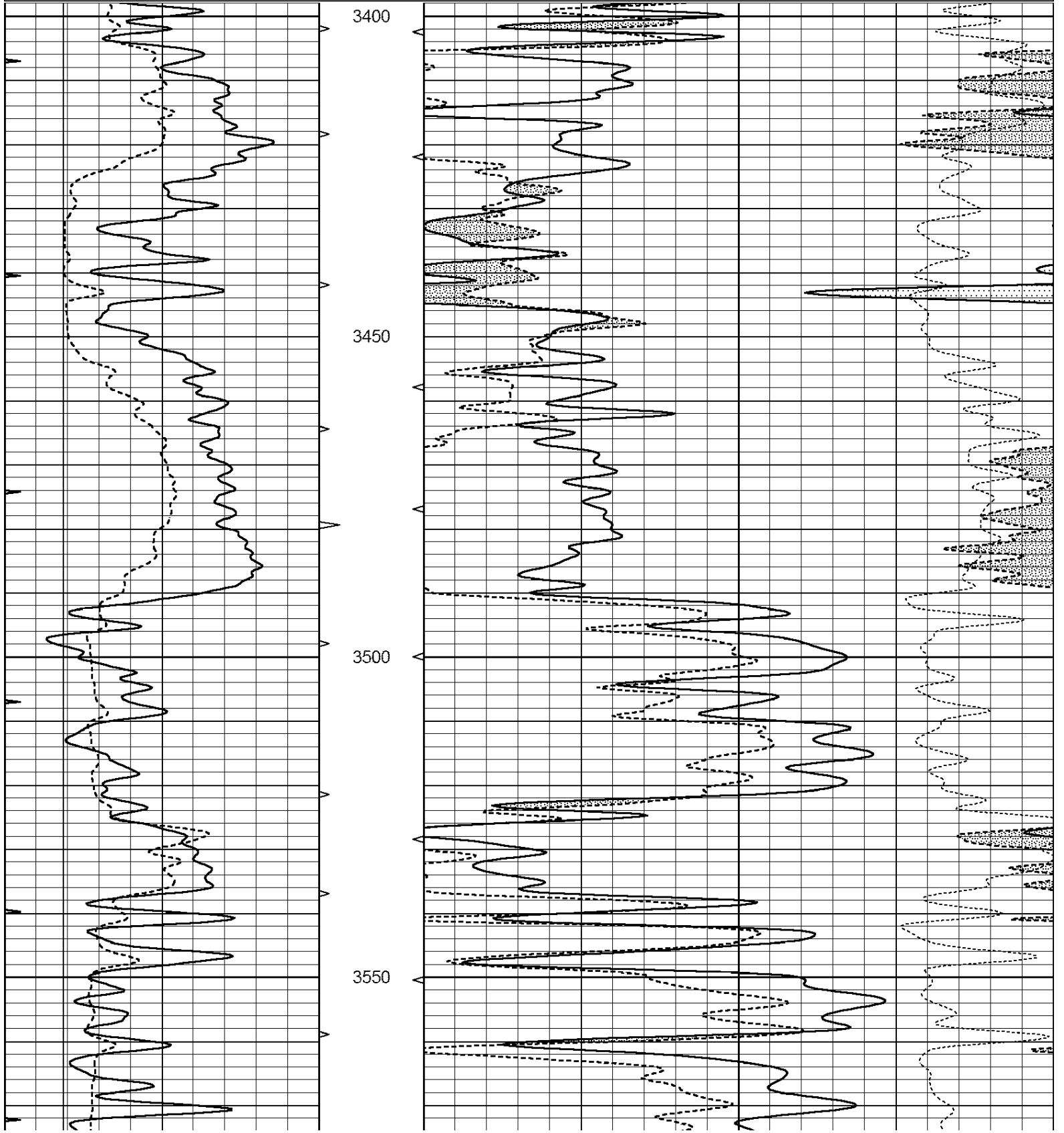


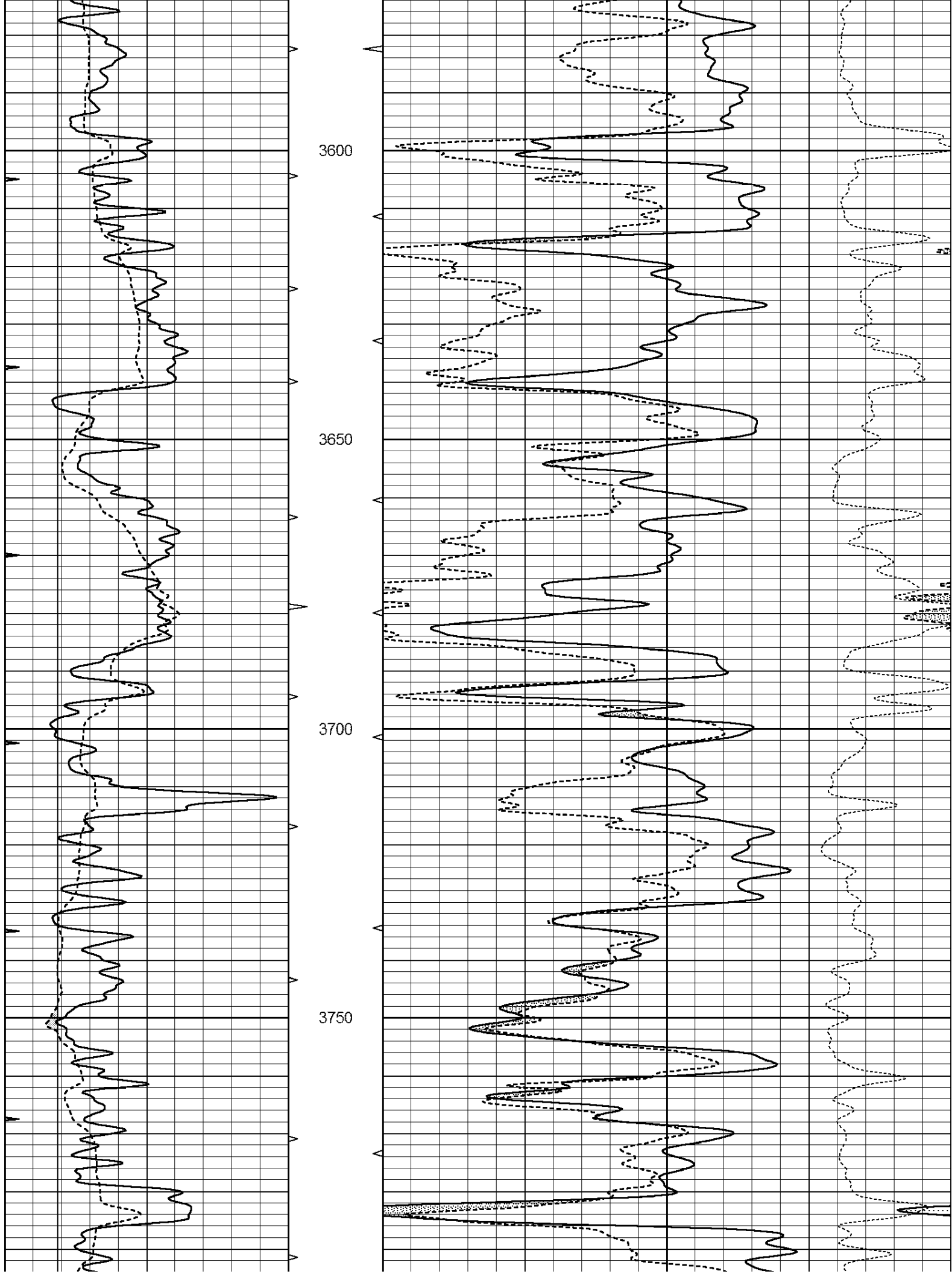
SUPERIOR
Hays,
Kansas

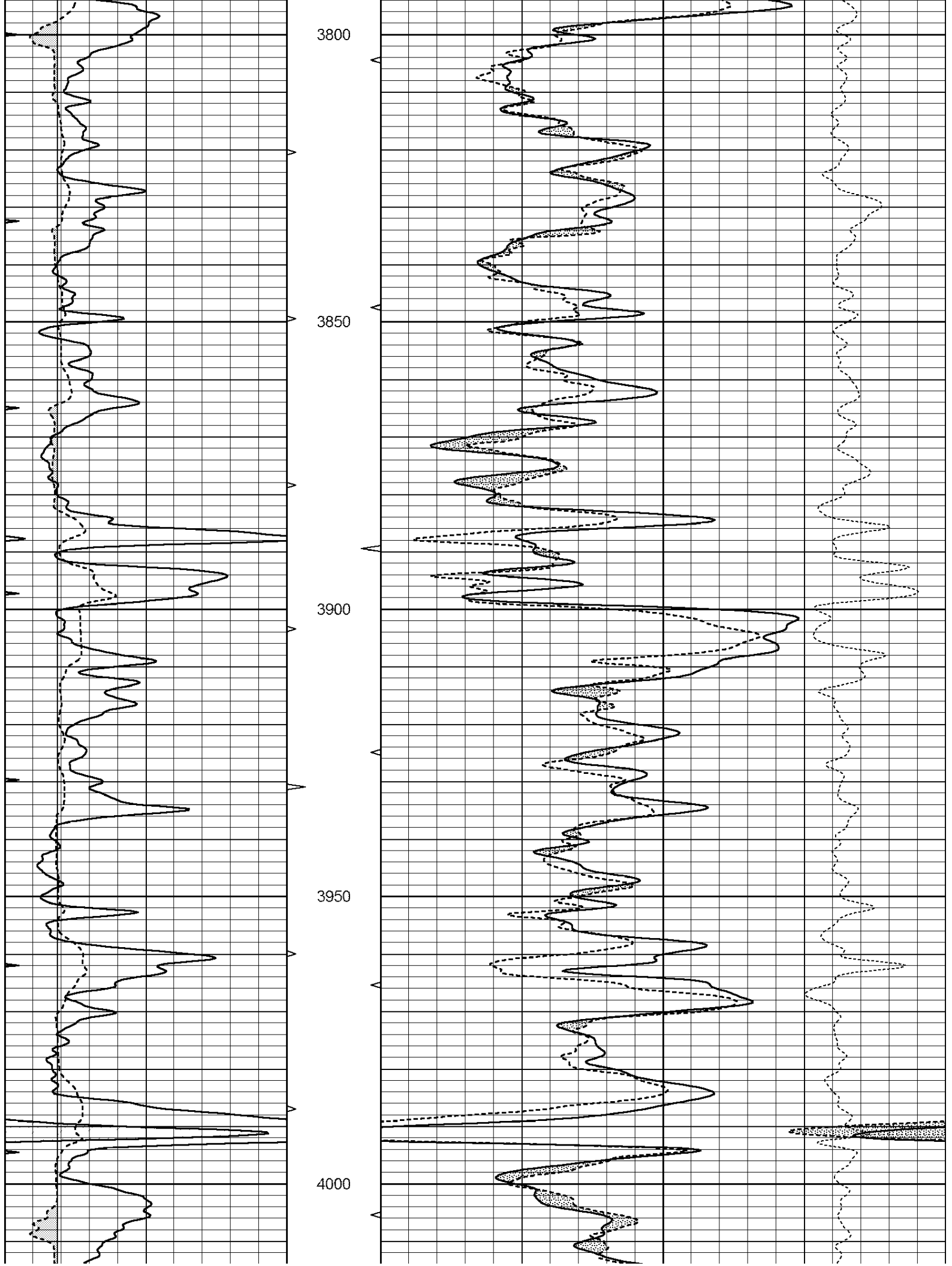
MAIN SECTION

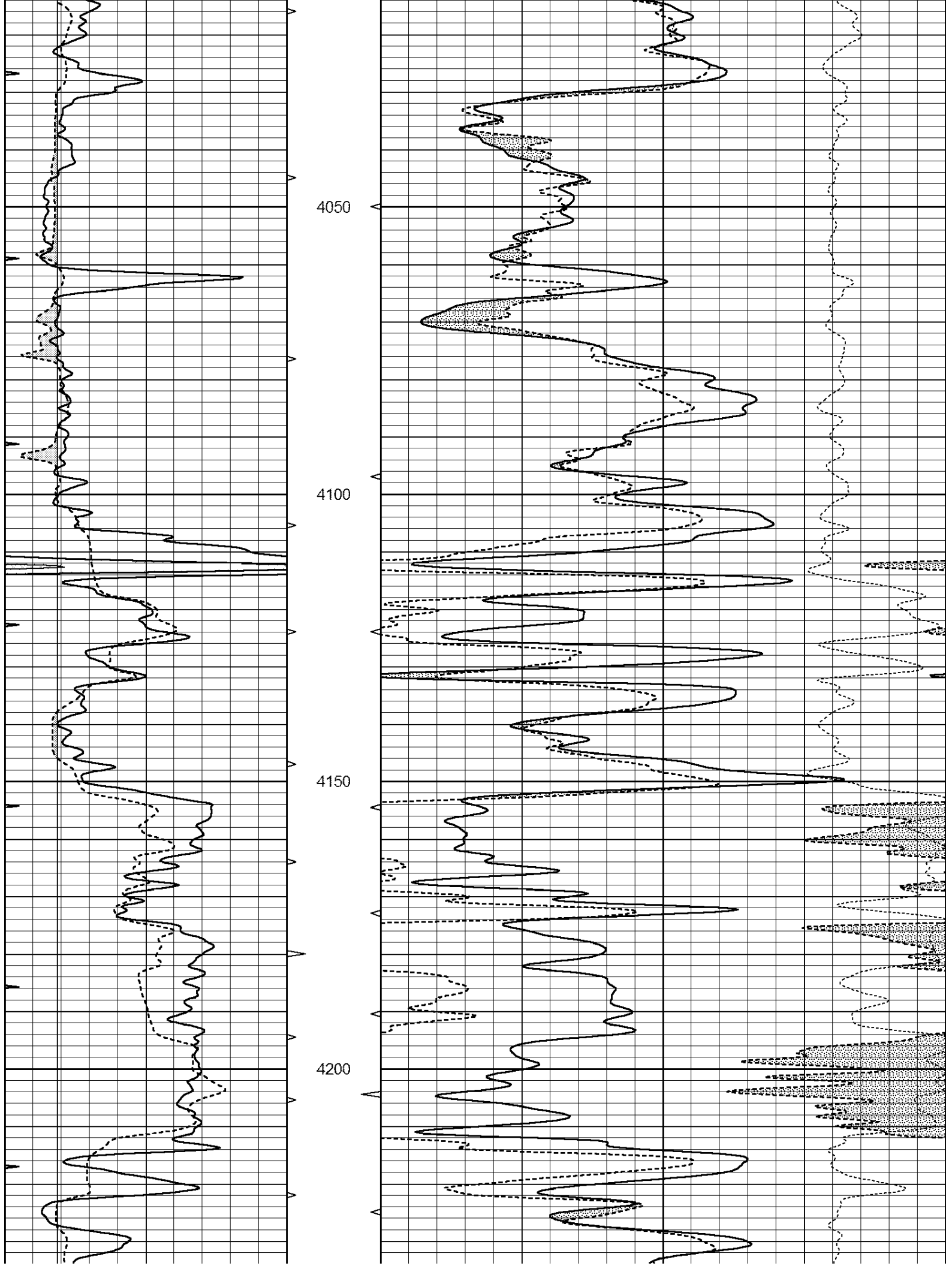
Database File: 408753ddn.db
 Dataset Pathname: pass3.7
 Presentation Format: den_neu
 Dataset Creation: Tue Apr 24 01:53:10 2012 by Calc Open-Cased 110302
 Charted by: Depth in Feet scaled 1:240

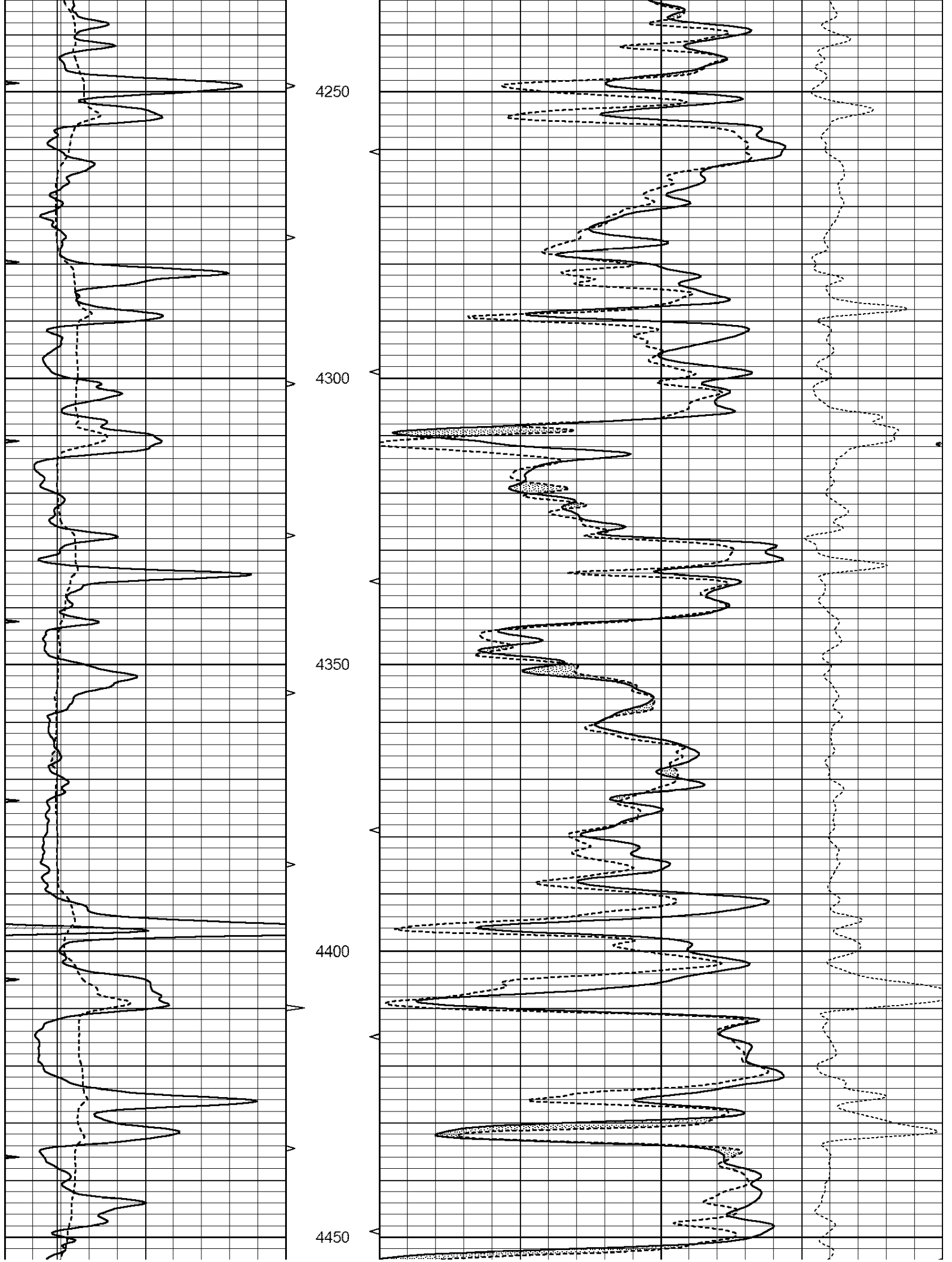
0	GAMMA RAY (GAPI)	150	ABHV	30	COMPENSATED DENSITY (pu)	-10
6	CALIPER (in)	16	10 (ft3)	0 30	COMPENSATED NEUTRON (pu)	-10
0	MINMK	20	TBHV		-0.25 CORRECTION (g/cc)	0.25
			0 (ft3)	10		

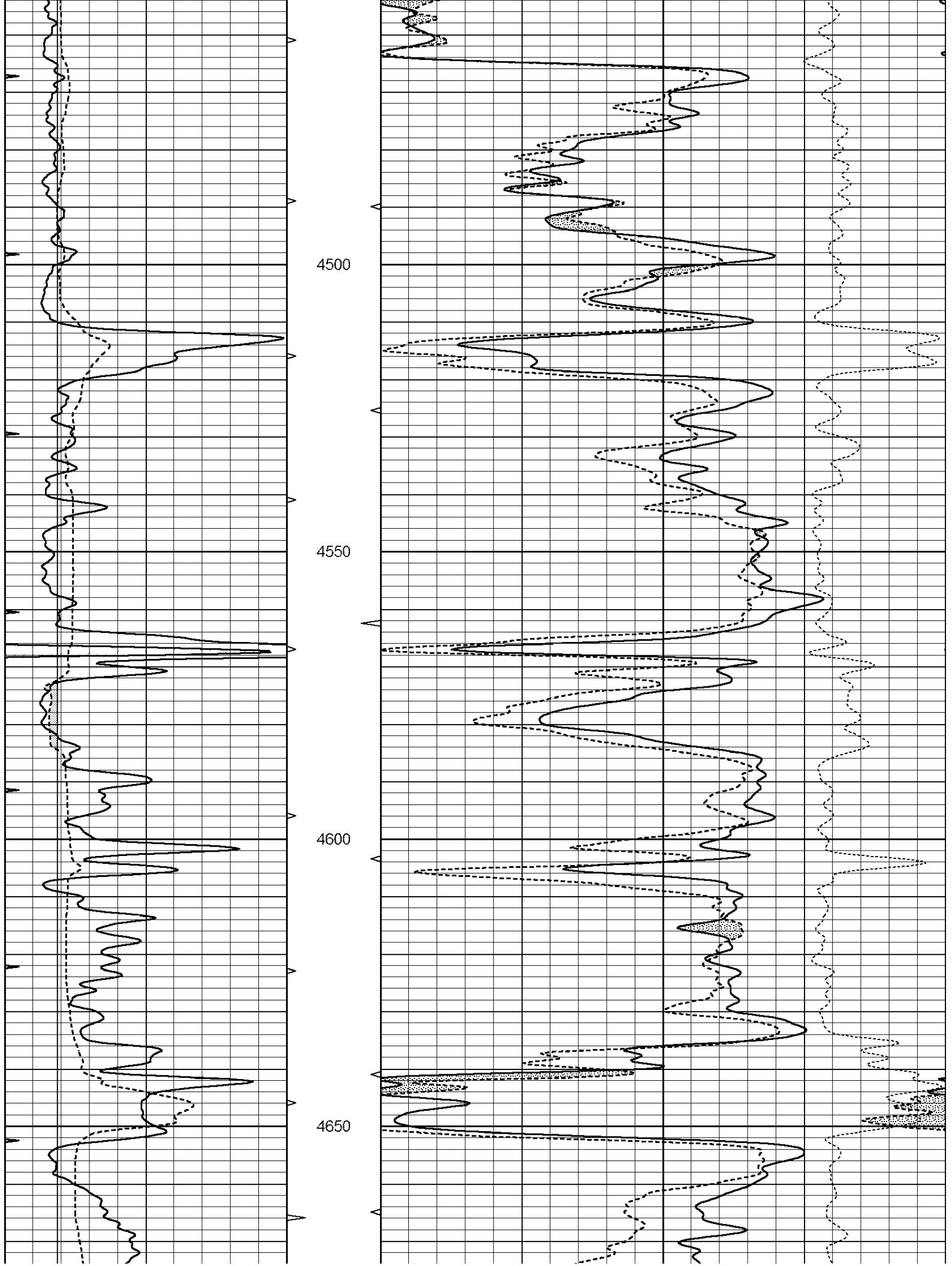


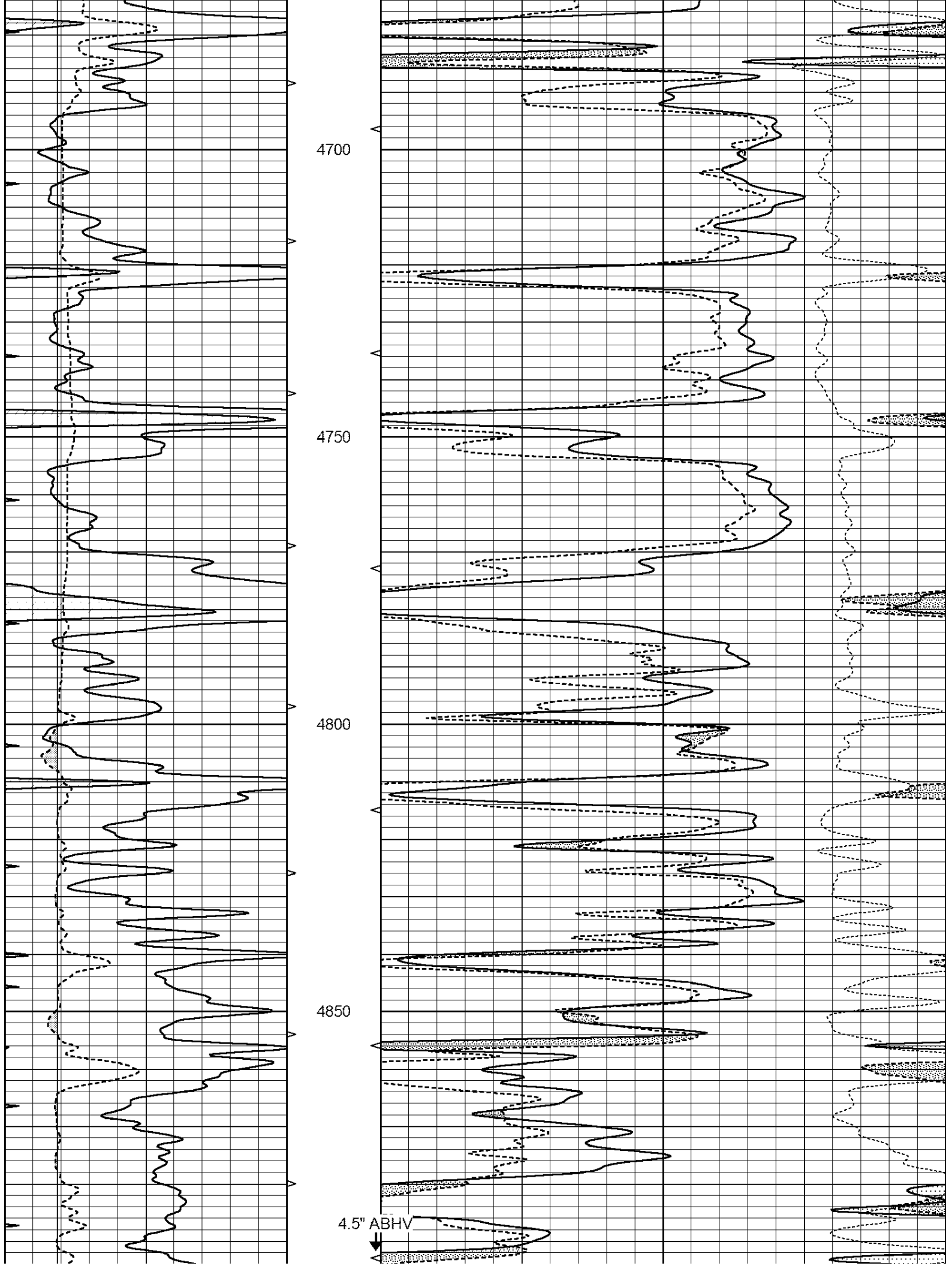


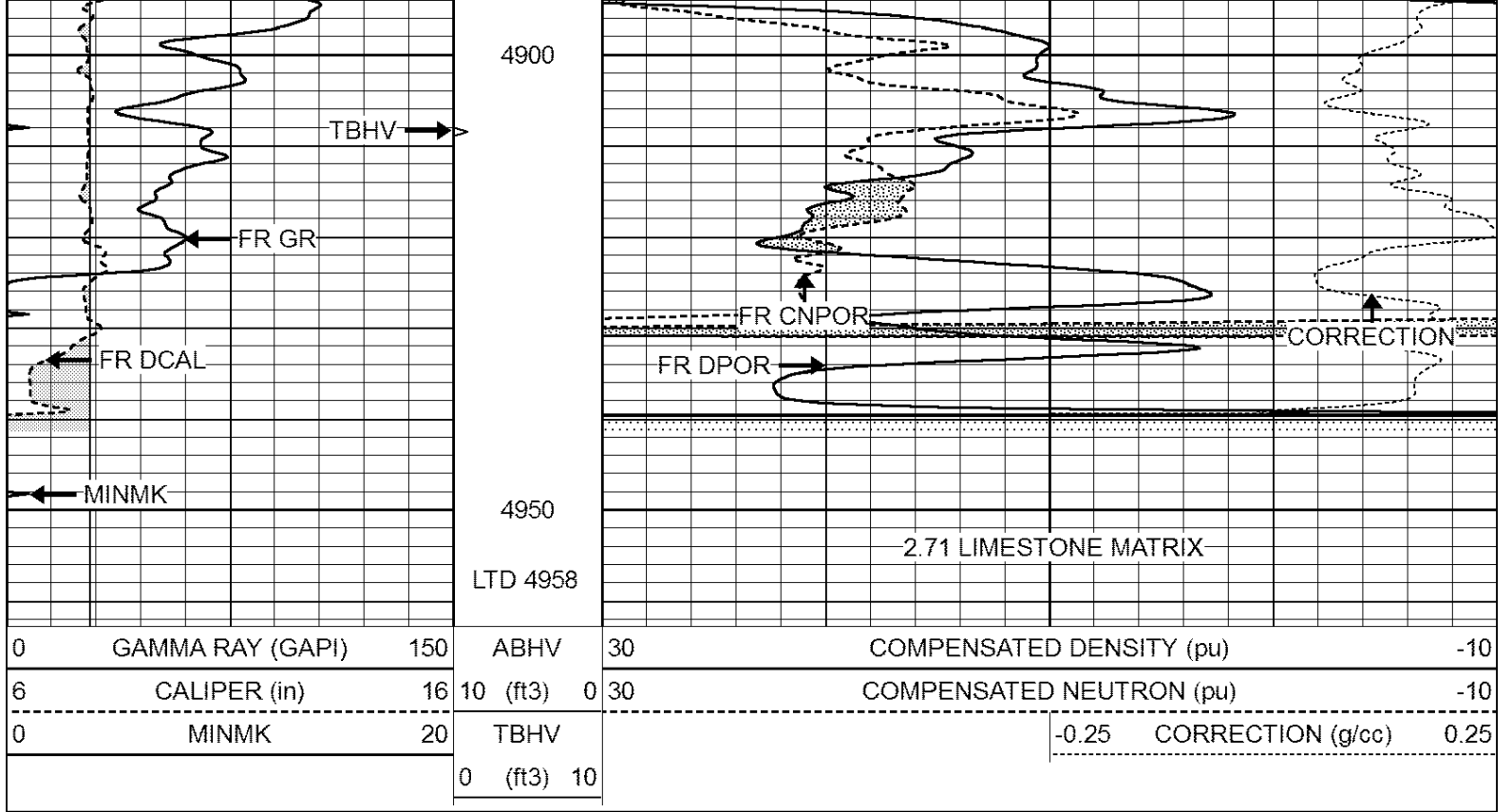










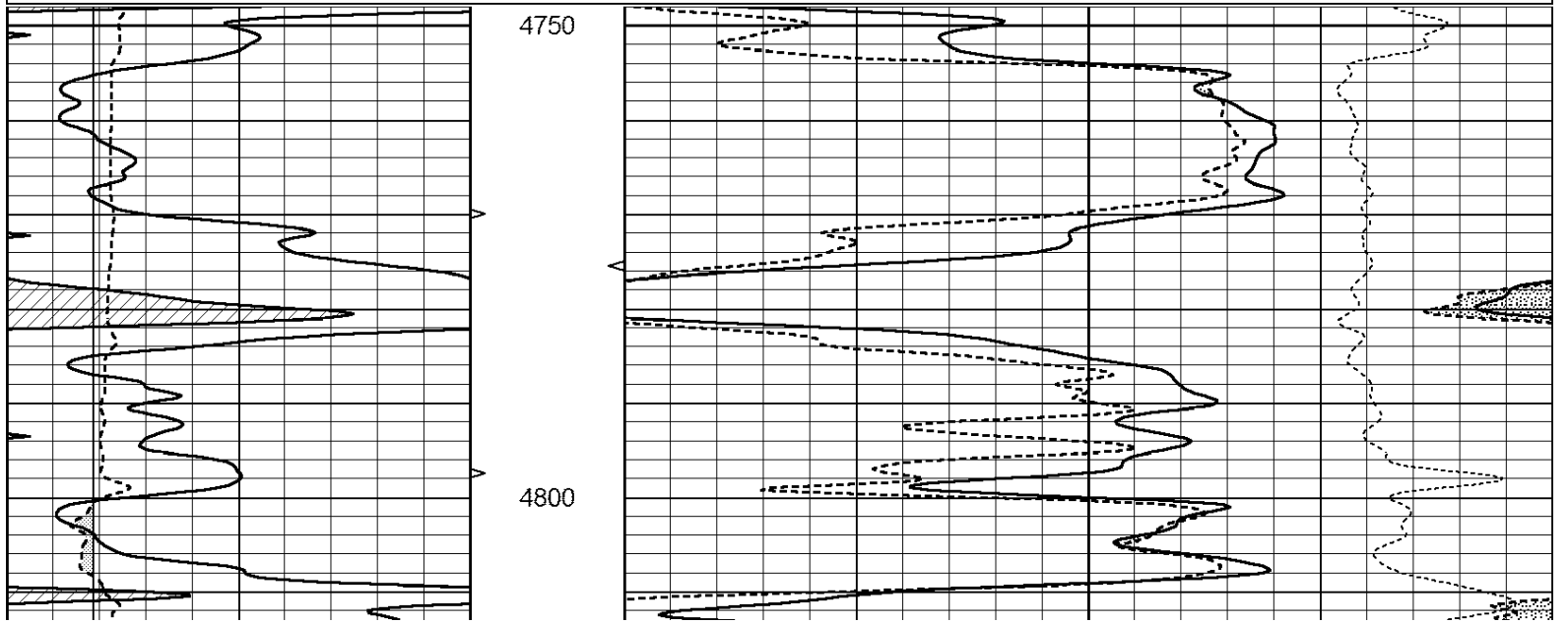


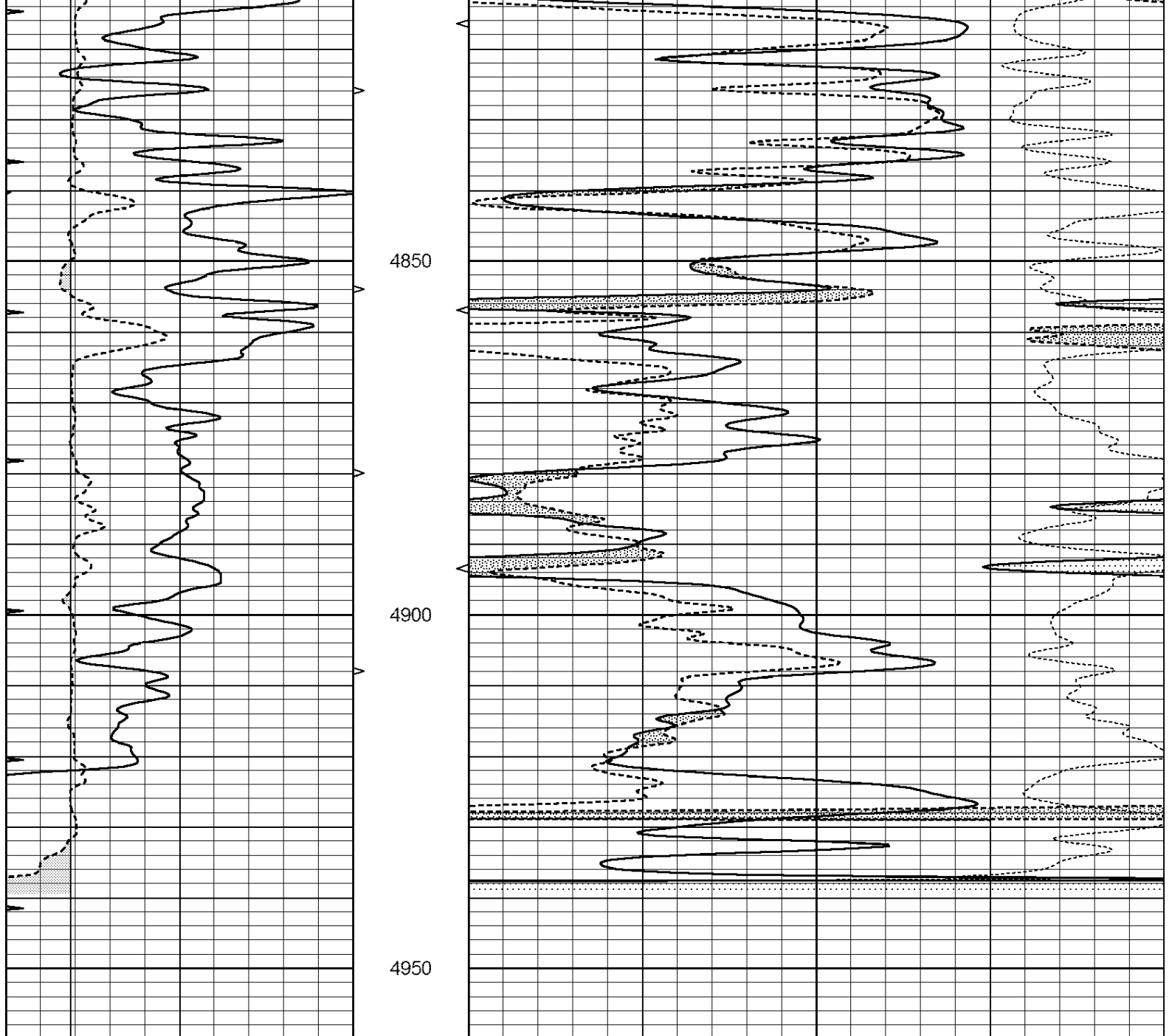
SUPERIOR
Hays,
Kansas

REPEAT SECTION

Database File: 408753ddn.db
 Dataset Pathname: pass2.11
 Presentation Format: den_neu
 Dataset Creation: Tue Apr 24 01:27:09 2012 by Calc Open-Cased 110302
 Charted by: Depth in Feet scaled 1:240

0	GAMMA RAY (GAPI)	150	ABHV	30	COMPENSATED DENSITY (pu)	-10
6	CALIPER (in)	16	10 (ft3)	0 30	COMPENSATED NEUTRON (pu)	-10
0	MINMK	20	TBHV		-0.25	CORRECTION (g/cc) 0.25
			0 (ft3)	10		





0	GAMMA RAY (GAPI)	150	ABHV	30	COMPENSATED DENSITY (pu)	-10	
6	CALIPER (in)	16	10 (ft3)	0 30	COMPENSATED NEUTRON (pu)	-10	
0	MINMK	20	TBHV		-0.25	CORRECTION (g/cc)	0.25
			0 (ft3)	10			

Calibration Report

Database File: 408753ddn.db
 Dataset Pathname: pass3.7
 Dataset Creation: Tue Apr 24 01:53:10 2012 by Calc Open-Cased 110302

Dual Induction Calibration Report

Serial-Model: DIL4-GEAR
 Performed: Sun Apr 15 16:36:15 2012

Readings

References

Results

Loop: Air Loop Air Loop m b

Deep	0.008	0.666	V	0.000	400.000	mmho/m	570.000	2.000
Medium	-0.003	0.769	V	0.000	462.500	mmho/m	560.000	1.000
Internal:	Zero	Cal		Zero	Cal		m	b
Deep	0.013	0.651	V	0.000	400.000	mmho/m	627.541	-8.365
Medium	0.020	0.754	V	0.000	462.500	mmho/m	630.311	-12.549

Litho Density Calibration Report
Serial: 003N Model: PRB
Performed Tue Sep 08 14:14:44 2009

Litho Density Calibration

	Background	Magnesium	Aluminum	Sandstone	
Window 1	2042.6	12312.8	4225.8	13758.4	cps
Window 2	1855.8	10134.7	3624.2	11113.1	cps
Window 3	1639.4	6760.2	2716.3	7260.3	cps
Window 4	466.4	469.2	466.1	476.5	cps
Long Space	0.0	8278.9	1768.4	9257.4	cps
Short Space	2.2	2377.3	1544.1	2574.2	cps
Rho		1.7100	2.5900	1.3800	g/cc
Pe			2.5700	1.5500	
Rib Angle	: 44.4	Rib Slope	: 0.979	Density/Spine Ratio	: 0.549
Spine Angle	: 74.4	Spine Slope	: 3.577	Spine Intercept	: -18.8

Caliper

	Readings	Reference	
Low Ref	2.0	7.2	
High Ref	4.0	15.0	
Gain: 3.8			Offset: -0.3

Compensated Neutron Calibration Report

Serial Number: 070808
Tool Model: Probe

PRE-SURVEY VERIFICATION

Detector	Readings	Measured	Target
Short Space	cps		
Long Space	cps	pu	pu

POST-SURVEY VERIFICATION

Detector	Readings	Measured	Target
Short Space	cps		
Long Space	cps	pu	pu

Gamma Ray Calibration Report

Serial Number: 070559
Tool Model: OPEN_GR
Performed: Mon Apr 16 22:08:41 2012

Calibrator Value: 1.0 GAPI

Background Reading: 0.0 cps
Calibrator Reading: 1.0 cps

Sensitivity: 0.3000 GAPI/cps