



SUPERIOR
Hays,
Kansas

**DUAL INDUCTION
LOG**

Company RITCHIE EXPLORATION, INC.
Well #1 LAMPE - HESKAMP
Field WILDCAT
County FORD
State KANSAS

Company RITCHIE EXPLORATION, INC.
Well #1 LAMPE - HESKAMP
Field WILDCAT
County FORD State KANSAS

Location: API # : 15-057-20794-0000
2780' FSL & 33F' FWL
SEC 3 TWP 26S RGE 22W
Permanent Datum GROUND LEVEL Elevation 2406
Log Measured From KELLY BUSHING 11' A.G.L.
Drilling Measured From KELLY BUSHING
Other Services CDL/CNL
Elevation K.B. 2417
D.F. 2415
G.L. 2406

Date	4/24/12
Run Number	ONE
Depth Driller	4956
Depth Logger	4958
Bottom Logged Interval	4956
Top Log Interval	00
Casing Driller	8 5/8"@312'
Casing Logger	312
Bit Size	7 7/8"
Type Fluid in Hole	CHEMICAL MUD
Density / Viscosity	9.2/52
pH / Fluid Loss	9.0/8.8
Source of Sample	FLOWLINE
Rm @ Meas. Temp	.550@60F
Rmt @ Meas. Temp	.413@60F
Rmc @ Meas. Temp	.660@60F
Source of Rmf / Rmc	MEASUREMENT
Rm @ BHT	.264@125F
Time Circulation Stopped	3 HOURS
Time Logger on Bottom	12:15 A.M.
Maximum Recorded Temperature	125F
Equipment Number	4010
Location	HAYS, KANSAS
Recorded By	JEFF LUEBBERS
Witnessed By	MAX LOVELLY
	GARY ROWE

<<< Fold Here >>>

All interpretations are opinions based on inferences from electrical or other measurements and we cannot and do not guarantee the accuracy or correctness of any interpretation, and we shall not, except in the case of gross or willful negligence on our part, be liable or responsible for any loss, costs, damages, or expenses incurred or sustained by anyone resulting from any interpretation made by any of our officers, agents or employees. These interpretations are also subject to our general terms and conditions set out in our current Price Schedule.

Comments

THANK YOU FOR USING SUPERIOR WELL SERVICE HAYS, KANSAS (785) 628-6395
DIRECTIONS
SPEARVILLE, KS. 1E. ON HWY 50 TO "RD. 127", 2 1/2S. TO STOP SIGN, 1/2 E. TO "RD. 127", 1/2S., E. INT



SUPERIOR
Hays,
Kansas

MAIN SECTION

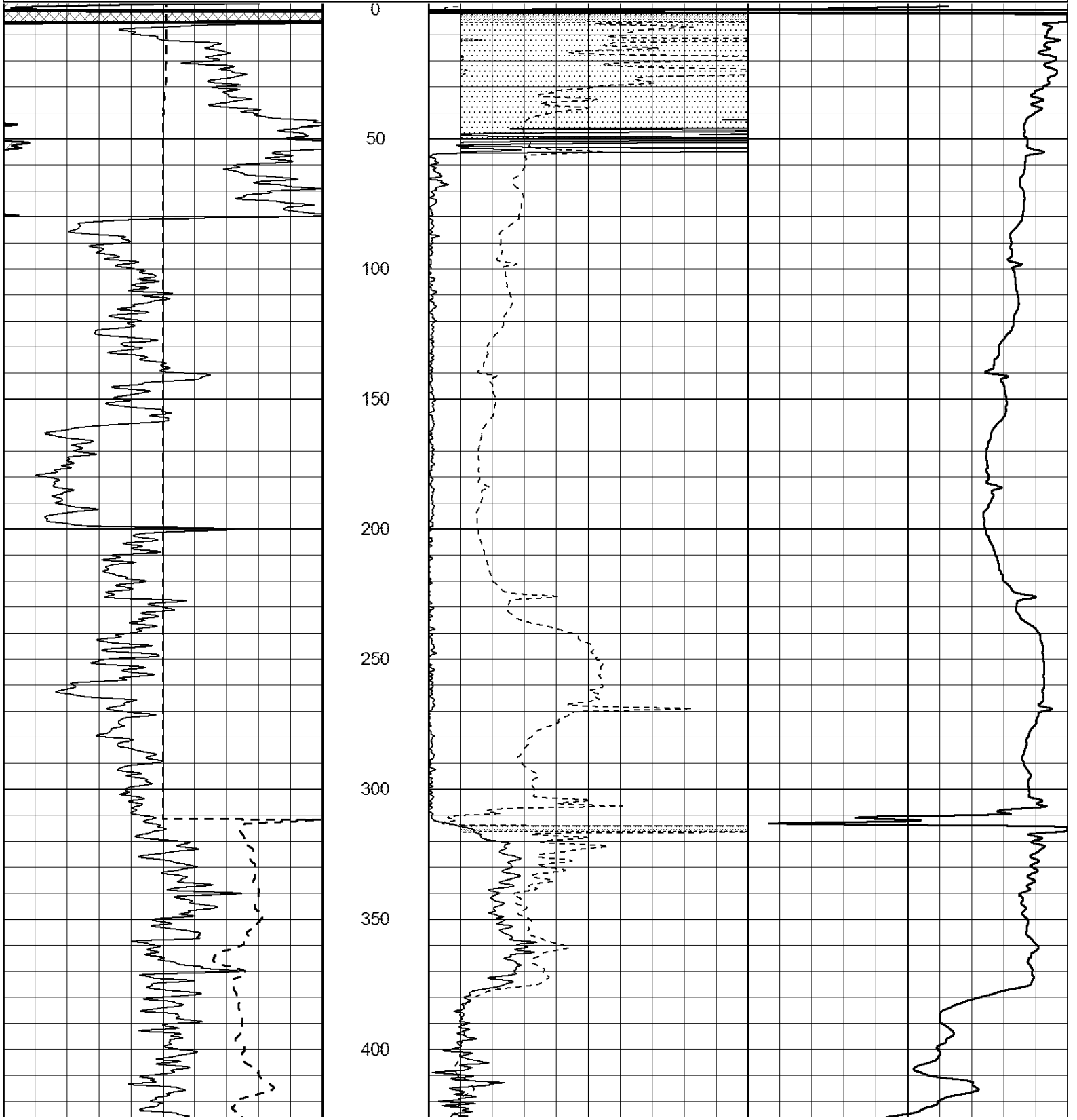
Database File: 408753ddn.db
 Dataset Pathname: pass3.8
 Presentation Format: dil2
 Dataset Creation: Tue Apr 24 03:23:58 2012
 Charted by: Depth in Feet scaled 1:600

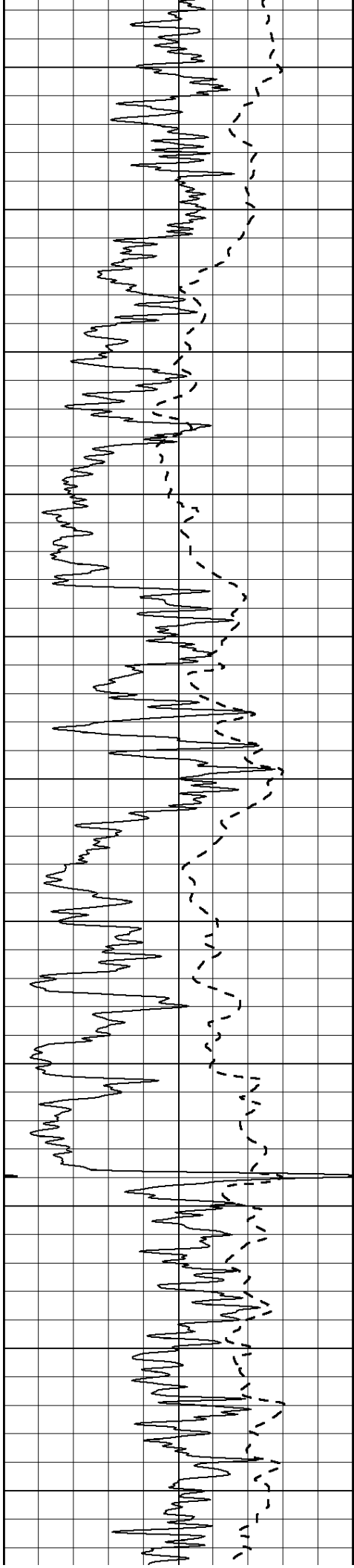
0	Gamma Ray (GAPI)	150
-100	SP (mV)	100

0	RLL3 (Ohm-m)	50
0	RILD (Ohm-m)	50

1000	CILD (mmho/m)	0
------	---------------	---

50	RILD X10 (Ohm-m)	500
50	RLL3 X10 (Ohm-m)	500





450

500

550

600

650

700

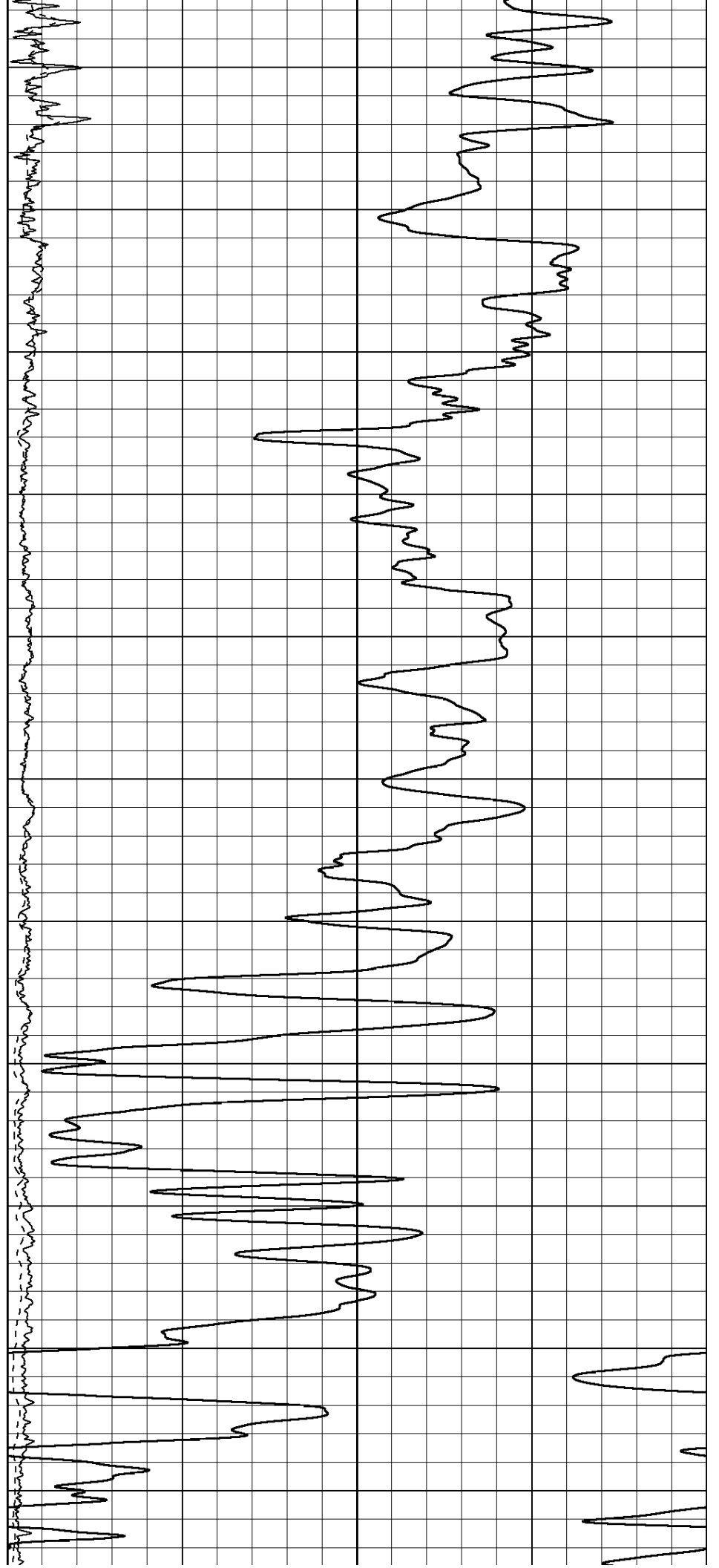
750

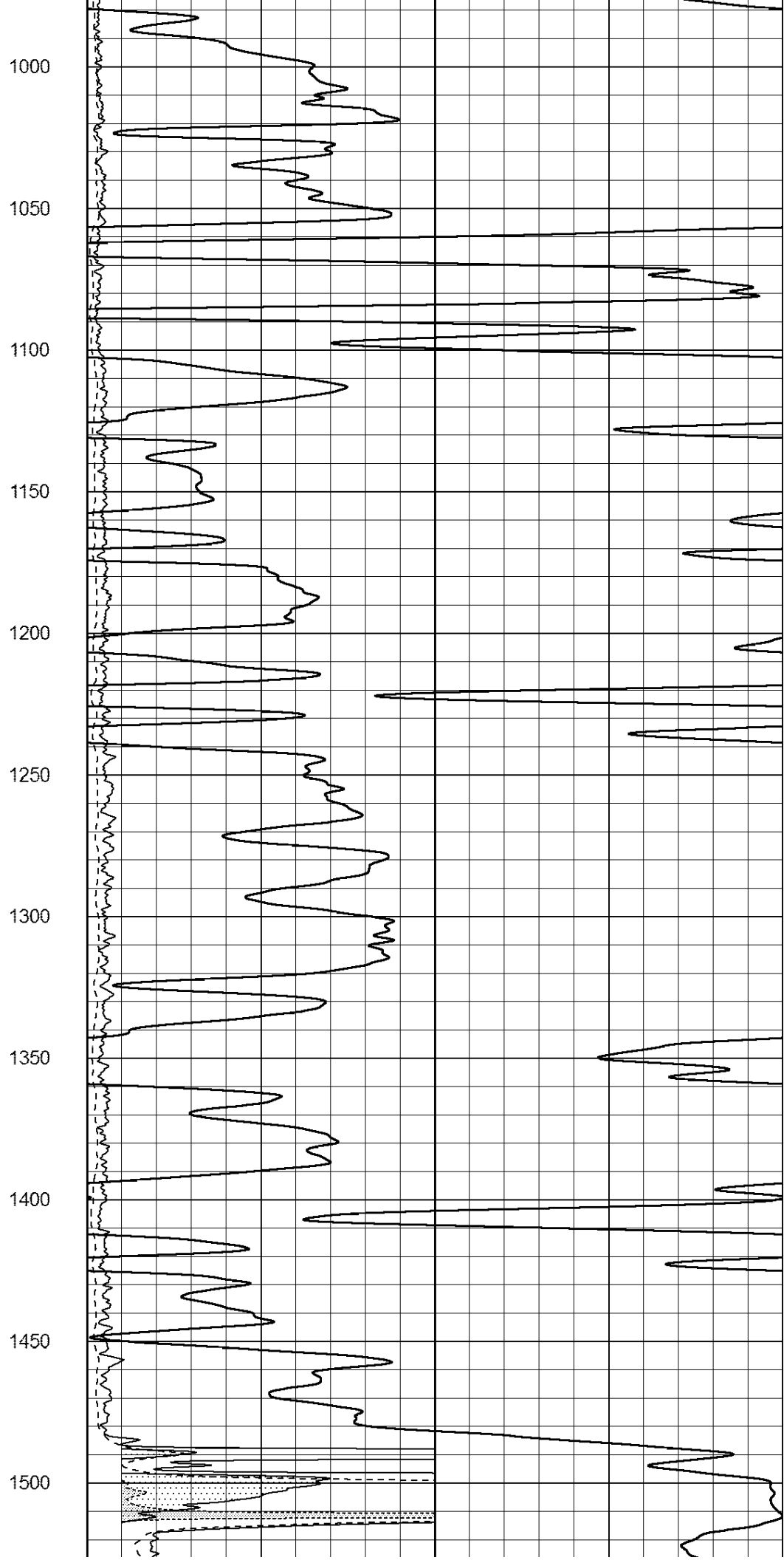
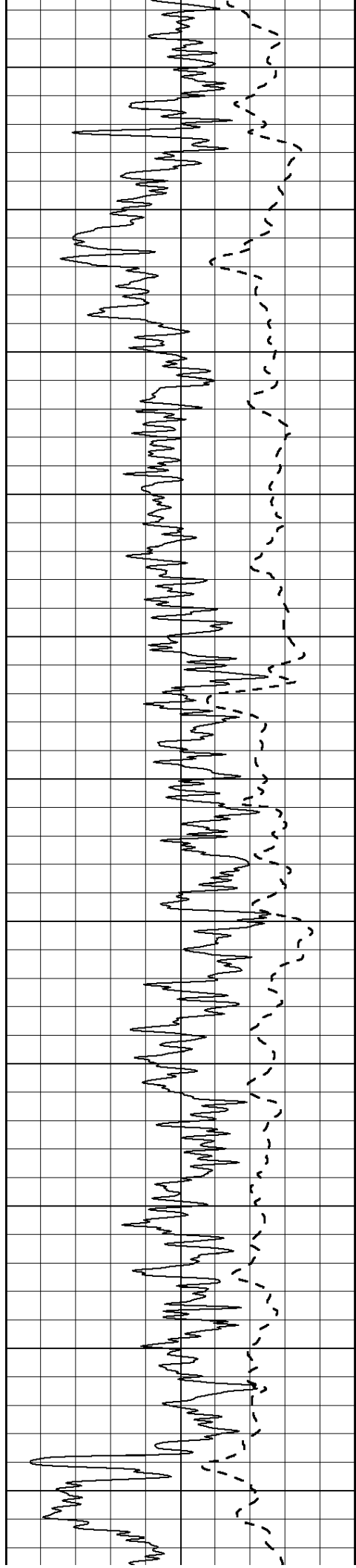
800

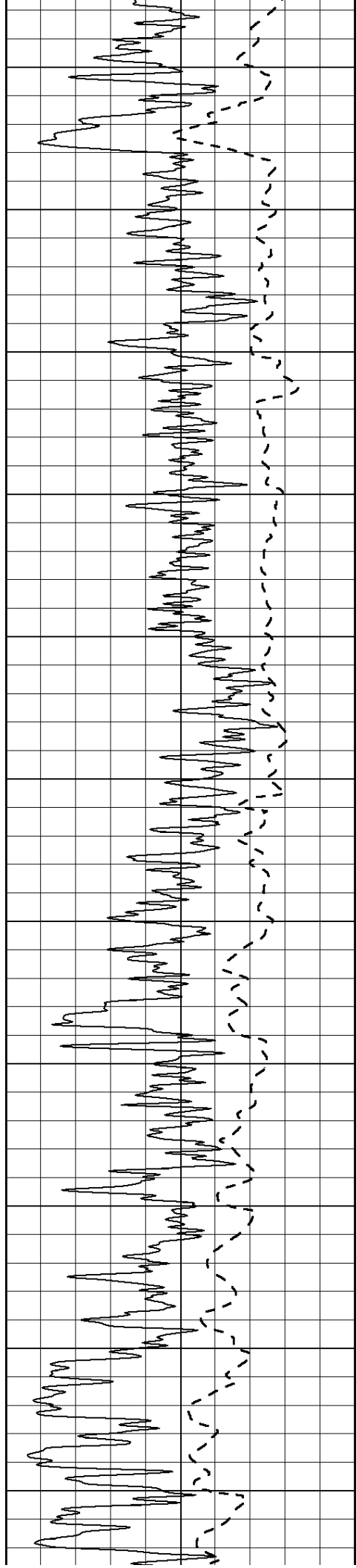
850

900

950







1550

1600

1650

1700

1750

1800

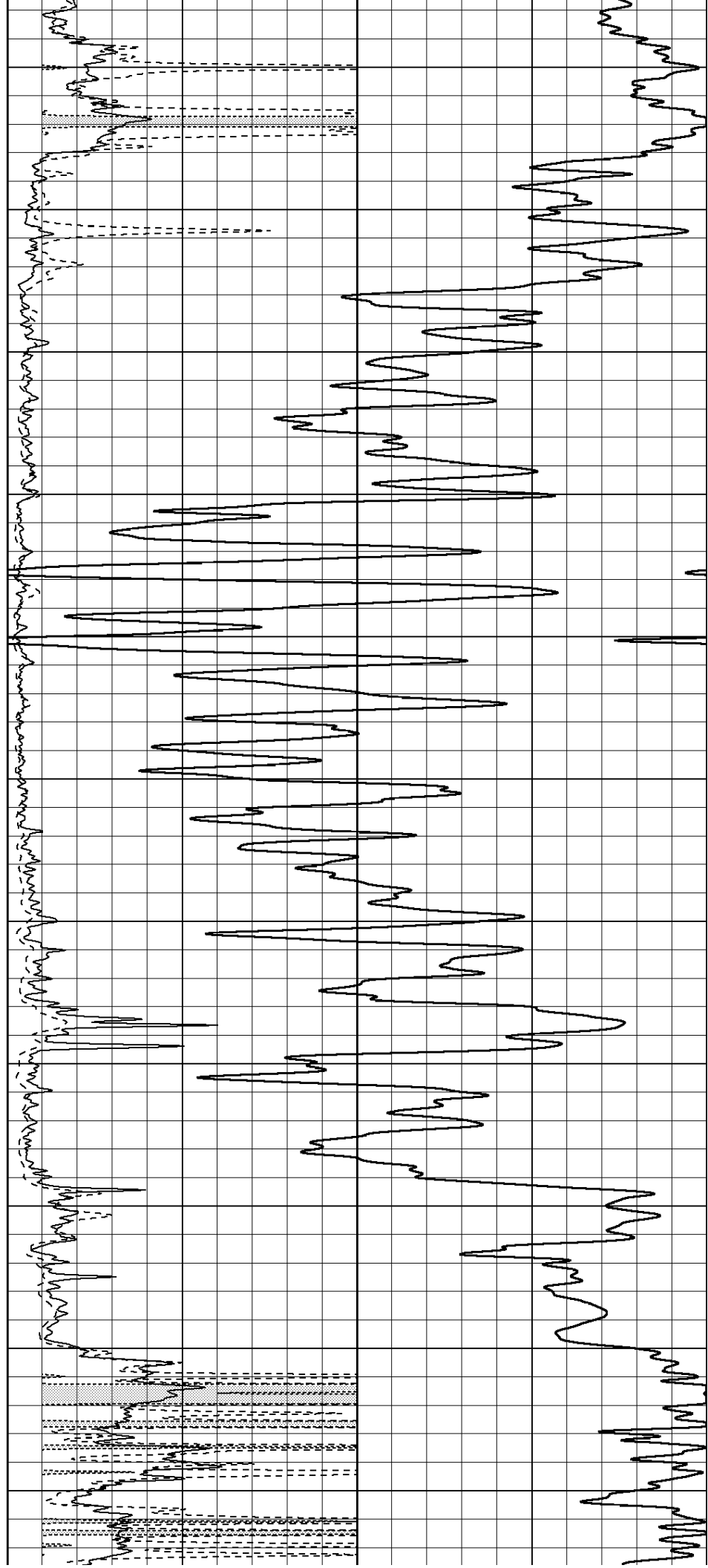
1850

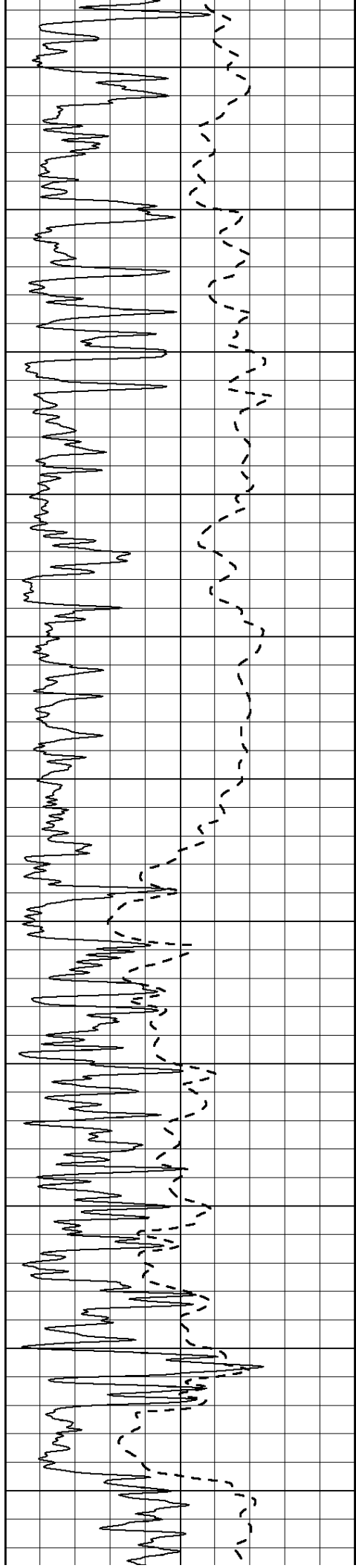
1900

1950

2000

2050





2100

2150

2200

2250

2300

2350

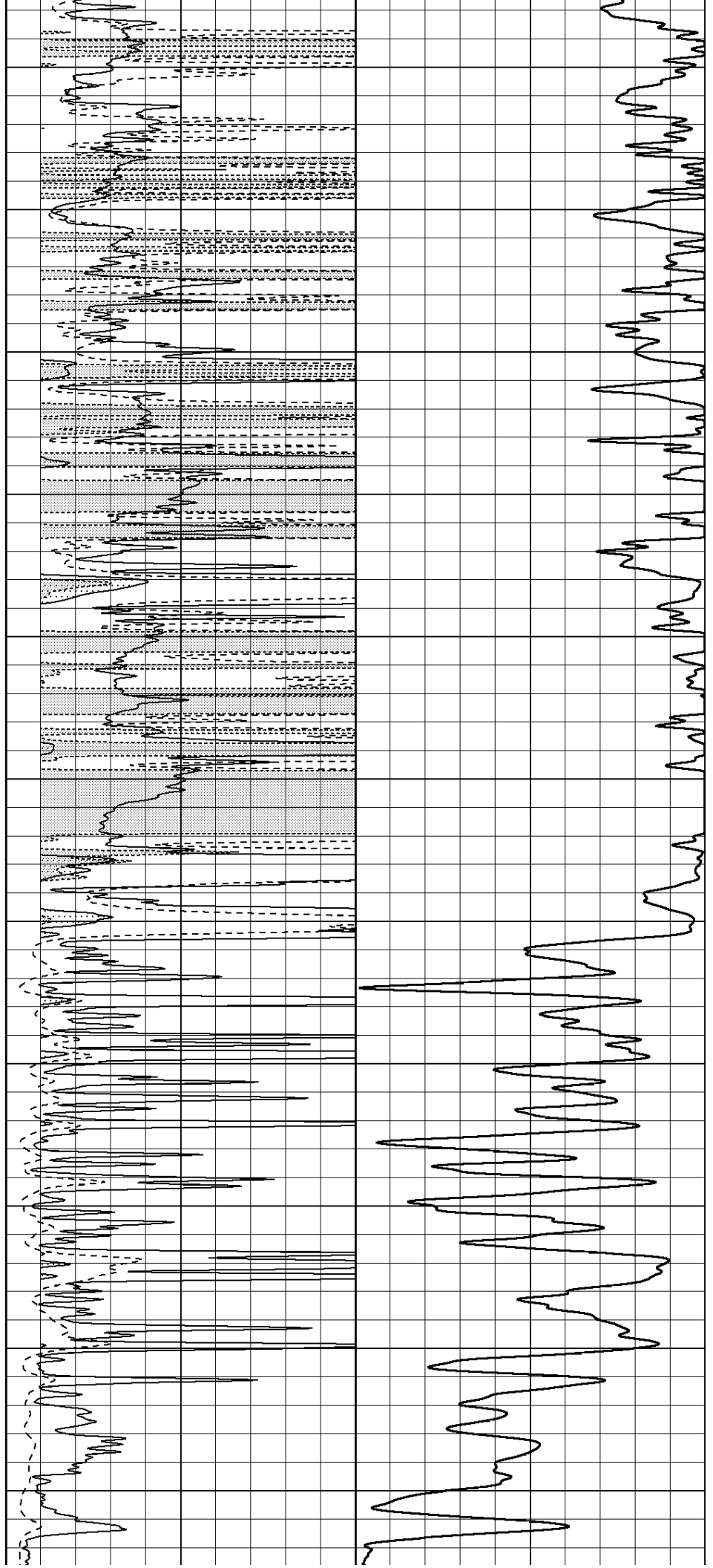
2400

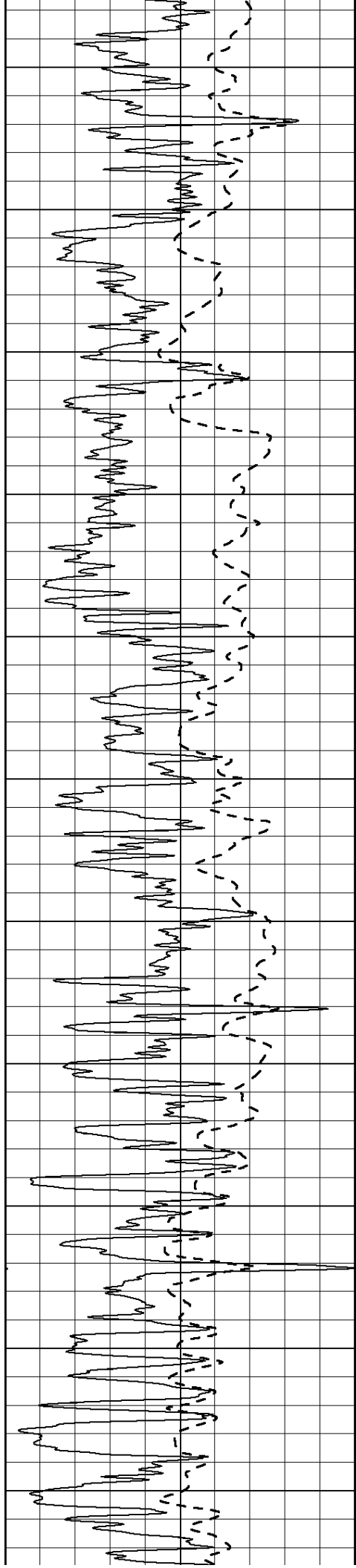
2450

2500

2550

2600





2650

2700

2750

2800

2850

2900

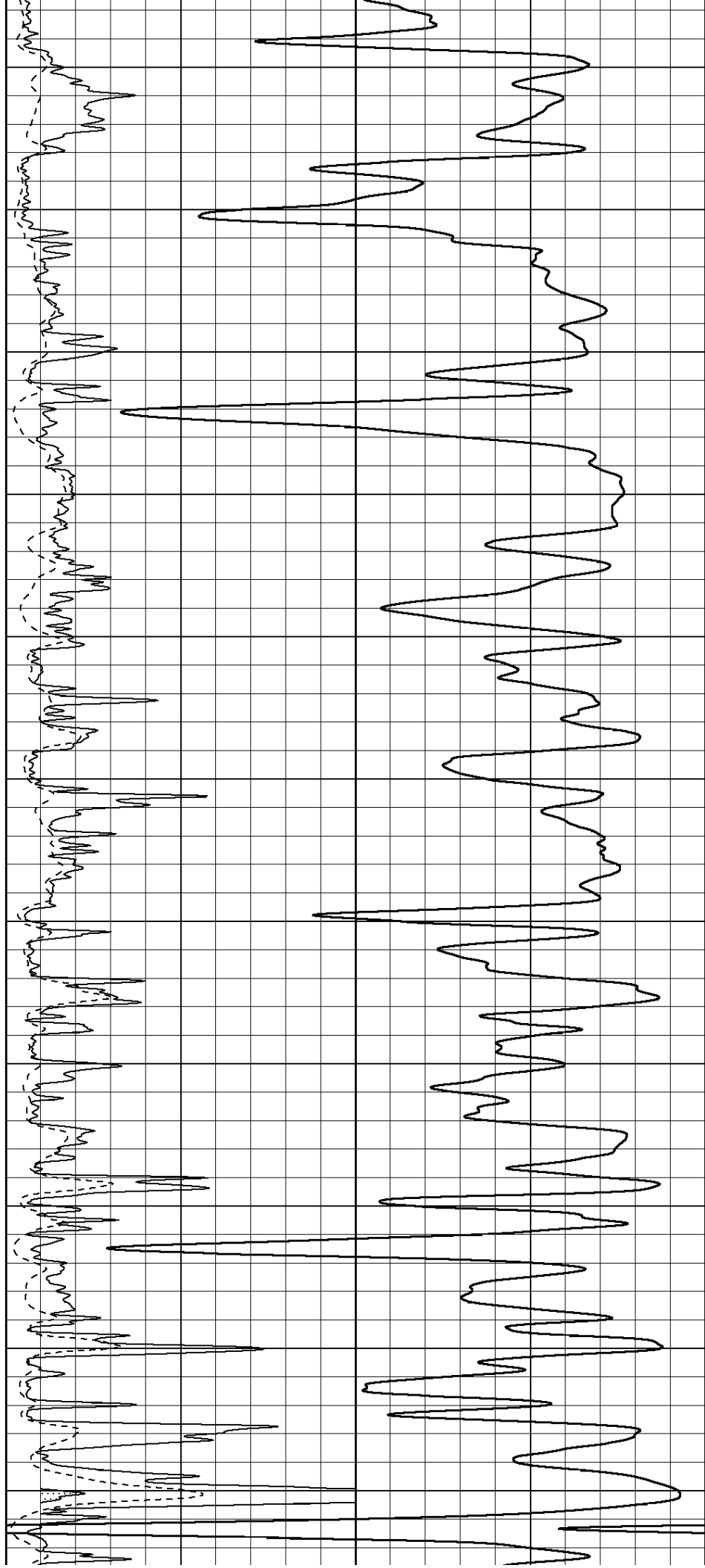
2950

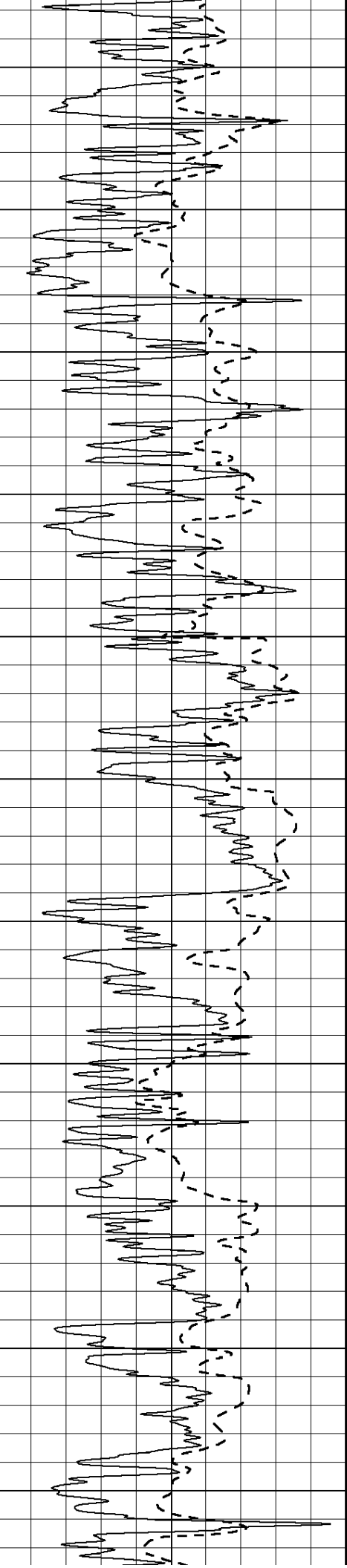
3000

3050

3100

3150





3200

3250

3300

3350

3400

3450

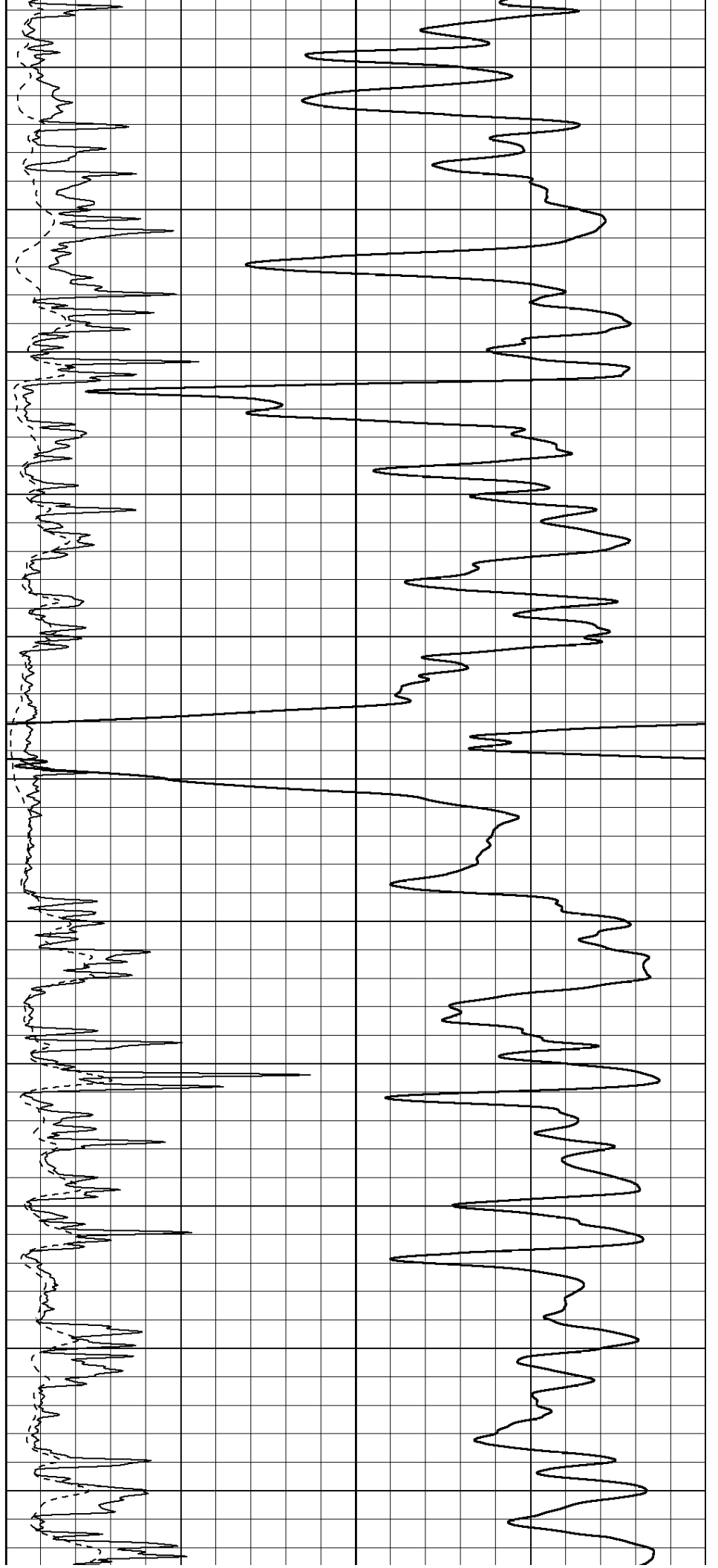
3500

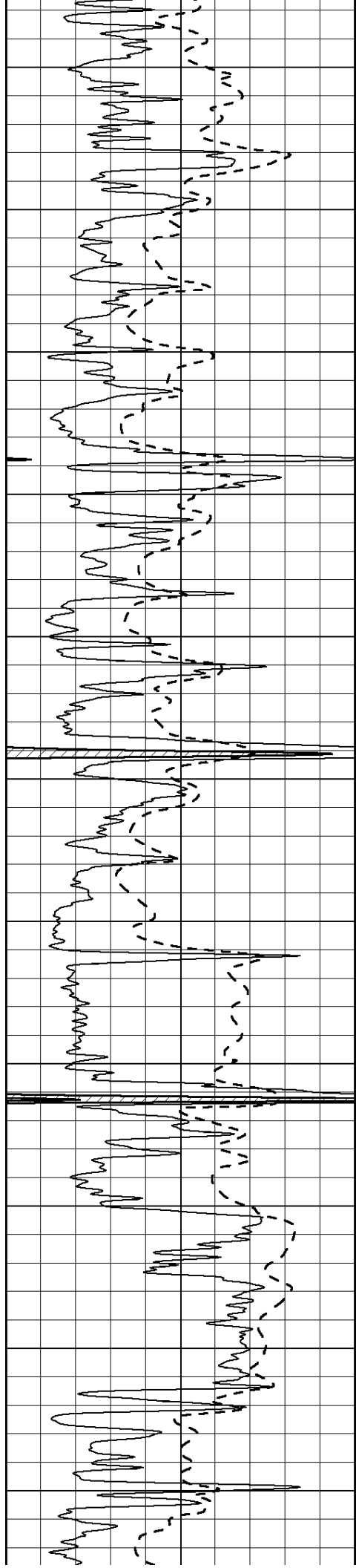
3550

3600

3650

3700





3750

3800

3850

3900

3950

4000

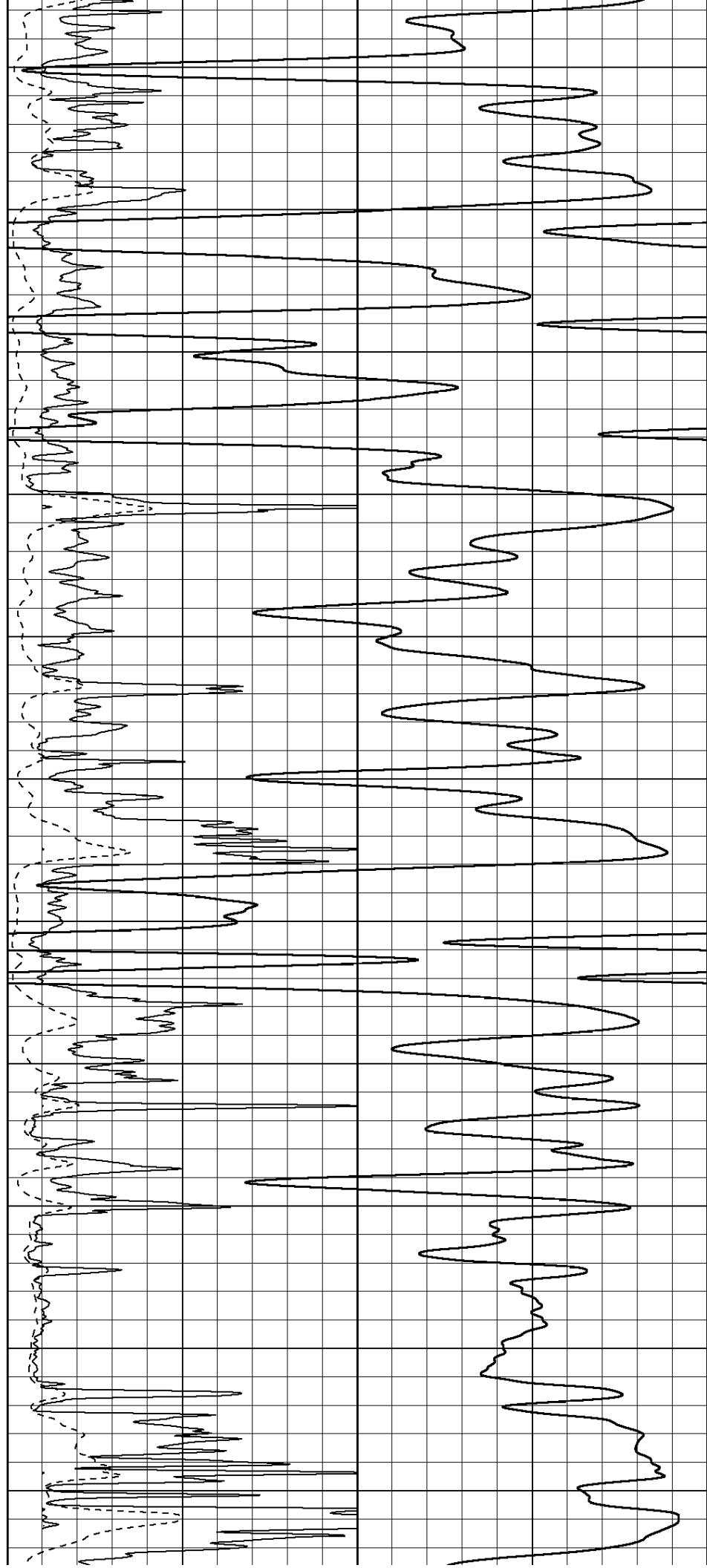
4050

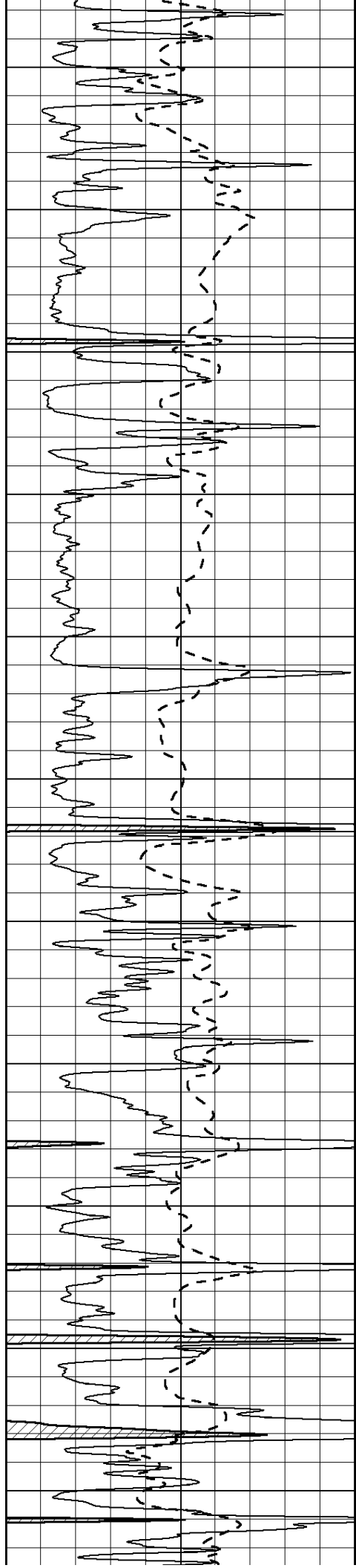
4100

4150

4200

4250





4300

4350

4400

4450

4500

4550

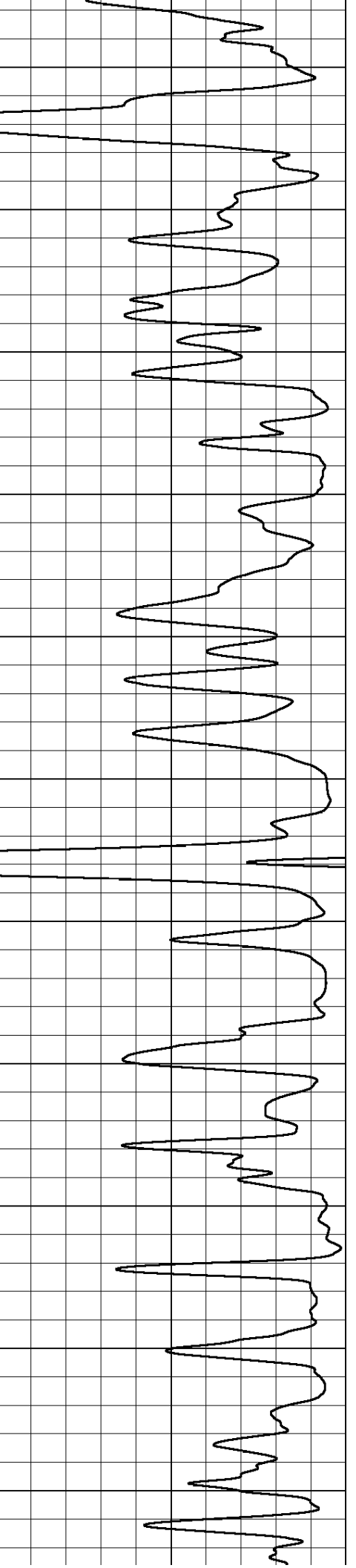
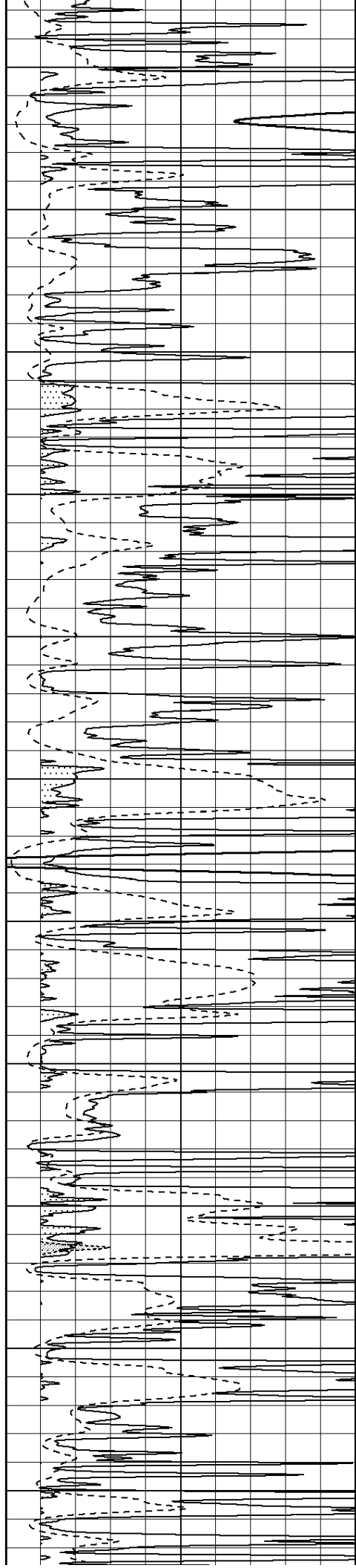
4600

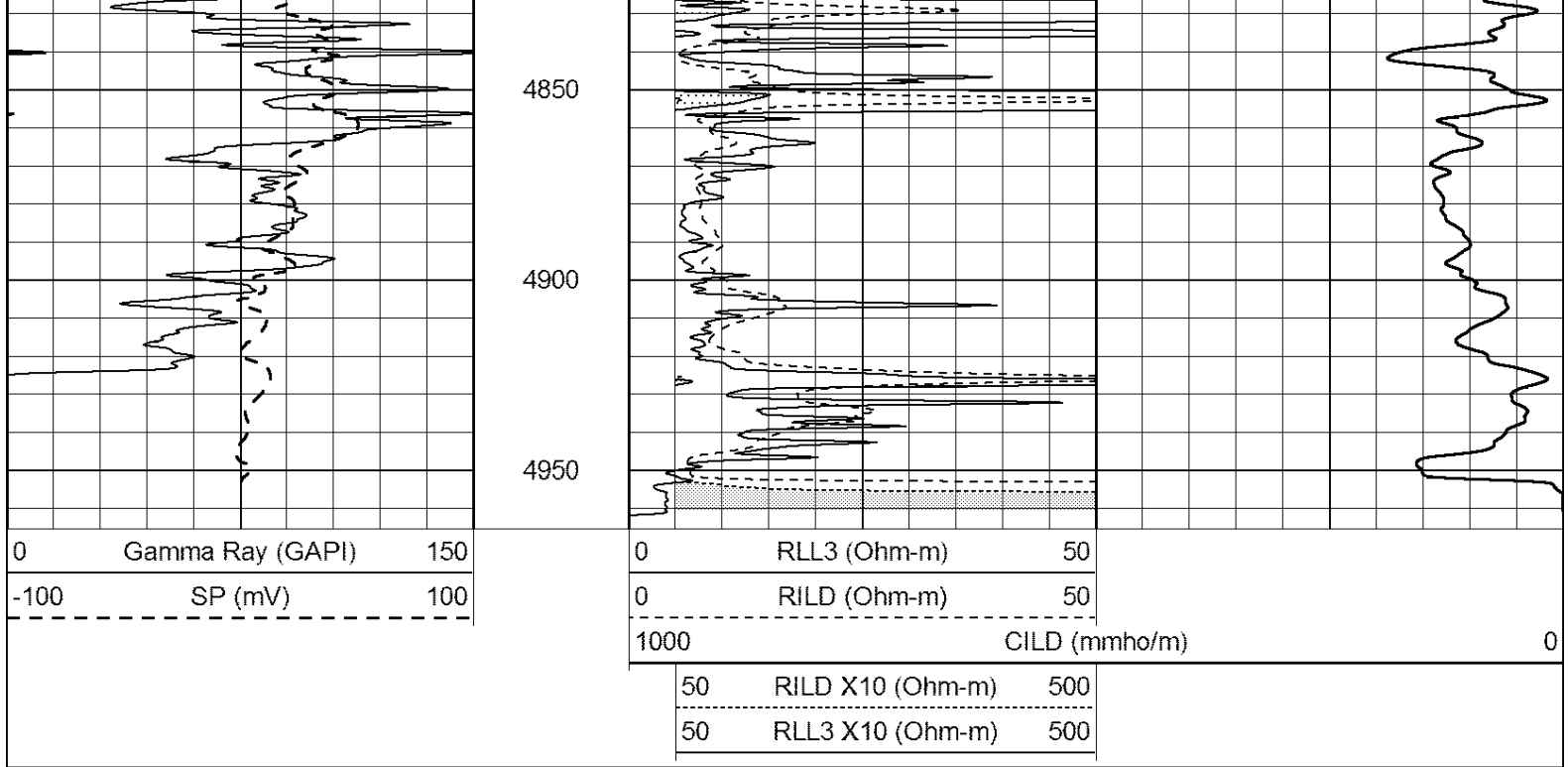
4650

4700

4750

4800





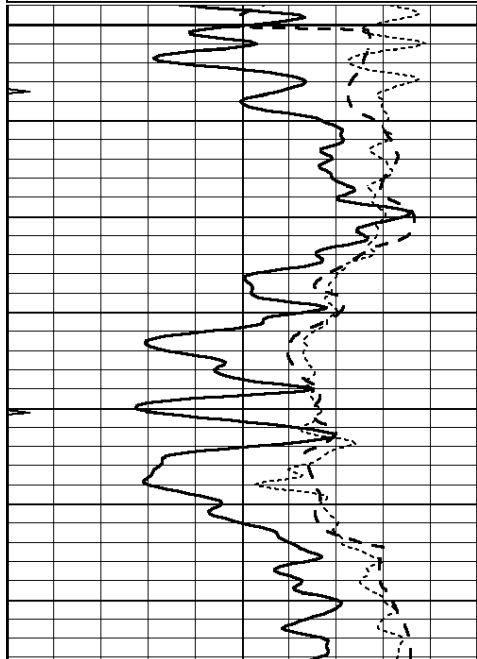
SUPERIOR
Hays,
Kansas

MAIN SECTION

Database File: 408753ddn.db
 Dataset Pathname: pass3.8
 Presentation Format: dil
 Dataset Creation: Tue Apr 24 03:23:58 2012
 Charted by: Depth in Feet scaled 1:240

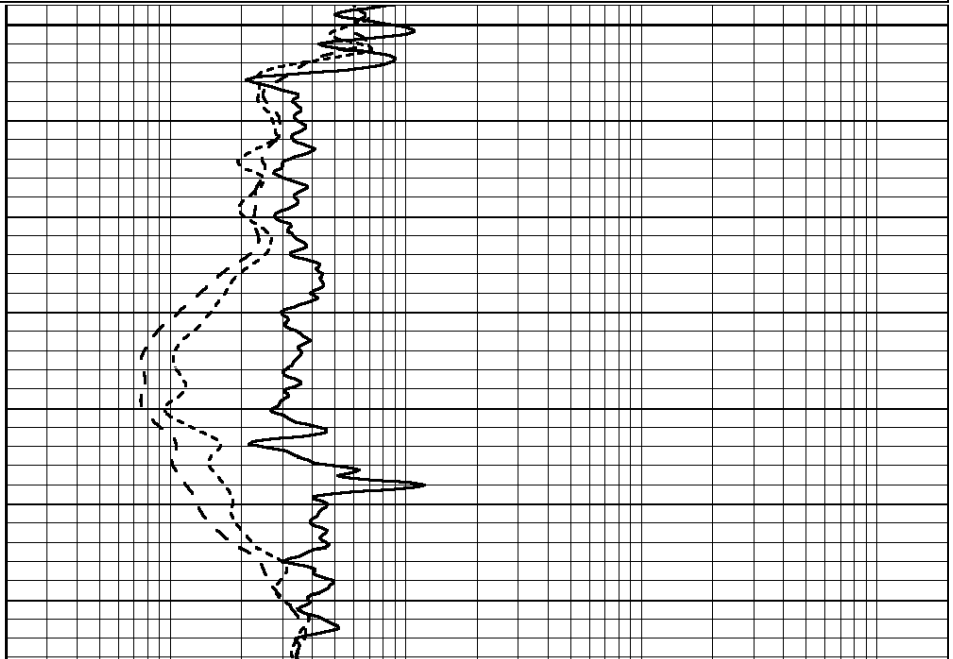
0	GAMMA RAY (GAPI)	150
-100	SP (mV)	100
-250	Rxo/Rt	50
0	MINMK	20

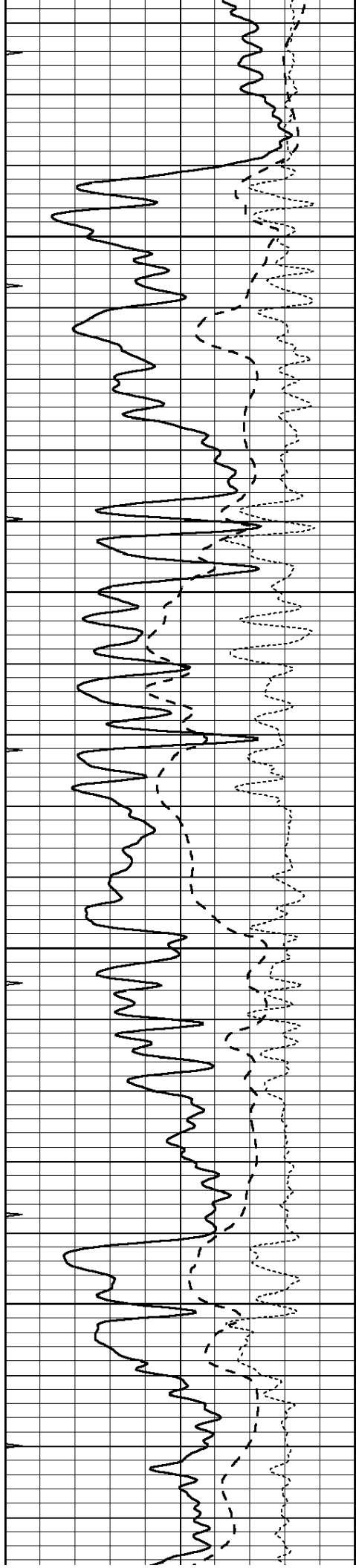
0.2	SHALLOW GUARD (Ohm-m)	2000
0.2	DEEP INDUCTION (Ohm-m)	2000
0.2	MEDIUM INDUCTION (Ohm-m)	2000



3400

3450



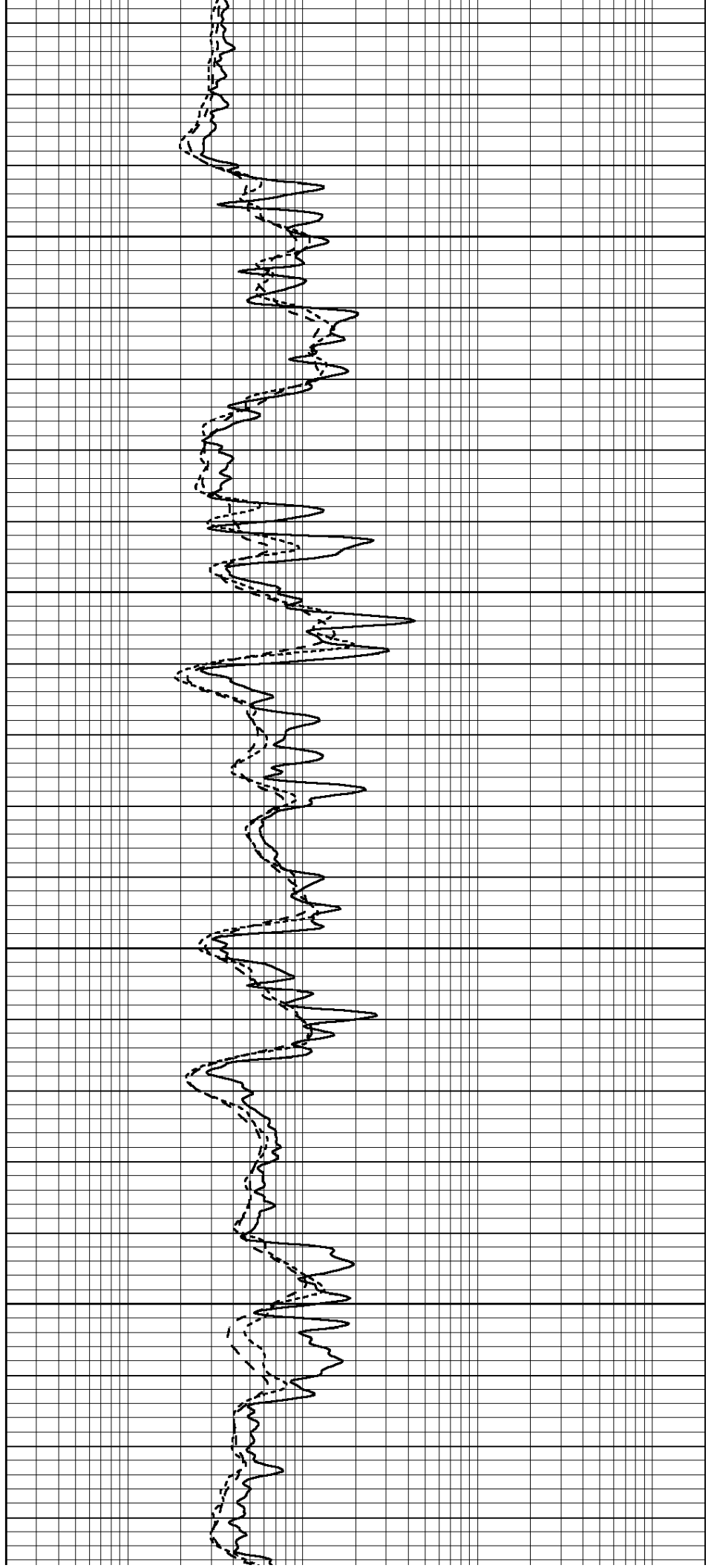


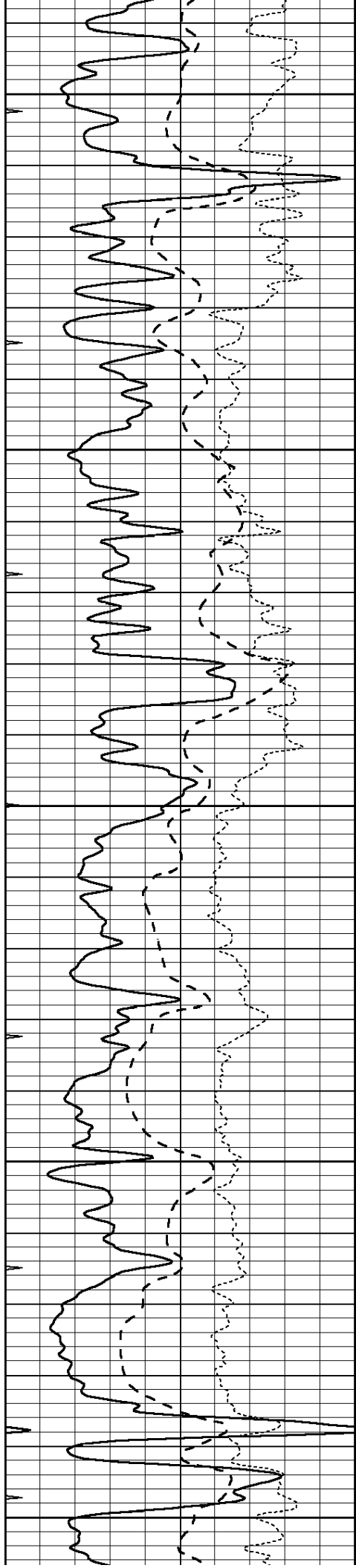
3500

3550

3600

3650





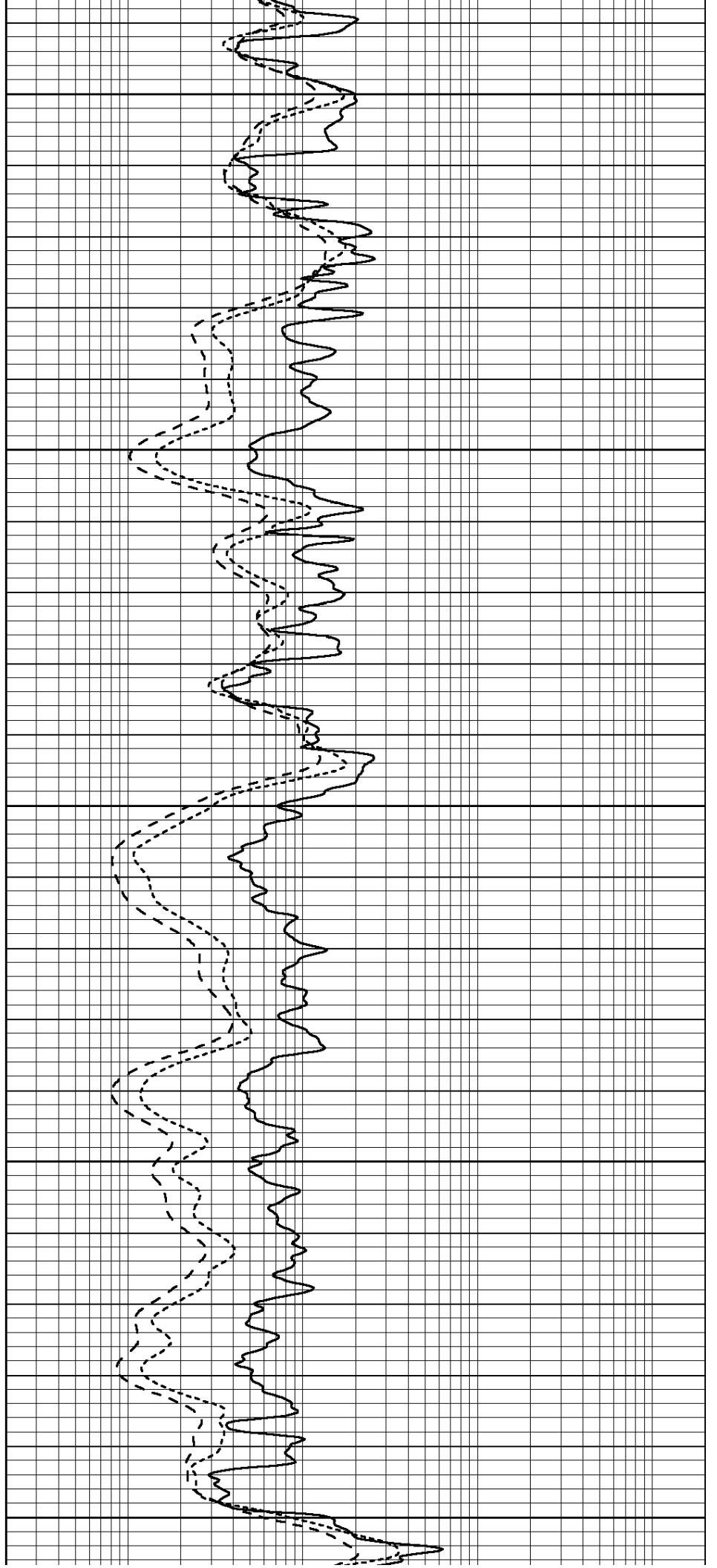
3700

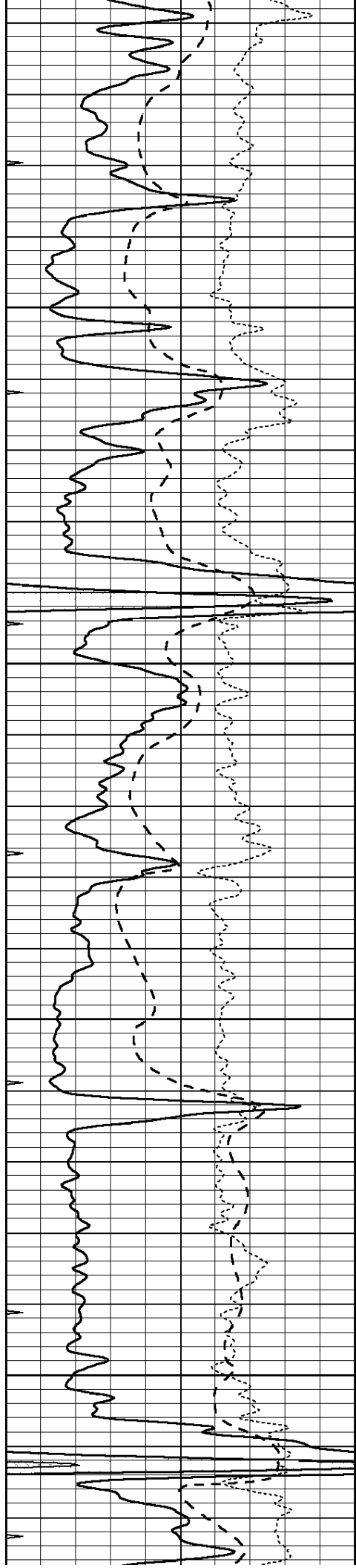
3750

3800

3850

3900



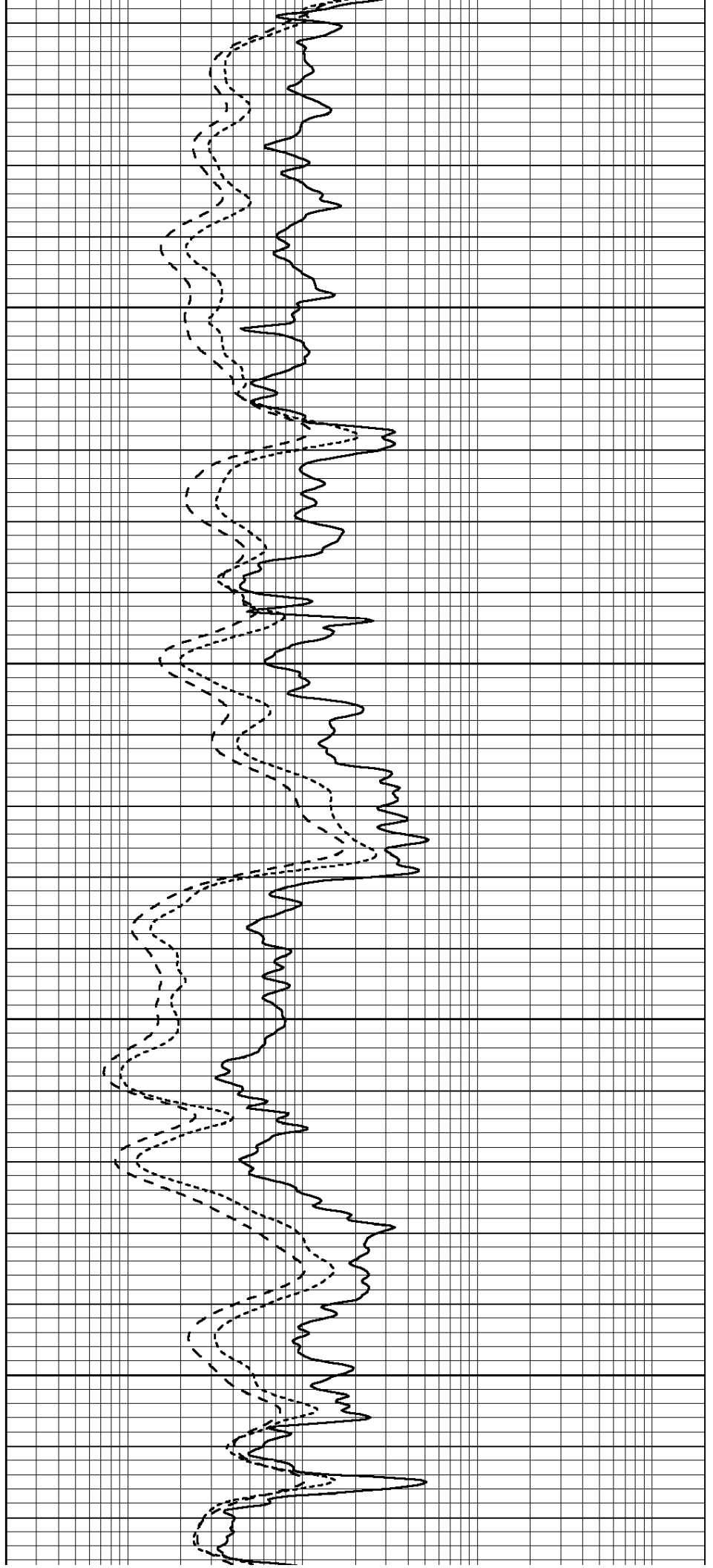


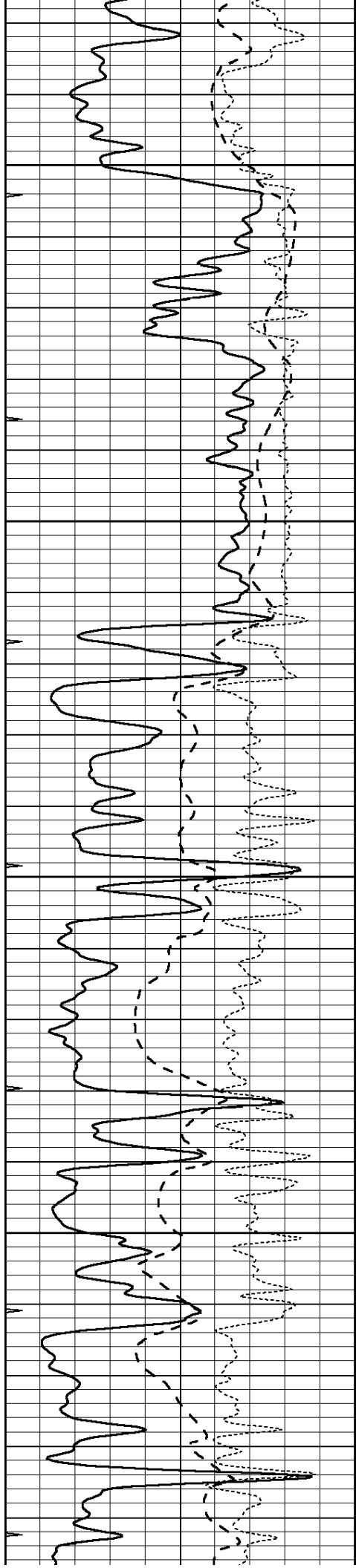
3950

4000

4050

4100



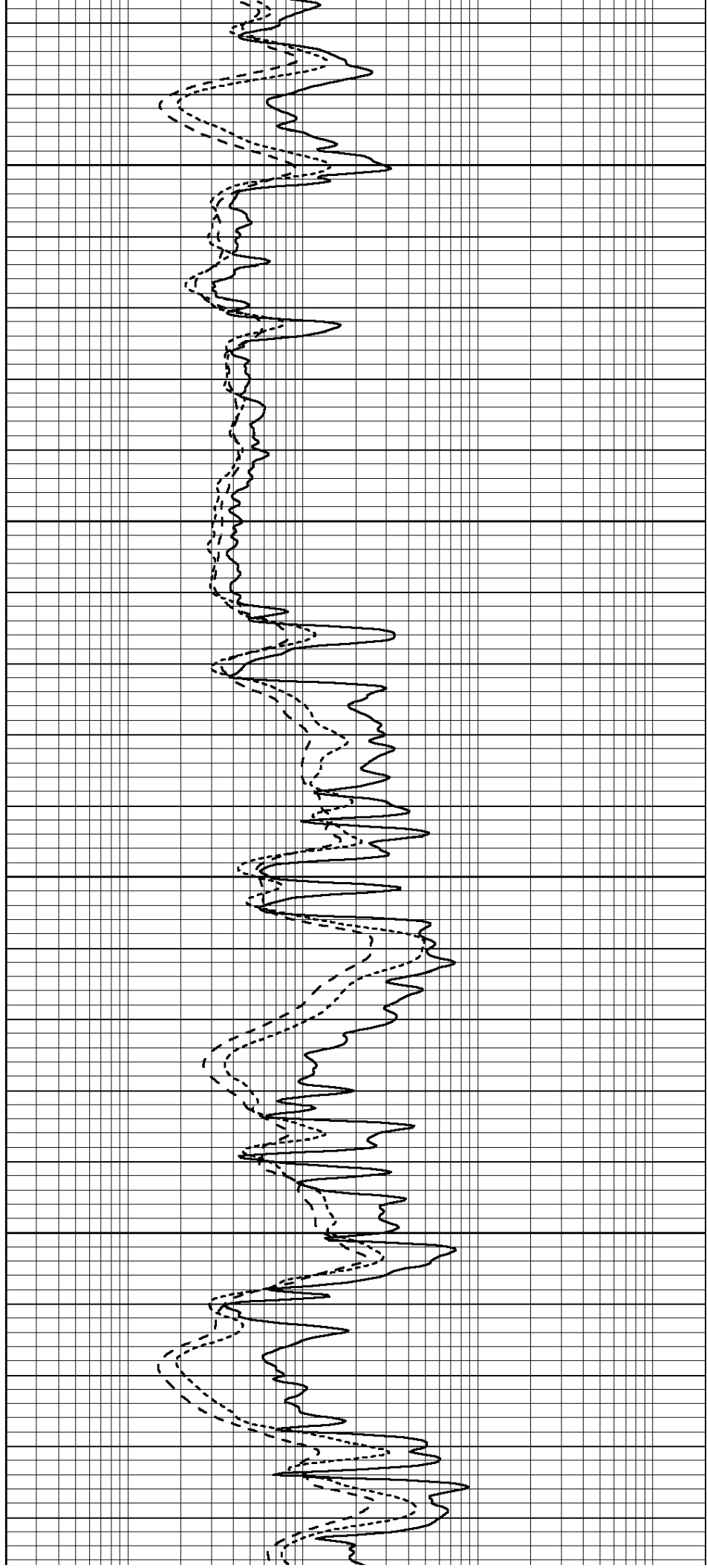


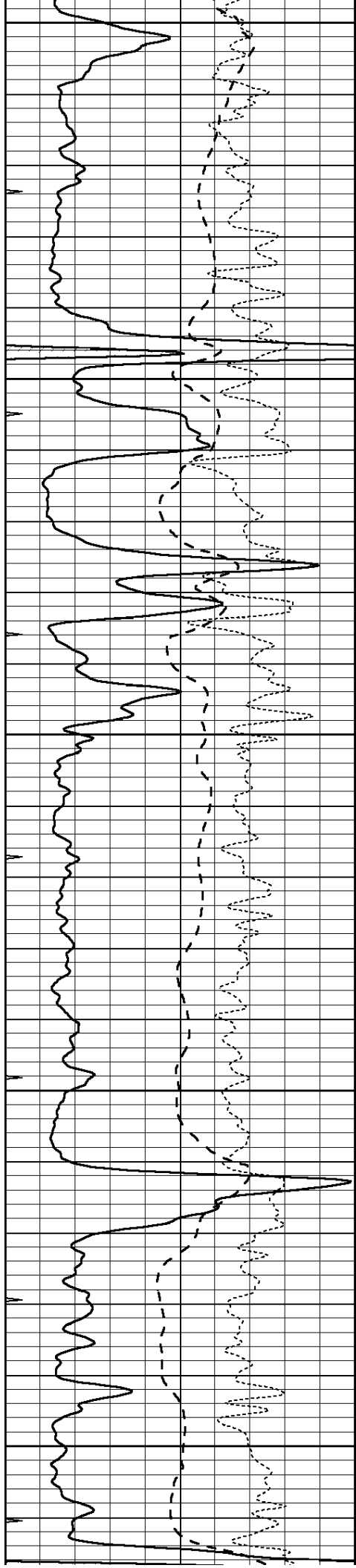
4150

4200

4250

4300





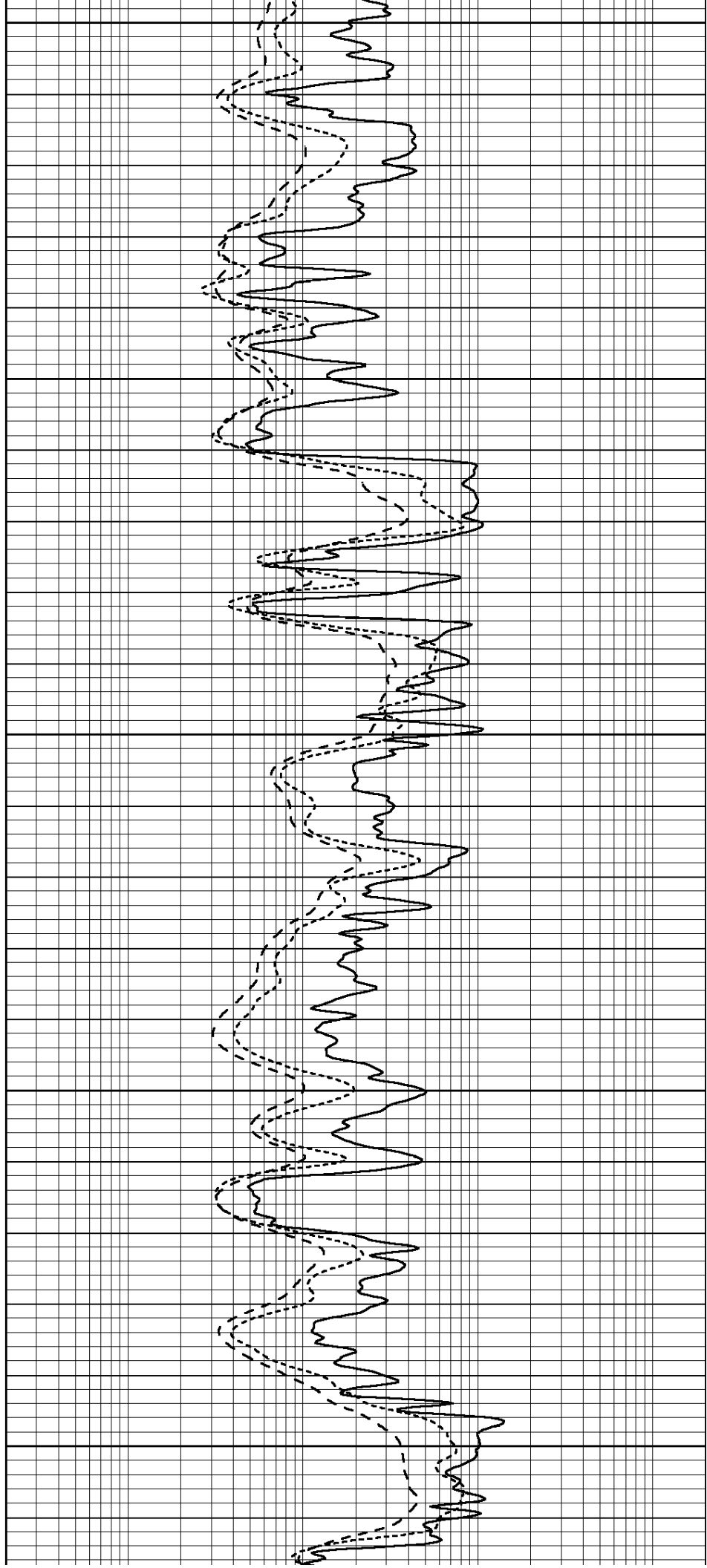
4350

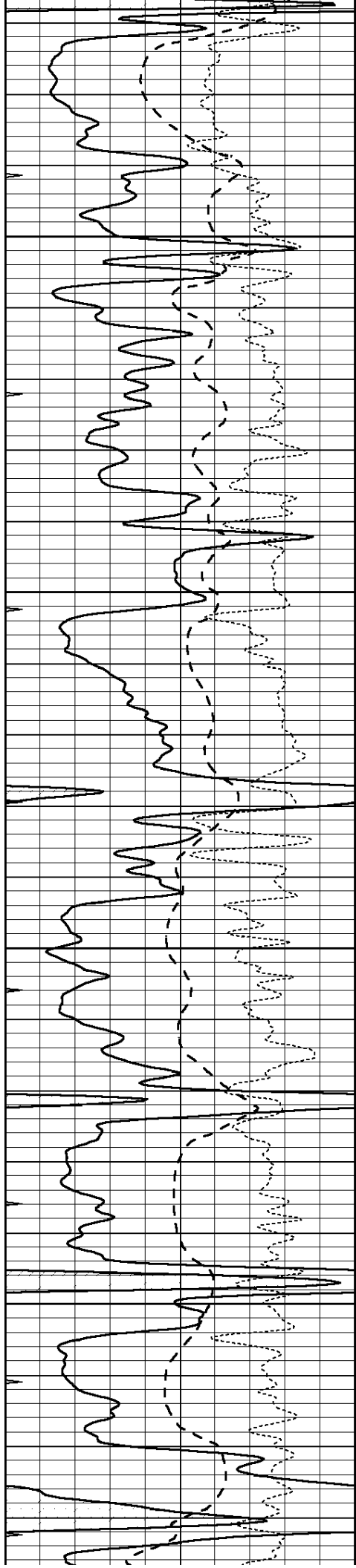
4400

4450

4500

4550



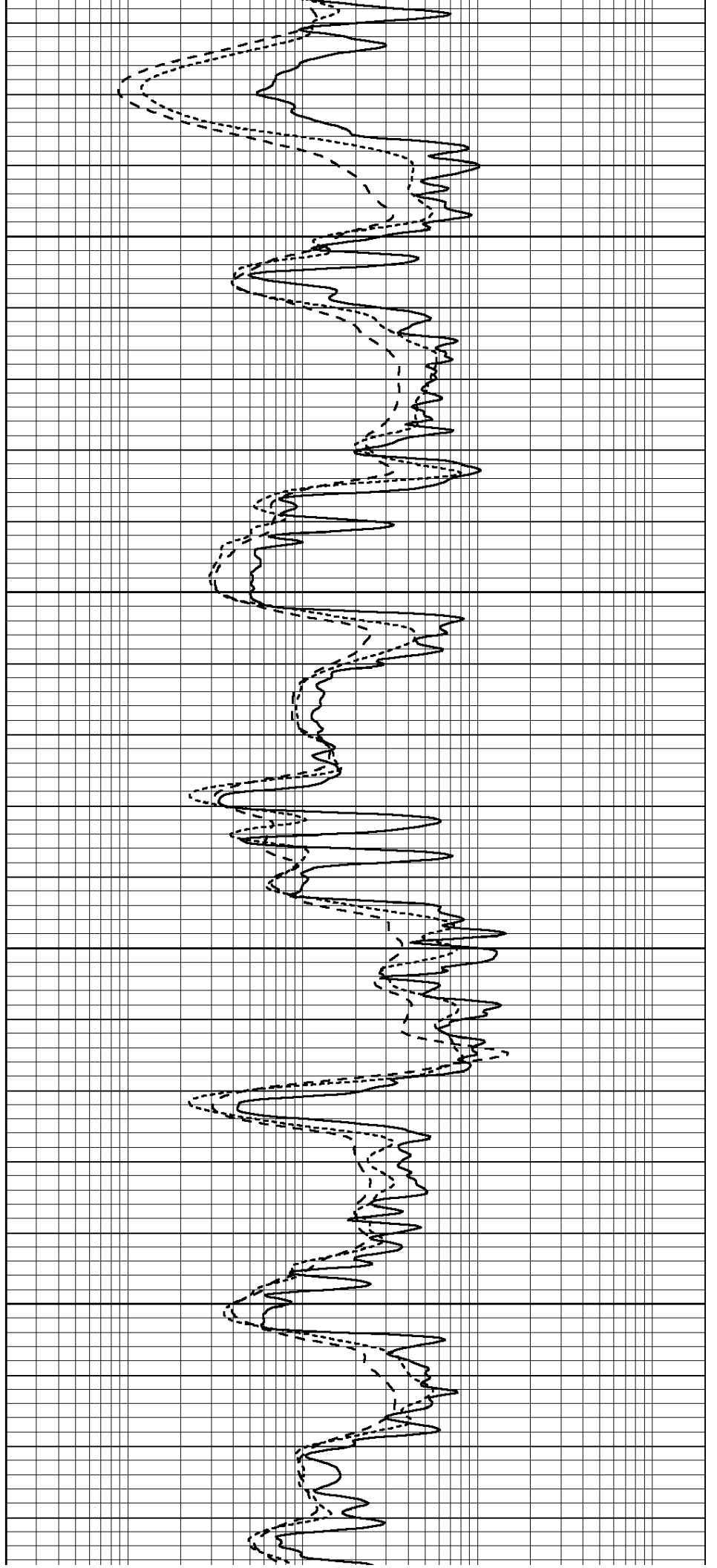


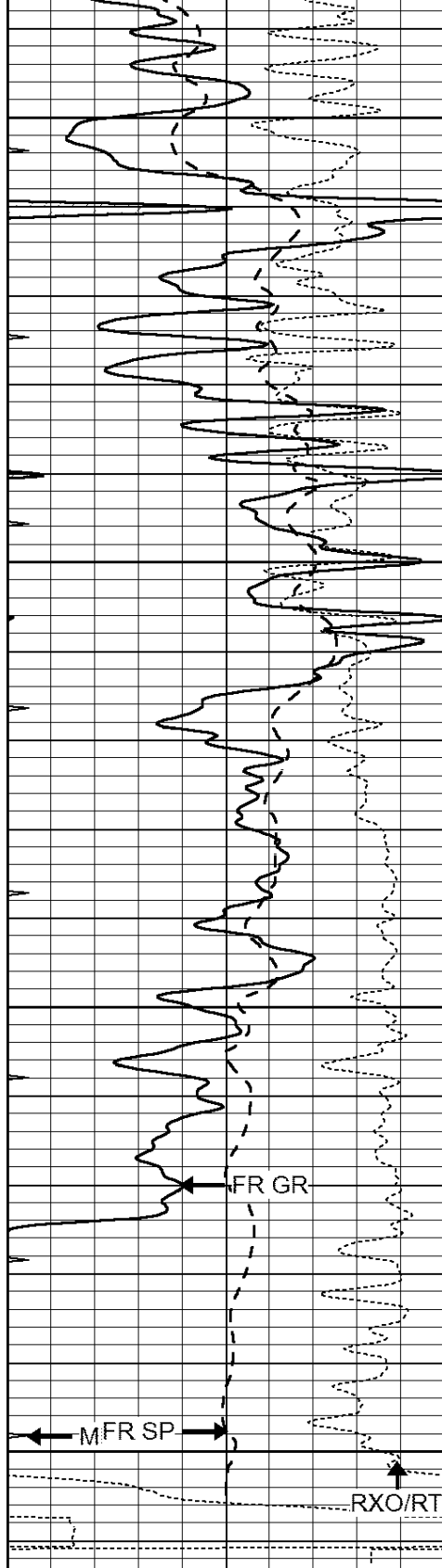
4600

4650

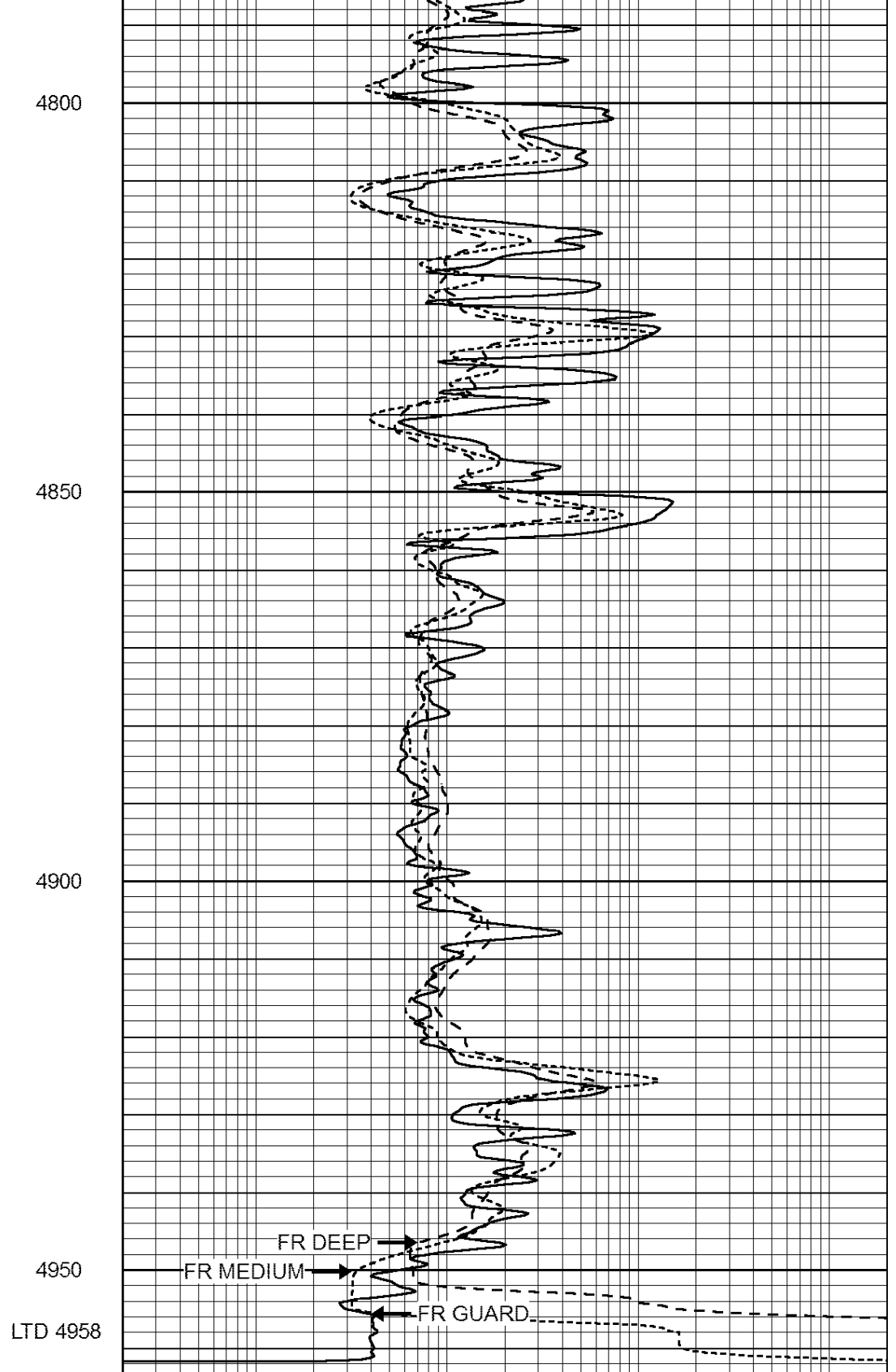
4700

4750





0	GAMMA RAY (GAPI)	150
-100	SP (mV)	100
-250	Rxo/Rt	50
0	MINMK	20



0.2	SHALLOW GUARD (Ohm-m)	2000
0.2	DEEP INDUCTION (Ohm-m)	2000
0.2	MEDIUM INDUCTION (Ohm-m)	2000



SUPERIOR
Well Services

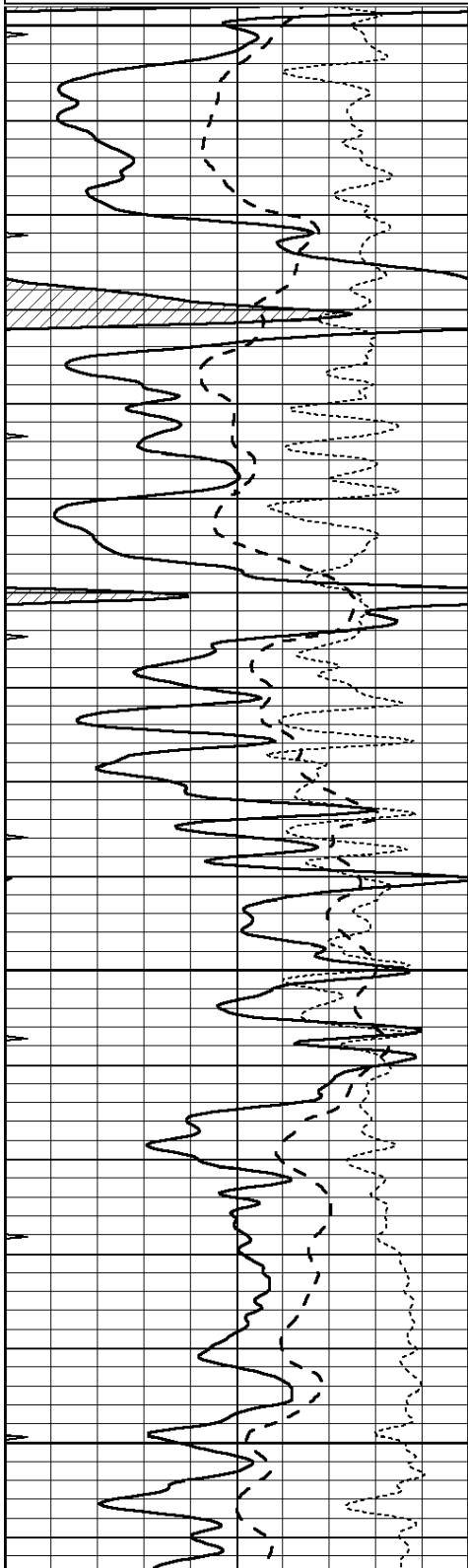
REPEAT SECTION



Database File: 408753ddn.db
 Dataset Pathname: pass2.12
 Presentation Format: dil
 Dataset Creation: Tue Apr 24 03:28:03 2012
 Charted by: Depth in Feet scaled 1:240

0	GAMMA RAY (GAPI)	150
-100	SP (mV)	100
-250	Rxo/Rt	50
0	MINMK	20

0.2	SHALLOW GUARD (Ohm-m)	2000
0.2	DEEP INDUCTION (Ohm-m)	2000
0.2	MEDIUM INDUCTION (Ohm-m)	2000

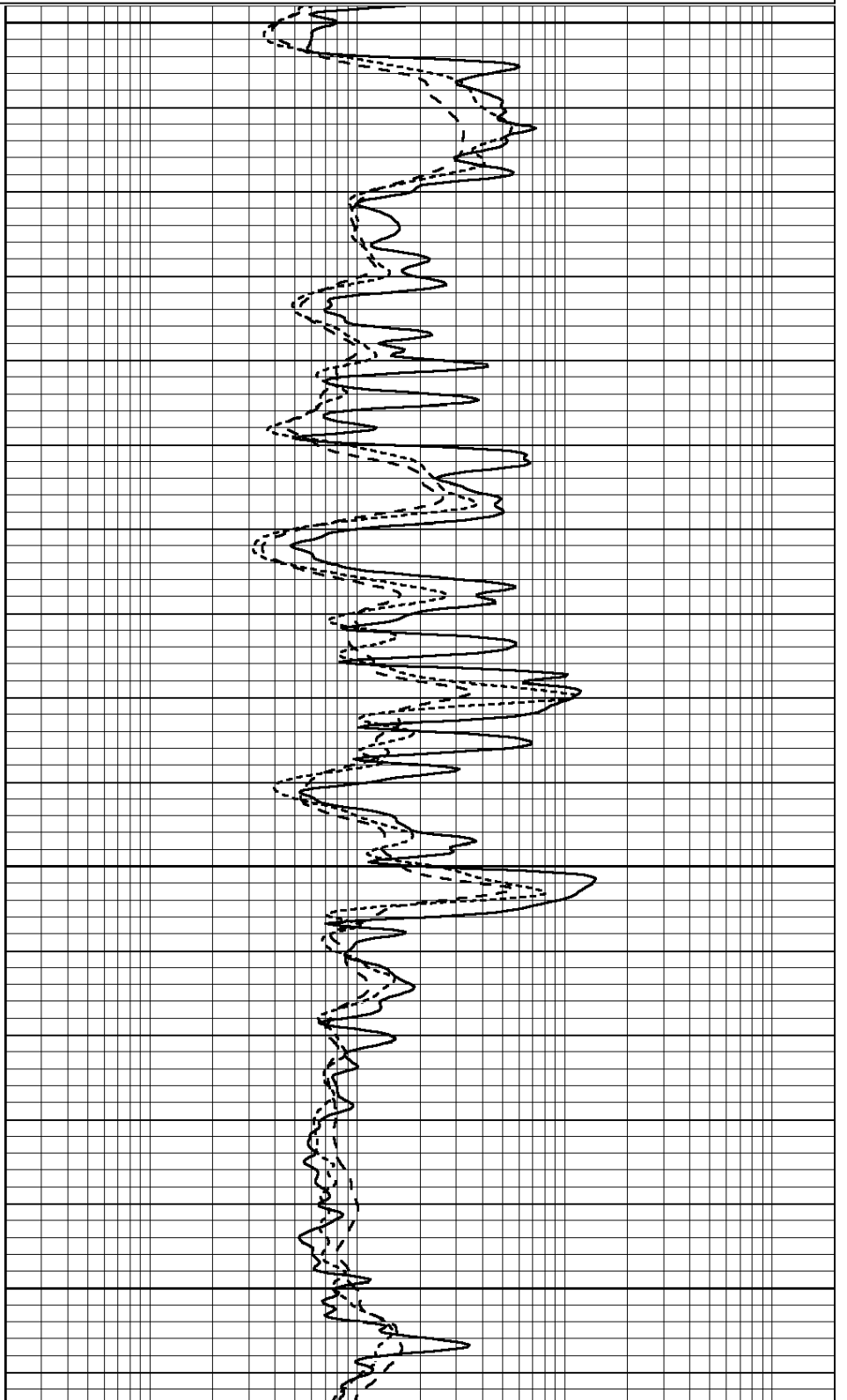


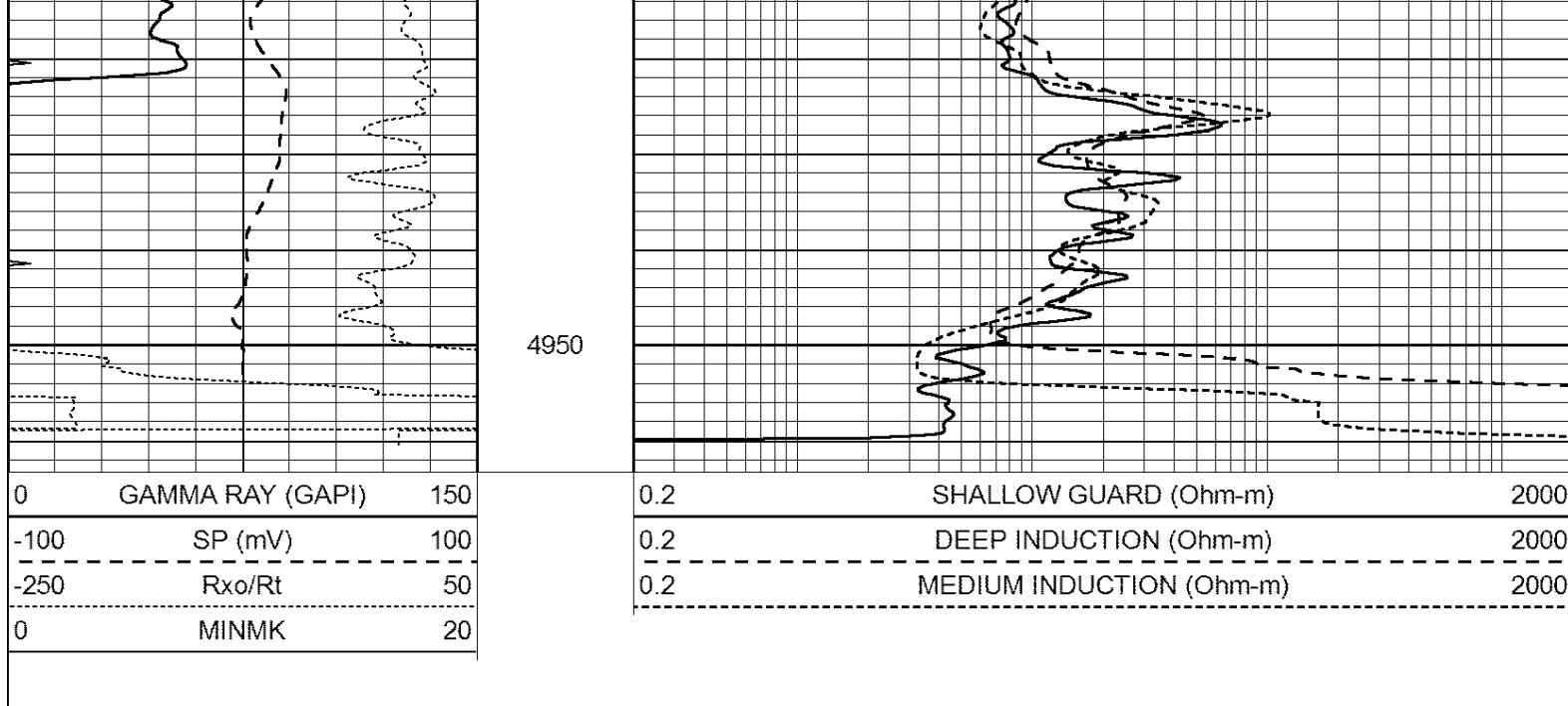
4750

4800

4850

4900





Calibration Report

Database File: 408753ddn.db
 Dataset Pathname: pass3.8
 Dataset Creation: Tue Apr 24 03:23:58 2012

Dual Induction Calibration Report

Serial-Model: DIL4-GEAR
 Performed: Sun Apr 15 16:36:15 2012

Loop:	Readings			References			Results	
	Air	Loop		Air	Loop		m	b
Deep	0.008	0.666	V	0.000	400.000	mmho/m	570.000	2.000
Medium	-0.003	0.769	V	0.000	462.500	mmho/m	560.000	1.000
Internal:	Zero	Cal		Zero	Cal		m	b
Deep	0.013	0.651	V	0.000	400.000	mmho/m	627.541	-8.365
Medium	0.020	0.754	V	0.000	462.500	mmho/m	630.311	-12.549

Litho Density Calibration Report

Serial: 003N Model: PRB
 Performed Tue Sep 08 14:14:44 2009

Litho Density Calibration

	Background	Magnesium	Aluminum	Sandstone	
Window 1	2042.6	12312.8	4225.8	13758.4	cps
Window 2	1855.8	10134.7	3624.2	11113.1	cps
Window 3	1639.4	6760.2	2716.3	7260.3	cps
Window 4	466.4	469.2	466.1	476.5	cps
Long Space	0.0	8278.9	1768.4	9257.4	cps
Short Space	2.2	2377.3	1544.1	2574.2	cps
Rho		1.7100	2.5900	1.3800	g/cc
Pe			2.5700	1.5500	

Rib Angle : 44.4 Rib Slope : 0.979 Density/Spine Ratio : 0.549
 Spine Angle : 74.4 Spine Slope : 3.577 Spine Intercept : -18.8

	Readings	Reference	
Low Ref	2.0	7.2	
High Ref	4.0	15.0	
	Gain: 3.8		Offset: -0.3

Compensated Neutron Calibration Report

Serial Number: 070808
 Tool Model: Probe

PRE-SURVEY VERIFICATION

Detector	Readings	Measured	Target
Short Space	cps		
Long Space	cps	pu	pu

POST-SURVEY VERIFICATION

Detector	Readings	Measured	Target
Short Space	cps		
Long Space	cps	pu	pu

Gamma Ray Calibration Report

Serial Number: 070559
 Tool Model: OPEN_GR
 Performed: Mon Apr 16 22:08:41 2012

Calibrator Value: 1.0 GAPI

Background Reading: 0.0 cps
 Calibrator Reading: 1.0 cps

Sensitivity: 0.3000 GAPI/cps