



SUPERIOR
Hays,
Kansas

**COMPENSATED
NEUTRON / DENSITY
LOG**

Company CASTELLI EXPLORATION, INC.
Well THOMPSON #1-30
Field ALFORD
County KIOWA
State KANSAS

Company CASTELLI EXPLORATION, INC.
Well THOMPSON #1-30
Field ALFORD
County KIOWA
State KANSAS

Location: 1980' FNL & 330' FWL
API # : 15-097-21720-0000
Other Services DIL

SEC 30 TWP 30S RGE 18W

Permanent Datum GROUND LEVEL Elevation 2211
Log Measured From KELLY BUSHING 12' A.G.L.
Drilling Measured From KELLY BUSHING
Elevation
K.B. 2223
D.F. 2221
G.L. 2211

Date	4/20/12		
Run Number	ONE		
Depth Driller	5250		
Depth Logger	5252		
Bottom Logged Interval	5228		
Top Log Interval	4200		
Casing Driller	13 3/8" @ 622		
Casing Logger	620		
Bit Size	7 7/8		
Type Fluid in Hole	CHEMICAL MUD	CHLORIDES 10000 PPM	
Density / Viscosity	9.3/53		
pH / Fluid Loss	9.0/12.0		
Source of Sample	FLOWLINE		
Rin @ Meas. Temp	.56 @ 71F		
Rmf @ Meas. Temp	.42 @ 71F		
Rmc @ Meas. Temp	.67 @ 71F		
Source of Rmf / Rmc	MEASURED		
Rin @ BHT	.31 @ 127F		
Time Circulation Stopped	2 HOURS		
Time Logger on Bottom			
Maximum Recorded Temperature	127F		
Equipment Number	680		
Location	HAYS, KS.		
Recorded By	JASON CAPPELLUCCI		
Witnessed By	TOM CASTELLI	RICK POPP	

<<< Fold Here >>>

All interpretations are opinions based on inferences from electrical or other measurements and we cannot and do not guarantee the accuracy or correctness of any interpretation, and we shall not, except in the case of gross or willful negligence on our part, be liable or responsible for any loss, costs, damages, or expenses incurred or sustained by anyone resulting from any interpretation made by any of our officers, agents or employees. These interpretations are also subject to our general terms and conditions set out in our current Price Schedule.

Comments

THANK YOU FOR USING SUPERIOR WELL SERVICE (785) 628-6395
DIRECTIONS
GREENSBURG, KS. - 13 1/2 S. (FIRST CO. RD. PAST PUMPING STATION)
1 W. - 1/2 S. - E. INTO

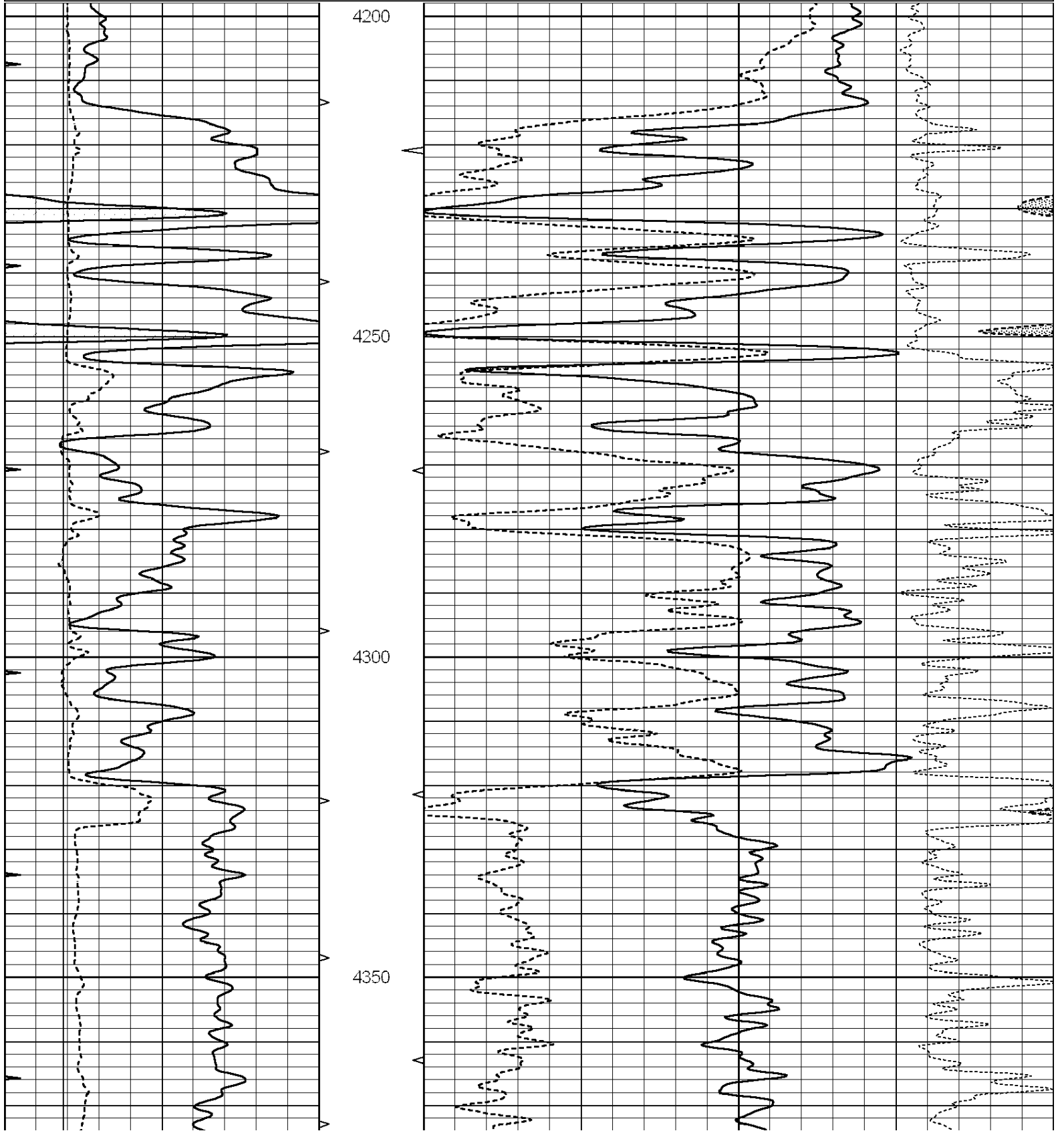


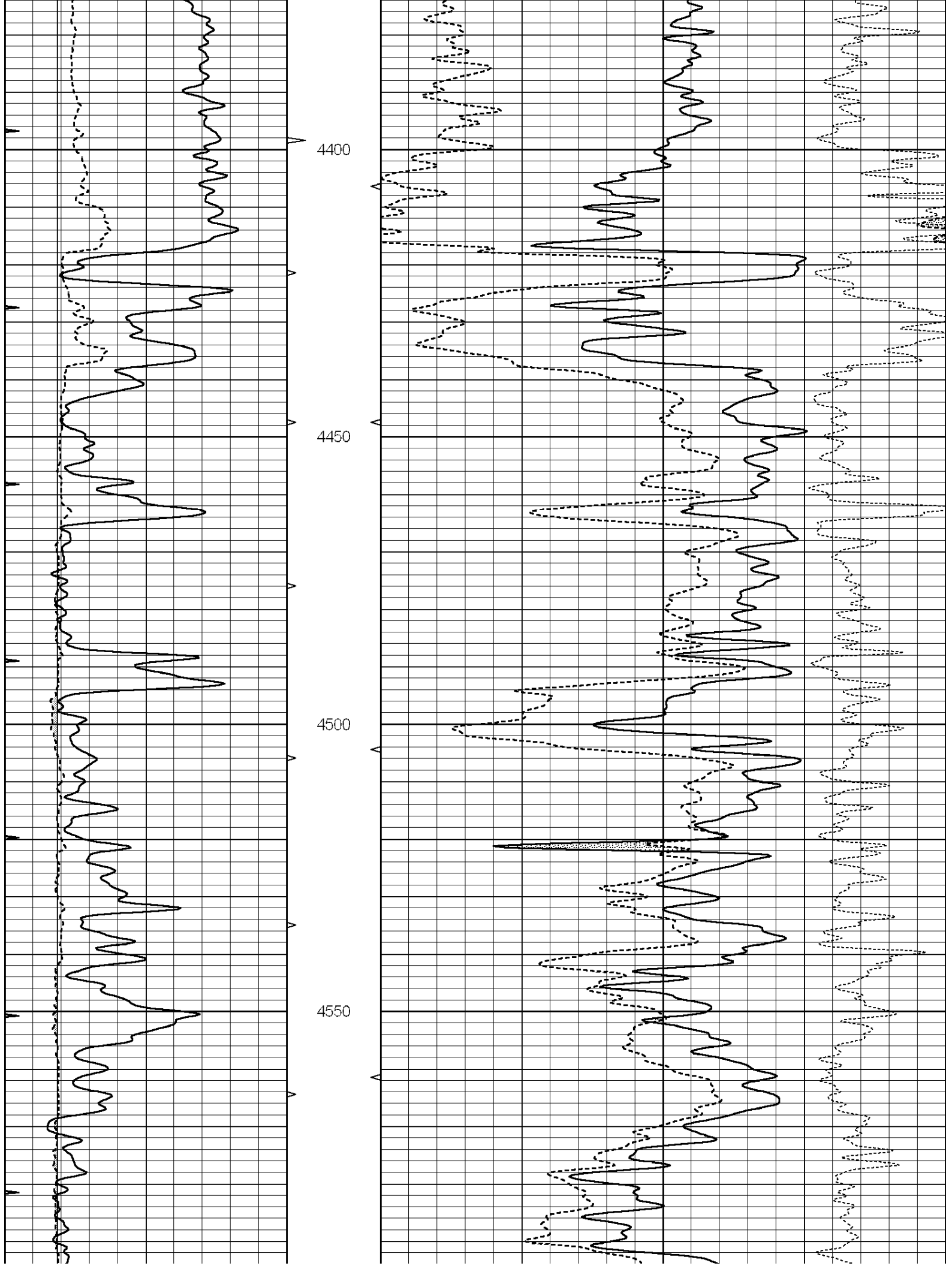
SUPERIOR
Hays,
Kansas

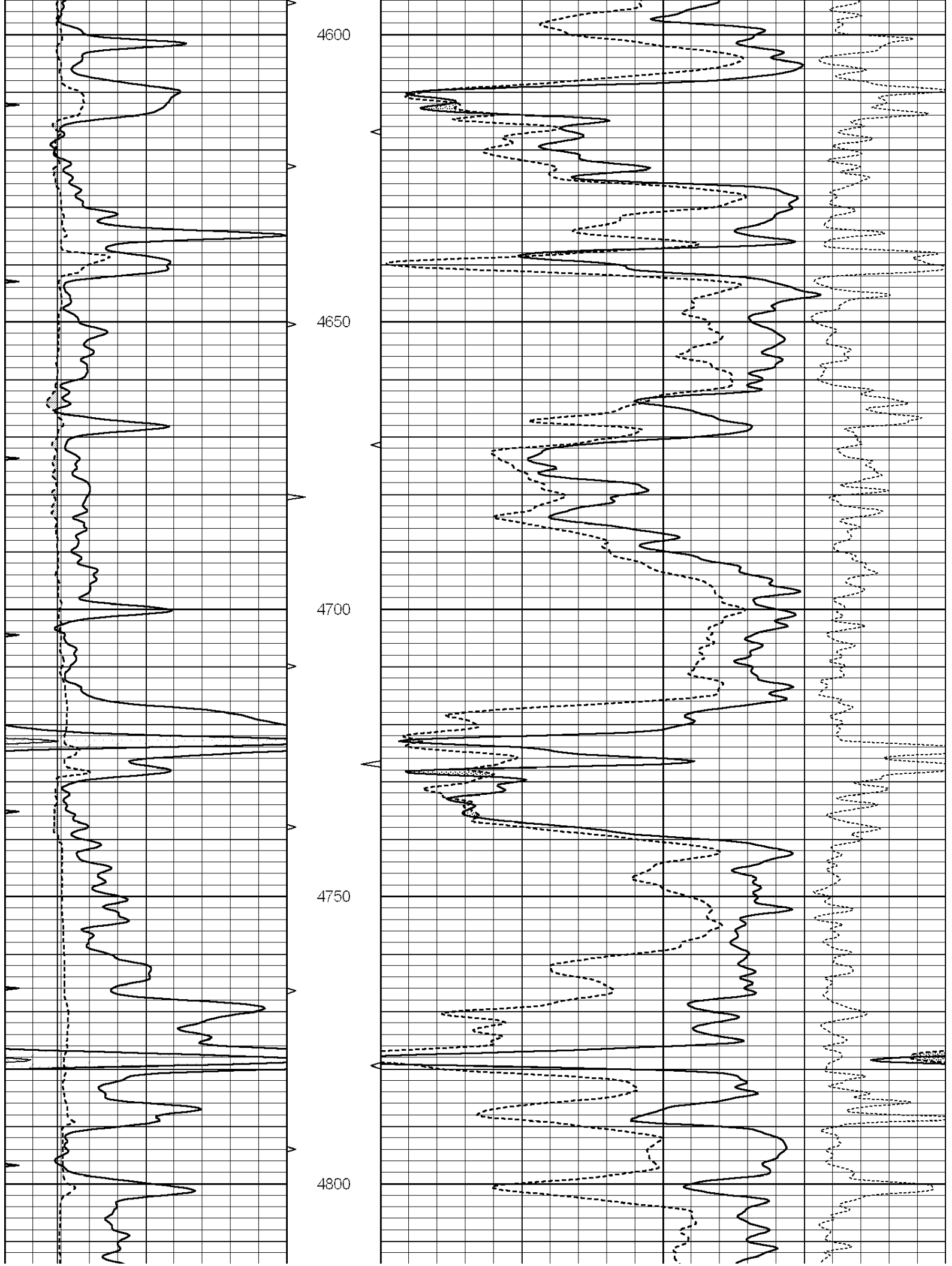
MAIN SECTION

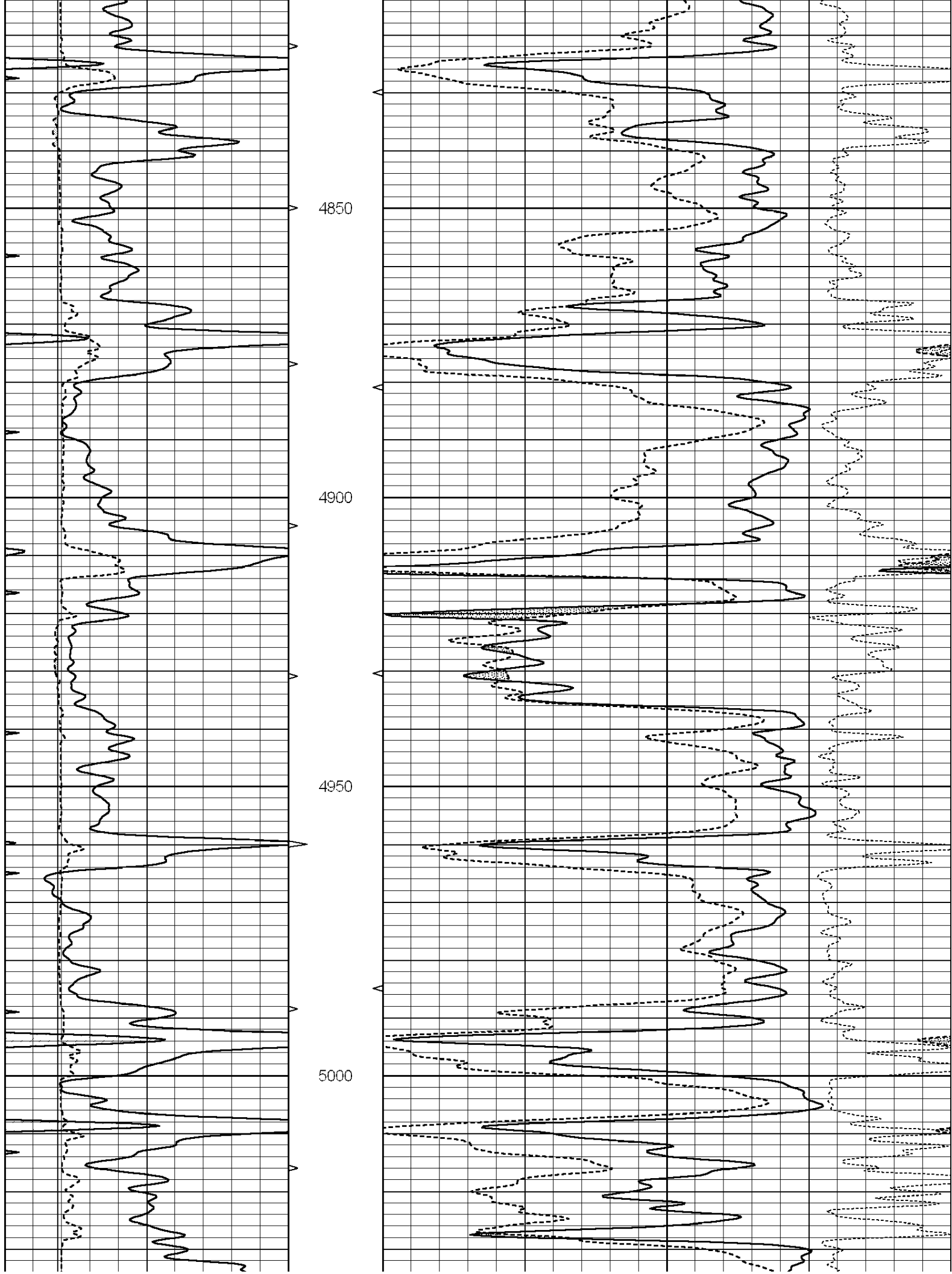
Database File: 008845ddn.db
 Dataset Pathname: pass3.1
 Presentation Format: _den_neu
 Dataset Creation: Fri Apr 20 11:09:16 2012 by Calc Open-Cased 090629
 Charted by: Depth in Feet scaled 1:240

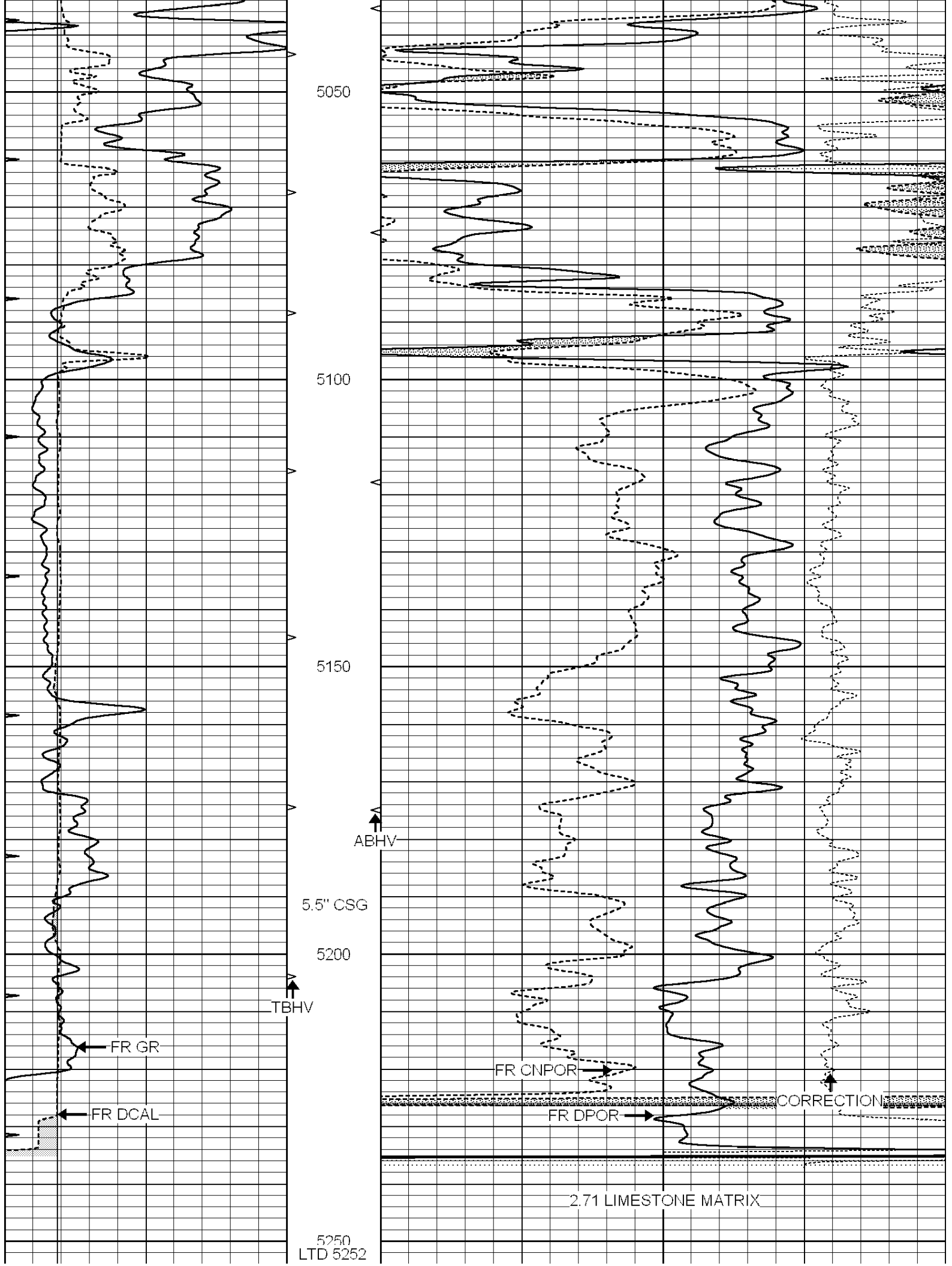
0	GAMMA RAY (GAPI)	150	AVTX	30	COMPENSATED DENSITY (pu)	-10
6	CALIPER (in)	16	10 (ft3)	0 30	COMPENSATED NEUTRON (pu)	-10
0	MINMK	20	BVTX		-0.25 CORRECTION (g/cc)	0.25
			0 (ft3)	10		











5050

5100

5150

ABHV

5.5" CSG

5200

TBHV

FR GR

FR CNPOR

CORRECTION

FR DCAL

FR DPOR

2.71 LIMESTONE MATRIX

0	GAMMA RAY (GAPI)	150	AVTX	30	COMPENSATED DENSITY (pu)	-10	
6	CALIPER (in)	16	10 (ft3)	0	30	COMPENSATED NEUTRON (pu)	-10
0	MINMK	20	BVTX		-0.25	CORRECTION (g/cc)	0.25
			0 (ft3)	10			

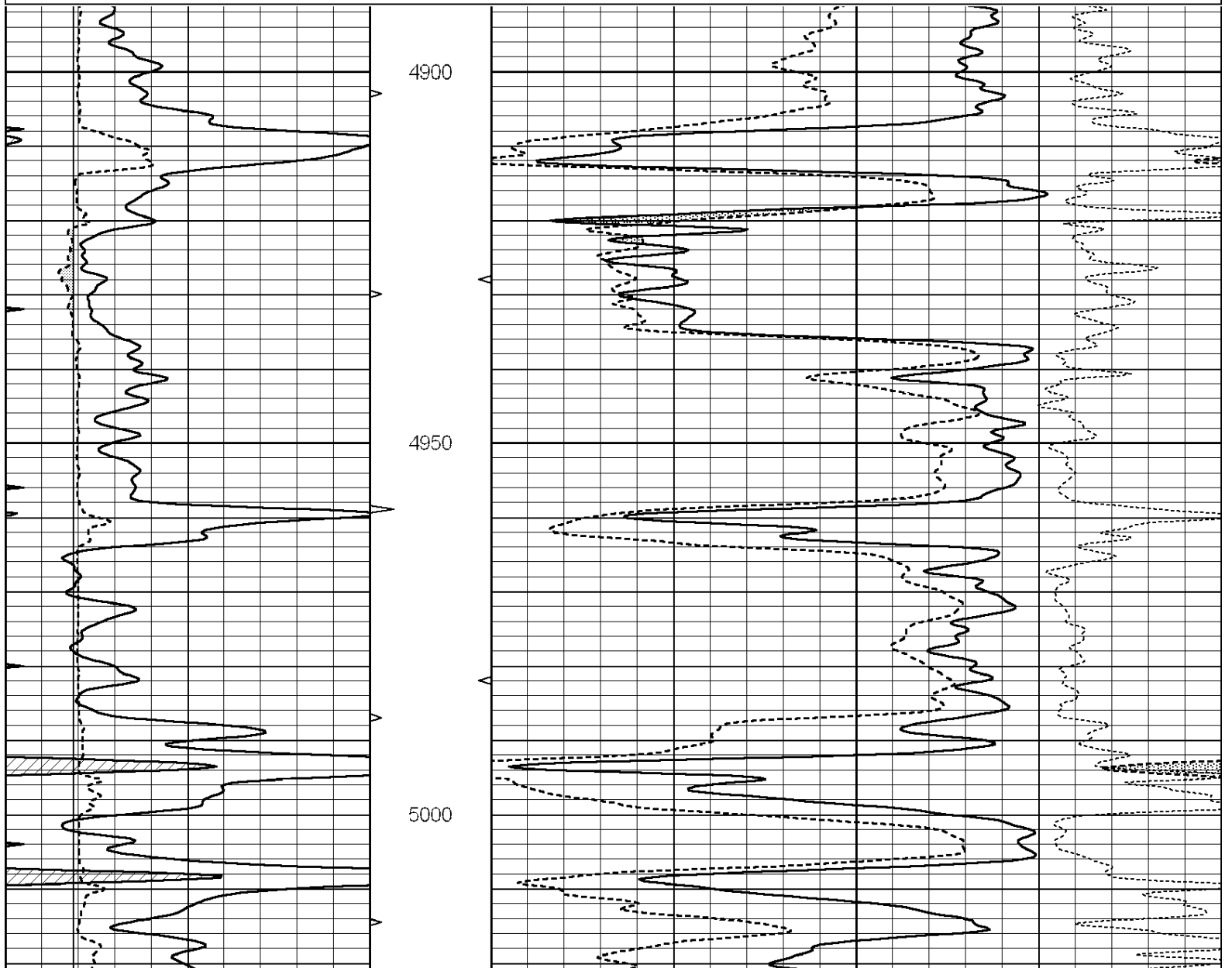


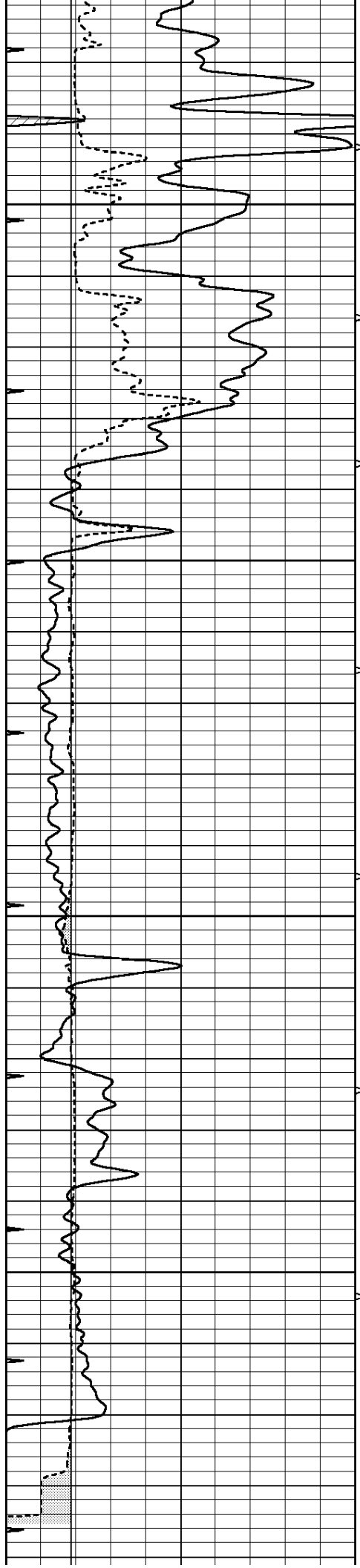
SUPERIOR
Hays,
Kansas

REPEAT SECTION

Database File: 008845ddn.db
 Dataset Pathname: pass2.1
 Presentation Format: _den_neu
 Dataset Creation: Fri Apr 20 10:48:35 2012 by Calc Open-Cased 090629
 Charted by: Depth in Feet scaled 1:240

0	GAMMA RAY (GAPI)	150	AVTX	30	COMPENSATED DENSITY (pu)	-10	
6	CALIPER (in)	16	10 (ft3)	0	30	COMPENSATED NEUTRON (pu)	-10
0	MINMK	20	BVTX		-0.25	CORRECTION (g/cc)	0.25
			0 (ft3)	10			



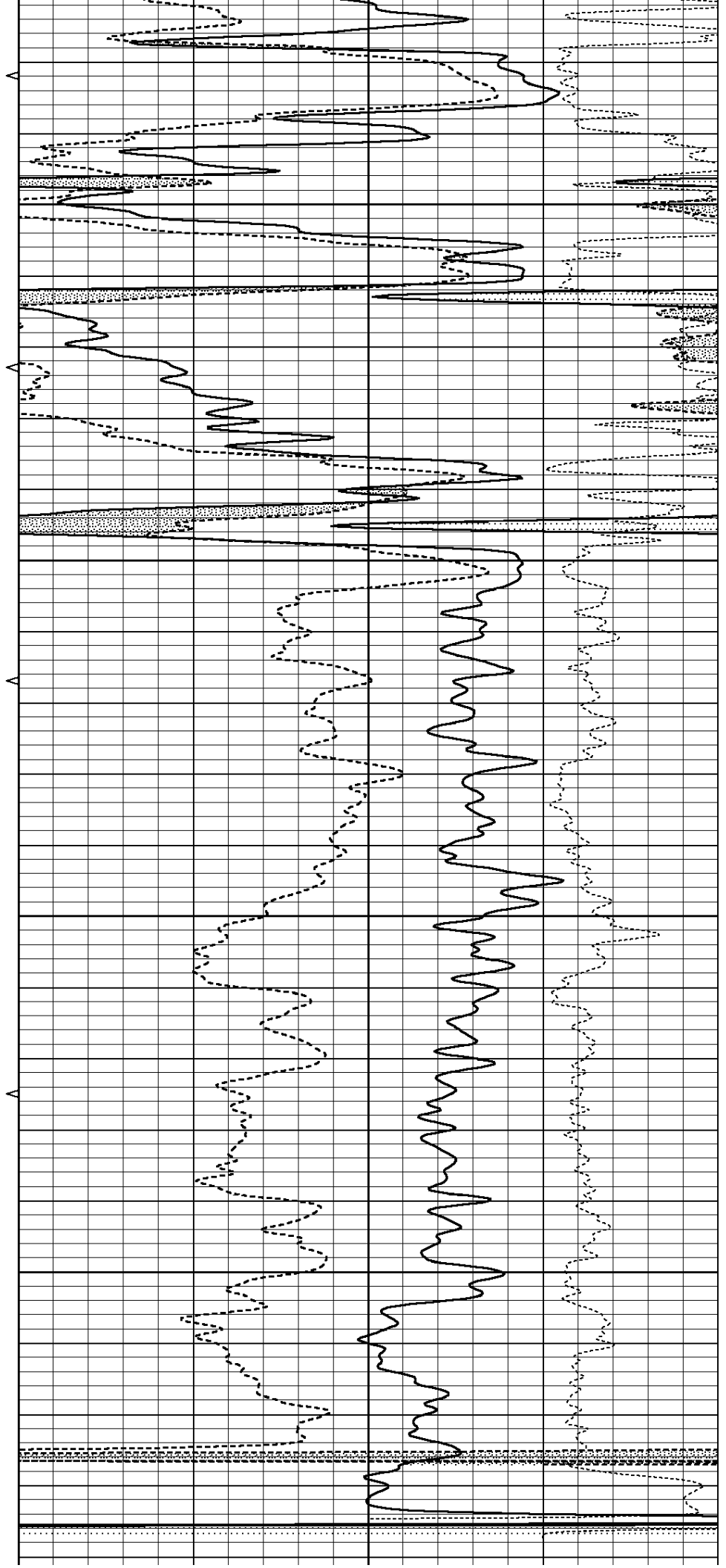


5050

5100

5150

5200



	<u>Density</u>		<u>Far Detector</u>	<u>Near Detector</u>	
Magnesium	1.710	g/cc	1015.91	497.51	cps
Aluminum	2.600	g/cc	227.67	350.20	cps

Spine Angle = 76.79

Density/Spine Ratio = 0.579

	<u>Size</u>		<u>Reading</u>	
Small Ring	8.00	in	2.25	V
Large Ring	14.00	in	4.37	V

Compensated Neutron Calibration Report

Serial Number: 6I
Tool Model: G

CALIBRATION

Detector	Readings	Target	Normalization
Short Space	1.00 cps	1.00 cps	1.0000
Long Space	1.00 cps	1.00 cps	1.0000

Gamma Ray Calibration Report

Serial Number:	#8
Tool Model:	OPEN
Performed:	Mon Jun 13 16:56:43 2011
Calibrator Value:	150.0 GAPI
Background Reading:	0.0 cps
Calibrator Reading:	175.0 cps
Sensitivity:	0.8371 GAPI/cps