



Pioneer Energy Services

Sector Bond / Gamma Ray  
CCL Log

15-051-26426-00-00

Company E&B Natural Resources Management  
Well Marshal A No. 43WD  
Field Bemis-Shutts  
County Ellis  
State Kansas

Location 350' FNL & 2290' FWL  
SW-NE-NE-NW/4

Sec: 31 Twp: 11S Rge: 17W

Permanent Datum Ground Level Elevation 2122  
Log Measured From Kelly Bushing 5 Ft. Above Perm. Datum  
Drilling Measured From Kelly Bushing

Other Services  
Perforate  
Elevation  
K.B. 2127  
D.F.  
G.L. 2122

Run Number	One	
Date Survey	1/2/2013	
Date Cementing	12/14/2012	
Type Cementing Operation	Primary	
Depth Driller	4169	
Depth Logger	4165	
Logged Interval	4163 to 1000	to
Casing Driller	7" @ T.D.	@
Float Collar -- D.V. Tool		2645
Squeeze Depth		
Amount & Type Cement		
Amount & Type Admix		
Type Fluid In Hole	Water	
Fluid Level	1055	
Salinity PPM CL		
Weight lb/gal -- Vis.		
Approx. Logged Cement Top		
Calculated Cement Top		
Max. Hole Temperature	115	
Tool No.	R-1	
Spacing Recorded	3-5	
Equipment -- Location	72	Hays
Recorded By	K. Ladrigan	
Witnessed By	Dave Jensen	

<<< Fold Here >>>

All interpretations are opinions based on inferences from electrical or other measurements and we cannot and do not guarantee the accuracy or correctness of any interpretation, and we shall not, except in the case of gross or willful negligence on our part, be liable or responsible for any loss, costs, damages, or expenses incurred or sustained by anyone resulting from any interpretation made by any of our officers, agents or employees. These interpretations are also subject to our general terms and conditions set out in our current Price Schedule.

Comments

Thank you for using Pioneer Energy Services, Inc. 785.625.3858

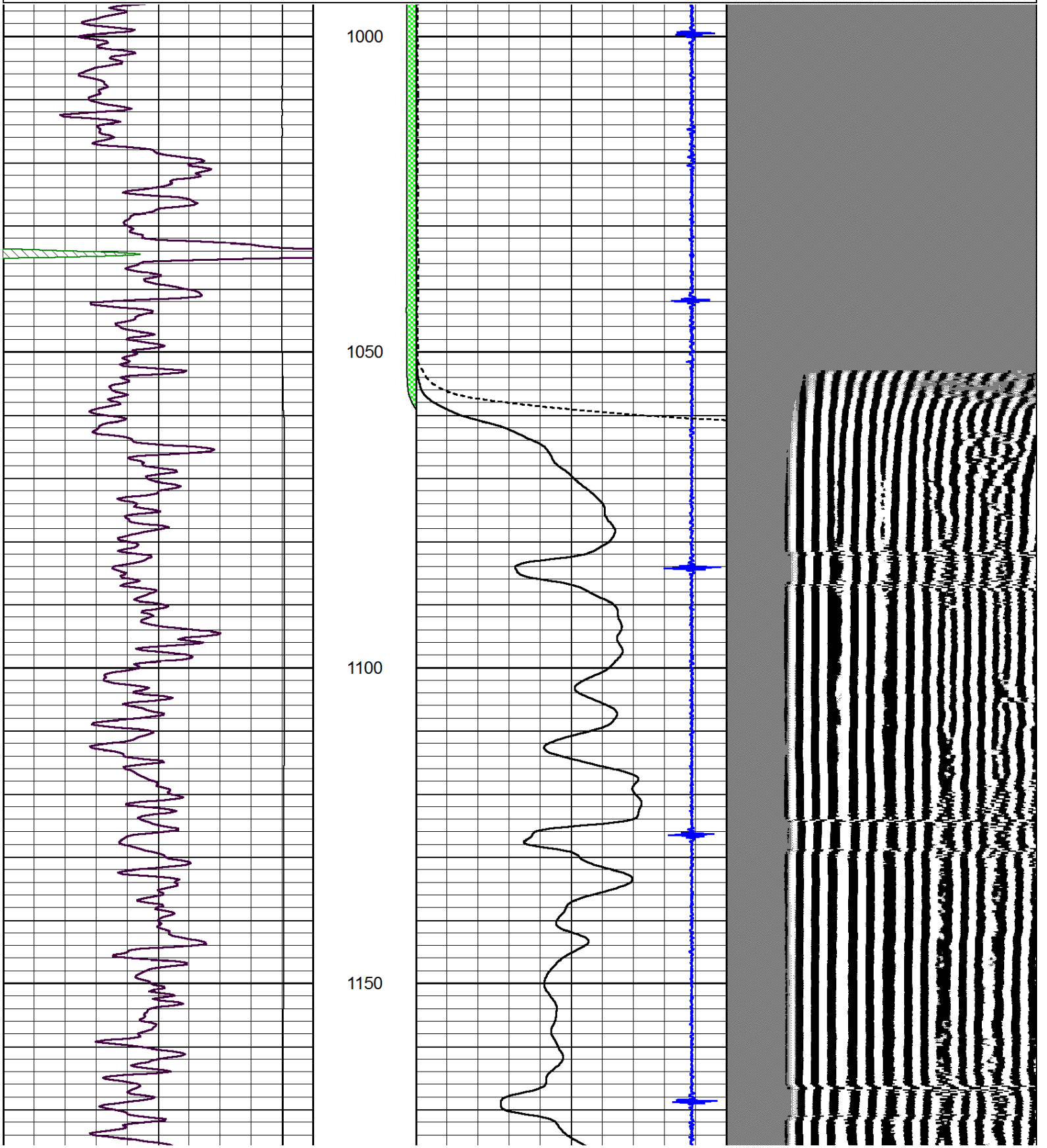
Hays, KS., North to Buckeye Road, 3 East to 180 Rd., 3 North, .5 East  
.75 North Into.

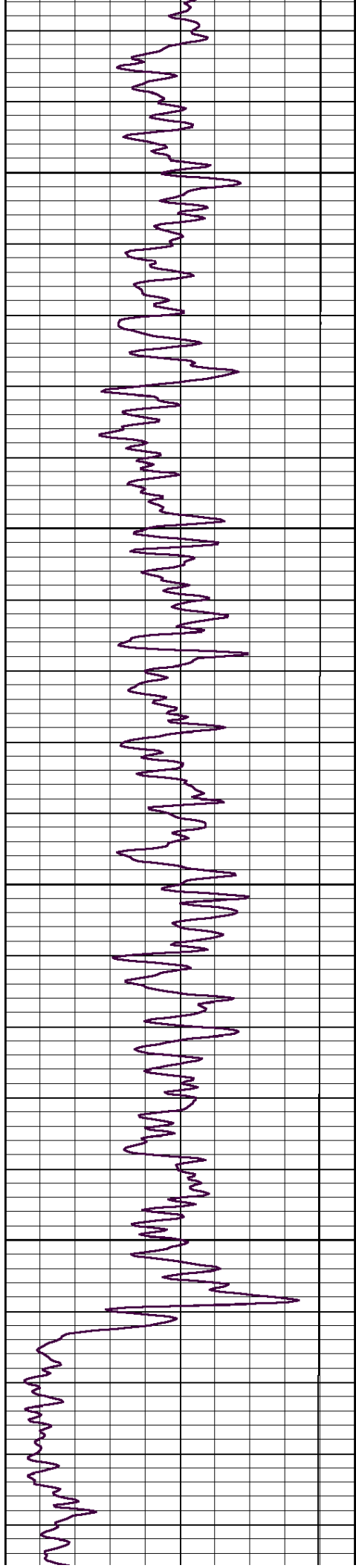


Main Pass

Database File: eb\_marshalla43wd.db  
Dataset Pathname: MarshallA/sgrcbl/pass3.3  
Presentation Format: cbldr  
Dataset Creation: Wed Jan 02 12:07:17 2013  
Charted by: Depth in Feet scaled 1:240

0	Gamma Ray	150	amp3ft	8	Casing Collars	-1	200	wvf5ft	1200
			(mV)	0	Amplified Amplitude (mV)	100			
			-100 10	0	Pipe Amplitude (mV)	20			



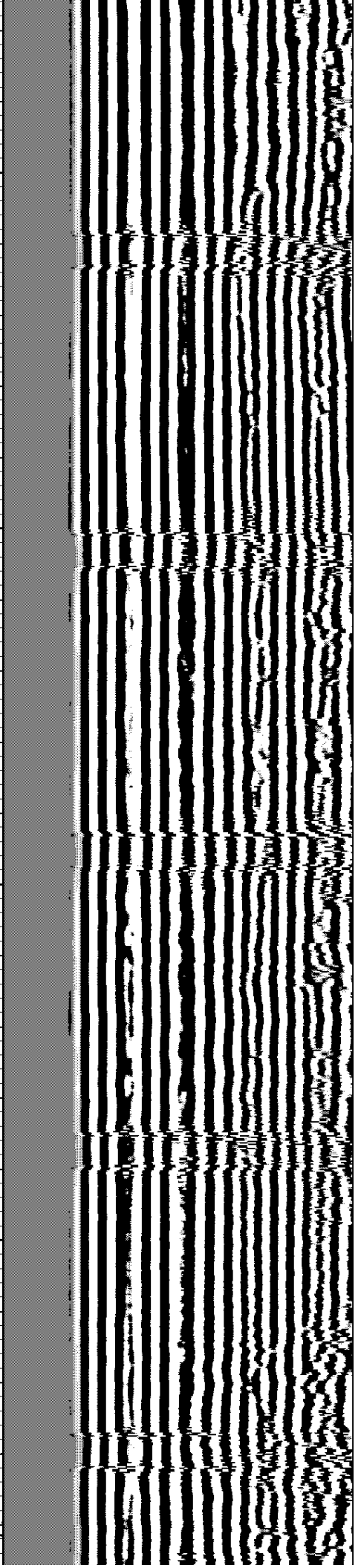
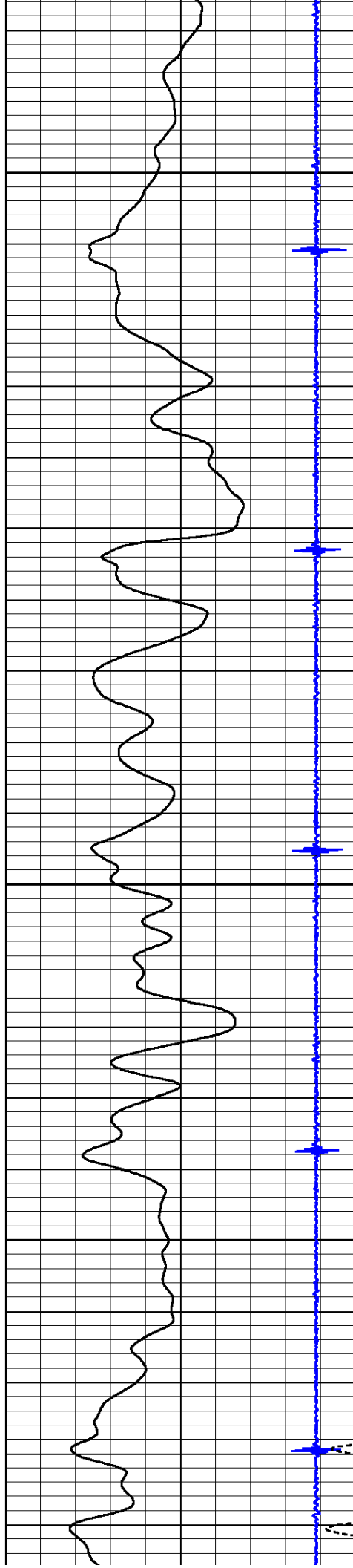


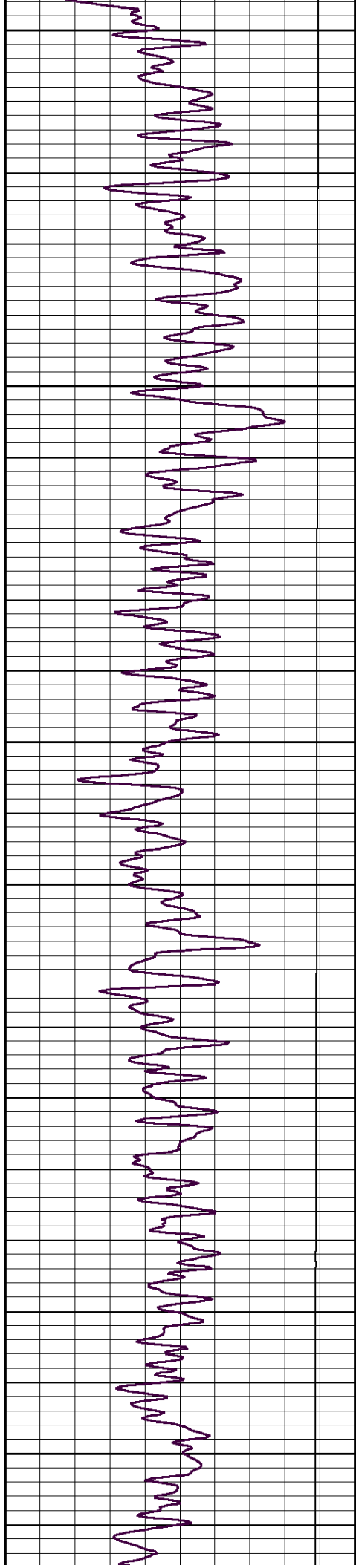
1200

1250

1300

1350





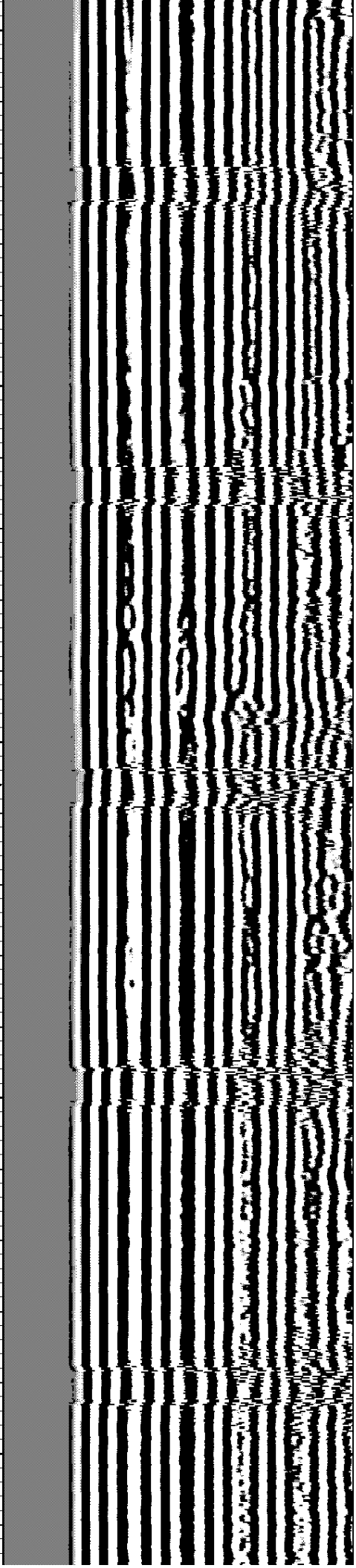
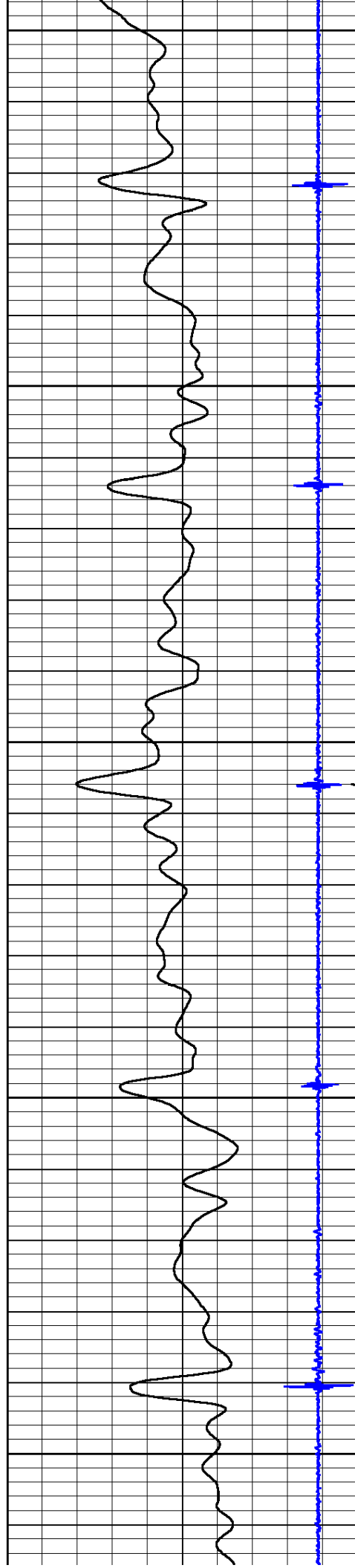
1400

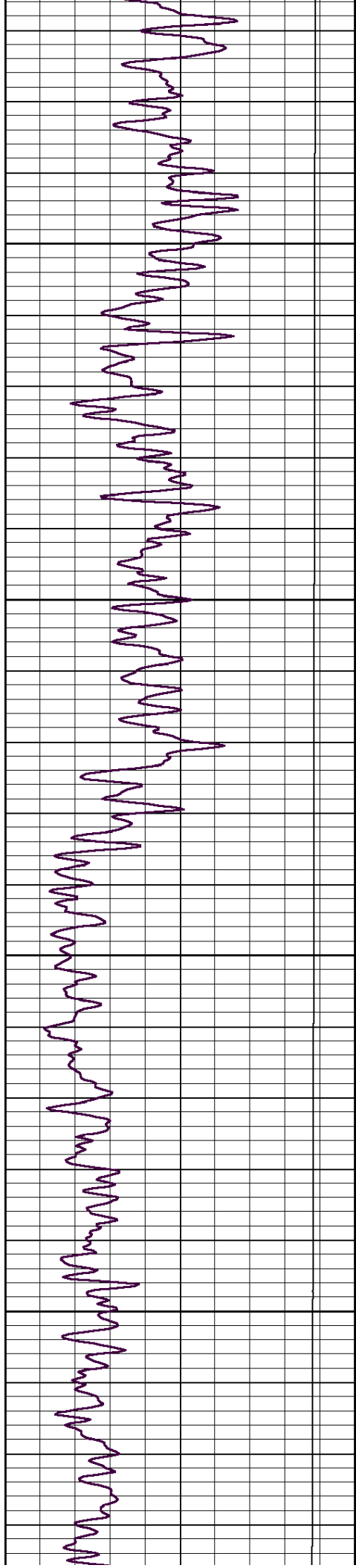
1450

1500

1550

1600



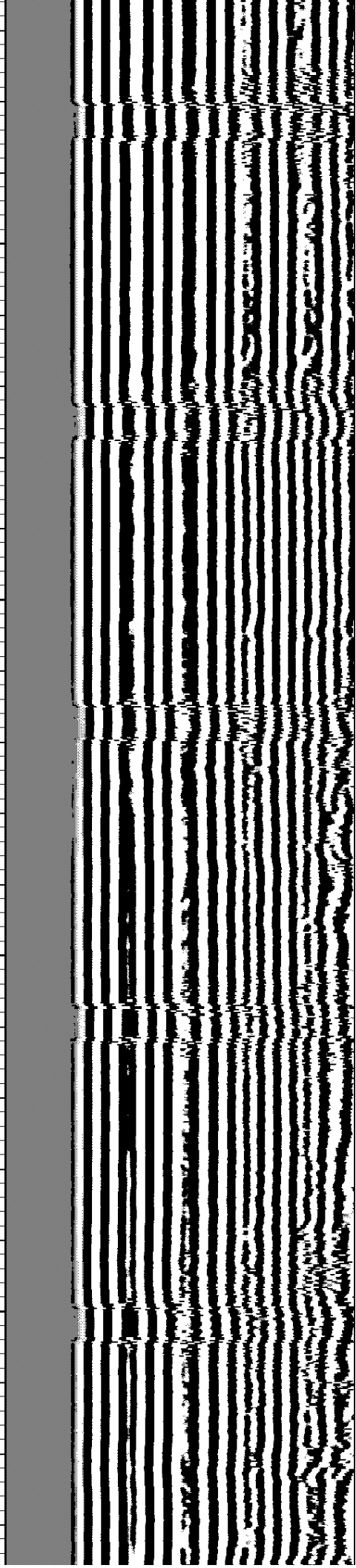
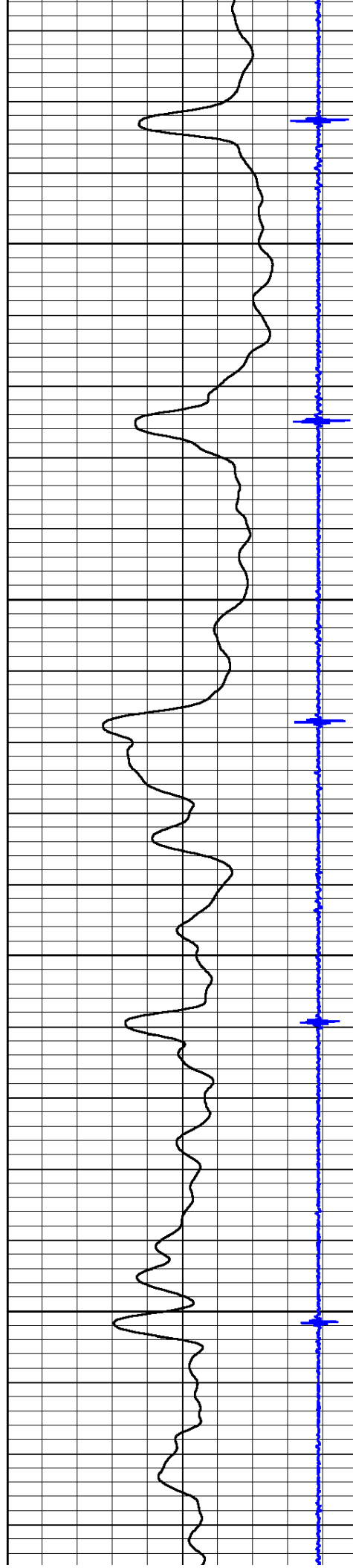


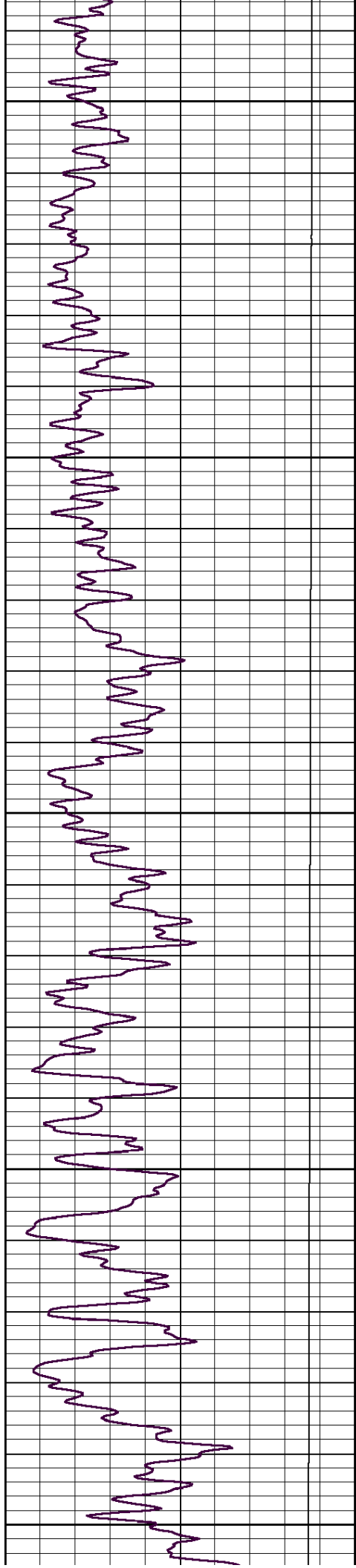
1650

1700

1750

1800





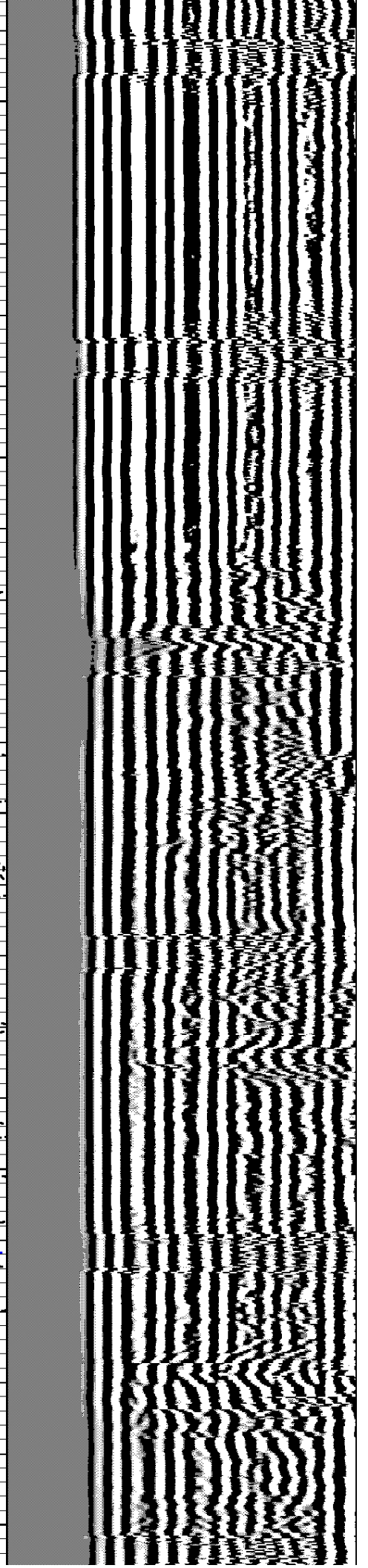
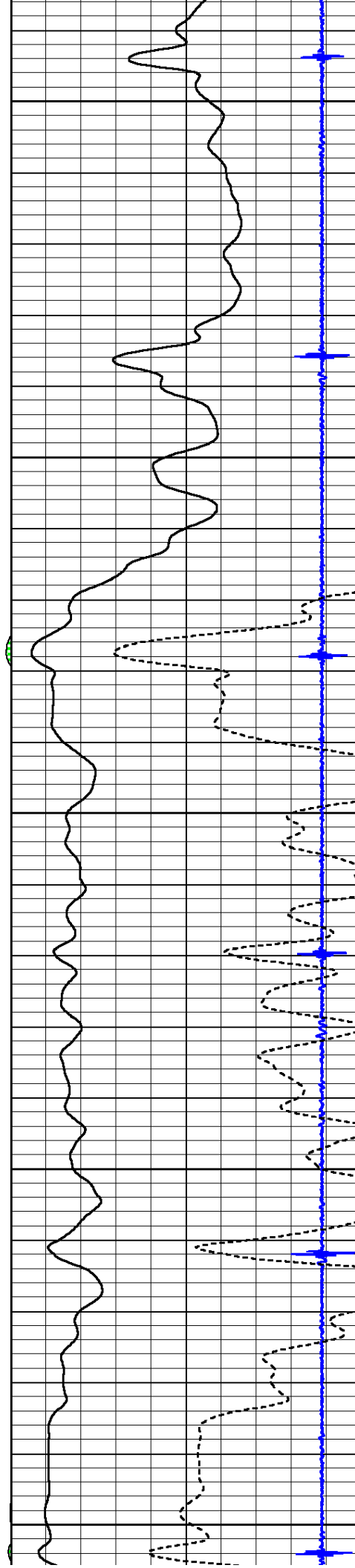
1850

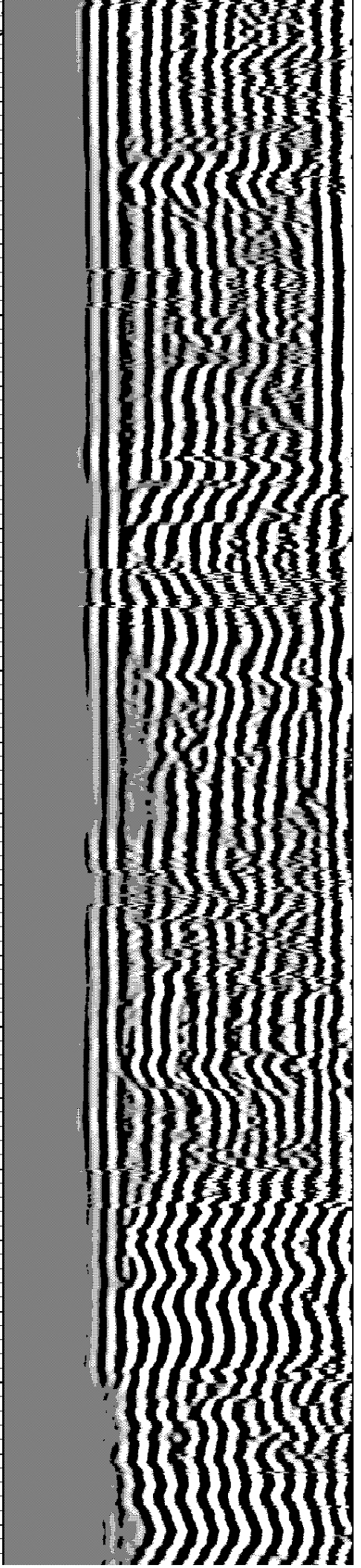
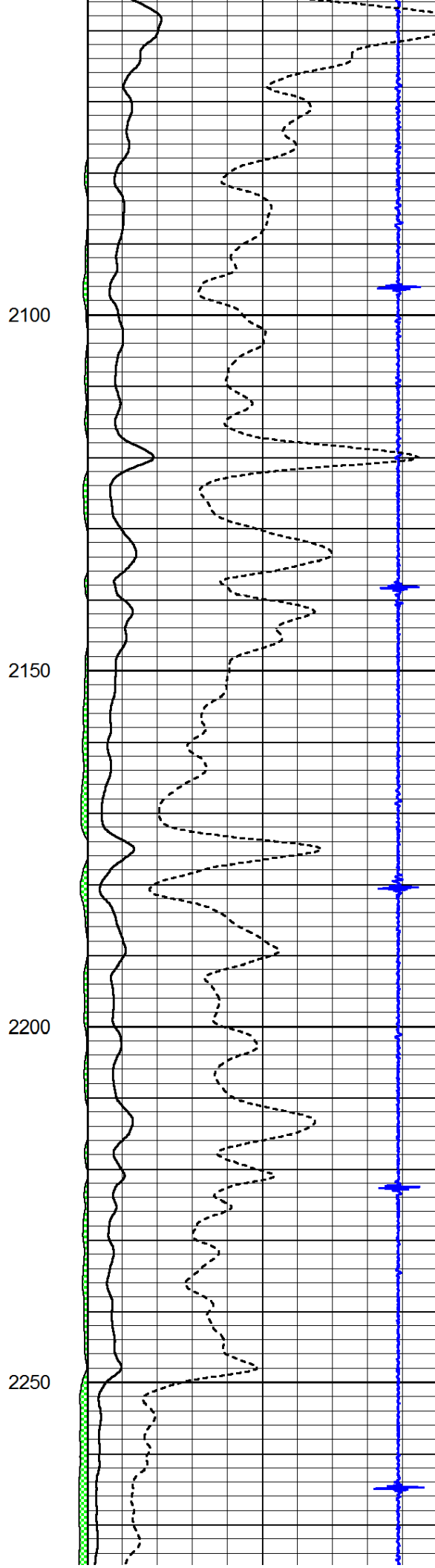
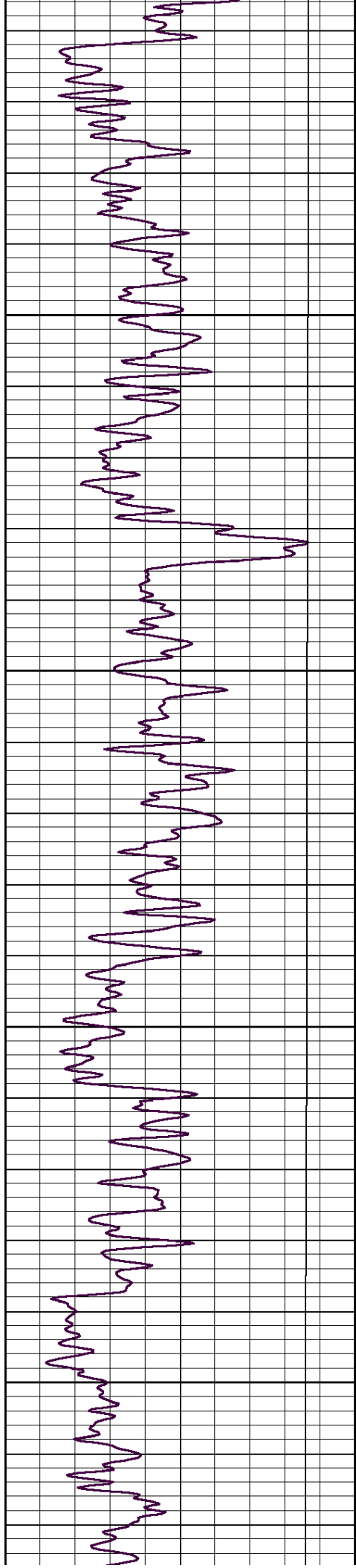
1900

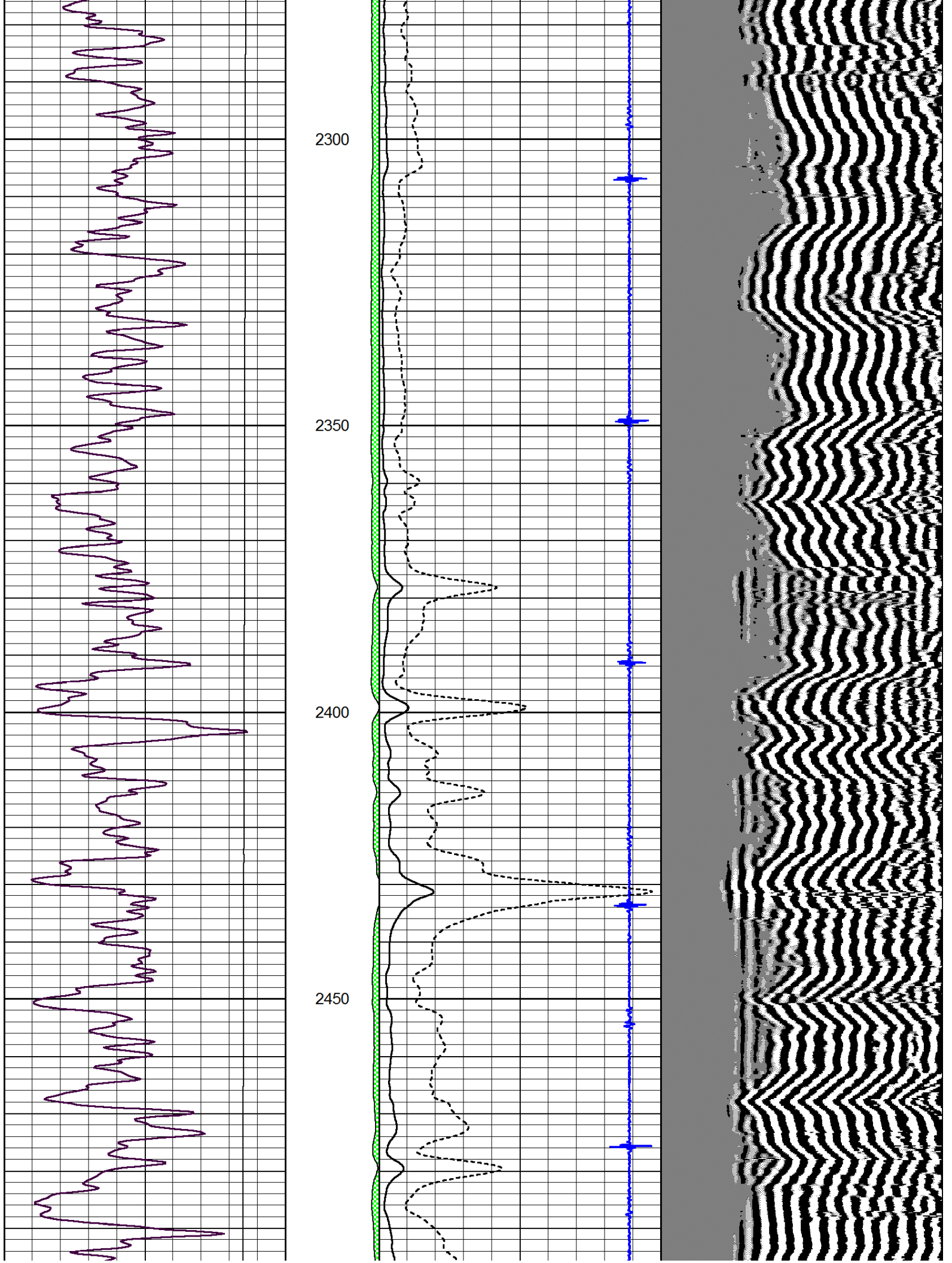
1950

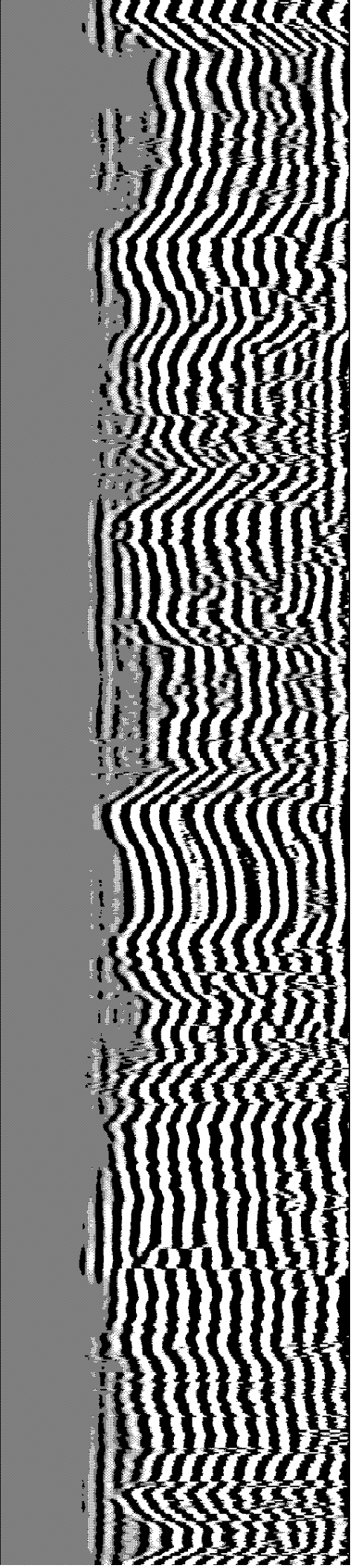
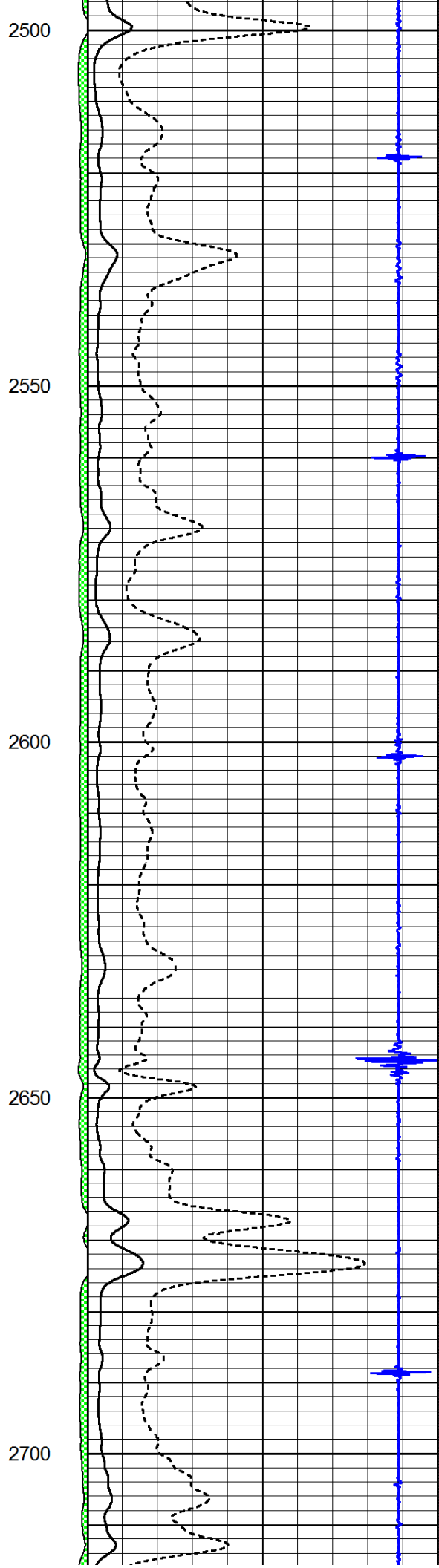
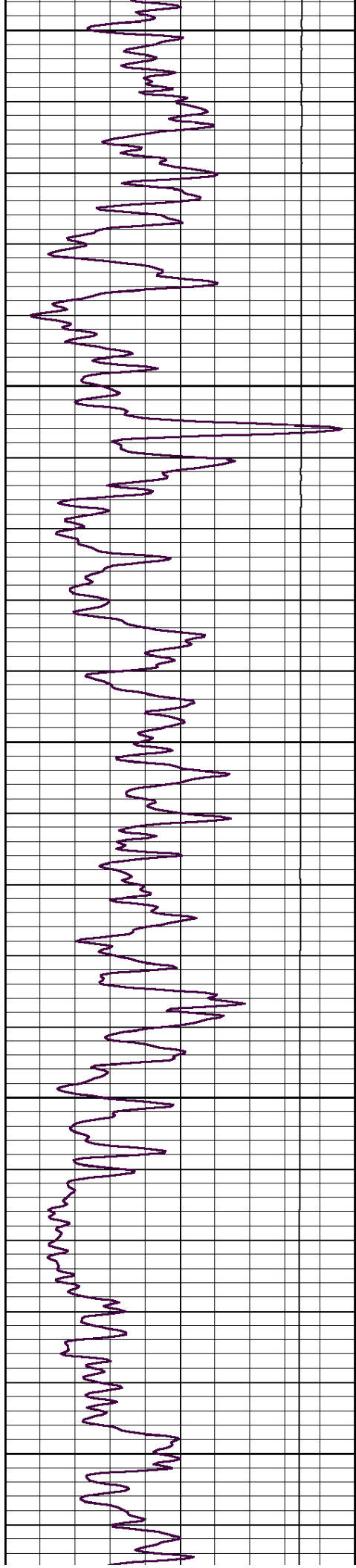
2000

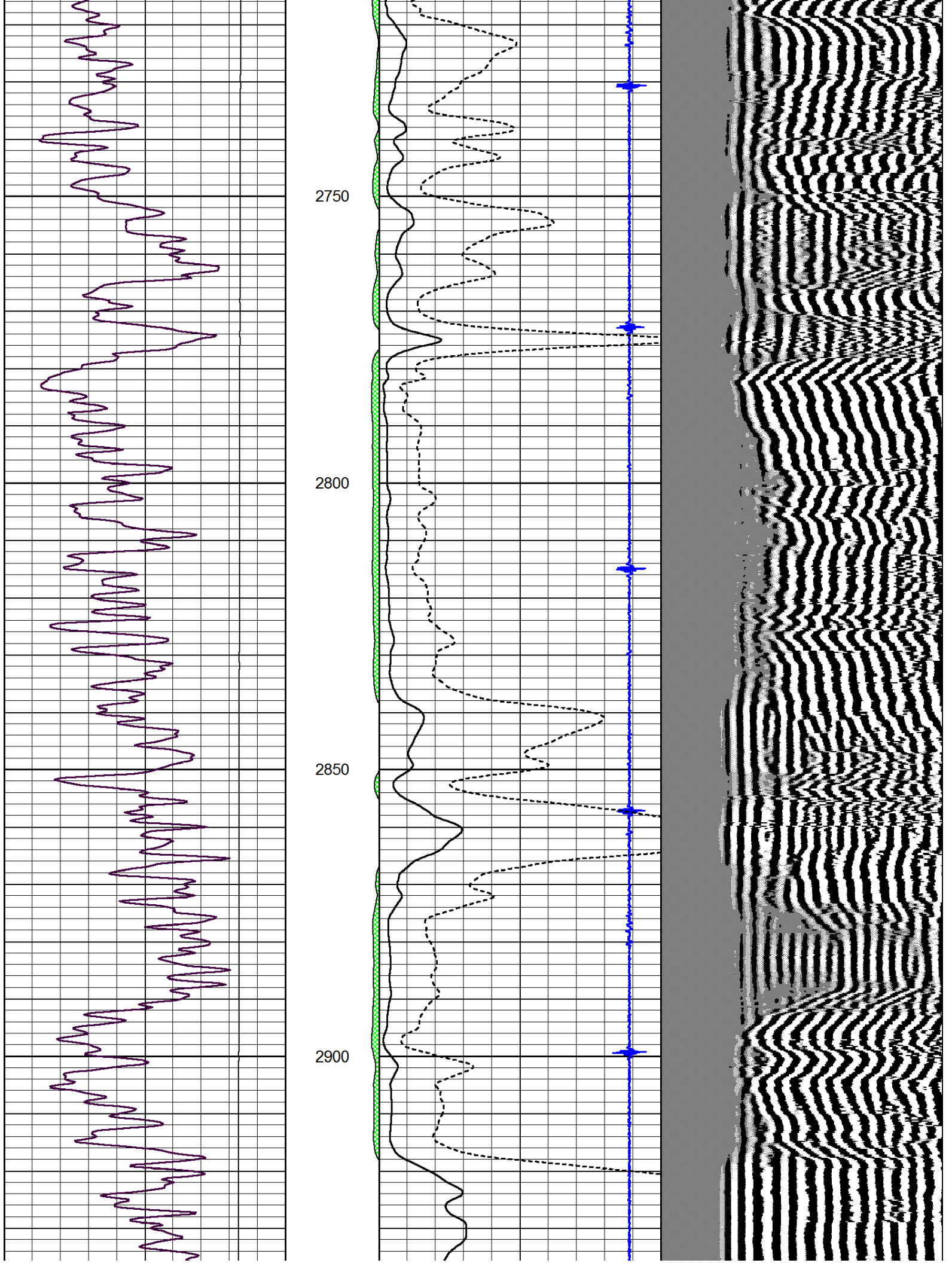
2050

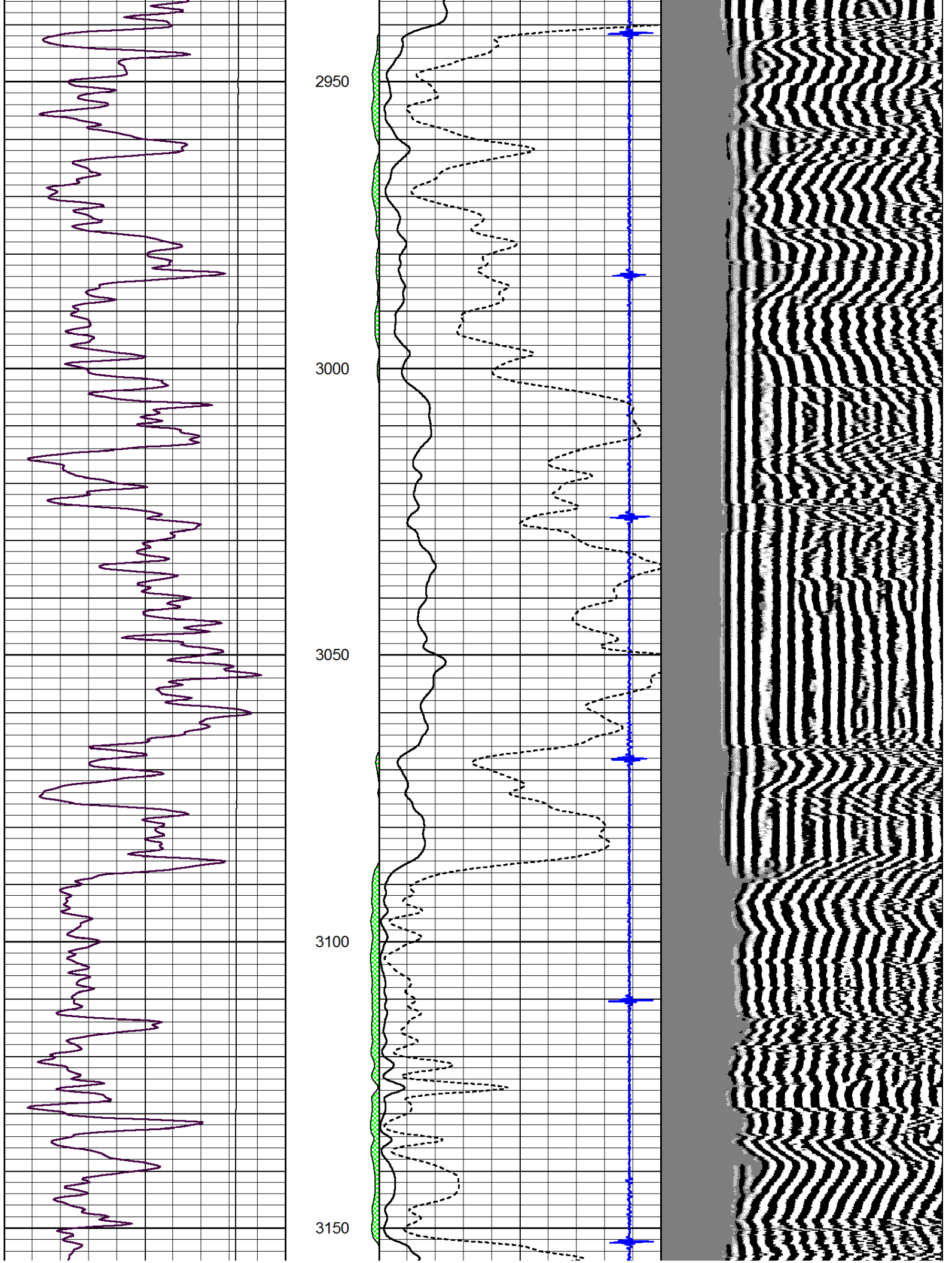


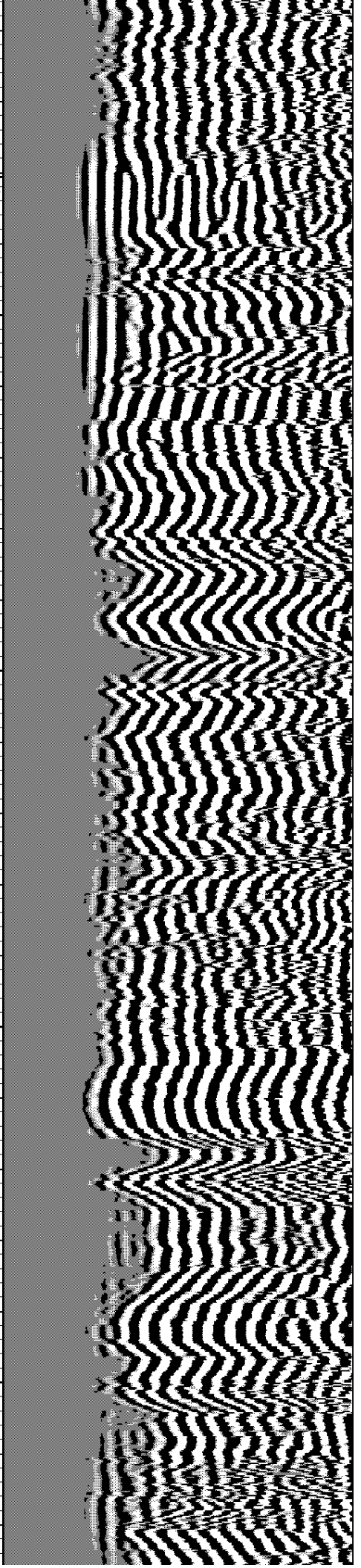
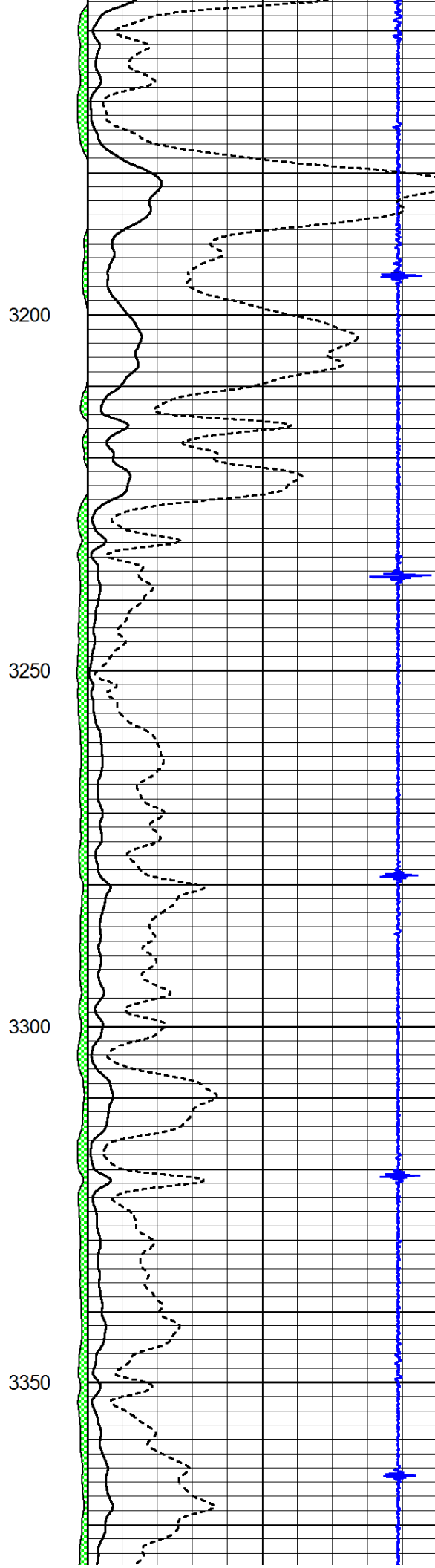
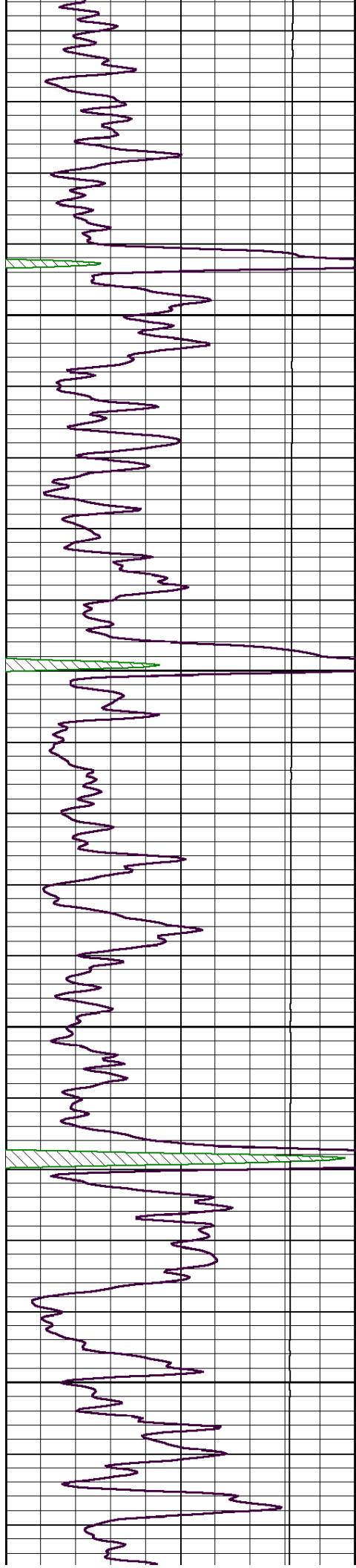


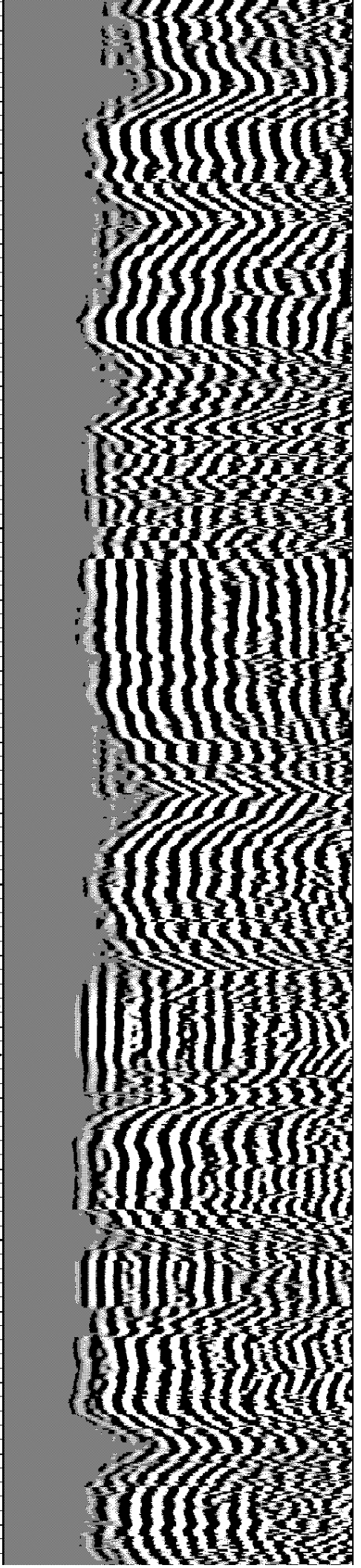
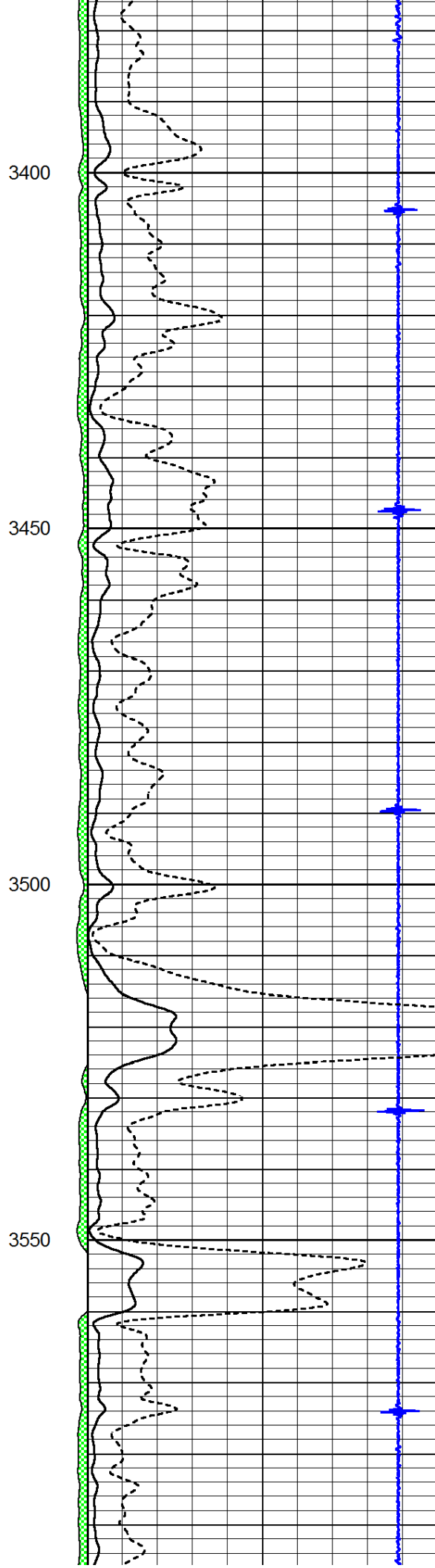
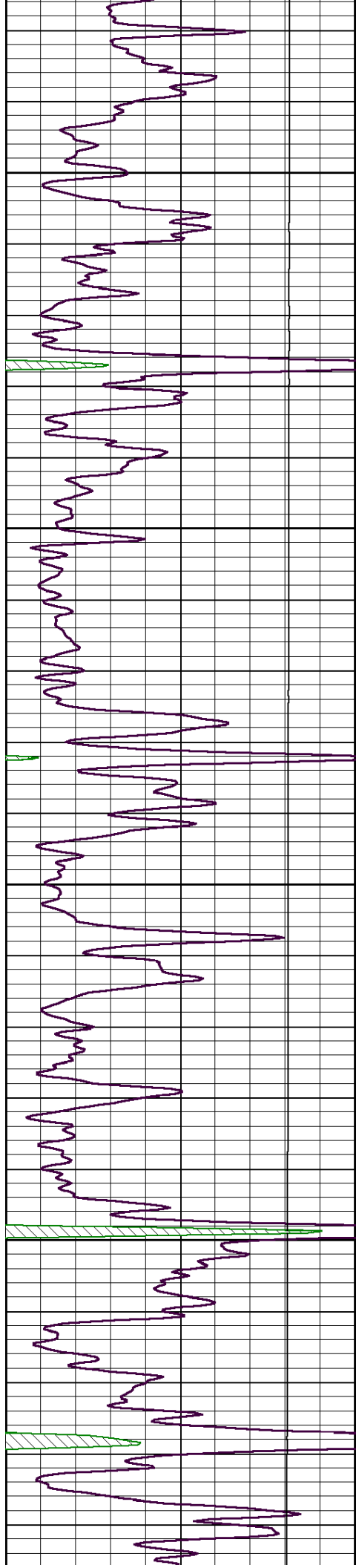


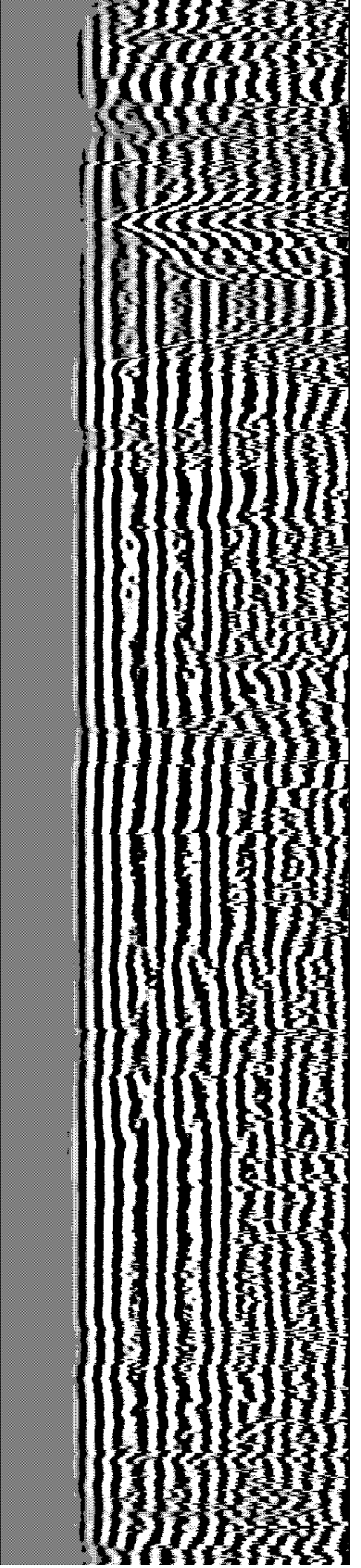
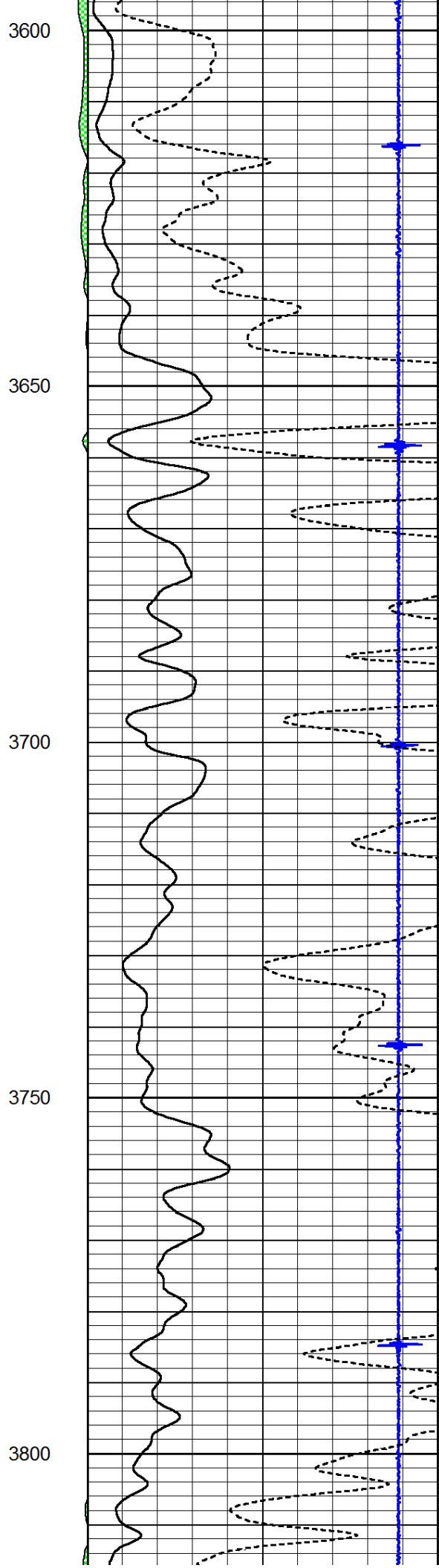
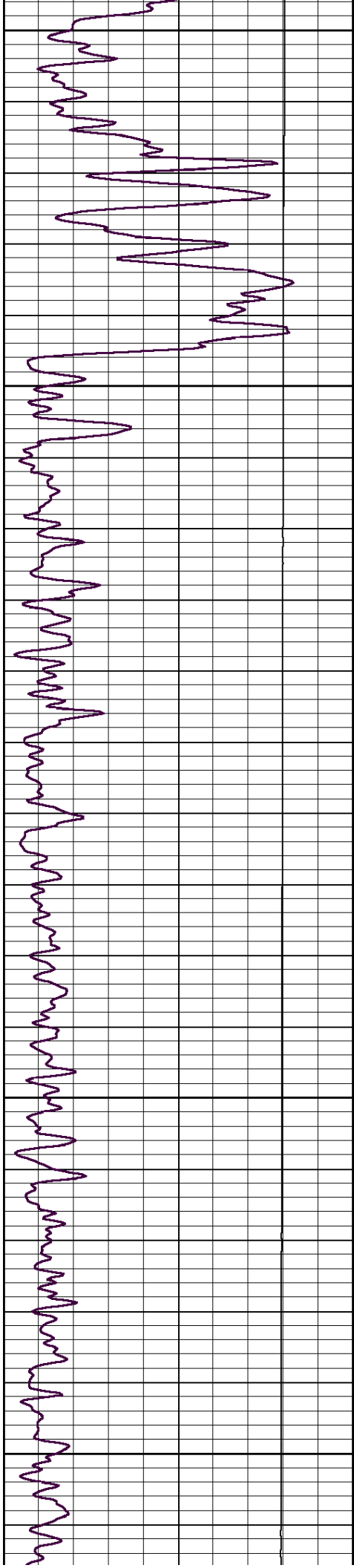


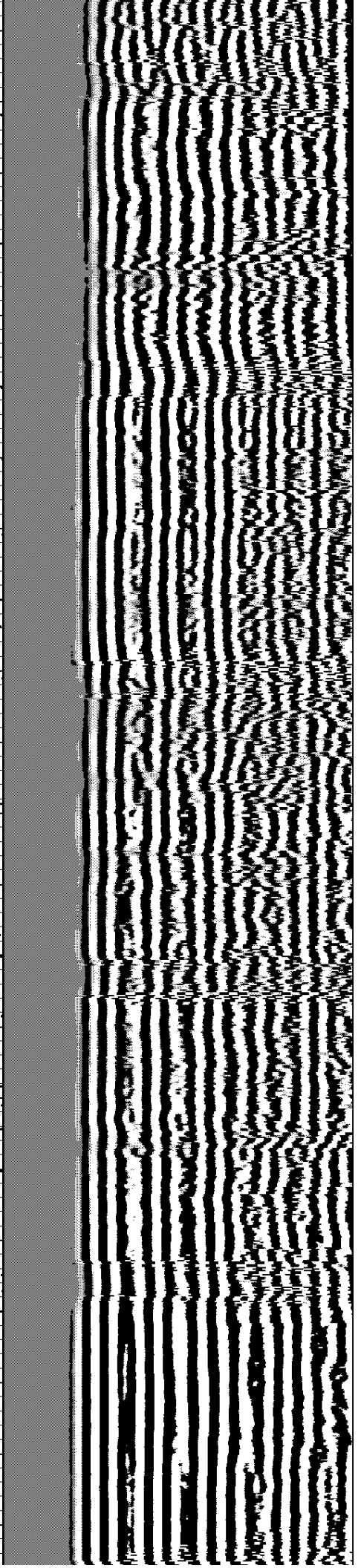
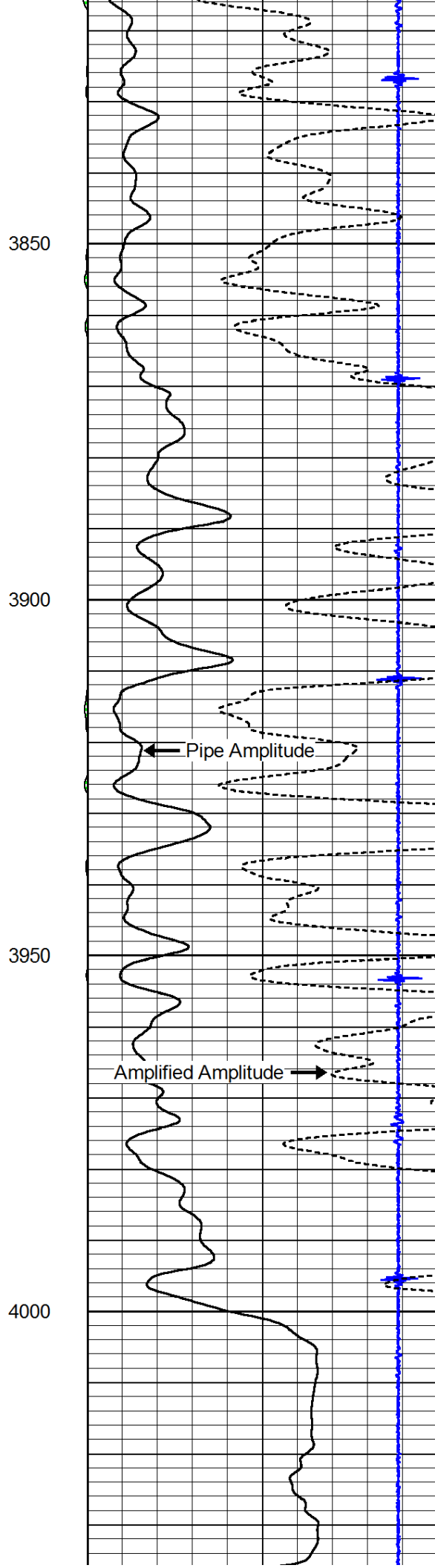
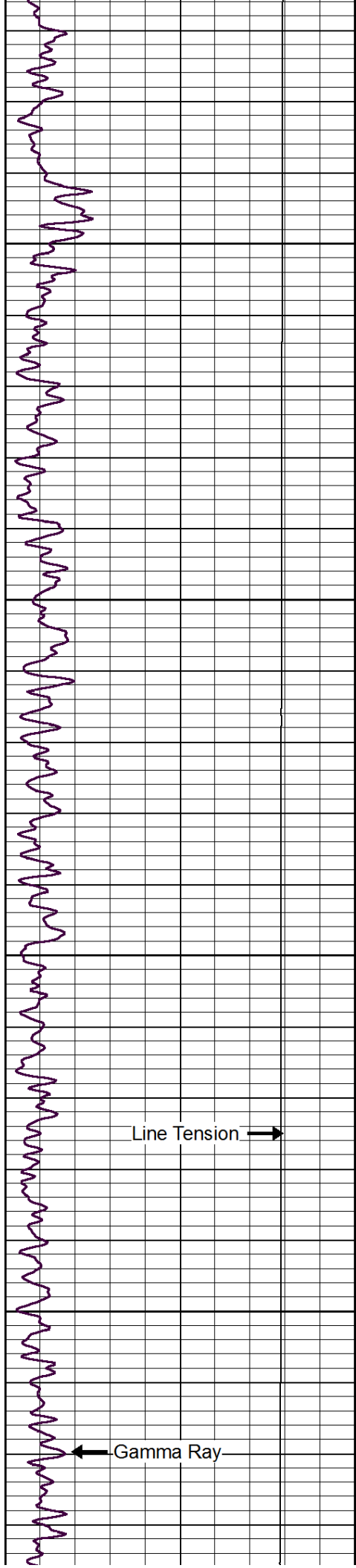


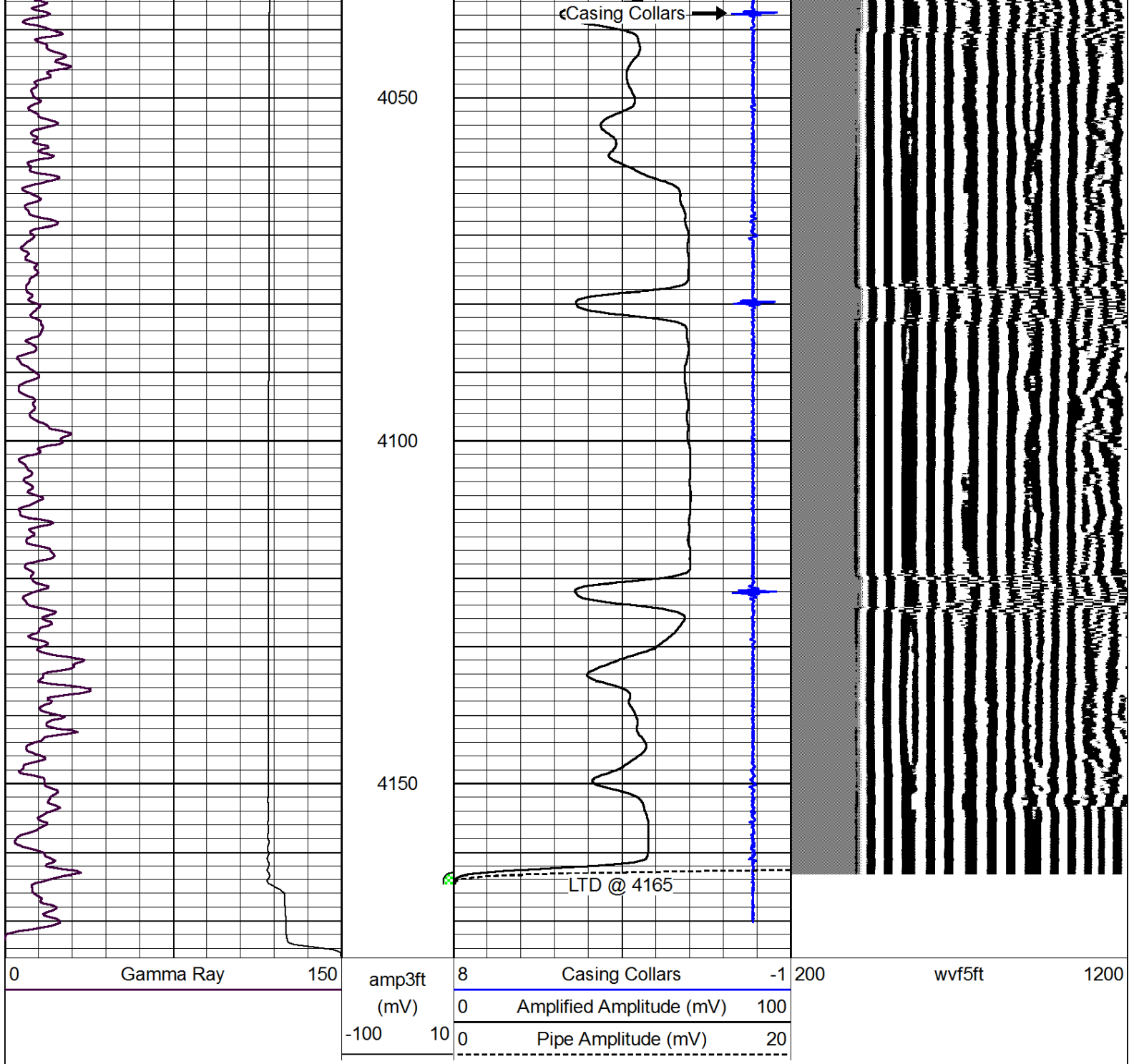












Pioneer Energy Services

# Repeat Section

Database File: eb\_marshalla43wd.db  
 Dataset Pathname: MarshallA/sgrcbI/pass2  
 Presentation Format: cblcr  
 Dataset Creation: Wed Jan 02 11:06:27 2013 by Log SCH 111116  
 Charted by: Depth in Feet scaled 1:240

