



SUPERIOR
Hays,
Kansas

MICRO
LOG

Company PHILLIPS EXPLORATION CO., L.C.
Well FLAX #1-7
Field WILDCAT
County TREGO
State KANSAS

Company PHILLIPS EXPLORATION COMPANY, L.C.
Well FLAX #1-7
Field WILDCAT
County TREGO State KANSAS

Location: API # : 15-195-22799-0000
1400' FSL & 2090' FEL
SE - SW - NW - SE
SEC 7 TWP 11S RGE 23W
Permanent Datum GROUND LEVEL Elevation 2272
Log Measured From KELLY BUSHING 5' A.G.L.
Drilling Measured From KELLY BUSHING
Other Services
CDL/CNL
DIL
Elevation
K.B. 2277
D.F. 2275
G.L. 2272

Date	8/9/12		
Run Number	TWO		
Depth Driller	3950		
Depth Logger	3951		
Bottom Logged Interval	3949		
Top Log Interval	3200		
Casing Driller	8 5/8"@217'		
Casing Logger	217		
Bit Size	7 7/8"		
Type Fluid in Hole	CHEMICAL MUD	CHLORIDES 1,300 PPM	
Density / Viscosity	9.2/54		
pH / Fluid Loss	10.5/6.8		
Source of Sample	FLOWLINE		
Rin @ Meas. Temp	2.80@92F		
Rmf @ Meas. Temp	2.10@92F		
Rmc @ Meas. Temp	3.36@92F		
Source of Rmf / Rmc	MEASUREMENT		
Rin @ BHT	2.22@116F		
Time Circulation Stopped	3.5 HOURS		
Time Logger on Bottom	5:00 A.M.		
Maximum Recorded Temperature	116F		
Equipment Number	0836		
Location	HAYS, KANSAS		
Recorded By	JEFF LUEBBERS		
Witnessed By	JIM PHILLIPS		

<<< Fold Here >>>

All interpretations are opinions based on inferences from electrical or other measurements and we cannot and do not guarantee the accuracy or correctness of any interpretation, and we shall not, except in the case of gross or willful negligence on our part, be liable or responsible for any loss, costs, damages, or expenses incurred or sustained by anyone resulting from any interpretation made by any of our officers, agents or employees. These interpretations are also subject to our general terms and conditions set out in our current Price Schedule.

Comments

THANK YOU FOR USING SUPERIOR WELL SERVICE HAYS, KANSAS (785) 628-6395
DIRECTIONS
WAKEENY, KS. 8N. ON HWY 283 TO "RD. B", 2W. TO "RD. 240", 1S., W. INTO

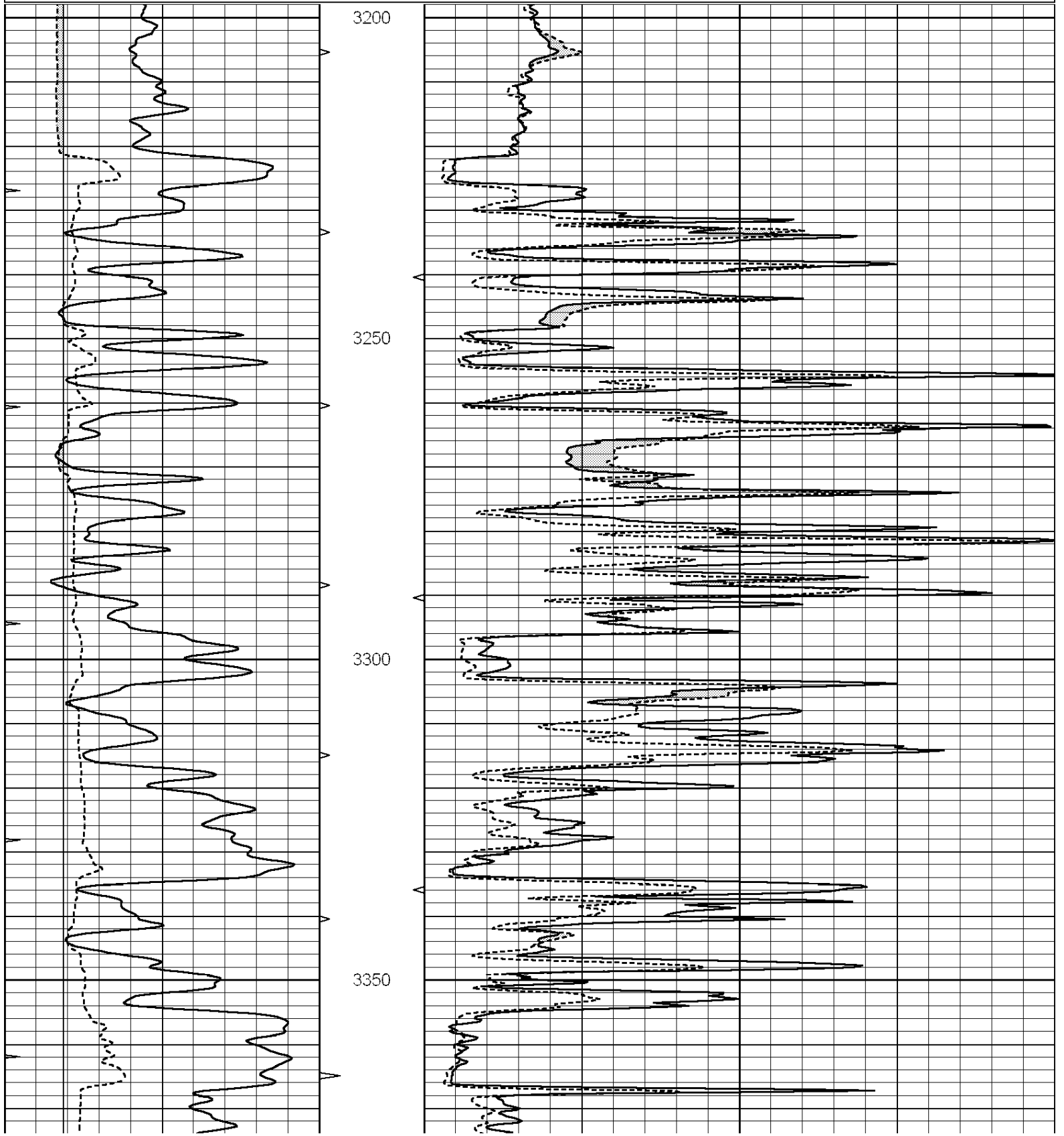


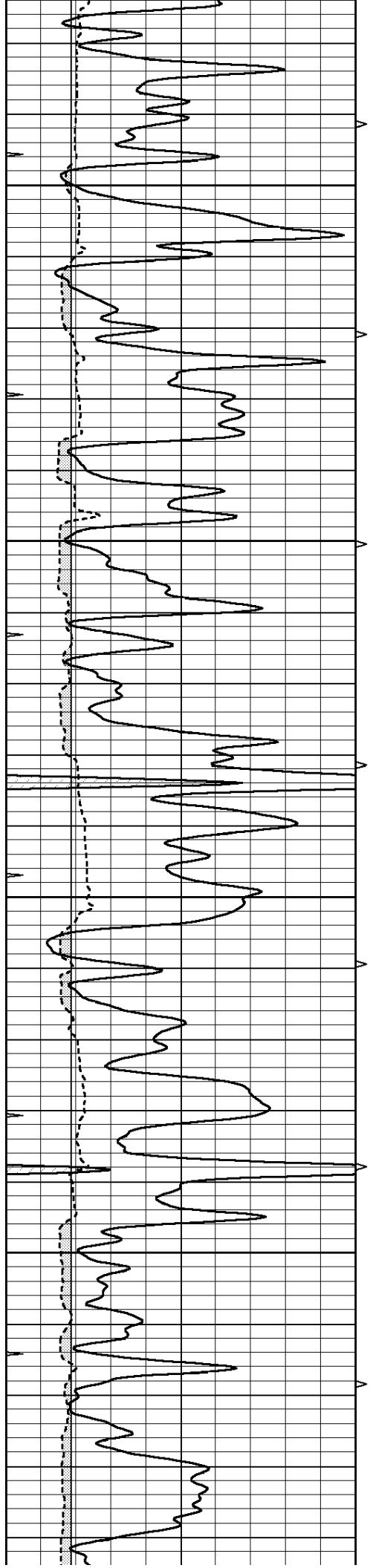
SUPERIOR
Hays,
Kansas

MAIN SECTION

Database File: 407997ddn.db
 Dataset Pathname: pass6.4
 Presentation Format: micro
 Dataset Creation: Thu Aug 09 08:14:48 2012 by Calc Open-Cased 090629
 Charted by: Depth in Feet scaled 1:240

0	GAMMA RAY (GAPI)	150	ABHV	0	MEL1.5 (Ohm-m)	40
6	CALIPER (in)	16	10 (ft3)	0	MEL2.0 (Ohm-m)	40
0	MINMK	20	TBHV			
			0 (ft3)	10		



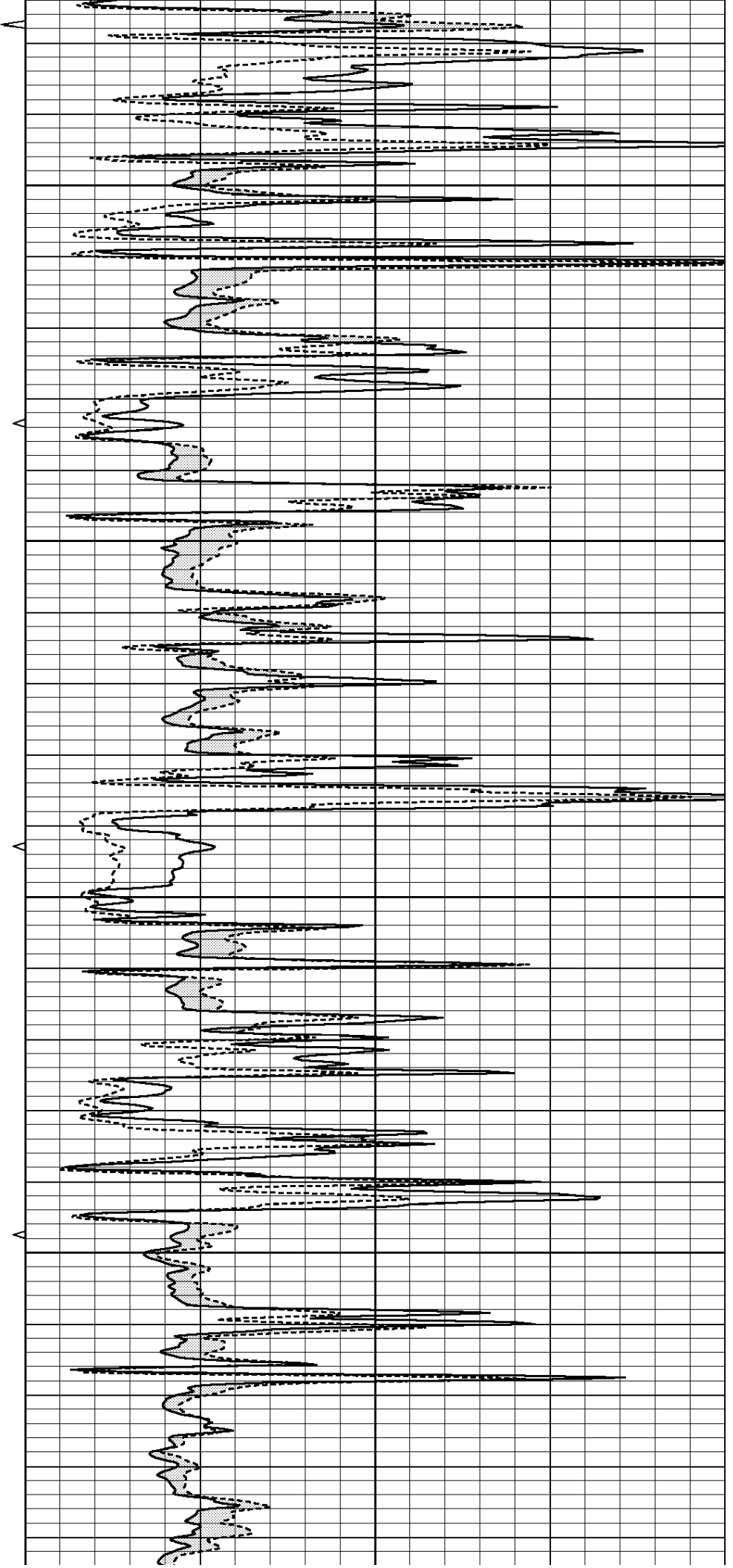


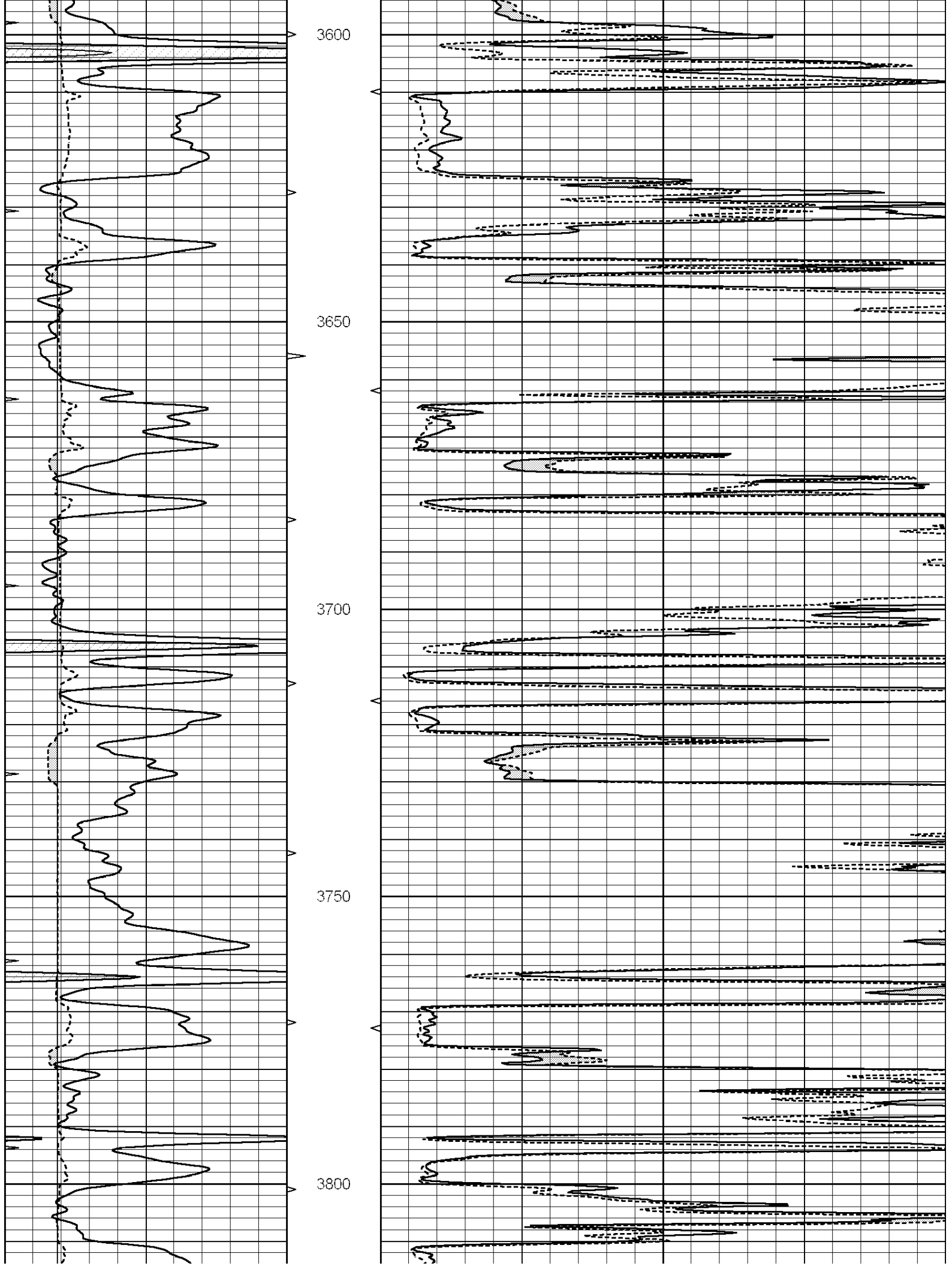
3400

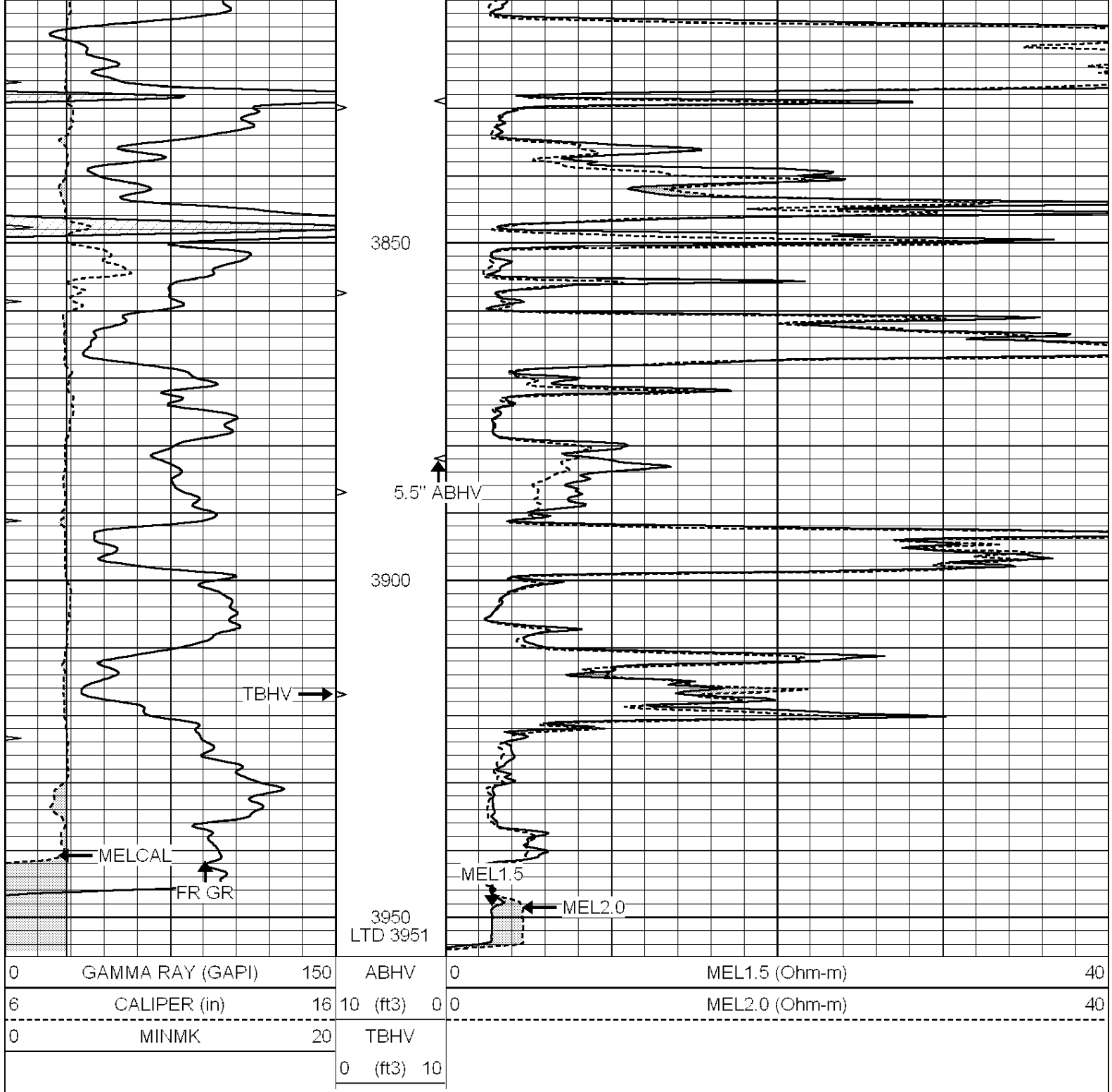
3450

3500

3550







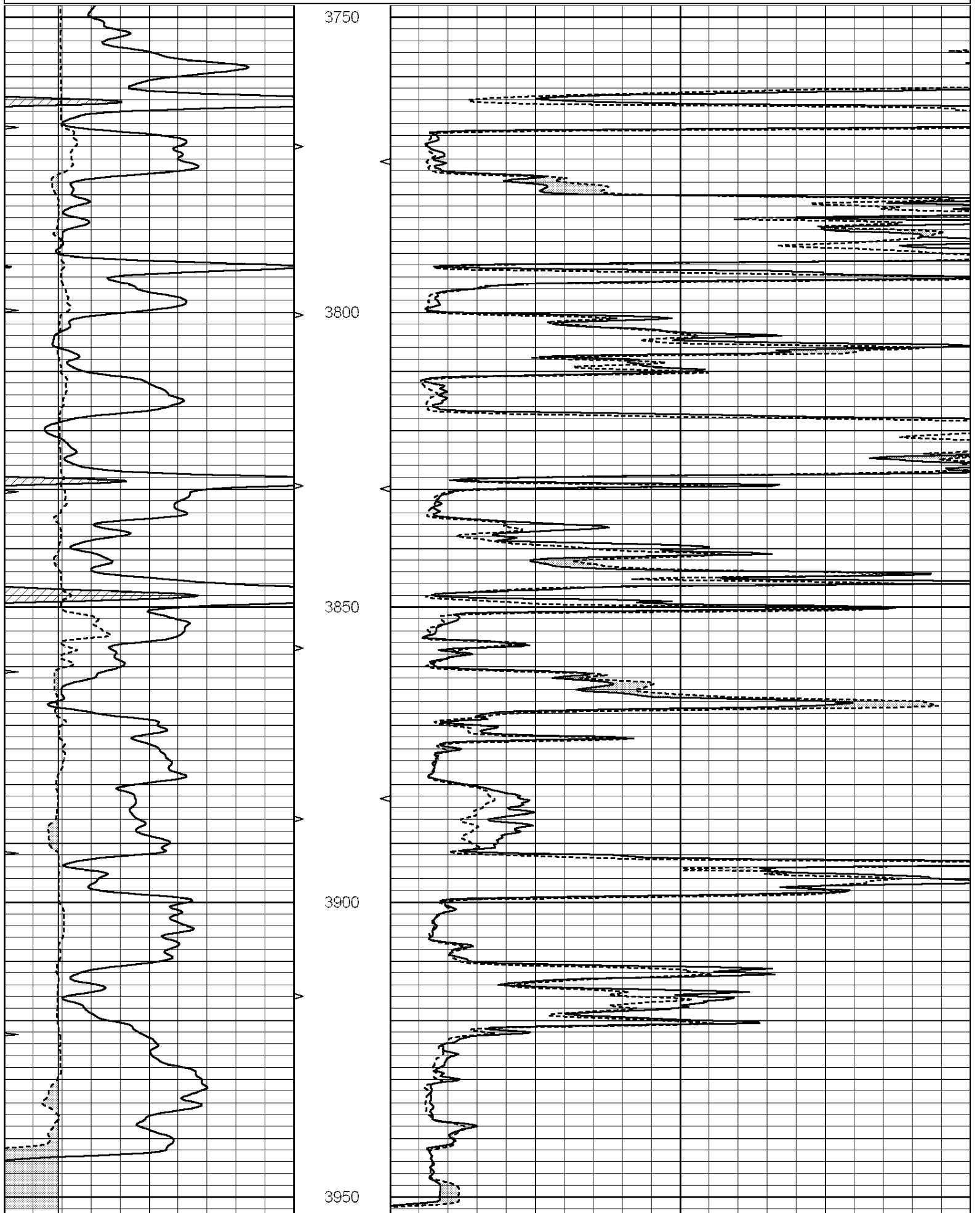
SUPERIOR
Hays,
Kansas

REPEAT SECTION

Database File: 407997ddn.db
 Dataset Pathname: pass5.4
 Presentation Format: micro
 Dataset Creation: Thu Aug 09 07:06:11 2012 by Calc Open-Cased 090629
 Charted by: Depth in Feet scaled 1:240

0	GAMMA RAY (GAPI)	150	ABHV	0	MEL1.5 (Ohm-m)	40
6	CALIPER (in)	16	10 (ft3)	0 0	MEL2.0 (Ohm-m)	40
0	MINMK	20	TBHV			

0 (ft) 10



0 GAMMA RAY (GAPI) 150 ABHV 0 MEL1.5 (Ohm-m) 40

6 CALIBER (in) 16.10 (#3) 0.0 MEL2.0 (Ohm-m) 40

0	CALIPER (in)	10	10 (ft3)	0.0	MILLER (CINNAM)	40
0	MINMK	20	TBHV			
			0 (ft3)	10		

Calibration Report

Database File: 407997ddn.db
 Dataset Pathname: pass6.4
 Dataset Creation: Thu Aug 09 08:14:48 2012 by Calc Open-Cased 090629

MICRO Calibration Report

Serial Number: MICRO6
 Tool Model: PROBE
 Performed: Thu Aug 09 06:41:40 2012

Caliper Calibration: Gain=5.885 Offset=-1.328

	Low Cal	High Cal
References	7.000	14.000
Readings	1.296	2.486

1.5" Calibration: Gain=30.075 Offset=-0.200

	Low Cal	High Cal
References	0.000	20.000
Readings	0.004	1.196

2" Calibration: Gain=33.000 Offset=-0.200

	Low Cal	High Cal
References	0.000	20.000
Readings	0.006	0.913

Gamma Ray Calibration Report

Serial Number: GR6
 Tool Model: OPEN
 Performed: Thu Aug 09 06:45:09 2012

Calibrator Value: 150.0 GAPI

Background Reading:	0.0	cps
Calibrator Reading:	276.0	cps

Sensitivity: 1.0000 GAPI/cps