



**SUPERIOR**  
Hays,  
Kansas

**SONIC**  
LOG

Company OIL PRODUCERS INC OF KANSAS  
Well LOWRY #1-20  
Field BRAY  
County ROOKS State KANSAS

Company OIL PRODUCERS INC OF KANSAS  
Well LOWRY #1-20  
Field BRAY  
County ROOKS  
State KANSAS

Location: API #: 15-163-24058-0000  
780' FSL & 3845' FWL  
SW - NW - SE - SE  
SEC 20 TWP 8S RGE 19W  
Permanent Datum GROUND LEVEL Elevation 1999  
Log Measured From KELLY BUSHING 9' A.G.L.  
Drilling Measured From KELLY BUSHING

Other Services  
CDL/CNL  
DIL/MEL  
Elevation  
K.B. 2008  
D.F. 2006  
G.L. 1999

Date	9/8/12
Run Number	TWO
Depth Driller	3520
Depth Logger	3522
Bottom Logged Interval	3512
Top Log Interval	300
Casing Driller	332
Casing Logger	332
Bit Size	7.875
Type Fluid in Hole	CHEMICAL MUD
Density / Viscosity	9.0 / 54
pH / Fluid Loss	10.5 / 7.8
Source of Sample	FLOWLINE
Rim @ Meas. Temp	0.80 @ 74F
Rmf @ Meas. Temp	0.60 @ 74F
Rmc @ Meas. Temp	0.96 @ 74F
Source of Rmf / Rmc	MEASURED
Rim @ BHT	0.53 @ 112F
Time Circulation Stopped	2 HOURS
Time Logger on Bottom	
Maximum Recorded Temperature	112F
Equipment Number	860
Location	HAYS, KS.
Recorded By	JEFF GRONEWEG
Witnessed By	DOUG DAVIS

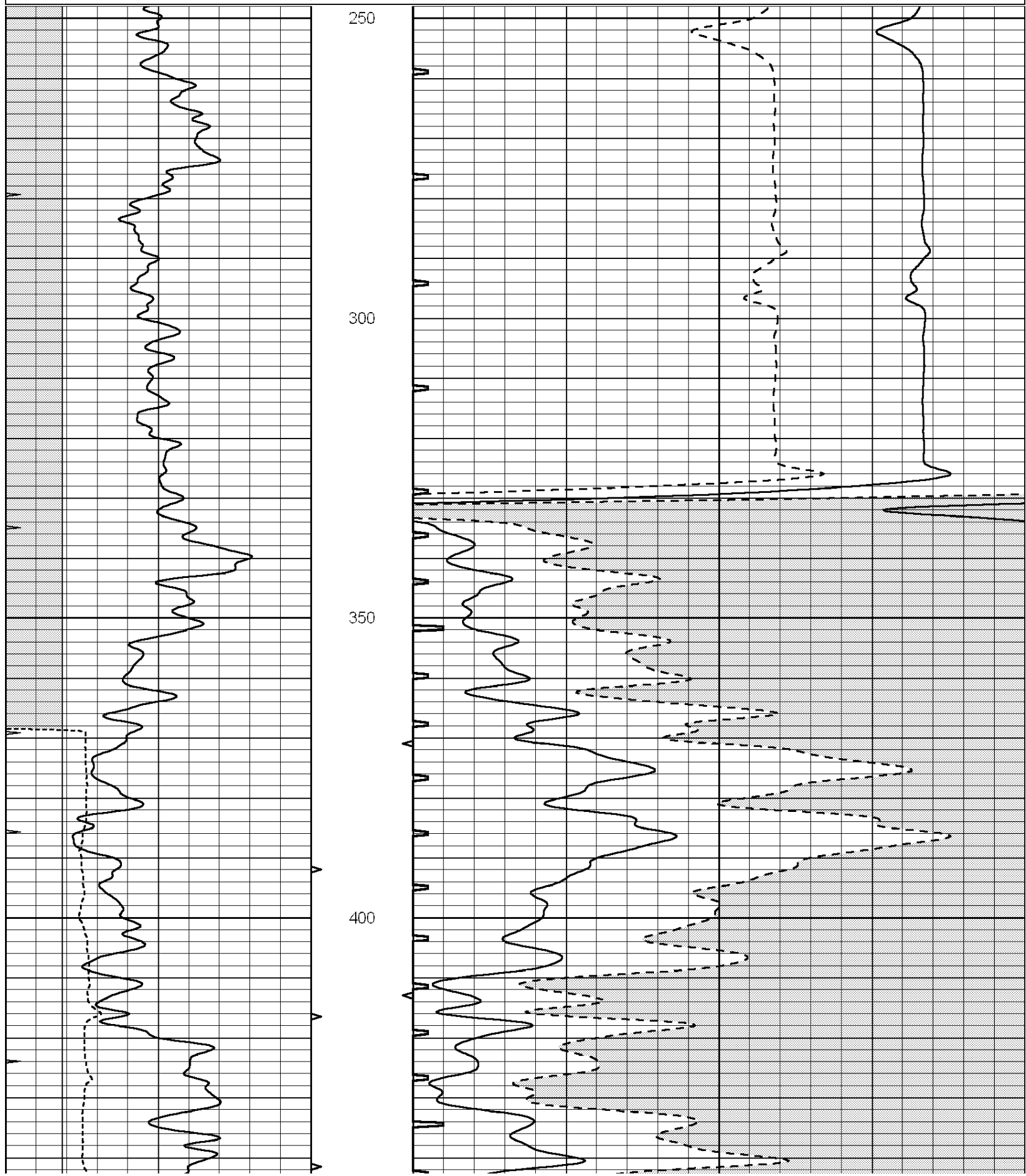
<<< Fold Here >>>

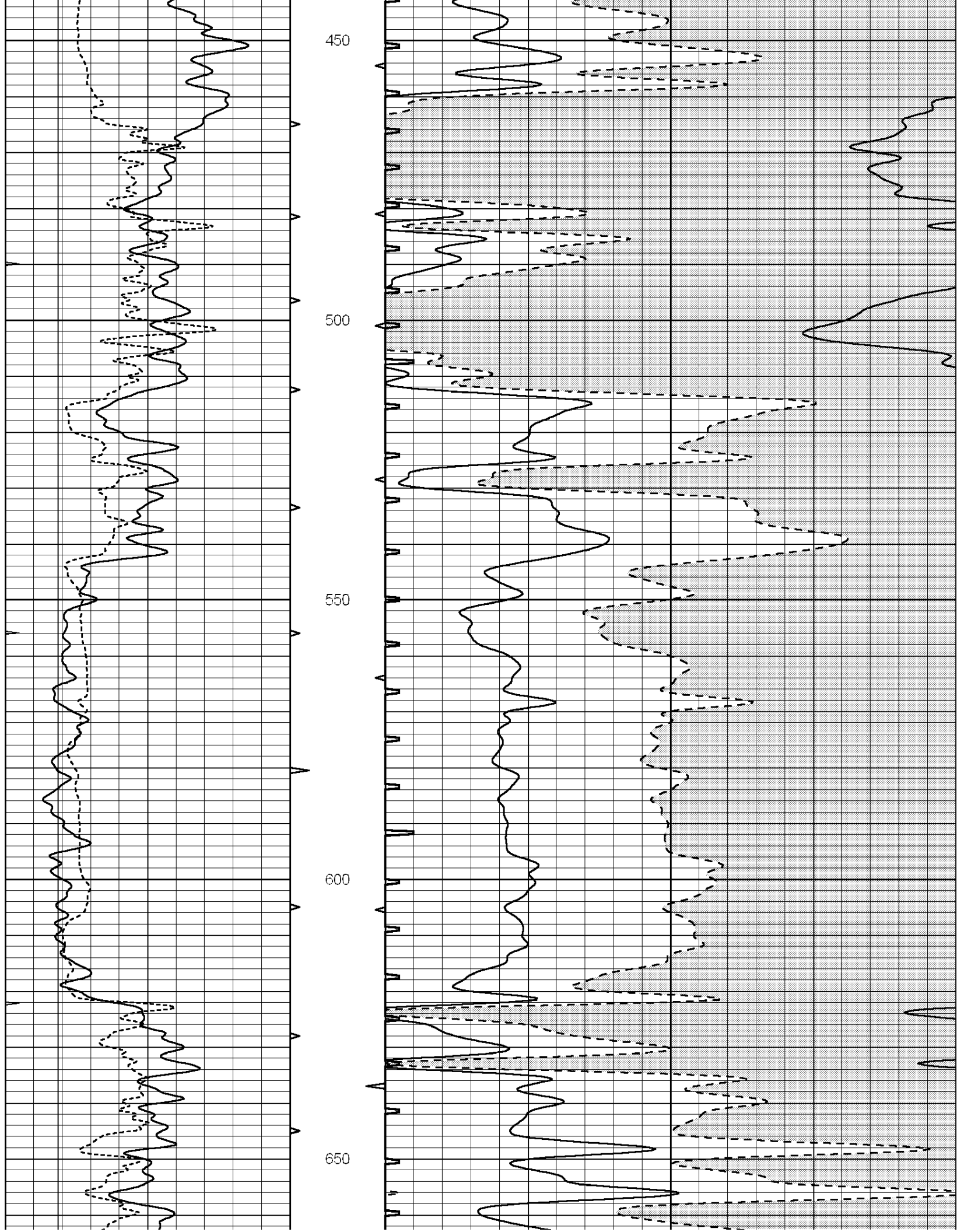
All interpretations are opinions based on inferences from electrical or other measurements and we cannot and do not guarantee the accuracy or correctness of any interpretation, and we shall not, except in the case of gross or willful negligence on our part, be liable or responsible for any loss, costs, damages, or expenses incurred or sustained by anyone resulting from any interpretation made by any of our officers, agents or employees. These interpretations are also subject to our general terms and conditions set out in our current Price Schedule.

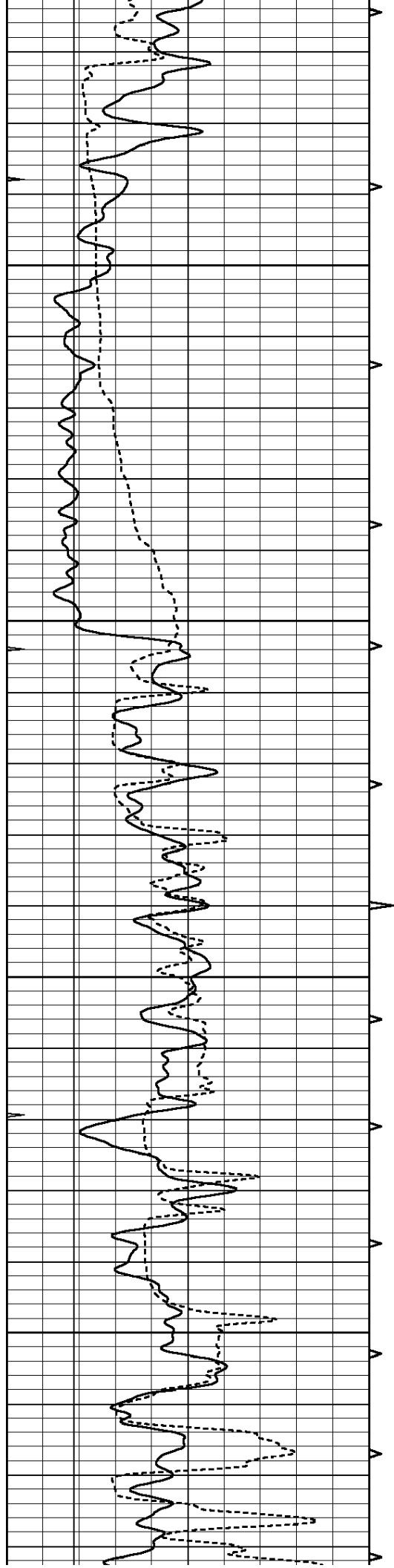
Comments

**THANK YOU FOR USING SUPERIOR WELL SERVICES**  
**785-628-6395**  
**ZURICH, KS - 7 MILES NORTH TO RD Q - 1 3/4 MILES WEST - NORTH INTO**

0	GAMMA RAY (GAPI)	150	ABHV	140	DELTA TIME (usec/ft)	40
6	MELCAL (in)	16	10 (ft3)	0 30	SONIC POROSITY (pu)	-10
0	MINMK	20	TBHV	0	ITT (msec)	20
			0 (ft3)	10		





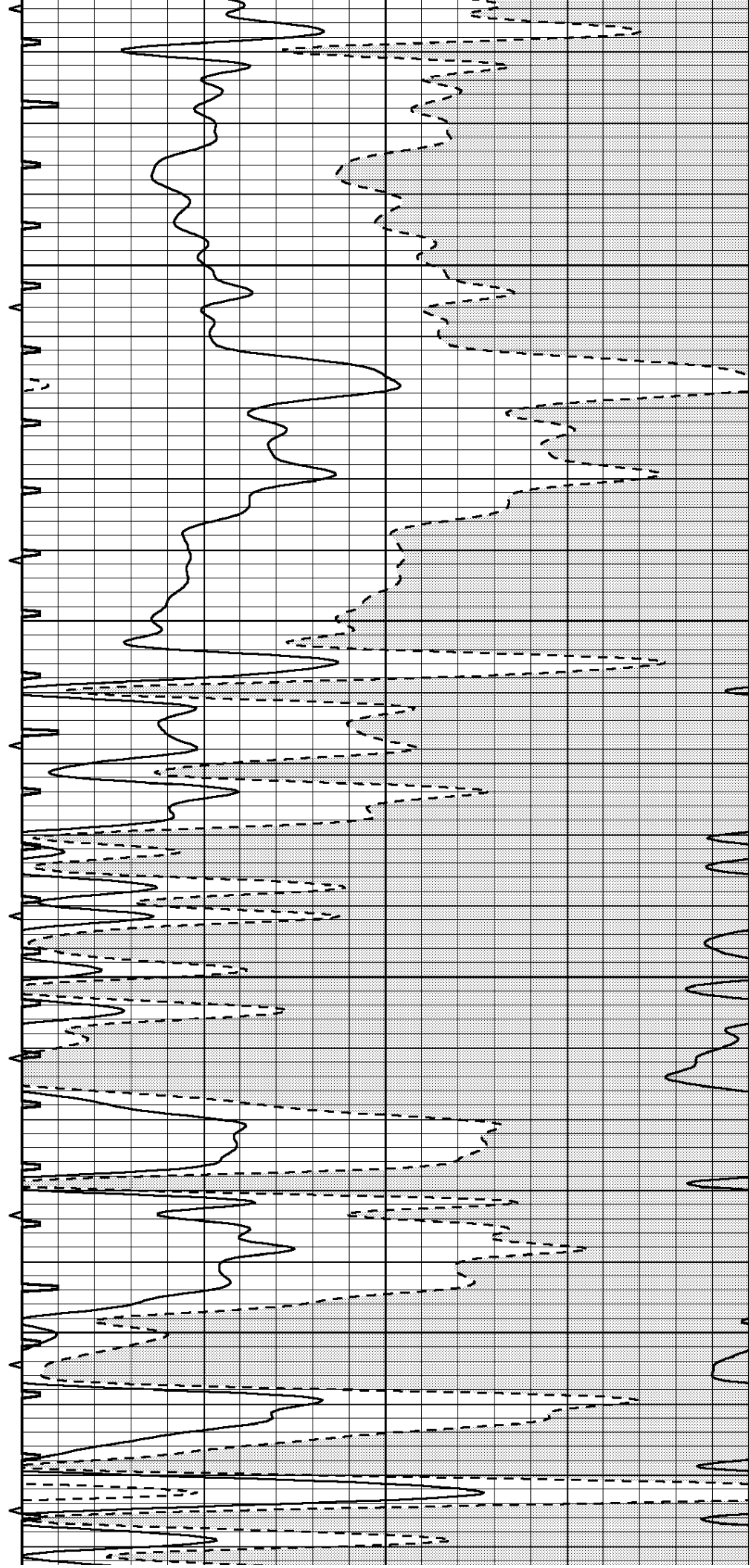


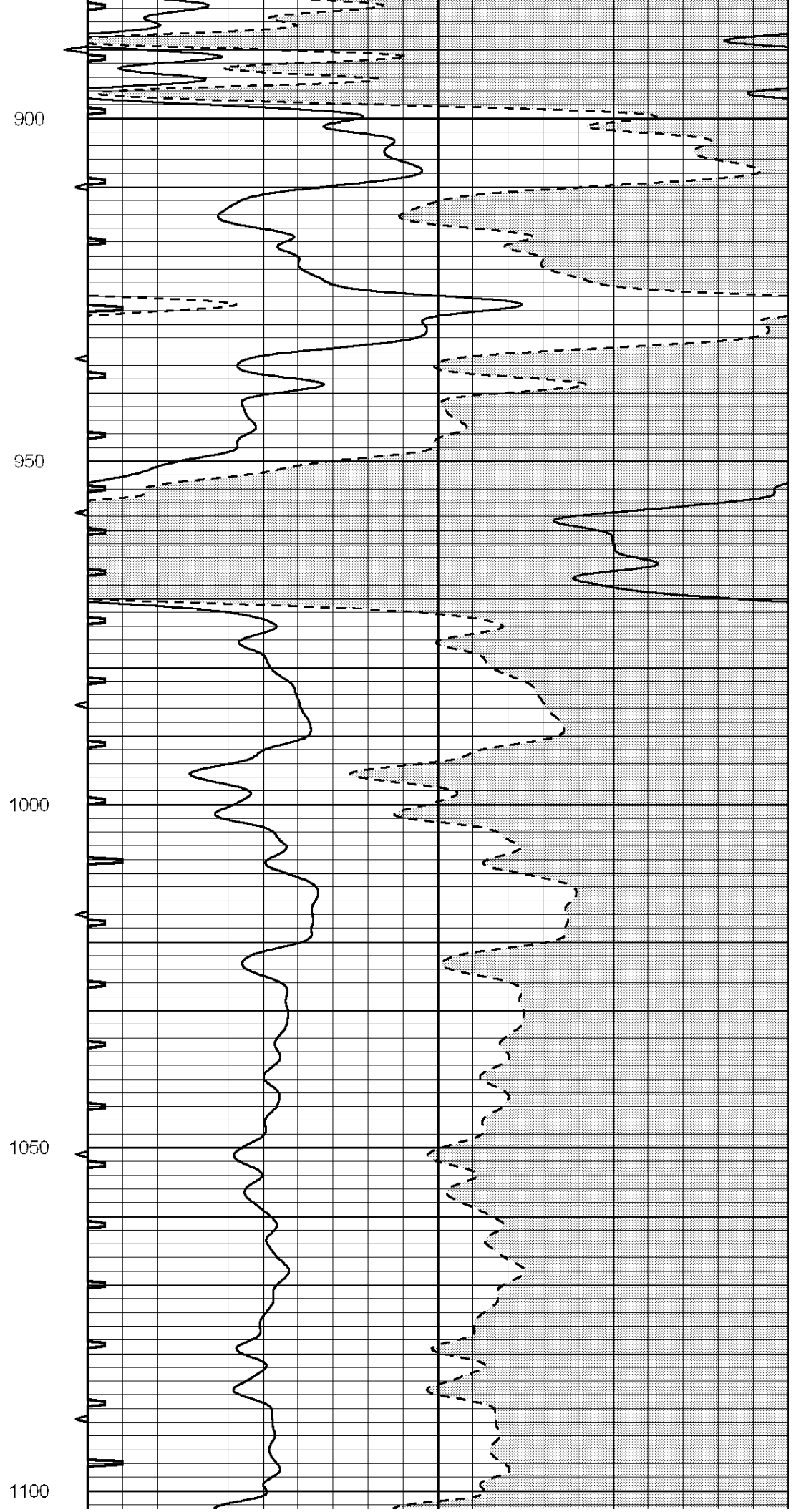
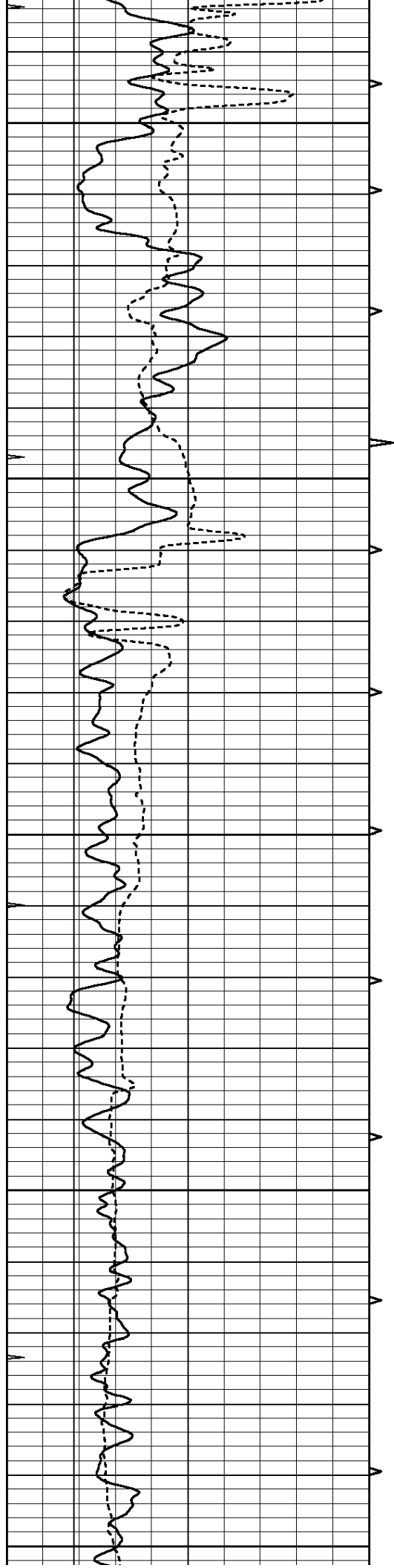
700

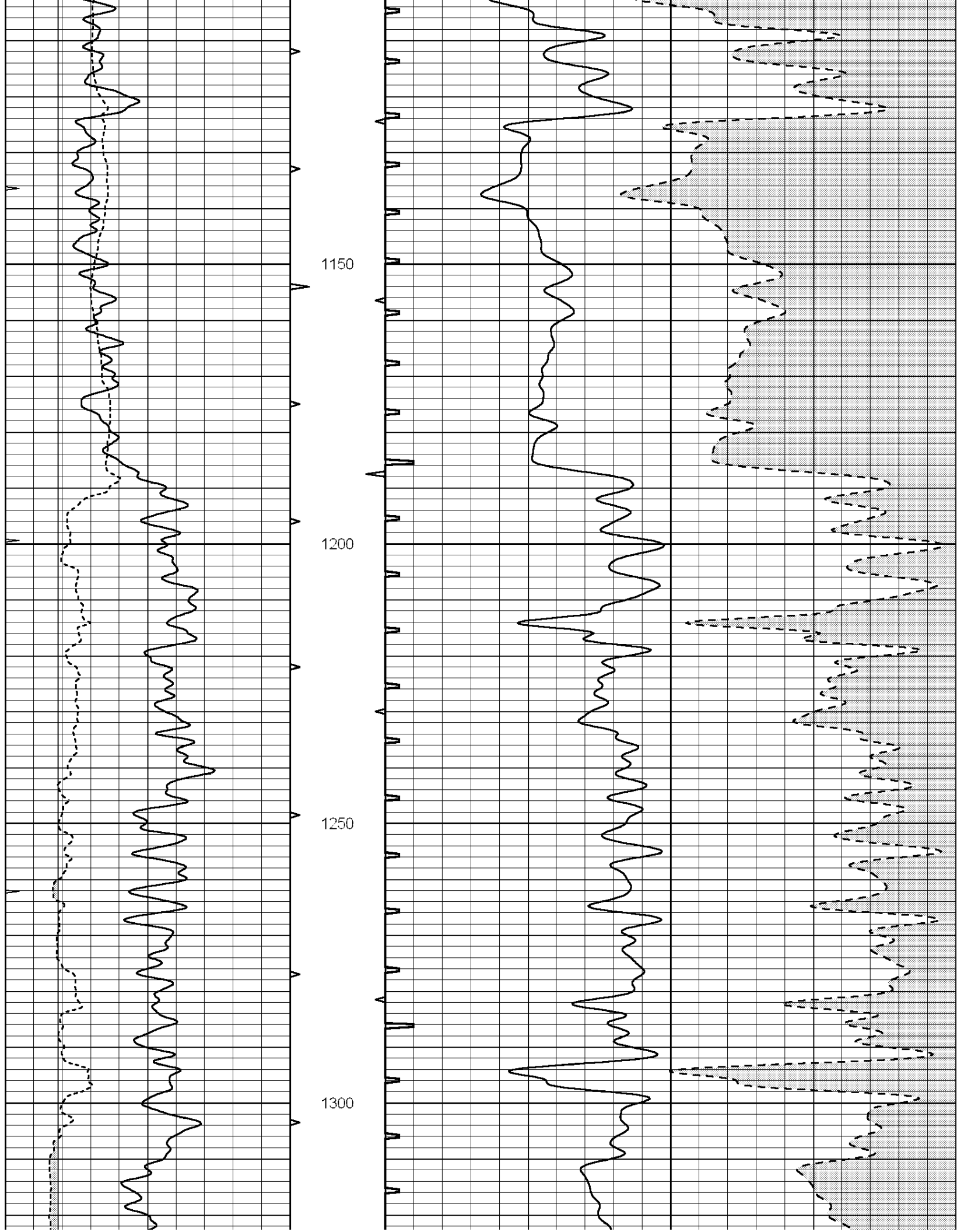
750

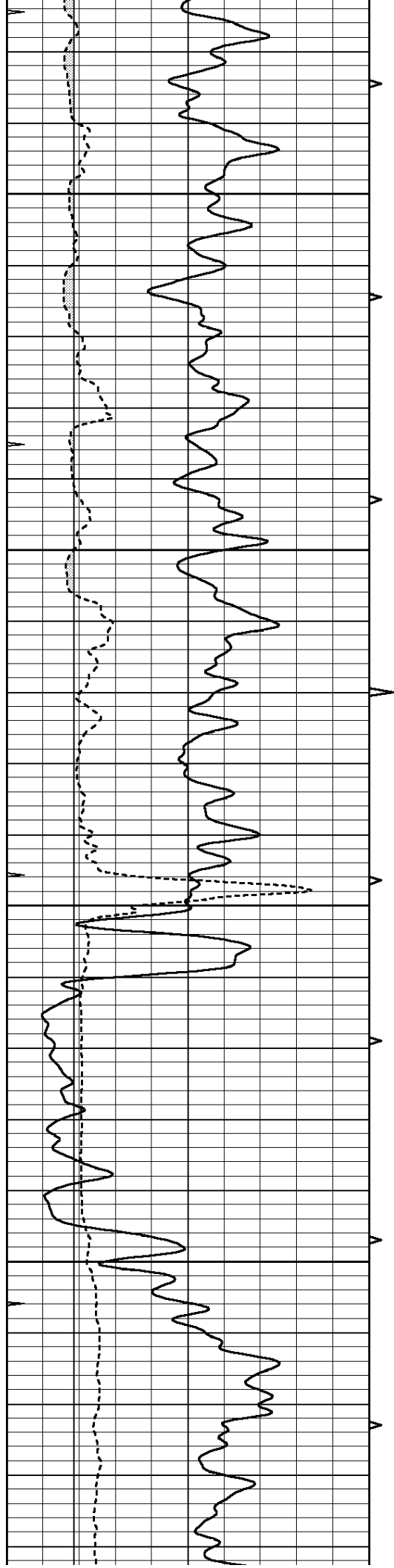
800

850







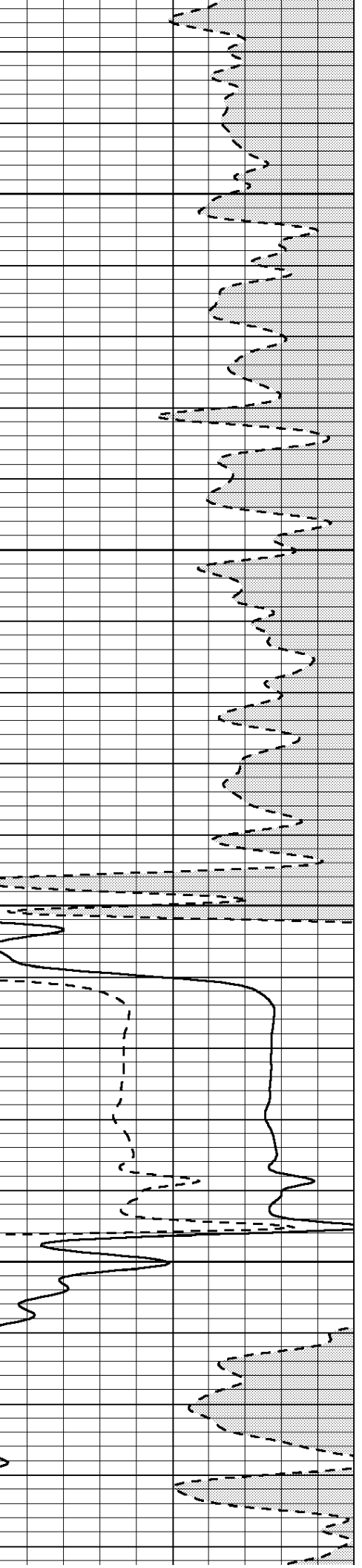
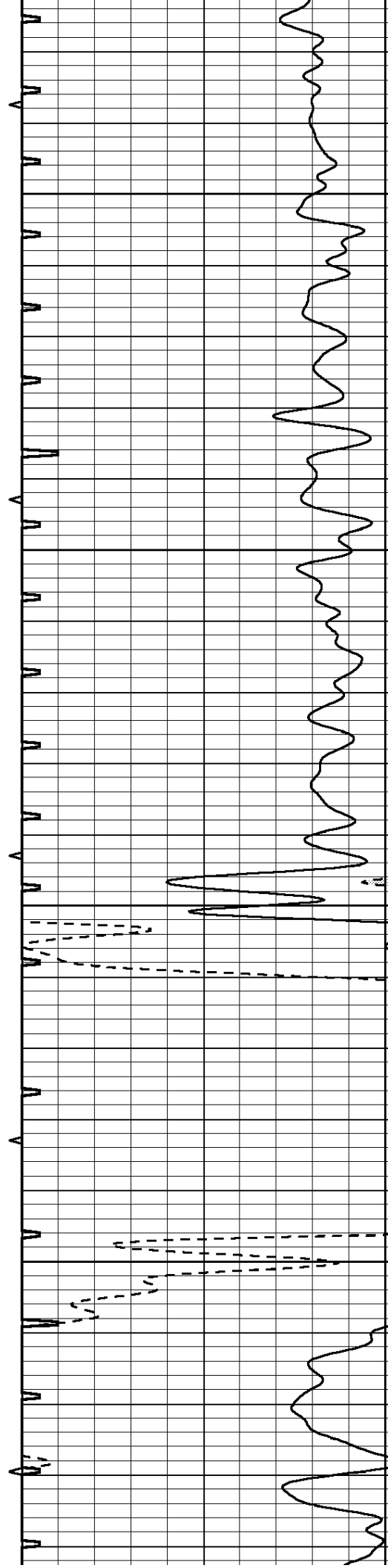


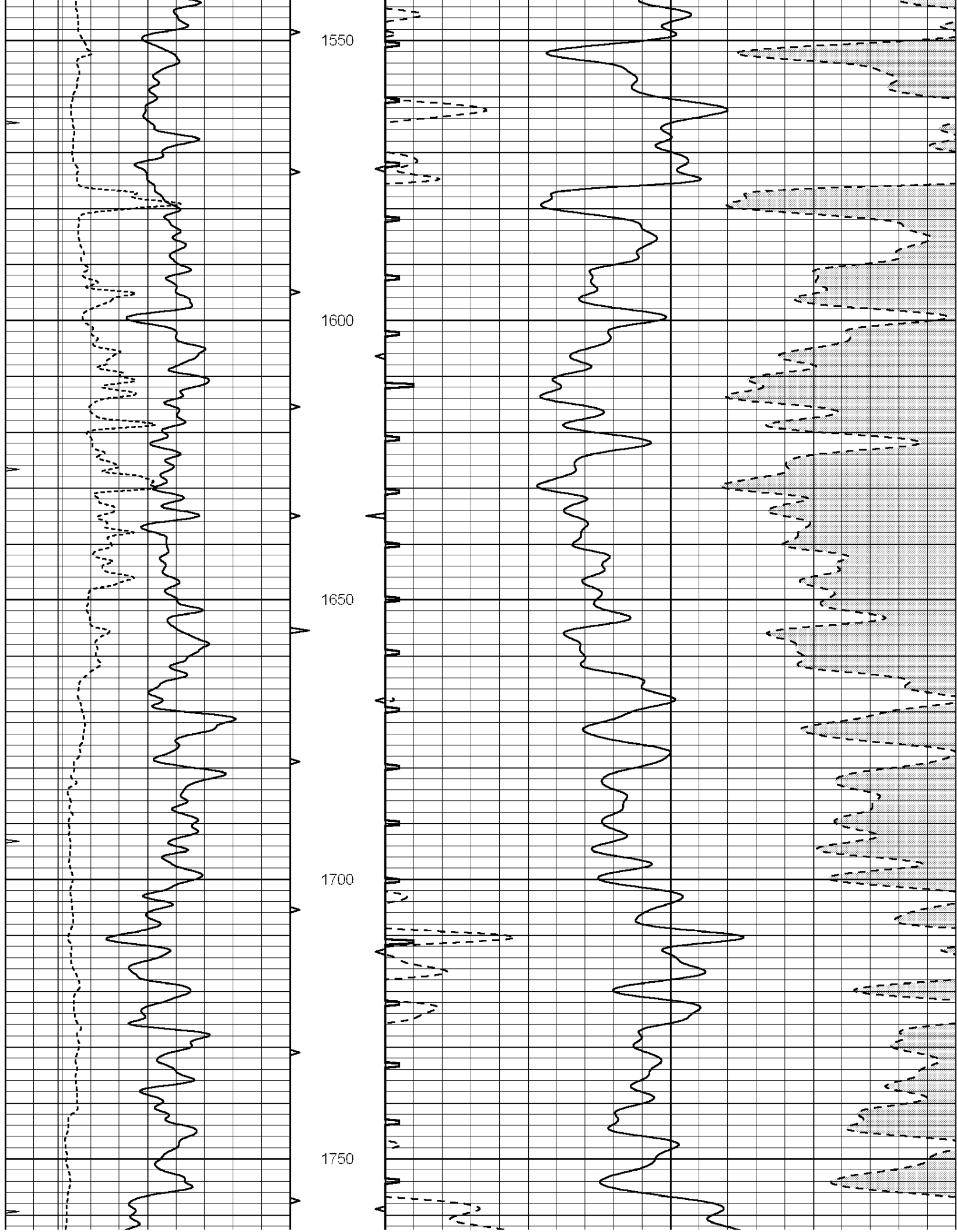
1350

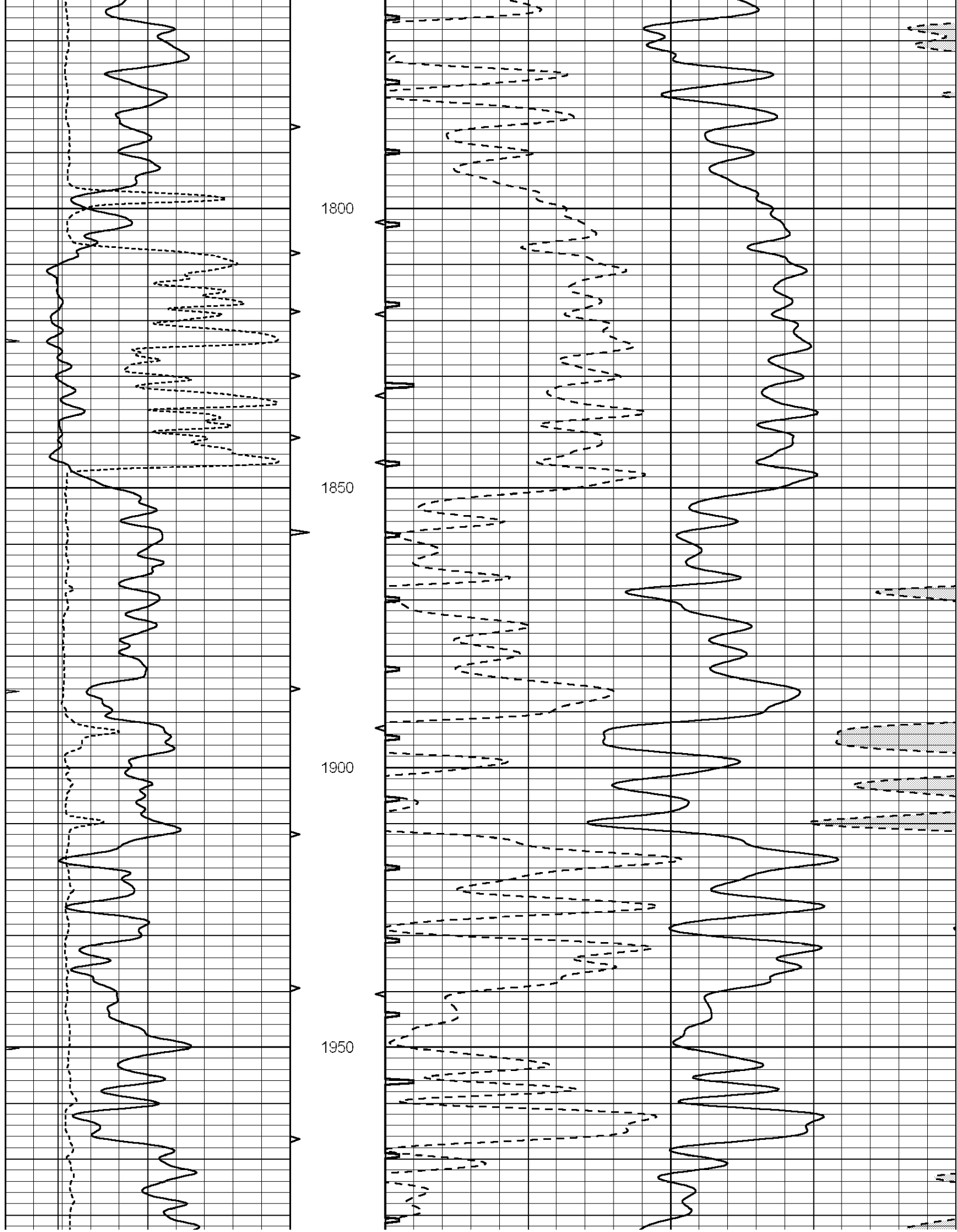
1400

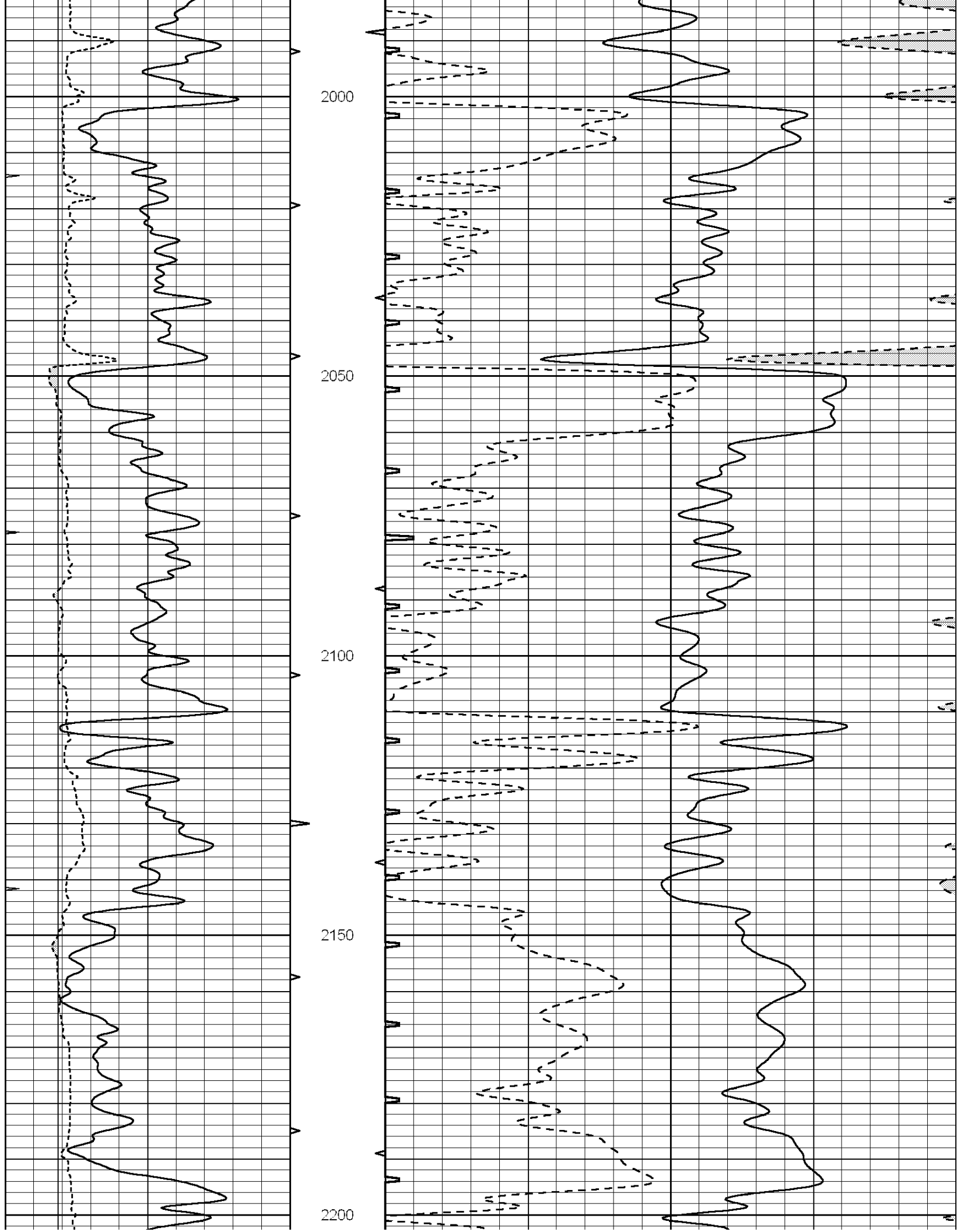
1450

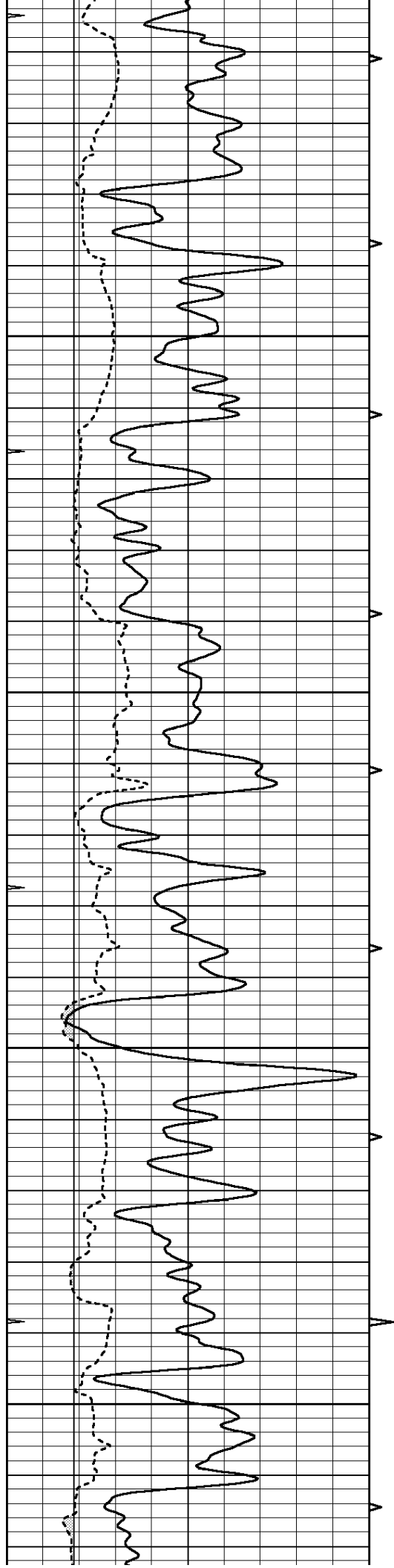
1500









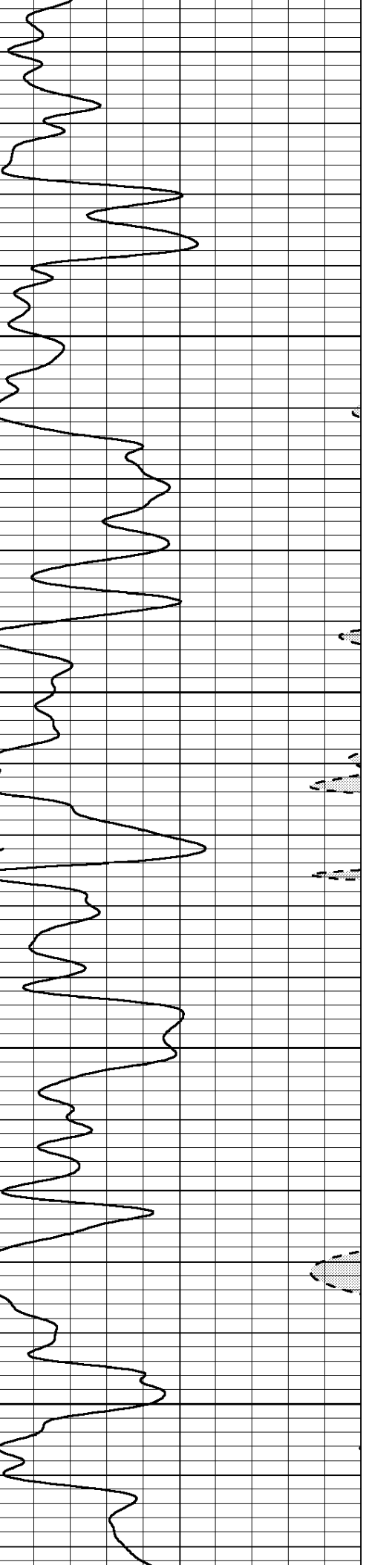
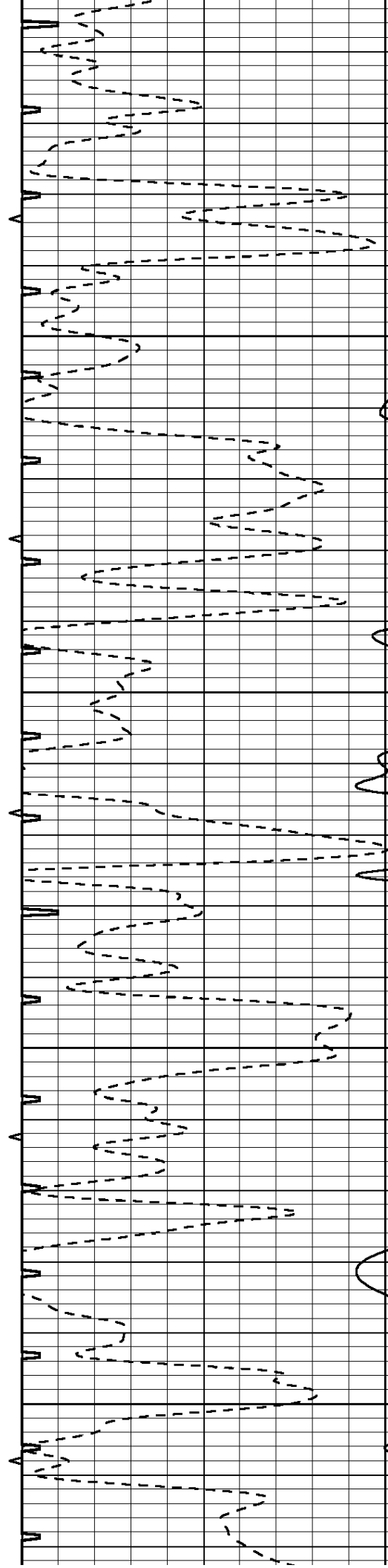


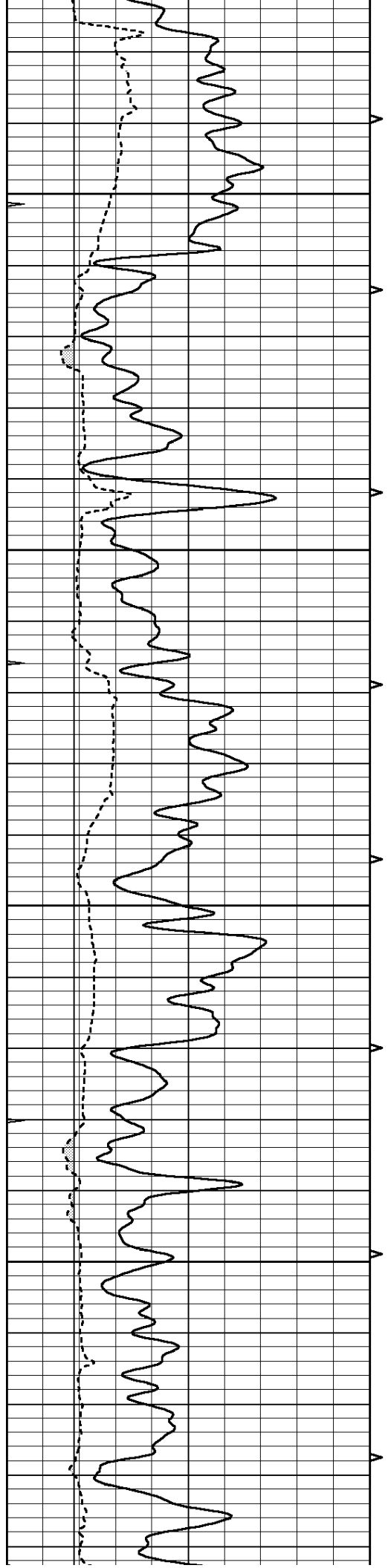
2250

2300

2350

2400



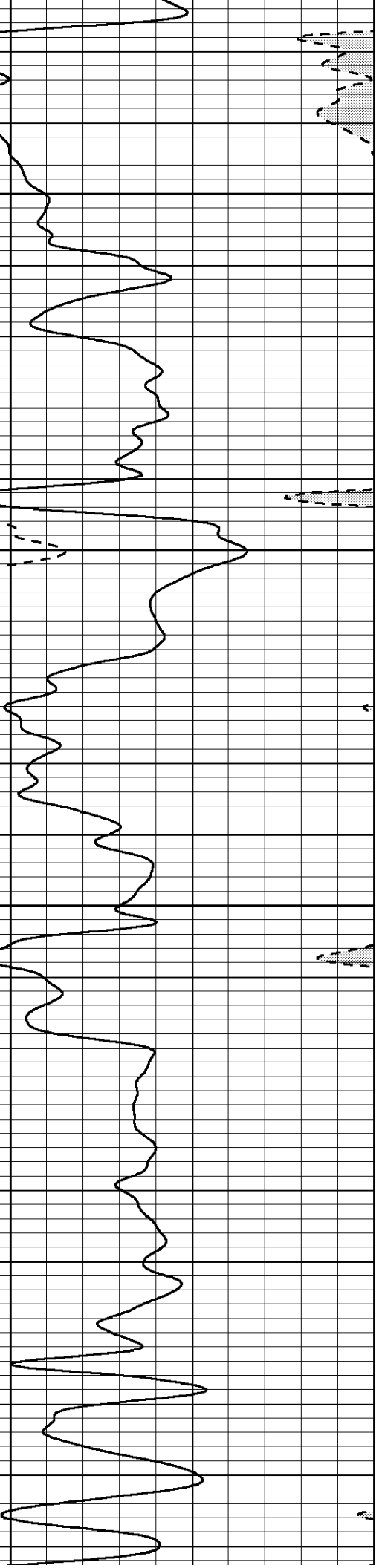
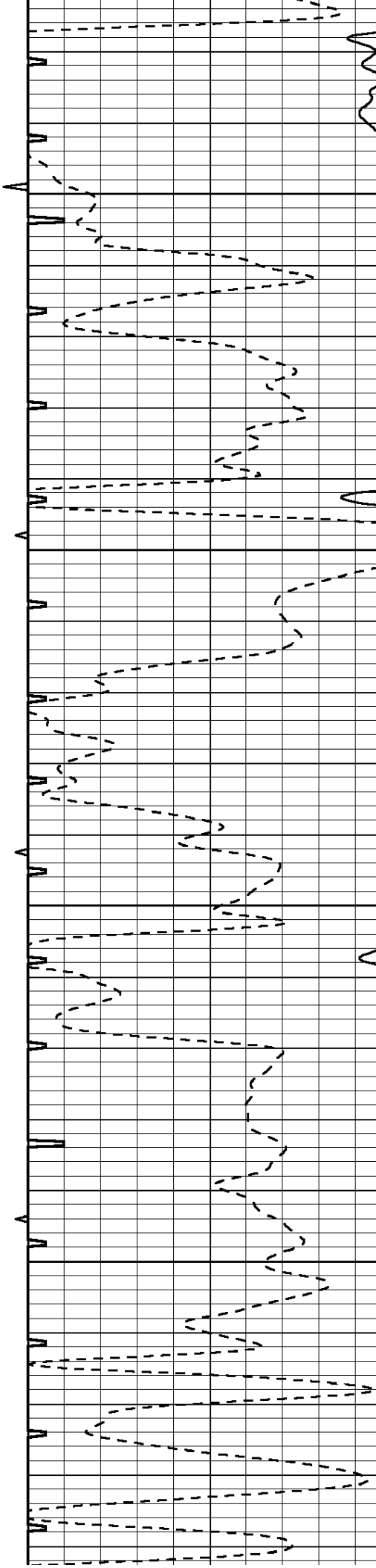


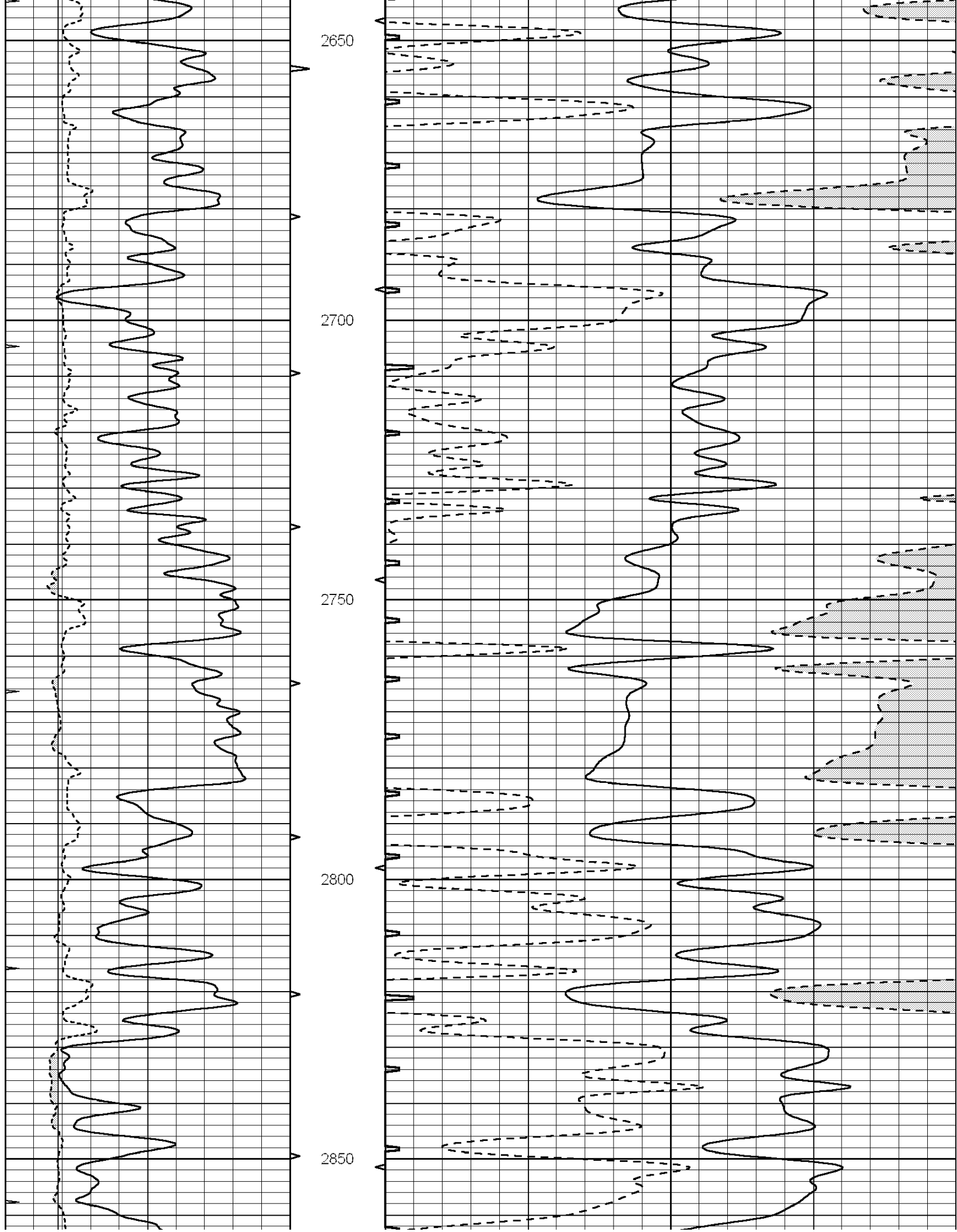
2450

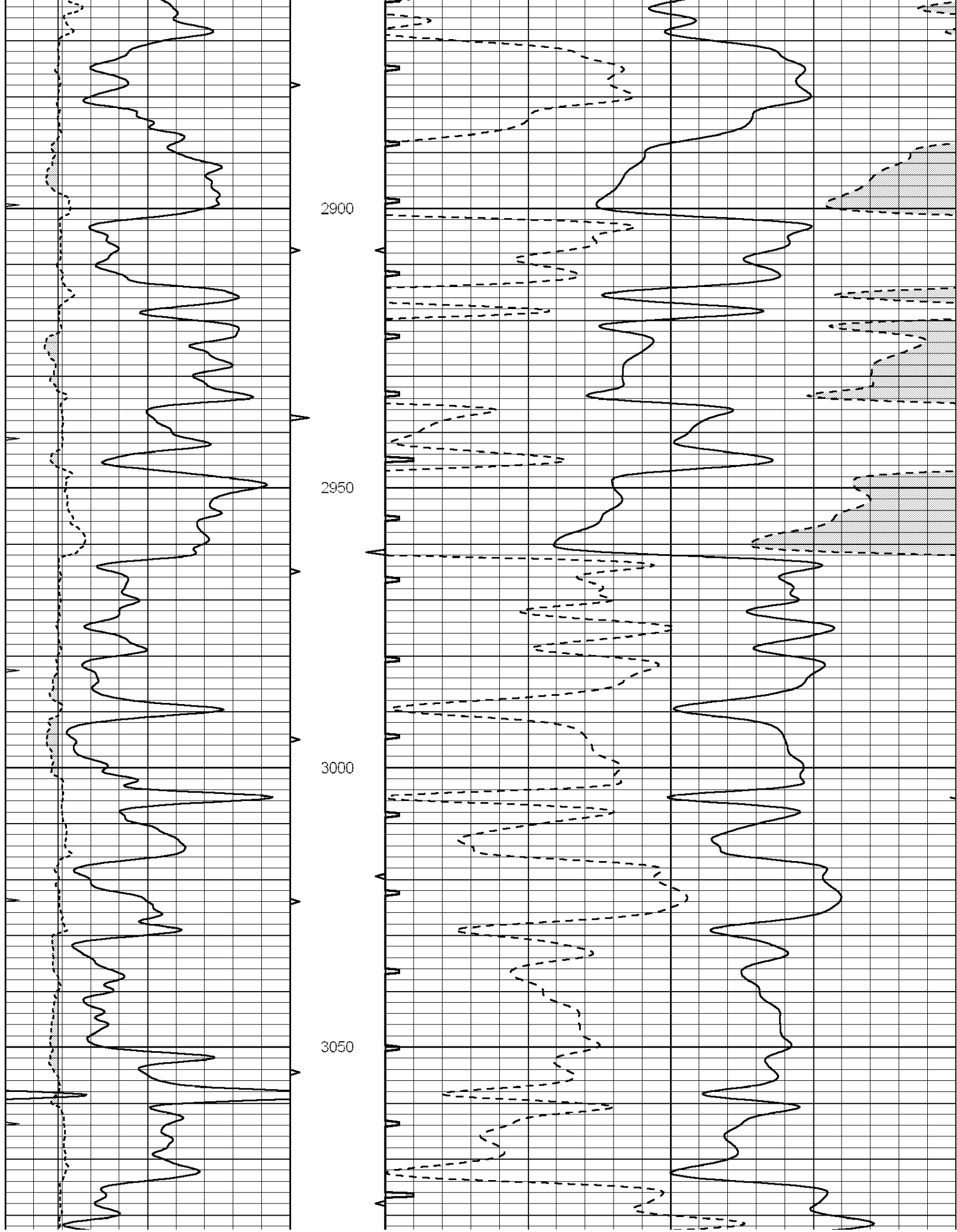
2500

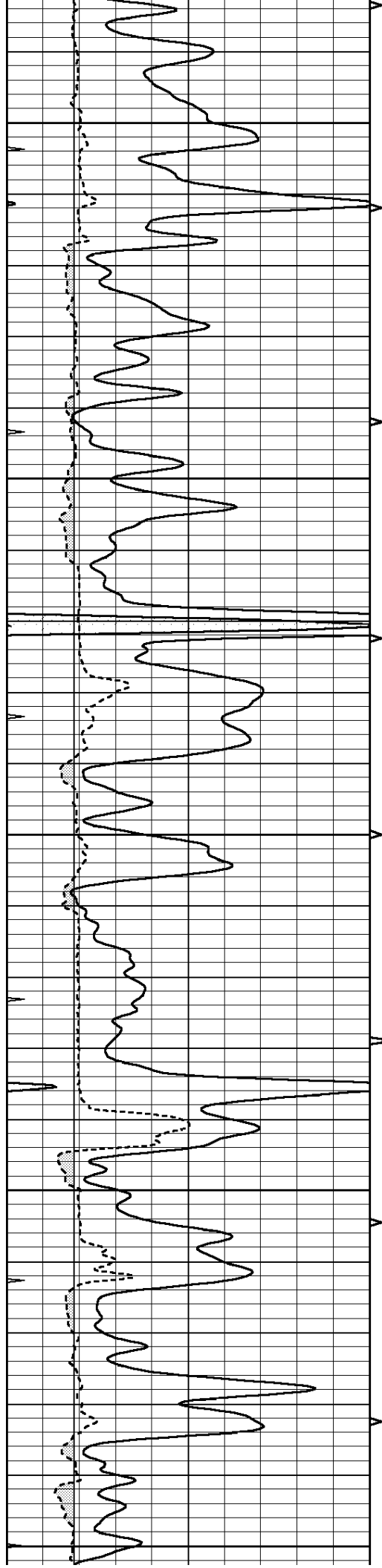
2550

2600









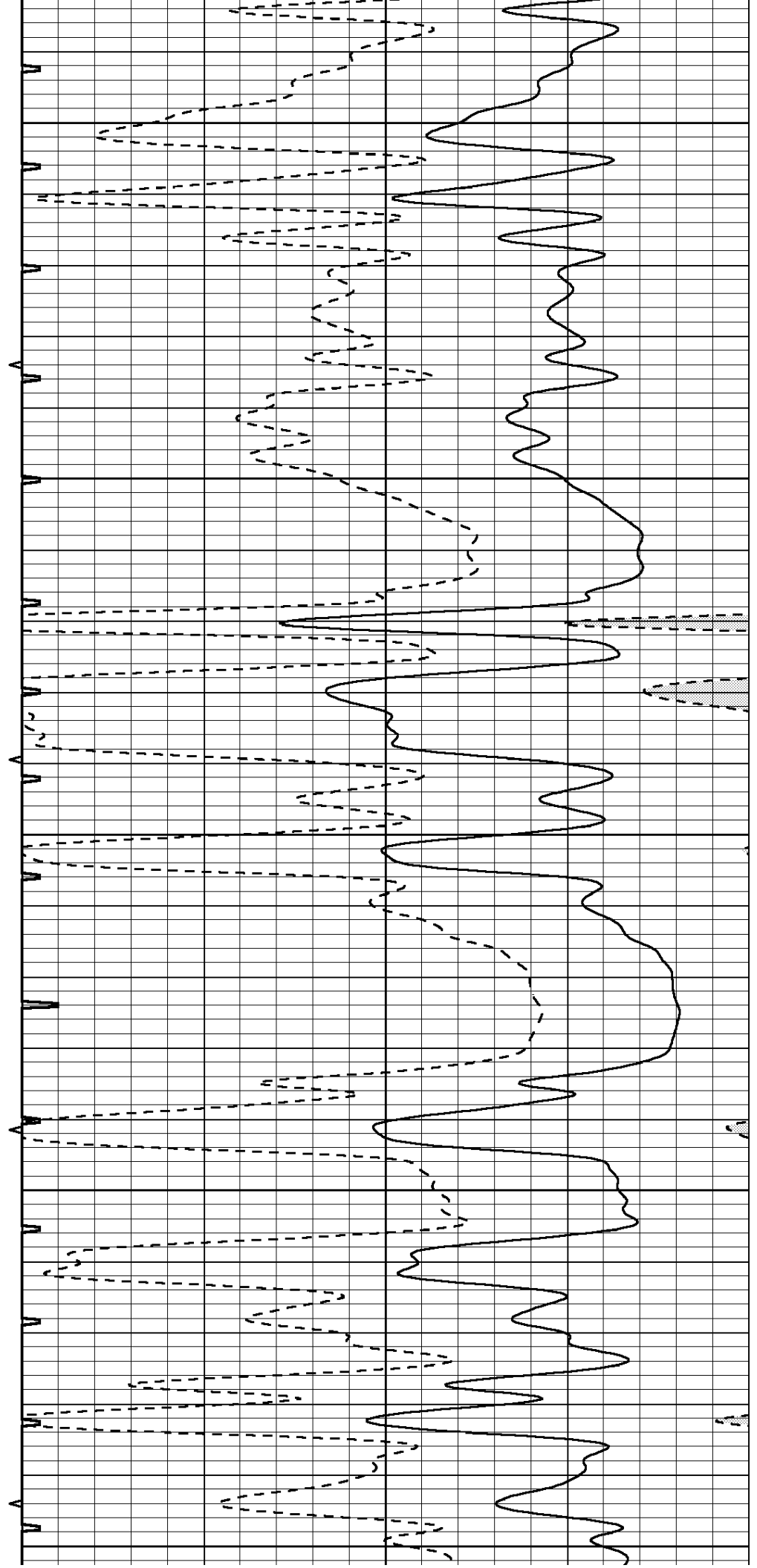
3100

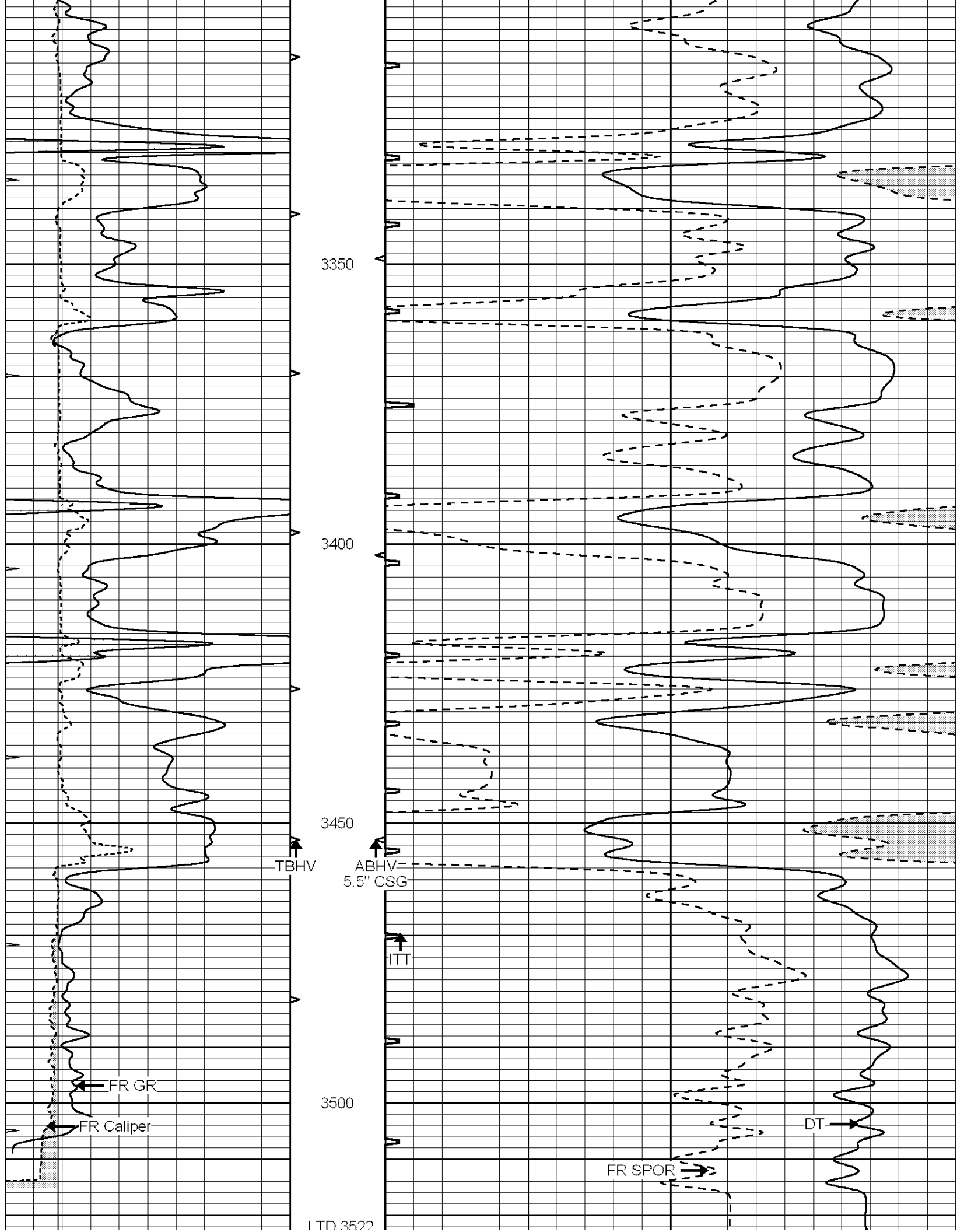
3150

3200

3250

3300





3350

3400

3450

3500

LTD 3522

0	GAMMA RAY (GAPI)	150	ABHV	140	DELTA TIME (usec/ft)	40
6	MELCAL (in)	16	10 (ft3)	0 30	SONIC POROSITY (pu)	-10
0	MINMK	20	TBHV	0	ITT (msec)	20
			0 (ft3)	10		

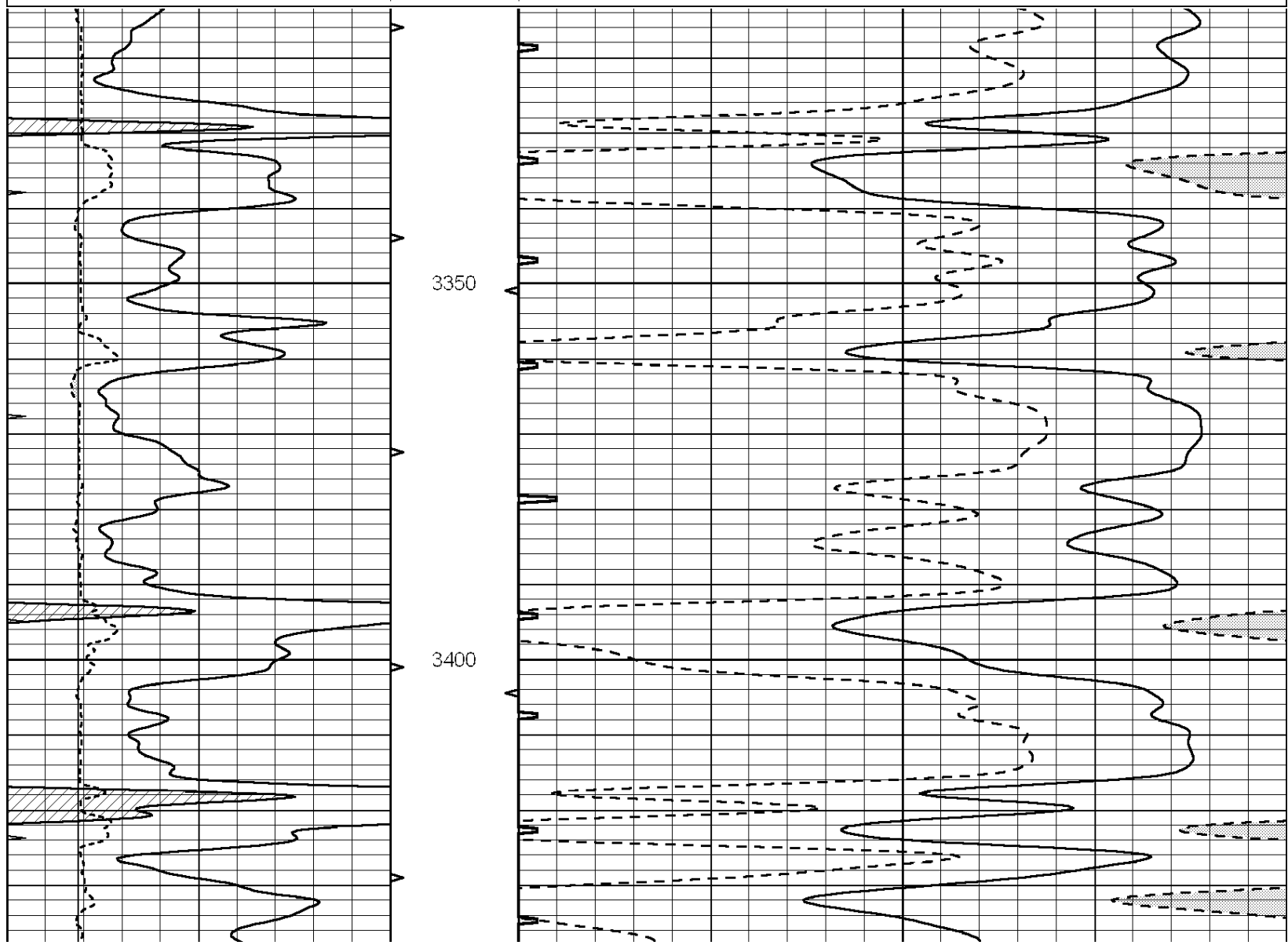


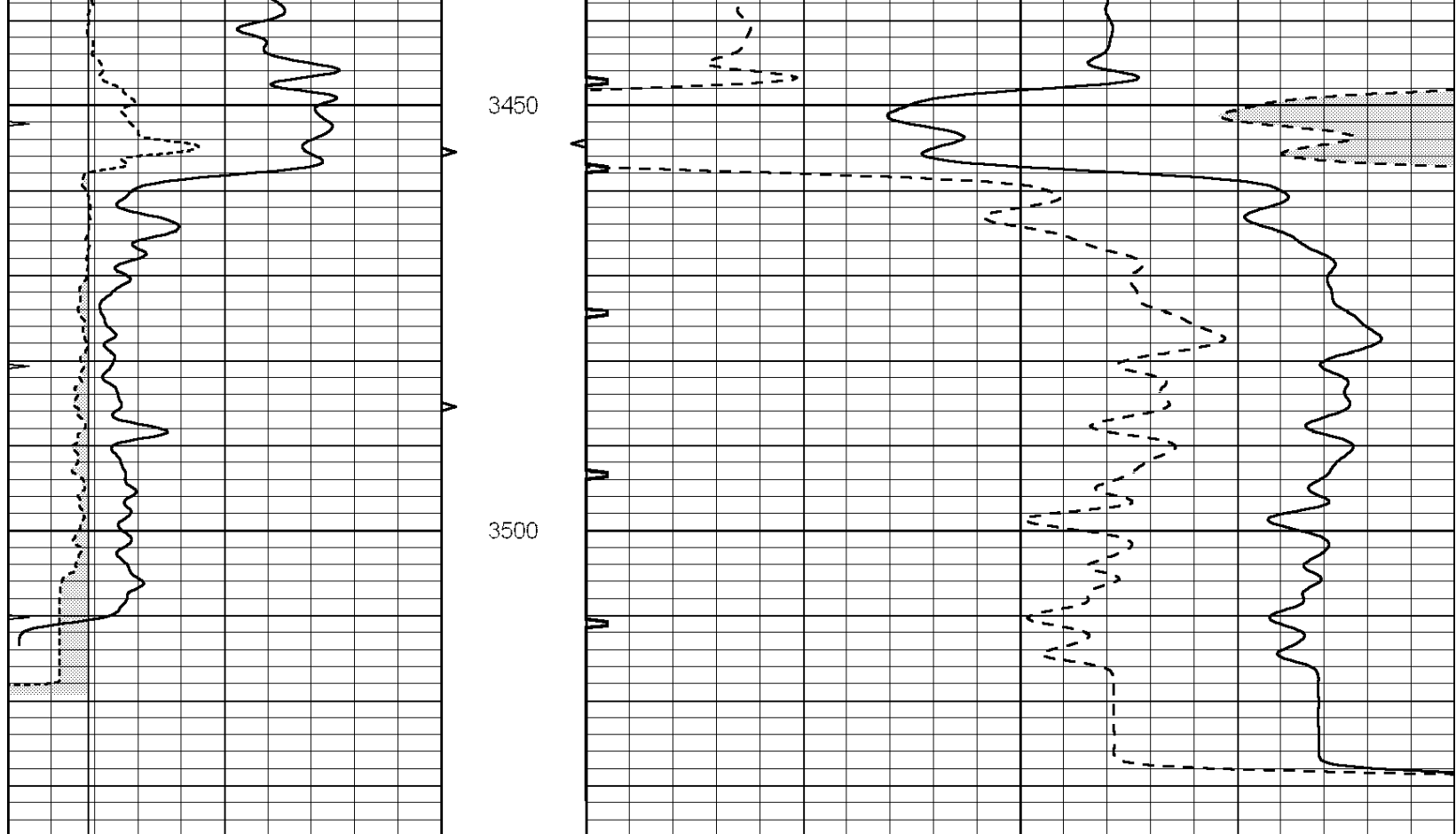
SUPERIOR  
Hays,  
Kansas

# REPEAT SECTION

Database File: 009662ddn.db  
 Dataset Pathname: pass5.1  
 Presentation Format: slt  
 Dataset Creation: Sat Sep 08 17:04:36 2012 by Calc Open-Cased 090629  
 Charted by: Depth in Feet scaled 1:240

0	GAMMA RAY (GAPI)	150	ABHV	140	DELTA TIME (usec/ft)	40
6	MELCAL (in)	16	10 (ft3)	0 30	SONIC POROSITY (pu)	-10
0	MINMK	20	TBHV	0	ITT (msec)	20
			0 (ft3)	10		





0	GAMMA RAY (GAPI)	150	ABHV	140	DELTA TIME (usec/ft)	40
6	MELCAL (in)	16	10 (ft3) 0	30	SONIC POROSITY (pu)	-10
0	MINMK	20	TBHV	0	ITT (msec)	20
			0 (ft3) 10			