



SUPERIOR
Hays,
Kansas

MICRO
LOG

Company OIL PRODUCERS INC OF KANSAS
Well LOWRY #1-20
Field BRAY
County ROOKS State KANSAS

Company OIL PRODUCERS INC OF KANSAS
Well LOWRY #1-20
Field BRAY
County ROOKS
State KANSAS

Location: API #: 15-163-24058-0000
780' FSL & 3845' FWL
SW - NW - SE - SE
SEC 20 TWP 8S RGE 19W
Permanent Datum GROUND LEVEL Elevation 1999
Log Measured From KELLY BUSHING 9' A.G.L.
Drilling Measured From KELLY BUSHING

Other Services
CDL/CNL
DIL/SON
Elevation

Date	9/8/12		
Run Number	TWO		
Depth Driller	3520		
Depth Logger	3522		
Bottom Logged Interval	3504		
Top Log Interval	3100		
Casing Driller	332		
Casing Logger	332		
Bit Size	7.875		
Type Fluid in Hole	CHEMICAL MUD		
Density / Viscosity	9.0 / 54	CHLORIDES 1,600 PPM	
pH / Fluid Loss	10.5 / 7.8		
Source of Sample	FLOWLINE		
Rim @ Meas. Temp	0.80 @ 74F		
Rmf @ Meas. Temp	0.60 @ 74F		
Rmc @ Meas. Temp	0.96 @ 74F		
Source of Rmf / Rmc	MEASURED		
Rim @ BHT	0.53 @ 112F		
Time Circulation Stopped	2 HOURS		
Time Logger on Bottom			
Maximum Recorded Temperature	112F		
Equipment Number	860		
Location	HAYS, KS.		
Recorded By	JEFF GRONEWEG		
Witnessed By	DOUG DAVIS		

<<< Fold Here >>>

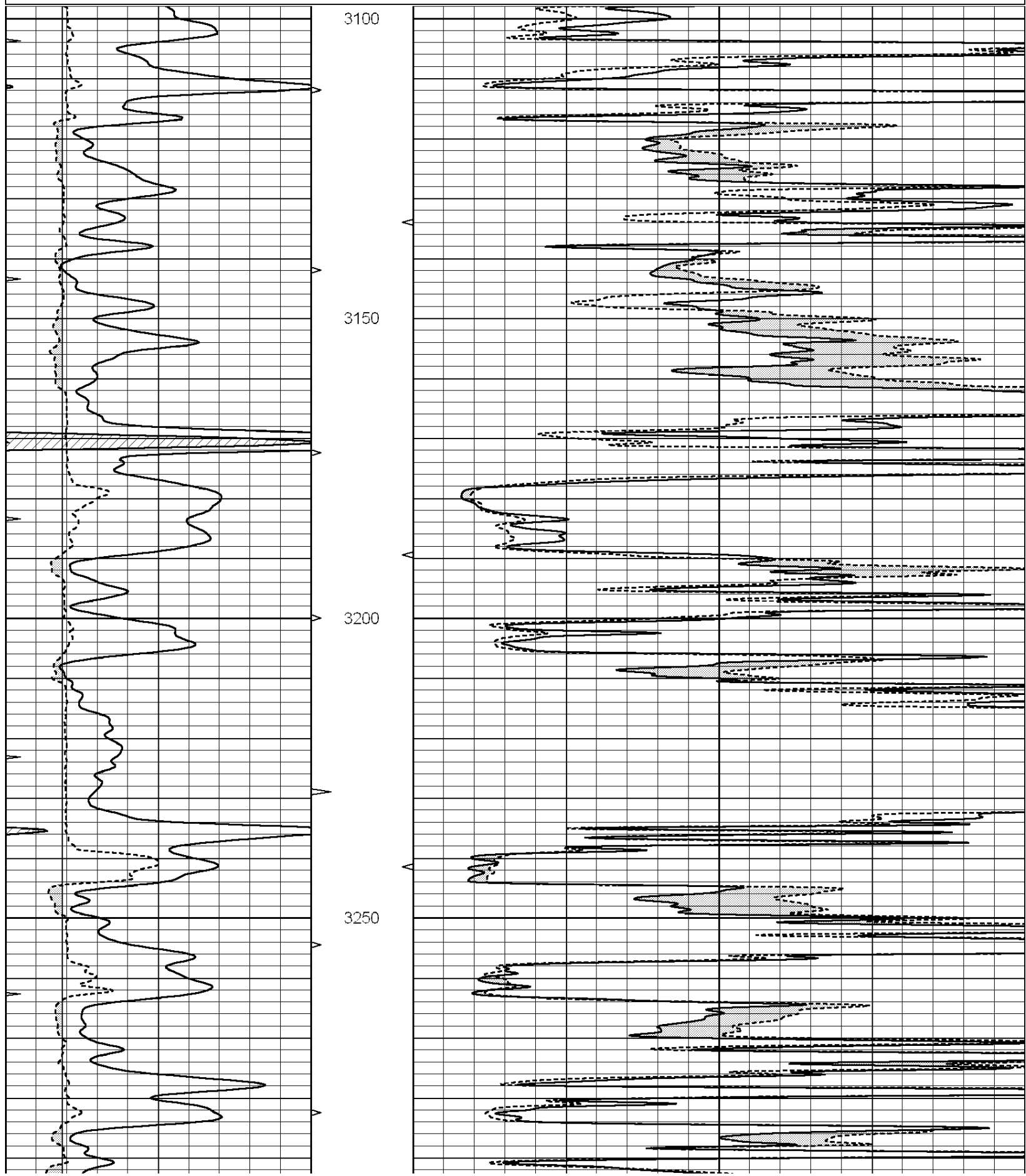
All interpretations are opinions based on inferences from electrical or other measurements and we cannot and do not guarantee the accuracy or correctness of any interpretation, and we shall not, except in the case of gross or willful negligence on our part, be liable or responsible for any loss, costs, damages, or expenses incurred or sustained by anyone resulting from any interpretation made by any of our officers, agents or employees. These interpretations are also subject to our general terms and conditions set out in our current Price Schedule.

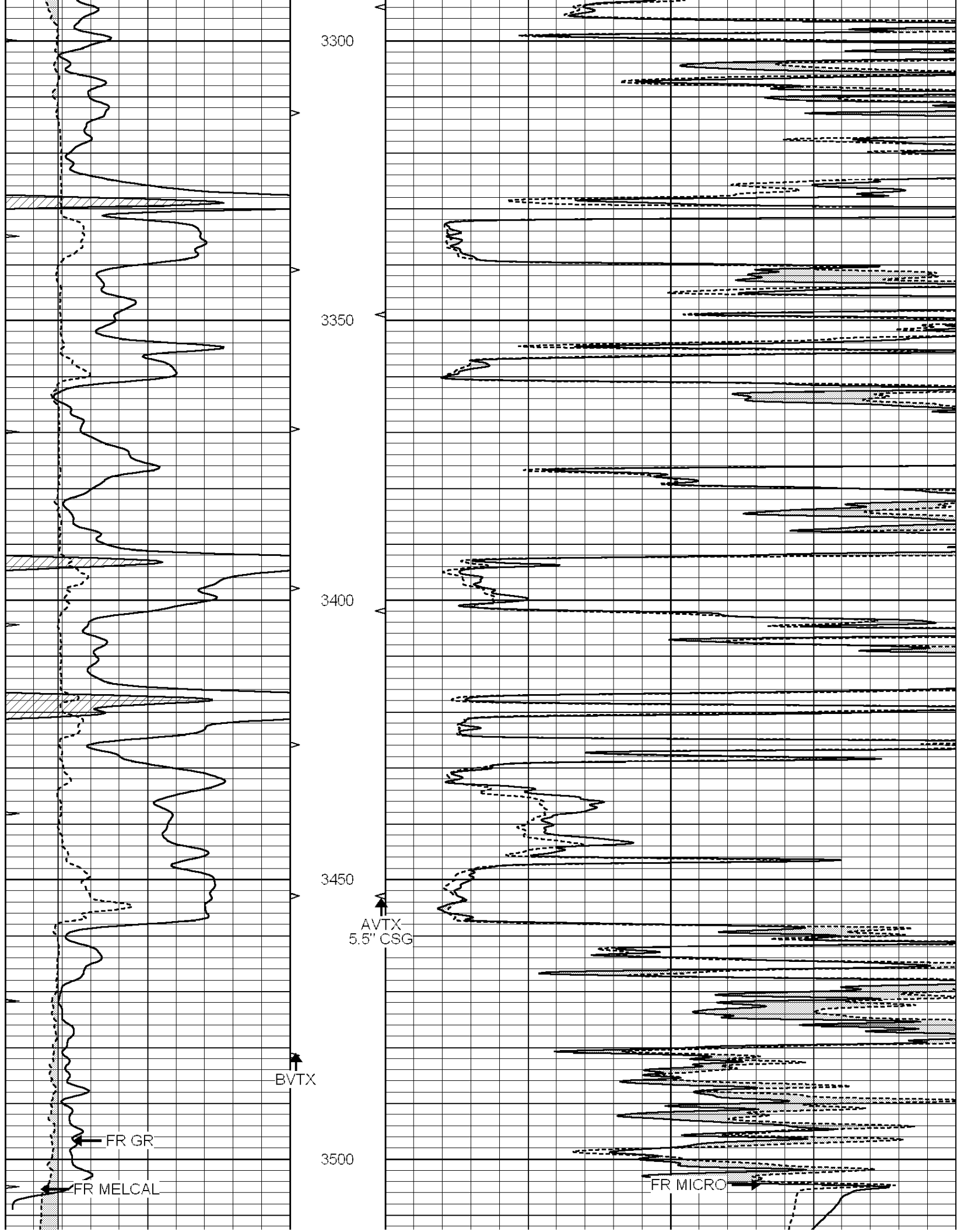
Comments

THANK YOU FOR USING SUPERIOR WELL SERVICES
785-628-6395
ZURICH, KS - 7 MILES NORTH TO RD Q - 1 3/4 MILES WEST - NORTH INTO

0	GAMMA RAY (GAPI)	150
6	MELCAL (in)	16
<hr style="border-top: 1px dashed black;"/>		
0	MINMK	20

0	MEL1.5 (Ohm-m)	40
0	MEL2.0 (Ohm-m)	40
<hr style="border-top: 1px dashed black;"/>		





LTD 3522

0	GAMMA RAY (GAPI)	150
6	MELCAL (in)	16
0	MINMK	20

0	MEL1.5 (Ohm-m)	40
0	MEL2.0 (Ohm-m)	40



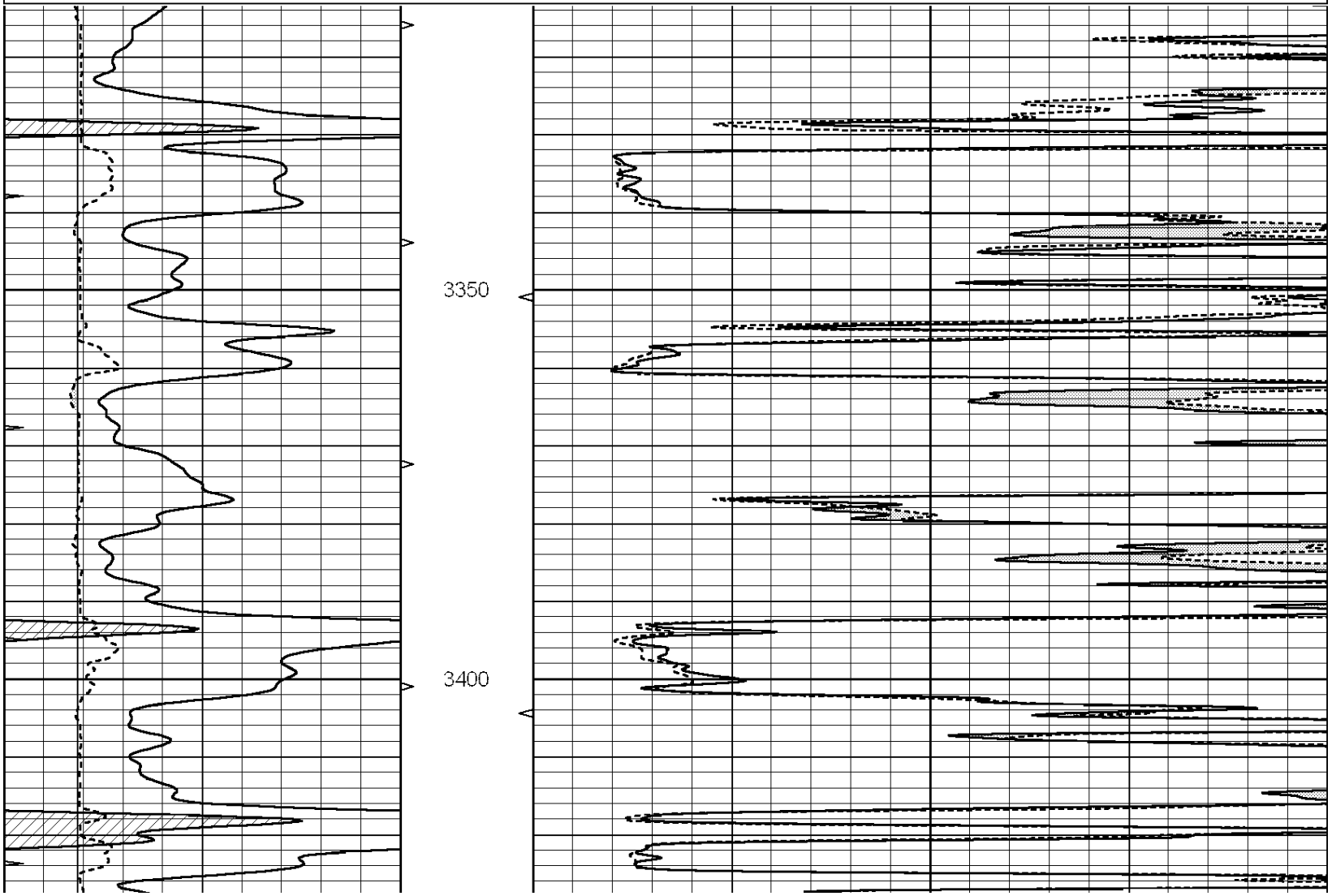
SUPERIOR
Hays,
Kansas

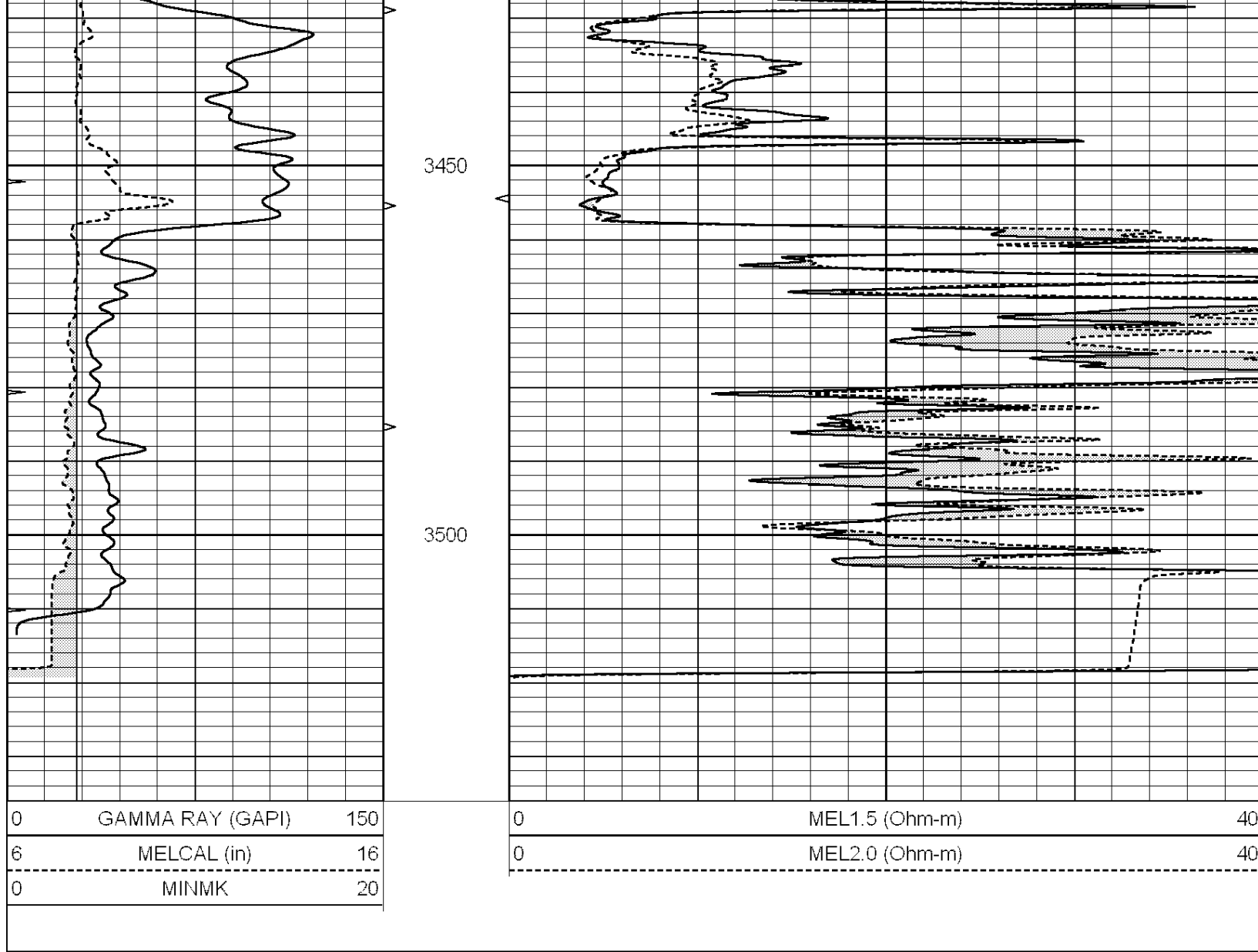
REPEAT SECTION

Database File: 009662ddn.db
Dataset Pathname: pass5.1
Presentation Format: micro
Dataset Creation: Sat Sep 08 17:04:36 2012 by Calc Open-Cased 090629
Charted by: Depth in Feet scaled 1:240

0	GAMMA RAY (GAPI)	150
6	MELCAL (in)	16
0	MINMK	20

0	MEL1.5 (Ohm-m)	40
0	MEL2.0 (Ohm-m)	40





Calibration Report

Database File: 009662ddn.db
 Dataset Pathname: pass6.1
 Dataset Creation: Sat Sep 08 17:27:53 2012 by Calc Open-Cased 090629

MICRO Calibration Report

Serial Number: MICRO4
 Tool Model: PROBE
 Performed: Mon Aug 20 22:27:50 2012

Caliper Calibration: Gain=2.061 Offset=-3.733

References	Low Cal	High Cal
Readings	7.300	13.000
	5.449	8.214

1.5" Calibration: Gain=47.000 Offset=-0.800

References	Low Cal	High Cal
Readings	0.000	20.000
	0.009	1.541

2" Calibration: Gain=47.000 Offset=0.000

References	Low Cal	High Cal
Readings	0.000	20.000

References
Readings

0.000
0.004

20.000
1.198

Gamma Ray Calibration Report

Serial Number: GR5
Tool Model: OPEN
Performed: Wed Aug 08 15:07:38 2012

Calibrator Value: 1.0 GAPI

Background Reading: 0.0 cps
Calibrator Reading: 1.0 cps

Sensitivity: 0.7500 GAPI/cps