

Perf-Tech Wireline Services

DUAL RECEIVER CEMENT BOND LOG

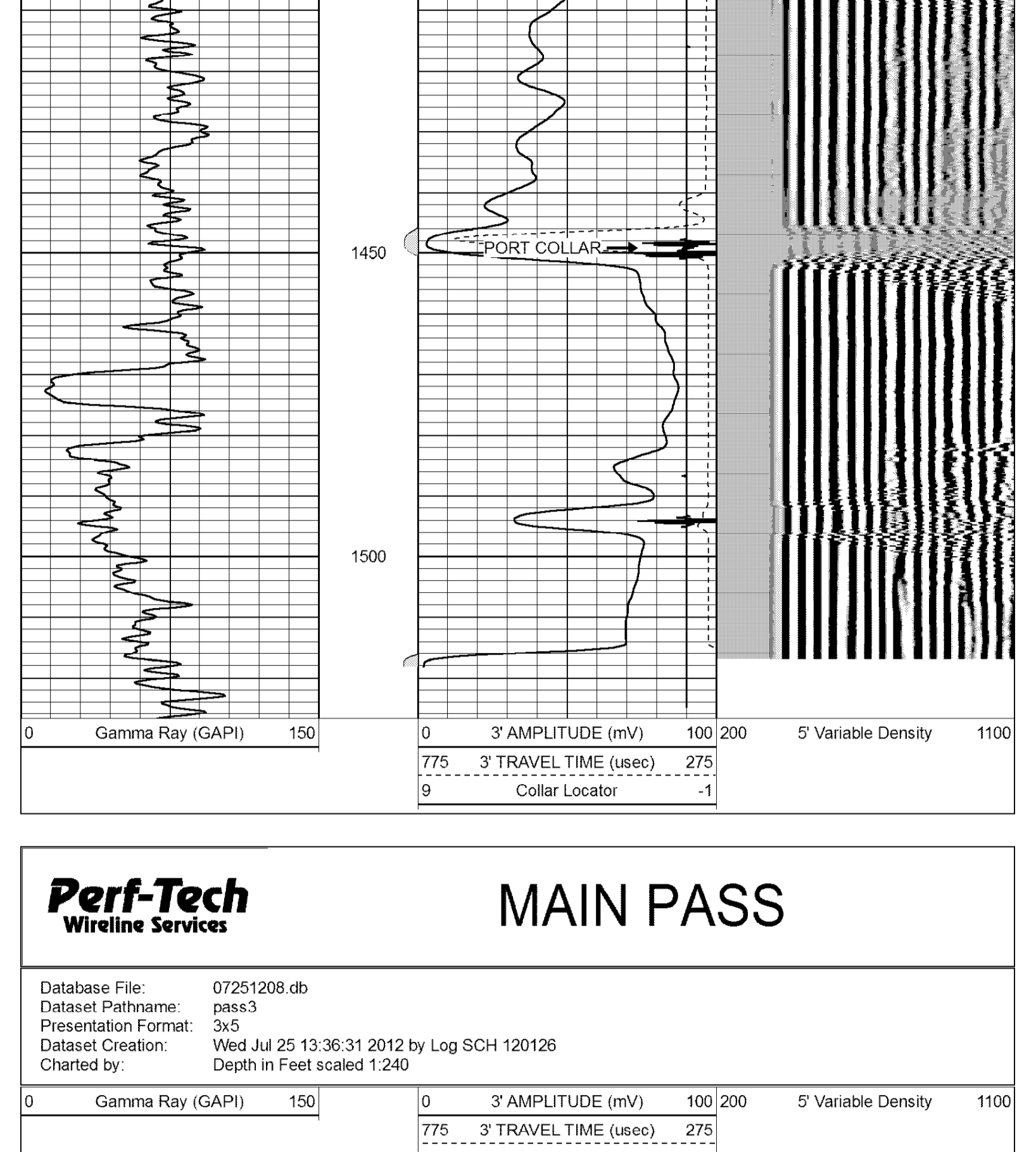
Company	DK OPERATING, INC.	Location	1807' NW 1/4 & 100' FEL	Client Services	
Well	UEHLING TRUST #1-1	County	HODGEMAN	APR #	13-03-21808-0000
Field	HODDNES	State	KANSAS	Permeable Datum	SEC 1 TWP 21S RGE 23W
Company	DK OPERATING, INC.	Log Measured From	GROUND LEVEL	Emission	K 8 2285
Well	UEHLING TRUST #1-1	Drilling Measured From	KELLY BUSHING & AISL	OT	2244
Field	HODDNES	Date	JULY 25, 2012	GI	2244
Company	DK OPERATING, INC.	Run Number	ONE	Bottom Log Interval	3100
Well	UEHLING TRUST #1-1	Depth Log Interval	4448	Top Log Interval	4447
Field	HODDNES	Time Log Interval	117	Time Well Report To	
Company	DK OPERATING, INC.	Equipment Number	PT-08	Time Well Report From	
Well	UEHLING TRUST #1-1	Operator	FERBET SANDERS	Max. Recorded Temp	33.30
Field	HODDNES	Wireline	HE RICKETZ Corp	Density / Velocity	
Company	DK OPERATING, INC.	Run Number	220	Run Date	7/25
Well	UEHLING TRUST #1-1	Board	4448	TI/O	220
Field	HODDNES	Size	3"	Size	3"
Company	DK OPERATING, INC.	Run Number	220	Run Date	7/25
Well	UEHLING TRUST #1-1	Board	4448	TI/O	220
Field	HODDNES	Size	3"	Size	3"
Company	DK OPERATING, INC.	Run Number	220	Run Date	7/25
Well	UEHLING TRUST #1-1	Board	4448	TI/O	220
Field	HODDNES	Size	3"	Size	3"
Company	DK OPERATING, INC.	Run Number	220	Run Date	7/25
Well	UEHLING TRUST #1-1	Board	4448	TI/O	220
Field	HODDNES	Size	3"	Size	3"
Company	DK OPERATING, INC.	Run Number	220	Run Date	7/25
Well	UEHLING TRUST #1-1	Board	4448	TI/O	220
Field	HODDNES	Size	3"	Size	3"
Company	DK OPERATING, INC.	Run Number	220	Run Date	7/25
Well	UEHLING TRUST #1-1	Board	4448	TI/O	220
Field	HODDNES	Size	3"	Size	3"

<<< Fold Here >>>

All interpretations are opinions based on inferences from electrical or other measurements and we cannot and do not guarantee the accuracy or correctness of any interpretation, and we shall not, except in the case of gross or willful negligence on our part, be liable or responsible for any loss, costs, damages, or expenses incurred or sustained by anyone resulting from any interpretation made by any of our officers, agents or employees. These interpretations are also subject to our general terms and conditions set out in our current Price Schedule.

Comments

THANKS FOR USING PERF-TECH WIRELINE
785-623-3969
BAZINE KS, SOUTH FIRST CURVE, 5 WEST, 2 SOUTH TO TANK BATTERY,
1/4 WEST, SOUTH INTO

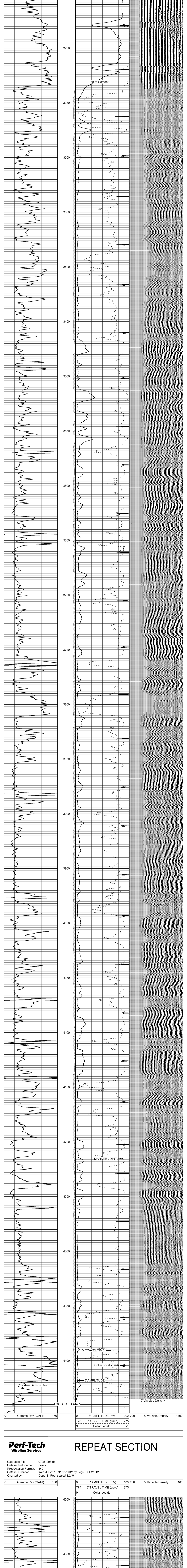


LOGGED TD 4448

Perf-Tech Wireline Services

MAIN PASS

Database File:	07251208.db	3' AMPLITUDE (mV)	100	5' Variable Density	1100
Dataset Pathname:	pass3	3' TRAVEL TIME (uSec)	275		
Presentation Format:	3x5	Collar Locator	-1		
Dataset Creation:	Wed Jul 25 13:36:31 2012 by Log SCH 120126				
Charted by:	Depth in Feet scaled 1.240				



LOGGED TD 4448

Perf-Tech Wireline Services

REPEAT SECTION

Database File:	07251208.db	3' AMPLITUDE (mV)	100	5' Variable Density	1100
Dataset Pathname:	pass2	3' TRAVEL TIME (uSec)	275		
Presentation Format:	3x5	Collar Locator	-1		
Dataset Creation:	Wed Jul 25 13:31:15 2012 by Log SCH 120126				
Charted by:	Depth in Feet scaled 1.240				

