

Perf-Tech Wireline Services

DUAL RECEIVER CEMENT BOND LOG

Company AMERICAN WARRIOR, INC.
Well MEYER-FREDA UNIT #1

Field MARGHEIM
County NESS
State KANSAS

Location: 40' FINL & 338' FIML
API #: 15-135-35457-0000

Well MEYER-FREDA UNIT #1
Company AMERICAN WARRIOR, INC.

Field MARGHEIM
County NESS
State KANSAS

Location: 40' FINL & 338' FIML
API #: 15-135-35457-0000

Well MEYER-FREDA UNIT #1
Company AMERICAN WARRIOR, INC.

Field MARGHEIM
County NESS
State KANSAS

Location: 40' FINL & 338' FIML
API #: 15-135-35457-0000

Well MEYER-FREDA UNIT #1
Company AMERICAN WARRIOR, INC.

Field MARGHEIM
County NESS
State KANSAS

Location: 40' FINL & 338' FIML
API #: 15-135-35457-0000

Well MEYER-FREDA UNIT #1
Company AMERICAN WARRIOR, INC.

Field MARGHEIM
County NESS
State KANSAS

Location: 40' FINL & 338' FIML
API #: 15-135-35457-0000

Well MEYER-FREDA UNIT #1
Company AMERICAN WARRIOR, INC.

Field MARGHEIM
County NESS
State KANSAS

Location: 40' FINL & 338' FIML
API #: 15-135-35457-0000

Well MEYER-FREDA UNIT #1
Company AMERICAN WARRIOR, INC.

Field MARGHEIM
County NESS
State KANSAS

Location: 40' FINL & 338' FIML
API #: 15-135-35457-0000

Well MEYER-FREDA UNIT #1
Company AMERICAN WARRIOR, INC.

Field MARGHEIM
County NESS
State KANSAS

Location: 40' FINL & 338' FIML
API #: 15-135-35457-0000

Well MEYER-FREDA UNIT #1
Company AMERICAN WARRIOR, INC.

Field MARGHEIM
County NESS
State KANSAS

Location: 40' FINL & 338' FIML
API #: 15-135-35457-0000

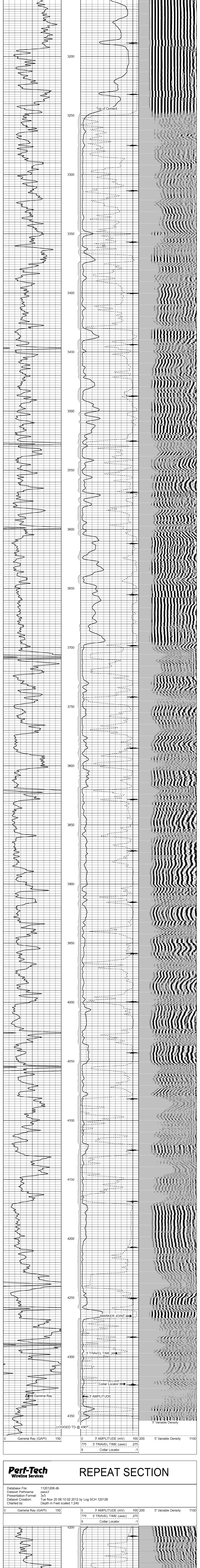
Well MEYER-FREDA UNIT #1
Company AMERICAN WARRIOR, INC.

Field MARGHEIM
County NESS
State KANSAS

Comments: THANKS FOR USING PERF-TECH WIRELINE 785-623-3969 ALEXANDER KS, 4 WEST TO GG RD, 3 SOUTH TO 100 RD, 1 WEST TO FF RD, 1 SOUTH TO 90 RD, EAST INTO

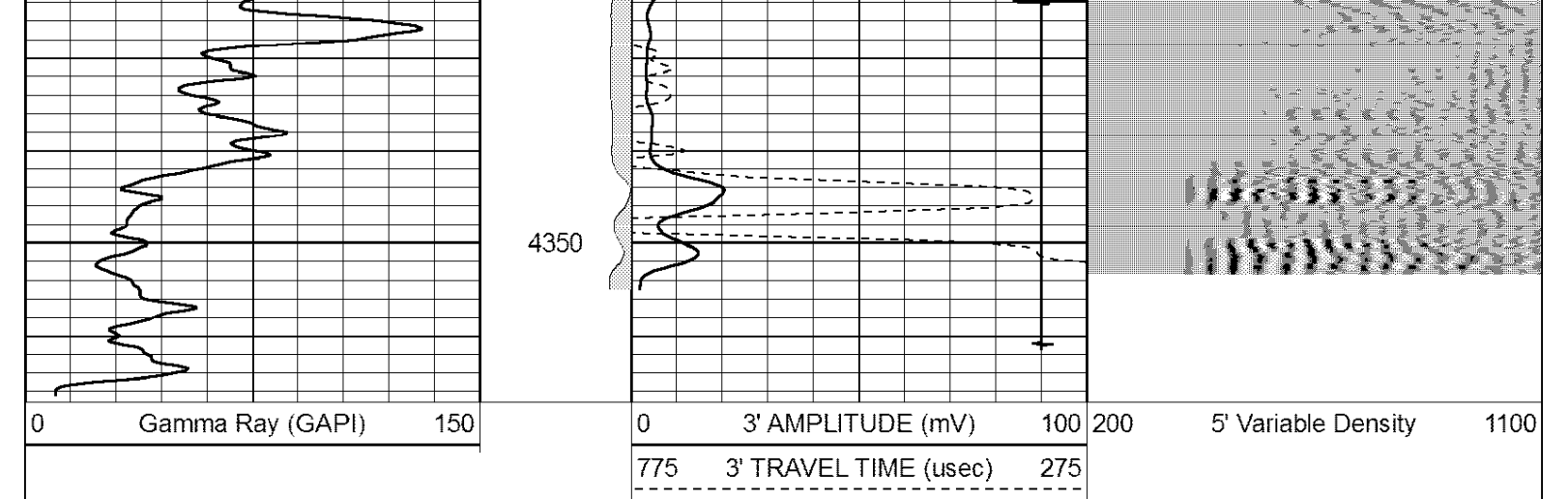
Perf-Tech Wireline Services MAIN PASS

Database File: 11201206.db
Dataset Pathname: pass3
Presentation Format: 3x5
Dataset Creation: Tue Nov 20 08:15:45 2012 by Log SCH 120126
Charted by: Depth in Feet scaled 1:240



Perf-Tech Wireline Services REPEAT SECTION

Database File: 11201206.db
Dataset Pathname: pass2
Presentation Format: 3x5
Dataset Creation: Tue Nov 20 08:10:02 2012 by Log SCH 120126
Charted by: Depth in Feet scaled 1:240



LOGGED TD @ 4367