

**COMPLETION
& PRODUCTION
SERVICES CO.**

**DUAL RECEIVER
CEMENT BOND
LOG**

Company DOWNING-NELSON OIL COMPANY, INC.
Well SEITZ BARNHARDT "C" #2
Field RIDGEWAY
County MCPHERSON
State KANSAS

Company DOWNING-NELSON OIL COMPANY, INC.
Well SEITZ BARNHARDT "C" #2
Field RIDGEWAY
County MCPHERSON State KANSAS

Location: API #: 15-195-22824-00-00
840' FNL & 520' FEL
SEC 34 TWP 12S RGE 21W
Permanent Datum GROUND LEVEL Elevation 2208
Log Measured From KELLY BUSHING 8' A.G.L.
Drilling Measured From KELLY BUSHING
Other Services
PERF
Elevation
K.B. 2216
D.F. 2214
G.L. 2208

Date	12-11-12							
Run Number	ONE							
Depth Driller	3970							
Depth Logger	3874							
Bottom Logged Interval	3872							
Top Log Interval	3050							
Open Hole Size	7-7/8"							
Type Fluid	WATER							
Density / Viscosity								
Max. Recorded Temp.								
Estimated Cement Top								
Time Well Ready								
Time Logger on Bottom								
Equipment Number	0916							
Location	HAYS, KANSAS							
Recorded By	THOMASON							
Witnessed By	TERRY PLESKER							
Borehole Record								
Run Number	Bit	From	To	Size	Weight	From	To	
Casing Record					Tubing Record			
Surface String		Size		Wgt/Ft	Top		Bottom	
Prot. String								
Production String		5-1/2"						
Liner								

<<< Fold Here >>>

All interpretations are opinions based on inferences from electrical or other measurements and we cannot and do not guarantee the accuracy or correctness of any interpretation, and we shall not, except in the case of gross or willful negligence on our part, be liable or responsible for any loss, costs, damages, or expenses incurred or sustained by anyone resulting from any interpretation made by any of our officers, agents or employees. These interpretations are also subject to our general terms and conditions set out in our current Price Schedule.

Comments

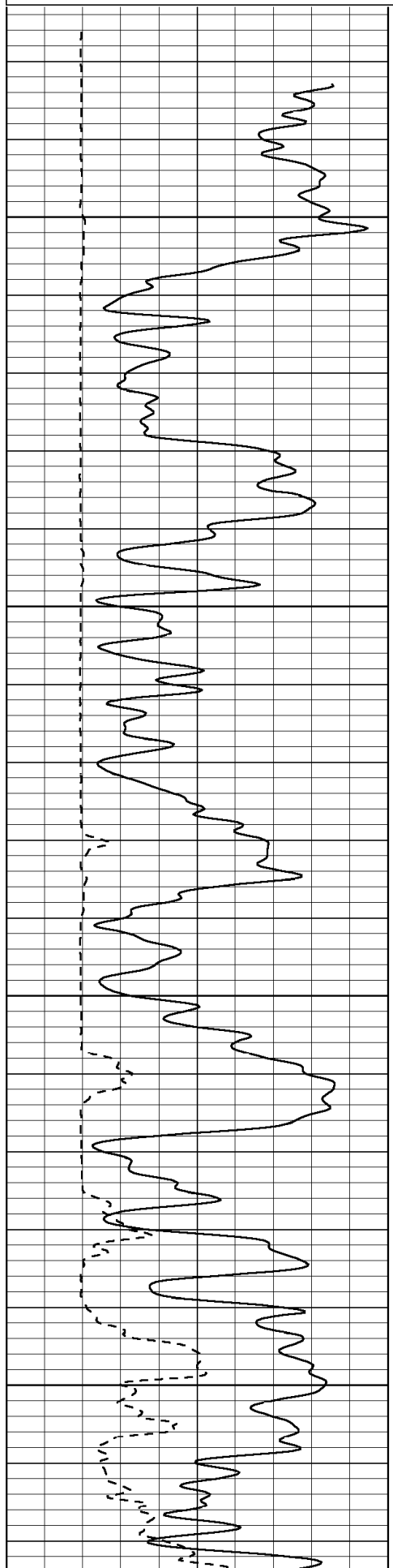
THANK YOU FOR USING NABORS COMPLETION & PRODUCTION SERVICES
DIRECTIONS
I-70 & RIGA EXIT - 1/2 NORTH - 1 EAST - SOUTH & WEST INTO

Database File: 010359grb.db
Dataset Pathname: pass4M
Presentation Format: dcbl02
Dataset Creation: Tue Dec 11 16:25:00 2012
Charted by: Depth in Feet scaled 1:240

0	Gamma Ray (GAPI)	150
200	5' Travel Time (usec)	1000

0	3' Amplitude (mV)	100
9	CCL	-1
0	Amplified Amplitude (mV)	20

200	5FT VDL	1000
-----	---------	------

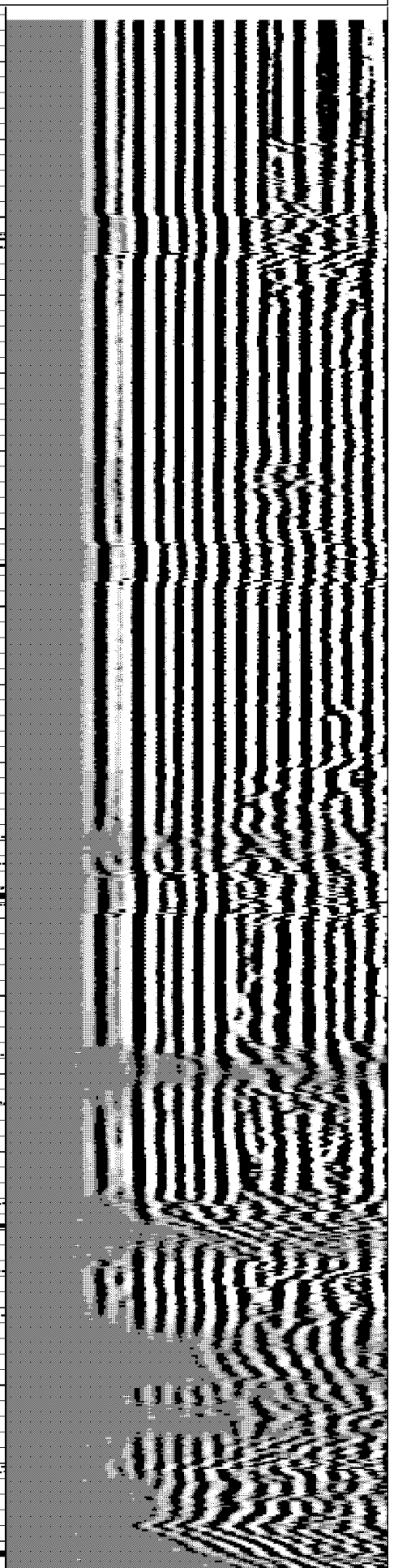
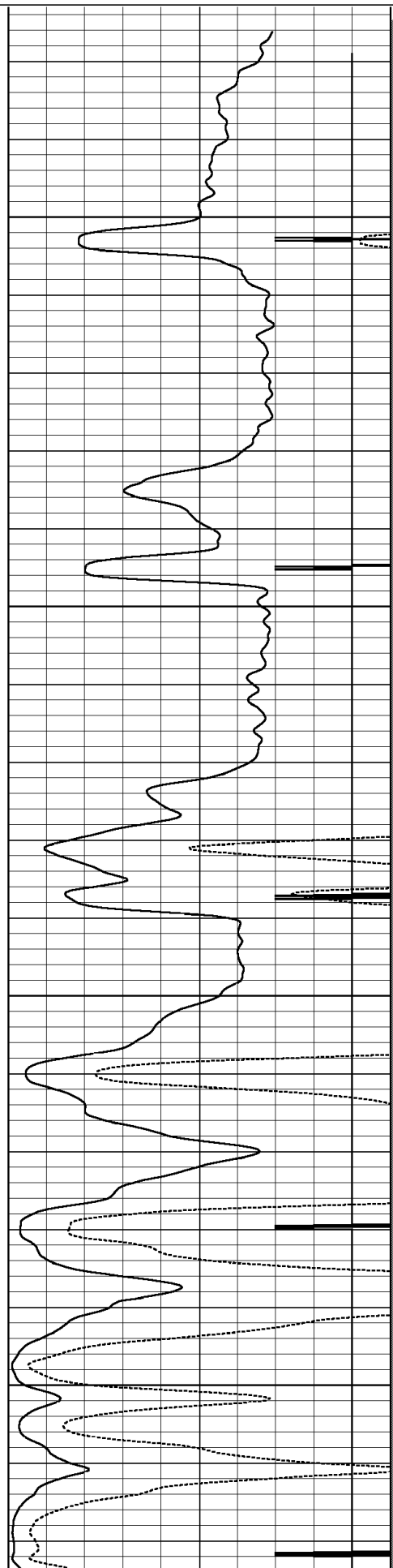


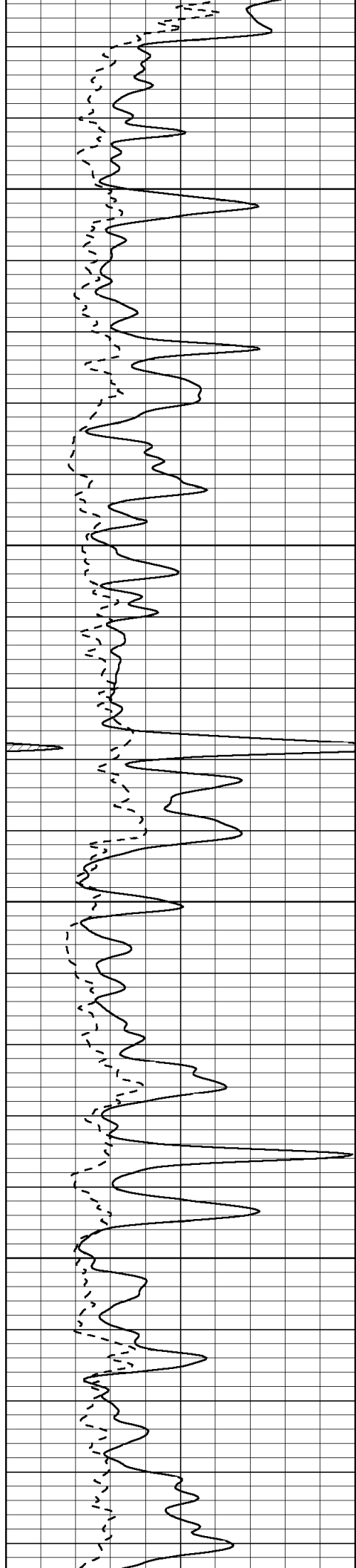
3050

3100

3150

3200



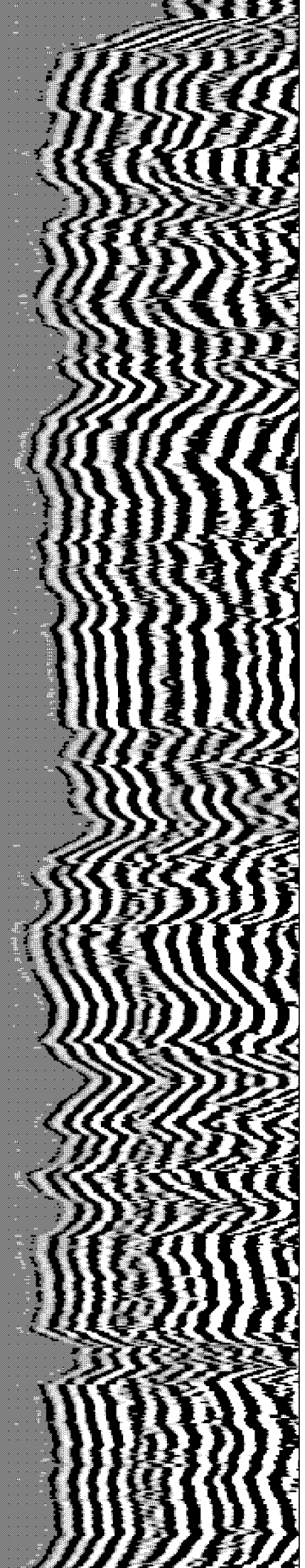
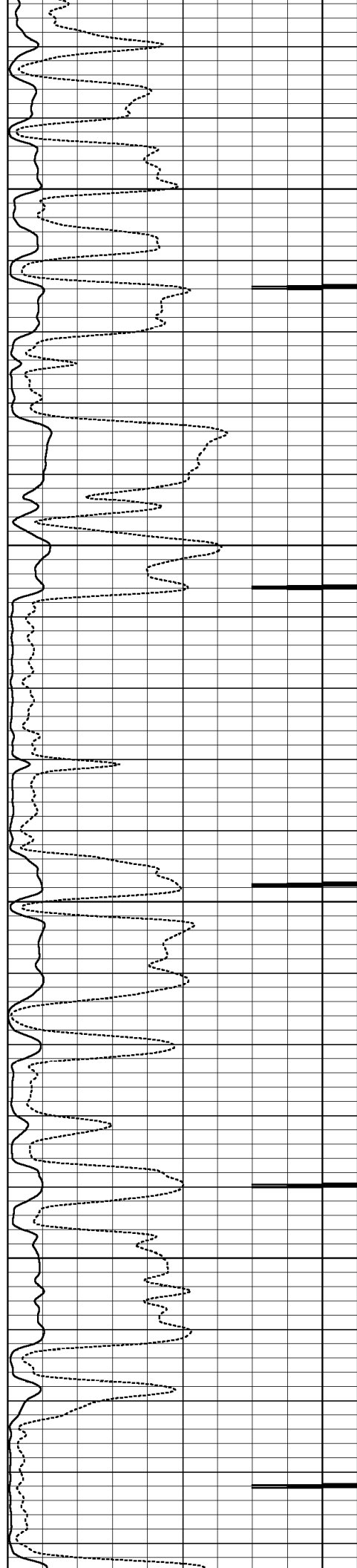


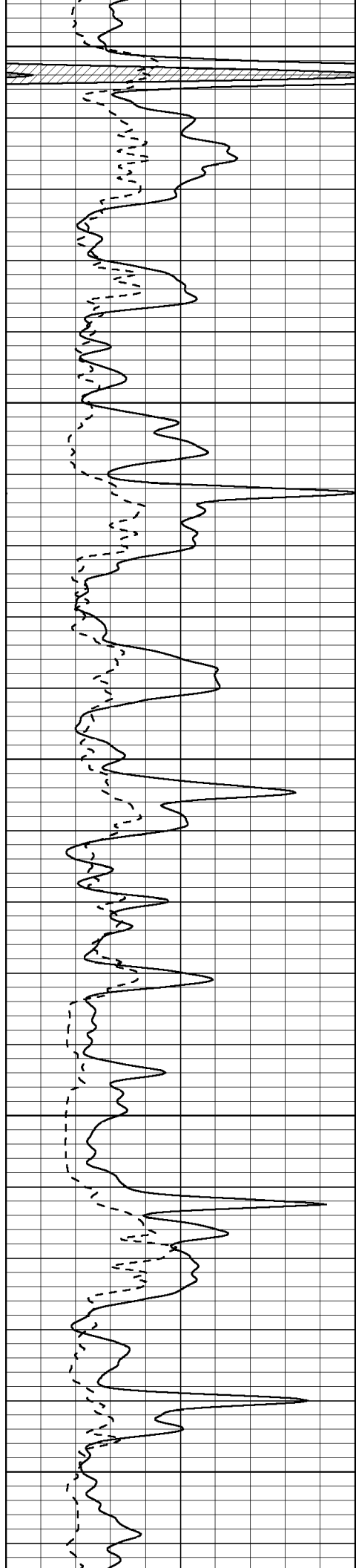
3250

3300

3350

3400





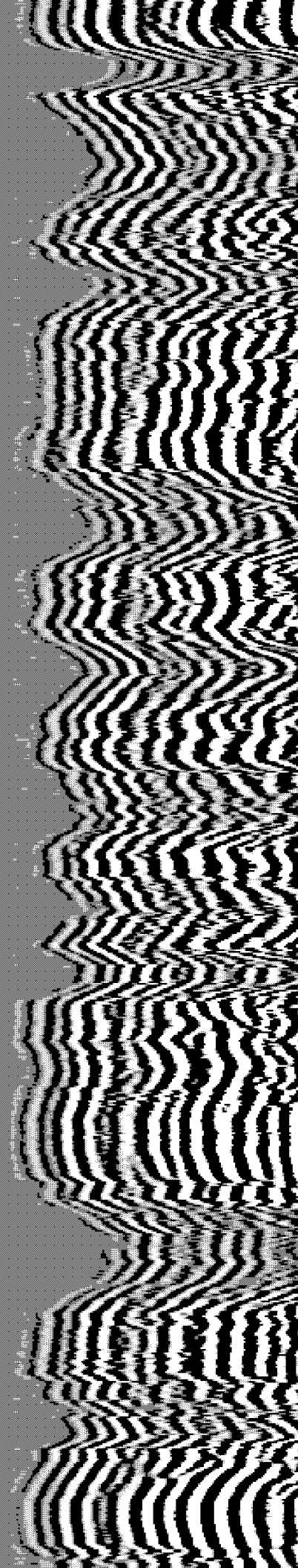
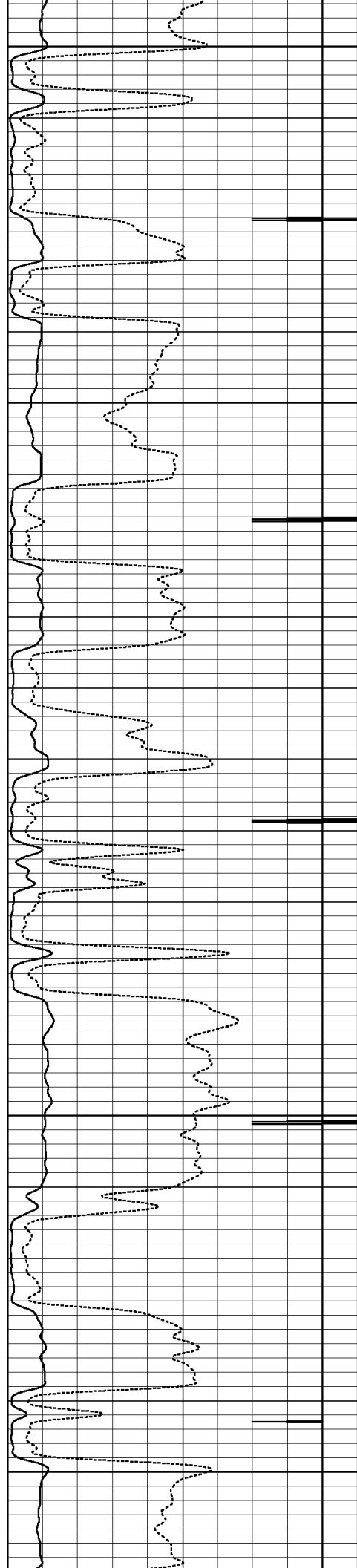
3450

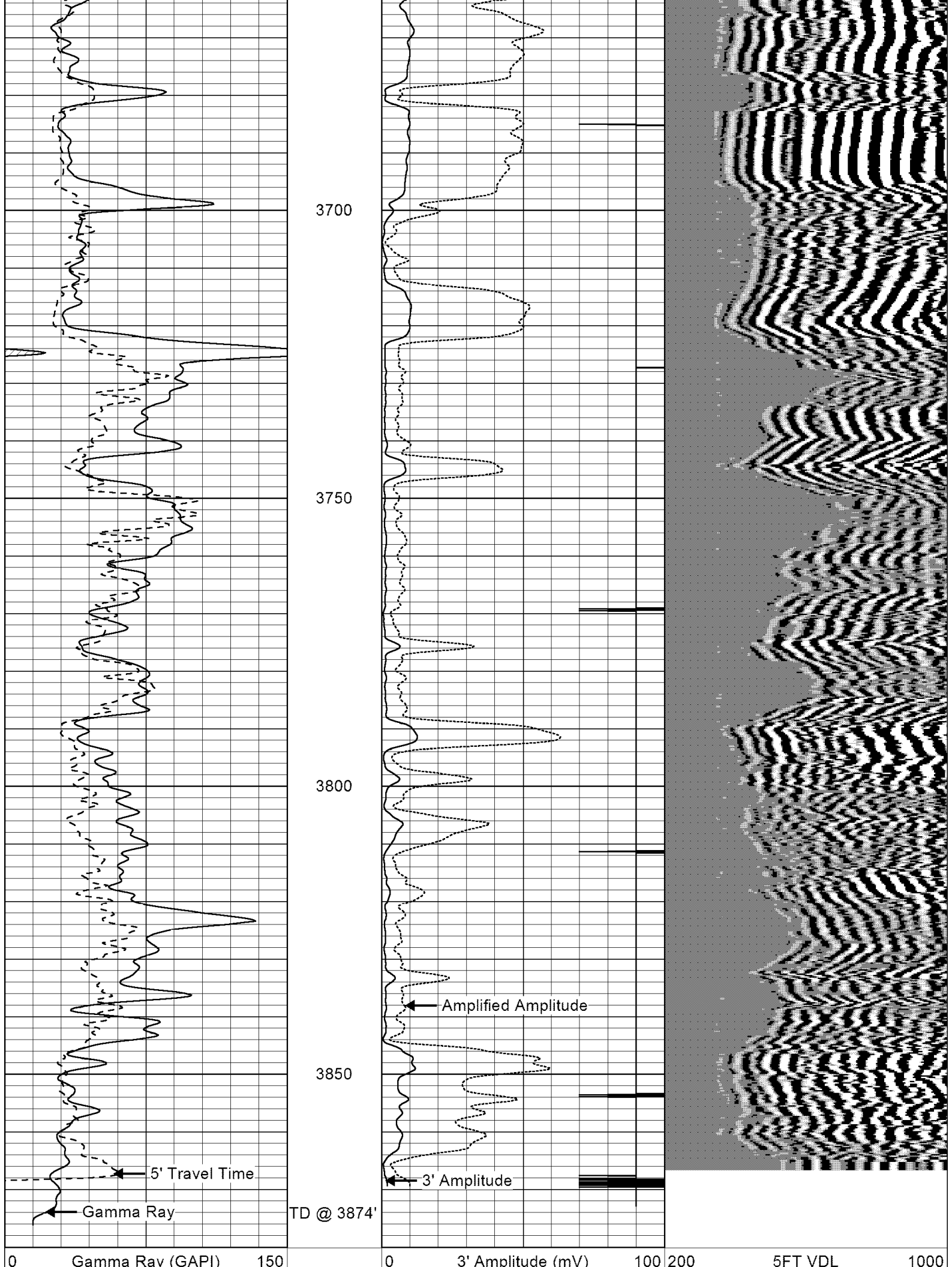
3500

3550

3600

3650





200	5' Travel Time (usec)	1000

9	CCL	-1
0	Amplified Amplitude (mV)	20
