



Pioneer Energy Services

Microresistivity Log

15-051-26,426-00-00

API No.

Company **E&B Natural Resources Management**
 Well **Marshal A No. 43WD**
 Field **Bemis-Shutts**
 County **Eljis** State **Kansas**

Location
SW NE NE NW/4
350' FNL & 2,290' FWL

Sec: **31** Twp: **11S** Rge: **17W**

Other Services
 CNL/CDL
 DIL

Permanent Datum **Ground Level** Elevation **2122**
 Log Measured From **Kelly Bushing** **5** Ft. Above Perm. Datum
 Drilling Measured From **Kelly Bushing**

Elevation
 K.B. 2127
 D.F. 2122
 G.L. 2122

Date	12/14/2012
Run Number	Two
Depth Driller	3745
Depth Logger	3742
Bottom Logged Interval	3741
Top Log Interval	3000
Casing Driller	13.375 @ 290
Casing Logger	290
Bit Size	9.875
Type Fluid in Hole	Chemical
Salinity, ppm CL	4000
Density / Viscosity	8.5 75
pH / Fluid Loss	11.0 5.6
Source of Sample	Flowline
Rm @ Meas. Temp	.85 @ 68
Rmf @ Meas. Temp	.64 @ 68
Rmc @ Meas. Temp	1.15 @ 68
Source of Rmf / Rmc	Charts
Rm @ BHT	.51 @ 113
Operating Rig Time	4 Hours
Max Rec. Temp. F	113
Equipment Number	108
Location	Hays
Recorded By	J. Long
Witnessed By	Bob O'Dell

<<< Fold Here >>>

All interpretations are opinions based on inferences from electrical or other measurements and we cannot and do not guarantee the accuracy or correctness of any interpretation, and we shall not, except in the case of gross or willful negligence on our part, be liable or responsible for any loss, costs, damages, or expenses incurred or sustained by anyone resulting from any interpretation made by any of our officers, agents or employees. These interpretations are also subject to our general terms and conditions set out in our current Price Schedule.

Comments

Thank you for using Pioneer Energy Services
www.pioneerres.com
 785 625 3858

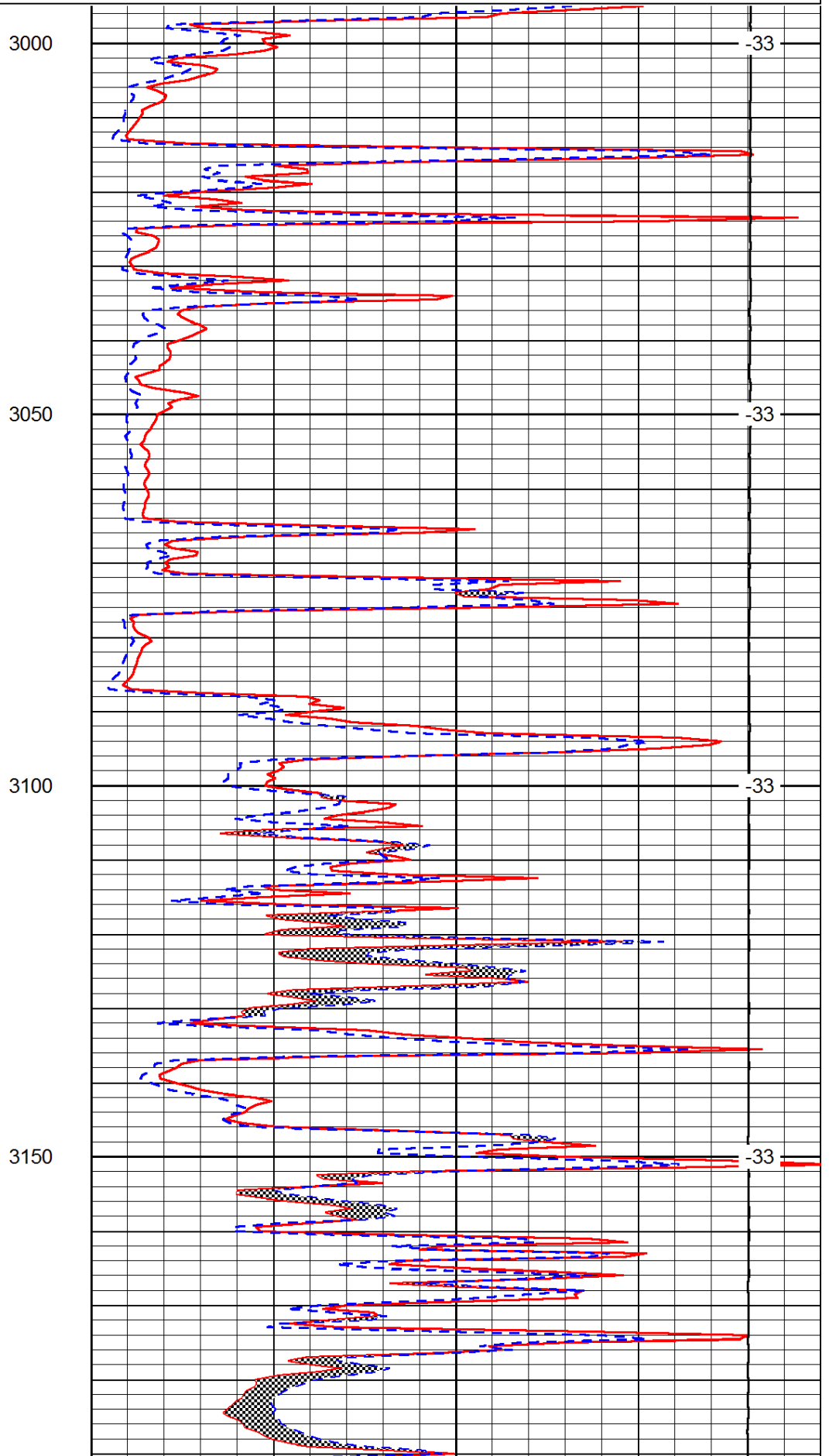
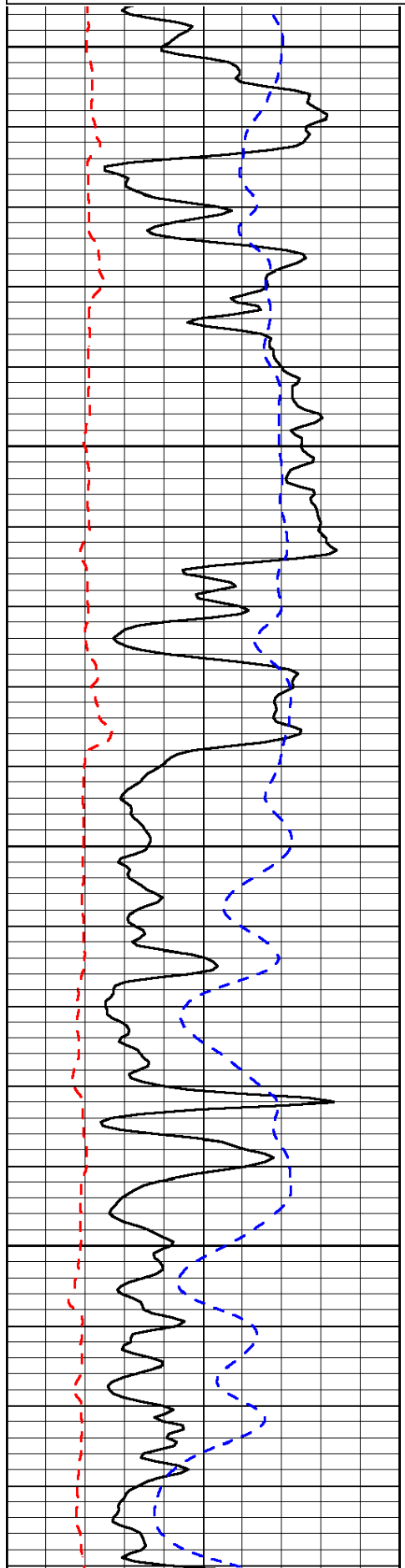
Hays, North to Buckeye Road, 3 East to 180th Road, 3 North, 1/2 East, 3/4 North Into

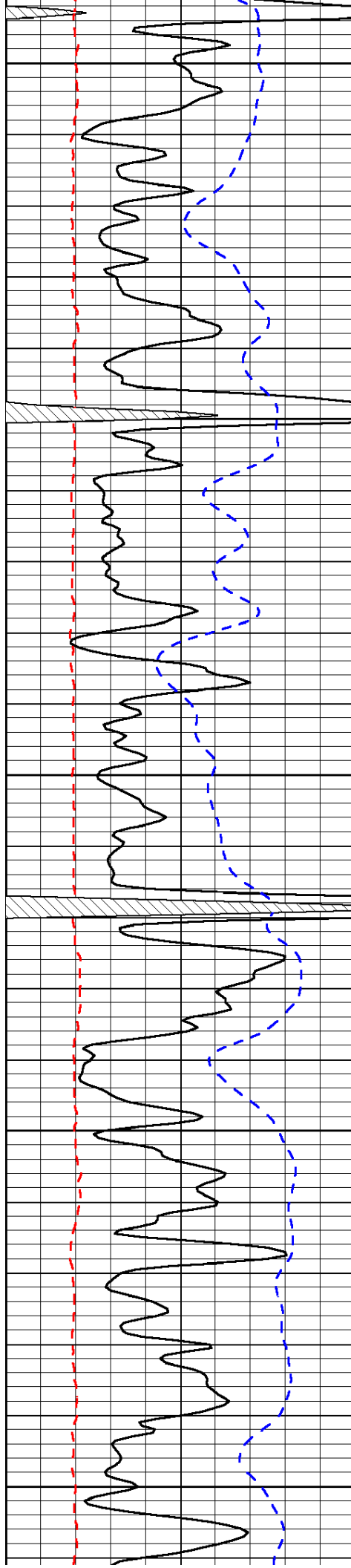
Database File: c:\warrior\data\e&b natural res_marshall a #43wd\e&b_marshall_a_43wdhd.db
 Dataset Pathname: dil/ebstck
 Presentation Format: micro
 Dataset Creation: Fri Dec 14 18:18:48 2012
 Charted by: Depth in Feet scaled 1:240

0	Gamma Ray	150
8	Micro Log Caliper (GAPI)	18
-200	SP (mV)	0

0	Micro Inverse 1 X 1	40
0	Micro Normal 2"	40
15000	Line Weight	0

LSPD





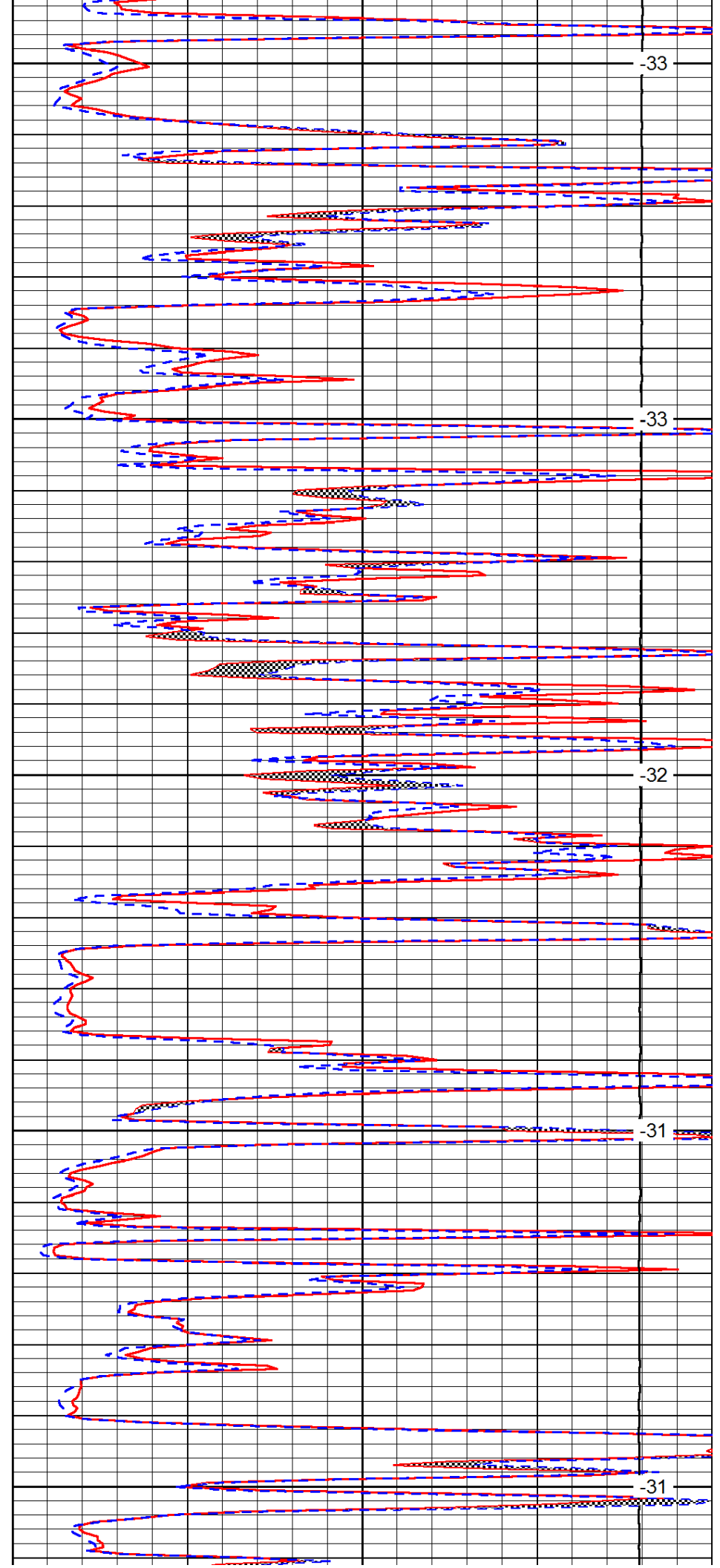
3200

3250

3300

3350

3400



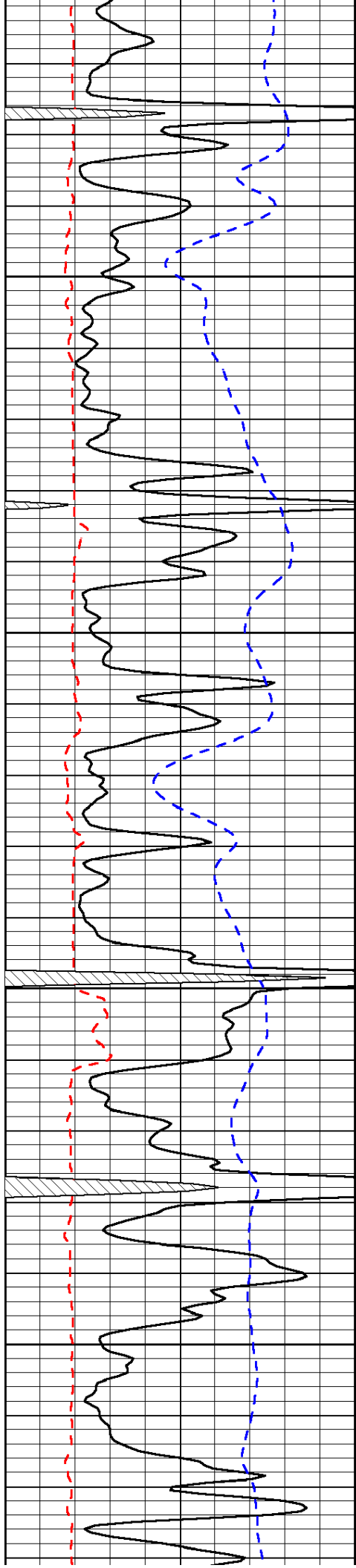
-33

-33

-32

-31

-31

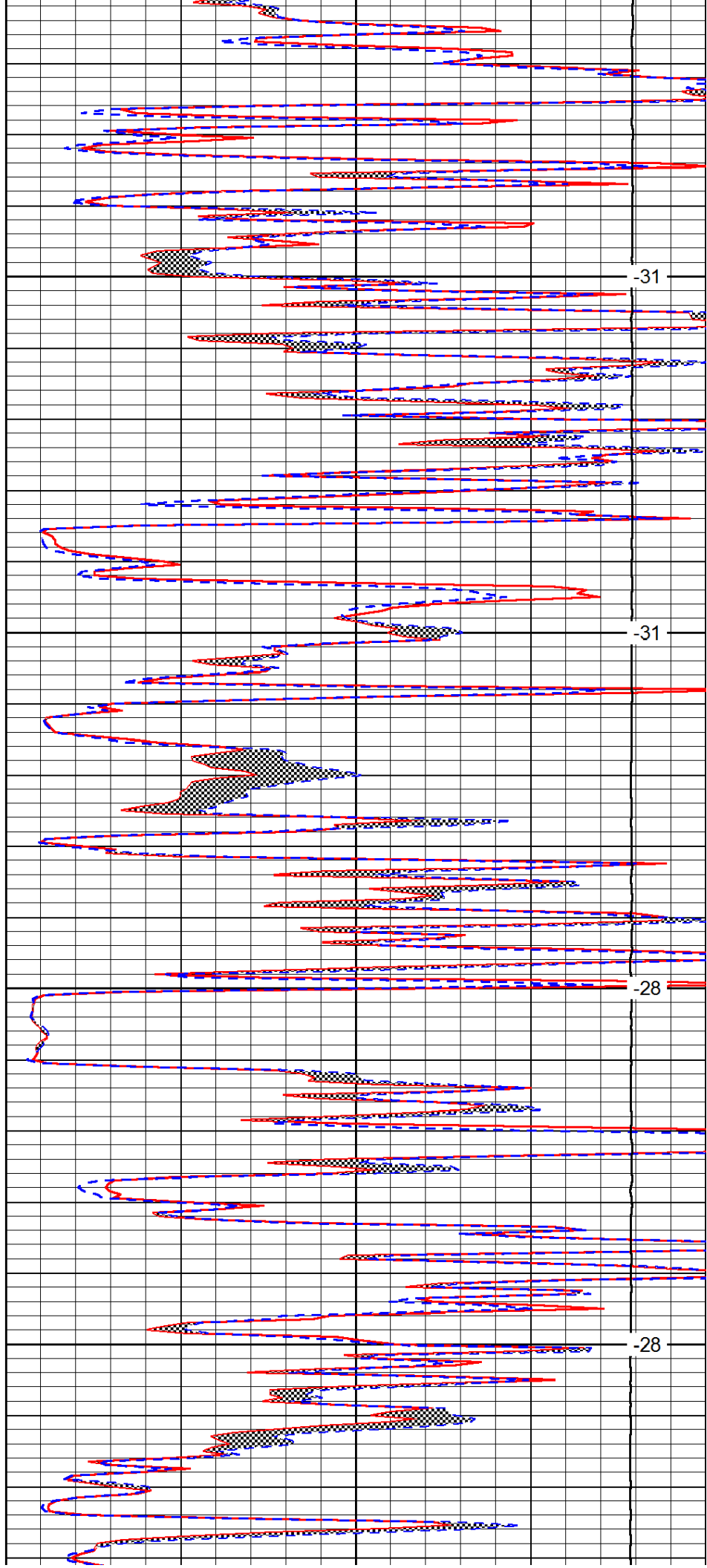


3450

3500

3550

3600

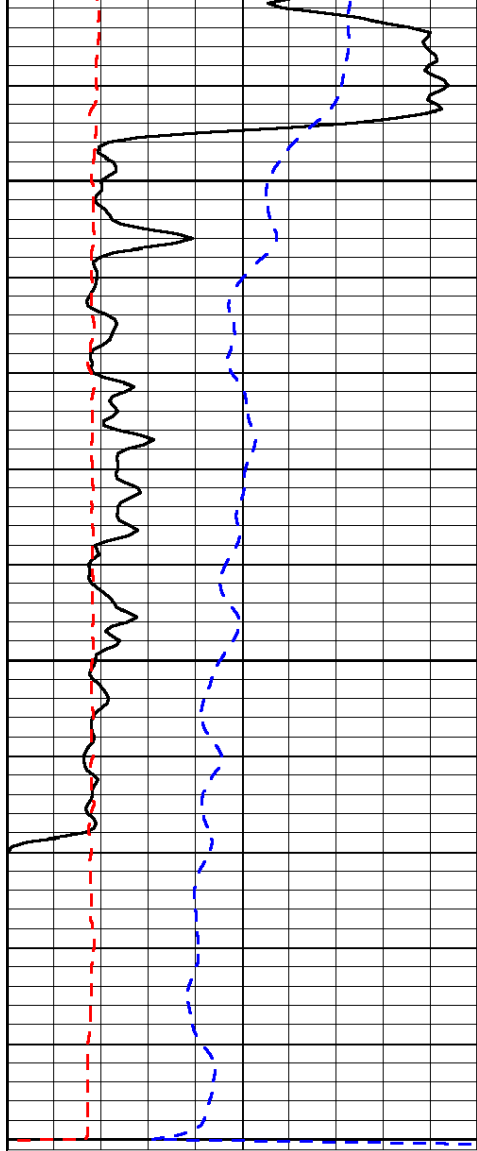


-31

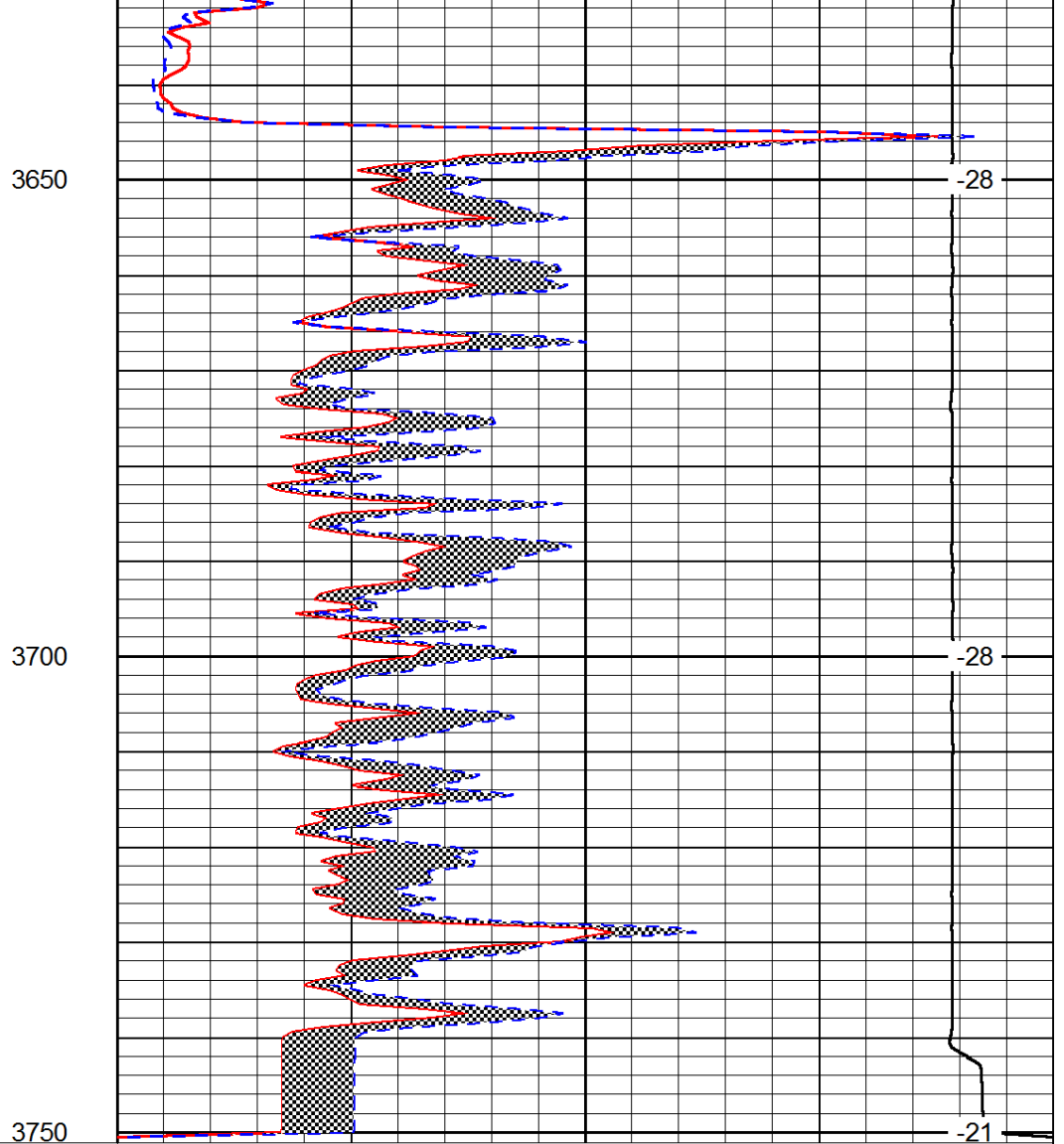
-31

-28

-28



0	Gamma Ray	150
8	Micro Log Caliper (GAPI)	18
-200	SP (mV)	0



0	Micro Inverse 1 X 1	40
0	Micro Normal 2"	40
15000	Line Weight	0

LSPD