



Pioneer Energy Services

Microresistivity Log

15-135-25,371-00-00

API No.

Company **L. D. Drilling, Inc.**
 Well **Stenzel Partnership #2-20**
 Field **L.T.P. North**
 County **Ness** State **Kansas**

Location **1650' FNL & 2290' FEL**

Sec: **20** Twp: **18 S** Rge: **24 W**

Other Services
CNL/CDL
DIL

Permanent Datum **Ground Level** Elevation **2293**
 Log Measured From **Kelly Bushing** **5** Ft. Above Perm. Datum
 Drilling Measured From **Kelly Bushing**

Elevation
K.B. **2298**
D.F. **2293**
G.L. **2293**

Date	11/15/2012
Run Number	Two
Depth Driller	4400
Depth Logger	4402
Bottom Logged Interval	4401
Top Log Interval	3500
Casing Driller	8.625 @ 387
Casing Logger	385
Bit Size	7.875
Type Fluid in Hole	Chemical
Salinity, ppm CL	5000
Density / Viscosity	9.2 49
pH / Fluid Loss	9.5 10.0
Source of Sample	Flowline
Rm @ Meas. Temp	.45 @ 70
Rmf @ Meas. Temp	.34 @ 70
Rmc @ Meas. Temp	.61 @ 70
Source of Rmf / Rmc	Charts
Rm @ BHT	.26 @ 120
Operating Rig Time	4 Hours
Max Rec. Temp. F	120
Equipment Number	108
Location	Hays
Recorded By	D. Martin
Witnessed By	Kim Shoemaker

<<< Fold Here >>>

All interpretations are opinions based on inferences from electrical or other measurements and we cannot and do not guarantee the accuracy or correctness of any interpretation, and we shall not, except in the case of gross or willful negligence on our part, be liable or responsible for any loss, costs, damages, or expenses incurred or sustained by anyone resulting from any interpretation made by any of our officers, agents or employees. These interpretations are also subject to our general terms and conditions set out in our current Price Schedule.

Comments

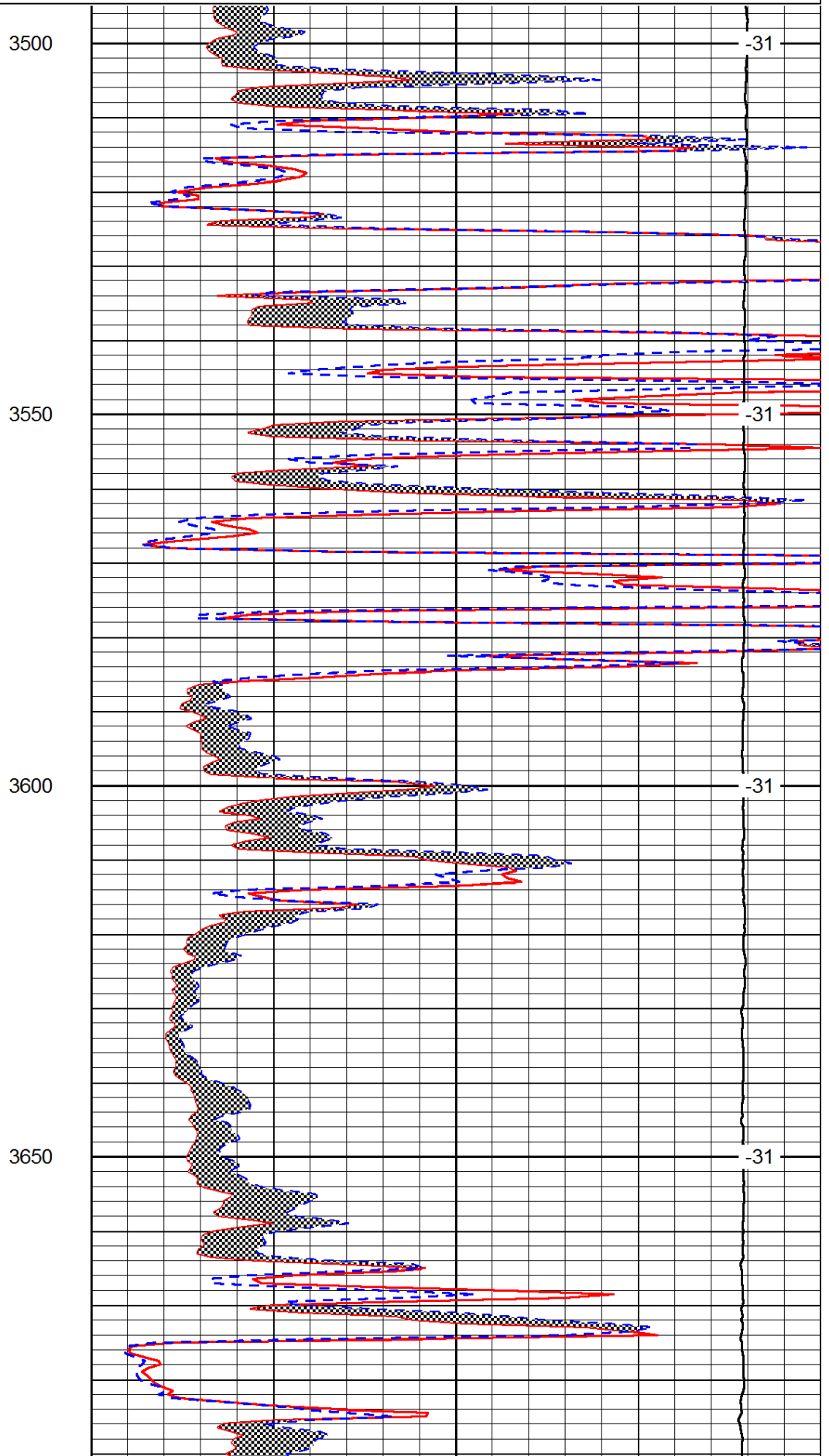
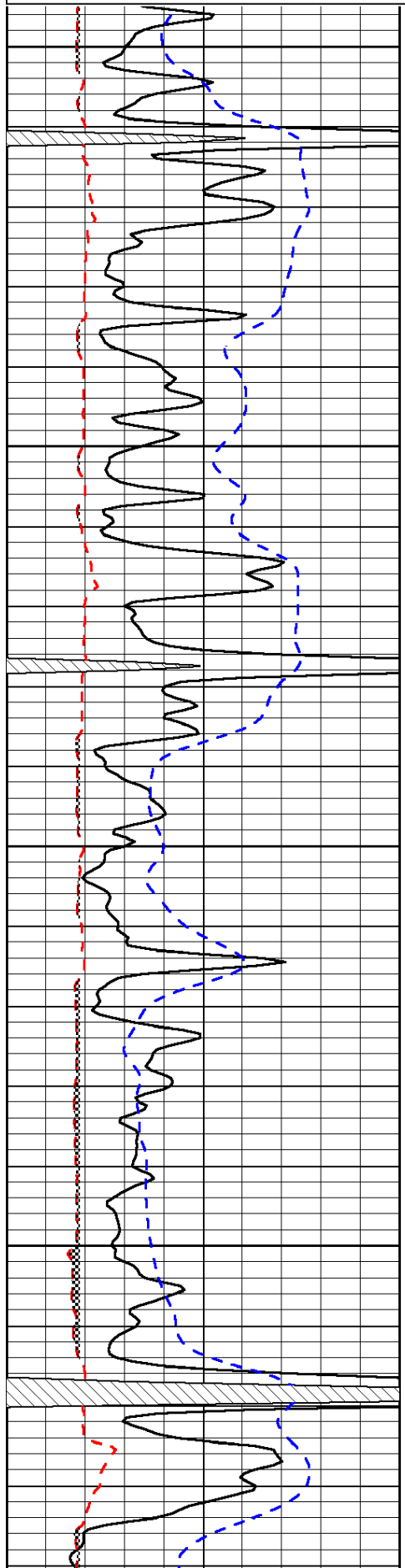
Thank you for using Pioneer Energy Services
 www.pioneerres.com
 785 625 3858
 Ness City, KS
 4 1/2 W to N Rd., 1 1/2 N,
 W Into

Database File: c:\warrior\data\ld drilling_stenzel partnership #2-20\ldhd.db
 Dataset Pathname: DIL\ldstk
 Presentation Format: micro
 Dataset Creation: Thu Nov 15 08:58:47 2012
 Charted by: Depth in Feet scaled 1:240

0	Gamma Ray	150
6	Micro Log Caliper (GAPI)	16
-200	SP (mV)	0

0	Micro Inverse 1 X 1	40
0	Micro Normal 2"	40
15000	Line Weight	0

LSPD



3500

-31

3550

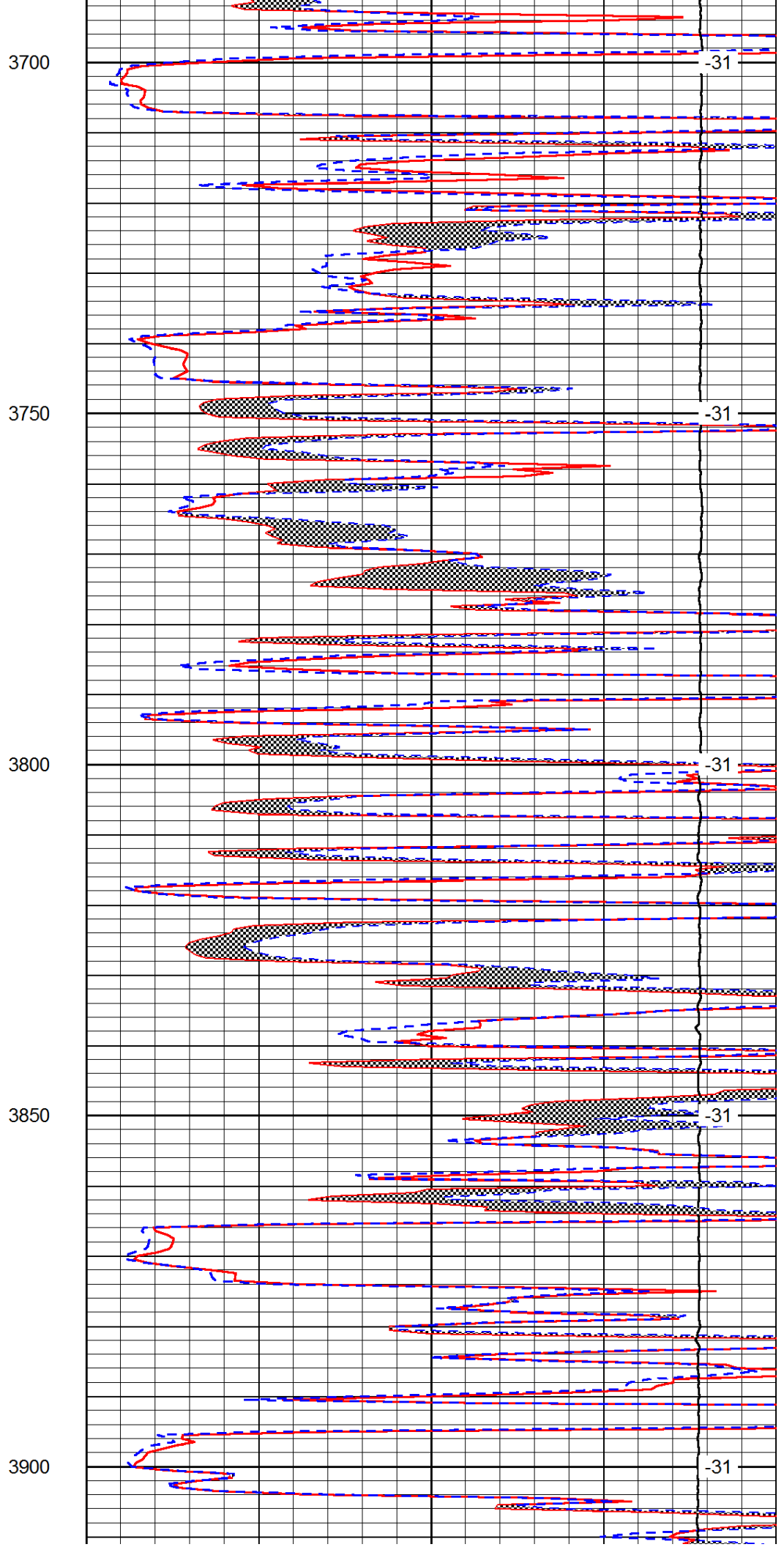
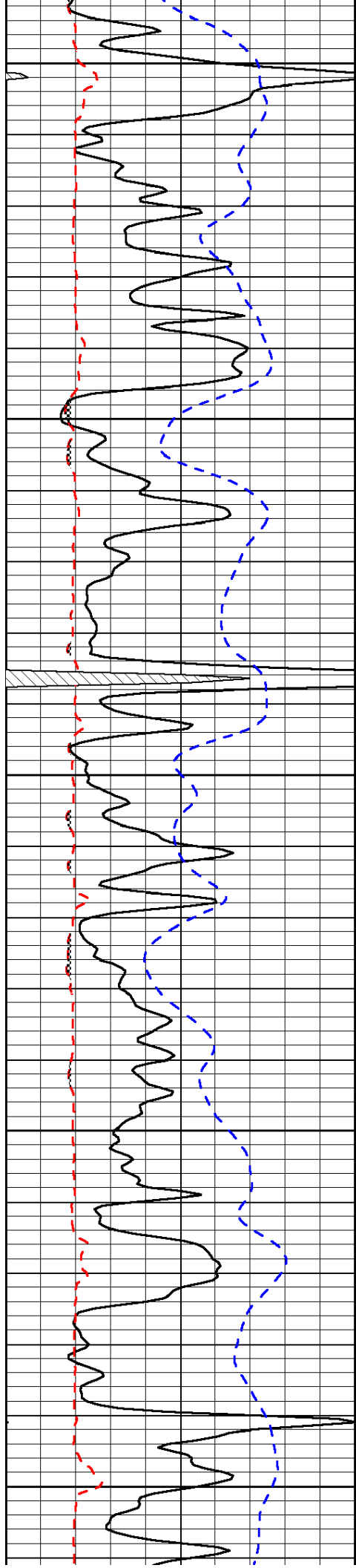
-31

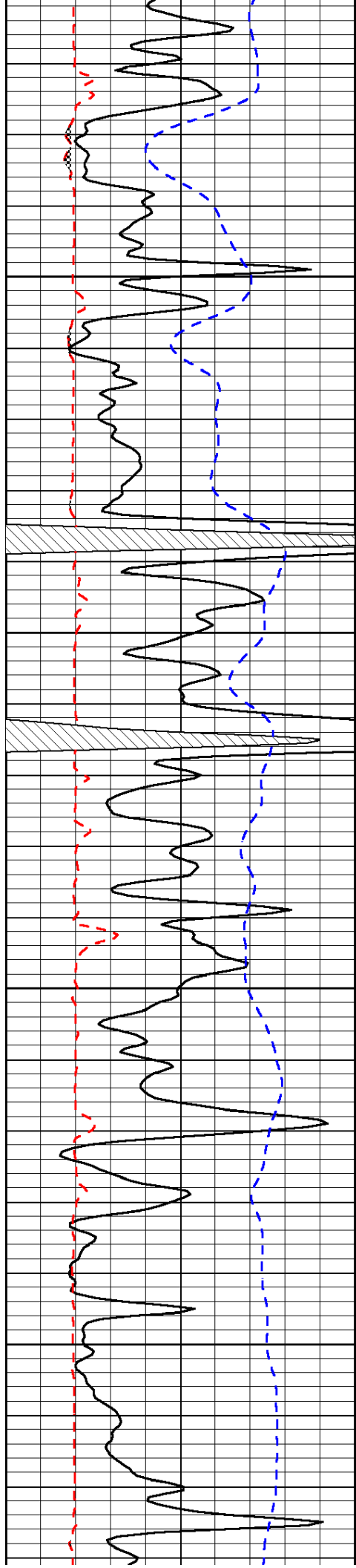
3600

-31

3650

-31



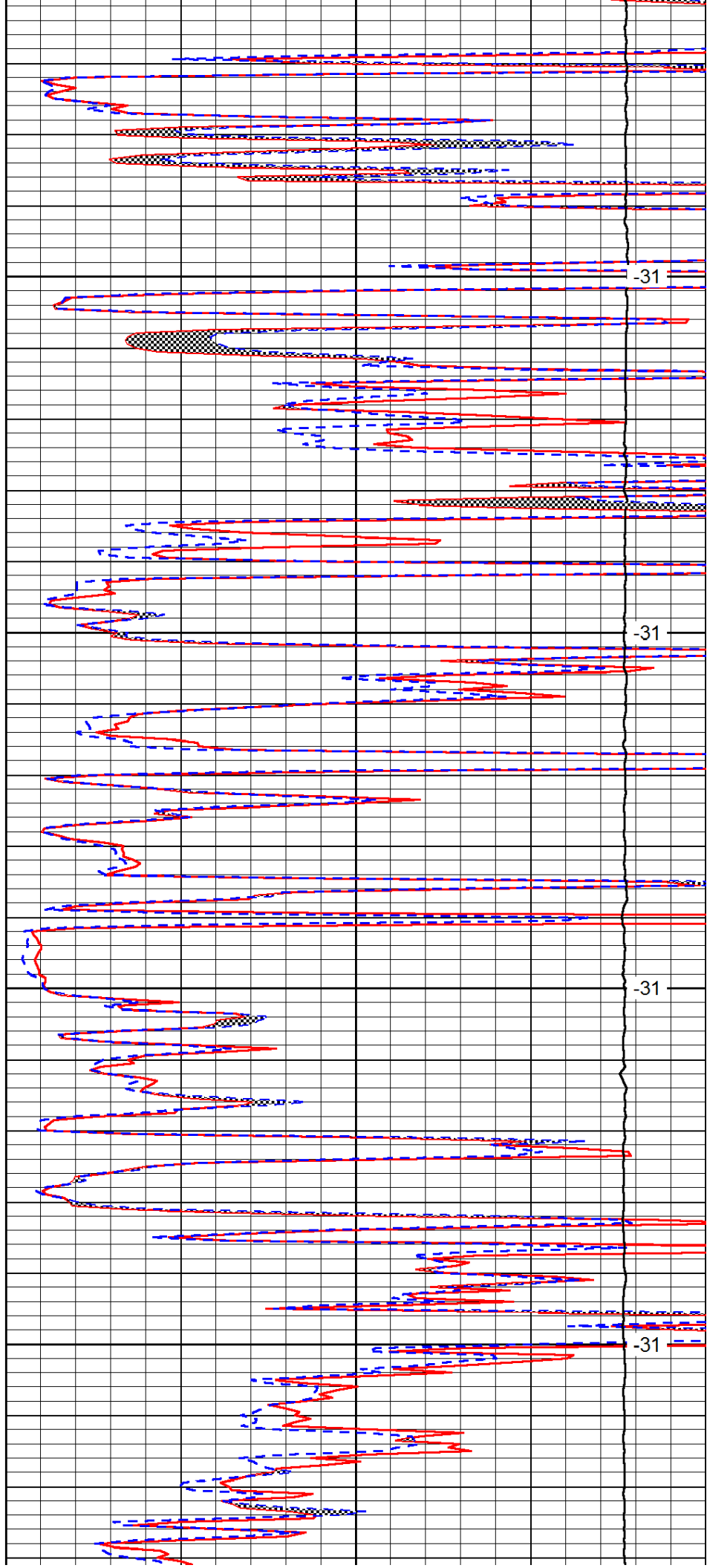


3950

4000

4050

4100

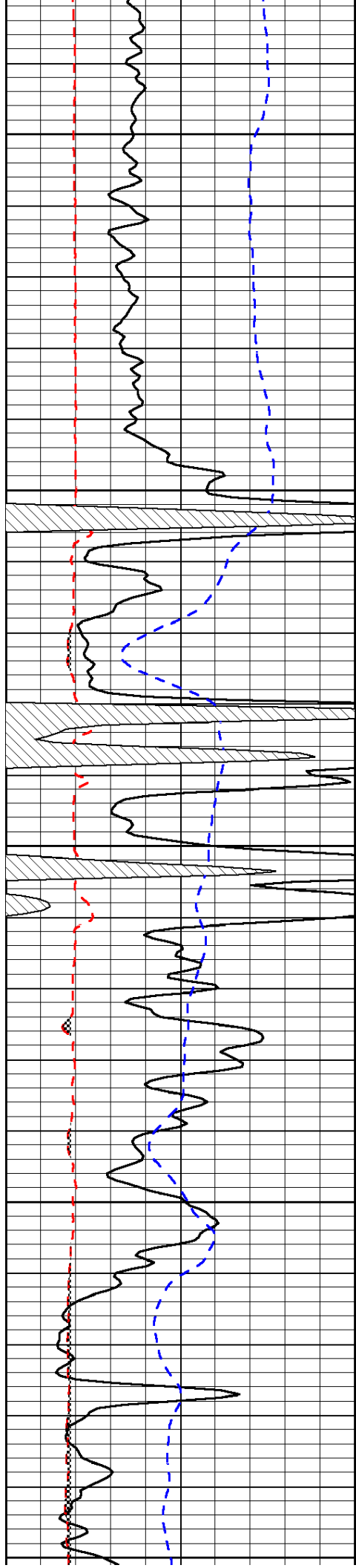


-31

-31

-31

-31



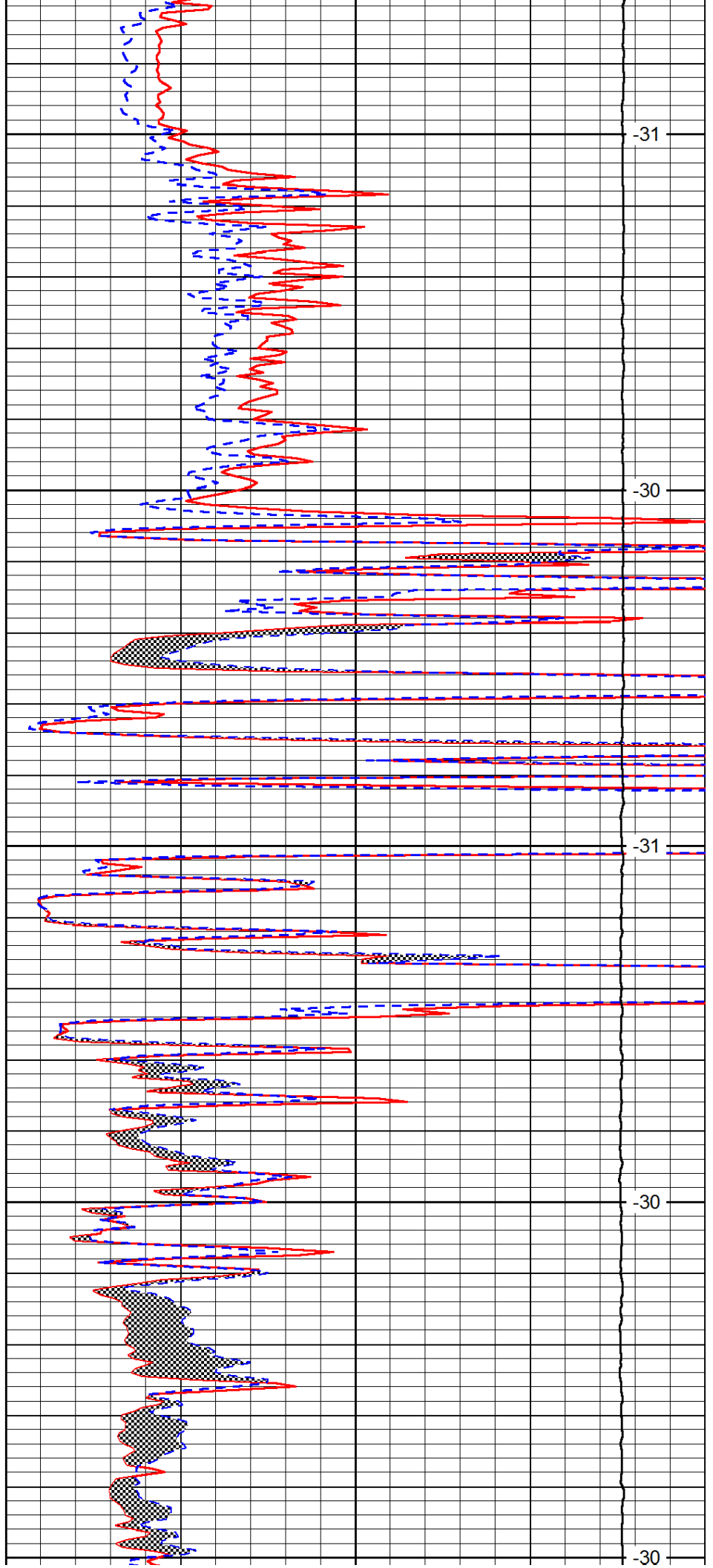
4150

4200

4250

4300

4350



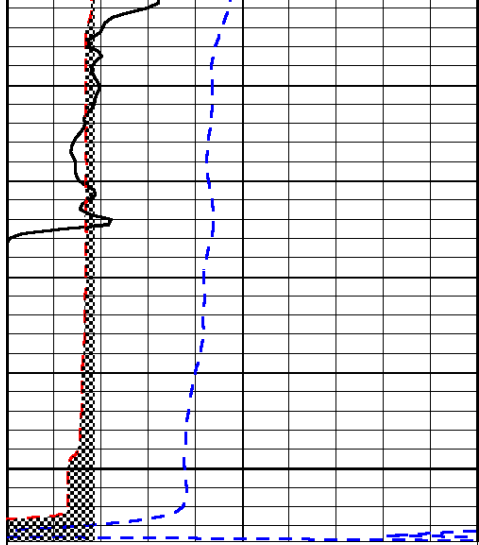
-31

-30

-31

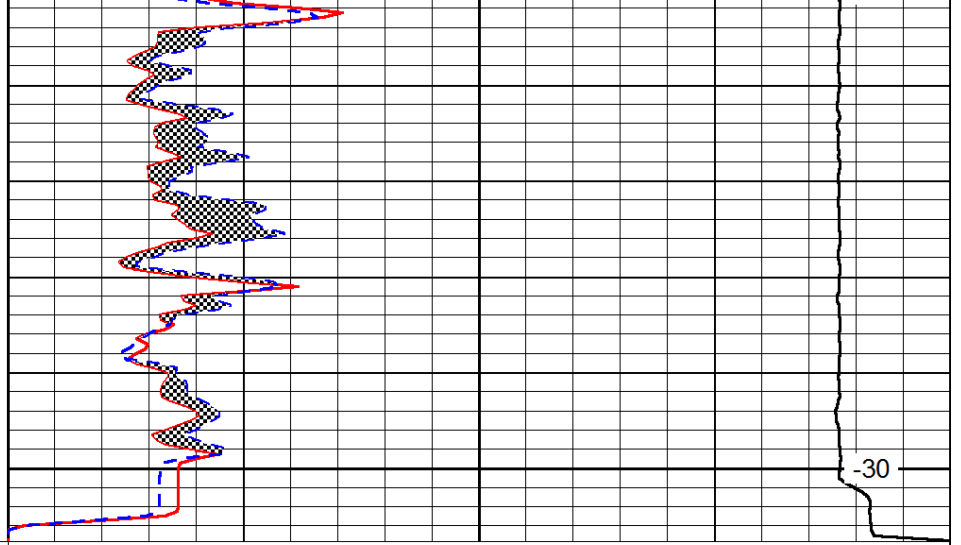
-30

-31



0	Gamma Ray	150
6	Micro Log Caliper (GAPI)	16
-200	SP (mV)	0

4400



0	Micro Inverse 1 X 1	40
0	Micro Normal 2"	40
15000	Line Weight	0

-30

LSPD