



Pioneer Energy Services

Dual Compensated Porosity Log

15-135-25,371-00-00

API No.

Company **L. D. Drilling, Inc.**
 Well **Stenzel Partnership #2-20**
 Field **L.T.P. North**
 County **Ness** State **Kansas**

Location **1650' FNL & 2290' FEL**
 Sec: **20** Twp: **18 S** Rge: **24 W**

Other Services
 DIL
 MEL

Permanent Datum **Ground Level** Elevation **2293**
 Log Measured From **Kelly Bushing** **5** Ft. Above Perm. Datum
 Drilling Measured From **Kelly Bushing**

Elevation
 K.B. **2298**
 D.F. **2293**
 G.L. **2293**

Date	11/15/2012
Run Number	One
Type Log	CNL / CDL
Depth Driller	4400
Depth Logger	4402
Bottom Logged Interval	4381
Top Logged Interval	3500
Type Fluid In Hole	Chemical
Salinity, PPM CL	5000
Density	9.2
Level	Full
Max. Rec. Temp. F	120
Operating Rig Time	4 Hours
Equipment -- Location	108 Hays
Recorded By	D. Martin
Witnessed By	Kim Shoemaker

Borehole Record		Casing Record					
Run No.	Bit	From	To	Size	Wgt.	From	To
1	12.25	00	387	8.625	24#	00	387
2	7.875	387	4400				

<<< Fold Here >>>

All interpretations are opinions based on inferences from electrical or other measurements and we cannot and do not guarantee the accuracy or correctness of any interpretation, and we shall not, except in the case of gross or willful negligence on our part, be liable or responsible for any loss, costs, damages, or expenses incurred or sustained by anyone resulting from any interpretation made by any of our officers, agents or employees. These interpretations are also subject to our general terms and conditions set out in our current Price Schedule.

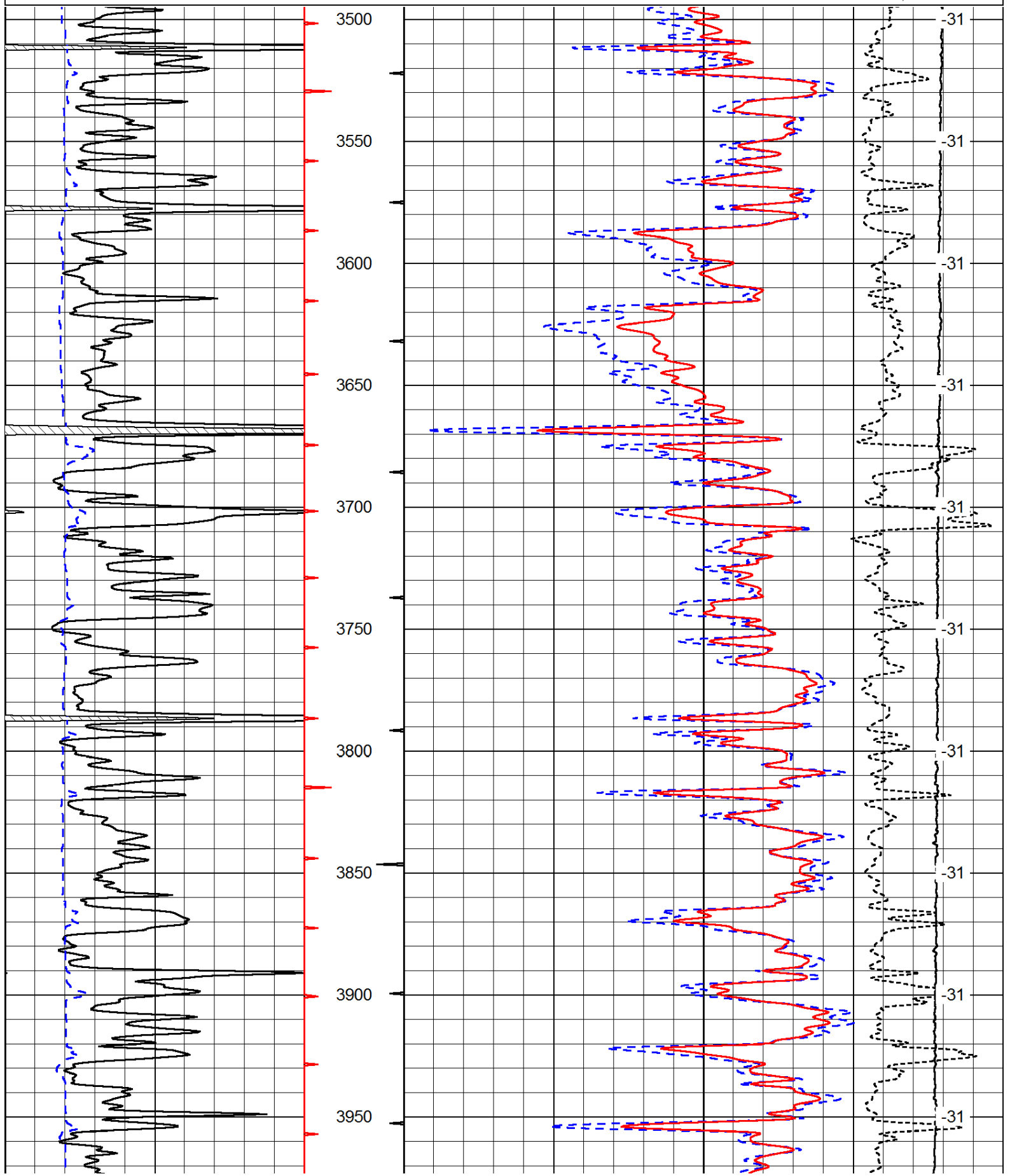
Comments

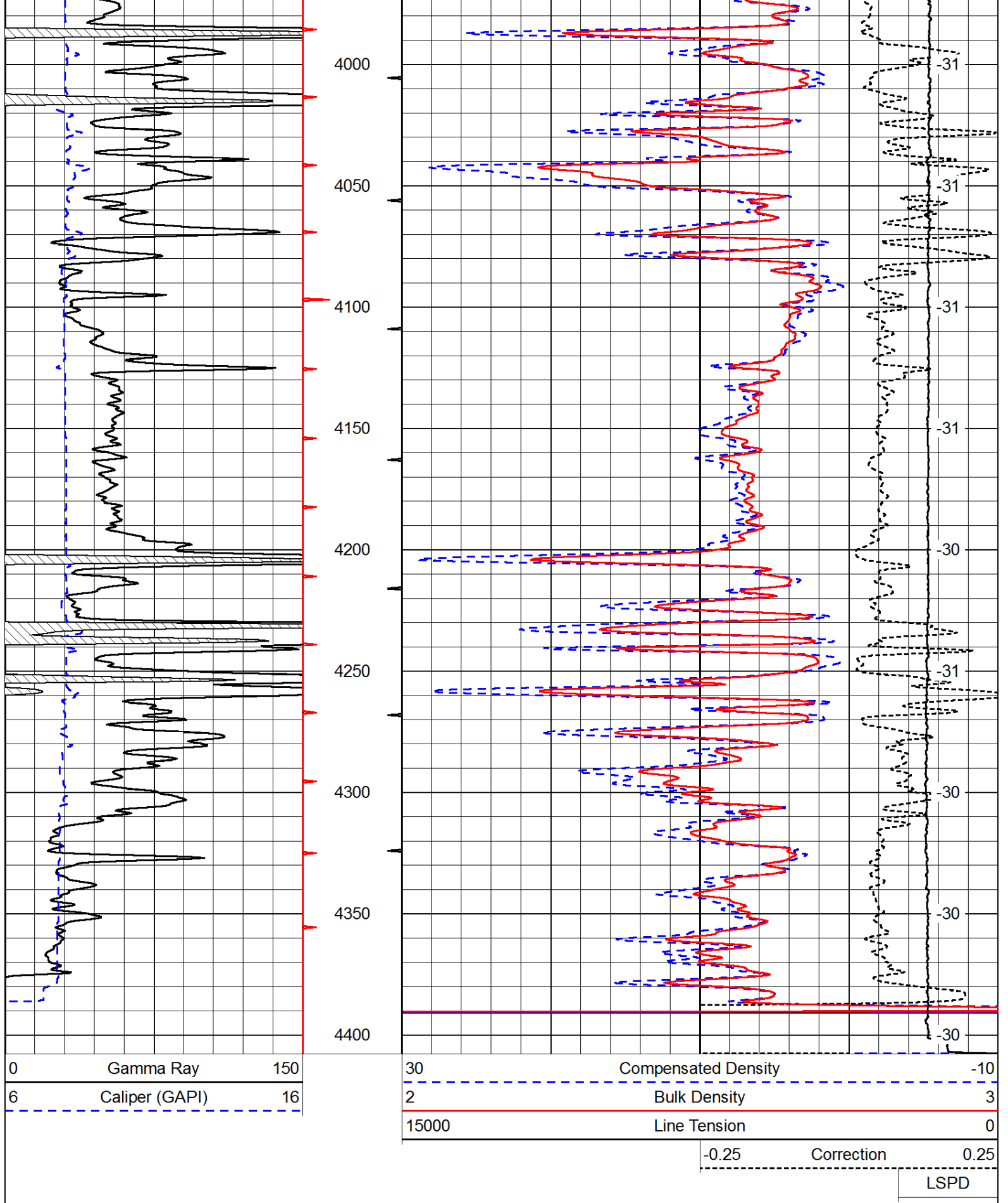
Thank you for using Pioneer Energy Services
 www.pioneerenergy.com
 785 625 3858
 Ness City, KS
 4 1/2 W to N Rd., 1 1/2 N,
 W Into

Database File: c:\warrior\data\ld drilling_stenzel partnership #2-20\ldhd.db
 Dataset Pathname: DIL\ldstk
 Presentation Format: cdl
 Dataset Creation: Thu Nov 15 08:58:47 2012
 Charted by: Depth in Feet scaled 1:600

0	Gamma Ray	150
6	Caliper (GAPI)	16

30	Compensated Density	-10
2	Bulk Density	3
15000	Line Tension	0
-0.25	Correction	0.25
LSPD		





Database File: c:\warrior\data\ld drilling_stenzel partnership #2-20\ldhd.db
 Dataset Pathname: DIL\ldstk
 Presentation Format: cndlspec
 Dataset Creation: Thu Nov 15 08:58:47 2012
 Charted by: Depth in Feet scaled 1:240

0	Gamma Ray	150
6	Caliper (GAPI)	16

30	Compensated Neutron (Limestone)	-10
30	Compensated Density (Limestone)	-10
15000	Line Tension	0
-0.25	Correction	0.25
LSPD		

