



**COMPLETION
& PRODUCTION
SERVICES CO.**

**MICRO
LOG**

Company DOWNING NELSON OIL COMPANY, INC.
Well SEITZ BARNHARDT "C" #2
Field RIDGEWAY
County TREGO
State KANSAS

Company DOWNING NELSON OIL COMPANY, INC.
Well SEITZ BARNHARDT "C" #2
Field RIDGEWAY
County TREGO State KANSAS

Location: API # : 15-195-22824-0000
840' FNL & 520' FEL
SEC 34 TWP 12S RGE 21W
Permanent Datum GROUND LEVEL Elevation 2208
Log Measured From KELLY BUSHING 8' A.G.L.
Drilling Measured From KELLY BUSHING
Elevation
K.B. 2216
D.F. 2214
G.L. 2208

Date	11/1/12		
Run Number	TWO		
Depth Driller	3970		
Depth Logger	3970		
Bottom Logged Interval	3952		
Top Log Interval	3150		
Casing Driller	8 5/8" @ 222		
Casing Logger	222		
Bit Size	7 7/8		
Type Fluid in Hole	CHEMICAL MUD		
Density / Viscosity	9.1/54	CHLORIDES 2500 PPM	
pH / Fluid Loss	10.0/8.0		
Source of Sample	FLOWLINE		
Rin @ Meas. Temp	.90 @ 62F		
Rmf @ Meas. Temp	.67 @ 62F		
Rmc @ Meas. Temp	1.08 @ 62F		
Source of Rmf / Rmc	MEASURED		
Rin @ BHT	.48 @ 115F		
Time Circulation Stopped	2 HOURS		
Time Logger on Bottom			
Maximum Recorded Temperature	115F		
Equipment Number	680		
Location	HAYS, KS.		
Recorded By	JASON CAPPELLUCCI		
Witnessed By	RON NELSON		

<<< Fold Here >>>

All interpretations are opinions based on inferences from electrical or other measurements and we cannot and do not guarantee the accuracy or correctness of any interpretation, and we shall not, except in the case of gross or willful negligence on our part, be liable or responsible for any loss, costs, damages, or expenses incurred or sustained by anyone resulting from any interpretation made by any of our officers, agents or employees. These interpretations are also subject to our general terms and conditions set out in our current Price Schedule.

Comments

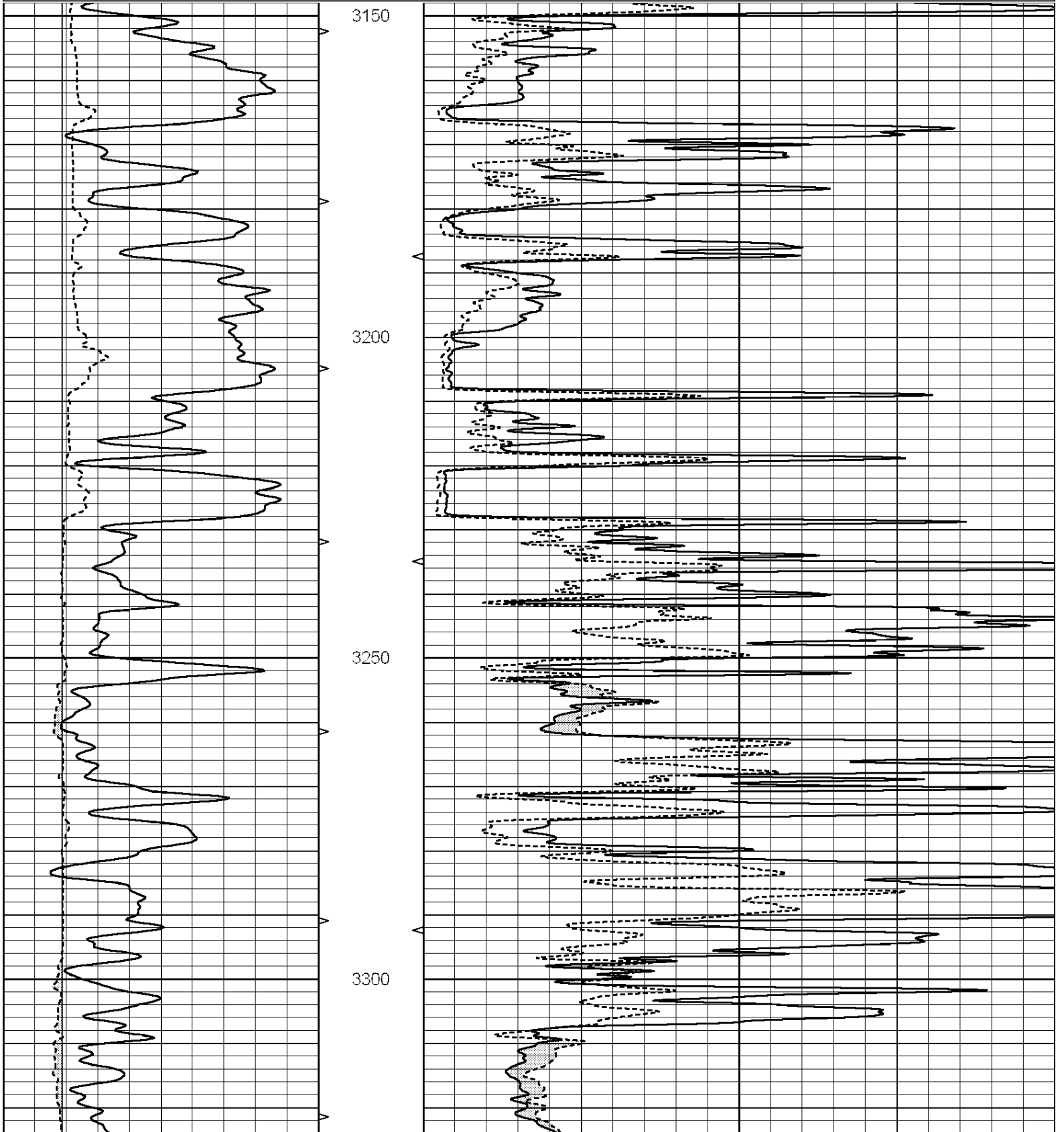
THANK YOU FOR USING SUPERIOR WELL SERVICE (785) 628-6395
DIRECTIONS
I-70 & RIGA EXIT - 1/2 N. - 1 E. - S. & W. INTO

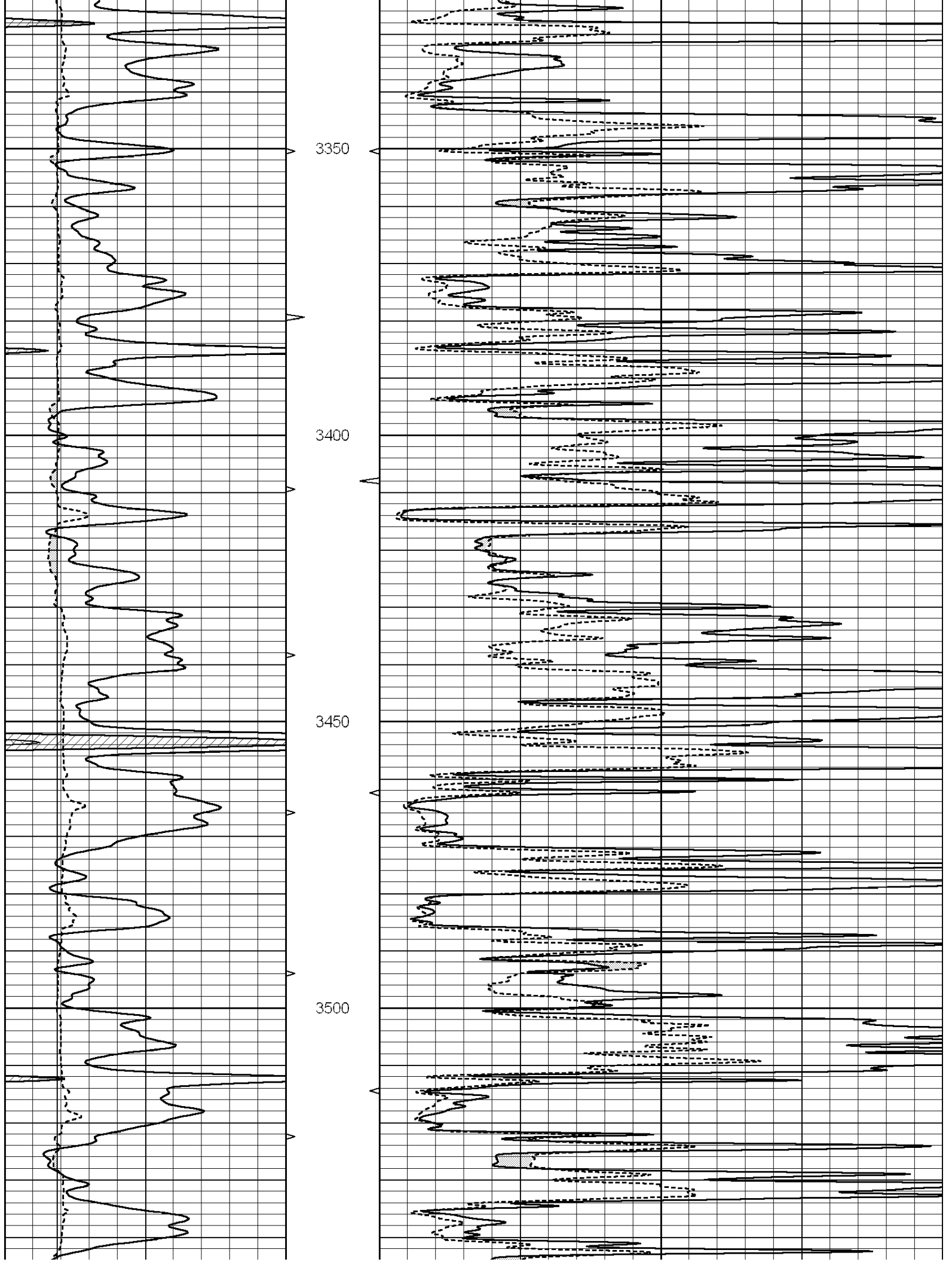


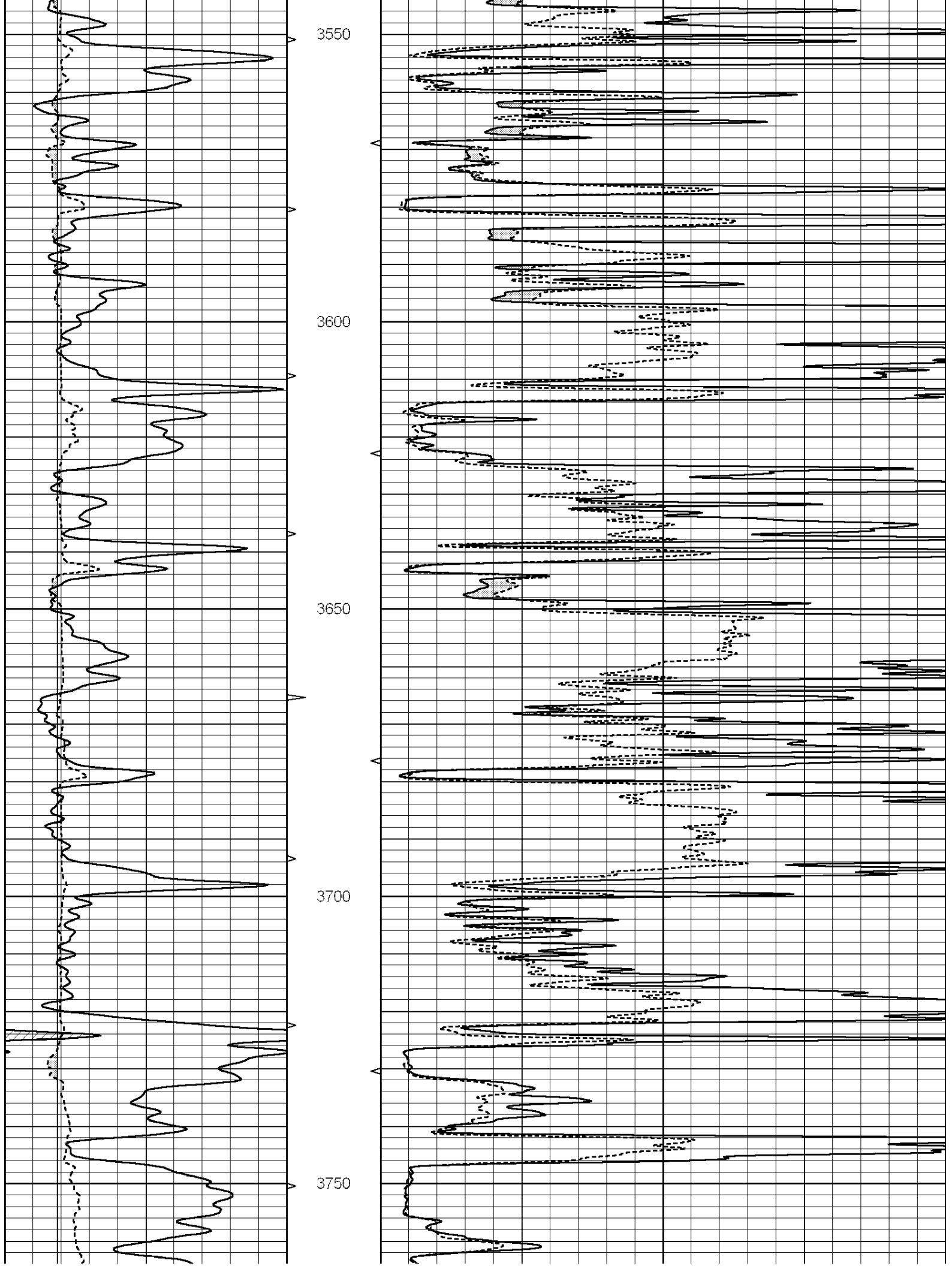
MAIN SECTION

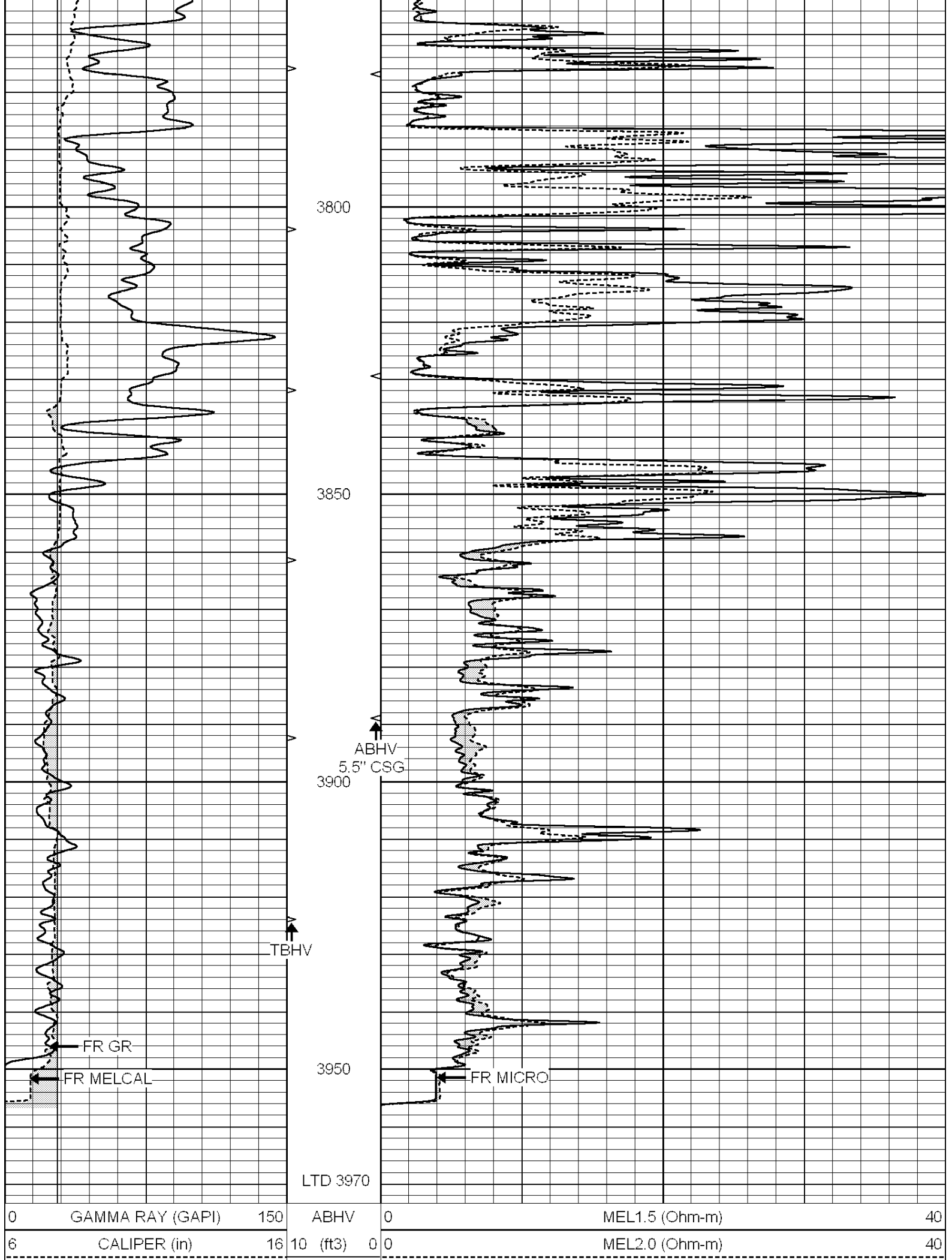
Database File: 009991ddn.db
 Dataset Pathname: pass6.1
 Presentation Format: _micro
 Dataset Creation: Thu Nov 01 04:42:14 2012 by Calc Open-Cased 090629
 Charted by: Depth in Feet scaled 1:240

0	GAMMA RAY (GAPI)	150	ABHV	0	MEL1.5 (Ohm-m)	40
6	CALIPER (in)	16	10 (ft3)	0 0	MEL2.0 (Ohm-m)	40
			TBHV			
			0 (ft3)	10		









3800

3850

3900

3950

LTD 3970

0 GAMMA RAY (GAPI) 150

6 CALIPER (in) 16

ABHV

10 (ft3) 0

0 MEL1.5 (Ohm-m) 40

0 MEL2.0 (Ohm-m) 40

FR GR

FR MELCAL

ABHV
5.5" CSG

TBHV

FR MICRO

TBHV
0 (ft3) 10

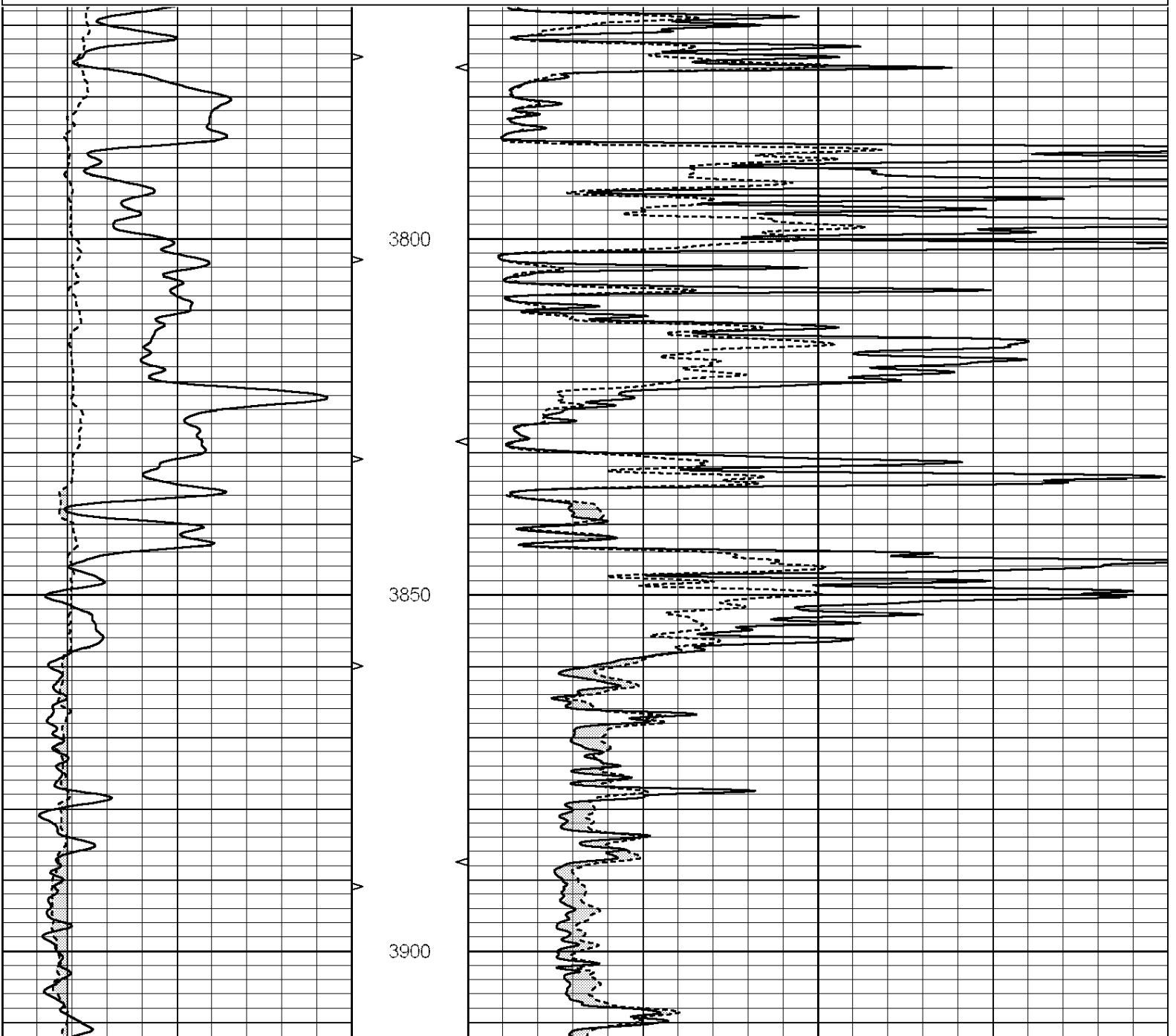


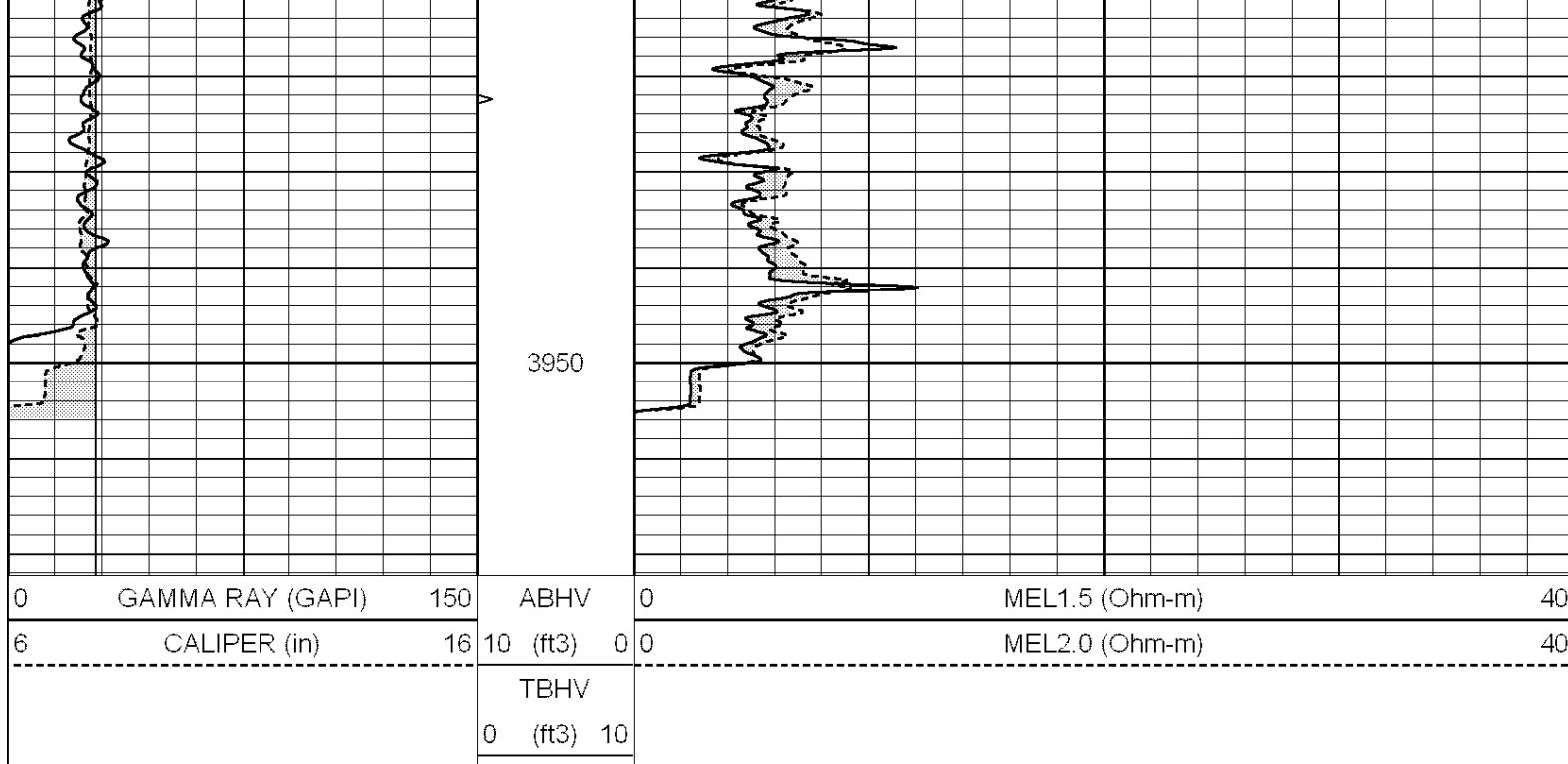
**COMPLETION
& PRODUCTION
SERVICES CO.**

REPEAT SECTION

Database File: 009991ddn.db
Dataset Pathname: pass5.1
Presentation Format: _micro
Dataset Creation: Thu Nov 01 04:41:36 2012 by Calc Open-Cased 090629
Charted by: Depth in Feet scaled 1:240

0	GAMMA RAY (GAPI)	150	ABHV	0	MEL1.5 (Ohm-m)	40
6	CALIPER (in)	16	10 (ft3)	0 0	MEL2.0 (Ohm-m)	40
			TBHV			
			0 (ft3) 10			





Calibration Report

Database File: 009991ddn.db
 Dataset Pathname: pass6.1
 Dataset Creation: Thu Nov 01 04:42:14 2012 by Calc Open-Cased 090629

MICRO Calibration Report

Serial Number:	MICRO6	
Tool Model:	PROBE	
Performed:	Sat Oct 20 22:17:58 2012	
Caliper Calibration:	Gain=6.253	Offset=-1.108
References	Low Cal	High Cal
Readings	5.800	13.000
	1.178	2.330
1.5" Calibration:	Gain=30.075	Offset=-0.200
References	Low Cal	High Cal
Readings	0.000	20.000
	0.004	1.196
2" Calibration:	Gain=45.041	Offset=-0.800
References	Low Cal	High Cal
Readings	0.000	20.000
	0.006	0.913

Gamma Ray Calibration Report

Serial Number:	#8	
Tool Model:	OPEN	
Performed:	Mon Jun 13 16:56:43 2011	
Calibrator Value:	150.0	GAPI
Background Reading:	0.0	cps
Calibrator Reading:	175.0	cps
Sensitivity:	0.8371	GAPI/cps