



**COMPLETION
& PRODUCTION
SERVICES CO.**

**SONIC
LOG**

Company DOWNING NELSON OIL COMPANY, INC.
Well SEITZ BARNHARDT "C" #2
Field RIDGEWAY
County TREGO
State KANSAS

Company DOWNING NELSON OIL COMPANY, INC.
Well SEITZ BARNHARDT "C" #2
Field RIDGEWAY
County TREGO State KANSAS

Location: 840' FNL & 520' FEL
API # : 15-195-22824-0000
SEC 34 TWP 12S RGE 21W
Permanent Datum GROUND LEVEL Elevation 2208
Log Measured From KELLY BUSHING 8' A.G.L.
Drilling Measured From KELLY BUSHING
Elevation
K.B. 2216
D.F. 2214
G.L. 2208

Date	11/1/12
Run Number	TWO
Depth Driller	3970
Depth Logger	3970
Bottom Logged Interval	3960
Top Log Interval	200
Casing Driller	8 5/8" @ 222
Casing Logger	222
Bit Size	7 7/8
Type Fluid in Hole	CHEMICAL MUD
Density / Viscosity	9.154 10.0/8.0
pH / Fluid Loss	10.0/8.0
Source of Sample	FLOWLINE
Rim @ Meas. Temp	.90 @ 62F
Rmf @ Meas. Temp	.67 @ 62F
Rmc @ Meas. Temp	1.08 @ 62F
Source of Rmf / Rmc	MEASURED
Rim @ BHT	.48 @ 115F
Time Circulation Stopped	2 HOURS
Time Logger on Bottom	
Maximum Recorded Temperature	115F
Equipment Number	680
Location	HAYS, KS.
Recorded By	JASON CAPPELLUCCI
Witnessed By	RON NELSON

<<< Fold Here >>>

All interpretations are opinions based on inferences from electrical or other measurements and we cannot and do not guarantee the accuracy or correctness of any interpretation, and we shall not, except in the case of gross or willful negligence on our part, be liable or responsible for any loss, costs, damages, or expenses incurred or sustained by anyone resulting from any interpretation made by any of our officers, agents or employees. These interpretations are also subject to our general terms and conditions set out in our current Price Schedule.

Comments

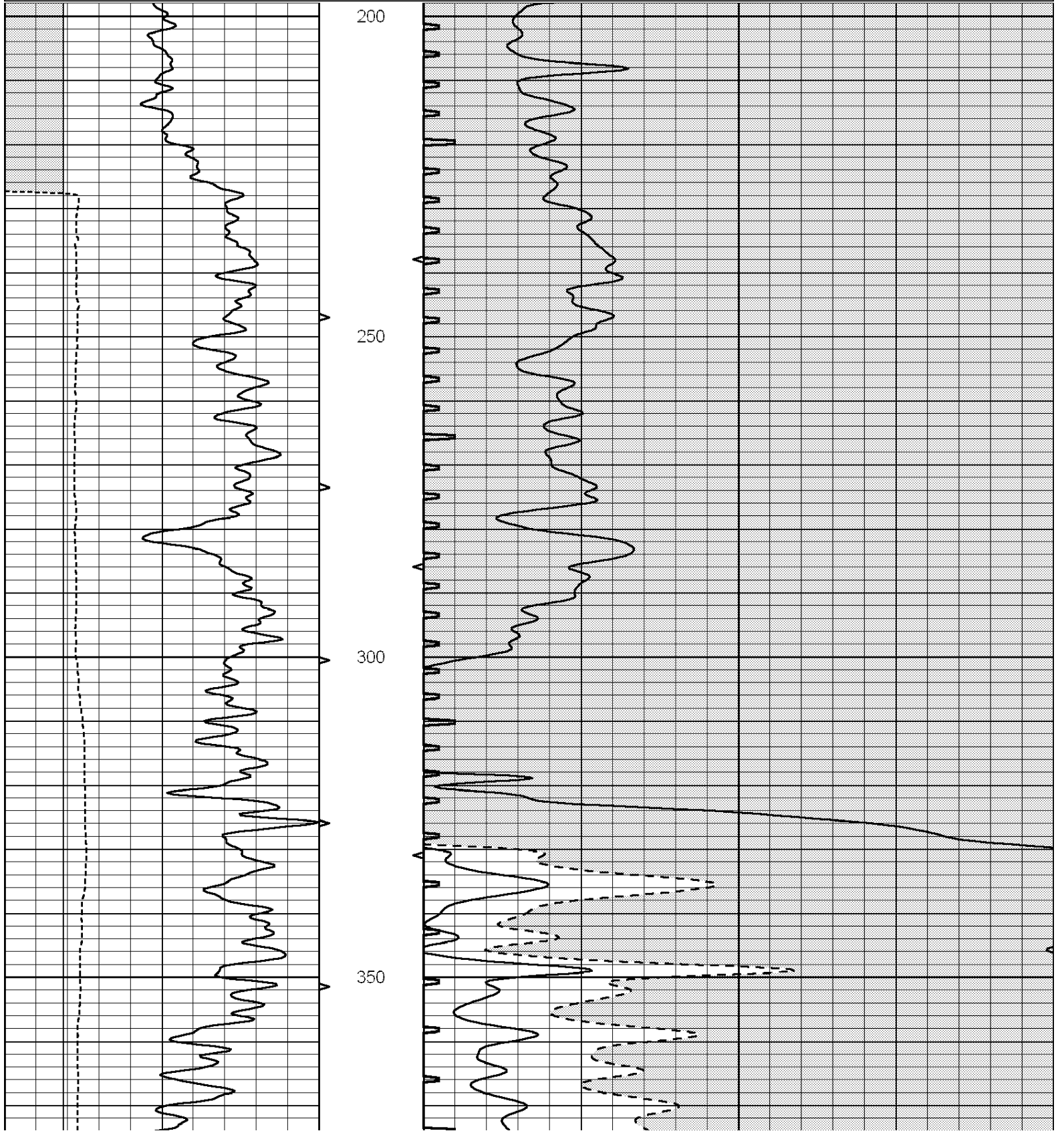
THANK YOU FOR USING SUPERIOR WELL SERVICE (785) 628-6395
DIRECTIONS
I-70 & RIGA EXIT - 1/2 N. - 1 E. - S. & W. INTO

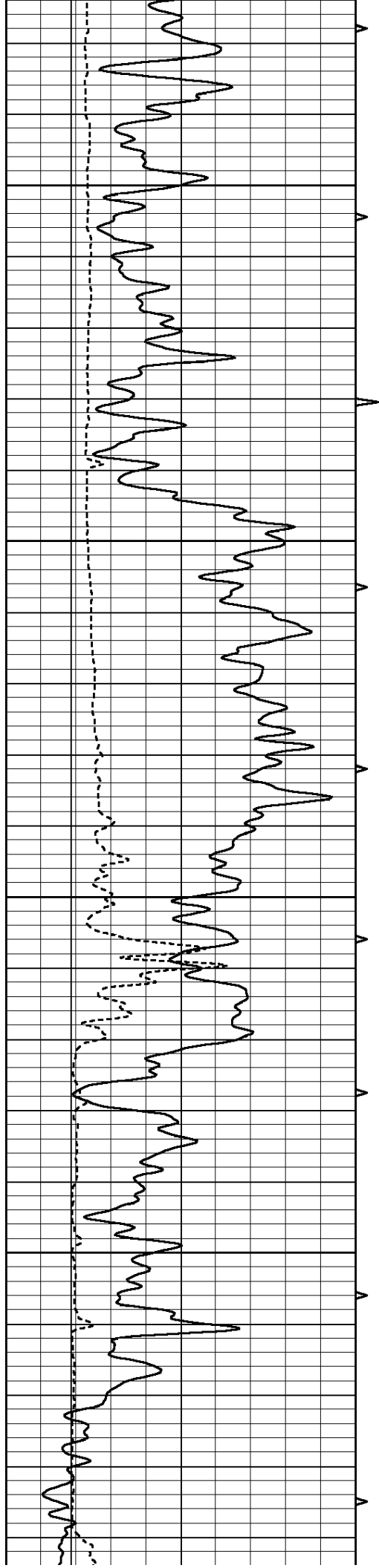


MAIN SECTION

Database File: 009991ddn.db
 Dataset Pathname: pass6.2
 Presentation Format: _slt
 Dataset Creation: Thu Nov 01 05:27:09 2012 by Calc Open-Cased 090629
 Charted by: Depth in Feet scaled 1:240

0	GAMMA RAY (GAPI)	150	ABHV	140	DELTA TIME (usec/ft)	40
6	CALIPER (in)	16	10 (ft3) 0	30	SONIC POROSITY (pu)	-10
-----			TBHV	0	ITT (msec)	20
			0 (ft3) 10			



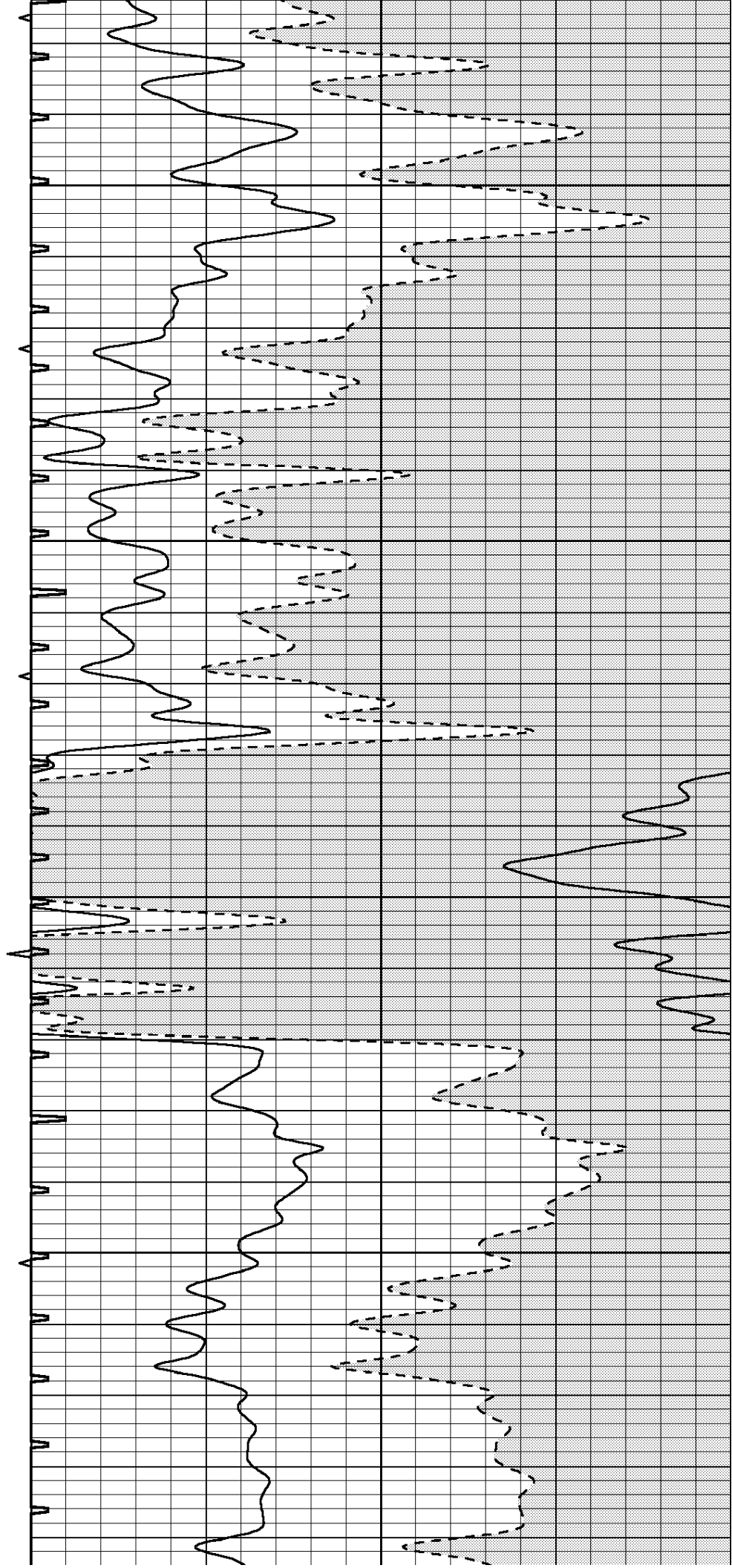


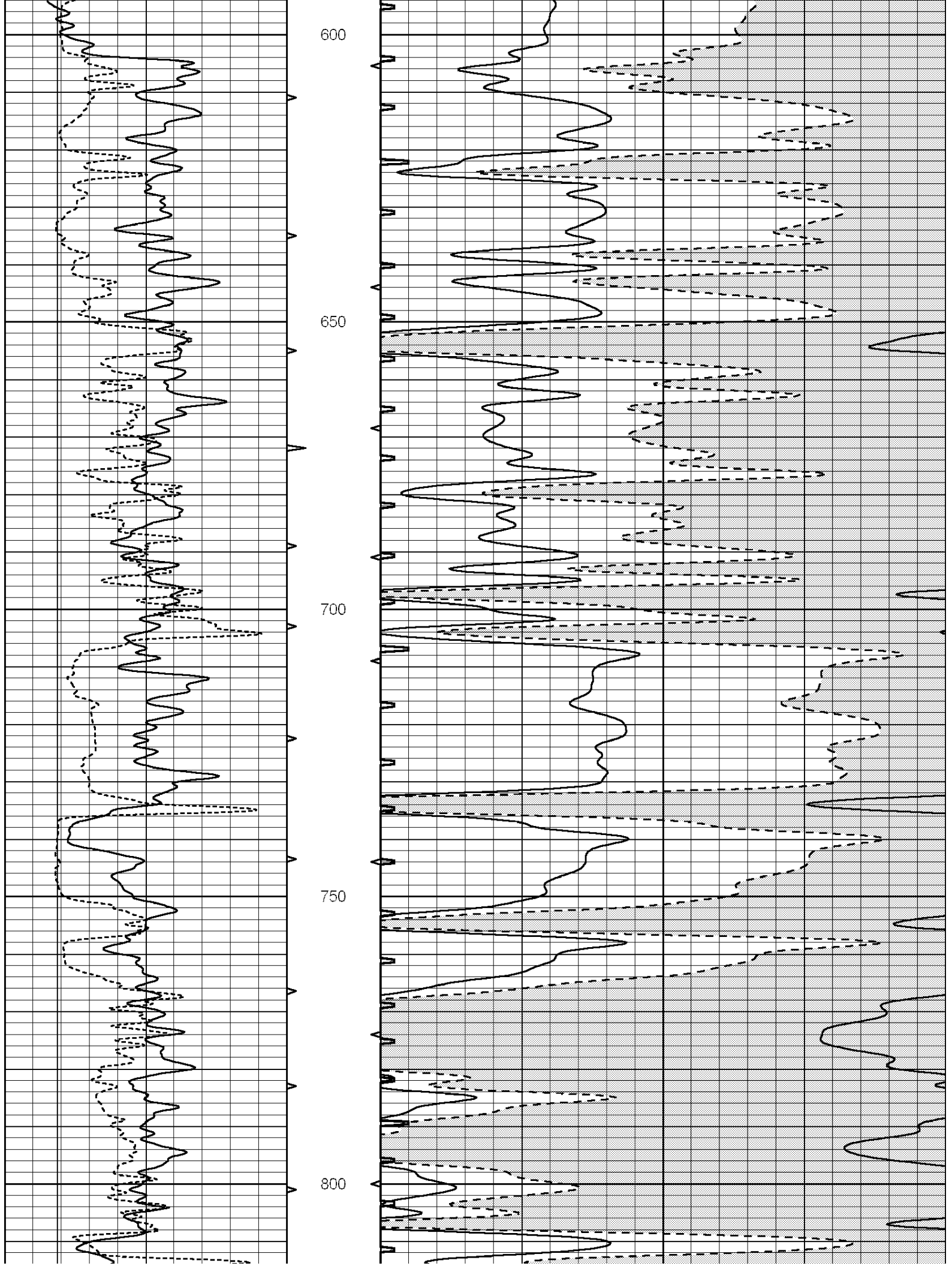
400

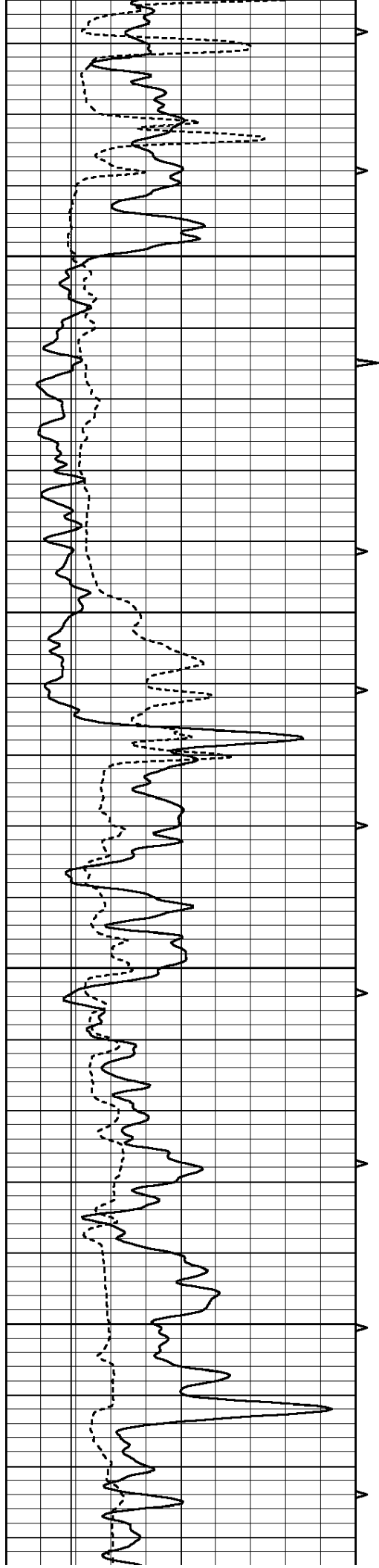
450

500

550





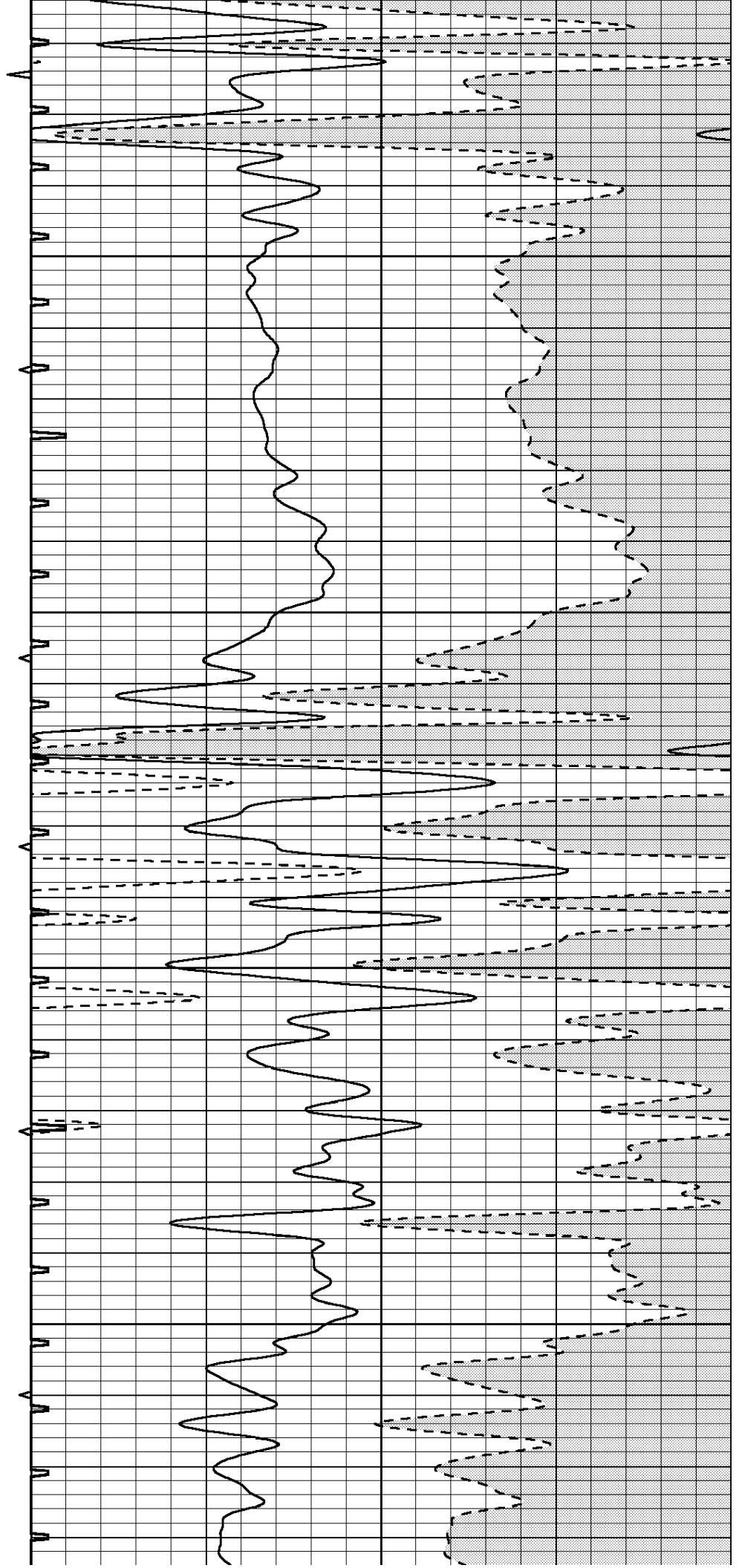


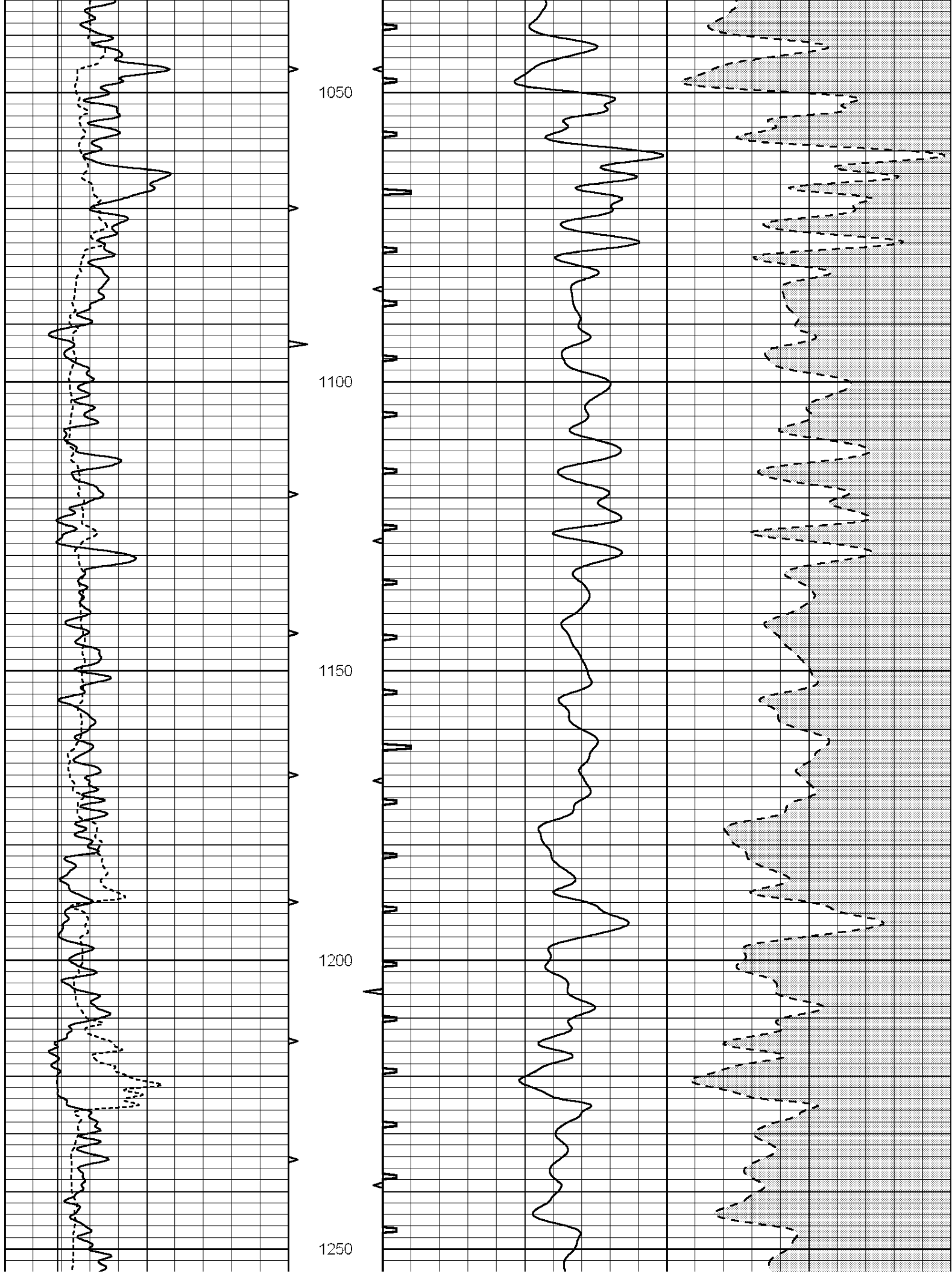
850

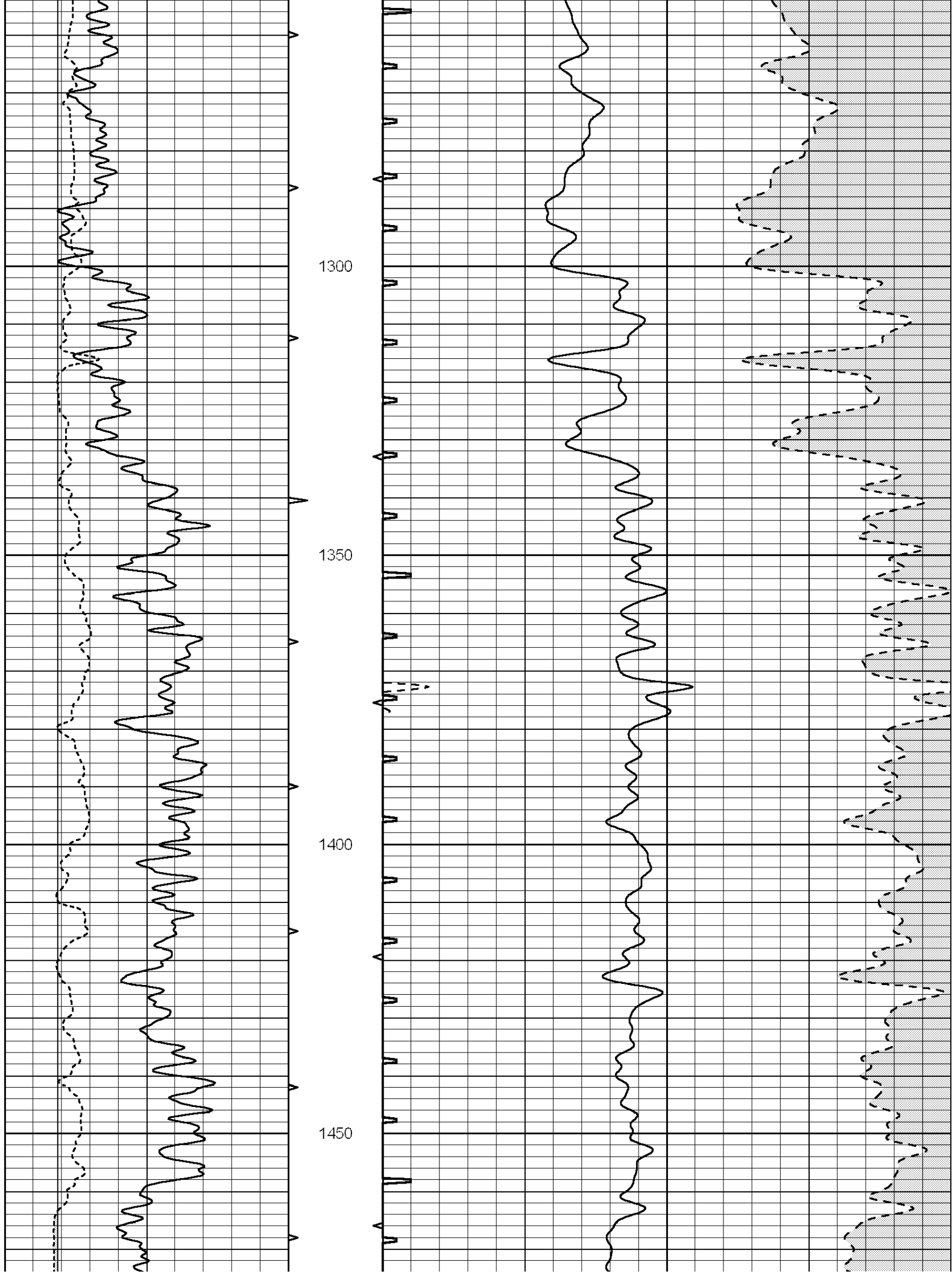
900

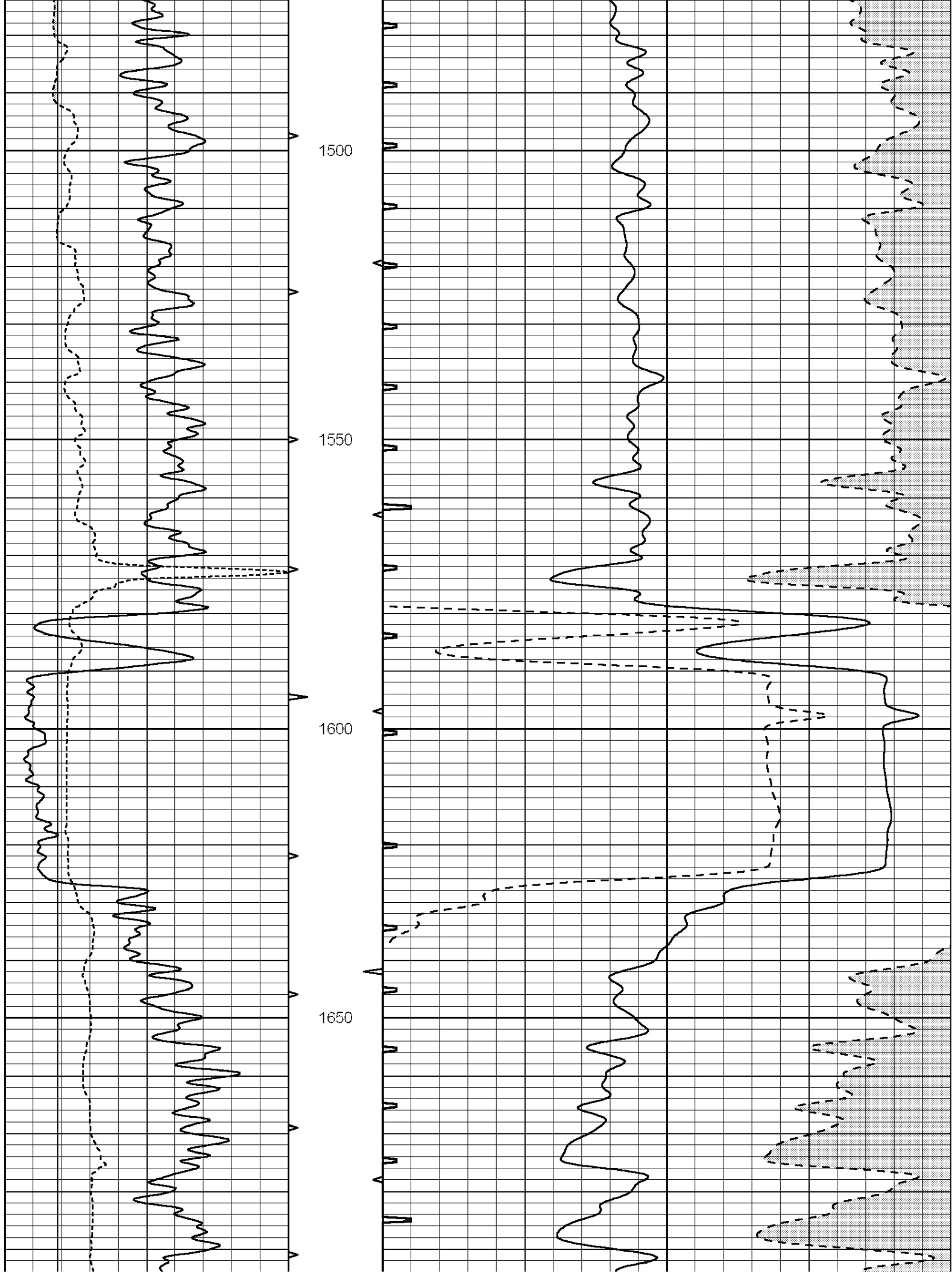
950

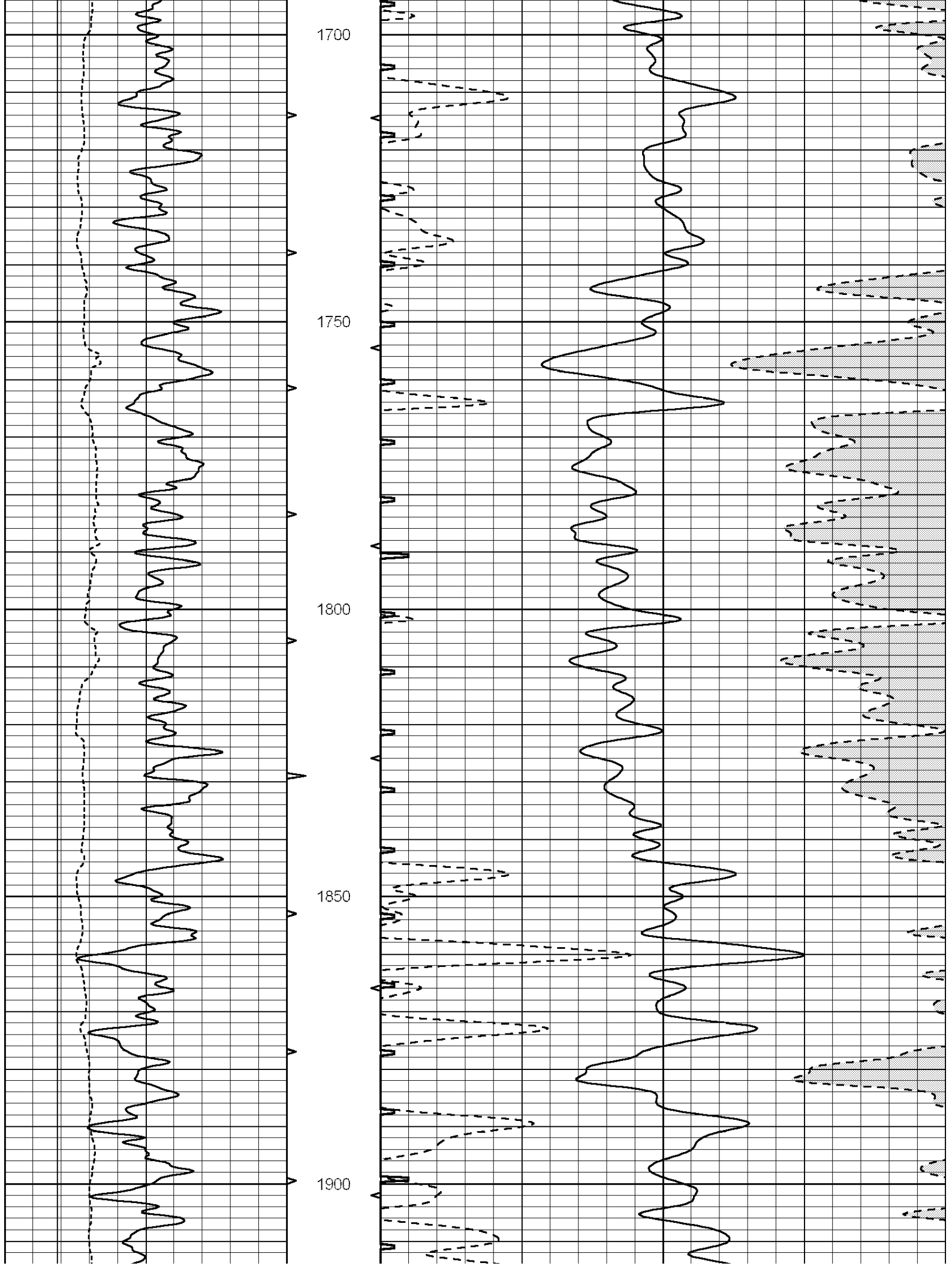
1000

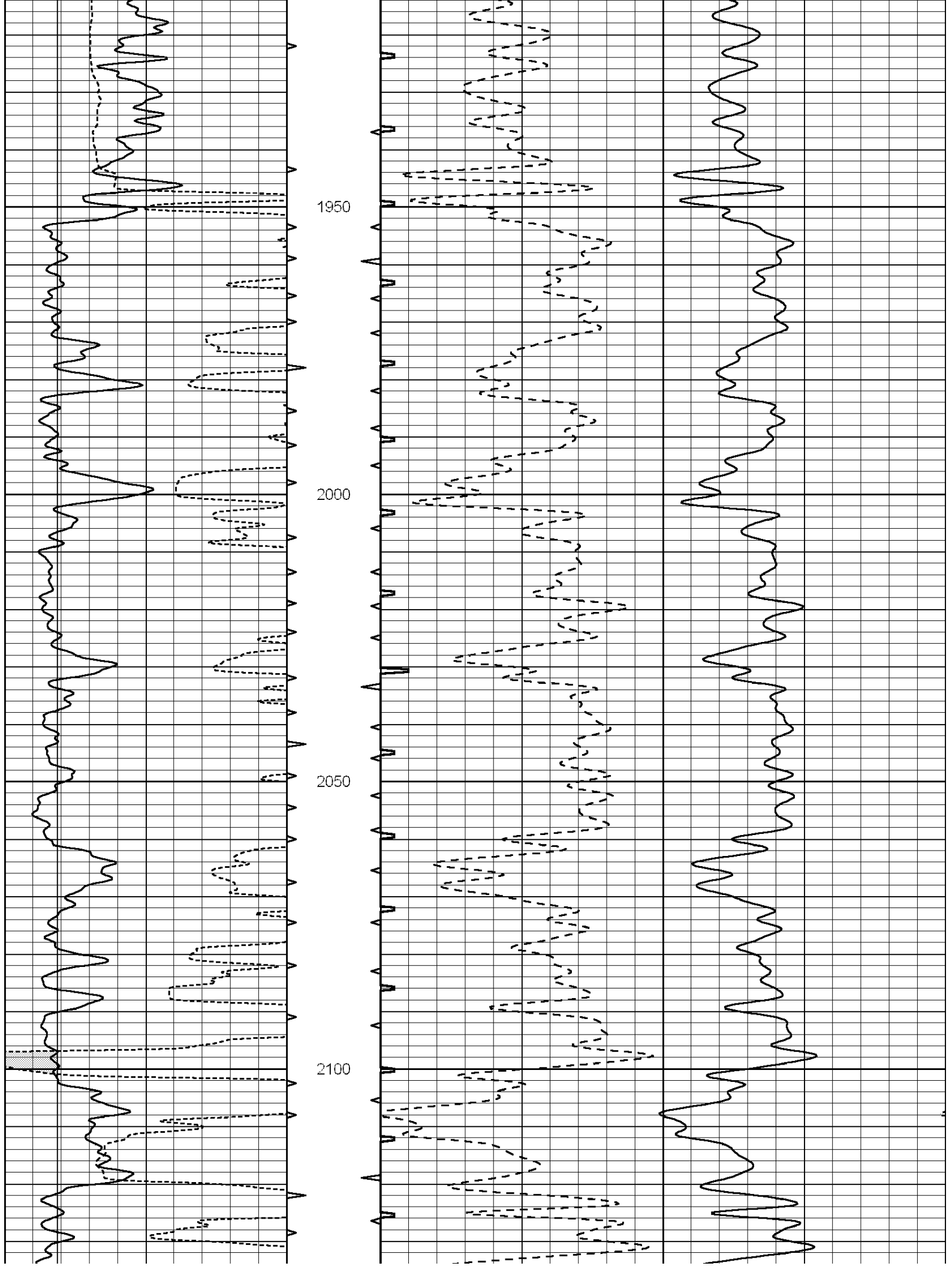


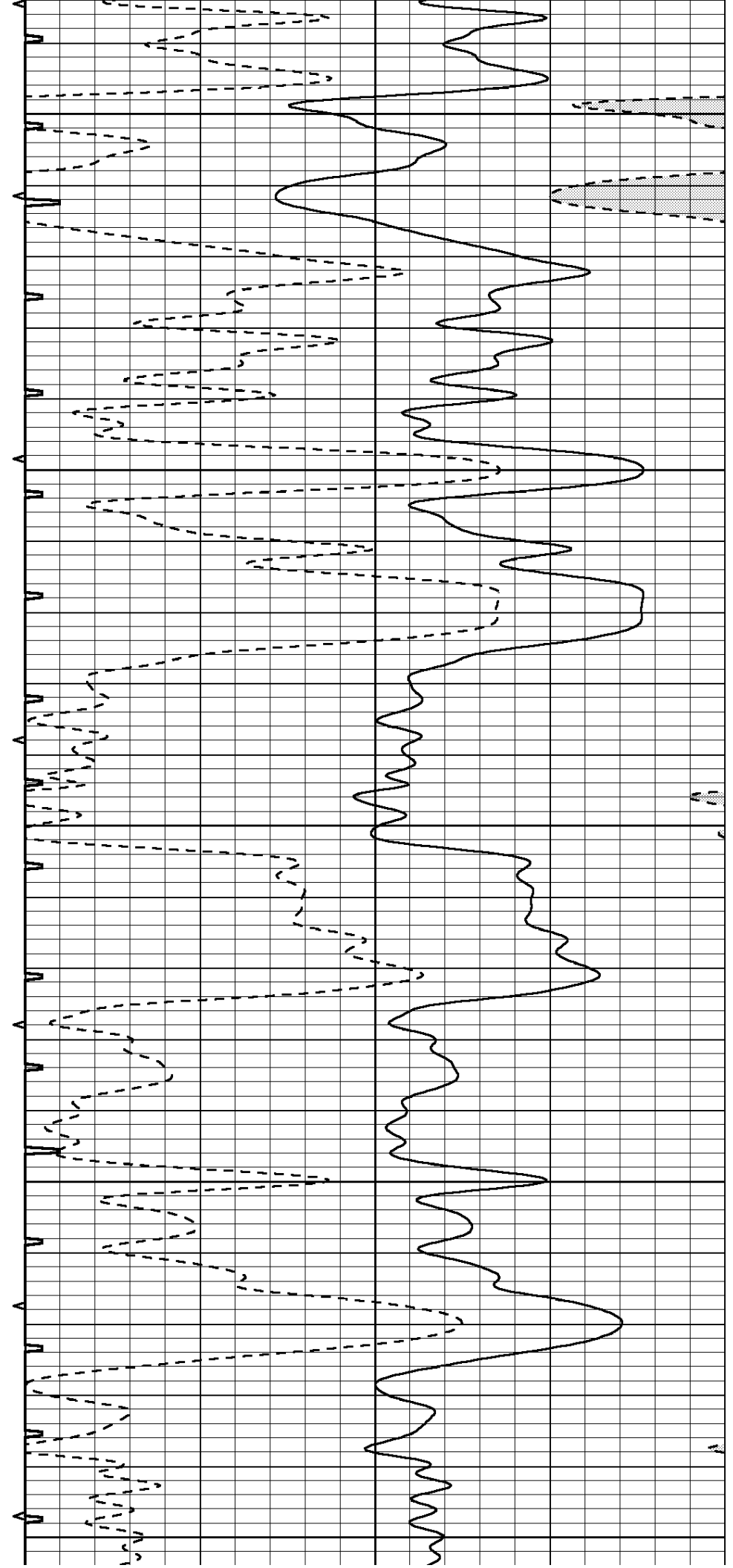
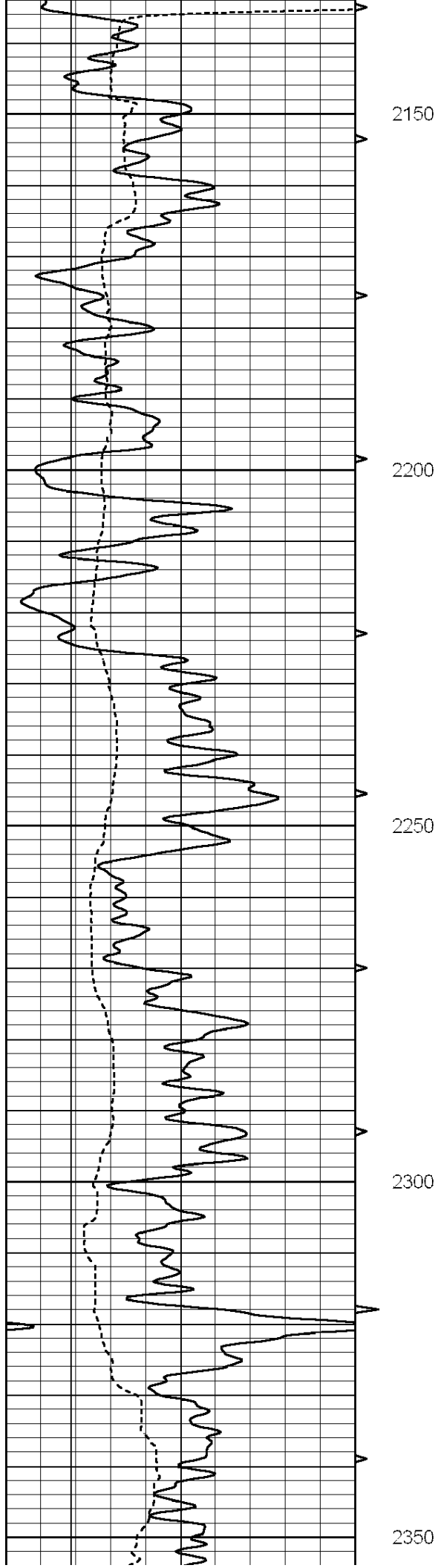


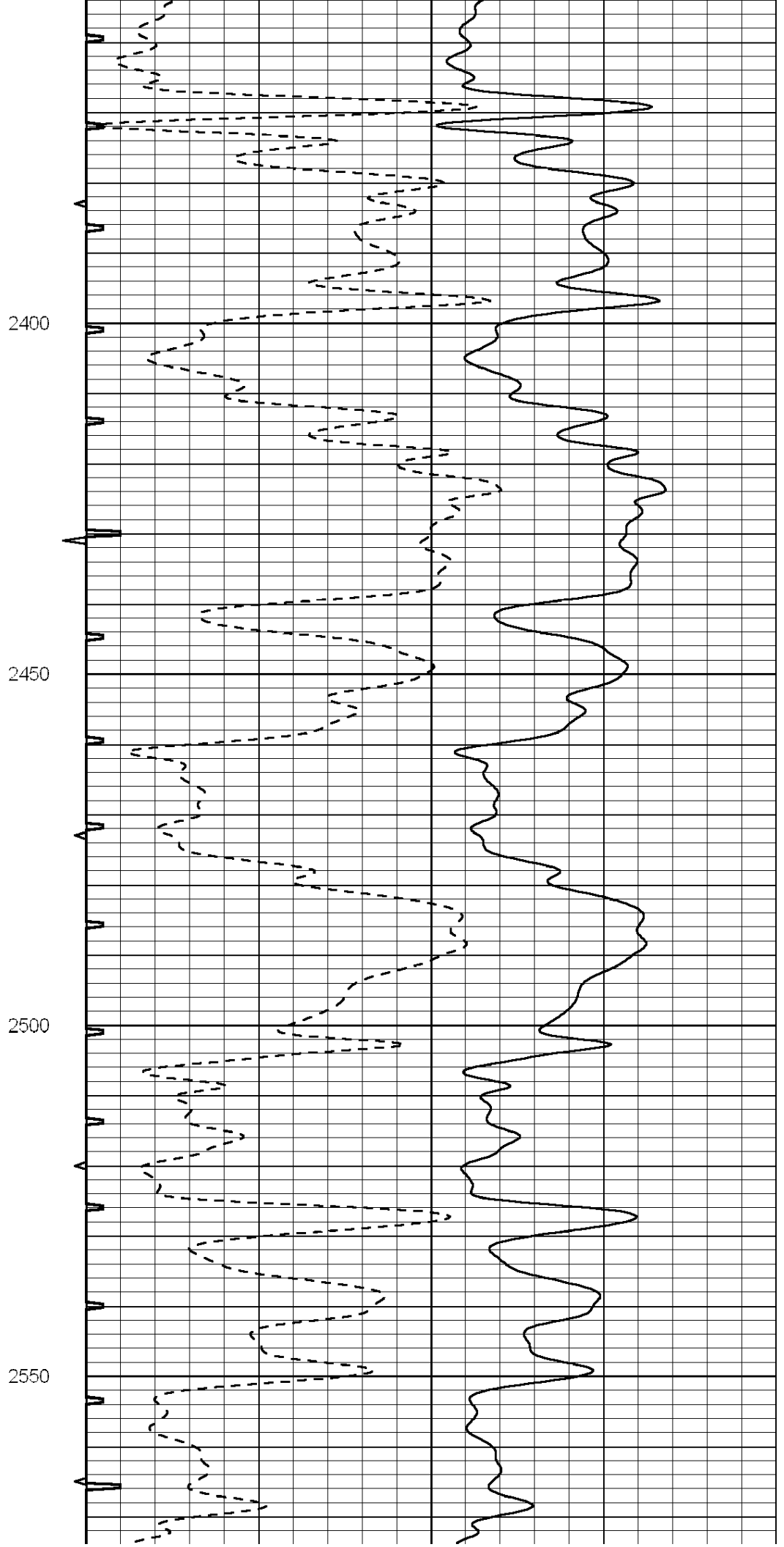
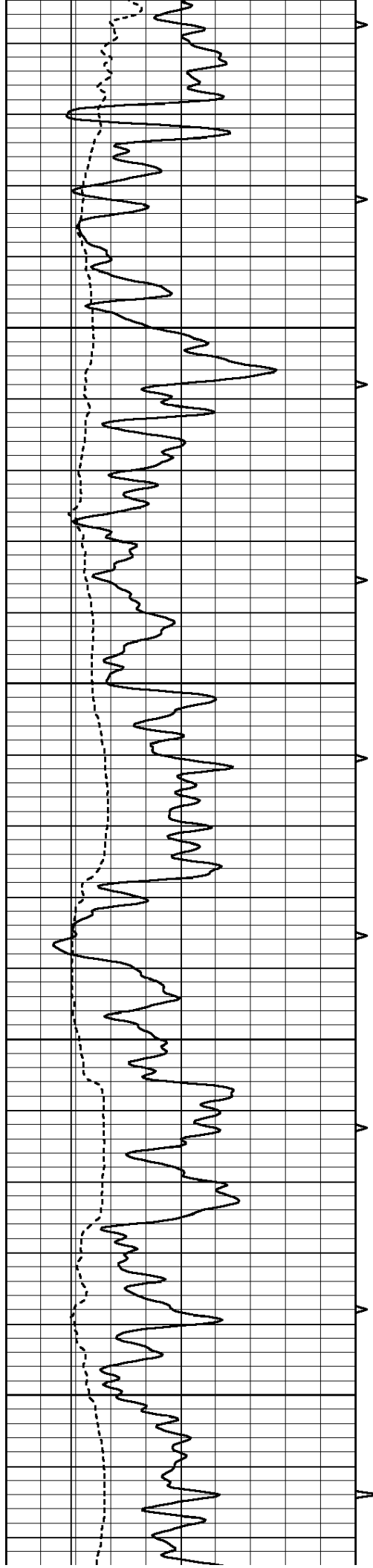


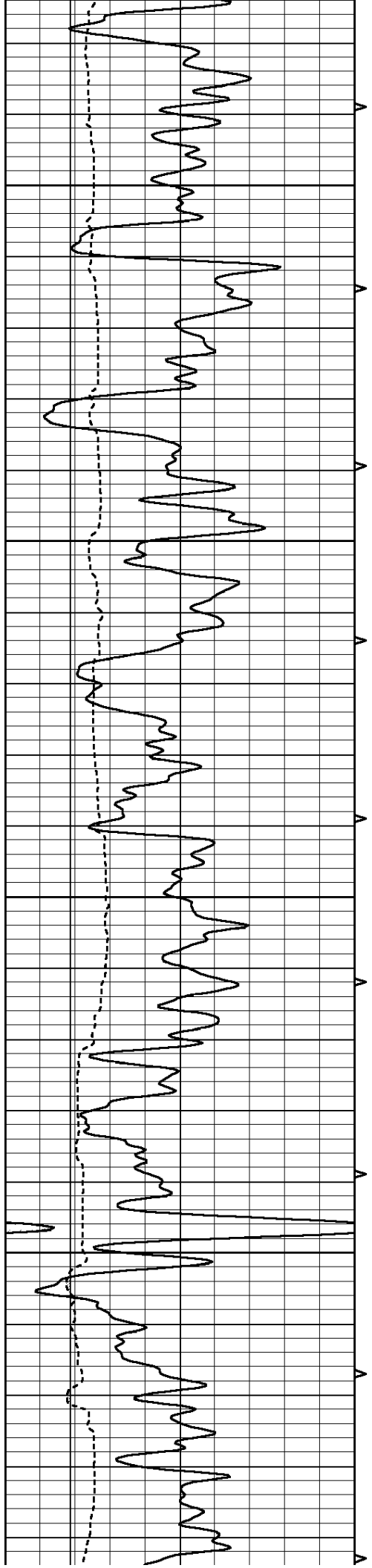










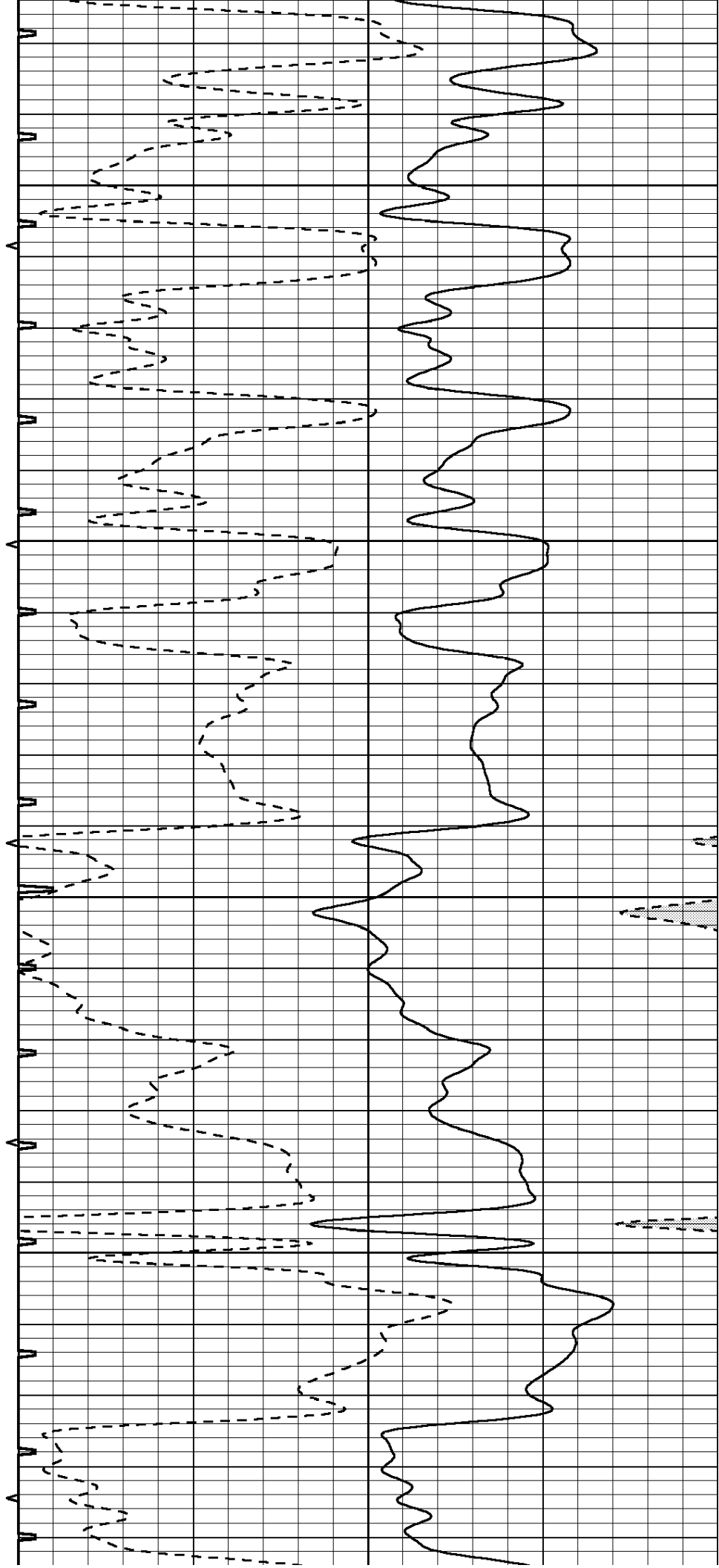


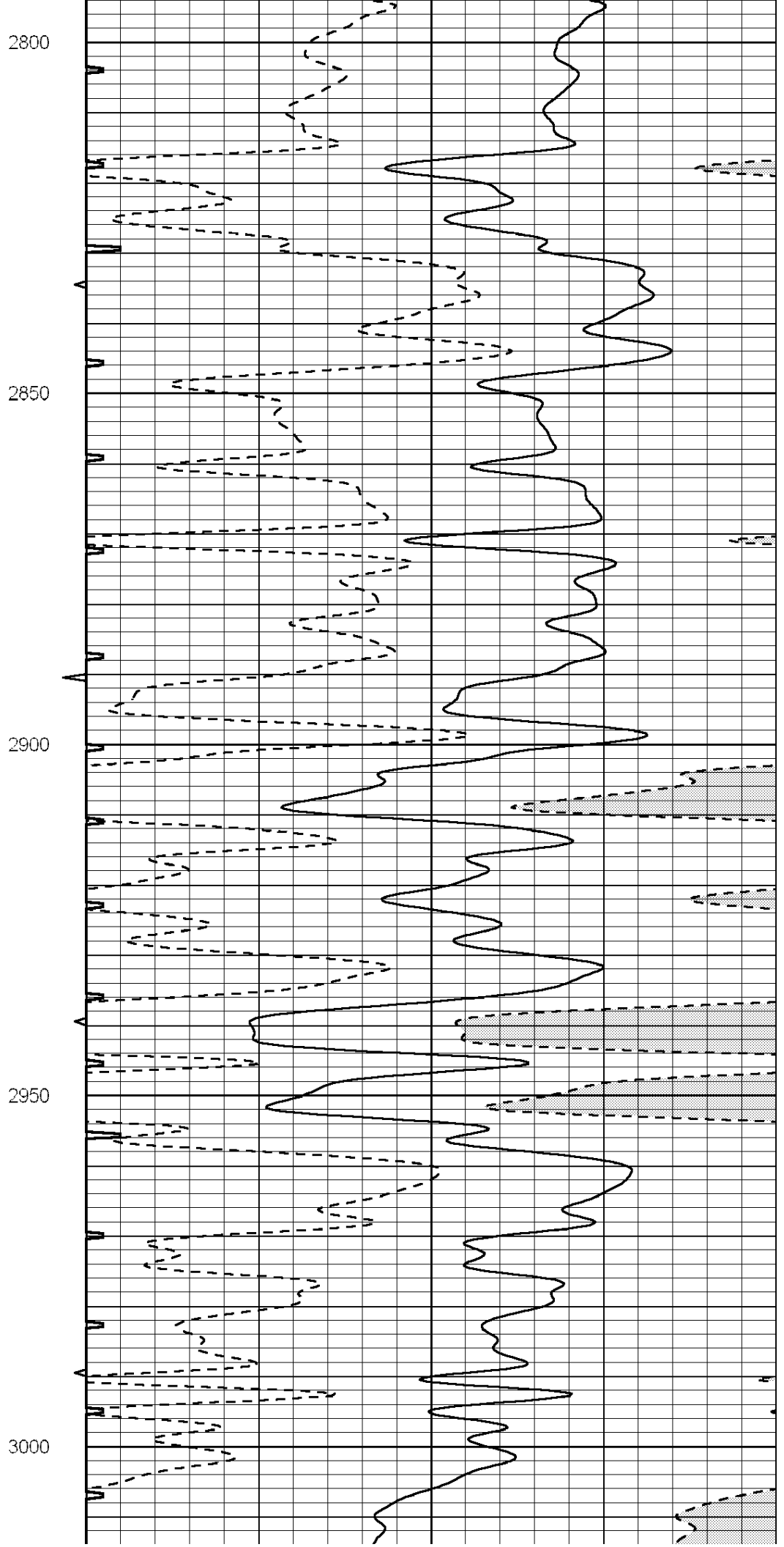
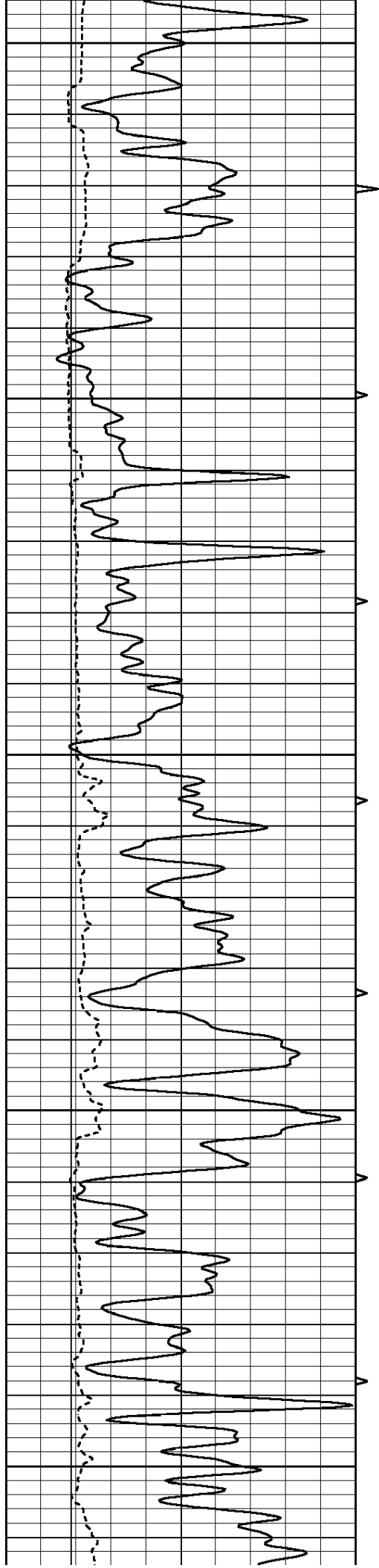
2600

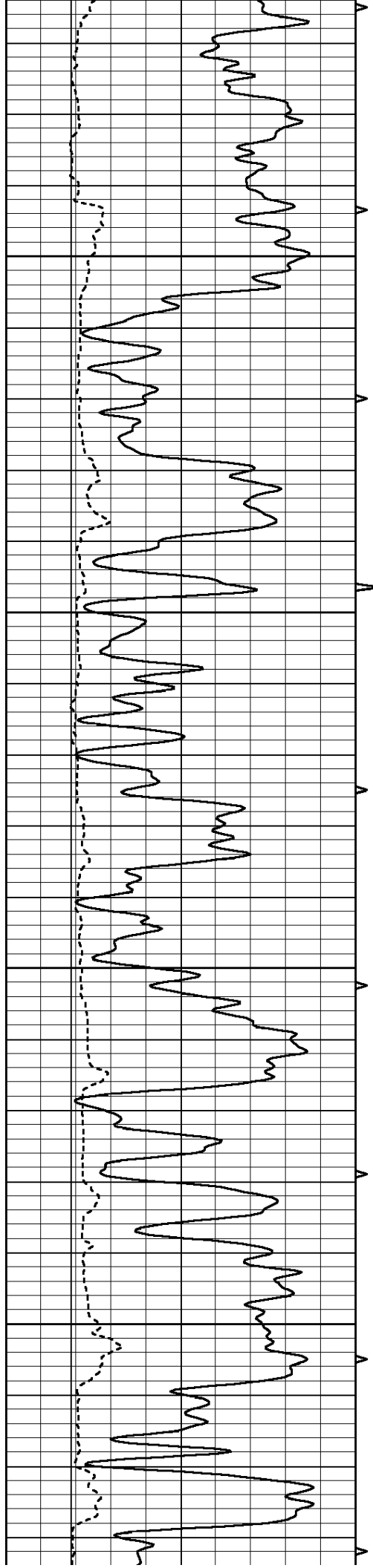
2650

2700

2750





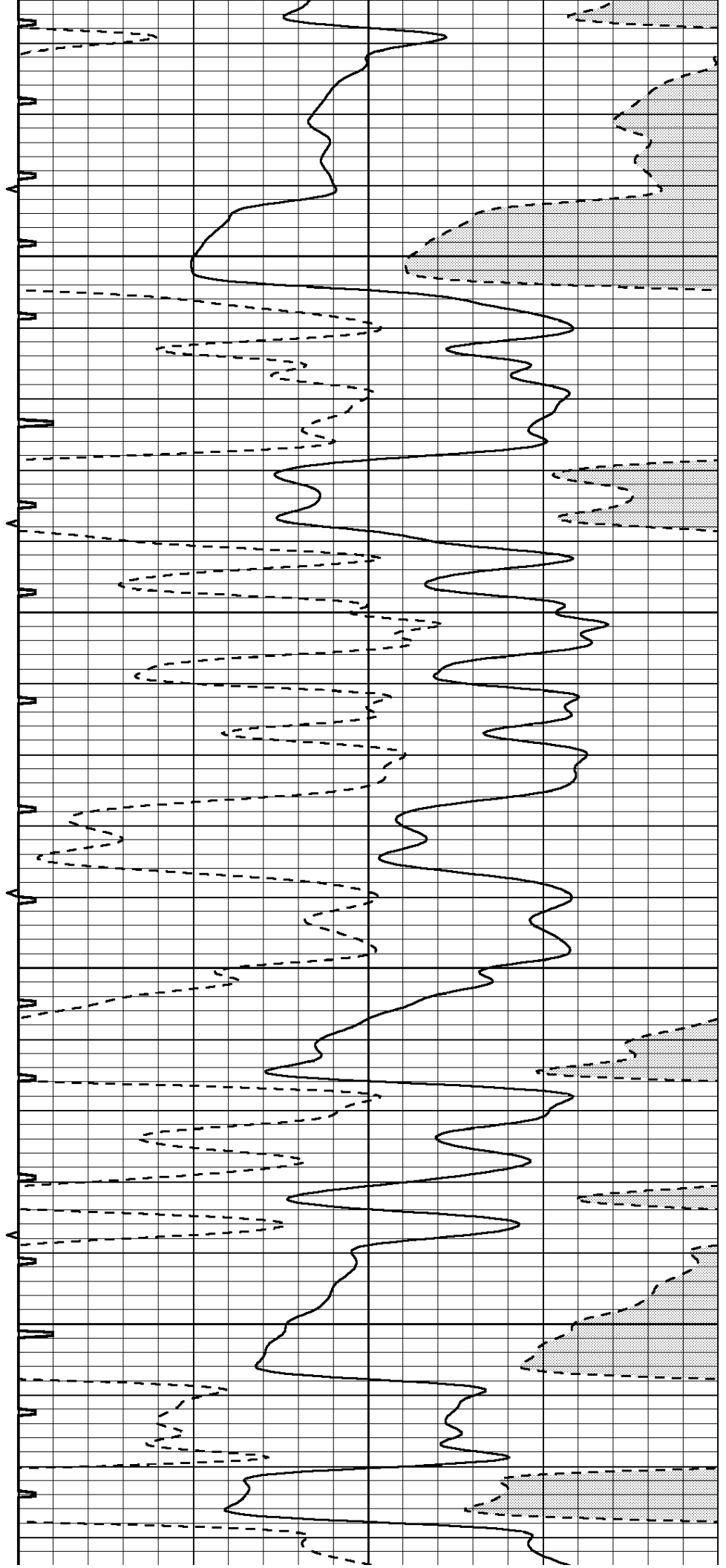


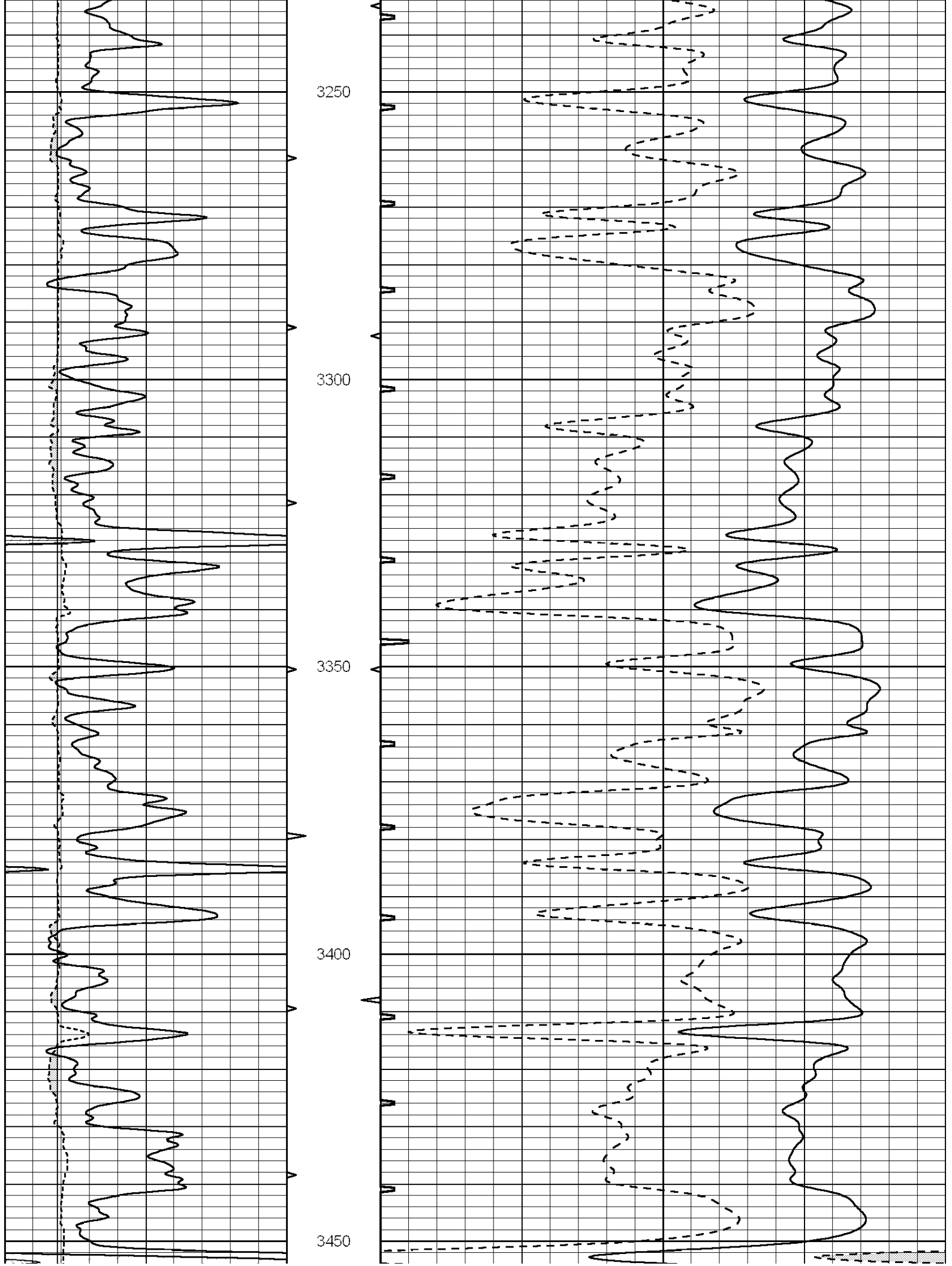
3050

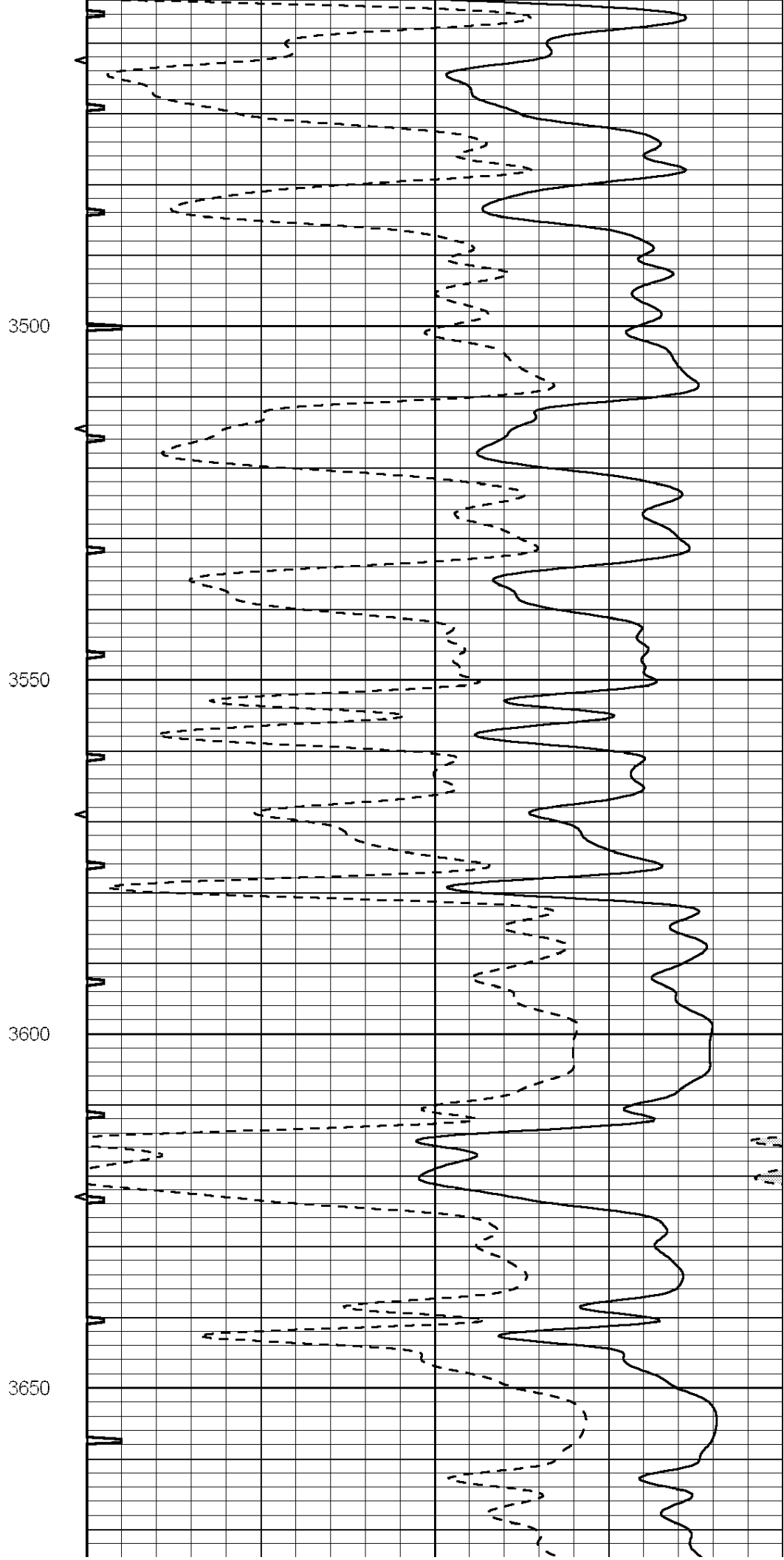
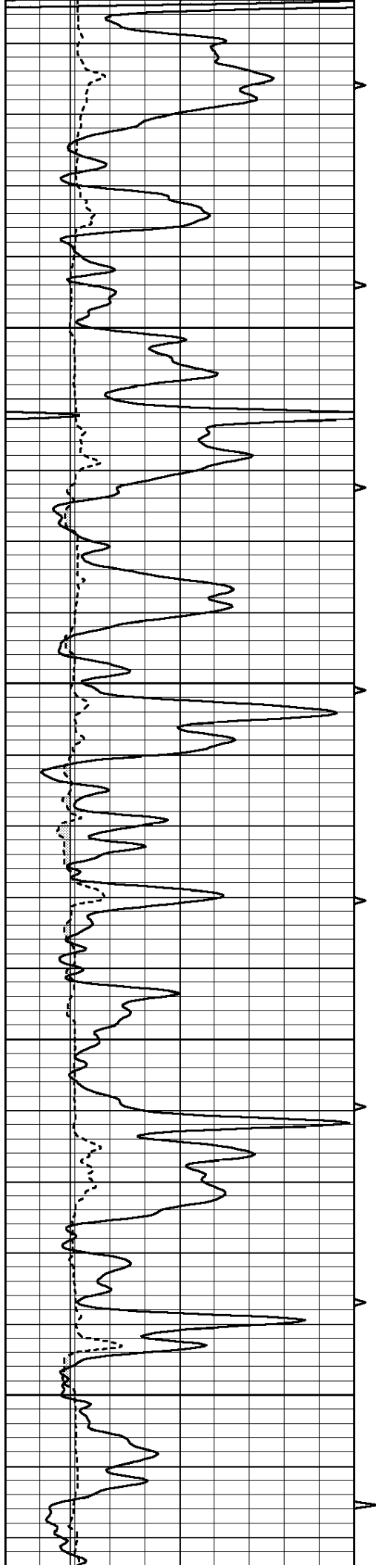
3100

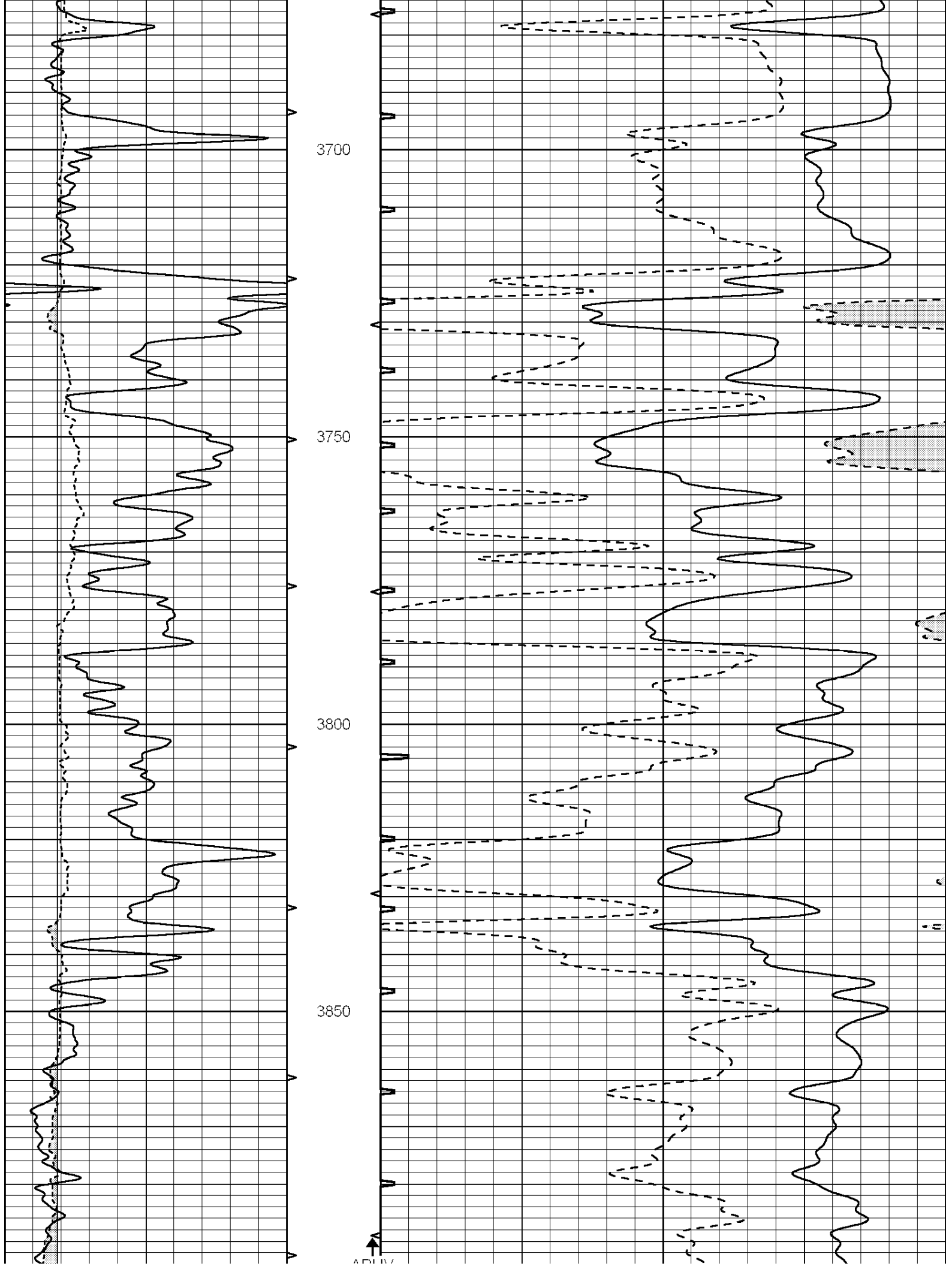
3150

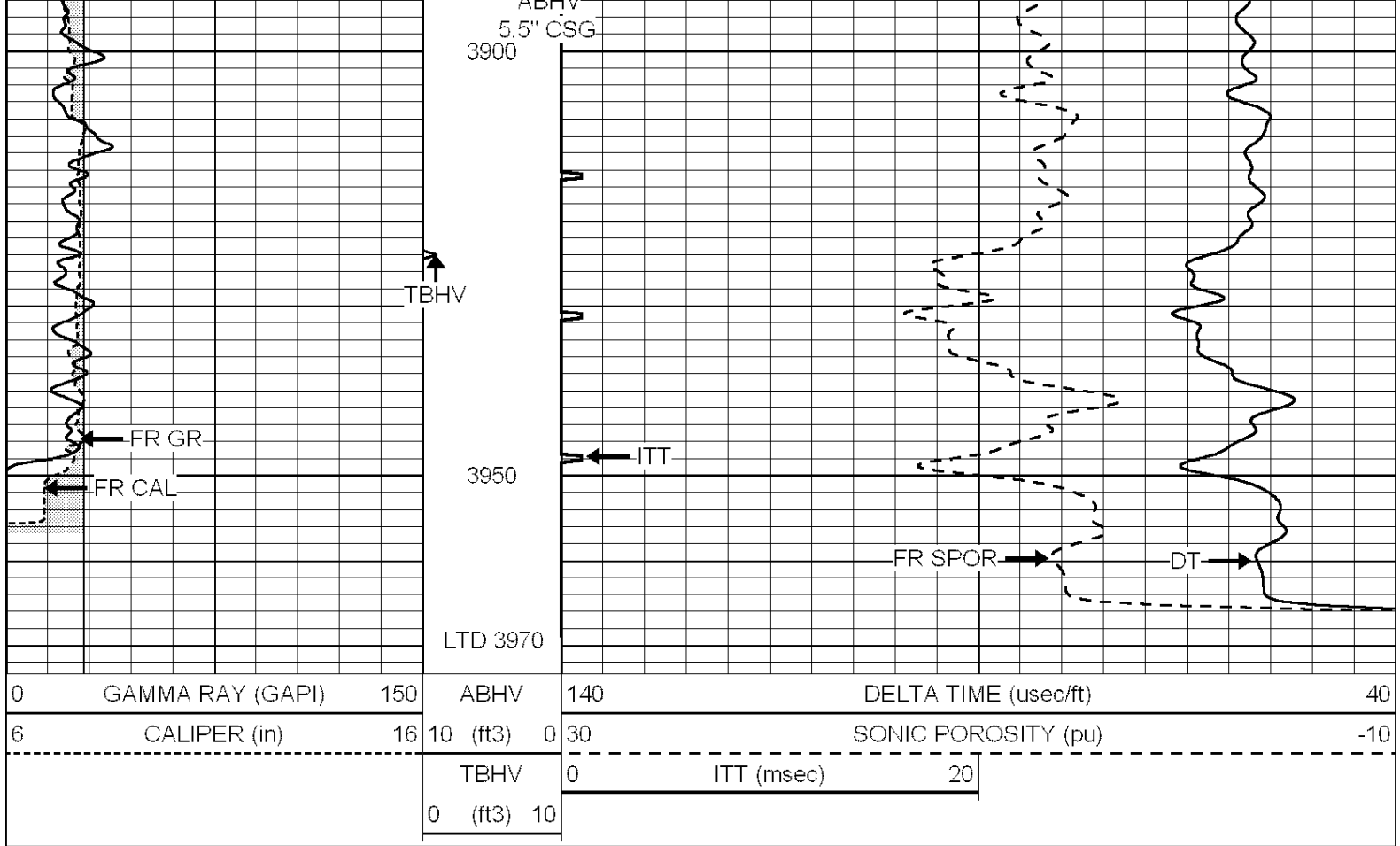
3200







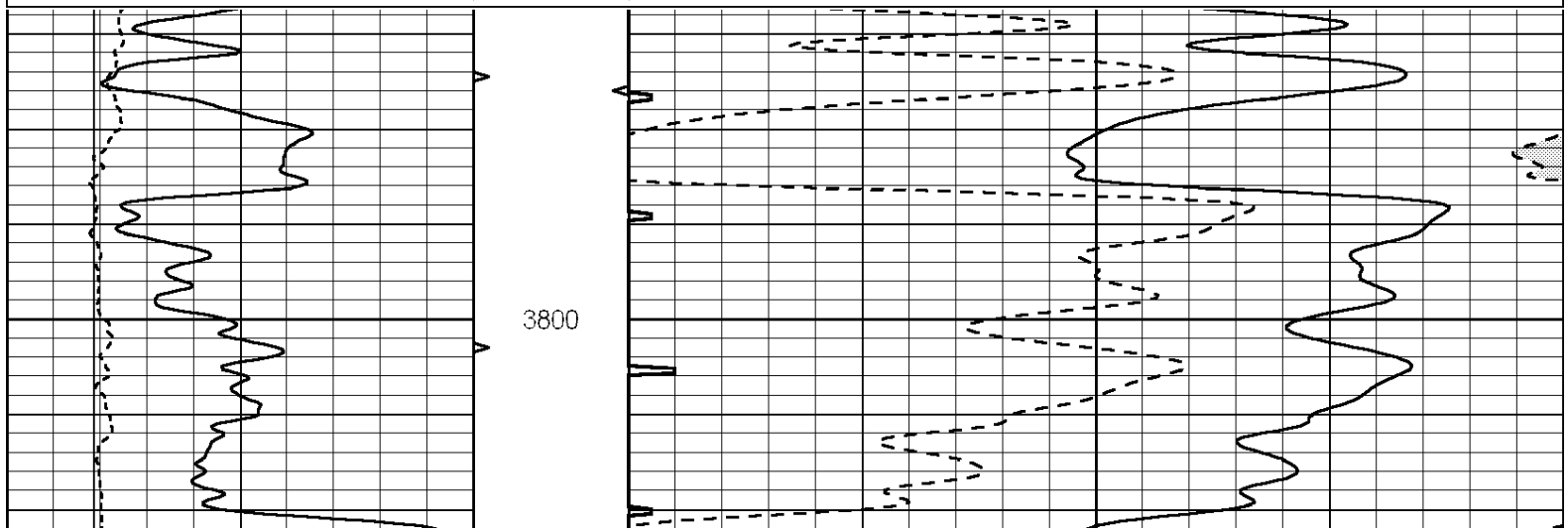


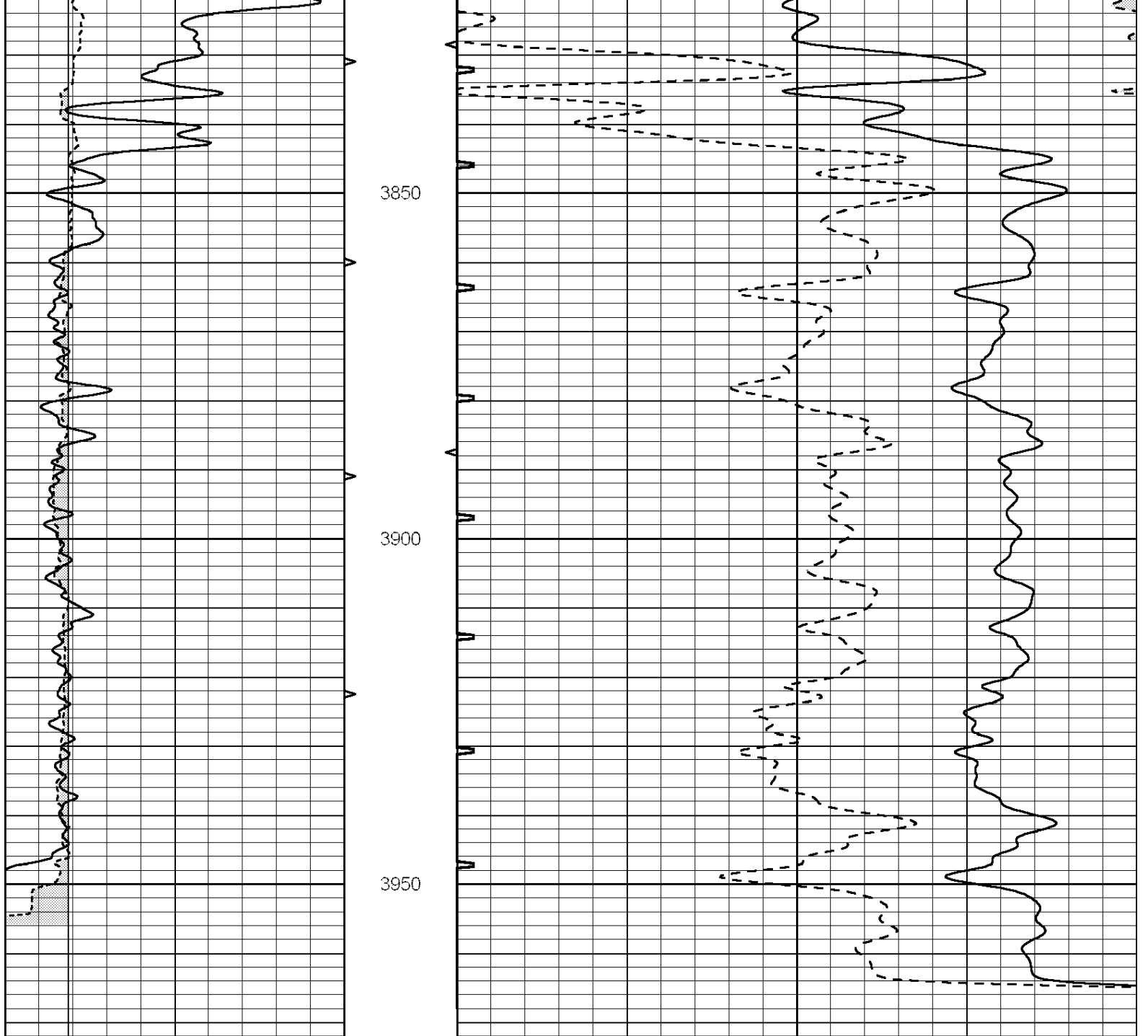


REPEAT SECTION

Database File: 009991ddn.db
 Dataset Pathname: pass5.1
 Presentation Format: _slt
 Dataset Creation: Thu Nov 01 04:41:36 2012 by Calc Open-Cased 090629
 Charted by: Depth in Feet scaled 1:240

0	GAMMA RAY (GAPI)	150	ABHV	140	DELTA TIME (usec/ft)	40	
6	CALIPER (in)	16	10 (ft3)	0	30	SONIC POROSITY (pu)	-10
			TBHV	0	ITT (msec)	20	
			0 (ft3)	10			





0	GAMMA RAY (GAPI)	150	ABHV	140	DELTA TIME (usec/ft)	40
6	CALIPER (in)	16	10 (ft3) 0	30	SONIC POROSITY (pu)	-10
			TBHV	0	ITT (msec)	20
			0 (ft3) 10			