



Pioneer Energy Services

Dual Induction Log

API No.	15-135-25457-00-00	
Company	American Warrior, Inc.	
Well	Meyer - Freda Unit #1	
Field	Margheim	
County	Ness	State
		Kansas
Location	40' FNL & 335' FWL	
Sec: 21	Twp: 19S	Rge: 21W
Permanent Datum	Ground Level	Elevation 2240
Log Measured From	Kelly Bushing	6 Ft. Above Perm. Datum
Drilling Measured From	Kelly Bushing	K.B. 2246 D.F. 2240 G.L. 2240

Date	10/28/2012
Run Number	One
Depth Driller	4374
Depth Logger	4369
Bottom Logged Interval	4368
Top Log Interval	200
Casing Driller	8.625 @ 225
Casing Logger	214
Bit Size	7.875
Type Fluid in Hole	Chemical
Salinity, ppm CL	3100
Density / Viscosity	9.3 60
pH / Fluid Loss	10.0 8.0
Source of Sample	Flowline
Rm @ Meas. Temp	0.45 @ 50
Rmf @ Meas. Temp	0.34 @ 50
Rmc @ Meas. Temp	0.60 @ 50
Source of Rmf / Rmc	Charts
Rm @ BHT	0.18 @ 122
Operating Rig Time	3 Hours
Max Rec. Temp. F	122
Equipment Number	91
Location	Hays
Recorded By	D. Schmidt
Witnessed By	Jason Alm

<<< Fold Here >>>

All interpretations are opinions based on inferences from electrical or other measurements and we cannot and do not guarantee the accuracy or correctness of any interpretation, and we shall not, except in the case of gross or willful negligence on our part, be liable or responsible for any loss, costs, damages, or expenses incurred or sustained by anyone resulting from any interpretation made by any of our officers, agents or employees. These interpretations are also subject to our general terms and conditions set out in our current Price Schedule.

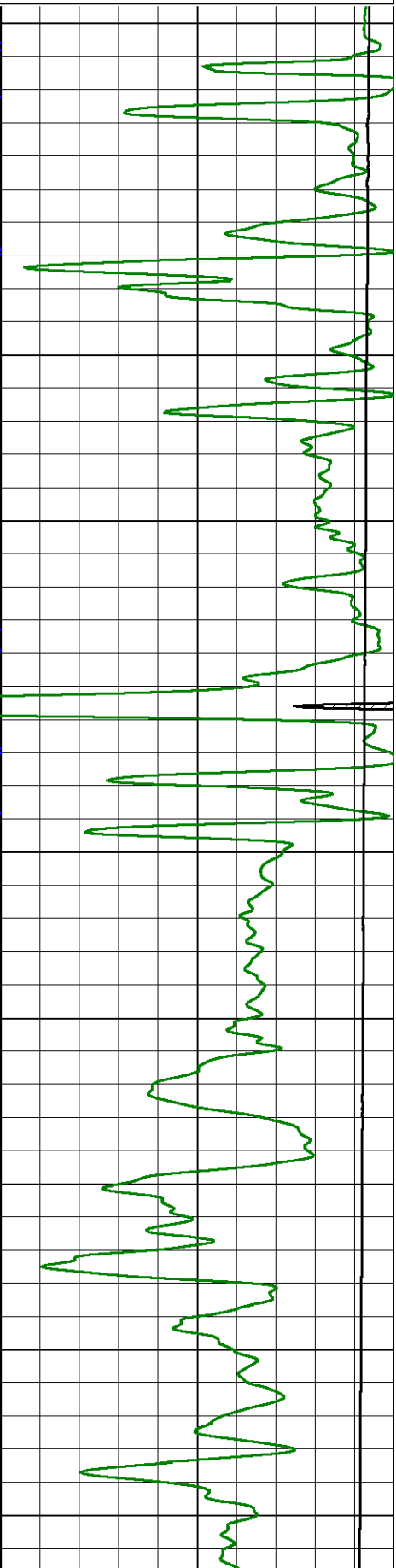
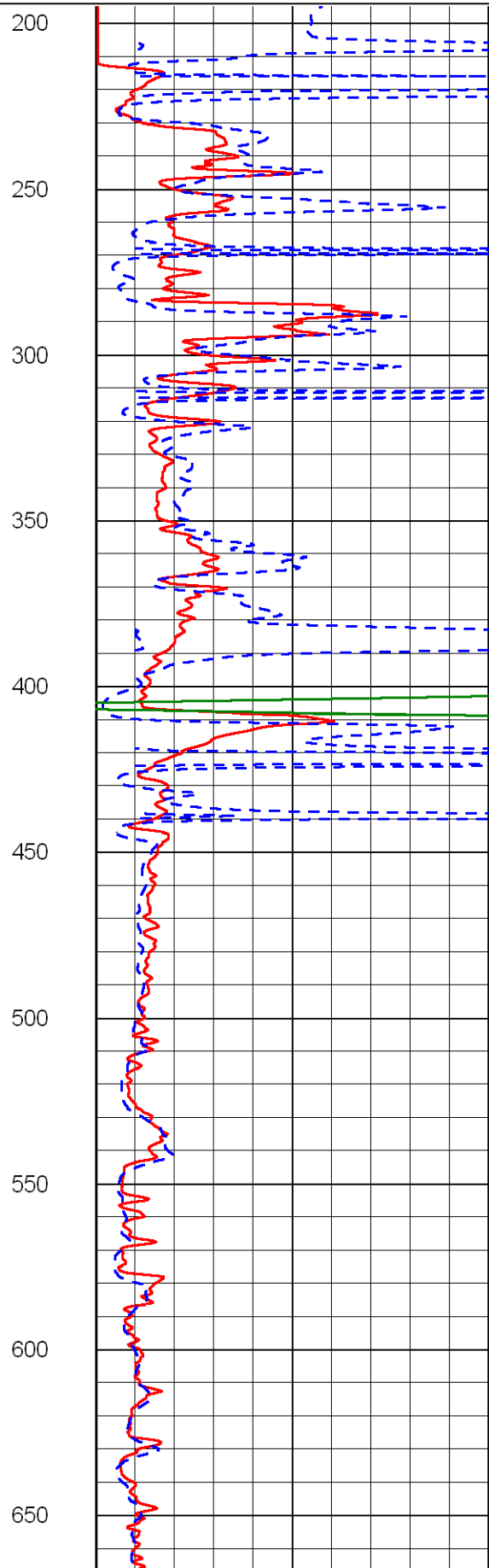
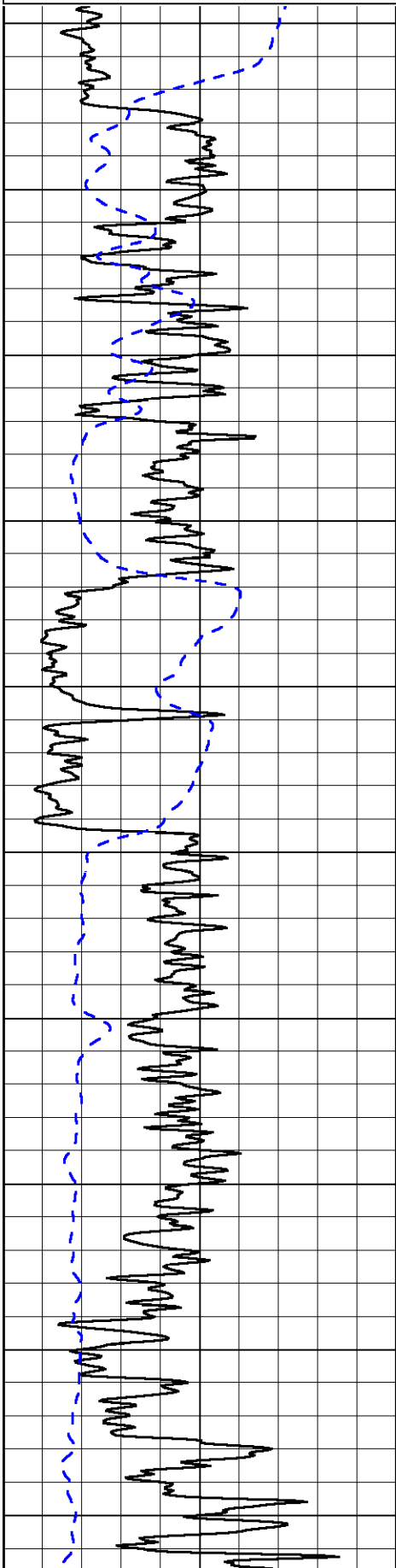
Comments

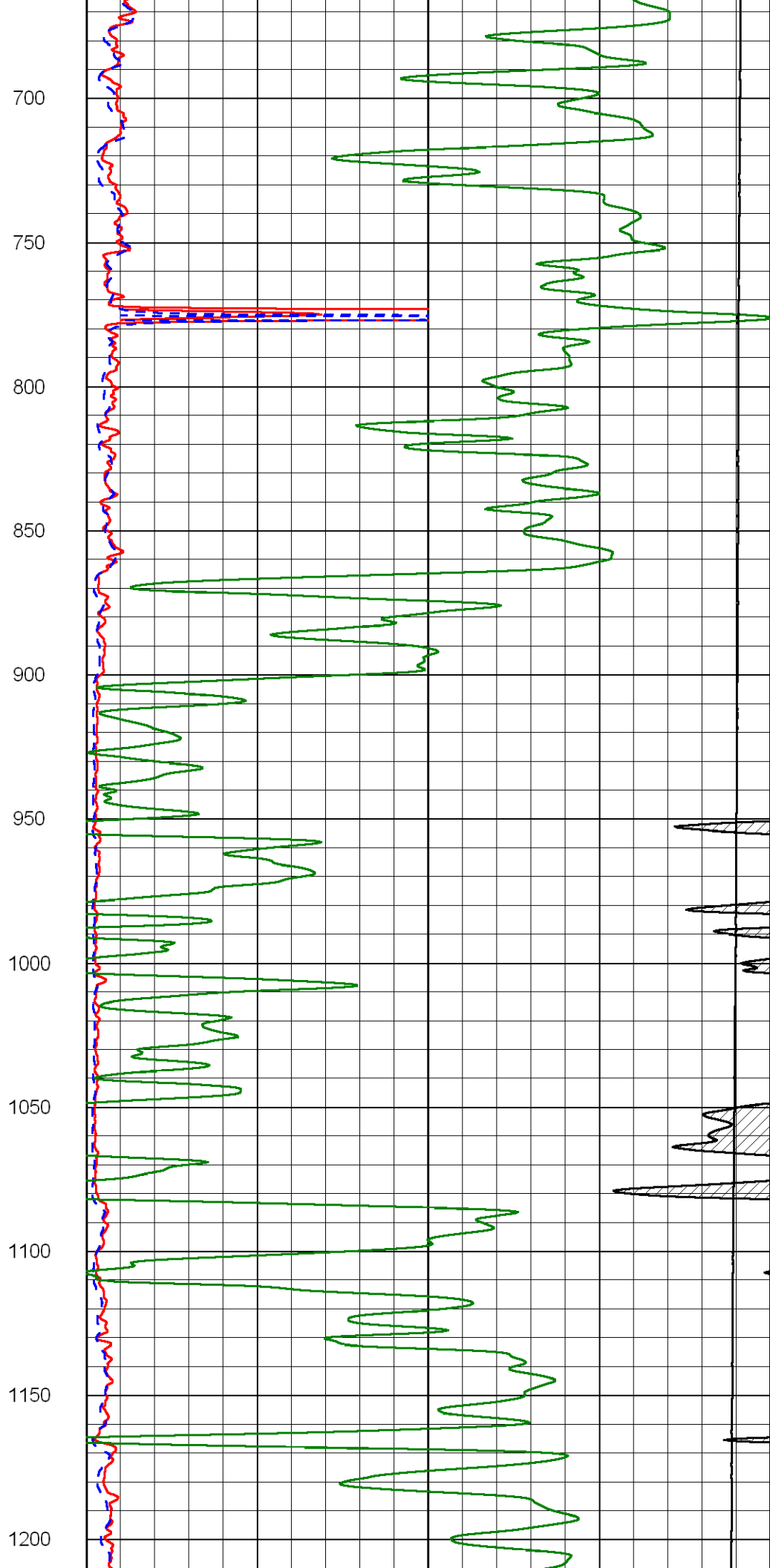
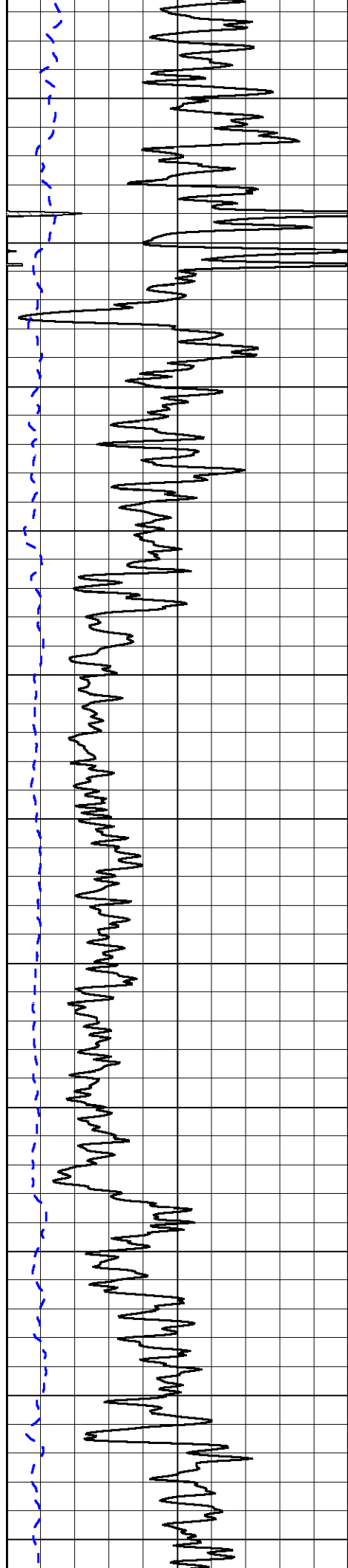
Thank you for using Log-Tech, Inc.
 (785) 625-3858
 Alexander,
 4 West to GG Rd, 3 South to 100 Rd, 1 West to FF Rd,
 1 South, East into

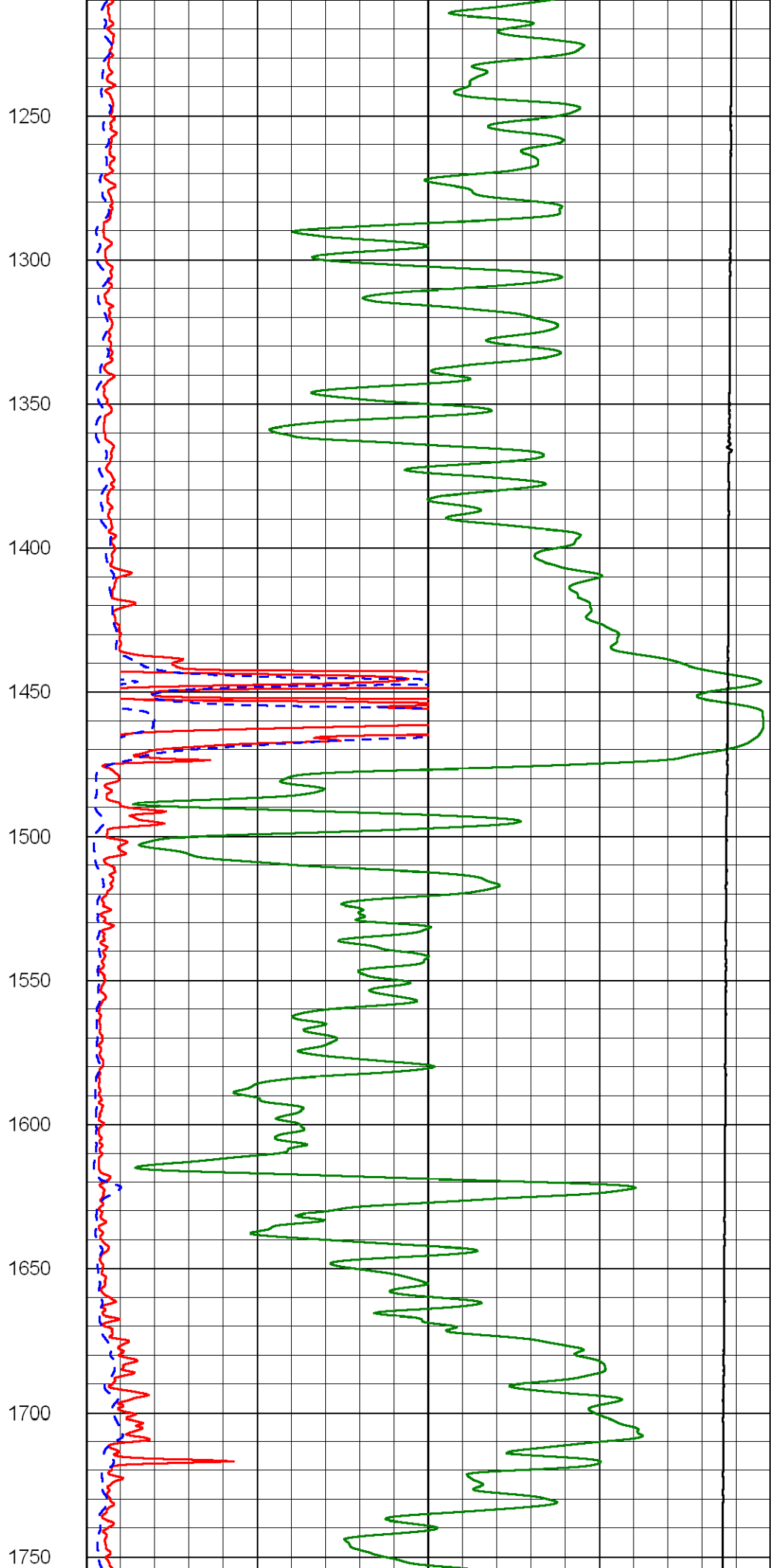
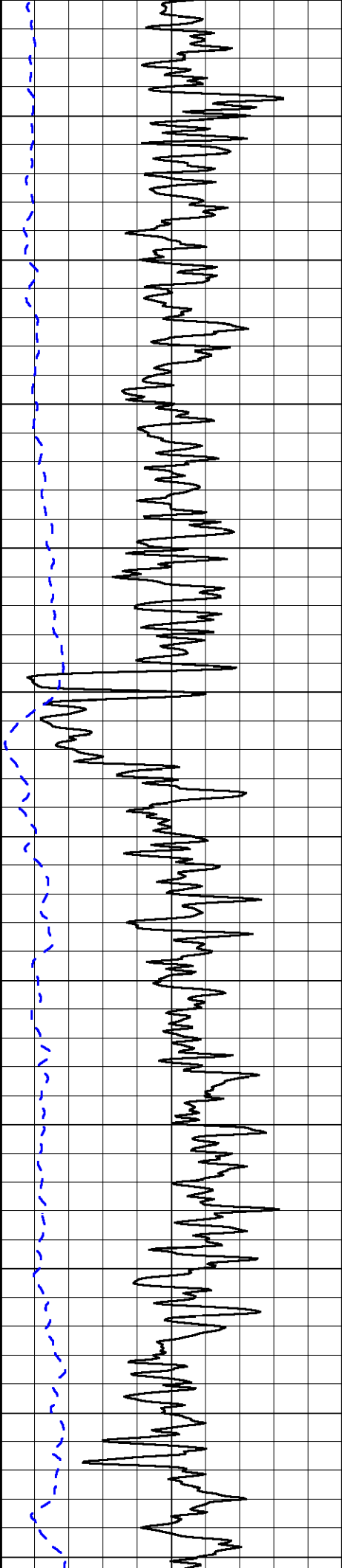
Database File: amwar_102812hd.db
 Dataset Pathname: dil/awstack
 Presentation Format: dil2in
 Dataset Creation: Sun Oct 28 15:44:11 2012
 Charted by: Depth in Feet scaled 1:600

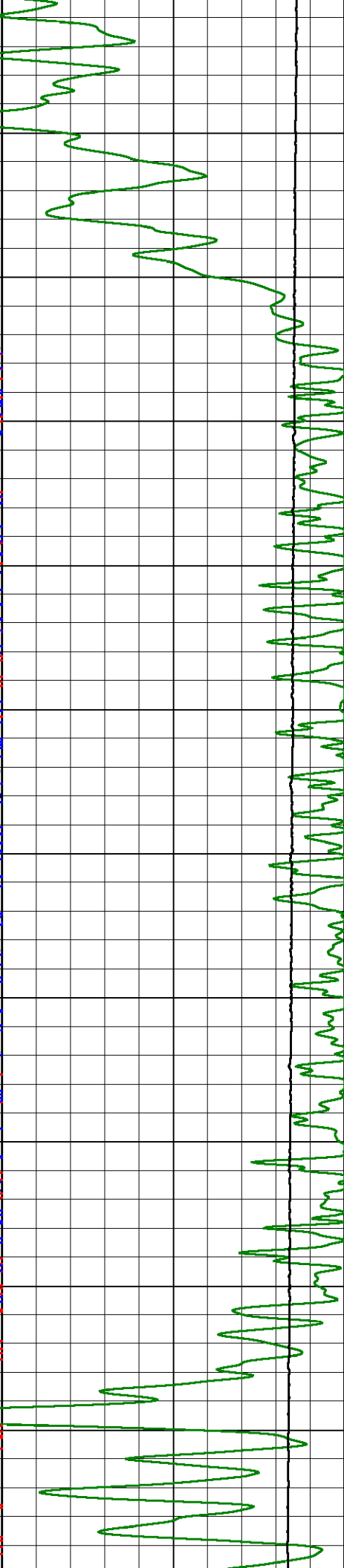
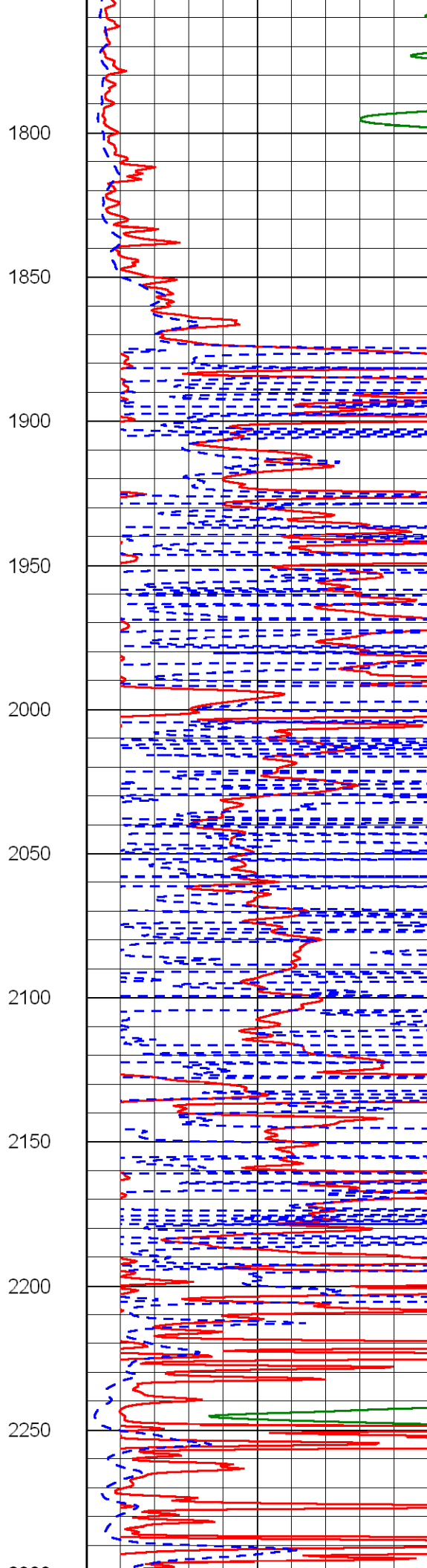
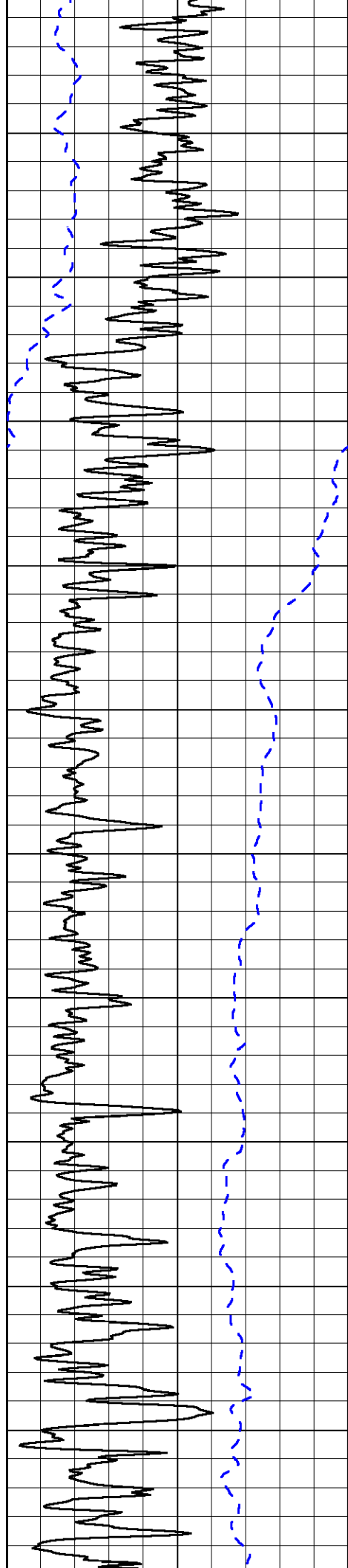
0 Gamma Ray 150
-200 SP 0

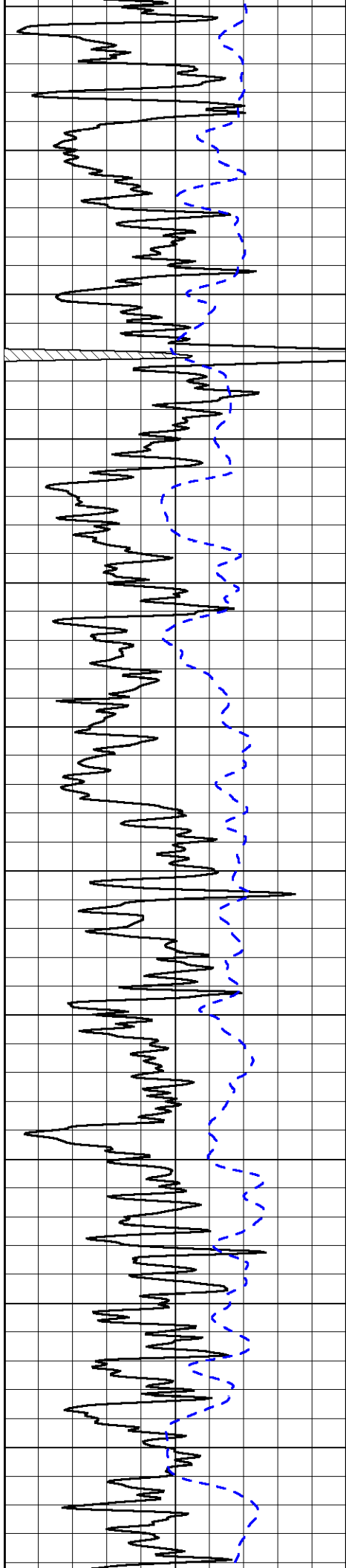
0 Shallow Resistivity 50
0 Deep Resistivity 50
1000 Conductivity 0
15000 Line Tension 0
50 Shallow Resistivity 50
50 Deep Resistivity 50



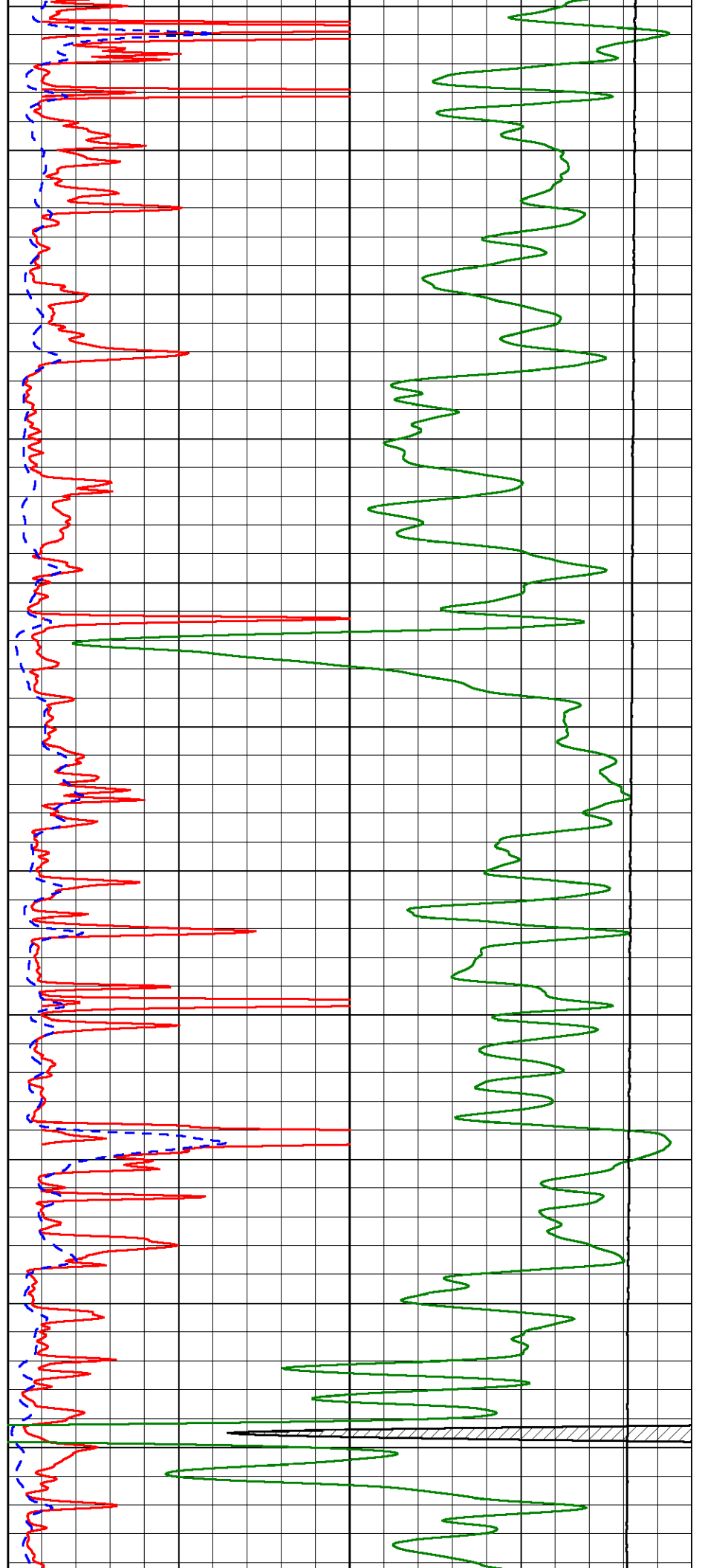


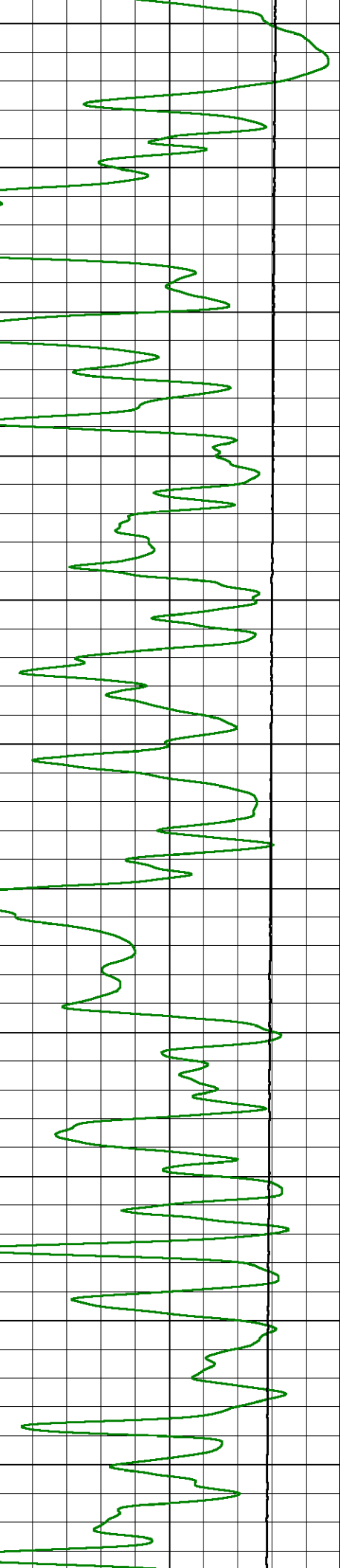
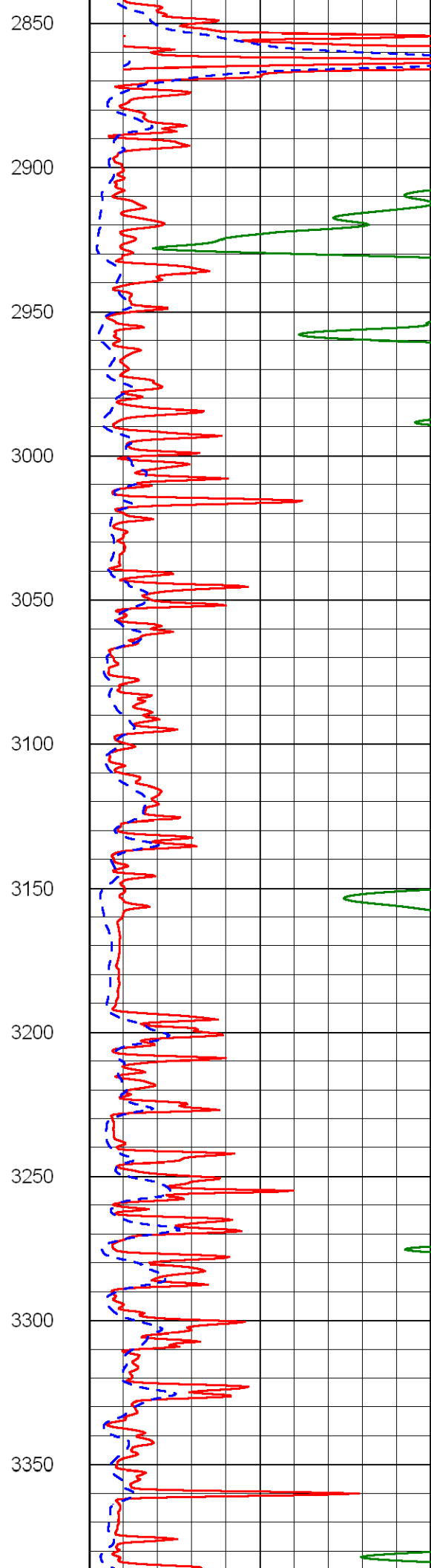
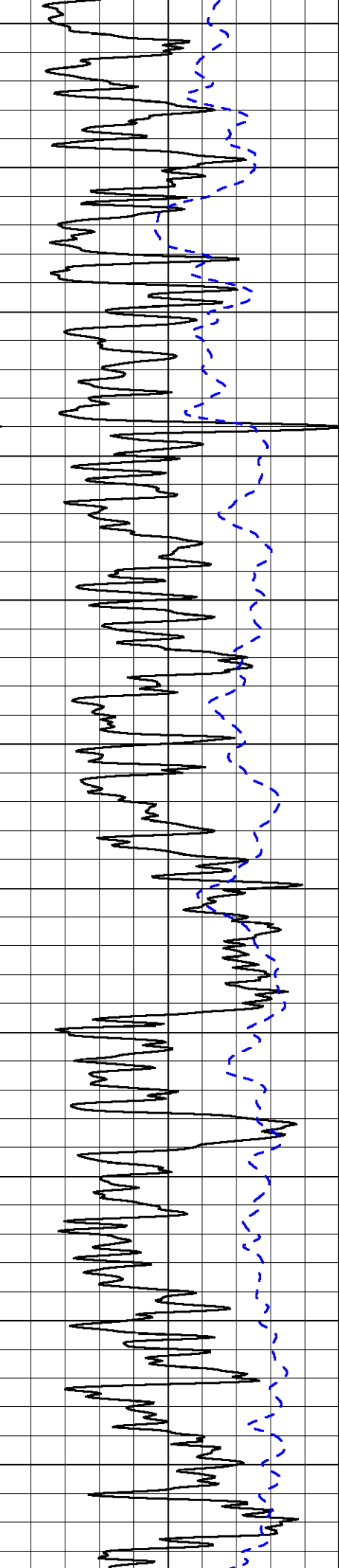


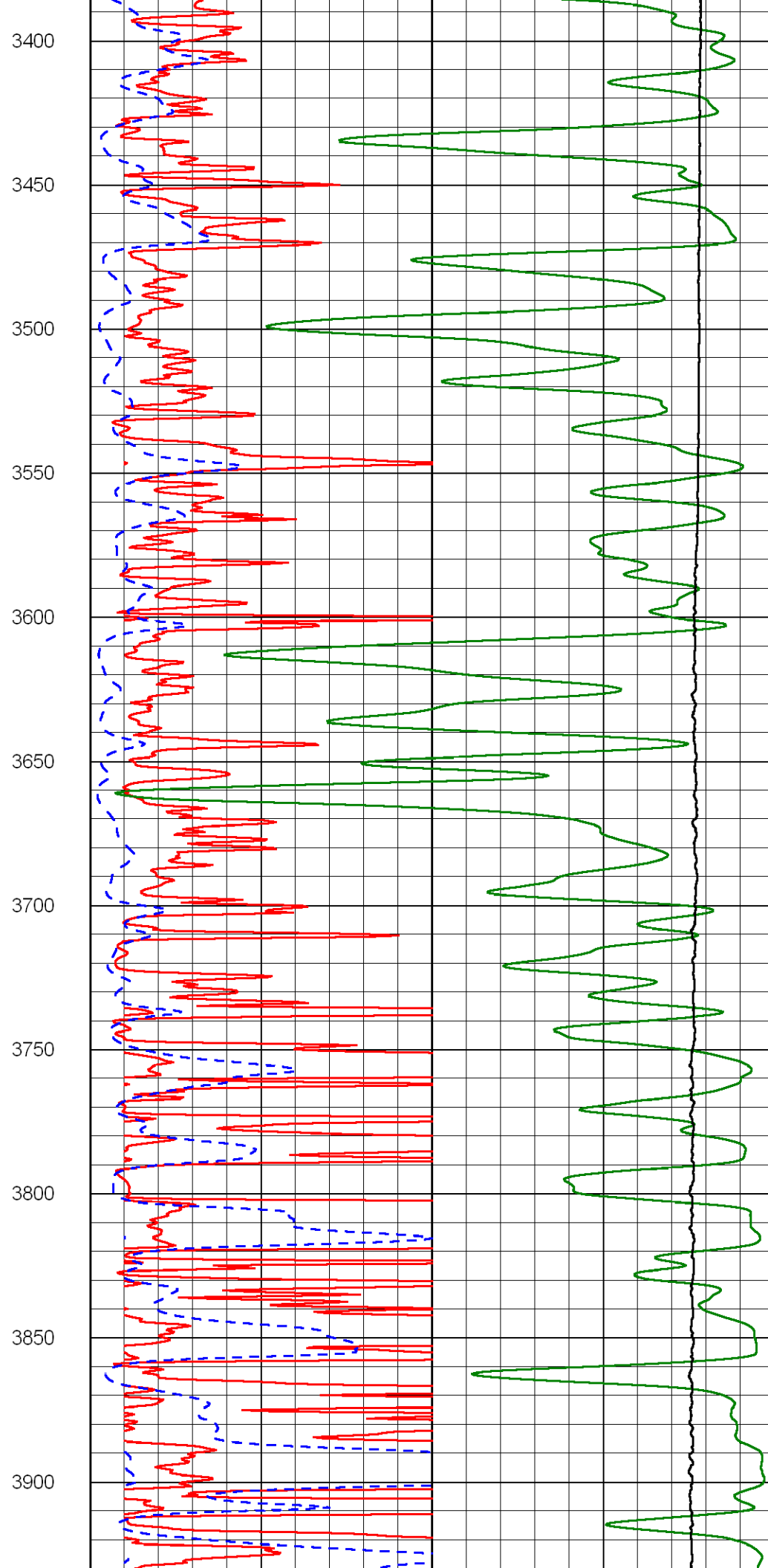
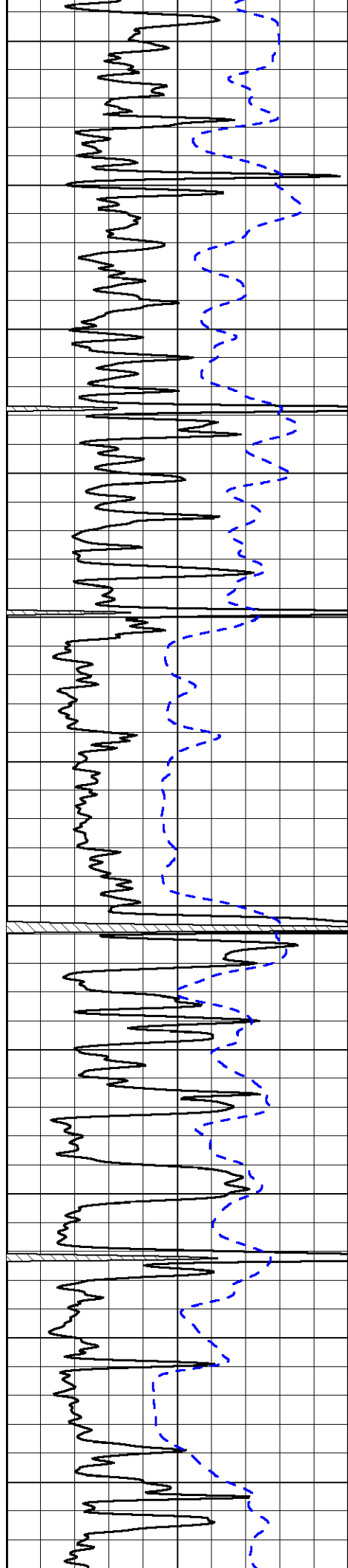


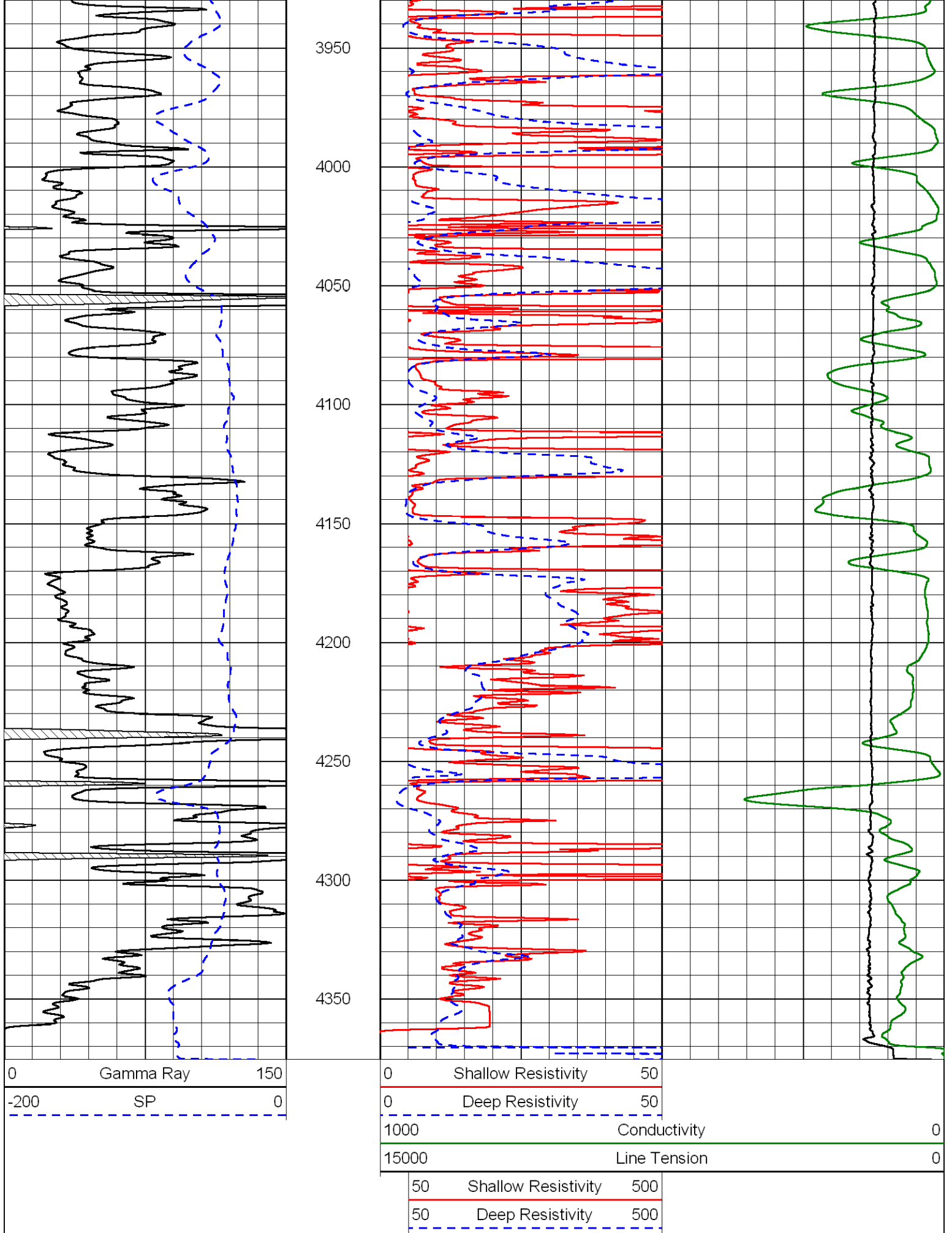


2300
2350
2400
2450
2500
2550
2600
2650
2700
2750
2800







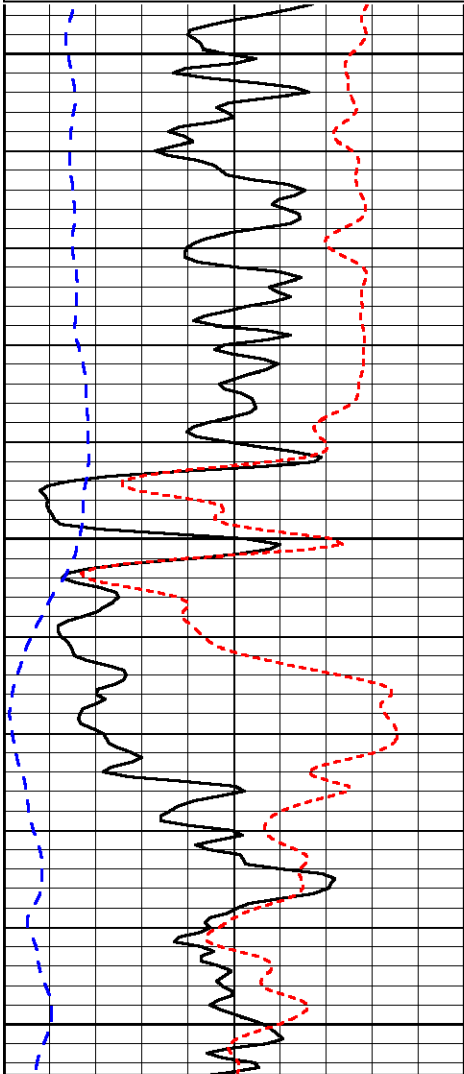


Dataset Pathname: dil/awstack
 Presentation Format: dil
 Dataset Creation: Sun Oct 28 15:44:11 2012
 Charted by: Depth in Feet scaled 1:240

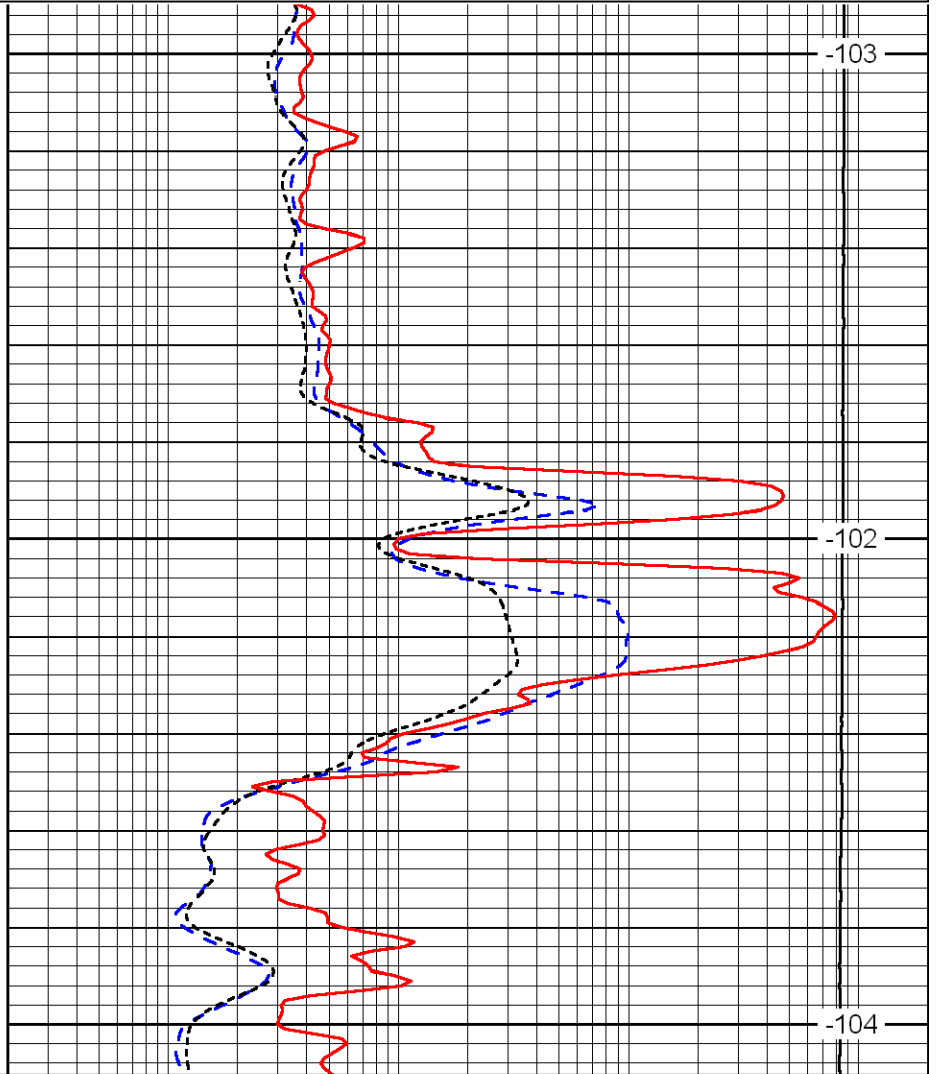
0	Gamma Ray	150
-160	RXO/RT	40
-200	SP	0

0.2	Deep Resistivity	2000
0.2	Medium Resistivity	2000
0.2	Shallow Resistivity	2000
10000	Line Tension	0

LSPD



1400
1450
1500



-103
-102
-104

0	Gamma Ray	150
-160	RXO/RT	40
-200	SP	0

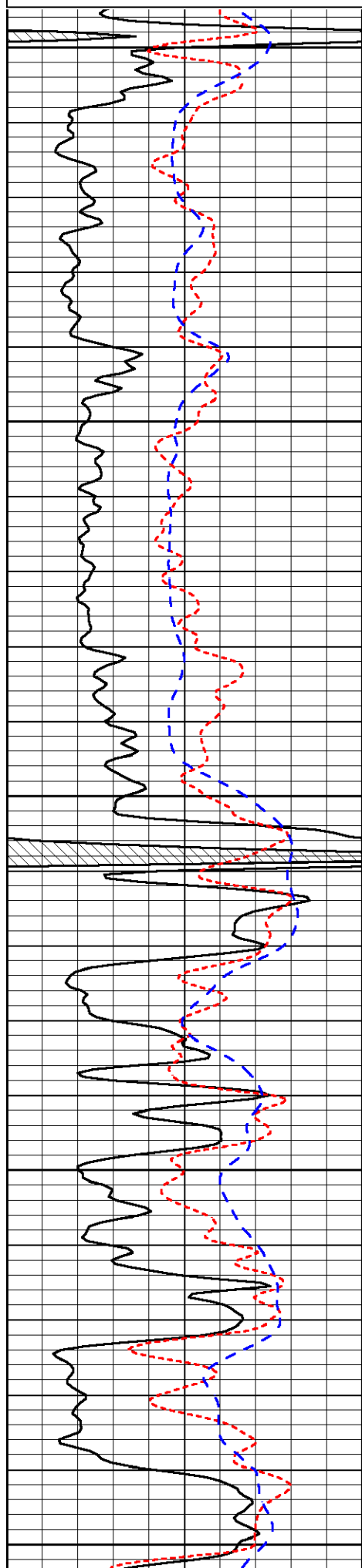
0.2	Deep Resistivity	2000
0.2	Medium Resistivity	2000
0.2	Shallow Resistivity	2000
10000	Line Tension	0

LSPD

Database File: amwar_102812hd.db
 Dataset Pathname: dil/awstack
 Presentation Format: dil
 Dataset Creation: Sun Oct 28 15:44:11 2012
 Charted by: Depth in Feet scaled 1:240

0	Gamma Ray	150
-160	RXO/RT	40
-200	SP	0

0.2	Deep Resistivity	2000
0.2	Medium Resistivity	2000
0.2	Shallow Resistivity	2000
10000	Line Tension	0



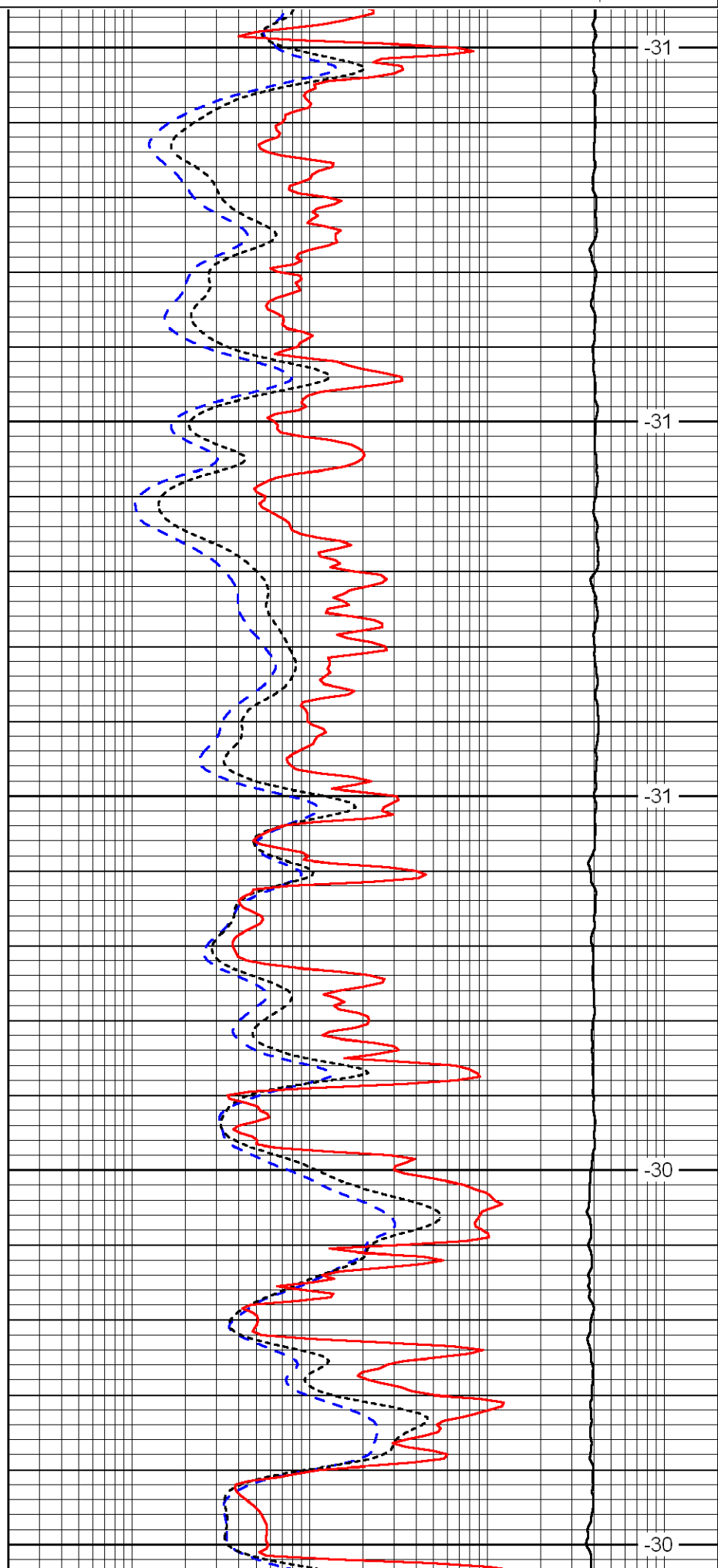
3600

3650

3700

3750

3800



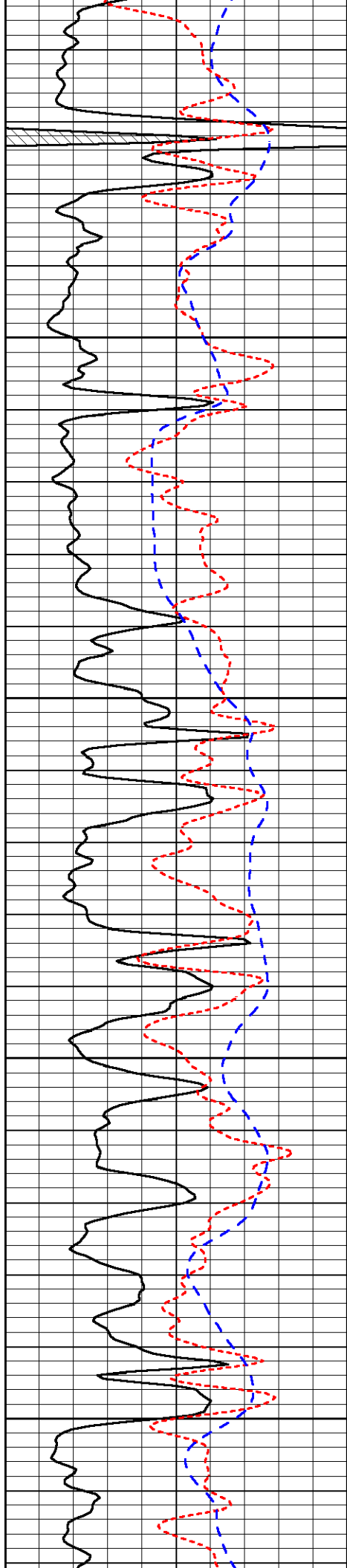
-31

-31

-31

-30

-30

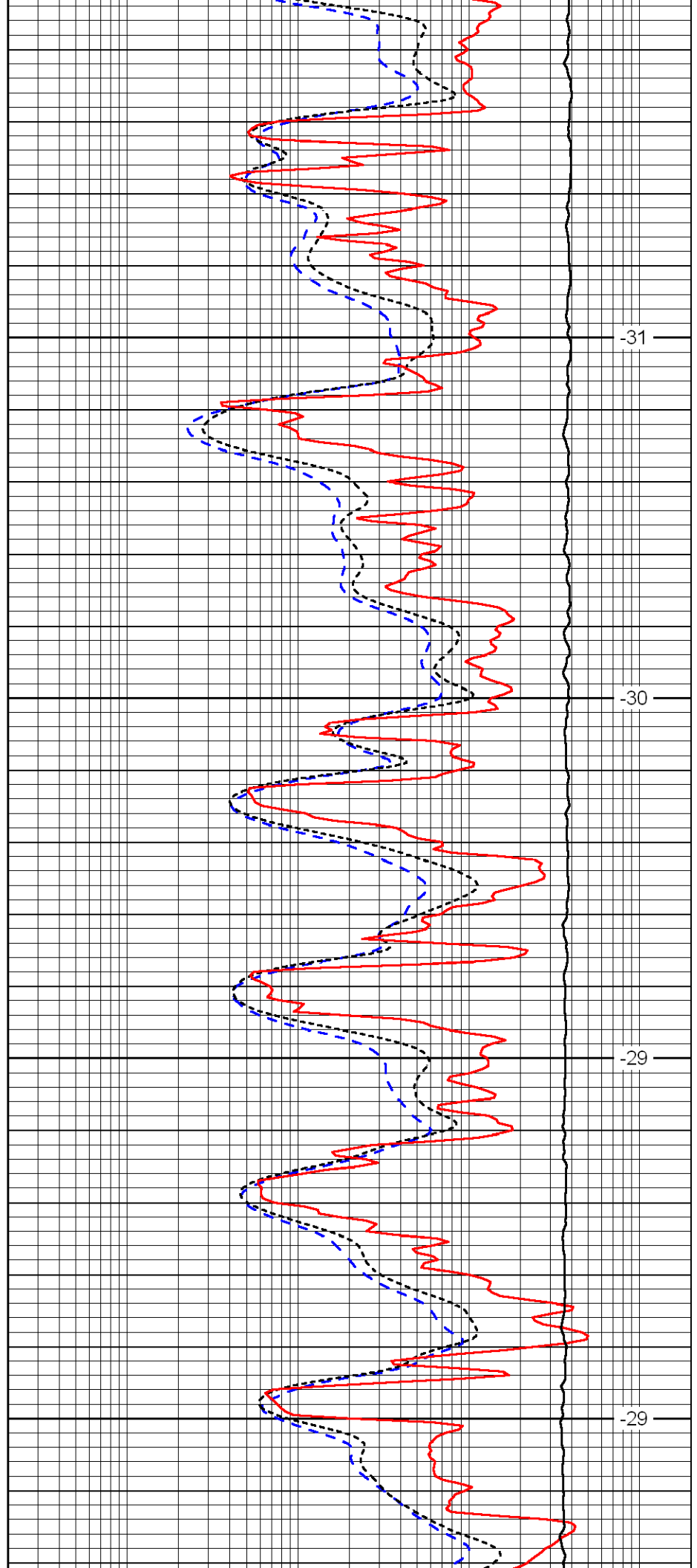


3850

3900

3950

4000

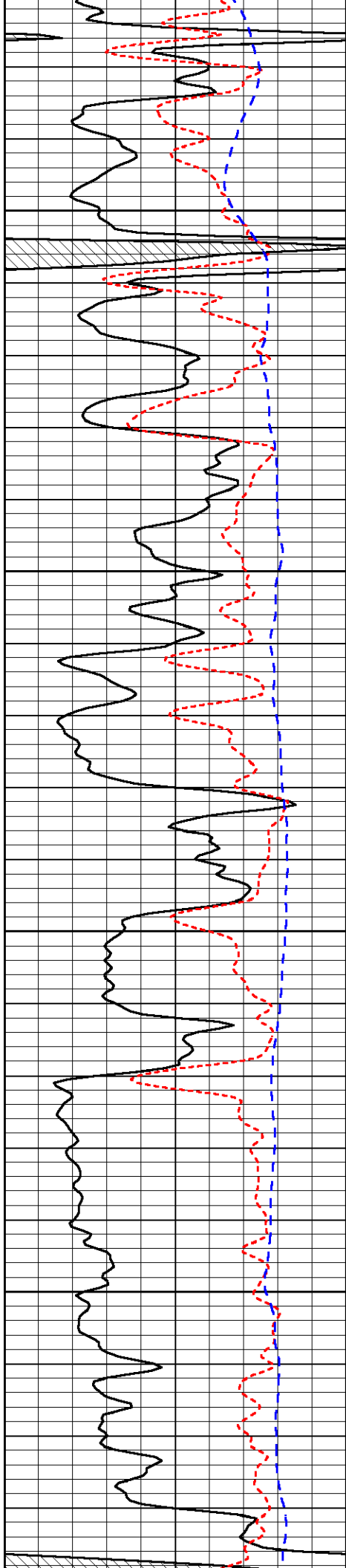


-31

-30

-29

-29

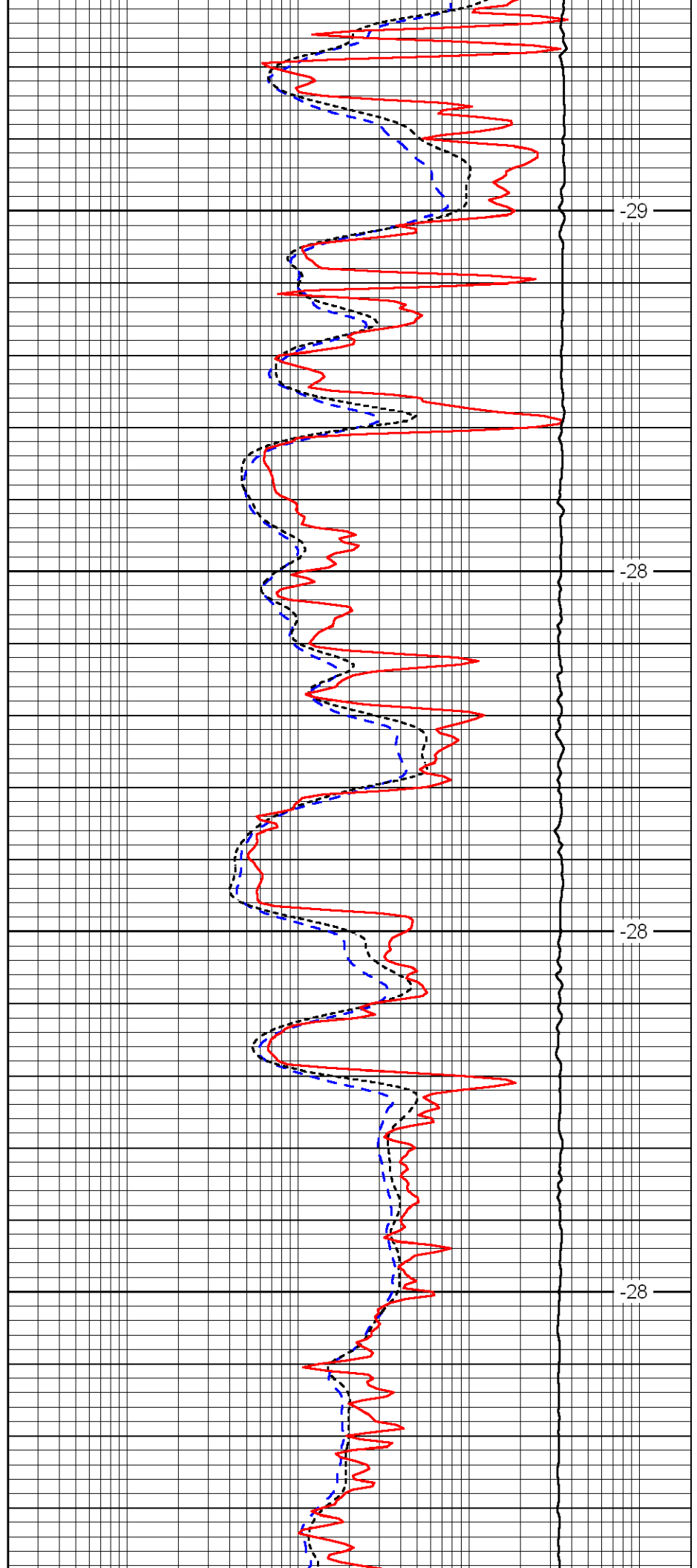


4050

4100

4150

4200

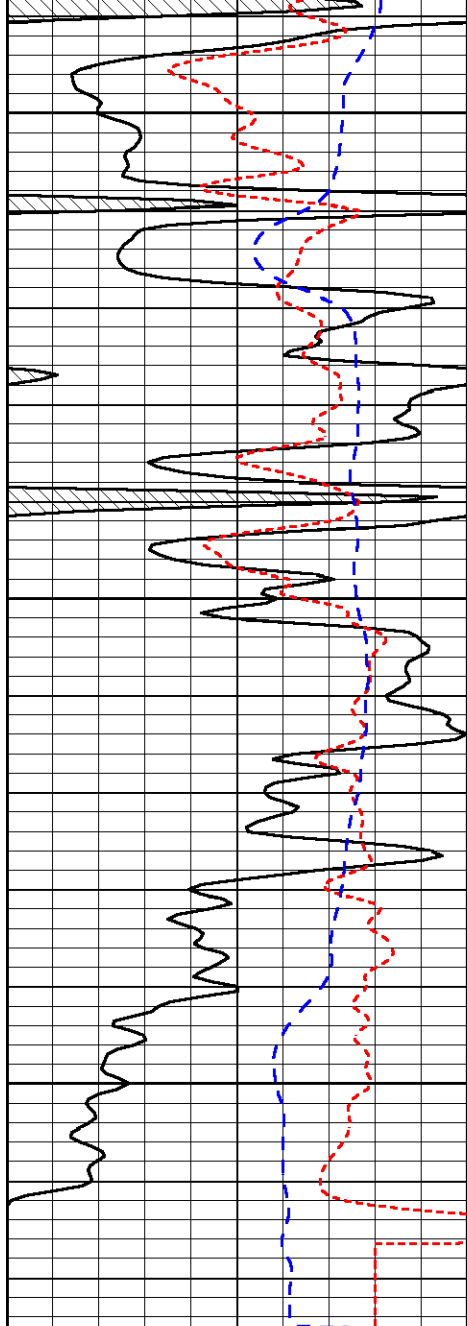


-29

-28

-28

-28

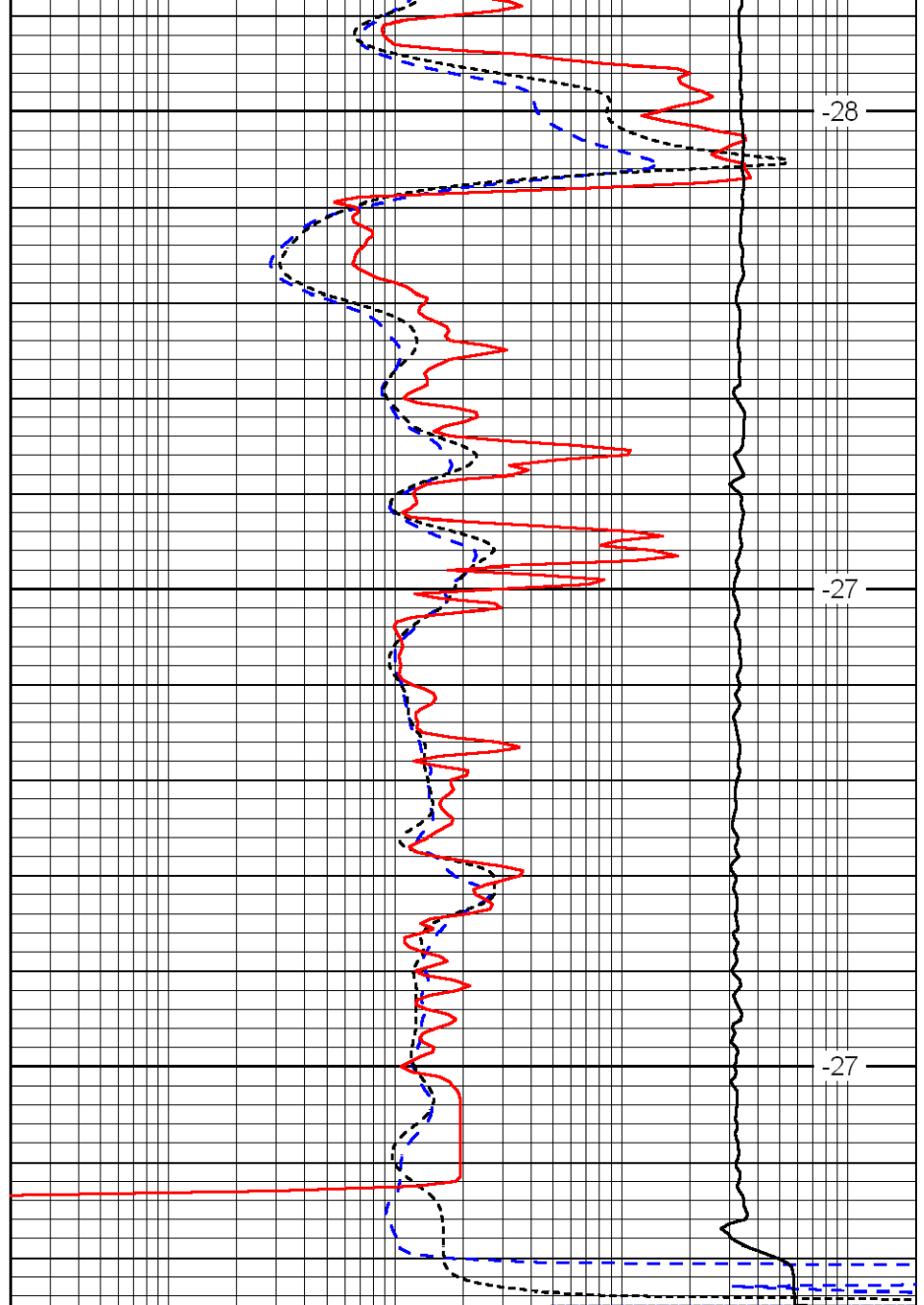


4250

4300

4350

0	Gamma Ray	150
-160	RXO/RT	40
-200	SP	0



-28

-27

-27

0.2	Deep Resistivity	2000
0.2	Medium Resistivity	2000
0.2	Shallow Resistivity	2000
10000	Line Tension	0

LSPD