



**SUPERIOR
Hays,
Kansas**

**MICRO
LOG**

Company R.L. INVESTMENT, LLC
Well SCHWARTZ #A-1
Field
County THOMAS State KANSAS

Company R.L. INVESTMENT, LLC
Well SCHWARTZ #A-1
Field
County THOMAS
State KANSAS

Location: API #: 15-193-20852-0000
1320' FSL & 990' FWL
E2 - W/2 - SW
SEC 1 TWP 9S RGE 31W
Permanent Datum GROUND LEVEL Elevation 2950
Log Measured From KELLY BUSHING 5' A.G.L.
Drilling Measured From KELLY BUSHING
Other Services
CDL/CNL
DIL/SON
Elevation
K.B. 2955
D.F. 2953
G.L. 2950

Date	6-10-12
Run Number	TW0
Depth Driller	4727
Depth Logger	4728
Bottom Logged Interval	4710
Top Log Interval	3350
Casing Driller	258
Casing Logger	256
Bit Size	7.875
Type Fluid in Hole	CHEMICAL MUD
Density / Viscosity	9.6 / 55
pH / Fluid Loss	11.0 / 7.2
Source of Sample	FLOWLINE
Rim @ Meas. Temp	1.10 @ 99F
Rmf @ Meas. Temp	0.83 @ 99F
Rmc @ Meas. Temp	1.32 @ 99F
Source of Rmf / Rmc	MEASURED
Rim @ BHT	0.89 @ 123F
Time Circulation Stopped	2 HOURS
Time Logger on Bottom	
Maximum Recorded Temperature	127F
Equipment Number	860
Location	HAYS, KS.
Recorded By	JEFF GRONEWEG
Witnessed By	LARRY FRIEND

<<< Fold Here >>>

All interpretations are opinions based on inferences from electrical or other measurements and we cannot and do not guarantee the accuracy or correctness of any interpretation, and we shall not, except in the case of gross or willful negligence on our part, be liable or responsible for any loss, costs, damages, or expenses incurred or sustained by anyone resulting from any interpretation made by any of our officers, agents or employees. These interpretations are also subject to our general terms and conditions set out in our current Price Schedule.

Comments

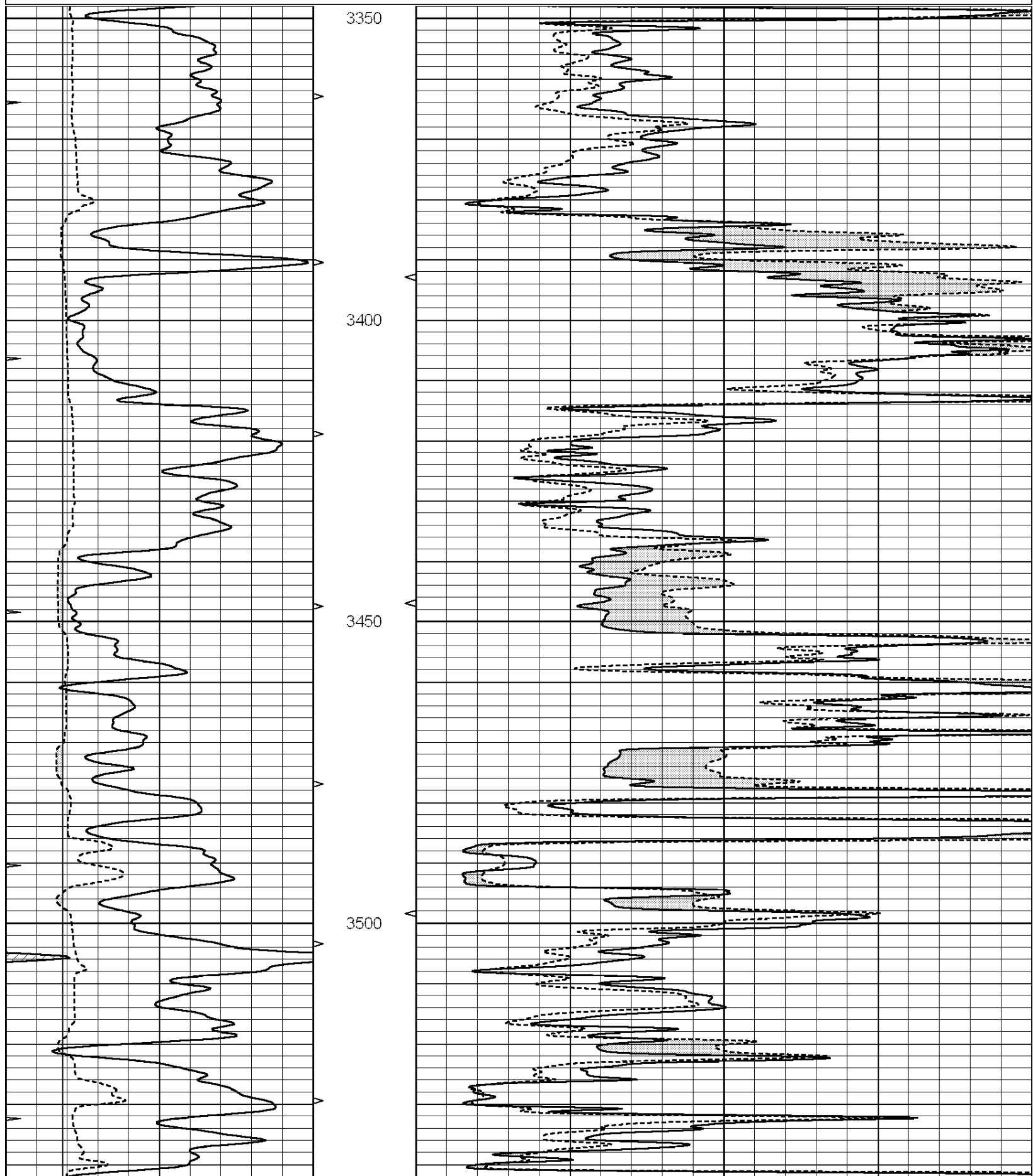
SUPERIOR WELL SERVICES
 785-628-6395
THANK YOU FOR YOUR BUSINESS
 DIRECTIONS: I-70 & CAMPUS EXIT - 8 MILES NORTH TO Y IN ROAD
 1 MILE WEST - 4 MILES NORTH TO RD L - 1 MILE EAST - 1/2 MILE NORTH
 EAST INTO

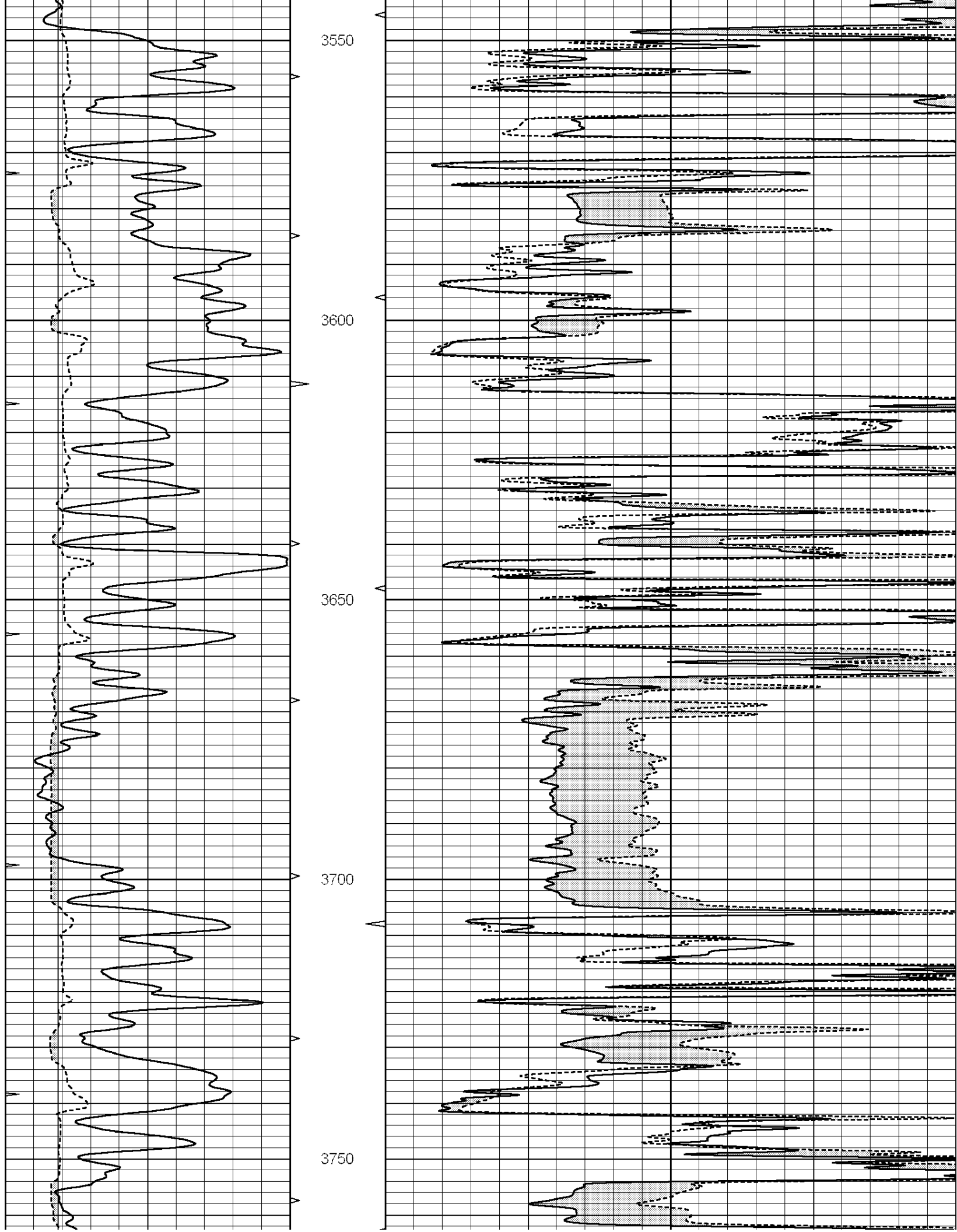
Charted by:

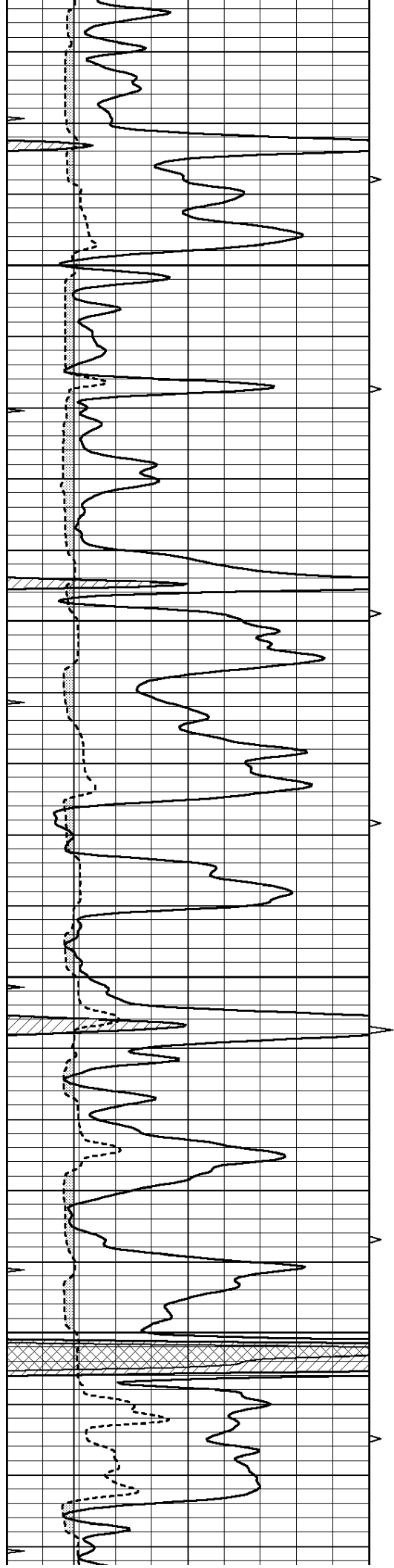
Depth in Feet scaled 1:240

0	GAMMA RAY (GAPI)	150
6	MELCAL (in)	16
0	MINMK	20

0	MEL1.5 (Ohm-m)	40
0	MEL2.0 (Ohm-m)	40





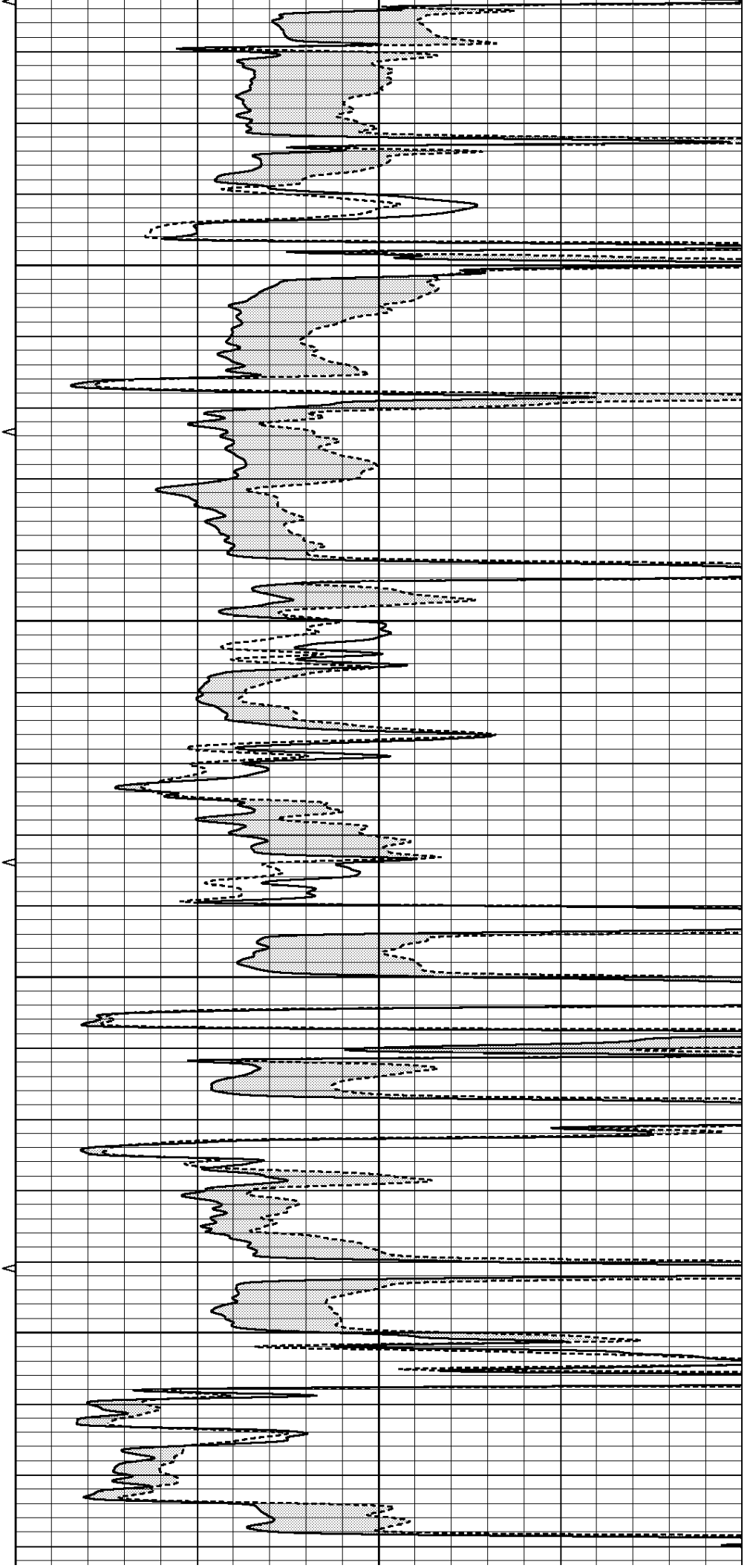


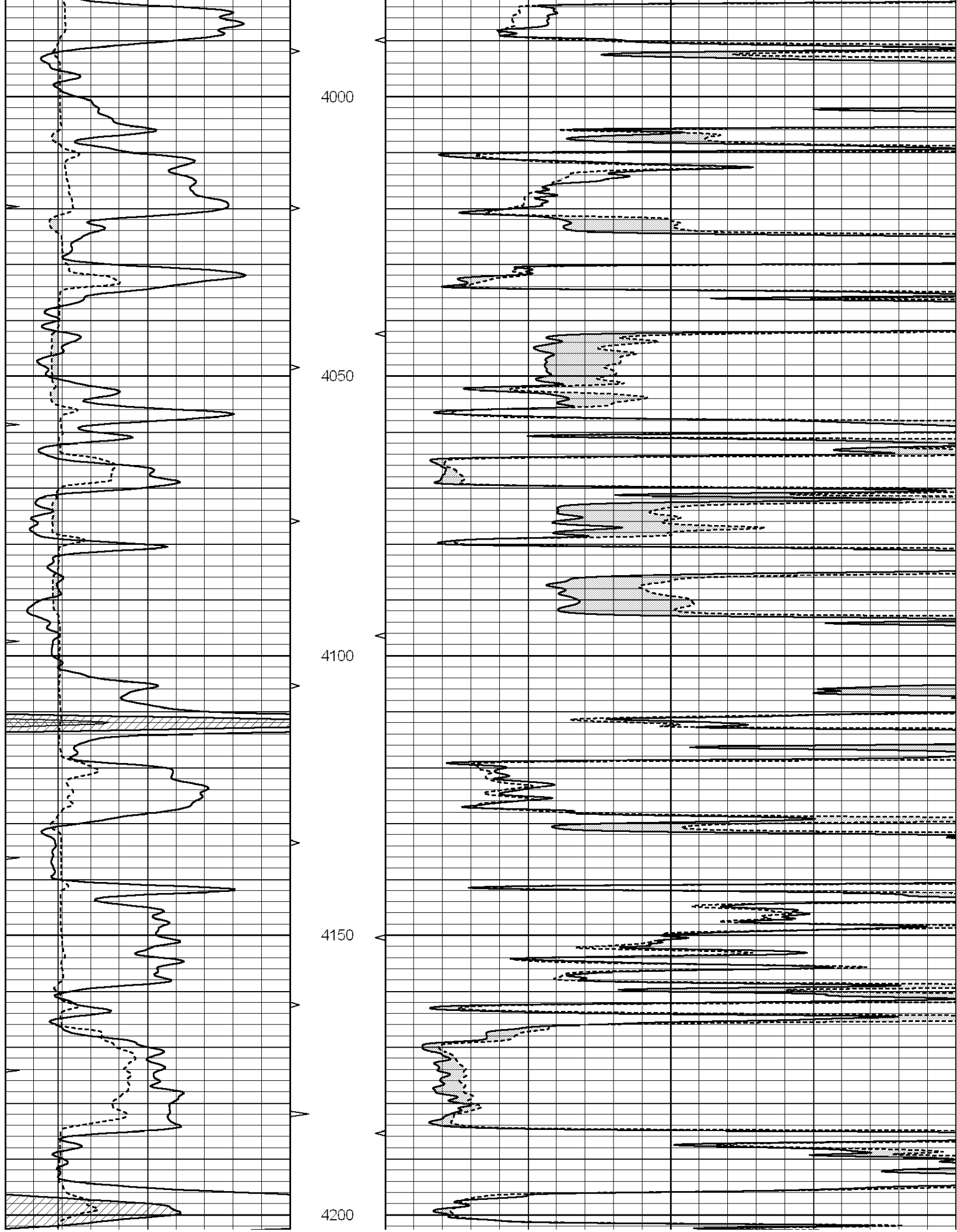
3800

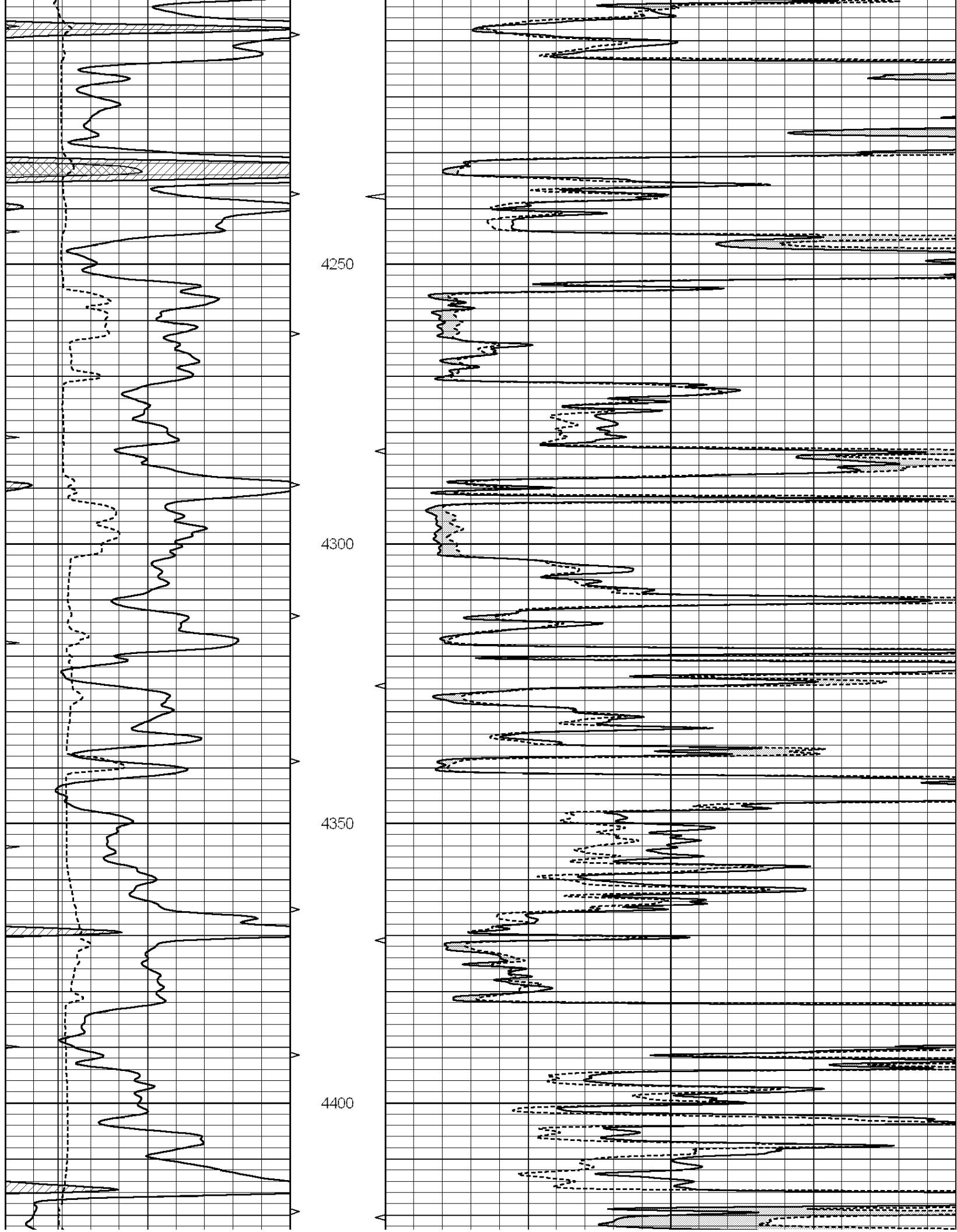
3850

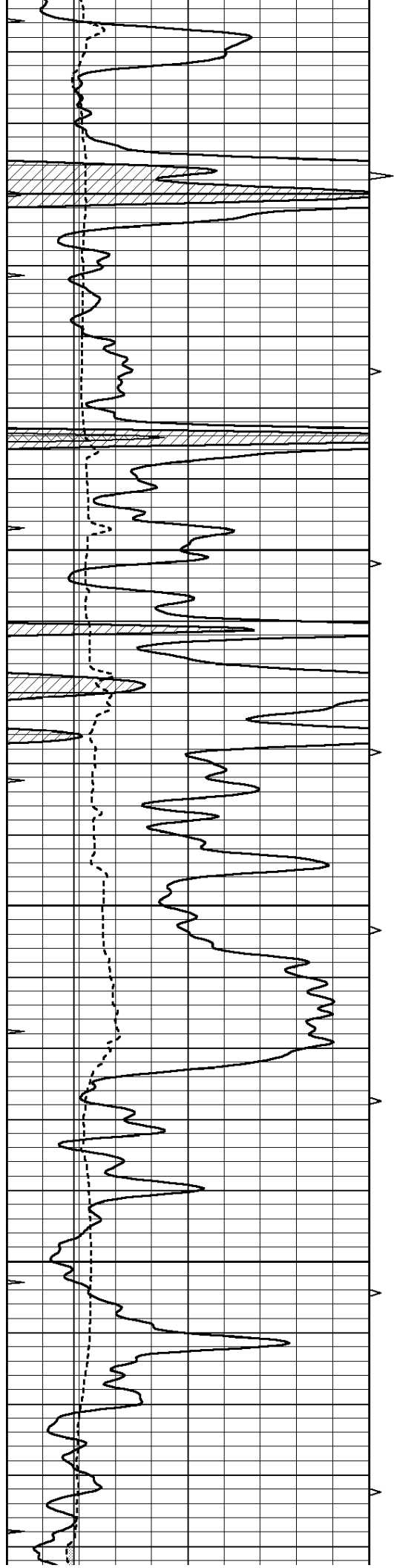
3900

3950







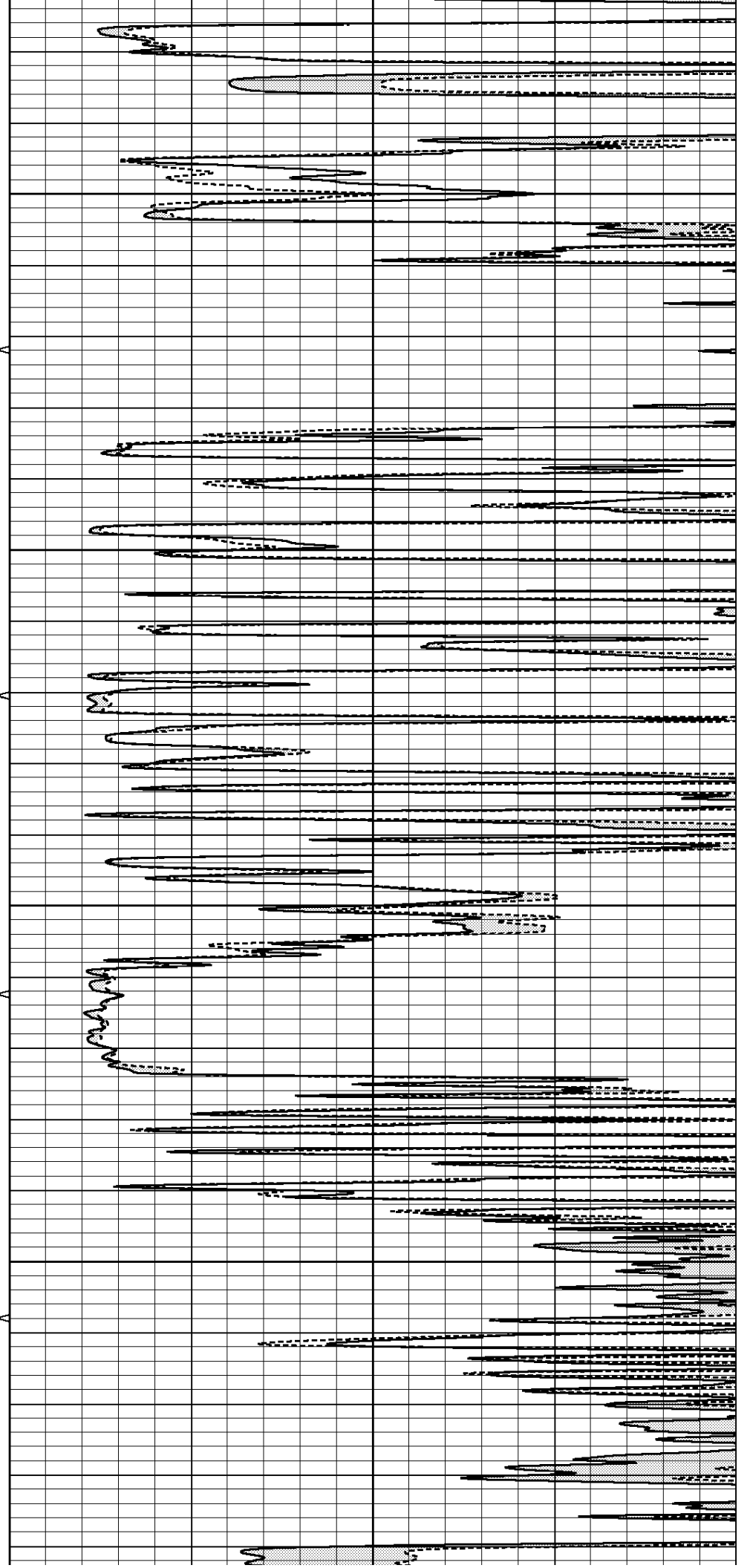


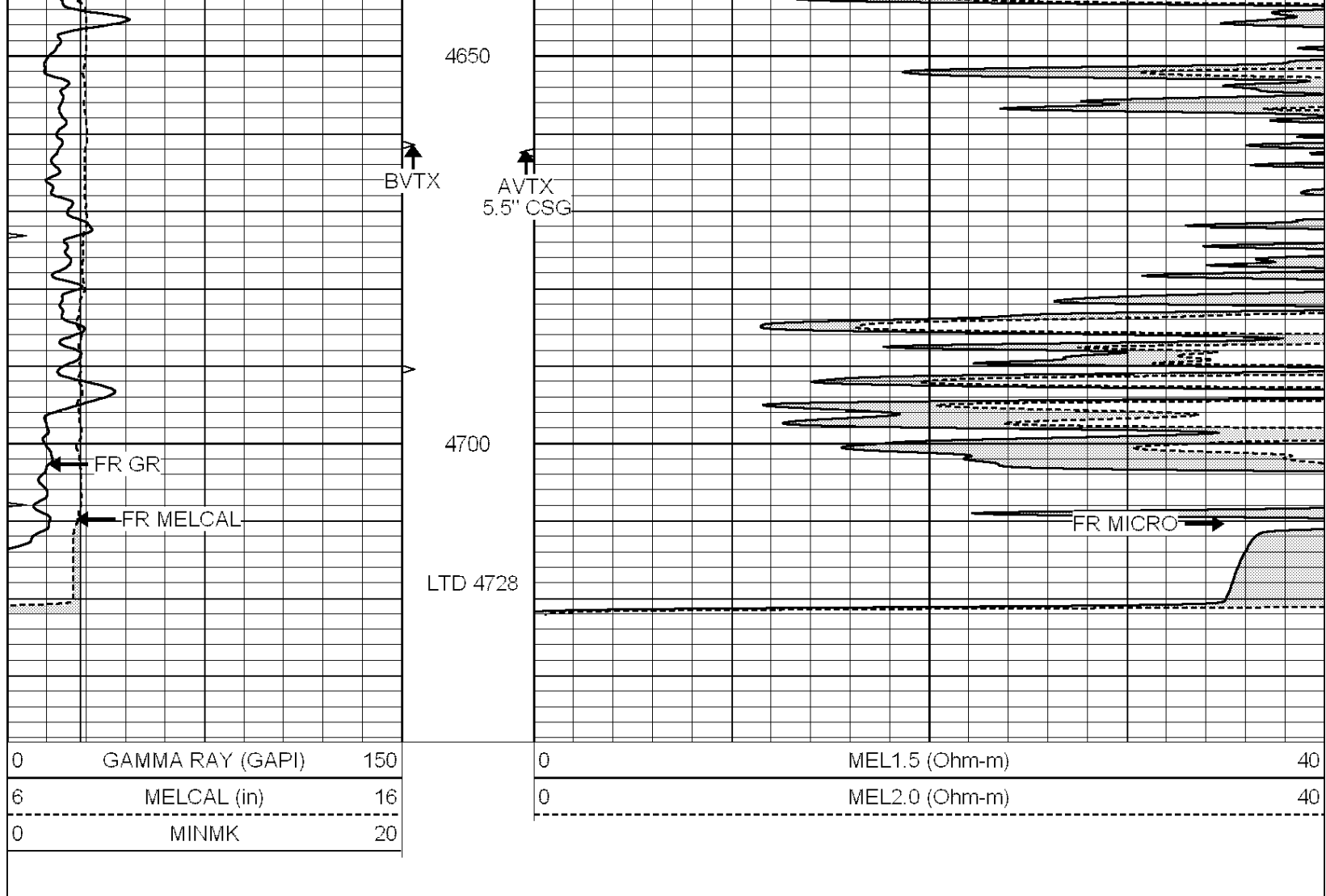
4450

4500

4550

4600



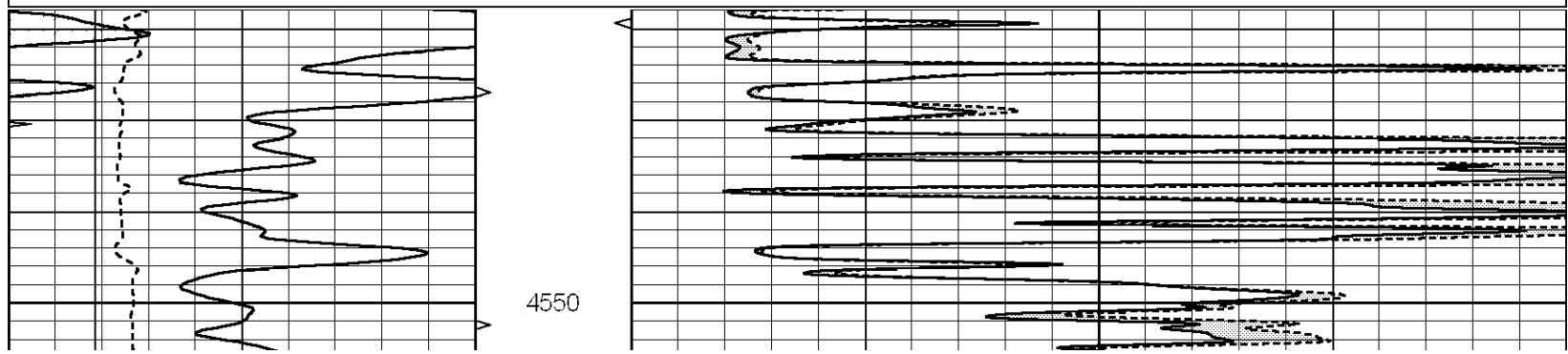


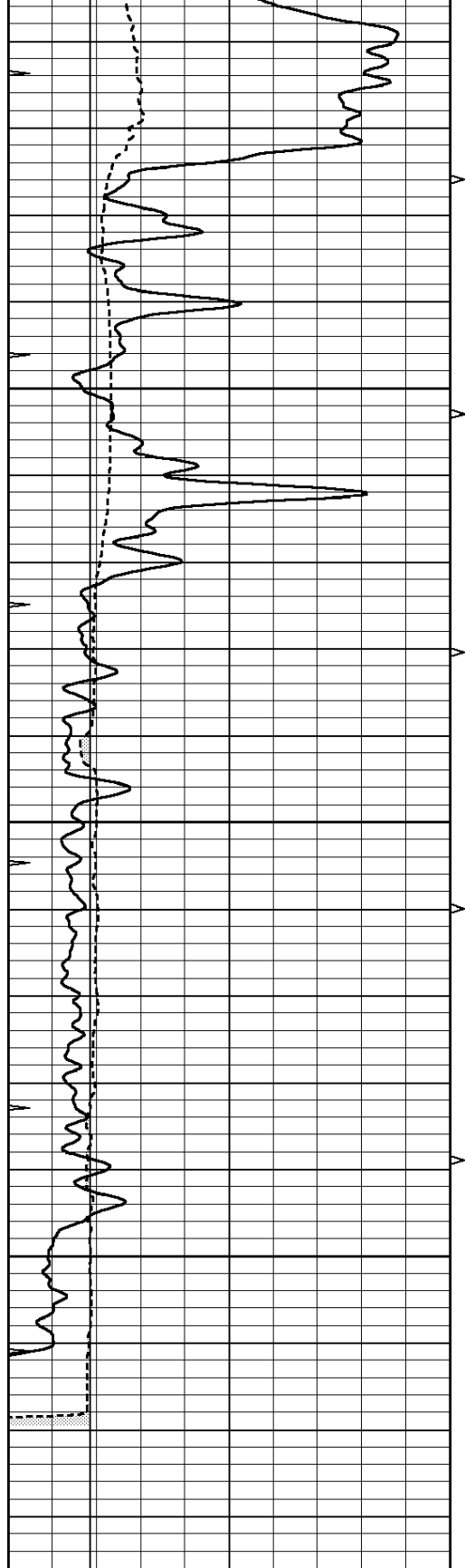
SUPERIOR
Hays,
Kansas

REPEAT SECTION

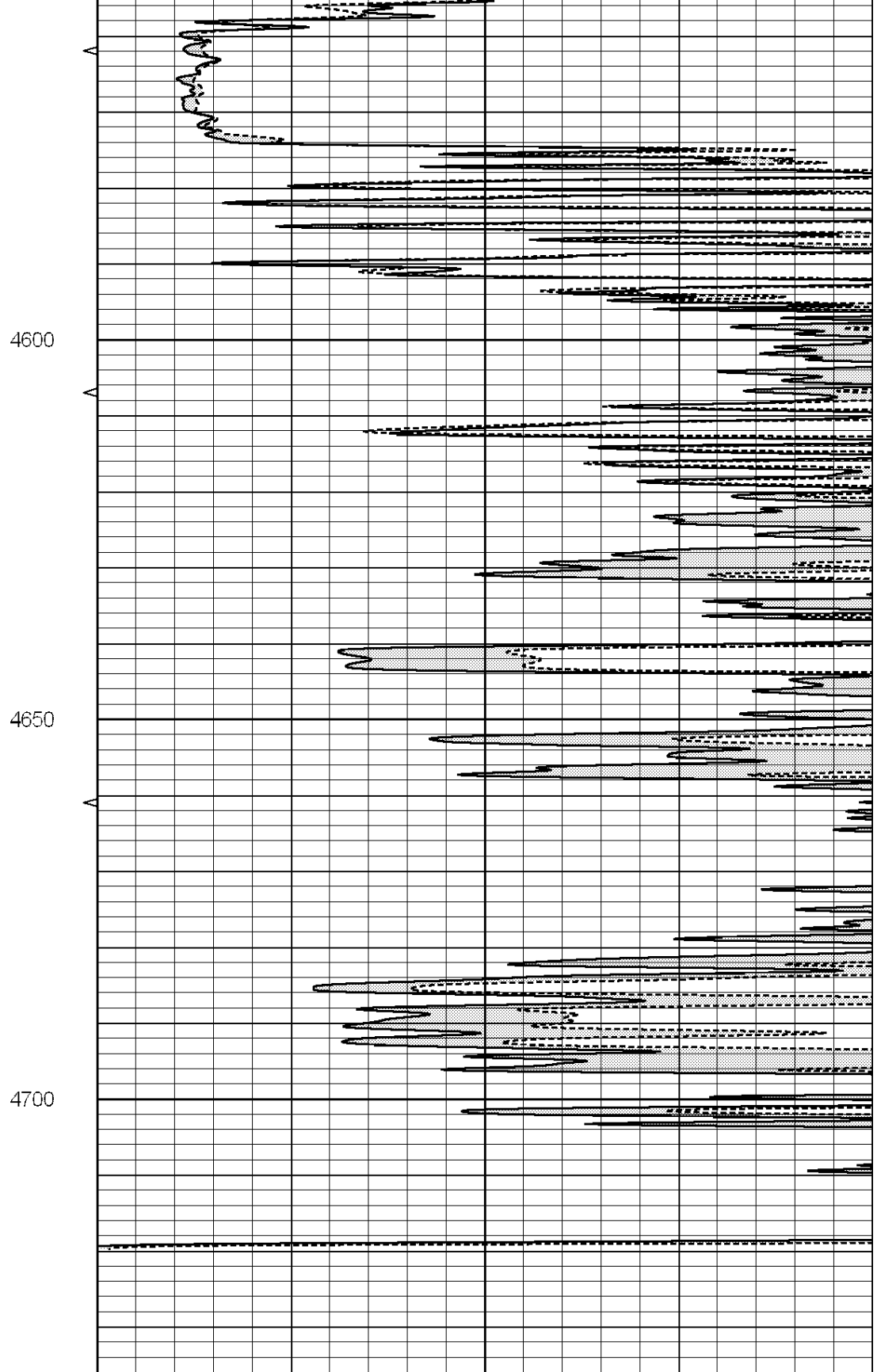
Database File: 008787ddn.db
 Dataset Pathname: pass5.1
 Presentation Format: micro
 Dataset Creation: Sun Jun 10 19:52:37 2012 by Calc Open-Cased 090629
 Charted by: Depth in Feet scaled 1:240

0	GAMMA RAY (GAPI)	150	0	MEL1.5 (Ohm-m)	40
6	MELCAL (in)	16	0	MEL2.0 (Ohm-m)	40
0	MINMK	20			





0	GAMMA RAY (GAPI)	150
6	MELCAL (in)	16
0	MINMK	20



0	MEL1.5 (Ohm-m)	40
0	MEL2.0 (Ohm-m)	40

Calibration Report

Database File: 008787ddn.db
 Dataset Pathname: pass6.1
 Dataset Creation: Sun Jun 10 19:49:36 2012 by Calc Open-Cased 090629

MICRO Calibration Report

Serial Number: MICRO4
 Tool Model: PROBE
 Performed: Sun Jun 03 05:02:09 2012

Caliper Calibration:	Gain=1.157	Offset=1.294
	Low Cal	High Cal
References	7.800	11.000
Readings	5.449	8.214

1.5" Calibration:	Gain=42.000	Offset=-0.400
	Low Cal	High Cal
References	0.000	20.000
Readings	0.009	1.541

2" Calibration:	Gain=46.000	Offset=0.600
	Low Cal	High Cal
References	0.000	20.000
Readings	0.004	1.198

Gamma Ray Calibration Report

Serial Number: GR5
 Tool Model: OPEN
 Performed: Mon Jun 04 20:32:21 2012

Calibrator Value:	1.0	GAPI
Background Reading:	0.0	cps
Calibrator Reading:	1.0	cps
Sensitivity:	0.7500	GAPI/cps